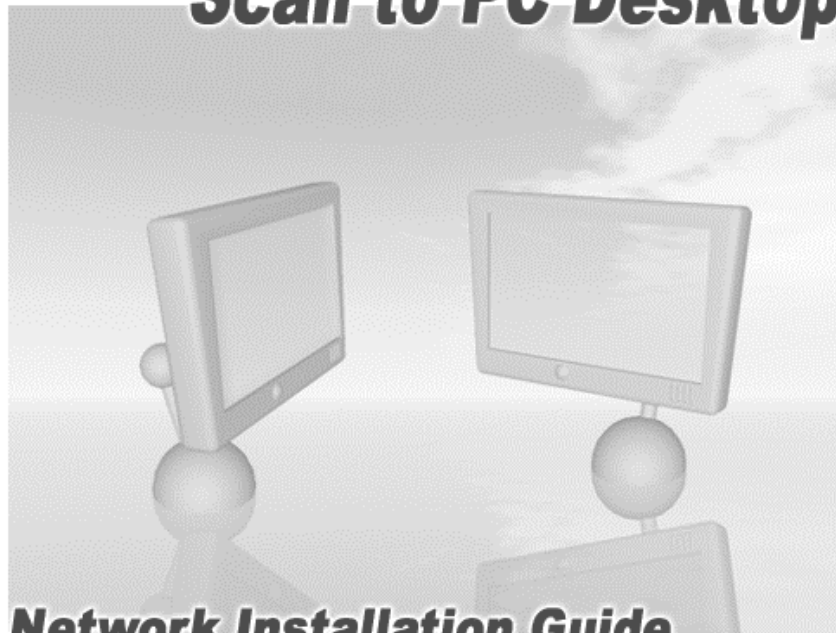


# ***Scan to PC Desktop***



## ***Network Installation Guide***

Version 7.1

*Scan to PC Desktop v7.1  
Network Installation Guide  
Document version 2.0*

*This document provides instructions for installing the software associated with Scan to PC Desktop in a network environment.*

*Xerox Corporation  
800 Phillips Rd.  
Webster, NY 14580-9791*

*ScanSoft, Inc.  
One Wayside Road  
Burlington, MA 01803*

*© 2005 Xerox Corporation and ScanSoft Inc. All rights reserved.*

*XEROX®, The Document Company®, the stylized X®, and the identifying product names and numbers herein are trademarks of XEROX CORPORATION.*

*ScanSoft and the Scansoft logo are trademarks or registered trademarks of ScanSoft, Inc. in the United States and other countries.*

*Other product names and images used in this guide may be trademarks or registered trademarks of their respective companies and are hereby acknowledged.*

# Scan to PC Desktop v7.1 Network Installation Guide

<b>Table of contents</b>
--------------------------

- Scan to PC Desktop v7.1 Network Installation Guide.....3**
- Table of contents .....3**
- Introduction .....4**
- Scan to PC Desktop software components.....5**
- Windows 2000/2003 Server with Active Directory Support.....6**
- Systems Management Server Support .....7**
- Creating administrative images.....8**
  - Creating administrative images of the components.....8
- Deployment - Active Directory ..... 10**
  - Prerequisites..... 10
  - Installation order ..... 10
  - Deployment steps..... 11
- Deployment - SMS server ..... 14**
  - Prerequisites..... 14
  - Installation order ..... 14
  - Deployment steps..... 15
  - Examples ..... 16

## **Introduction**

This guide provides instructions for installing the software associated with *Scan to PC Desktop* in a network environment.

Targeted users are administrators, Information Technology specialists or programmers who set up or perform network installations. It assumes the reader is familiar with Microsoft Windows 2000/2003 Server with Active Directory or with Microsoft Systems Management Server (SMS), in addition to program package setup, advertising and distribution.

Network installation enables a network administrator to manage and distribute software applications without the need to visit each client system.

First administrative images of the applications (the components of *Scan to PC Desktop*) should be created on the server. Then the server should be configured to automatically "push" the applications onto the client machines.

## Scan to PC Desktop software components

*Scan to PC Desktop* is delivered in two CD-ROM variants: *Special Edition* and *Professional Edition*.

These two editions of *Scan to PC Desktop* comprise different software products from ScanSoft. All the installers of these software components support MSI (Windows Installer-based) distribution.

Software components for *Special Edition CD-ROM*:

	Software component
1	<i>PaperPort 10.0 SE</i>
2	<i>OmniPage SE 3.0</i>
3	<i>Image Retriever 5.2 SE</i>

Software components for *Professional Edition CD-ROM*:

	Software component
1	<i>PaperPort Professional 10.0</i>
2	<i>OmniPage Pro 14.0 Office</i>
3	<i>Image Retriever 5.2 Pro</i>
4	<i>PDF Create! 2.0</i>
5	<i>PDF Converter 1.3</i>

Any combination of the products on the CD-ROMs can be installed under the following limitations:

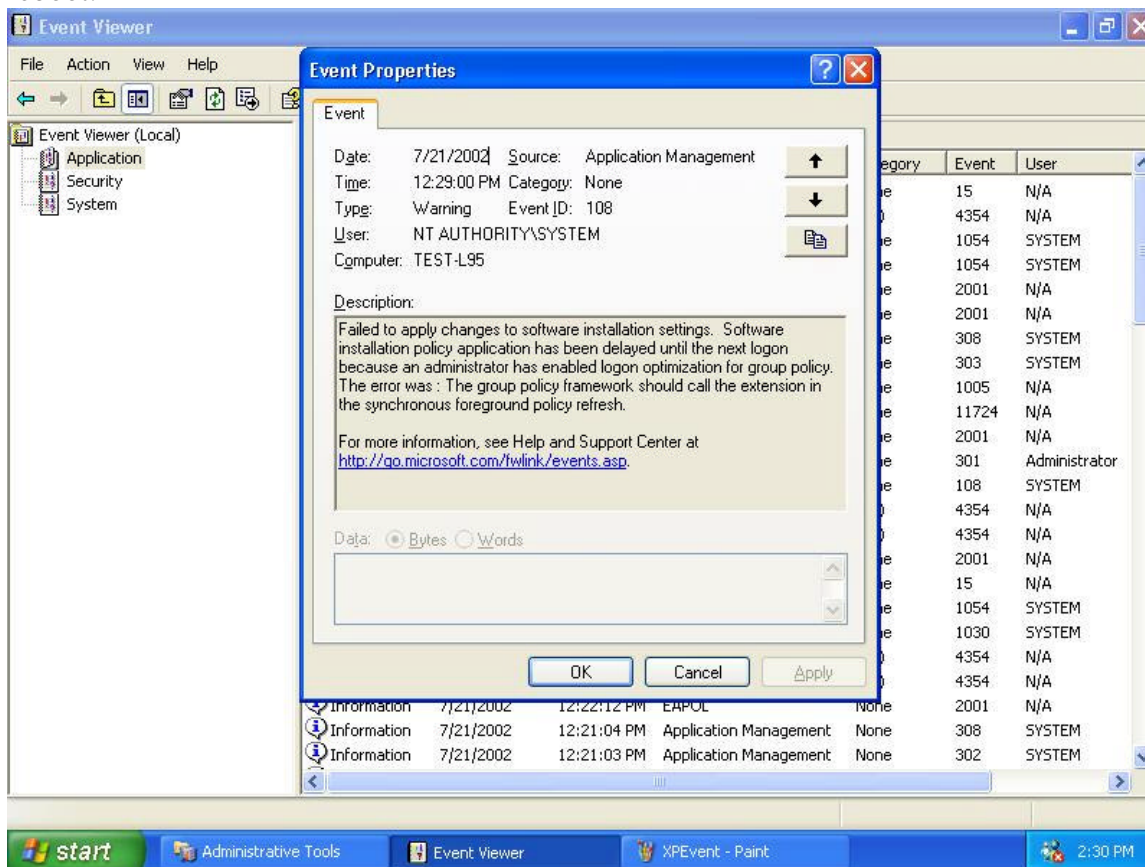
- 1.) To install Image Retriever, you must install PaperPort first.
- 2.) To ensure full functionality of PaperPort Pro, PDF Create! 2.0 must also be installed.

You can create as many administrative images on a network location as many software components *Scan to PC Desktop* includes.

## Windows 2000/2003 Server with Active Directory Support

Active Directory is a feature of Windows 2000 Advanced Server and Windows 2003 Server. Group Policy, a component of Active Directory, includes a Software Installation snap-in that enables an administrator to create a network installation. The administrator can use this feature to install software to Windows 2000 and Windows XP clients only. The snap-in cannot be used to install software to clients with older versions of the Windows operating system.

In general, Active Directory supports three main installation scenarios: *Publish to Users*, *Assign to Users*, and *Assign to Computers*. The software components of *Scan to PC Desktop* support the *Assign to Computers* scenario only. This will successfully install the software on next system reboot.



Installation can be delayed on Windows XP clients when the administrator enables logon optimization for group policy: for this type of installation, an entry can be viewed in the event log after the first reboot. The installation takes place silently, and the software is installed for all users of the given computer.

The screenshot above illustrates this case.

## Systems Management Server Support

Systems Management Server (SMS) provides a mechanism for pushing application installations out from the server to client systems. SMS supports the following versions of Windows: Windows 95, 98, Me, NT 4.0, 2000, and XP when installing products that use Windows Installer (MSI) technology. SMS requires a client application to be installed on all client machines. The software components of *Scan to PC Desktop* were tested using SMS version 2.0 with Service Pack 4.

SMS enables you to deploy a setup package *per User* or *per System*. The software components have been verified to work in the *per System* configuration only. The *per System* installation of the components can be configured to run either *unattended* or *attended*. Instructions for controlling this process are provided below.

All the software components of *Scan to PC Desktop* use Windows Installer Technology. The official Microsoft document describing the usage of Windows Installer-based applications with SMS (entitled "Deploying Windows Installer Setup Packages with Systems Management Server 2.0"). The document, is available at <http://www.microsoft.com/smsserver/techinfo/deployment/20/>

## Creating administrative images

This section describes how to create administrative images of the software components of *Scan to PC Desktop* onto the network.

Such an administrative installation will extract the necessary files into a network location specified during the installation. This location is also known as a *Software Distribution Point*.

An administrative installation will not install any program files.

Administrators can run an administrative installation from the command line by using the `/a` command line option. Users in a workgroup who have access to this administrative image can then install the product from this source.

```
SETUP /a
or
MSIEXEC /a <MSI-filename>
```

The following options can be used together with the SETUP executable:

Setup option	Description
<code>/a</code>	<b>Administrative</b> installation option. This instructs SETUP.exe to perform an administrative installation instead of a normal installation.
<code>/v</code>	Precedes the list of arguments or properties that are passed to the Windows Installer.
<code>/L</code> (followed by the Windows Language Code)	If applicable, specifies the setup language to use for installation. The following language codes are supported: <ul style="list-style-type: none"><li>• 1031=German</li><li>• 1033=English</li><li>• 1034=Spanish</li><li>• 1036=French</li><li>• 1040=Italian</li><li>• 1043=Dutch</li></ul>

## Creating administrative images of the components

### To create an administrative image on the network for any application

1. Use the below tables to locate the installer of *the application* on the CD-ROM.
2. Launch SETUP.exe or MSIEXEC with appropriate command line options including the administrative installation option:

```
SETUP /a
```

or

```
MSIEXEC /a "ScanSoft PaperPort 10.msi"
```

or e.g. for German setup language:

```
SETUP /a /L1031
```



3. If applicable, select a language for the administrative installation (not necessary if setup language was specified in the command line).
4. During installation, specify a target network location for the administrative image to be created.
5. Share this location (*Software Distribution Point*).

Software components and their installer locations for the *Special Edition*:

	<b>Software component</b>	<b>Installer location on the CD-ROM</b>	<b>Command</b>
1	<i>PaperPort 10.0 SE</i>	PP10SE\PaperPort	SETUP /A
2	<i>OmniPage SE 3.0</i>	OPSE3\OmniPage	SETUP /A
3	<i>Image Retriever 5.2 SE</i>	IR52SE	SETUP /A

Software components and their installer locations for the *Professional Edition*:

	<b>Software component</b>	<b>Installer location on the CD-ROM</b>	<b>Command</b>
1	<i>PaperPort Professional 10.0</i>	PP10PRO\PaperPort	SETUP /A
2	<i>OmniPage Pro 14.0 Office</i>	OP14OFFC	SETUP /A
3	<i>Image Retriever 5.2 Pro</i>	IR52PRO	SETUP /A
4	<i>PDF Create! 2.0</i>	PP10PRO\PaperPort\PDFCreate	COPY
5	<i>PDF Converter 1.3</i>	OP14OFFC\OmniPage\PDFConv	MSIEXEC /A

**Note**

Do not perform an administrative installation for PDF Create! 2.0. Instead, simply copy its installer onto the target network location.

## Deployment - Active Directory

This section describes how to install the software components of *Scan to PC Desktop* onto clients' systems using Active Directory.

### Prerequisites

- A working Active Directory environment.
- A *Software Distribution Point* (with administrative images of the software components)
- A deployment target computer that is a member of a domain, site, or organizational unit.
- MSI 2.0 installed on the target computer.

### Installation order

Before starting to install any component of *Scan to PC Desktop*, please ensure that InstallShield's Installscript engine be installed on the target computer.

You can find the Installscript engine installer (ISSCRIPT8.msi) in the folder of each component (e.g. in PP10PRO\PaperPort) on the CD-ROM.

Once the Installscript engine is installed, the different components can be installed in any combination. Note that the installation of PaperPort must precede that of Image Retriever. Please note also that during the installation of PaperPort Pro, PDF Create! 2.0 must also be installed. The preferred order of the installations of the different components is the following:

Software components and their installers for the *Special Edition*:

	Software component	Installer
1	<i>Installscript engine</i>	ISSCRIPT8.msi
2	<i>PaperPort 10.0 SE</i>	ScanSoft PaperPort 10.msi
3	<i>OmniPage SE 3.0</i>	ScanSoft OmniPage SE 3.0.msi
4	<i>Image Retriever 5.2 SE</i>	Image Retriever 5.2.msi

Software components and their installers for the *Professional Edition*:

	Software component	Installer
1	<i>Installscript engine</i>	ISSCRIPT8.msi
2	<i>PaperPort Professional 10.0</i>	ScanSoft PaperPort 10.msi
3	<i>PDF Create! 2.0</i>	ScanSoft PDF Create 2.0.msi and ScanSoft PDF Create 2.0-<lang>.msi
4	<i>OmniPage Pro 14.0 Office</i>	ScanSoft OmniPage Pro 14.0.msi
5	<i>PDF Converter 1.3</i>	ScanSoft PDF Converter.msi
6	<i>Image Retriever 5.2 Pro</i>	Image Retriever 5.2.msi

Note: To install *PDF Create! 2.0* properly, two installations must be completed.

## Deployment steps

This procedure describes how to install a given component of *Scan to PC Desktop*.

You must repeat the steps below, as many times as many software component installations are needed.

1. Open Administrative Tools\Active Directory Users and Computers, select the object, then a domain, site, or organization unit. Create a Group Policy Object as follows:
  - a. Right-click the domain or the selected container.
  - b. Select **Properties**, click the **Group Policy** tab, select **New**, and then name the new policy.
  - c. Close the Active Directory Users and Computers dialog box.
2. Use Microsoft Management Console (MMC) to open the new Group Policy Object:
  - a. In the **Run** command dialog box, type **mmc** to open Console1.
  - b. Navigate to Console\Add\Remove Snap-in, click the **Add** button, and then select **Group Policy** from the menu list.
  - c. Select the Group Policy Object that you have just created.
3. Configure the new Group Policy Object to install the software component as follows:
  - a. Under the console root\Group Policy <name>, select **Computer Configuration**, **Software Settings**, right-click **Software Installation**, select **New**, and then **Package**.

*Note: InstallShield's Installscript engine must be installed before installing any component of Scan to PC Desktop. That is, the Installscript engine installer (ISSCRIPT8.msi) must be the very first software installation package.*
  - b. Browse to the shared network folder (administrative image) that contains the component's installation package and select its installer for the package. (e.g. **ScanSoft PaperPort 10.msi**)

The component properties dialog box opens. In the General tab, the name of the software component (e.g. PaperPort Professional 10) will be listed under Name.

*Note: The installer names for the components are listed below in the Professional and Standard tables.*
  - c. In the Deployment tab, under Deployment Type, select **Assigned**, and make sure that **Basic** is selected under Installation User Interface Option.
  - d. To specify the installation language, go to the Modification tab, click the Add button and choose the appropriate language transform file.

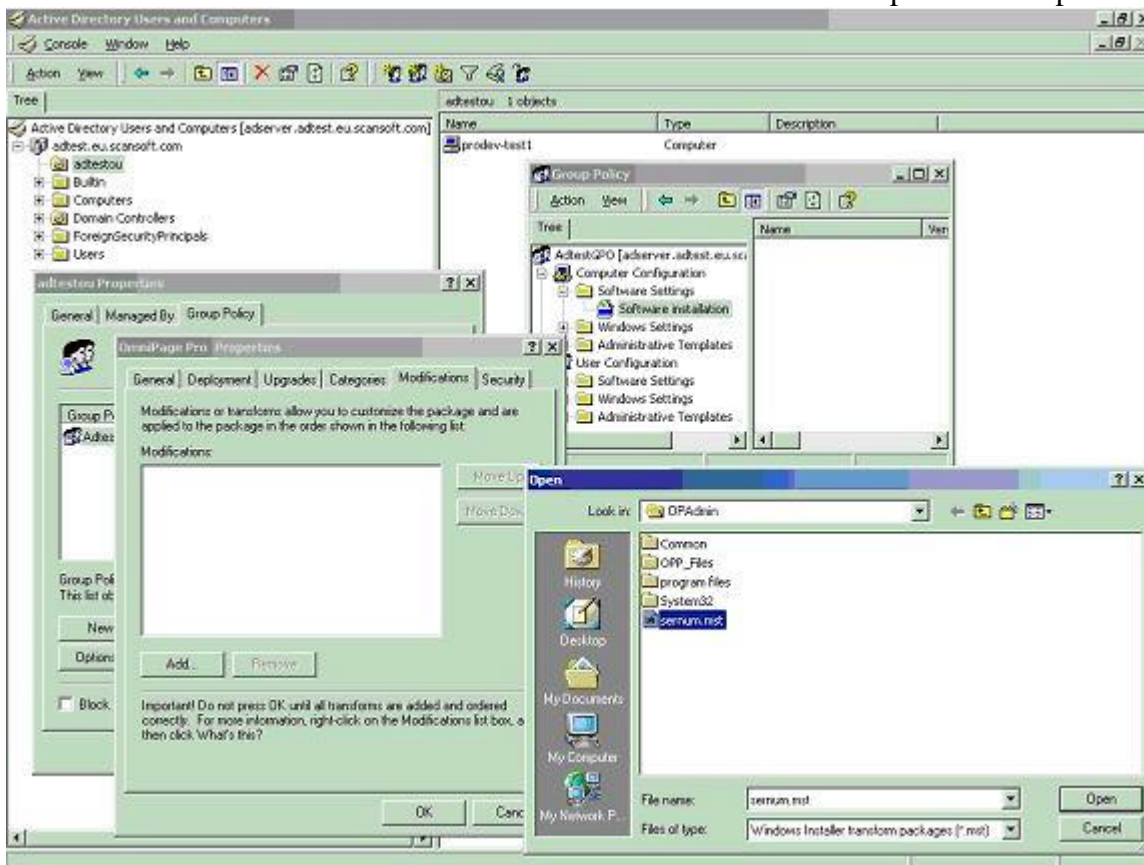
*Note: If the installer of the software component supports more than one UI languages, and you need a non-English installation, one of the language transform files must also be specified. (For example, to specify a German installation, add the file 1031.mst.)*  
*To read more about Windows Language Codes for the language transform files, see the chapter "Creating administrative images".*
  - e. Add further installer transform file(s), if necessary.

*Note: When installing PDF Converter 1.3, the addition of the transform file "ScanSoft PDF Converter.mst" is also required.*

- f. Close the dialog box, and then select **Software Installation**.

The settings for the installation package will be displayed on the right side of the screen, and the component will be installed to the targeted client systems upon their restart.

The installation is a "silent install" and is installed for all users on the specified computer.



Software components and their installers for the *Special Edition*:

Software component	Installer
<i>InstallShield Installscript engine</i>	ISSCRIPT8.msi
<i>PaperPort 10.0 SE</i>	ScanSoft PaperPort 10.msi
<i>OmniPage SE 3.0</i>	ScanSoft OmniPage SE 3.0.msi
<i>Image Retriever 5.2 SE</i>	Image Retriever 5.2.msi

Software components and their installers for the *Professional Edition*:

Software component	Installer
<i>InstallShield Installscript engine</i>	ISSCRIPT8.msi
<i>PaperPort Professional 10.0</i>	ScanSoft PaperPort 10.msi
<i>PDF Create! 2.0</i>	ScanSoft PDF Create 2.0.msi
<i>OmniPage Pro 14.0 Office</i>	ScanSoft OmniPage Pro 14.0.msi
<i>PDF Converter 1.3</i>	ScanSoft PDF Converter.msi
<i>Image Retriever 5.2 Pro</i>	Image Retriever 5.2.msi

Microsoft introduced a new feature in Windows XP called Fast Logon Optimization. This feature will typically log the user in quickly even off the network.

This causes software installation via group policy to sometimes take many reboots to actually install managed software (you must reboot at least once after the group policy change just to refresh the policy on the local machine plus once to install the software).

For more details see the following Microsoft website:

<http://www.microsoft.com/technet/prodtechnol/windowsserver2003/library/Operations/ae11795f-6d3c-44b4-a231-7670dc6c05e1.mspx>

## Deployment - SMS server

This section describes how to install software components of *Scan to PC Desktop* onto a client's system using SMS Server.

### Prerequisites

- A *Software Distribution Point* (with administrative images of the software components)
- A deployment target computer that is a member of a domain, site, or organizational unit.
- MSI 2.0 installed on the target computer.

### Installation order

Before starting to install any component of *Scan to PC Desktop*, please ensure that InstallShield's Installscript engine be installed on the target computer.

You can find the Installscript engine installer (ISSCRIPT8.msi) in the folder of each component (e.g. in PP10PRO\PaperPort) on the CD-ROM.

Once the Installscript engine is installed, the different components can be installed in any combination.

*Note that successful installation of Image Retriever requires a preceding PaperPort installation. Please also note that PDF Create! 2.0 installation is required for that of PaperPort Pro.*

The preferred order of the installations of individual components is the following:

Software components and their installers for the *Special Edition*:

	Software component	Installer
1	<i>Installscript engine</i>	ISSCRIPT8.msi
2	<i>PaperPort 10.0 SE</i>	ScanSoft PaperPort 10.msi
3	<i>OmniPage SE 3.0</i>	ScanSoft OmniPage SE 3.0.msi
4	<i>Image Retriever 5.2 SE</i>	Image Retriever 5.2.msi

Software components and their installers for the *Professional Edition*:

	Software component	Installer
1	<i>Installscript engine</i>	ISSCRIPT8.msi
2	<i>PaperPort Professional 10.0</i>	ScanSoft PaperPort 10.msi
3	<i>PDF Create! 2.0</i>	ScanSoft PDF Create 2.0.msi
4	<i>OmniPage Pro 14.0 Office</i>	ScanSoft OmniPage Pro 14.0.msi
5	<i>PDF Converter 1.3</i>	ScanSoft PDF Converter.msi
6	<i>Image Retriever 5.2 Pro</i>	Image Retriever 5.2.msi

## Deployment steps

Please follow the instructions below to install the components of *Scan to PC Desktop* appropriately.

If the installer of any software component supports more than one UI languages, and a non-English installation is needed, one of the language transform files must also be specified in the command-line (Presented as `<LANG-TRFILE.mst>` below). For example, to specify a German installation, use the following transforms tag:

```
TRANSFORMS="1031.mst"
```

**Note:** To read more about Windows Language Codes for the language transform files see the chapter "Creating administrative images".

1. To install the *Installscript engine*, use the following command-line:

```
MSIEXEC /i ISSCRIPT8.msi /q
```

2. To install *PaperPort Professional 10*, use the following command-line:

```
MSIEXEC /i "ScanSoft PaperPort 10.msi" ALLUSERS=2  
TRANSFORMS=<LANG-TRFILE.mst> /qb+
```

3. To install *PDF Create! 2.0*, you must use **both** command-lines below:

```
MSIEXEC /i "ScanSoft PDF Create 2.0.msi"  
TRANSFORMS=<LANG-TRFILE.mst> /qb+  
  
MSIEXEC /i "ScanSoft PDF Create 2.0-<LANG>.msi" /qb+
```

where `<LANG>` is one of language abbreviation code for the supported languages: Por (for Brazilian-Portuguese), Eng (for English), Fre (for French), Ita (for Italian), Ger (for German), Spa (for Spanish).

4. To install *OmniPage Pro 14 Office*, use the following command-line:

```
MSIEXEC /i "ScanSoft OmniPage Pro 14.0.msi" ALLUSERS=2  
TRANSFORMS=<LANG-TRFILE.mst> /qb+
```

5. To install *PDF Converter 1.3*, use the following command-line:

```
MSIEXEC /i "ScanSoft PDF Converter.msi" TRANSFORMS=  
"ScanSoft PDF Converter.mst;<LANG-TRFILE.mst>" /qb+
```

6. To install *Image Retriever 5.2 Pro* or *Image Retriever 5.2 SE* use the following command-line:

```
MSIEXEC /i "Image Retriever 5.2.msi" ALLUSERS=2  
TRANSFORMS=<LANG-TRFILE.mst> [<wfolder>] /qb+
```

where the optional `<wfolder>` parameter can be used to specify a base folder in the network for the Image Retriever's folder watching feature. For the current user of Image Retriever, it will watch a subfolder of this base folder. The name of this subfolder will be the user's login name. This way Image Retriever can be configured during installation.

The `<wfolder>` parameter has the following syntax:

```
WATCHFOLDER=<path>
```

7. To install *PaperPort 10 SE*, use the following command-line:

```
MSIEXEC /i "ScanSoft PaperPort 10.msi" ALLUSERS=2
TRANSFORMS=<LANG-TRFILE.mst> /qb+
```

8. To install the *OmniPage SE 3.0*, use the following command-line:

```
MSIEXEC /i "ScanSoft OmniPage SE 3.0.msi" ALLUSERS=2
TRANSFORMS=<LANG-TRFILE.mst> /qb+
```

You can now advertise the packages to your SMS clients.

## Examples

1. To install the *PaperPort Professional 10* with **English user interface**, use the following command-line:

```
MSIEXEC /i "ScanSoft PaperPort 10.msi" ALLUSERS=2
TRANSFORMS=1033.mst /qb+
```

2. To install the *PaperPort Professional 10* with **German user interface**, use the following command-line:

```
MSIEXEC /i "ScanSoft PaperPort 10.msi" ALLUSERS=2
TRANSFORMS=1031.mst /qb+
```

3. To install the *PDF Create! 2.0* with **German user interface**, use **both** command-lines below:

```
MSIEXEC /i "ScanSoft PDF Create 2.0.msi"
TRANSFORMS=1031.mst /qb+
```

```
MSIEXEC /i "ScanSoft PDF Create 2.0-Ger.msi" /qb+
```

4. To install the *OmniPage Pro 14 Office* with **English user interface**, use the following command-line:

```
MSIEXEC /i "ScanSoft OmniPage Pro 14.0.msi" ALLUSERS=2
TRANSFORMS=1033.mst /qb+
```

5. To install the *OmniPage Pro 14 Office* with **German user interface**, use the following command-line:

```
MSIEXEC /i "ScanSoft OmniPage Pro 14.0.msi" ALLUSERS=2
TRANSFORMS=1031.mst /qb+
```

6. To install the *PDF Converter 1.3* with **English user interface**, use the following command-line:

```
MSIEXEC /i "ScanSoft PDF Converter.msi"
TRANSFORMS="ScanSoft PDF Converter.mst;1033.mst" /qb+
```

7. To install the *PDF Converter 1.3* with **German user interface**, use the following command-line:

```
MSIEXEC /i "ScanSoft PDF Converter.msi"
TRANSFORMS="ScanSoft PDF Converter.mst;1031.mst" /qb+
```

8. To install the *Image Retriever 5.2 Pro* or *Image Retriever 5.2 SE* with **German user interface**, use the following command-line:

```
MSIEXEC /i "Image Retriever 5.2.msi" ALLUSERS=2
TRANSFORMS=<LANG-TRFILE.mst> [<wfolder>] /qb+
```

9. To install *Image Retriever 5.2 Pro* or *Image Retriever 5.2 SE* with **English user interface** and to specify the folder to watch, use the following command-line:

```
MSIEXEC /i "Image Retriever 5.2.msi" ALLUSERS=2
TRANSFORMS=<LANG-TRFILE.mst> [<wfolder>] /qb+
WATCHFOLDER="\\OMEGA\SCANS" /qb+
```



10. To install the *PaperPort 10 SE* with **German user interface**, use the following command-line:

```
MSIEXEC /i "ScanSoft PaperPort 10.msi" ALLUSERS=2  
TRANSFORMS=1031.mst /qb+
```

11. To install the *OmniPage SE 3.0* with **English user interface**, use the following command-line:

```
MSIEXEC /i "ScanSoft OmniPage SE 3.0.msi" ALLUSERS=2  
TRANSFORMS=1033.mst /qb+
```