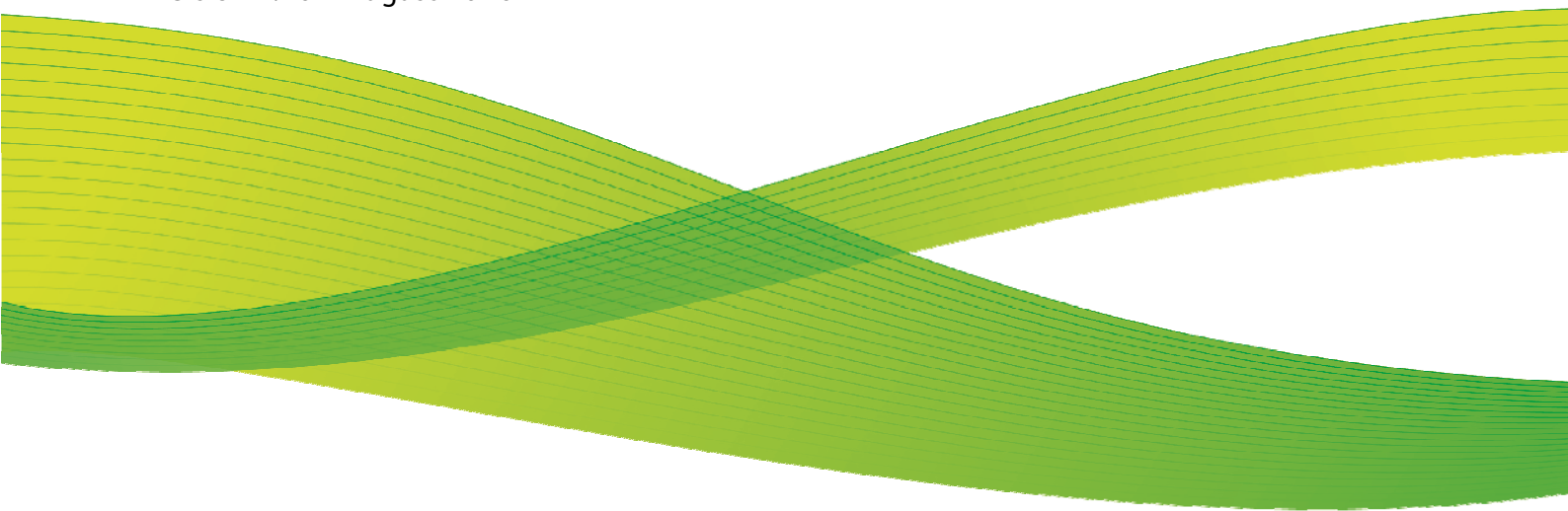




Xerox Wide Format FreeFlow Accxes Copy and FreeFlow Accxes Copy Touch

Release Notes

Version 1.10 – August 2016



Introduction

This document forms an addendum to the user documentation for Xerox FreeFlow Accxes Xerox FreeFlow Accxes Copy.

The following pages explain the use of a Xerox 7740 or Xerox 7742 wide format scanner connected directly by USB to a PC running v1.7 (v1.10 for Xerox 7742) or greater of Accxes Copy, and use of the new Accxes Copy Touch software.

Accxes Copy Touch is the core controller for the Xerox 7142 MFP solution.

Contents

| | |
|---|----|
| Introducing Accxes Copy Touch..... | 4 |
| Supported Platforms | 5 |
| Accxes Copy Touch Features Summary | 6 |
| Using Accxes Indexer and Accxes Copy Simultaneously | 6 |
| Licensing | 6 |
| Installation..... | 7 |
| Xerox 7740 and Xerox 7742 Scanner Windows Driver..... | 8 |
| Configuring Accxes Copy | 9 |
| Scanner Calibration | 10 |
| Xerox Touch Screen User Interface | 11 |
| Configuring Accxes Copy Touch..... | 11 |
| Scanning Window | 13 |
| Document Types And Settings | 14 |
| Scan Settings | 15 |
| Touch Screen Controls in Accxes Copy..... | 16 |
| Accxes Copy Touch User Interface | 17 |
| Touch Screen Controls in Accxes Copy Touch | 21 |
| Colour Copying with Xerox 6705 | 22 |
| Known Issues | 33 |
| Changes In This Release..... | 34 |

Introducing Accxes Copy Touch and Xerox 7142 MFP

This release includes the new Xerox FreeFlow Accxes Copy Touch software. This version of is included with all Accxes Copy new purchases.

Accxes Copy Touch extends the functionality of Accxes Copy, providing a powerful touch screen wide format copy system for Colour and Monochrome documents. Accxes Copy Touch is the core of the Xerox 7142 MFP wide format colour solution.

7142 MFP Configuration with Accxes Copy Touch.



Supported Platforms

The Accxes Copy Touch software must run on a Windows 7 or greater PC with the Xerox 7740 or 7742 scanner.

Minimum Recommend Specifications:

- Intel Core 2 Duo 2.0Ghz, 2GB RAM, 50GB Available disk space
- Windows 7 or Windows 8 (64 bit recommended).
- Available USB 2 port for scanner connection (USB hub is not supported)
(USB 3 is required for full performance with 7742 scanner)
- Available USB port for touch screen connection.
(From v1.10, All In One touch screen PCs such as Dell 3030 platform are also supported).
- Network interface

A 64bit operating system is required for best performance.

Note: Wide format documents scanned at high resolutions can be several Gigabytes in size. Additional RAM and hard disk space may be required for optimum performance.

Accxes Copy Touch Features Summary

Copying:

This release of Accxes Copy Touch supports Colour and Mono Copying to the Xerox 7142 with full synco cut and auto rotate for optimum paper usage.

Like the Accxes Copy Software, Accxes Copy Touch also supports any printer with a Windows Driver. Users can select the required printer from the touchscreen UI.

Colour calibration, print speed, reduction/enlargement and copy count can all be controlled from the main touch screen. Simple, yet powerful, touchscreen image enhancement tools are also provided.

The system is fully concurrent, with the printer working independantly of the scanner, allowing users to complete there tasks quickly and efficiently.

Scanning:

This release of Accxes Copy Touch supports Colour and Mono scan to file. From the touchscreen UI, users can select from a number of predefined folders, which may be on the local PC or shared network drives. Direct scanning to single page TIFF, JPEG and PDF/A is supported at this time. Accxes Indexer can be used to enable multi-page if required. Reduction and enlargement is also supported when scanning.

Printing:

Accxes Copy Touch alone provides only copying and scanning support.

Basic printing demand can be achieved using the Windows drivers direct to the printer. Optionally Accxes Control 7142 or Accxes Control Pro can be installed on the same PC as Accxes Copy Touch to provide a host of benefits including Postscript/PDF support, batch prining, colour/size splitting and more.

This provides a scaleable configuration to match varying customer requirements and budgets.

Using Accxes Indexer, Accxes Copy or Accxes Copy Touch Simultaneously

Attempting to run any combination of Accxes Indexer, Accxes Copy or Accxes Copy Touch at the same time, will result in unpredictable behaviour. Only one application can use the scanner at one time.

Licensing

This release is supported by the same license files as Accxes Productivity Tools v1.0. Please see the user guide for details.

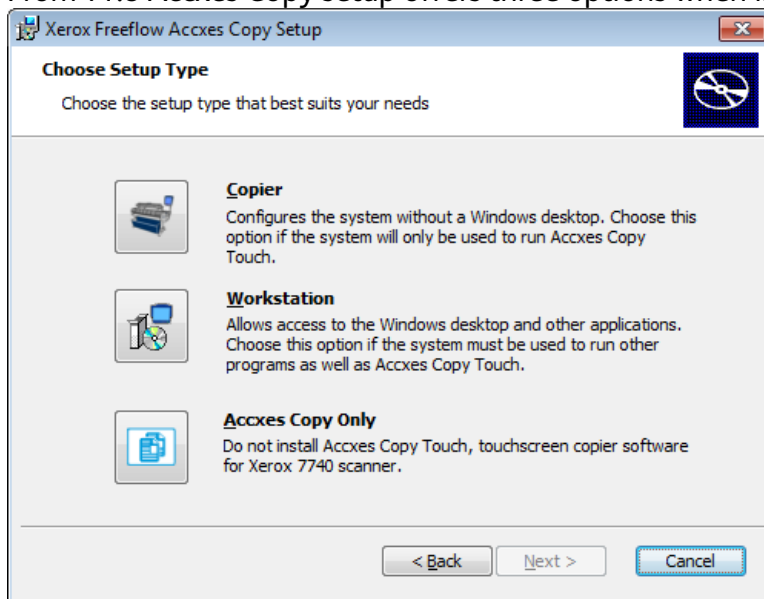
Installation

The Accxes Copy software should be installed before connecting the Xerox 7740 or Xerox 7742 scanner and touch screen user interface to the PC.

To install and activate the software, follow the Accxes Copy installation instructions found in the user guide. During installation the printer and scanner configuration pages will display. When this configuration appears, please connect the Xerox 7740 or Xerox 7742 scanner to a free USB port and power on the scanner. Please read the following pages to ensure the scanner is correctly configured and calibrated.

Once the software and scanner are installed, shut down the PC, then connect the USB and video cable for the touch screen display.

From v1.8 Accxes Copy setup offers three options when installed on Windows 7 or above:



Copier

Select this option for dedicated touch screen copy systems. The PC will be configured to boot directly into the Accxes Copy Touch interface. Windows explorer, the task bare and start menu are all disabled. The PC will shutdown when Accxes Copy Touch is exited.

Workstation

Select this option if the PC will be used for running other applications as well as Accxes Copy Touch. In this mode Accxes Copy Touch must be launched manually from the start menu, and the PC will not shut down when it is exited. The Accxes Copy Touch UI will show the mouse cursor, have a minimize button and allow movement around the screen by dragging the black bare at the top. The user will have access to all other software on the PC as normal.

Accxes Copy Only

The Accxes Copy Touch touchscreen interface is not installed. Select this where Accxes Copy software is to be used with Accxes connected scanners, like the Xerox 6605.

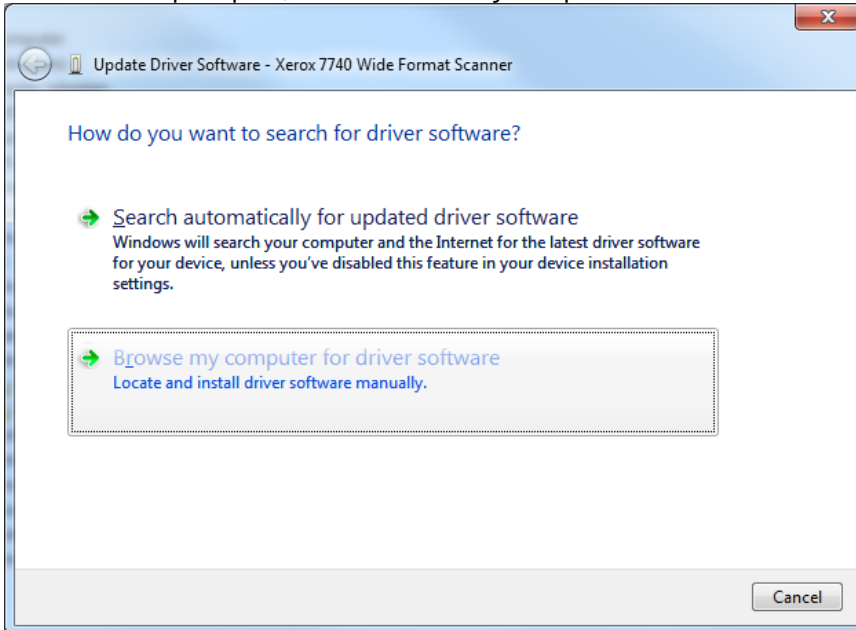
NOTE: On Windows XP, Accxes Copy Only is automatically used as the other options are not supported

Xerox 7740 or Xerox 7742 Scanner Windows Driver

The windows driver for the Xerox 7740 or Xerox 7742 scanner will be automatically installed with Accxes Copy. After installing the software, connect the scanner to the USB port and it should be detected and a driver installed automatically.

If the scanner is not detected it is possible to install the driver manually, from the Drivers folder on the CD. If automatic driver installation fails, the installer will notify you where to find the files for manual installation. To perform a manual installation follow these instructions:

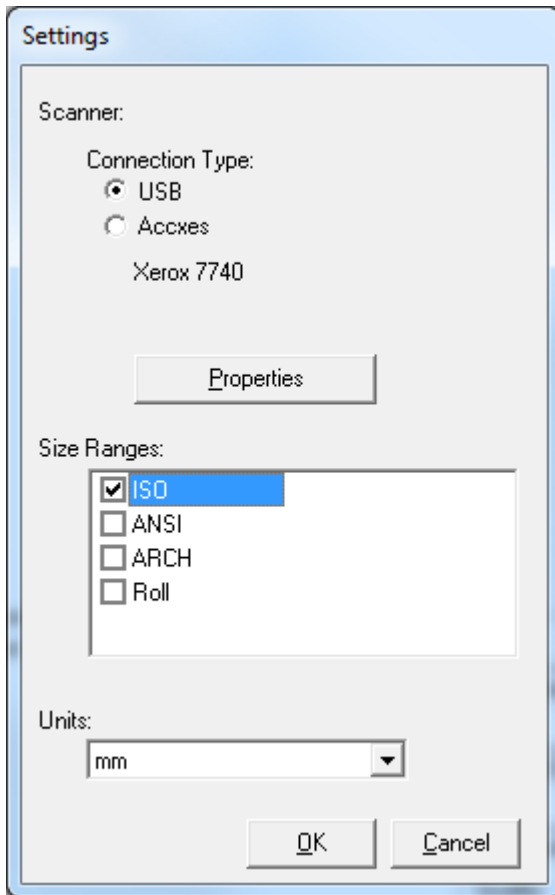
- When prompted, choose 'Browse My Computer For Driver Software'



- When prompted, browse to the Drivers folder on the CD.

Configuring Accxes Copy

In the Accxes Copy settings window there is an option in the source tab to choose a USB scanner:



If the scanner is connected and driver installed correctly, the scanner model will be displayed when the USB option is selected. If the message 'No Scanner Detected' is displayed, please check the scanner is connected and the driver is installed according to the instructions above. The properties button displays more details about the scanner, and allows it to be calibrated (see below).

Scanner Calibration

The properties button in the settings window gives access to tools for performing scanner Normalisation and Stitch. These steps should be performed at any new installation, and at any time when the scanner is not producing satisfactory quality documents.

IMPORTANT NOTE:

As of Accxes Copy v1.5.100 and Accxes Indexer v1.5.48 the normalisation process is different to that on a Accxes Controller. Therefore you must perform a normalisation in Accxes Copy/Indexer when moving a scanner that has been used with an Accxes Controller. You must also perform normalisation on an Accxes Controller when moving a scanner that has been used with Accxes Copy/Indexer.

IMPORTANT NOTE 2:

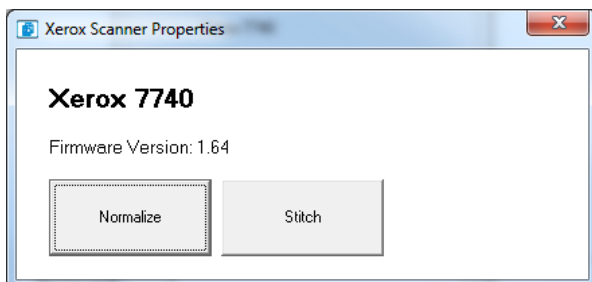
From September 2011, Xerox 7740 Scanners included a new illumination source. The normalisation process in from version 1.8 has changed to support this. The new settings should also work with older scanners, however in case of problems (appearance of vertical stripes when scanning) this can be overridden by setting the following value in the windows registry:

Accxes Indexer:

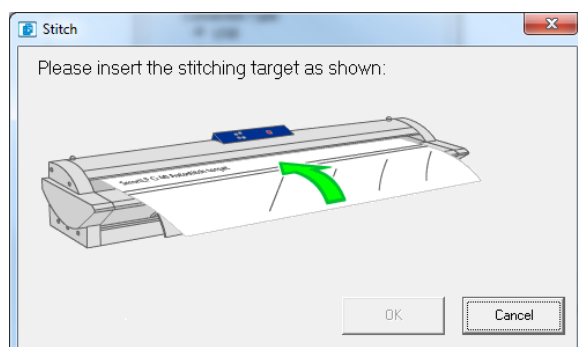
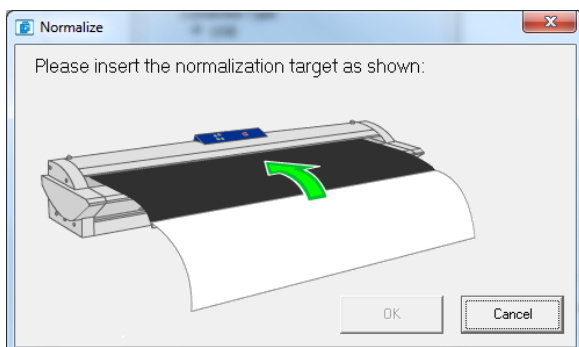
Key: HKEY_LOCAL_MACHINE\SOFTWARE\Xerox\Freeflow Accxes\Accxes Indexer\Scanner
String Value: UseOldLedVals = 1

Accxes Copy:

Key: HKEY_LOCAL_MACHINE\SOFTWARE\Xerox\Freeflow Accxes\Accxes Copy\Scanner
String Value: UseOldLedVals = 1



To calibrate the scanner, please follow the on screen instructions:



Xerox Touch Screen User Interface



The drivers supplied for this device must be installed *before* connecting it to the PC. They will be automatically installed as part of the Accxes Copy v1.7 setup on a Windows 7 system.

NOTE: Windows 7 or above is required to use the Xerox Touch Screen User Interface.

Power Saver Light

When you first connect the touch screen, the green power saver light will show, and the screen will remain black.

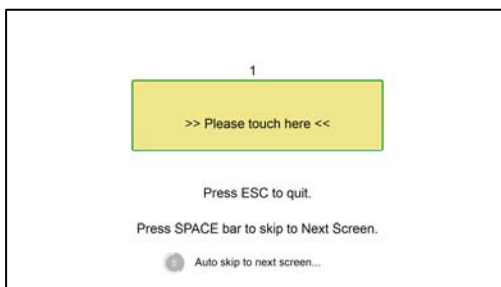
If the touch screen drivers are installed correctly, the green power saver light at the bottom of the screen will go out, and the screen will power up during the computers start up sequence. It is normal for the screen to be black for the first few minutes of the boot sequence.

Resolution

The touch screen should be configured at a resolution of 1024x768 for optimum performance.

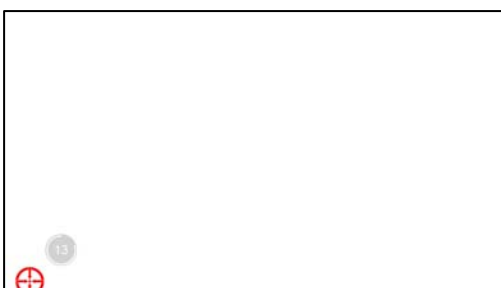
Calibration

The first time you connect the touch screen, it must be calibrated to work correctly. The system will automatically prompt you to do this. You can run the procedure again at any time, by selecting the Calibrate Touch Screen option from the Xerox, FreeFlow Accxes section of your start menu.



Step 1

Touch the screen to identify it as a touch screen. If you have multiple monitors connected, press space until this message is shown on the Xerox touch screen.



Step 2

A red target is shown in the corner of the screen. Hold your finger on the centre of the target until the circle completes.

Repeat for each corner of the screen.

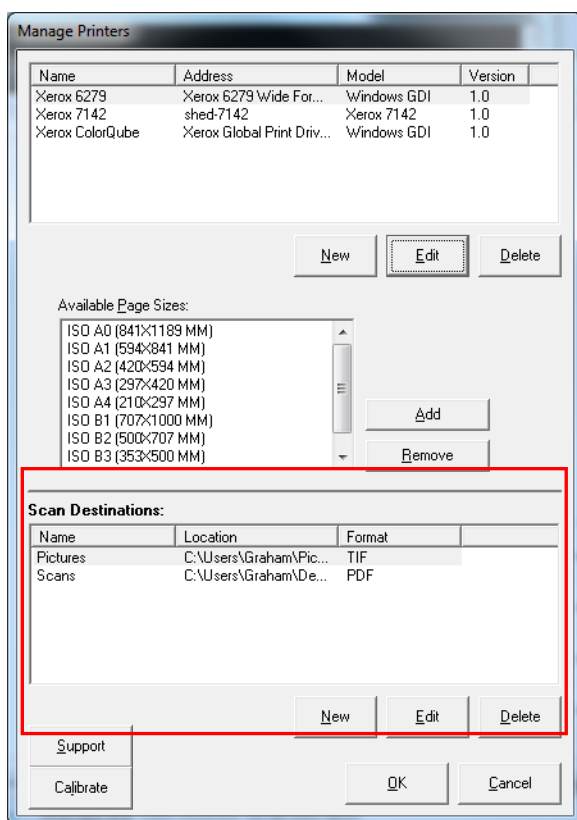
Configuring Accxes Copy Touch

Accxes Copy Touch shares its printer configuration and calibration with Accxes Copy. Please follow the Accxes Copy user guide to set up and calibrate Accxes Copy before using Accxes Copy Touch.

Configuring Accxes Copy requires use of a keyboard and mouse. However, once configuration is complete, these can be removed and the system can be operated just from the touch screen if required.

Scanning Folders

Accxes Copy v1.7 includes an extra section in the configuration window for Accxes Copy Touch Scanning Folders. Use this window to add, remove and edit folders on the local PC or network that will be available for users to scan documents to. For each folder you must also choose the file format (TIFF or PDF).



Colour Calibration

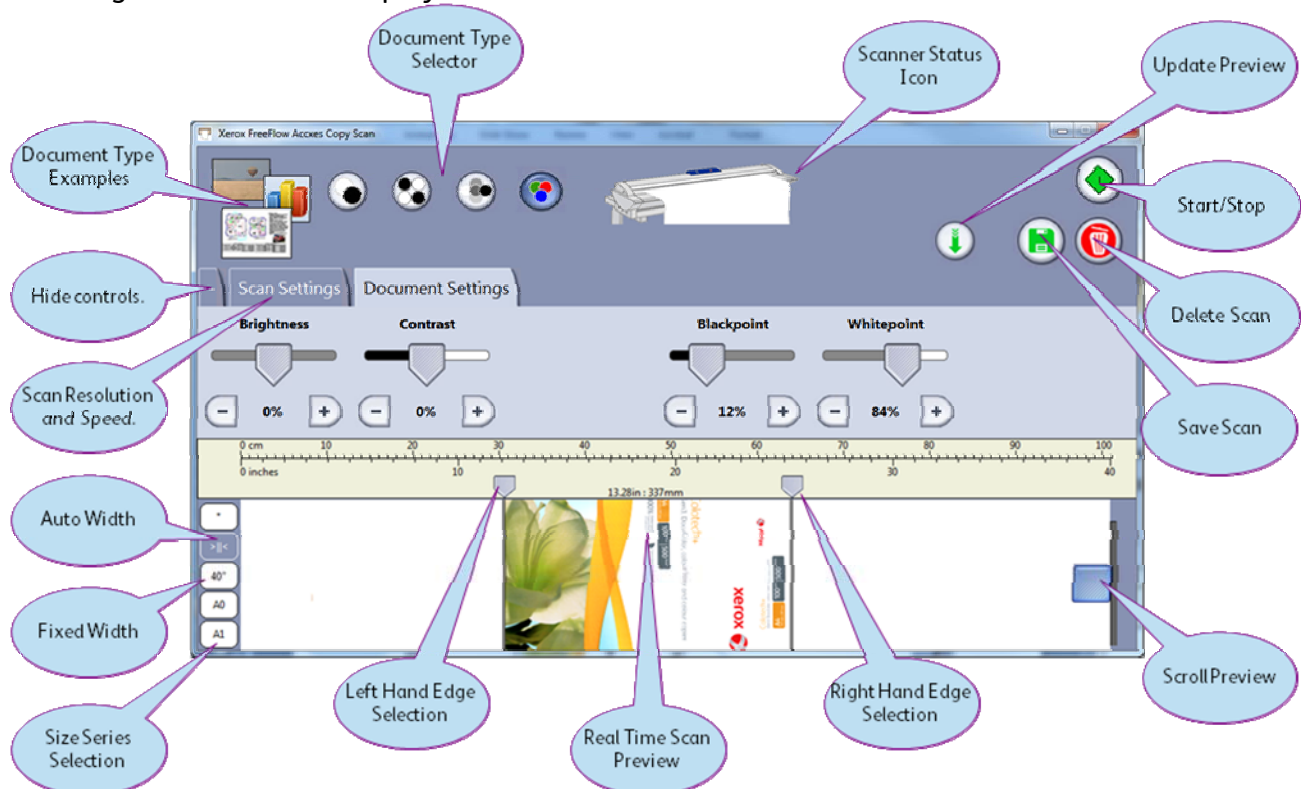
Accxes Copy v1.8 includes a button to launch the Accxes Copy UI to perform colour calibration. Once the Accxes Copy UI starts you can perform colour calibration of printers and qualities using the normal process documented in the user guide.


Remote Support

From version 1.8 of Accxes Copy Touch, should technical support be required please contact your normal Xerox support centre. In the case that a PIN number is provided for remote support, this can be entered using the Support button in the configuration window.

Accxes Copy 7740 or 7742 Scanning Window

When Accxes Copy is configured for a USB connected (Xerox 7740 or Xerox 7742) scanner, a scanning Window will be displayed when a document is inserted into the scanner:




When the window first opens you have chance to select the required settings (document type, speed, resolution), then click  to start scanning.


When the scan is complete, check the width and make any required adjustments.

- Width can be controlled by selecting a size on the left, or just dragging the edge markers to the desired positions.
- Image quality can be controlled from the Document Settings tab. (See next section for details)

Shortly after making adjustments to the document settings, the preview will update automatically to show the changes.

You can also force the preview to update by clicking .

If the scan is unsatisfactory, click  to delete the scan.

Otherwise click  to save the scan. It is possible to make multiple copies or save multiple files from one document but making adjustments, then clicking the save button again.

It is also possible to change document type after scanning, for example from Mono to Greyscale, or Colour to Mono. However, it is not possible to change to colour if the document was scanned in greyscale or mono mode.

Alternatively batch scanning is possible by simply inserting the next document. The previous scan is automatically accepted when the next document is inserted into the scanner.



NOTE: These buttons are not shown if using a Xerox Touch Screen user interface, as buttons on the screen are used instead. See the touch screen section for details.

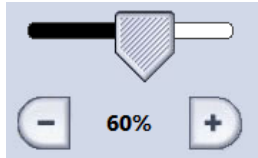
Document Types and Settings

The following document types and quality controls are available:



Black and White Lines and Text

1 bit monochrome scanning



Use this slider to select the threshold for black. Lower values for darker originals.



Black and White Mixed Text and Pictures

1 bit halftone scanning



Use these sliders to select the darkest and lightest points of the image



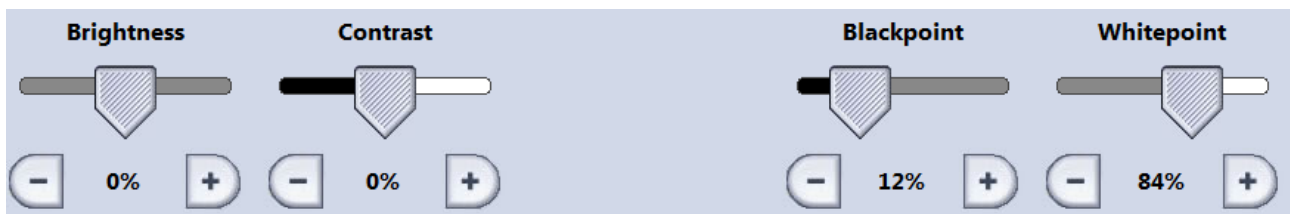
Greyscale Photo

8bit continuous tone scanning



Colour

24bit RGB continuous tone scanning



In both Greyscale and Colour modes, the above controls are available.

Brightness: Lighten or darken the whole image.

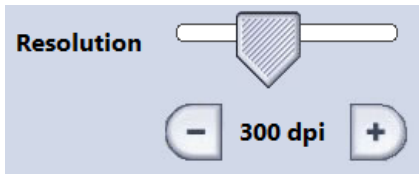
Contrast: Increase or reduce definition between colours.

Blackpoint: Increase this to improve black levels and darken shadow areas.

Whitepoint: Decrease this to clean up background to a clean white, and lighten highlights.

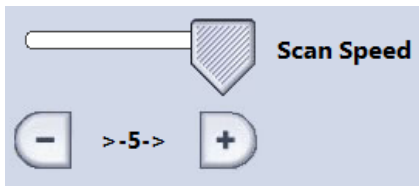
Scan Settings

Resolution Selection:



You can scan between 100dpi and 600dpi in 50dpi steps. Be aware 600dpi greyscale and colour scans create very large files. Between 200 and 300dpi is recommended for most applications.

Scan Speed:



This slider controls the speed the paper moves through the scanner. Colour scans will always be around 1/3 of the speed of monochrome scans.

- 5 is fastest, 1 slowest.
- Reduce the speed for enhanced quality and/or delicate documents.
- At the highest speed the scanner may stop and start during the scan. This behaviour can be minimised by closing other programs and or upgrading the processor and memory in the PC used for scanning.

Hard Button Controls

A number of hard buttons are located below the Xerox touch screen. When using Xerox FreeFlow Accxes Copy software with a Xerox 7740 or Xerox 7742 scanner, these buttons replace some on screen controls.

Power Saver Button

This button operates at all times.

It causes your PC display to enter low power (standby) mode. The button will light up green while the system is in power saver mode. Press it again to reactive the system.

Start Button (Green)

When the scanner window is showing, this button performs the following tasks:

- a) If no preview is currently displayed, begin scanning when a document is loaded.
- b) If a preview is currently displayed, save the scan with the current settings.

Stop Button (Red)

When the scanner window is showing, this button performs the following tasks:

- a) If currently scanning, abort the scan process.
- b) If no preview is currently displayed, do not scanning when a document is loaded.
- c) If a preview is currently displayed, delete it and clear the screen.

Clear Button (Yellow)

When the scanner window is showing, this button performs the following task:
Clear the current scan preview.

Services Button

When the scanner window is showing, this button performs the following task:
Close the scanning window and return to the Accxes Copy or Accxes Indexer window.
Any currently displayed preview will be saved.

Accxes Copy Touch User Interface

Accxes Copy Touch provides a standard Xerox Multi-Function user interface. The interface runs full screen on the Xerox touch screen display and also requires the hard-buttons on the bottom of the display to operate.

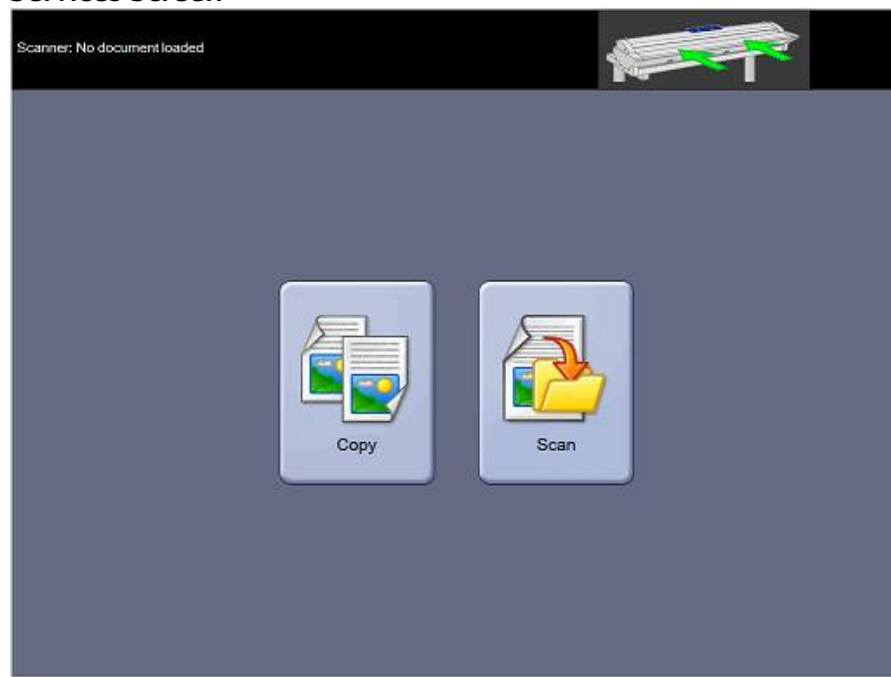
NOTE: This application is designed to provide a copy interface on a dedicated PC, that may not have a keyboard or mouse connected. Therefore the application is configured to launch at login and will shut down the PC on exit.

To change the start-up behaviour remove the program shortcut from the Startup group on the start menu. To prevent shutdown on exit, edit the application shortcut and add the option:

-noshutdown

To the end of the shortcut, after the quotes and separated by a space. The minus sign(-) shown above must be included.

Services Screen



This is the main menu. From here you select either Copy or Scan (to-file) operation. The bar at the top indicates the status of the system

Copy Screen



This screen includes the core copying controls for reduction/enlargement, original type, output size, destination printer and print quality.

Destination printers and qualities are configured in the Accxes Copy application. Refer to the Accxes Copy user guide for details.

Documents will begin to scan as automatically when they are inserted. If the document was already in the scanner before entering Copy or Scan mode, press the green (Start) button on the UI to start scanning.

Sure Scan

Sure Scan mode helps achieve the best results first time, minimising waste and paper handling. Sure Scan is enabled by default, but can be disabled by un-checking the Sure Scan box.

Sure Scan allows:

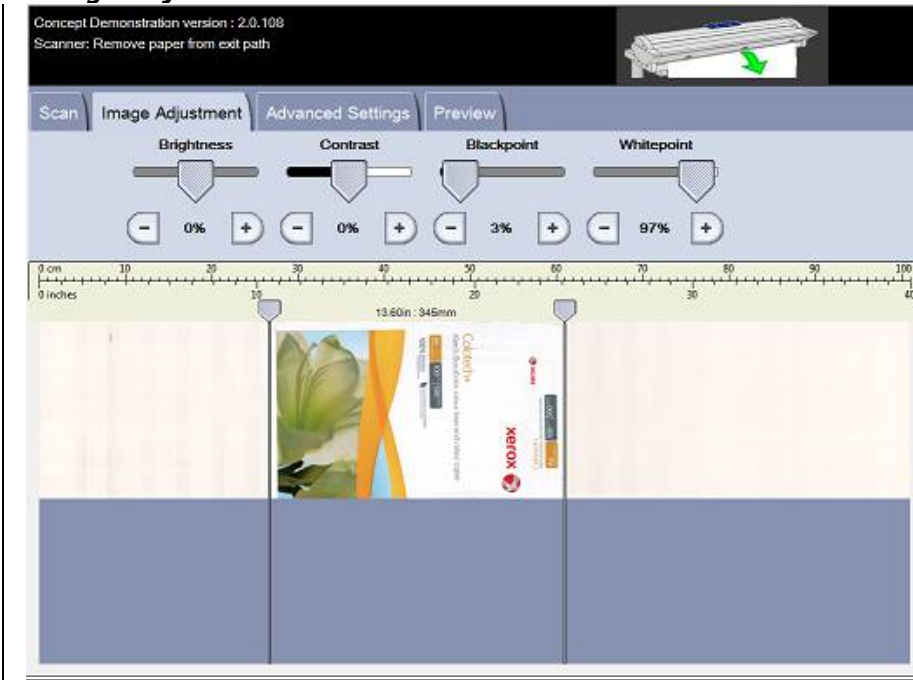
- Image quality adjustments to be made after scanning, with on screen preview.
- Copy settings to be adjusted after scanning.
- Sending a proof copy, possibly at a smaller size, before committing to all required copies.
- Scan the document once and make multiple copies with different settings.
- Scan the document once and save to file and create a copy.

With Sure Scan enabled, documents are scanned and previewed on screen. Settings can be changed as required. To print a copy press the green (Start) button or scan another document. The process of changing settings then pressing the green button can be repeated as many times as are required. To clear the document from memory, press the yellow (Clear) button on the UI, or scan the next document.

With Sure Scan disabled the system behaves like a traditional copier. Copies will be sent to print immediately after scanning.

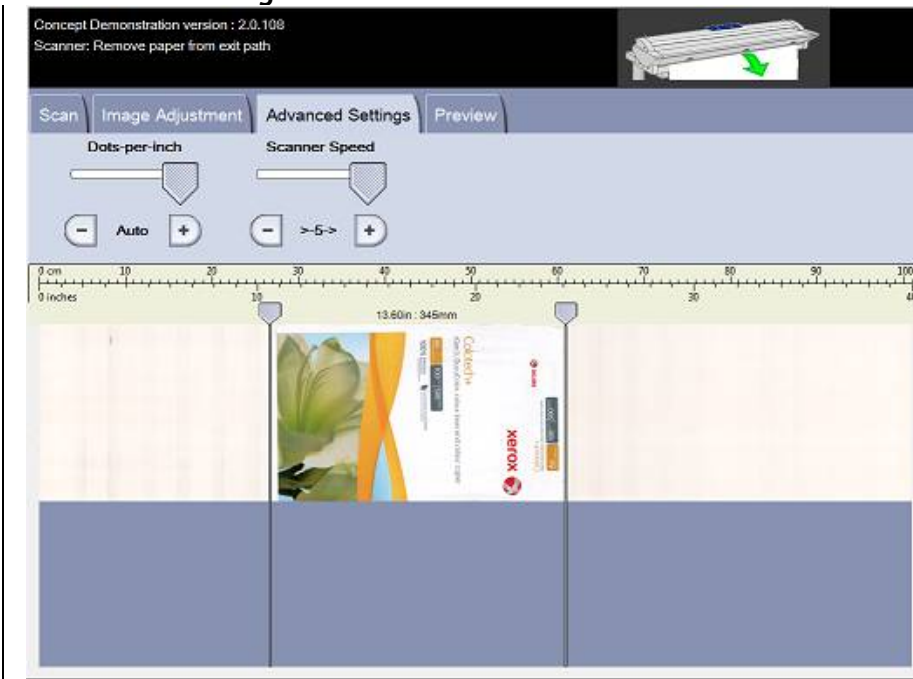
For the best copying results, a colour calibration for each print mode should be performed using Accxes Copy. See the Accxes Copy user guide for details.

Image Adjustment



Brightness, Contrast, Black Point and White Point can be adjusted according to the document type. If Sure Scan is enabled it is possible to preview all adjustments on screen.

Advanced Settings



By default scan resolution is automatically selected for best results with the current copy options. It is also possible to manually select the resolution from 100 to 600dpi in 50 dpi steps.

Scanner speed can be reduced, which is helpful when handling very delicate documents.

Scan Screen



The controls for scan to file are very similar to those for copying. However instead of a destination printer, a destination folder is selected. Files can be named automatically or manually by selecting the preferred option. The format of the scanned file is controlled by the folder definition. These can be changed in the Accxes Copy printer settings window (see page 12).

Touchscreen Controls in Accxes Copy Touch

A number of hard buttons are located below the Xerox touch screen. These buttons are key to operating Accxes Copy Touch. From Accxes Copy Touch v1.10 the Xerox touchscreen is optional. If it is not detected, software buttons will be displayed on screen to provide the same functionality.

Power Saver Button

This button operates at all times.

It causes your PC display to enter low power (standby) mode. The button will light up green while the system is in power saver mode. Press it again to reactive the system.

Start Button (Green)

- a) If a preview is currently displayed (Sure Scan mode) make a copy or save a scan.
- b) If no preview is currently displayed, begin scanning if a document is loaded.

Stop Button (Red)

Stop the current operation.

Clear Button (Yellow)

- a) If a preview is displayed (Sure Scan mode), clear the preview from memory.
- b) Reset all controls to default values.

Services Button

Return to the main Services Screen.

Machine Info Button

Displays version information and allows the current settings to be saved as defaults.

Log In/Out

Exit Accxes Copy Touch application.

Language

Open language selection screen.

Colour Copy from Xerox Wide Format 6705

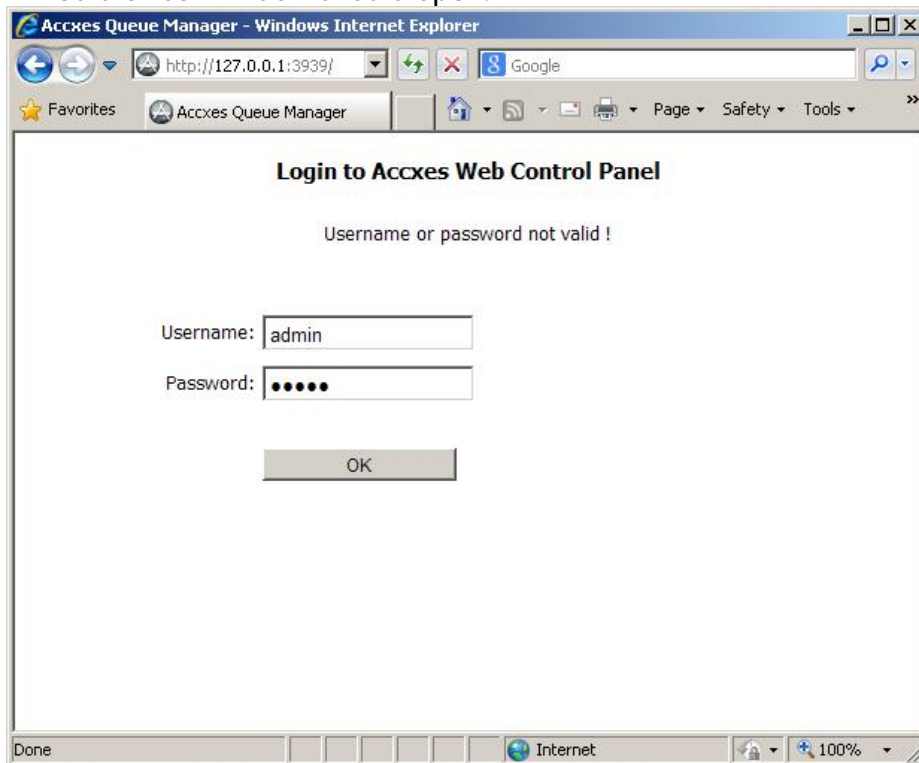
From version 1.9, support is included for making colour copies directly from a Xerox Wide Format 6705. Please follow the following steps to configure and use this functionality.

1) Install Accxes Copy and configure printers.

- a. Follow the instructions in the user guide to install Accxes Copy.
Select a *Workstation* install
- b. When choosing a scanner, select 'Accxes' but leave the *Address* and *Mailbox* options blank.
- c. Add the required printers and print modes but *do not* try to perform colour calibration at this time.

2) Configure Accxes Copy for Xerox 6705 Scanning

- a. Launch "Accxes Copy 6705 Setup" from the Accxes Copy folder on the Start Menu.
A web browser window should open:



b. Log in:

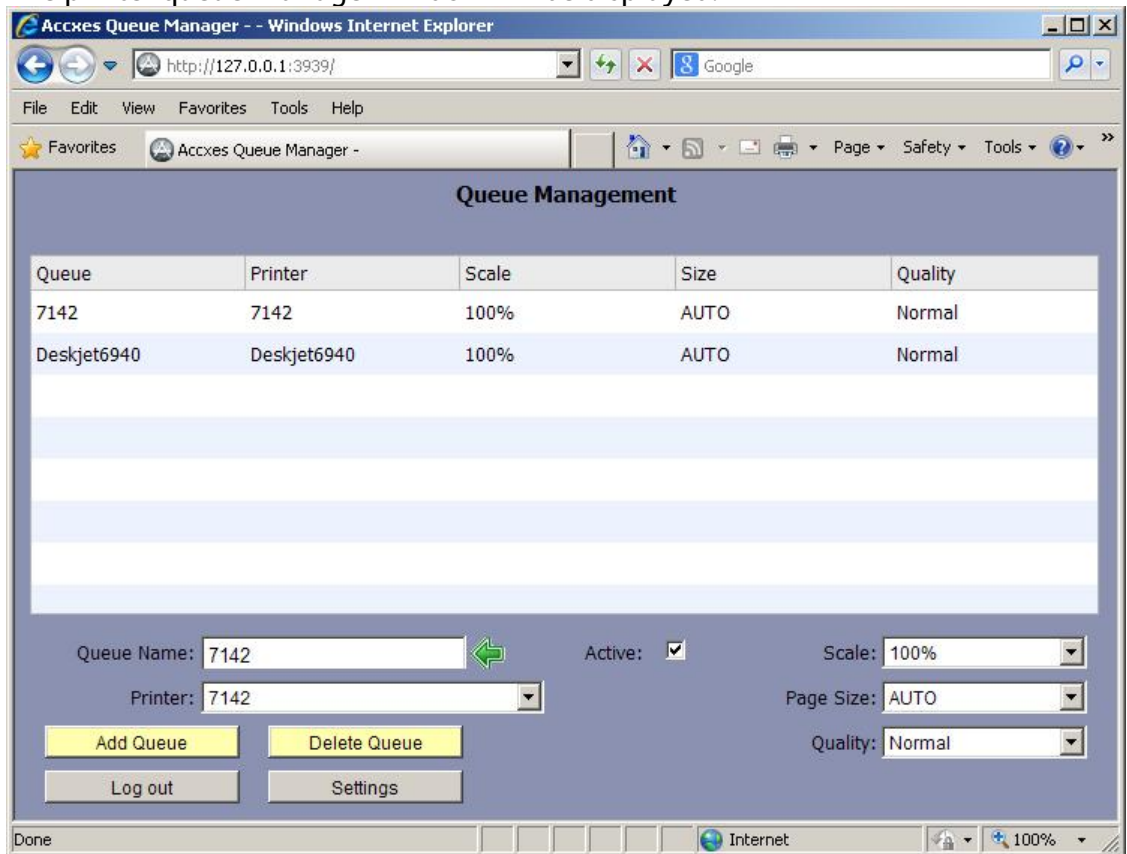
Username: admin

Default Password: admin

Click *OK*

Note: The session will close automatically after 10 minutes inactivity.

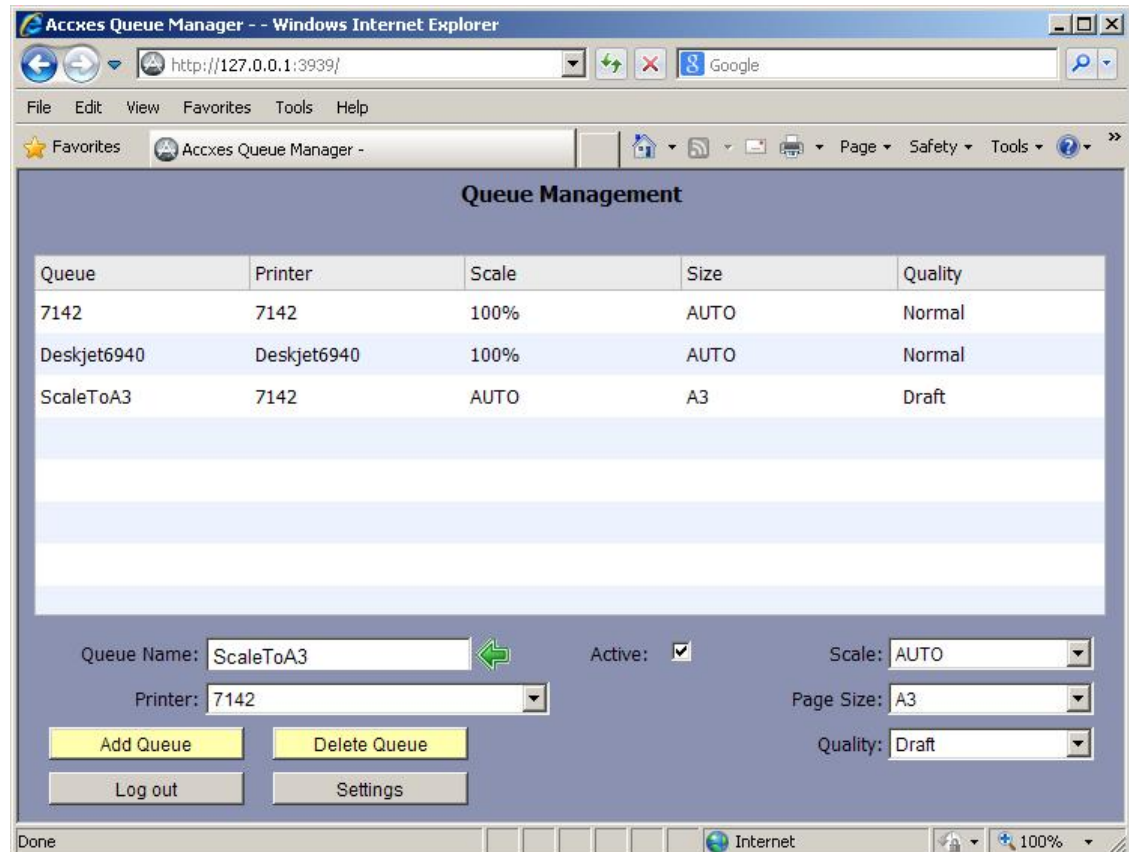
c. The printer queue manager window will be displayed:



- Each queue listed can be set up as a Scan destination on the 6705.
- The first time this is opened, the print queues will automatically be configured from the settings made in Accxes Copy.
- For each printer, check the required print scaling, page size and quality.
- If required, multiple queues can be added to provide the option of different print settings on a single printer.
- The queue names will be entered onto the 6705 on the next step. Queue names should be short, unique and should not contain spaces.

Adding New Queues

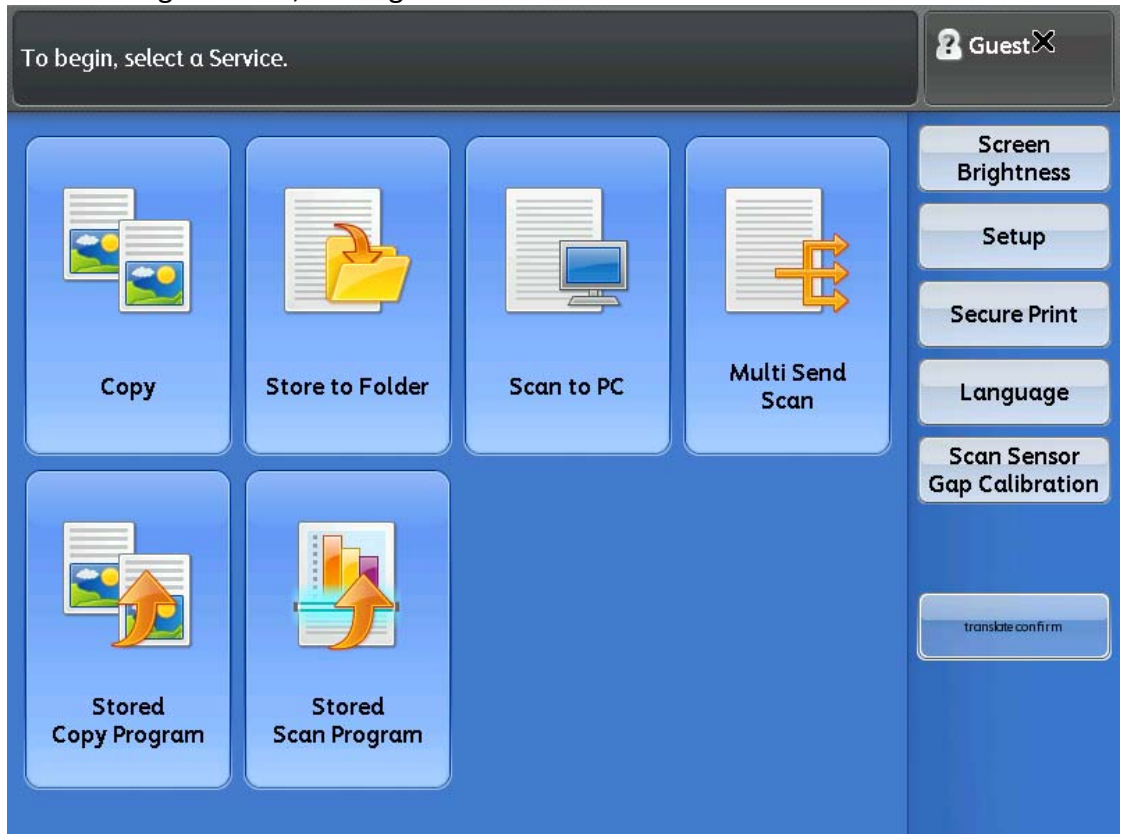
- The example below shows a new queue called **ScaleToA3**. This is added by:
 - Clicking (**Add Queue**)
 - Entering the new queue name
 - Selecting the **Printer** from pull-down list. (Note printers must first be configured in Accxes Copy – see the first step for details).
 - Selecting **Scale** to be automatic (so it will be calculated depending on the scan size)
 - Selecting **Page Size** to be fixed as **A3**
 - Selecting the required **Quality**



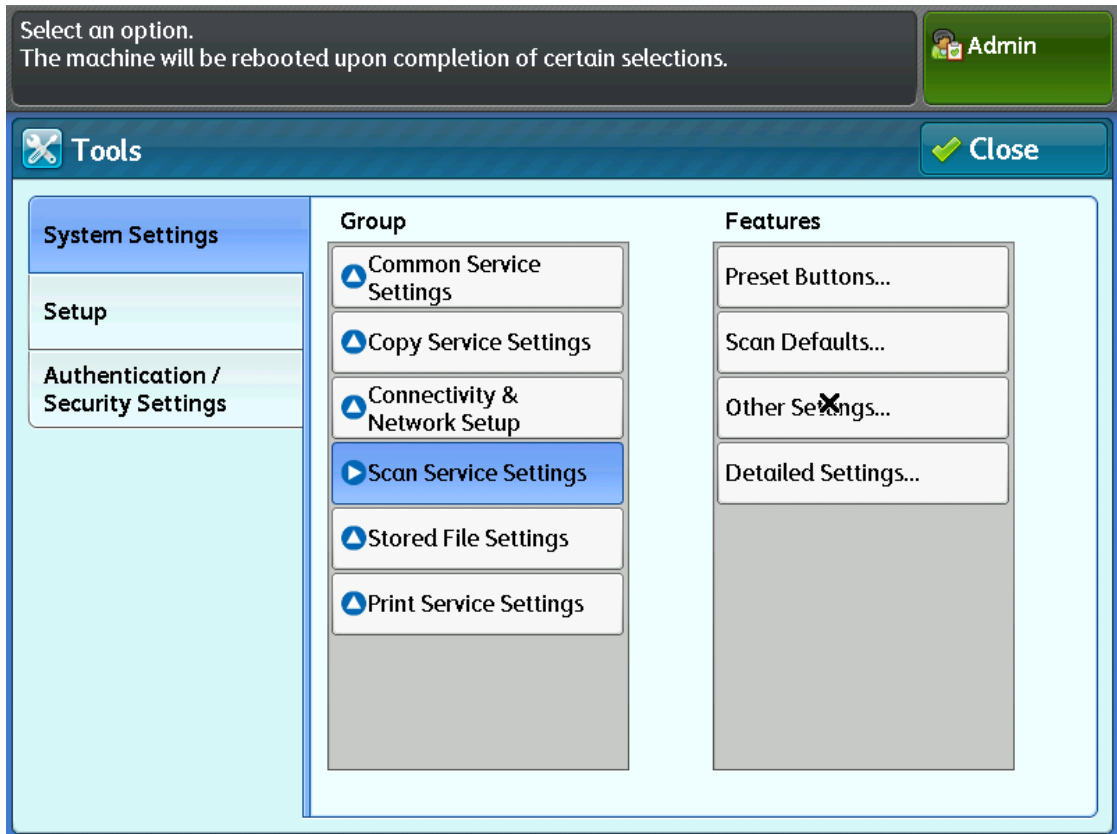
- Note that when a new queue is manually created it is **not** marked 'Active' (indicated by the **STOPPED** message).
- Queues will not be available to process documents unless they are 'Active'
- Simply click the `Active` checkbox to enable a queue.
- Note: A stopped **queue** is shown in red in the list

3) Configure the 6705 For Multi-Send Printing

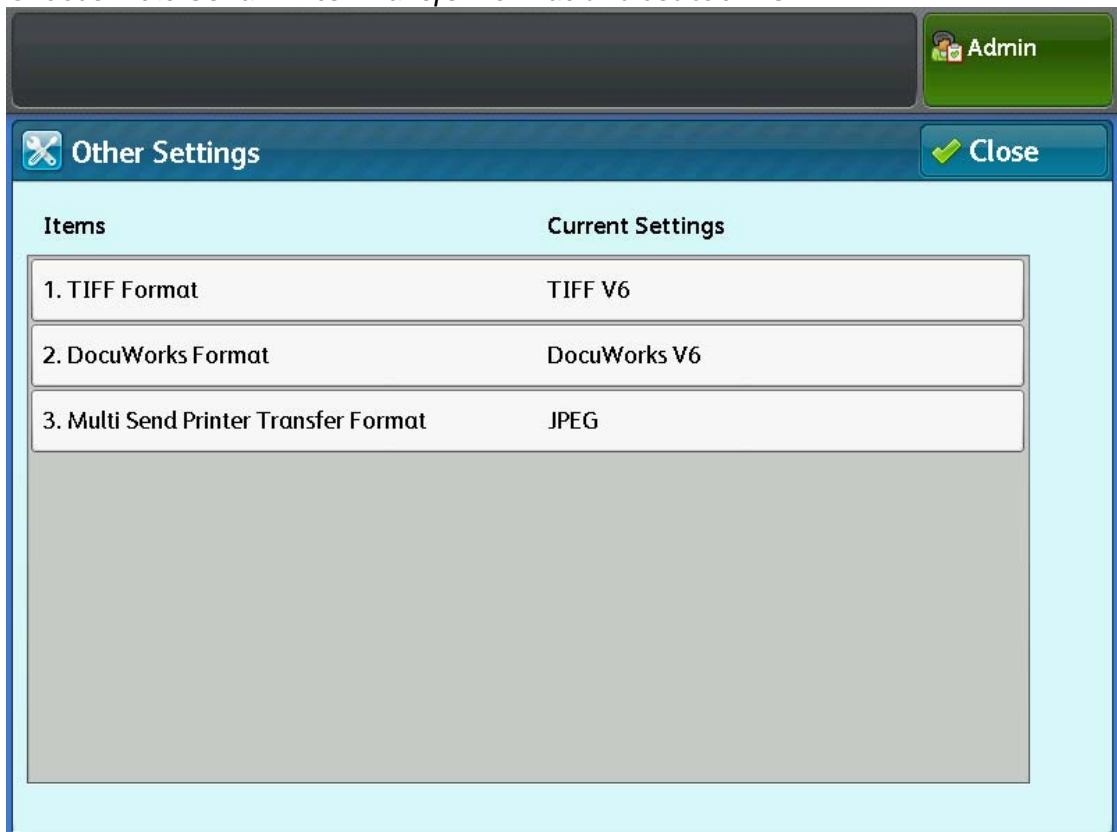
- a. Press the login button, and log in as administrator on the 6705:



- b. Select *Tools* from the main menu, then choose:
System Settings, Scan Service Settings, Other Settings

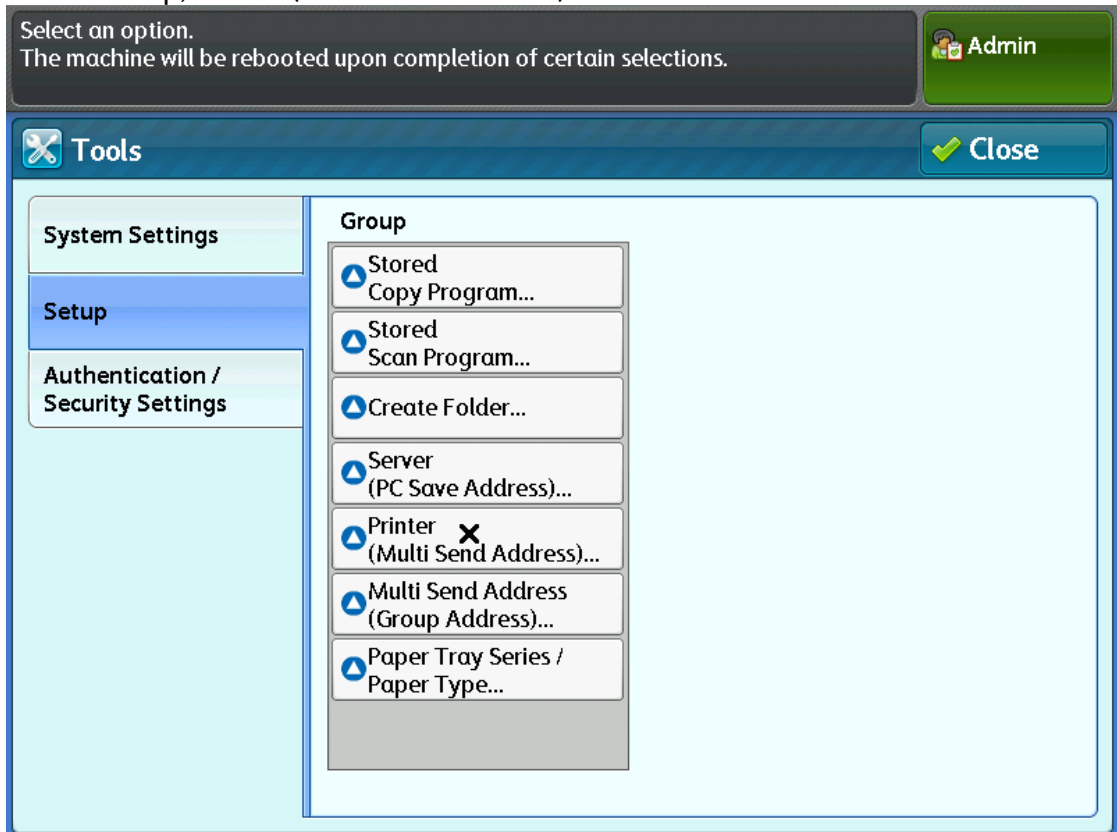


Choose *Multi Send Printer Transfer Format* and set to *JPEG*

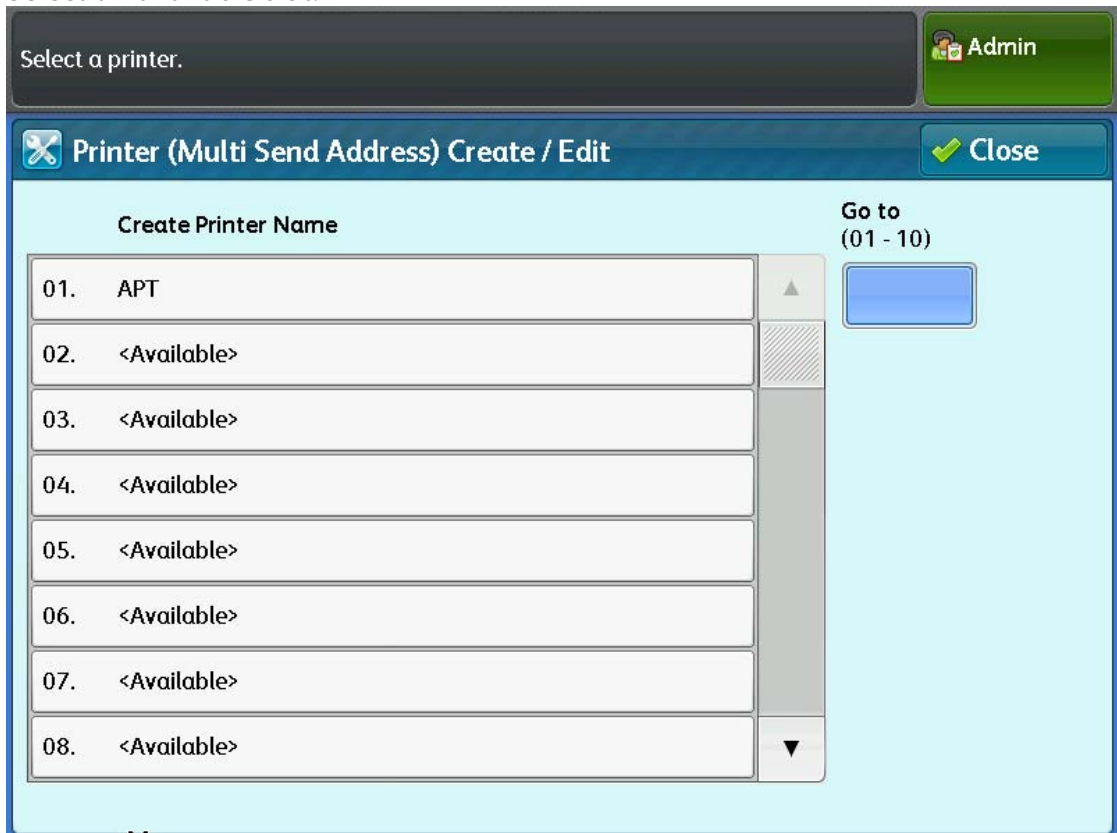


c. Click Close, then choose:

Setup, Printer (Multi Send Address)



Select an available slot:



d. Configure the first Accxes Copy print queue:

| Items | Current Settings |
|-----------------------------|--------------------|
| 1. Name | APT |
| 2. Server Name / IP Address | 13.157.149.110 |
| 3. Logical Printer Name | test |
| 4. Output Size | Same size printing |
| 5. High Speed Multi-print | On |

Where:

- Name: The Name that will appear to users.
- Server Name / IP Address: The IP address of the PC running Accxes Copy
- Logical Printer Name: This **must** match the *Print Queue Name* in Accxes Copy

e. Click close twice, then select *Multi Send Address (Group Address)*:

| Group Name | Go to (01 - 20) |
|-----------------|----------------------|
| 01. APT | <input type="text"/> |
| 02. <Available> | |
| 03. <Available> | |
| 04. <Available> | |
| 05. <Available> | |
| 06. <Available> | |
| 07. <Available> | |
| 08. <Available> | |

Select and Available slot.

f. The following will be displayed:

| Items | Current Settings |
|---------------------|------------------|
| 1. Name | APT |
| 2. PC Save Address1 | (Not Set) |
| 3. PC Save Address2 | (Not Set) |
| 4. Printer1 | APT |
| 5. Printer2 | (Not Set) |
| 6. Printer3 | (Not Set) |
| 7. Printer4 | (Not Set) |
| 8. Printer5 | (Not Set) |

Where:

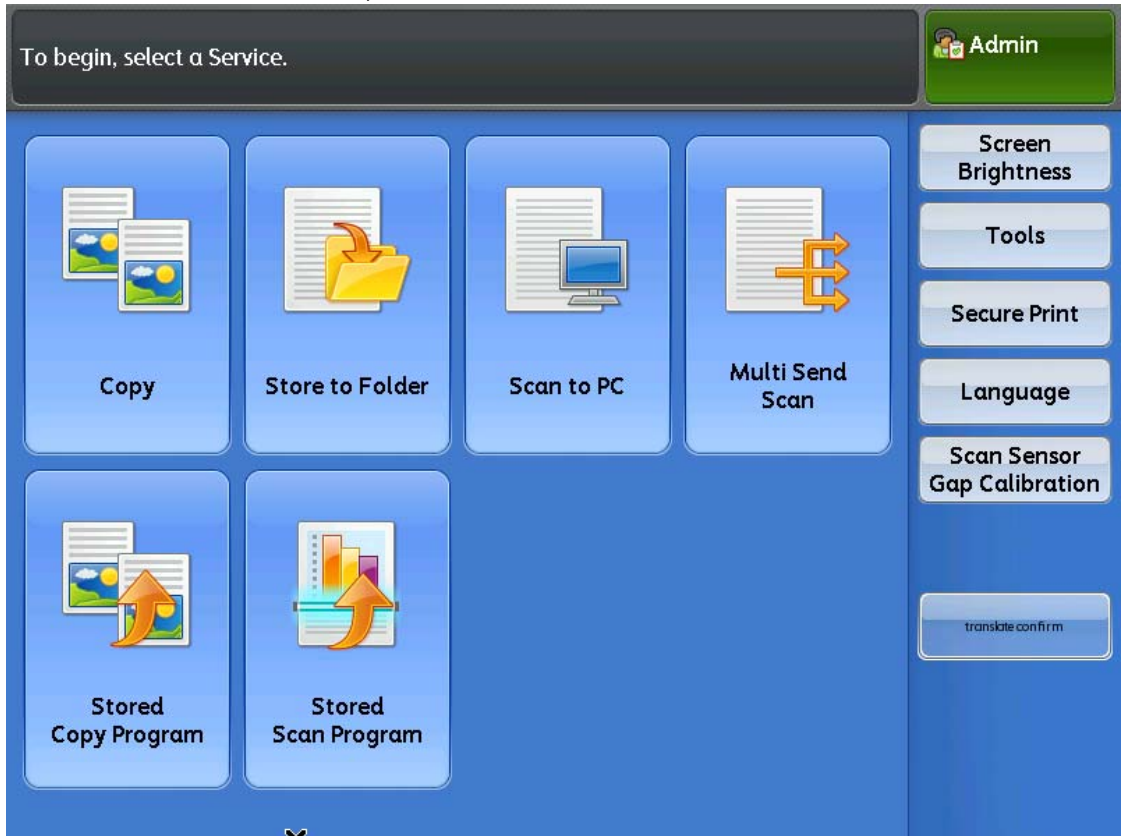
Name: The Name that will appear to users
(The same name as previous step).

Printer1: The name given to the printer in the previous step.

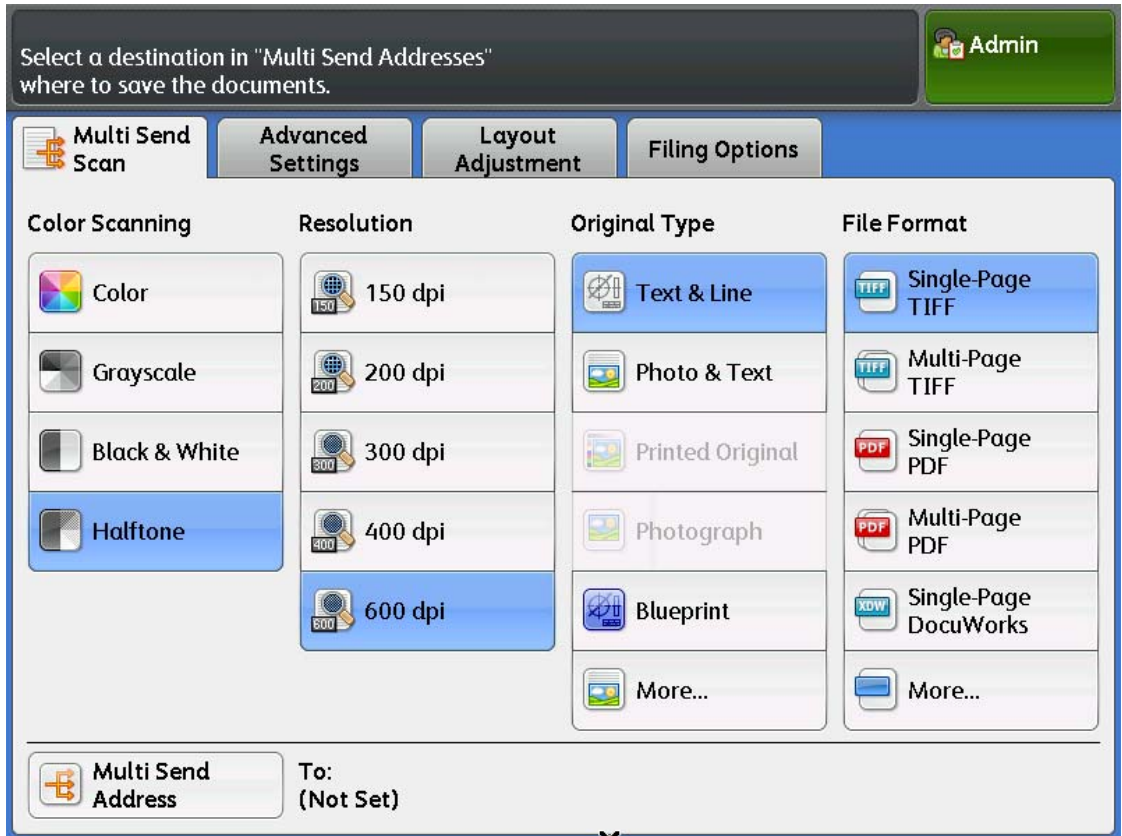
g. Repeat steps(a) to (f) for each additional print queue that will be used

4) Making a Copy

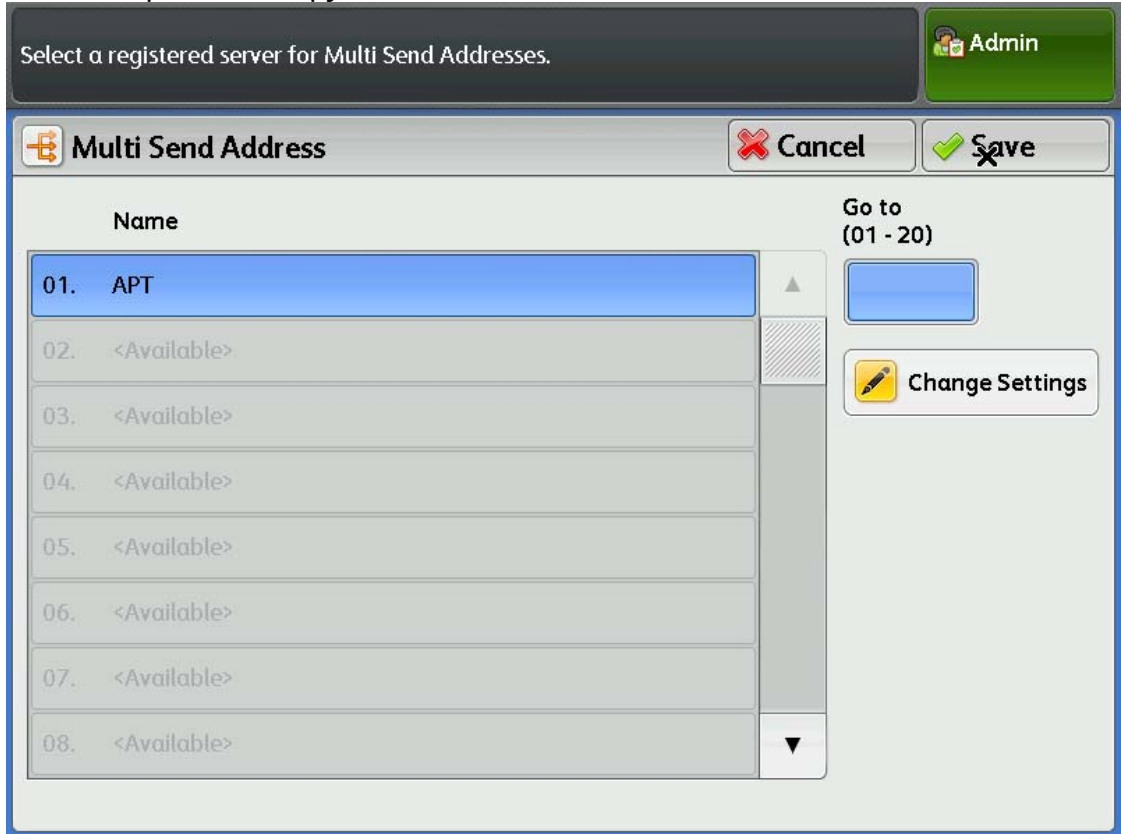
- a. From the 6705 main menu, select Multi Send Scan



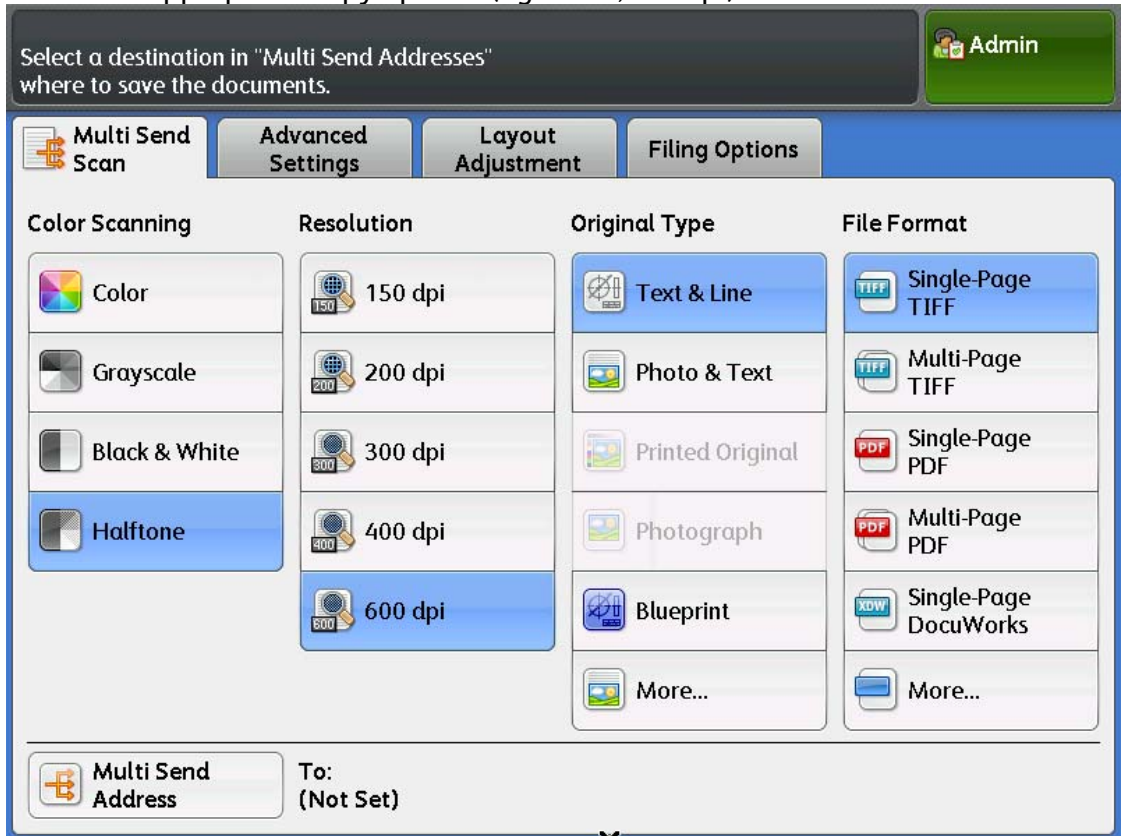
- b. Select Multi Send Address:



c. Select the printer to copy to:



d. Select the appropriate copy options (eg. Color, 300dpi):



- e. Scan a document, the copy will start printing around 60 seconds later. (Note the exact delay will depend on many factors, including the size of the document and performance of the PC running the Accxes Copy software.)

Known Issues

- 1) When performing an upgrade, Windows 7 or 8 may display a message indicating the installation did not work correctly. This message can be safely ignored and does not affect operation of the software.
- 2) When upgrading an error may appear 'Unable to start service'. Click ignore, or reboot before installing this new version. This has been fixed for any future upgrades.

Changes In This Release (v1.10.313)

- Fix scanner UI not showing in local language.
- 'Error starting service' message when updating is fixed for future updates. However it may happen when first updating to this version – if so click ignore, and reboot after install.
- Fix rewind at end of scan issues and repeated scans with 7742 scanner.
- Fix Accxes Copy Touch with 7740 scanner missing Auto resolution option when used with Xerox Touchscreen UI.

Changes In Release v1.10.311

- Fix Xerox 6705 scanning support not installed as expected.
- Improve print/copy quality (increasing default internal processing resolution).
- Fix Accxes Copy Touch with 7742 scanner missing Auto resolution option when used with Xerox Touchscreen UI.

Changes In Release v1.10.307

- Updated Xerox 7742 scanner support.
- Use Accxes Copy Touch interface without Xerox touch screen. If a Xerox touch screen is detected, UI functions as previously and hard buttons are used. If Xerox screen is not detected when launched, soft buttons are displayed to the right of the UI, replacing the functionality of the hard buttons.
- Long document support in Copy Touch (tested to 30m) – scan to file of long documents must be in PDF or PDF/A format. Long documents can result in huge amounts of scanned data. Lower resolutions (≤ 300 dpi) recommended to ensure PDF file sizes are usable. Local hard disk space must be available to support processing the size of documents scanned: 9.6GB per meter @ 1200dpi colour, 2.4GB per meter @ 600dpi colour, 600MB per meter @ 300dpi. This space is required for processing, final PDF sizes will be significantly smaller.
- Choice of both PDF and PDF/A formats for scan to file in Copy Touch
- Delay between scan finishing and file being available significantly reduced in Copy Touch.
- When upgrading a pre v1.10 installation, scan-to-file file types were lost, resulting in TIF files with blank extension. This is resolved with this release for upgrades from $< v1.10$. On systems already showing this behaviour, the file types must be manually restored in the setup utility.
- In v1.10.304 and 1.10.305 copy mode may fail to scale correctly in certain circumstances. This is resolved in this release.
- In certain environments special user profile configurations could cause scanning and printing to fail after the first document, (with a side effects of missing document printing later). This is resolved in this release.
- Fixes printing from Copy Touch to new Xerox 7142 driver.
- Resolve copy count problems for some users.
- Fix output size selection (and scale to fit) in Copy mode
- Copy Touch title bar on non-touchscreen systems now reads Xerox FreeFlow Accxes Copy Touch.
- Fix issue on some systems where scanning and printing did not work from Copy Touch.

Changes In v1.9.293

- Fix issue showing an error message when making copying/saving scans from Accxes Copy Touch on some systems
- Improved normalisation for 7740 scanner (fixes coloured lines issue exhibited on some units)
- Support for Colortrac SC42 scanner
- Updated Xerox 7142 printer drivers
- Windows 8/8.1 support
- Xerox 6705 colour copy support

Changes In v1.8.274

- Fix issue that could cause scanner normalisation to fail
- Fix issue that could cause UI communication to fail
- Add drag and drop support to Accxes Copy for:
 - Inserting documents (eg. Drag from explorer)
 - Set build
 - Set ordering
- Add resizable thumbnail bars to Accxes Copy to allow larger sets of document to be easily created.
- Add Ctrl-O shortcut key to open files
- Add Ctrl-A shortcut key to add selected files to the set

Changes In v1.8.267

- Fix setup bug that caused Windows XP systems to start Repair mode.
- Updated HPGL processing support
- Fix occasional failure of 7740 scans to display in Accxes Copy UI
- Scanner firmware upgrade fixed on some non-English Windows versions
- Prevent potential failure to detect scanner before calibration
- Fix rare issue of scan to PDF in Accxes Copy Touch failing
- Accxes Copy Touch now correctly uses the Quality setting that was saved as default.
- Improved Line/Photo mode black and white scanning for better reproduction of greyscales, and corrected mode in Accxes Copy Touch to save 1bit not 8bit files.
- Accxes Copy Tocuh 'More' button behaviour improved
- Minimise button now works in Workstation mode on Xerox Touchscreen UI.
- Correct issue that could cause scans to stop part way through in certain cases.

Changes In v1.8.260

- Fix password issue that caused scanning with recent Accxes Controller releases to fail.
- Improvements to GDI custom size (Syncro Cut) support.
- Fix issue that caused Auto-rotate to fail for some Windows printers.
- Improved GDI printing quality where possible, and reduce failure risk large documents on some systems by selecting processing resolution according to available memory. For optimum quality a 64bit Windows system should be used.
- Prevent systems going into power save (suspend or sleep) automatically while Accxes Copy Touch is running.
- Improve scan to PDF with Accxes Copy Touch. New PDF creation is faster and fixes issue of blank PDF files.
- Fixed issue which could cause Accxes Copy Touch systems to stop printing or saving scans until the system was restarted.
- Fix incorrect display after minimising Accxes Copy Touch
- Fix deleting current scan when minimising Accxes Copy Touch
- Fix issue where long (>A1) scans could stop early at high resolutions.
- Change default blackpoint in B/W Lines+Text mode to 55 %
- Prevent double preview redrawing when changing settings.
- Fix scan length issue when changing from colour to greyscale mode.
- Fix timeout to main menu occurring at end of long scan.

Changes In v1.8.245

- Updated part numbers in this document to reflect the PC and OS kit availability.
- Updated this document to reflect new UI options.
- Use updated normalisation settings to support Xerox 7740 scanners with new illumination source used from September 2011 onwards. (See above)
- Spanish and Polish translations included for Accxes Copy Touch.
- Automatic scan file names now based on current second, not just minutes.
- Fixed a bug which prevented scan documents saving correctly on some systems.
- Calibrate and Stitch options now work correctly from Accxes Copy Touch setup screens.
- Accxes Copy Touch keyboard has improved appearance.
- Tag data in scanned files now reflects the filename used.
- Fixed a bug that prevent long documents working correctly on some systems.
- Added Copier, Workstation and Accxes Copy Only modes to setup on Windows 7. (See above for full details).
- New Copier mode creates a dedicated user, which automatically logs in at boot and starts the Accxes Copy Touch UI. With a keyboard connected is possible to log out this user by pressing Log In/Out on the touchscreen, then W on the keyboard.
- New Workstation mode prevents Accxes Copy Touch loading automatically loading, does not hide the mouse cursor and allows the window to be minimised and moved.
- New Accxes Copy only mode for use where Accxes Copy Touch is not required.
- A touchscreen keyboard is shown when entering setup in Copier Mode (Pressing Log In/Out, then Services). The system can now be configured without requiring a keyboard and mouse connected.
- Start menu item layout improved.
- Shortcut to user guide on start menu now works as expected.
- Start menu options to switch between Workstation and Copier modes.
- New calibration button from printer calibration screen allows colour calibration in Copier mode.
- New support button to enter pin when a LogMeIn Xerox remote support session is required.
- Touchscreen UI will not switch off during software upgrades in future (though it may when v1.8 is first installed).
- New sound scheme for improved feedback using Accxes Copy Touch.
- Fixed an issued which caused a DLL error if Accxes Copy Touch was run before a scanner had been connected to the system.
- UI Calibration wizard is no longer hidden by Accxes Copy Touch UI at boot.
- Drag and drop of license file during setup now works as expected.
- Update 7740 scanner firmware button only shows when an update is available.
- 7740 scanner detected if connected while scanner properties window is displayed.
- If Accxes Control is installed and configured for automatic mode, it will be launched automatically in the background when Accxes Copy Touch is installed in Copier mode. This allows printing support to function seamlessly in Copier mode.
NOTE: This feature requires Accxes Control v1.5.116 to work correctly.
- Fixed an issue which prevented Multi-user licensing for Accxes Copy and Accxes Indexer working on some systems. As a result the multi-user licensing in v1.8 is not backwards compatible, so all Accxes Indexer and Accxes Copy systems should be upgraded.

Changes In v1.7.202

- Updated part numbers in documentation to reflect the new UI Install Kit configuration.
- Fixed a bug that prevented the Power Saver button on the UI working correctly.
- Added support for touchscreen emulator for support purposes. The emulator itself is available separately to support personnel.
- Fixed a bug that caused unexpected behaviour if Language then cancel was pressed from the Copy/Scan screens.
- Fixed a bug that caused unexpected behaviour if buttons were pressed while a message box was show.
- Green/Red buttons now also function as OK/Cancel in message boxes.
- Pressing Log In/Out, then Services now launches the setup program to configure printers and scan folders. A keyboard and mouse should be connected to do this.
- Shortcut keys from Log In/Out message to help with support (keyboard required). While the Do You Want To Exit message is shown press:
 - **w** To exit to Windows.
 - **s** To enter setup
 - **r** To reboot

Changes In v1.7.201

- Xerox FreeFlow Accxes Copy Touch included (Windows 7 only)
- Improved Automatic Deskew for Calibration (increased calibration accuracy)
- Improved support for international versions of Windows
- Touchscreen drivers included in package when installing on Windows 7
- New scan folder configuration for Accxes Copy Touch.

Changes In v1.6

- Xerox Touch Screen User Interface support
- Support hard buttons on Xerox Touch Screen User Interface
- On the fly image adjustment after scanning with Xerox 7740 scanner
- Touch screen friendly controls with Xerox 7740 scanner
- Scanner user interface in local languages
- Beta support for Russian language
- Improved compression for smaller files sizes when scanning to file.
- Improved normalisation process
- Accxes Copy saves scanner settings on first attempt
- Accxes Copy automatically creates a default print mode for Windows printers
- Accxes Copy with 7740 scanner will delete files in Auto Copy mode for improved productivity
- No prompts to start the licensing service if multi-user licenses have expired
- Fixed issue with greyscale scans and Accxes Copy.
- If Accxes Copy is closed unexpectedly, files scanned on a 7740 are still available when it is restarted.