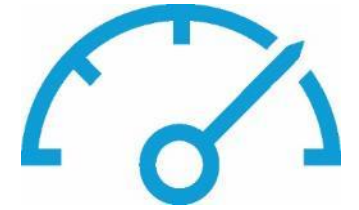


An abstract graphic featuring a large, thick blue curved line that starts from the left, arches over the top, and then curves down towards the right. Below this, there is a grey rectangular area with a blue circular shape inside it. The text is overlaid on the grey area.

FreeFlow Core Accelerator for PrimeLink and Versant

Accelerate your engine's productivity.

FreeFlow Core Accelerator



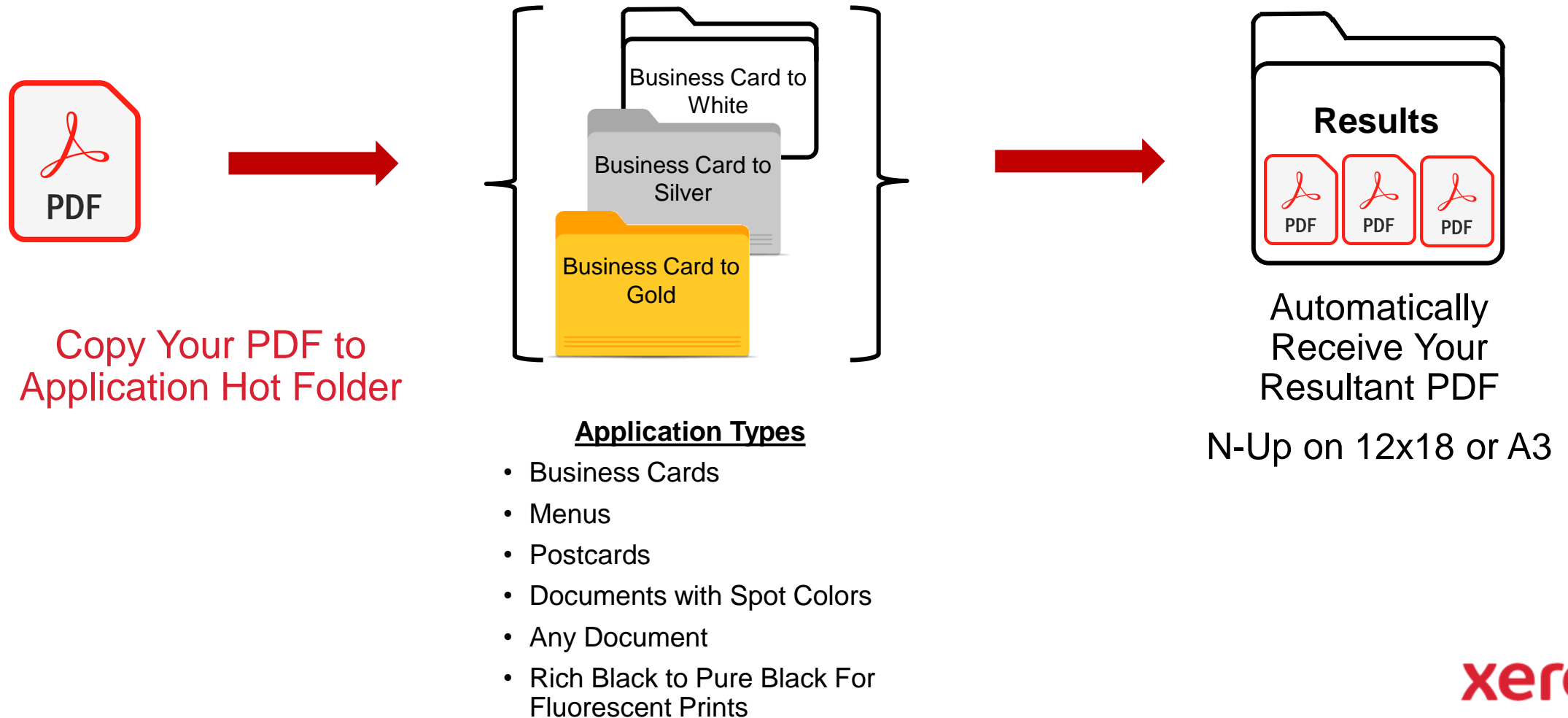
Color Your Business

- Revolutionary new technology brings exciting color options beyond CMYK; And now a SIMPLE way to take advantage.
- Think of the possibilities! Delight your customers by taking their existing applications and adding a WOW-factor.
- FreeFlow Core enables you to enhance existing files, without redesigning, to print with Gold / Silver / White / Fluorescents.

What Does this Accelerator Do?

- Pre-built workflows automatically maps content within existing PDF files to a new color.
- Drag and drop simplicity - No designer needed!

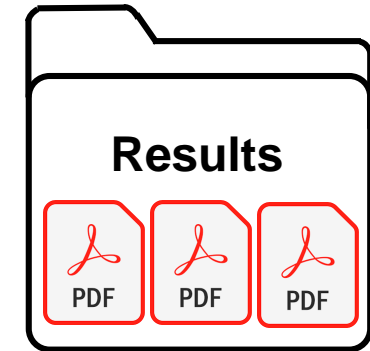
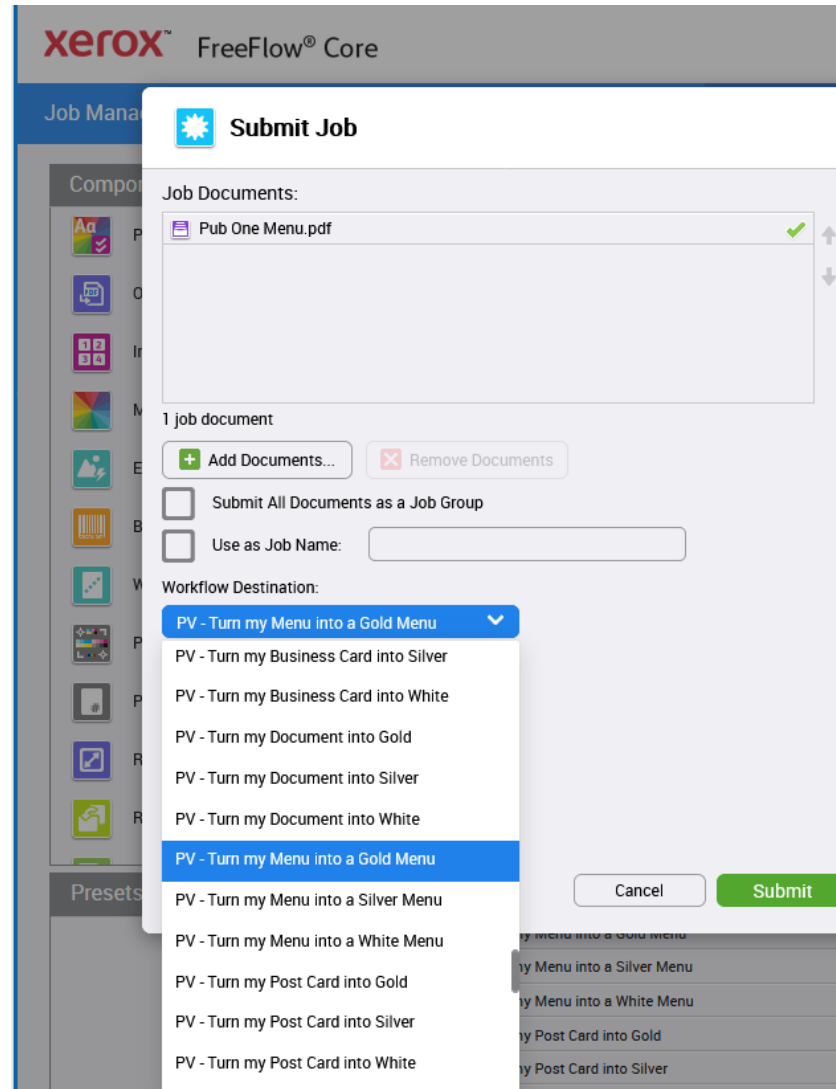
1 Step Embellishment using Hot Folders



1 Step Embellishment using Browser



- Upload Your PDF
- Pick Desired workflow
- Select Submit



Automatically Receives
Your Resultant PDF

N-Up on
12x18 or SRA3

Accelerator for PrimeLink / Versant Usage Guide

I want to...

Make my Business Card Shine with GOLD



Copy file into Hot Folder
“Business Card to Gold”



FreeFlow Core will
automatically map
content to Gold and
impose N-up on Press
Sheet.



I want to...

Make my Business Card Shine with Silver



Copy file into Hot Folder
“Business Card to Silver”



FreeFlow Core will
automatically map
content to Silver and
impose N-up on Press
Sheet.



I want to...

Make my Business Card Pop with White when printed on dark media



Original
1-up Business Card

Copy file into Hot Folder
“Business Card to White”



FreeFlow Core will
automatically map
content to White and
impose N-up on Press
Sheet.



Prints in White



Displays in
Cyan for
viewing with
Acrobat

xerox™

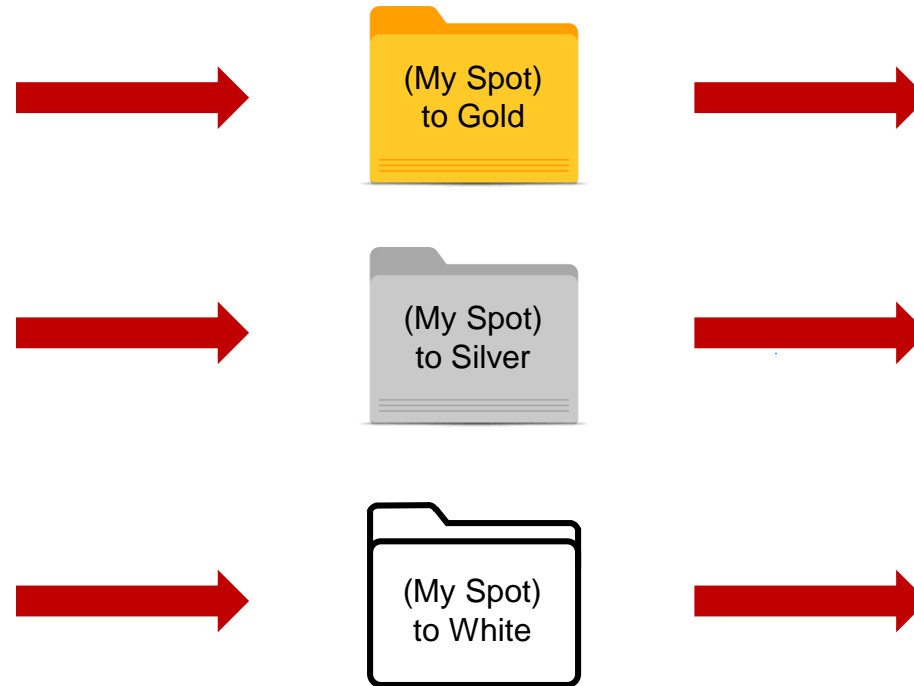
I want to...

Enhance my Poster by Enhancing my SPOT colors



Original 1-up Poster with spot color
"Harvest Green" text.
Set SPOT color name in Workflow.

Copy file into Hot Folder



FreeFlow Core automatically maps
all Harvest Green SPOT Color to
Gold, Silver, or White, and imposes
on press sheet.



(Note white text shows up onscreen
as cyan for viewing purposes)

xerox™

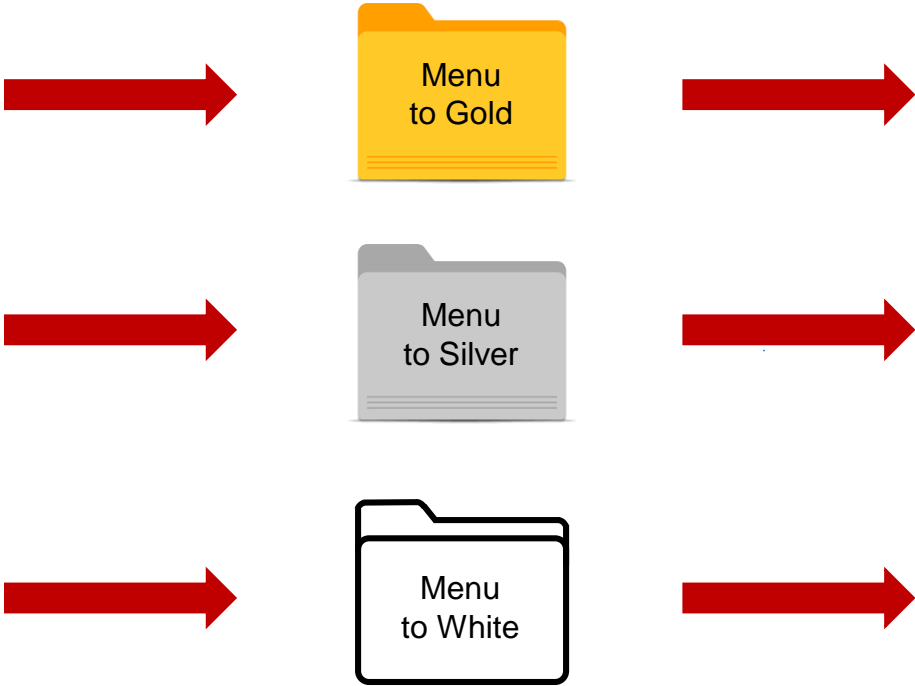
I want to...

Improve the look of my Menu

HOPS	WHEATS & BE
THREES BREWING CONFIRMATION BIAS AMERICAN PALE ALE • NEW YORK • 5.4% 6oz. FLIGHT-\$3 12oz.-\$6 16oz.-\$7 22oz.-\$10	BLUE MOON BELGIAN WHITE WITBIER • COLORADO • 5.4% 6oz. FLIGHT-\$2 12oz.-\$4 16oz.-\$5
DOGFISH HEAD 90 MINUTE IPA DOUBLE IPA • DELAWARE • 9% 6oz. FLIGHT-\$2.5 12oz.-\$5 16oz.-\$7 22oz.-\$9	GREAT LAKES CLOUD CUTTER PALE WHEAT ALE • OHIO • 5.10% 6oz. FLIGHT-\$2 12oz.-\$4 16oz.-\$5
CARTON BOAT BEER AMERICAN PALE ALE • NEW JERSEY • 4.2% 6oz. FLIGHT-\$2 12oz.-\$4 16oz.-\$6 22oz.-\$9	THREES BREWING WANDERING BIRD SAISON • NEW YORK • 6.5% 6oz. FLIGHT-\$4.5 12oz.-\$9 16oz.-\$10
BARRIER BREWING MONEY AMERICAN IPA • CALIFORNIA • 7.3% 6oz. FLIGHT-\$2.5 12oz.-\$5 16oz.-\$7 22oz.-\$10	
FLYING BISON JUICE CABOOSE AMERICAN IPA • NEW YORK • 7.5% 6oz. FLIGHT-\$2 12oz.-\$4 16oz.-\$5 22oz.-\$7	
STOUTS & PORTERS	WHEATS & BE
GOOSE ISLAND BRASSERIE NOIR AMERICAN IMPERIAL STOUT • ILLINOIS • 11.3% 6oz. FLIGHT-\$8 12oz.-\$16 16oz.-\$21 22oz.-\$29	BLUE MOON BELGIAN WHITE WITBIER • COLORADO • 5.4% 6oz. FLIGHT-\$2 12oz.-\$4 16oz.-\$5
RARE FORM KARASS AMERICAN PORTER • NEW YORK • 4.5% 6oz. FLIGHT-\$2 12oz.-\$4 16oz.-\$5 22oz.-\$6	GREAT LAKES CLOUD CUTTER PALE WHEAT ALE • OHIO • 5.10% 6oz. FLIGHT-\$2 12oz.-\$4 16oz.-\$5
FOUNDERS KBS	THREES BREWING WANDERING BIRD SAISON • NEW YORK • 6.5% 6oz. FLIGHT-\$4.5 12oz.-\$9 16oz.-\$10
	AVERY LILIKO'I KEPOLO BELGIAN WIT • COLORADO • 5.6% 6oz. FLIGHT-\$2.5 12oz.-\$5 16oz.-\$7 22oz.-\$9
	CASCADIA AMERICAN PALE ALE • NEW YORK • 4.2% 6oz. FLIGHT-\$2 12oz.-\$4 16oz.-\$6 22oz.-\$9
	FIRESTON

Original 1-up Menu

Copy file into Hot Folder



FreeFlow Core automatically maps Menu content to Gold, Silver, or White, and imposes on press sheet.

HOPS	WHEATS & BE
THREES BREWING CONFIRMATION BIAS AMERICAN PALE ALE • NEW YORK • 5.4% 6oz. FLIGHT-\$3 12oz.-\$6 16oz.-\$7 22oz.-\$10	BLUE MOON BELGIAN WHITE WITBIER • COLORADO • 5.4% 6oz. FLIGHT-\$2 12oz.-\$4 16oz.-\$5
DOGFISH HEAD 90 MINUTE IPA DOUBLE IPA • DELAWARE • 9% 6oz. FLIGHT-\$2.5 12oz.-\$5 16oz.-\$7 22oz.-\$9	GREAT LAKES CLOUD CUTTER PALE WHEAT ALE • OHIO • 5.10% 6oz. FLIGHT-\$2 12oz.-\$4 16oz.-\$5
CARTON BOAT BEER AMERICAN PALE ALE • NEW JERSEY • 4.2% 6oz. FLIGHT-\$2 12oz.-\$4 16oz.-\$6 22oz.-\$9	THREES BREWING WANDERING BIRD SAISON • NEW YORK • 6.5% 6oz. FLIGHT-\$4.5 12oz.-\$9 16oz.-\$10
HOPS	WHEATS & BE
THREES BREWING CONFIRMATION BIAS AMERICAN PALE ALE • NEW YORK • 5.4% 6oz. FLIGHT-\$3 12oz.-\$6 16oz.-\$7 22oz.-\$10	BLUE MOON BELGIAN WHITE WITBIER • COLORADO • 5.4% 6oz. FLIGHT-\$2 12oz.-\$4 16oz.-\$5
DOGFISH HEAD 90 MINUTE IPA DOUBLE IPA • DELAWARE • 9% 6oz. FLIGHT-\$2.5 12oz.-\$5 16oz.-\$7 22oz.-\$9	GREAT LAKES CLOUD CUTTER PALE WHEAT ALE • OHIO • 5.10% 6oz. FLIGHT-\$2 12oz.-\$4 16oz.-\$5
CARTON BOAT BEER AMERICAN PALE ALE • NEW JERSEY • 4.2% 6oz. FLIGHT-\$2 12oz.-\$4 16oz.-\$6 22oz.-\$9	THREES BREWING WANDERING BIRD SAISON • NEW YORK • 6.5% 6oz. FLIGHT-\$4.5 12oz.-\$9 16oz.-\$10
HOPS	WHEATS & BE
THREES BREWING CONFIRMATION BIAS AMERICAN PALE ALE • NEW YORK • 5.4% 6oz. FLIGHT-\$3 12oz.-\$6 16oz.-\$7 22oz.-\$10	BLUE MOON BELGIAN WHITE WITBIER • COLORADO • 5.4% 6oz. FLIGHT-\$2 12oz.-\$4 16oz.-\$5
DOGFISH HEAD 90 MINUTE IPA DOUBLE IPA • DELAWARE • 9% 6oz. FLIGHT-\$2.5 12oz.-\$5 16oz.-\$7 22oz.-\$9	GREAT LAKES CLOUD CUTTER PALE WHEAT ALE • OHIO • 5.10% 6oz. FLIGHT-\$2 12oz.-\$4 16oz.-\$5
CARTON BOAT BEER AMERICAN PALE ALE • NEW JERSEY • 4.2% 6oz. FLIGHT-\$2 12oz.-\$4 16oz.-\$6 22oz.-\$9	THREES BREWING WANDERING BIRD SAISON • NEW YORK • 6.5% 6oz. FLIGHT-\$4.5 12oz.-\$9 16oz.-\$10
BARRIER BREWING MONEY AMERICAN IPA • CALIFORNIA • 7.3% 6oz. FLIGHT-\$2.5 12oz.-\$5 16oz.-\$7 22oz.-\$10	AVERY LILIKO'I KEPOLO BELGIAN WIT • COLORADO • 5.6% 6oz. FLIGHT-\$2.5 12oz.-\$5 16oz.-\$7 22oz.-\$9

(Note white text shows up onscreen as cyan for viewing purposes)



I want to....

Improve the look of my Post Cards


Color, like light,
can evoke a feeling—create a sensory reaction.
The right pairing of complementary colors
lends harmony to a photograph, tying two objects together.
Composing a photograph of objects with clashing colors
can jar your senses, but also draw your attention.
Color affects mood—happy yellows,
blood-stirring reds, nurturing greens, regal violets.
Some call it the color wheel. I call it the wheel of feelings.
Experience color.


"The devil is in the details"
is so true in the art of photography.
Photographers have a devil of a time
getting the photograph just right.
That's why we take so many shots of the same image.
We are always moving, looking for the best angle,
the perfect light to accentuate or silhouette,
the right colors in the right amounts to recreate the feeling,
to stop time and capture the detail,
to do as we do capture the truth.
See the moment.


Light has temperature. It warms. It cools.
It makes you feel with your eyes.
The reds in late afternoon light can warm you,
while the cool blue of icy water
can raise goosebumps. Light can draw your attention,
like a magnet pulling your eye to a certain spot
in a photograph. Light plays tricks, masking or
defining details. Light is harsh. Light is soft.
Light is everything to the art of photography.
Feel the light.


Texture gives photos dimension.
It turns the reality of a flat, two-dimensional image
into the illusion of a three-dimensional
object you can actually touch.
Achieved through lighting, color and contrast,
catching the right combination can give you a photograph
of leaves you want to plunge your hands into,
or a hand you know would feel like sandpaper.
Take a visual touch.

Copy file into Hot Folder



Four Original Post Cards

FreeFlow Core automatically maps
Post Card contents to Gold, Silver, or
White, and imposes on press sheet.


Light has temperature. It warms. It cools.
It makes you feel with your eyes.
The reds in late afternoon light can warm you,
while the cool blue of icy water
can raise goosebumps. Light can draw your attention,
like a magnet pulling your eye to a certain spot
in a photograph. Light plays tricks, masking or
defining details. Light is harsh. Light is soft.
Light is everything to the art of photography.
Feel the light.


Texture gives photos dimension.
It turns the reality of a flat, two-dimensional image
into the illusion of a three-dimensional
object you can actually touch.
Achieved through lighting, color and contrast,
catching the right combination can give you a photograph
of leaves you want to plunge your hands into,
or a hand you know would feel like sandpaper.
Take a visual touch.


Color, like light,
can evoke a feeling—create a sensory reaction.
The right pairing of complementary colors
lends harmony to a photograph, tying two objects together.
Experience color.


"The devil is in the details"
is so true in the art of photography.
Photographers have a devil of a time
getting the photograph just right.
That's why we take so many shots of the same image.
See the moment.


Light has temperature. It warms. It cools.
It makes you feel with your eyes.
The reds in late afternoon light can warm you,
while the cool blue of icy water
can raise goosebumps. Light can draw your attention,
like a magnet pulling your eye to a certain spot
in a photograph. Light plays tricks, masking or
defining details. Light is harsh. Light is soft.
Light is everything to the art of photography.
Feel the light.


Texture gives photos dimension.
It turns the reality of a flat, two-dimensional image
into the illusion of a three-dimensional
object you can actually touch.
Achieved through lighting, color and contrast,
catching the right combination can give you a photograph
of leaves you want to plunge your hands into,
or a hand you know would feel like sandpaper.
Take a visual touch.


Color, like light,
can evoke a feeling—create a sensory reaction.
The right pairing of complementary colors
lends harmony to a photograph, tying two objects together.
Experience color.


"The devil is in the details"
is so true in the art of photography.
Photographers have a devil of a time
getting the photograph just right.
That's why we take so many shots of the same image.
See the moment.


Light has temperature. It warms. It cools.
It makes you feel with your eyes.
The reds in late afternoon light can warm you,
while the cool blue of icy water
can raise goosebumps. Light can draw your attention,
like a magnet pulling your eye to a certain spot
in a photograph. Light plays tricks, masking or
defining details. Light is harsh. Light is soft.
Light is everything to the art of photography.
Feel the light.


Texture gives photos dimension.
It turns the reality of a flat, two-dimensional image
into the illusion of a three-dimensional
object you can actually touch.
Achieved through lighting, color and contrast,
catching the right combination can give you a photograph
of leaves you want to plunge your hands into,
or a hand you know would feel like sandpaper.
Take a visual touch.


Color, like light,
can evoke a feeling—create a sensory reaction.
The right pairing of complementary colors
lends harmony to a photograph, tying two objects together.
Composing a photograph of objects with clashing colors
can jar your senses, but also draw your attention.
Color affects mood—happy yellows,
blood-stirring reds, nurturing greens, regal violets.
Some call it the color wheel. I call it the wheel of feelings.
Experience color.


"The devil is in the details"
is so true in the art of photography.
Photographers have a devil of a time
getting the photograph just right.
That's why we take so many shots of the same image.
We are always moving, looking for the best angle,
the perfect light to accentuate or silhouette,
the right colors in the right amounts to recreate the feeling,
the exact moment to stop time and capture the detail,
and in so doing capture the truth.
See the moment.

I want to...

Jazz up the look of my document

Lorem Ipsum

Lorem ipsum dolor sit amet, consectetur adipiscing elit. Nullam dignissim magna eu libero vestibulum tristique. Aliquam venenatis lacus id condimentum feugiat. Pellentesque convallis urna eu velit faucibus tincidunt a quis odio. Proin maximus nisl luctus massa laoreet, eget pellentesque nisi bibendum. Suspendisse venenatis dignissim eleifend. Ut ut lacinia nulla. Phasellus enim tortor, feugiat eget ullamcorper ut, ultricies ut augue. Nulla pharetra nulla vel orci laoreet, nec rutrum risus pellentesque. Fusce rhoncus tincidunt rutrum. Integer gravida, lacus eget volutpat eleifend, libero erat interdum magna, a varius tellus mauris eu nisl. Ut et cursus eros, id auctor leo. Ut sodales convallis velit at mollis. Curabitur et ligula bibendum, pharetra nisl quis, tristique arcu. Morbi in dapibus mi. Quisque non mauris risus.

Vestibulum

Nullam vestibulum tortor nibh, ac aliquet ante pulvinar vel. Nunc ex lorem, mollis vel consectetur et, efficitur scelerisque nunc. Phasellus quis justo imperdiet, porta neque quis, feugiat turpis. Aenean in dolor elementum, semper odio a, congue est. In et dolor eget ante feugiat commodo quis sed erat. Nullam et orci purus. Maecenas dolor tortor, interdum eu lobortis vel, rutrum ac felis. Cras eu elit vitae risus mattis facilisis. Suspendisse potenti. Curabitur non lorem cursus, molestie nibh quis, pulvinar nulla. Donec tempus nisi faucibus tellus congue, sit amet imperdiet ante scelerisque. Vestibulum vitae gravida nisl. Nam eget nulla enim. Morbi at arcu porttitor, vulputate enim sed, rutrum felis.

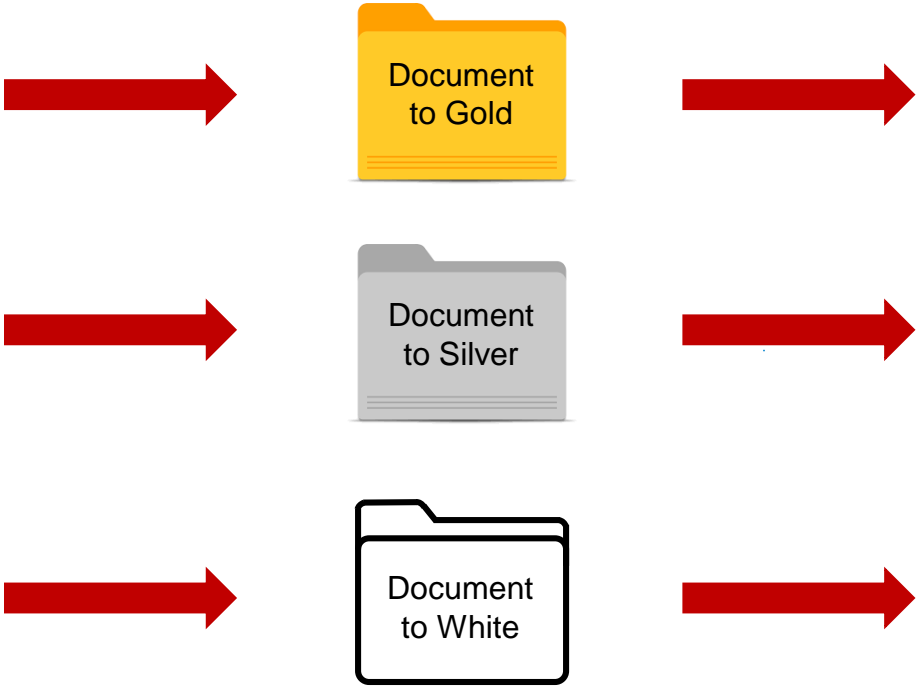
Sed scelerisque dolor ante, eu pellentesque ligula fermentum eget. Phasellus varius est sed augue commodo sodales. Morbi sapien diam, tristique ac metus in, ultrices faucibus dui. Nulla fringilla non ipsum non consectetur. Sed scelerisque, turpis ac consectetur laoreet, magna ipsum pretium turpis, ut elementum lectus nunc sit amet ligula. Cras sed lectus ligula. Vestibulum ante ipsum primis in faucibus orci luctus et ultrices posuere cubilia curae;

Vestibulum cursus nisl id turpis vestibulum molestie a in neque. Cras venenatis non risus et semper. Etiam tempor euismod condimentum. Vivamus quam nisl, congue id ex eget, luctus volutpat massa. Fusce vulputate lacus ipsum, sed sagittis nisi scelerisque vitae. Proin aliquet tellus ut dignissim euismod. Mauris congue libero urna, nec luctus massa gravida sit amet. Proin et turpis vitae ligula gravida imperdiet. Curabitur quis lorem quis risus pellentesque aliquet. Praesent quis tellus id mi tristique egestas.

Aliquam ipsum lacus, aliquam quis posuere nec, tincidunt in diam. Proin efficitur pharetra dignissim. Quisque id massa ac ligula gravida egestas. Nunc ut leo rutrum, volutpat metus at, vehicula mi. Orci varius natoque penatibus et magnis dis parturient montes, nascetur ridiculus mus. Sed eros tellus, fermentum placerat blandit id, rhoncus a lorem. Cras interdum malesuada mi, eget congue erat vehicula id. Aliquam hendrerit nulla a condimentum porta.

Original Document

Copy file into Hot Folder



FreeFlow Core automatically maps Document content to Gold, Silver, or White

Lorem Ipsum

Lorem ipsum dolor sit amet, consectetur adipiscing elit. Nullam dignissim magna eu libero vestibulum tristique. Aliquam venenatis lacus id condimentum feugiat. Pellentesque convallis urna eu velit faucibus tincidunt a quis odio. Proin maximus nisl luctus massa laoreet, eget pellentesque nisi bibendum. Suspendisse venenatis dignissim eleifend. Ut ut lacinia nulla. Phasellus enim tortor, feugiat eget ullamcorper ut, ultricies ut augue. Nulla pharetra nulla vel orci laoreet, nec rutrum risus pellentesque. Fusce rhoncus tincidunt rutrum. Integer gravida, lacus eget volutpat eleifend, libero erat interdum magna, a varius tellus mauris eu nisl. Ut et cursus eros, id auctor leo. Ut sodales convallis velit at mollis. Curabitur et ligula bibendum, pharetra nisl quis, tristique arcu. Morbi in dapibus mi. Quisque non mauris risus.

Vestibulum

Nullam vestibulum tortor nibh, ac aliquet ante pulvinar vel. Nunc ex lorem, mollis vel consectetur et, efficitur scelerisque nunc. Phasellus quis justo imperdiet, porta neque quis, feugiat turpis. Aenean in dolor elementum, semper odio a, congue est. In et dolor

Lorem Ipsum

Lorem ipsum dolor sit amet, consectetur adipiscing elit. Nullam dignissim magna eu libero vestibulum tristique. Aliquam venenatis lacus id condimentum feugiat. Pellentesque convallis urna eu velit faucibus tincidunt a quis odio. Proin maximus nisl luctus massa laoreet, eget pellentesque nisi bibendum. Suspendisse venenatis dignissim eleifend. Ut ut lacinia nulla. Phasellus enim tortor, feugiat eget ullamcorper ut, ultricies ut augue. Nulla pharetra nulla vel orci laoreet, nec rutrum risus pellentesque. Fusce rhoncus tincidunt rutrum. Integer gravida, lacus eget volutpat eleifend, libero erat interdum magna, a varius tellus mauris eu nisl. Ut et cursus eros, id auctor leo. Ut sodales convallis velit at mollis. Curabitur et ligula bibendum, pharetra nisl quis, tristique arcu. Morbi in dapibus mi. Quisque non mauris risus.

Vestibulum

Nullam vestibulum tortor nibh, ac aliquet ante pulvinar vel. Nunc ex lorem, mollis vel consectetur et, efficitur scelerisque nunc. Phasellus quis justo imperdiet, porta neque quis, feugiat turpis. Aenean in dolor elementum, semper odio a, congue est. In et dolor

Lorem Ipsum

Lorem ipsum dolor sit amet, consectetur adipiscing elit. Nullam dignissim magna eu libero vestibulum tristique. Aliquam venenatis lacus id condimentum feugiat. Pellentesque convallis urna eu velit faucibus tincidunt a quis odio. Proin maximus nisl luctus massa laoreet, eget pellentesque nisi bibendum. Suspendisse venenatis dignissim eleifend. Ut ut lacinia nulla. Phasellus enim tortor, feugiat eget ullamcorper ut, ultricies ut augue. Nulla pharetra nulla vel orci laoreet, nec rutrum risus pellentesque. Fusce rhoncus tincidunt rutrum. Integer gravida, lacus eget volutpat eleifend, libero erat interdum magna, a varius tellus mauris eu nisl. Ut et cursus eros, id auctor leo. Ut sodales convallis velit at mollis. Curabitur et ligula bibendum, pharetra nisl quis, tristique arcu. Morbi in dapibus mi. Quisque non mauris risus.

Vestibulum

Nullam vestibulum tortor nibh, ac aliquet ante pulvinar vel. Nunc ex lorem, mollis vel consectetur et, efficitur scelerisque nunc. Phasellus quis justo imperdiet, porta neque quis, feugiat turpis. Aenean in dolor elementum, semper odio a, congue est. In et dolor

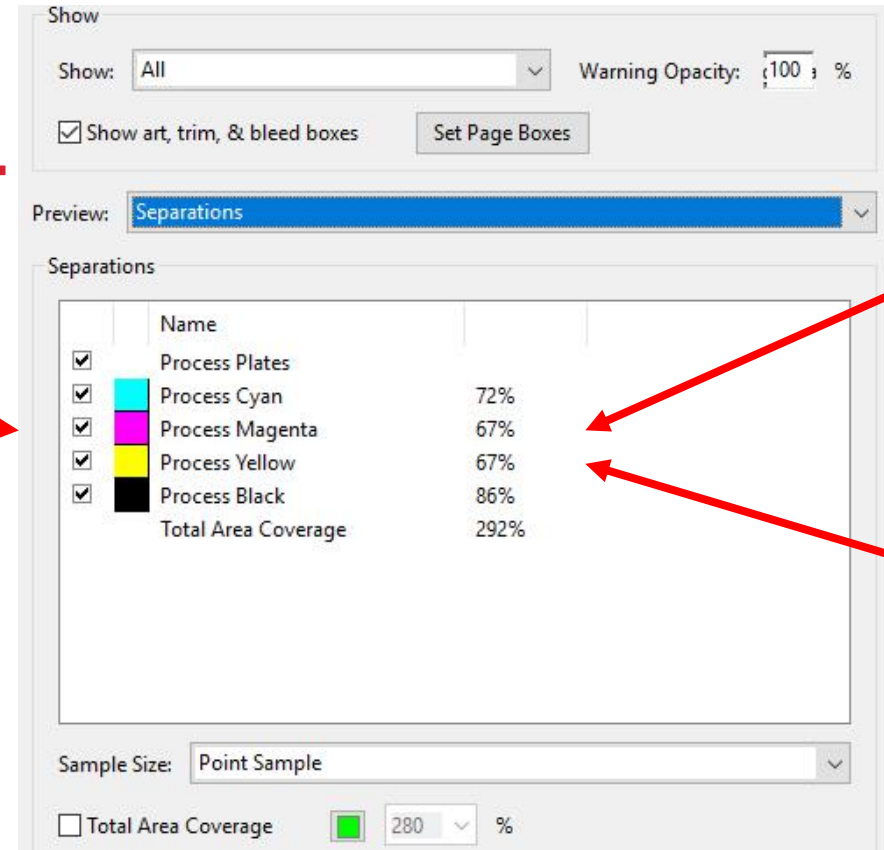
(Note white text shows up onscreen as cyan for viewing purposes)



I want to....
To make my Fluorescents POP! But my Blacks are CMYK Rich Black



**Rich Black
Dilutes
the Fluorescent Effect.**



MAY 20TH
SIGN UP NOW
Original Document

xerox™

I want to....

To make my Fluorescents POP! Use FreeFlow Core to Convert to Pure K.

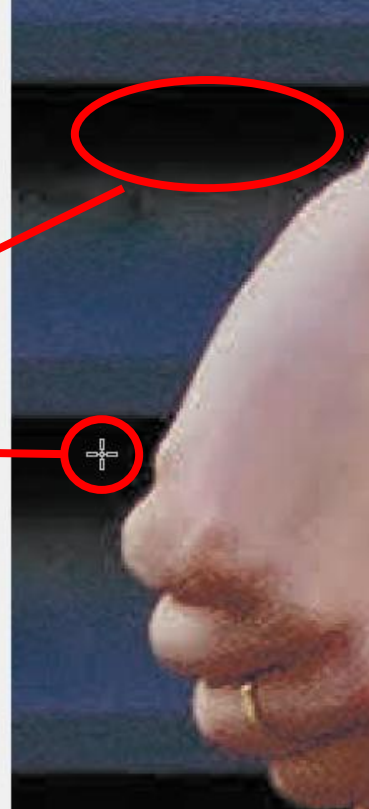
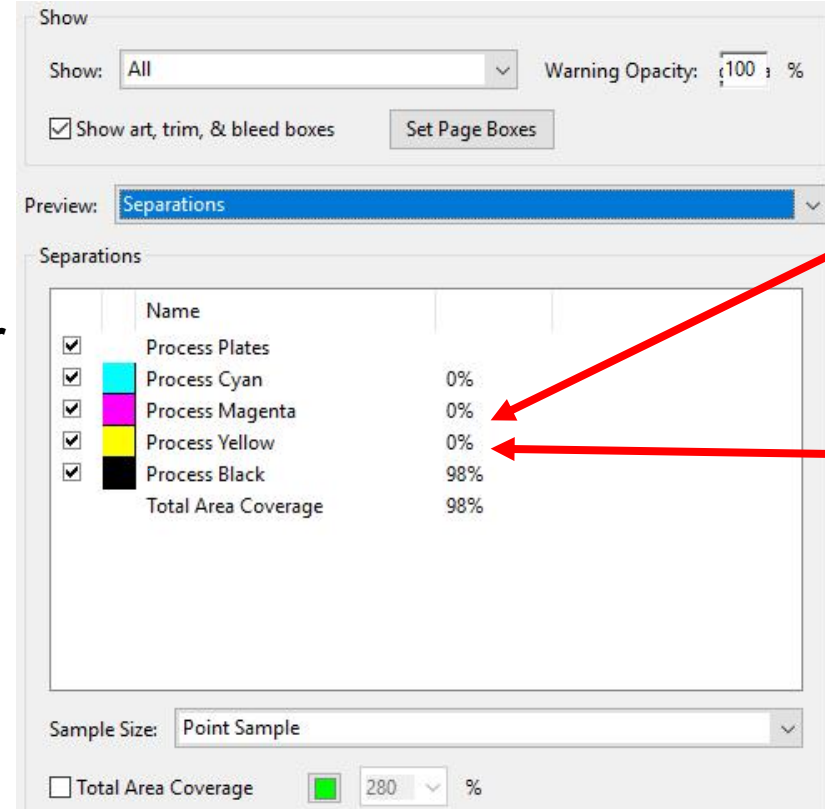


MAY 20TH
SIGN UP NOW

Original Document

Pure K
Enhances
the Fluorescent Effect.

Copy file into Hot Folder

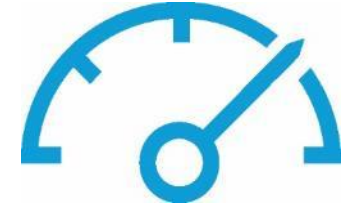


xerox™

Accelerator for PrimeLink / Versant

Installation Instructions

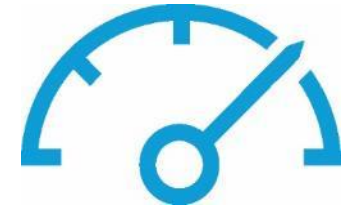
Install Instructions



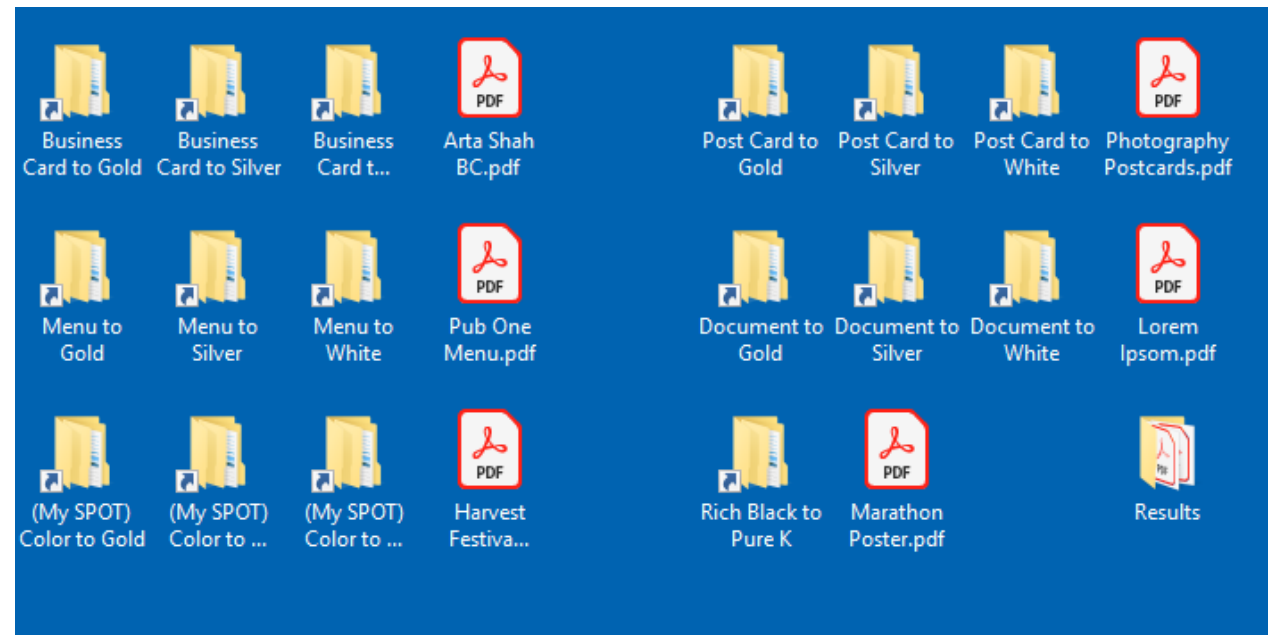
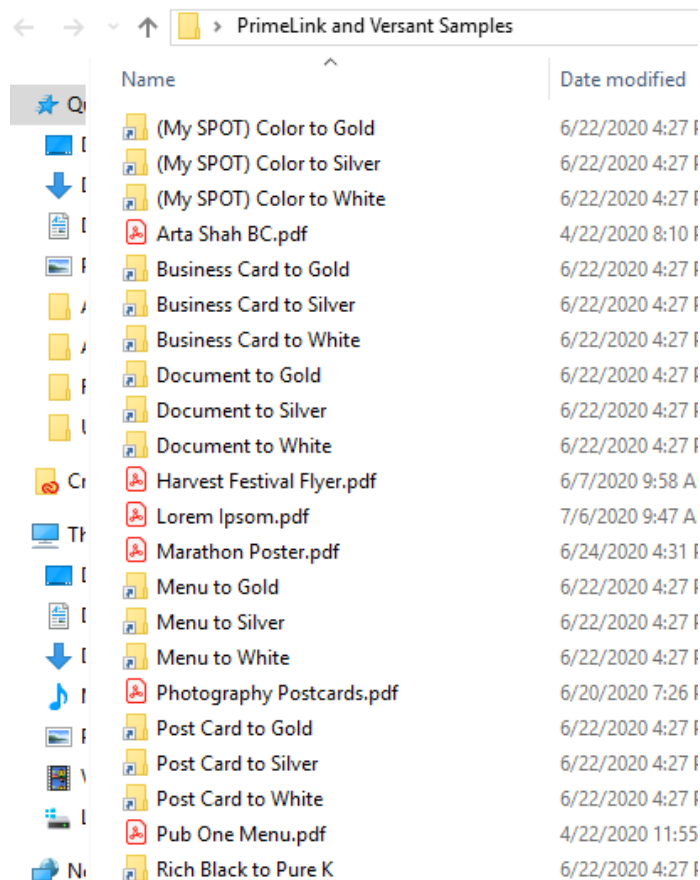
1. Log out of FreeFlow Core
2. Unzip to the FreeFlow Core Desktop
3. Execute either
 - a. **“Accelerator for PrimeLink – Versant Install - Imperial.bat”** – Imposes to 12x18
or
 - b. **“Accelerator for PrimeLink – Versant Install - Metric.bat”** – Imposes to SRA3
4. The files will be placed in a folder on the desktop called:
PrimeLink and Versant Samples

Continues next page

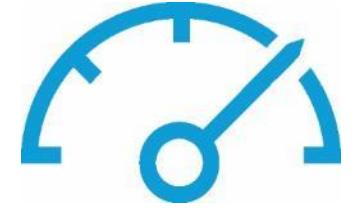
Install Instructions – Post Install



4. Open the Folder: **PrimeLink and Versant Samples**
5. Arrange the files on the desktop as:



Workflow Definitions



Application	Workflow	Workflow Steps	
Business Cards	PV – Turn my Business Card into Gold PV – Turn my Business Card into Silver PV – Turn my Business Card into White	PV – Turn All Colors into Gold, PV – Turn All Colors into Silver, PV – Turn All Colors into White,	PV – Max Up*, Save PV Results – Gold PV – Max Up, Save PV Results - Silver PV – Max Up, Save PV Results – White
Menu	PV – Turn my Menu into Gold PV – Turn my Menu into Silver PV – Turn my Menu into White	PV – Turn All Colors into Gold, PV – Turn All Colors into Silver, PV – Turn All Colors into White,	PV – Max Up, Save PV Results – Gold PV – Max Up, Save PV Results - Silver PV – Max Up, Save PV Results - White
Spot Color Document	PV – Turn (My SPOT) Color to Gold PV – Turn (My SPOT) Color to Silver PV – Turn (My SPOT) Color to White	PV – Turn (HarvestGreen) SPOT into Gold, PV – Turn (HarvestGreen) SPOT into Silver, PV – Turn (HarvestGreen) SPOT into White,	PV – Max Up, Save PV Results – Gold PV – Max Up, Save PV Results - Silver PV – Max Up, Save PV Results - White
Post Cards	PV – Turn my Post Card into Gold PV – Turn my Post Card into Silver PV – Turn my Post Card into White	PV – Turn All Colors into Gold, PV – Turn All Colors into Silver, PV – Turn All Colors into White,	PV – Max Up, Save PV Results – Gold PV – Max Up, Save PV Results - Silver PV – Max Up, Save PV Results - White
Document	PV – Turn my Document into Gold	PV – Turn All Colors into Gold, PV – Turn All Colors into Silver, PV – Turn All Colors into White,	Save PV Results – Gold Save PV Results - Silver Save PV Results - White
Rich Black Document	PV – Turn Rich Black into Pure K	PV – PV – Rich Black to Pure K,	PV – Max Up, Save PV Results

* Note: PV – Max Up sets imposition size of 12x18 or SRA3 and can be modified as needed