

Version 16.0.3.0
December 2020
702P08491

Xerox® FreeFlow® VI Suite What's New in Version 16.0.3.0 Reference Guide

© 2020 Xerox Corporation. All rights reserved. XEROX® and XEROX and Design®, FreeFlow®, FreeFlow Makeready®, FreeFlow Output Manager®, FreeFlow Process Manager®, VIPP®, and GlossMark® are trademarks of Xerox Corporation in the United States and/or other countries. Other company trademarks are acknowledged as follows:

Adobe PDFL - Adobe PDF Library Copyright © 1987-2020 Adobe Systems Incorporated.

Adobe®, the Adobe logo, Acrobat®, the Acrobat logo, Acrobat Reader®, Distiller®, Adobe PDF JobReady™, InDesign®, PostScript®, and the PostScript logo are either registered trademarks or trademarks of Adobe Systems Incorporated in the United States and/or other countries. All instances of the name PostScript in the text are references to the PostScript language as defined by Adobe Systems Incorporated unless otherwise stated. The name PostScript also is used as a product trademark for Adobe Systems implementation of the PostScript language interpreter, and other Adobe products. Copyright 1987-2020 Adobe Systems Incorporated and its licensors. All rights reserved. Includes Adobe® PDF Libraries and Adobe Normalizer technology.

Intel®, Pentium®, Centrino®, and Xeon® are registered trademarks of Intel Corporation. Intel Core™ Duo is a trademark of Intel Corporation.

Intelligent Mail® is a registered trademark of the United States Postal Service.

Macintosh®, Mac®, and Mac OS® are registered trademarks of Apple, Inc., registered in the United States and other countries. Elements of Apple Technical User Documentation used by permission from Apple, Inc.

Novell® and NetWare® are registered trademarks of Novell, Inc. in the United States and other countries. Oracle® is a registered trademark of Oracle Corporation Redwood City, California.

PANTONE™ and other Pantone Inc. trademarks are the property of Pantone Inc. All rights reserved. QR Code™ is a trademark of Denso Wave Incorporated in Japan and/or other countries.

TIFF® is a registered trademark of Aldus Corporation.

The Graphics Interchange Format© is the Copyright property of CompuServe Incorporated. GIFSM is a Service Mark of CompuServe Incorporated.

Windows®, Windows® 10, Windows Server® 2012, Windows Server® 2016, and Windows Server® 2019, and Internet Explorer are trademarks of Microsoft Corporation; Microsoft® and MS-DOS® are registered trademarks of Microsoft Corporation.

All other product names and services mentioned in this publication are trademarks or registered trademarks of their respective companies. They are used throughout this publication for the benefit of those companies, and are not intended to convey endorsement or other affiliation with the publication.

Companies, names, and data used in examples are fictitious unless otherwise noted.

While every care has been taken in the preparation of this material, no liability is accepted by Xerox Corporation arising out of any inaccuracies or omissions.

Changes are made periodically to this document. Changes, technical inaccuracies, and typographical errors are corrected in subsequent editions.

Produced in the United States of America.

Table of Contents

- 1 Introduction 5
 - Important License Information 6
 - Platform Support 7
 - VM Environments Support 8
 - Adobe Acrobat and Acrobat Reader 9
 - Purpose and Use of this Document 10
 - Upgrade Recommendation 11
 - Xerox Specialty Inks 12
- 2 Xerox® VIPP® Manage 16.0.3.0 13
 - New Features in Xerox® VIPP® Manage 14
- 3 Xerox® FreeFlow® VI eCompose 16.0.3.0 15
 - Platform Support 16
 - New Features in Xerox® FreeFlow® VI eCompose 17
- 4 Resolved Issues 19
- 5 Known Issues and Limitations 21
 - Xerox® FreeFlow® VI Design Express 22
 - Installing Xerox® FreeFlow® VI Design Express on Mac 22
 - Uninstalling Xerox® FreeFlow® VI Design Express on Mac 22
 - Compatibility with Adobe InDesign 2021 and macOS Version 11 23
 - Xerox® FreeFlow® VI Design Pro 24
 - Uninstalling Xerox® FreeFlow® VI Design Pro 24
 - Xerox® FreeFlow® VI Explorer 25
 - Uninstalling Xerox® FreeFlow® VI Explorer 25
 - Xerox® FreeFlow® VI eCompose 26
 - Enabling FreeFlow VI eCompose Web Application 26
 - Enabling Optional Features after the Initial Installation 26
 - Important Cluster Configuration Information 26
 - Initializing Xerox® FreeFlow® VI eCompose for the First Time 26
 - Upgrading from a Previous Version 27
 - Help System for the Xerox® FreeFlow® VI eCompose Web Interface 27
- 6 Important Information About PDF 29
 - Adobe PDF Print Engine (APPE) 30
 - PDF Using VI Suite Tool Set 31

Table of Contents

Adobe Acrobat and Adobe Reader Information.....	31
Configuring Adobe Acrobat and Adobe Reader Privileged Folder Settings.....	31
7 FreeFlow VI Suite Printer Support.....	35
Printer Support.....	36

Introduction

This chapter contains:

- [Important License Information](#) 6
- [Platform Support](#) 7
- [VM Environments Support](#) 8
- [Adobe Acrobat and Acrobat Reader](#) 9
- [Purpose and Use of this Document](#) 10
- [Upgrade Recommendation](#) 11
- [Xerox Specialty Inks](#) 12

The FreeFlow VI Suite 16.0.3.0 release is an update to the FreeFlow VI Suite 16.0.2.0 and 16.0.2.x Patch releases. The term VI Suite refers to one or more of the available FreeFlow VI Suite products.

Before you begin:

- Stop all FreeFlow VI Suite programs that are running currently.
- Close and exit all FreeFlow VI Suite programs that are running currently.

For example, if you are installing VI eCompose, before you begin installing a newer version of the product, exit VI eCompose. If VI eCompose services are running, before you begin any installation, close and exit the program.

Important License Information

If you are upgrading from a prior major release, for example, versions 15.0, 15.0.1.0, 15.0.2.0, or 15.0.3.0, to enable the product, obtain a version 16.0 license file.

- For customers: Use the original SWAP key supplied with your original order or purchase. At the License Menu, enter the SWAP key.
- For internal updates: Refer to the information supplied in the ISA or MAPS systems.




Note: When you are updating Xerox® VIPP® Manage software on a FreeFlow Print Server (FFPS) device, no license update is required if the previous version of the software license was activated.

Platform Support

All FreeFlow VI Suite products run on the following 32-bit or 64-bit operating systems:

- Windows 10 (version 2004). Ensure that Windows 10 is maintained at the latest supported software level.
- Windows Server 2012
- Windows Server 2012 R2
- Windows Server 2016
- Windows Server 2019

As of version 16.0.1.0, Windows 7, Windows 8.1, Windows Server 2008, and 2008 R2 are not supported for any FreeFlow VI Suite products. Version 16.0.3.0 is the last release that supports Windows Server 2012, Server 2012 R2, and 32-bit operating systems for the FreeFlow VI Suite products.

 **Note:** The following software is not supported: Foundation, Core, Home, Mobile, the Internet of Things, Starter, S, Team, and Essential editions of all Microsoft Operating Systems.

For Xerox® FreeFlow® VI Design Express, the supported macOS versions are as follows:

- macOS (Intel Processor)
 - Adobe InDesign 2019 (macOS 10.12.x–10.14.x)
 - Adobe InDesign 2020 (macOS 10.13, 10.14, 10.15.4–10.15.x)

For FreeFlow VI Design Express for Mac and Windows operating system support, refer to the Adobe InDesign or Adobe Create Suite documentation for Adobe InDesign system requirements.

VM Environments Support

All products, except the VI Compose product, can operate in a VM environment. No support is offered for the configuration or management of the VM system. Where applicable, for license activation, each VM system requires a unique NIC or Mac address.

Adobe Acrobat and Acrobat Reader

For important information about versions of Adobe Acrobat and Adobe Acrobat Reader, access the FreeFlow VI eCompose information, then refer to the Adobe Acrobat section.

It is important to review the Adobe Acrobat section for information about APPE, PDF, and VT requirements, and the required settings for Adobe Acrobat and Adobe Acrobat Reader.

Purpose and Use of this Document

If you are upgrading from a prior release of the FreeFlow VI Suite software, to become familiar with new or enhanced content, read this document.

Refer to the FreeFlow VI Suite release documentation on the www.xerox.com website.

1. In a Web browser, type www.xerox.com.
2. Select **Customer Support**→**All Support and Drivers**.
3. For product type, select **Software & Platforms**, then select **FreeFlow**→**FreeFlow Variable Information Suite**.
4. On the FreeFlow Variable Information Suite page, select **Documentation**.



Note: You can find FreeFlow VI Design Express documentation in the Installer download zip file that has the .dmg extension. For the latest information, it is recommended that you read the Readme.txt file that is installed with each product.


Upgrade Recommendation

It is recommended that whenever you upgrade one component of the FreeFlow VI Suite, you upgrade all other VI Suite components. Keeping all components up to date helps to avoid VI Suite product mismatches that can result in VIPP® jobs failing with errors such as `Command Not Found`.

When using FreeFlow VI Design Express and FreeFlow VI Design Pro, it is critical that you upgrade any VI component that renders the VIPP® application. The components include VI Compose on the printer, and VI eCompose, which generates PDF files from VIPP® applications.

To locate the latest versions of the FreeFlow VI Suite components on the www.xerox.com website:

1. In a Web browser, type www.xerox.com.
2. Select **Customer Support** → **All Support and Drivers**.
3. For product type, select **Software & Platforms**, then select **FreeFlow** → **FreeFlow Variable Information Suite**.
4. On the FreeFlow Variable Information Suite page, select the **Software and Solutions** tab.

 **Note:** The version of Xerox® VIPP® Manage software and the version of FFPS server are not dependent upon each other. An FFPS server is pre-installed with a demonstration version of Xerox® VIPP® Manage software limited to 200 pages per job. It is recommended that you upgrade the version of Xerox® VIPP® Manage software on the FFPS server with the latest available Xerox® VIPP® Manage release. The FFPS Update Manager is one way to update the version of Xerox® VIPP® Manage software on FFPS servers.

When the VI Suite of applications is running in trial mode, the number of pages per job is limited to 200 pages. When printing VI jobs on office printers under trial mode, the limit is 10 pages. For production printers, the trial mode limit is 200 pages.

When you run the VI Suite of applications in trial mode, this table describes the trial period for each application.

Application	Trial period after initial installation
Xerox® FreeFlow® VI Design Pro	60 days
Xerox® FreeFlow® VI Explorer	0 days
Xerox® FreeFlow® VI Design Express	30 days
Xerox® FreeFlow® VI eCompose	60 days

Xerox Specialty Inks

Xerox Specialty Inks (XSI) are an option on Xerox DC1000/800 and iGen5 devices, supported by FFPS, and EFI digital front end devices. Xerox Specialty Inks include:

- Clear
- Gold
- Silver



Note: Prior to the version 14.0 software release, the Xerox Specialty Inks feature was known as Clear Dry Ink, and the only color option was Clear. With the addition of the Gold and Silver options, the feature is renamed Xerox Specialty Inks.

Xerox® VIPP® Manage 16.0.3.0

This chapter contains:

- [New Features in Xerox® VIPP® Manage](#) 14

New Features in Xerox® VIPP® Manage

This section lists all new features introduced since the release of Xerox® VIPP® Manage 16.0.3.0. New features and enhancements include the following:

- When you use the **Load Files** command, to add the files, drag the files to the Add Files dialog.
- Online Help is now available. When you click **Help**, the contents appear in a browser.

3

Xerox® FreeFlow® VI eCompose 16.0.3.0

This chapter contains:

- Platform Support 16
- New Features in Xerox® FreeFlow® VI eCompose 17

Platform Support

Xerox® FreeFlow® VI eCompose software runs on the following 32-bit or 64-bit operating systems:

- Windows 10
- Windows Server 2012
- Windows Server 2012 R2
- Windows Server 2016
- Windows Server 2019



Note: If Windows 10 version 1909 is installed on the system, ensure that the latest update is installed. FreeFlow VI eCompose version 16.0.3.0 is the last version supported on Windows Server 2012, Server 2012 R2, and 32-bit operating systems.



Note: If you intend to enable the optional Xerox® FreeFlow® VI eCompose Web Application, before you run the Xerox® FreeFlow® VI eCompose installer, install Microsoft .NET Framework 4.8 from the Microsoft website. Previously, Xerox® FreeFlow® VI eCompose Web Application was known as Xerox® FreeFlow® VI eCompose Web Server.

Web browsers supported are the current versions of modern browsers from Apple®, Google®, Microsoft®, and Mozilla®.

Microsoft Internet Explorer and the original Microsoft Edge are not supported. Only Microsoft Chromium Edge is supported.

Browsers older than one year are not supported. To avoid compatibility issues, always use the latest version of the browser.


Always use desktop computer browsers. Mobile device browsers can exhibit display issues.


New Features in Xerox® FreeFlow® VI eCompose


This section lists all new features introduced since the release of Xerox® FreeFlow® VI eCompose 16.0.2.0. New features and enhancements include the following:


The Xerox® FreeFlow® VI eCompose user interface was upgraded from release 16.0.2.0. The new interface for desktop utilities aligns with the Windows 10 interface. An updated installation utility installs the application.

To access the Xerox® FreeFlow® VI eCompose browser interface, enter the URL address in the browser as `http://<Server IP address>/FreeFlowVIeCompose` or `https://<Server IP address>/FreeFlowVIeCompose`.

 **Note:** FreeFlow VI eCompose version 16.0.3.0 uses Windows Internet Information Services (IIS) to enable using a Web browser optionally to submit VIPP® jobs and perform administrative functions on the server. During installation, you are asked if you want to enable this feature. To start and stop the Web application, use Windows Internet Information Services manager.

 **Note:** If you upgrade FreeFlow VI eCompose from a version that is earlier than 16.0.2.x, perform the following: After you install version 16.0.3.0, verify that the saved configurations are present using this version. If you did not install the upgrade directly over an older version in the same location, uninstall the older version manually. If you installed the upgrade over a previous version in the same location, do not uninstall the previous version, because it leaves the version 16.0.3.0 installation in an unusable state.

 **Note:** For the best user experience when you use the Web browser, maximize the browser window.

 **Note:** For security reasons, you can install FreeFlow VI eCompose to a location other than the root of the installation drive. The default VIeC installation location is `C:\Program Files (x86)\Xerox\VIIPP\xvtp`. The default xgfc location is `C:\Program Files (x86)\Xerox\VIIPP\xgfc`.

The full paths of user jobs or files and system built-in macros can contain spaces, which can cause problems with parsing. For example, the following Dispatch rule CommandTemplate definition, `CommandTemplate=(C:\my.bat $(PDF_FILE_PATH))`, does not work when the expanded `PDF_FILE_PATH` contains a space, because it is read as two parameters, instead of one. To ensure correct parsing of user scripts of batch files and system built-in macros, use double quotes, for example `CommandTemplate=(C:\my.bat "$ (PDF_FILE_PATH) ")`. For backwards compatibility, it is still possible to install Xerox® FreeFlow® VI eCompose to the root of a drive, for example, `C:\xvtp`. However, Xerox® FreeFlow® VI eCompose no longer installs to the root of a drive by default.

Resolved Issues

Xerox® FreeFlow® VI Design Express

- Fixed issue where Rotate View using Adobe InDesign disrupts all VI fields.
- Fixed issue where Rotation affects Specialty Imaging effects on the Adobe InDesign document.
- Fixed issue where the Correlation Key pattern does not work correctly when using Adobe InDesign Rotate View applied to the document.
- Fixed issue when Void Pantograph is applied on top of text, image, graphics when applied directly.

Xerox® FreeFlow® VI eCompose

Fixed issue where the error `Unable to produce PDF file` occurs intermittently when jobs are processed.

Xerox® VIPP® Manage

Fixed issue where VIPP® Manage does not install a printer license.

Resolved Issues

Known Issues and Limitations

This chapter contains:

- Xerox® FreeFlow® VI Design Express 22
- Xerox® FreeFlow® VI Design Pro..... 24
- Xerox® FreeFlow® VI Explorer 25
- Xerox® FreeFlow® VI eCompose..... 26

Xerox® FreeFlow® VI Design Express

If you are upgrading from a version earlier than 16.0.2.0, before you install Xerox® FreeFlow® VI Design Express version 16.0.3.0, ensure that you uninstall the current version of Xerox® FreeFlow® VI Design Express.

Installing Xerox® FreeFlow® VI Design Express on Mac

To install Xerox® FreeFlow® VI Design Express on a Mac, perform the following:

1. Open the file, VDE_Install_16.0.3.x.dmg.
2. Copy the installation file, VDEInstaller.app to the desktop.
3. To start the installation, from the desktop, open the installation file.



Note: If a dialog box appears with the message iCloud Drive may not work properly, to proceed, select **OK**.

Installing the Xerox® FreeFlow® VI Design Express Software for both Versions of Adobe InDesign

If both Adobe InDesign 2019 and 2020 are installed, and you need to install the Xerox® FreeFlow® VI Design Express software for both versions of Adobe InDesign, perform the following:

1. Run the Xerox® FreeFlow® VI Design Express installer.
2. Select the option to install Adobe InDesign Creative Cloud 2019.
3. When the installation is complete, run the installer again and select Adobe InDesign 2020.



Note: If you uninstall Xerox® FreeFlow® VI Design Express, it is uninstalled for both Adobe InDesign 2019 and 2020.

Xerox® FreeFlow® VI Design Express does not support Adobe InDesign 2021. Do not install Xerox® FreeFlow® VI Design Express for Adobe InDesign 2021. Xerox® FreeFlow® VI Design Express is not supported on macOS version 11, Big Sur.

Upgrade VI Compose on the Printer

If you are using Xerox® FreeFlow® VI Design Express version 16.0.3.0, ensure that you upgrade VI Compose to version 16.0.3.0 on the printer.



Note: Before you choose automatic Adobe InDesign or Creative Cloud updates, verify that your version of VDE runs on the later version of the Adobe software. Ensure that you disable this automatic update process.

Uninstalling Xerox® FreeFlow® VI Design Express on Mac

To uninstall Xerox® FreeFlow® VI Design Express on a Mac, perform the following:

1. Open Launchpad.
- 22 Xerox® FreeFlow® VI Suite
What's New in Version 16.0.3.0 Reference Guide

2. Select **Change Xerox FreeFlow VI Design Express Installation**.
3. Enter Administrator credentials, then select **Uninstall**.

If the Xerox® FreeFlow® VI Design Express is installed for both Adobe InDesign 2019 and 2020, uninstalling removes the Xerox® FreeFlow® VI Design Express plug-in from both Adobe InDesign versions.

Compatibility with Adobe InDesign 2021 and macOS Version 11

Xerox® FreeFlow® VI Design Express does not support Adobe InDesign 2021. Do not install Xerox® FreeFlow® VI Design Express for Adobe InDesign 2021.

Xerox® FreeFlow® VI Design Express is not supported on macOS version 11, Big Sur.

Xerox® FreeFlow® VI Design Pro

Uninstalling Xerox® FreeFlow® VI Design Pro

Un-install VI Design Pro does not always appear in the Xerox FreeFlow VI Design Pro program menu.

To uninstall, select **Settings**→**Apps Wizard**.

Xerox® FreeFlow® VI Explorer

Uninstalling Xerox® FreeFlow® VI Explorer

Un-install VI Explorer does not always appear in the Xerox FreeFlow VI Explorer program menu.

To uninstall, select **Settings**→**Apps Wizard**.

Xerox® FreeFlow® VI eCompose

Enabling FreeFlow VI eCompose Web Application

If you want to enable the optional FreeFlow VI eCompose Web application, ensure that the Microsoft Internet Information Service manager (IIS) is installed. For the systems with Windows Server 2012, 2012R2, and 2016, to enable IIS, run the batch file, `Install_IIS.bat`, as Administrator, in the `Tools` directory of the installation package. Before you run the FreeFlow VI eCompose installer, ensure that you execute the IIS batch file.

Enabling Optional Features after the Initial Installation

To enable the optional FreeFlow VI eCompose features, run the installer, and select the features that you want to enable, such as Web Application or LPR Job Submission.

Important Cluster Configuration Information

When you configure Xerox® FreeFlow® VI eCompose in a cluster configuration, to grant access to remote resources for the `default_user`, do the following. Remote resources include access to remote files using mapped network drives.

- If the remote resources are all in the same domain and the logged-in user has read and write access to that location, the application has access to those locations by default.
- If the remote resources are in different networks or require different credentials, when you map the drive in Windows, use the enable the remember credentials option to store the credentials, then perform the following steps:
 1. Open the IIS Management Console (INETMGR.MSC).
Ensure that you perform this procedure in Client and Server systems where IIS is installed.
 2. Open the Application Pools node underneath the machine node. Select the **WebAppPool** application pool that you want to change. By default, the application runs automatically for generated application pool identity.
 3. Right-click the **WebAppPool** application pool, then select **Advanced Settings**.
 4. Select the Identity List item, then click the ellipsis button.
 5. Select the **Custom Account** radio button, then click **Set**. Enter your administrator user name and password, then click **OK**. If you are in a domain, enter the user name as `domain/username`.
 6. Click **OK**.

Initializing Xerox® FreeFlow® VI eCompose for the First Time

After the system restart of Xerox® FreeFlow® VI eCompose, if you connect to the Web Application for the first time, there is a delay before the login dialog appears.

Upgrading from a Previous Version

When you upgrade from a previous version, the new default installation directory is `C:\Program Files (x86)\Xerox\VIIP\vxtp` and the default `xgfc` location is `C:\Program Files (x86)\Xerox\VIIP\xgfc`. It is possible to modify these default directories. If you change the directory locations to the same location as an existing previous installation, do not uninstall the previous version. If you use the same location as a previous installation, this leaves the 16.0.3.0 system in an unusable state. After you upgrade from systems prior to 16.0.0.0, you can use the `sha2passwd` utility to reset the password of a user. After you upgrade to 16.0.3.0, you can use the utility only once for a registered user.

Help System for the Xerox® FreeFlow® VI eCompose Web Interface

When you select the Help (?) icon in the Xerox® FreeFlow® VI eCompose server Web interface, the User Guide opens as a PDF file.

6

Important Information About PDF

This chapter contains:

- [Adobe PDF Print Engine \(APPE\)](#) 30
- [PDF Using VI Suite Tool Set](#) 31

Adobe PDF Print Engine (APPE)

Media and finishing control is available with PDF output when generated by FreeFlow VI eCompose which requires option to be selected and printing to the FFPS OR when printing VIPP® directly to the FFPS using the APPE path.

To print to the FFPS, ensure that you set the FFPS queue to APPE and the format to PDF.

Ensure that you have the latest FFPS software installed on the target print device, version 93.D4.x.x or later.

PDF Using VI Suite Tool Set

You can convert a VIPP® job to PDF using one of three methods.

1. VI eCompose is the FreeFlow VI Suite production-level VIPP®-to-PDF solution. The VI eCompose software runs on a Windows server. Four input clients are provided, including LPR, Watched Folder, Job Submission Client, and the Web submission client. The VI eCompose software, based on the content of the VIPP® application, generates a Master PDF. It can generate child PDF files also and move those PDF files to the next step in your workflow using the VI eCompose Dispatch module. For more information on FreeFlow VI eCompose, refer to the *FreeFlow VI eCompose User Guide* or go to www.xerox.com.
2. VI Design Pro, the interactive design environment for the generation of code-based VIPP® applications, has an **Export job as PDF** option from the file menu. You can use this option to generate a Master PDF file. For more information on FreeFlow VI Design Pro, refer to the *FreeFlow VI Design Pro User Guide* or www.xerox.com.
3. VI Design Express is the Adobe InDesign plug-in that runs on a Windows PC or a Mac OS system. This plug-in allows for rapid development of delimited-based VIPP® applications. FreeFlow VI Design Express supports an option to generate PDF output using the **VI Design Express PDF** option from the InDesign Export menu.

Adobe Acrobat and Adobe Reader Information

If you are using PDF Objects as VIPP® resources in your VIPP® application and you need to view the PDF file output from VI eCompose using Adobe Acrobat or Adobe Reader, ensure that you are using Adobe Acrobat or Adobe Reader, version 10.1.4 or later.

Configuring Adobe Acrobat and Adobe Reader Privileged Folder Settings

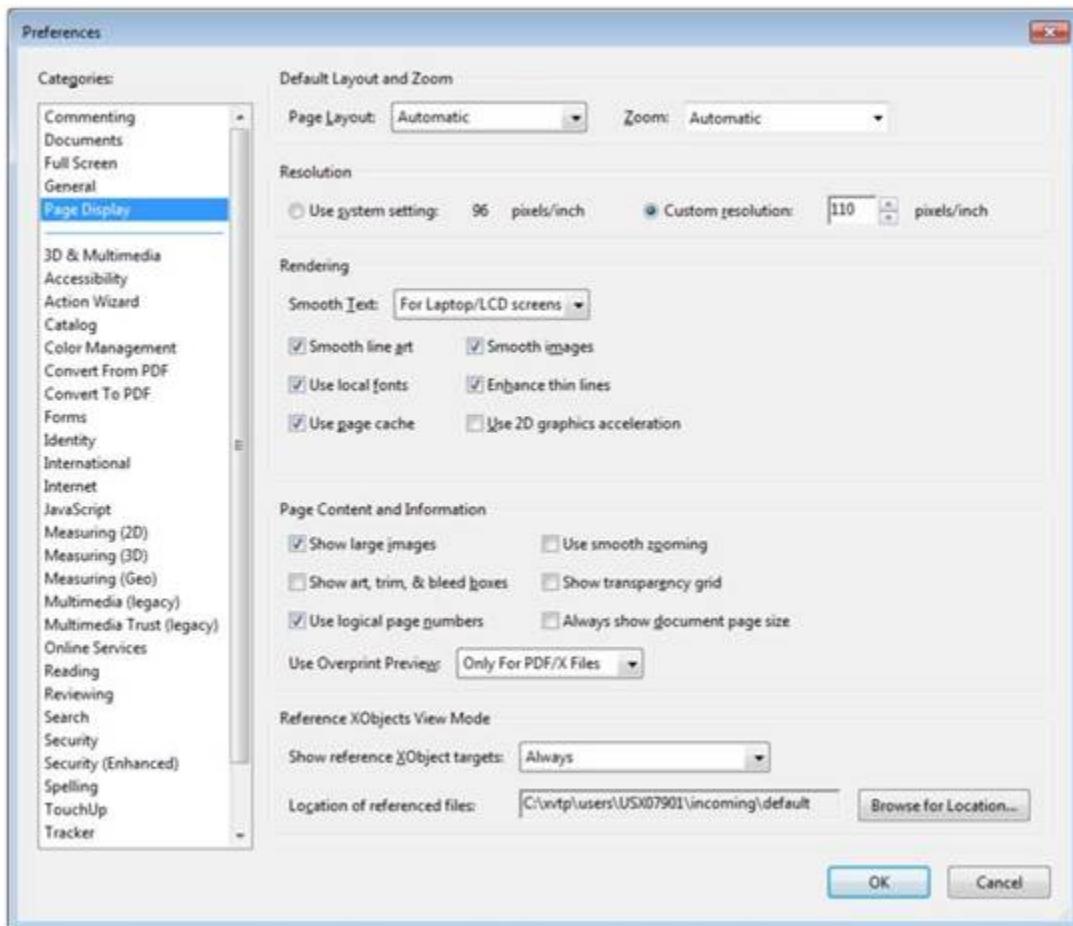
To view PDF files that contain VIPP® PDF resources, ensure that you open the PDF file from an Adobe Acrobat or Adobe Reader privileged folder.

To create a privileged folder, edit the following Adobe Acrobat or Adobe Reader preferences:

1. From the Adobe application, select **Edit** → **Preferences**.
2. Under Categories, select **Page Display**.
3. At the bottom of the window, under Reference XObjects View Mode, for Show reference XObject targets, select **Always**.

Important Information About PDF

4. For Location of referenced files, specify the path to the directory that contains the PDF files generated by VIeC.

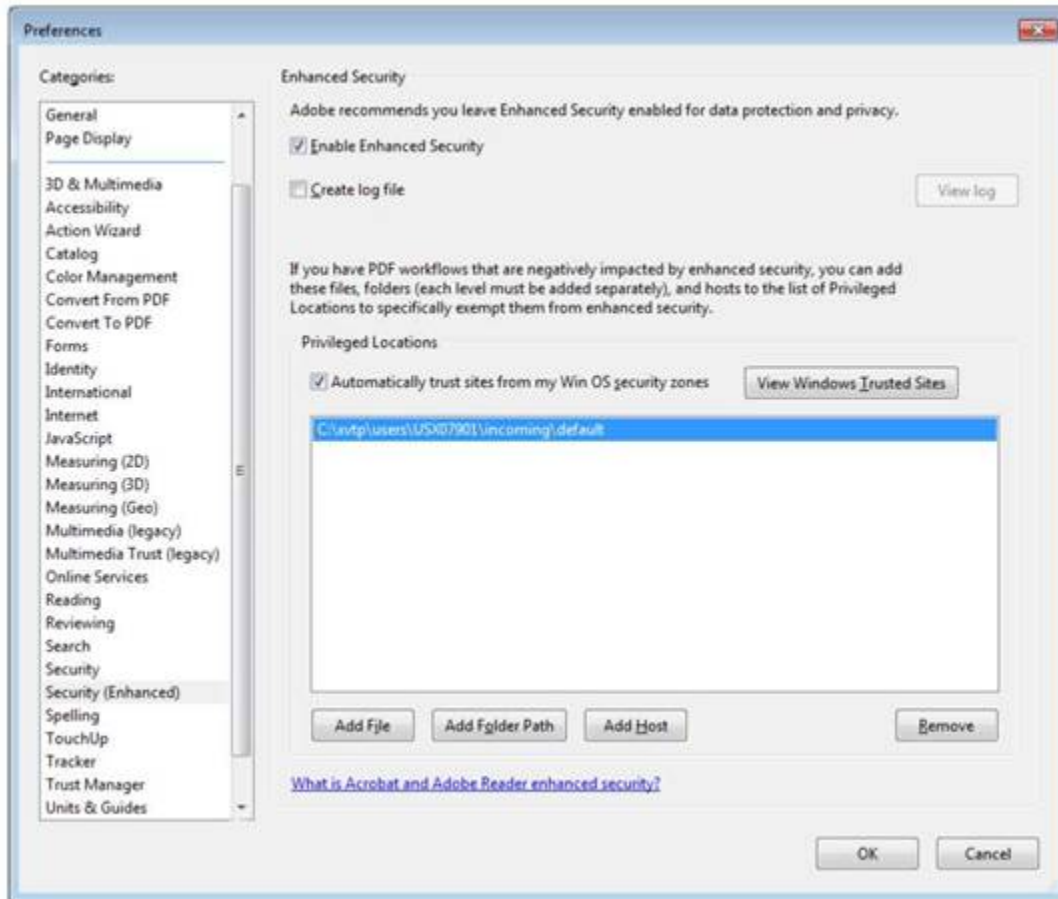


Note:

- It is recommended that you select the VIeC incoming folder instead of the folder containing a specific job.
- As long as all of the PDFs generated by VIeC are under the same incoming folder hierarchy, all referenced PDFs will be located and properly displayed.

5. Under Categories, select **Security (Enhanced)**.

6. Under Privileged Locations, click **Add Folder Path**, then specify the same folder as specified for Location of referenced files.



Note:

- The referenced XObjects are independent of the Enhanced Security checkbox. The state of the checkbox does not govern viewing of referenced XObjects.
- Any of the following can cause Adobe Acrobat or Adobe Reader to display **Missing:** followed by the name of the missing PDF resource:
 - The version of Acrobat or Reader does not support Referenced XObjects
 - The preferences were not setup correctly
 - The PDF file was opened from a non-privileged folder

FreeFlow VI Suite Printer Support

This chapter contains:

- [Printer Support.....](#) 36

Printer Support

The FreeFlow VI suite 16.0.3.0 release adds support for the following printers:

Printer	Controller and Minimum Supported Version
Xerox® Versant® 180 Press	Xerox® EX/EXi 180 Print Server Powered by Fiery®
Xerox® Versant® 280 Press	Xerox® EX/EXi 280 Print Server Powered by Fiery®
Xerox® PrimeLink® C9065/C9070 Printer	Xerox® EX/EX-i/EX-c 9065-70 Print Server Powered by Fiery® and Xerox® Integrated Color Server
Xerox® Iridesse™ Production Press	Xerox® EX-P 6 Print Server Powered by Fiery®

 **Note:** VIPP® printing is not supported on the Xerox® AltaLink® series printers.

Currently, VIPP® Specialty Imaging (SI) printing is not supported on the Xerox® Baltoro™ HF Inkjet Press or on the Xerox® Versant® 4100 Press.

Additional information about the VIPP® Specialty Imaging support for these printers can be found at www.xerox.com. Select **Customer Support** → **All Support and Drivers**. For product type, select **Software & Platforms**, then select **FreeFlow** → **FreeFlow Variable Information Suite**. Go to the documentation area, then search for **FreeFlow VI Suite Specialty Imaging Customer Report**.

