

XEROX®

 FreeFlow™

Version 6.0, September 2007
701P47193

FreeFlow®
Web Services
Output Manager
Integration

Powered by  Press-sense

Xerox Corporation
Global Knowledge & Language Services
800 Phillips Road
Building 845
Webster, New York 14580

Copyright © 1996-2007 Xerox Corporation. All rights reserved. XEROX®, Xerox Canada Ltd®, Xerox Limited®, FreeFlow®, The Document Company® and all identifying numbers used in connection with the Xerox products mentioned in this publication are trademarks of XEROX CORPORATION. Copyright protection claimed includes all forms and matters of copyrightable material and information now allowed by statutory or judicial law or hereinafter granted, including without limitations, material generated from the software programs which are displayed on the screen such as styles, templates, icons, screen displays looks, etc.

While every care has been taken in the preparation of this material, no liability will be accepted by Xerox Corporation arising out of any inaccuracies or omissions. Printed in the United States of America.

Other company trademarks are acknowledged as follows:

Adaptec®, the Adaptec logo, SCSISelect®, and EZ-SCSI® are trademarks of Adaptec, Inc.

Adobe PDFL - Adobe PDF Library Copyright © 1987-2005 Adobe Systems Incorporated.

Adobe®, the Adobe logo, Acrobat®, the Acrobat logo, Acrobat Reader®, Distiller®, Adobe PDF JobReady™, and PostScript®, and the PostScript logo are either registered trademarks or trademarks of Adobe Systems Incorporated in the United States and/or other countries. All instances of the name PostScript in the text are references to the PostScript language as defined by Adobe Systems Incorporated unless otherwise stated. The name PostScript also is used as a product trademark for Adobe Systems' implementation of the PostScript language interpreter, and other Adobe products.

Copyright 1987 - 2005 Adobe Systems Incorporated and its licensors. All rights reserved.

Autologic® is a registered trademark of Autologic Information International, Inc.

Compaq® and QVision® are registered United States Patent and Trademark Office, for Compaq Computer Corporation.

DEC, DEC RAID, and Redundant Array of Independent Disks are registered trademarks of Digital Equipment Corporation.

Dundas - This software contains material that is (c) 1997-2000 DUNDAS SOFTWARE LTD., all rights reserved.

Imaging Technology provided under license by Accusoft Corporation.

ImageGear © 1996-2005 by AccuSoft Corporation. All Rights Reserved.

Intel® and Pentium® are registered trademarks of Intel Corporation.

Novell® and NetWare® are registered trademarks of Novell, Inc. in the United States and other countries.

Oracle® is a registered trademark of Oracle Corporation Redwood City, California

TMSSequoia - ScanFix® Image Optimizer Copyright © TMSSEQUOIA, Inc. 1991-2000. All rights reserved.

Sony™ and Storage by Sony™ are trademarks of Sony.

PANTONE™ and other Pantone, Inc. trademarks are the property of Pantone Inc.

Preps™ is a registered trademark of Creo Inc. All rights reserved.

Quark® and QuarkXpress® are registered trademarks of Quark, Inc.

StorageView™ is a trademark of CMD Technology, Inc.

TIFF® is a registered trademark of Aldus Corporation.

Windows®, Windows XP®, Windows Server® 2003, and Internet Explorer are trademarks of Microsoft Corporation; Microsoft® and MS-DOS® are registered trademarks of Microsoft Corporation.

Portions Copyright © 2001 artofcode LLC.

This software is based in part on the work of the Independent JPEG Group.

Portions Copyright © 2001 URW++. All Rights Reserved.

This product includes software developed by the Apache Software Foundation.

Copyright © 1999-2003 The Apache Software Foundation. All rights reserved.

This software is based in part on the work of Graeme W. Gill.

© Press-sense Ltd. 2002-2007. All rights reserved.

Includes Adobe® PDF Libraries and Adobe Normalizer technology

The Graphics Interchange Format © is the Copyright property of CompuServe Incorporated. GIFSM is a Service Mark property of CompuServe Incorporated.

Portions contain an implementation of the LZW algorithm licensed under U.S. Patent 4,558,302.

Parts of this software Copyright © 2004-2006 Enterprise Distributed Technologies Ltd. All Rights Reserved.

Parts of this software Copyright © 1995-2003, The Cryptix Foundation Limited. All Rights Reserved.

Parts of this software are a SSLv3/TLS implementation written by Eric Rescorla and licensed by Claymore Systems, Inc. All Rights Reserved.

Parts of this software Copyright © 2002, Lee David Painter and Contributors. Contributions made by Brett Smith, Richard Pernavas, Erwin Bolwidt.

Parts of this software Copyright © 1995-2005, Jean-loup Gailly and Mark Adler.

All other product names and services mentioned in this publication are trademarks of their respective companies. They are used throughout this publication for the benefit of those companies, and are not intended to convey endorsement or other affiliation with the publication.

Companies, names, and data used in examples herein are fictitious unless otherwise noted.

Changes are periodically made to this document. Changes, technical inaccuracies, and typographical errors will be corrected in subsequent editions.

Contents

Introduction	1
Overview.....	1
Integration	1
Defining an Output Device for Output Manager	2
Create a New Output Device	2
Output Channels Set-up	3
Defining Queues	4
Pricing	5
Printing a FreeFlow Web Services Job to FreeFlow Output Manager.....	6
System Requirements.....	7
FreeFlow Web Services Requirements.....	7
Output Manager Minimum Requirements	7
References.....	7

Introduction

Overview

The *FreeFlow Output Manager* is a server-based output manager designed to provide a single point of Job management for network production printing. It addresses the needs of the Publishing and Print-On-Demand environments. *FreeFlow Output Manager* includes load balancing to address capacity and asset utilization requirements, such as Job splitting, color splitting and copy splitting capabilities for robust cluster printing.

FreeFlow Output Manager accepts Jobs in *JDF / JMF* format and can support clients that use this format.

FreeFlow Output Manager accepts documents from *FreeFlow Web Services* and automatically routes them to printers based on load, availability and job requirements. This increases printer efficiency and productivity.

Web Services uses *JMF* (Job Messaging Format) when transferring files to and from *FreeFlow Output Manager*. *JMF* is a standardized XML document that is often used for Job submission, Snapshots of Job and device status, Dynamic Job update and more.

Integration

The integration between *Web Services* and *FreeFlow Output Manager* comprises the following steps:

Setup:

- 1 Defining available Printers on the *FreeFlow Printer Administration*.
- 2 Defining available Queues on the *FreeFlow Output Manager* software and connecting them to the available printers in the *FreeFlow Printer Administration*.
- 3 Defining a dedicated *Output Device* in *Web Services* for *FreeFlow Output Manager*.

Job Printing:

- 4 Printing a Job in *Web Services*: The Job is sent, over *HTTP*, to *FreeFlow Output Manager* with relevant information and files.
- 5 The Job is processed in *FreeFlow Output Manager* and printed.

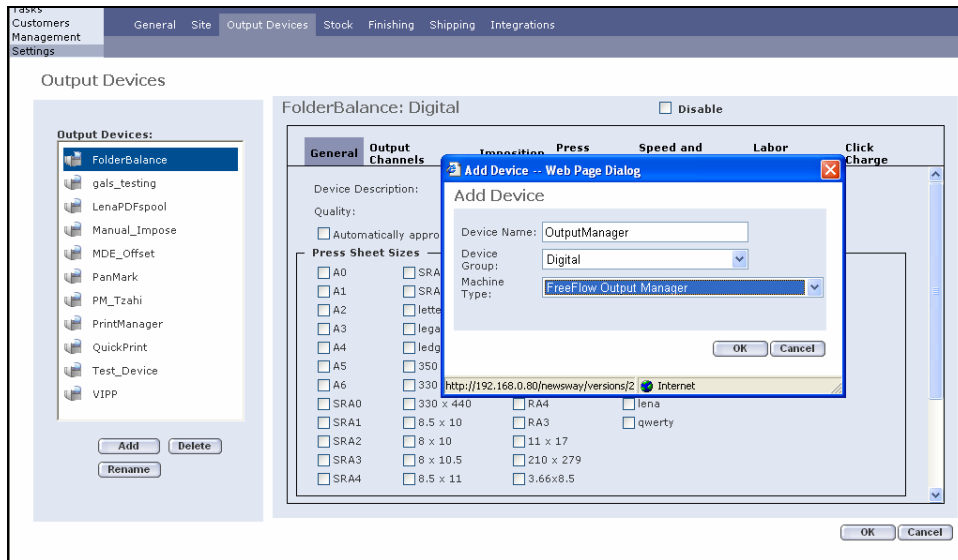
This document describes steps 3 and 4. For details on definitions and usage of the *FreeFlow Printer Administration* and *FreeFlow Output Manager* (steps 1, 2 and 5), refer to the relevant *Xerox User Guides*.

Defining an Output Device for Output Manager

Create a New Output Device

In order to create a *FreeFlow Web Services* output device for *FreeFlow Output Manager*, carry out the following steps:

- 1 In the *Web Services* web site, click on *Settings/Output Devices*.
- 2 Click on the *Add* button; the *Add Device* dialog box appears.



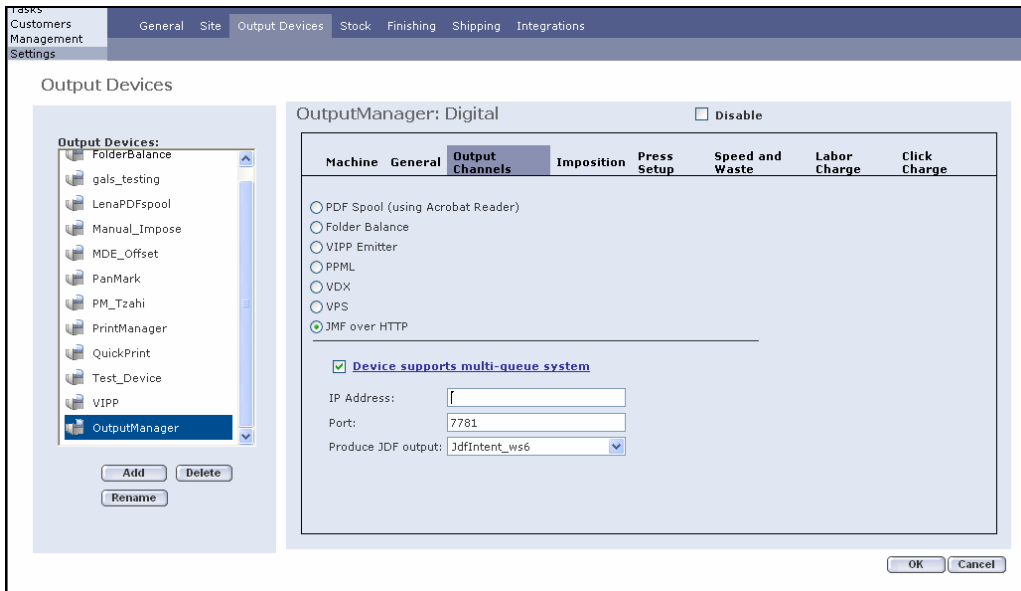
- 3 In *Device Name*, enter an appropriate name.
- 4 In *Device Group*, select *Digital* from the dropdown list.
- 5 In *Machine Type*, select *FreeFlow Output Manager* from the dropdown list.
- 6 Click on *OK* to close the *Add Device* dialog box; the *Output Device* is added to the *Output Devices* list. The settings for the *Output Device* are shown to the right of the list.
- 7 In *Press Sheet Sizes*, select the appropriate sizes.

Note: The *Device Description* name can be changed to a familiar name.

Output Channels Set-up

In order to set up the path for the Job files and *Job Tickets* to be transferred to the *FreeFlow Output Manager* after approval (submission) of a Job, carry out the following steps:

- 1 In the *Output Devices* window, click on the *Output Channels* tab.



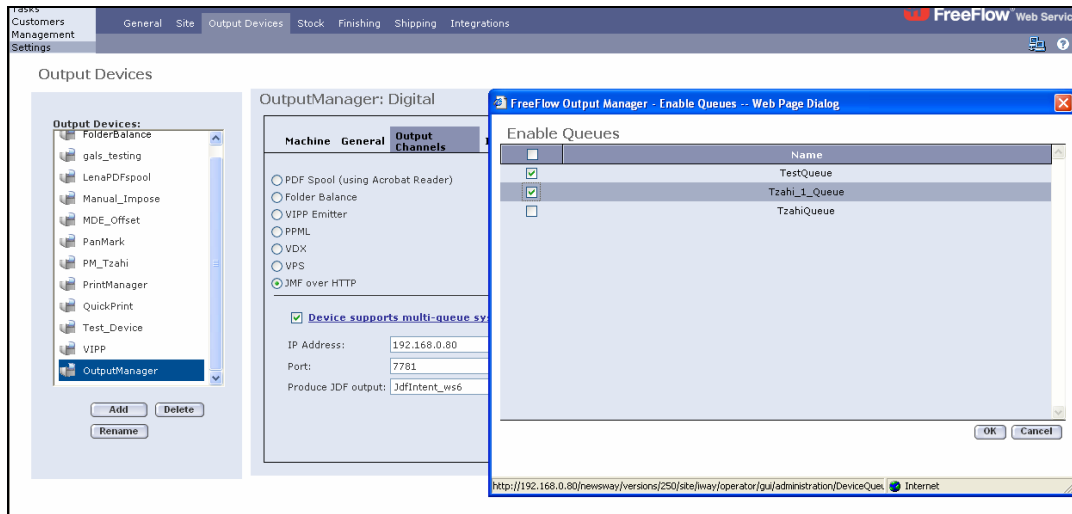
- 2 Verify that the *JMF over HTTP* radio button is selected.
- 3 Verify that *Device supports multi-queue system* checkbox is selected.
- 4 In *IP Address*, enter the *IP Address* or the *Host name* of the server where *Output Manager* is installed.
- 5 In *Port*, verify that 7781 is displayed.
- 6 In *Produce JDF output*, verify that *JdfIntent_ws6* is selected.
- 7 Click on *OK* to save changes.

Defining Queues

Important: The IP Address should be set and saved prior to defining queues, as explained above.

In order to connect to the queues previously set-up in the *FreeFlow Output Manager*, carry out the following steps:

- 1 In the *Output Devices/Output Channels* set-up window, click on *Device supports multi-queue system* link; the *Enable Queues* dialog box appears



When clicking this link, the user will see a “No data to display” message that indicates that no queues are yet available in the *FreeFlow Web Services*. At least one queue needs to be defined, as explained in the next step.

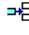
Notes: If entering this link at a later stage (after the *Output device* was already set up), the user will see a list of queues already available and registered in *Web Services*.

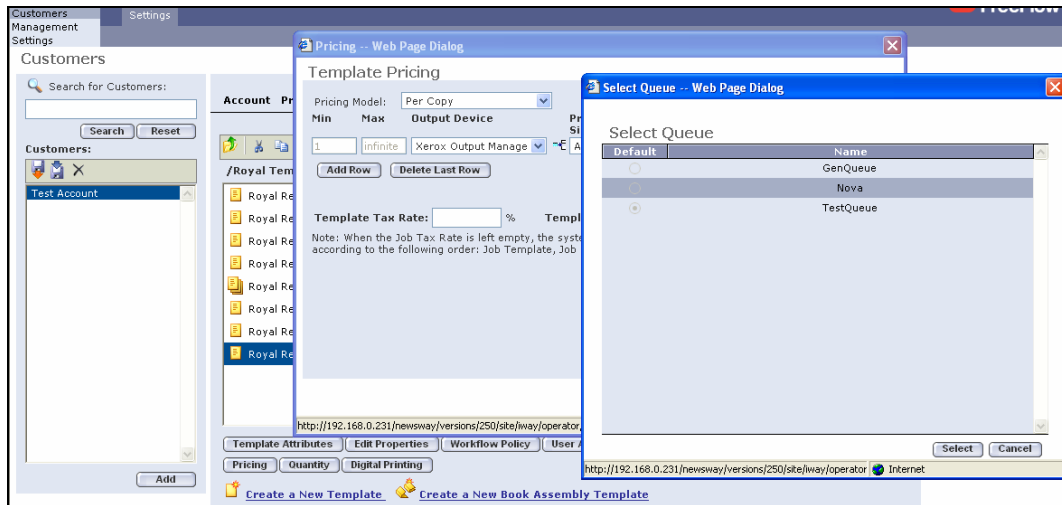
The *Web Services* registered queues list may not reflect the actual list of queues currently defined in the *FreeFlow Output Manager*. In order to synchronize *Web Services* registered and *FreeFlow Output Manager* defined queues, use the *Available Queues* option, as defined in the next step.

- 2 Click on the *Available Queues* button for synchronizing with *FreeFlow Output Manager*; the list of queues currently defined and available in the *FreeFlow Output Manager* appears.
- 3 Select the relevant queues for this *Output Device* by selecting one or more checkboxes.
- 4 Click on *OK*.
- 5 Select the queue you want to serve as the default and click on *OK*.
- 6 Click on *Save*.

Pricing

Note: Pricing can be pre-set at either the Output device settings, or at a Customer/Template Level or Job Type/Job Subtype.

- 1 To set pricing for the *Output Device*, define the pricing parameters under the relevant tabs in *Settings/Output Devices* for the *Output Manager Output Device*.
- 2 To set pricing at the *Template* level: In the *FreeFlow Web Services* web site, click on *Customers/Settings/ Templates*, select a template and click on *Pricing*. Go to step 4.
- 3 To set pricing at the *Job Subtype* level: Click on *Management/Job Type Library*, make a selection from the *Job Subtype* list, and then click on the *Pricing*. Go to step 4.
- 4 From the *Pricing Model* dropdown list, select *Per Copy*.
- 5 Click on *Add Row* and enter appropriate prices.
- 6 Select the *Xerox Output Manager* from the *Output Device* dropdown menu; this was the *Output Device* previously set-up.
- 7 Click on the  icon; the *Select Queue* dialog box appears.




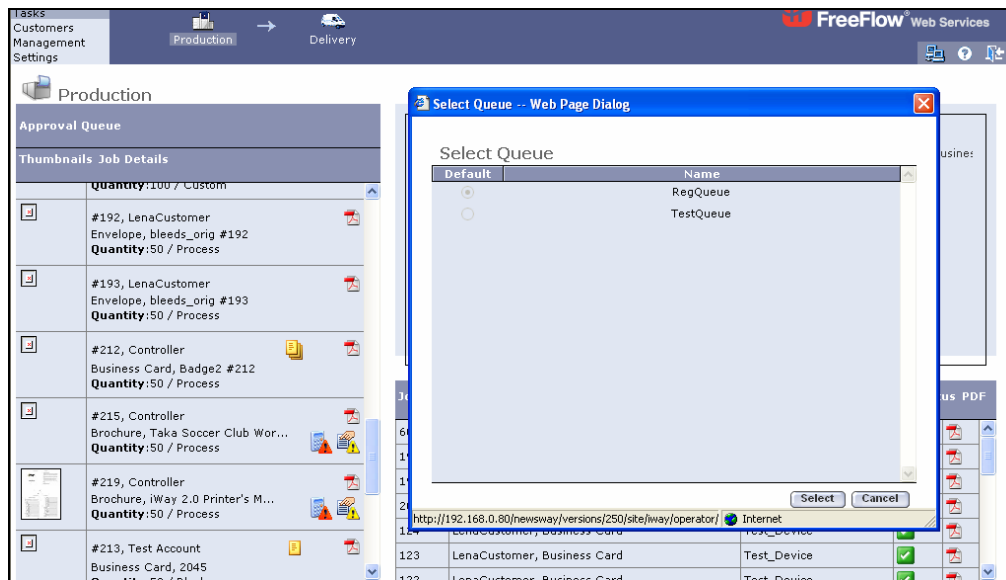
- 8 Select the *Queue Name* and click on *Select*.

Note: Any order for the specific customer template of a new Job or Template created with this Job Type will automatically have this device selection designated in the Tasks/Production/Job Info/Device.

Printing a FreeFlow Web Services Job to FreeFlow Output Manager

In order to approve a *FreeFlow Web Services*-based Job for printing through *FreeFlow Output Manager*, carry out the following steps:



- 1 In the *Web Services* web site, click on *Tasks/Production*.
- 2 Select the relevant Job in the *Approval* queue.
- 3 Verify that the *Output Device* is set to *Output Manager* (this can be viewed in the *Job Info* panel on the right side of the window). If the *Output Device* is not *Output Manager*, click on *Edit Imposition* and adjust the *Output Device* dropdown.
- 4 Accept the selected *Output Manager* queue or select a different queue for the Job:
 - 4.1 Click on the *Multiple Queue* icon in *Job Info* next to the *Device* name ; a dialog box appears with a list of *FreeFlow Output Manager* queues currently registered in *FreeFlow Web Services*.
 - 4.2 Accept the selected queue or change the *Queue Selection* by selecting a different *Queue Name*.



- 4.3 Click on *Select*.

Note: If no target queue has been selected, the queue that is set as default will be used.

- 5 Click on *Approve*.

Note: The Job file is bundled in a *MIME* encoded package together with the *JMF* message and *JDF Job Ticket* and is sent over *HTTP* to the *IP* address defined in the *Output Channels* set-up. The Job will appear in the relevant queue in *FreeFlow Output Manager*, where it is possible to complete the production print.
- 6 The approval is successful when the  icon appears in the *Status* column.
- 7 Jobs that fail in the *Printing Queue* are generally due to network errors (the  icon appears). Examine the *Device* set-up to diagnose this problem.

System Requirements

FreeFlow Web Services Requirements

- *FreeFlow Web Services* 6.0
- Integration enabled on the *FlexLM* license

Output Manager Minimum Requirements

- Output Manager version 6.0 or higher

References

- [FreeFlow_Output_Manager_2_0_Install_Guide_701P45414.pdf](#)
- [FreeFlow_Output_Manager_2_0_User_Guide_701P45415.pdf](#)
- FreeFlow Printer Administration User Guide

