

FreeFlow® Print Server V9 SP3
November 2012
702P01073



Xerox® FreeFlow® Print Server

Timer Based Calibration User Guide



©2012 Xerox Corporation. All rights reserved. Xerox®, Xerox and Design® and FreeFlow® are trademarks of Xerox Corporation in the United States and/or other countries. BR5189

Changes are periodically made to this document. Changes, technical inaccuracies, and typographic errors will be corrected in subsequent editions.

Document Version: 1.0 (November 2012).

Table of Contents

Timer Based Calibration	2
Summary.....	2
Background.....	2
Description	2
Automatic Color Calibration Mode	7
Elapsed Time and Pages Printed.....	7
Stock Name	8
Accept Resultant Tone Reproduction Curves (TRCs) Automatically.....	8

[This page left intentionally blank]

Timer Based Calibration

Summary

Calibration of the printer is essentially setting it up for optimum ink distribution on paper. Calibration ensures linear progression of the ink tints from 100 % to 1 % without a tonal distortion. Calibration also ensures the best color saturation for vivid color prints as each paper absorbs ink differently. The user needs to create a separate calibration for each paper use.

This feature enables the user to perform the calibration automatically by selecting either “Elapsed Time” (specified time duration to start the calibration process) or on the number of pages printed. The objective of this goal is to include new button “Configure Auto Calibration” on GUI and the functionalities associated with it. Also “Boundary window” and “Copy Count” information are removed.


Background

Previously the user cannot configure the elapsed time and number of pages to print for automatic calibration (using Inline Sensor).

While enabling the auto calibration mode, Time and Page values for the calibration process are already defined by the user. Later the whole calibration process is carried out automatically by the system, and no user interpretation is required to specify Page counts or Time limits in between. The quantity values are set by default for the calibration output.

Description

System calibrates automatically either depending on elapsed time or on the number of pages printed. This is helpful to ensure the color consistency.

Select “Calibration/Calibration” in the “Associations” window or the Calibration  icon menu in the FreeFlow GUI as shown in the below given screen shots; to specify the calibration properties

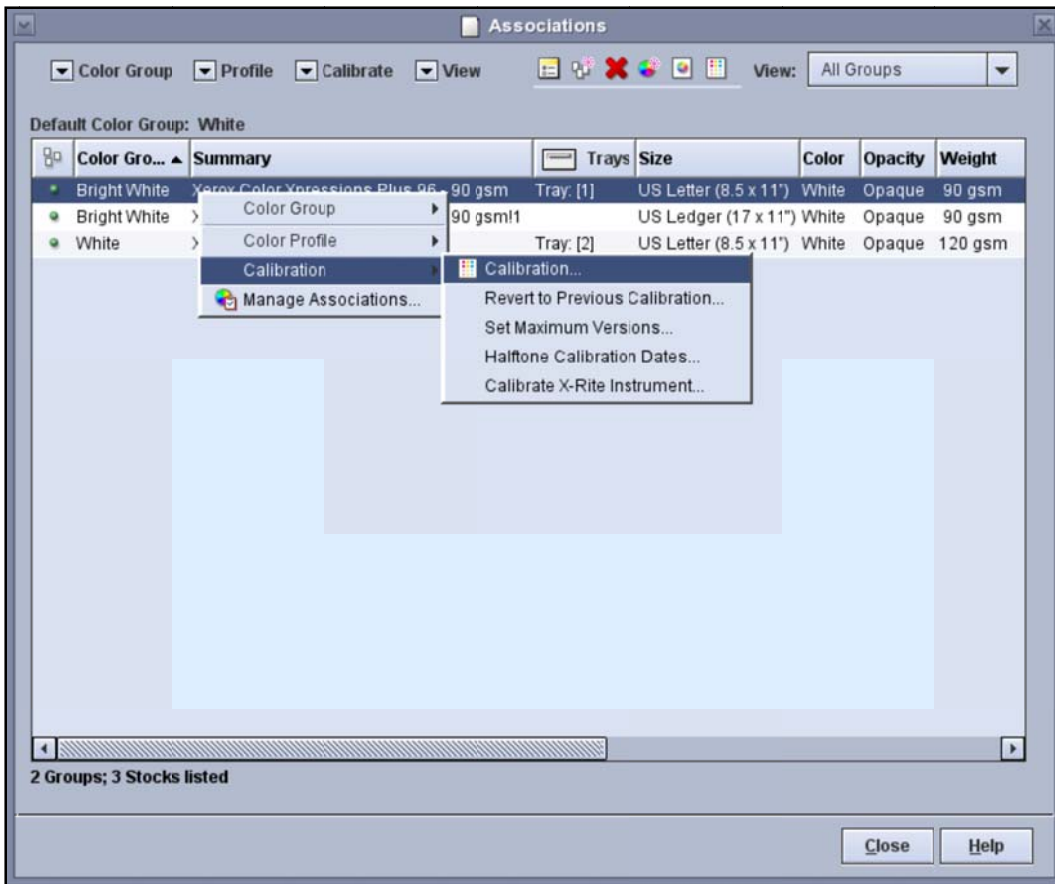


Figure 1: Selecting Calibration Menu Item

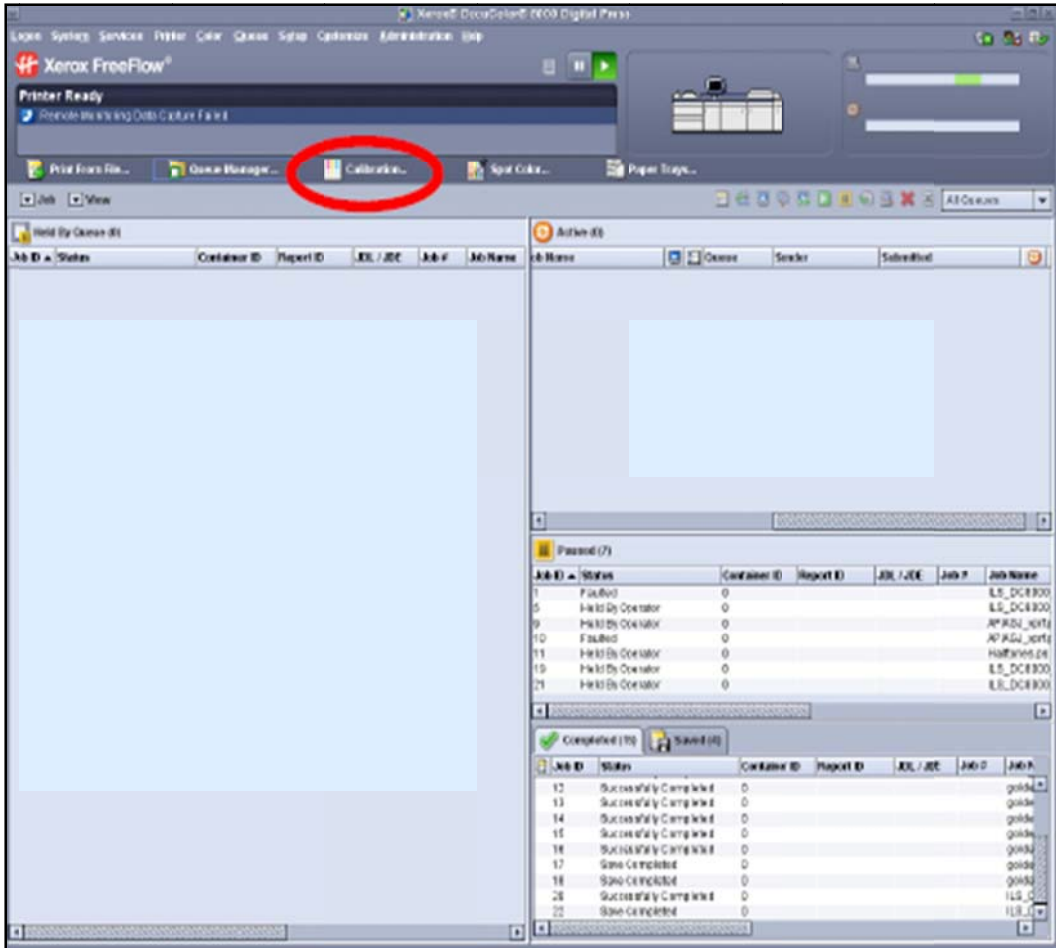


Figure 2: Selecting the Calibration... Icon

Click "Configure Auto Calibration" button in the Calibration window as shown in the below given screen shot.

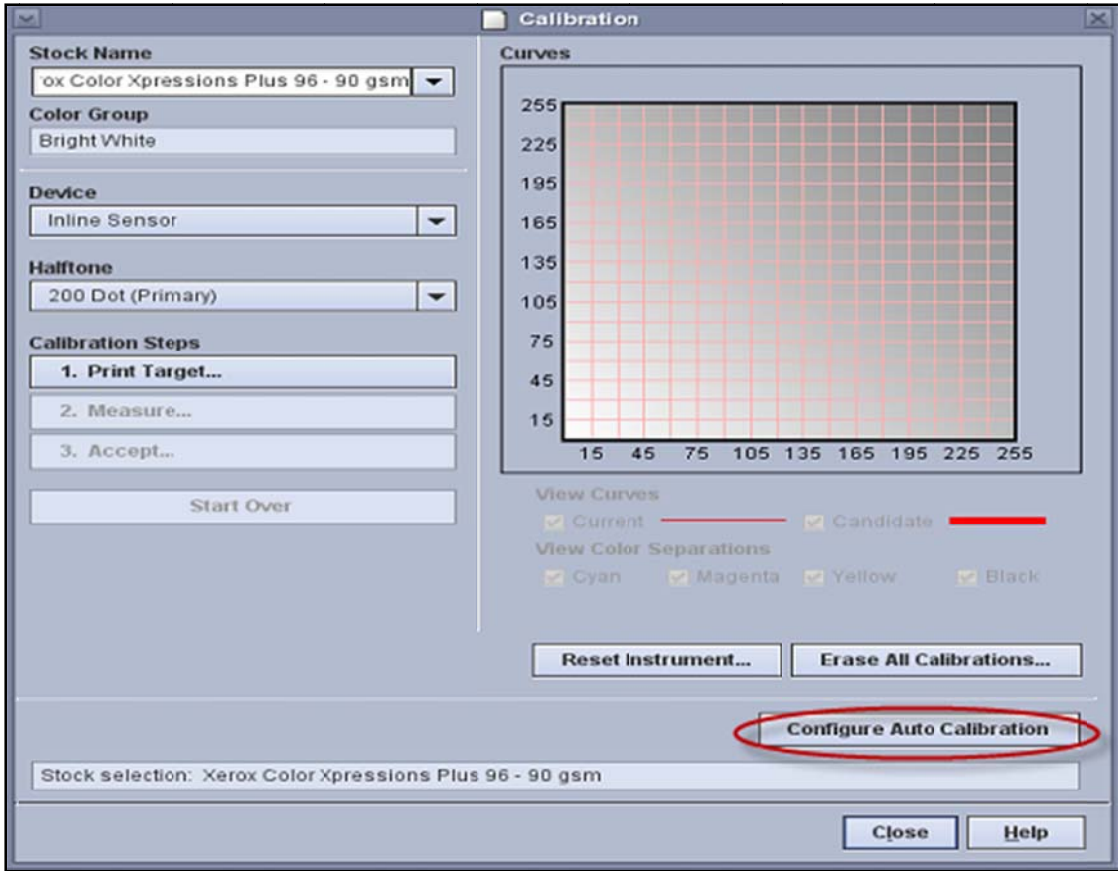


Figure 3: Calibration window

When the automatic calibration window is displayed, and the Automatic Color Calibration Mode is enabled, several parameters are available for selection and modification as shown in the below given screen shot.

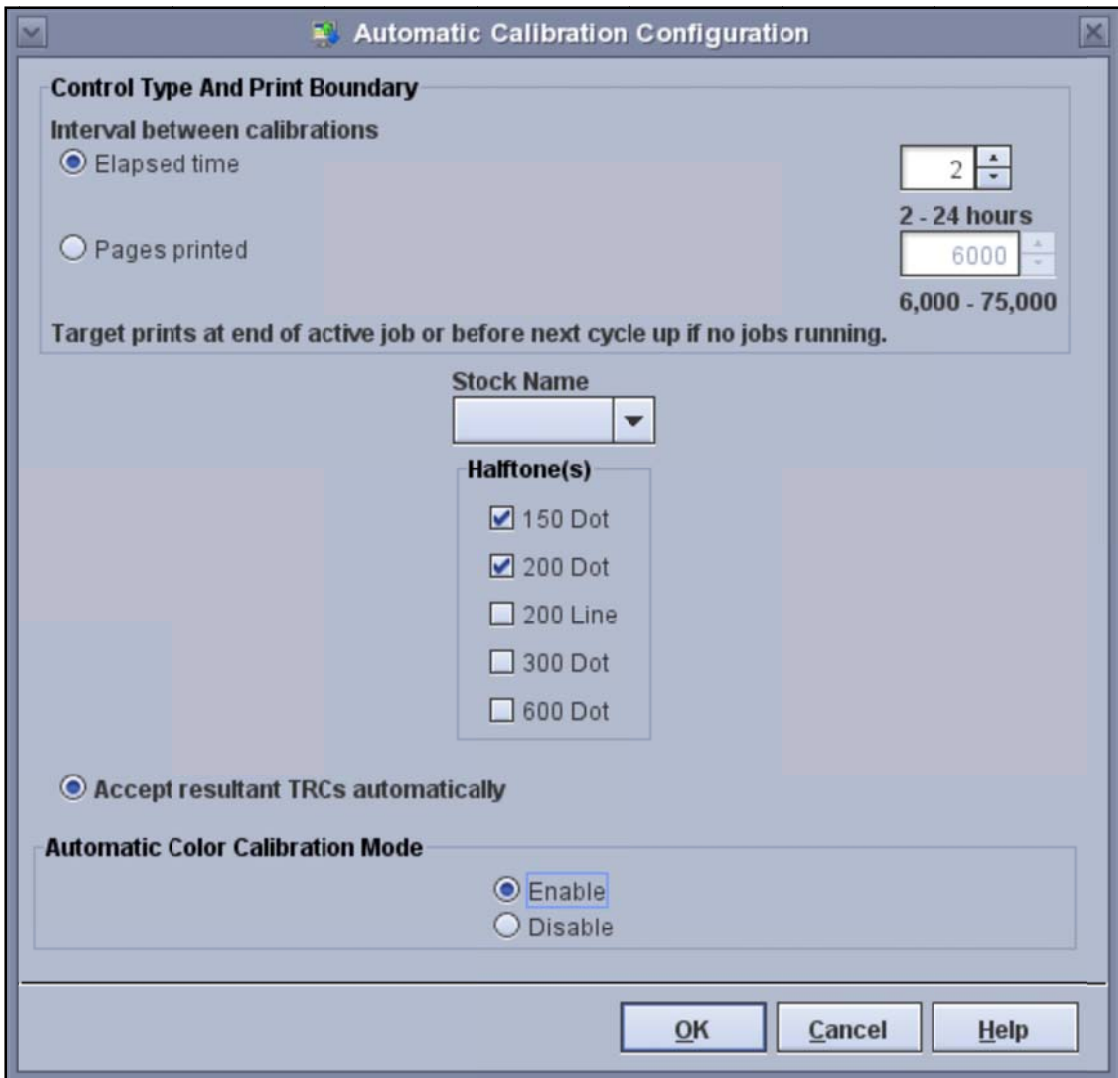


Figure 4: Automatic Calibration Configuration Window

The user can select one or more of the halftones to calibrate. There is no such default selection, but the common setting is set to "200 Dot".

Note: Selecting more than one halftone setting increases time for the calibration operation.

Automatic Color Calibration Mode

Click “Enable” Radio button to run the color Calibration automatically.

Once you select “Enable”, the other selections (OK, Cancel, Help) become accessible.

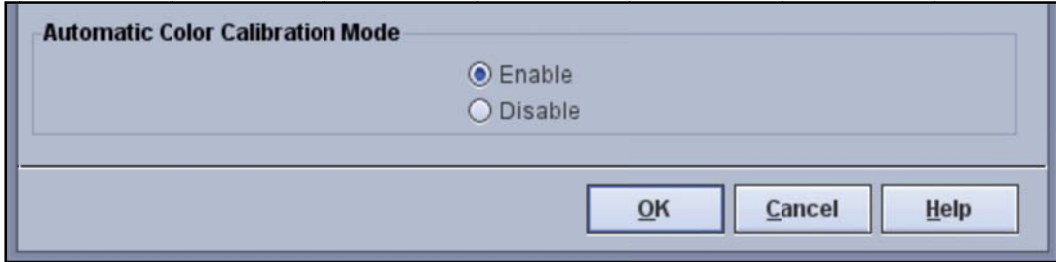


Figure 5: Enabling Automatic Color Calibration Mode

Elapsed Time and Pages Printed

Select either Elapsed Time or Pages Printed to specify the interval between Automatic Calibrations.

Elapsed Time:

Using the “spinner” arrows, adjust the time between calibrations from 2 to 24 hours. This indicates, once the specified time period has elapsed, the system calibrates at the end of the active job or before the next print cycle, if no jobs are running.

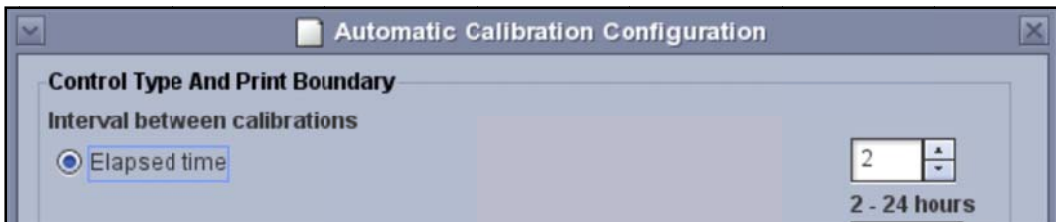


Figure 6: The "Elapsed time" Parameter

A calibration does not occur, even if the specified time period has elapsed, until a job is queued to be printed.

Pages Printed:

Using the “spinner” arrows, the user can adjust the number of pages printed between calibrations from 6,000 to 75,000. This indicates that, once the number of specified pages has been printed, the system calibrates the Press at the end of the active job or before the next print cycle if jobs are not running

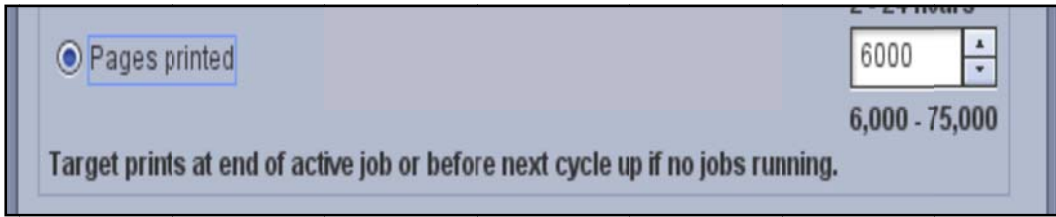


Figure 7: The "Pages printed" parameter

Stock Name

Select the particular stock with the system to calibrate the Press using the pull-down menu. If the specified time or number of printed pages elapses, the automatic calibration begins (if the specified stock is not loaded), then an error occurs.

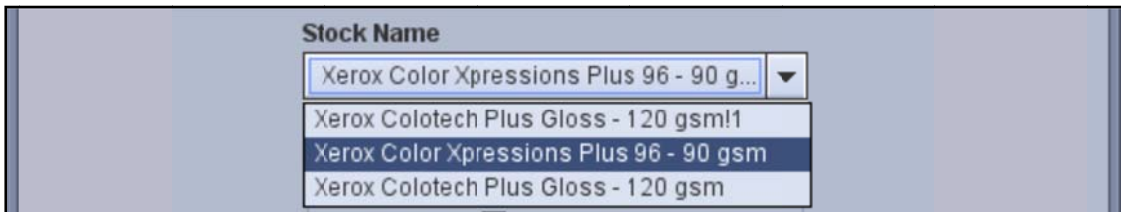


Figure 8: Selecting "Stock Name" parameter

Accept Resultant Tone Reproduction Curves (TRCs) Automatically

When "Accept resultant TRCs automatically" option is selected, it minimizes Operator intervention by accepting the output of the calibration, the Tone Reproduction Curves (TRCs), without further interaction. This is desirable, when a short elapsed period between calibrations is specified.

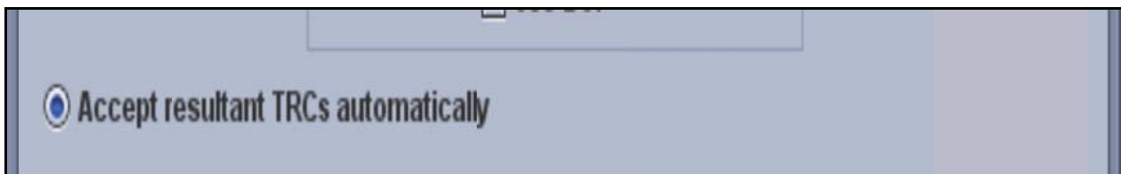


Figure 9: Enabling "Accept resultant TRCs automatically" Parameter

