

# **Xerox NDPS Solution Install Guide**

The installation of the Xerox NDPS Solution for NetWare 5.x, 6.x, and OES 1.0 requires the local workstation to already have installed and configured the latest Novell Client. The Novell Client is available for download at the Novell website at [www.Novell.com](http://www.Novell.com).

The Xerox NDPS Installer allows a user to:

- Install the OES/1.0 iManager Solution  
This solution is enabled for OES 1.0 NetWare servers and servers running NetWare 6.5 SP3 or newer. The solution includes a snap-in for Novell's iManager platform for management of Printer Agents.
- Install the Xerox NDPS Gateway Solution  
This solution is enabled for NetWare 5.x, 6.0, and 6.5 servers. The solution includes a snap-in for Novell's NWAdmin administrative tool. It also includes the customized Xerox Gateway for enhanced communications with Xerox printers.
- Install Xerox Drivers onto any NetWare server  
The Xerox Drivers Install Utility may be used to install Xerox drivers that have been previously downloaded from [www.Xerox.com](http://www.Xerox.com) to one or more NetWare servers.

Note: Options are displayed as appropriate for the selection of servers. For example, the OES/1.0 iManager Solution can only be installed onto NetWare 6.5 SP3 or newer servers and OES 1.0 NetWare servers.

## **Installation Instructions**

Before beginning the Xerox NDPS Installer setup, it is recommended that you first download the appropriate drivers from Xerox.com. To do this, follow the steps below. If you already have the necessary drivers, proceed to the section → Preparing to Install.

1. If you plan to download drivers for more than one operating system (Win 2000/XP, Win NT, Win98) we recommend creating the following hierarchy of folders on your local PC before continuing. This will allow easy distinction of which operating system is associated with each driver.  
    <drive:>\...\XeroxDrivers\  
        Win98  
        WinNT  
        Win2K
2. Go to [www.Xerox.com](http://www.Xerox.com)
3. Select the "Support & Drivers" option from the main toolbar.
4. On the "Support & Drivers" page, select the appropriate product type and family.

5. Once a family has been selected, the product model box will be populated. Locate the model you are looking for and select the “Drivers & Downloads” link and a list of available drivers will be displayed.
6. Select the appropriate driver and ensure that the Note field specifies that the driver is supported in NDPS environment.
7. Save the driver file to the appropriate operating system folder using the folder hierarchy shown above.
8. Execute the driver file thereby extracting the driver files. Each set of files should be created within a product specific folder within the above hierarchy.

For example, the Win2K PS driver for the Phaser 6350 should be extracted to:

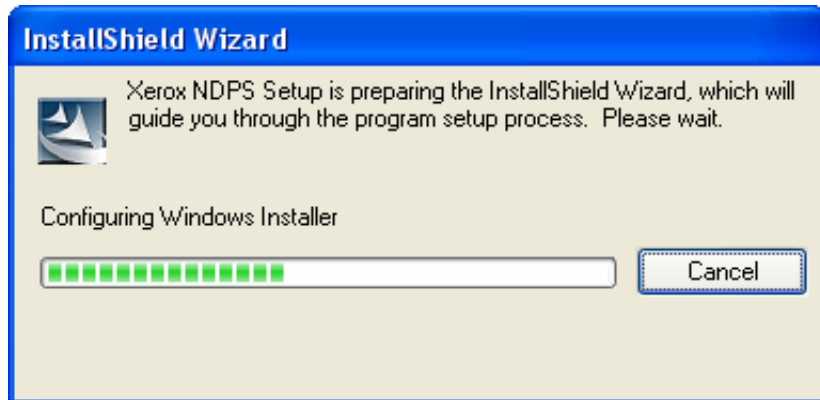
<drive:>\\.\\XeroxDrivers\\Win2k\\Phaser6350PS

For example, the WinNT PCL driver for the WorkCentre Pro 275 should be extracted to:

<drive:>\\.\\XeroxDrivers\\WinNT\\WCP275PCL

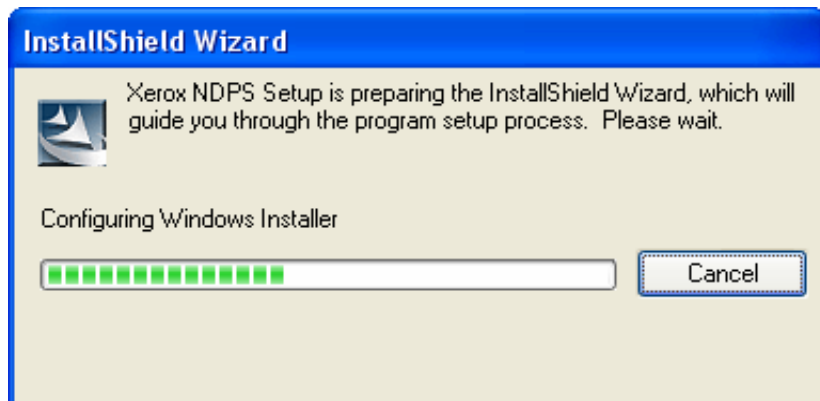
#### → Preparing to Install

1. To begin, double click on the setup.exe icon on your desktop.
2. Xerox NDPS Installer Client setup will prepare the InstallShield Wizard which will guide you through the program setup process.



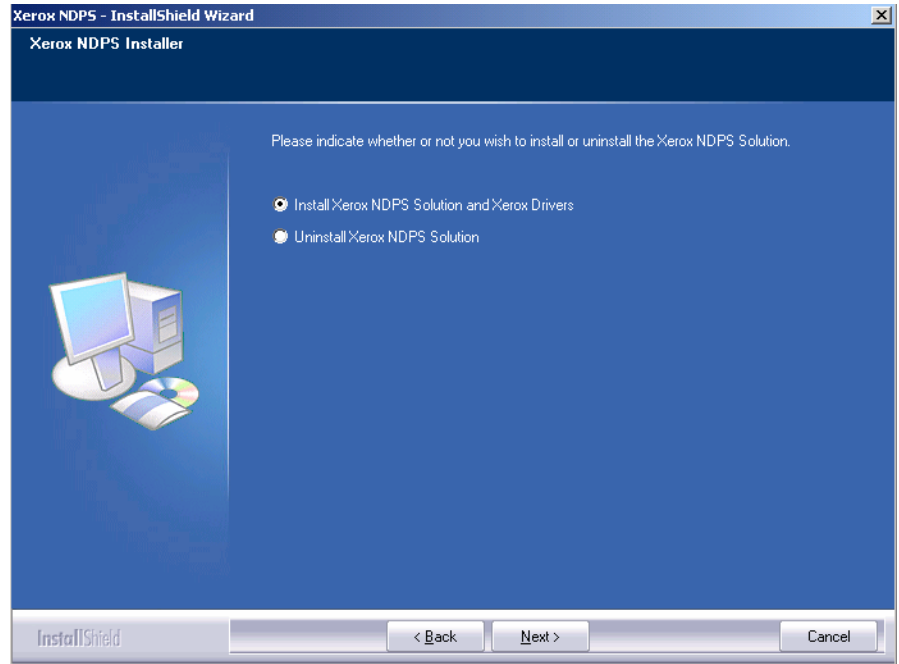
#### → Preparing to Install

1. To begin, double click on the setup.exe icon on your desktop.
2. Xerox NDPS Installer Client setup will prepare the InstallShield Wizard which will guide you through the program setup process.
3. At the Xerox NDPS Install Shield Wizard screen, click “Next” to continue.



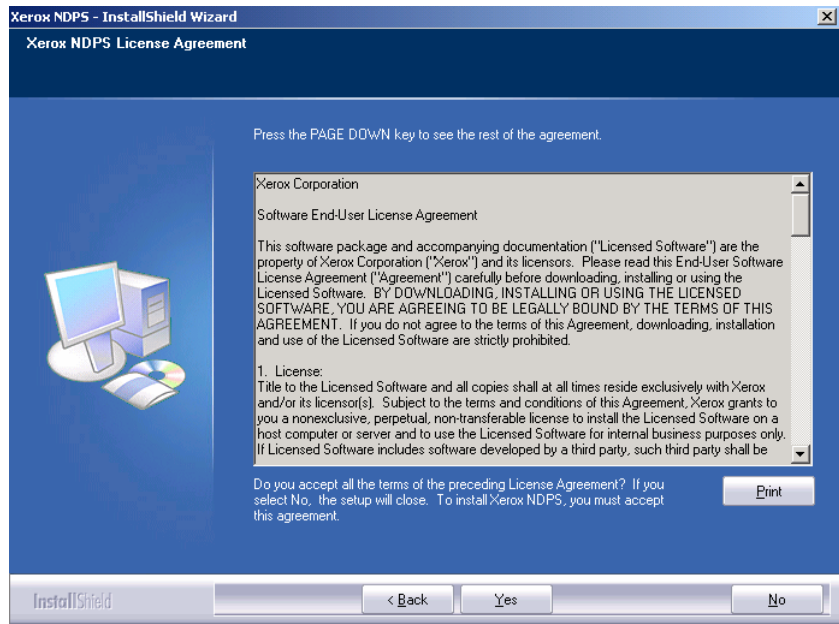
## → Install Option

1. Select the install radio button to begin the installation of the Xerox NDPS Solution and drivers.



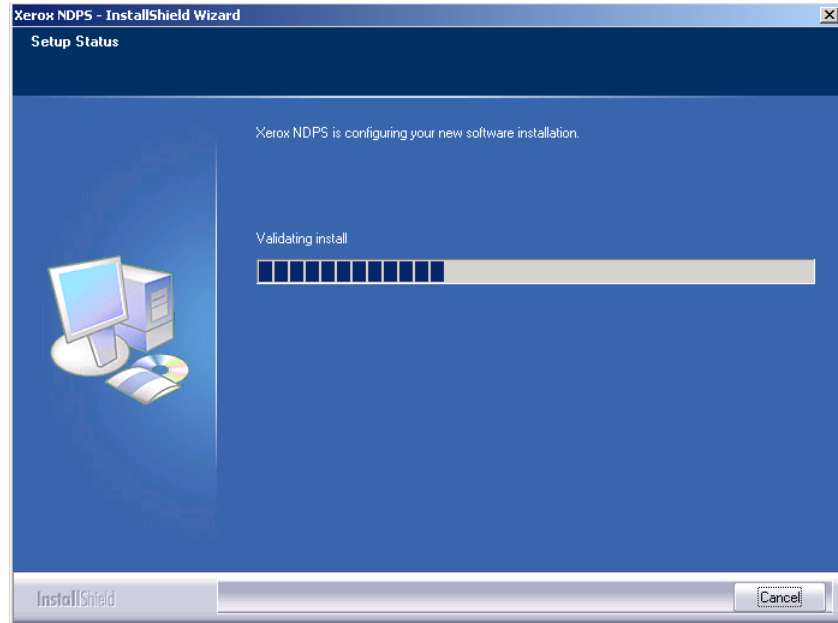
## → License Agreement

1. Read the page carefully
2. Click “yes” to accept the terms in the license agreement



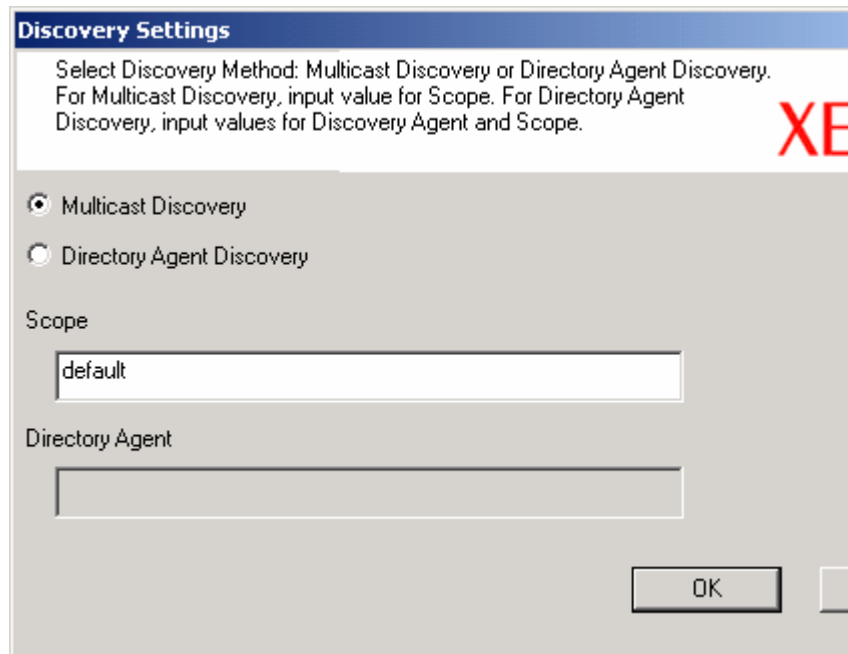
### → Setup Status

1. This screen will appear during the install. No action is required.



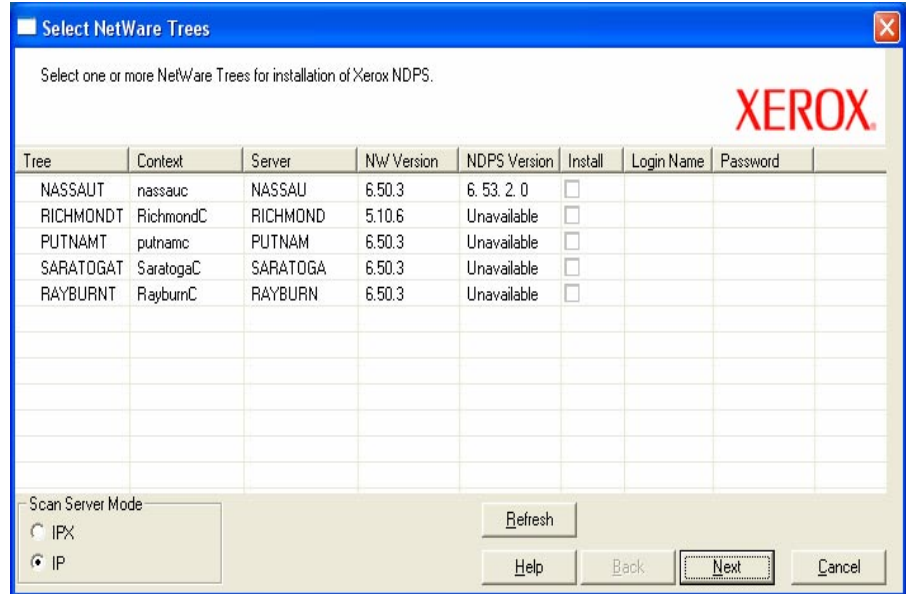
### → Discovery Settings

1. Select option for Multicast Discovery or Directory Agent Discovery and provide Scope and/or Directory Agent. Click “OK” to continue.



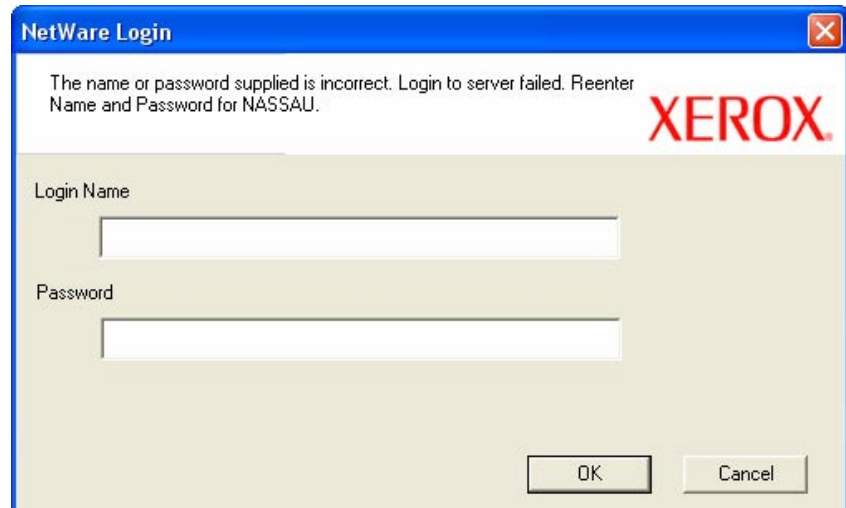
### → Select Netware Trees

1. Select the install checkbox for one or more Netware trees for installation of Xerox NDPS. Enter the Login Name and password for each server in the adjacent cells. If multiple rows are checked, the installation will be performed on each server.
2. Select the radio button of the appropriate protocol for server discovery. **NOTE:** When discovering in IPX mode, you may adjust the scope of the discovery process and consequently the time to discover by adjusting the number of hops from 1 to 6.
3. Click “Next”



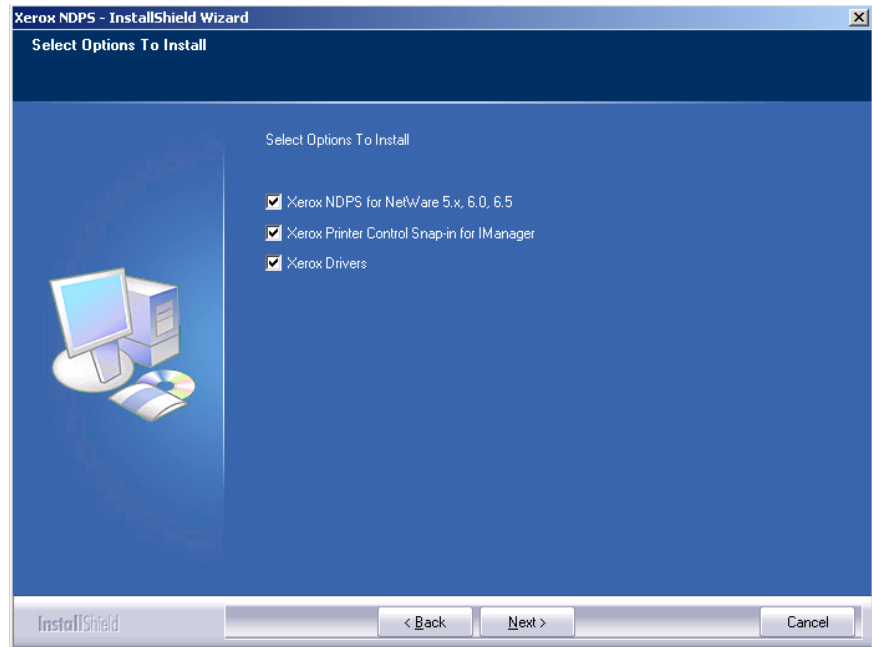
### → Login to the Server

1. If the Login Name &/or Password were omitted or entered incorrectly, you will be prompted to re-enter the information.



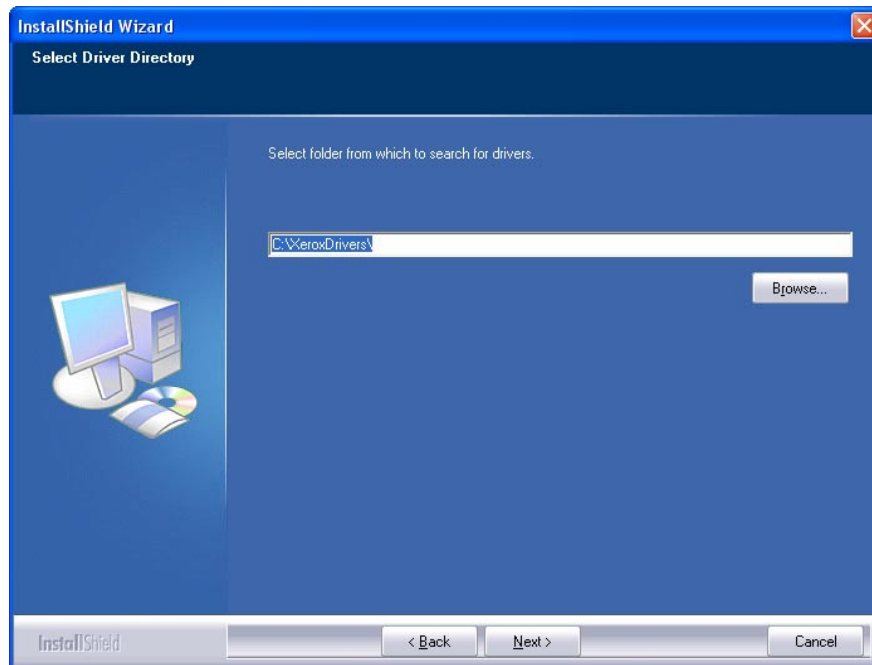
### → Select the Options to Install

1. To install Xerox NDPS including Gateway, select the “Xerox NDPS for NetWare 5.x, 6.0, 6.5” radio button (this supports Netware 5.x and higher).
2. To install the Printer Control Snap-in for IManager, select the second radio button.
3. To add the drivers to the server’s broker, select the “Xerox Drivers” radio button.



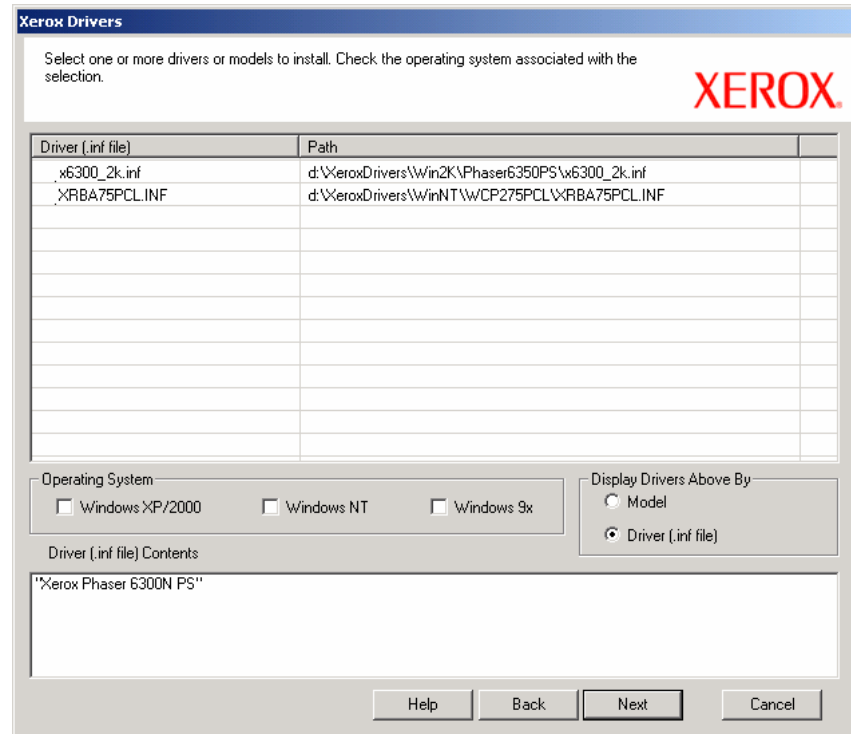
### → Select Driver Directory

1. Click “Browse” to navigate to the root folder of the Xerox drivers on your local system. If following the recommended driver download procedure, select the folder in which the drivers were placed in step 1. (For example, <drive:>\\.\XeroxDrivers\



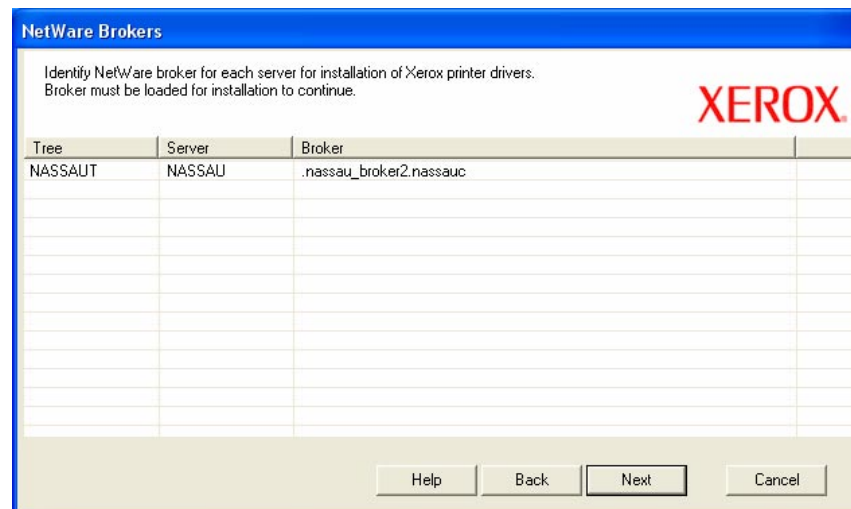
## → Xerox Drivers

1. Click one or more drivers or models to install.
2. Select the correct operating system associated with the driver(s) selection.
3. Repeat Step 2 until all desired drivers for installation, and the appropriate operating systems, have been identified. **NOTE:** Once an operating system has been selected, a green icon is displayed to the left of the filename or model indicating the association.
4. Click “Next”



## → Netware Brokers

1. This screen displays the running broker for each tree selected.
2. To install to a broker that is not currently running, load the broker on the corresponding server and then click “Refresh.”
3. Click “Next”



### → Setup Status

1. This screen will appear during driver installation. No action is required.
2. An information message is displayed asking if the installation log file should be displayed.
3. The message title bar contains the Xerox NDPS and PC Snap In release numbers

**NOTE:** The installation will be performed on each of the selected servers.

### → Installation Complete

1. This screen indicates a successful Xerox NDPS installation.
2. The User will be prompted to either restart the computer now or later.

