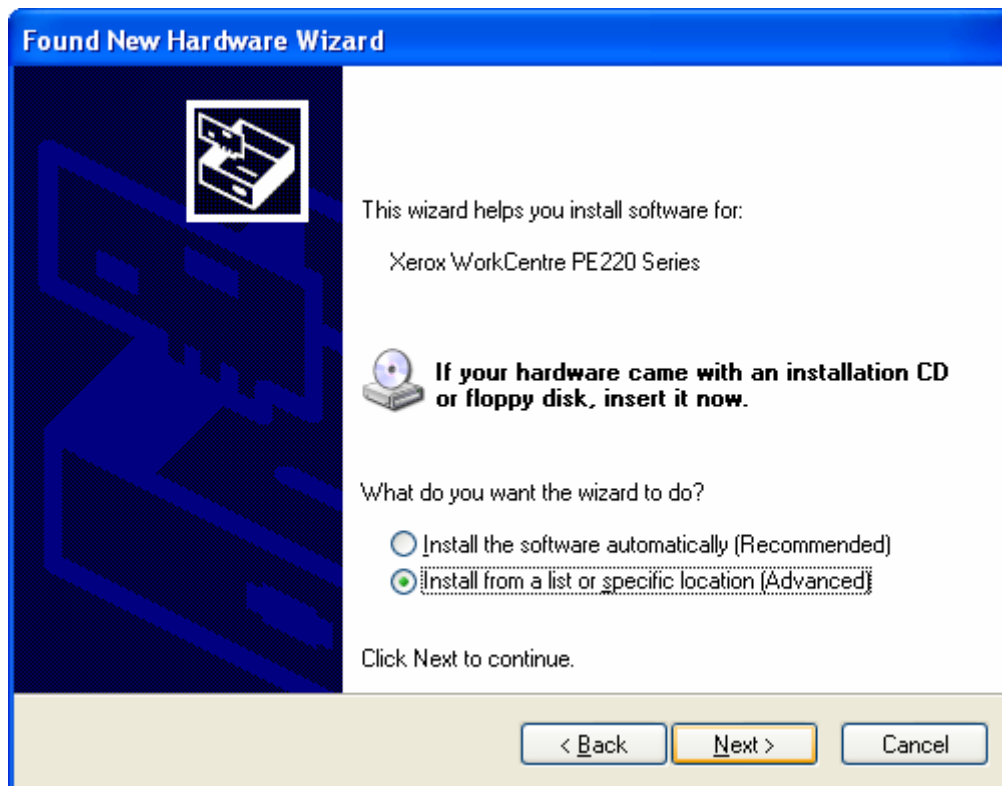


## PE 220 Scan Driver Installation

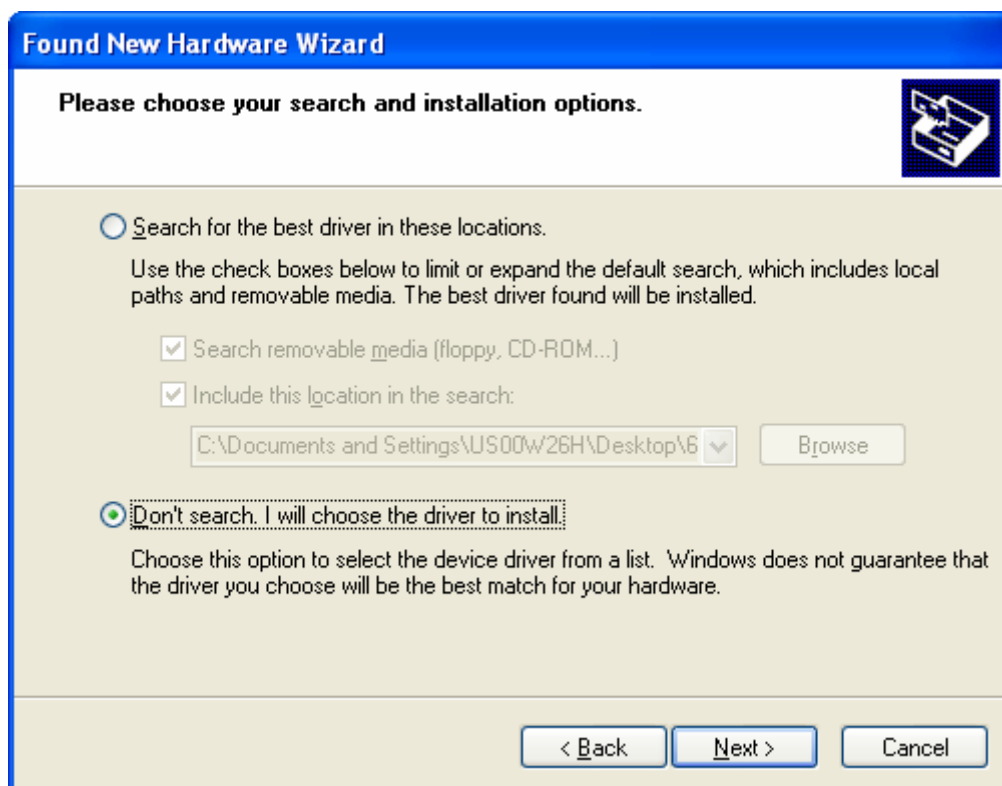
1. Download the PE 220 Scan Driver and extract to a local folder.
2. Connect the USB Cable from the computer to the PE 220. After a minute, the “Found New Hardware” dialog will appear.
3. The Found New Hardware Wizard will open. Select “No, not this time” and click on “Next”.



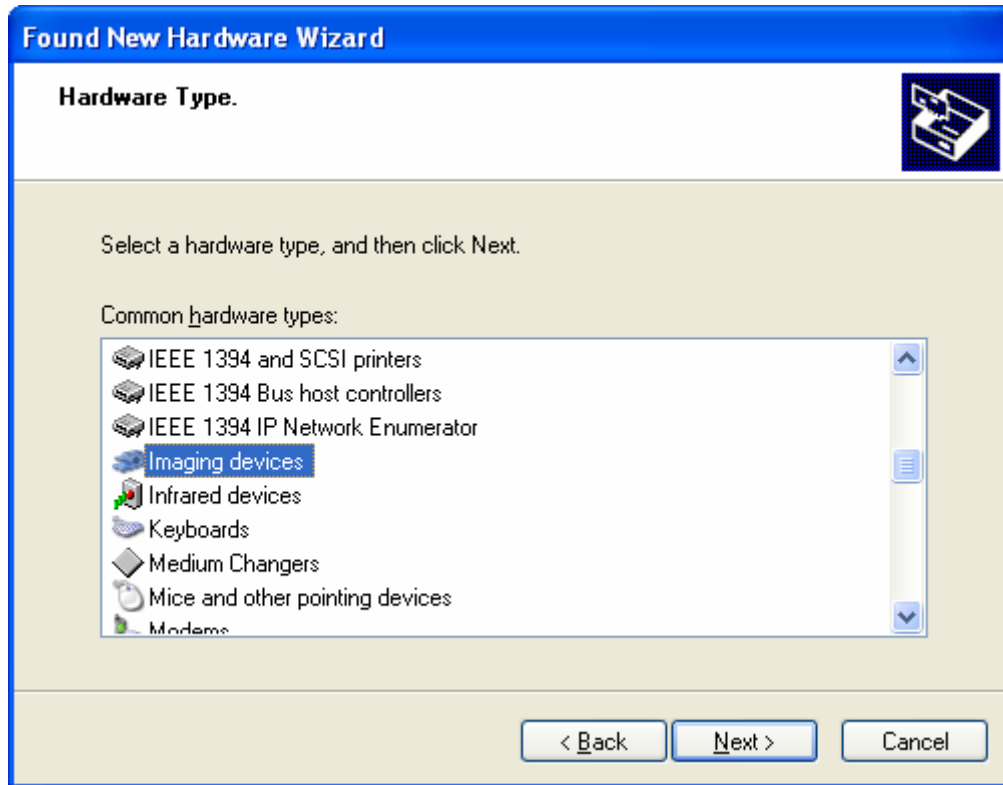
4. Select “Install from a list or specific location (Advanced)” and click “Next”.



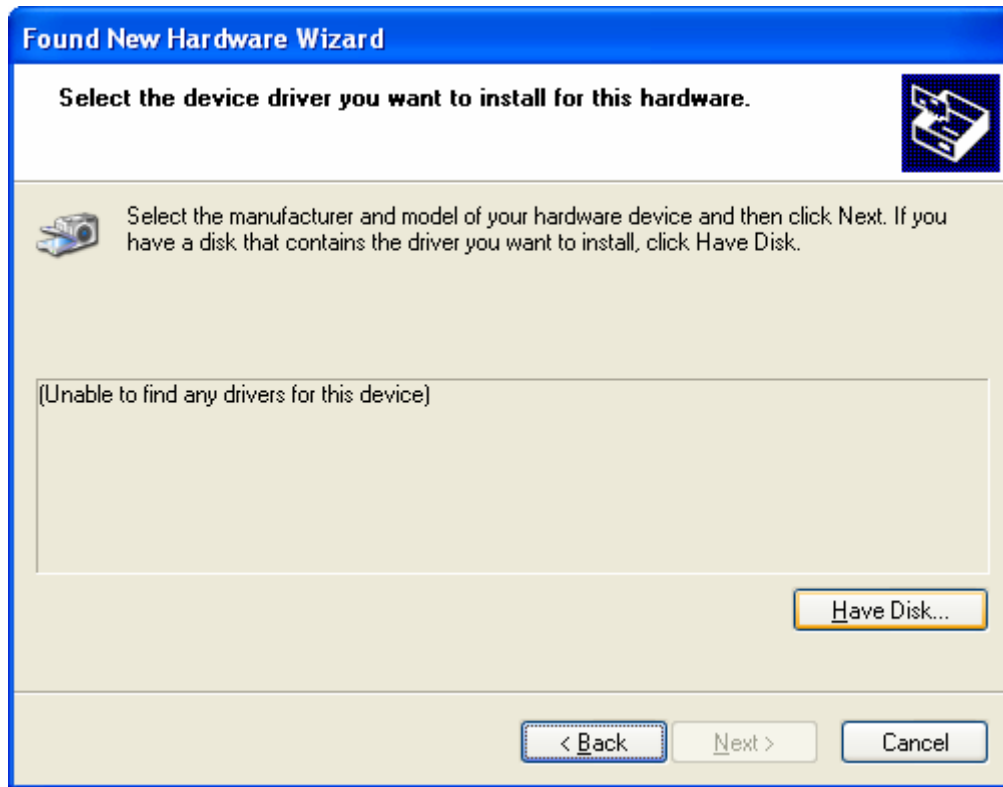
5. Select “Don’t search, I will choose the driver to install” and click “Next”



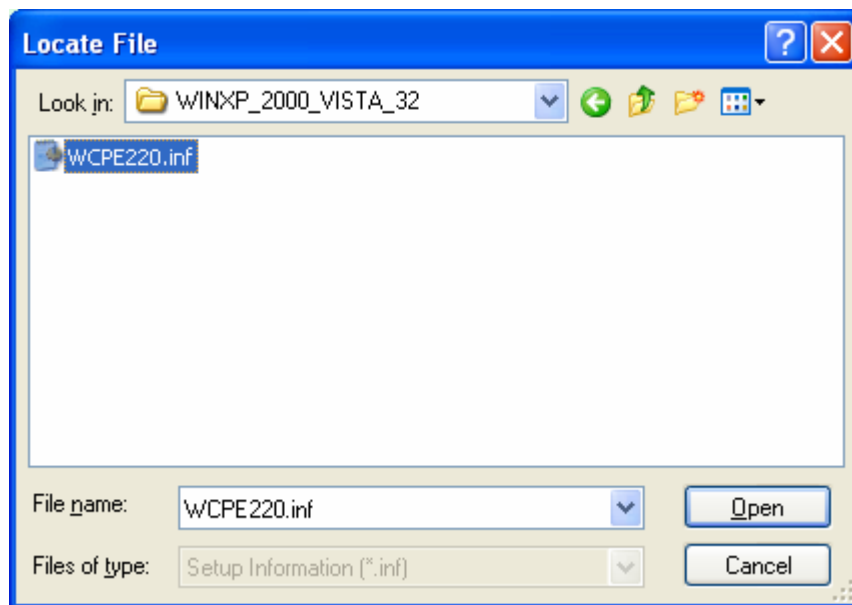
6. Select “Imaging devices” and click “Next”.



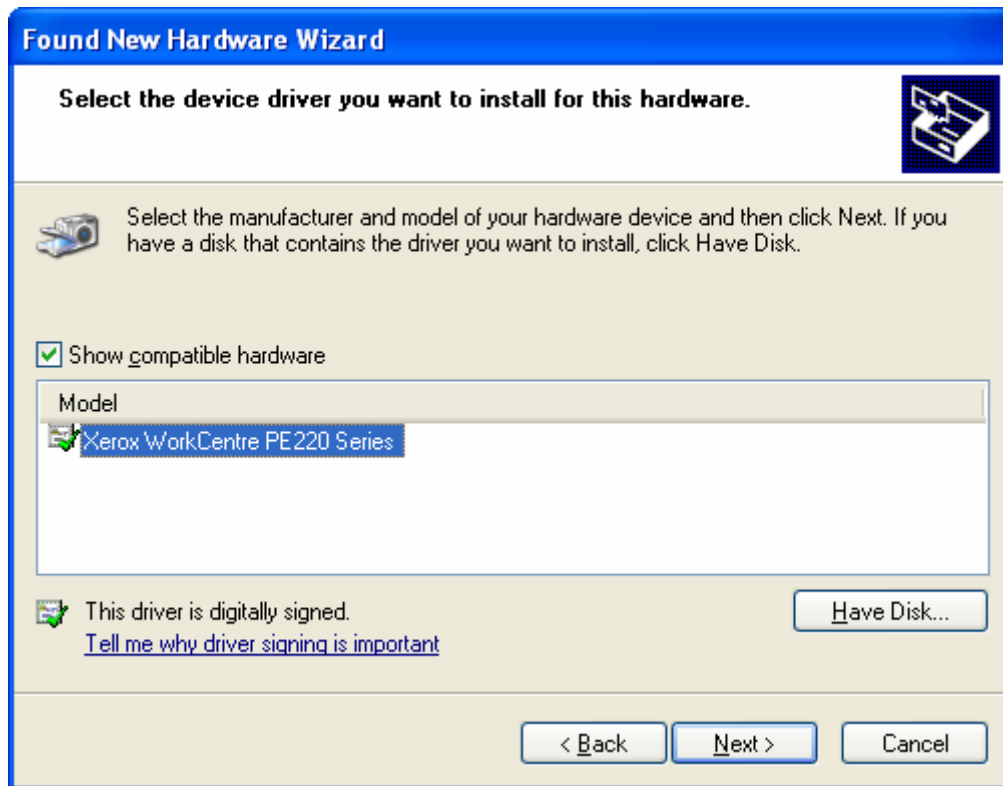
7. Click on “Have Disk” and click on “Next”



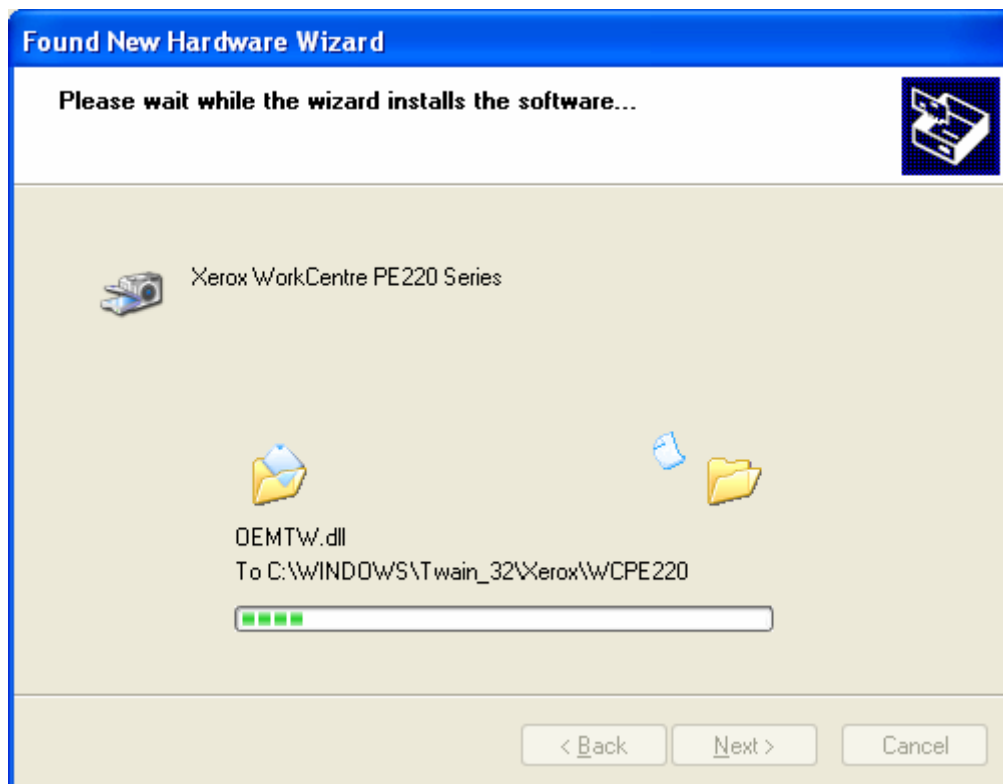
8. Browse to the folder containing the PE 220 Scan driver. Select the WCPE220.inf file and click "Open."



9. The screen below will display. Select "Next"



10. The installation files are copied to the appropriate directories.



11. Select “Finish” to complete the installation.

