

Xerox 4590 Copier/Printer
Xerox 4110 Copier/Printer
PostScript
User Guide



Xerox Corporation
Global Knowledge & Language Services
800 Phillips Road
Building 218
Webster, New York 14580

©Copyright 2008 by Xerox Corporation. All Rights Reserved.

Copyright protection claimed includes all forms and matters of copyrighted material and information now allowed by statutory or judicial law or hereinafter granted, including without limitation, material generated from the software programs that are displayed on the screen such as styles, templates, icons, screen displays, looks, etc.

Xerox[®] and Xerox product names and product numbers mentioned in this publication are trademarks of XEROX CORPORATION. Other company brands and product names may be trademarks or registered trademarks of the respective companies and are also acknowledged.

Microsoft, MS-DOS, Windows, Windows NT, Microsoft Network, and Windows Server are either trademarks or registered trademarks of Microsoft Corporation in the United States and/or other countries.

Novell, NetWare, IntranetWare and NDS are registered trademarks of Novell, Inc. in the United States and other countries.

Adobe, Acrobat, PostScript, PostScript3, and PostScript Logo are trademarks of Adobe Systems Incorporated.

Apple, AppleTalk, EtherTalk, LocalTalk, Macintosh, MacOS and TrueType are trademarks of Apple Computer, Inc., registered in the U.S. and other countries.

HP, HPGL, HPGL/2, and HP-UX are registered trademarks of Hewlett-Packard Corporation.

All product/brand names are trademarks or registered trademarks of the respective holders.

Printed in the USA

Table of contents

1. Before using the machine	1-1
Terminology	1-1
Orientation	1-1
Long Edge Feed (LEF)	1-1
Short Edge Feed (SEF)	1-2
Safety notices	1-3
Electrical safety	1-3
Disconnect device	1-4
Laser safety	1-5
North America	1-5
Europe (EU) and other markets	1-6
Safety standards	1-6
North America	1-6
Europe (EU) and other markets	1-6
Maintenance safety	1-7
Operational safety	1-7
Ozone safety	1-8
Notices	1-9
Radio frequency emissions	1-9
FCC in the USA	1-9
In Canada (ICES-003)	1-9
Regulatory information for RFID (EU)	1-10
Regulatory information for RFID (US)	1-10
Safety extra low voltage approval	1-10
Certifications in Europe	1-11
It's illegal in the USA	1-12
It's illegal in Canada	1-15
Environmental notices for the USA	1-16
Product recycling and disposal	1-17
North America	1-17
European union	1-17
Other countries	1-17
Related information sources	1-18
Customer documentation updates	1-18

2. Windows Me	2-1
About the software	2-1
Bundled software	2-1
Hardware/software requirements	2-2
The Xerox 4110/4590 PS Printer Driver	2-2
Installation procedure	2-2
If you click Disagree in the License Agreement	2-7
Printer Driver properties	2-8
Configuration tab.	2-8
Options tab	2-13
Output Settings tab	2-14
How to use help	2-18
 3. Windows NT 4.0	 3-1
About the software	3-1
Bundled software	3-1
Hardware/software requirements	3-2
The Xerox 4110/4590 PS Printer Driver	3-2
Installation procedure	3-2
If you click Disagree in the License Agreement	3-8
Device options and print settings	3-8
Device settings tab	3-9
Configuration tab.	3-11
Settings.	3-12
Detailed Settings tab.	3-13
Settings.	3-13
Paper/Output tab.	3-16
Settings.	3-17
Layout tab.	3-22
Settings.	3-22
 4. Windows 2000/XP and Windows Server 2003	 4-1
About the software	4-1
Bundled software	4-1
Hardware/software requirements	4-2
The Xerox 4110/4590 PS Printer Driver	4-2
Installation Procedure	4-3
Device options and print settings	4-10
Device Settings tab.	4-11
Configuration tab.	4-13

Detailed Settings tab	4-15
Paper/Output tab	4-18
Layout tab	4-24
5. Macintosh computers	5-1
<hr/>	
About the software	5-1
Bundled software	5-1
Hardware/software requirements	5-2
AdobePS Printer Driver	5-3
Installation procedure (Mac OS 9.x or earlier)	5-3
Setting the Printer Driver (Mac OS 9.x or earlier)	5-5
Installation procedure (Mac OS X)	5-7
Adding a Printer (Mac OS X)	5-8
Printer options	5-11
For Mac OS 9.x and earlier	5-11
For Mac OS X	5-12
Printer features	5-13
For Mac OS 9.x and earlier	5-13
For Mac OS X	5-14
Job Type (Mac OS X only)	5-18
Settings	5-19
Job Accounting (Mac OS X only)	5-20
Settings	5-22
Installing screen fonts	5-23
6. Barcode Settings	6-1
<hr/>	
About barcode settings	6-1
Font types and character sets	6-2
Sample program and output results	6-2
Character set tables	6-3
JAN character set table	6-3
Code 39 character set table	6-4
NW7 character set table	6-5
Code 128 character set table	6-6
ITF (Interleaved 2 of 5) character set table	6-10
Customer barcode character set table	6-12
Barcode sizes	6-13
A. Appendix	A-1
<hr/>	
Cautions and limitations	A-1

About the driver	A-1
Troubleshooting	A-1
Print operation	A-1

Index	I-1
--------------	------------

1. Before using the machine

Thank you for choosing the Xerox 4110/4590 Copier/Printer. This guide describes procedures for PostScript® Driver Library software, and the preparation to use them for printing. Before using the product, read this guide carefully and make sure that you are using it correctly.

The descriptions in this guide assume that users are familiar with their computer environments (either the Microsoft® Windows® operating system or the Macintosh™) and with the procedures for using the Xerox 4110/4590 Copier/Printer.

Refer to this guide as necessary to maximize the usefulness and performance of this product.

Terminology

In this guide you will find that some terms are used interchangeably:

- Paper is synonymous with media.
- Document is synonymous with original.
- Xerox 4110/4590 Copier/Printer is synonymous with the machine.

Orientation

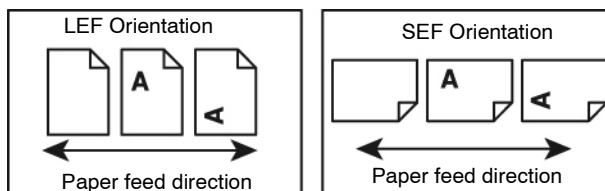
Orientation is used to mean the direction of images on the page. When the image is upright, the paper (or other media) can be either long edge feed or short edge feed.

Long Edge Feed (LEF)

When loading documents long edge feed into the document feeder, load with one of the long edges facing into the document feeder. The short edges appear at the top and bottom of the paper, facing the front and back of the document feeder. When loading paper long edge feed into a paper tray, place the paper with one of the long edges on the left-hand side and one of the short edges toward the front of the tray.

Short Edge Feed (SEF)

When loading documents short edge feed into the document feeder, load with one of the short edges facing into the document feeder. The long edges appear on the top and bottom of the paper, facing the front and back of the document feeder. When loading paper short edge feed into a paper tray, place the paper with one of the short edges on the left-hand side and one of the long edges toward the front of the tray.



Safety notices

This Xerox product and the recommended supplies are designed and tested to meet strict safety requirements. These include safety agency approval and compliance to established environmental standards. Please read the following instructions carefully before operating the product, and refer to them as needed to ensure the continued safe operation of your product.



KEY POINT: The safety testing and performance of this product have been verified using Xerox materials only.



WARNING: Any unauthorized alteration, which may include the addition of new functions or connection of external devices, may impact the product certification. Please contact your authorized local dealer for more information.

Electrical safety

- Use only the power cord supplied with this equipment.
- Plug the power cord directly into a correctly grounded electrical outlet. Do not use an extension cord. If you do not know whether or not an outlet is grounded, consult a qualified electrician.
- Do not use a ground adapter plug to connect this equipment to an electrical outlet that lacks a ground connection terminal.



WARNING: You may incur a severe electrical shock if the outlet is not grounded correctly.

- Do not place the press where people may step or trip on the power cord. Do not place objects on the power cord.
- Do not override or disable electrical or mechanical interlocks.
- Do not obstruct the ventilation openings. These openings prevent overheating of the machine.



WARNING: Never push objects of any kind into slots or openings on this equipment. Making a contact with a voltage point or shorting out a part may result in fire or electrical shock.

If any of the following conditions occur, immediately switch off the power to the machine and disconnect the power cord from the electrical outlet. Call an authorized Xerox service representative to correct the problem.

- The machine emits unusual noises or odors.
- The power cord is damaged or frayed.
- A wall panel circuit breaker, fuse, or other safety device is tripped.
- Liquid is spilled into the press.
- The machine is exposed to water.
- Any part of the machine is damaged.

Disconnect device

The power cable is the disconnect device for this equipment and is attached to the back of the machine as a plug-in device. To remove all electrical power from the machine, disconnect the power cable from the electrical outlet.



WARNING: This product must be connected to a protective earth current.

Laser safety

North America

This product complies with safety standards and is certified as a Class 1 Laser product under the Center for Devices and Radiological Health (CDRH) of the United States Food and Drug Administration (FDA) implemented regulations for laser products. This product complies with FDA 21 CFR 1940.10 and 1040.11 except for deviations pursuant to Laser Notice No. 50, dated July 26, 2001. These regulations apply to laser products marketed in the United States. The label on the machine indicates compliance with CDRH regulations and must be attached to laser products marketed in the United States. This product does not emit hazardous laser radiation.



CAUTION: Use of controls or adjustments or performance of procedures other than those specified herein may result in hazardous exposure of laser light.

Since radiation emitted inside this product is completely confined within the protective housing and external covers, the laser beam cannot escape from the machine during any phase of the user operation.

This product contains laser warning labels. These labels are intended for use by the Xerox Service Representative and are placed on or near panels or shields that require special tools for removal. Do not remove any of the panels. There are no operator serviceable areas in these covers.

Europe (EU) and other markets

This product complies with IEC's safety standard 60825-1 (Edition 1.2) issued August 2001.

The equipment complies with laser product performance standards set by governmental, national, and international agencies as a Class 1 Laser Product. It does not emit hazardous radiation as the beam is totally enclosed during all phases of customer operation and maintenance.



CAUTION: Use of controls or adjustments or performance of procedures other than those specified herein may result in hazardous radiation exposure.

This product contains laser warning labels. These labels are intended for use by the Xerox Service Representative and are placed on or near panels or shields that require special tools for removal. Do not remove any of the panels. There are no operator serviceable areas inside these covers.

If you need additional safety information concerning the product or Xerox supplied materials, you may call the following number:

+44 (0) 1707 353434

Safety standards

North America

This Xerox product is safety certified by Underwriters Laboratories Incorporated to Standards UL60950-1 (first edition), and CSA International CAN/CSA C22.2 No. 60950-1-03 (First Edition).

Europe (EU) and other markets

This Xerox product is safety certified by Underwriters Laboratories Incorporated to publication IEC60950-1 (2001) First Edition.

Maintenance safety

- Do not attempt any maintenance procedure that is not specifically described in the documentation supplied with your product.
- Do not use aerosol cleaners. The use of supplies that are not approved may cause poor performance of the press and could create a dangerous condition.
- Use the supplies and cleaning materials only as directed in this manual. Keep all materials out of the reach of children.
- Do not remove the covers or guards that are fastened with screws. There are no parts behind these covers that you can maintain or service.

Do not perform any maintenance procedures unless you have been trained to do them by a Xerox representative, or unless a procedure is specifically described in one of the manuals included with your press.

Operational safety

Your Xerox equipment and supplies were designed and tested to meet strict safety requirements. These include safety agency examination, approval, and compliance with established environmental standards.

Your attention to the following safety guidelines will help ensure the continued safe operation of your product:

- Use the materials and supplies specifically designed for your product. The use of unsuitable materials may result in poor performance of the machine and possibly a hazardous situation.
- Follow all warnings and instructions that are marked on or supplied with the machine.
- Place the machine in a room that provides adequate space for ventilation and servicing.
- Place the machine on a level, solid surface (not on a thick pile carpet) that has adequate strength to support the weight of the machine.
- Do not attempt to move the machine. A leveling device that was lowered when your machine was installed may damage the carpet or floor.
- Do not set up the machine near a heat source.
- Do not set up the machine in direct sunlight.

- Do not set up the machine in line with the cold air flow from an air conditioning system.
- Do not place containers of coffee or other liquid on the machine.
- Do not block or cover the slots and openings on the machine.
- Do not attempt to override any electrical or mechanical interlock devices.



WARNING: Be careful when working in areas identified with this warning symbol. These areas may be very hot and should not be touched.

If you need any additional safety information concerning the machine or materials, contact your Xerox representative.

Ozone safety

This product produces ozone during normal operation. The ozone is heavier than air, and the quantity is dependent on print volume. Providing the correct environmental parameters, as specified in the Xerox installation procedures, ensures that concentration levels meet safe limits.

If you need additional information about ozone, request the Xerox publication, *OZONE* by calling 1-800-828-6571 in the USA. For a French language version, call 1-800-828-6571 in the USA, then press 2.

Notices

Radio frequency emissions

FCC in the USA

This equipment has been tested and found to comply with the limits for a Class A digital device, pursuant to Part 15 of the Federal Communications Commission (FCC) Rules. These limits are designed to provide reasonable protection against harmful interference when the equipment is operated in a commercial environment. This equipment generates, uses, and can radiate radio frequency energy and, if not installed and used in accordance with the instruction manual, may cause harmful interference to radio communications. Operation of this equipment in a residential area is likely to cause harmful interference in which case the user will be required to correct the interference at his/her own expense.

Changes or modifications to this equipment not specifically approved by the Xerox Corporation may void the user's authority to operate this equipment.



WARNING: Shielded cables must be used with this equipment to maintain compliance with FCC regulations.

In Canada (ICES-003)

This Class "A" digital apparatus complies with Canadian ICES-003.

Cet appareil numérique de la classe "A" est conforme à la norme NMB-003 du Canada.

Regulatory information for RFID (EU)

This product generates 13.56 MHz using an Inductive Loop System as a Radio Frequency Identification system Device (RFID). This system is certified in compliance with European Council Directive 99/5/EC and applicable local laws or regulations as applicable.

Regulatory information for RFID (US)

This product generates 13.56 MHz using an Inductive Loop System as a Radio Frequency Identification system Device (RFID). This device meets the FCC Part 15C Unlicensed Modular Transmitter Approval requirements set forth in Public Notice DSA00-1407.

Safety extra low voltage approval

This Xerox product is in compliance with various governmental agencies and national safety regulations. All system ports meet the Safety Extra Low Voltage (SELV) circuits for connection to customer-owned devices and networks. Additions of customer-owned or third-party accessories that are attached to the press must meet or exceed the requirements previously listed. All modules that require external connection must be installed per the installation procedure.

Certifications in Europe



The CE marking that is applied to this product symbolizes Xerox Declaration of Conformity with the following applicable Directives of the European Union as of the dates indicated:

July 22, 1993: Council Directive 73/23/EEC amended by Council Directive 93/68/EEC, approximation of the laws of the member states related to low voltage equipment.

July 22, 1993: Council Directive 89/336/EEC amended by Council Directive 93/68/EEC, approximation of the laws of the member states related to electromagnetic compatibility.

March 9, 1999 Council Directive 99/5/EC on radio equipment and telecommunications terminal equipment and the mutual recognition of their conformity.

A full declaration, defining the relevant directives and referenced standards, can be obtained from your Xerox Limited representative or by contacting:

Environment, Health and Safety
Xerox
Bessemer Road
Welwyn Garden City
Herts
AL7 1BU
England
Tel Number +44 (0) 1707 353434



WARNING: This system is certified manufactured and tested in compliance with strict safety and radio frequency interference regulations. Any unauthorized alteration which includes the addition of new functions or the connection of external devices may impact this certification. Please contact your local Xerox Limited representative for a list of approved accessories.



WARNING: In order to allow this equipment to operate in proximity to Industrial, Scientific, and Medical (ISM) equipment, the external radiation from the ISM equipment may have limited or special mitigation measures taken.



WARNING: This is a Class A product in a domestic environment. This product may cause radio frequency interference in which case the user may be required to take adequate measures.



WARNING: Shielded cables must be used with this equipment to maintain compliance with Council Directive 89/336/EEC.

It's illegal in the USA

Congress, by statute, has forbidden the reproduction of the following subjects under certain circumstances. Penalties of fine or imprisonment may be imposed on those guilty of making such reproductions.

1. Obligations or Securities of the United States Government, such as:

Certificates of Indebtedness	National Bank Currency
Coupons from Bonds	Federal Reserve Bank Notes
Silver Certificates	Gold Certificates
United States Bonds	Treasury Notes
Federal Reserve Notes	Fractional Notes
Certificates of Deposit	Paper Money
Bonds and Obligations of certain agencies of the government, such as FHA, etc.	

Bonds. (U.S. Savings Bonds may be photographed only for publicity purposes in connection with the campaign for the sale of such bonds.)

Internal Revenue Stamps. (If it is necessary to reproduce a legal document on which there is a canceled revenue stamp, this may be done provided the reproduction of the document is performed for lawful purposes.)

Postage Stamps, canceled or uncanceled. (For philatelic purposes, Postage Stamps may be photographed, provided the reproduction is in black and white and is less than 75% or more than 150% of the linear dimensions of the original.)

Postal Money Orders.

Bills, Checks, or Drafts of money drawn by or upon authorized officers of the United States.

Stamps and other representatives of value, of whatever denomination, which have been or may be issued under any Act of Congress.

2. Adjusted Compensation Certificates for Veterans of the World Wars.
3. Obligations or Securities of any Foreign Government, Bank, or Corporation.
4. Copyrighted material, unless permission of the copyright owner has been obtained or the reproduction falls within the "fair use" or library reproduction rights provisions of the copyright law. Further information of these provisions may be obtained from the Copyright Office, Library of Congress, Washington, D.C. 20559. Ask for Circular R21.
5. Certificates of Citizenship or Naturalization. (Foreign Naturalization Certificates may be photographed.)

6. Passports. (Foreign Passports may be photographed.)
7. Immigration Papers.
8. Draft Registration Cards.
9. Selective Service Induction Papers that bear any of the following Registrant's information:

Earnings or Income	Dependency Status
Court Record	Previous military service
Physical or mental condition	

Exception: United States military discharge certificates may be photographed.
10. Badges, Identification Cards, Passes, or Insignia carried by military personnel, or by members of the various Federal Departments, such as FBI, Treasury, etc. (unless photograph is ordered by the head of such department or bureau.)

Reproducing the following is also prohibited in certain states:
Automobile Licenses - Drivers' Licenses - Automobile
Certificates of Title.

The above list is not all inclusive, and no liability is assumed for its completeness or accuracy. In case of doubt, consult your attorney.

It's illegal in Canada

Parliament, by statute, has forbidden the reproduction of the following subjects under certain circumstances. Penalties of fines or imprisonment may be imposed on those guilty of making such copies.

1. Current bank notes or current paper money.
2. Obligations or securities of a government or bank.
3. Exchequer bill paper or revenue paper.
4. The public seal of Canada or of a province, or the seal of a public body or authority in Canada, or of a court of law.
5. Proclamations, orders, regulations or appointments, or notices thereof (with intent to falsely cause same to purport to have been printed by the Queen's Printer for Canada, or the equivalent printer for a province).
6. Marks, brands, seals, wrappers or designs used by or on behalf of the Government of Canada or of a province, the government of a state other than Canada or a department, board, Commission or agency established by the Government of Canada or of a province or of a government of a state other than Canada.
7. Impressed or adhesive stamps used for the purpose of revenue by the Government of Canada or of a province or by the government of a state other than Canada.
8. Documents, registers or records kept by public officials charged with the duty of making or issuing certified copies thereof, where the reproduction falsely purports to be a certified copy thereof.
9. Copyrighted material or trademarks of any manner or kind without the consent of the copyright or trademark owner.

The above list is provided for your convenience and assistance, but it is not all inclusive, and no liability is assumed for its completeness or accuracy. In case of doubt, consult your solicitor.

Environmental notices for the USA



As an ENERGY STAR® partner, Xerox Corporation has determined that this product meets the ENERGY STAR guidelines for energy efficiency.

The ENERGY STAR and ENERGY STAR MARK are registered United States trademarks.

The ENERGY STAR Office Equipment Program is a team effort between U.S., European Union and Japanese governments, and the office equipment industry to promote energy-efficient copiers, printers, fax, multifunction machines, personal computers, and monitors. Reducing product energy consumption helps combat smog, acid rain, and long-term changes to the climate by decreasing the emissions that result from generating electricity.

Xerox ENERGY STAR equipment is preset at the factory. Your machine will be delivered with the timer for switching to Low Power Mode from the last copy/print output, set at 15 minutes. The time to switch to power save (auto off/sleep) mode is set at 60 minutes from the last copy/print output. A more detailed description of the Power Saver Mode, together with instructions on changing the default time to suit your work pattern, can be found in the System Administration Guide, System Timers, Power Saver section.

Product recycling and disposal

If you are managing the disposal of your Xerox product, please note that the product contains lead, mercury, perchlorate, and other materials whose disposal may be regulated due to environmental considerations. The presence of lead and perchlorate is fully consistent with global regulations applicable at the time that the product was placed on the market.

North America

Xerox operates a worldwide equipment take-back and reuse/recycle program. Contact your Xerox sales representative (1-800-ASK-XEROX) to determine whether this Xerox product is part of the program. For more information about Xerox environmental programs, visit www.xerox.com/environment.

For recycling and disposal information, contact your local authorities. In the United States, you may also refer to the Electronic Industries Alliance web site: www.eiae.org.

Perchlorate Material

This product may contain one or more Perchlorate-containing devices, such as batteries. Special handling may apply, please see www.dtsc.ca.gov/hazardouswaste/perchlorate.

If your product is not part of the Xerox program and you are managing its disposal, please follow the instructions provided in the above paragraph.

European union



Application of this symbol on your equipment is confirmation that you must dispose of this equipment in compliance with agreed national procedures.

In accordance with European legislation end-of-life electrical and electronic equipment subject to disposal must be managed within agreed procedures.

Prior to disposal, contact your local dealer or Xerox representative for end-of-life take-back information.

Other countries

Please contact your local waste authorities and request disposal guidance.

Related information sources

This section describes the guides provided with this machine.

- **User Guide:** This guide describes all the necessary steps for copy/print/scan jobs, clearing paper jams, daily care, and safety information.
- **Administrator Guide:** System Administrators use this guide to set up the machine defaults/settings and the network environment.
- The On-line Help systems (Print Drivers and CentreWare Utilities)
- CentreWare Utilities Documentation (HTML)



NOTE: Please note that the screens shown in this user guide apply to a fully configured machine and therefore may not exactly represent the configuration being used.

Customer documentation updates

You can get the latest customer documentation and information for your product by going to www.xerox.com and doing one of the following:

- Enter your product number (e.g., 4110, 4595) in the Search field and select **Search**.
- Select the **Support & Drivers** link and then use the search options to locate your specific printer.

Be sure to periodically check www.xerox.com for the latest information for your product.

2. Windows Me



KEY POINT: The User Interface (UI) screens shown in this guide may or may not reflect the screens displayed on your 4110/4590 system. The UI screens vary from system to system and from marketplace to marketplace. Therefore, the UI screens in this guide are a representation of the type of screens that *may* be seen on your particular system.

This chapter contains information on:

- The software included for Windows ME
- The hardware and software requirements on page 2-2
- Adobe PS driver installation information and instructions on page 2-2
- The device options and print settings for the PS driver on page 2-8

About the software

This section describes the software for Windows Me included on the PostScript Driver Library CD-ROM.

Bundled software

The following items are included in the “PS\Win_Me”, “Utility\ATM\Win_Me, and “Utility\SfontsWin_Me” folders on the enclosed CD-ROM. Please read the “Readme.txt” file which contains cautionary notes about how to use the printer driver.

Xerox 4110/4590 PS Printer Driver (ver.4.5.3) and PPD files

Xerox 4110/4590 PostScript driver and PPD files (for Windows Me).

ATM (Adobe Type Manager)(ver.4.0)

Helps you to install typefaces and activate and manage your fonts.

Adobe Screen Fonts (TrueType/PostScript)

Includes 136 screen fonts (19 TrueType fonts and 117 PostScript fonts), which are compatible with the printer fonts. ATM is used to install the PostScript screen fonts. When using these fonts to print, it is recommended that you use the Adobe PostScript (4.5.3) printer driver.

Adobe Acrobat Reader

Allows you to view and print PDF files on all major computing platforms.

Hardware/software requirements

The minimum system requirements for the Windows Me printer driver are described below.

Computer System	Personal computer which can run the Windows Me OS
Basic Software	Windows Me

The Xerox 4110/4590 PS Printer Driver

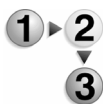


KEY POINT: When installing the printer driver, ensure that you select the correct one (either 4110 or 4590).

Install Xerox 4110/4590 PS 4.5.3 printer driver onto Windows Me by following the procedure below.

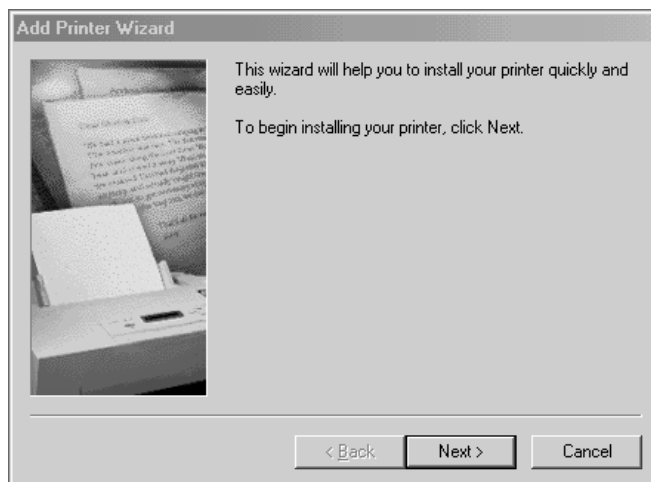
It is possible to cancel installation of the printer driver by clicking [Cancel] in the dialog box displayed during installation. You can also click [Back] to ignore the settings in that dialog box and return to the previous dialog box.

Installation procedure



1. Start Windows Me.
2. On the Start menu, point to Settings and click [Printers].
3. In the Printers window, double-click [Add Printer].

4. Click [Next].

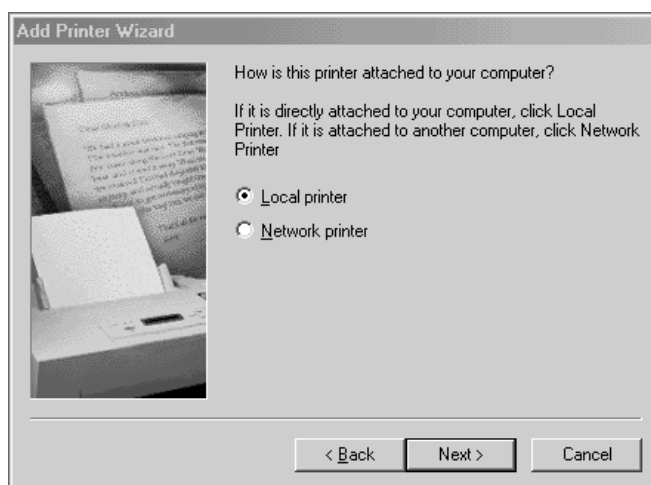


5. Select how the printer is connected to the computer and click [Next].

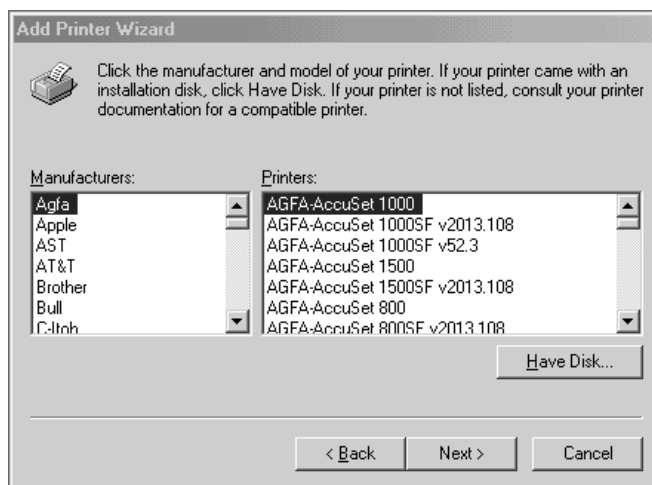
Select [Local printer] when the printer is connected directly to the computer. Otherwise, select [Network printer]. The following is an example of a local printer.



NOTE: When you select [Network printer], specify the path to the printer in the network path or queue name box.



6. Insert the PostScript Driver Library CD-ROM in your CD-ROM drive.
7. Click [Have Disk].



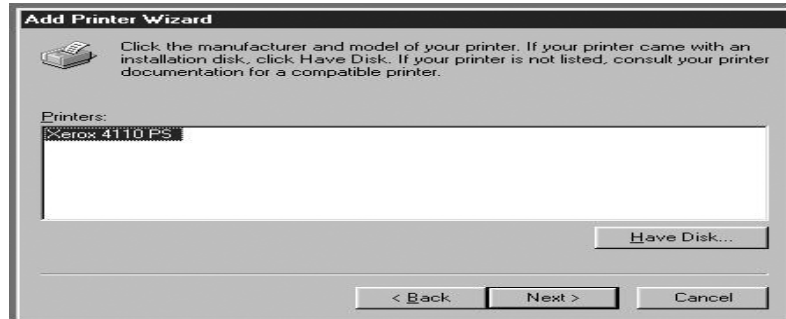
8. Enter "Drive Name:\PrinterDriver\Win_Me" in the "Copy manufacturer's files from:" box and click [OK].

In this example, we have used "D:" as the CD-ROM drive. If you are using a different drive for the CD-ROM, specify accordingly.

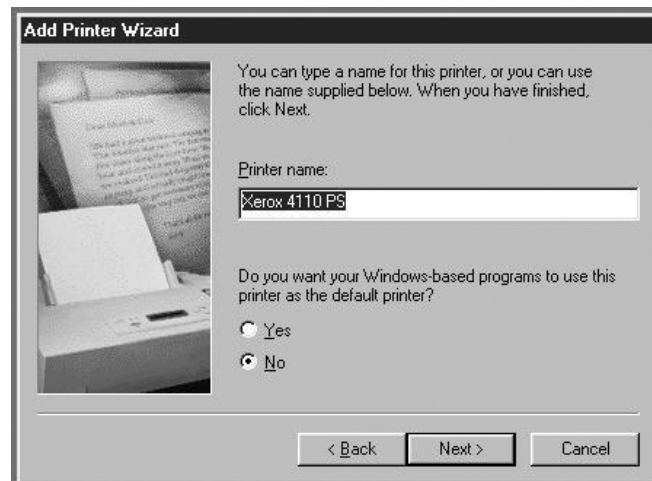
NOTE: Click [Browse] to specify a folder on the CD-ROM.



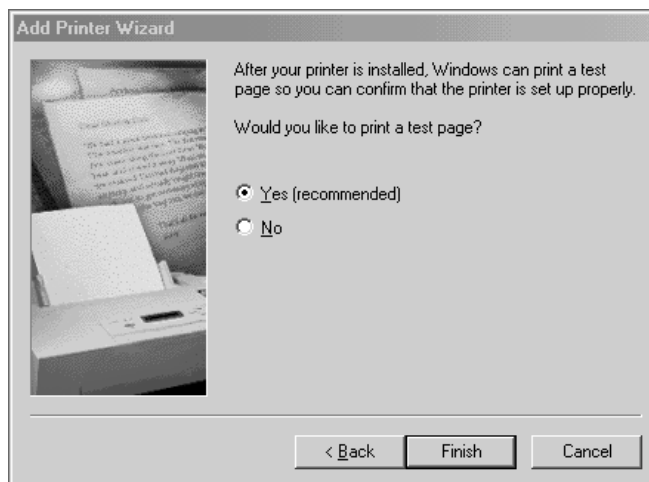
9. Select your printer model from the Printers list and click [Next].



10. Type a name for the printer and specify whether you want to use the printer as the default printer, then click [Next].



11. Specify whether or not to print a test page, then click [Finish].



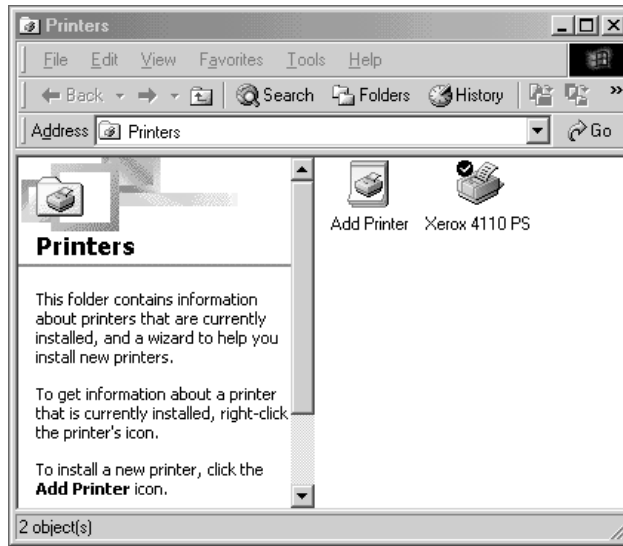
Installation begins.

12. Read the End User License Agreement and click [Agree].

If you click [Disagree], see page 2-7 for details.



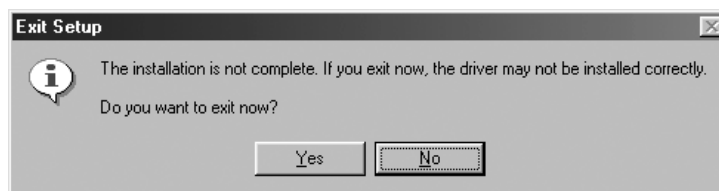
13. Confirm that a printer has been added in the Printers window.



- This completes installation of the printer driver. Remove the CD-ROM from the drive.
- See “Printer Driver properties” on page 2-8 to configure the printer.
- Store your CD-ROM in a safe place.

If you click Disagree in the License Agreement

If you click [Disagree] in the End User License Agreement, the following dialog box appears.



- Click [No] to return to the operation and continue.
- Click [Yes] to cancel the installation. A printer is added to the Printers window, but the printer driver is not installed properly.
- When you right-click the printer and click [Properties] from the menu, the Reinstallation tab is added to the printer driver properties dialog box. Follow the directions on that tab.
- When you finish reinstalling the printer driver, continue to the “Printer Driver properties” section to set up the printer.

Printer Driver properties

This section describes printer specific settings included in the printer driver properties:

- Configuration Tab
- Options Tab
- Output Settings Tab



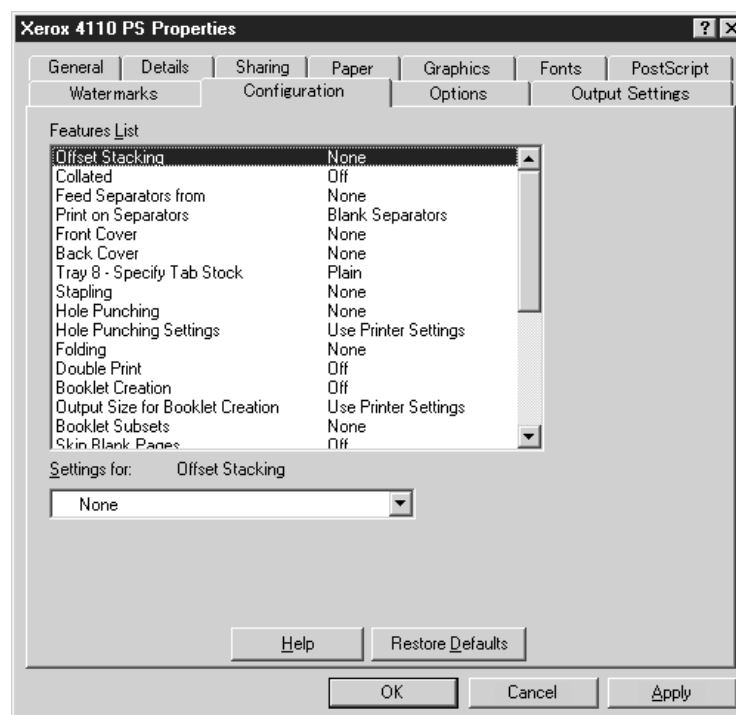
NOTE: You can also refer to Help for explanations of these settings. See “How to use help” on page 2-18 for details about how to use Help.

To view the printer driver properties, select the printer icon in the Printers window, then click [Properties] on the File menu.

Configuration tab

This section describes the settings on the Configuration tab.


Select the function that you want to set in the Features List and change them in the Settings box below.



NOTE 1: You can restore defaults by clicking [Restore Defaults].

NOTE 2: The settings that can be selected vary depending on which options have been installed. Change these settings only after confirming that the option settings are complete. See “Options tab” on page 2-13.

Feature List

Offset Stacking	The position of individual jobs or sets of copies are shifted to either side of the output tray to enable easy separation.
Collated	Selects whether to collate a multiple-page file per set when they are printed.
Feed Separators from	Specifies the paper tray that transparency dividers are to be fed from. When [Auto] is selected, the tray set on the machine is used as the feed destination.
Print on Separators	Specifies whether or not to print on the transparency dividers as well as the transparency.
Front Cover	Specify whether to add a front cover to the printouts. Select the paper tray for feeding the front cover sheets.
Back Cover	Specify whether to add a back cover to the printouts. Select the paper tray for feeding the back cover sheets.
Tray 8 - Specify Tab Stock	Specifies whether or not to print on the transparency dividers as well as the transparency.
Stapling	<p>Specifies whether or not to staple printed documents and the position of the staple. You can staple 2 to 50 sheets of 80 g/m² or lighter paper.</p> <p> NOTE: You cannot use staples in the following situations:</p> <ul style="list-style-type: none"> – When anything other than Finisher Tray is selected for Output Destination in the Advanced tab. – When Job Offset is selected.
Hole Punching	<p>Select the punching position.</p> <p>The holes are made based on the output orientation of the paper. As a result, the holes may not be punched correctly depending on the position of the image.</p>

Hole Punching Specify the number of holes to punch. Select from "Use Printer Settings," "2 Holes," or "4 Holes."

If "3 Holes" is selected for "Hole Puncher Setup" on the "Device Settings" tab, only "Use Printer Settings" will be available for selection. "Device Settings" tab is displayed on the print driver screen when "Properties" is selected from the menu of the printer icon in the "Printers" folder.

Folding Select the folding method.



NOTE: "Z Fold," "Z Tri-Fold," and "C Tri-Fold" will be available when the Tri-Fold Output Tray is installed and set up in the "Options" tab.

"Bi-Fold" is available when a Booklet Tray is installed and set up in the "Device Settings" tab.

Double Print Enable this feature to repeatedly print one page twice on a paper with a bigger size than the original. You can use Double Print feature if you have set the zoom ratio to 100% with the following paper size and output size settings.

- | | |
|---------------------|---------------------|
| • Paper Size | • Output Size |
| • A4 | • A3 |
| • A5 | • A4 |
| • B5 | • B4 |
| • Folio (8.5 x 11") | • Ledger (11 x 17") |

Booklet Creation Specify the assembling and finishing methods for booklet creation. You can check the result of the change in setting on the preview image at the top right of the screen.



KEY POINT: "Booklet Creation" feature will only be available if "Automatically Select" or "Auto Paper Select (Type)" is selected in "Paper Source" on the "Paper" tab.

Output Size for Booklet Creation

Specify the output size for booklet creation printing.

When "Booklet Creation" is selected, only "AutoSelect Tray" and "Auto Paper Select (Type)" are available in "Paper Source" on the "Paper" tab. Conversely, "Booklet Creation" feature is only available when "Automatically Select" or "Auto Paper Select (Type)" is selected in "Paper Source."

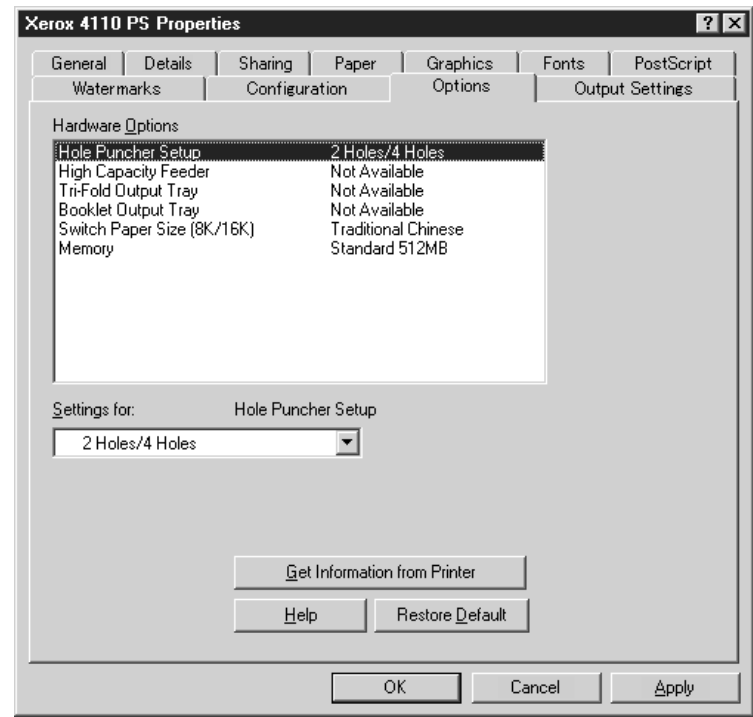
Booklet Subsets	Specify the number of sheets in each subset when printing booklet in subsets. Select from "None," or "Every Sheet" to "Every "20 Sheets."
Skip Blank Pages	Specify whether to skip blank pages when printing documents that consist of blank pages.
Bypass Feed Orientation	Specifies the paper orientation when printing from the bypass tray. When feeding the short edge of the paper first, select [Landscape]. When feeding the long edge of the paper, select [Portrait].
Print Mode	Specifies whether to give priority to the print speed or the image quality.
Halftone	<p>Select the halftone settings for printing.</p> <ul style="list-style-type: none">• Select [Fine Dots] for the small size halftone dot commonly used in PostScript.• Select [Thick Dots] for coarser dots than the Fine Dots setting.• Select [Type 3] for the same halftone setting that is used in PCL.
Image Enhancement	Specifies whether or not to use the Image Enhancement function. Selecting [On] smooths out boundaries when printing. This reduces jagged edges by artificially increasing the resolution of the image. When printing a bitmapped image composed of coarse halftone dots, smooth color or grayscale gradation is impossible in certain situations. In this case, select [Off].
Draft Mode	Specifies whether or not to reduce the amount of toner used when printing drafts. When [On] is selected, the overall print becomes lighter. This is best for printing documents when high print quality is not necessary.
Custom Paper Auto Orientation	Specifies whether or not to correct the orientation of the custom paper.

Substitute Tray	<p>Specifies what action to take when the paper for the print size is not loaded in the machine.</p> <ul style="list-style-type: none">• Use Printer Settings - Use the printer settings. The settings can be confirmed on the control panel.• Display Message - Display paper supply messages on the control panel. Printing is impossible until paper is supplied.• Use Nearest Size (Adjust to Fit) - Selects the nearest paper size and automatically adjusts the image size as necessary.• Use Nearest Size (No Zoom) - Selects the nearest paper size and prints the same size as the image.• Use Larger Size (Adjust to Fit) - Selects paper larger than the original and automatically adjusts the image size as necessary.• Use Larger Size (No Zoom) - Selects paper larger than the original and prints the same size as the image.• Feed from Bypass Tray - Feed from bypass tray.
Print Mixed Size Originals	<p>Controls the orientation of the second-side image when printing double-sided.</p>
Available Printer Memory	<p>Enter the amount of usable printer memory (in KB) in the Edit box. Usually, it is not necessary to change this.</p>
Available Font Cache	<p>Enter the amount of memory available for the font cache (in KB) in the Edit box. Usually, it is not necessary to change this.</p>
Account Mode	<p>Specifies if all users or only System Administrators can change authentication related settings.</p>

Options tab

This section describes the settings in the Options tab.

Select the items in Hardware Options and change them in the Settings box below.



NOTE: You can restore defaults by clicking [Restore Default].

Hardware Options


- | | |
|-----------------------------|--|
| High Capacity Feeder | Select "Available" if the High Capacity Feeder has been installed. |
| Hole Puncher Setup | Specify the number of holes to punch on the paper. Select from "2 Holes/4 Holes" or "2 Holes/3 Holes." |

- Tri-Folding Output Tray

Select "Available" if the Tri-Fold Output Tray is installed.
- Booklet Output Tray

Select "Available" if the Booklet Tray is installed.
- Switch Paper Size (8K/16K)

Indicate your language preference to enable the set of 8K and 16K paper sizes that is best suited to your needs. If you select "Traditional Chinese," the dimensions of the 8K and 16K paper sizes are 267 x 388mm and 194 x 267mm respectively. If you select "Simplified Chinese," the dimensions will be 270 x 390mm and 195 x 270mm respectively.

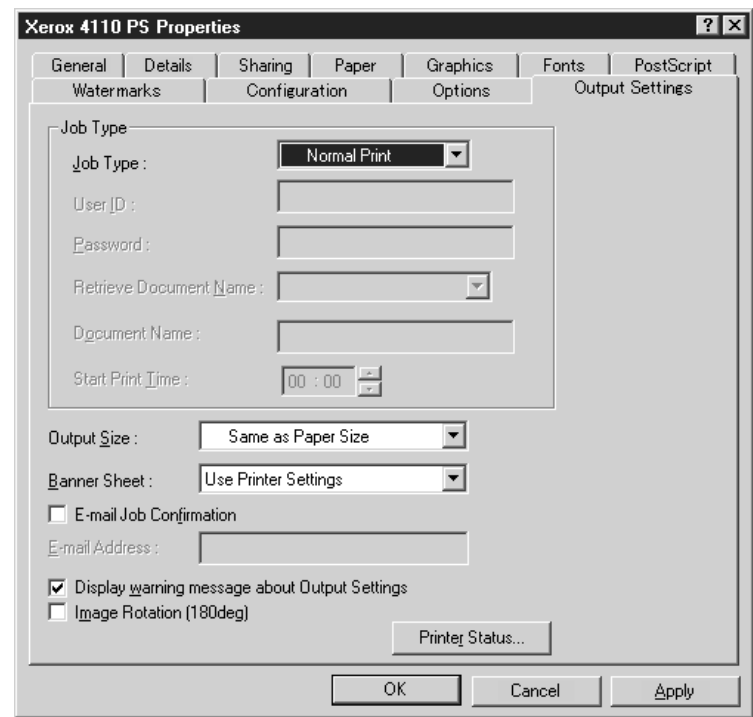


NOTE: If "AB Series (8K/16K)" is not selected in "Paper Size Settings," both sets of 8K and 16K paper sizes will not be available despite the setting specified here.
- Memory

The built-in memory is 512MB.

Output Settings tab

This section describes the settings in the Output Settings tab.



NOTE: You can restore defaults by clicking [Restore Defaults].

Job Type

You can specify the print function for Secure Print, Sample Print, and Delayed Print.

Secure Print temporarily stores print jobs in the printer and then prints them when print instructions are received from the control panel.

Sample Print outputs only one copy when multiple copies are specified. If there is no problem, the remaining sets can be printed.

Delayed Print temporarily stores print jobs in the printer and then prints them at the scheduled time.

To use Secure Print, Sample Print, or Delayed Print feature, input the User ID and password for Print Type in the "Output Settings" tab. The password entered appears as asterisks(*).

Normal Print	Select when you do not want to output secure prints, sample prints, or delayed prints.
Secure Print	Select when you want to output secure prints.
Sample Print	Select when you want to output sample prints. The Collated setting must be selected in the Page Setup tab when using Print Type.
Delayed Print	Select when you want to output delayed prints. See the On-line Help for details on the operation of the printer.
User ID	Displays the User ID for Job Type. The user ID displayed is the User ID specified on the Configuration tab. This option can only be selected when the setting on the Configuration tab has been completed. This is a display-only item and cannot be changed here.
Password	Displays password for Secure Print password specified in the Configuration tab. Each digit that you enter appears as an asterisk (*). This option can only be selected when the setting on the Configuration tab has been completed. This is a display-only item and cannot be changed here.

Retrieve Document Name Select the method of specifying the document name. If you have selected Auto Retrieve, the valid document name can be up to 24 alphanumeric characters.

Document Name When “Enter Document Name” is selected in the Retrieve Document Name list, a document name up to 24 alphanumeric characters can be specified.

Start Print Time Specifies the time when a Delayed Print job will be printed. Place the cursor in the hour or minute box and press the up or down triangle to specify the start time. You can also set the time by entering the time directly into the boxes. The default setting is 00:00.

Miscellaneous settings

Output Size Selects the size of the paper used for output. The output is automatically enlarged or reduced, depending on the paper size selected here and the paper size selected in the Paper tab.

- For example, when you select [B5] in Paper Size on the Paper tab, and select [A4] as the Output Size, the output is automatically enlarged and printed.
- When you select [None], the job is printed based on the Paper Size selected in the application.

Banner Sheet Specifies whether or not to add a banner sheet to printed output.

- When [Use Printer Settings] is selected, the printer settings are used.
- When [Printer Start Page] is selected, outputs the banner sheet using the start-sheet.

E-mail Job Confirmation Specifies whether or not to use the Mail Notify feature to notify the end of the print job via e-mail. Default is [Off].

E-Mail Address Specifies the e-mail address for the Mail Notify feature.

**Display warning message
about Output Settings**

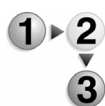
When printing, the printer driver checks whether the Output Size setting conflicts with other settings.

- When this is activated, a conflict dialog box appears if there is non-conformity during printing. Check the content of the dialog box and resolve the conflicting function to continue printing.
- When this is inactive, no conflict dialog box appears, but the conflicting setting is automatically resolved and printing continues.

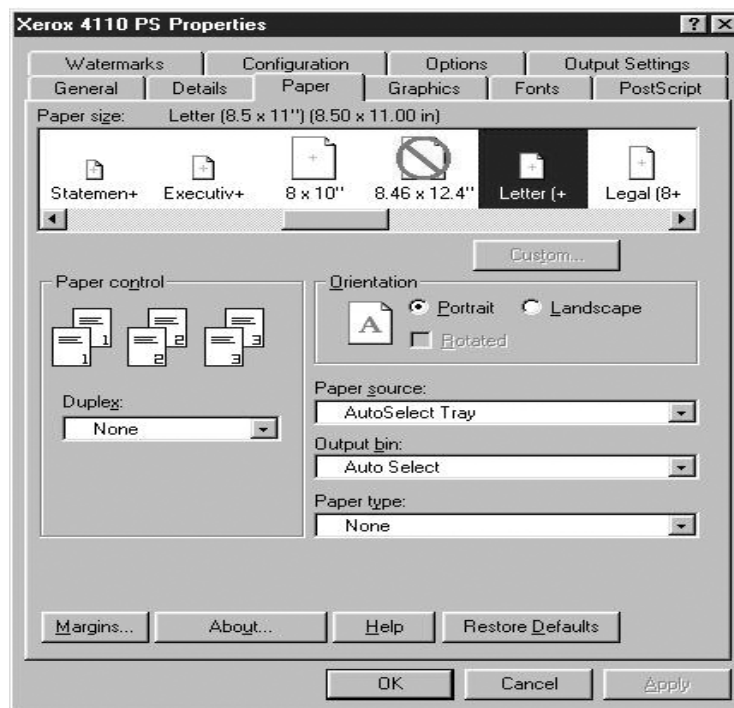
Image Rotation (180deg)

Set the checkbox to rotate the prints by 180°. Default is [Off].

How to use help



To get help on a feature or function, click the [Help] button; an explanation of the current tab appears as Help information.



3. Windows NT 4.0

This chapter contains information on:

- The software included for Windows NT 4.0
- Hardware and software requirements on page 3-2
- Adobe PS driver installation on page 3-2
- Print driver device options and print settings on page 3-8

About the software

This section describes the software for Windows NT 4.0 that is included on the PostScript Driver Library CD-ROM.

Bundled software

The following items are included in the “PS\NT40”, “Utility\ATM\NT40”, and “Utility\Sfonts\NT40” folders on the CD-ROM. Please read the “Readme.txt” file which contains cautionary notes about how to use the printer driver.

Xerox 4110/4590 PS Printer Driver (ver. 5.2.2) and PPD files	Xerox 4110/4590 PostScript driver and PPD files (for Windows NT 4.0).
ATM (Adobe Type Manager, ver. 4.0)	Helps you to install typefaces and activate and manage your fonts.
Adobe Screen Fonts (TrueType/PostScript)	Includes 136 screen fonts (19 TrueType fonts and 117 PostScript fonts), which are compatible with the printer fonts. ATM is used to install the PostScript screen fonts. When using these fonts to print, it is recommended that you use the Adobe PostScript (5.2.2) printer driver.
Adobe Acrobat Reader	Allows you to view and print PDF files on all major computing platforms.

Hardware/software requirements

The minimum system requirements for the Windows NT 4.0 printer driver are described below.

Computer System	Personal computer which can run the Windows NT 4.0 operating system
Basic Software	Windows NT Workstation 4.0 / Windows NT Server 4.0 (Service Pack 6a or later)

The Xerox 4110/4590 PS Printer Driver



KEY POINT: When installing the printer driver, ensure that you select the correct one (either 4110 or 4590).

Install the Xerox 4110/4590 PS 5.2.2 printer driver onto Windows NT by following the procedure below.

It is possible to cancel installation of the printer driver by clicking [Cancel] in the dialog box displayed during installation. You can also click [Back] to delete the settings in that dialog box and return to the previous dialog box.

Installation procedure



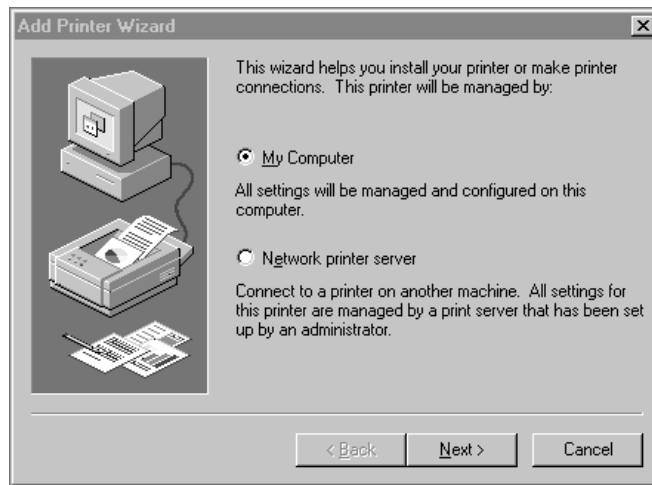
1. Start Windows NT 4.0.

NOTE: Log on as a Power User group member or an Administrator. Refer to the Windows NT 4.0 documentation for details about the Power User group.

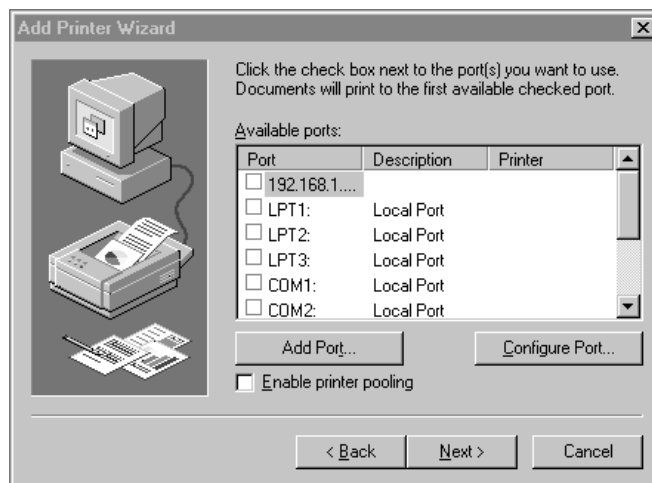
2. On the Start menu, point to Settings and click [Printers].
3. In the Printer window, double-click [Add Printer].
4. Select how the printer is connected to the computer and click [Next]. Select [My Computer] if the printer is connected directly to the computer or to the network in the TCP/IP(LPD) environment. Select [Network printer server] in other cases. The following is an example of a local printer.



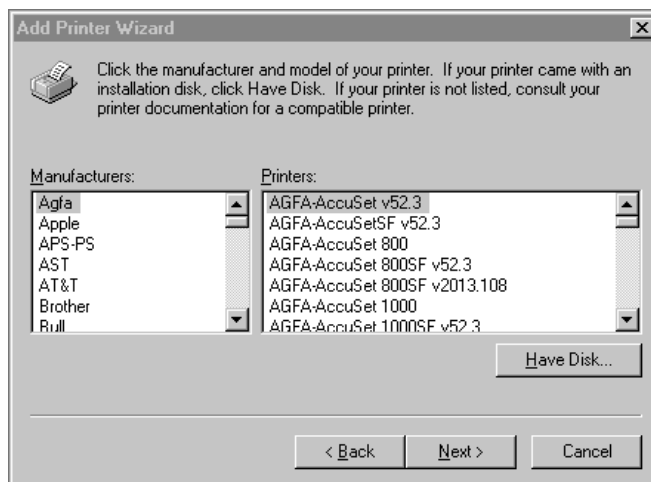
NOTE: Specify the target printer in the *Connect to Printer* dialog box if you selected [Network printer server].



5. Select the port you are using and click [Next].

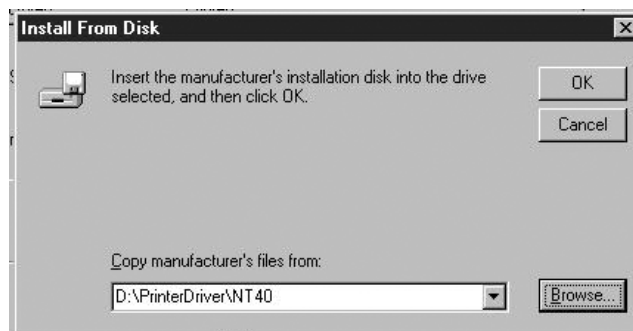


6. Insert the PostScript Driver Library CD-ROM in the CD-ROM drive.

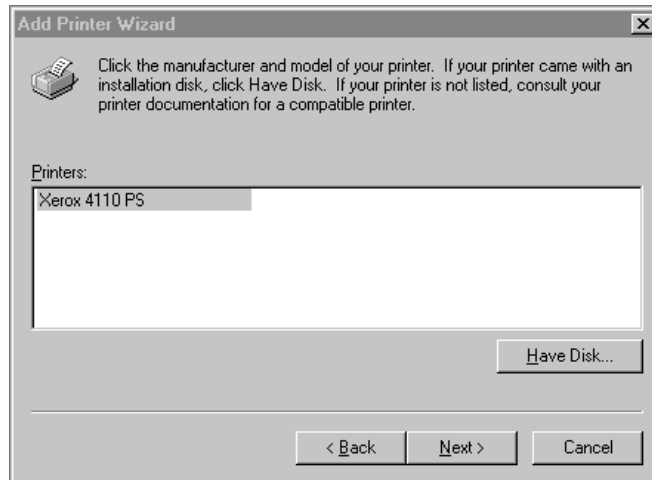
7. Click [Have Disk].**8. Enter "Drive Name:\PrinterDriver\NT40" in the "Copy manufacturer's files from:" box and click [OK].**

In this example, we have used "D:" as the CD-ROM drive. If you are using a different drive for the CD-ROM, specify accordingly.

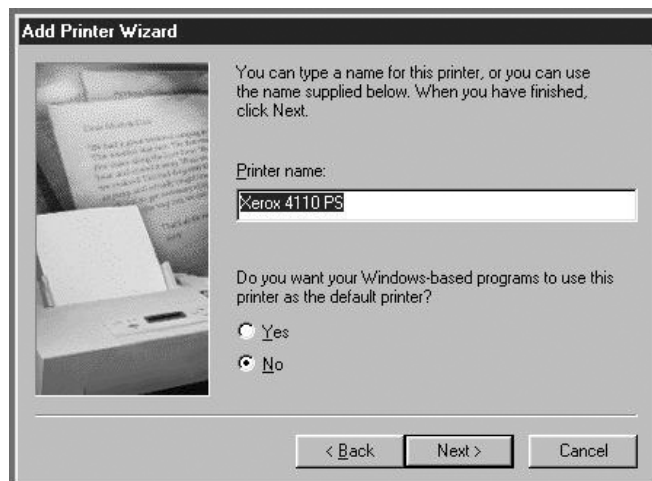
NOTE: Click [Browse] to specify a folder on the CD-ROM.



9. Select your printer model from the Printers list and click [Next].

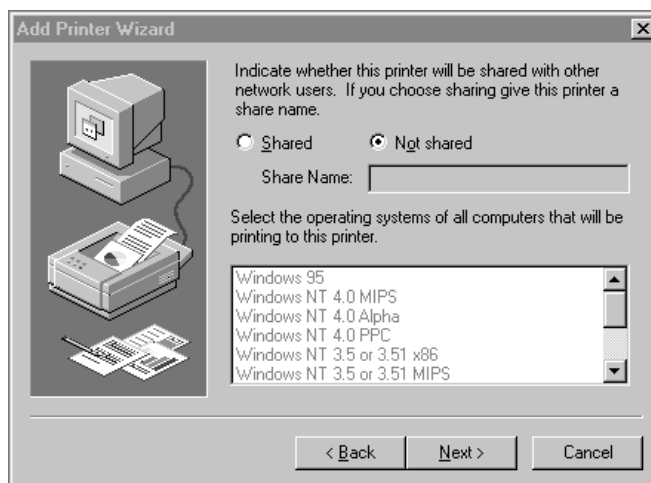
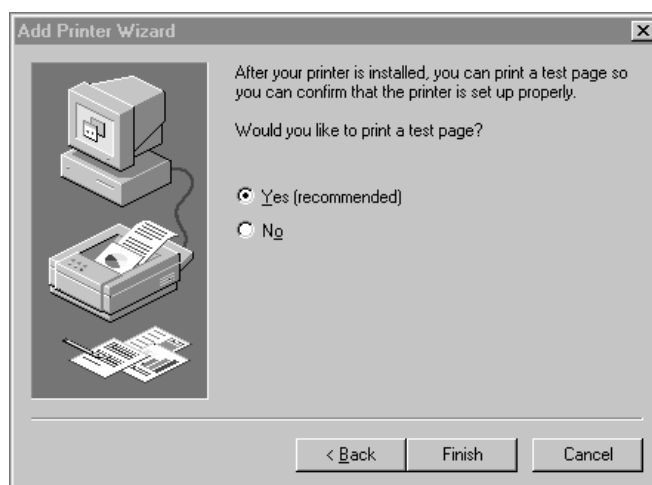


10. Enter the printer name, specify if you want to use the printer as the default printer, and click [Next].



11. Select [Not shared] and click [Next].

We recommend that you install the driver on each computer with the procedure appropriate to the operating system.

**12.** Specify whether or not to print a test page, then click [Finish].

Installation begins.

13. Read the End User License Agreement and click [Agree].

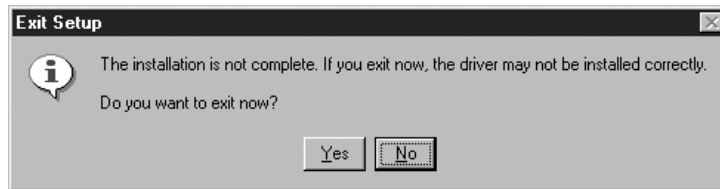
When you click [Disagree], see page 3-8 for details.

**14.** Confirm that the printer has been added in the Printers window.

- This completes installation of the printer driver. Remove the CD-ROM from the drive.
- See “Device options and print settings” on page 3-8. to configure the printer.
- Store your CD-ROM in a safe place.

If you click Disagree in the License Agreement

When you click [Disagree] in the End User License Agreement, the following dialog box appears.



- Click [No] to return to Step 13. and continue the operation.
- Click [Yes] to cancel the installation. A printer is added in the Printers window, but the printer driver is not installed properly.
- Select the printer and click [Properties] on the File menu. The Reinstallation tab is added to the printer driver properties dialog box. Follow the directions on that tab.
- When you finish reinstalling, continue to the "Device options and print settings" section to set up the printer.

Device options and print settings

This section describes printer specific settings for printer driver properties and document presets:

- Installable Options in the Device Settings Tab
- Configuration Tab
- Detail Settings Tab
- Paper/Output Tab



NOTE: You can also refer to Help for explanations of these settings. See "Device settings tab" on page 3-9..

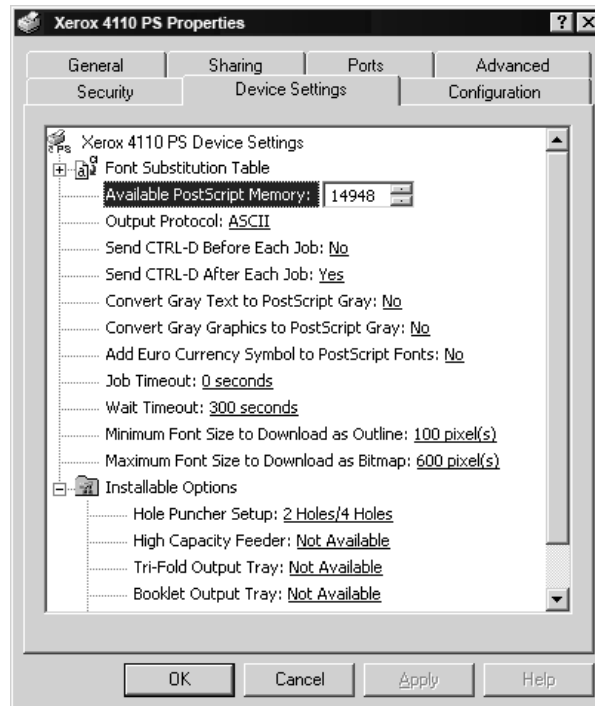
To view the Device Settings or Configuration tabs, select the printer icon in the Printers window, then click Properties on the File menu.

To view the Advanced or Output Settings tabs, select the printer icon in the Printers window, then click Document Defaults on the File menu.

Device settings tab

This section describes Installable Options in the Device Settings tab. To print correctly, it is necessary to make the appropriate settings in this tab.

Select the items in Installable Options and change the settings in the menu that appears on the right.



Settings

High Capacity Feeder Select "Available" if the High Capacity Feeder has been installed.

Hole Punch Specify the number of holes to punch on the paper. Select from "2 Holes/4 Holes" or "2 Holes/3 Holes."

Tri-Folding Output Tray Select "Available" if the Tri-Fold Output Tray is installed.

Booklet Output Tray Select "Available" if the Booklet Tray is installed.

Paper Size Settings Specify the paper size group for different locales to enable the selection of paper sizes common to that locale. The following groups of paper size categorized by locale are available: "AB Series," "AB Series (8K / 16K)," "AB Series (8 x 13)," "AB Series (8 x 13" / 8 x 14)," and "Inch Series." As the paper size settings will be set automatically in accordance with the relevant locale, it is usually not necessary to change this setting.

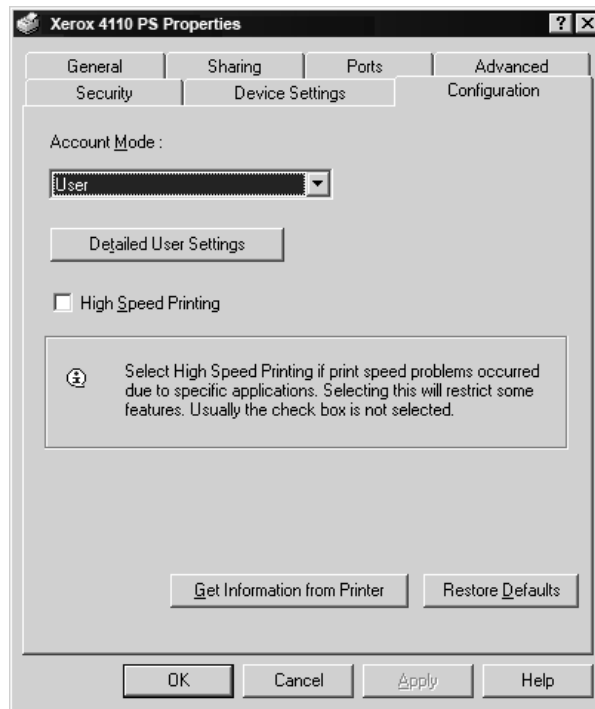
Switch Paper Size (8K/16K) Indicate your language preference to enable the set of 8K and 16K paper sizes that is best suited to your needs. If you select "Traditional Chinese," the dimensions of the 8K and 16K paper sizes are 267 x 388mm and 194 x 267mm respectively. If you select "Simplified Chinese," the dimensions will be 270 x 390mm and 195 x 270mm respectively.



NOTE: If "AB Series (8K/16K)" is not selected in "Paper Size Settings," both sets of 8K and 16K paper sizes will not be available despite the setting specified here.

Configuration tab

This section describes the settings of the Configuration tab.



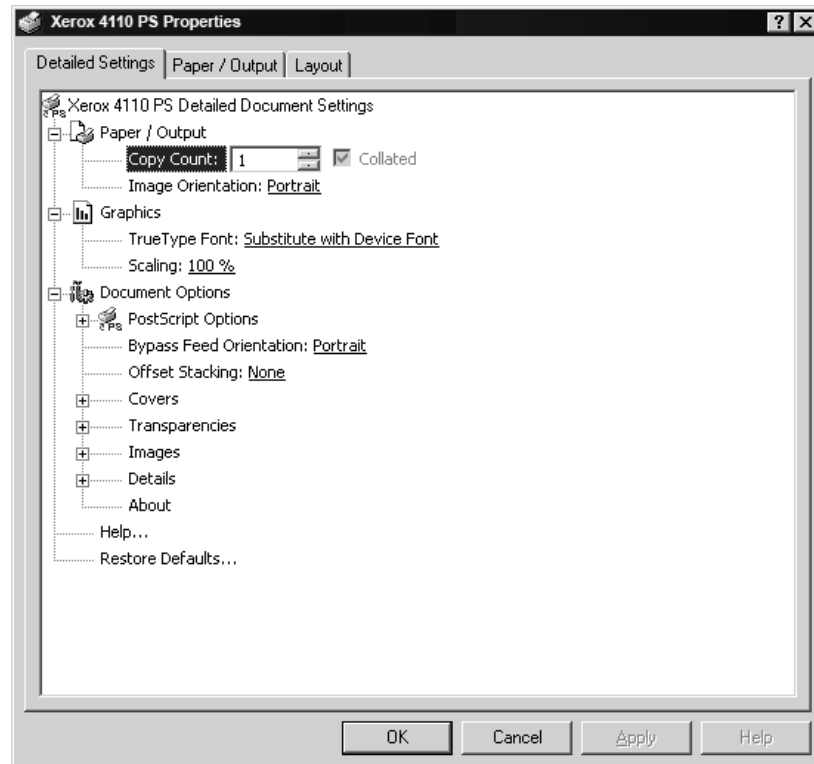
NOTE: You can restore defaults by clicking [Restore Defaults].

Settings

Account Mode	Specifies if all users or only System Administrators can change authentication related settings.
Detailed User Settings	<p>Sets the authentication information.</p> <ul style="list-style-type: none">• Use Default User Settings - The values set in this feature are used as the authentication parameters.• Specify Job Owner Name - Select how to specify User ID.<ul style="list-style-type: none">– Job Owner Name - Enter a User ID.– Password - Enter a Password that matches the User ID.– Account ID - Enter an Account ID.– Billing ID - Enter a User ID for Charge Print.– Password - Enter a Password that matches the Billing ID.• Prompt User for Settings - Select this feature to display the [Enter User Details] dialog-box each time you start printing. The user is then required to enter authentication information such as their User ID.<ul style="list-style-type: none">– Display Previous User Details - Select to store the user details entered in the [Enter User Details] dialog-box and display the details in the box as a default next time.– Hide User ID(***) - Select to specify whether a user ID is to be displayed or hidden when it is entered.– Hide Account ID(***) - Select to specify whether an account ID is to be displayed or hidden when it is entered.
High Speed Printing	Set this feature to make improvements in print speed, when using an application that generates PostScript directly.
Get Information from Printer	Click [Get Information from Printer] when the machine is used as a network printer to verify the printer option installation state using the print port to which the printer is connected. This information is also reflected in the Hardware Options setting.

Detailed Settings tab

This section describes the settings of the Detail Settings tab. Select the items from Printer Features and change them on the menu displayed to the right.



Settings

Bypass Feed Orientation Specifies the paper orientation when printing from the bypass tray. When feeding the short edge of the paper first, select [Landscape]. When feeding the long edge of the paper, select [Portrait].

Offset Stacking The position of individual jobs or sets of copies are shifted to either side of the output tray to enable easy separation.

Covers Specifies the settings related to Covers.



NOTE: *The cover cannot be printed.*

- **Front Cover** - Specify whether to add a front cover to the printouts. Select the paper tray for feeding the front cover sheets.
- **Back Cover** - Specify whether to add back cover to the printouts. Select the paper tray for feeding the back cover sheets.
- **Tray 8 - Specify Tab Stock** - Specify whether tab stock is being loaded in tray 8. Select either "Plain" or "Tab Stock."

Transparencies Set up separators to be inserted between transparencies.

- **Feed Separators from** - Specifies the paper tray that transparency dividers are to be fed from. When [Auto] is selected, the tray set on the machine is used as the feed destination.
- **Print on Separators** - Specifies whether or not to print on the transparency dividers as well as the transparency.

Images Set up image-related settings.

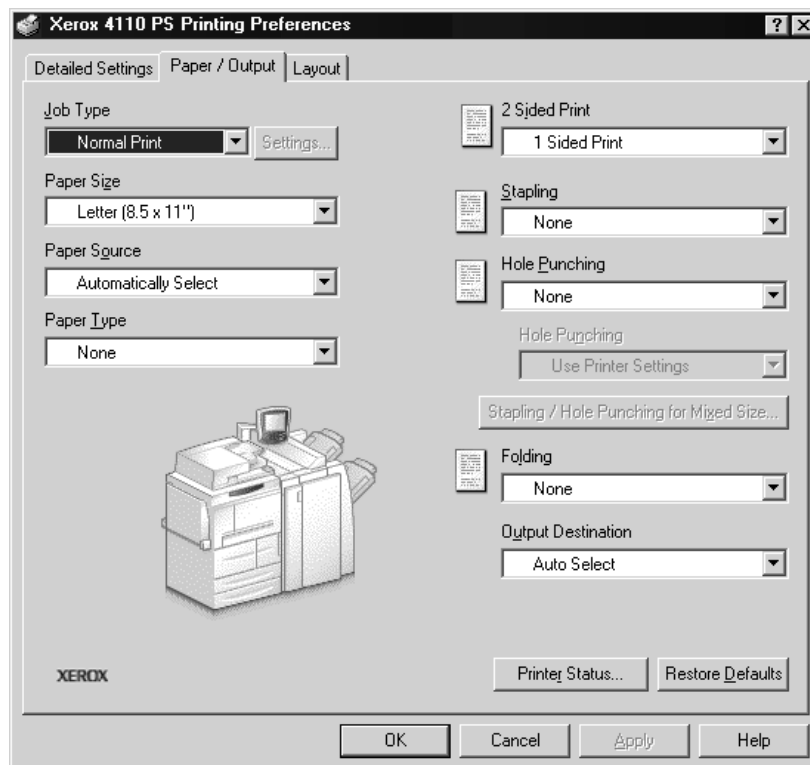
- **Print Mode** - Specifies whether to give priority to the print speed or the image quality.
- **Halftone** - Select the halftone settings for printing.
- Select [Fine Dots] for the small size halftone dot commonly used in PostScript.
- Select [Thick Dots] for coarser dots than the Fine Dots setting.
- Select [Type 3] for the same halftone setting that is used in PCL.
- **Image Enhancement** - Specifies whether or not to use the Image Enhancement function. Selecting [On] smooths out boundaries when printing. This reduces jagged edges by artificially increasing the resolution of the image. When printing a bitmapped image composed of coarse halftone dots, smooth color or grayscale gradation is impossible in certain situations. In this case, select [Off].

- Details** Set up other printing options.
- **Image Rotation (180deg)** - Set the checkbox to rotate the prints by 180°. Default is [Off].
 - **Double Print** - Enable this feature to repeatedly print one page twice on a paper with a bigger size than the original. You can use Double Print feature if you have set the zoom ratio to 100% with the following paper size and output size settings.

• Paper Size	• Output Size
• A4	• A3
• A5	• A4
• B5	• B4
• Folio (8.5 x 11")	• Ledger (11 x 17")
 - **Skip Blank Pages** - Specify whether to skip blank pages when printing documents that consist of blank pages.
 - **Draft Mode** - Specifies whether or not to reduce the amount of toner used when printing drafts. When [On] is selected, the overall printed page becomes lighter. This is best for printing documents when high print quality is not necessary.
 - **Banner Sheet** - Specifies whether or not to add a banner sheet to printed output.
 - When [Use Printer Settings] is selected, the printer settings are used.
 - When [Printer Start Page] is selected, outputs the banner sheet using the start-sheet.
 - **E-mail Job Confirmation** - Specifies whether or not to use the Mail Notify feature to notify the end of the print job via e-mail. Default is [Off].
 - **Enter Address** - Specifies the e-mail address for the Mail Notify feature.
 - **Substitute Tray** - Specifies what action to take when the paper for the print size is not loaded in the machine.
 - **Custom Paper Auto Orientation** - Specifies whether or not to correct the orientation of the custom paper.
 - **Print Mixed Size Originals** - Controls the orientation of the second-side image when printing double-sided.
- About** Click the "About" button to display the "About" dialog box. The version number and copyright description for this print driver will be displayed.
- Help** To display Help, click the "Contents" button at the top left of the screen. You can find detailed descriptions on the content items in Help or enter keywords to search for needed information.

Paper/Output tab

This section describes the Paper/Output settings tab.



NOTE: You can restore defaults by clicking [Restore Defaults].

Settings

Job Type You can select Normal Print or specify the print function for Secure Print, Sample Print, and Delayed Print. To use Secure Print, Sample Print, or Delayed Print feature, input the User ID and password for Print Type in the Configuration tab. The password entered appears as asterisks(*).

- **Normal Print** - Select when you do not want to output secure prints, sample prints, or delayed prints.
- **Secure Print** - Secure Print temporarily stores print jobs in the printer and then prints them when print instructions are received from the control panel. Select when you want to output secure prints.
- **Sample Print** - Sample Print outputs only one copy when multiple copies are specified. If there is no problem, the remaining sets can be printed. Select when you want to output sample prints.



NOTE: The Collated setting must be selected in the Paper/Output tab when using Print Type.

- **Delayed Print** - Delayed Print temporarily stores print jobs in the printer, and then prints them at the scheduled time. Select when you want to output delayed prints.

See the On-line Help for details on the operation of the printer.

- **User ID** - Displays the User ID for Job Type. The user ID displayed is the User ID specified on the Configuration tab. This option can only be selected when the setting on the Configuration tab has been completed. This is a display-only item and cannot be changed here.
- **Password** - Displays the password for Secure Print as specified in the Configuration tab. Each digit entered appears as an asterisk (*). This option can only be selected when the setting on the Configuration tab has been completed. This is a display-only item and cannot be changed here.
- **Retrieve Document Name** - Select the method for specifying the document name. If you have selected Auto Retrieve, the valid document name can be up to 24 alphanumeric characters can be specified.

- **Document Name** - When "Enter Document Name" is selected in the Retrieve Document Name list, a document name up to 24 alphanumeric characters.
- **Start Print Time** - Specifies the time when a Delayed Print job will be printed. Place the cursor in the hour or minute box and press the up or down triangle to specify the start time. You can also set the time by entering the time directly into the boxes. The default setting is 00:00.

Paper Size	Select the paper size of the file to be printed.
Paper Source	Select the paper tray to be used for printing.
Paper Type	Select the paper type to be used for printing.
2-sided Print	Performs 2-sided printing. Select either "Flip on long edge" or "Flip on short edge" for 2-sided printing. Select any one of these options as required. In "Flip on long edge" and "Flip on short edge," the side 1 and side 2 images are printed such that when rotated with the long edge and short edge respectively as axis, they are pointing in the same direction.

Stapling Select the stapling position. The stapling position specified is based on the printing data. If the stapling position is incorrect, refer to the PostScript Kit manual and adjust the Stapling setting accordingly.



NOTE: Limitations for stapling mixed size output may apply. Stapling for mixed size output is not available in the following situations:

- When a setting other than "1 Up" is selected for "Multiple-Up" in the "Layout" tab
- When a setting other than "Off" is selected for "Booklet Creation" in the "Layout" tab
- When "Double Print" is set to "On" under "Details" in the "Detailed Settings" tab
- When a size other than "A3," "B4," "A4," "B5," "8.5 x 11," "11 x 17," "16K (267 x 194mm) / 8K (267 x 388mm)," and "16K (270 x 195mm) / 8K (270 x 390mm)" is selected
- When a setting other than "None" or "On (Mixed Sizes)" is selected for "Hole Punching" in the "Paper / Output" tab

Hole Punching

Select the punching position. The holes are made based on the output orientation of the paper. As a result, the holes may not be punched correctly depending on the position of the image.



NOTE: Moreover, there are limitations for punching holes on mixed size output. Hole punching for mixed size output is not available in the following situations:

- When a setting other than "1 Up" is selected for "Multiple-Up" in the "Layout" tab
- When a setting other than "Off" is selected for "Booklet Creation" in the "Layout" tab
- When "Double Print" is set to "On" under "Details" in the "Detailed Settings" tab
- When a size other than "A3," "B4," "A4," "B5," "8.5 x 11," "11 x 17," "16K (267 x 194mm) / 8K (267 x 388mm)," and "16K (270 x 195mm) / 8K (270 x 390mm)" is selected
- When a setting other than "None," "1 Staple (Mixed Sizes)," or "2 Staples (Mixed Sizes)" is selected for "Stapling" in the "Paper / Output" tab

Hole Punching - Specify the number of holes to punch. Select from "Use Printer Settings," "2 Holes," or "4 Holes."



NOTE: If "3 Holes" is selected for "Hole Puncher Setup" on the "Device Settings" tab, only "Use Printer Settings" will be available for selection. "Device Settings" tab is displayed on the print driver screen when "Properties" is selected from the menu of the printer icon in the "Printers" folder.

Stapling/Hole Punching for Mixed Size Output

Click this button to display the "Stapling/Hole Punching for Mixed Size Output" dialog box. You can specify the settings for stapling or punching for mixed sized documents.



NOTE: There are limitations for stapling mixed size output. Stapling for mixed size output is not available in the following situations:

- When a setting other than "1 Up" is selected for "Multiple-Up" in the "Layout" tab
- When a setting other than "Off" is selected for "Print Booklet" in the "Layout" tab
- When "Double Print" is set to "On" under "Details" in the "Detailed Settings" tab

- When a size other than "A3," "B4," "A4," "B5," "8.5 x 11," "11 x 17," "16K (267 x 194mm) / 8K (267 x 388mm)," and "16K (270 x 195mm) / 8K (270 x 390mm)" is selected
- When a setting other than "None" or "On (Mixed Sizes)" is selected for "Hole Punching" in the "Paper / Output" tab
- When a setting other than "None," "1 Staple (Mixed Sizes)," or "2 Staples (Mixed Sizes)" is selected for "Stapling" in the "Paper / Output" tab
 - **Stapling** - Specify the position to staple mixed size originals. Select "1 Staple (Mixed Sizes)" or "2 Staples (Mixed Sizes)."



KEY POINT: If "Double Print" is set to "On" under "Details" in the "Detailed Settings" tab, the Stapling feature will not be available.

- **Hole Punching** - Select "On (Mixed Sizes)" to enable hole punching feature for mixed size originals.



KEY POINT: When "Double Print" is set to "On" under "Details" in the "Detailed Settings" tab, Hole Punching feature will not be available.

- **Hole Punching** - Specify the number of holes to punch. Select from "Use Printer Settings," "2 Holes" or "4 Holes."



NOTE: If "3 Holes" is selected in "Hole Punching Settings" on the "Device Settings" tab, only "Use Printer Settings" will be available for selection.

Folding (Z Folding)

If Tri-Fold Output Tray is installed, select the check box to perform Z folding for Mixed Size Documents.

- **Image Rotation (180deg)** - Turn the mixed size originals by 180 degrees and print.
- Select "Portrait," "Landscape," or "Portrait & Landscape (For envelopes)."

If "2 Up" or more is selected in "Multiple-Up" on the "Layout" tab, individual pages will be rotated and printed.

- **First Page** - Specifies the "Paper Size" and "Image Orientation" of the first page of the mixed size document.
 - **Paper Size (First Page)** - Specifies the paper size of the first page of the document.
 The paper size combinations for mixed size originals are "A3 and A4," "B4 and B5," "8.5 x 11" and 11 x 17," " and "16K and 8K." "Paper Size" of the "Mixed Pages" will automatically be specified based on this setting.
 - **Image Orientation (First Page)** - Specifies the image orientation of the first page of the document.
 Select either "Portrait" or "Landscape."
- **Mixed Pages** - Specifies the "Paper Size" and "Image Orientation" of the mixed pages.
 - **Paper Size (Mixed Pages)** - Displays the paper size of the mixed pages.
 The paper size will automatically be specified based on the "Paper Size" settings of the first page.
 - **Image Orientation (Mixed Pages)** - Specifies the image orientation of the mixed pages.
 Select either "Portrait" or "Landscape."

Folding

Select the folding method.



NOTE 1: "Z Fold," "Z Tri-Fold," and "C Tri-Fold" will be available when the Tri-Fold Output Tray is installed and set up in the "Device Settings" tab.

NOTE 2: "Bi-Fold" is available when a Booklet Tray is installed and set up in the "Device Settings" tab.

Output Destination

Select the paper output destination. Select "Auto Select" or "Finisher Tray (Large Output)" from the "Output Destination" menu.

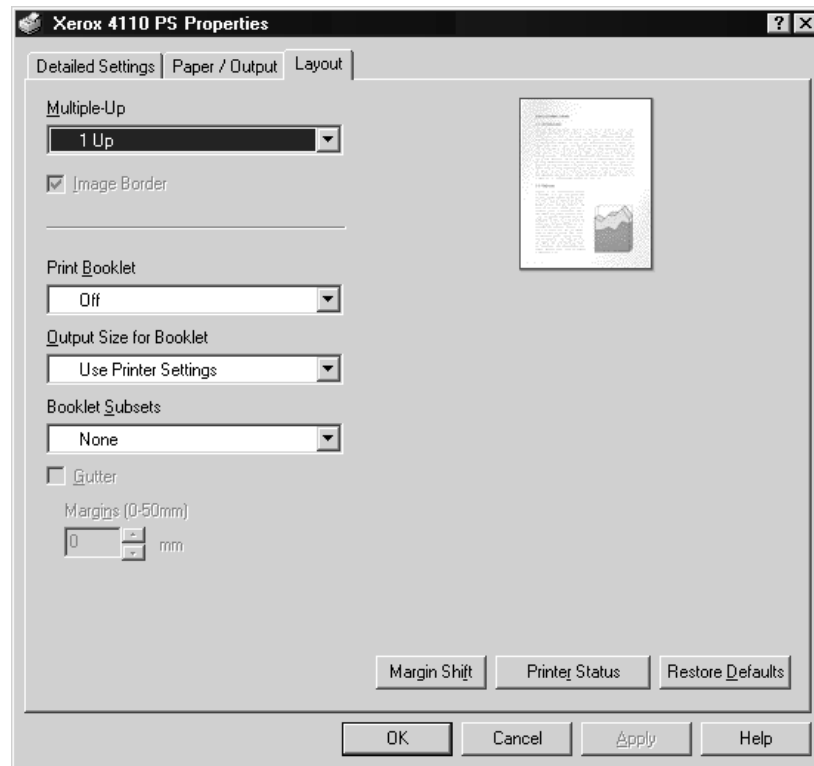
Printer Status

Open the Web browser and connect to CentreWare Internet Services for the printer to display the printer status.

To use CentreWare Internet Services, you must set the Internet Services on the printer to "Start."

Layout tab

This section describes the Layout tab settings tab.



NOTE: You can restore defaults by clicking [Restore Defaults].

Settings

Multi-Up Prints 2, 4, 6, 9 or 16 consecutive pages of the document on a single page of paper. This feature is known as "Multiple-Up." Select the number of pages to be printed on a single page from "2 Up," "4 Up," "6 Up," "9 Up," and "16 Up." The area of the paper to be printed is divided equally among the pages and the pages will be automatically rotated and reduced to fit into the page.

KEY POINT: If setting other than "Off" is selected in "Booklet Creation" on the "Layout" tab, only "1 Up" can be selected. You can check the result of the change in setting on the preview image at the top right of the screen.

Image Border Select this check box to add a border around every page of the original document when printed in Multiple-Up layout.

Print Booklet Specify the assembling and finishing methods for booklet creation. You can check the result of the change in setting on the preview image at the top right of the screen.



KEY POINT: "Booklet Creation" feature will only be available if "Automatically Select" or "Auto Paper Select (Type)" is selected in "Paper Source" on the "Paper/Output" tab.

Output Size for Booklet Specify the output size for booklet creation printing.



NOTE: When "Booklet Creation" is selected, only "AutoSelect Tray" and "Auto Paper Select (Type)" are available in "Paper Source" on the "Paper/Output" tab. Conversely, "Booklet Creation" feature is only available when "Automatically Select" or "Auto Paper Select (Type)" is selected in "Paper Source."

Booklet Subsets Specify the number of sheets in each subset when printing booklet in subsets. Select from "None," or "Every Sheet" to "Every "20 Sheets."

Margin Shift Clicking this button displays the "Margins" dialog box. Enter the position and the extent of the margin shift on the paper.

- **Position** - Specifies the margin shift (binding margin) position. The margin can be added to the left, right, top, or bottom of the paper. The margin positions change according to the paper orientation.



KEY POINT: If setting other than "Off" is selected in "Print Booklet" on the "Layout" tab, only "No Shift" will be available in "Position."

- **Side 1** - Specifies the margin on side 1 of the paper when using the "Margin Shift" function.
 - You can specify any value between 0 and 50 mm in units of 1mm using the keyboard or the up and down arrows.
 - You can use the keyboard or the up and down arrows to specify a value.

- **Side 2** - Specifies the margin on side 2 of the paper when using the "Margin Shift" function in 2-sided printing.
 - The margin shift position for side 2 is automatically set so that the margin is added to the same edge as side 1.
 - You can specify any value between 0 and 50 mm in units of 1mm using the keyboard or the up and down arrows.
 - You can use the keyboard or the up and down arrows to specify a value.

Printer Status

Open the Web browser and connect to CentreWare Internet Services for the printer to display the printer status.

To use CentreWare Internet Services, you must set the Internet Services on the printer to "Start."



NOTE: *This feature cannot be used when the printer is used as a local printer.*

4. Windows 2000/XP and Windows Server 2003

This chapter contains information on:

- The software included for Windows 2000, Windows XP, and Windows Server 2003
- Hardware and software requirements on page 4-2
- Adobe PS driver installation on page 4-3
- Print driver device options and print settings on page 4-10

About the software

This section describes the software for Windows 2000, Windows XP, and Windows Server 2003 included with the PostScript Driver Library CD-ROM.

Bundled software

The following items are included on the CD-ROM and are necessary when using the printer on Windows 2000, Windows XP and Windows Server 2003. Please read the “Readme.txt” file which contains cautionary notes about how to use the printer driver.

Xerox 4110/4590 PS Driver and PPD files

Xerox 4110/4590 PS Driver and PPD files (for Windows 2000, Windows XP and Windows Server 2003).

Adobe Acrobat Reader

Allows you to view and print PDF files on all major computing platforms.

Hardware/software requirements

The minimum system requirements for the Windows 2000, Windows XP, and Windows Server 2003 printer driver are described below.

Computer System	Personal computer which can run the Windows 2000, Windows XP, or Windows Server 2003 operating system.
Basic Software	<ul style="list-style-type: none">• Windows 2000 Professional• Windows 2000 Server• Windows 2000 Advanced Server• Windows XP Professional Edition• Windows XP Home Edition• Windows Server 2003

The Xerox 4110/4590 PS Printer Driver



KEY POINT: When installing the printer driver, ensure that you select the correct one (either 4110 or 4590).

Install Xerox 4110/4590 PS printer driver onto Windows 2000, Windows XP, and Windows Server 2003 by following the procedure below.

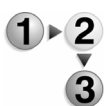
This section describes how to install the printer driver for Windows 2000, as an example.



NOTE 1: *It is possible to cancel installation of the printer driver by clicking [Cancel] in the dialog box displayed during installation. You can also click [Back] to delete the settings in that dialog box and return to the previous dialog box.*

NOTE 2: *If you want to set up Port 9100, refer to the System Administration Guide.*

Installation Procedure



1. Start Windows 2000.

NOTE: Log on as a Power User group member or an Administrator. Refer to the Windows 2000 documentation for details about the Power User group.

2. On the Start menu, point to Settings and click [Printers].
3. In the Printers window, double-click [Add Printer].
4. Click [Next].

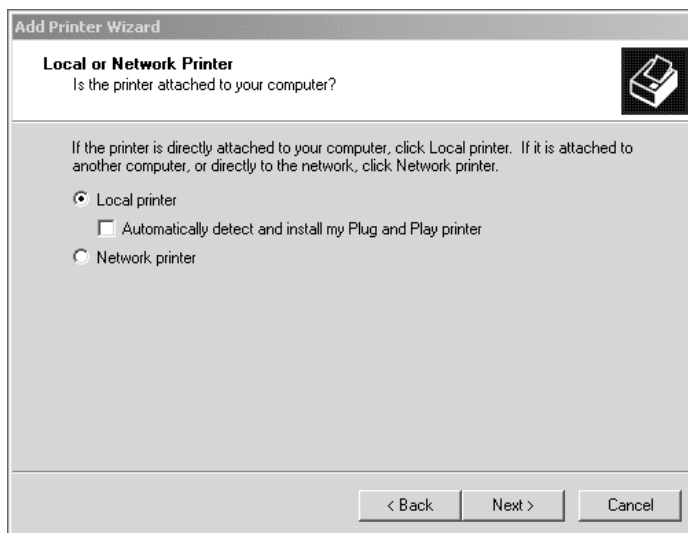


5. Select how the printer is connected to the computer and click [Next].

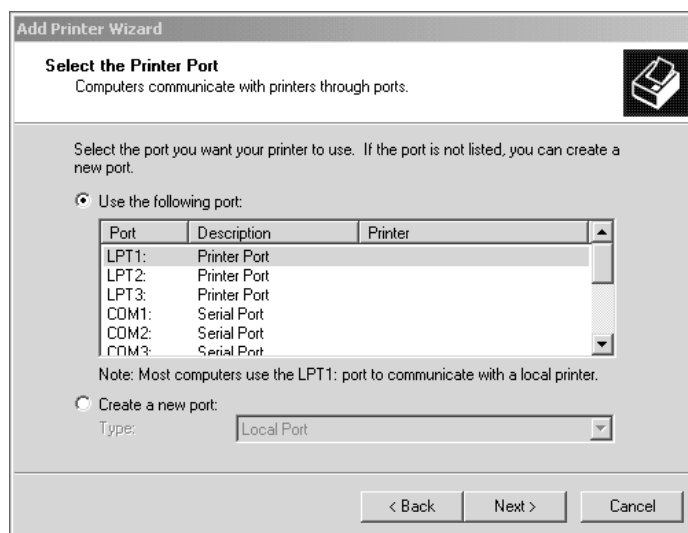
Select [Local printer] if the printer is connected directly to the computer or to the network in the TCP/IP(LPD) environment. Otherwise, select [Network printer]. The following is an example of a Local printer.

NOTE 1: When you select [Local printer], deselect the "Automatically detect and install my Plug and Play printer" check box.

NOTE 2: Specify the target printer in the Connect to printer dialog box if you selected [Network printer].



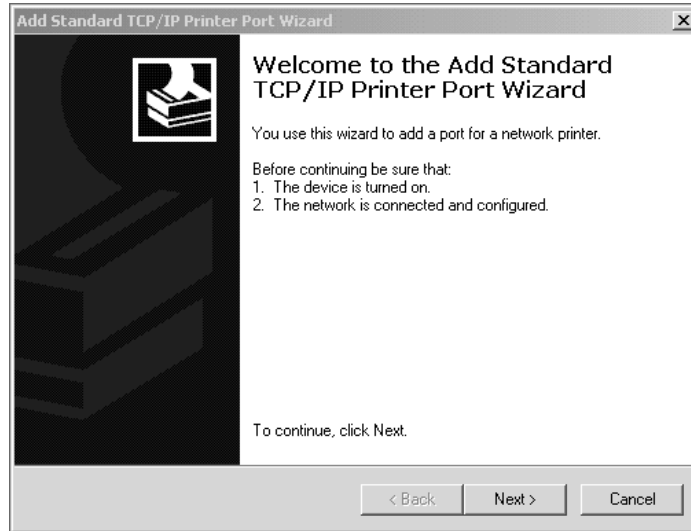
6. Select the port you are using and click [Next].



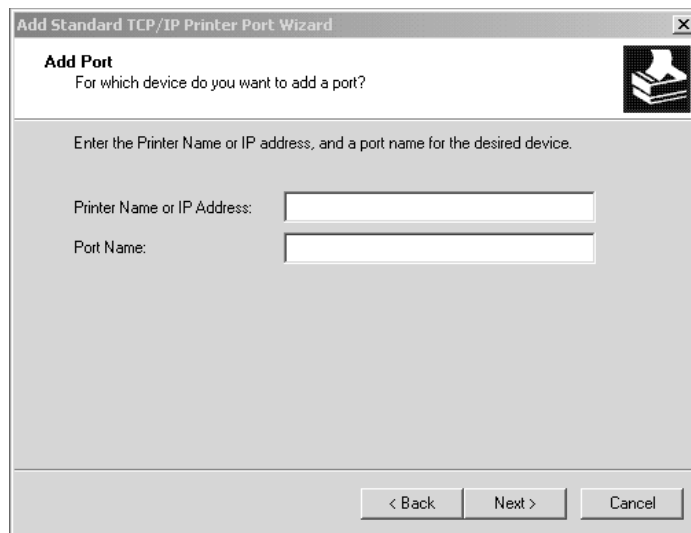
When the printer is connected in the TCP/IP(LPD) environment:

- a. Click [Create a new port].
- b. Select Standard TCP/IP Port in the Type list and click [Next].

- c. Click [Next].

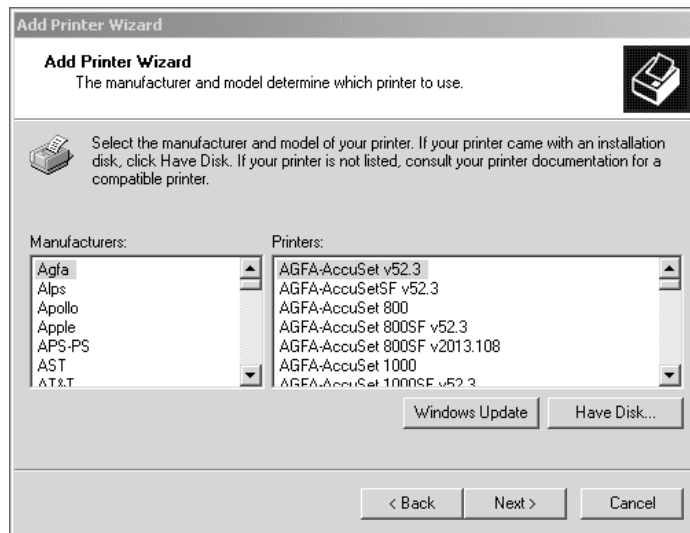


- d. Enter the IP address of the printer in Printer Name or IP Address, then click [Next].



- e. Click [Finish] in the dialog box that will be displayed.
7. Insert the PostScript Driver Library CD-ROM in the CD-ROM drive.

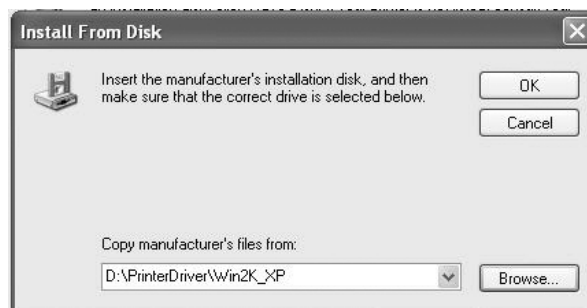
8. Click [Have Disk].

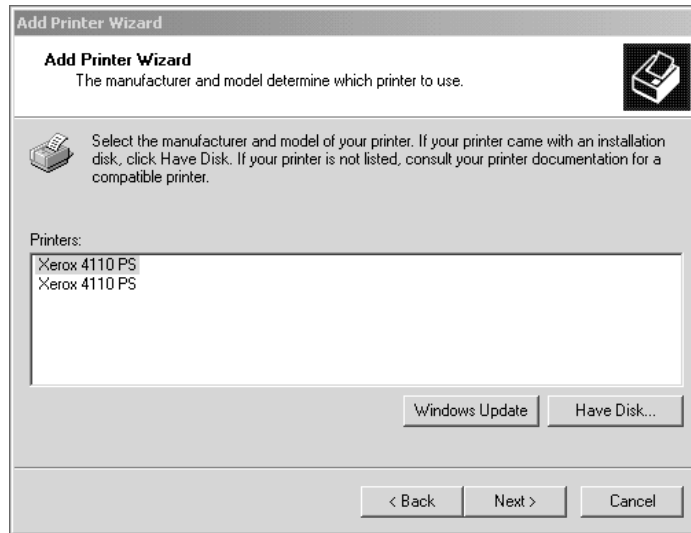
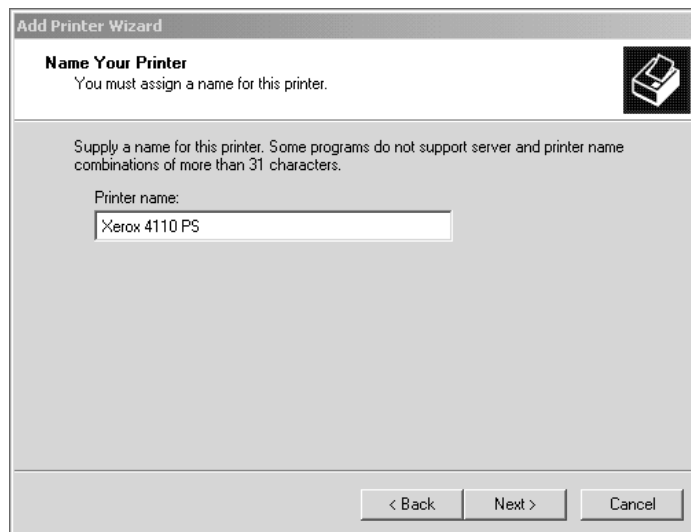


9. Enter "Drive Name:\PrinterDriver\Win2K_XP" in the "Copy manufacturer's files from:" box and click [OK].

In this example, we have used "D:" as the CD-ROM drive. If you are using a different drive for the CD-ROM, specify accordingly.

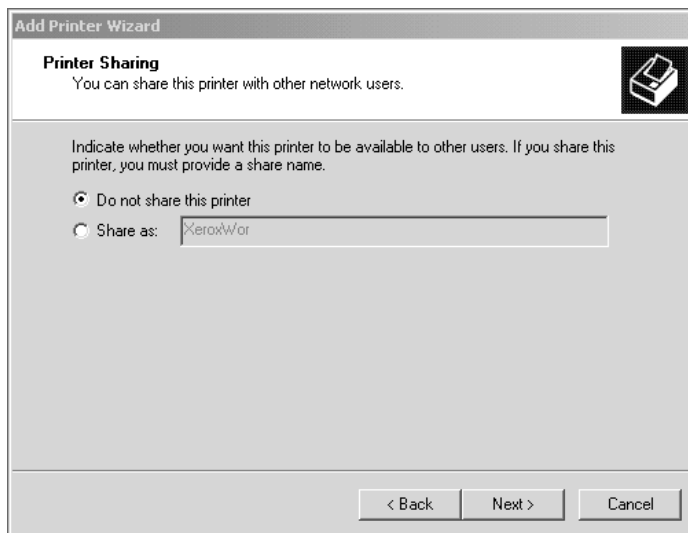
NOTE: Click [Browse] to specify a folder on the CD-ROM.



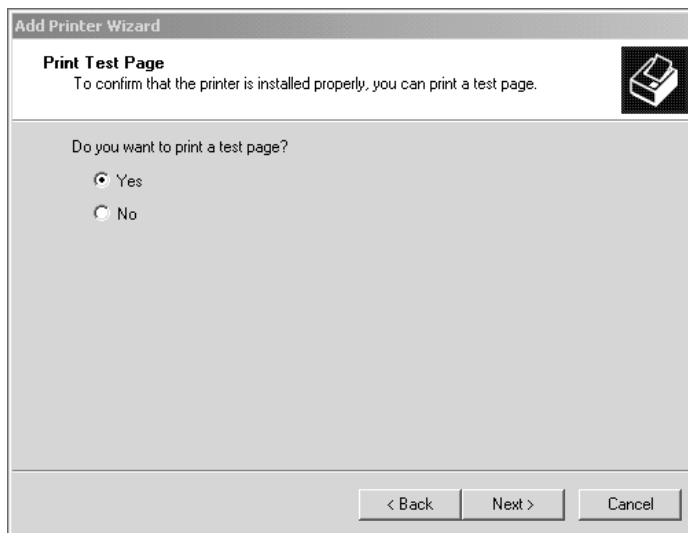
10. Select your printer model from the Printers list and click [Next].**11.** Enter the printer name, set whether you want to use it as the default printer, and click [Next].

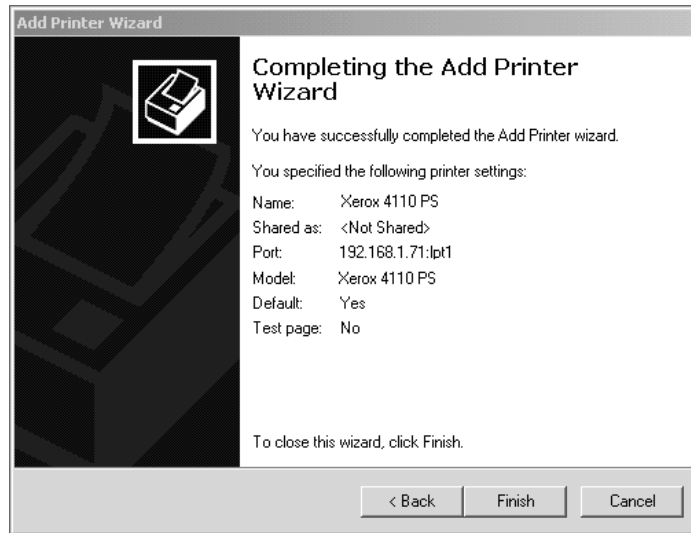
12. Select [Do not share this printer] and click [Next].

We recommend that you install the driver on each computer with the procedure appropriate to the operating system.



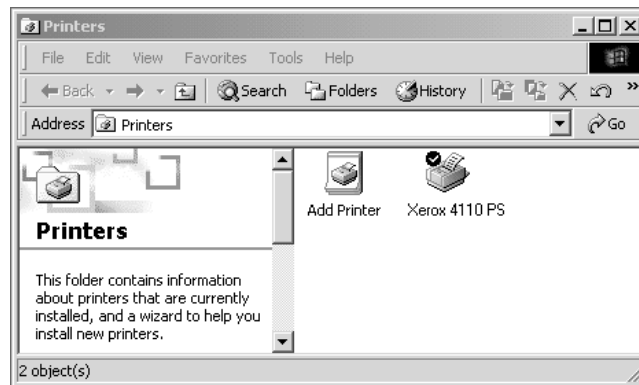
13. Specify whether or not to print a test page, then click [Next].



14. Click [Finish].

NOTE: If the dialog box “Digital Signature Not Found” appears, click [Yes] to continue the installation.

Installation begins.

15. Confirm that the printer has been added in the Printers window.

- This completes the installation of the printer driver. Remove the CD-ROM from the drive.
- See “Device options and print settings” on page 4-10 to configure the printer.
- Store your CD-ROM in a safe place.

Device options and print settings

This section describes printer specific settings for printer driver properties. For other items, refer to the Help.

- Installable Options in the Device Settings Tab
- Configuration Tab
- Detail Settings Tab
- Paper/Output Settings Tab



NOTE: You can also refer to *Help* for explanations of these settings. See “*Device Settings tab*” on page 4-11.

To view the Device Settings or Configuration tabs, select the printer in the Printers window, then click [Properties] on the File menu.

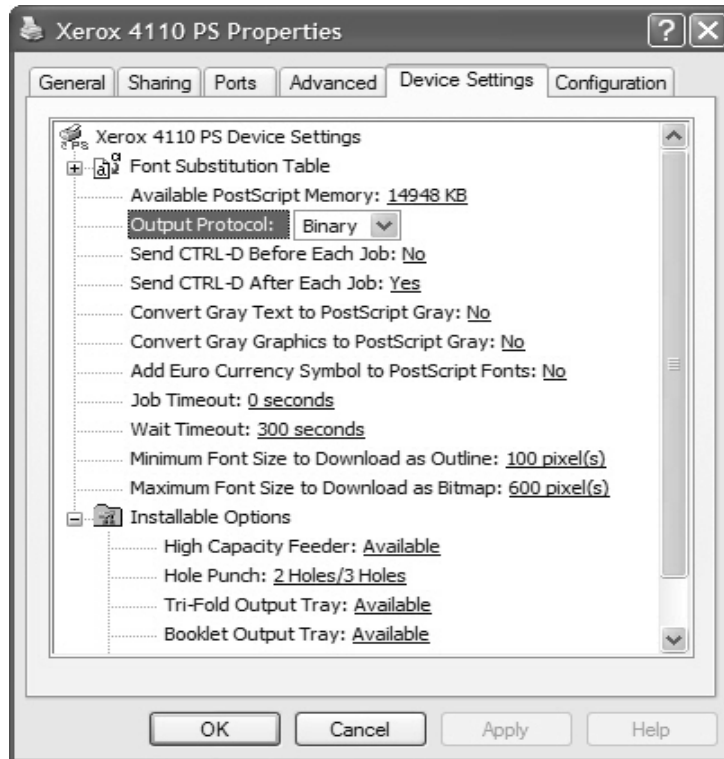
To view the Advanced Options dialog box, select the printer in the Printers window, then click [Printing Preferences] on the File menu. Click [Advanced] in the Layout screen.

To view the Output Settings tab, select the printer in the Printers window, then click [Printing Preferences] on the File menu.

Device Settings tab

This section describes installable options in the Device Settings tab. To print correctly, it is necessary to make the appropriate settings in this tab.

Select the items in Installable Options area and change the settings in the menu that appears on the right.



Settings

High Capacity Feeder Select "Available" if the High Capacity Feeder has been installed.

Hole Punch Specify the number of holes to punch on the paper. Select from "2 Holes/4 Holes" or "2 Holes/3 Holes."

Tri-Folding Output Tray Select "Available" if the Tri-Fold Output Tray is installed.

Booklet Output Tray Select "Available" if the Booklet Tray is installed.

Paper Size Settings Specify the paper size group for different locales to enable the selection of paper sizes common to that locale. The following groups of paper size categorized by locale are available: "AB Series," "AB Series (8K / 16K)," "AB Series (8 x 13)," "AB Series (8 x 13" / 8 x 14)," and "Inch Series." As the paper size settings will be set automatically in accordance with the relevant locale, it is usually not necessary to change this setting.

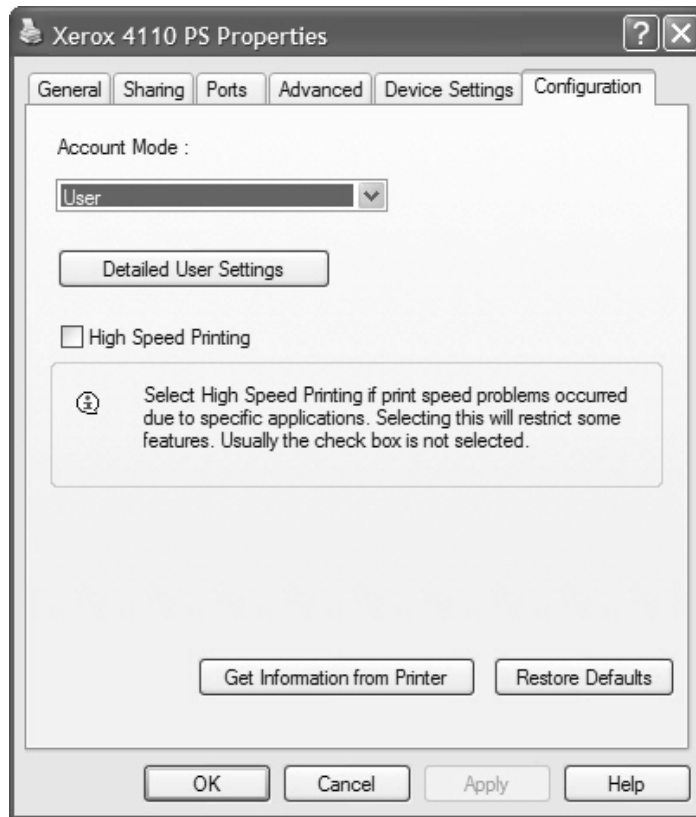
Switch Paper Size (8K/16K) Indicate your language preference to enable the set of 8K and 16K paper sizes that is best suited to your needs. If you select "Traditional Chinese," the dimensions of the 8K and 16K paper sizes are 267 x 388mm and 194 x 267mm respectively. If you select "Simplified Chinese," the dimensions will be 270 x 390mm and 195 x 270mm respectively.



NOTE: If "AB Series (8K/16K)" is not selected in "Paper Size Settings," both sets of 8K and 16K paper sizes will not be available despite the setting specified here.

Configuration tab

This section describes the settings of the Configuration tab.



NOTE: You can restore defaults by clicking [Restore Defaults].

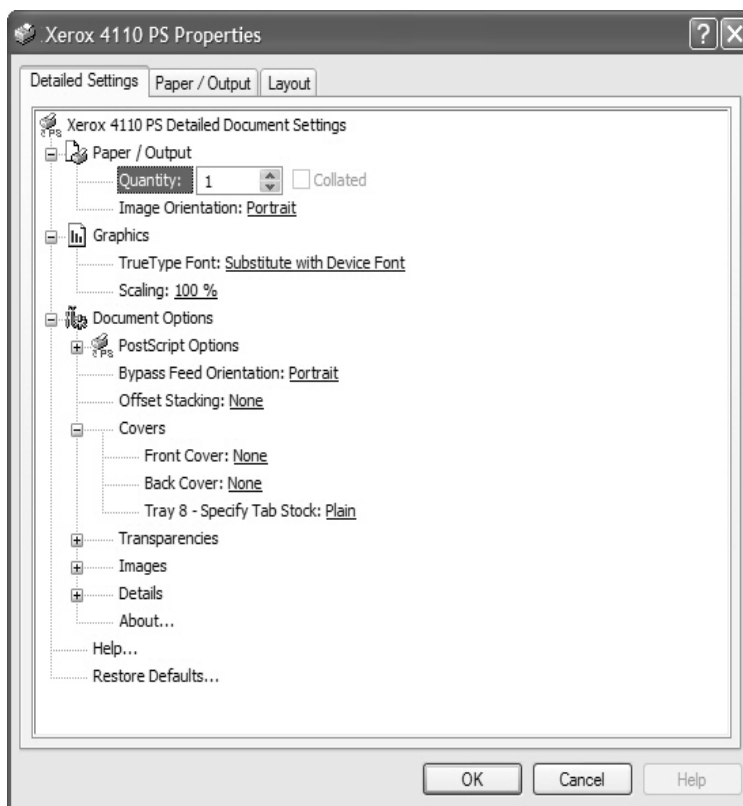
Settings

Account Mode	Specifies if all users or only System Administrators can change authentication related settings.
Detailed User Settings	<p>Sets the authentication information.</p> <ul style="list-style-type: none">• Use Default User Settings - The values set in this feature are used as the authentication parameters.<ul style="list-style-type: none">– Specify Job Owner Name - Select how to specify User ID.– Job Owner Name - Enter a User ID.– Password - Enter a Password that matches the User ID.– Account ID - Enter an Account ID.– Billing ID - Enter a User ID for Charge Print.– Password - Enter a Password that matches the Billing ID.• Prompt User for Settings - Select this feature to display the [Enter User Details] dialog-box each time you start printing. The user is then required to enter authentication information such as their User ID.<ul style="list-style-type: none">– Display Previous User Details - Select to store the user details entered in the [Enter User Details] dialog-box, and display the details in the box as a default next time.– Hide User ID(***) - Select to specify whether an account ID is to be displayed or hidden when it is entered.– Hide Account ID(***) - Select to specify whether an account ID is to be displayed or hidden when it is entered.
High Speed Printing	Set this feature to make improvements in print speed, when using an application that generates PostScript directly.
Get Information from Printer	Clicking [Get Information from Printer] when the machine is used as a network printer verifies the printer option installation state using the print port to which the printer is connected, and reflects this in the Hardware Options setting.

Detailed Settings tab

This section describes the settings of the Detail Settings tab.

Select the items from Printer Features and change them on the menu displayed to the right.



Settings

- | | |
|--------------------------------|---|
| Bypass Feed Orientation | Specifies the paper orientation when printing from the bypass tray. When feeding the short edge of the paper first, select [Landscape]. When feeding the long edge of the paper, select [Portrait]. |
| Offset Stacking | The position of individual jobs or sets of copies are shifted to either side of the output tray to enable easy separation. |

Covers Specifies the settings related to Covers.



NOTE: *The cover cannot be printed.*

- **Front Cover** - Specify whether to add a front cover to the printouts. Select the paper tray for feeding the front cover sheets.
- **Back Cover** - Specify whether to add a back cover to the printouts. Select the paper tray for feeding the back cover sheets.
- **Tray 8 - Specify Tab Stock** - Specify whether tab stock is being loaded in tray 8. Select either "Plain" or "Tab Stock."

Transparencies Set up separators to be inserted between transparencies.

- **Feed Separators from** - Specifies the paper tray that transparency dividers are to be fed from. When [Auto] is selected, the tray set on the machine is used as the feed destination.
- **Print on Separators** - Specifies whether or not to print on the transparency dividers as well as the transparency.

Images Set up image-related settings.

- **Print Mode** - Specifies whether to give priority to the print speed or the image quality.
- **Halftone** - Select the halftone settings for printing.
 - Select [Fine Dots] for the small size halftone dot commonly used in PostScript.
 - Select [Thick Dots] for coarser dots than the Fine Dots setting.
 - Select [Type 3] for the same halftone setting that is used in PCL.
- **Image Enhancement** - Specifies whether or not to use the Image Enhancement function. Selecting [On] smooths out boundaries when printing. This reduces jagged edges by artificially increasing the resolution of the image. When printing a bitmapped image composed of coarse halftone dots, smooth color or grayscale gradation is impossible in certain situations. In this case, select [Off].

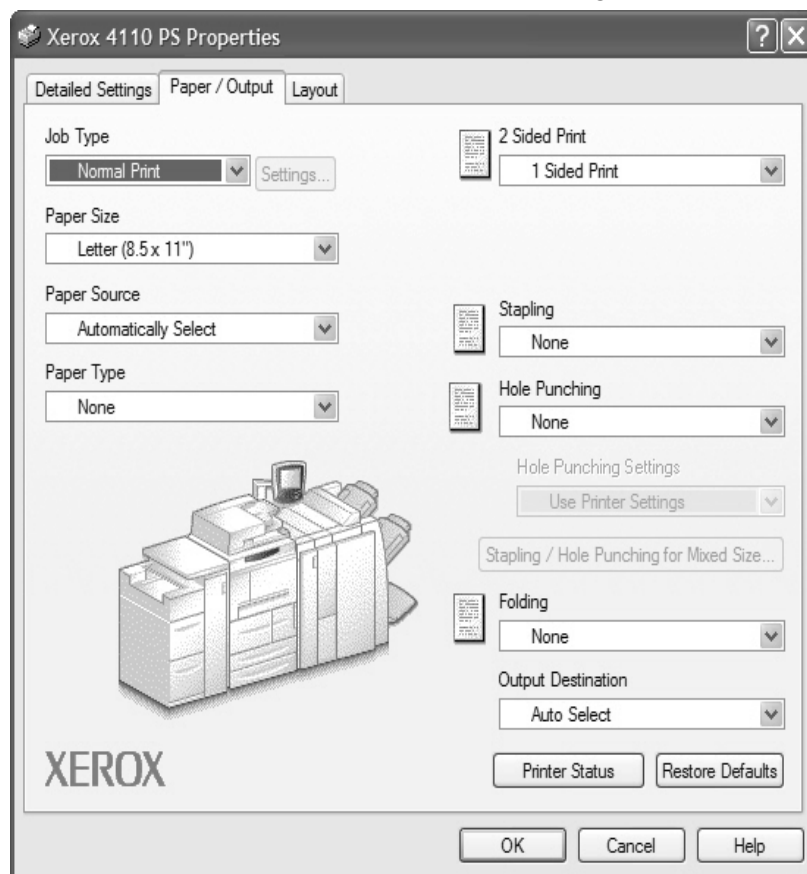
- Details** Set up other printing options.
- **Image Rotation (180deg)** - Set the checkbox to rotate the prints by 180°. Default is [Off].
 - **Double Print** - Enable this feature to repeatedly print one page twice on a paper with a bigger size than the original. You can use Double Print feature if you have set the zoom ratio to 100% with the following paper size and output size settings.
 - Paper Size
 - A4
 - A5
 - B5
 - Folio (8.5 x 11")
 - Output Size
 - A3
 - A4
 - B4
 - Ledger (11 x 17")
 - **Skip Blank Pages** - Specify whether to skip blank pages when printing documents that consist of blank pages.
 - **Draft Mode** - Specifies whether or not to reduce the amount of toner used when printing drafts. When [On] is selected, the overall printed page becomes lighter. This is best for printing documents when high print quality is not necessary.
 - **Banner Sheet** - Specifies whether or not to add a banner sheet to printed output.
 - When [Use Printer Settings] is selected, the printer settings are used.
 - When [Printer Start Page] is selected, outputs the banner sheet using the start-sheet.
 - **E-mail Job Confirmation** - Specifies whether or not to use the Mail Notify feature to notify the end of the print job via e-mail. Default is [Off].
 - **Enter Address** - Specifies the e-mail address for the Mail Notify feature.
 - **Substitute Tray** - Specifies what action to take when the paper for the print size is not loaded in the machine.
 - **Tab Margin Shift** - Selecting [On] shifts the image by 13 mm during printing on the printer, and prints text on the tab portion of the tab stock. When preparing a document, place text on the part of the document where the tab will be located (assuming that the entire image will be shifted by 13 mm).

The tab is on the side of the tab stock that is output first.
 - **Custom Paper Auto Orientation** - Specifies whether or not to correct the orientation of the custom paper.
 - **Print Mixed Size Originals** - Controls the orientation of the second-side image when printing double-sided.
- About** Click the "About" button to display the "About" dialog box. The version number and copyright description for this print driver will be displayed.

Help To display Help, click the "Contents" button at the top left of the screen. You can find detailed descriptions on the content items in Help or enter keywords to search for needed information.

Paper/Output tab

This section describes the Paper/Output settings tab.



NOTE: You can restore defaults by clicking [Restore Defaults].

Settings

- Job Type** You can select Normal Print or specify the print function for Secure Print, Sample Print, and Delayed Print. To use Secure Print, Sample Print, or Delayed Print feature, input the User ID and password for Print Type in the Configuration tab. The password entered appears as asterisks(*).
- **Normal Print** - Select when you do not want to output secure prints, sample prints, or delayed prints.
 - **Secure Print** - Secure Print temporarily stores print jobs in the printer and then prints them when print instructions are received from the control panel. Select when you want to output secure prints.
 - **User ID** - Displays the User ID for Job Type. The user ID displayed is the User ID specified on the Configuration tab. This option can only be selected when the setting on the Configuration tab has been completed. This is a display-only item and cannot be changed here.
 - **Password** - Displays the password for Secure Print as specified in the Configuration tab. Each digit entered appears as an asterisk (*). This option can only be selected when the setting on the Configuration tab has been completed. This is a display-only item and cannot be changed here.
 - **Retrieve Document Name** - If [Auto Retrieve] is selected, the document name will be obtained from the application that sends the print command. No manual entry is allowed. Document names that exceed 24 characters are truncated.
 - **Document Name** - When “Enter Document Name” is selected in the Retrieve Document Name list, a document name up to 24 alphanumeric characters.
 - **Sample Print** - Sample Print outputs only one copy when multiple copies are specified. If there is no problem, the remaining sets can be printed. Select when you want to output sample prints.



NOTE: The Collated setting must be selected in the Page Setup tab when using Print Type.

- **Delayed Print** - Delayed Print temporarily stores print jobs in the printer, and then prints them at the scheduled time. Select when you want to output delayed prints.

See the On-line Help for details on the operation of the printer.

- **Start Print Time** - Specifies the time when a Delayed Print job will be printed. Place the cursor in the hour or minute box and press the up or down triangle to specify the start time. You can also set the time by entering the time directly into the boxes. The default setting is 00:00.

Paper Size	Select the paper size of the file to be printed.
Paper Source	Select the paper tray to be used for printing.
Paper Type	Select the paper type to be used for printing.
2-sided Print	Performs 2-sided printing. Select either "Flip on long edge" or "Flip on short edge" for 2-sided printing. Select any one of these options as required. In "Flip on long edge" and "Flip on short edge," the side 1 and side 2 images are printed such that when rotated with the long edge and short edge respectively as axis, they are pointing in the same direction.
Stapling	Select the stapling position. The stapling position specified is based on the printing data. If the stapling position is incorrect, refer to the PostScript Kit manual and adjust the Stapling setting accordingly.



NOTE: Limitations for stapling mixed size output may apply. Stapling for mixed size output is not available in the following situations:

- When a setting other than "1 Up" is selected for "Multiple-Up" in the "Layout" tab
- When a setting other than "Off" is selected for "Booklet Creation" in the "Layout" tab
- When "Double Print" is set to "On" under "Details" in the "Detailed Settings" tab
- When a size other than "A3," "B4," "A4," "B5," "8.5 x 11," "11 x 17," "16K (267 x 194mm) / 8K (267 x 388mm)," and "16K (270 x 195mm) / 8K (270 x 390mm)" is selected
- When a setting other than "None" or "On (Mixed Sizes)" is selected for "Hole Punching" in the "Paper / Output" tab

Hole Punching

Select the punching position. The holes are made based on the output orientation of the paper. As a result, the holes may not be punched correctly depending on the position of the image.



NOTE: Moreover, there are limitations for punching holes on mixed size output. Hole punching for mixed size output is not available in the following situations:

- When a setting other than "1 Up" is selected for "Multiple-Up" in the "Layout" tab
- When a setting other than "Off" is selected for "Booklet Creation" in the "Layout" tab
- When "Double Print" is set to "On" under "Details" in the "Detailed Settings" tab
- When a size other than "A3," "B4," "A4," "B5," "8.5 x 11," "11 x 17," "16K (267 x 194mm) / 8K (267 x 388mm)," and "16K (270 x 195mm) / 8K (270 x 390mm)" is selected
- When a setting other than "None," "1 Staple (Mixed Sizes)," or "2 Staples (Mixed Sizes)" is selected for "Stapling" in the "Paper / Output" tab

Hole Punching - Specify the number of holes to punch. Select from "Use Printer Settings," "2 Holes," or "4 Holes."



NOTE: If "3 Holes" is selected for "Hole Puncher Setup" on the "Device Settings" tab, only "Use Printer Settings" will be available for selection. "Device Settings" tab is displayed on the print driver screen when "Properties" is selected from the menu of the printer icon in the "Printers" folder.

Stapling/Hole Punching for Mixed Size Output

Click this button to display the "Stapling/Hole Punching for Mixed Size Output" dialog box. You can specify the settings for stapling or punching for mixed sized documents.



NOTE: There are limitations for stapling mixed size output. Stapling for mixed size output is not available in the following situations:

- When a setting other than "1 Up" is selected for "Multiple-Up" in the "Layout" tab
- When a setting other than "Off" is selected for "Print Booklet" in the "Layout" tab
- When "Double Print" is set to "On" under "Details" in the "Detailed Settings" tab

- When a size other than "A3," "B4," "A4," "B5," "8.5 x 11," "11 x 17," "16K (267 x 194mm) / 8K (267 x 388mm)," and "16K (270 x 195mm) / 8K (270 x 390mm)" is selected
- When a setting other than "None" or "On (Mixed Sizes)" is selected for "Hole Punching" in the "Paper / Output" tab
- When a setting other than "None," "1 Staple (Mixed Sizes)," or "2 Staples (Mixed Sizes)" is selected for "Stapling" in the "Paper / Output" tab
 - **Stapling** - Specify the position to staple mixed size originals. Select "1 Staple (Mixed Sizes)" or "2 Staples (Mixed Sizes)."



KEY POINT: If "Double Print" is set to "On" under "Details" in the "Detailed Settings" tab, the Stapling feature will not be available.

- **Hole Punching** - Select "On (Mixed Sizes)" to enable hole punching feature for mixed size originals.



KEY POINT: When "Double Print" is set to "On" under "Details" in the "Detailed Settings" tab, Hole Punching feature will not be available.

- **Hole Punching** - Specify the number of holes to punch. Select from "Use Printer Settings," "2 Holes" or "4 Holes."



NOTE: If "3 Holes" is selected in "Hole Punching Settings" on the "Device Settings" tab, only "Use Printer Settings" will be available for selection.

Folding (Z Folding)

If Tri-Fold Output Tray is installed, select the check box to perform Z folding for Mixed Size Documents.

- **Image Rotation (180deg)** - Turn the mixed size originals by 180 degrees and print.
- Select "Portrait," "Landscape," or "Portrait & Landscape (For envelopes)."
- If "2 Up" or more is selected in "Multiple-Up" on the "Layout" tab, individual pages will be rotated and printed.

- **First Page** - Specifies the "Paper Size" and "Image Orientation" of the first page of the mixed size document.
 - **Paper Size (First Page)** - Specifies the paper size of the first page of the document.

The paper size combinations for mixed size originals are "A3 and A4," "B4 and B5," "8.5 x 11 and 11 x 17" and "16K and 8K." "Paper Size" of the "Mixed Pages" will automatically be specified based on this setting.
 - **Image Orientation (First Page)** - Specifies the image orientation of the first page of the document.

Select either "Portrait" or "Landscape."
- **Mixed Pages** - Specifies the "Paper Size" and "Image Orientation" of the mixed pages.
 - **Paper Size (Mixed Pages)** - Displays the paper size of the mixed pages.

The paper size will automatically be specified based on the "Paper Size" settings of the first page.
 - **Image Orientation (Mixed Pages)** - Specifies the image orientation of the mixed pages.

Select either "Portrait" or "Landscape."

Folding

Select the folding method.

NOTE 1: "Z Fold", "Z Tri-Fold," and "C Tri-Fold" will be available when the Tri-Fold Output Tray is installed and set up in the "Device Settings" tab.

NOTE 2: "Bi-Fold" is available when a Booklet Tray is installed and set up in the "Device Settings" tab.

Output Destination

Select the paper output destination. Select "Auto Select" or "Finisher Tray (Large Output)" from the "Output Destination" menu.

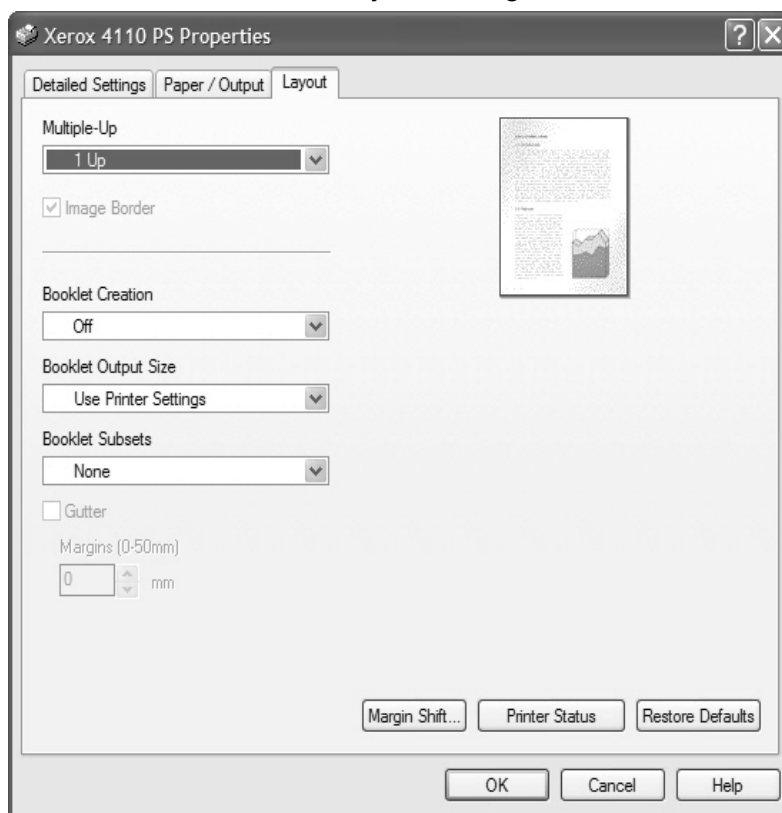
Printer Status

Open the Web browser and connect to CentreWare Internet Services for the printer to display the printer status.

To use CentreWare Internet Services, you must set the Internet Services on the printer to "Start."

Layout tab

This section describes the Layout settings tab.



NOTE: You can restore defaults by clicking [Restore Defaults].

Settings

Multi-Up

Prints 2, 4, 6, 9 or 16 consecutive pages of the document on a single page of paper. This feature is known as "Multiple-Up."

Select the number of pages to be printed on a single page from "2 Up," "4 Up," "6 Up," "9 Up," and "16 Up." The area of the paper to be printed is divided equally among the pages and the pages will be automatically rotated and reduced to fit into the page.



KEY POINT: If setting other than "Off" is selected in "Booklet Creation" on the "Layout" tab, only "1 Up" can be selected. You can check the result of the change in setting on the preview image at the top right of the screen.

Image Border

Select this check box to add a border around every page of the original document when printed in Multiple-Up layout.

Print Booklet

Specify the assembling and finishing methods for booklet creation. You can check the result of the change in setting on the preview image at the top right of the screen.



KEY POINT: "Booklet Creation" feature will only be available if "Automatically Select" or "Auto Paper Select (Type)" is selected in "Paper Source" on the "Paper / Output" tab.

Output Size for Booklet

Specify the output size for booklet creation printing.



NOTE: When "Booklet Creation" is selected, only "AutoSelect Tray" and "Auto Paper Select (Type)" are available in "Paper Source" on the "Paper / Output" tab. Conversely, "Booklet Creation" feature is only available when "Automatically Select" or "Auto Paper Select (Type)" is selected in "Paper Source."

Booklet Subsets

Specify the number of sheets in each subset when printing booklet in subsets. Select from "None," or "Every Sheet" to "Every 20 Sheets."

Gutter Select this box to add a Gutter Margin.

Margin Shift Clicking this button displays the "Margins" dialog box. Enter the position and the extent of the margin shift on the paper.

- **Position** - Specifies the margin shift (binding margin) position. The margin can be added to the left, right, top, or bottom of the paper. The margin positions change according to the paper orientation.



KEY POINT: If setting other than "Off" is selected in "Print Booklet" on the "Layout" tab, only "No Shift" will be available in "Position."

- **Side 1** - Specifies the margin on side 1 of the paper when using the "Margin Shift" function. You can specify any value between 0 and 50 mm in units of 1mm using the keyboard or the up and down arrows.
- **Side 2** - Specifies the margin on side 2 of the paper when using the "Margin Shift" function in 2-sided printing.
 - The margin shift position for side 2 is automatically set so that the margin is added to the same edge as side 1.
 - You can specify any value between 0 and 50 mm in units of 1mm using the keyboard or the up and down arrows.

Printer Status Open a Web browser and connect to CentreWare Internet Services for the printer to display the printer status.

To use CentreWare Internet Services, you must set the Internet Services on the printer to "Start."



NOTE: *This feature cannot be used when the printer is used as a local printer.*

5. Macintosh computers

This chapter contains information on:

- The software included for Macintosh OS 9.x or earlier, and Macintosh OS X
- Hardware and software requirements on page 5-2
- Adobe PS driver installation on page 5-3
- Print driver device options and print settings on page 5-11
- Screen font installation on page 5-23

About the software

This section describes the Macintosh software that is included on the PostScript Driver Library CD-ROM.



NOTE: When using AppleTalk protocol to print from Macintosh, set the EtherTalk port to *Enable* on the Control Panel.

Bundled software

Insert the CD-ROM and double-click the Adobe icon to display the window. The following items are contained in the folder:

**AdobePS Printer Driver
(ver. 8.5.1, 8.7.0, and 8.8)
and PPD files**

Adobe PostScript driver and PPD files (for Macintosh).

Xerox PPD Installer

The PPD file installer for Mac OS X, 10.3.

Xerox PS Utility

Enables you to define your printer settings.

Adobe Screen Fonts

Contains 117 PostScript fonts and 19 TrueType fonts, which are standard for PostScript 3 printers. In addition, 37 PostScript fonts for the Central European (CE) character set are included.

ATM (Adobe Type Manager) (ver. 4.5.2)	Helps you to install typefaces and activate and manage your fonts.
Adobe Acrobat Reader	Allows you to view and print PDF files on all major computing platforms.
Readme.txt	Contains cautionary notes about how to use the printer driver. Ensure you read this before use.

Hardware/software requirements

The minimum system requirements for the Macintosh printer driver and the utility are described below.

- | | |
|------------------------|---|
| Computer system | <ul style="list-style-type: none">• Macintosh• Power Macintosh |
| Basic software | <ul style="list-style-type: none">• For AdobePS 8.5.1 - Mac OS 7.1 through 8.1• For AdobePS 8.7 - Mac OS 8.5 and 8.5.1• For AdobePS 8.8 - Mac OS 8.6 through 9.2.2• For PPD Installer - Mac OS X 10.2.x• For PPD Installer - Mac OS X 10.3.3• For Xerox PS Utility - Mac OS 7.1 or later |



NOTE: When using Mac OS X, launch the Classic environment to run the applications.

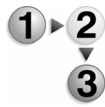
AdobePS Printer Driver



KEY POINT: When installing the printer driver, ensure that you select the correct one (either 4110 or 4590).

This section describes how to install the Adobe printer driver and how to set the printer driver for this machine. There are two steps to install the printer driver. Firstly, use the installer enclosed on the CD-ROM to install the printer to the Macintosh. Then, configure the printer driver according to the printer used.

Installation procedure (Mac OS 9.x or earlier)



This section describes the procedures for installing the AdobePS printer driver.

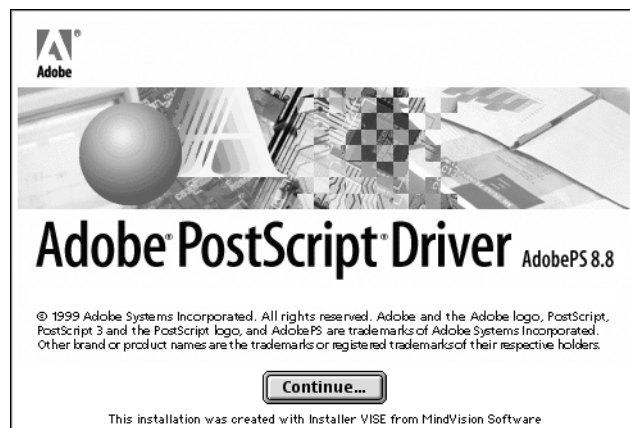


NOTE: The procedure to install AdobePS 8.8 is shown here as an example.

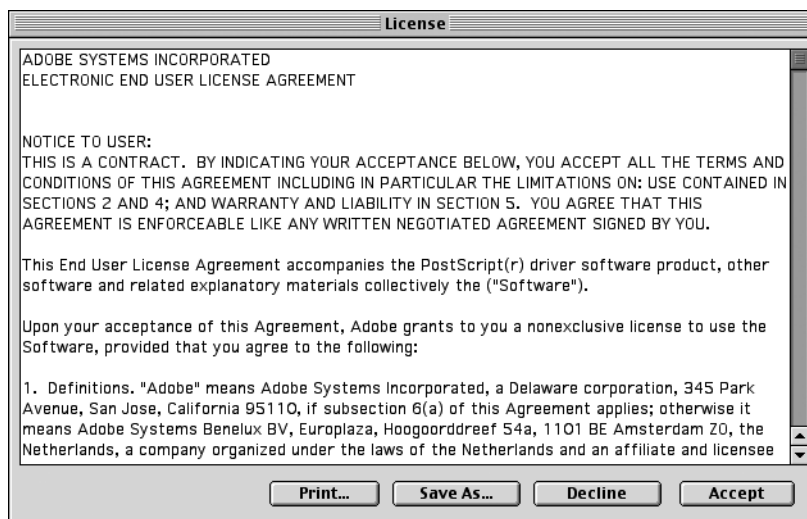
1. Insert the PostScript Driver Library CD-ROM in the CD-ROM drive.

The Adobe icon appears on the desktop.

2. Double-click [Adobe].
3. Double-click the [4100] folder and then the “AdobePS880” folder.
4. Double-click [AdobePS Installer 8.8].
5. Click [Continue].

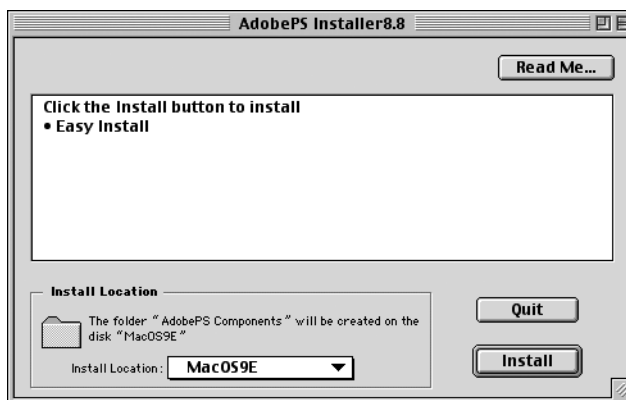


6. Read through the license agreement carefully and if you have no objections to it, click [Accept].



Read the Read Me displayed, then click [Continue].

7. Confirm the Install Location and change it if necessary, then click [Install].

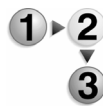


- a. Installation begins.
 - b. When installation is complete, a dialog box appears.
8. Click [Continue] or [Quit].



- This completes the installation.
- Proceed to “Setting the Printer Driver (Mac OS 9.x or earlier)” on page 5-5 to continue.

Setting the Printer Driver (Mac OS 9.x or earlier)



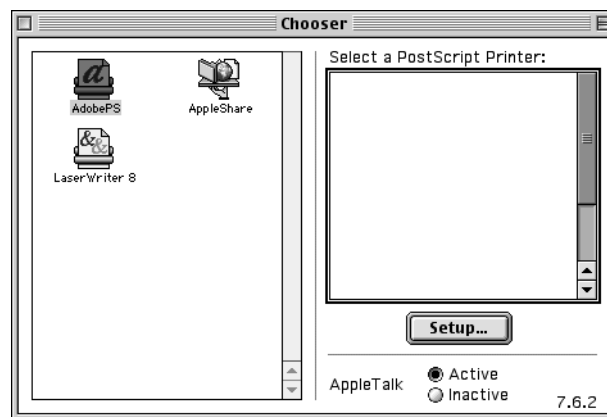
When you finish installing the AdobePS printer driver, set the PostScript Printer Description (PPD) file for this machine.

The printer driver controls the functions of this machine based on the information in the PPD file.

1. Check that the EtherTalk port on the Xerox 4110 Copier/Printer is set to Enable.

You can check the EtherTalk settings in the System Settings List. See the User Guide for details about how to print the System Settings List.

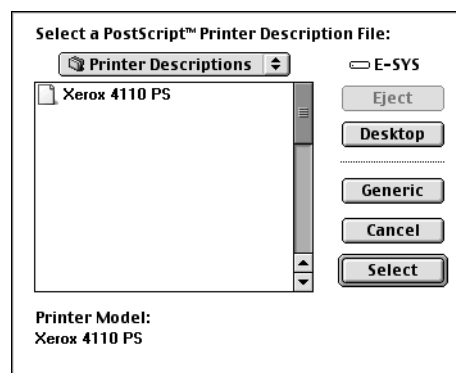
2. On the Macintosh computer, from the Apple menu select [Chooser], then click [AdobePS].
3. Select your printer from the Select a PostScript Printer list box, which appears to the right of the Chooser, then click [Setup].



The Macintosh computer automatically searches for the printer and sets the PPD file.

If the search for the PPD file is not automatically performed:

- a) Click [Select PPD].
- b) Select your printer model in the list, then click [Select].



The PPD file for this machine is set.



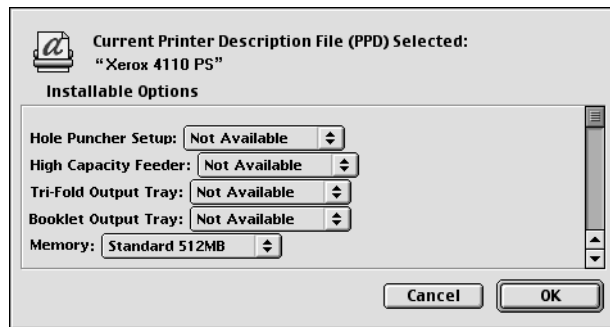
4. Click [Configure] to set the options.

See "Printer options" on page 5-11 for details about the options.



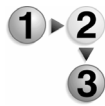
NOTE 1: You can change the print settings after you install the printer driver.

NOTE 2: To use the options, it is necessary to set Configure. Always set this according to the configuration of your machine. Also, Installable Options will usually be set automatically according to the bi-directional communications of this machine. You do not have to change the settings.



5. Click [OK]. Click [OK] once more in the screen displayed.
6. Close the Chooser.

Installation procedure (Mac OS X)



Use the following procedure to install the PostScript Printer Description (PPD) file for your Macintosh computer. The Mac OS (operating system) X version 10.2.x is used as the example throughout this procedure.



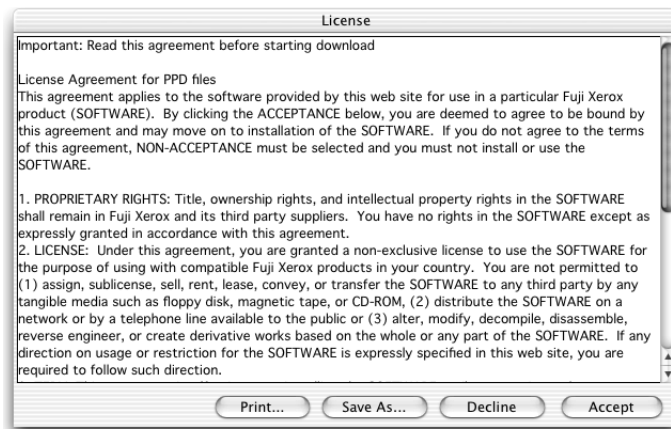
NOTE: The printer driver does not need to be installed on the Mac OS X. It uses the Adobe PostScript driver that is provided with the operating system.

1. Insert the PostScript Driver Library CD-ROM in the CD-ROM drive. The PS icon appears on the desktop.
2. Double-click [PS]. The PS window opens.
3. Open the [Mac] folder.
4. Open the [Mac OS X] folder. The Mac OS X window opens.
5. Double-click [Xerox PPD Installer]. The installer starts and the Authenticate window opens.
6. Enter the Administrator user name and password, then click [OK].

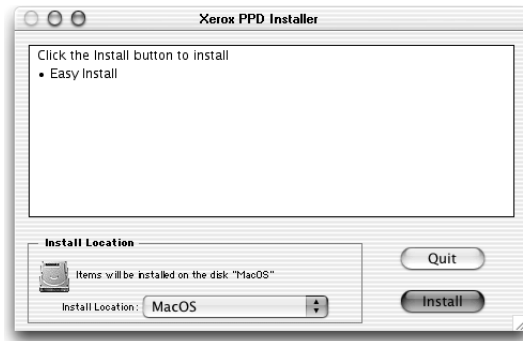


The License screen opens.

7. Read through the license agreement carefully and, if you have no objections to it, click [Accept].



8. Confirm the Install Location and change it if necessary, then click [Install].



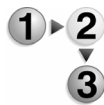
9. Click [Quit].



This completes the installation.

Proceed to “Adding a Printer (Mac OS X)” on page 5-8 to continue.

Adding a Printer (Mac OS X)



After the PPD file has been installed, set the PPD file for the printer driver and then add the printer. The printer driver controls the printer functions based on the information in the PPD file. Use the following procedure to add a printer. This procedure uses Macintosh OS X v10.2.8 as its example.



NOTE: Menu items and procedures may vary slightly for Mac OS X v10.3.3 or other operating system versions.

1. Check that the port on the Xerox 4110 Copier / Printer is set to Enable.

- When using AppleTalk, set the EtherTalk port to Enable.
- When using IP Printing, set the LPD port to Enable.

You can check the EtherTalk and LPD settings in the System Settings List. See the User Guide for details about how to print the “System Settings List.”

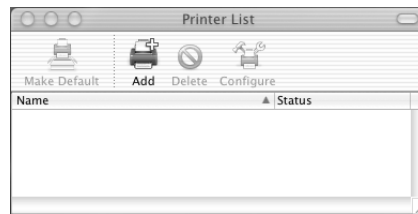
2. Start [Print Center].



NOTE: You can find Print Center in the Utilities folder in the Applications folder. For Mac OS X 10.3.3, open the Printer Setup Utility in the Utilities folder in the Applications folder.

The Printer List screen opens.

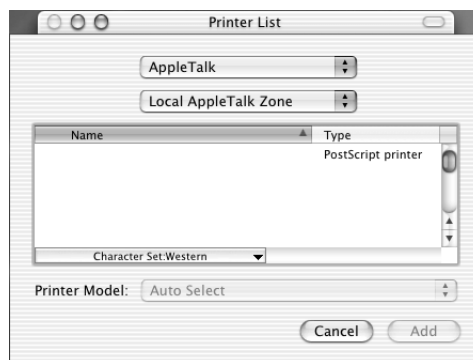
3. Click [Add].



4. Select the protocol used to connect the printer.

When using Apple Talk

1. Select [Apple Talk] from the menu, and specify the zone for the printer being used.



2. Select the printer you are using from the list.
3. Select [Auto Select] from Printer Model.
4. Click [Add].

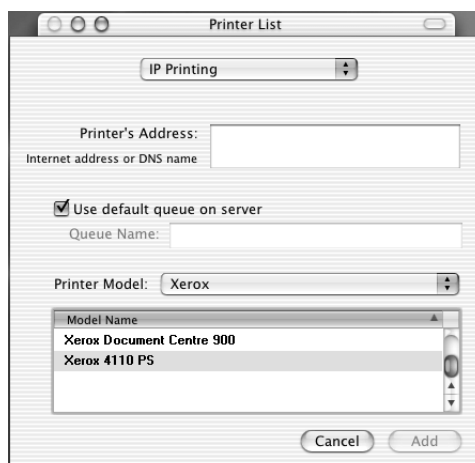
After clicking [Add], a message may appear telling you that multiple printer files were found. Select the PPD file you will use and click [Add].

When using IP Printing

1. Select [IP Printing] from the menu, and enter the IP address for the printer being used in Printer's Address.

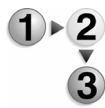


NOTE: For Mac OS X v10.3.3, select LPD/LPR for printer type.



2. Select [Xerox 4110 PS] from Printer Model, and select the printer to be used.
3. Click [Add].

Printer options



1. Click [Printers] on the Print Center menu bar, and select [Show Info], or

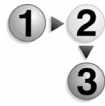
For Mac OS X v10.3.3, click [Printers] on the Printer Setup Utility menu bar, then select [Show Info].

2. Select [Installable Options], and select the options that have been installed on the printer. See “Printer options” on page 5-11 for details about the options.



This section describes the Configure dialog in the Chooser and the Printer Specific Options of the printer driver.

For Mac OS 9.x and earlier



This section describes installable options for Mac OS 9.x and earlier operating systems.

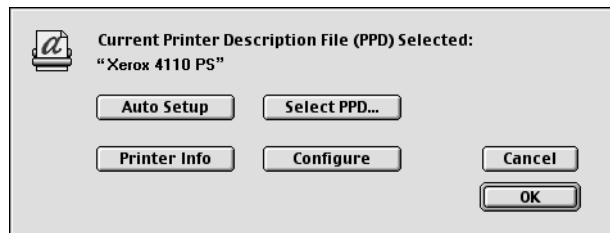


NOTE: Usually, installable options are automatically set according to the bi-directional communications of this machine. You do not have to change the settings.

1. Select the printer using the Chooser and click [Setup].

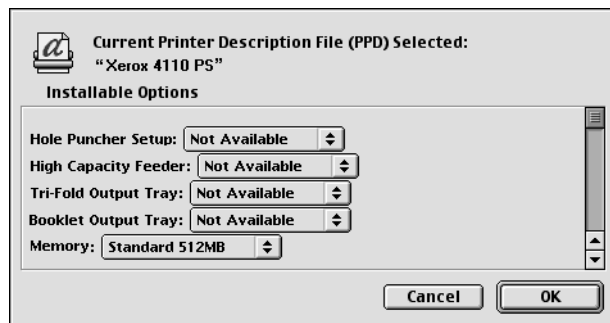
The Current Printer Description File (PPD) Selected dialog box appears.

2. Click [Configure].

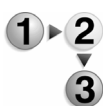


The Installable Options list appears.

3. Set the option menu items in Installable Options, and click [OK].

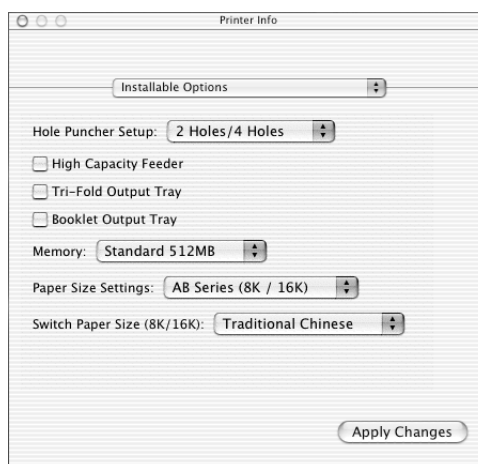


For Mac OS X



This section describes Installable Options for Mac OS X.

1. Click [Printers] on the Print Center menu bar, and select [Show Info].
For Mac OS X v10.3.3, click [Printers] on the Printer Setup Utility menu bar, then select [Show Info].
2. Select [Installable Options], and select the options that have been installed on the printer.



Settings

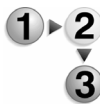
Hole Puncher Setup	Specify the number of holes to punch on the paper. Select from "2 Holes/4 Holes" or "3 Holes."
High Capacity Feeder	Select "Available" if the High Capacity Feeder has been installed.
Tri-Folding Output Tray	Select "Available" if the Tri-Fold Output Tray is installed.
Booklet Output Tray	Select "Available" if the Booklet Tray is installed.
Memory	The built-in memory is 512MB.
Paper Size Settings	Specify the paper size group for different locales to enable the selection of paper sizes common to that locale. The following groups of paper size categorized by locale are available: "AB Series," "AB Series (8K/16K)," "AB Series (8 x 13)," "AB Series (8 x 13"/8 x 14)," and "Inch Series." As the paper size settings will be set automatically in accordance with the relevant locale, it is usually not necessary to change this setting.

Switch Paper Size (8K/16K)

Indicate your language preference to enable the set of 8K and 16K paper sizes that is best suited to your needs. If you select "Traditional Chinese," the dimensions of the 8K and 16K paper sizes are 267 x 388mm and 194 x 267mm respectively. If you select "Simplified Chinese," the dimensions will be 270 x 390mm and 195 x 270mm respectively.

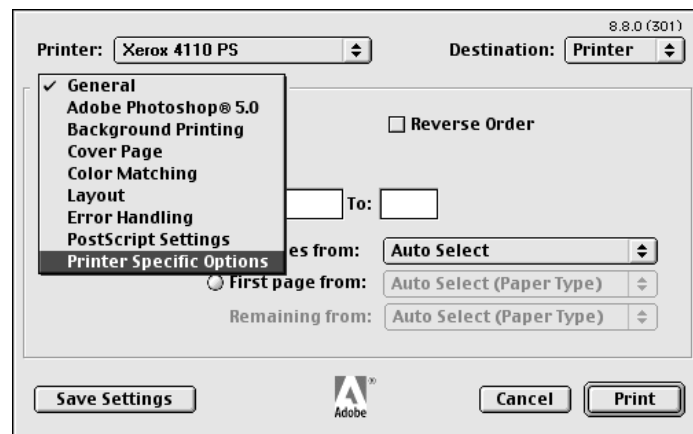


NOTE: If "AB Series (8K/16K)" is not selected in "Paper Size Settings," both sets of 8K and 16K paper sizes will not be available despite the setting specified here.

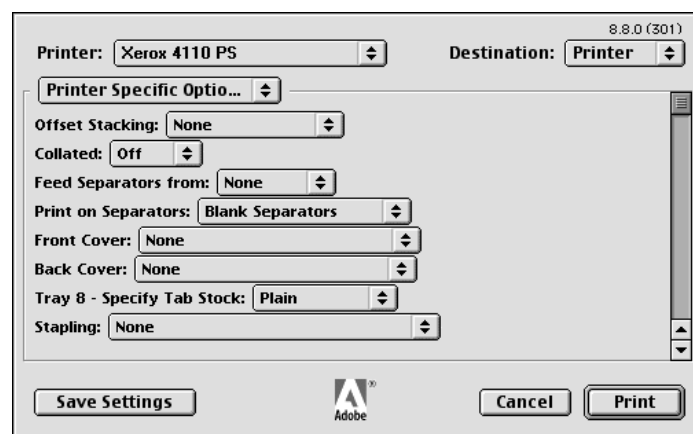
Printer features**For Mac OS 9.x and earlier**

This section describes how to set printer features for Macintosh OS 9.x and earlier.

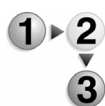
1. On the File menu of the application, click [Print].
The Print dialog box appears.
2. Select [Printer Specific Options].



3. Specify the functions that you want to set.



For Mac OS X

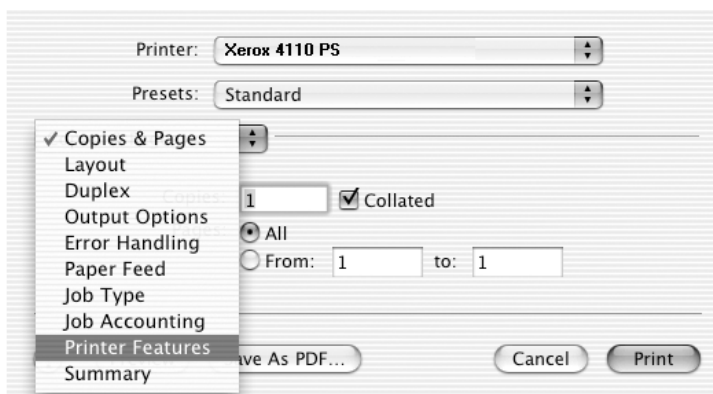


This section describes how to set printer features for Mac OS X.

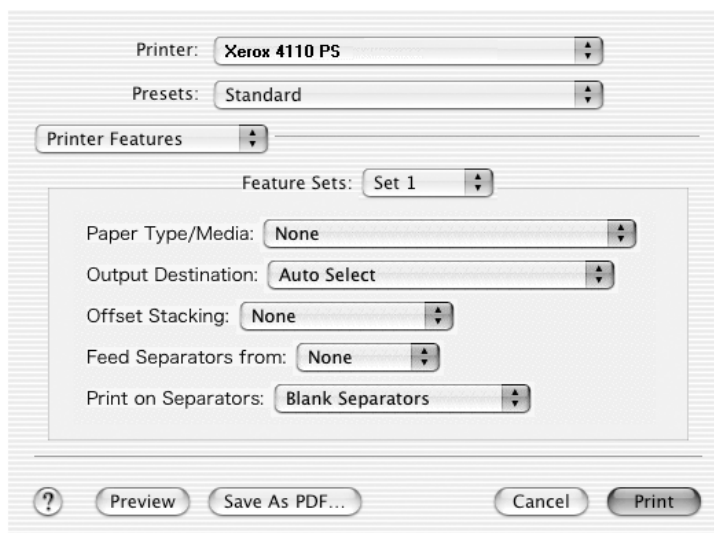
1. On the File menu of the current application, click [Print].

The Print dialog box appears.

2. Select [Printer Features].



3. Specify the functions that you want to set.



Settings

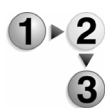
This section describes the settings in the Printer Specific Options list. The settings that can be selected vary depending on which options have been installed. Make these settings after specifying the installed options in Configure. See "Printer options" on page 5-11.

Offset Stacking	The position of individual jobs or sets of copies are shifted to either side of the output tray to enable easy separation.
Collated	Selects whether to collate a multiple-page file per set when they are printed.
Feed Separators from	Specifies the paper tray that transparency dividers are to be fed from. When [Auto] is selected, the tray set on the machine is used as the feed destination.
Print on Separators	Specifies whether or not to print on the transparency dividers as well as the transparency.
Front Cover	Specify whether to add front cover to the printouts. Select the paper tray for feeding the front cover sheets.
Back Cover	Specify whether to add back cover to the printouts. Select the paper tray for feeding the back cover sheets.
Tray 8 - Specify Tab Stock	Specifies whether tab stock is being loaded in tray 8. Select either "Plain" or "Tab Stock."
Stapling	Specifies whether or not to staple printed documents and the position of the staple. You can staple 2 to 50 sheets of 80 g/m ² or lighter paper.
Hole Punching	Select the punching position. The holes are made based on the output orientation of the paper. As a result, the holes may not be punched correctly depending on the position of the image.
Hole Punching	Specify the number of holes to punch. Select from "Use Printer Settings," "2 Holes," or "4 Holes." If "3 Holes" is selected for "Hole Puncher Setup," only "Use Printer Settings" will be available for selection.

Folding	Select the folding method.
Double Print	<p>Enable this feature to repeatedly print one page twice on a paper with a bigger size than the original. You can use Double Print feature if you have set the zoom ratio to 100% with the following paper size and output size settings.</p> <ul style="list-style-type: none">• Paper Size• A4• A5• B5• Folio (8.5 x 11")• Output Size• A3• A4• B4• Ledger (11 x 17")
Booklet Creation	Specify the assembling and finishing methods for booklet creation. You can check the result of the change in setting on the preview image at the top right of the screen.
Output Size for Booklet Creation	Specify the output size for booklet creation printing.
Booklet Subsets	Specify the number of sheets in each subset when printing booklet in subsets. Select from "None," or "Every Sheet" to "Every 20 Sheets."
Skip Blank Pages	Specify whether to skip blank pages when printing documents that consist of blank pages.
Bypass Feed Orientation	Specifies the paper orientation when printing from the bypass tray. When feeding the short edge of the paper first, select [Landscape]. When feeding the long edge of the paper, select [Portrait].
Paper Type/Media	Select the paper type to be used for printing.
Output Destination	Select the paper output destination.
Print Mode	Specifies whether to give priority to the print speed or the image quality.
Halftone	<p>Select the halftone settings for printing.</p> <ul style="list-style-type: none">• Select [Fine Dots] for the small size halftone dot commonly used in PostScript.• Select [Thick Dots] for coarser dots than the Fine Dots setting.• Select [Type 3] for the same halftone setting that is used in PCL.

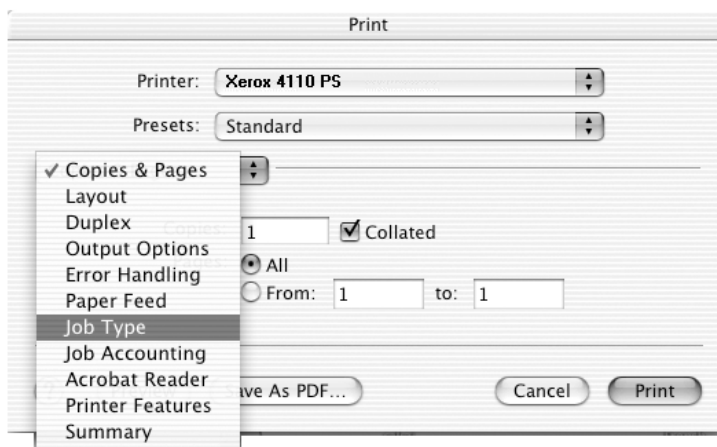
Image Enhancement	Specifies whether or not to use the Image Enhancement function. Selecting [On] smooths out boundaries when printing. This reduces jagged edges by artificially increasing the resolution of the image. When printing a bitmapped image composed of coarse halftone dots, smooth color or grayscale gradation is impossible in certain situations. In this case, select [Off].
Draft Mode	Specifies whether or not to reduce the amount of toner used when printing drafts. When [On] is selected, the overall printed page becomes lighter. This is best for printing documents when high print quality is not necessary.
Custom Paper Auto Orientation	Specifies whether or not to correct the orientation of the custom paper.
Substitute Tray	<p>Specifies what action to take when the paper for the print size is not loaded in the machine.</p> <ul style="list-style-type: none">• Use Printer Settings - Use the printer settings. The settings can be confirmed on the control panel.• Display Message - Display paper supply messages on the control panel. Printing is impossible until paper is supplied.• Use Nearest Size (Adjust to Fit) - Selects the nearest paper size and automatically adjusts the image size as necessary.• Use Nearest Size (No Zoom) - Selects the nearest paper size and prints the same size as the image.• Use Larger Size (Adjust to Fit) - Selects paper larger than the original and automatically adjusts the image size as necessary.• Use Larger Size (No Zoom) - Selects paper larger than the original and prints the same size as the image.• Feed from Bypass Tray - Feed from bypass tray.
Print Mixed Size Originals	Controls the orientation of the second-side image when printing double-sided.

Job Type (Mac OS X only)



This section describes the Job Type features available when printing.

1. On the File menu of the current application, click [Print].
The Print dialog box appears.
2. Select [Job Type].



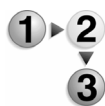
3. Specify the functions that you want to set.



Settings

Job Type	<p>You can specify the print function for Secure Print, Sample Print, and Delayed Print.</p> <ul style="list-style-type: none"> • Secure Print temporarily stores print jobs in the printer, and then prints them when print instructions are received from the control panel. • Sample Print outputs only one copy when multiple copies are specified. If there is no problem, the remaining sets can be printed. • Delayed Print temporarily stores print jobs in the printer, and then prints them at the scheduled time. <p>To use the Secure Print or Sample Print feature, input the User ID and password for Print Type. The password entered appears as bullets (●).</p> <ul style="list-style-type: none"> • Normal Print - Select when you do not want to output secure prints, sample prints, or delayed prints. • Secure Print - Select when you want to output secure prints. • Sample Print - Select when you want to output sample prints. • Delayed Print - Select when you want to output delayed prints. <p>See the Online Help for details on the operation of the printer.</p>
User ID	Enter the User ID for Secure Print or Sample Print.
Password	Enter the password for Secure Print. Each digit entered appears as a bullet (●).
Retrieve Document Name	Select the method for specifying the document name. If you have selected Auto Retrieve, the valid document name can be up to 24 alphanumeric characters.
Document Name	When "Enter Document Name" is selected in the Retrieve Document Name list, a document name up to 24 alphanumeric characters can be specified.
Start Print Time	Specifies the time when a Delayed Print job will be printed. Place the cursor in the hour or minute box and press the up or down triangle to specify the start time. You can also set the time by entering the time directly into the boxes. The default setting is 00:00.

Job Accounting (Mac OS X only)

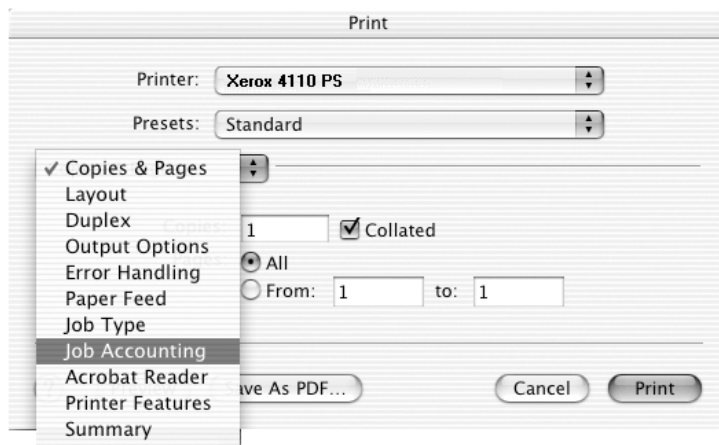


This section describes the Job Accounting features available when printing.

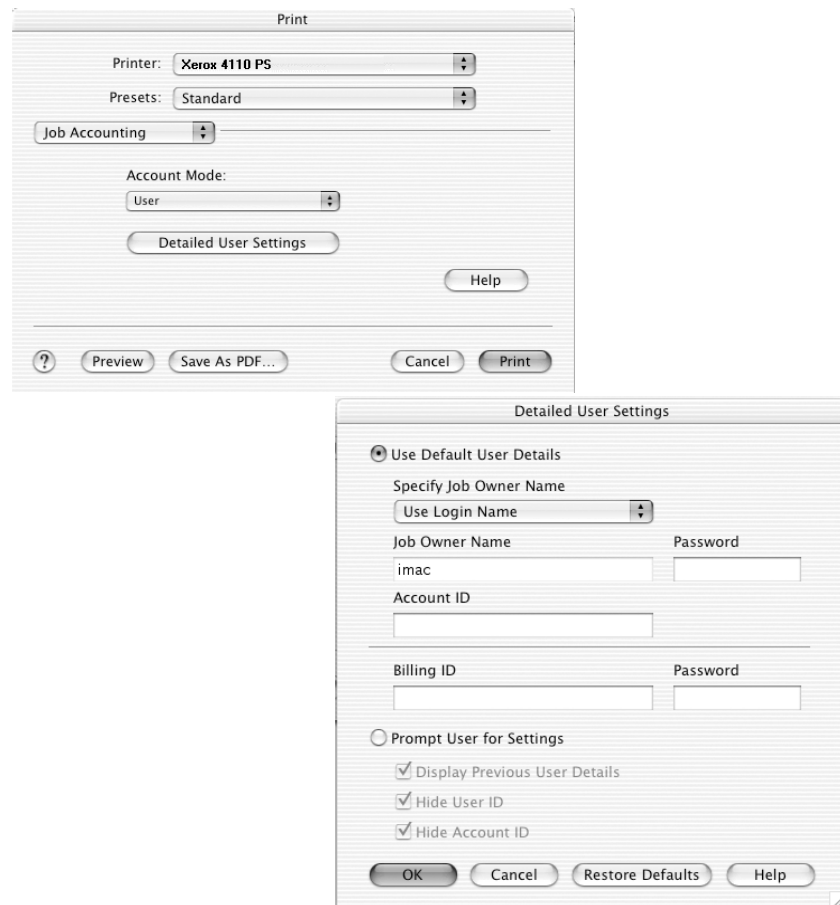
1. On the File menu of the current application, click [Print].

The Print dialog box appears.

2. Select [Job Accounting].



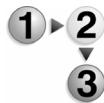
3. Specify the functions that you want to set.



Settings

- Account Mode** Specifies if all users or only System Administrators can change authentication related settings.
- Detailed User Settings** Opens the Detailed User Settings dialog box used to set the authentication information.
- Use Default User Details** - The values set in this feature are used as the authentication parameters.
- **Specify Job Owner Name** - Select how to specify User ID.
 - **Job Owner Name** - Enter a User ID.
 - **Password** - Enter a Password that matches the User ID. The password entered appears as bullets (●).
 - **Account ID** - Enter an Account ID.
 - **Billing ID** - Enter a User ID for Charge Print.
 - **Password** - Enter a Password that matches the Billing ID. The password entered appears as bullets (●).
 - **Prompt User for Settings** - Select this feature to display the [Enter User Details] dialog box each time you start printing. The user is then required to enter authentication information such as their User ID.
 - **Display Previous User Details** - Select the check box to store the user details entered in the [Enter User Details] dialog box, and display the details in the box as a default next time.
 - **Hide User ID** - Select the check box to specify whether a user ID is to be displayed or hidden when it is entered.
 - **Hide Account ID** - Select the check box to specify whether an account ID is to be displayed or hidden when it is entered.

Installing screen fonts



This section explains how to install the fonts in the Screen Font folder.



KEY POINT: It is recommended that all other applications are closed before installing the fonts. If applications are not closed, a warning message appears between Step 5 and Step 6.

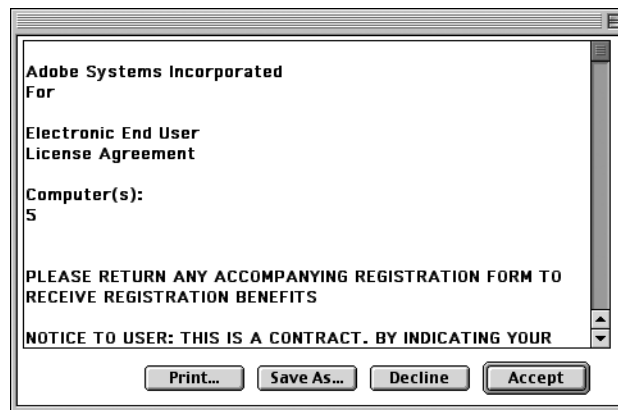
1. Start Macintosh and insert the PostScript Driver Library CD-ROM into the CD-ROM drive.
2. Double-click the [PS] icon followed by the Screen Font folder and then the [PS3 Fonts Installer]. The following window appears:



3. Click [Continue].

The license agreement dialog appears.

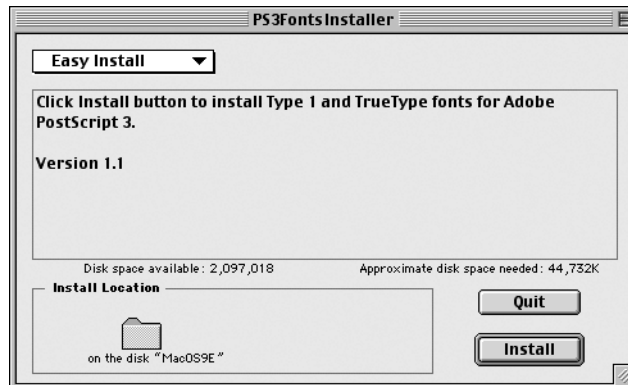
4. Read through the agreement carefully and if you have no objections to it, click [Accept].



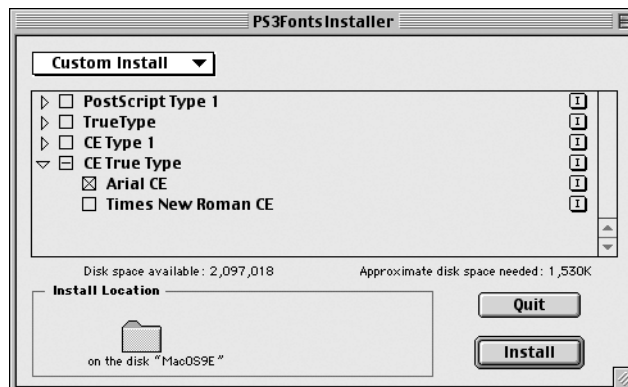
The PS3FontsInstaller dialog box appears.

5. You may select [Easy Install] or [Custom Install].

- **Easy Install** - installs all the fonts provided in the Screen Font folder.



- **Custom Install** - installs the selected fonts only. Click on the triangle arrow beside the four categories of fonts to display the fonts in each category and then check the fonts to be installed. For example, the diagram below shows that Arial CE of the CE TrueType fonts is selected.



A warning message will appear if you did not quit all other applications before performing the font installation.

6. Click [Install].

- The installation of the fonts begins.
- After the installation, you have to restart your Macintosh before the fonts can be used.
- Store your CD-ROM in a safe place.

6. Barcode Settings

This chapter contains information on:

- Barcode settings
- Character set tables on page 6-3
- Barcode sizes on page 6-13

About barcode settings

This section lists the types of compatible barcodes, designated character sets for barcode characters, and sizes of printed barcodes.



NOTE: *This guide assumes that the operator has a basic knowledge of barcodes.*

Font types and character sets

The table below lists compatible barcode types.

For the character set used to specify each barcode character, see “Character set tables” on page 6-3.

See “Barcode sizes” on page 6-13 for details about the size of printed barcode.

Barcode type	PostScript font name	Refer to the following table
JAN	HitachiI THINJANH8-RG	JAN Character Set Table (page 6-3)
Code 39	HitachiI T-C39H8	Code 39 Character Set Table (page 6-4)
NW7	HitachiI THINNW7H8-RG	NW7 Character Set Table (page 6-5)
Code 128	HitachiI THINC128H8-RG	Code 128 Character Set Table (page 6-6)
ITF (without bearer bar)	HitachiI THINITFH8-RG	ITF (Interleaved 2 of 5) Character Set Table (page 6-10)
ITF (with bearer bar)	HitachiI THINITFB-RG	
Customer Barcode	HitachiI THINPOSTBC-RG	Customer Barcode Character Set Table (page 6-12)

Font type	PostScript font name
OCR B LetterPress M	OCRBLetM



NOTE: The printed barcode's readability depends largely on factors such as the quality of paper used and performance of the barcode reader. Before using this product, we recommend you thoroughly test it under the conditions in which it will be used.

Sample program and output results

A program that prints a sample of each type of barcode and a PDF showing the output results is provided. Use these samples as a reference when printing barcodes.

- Location of sample program and output results in PDF
Located in the [manual] > [sample] folder on the PostScript Driver Library CD-ROM
- Sample program name
Sample.ps
- Output results PDF name
Sample.pdf

Character set tables

This section describes the character sets used when specifying barcode character for each barcode type.

JAN character set table

The table below lists the character sets used when printing JAN barcode characters.

Character	Character set					
	Left side odd parity		Left side even parity		Right side even parity	
	HEX notation	ASCII notation	HEX notation	ASCII notation	HEX notation	ASCII notation
0	30	0	41	A	4B	K
1	31	1	42	B	4C	L
2	32	2	43	C	4D	M
3	33	3	44	D	4E	N
4	34	4	45	E	4F	O
5	35	5	46	F	50	P
6	36	6	47	G	51	Q
7	37	7	48	H	52	R
8	38	8	49	I	53	S
9	39	9	4A	J	54	T
Left side guard bar	22	"				
Right side guard bar	23	#				
Center bar	21	!				

Code 39 character set table

The table below lists the character sets used when printing Code 39 barcode characters.

Character	Character set		Character	Character set		Character	Character set	
	HEX notation	ASCII notation		HEX notation	ASCII notation		HEX notation	ASCII notation
\$	24	\$	8	38	8	M	4D	M
%	25	%	9	39	9	N	4E	N
*	2A	*	(SP)	20	SP	O	4F	O
+	2B	+	A	41	A	P	50	P
-	2D	-	B	42	B	Q	51	Q
.	2E	.	C	43	C	R	52	R
/	2F	/	D	44	D	S	53	S
0	30	0	E	45	E	T	54	T
1	31	1	F	46	F	U	55	U
2	32	2	G	47	G	V	56	V
3	33	3	H	48	H	W	57	W
4	34	4	I	49	I	X	58	X
5	35	5	J	4A	J	Y	59	Y
6	36	6	K	4B	K	Z	5A	Z
7	37	7	L	4C	L	(SP)	40	@

NW7 character set table

The table below lists the character sets used when printing NW7 barcode characters.

Character	Character set		Character	Character set		Character	Character set	
	HEX notation	ASCII notation		HEX notation	ASCII notation		HEX notation	ASCII notation
\$	24	\$	0	30	0	A	41	A
+	2B	+	1	31	1	B	42	B
-	2D	-	2	32	2	C	43	C
.	2E	.	3	33	3	D	44	D
/	2F	/	4	34	4	A	61	a
			5	35	5	B	62	b
			6	36	6	C	63	c
			7	37	7	D	64	d
			8	38	8			
			9	39	9			
			:	3A	:			

Code 128 character set table

The table below lists the character sets used when printing Code 128 barcode characters.

Value	Character			Character set	
	CODE A	CODE B	CODE C	HEX notation	ASCII notation
0	SP	SP	00	20	SP
1	!	!	01	21	!
2	"	"	02	22	"
3	#	#	03	23	#
4	\$	\$	04	24	\$
5	%	%	05	25	%
6	&	&	06	26	&
7	'	'	07	27	'
8	((08	28	(
9))	09	29)
10	*	*	10	2A	*
11	+	+	11	2B	+
12	,	,	12	2C	,
13	-	-	13	2D	-
14	.	.	14	2E	.
15	/	/	15	2F	/
16	0	0	16	30	0
17	1	1	17	31	1
18	2	2	18	32	2
19	3	3	19	33	3
20	4	4	20	34	4
21	5	5	21	35	5
22	6	6	22	36	6
23	7	7	23	37	7
24	8	8	24	38	8
25	9	9	25	39	9
26	:	:	26	3A	:
27	;	;	27	3B	;
28	<	<	28	3C	<

Value	Character			Character set	
	CODE A	CODE B	CODE C	HEX notation	ASCII notation
29	=	=	29	3D	=
30	>	>	30	3E	>
31	?	?	31	3F	?
32	@	@	32	40	@
33	A	A	33	41	A
34	B	B	34	42	B
35	C	C	35	43	C
36	D	D	36	44	D
37	E	E	37	45	E
38	F	F	38	46	F
39	G	G	39	47	G
40	H	H	40	48	H
41	I	I	41	49	I
42	J	J	42	4A	J
43	K	K	43	4B	K
44	L	L	44	4C	L
45	M	M	45	4D	M
46	N	N	46	4E	N
47	O	O	47	4F	O
48	P	P	48	50	P
49	Q	Q	49	51	Q
50	R	R	50	52	R
51	S	S	51	53	S
52	T	T	52	54	T
53	U	U	53	55	U
54	V	V	54	56	V
55	W	W	55	57	W
56	X	X	56	58	X
57	Y	Y	57	59	Y
58	Z	Z	58	5A	Z
59	[[59	5B	[
60	\	\	60	5C	\
61]]	61	5D]

Value	Character			Character set	
	CODE A	CODE B	CODE C	HEX notation	ASCII notation
62	^	^	62	5E	^
63	_	_	63	5F	_
64	NUL	`	64	60	`
65	SOH	a	65	61	a
66	STX	b	66	62	b
67	ETX	c	67	63	c
68	EOT	d	68	64	d
69	ENQ	e	69	65	e
70	ACK	f	70	66	f
71	BEL	g	71	67	g
72	BS	h	72	68	h
73	HT	l	73	69	l
74	LF	j	74	6A	j
75	VT	k	75	6B	k
76	FF	l	76	6C	l
77	CR	m	77	6D	m
78	SO	n	78	6E	n
79	SI	o	79	6F	o
80	DLE	p	80	70	p
81	DC1	q	81	71	q
82	DC2	r	82	72	r
83	DC3	s	83	73	s
84	DC4	t	84	74	t
85	NAK	u	85	75	u
86	SYN	v	86	76	v
87	ETB	w	87	77	w
88	CAN	x	88	78	x
89	EM	y	89	79	y
90	SUB	z	90	7A	z
91	ESC	{	91	7B	{
92	FS		92	7C	
93	GS	}	93	7D	}
94	RS	~	94	7E	~

Value	Character			Character set	
	CODE A	CODE B	CODE C	HEX notation	ASCII notation
95	US	DEL	95	7F	DEL
96	FNC 3	FNC 3	96	A1	
97	FNC 2	FNC 2	97	A2	
98	SHIFT	SHIFT	98	A3	
99	CODE C	CODE C	99	A4	
100	CODE B	FNC 4	CODE B	A5	
101	FNC 4	CODE A	CODE A	A6	
102	FNC 1	FNC 1	FNC 1	A7	
103	START(CODE A)			A8	
104	START(CODE B)			A9	
105	START(CODE C)			AA	
106	STOP			AB	

ITF (Interleaved 2 of 5) character set table

The table below lists the character sets used when printing ITF barcode characters.

Character	Character set		Character	Character set		Character	Character set	
	HEX notation	ASCII notation		HEX notation	ASCII notation		HEX notation	ASCII notation
00	21	!	30	3F	?	60	5D]
01	22	"	31	40	@	61	5E	^
02	23	#	32	41	A	62	5F	_
03	24	\$	33	42	B	63	60	`
04	25	%	34	43	C	64	61	a
05	26	&	35	44	D	65	62	b
06	27	'	36	45	E	66	63	c
07	28	(37	46	F	67	64	d
08	29)	38	47	G	68	65	E
09	2A	*	39	48	H	69	66	F
10	2B	+	40	49	I	70	67	G
11	2C	,	41	4A	J	71	68	H
12	2D	-	42	4B	K	72	69	I
13	2E	.	43	4C	L	73	6A	J
14	2F	/	44	4D	M	74	6B	K
15	30	0	45	4E	N	75	6C	L
16	31	1	46	4F	O	76	6D	M
17	32	2	47	50	P	77	6E	N
18	33	3	48	51	Q	78	6F	O
19	34	4	49	52	R	79	70	P
20	35	5	50	53	S	80	71	Q
21	36	6	51	54	T	81	72	R
22	37	7	52	55	U	82	73	S
23	38	8	53	56	V	83	74	T
24	39	9	54	57	W	84	75	U
25	3A	:	55	58	X	85	76	V
26	3B	;	56	59	Y	86	77	W
27	3C	<	57	5A	Z	87	78	X
28	3D	=	58	5B	[88	79	Y

Character	Character set		Character	Character set		Character	Character set	
	HEX notation	ASCII notation		HEX notation	ASCII notation		HEX notation	ASCII notation
29	3E	>	59	5C	\	89	7A	Z
90	7B	{	94	A1	DEL	98	A5	
91	7C		95	A2		99	A6	
92	7D	}	96	A3		START	A7	
93	7E	~	97	A4		STOP	A8	

With ITF, one character set specifies the pair of a character denoted by a bar and a character denoted by a space.

However, the START and the STOP character are specified by one character set.

Example:

To print the pair of characters of the bar representing “3” and the space representing “7”, specify “46” (HEX notation).

To print the pair of characters of the bar representing “7” and the space representing “3”, specify “6A” (HEX notation).

Customer barcode character set table

The table below lists the character sets used when printing customer barcode characters.

Character	Character set		Character	Character set	
	HEX notation	ASCII notation		HEX notation	ASCII notation
START	3C	<	CC1	61	a
STOP	3E	>	CC2	62	b
-	2D	-	CC3	63	c
0	30	0	CC4	64	d
1	31	1	CC5	65	e
2	32	2	CC6	65	f
3	33	3	CC7	67	g
4	34	4	CC8	68	h
5	35	5			
6	36	6			
7	37	7			
8	38	8			
9	39	9			

Barcode sizes

The table below lists formulae for calculating the approximate dimensions of printed barcodes.

The dimensions of the barcode printed may vary, even when using the same program, depending on conditions such as the characteristics and resolution of the printer used, paper quality, and so forth. The dimensions derived from the formulae in this table are not guaranteed to be the actual dimensions of the printed barcodes. Use this table as a reference when estimating the size of printed barcodes.

Barcodes type	Formulae	
	Width	Height
JAN (standard)	$P \times 0.502$	$P \times 0.352$
	Side margins not included.	Indicates the height of the guard bar.
JAN (short version)	$P \times 0.354$	$P \times 0.352$
	Side margins not included.	Indicates the height of the guard bar.
Code 39	$P \times (C + 2) \times 0.106$	$P \times 0.352$
	Inter character gap of the left and right sides not included. "C" includes the checkdigit.	
NW7	$P \times (C1 \times 0.132 + C2 \times 0.148 - 0.026)$	$P \times 0.352$
	Inter character gap of the left and right sides not included. "C1" and "C2" include the checkdigit.	
Code 128	$P \times (C \times 0.081 + 0.096)$	$P \times 0.352$
	Formula for CODE C.	
ITF (without bearer bar)	$P \times ((C/2 \times 0.175) + 0.093)$	$P \times 0.352$
	Quiet zone not included. "C" includes the checkdigit.	
ITF (with bearer bar)	$P \times ((C/2 \times 0.137) + 0.323)$	$P \times 0.352$
	Bearer bar and quiet zone included. "C" includes the checkdigit.	Bearer bar included.
Customer Barcode	$P \times 7.297$	$P \times 0.342$
	Spaces before the black bar of START code and after the black bar of the STOP code are not included.	Indicates the height of the long bar.

P: Font size (point)

C: Number of characters

C1: Number of characters (0,1,2,3,4,5,6,7,8,9,-,\$)

C2: Number of characters (:/,.,+,A,B,C,D)

A. Appendix

Cautions and limitations

About the driver

Cautions and limitations relating to each type of driver are listed in the Readme.txt file in the PostScript Driver Library CD-ROM. Ensure you read it before installing the driver.

Troubleshooting

See the User Guide for error codes and error messages displayed on the control panel and how to deal with paper jams.

Print operation

The printer driver allows you to make selections to print on custom paper and postcards using duplex and/or the stapling feature to the Finisher Tray. However, if you are printing on custom paper or postcards, these features will not function even though you may still be able to select them.

You can feed custom paper from the bypass tray only. However, when you select custom paper, the Paper Source selection does not change to Manual Feed automatically. Please select Manual Feed yourself.

Index

A

Adobe Acrobat Reader5-2
Adobe Type Manager2-1, 3-1, 5-2
AdobePS Printer Driver (ver. 8.5.1,
8.7.0, and 8.8)5-1
Advanced Options Dialog Box . 3-13, 4-
15

B

Barcode Settings6-1
Barcode Sizes6-13

C

Code 128 Character Set Table6-6
Code 39 Character Set Table6-4
Configuration Tab2-8, 3-11, 4-13
Customer Barcode Character Set Table
6-12

E

error codesA-1
error messagesA-1

J

JAN Character Set Table6-3
Job Accounting (Mac OS X only) .5-20
Job Type (Mac OS X only)5-18

N

NW7 Character Set Table6-5

O

Options Tab2-8
Output Settings Tab2-8

P

PPD2-1, 3-1, 4-1, 5-1

R

Readme.txt2-1, 3-1, 4-1, 5-2

S

Screen Fonts5-1

W

Windows 20004-1
Windows 952-2
Windows 982-2
Windows Me2-2
Windows NT 4.03-1
Windows Server 20034-1
Windows XP4-1

