

PARIS RELEASE NOTES VERSION 5.0

Paris Version 5.0 is the latest generation of the popular Paris Enterprise document production system used by thousands of companies in over 55 countries producing billions of paper and electronic pages each year.

March 2017



© 2017. All rights reserved.

This work is copyright. This document may not be reproduced by any means, mechanical, electronic or otherwise, without the prior agreement and written consent of XLPrint Pty. Ltd. or an appointed representative.

This document may contain or refer to information and products protected by copyright or patents and does not convey any license under the patent rights of XLPrint Pty. Limited nor the rights of others. All product names used in this manual are trademarks of their respective owners.

The information in this document is provided for reference only. Names and data used in examples are fictitious and are provided for explanatory purposes only.



www.xlprint.com

INDEX

Index	3
Paris Version 5.0 Overview	4
Licensing Changes	4
Printing to Disk	4
Major Enhancements:	5
New Office 2017 style User Interface	5
EDO Batch Processing	7
Output Job Separation Events	7
PDF Accessibility Compliance	7
PDF Import Enhancement	7
EDO Email now supports output via SendGrid	8
Complex XML option for EDI data interchange	8
Direct LPR Printing	9
Direct HTTP IPP Printing	10
New NEXTFILE Naming Options	10
Info View reflects state of fields:	11
PCL and PostScript Driver Enhancements:	11
General Fixes and Changes	12
Further Information	15

PARIS VERSION 5.0 OVERVIEW

Paris Version 5.0 is the latest generation of the popular Paris Enterprise document production system used by thousands of companies in over 55 countries producing billions of paper and electronic pages each year.

Paris Version 5.0 is a major upgrade and supersedes Paris Version 4.3 with little or no changes required to existing Paris V3 and V4 applications and resources.

This document outlines the various changes and improvements to the Paris product between Paris Version 4.3 and Paris Version 5.0.

Users upgrading from Paris Version 3 should view this document in conjunction with the Paris Version 4.1, 4.2 and 4.3 Release Notes.

Licensing Changes

The End User License Agreement (EULA) terms remain the same however the license enforcement in the software has changed.

The Designer still requires Authorization to extend its use beyond the initial 30-day trial however Paris Version 5 now enables all optional features in the Designer, for example Interactive PDF Objects, Secure Objects and XML Export. These feature's licenses are now managed at the Spooler.

The Spooler now manages all feature licenses (with the exception of the Designer). Jobs using Environments with licensable features (for example Interactive PDF or NEXTFILE) will abort in the Spooler if the necessary feature has not been Authorized.

Printing to Disk

Device-based End User License Agreements require a license for each device or destination including printing to disk via the NEXTFILE feature (see the Device License EULA extract below).

Printing to disk via the NEXTFILE function now also requires license Authorization. As with all other licensed features, NEXTFILE is available under trial for 30 days after which jobs directed to a NEXTFILE printer will abort if the feature is not licensed and Authorized.

EULA Extract:

Section 2. INITIAL AND ANNUAL LICENSE FEES

The initial license fee ('Initial License Fee') is payable by you upon grant of this License and is valid for a 12 month period from the date of order. At the end of the initial 12 month period and annually thereafter an annual license fee ("Annual License Fee") is payable to continue using the product. All license fees are payable annually in advance. XLPRINT is entitled to increase the Annual License Fees by no greater than 5% each year.

The Initial License Fee and Annual License Fee entitle you to use the software for output to the licensed number of:

- (a) direct or indirect printers or multi-function devices*
- (b) local or network file systems*

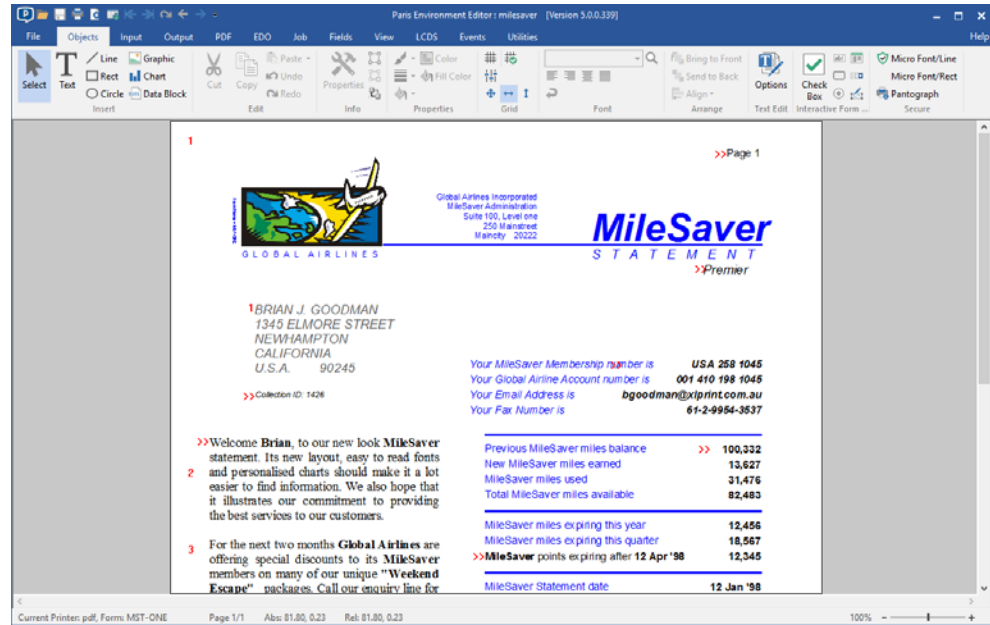
You must pay to XLPRINT additional license fees if you wish to use the Software for additional output or output to devices of greater speed.

The Annual License Fee entitles you to all updates and upgrades relating to the purchased components.

MAJOR ENHANCEMENTS:

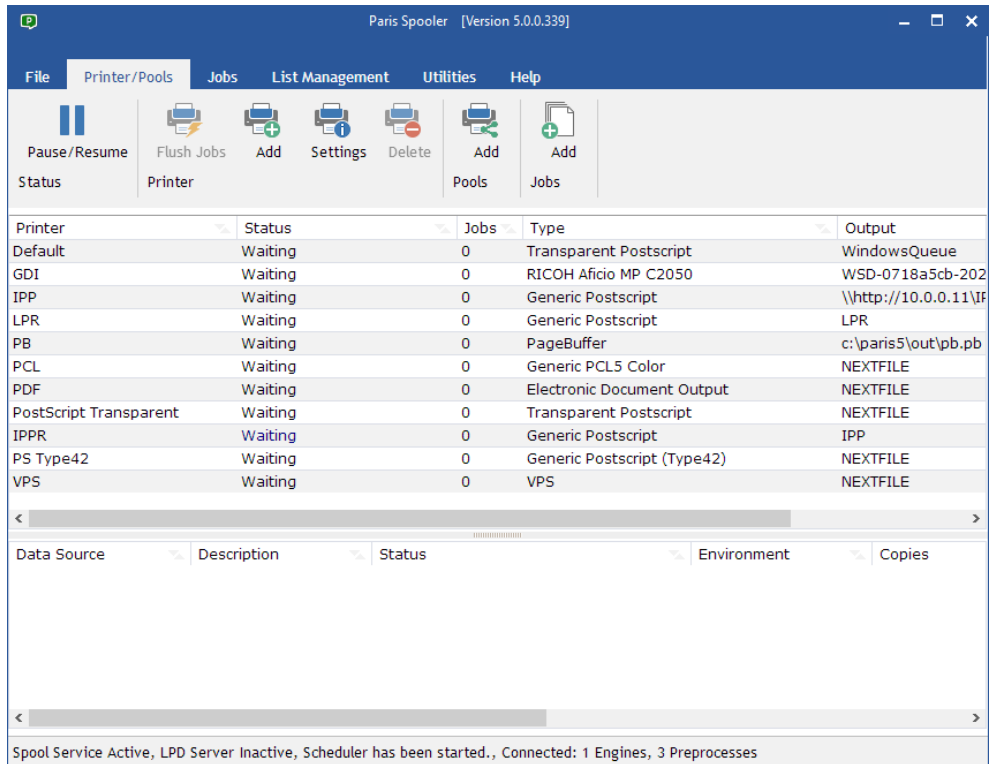
New Office 2017 style User Interface

The new Paris Version 5.0 Designer follows the new Microsoft Office 2017 User Interface standards. It uses a fresh set of icons and the Office 2017 "Flat" style however general functionality is identical to Paris Version 4 Designer and very familiar to existing users.

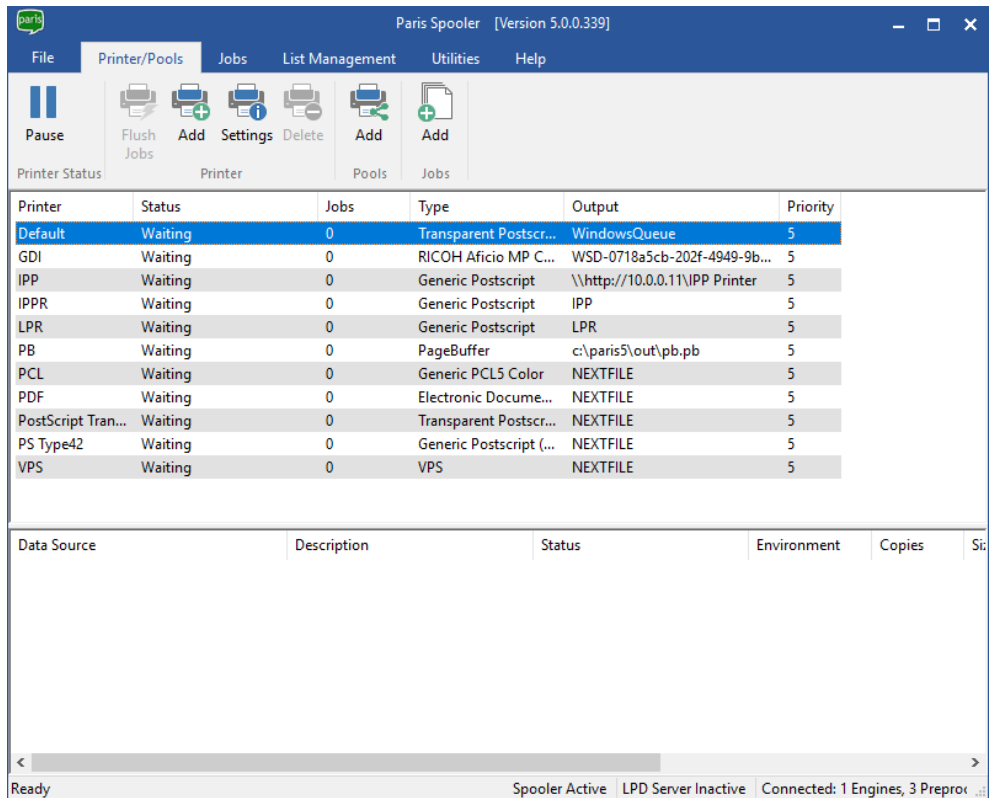


The new Paris Version 5.0 Spooler in Application and Service Mode follows the new Microsoft Office 2017 User Interface standards. In addition, both User Interface modes now "remember" column and panel dimensions and positions as well as sort sequences.

Overall, particularly with the Service Mode User Interface, performance is significantly faster and smoother.



(Service Mode)



(Application Mode)

EDO Batch Processing

Some SMTP email server providers will limit the rate at which you can submit emails. In this case, use the EDO Batch option to specify a Time Span and Number of Files to restrict the flow of outgoing EDO documents.

By default this option is disabled.

This applies to all EDO methods including Email, Fax and Archive.

To enable this option, add the following to the EDOBatch.INI file located in the Paris5 root folder:

```
[Batch]
TimeSpan=60
MaxFiles=99
```

Where TimeSpan is specified in seconds

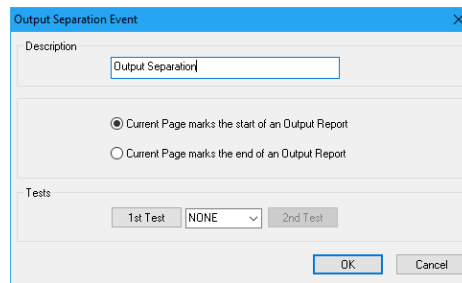
Where MaxFiles is expressed as number of EDO Tickets.

In this example, the Paris EDO Service will restrict its Ticket processing to 99 Tickets every 60 seconds.

Output Job Separation Events

The new Designer's "Job" tab now includes a new Job Separation option which, unlike the existing Job Separation event, is based on the content of a field at the end of each page (ie "Output").

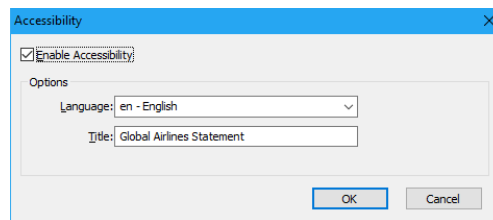
The new feature is intended to make document splitting simpler for electronic output.



PDF Accessibility Compliance

New functionality has been added to the Paris PDF output driver to support recent changes in legislation around the world regarding accessibility of PDF documents for sight-impaired customers.

A new option is now available on the Designer's "PDF" tab that allows you to enable and set the accessibility properties of PDF files produced by the current Environment when outputting through the native Paris PDF driver.



By enabling this option, PDF produced by the native Paris PDF driver will conform to the agreed standards of PDF Accessibility making it suitable for the "Read Aloud" option found in most PDF viewers.

- Please note: Output to disk requires a Paris License.

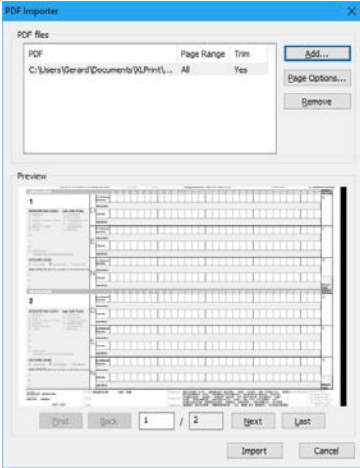
PDF Import Enhancement

The Paris PDF Import Wizard has been completely overhauled to improve performance and functionality.

The PDF Import Utility found in previous versions of Paris used to import pages from a selected PDF file as full-page graphics. While this ensured fidelity and accuracy, it becomes inefficient, especially on smaller printers due to the size of the graphic and the need for the printer's controller to re-rasterize the image each time it is used.

The new PDF Import Wizard now imports and stores each PDF page object as native Paris objects. These new objects are therefore far more efficient and are supported by all Paris output drivers.

As with the previous PDF Import Wizard, pages of the selected PDF are created as Paris Forms and are available for use in Paris in any of the Form selection methods. The PDF page objects will appear as a new object type on the Form and may be moved and resized.

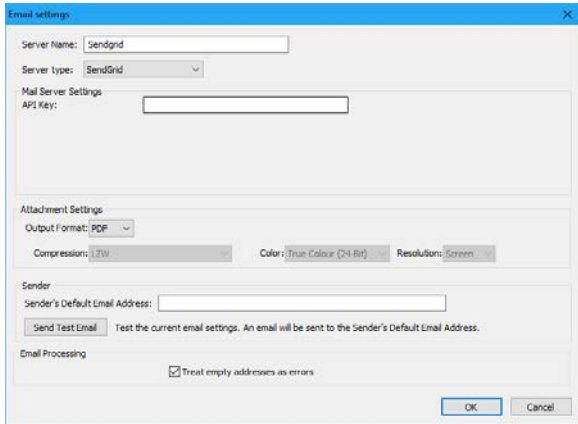


EDO Email now supports output via SendGrid

The Paris Electronic Document Output (EDO) module now supports emailing through the very popular SendGrid emailing service in addition to the existing SMTP option.

The new SendGrid option means that you will no longer have to implement and maintain your own SMTP servers.

For more on SendGrid, visit their web site: sendgrid.com



Complex XML option for EDI data interchange

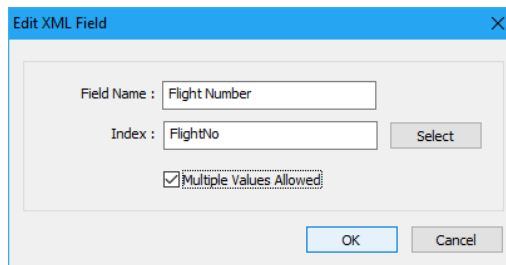
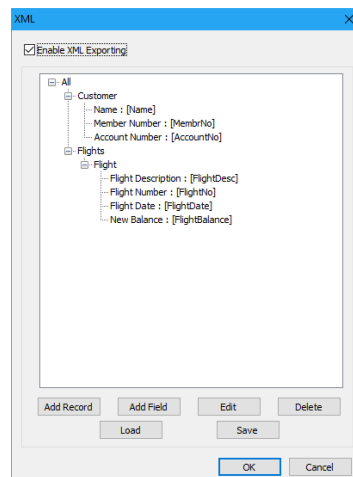
The existing "Indexing" facility found on the Designer's "Output" tab has always allowed you (when enabled and licensed) to output index or meta data files when outputting to a NEXTFILE printer definition. This feature is limited to "flat" CSV and XML

index structures and is not suitable for iterating type data, such as line items in a statement, that is often required for EDO data interchange.

Paris Version 5 sees the introduction of a new XML/EDI index feature that allows you to define complex and iterative XML index structures to support more complex EDI interchange processes.

Like the existing Indexing feature, the XML feature appears on the Designer's "Output" tab and when enabled and configured, is expressed through the NEXTFILE output process.

The XML dialog allows you to define, save and load XML schemas. When selecting the "Multiple values allowed" option for a node, Paris will iterate through each Fill Field event. This is ideal for collecting and storing recurring line-item data where the Data Block contains an "Update Field" event set across a range of lines and updated for each of those lines.



Direct LPR Printing

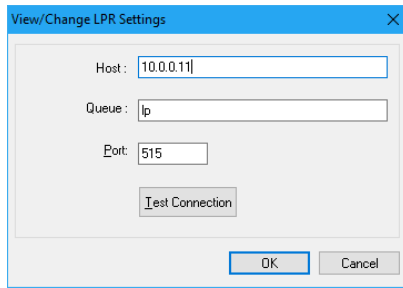
The Line Printer Remote (LPR) and Line Printer Daemon (LPD) protocols were developed as a way of printing across TCP networks to remote printers. The protocol allows the LPR "Host" (Paris Spooler) to connect to and pass print jobs to a LPD "Client" (printer). The receiving printer must therefore be running an LPD server in order to respond to the Paris Spooler Host LPR.

To configure an LPR printer in the Paris Spooler, enter the keyword "LPR" in the Paris printer definition's "Output To" area (note: must be all upper-case).

When "LPR" is specified, click on the "Settings" button to set the LPR properties including:

- Host name in the form an IP address
- Target Queue Name on the printer. Some printers will respond to any Queue Name. In most cases the Queue Name is case-sensitive.
- Port. Usually 515

A "Test Connection" button will allow you to confirm the connection.



Direct HTTP IPP Printing

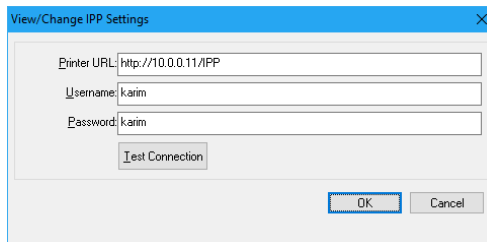
The Internet Printing Protocol (IPP) was developed as a way of printing from the internet using the HTTP, HTTPS and IPP protocols. The protocols allow the "Host" (Paris Spooler) to connect to, and pass, print jobs to a "Client" (printer).

To configure an IPP printer in the Paris Spooler, enter the keyword "IPP" in the Paris printer definition's "Output To" area (note: must be all upper-case).

When "IPP" is specified, click on the "Settings" button to set the IPP properties including:

- Printer URL for example `ipp://printer-url` or `https://printer-url`
- Username
- Password

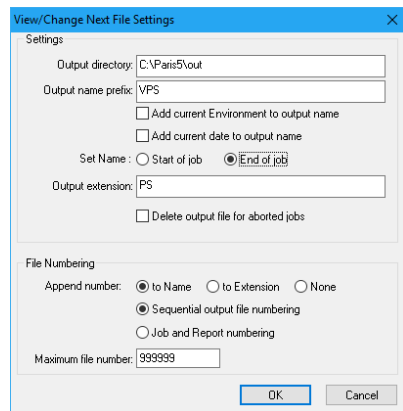
A "Test Connection" button will allow you to confirm the connection.



New NEXTFILE Naming Options

The NEXTFILE output feature allows users to output files to disk. It is a licensed feature.

When defining the NEXTFILE output properties you now see an option to set the output file name at the Start of Job or the End of Job. The new "End of Job" option is particularly useful if the file names are generated from Fields as it allows the name to be generated from the content of the field as it is at the end of the job.



Info View reflects state of fields:

The Info View's "Fields" tab now displays the state and content of each field as it is for the currently selected page object. The value of a Field can change during the composition sequence of a page. The Info View will now display the exact value of each field as it is when the currently selected object is being composed. In this way, you can track the state of a field during page composition.

PCL and PostScript Driver Enhancements:

The Paris PCL and PostScript drivers have been enhanced:

The PCL driver is now in-line with the PostScript driver. It now supports color as well as graphic rotation and scaling. The new Scaling XPD option is *XPDsimulateScaledGraphics and defaults to "True".

The PostScript driver now supports graphic transparency through the new *XPDPSColorImageTransparency: True XPD option. A default PostScript Transparency XPD file (driver) is now included with the installer and will be added to the list of available XPD printer types.

GENERAL FIXES AND CHANGES

- Add message to printer log when a job is sent to it because of an invalid "PRINTER=" DJDE. This will help identify print files with invalid "Printer=" Runtime Events.
- Scheduler Merge meter now tracks totals and can calculate duplicate and filtered documents.
- Improved Scheduler Merge meter percentage display.
- Logging utility now uses printer display name and not file name.
- "About" dialog copyright details updated.
- Accounting utility dialog updates.
- Added warning mechanism for Accounting file size. Defaults to 100mb and can be set between 0 and 4,000 mb. 0 MB disables warning function. Email sent (if Notification configured) and pop-up displayed in App Mode.
- Fixed issue with Resource Manager not finding some WASP fonts.
- Fixed issue in Resource Manager that was changing working directory and causing "missing file" errors in Designer
- Fixed issue that caused Scheduler's "Trigger" option to fail.
- PCL output is now cropped to page for PDF import objects.
- Correctly apply foreground color to simple charts.
- PELayerUtil files now included in install.
- Moved all temp file processing from Windows temp folder into main root folder structure to avoid possible access issues.
- Fixed memory access issue caused by Resource Manager.
- Fixed issues with hover-over tooltips in Spooler.
- Enhanced printer status polling for direct printing (LPR/IPP).
- IPP output responds to hold and delete messages.
- IPP printer status messages now expanded into meaningful descriptions.
- Simplified font cache code. Each engine maintains it's own cache. Fonts with UID (hp5 and type3) no longer cached.
- Add Font dialog now sorts font names.
- Application mode Spooler now properly enabling/disabling pre-processors for editing.
- Changed installer's DLL registration order to correct F6ScriptLib issue.
- TLS SMTP Port now correctly displays in Email Server list (587)
- Test email now contains server settings in the email body.
- Fixed an issue with some characters in the Tool-tip display.
- Fixed issue with Resource Manager unpack item select.
- Fixed issue with PostScript Form download size issue.
- Fixed memory leak in Designer when editing Text objects containing fields.
- Extend LPRData Field Calculation options.
- Added PrtName field calculation to use to display printer name in output.
- Imported PDF optimization where we convert any font types that are not Type1/Type3/Type42 (for example Type1C - compressed) into Type3 bitmap.
- Added bitmap (Type 3) font support to PDF Import.
- Implemented new unified Help system, shared by Designer and Spooler.
- Info View shows if a PageDef is Internal or External.
- Fix for underlining when Output Events overlap.
- New licensing management.
- Fix issue with frame size for XForm objects in PDF Import.
- Fixed scaled and cropped PDF Import issues in PostScript driver
- Apply trim/bleed support in PDF Import. Option to trim to PDF document's "Trim Box". Invalid Trim Boxes are ignored.
- PCL images will be cropped when off-page.
- Now correctly handle PostScript download of PDF Import images.

- Added support for CCITT images in PDF Import.
- Improved page size and landscape support for PDF Import.
- Added ConfigRead and ConfigWrite to F6 Script Object.
- Added "Lookup" method to F6.FileSystem script object to access LUT tables in ENV folder as per Field Calculation method.
- When selecting "OMR Bars" option in Scheduler's "Print" action we now disable the "Width" and "Height" edit fields. Selecting "Barcode" enables these buttons.
- Test dialog controls now enabled/disabled based on context of test.
- View PCC bytes as literal is now the default (not decimal).
- PCL driver now correctly supports graphic scale/rotate.
- Fix for problem changing properties of multiple selected items that are attached to different data blocks.
- Fix for FINDWORD and FINDWORDEND Field Calculation parameters.
- XPDsimulateScaledGraphics is now set to "True" by default. This enables scaling for PCL graphics by default. To disable (and return to previous behavior) add to XPD and set to False.
- Fix for handling of PCL white objects.
- Field Calculation "AMT" removed from documentation.
- Added the "VAL" Runtime command to the Runtime Modification feature.
- Fixed Application Mode UI for PageBuffer Sort Action naming.
- Redesigned Indexing UI in the Designer.
- Fixed issue with justifying of text with multiple inserted events separated by a space character.
- Made printer sorting case-insensitive in the Spooler.
- Added "Page Back" navigation button in Designer.
- Added GetDriveName, GetSpecialFolder to the F6 Script object.
- Added metadata Page Count and Document Count for sorting and filtering in Scheduler Actions.
- Added multi-field sort to Scheduler Sort action.
- Added GetSysRootPath, GetTempName, GetParentFolderName, GetFileName, GetExtensionName, GetBaseName to F6 Script Object.
- Added Delete_File and Move_File to F6 Script Object.
- Fixed issue with icons.
- Added white-bit transparency XPD option for color Postscript graphics. Off by default. Applies to Level 3 PS only.
`LanguageLevel: 3`
`XDPDPSColorImageTransparency: True/False`
- Application mode Spooler Job Status message now scroll-able.
- Implemented improved hover-over Tooltip system for Web Spooler.
- Printer names now appearing correctly in Logs.
- Fixed issue with Event test string deletion caused by new "Edit" button.
- Designer now re-loads script files if/when they have been edited while loaded.
- White-fill boxes in PCL output no longer treated as transparent.
- Fixed function insert dialog in field calculation dialog so that columns are in the right order.
- Spooler Service Restart option in Service Mode Spooler UI.
- Improvements to the View/Change Test dialog.
- Added extra error-trapping for invalid license files.
- Log files now reside in LOG folder.
- Column widths for Web Spooler are now stored as cookies. They will expire after 6 months if the Web Spooler is not opened.
- New "Printing" message displayed in Designer while printing to notify user that the Designer is temporarily busy.
- Added "Tooltip" display of job's error when hovered over.
- New options to ignore "off-page" behavior in Designer.
- Added warning in Service Mode Spooler when no files selected for un-packing in Resource Manager.

- Spooler Job display now shows submit date/time, not creation date/time.
- Fixed issue with saving new entries to Spell Check dictionary.
- Designer's Field Calculation Help list is now sorted.
- Added ability to sort columns in Web Spooler interface.
- Display EDO log in Spooler if on same machine.
- View End User License Agreement (EULA) from License dialog.
- Introduced Online/Offline Printer Status.
- Introduced printer status monitoring for disk, LPR, GDI and IPP.
- Added support for caching of scaled PCL images when new scaling XPD option is true.
- Fixed issue in Spooler when deleting Pre-Processor definitions.
- Fixed Designer issue with cursor orientation in rotated text.
- Reinstated autoscroll in Designer.
- Fixed sequence editor print and merge actions so that they handle nonexistent (deleted) actions.
- Fixed an issue with "File Count" Schedule Events.
- Cleanup of Input Job Separation Event definitions.
- Schedule Event data now stored in unique SRI files associated a corresponding Job Definition (SJD) file.
- Fixed text edit "Block-Cut" issue in Designer.
- Log Viewer now correctly sets focus on log window.
- Log Viewer now also displays empty logs.

FURTHER INFORMATION

For more information, please contact XLPrint:

XLPrint Americas
By phone: 1 310 829 7684 select option "2" for support. By email: support@usa.xlprint.com By web: www.xlprint.com/support
XLPrint Europe, Africa and the Middle East
By phone: +44 (0) 203 291 3104 select option "2" for support. By email: support@uk.xlprint.com By web: www.xlprint.com/support
XLPrint Asia Pacific
By phone: +61 2 9954 9499 select option "2" for support. By email: support@ap.xlprint.com By web: www.xlprint.com/support