

VERSION 6.9
OCTOBER 2024

Xerox Device Agent User Guide

©2024 Xerox Corporation. All rights reserved. Xerox® and Phaser® are trademarks of Xerox Corporation in the United States and/or other countries. BR17444

Microsoft®, Windows®, Windows Vista®, SQL Server®, Microsoft®.NET, Windows Server®, Internet Explorer®, Windows Media® Center, and Windows NT® are either registered trademarks or trademarks of Microsoft Corporation in the United States and/or other countries.

Linux® is a registered trademark of Linus Torvalds.

Apple®, Macintosh®, and Mac OS® are registered trademarks of Apple Inc.

VMware® is a registered trademark of VMware, Inc. in the United States and/or other jurisdictions.

Cisco® is a registered trademark of Cisco and/or its affiliates

Parallels Desktop is a registered trademark of Parallels IP Holdings GmbH.

Changes are periodically made to this document. Changes, technical inaccuracies, and typographic errors will be corrected in subsequent editions.

Document Version: 6.9 (October 2024)

Revision History

Version	Date	Description
6.9	October 2024	Replaced SQL Server Compact Edition 4.0 with SQLite as the default database. Removed support for SQL Server® 2014. Removed support for Windows® 8.1 and 8.1 x64. Diagnostic upload capability removed.
6.8	May 2024	Removed Windows Server® 2012 & 2012 R2 OS platforms. Added SQL Server® 2022.
6.6	May 2022	Replace Microsoft®.NET framework 4.5.2 with 4.8. Added support for Windows Server 2022 and Windows® 11. Updated screen captures to show collection of Extra Long Color Impressions and Extra Long Black Impressions data for supported devices.
6.5	October 2021	Collect power data usage from devices and send the data to Xerox® Services Manager
6.4	May 2021	By default, the software is set to automatically upgrade after each installation or upgrade. Xerox Device Agent may be disabled or terminated if communication thresholds set in Xerox Services Manager are exceeded.
6.3	October 2020	Now supports SQL Server 2019. Added support for multiple card readers.
6.2	May 2020	Updated support software section. Changed CloudDM to CloudFM.
6.1	October 2019	Added CloudDM Setting. (This does not apply to Xerox® Device Agent Lite installs and upgrades.)

Version	Date	Description
6.0	May 2019	Removed references to Xerox Print Agent; it is no longer supported. Added support for Windows Server 2019. Changed the default auto-upgrade settings to Automatic. Noted ability to re-register an account in Xerox® Services Manager. Send card reader data to Xerox® Services Manager
5.6	October 2018	SQL Server 2017 Support, SNMP Access Denied Status email, and installation failure warning for unsupported .NET versions
5.5	May 2018	Updated Branding, fixed bookmarks, updated supported hardware, added the recovery services feature, added remote SNMP v3 discovery, add Appliance Deployment Appendix
5.4	October 2016	Added registration option for PE upgrades that mimic Xerox Device Agent
5.3	February 2016	Updated supported hardware and software requirements, added support for Macintosh environments
5.2	June 2015	Added features from the 5.1 and 5.2 releases. Updated the hardware and software requirements.
5.0	July 2014	Rewritten for clarity; proxy consolidation updates
1.1	April 2013	Operating System: Added Windows® 7 Home Edition Removed Windows® 2008 r2 Domain Controller support Memory: Removed Windows® 2012 Domain Controller support

Contents

1. Introduction.....	1
Product Overview	1
Data Security.....	1
Using this Guide	1
2. Getting Started	2
Checking the Requirements.....	2
Hardware and Software.....	2
Requirements to Run on a Macintosh Operating System.....	3
Unsupported Configurations.....	3
Database Configurations.....	4
Installing the Software.....	4
Uninstalling the Application.....	7
Automatic Updates.....	7
Disablement and Termination Thresholds.....	8
3. Configuring the System	9
Overview.....	9
Using the Configuration Wizard.....	9
Registering the Account.....	9
Starting the Wizard.....	9
Searching for Printers.....	19
Opening the Application	20
4. Using the Interface.....	21
Overview.....	21
Understanding the Screens.....	22
Viewing the Printers Screen.....	22
Viewing the Synchronize Screen	29
Viewing the Settings Screen.....	29
Using the System Tray	30
Resizing the Application	31
5. Working with Printers.....	32
Overview.....	32
Adding a Printer.....	32

- Adding Printers by IP Address or DNS Name32
- Adding Multiple Printers.....33
- Adding a Direct Printer34
- Deleting a Printer35
- Exporting the Printer List35
- Viewing Printer Properties.....36
 - Checking the Status36
 - Checking Consumables38
 - Viewing Printer Information40
 - Understanding Printer Features43
 - Viewing Transmitted Meters Usage.....45
 - Checking the Usage Summary.....46
 - Viewing the Usage Counter Details.....47
 - Viewing the Power Data.....48
- 6. Synchronizing the Data.....49
 - Overview49
 - Using the Details View.....49
 - Using the Data View.....50
- 7. Configuring the Settings52
 - Overview52
 - Working with the Views.....52
 - Using the Search View53
 - Viewing the Status Read.....57
 - Viewing the Local Alerts59
 - Viewing the Remote Alerts61
 - Working with Administrator Settings.....62
 - Changing the Language63
 - Working with Automatic Updates.....65
 - Viewing the Log.....66
 - Using Diagnostics.....67
 - Using CloudFM67
- 8. Troubleshooting68
 - Recovery Services68
 - Monitoring Recovery Services.....68
 - Running Recovery Services.....68

Contents

Issues and Responses	69
9. Appliance Deployment Appendix	71
Hardware	71
Windows Convenience Modifications.....	71

1. Introduction

Product Overview

The Xerox Device Agent enables the service provider to monitor and assess output devices on your network and provides continuing asset management information. Xerox Device Agent is a Microsoft Windows® device management client that uses Microsoft® SQL Server® to provide automated device meter, supplies, and status retrieval and submission to Xerox Services Manager, and proactive alert monitoring for automatic incident creation and problem resolution. Xerox Services Manager is a web-based application that provides a single point of management for your enterprise's output devices, supplies, and service-related incidents to help you manage costs and increase device and user productivity. Xerox Device Agent features a built-in alert detection system that can warn you when certain conditions exist in monitored devices. It can:

- Discover network-connected printers
- Monitor for status and alert conditions and notify via e-mail when they occur

DATA SECURITY

Xerox Device Agent communicates periodically with Xerox Services Manager. To ensure maximum security for your data, Xerox Services Manager is hosted in an ISO 27001-compliant facility. Data sent to your partner is primarily printer-specific billing counters, supply levels and printer alerts. Data is compressed, encrypted and protected by several mechanisms:

- Xerox Device Agent initiates all contact with Xerox Services Manager and standard firewall configurations on the site are required to enable communication.
- Xerox Device Agent requires a valid proxy, if one is required for Internet communication.
- Xerox Services Manager data server sits behind a secure firewall and is not accessible from the Internet.
- Xerox Services Manager user interface access requires authentication. Xerox Device Agent information is stored in an account specific to the customer site and the access to that account data in Xerox Services Manager is restricted to the Xerox Services Manager account managers.
- All Xerox Services Manager communication is logged and available for viewing.
- Data sent to your networked devices consists primarily of remote commands that allow an account support administrator to request Xerox Device Agent command execution.
- Requests principally involve firmware updates, printer reboots, test page printing and current device status refreshes.
- Xerox Device Agent periodically polls its Xerox Services Manager account for command requests.
- Operations results from command requests are sent to the Xerox Services Manager server, where they are reviewed.

Using this Guide

This guide is intended for users installing Xerox Device Agent.

2. Getting Started

Checking the Requirements

Before you can start using the client software, you must ensure that the requirements described in the following sections are in place.

HARDWARE AND SOFTWARE

This section describes the hardware and software requirements necessary for running the client software.

Item	Requirement
Operating System: (32- and 64-bit)	<ul style="list-style-type: none">• Windows Server® 2016• Windows Server® 2019• Windows Server® 2022• Windows® 10 Professional, Enterprise, Home• Windows® 11 Professional, Enterprise• Apple® OS 10.9.4 or later when run with the Parallels® Desktop hardware emulation software. Go to the Requirements to Run on a Macintosh Operating System section for requirement details.• Microsoft®.NET framework 4.8 Extended (Full Version) installed
Database Server	<ul style="list-style-type: none">• Note: Xerox Device Agent can use a customer's pre-existing full SQL Server. During installation, you can choose a database running on a standalone server.• SQLite• SQL Server® Compact Edition• SQL Server® 2016 SP2• SQL Server® 2017• SQL Server® 2019• SQL Server® 2022• The software includes SQLite.
Memory	<ul style="list-style-type: none">• Windows® 10, Windows® 11, Windows Server® 2016 and higher: 2 GB of RAM (2.5 GB or higher recommended)
Processor	<ul style="list-style-type: none">• 1.7 GHz processor or better
Hard Disk	<ul style="list-style-type: none">• Minimum free space is 450 MB
Minimum Resolution	<ul style="list-style-type: none">• 1024 x 768
Permissions	<ul style="list-style-type: none">• You must install the application software on the client computer using the administrative account or an account with administrative privileges.
Internet Connection	<ul style="list-style-type: none">• Required

Notes

- We strongly recommend that you update your host computers with the latest critical patches and service releases from Microsoft Corporation.
- The Network Transmission Control Protocol/Internet Protocol (TCP/IP) must be loaded and operational.
- Requires SNMP-enabled devices and the ability to route SNMP over the network. It is not required to enable the SNMP service on the computer where Xerox Device Agent will be installed or any other network computers.
- You must install Microsoft.NET framework 4.8 Extended (Full Version) before you install the application.

The application should not be installed on a PC where other SNMP-based applications or other Xerox printer management tools are installed, since they may interfere with each other's operation.

REQUIREMENTS TO RUN ON A MACINTOSH OPERATING SYSTEM

This table lists the system requirements that you must meet to run Xerox Device Agent in a Macintosh environment. You can only run Xerox Device Agent in a Macintosh environment by using hardware emulation software. You cannot run Xerox Device Agent in a native Macintosh environment.

Item	Requirement
Apple Mac Hardware	<ul style="list-style-type: none"> • Intel Core 2 Duo, Core i3, Core i5, Core i7, or Xeon processor
Host Operating System for Apple Mac Platforms	<ul style="list-style-type: none"> • Apple OS 10.9.4 or Later
Hardware Emulation Software	<ul style="list-style-type: none"> • Parallels Desktop v10.2.1 or later required for Apple OS X 10.9 "Mavericks" – 10.10.x "Yosemite" host systems • Parallels Desktop v11.0.1 or later required for Apple OS X 10.11 "El Capitan" host system
Supported Guest Windows Operating Systems Running a Parallels Desktop (32 and 64 bit)	<ul style="list-style-type: none"> • Windows® 10 and Windows® 11
Additional Software	<ul style="list-style-type: none"> • Microsoft®.NET framework 4.8 installed
Memory	<ul style="list-style-type: none"> • 2 GB for all Windows Applications
Hard Disk	<ul style="list-style-type: none"> • Minimum free space is 600 MB (100 MB for Xerox Device Agent and up to 500 MB for the Microsoft®.NET framework, if not previously installed.) • An additional 850 MB of disk space on the boot volume (Macintosh HD) for Parallels Desktop installation

UNSUPPORTED CONFIGURATIONS

This section describes the configurations that are not supported.

- Installation of the application on a computer with another Xerox device management application, such as Xerox Device Manager.

- Native Mac OS® operating system software (i.e., Xerox Device Agent can only run on the Apple Mac Platform when the Parallels Emulation Software is installed.)
- Any version of UNIX® operating systems, Linux® operating systems, Windows® systems running the Novell client, Windows® 7, Windows® 8 RT, Windows® 8.1, Windows® XP, Windows® Vista, Windows NT® 4.0, Windows Media® Center, Windows® 2000, Windows® Server 2008 and 2008 R2, Windows® Server 2003, , Operating systems running Terminal Services for applications and Installation on Windows systems running domain controllers.
- Windows Core Servers without a GUI.
- Since this application has only been tested on VMware® Lab Manager/workstation environment, other virtual environments are not supported.

DATABASE CONFIGURATIONS

The application installs SQLite database engine and database files that store printer data and application settings within the installation directory. No database licensing is necessary for the application. Xerox Device Agent also supports existing instances of SQL Server, as described above.

Installing the Software

In this section, you will learn how to:

- Install the software
- Change the destination folder location of the application

Note

- Before installation, disable the Sleep and Hibernation modes to allow the application to collect and transmit meter information.

To install the software:

1. Log in as an administrator.
2. Double-click the installation file. The Select Language screen displays.

Note: If you do not have Microsoft.NET framework 4.8 Extended (Full Version), the installer displays an error message prompting you to install .NET framework 4.8 Extended (Full Version) before you continue with installation. You can download the .NET framework Extended (Full Version) from the Microsoft Web site.

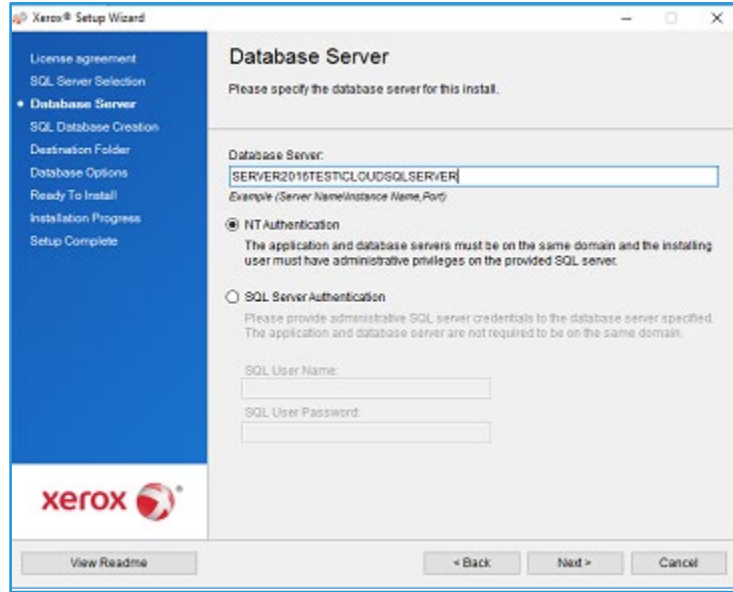
3. Verify that the correct language is highlighted.
4. Click **Install**. The License Agreement displays.
5. Click **View Readme**. The ReadMe file displays.
6. Select I accept the terms of the license agreement radio button.

Note

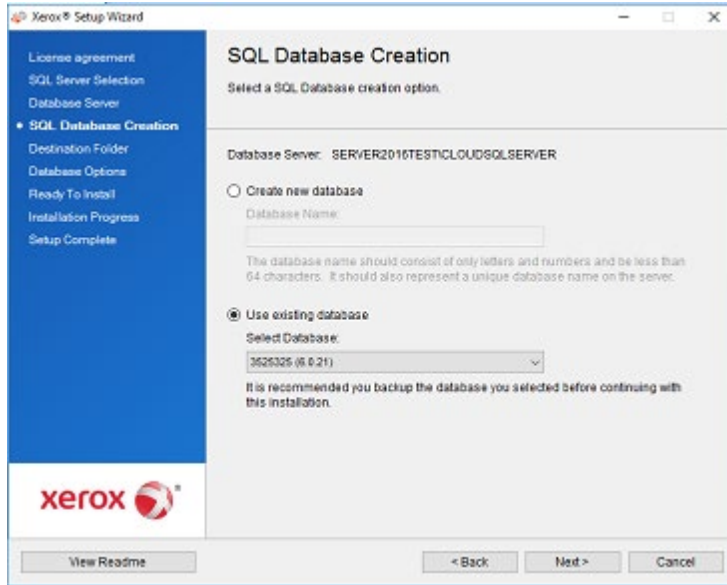
If you are performing a manual update of the application and you have the current version of the application open, you are prompted to accept the End-User License Agreement (EULA).

7. Click **Next**.
8. In the SQL Server Selection screen choose one of the following:

- Use built-in database server (SQLite): Select this option to run the application on a SQLite database server. The SQLite is automatically installed on the customer machine. Go to step 12.
 - Use an existing MS SQL database server: Select this option to use the SQL server that is already available. Go to the next step.
9. Click **Next**. The Database Server screen displays. Provide the authentication type. Click **Next**.



10. Click **Next**. In the SQL Database Creation screen, select one of the following:
- **Create New Database:** if you want to create a new database. With this option, the application backs up your current database, but you still need to configure the application and search for printers again to populate your new database. Use this setting if the account used for the previous installation is unknown, different than the new account or configuration, or if you want to start with a clean installation with default settings
 - **Use Existing Database:** if you want to upgrade using the information from your current database, and if the last installation was for the same account and was properly configured for the new installation.

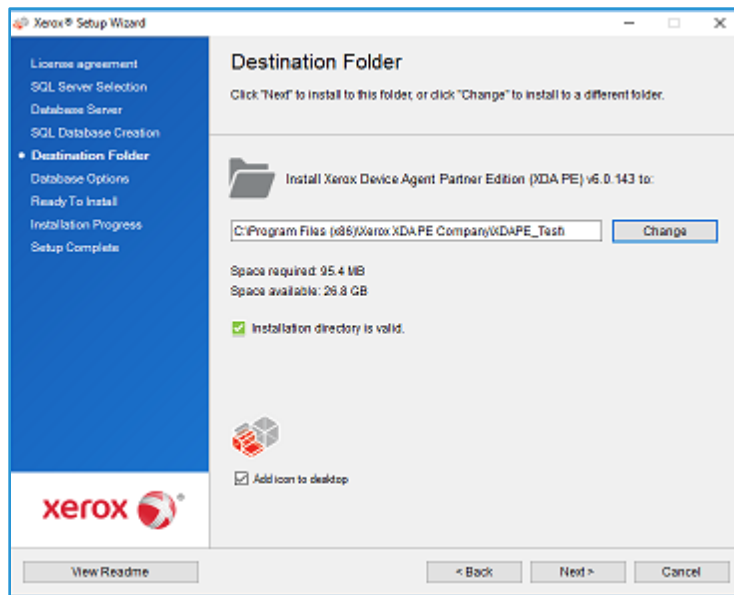


11. Click **Next**. A warning message prompts you to back up the database before upgrading. Click **Yes**.

12. The Destination folder screen displays. Do one of the following:

- To accept the default location for the Destination folder, click **Next** (recommended).
- To change the default location, click **Change**. The Browse for Folder dialog box displays.

Note : If you are installing the application on an operating system in a language other than English where the "Program Files" directory name is localized, the default installation path is displayed in English. The application, however, installs at the correct localized directory for your selected language.



- Navigate to and select the desired folder or create a new one.
- Click **OK**. The dialog box closes.
- Click **Next**.

Note

You cannot install your application in the root directory.

13. Click **Install**. The Installation Progress screen displays, indicating the progress of the installation, after which the Setup Complete screen displays.
14. To launch the application immediately, leave the check box saying “Launch Xerox Device Agent now” selected, and click **Finish** (Recommended). The Configuration Wizard displays.

Note

If other applications are running on your computer, you might experience a delay from the time installation concludes and the Configuration Wizard begins. See the [Registering the Account](#) section for more information.

To launch the application later, de-select the check box and click **Finish**. See the [Registering the Account](#) section for more information.

Notes:

You must complete the Configuration Wizard after installation. See [Configuring the System](#) for further information.

You can click **Cancel** on any screen during the installation. A dialog box displays asking you to confirm the cancellation. If you click **Yes**, the Install Failed! screen displays, indicating that the application remains uninstalled. Click **Finish**. To install the application, you need to run the installer again.

If an automatic or manual installation fails (i.e., because the correct version of .NET is not installed), a pop-up message alerts the user and an error event is added to the application log and an e-mail is sent to the configured administrator account. The pop-up error communications continue until you opt out of the alert or the error is resolved.

UNINSTALLING THE APPLICATION

Note:

This is an optional feature that allows you to uninstall the database when you uninstall the application.

If you decide to uninstall the application, the Uninstall Options screen displays.

1. Select one of the following:
 - **Do not remove the database** if you want to preserve your current database.
 - **Remove the database** if you do not need to preserve your current settings for a future installation. This removes the active database and any future installation creates a new database at the time of installation. If there are any databases backed up during the installation as part of the Database Options, they are not removed.
2. Click **Continue**.

AUTOMATIC UPDATES

The application supports automatic update. When a newer version of the application is released, it is loaded on the Auto Update server, which the application can connect to.

The application contacts the Auto Update server at:

- Scheduled intervals that you specify in the Updates section of the Settings area
- Application startup, if the schedule is in the past

- Your request, from the Updates section of the Settings area

The server identifies if there is a newer version available for download.

If you set the application to prompt you when updates are available, or if you clicked to check for updates, the application asks you to confirm whether you want to update the application.

- If you select **No**, the Next scheduled upgrade dialog opens. Select the day of the week and time of the day when you would like to receive your next reminder to upgrade.
- If you select **Yes**, the application proceeds automatically to:
 - Download the new installer
 - Run the new installer (which closes the application if it is open)
 - Uninstall the older version and install the newer version
 - Run the new version of the application that was just installed

Notes:

- If you are updating the application, but you decide to cancel the installation process, you must run the installation setup file again to complete the installation.
- Depending on where you cancelled the update in the installation process, you could end up with an unusable application.

DISABLEMENT AND TERMINATION THRESHOLDS

When disablement thresholds are enabled in Xerox Services Manager, if Xerox Services Manager has not communicated with Xerox Device Agent within the specified period of time, or the customer or account has been disabled in Xerox Services Manager, then the Xerox Device Agent may be disabled or terminated. These thresholds cannot be edited in Xerox Device Agent.

To re-enable a Xerox Device Agent that has been disabled for exceeding the communication threshold, you need to resolve the issue that caused the disablement. It is impossible to re-enable a Xerox Device Agent that has been terminated; in this instance, you must reinstall the Xerox Device Agent.

When a Xerox Device Agent is pending disablement or termination due to communication failure, warning emails are sent if email alerts are configured in Xerox Device Agent. See [Viewing the Local Alerts](#) section in this document to configure emails.

3. Configuring the System

Overview

You must complete a minimum set of requirements in the Configuration Wizard after installation, according to your site requirements, to use the application.

The Configuration Wizard is divided into two sections:

- **Register the Account:** Enables communication between the application and Xerox Services Manager.
- **Search for Printers:** Allows you to find a printer or printers for the application to manage and monitor.

Using the Configuration Wizard

This section describes the features you can configure with the Configuration Wizard.

REGISTERING THE ACCOUNT


In the Register the Account section, you can:

- Enter the administrator name, phone number, and e-mail address
- Enter the application registration information
- Modify the system name, if applicable
- For partner edition installations and upgrades, if enabled, elect to mimic a Xerox Device Agent install, which means you are not required to enter a chargeback code. This does not apply to Xerox Device Agent Lite installs and upgrades.
- Configure proxy server and security settings for Internet connectivity
- Modify synchronization settings, if applicable

An Operations Center Administrator can remotely change the registration of a Xerox Device Agent to another account and/or chargeback code in Xerox Services Manager. Xerox Device Agent registrations can be moved between partners within the same Operations Center and even to another Partner Account / CBC in another Operations Center. This function is documented in the Xerox Services Manager Administration Guide.

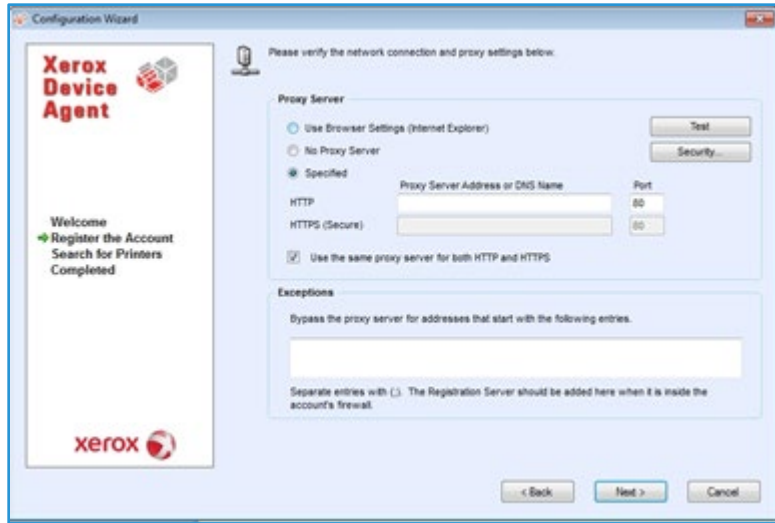
STARTING THE WIZARD

If you launch the application immediately after installation, the Install Completed screen closes, and the Configuration Wizard automatically starts. If you did not launch the application immediately after installation, you can access the Configuration Wizard in one of the following ways:

- Double-click the application icon on the desktop:
- Navigate to the program from the Start menu 
- Right-click the tray icon in the System Tray and select **Open**.

To configure the system:

1. Launch the application. The current availability of computer resources might cause a delay, so allow enough time for it to launch successfully. When the Configuration Wizard starts, the Welcome screen displays.
2. Click **Next**. If the application cannot connect to the Internet or communicate with the registration server, the Proxy Server screen displays.



Note

You can use this screen to verify your network communication and proxy server settings by clicking **Test**. The Communications Test dialog box displays, indicating a green checkmark for successful communication validation with Internet Connection, the Registration Server, and the Update Server.

3. In the Proxy Server section, select one of the following options to verify that your proxy server settings allow you to connect to the Internet:
 - **Use Browser Settings (Internet Explorer):** By default, this option is selected, allowing you to use the browser settings of the computer where the application is installed to access the Internet.
 - **No Proxy Server:** Select this option if you connect to the Internet directly.
 - **Specified:** Select this option to configure your proxy server settings manually to access the Internet. The application enables the Security button and the Exceptions section.

Note

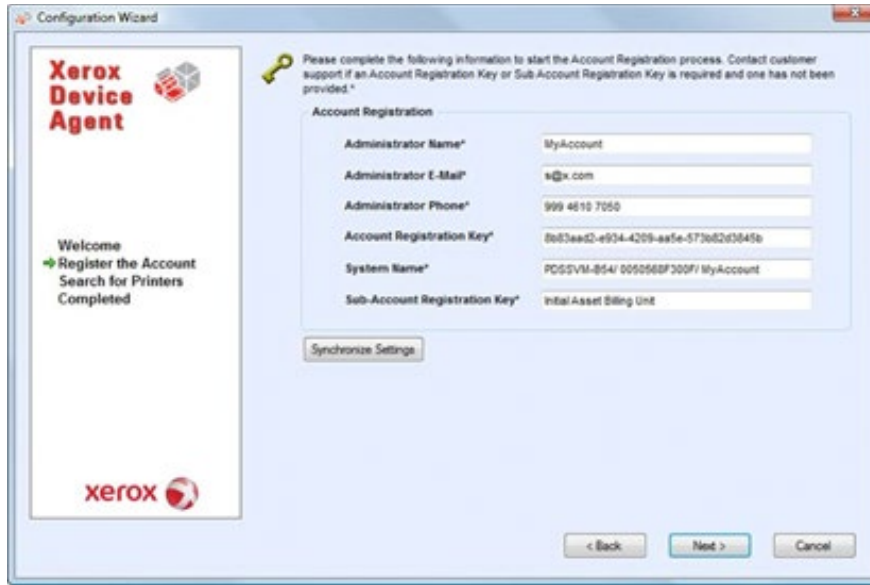
If you need to use bypass addresses, you must select **Specified**.

4. If you selected **Specified**:
 - a. Enter the HTTP or HTTPS (Secure) proxy server address or DNS name and ports. Or, enter information in the HTTP fields and ensure that the Use the same proxy server for both HTTP and HTTPS check box is selected, so that the application populates the HTTPS fields with the same information.

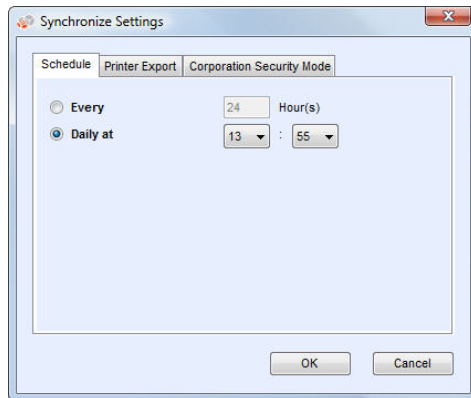
Note

If the addresses, DNS names, or ports are incorrect, the application displays a red exclamation point in the corresponding field. You must correct the information before you can continue to the next step.

- Click **Next**. The next screen in the Register the Account section displays.



- Enter information in all the fields.
- For Partner Edition **only**, if there is an XDA checkbox and it is checked, you will not be required to enter a chargeback code for billing purposes. In addition, the appropriate product codes will be associated with the new Xerox Device Agent.
- If you want to change the default synchronization settings, click **Synchronize Settings**. The Synchronize Settings dialog box displays.



- Schedule Tab:** The application communicates with Xerox Services Manager according to the schedule. During the communication, the application obtains updates or changes to remote alert profiles, submits meter reads, and updates In Scope status of printers.

Note

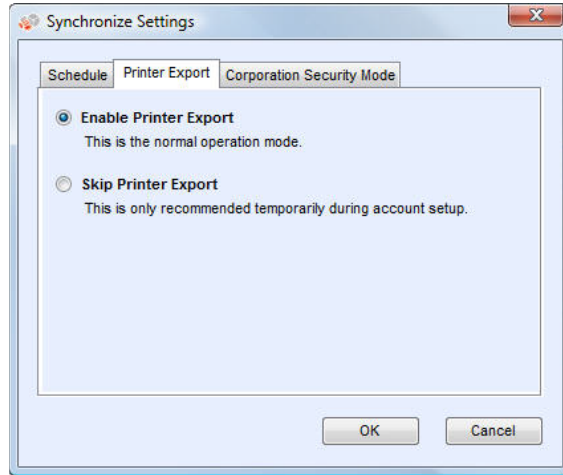
If you choose to synchronize with Xerox Services Manager at a specific time each day, the synchronization frequency cannot be set greater or less than 24 hours.

- Select one of the following:
 - **Every**, and enter the frequency you wish to synchronize (cannot be fewer than 6 hours), or
 - **Daily at**, and click the drop-down arrows to set a specific time of day.

Note

If you power down your computer at the end of the day, do not set your schedule outside of business hours.

- b. **Printer Export:** By default, the application exports the printers and printer data that it finds to Xerox Services Manager. From this export, Xerox Services Manager obtains the printer model name and other data from the printer.



Note

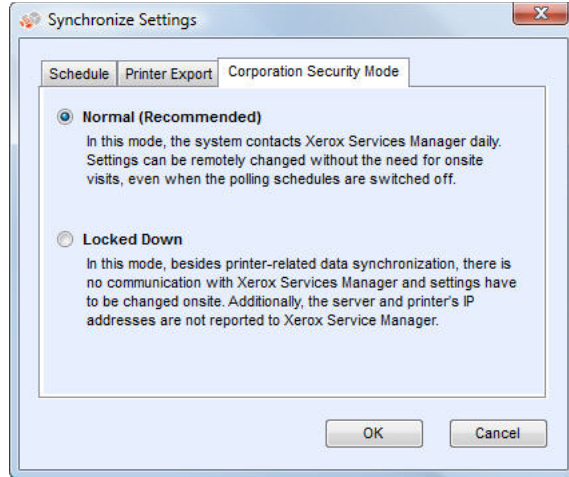
Enable Printer Export is the recommended setting and is selected by default.

If you select the **Skip Printer Export** radio button, a warning message displays, reminding you to enable the printer export after you have completed configuration.

- c. **Corporation Security Mode:** By default, the application contacts Xerox Services Manager daily and allows administrators to remotely change settings, avoiding the need for on-site visits. If your corporation requires a higher level of security, you can lock down the communication, so that there is no communication to Xerox Services Manager except for printer data synchronization. In this mode, any setting changes require an on-site visit, the application does not report any computer or printer IP addresses or site settings to Xerox Services Manager, and Remote Commands from Xerox Services Manager are not supported. It is not recommended that you change this setting. You should discuss any changes with your service provider first. If changes are necessary, do the following.

Note

If your version of Xerox Device Agent does not contain the Corporation Security Mode tab, it operates in Normal mode.



Select the **Locked Down** radio button.

- d. Click **OK** to close the Synchronize Settings dialog box.

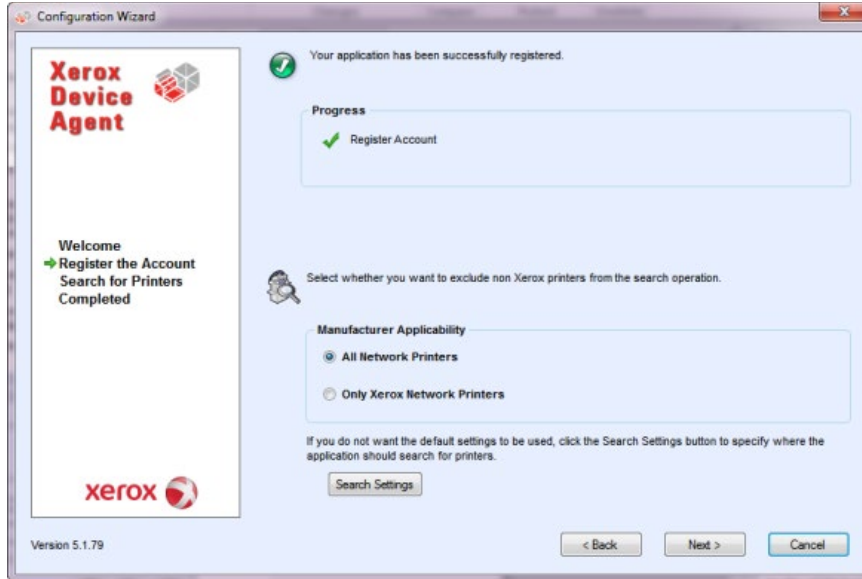
Note

If you enter incorrect information or leave a required field blank at any time during the Configuration Wizard, the application flags the incorrect field with an exclamation point. When you hover over the exclamation point, the application displays a brief message indicating the type of error, such as Invalid Entry. This field must be filled in. You must fix the information before the application allows you to continue to the next screen.

A message displays, indicating that the registration is in progress.

As the application attempts to complete registration, one of the three following statuses displays:

- a. **Pending Registration:** The screen displays a warning, indicating that Xerox Services Manager needs to approve your registration.
 - Click **Try Again** to re-attempt registration.
 - If registration still remains pending, contact your Xerox Support Representative.
- b. **Failed Registration:** The screen displays an error icon and corresponding message, asking you to verify that the information you entered matches the provided correct registration information.
 - Click **Try Again** to re-attempt registration.
 - If the second registration attempt fails, verify that you have the correct registration information.
 - If the key and URL are correct, but your registration still fails, contact your Xerox Support Representative.
- c. **Successful Registration:** If the registration is successful, the screen displays a green checkmark icon.



14. In the Manufacturer Applicability area, select whether you want Xerox Device Agent to search for all printers or only for Xerox® printers.

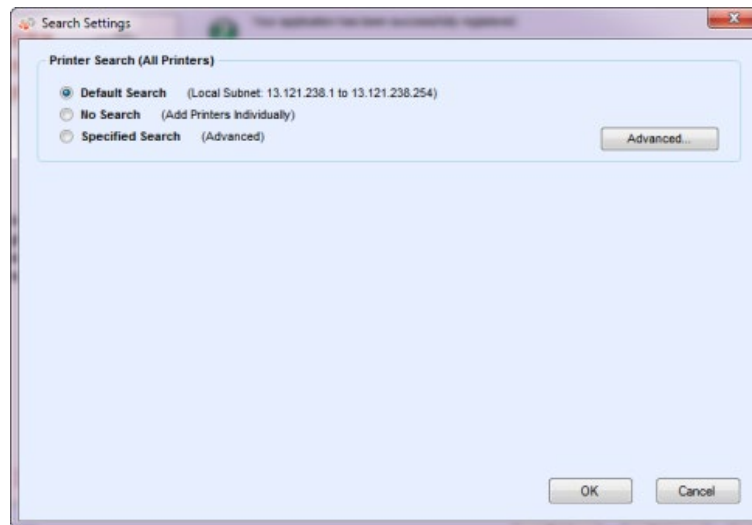
15. If you accept the default selection All Network Printers, click **Next**.

Or, to configure printer search settings other than the default network settings:

a. Click **Advanced**. The Search Settings screen displays.

Note

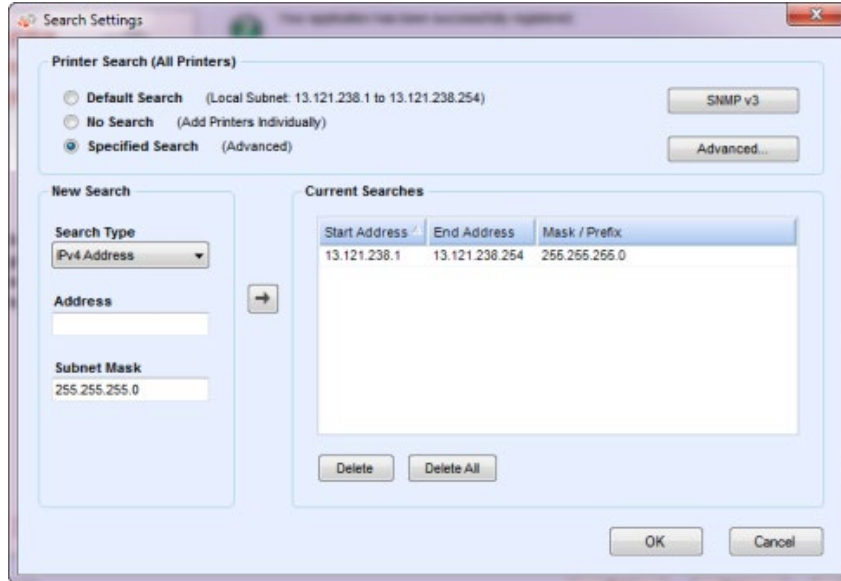
If you do not click **Advanced**, the default search is conducted using your local subnet.



b. Select one of the following:

- **Default Search** to start an automatic search for printers on the local subnet.
- **No Search** to skip setting up your search settings at this time.
- **Specified Search** to search for other printers or addresses outside of the local subnet.

The New Search and Current Searches sections now display. This also enables the SNMP V3 search option.




Note

If you are performing a specified search, the application exercises rule RFC 1918 and allows you to use a subnet mask using internal addresses from x.x.x.0 to x.x.x.255. The first zero and last 255 of the subnet range, however, are reserved.

If you use a subnet mask that is not standard for your subnet class, a message similar to the following displays:

The range specified includes [X] addresses. The subnet mask entered is not the default Class [X] mask. Are you sure you want to use the range as specified?

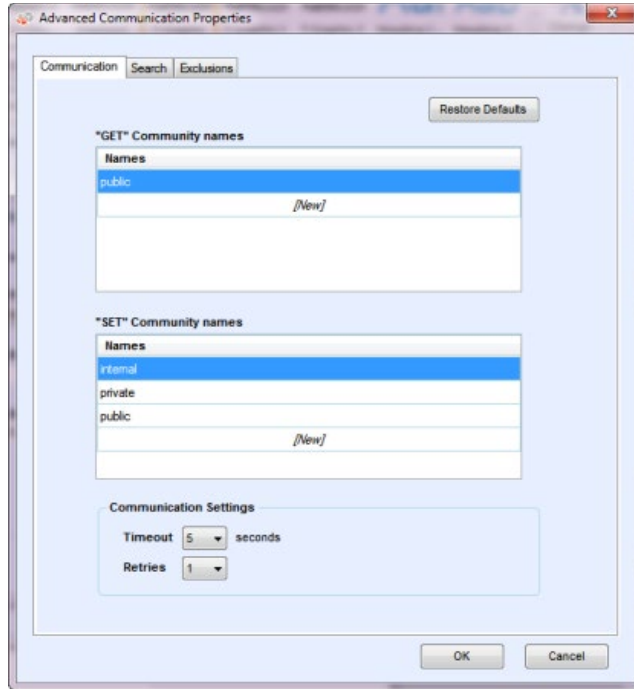
- Verify that the range you specified is what you want.
- Click **Yes** to allow the entry of the range. Click **No** to return to the screen, without adding the range, so the application can update the values.
- Make a selection from the **Search Type** drop-down menu.
- If you selected **IPv4 Address** or **IPv6 Address**, enter the **Address** in the **Specified** field.
- For **IPv6**, enter the value in the **Prefix Length** field.
- If you selected **DNS Name**, enter the name in the **DNS Name** field.
- If you selected **IPv4 Address Range**, enter the address ranges in the **Start Address** and **End Address** fields; and enter the **Subnet Mask** in the specified field.
- If you selected **IPv4 Subnet**, in the **Address in Subnet** field, enter an IP address within the subnet. Then, enter the subnet mask in the **Subnet Mask** field.
- If you selected **Import**, click **Export Template**. Complete the CSV file. Click **Instructions** for details on how to complete the CSV file. When you are ready, click **Select File** to import the list of printer addresses.
- Once you have selected one of the Specified Search options and entered the information into the appropriate fields, click  to add your search information to the Current Searches list.
- If you chose SNMP V3 search, the only search type available is Import. The steps are the same as when using the Import option in the Specified Search.

Note

If the IP addresses in your new search overlap any existing IP addresses in the Current Searches list, the application displays the red exclamation point icon, indicating that you cannot add the

new IP address. To fix this error, go to the Current Searches lists, click Delete or Delete All and search again for the new addresses.

- c. If you want to modify any of the Advanced Communication Properties which include Communications, Search settings, and printers to exclude from searches:
 - Click **Advanced**. The Advanced Communication Properties dialog box opens.



- Modify any of the following settings as needed.
- Enter "GET" community names to retrieve information from networked printers. To ensure a proper printer search, efficient status retrieval, and data collection, you must set the correct "GET" values in this dialog box. The default setting for the SNMP "GET" community name is "public".



- Click **New** and enter a new name.
- Enter "SET" community names to configure parameters on networked printers. To reset the printers, you must configure the correct "SET" names. The default settings for the SNMP "SET" community name are "internal", "private", and "public".



- Click **New** and enter a new name.
- Modify other settings in this dialog box, as necessary.
- Set the number of timeouts and retries in the Communications Settings section.

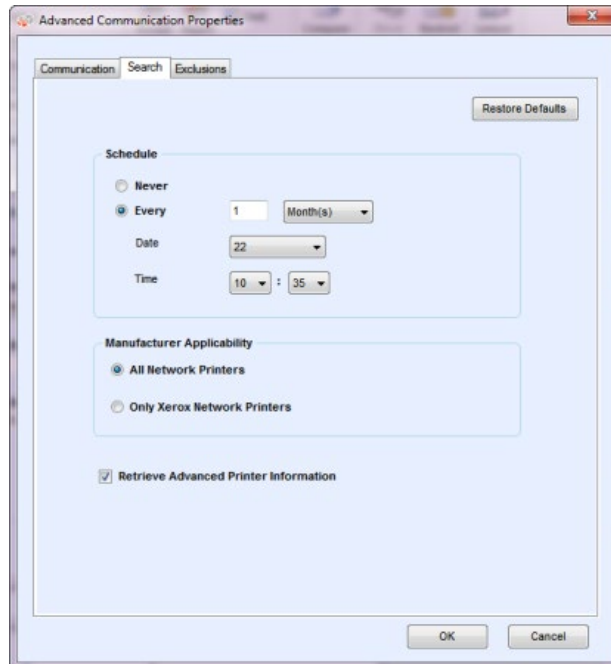


- From the Timeout drop-down list, select a number to identify the number of seconds.
- From the Retries drop-down list, select a number.

Note

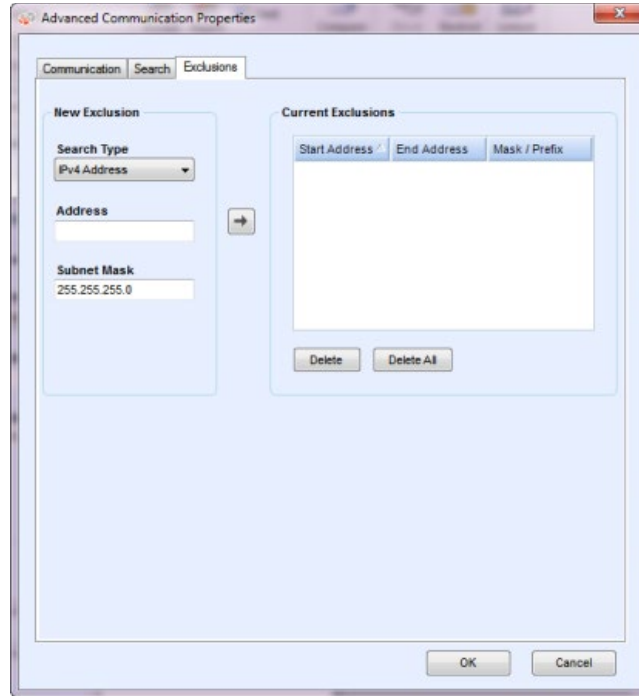
If you want to return to the default settings in this dialog box, click **Restore Defaults**.

- On the Search tab, modify how often the application performs a printer search from the Schedule.



- Click **Never** radio button to disable scheduling.
- Modify the Manufacturer Applicability, if necessary:
 - Select All Network Printers or Only Xerox® Network Printers.

- Select the check box to retrieve advanced printer information such as tray levels, bin levels, and supply information when the printer is initially discovered.
- On the Exclusions tab, enter the IP addresses, subnets, or ranges that you wish to exclude. The process is the same as when you are adding addresses to the discovery list. Follow the same steps you would use to specify a search for printers.



- Click **OK** to close the Advanced Communication Properties dialog box.
- d. Click **OK** to close the Search Settings dialog box.

16. Click **Next** to continue to the Search for Printers section of the Configuration Wizard.

SEARCHING FOR PRINTERS

After you have completed registration successfully, the first screen of the Search for Printers section displays, indicating the progress of your printer search.


Note

The Printer Search may take several minutes, depending on the search type, configuration, and number of potential networked devices.

As the application attempts to complete the printer search, one of two statuses display in the Search for Printers section of the screen: failed or successful.

1. If you receive a **Failed Printer Search** message, use one or more of the following methods to investigate the failed printer search:
 - Verify that all your printers are online, and click **Search Again**.
 - Verify that **SNMP** is enabled on the printers.
 - Verify that **SNMP** community names configured on the application match those on the printers.
 - Verify that SNMP traffic is not being blocked on your network.
 - Skip the printer search, and select Actions > Add Printer Wizard to do a one-off printer search.
 - Click Single Address to add the IP address of a known printer.



- Ping the IP address of the printer from the computer on which the application is running.
- If the application still is unable to find any printers, click Back to return to the first screen of the Search for Printers section, verify and/or adjust your search criteria, and start another search.
- If you exhaust these options and cannot find any printers, contact your Xerox Support Representative.

If you receive a Successful Printer Search message, the Search Results screen displays a check mark  and the number of discovered printers.

2. Click **Next**. The Progress screen displays the communication settings status, followed by the Completed screen.
3. Click **Finish** to close the Configuration Wizard and open the application user interface.

Opening the Application

To access the application after installation and configuration, use one of the following methods:

- Double-click the application icon on the desktop. 
- Double-click the tray icon in the System Tray, which is where the minimized application runs after installation. 
- Navigate to the Start menu programs folder and select the application.
- Right-click the tray icon in the System Tray and select **Open**.

4. Using the Interface

Overview

The Xerox Device Agent user interface is a powerful and easy-to-use printer management interface that is divided into three key sections:

- **Printers:** View printer information, add and delete printers, and go to the customer-facing pages to order supplies, request service, and view meter reads.

For details about printer operations, see [Working with Printers](#).

- **Synchronize:** View communication logs and status, as well as update the schedule settings.
- For details about synchronization, see [Synchronizing the Data](#).
- **Settings:** Modify application settings, such as printer search settings, alert preferences, and language options.

For details about settings, see [Configuring the Settings](#).

To access the desired option:

- Click **Printers**, **Synchronize**, or **Settings** in the left navigation pane. The specified view displays.



Note

Not all features in the screenshot are available in all versions of the application.

In addition to the three main sections, the application contains:

- **Header:** Displays the application name and icon, as well as links to the Configuration Wizard and the About dialog box.
- **Status bar:** Check the status of communication between the application and Xerox Services Manager, as well as determine if the application is searching for printers or collecting printer status.

Understanding the Screens

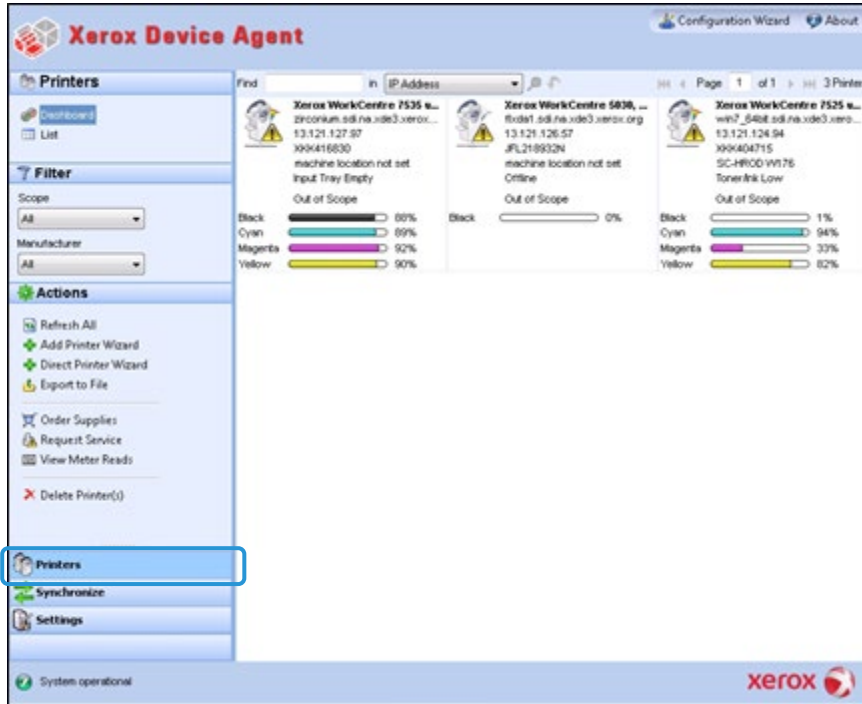
This section provides further details about the three main screens that you can access from the Xerox Device Agent interface.

VIEWING THE PRINTERS SCREEN

The Printers screen is the default view when the application first opens.

To access the Printers screen from another location:

- Click **Printers** in the left navigation pane.



Notes

- Not all features in the screenshot are available in all versions of the application.
- The application supports managing a limited number of printers. If you receive an error message stating that the printer limit was reached, it means that you have reached the limit and cannot add any more printers to the application. To add new printers, first delete one or more previously found printers. Next, modify the search settings to ensure that the deleted printers are not included within any existing IP address, subnet address, or range of IP addresses; and then use the Add Printer Wizard to add new printers.
- The Printers area contains the following views: Dashboard and List. You can toggle between the two views by clicking the view name.

Using the Dashboard View

The first time that you open the application after installation, the Dashboard view displays, indicating the most commonly used data in graphical format.

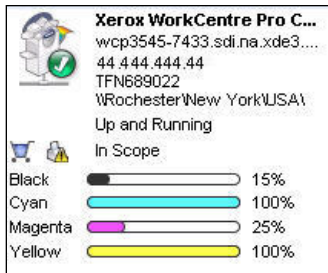


Note

Not all features in the screenshot are available in all versions of the application.

Working with Tiles

In the Dashboard view, each printer is represented in a tile format.



Each tile contains:

- **Printer icon:** Displays a thumbnail representing the printer type.
- **Status icon:** Displays over a printer icon: Describes the status of the printer (no issue, alert, or error).
- **Printer model:** The model of the printer.
- **DNS name:** The printer's DNS host name that the DNS server translates into an IP address.
- **Printer IP Address:** Network address of the printer.
- **Serial Number:** Serial number found on the physical printer.
- **Printer Status:** Status of the printer.
- **Shopping cart icon and warning icon:** For In Scope printers, they take you to the Xerox Services Manager customer-facing pages, so you can order supplies or request service respectively.
- **In Scope/ Out of Scope:** Whether or not the printer is included in the Xerox service contract.

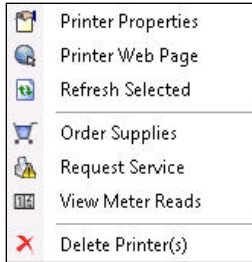
Notes

If your version of the application does not distinguish between In Scope and Out of Scope printers, you do not have access to this feature.








All newly found printers are Marked Out of Scope by default until the Xerox service contract is processed.

- **Indicator Bars for Primary Toner or Ink Levels:** Toner color and percentage text indicators for toner or ink colors if available: cyan, magenta, yellow, and black. The toner or ink level is indicated as Not Empty for printers that do not support supplies percentage. There are some printers that do not provide any toner or ink level information; therefore, the indicator bars do not display. The hourglass symbol displays when supplies have not been retrieved or are in the process of being retrieved.

When you right-click a tile, the Printer Context menu opens.



The Printer Context menu contains the following features:

- **Printer Properties:** Click  to open the Printer Properties window
- **Printer Web Page:** Click  to open the Web page for the printer
- **Refresh Selected:** Click  to refresh the tile information
- **Order Supplies:** Click  to order supplies (For In Scope Printers only)
- **Request Service:** Click  to request service (For In Scope Printers only)
- **View Meter Reads:** Click  to view meter reads (For In Scope Printers only)
- **Delete Printer(s):** Click  to delete printers

Using the List View

The List view shows the same information found in the Dashboard view, but in a table format, and it contains more columns, allowing you to view more printers and more specific information about those printers.



Notes

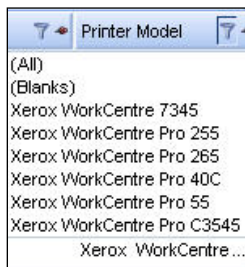
- Xerox Device Agent supports IPv4 and IPv6 printers. Xerox Device Agent displays the IPv6 or the IPv4 address in the IP Address column, depending on which protocol was used to search for the printer.
- The list view includes the Type field, which distinguishes networked printers from direct printers.

You can use the following features in List view **only**:

- Filter using the icon:
- Pin a column
- Group printers
- Use the List view context menu
- Sort printer list

To use a Filter:

1. Click in the column you want to filter. A drop-down menu displays.




2. Select the value you want to use as your filter. The application now filters your list view based on your new criteria.
3. If necessary, click to return the List view to the default settings.

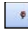
Note

Columns with unique keys, such as Serial Number, IP Address, and DNS Name, do not support filtering.

To Pin a Column

1. Click  in the selected column header. The selected column is now listed first and remains stationary as you scroll through the other fields.

	DNS Name	Printer Model	Manufacturer	Location	Color Capable	In Scop
	xrx84d0a9.sdi.n...	Xerox Phaser 4400 B	Xerox	1'Default Buildi...	No	No
	...	Xerox WorkCentre ...	Xerox	\\RochesterWe...	No	No
	fc2218.sdi.na.x...	Xerox FaxCentre 2...	Xerox	Kris Cube 7413	No	No
		HP LaserJet M434...	HP	boise Idaho	No	No
	xrx8a60bd.sdi.n...	Xerox Phaser 7750...	Xerox	1'Default Buildi...	Yes	No
		XEROX DocuColor ...	Xerox	1'Default Buildi...	Yes	No
		Xerox WorkCentre...	Xerox	1The Current L...	Yes	No
	digitalsender92...	HP 9250C Digital...	HP		No	No
		Xerox WorkCentre...	Xerox	\\RochesterWe...	No	No
		Xerox WorkCentre...	Xerox	~!@#%&'()*_...	No	No
		Xerox Phaser 7760...	Xerox	1'Default Buildi...	Yes	No
	xrx0000aa8dce...	Xerox Phaser 7400N	Xerox	1'Default Buildi...	Yes	No
		XEROX WorkCentr...	Xerox	Lab 7417	No	No

2. If necessary, click  to return the List view to the default settings.


To group Printers:

1. Drag and drop the column headings to the grey area above the headings to create your groups. For example, you can group printers by manufacturer and further group them according to printer model.

Manufacturer	Printer Model	Status	IP Address	Serial Number	DNS Name	Location	Color Capable
[-] Manufacturer : Dell Inc. (2 items)							
[-] Printer Model : Dell Color Laser 3110cn (1 item)							
[-] Printer Model : Dell Color Laser 5110cn (2 items)							
[-] Manufacturer : HP (4 items)							
[-] Printer Model : HP 9250C Digital Sender (1 item)							
[-] Printer Model : HP Color LaserJet 8500 (1 item)							
[-] Printer Model : HP LaserJet 5Si (1 item)							
[-] Printer Model : HP LaserJet M4345 MFP (1 item)							
[-] Manufacturer : Lexmark (1 item)							
[-] Manufacturer : Xerox (20 items)							

Note

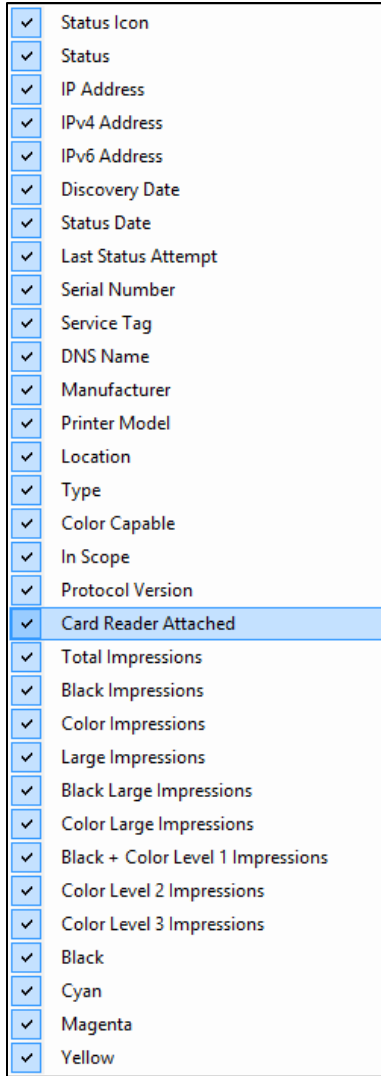
The List view does not support grouping by the IP Address, Serial Number, and DNS Name columns since these columns are unique to each printer and the groupings would only contain one item.

2. If necessary, click  to return the List view to the default settings.

You can customize what columns are indicated in the list view.

To use the Context Menu:

1. Right-click the column header. A Context menu with the column list displays.
2. Select the column name to enable or disable it in the List view.




To sort the Printer List:

1. Click any column header to sort by the column. The list is sorted according to the column selected.

Note

The Dashboard and List view default sort order is based on status alert severity. To change the sort order, go to the List view, sort in a different order, select one of the other filters, and then go back to the Dashboard. The sort order is no longer the default sort. When you close the application, the columns you select and order you specify are automatically saved for future viewing.

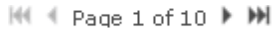
2. If necessary, click  to return the List view to the default settings.

Using the Common Features

The following features are common to both the Dashboard and List views:

- **Paging Controls:** Allow you to navigate easily through your printer list.
- **Filter:** Filter the displayed printers based on whether they are In Scope or Out of Scope.
- **Find:** Look for a specific printer using keyword search criteria.

The **Paging Controls** allow you to navigate through the printer list, so that you can view a specific page number quickly.



With the paging controls you can:

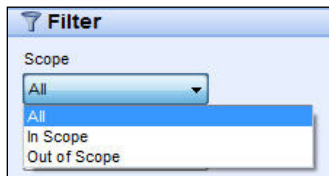
- Click to jump to the beginning or end of a list
- Move forward or backward through each page in the list
- See the total number of pages in the printer list

There are two **Filtering** methods that you can access in both the Dashboard and List views:

- Scope
- Manufacturer

To filter by Scope:

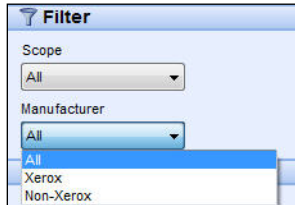
- From the left navigation pane, in the Filter section, select **Scope > In Scope** or **Out of Scope**.



The list is now filtered based on your selection.

To filter by Manufacturer:

- From the left navigation pane, in the Filter section, select **Manufacturer > Xerox** or **Non Xerox**.



The list is now filtered based on your selection.

The **Find** feature allows you to search the list of printers based on the search criteria that you input. The search encompasses the entire printer list and not just those printers that are on the displayed page.




The drop-down menu allows you to select the following types of search data:

- IP Address
- Printer Model
- Manufacturer
- DNS Name
- Serial Number
- Service Tag
- Status
- Location
- Color Capable

- Type
- Card Reader Attached
- PIN Capable
- PIN Enabled
- Protocol Version

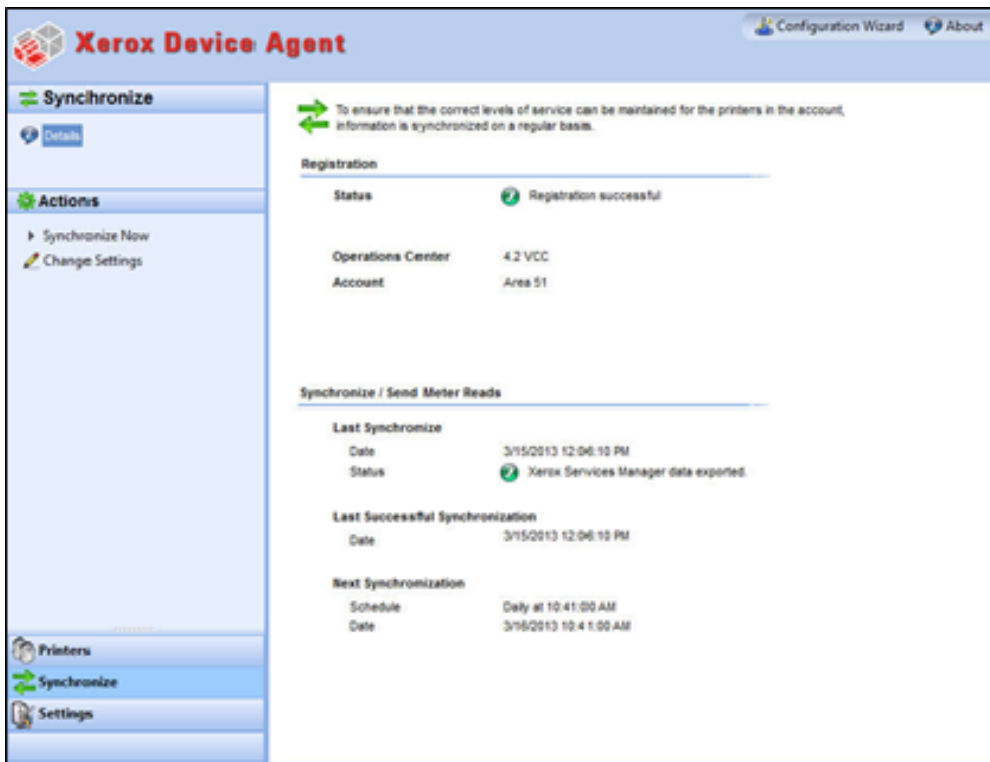
You can enter partial or complete strings to match the values, except for Color Capable, where you click **Yes** or **No** to find the devices accordingly.

To use the Find feature:

1. Enter a search word or words in the **Find** field.
2. Select a find criterion from the drop-down menu.
3. Click the magnifying glass icon. The results display.
4. If necessary, click  to return the List view to the default settings.

VIEWING THE SYNCHRONIZE SCREEN

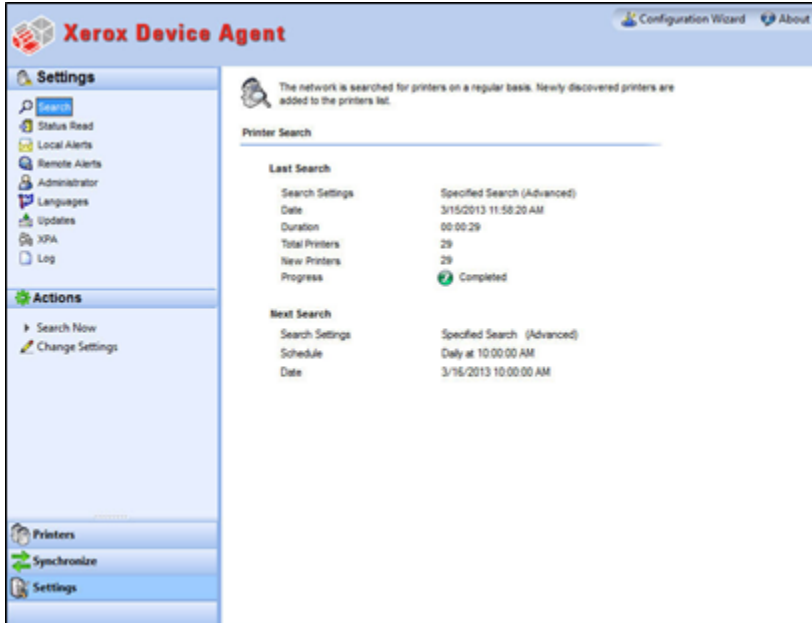
The Synchronize area allows you to synchronize data between the application and Xerox Services Manager, change synchronization settings, as well as review registration status.



See [Synchronizing the Data](#) for further information about this feature.

VIEWING THE SETTINGS SCREEN

The Settings screen allows you to view and select a variety of application configuration options for application actions, such as search for printers and obtain printer status, as well as other application functions.

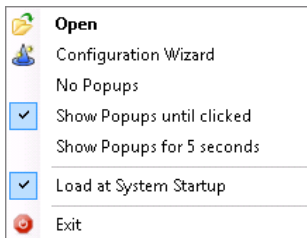


See [Configuring the Settings](#) for further information about settings.

Using the System Tray

In the System Tray is an icon that indicates that the application is still running and has not been exited even after you close the user interface.

When you double-click the tray icon, the user interface displays. When you right-click the tray icon, the System Tray Context menu displays.



The System Tray Context menu contains the following features:

- **Open:** Opens the user interface.
- **Configuration Wizard:** Opens the Configuration Wizard.
- **No Popups:** Prevents popups in your System Tray.
- **Show Popups until clicked:** Shows popups until you click the popup message.
- **Show Popups for 5 seconds:** Shows popup messages for five seconds.

Note

The popup options act as radio buttons, so you can only have one of the three options selected at one time.

- **Load at System Startup:** Turns on or off the ability to run the user interface part of the application at startup. When this option is turned on, Xerox Device Agent launches automatically when you login. You do not have to select this option for scheduled communications.
- **Exit:** Exits the application and removes the tray icon from the System Tray.

Resizing the Application

After the application is open, you can resize it to fit your screen. Hover your mouse over any area on the application border; your cursor changes to a white double arrow, allowing you to resize the screen. You may also use the standard window control menu to resize the window by clicking it or pressing the Alt-Space key combination on the keyboard.

Notes

- The application does not retain the new size after you exit the application or if you reboot your system.
- Although the installation process places the application on the desktops of all users, only administrators and power users can access the software.

5. Working with Printers

Overview

This section describes the multiple ways you can work with printers using the Xerox Device Agent. You can add or delete a single printer or multiple printers, export the printer list, and view the various printer properties, such as status, consumables, and usage summary.

Adding a Printer

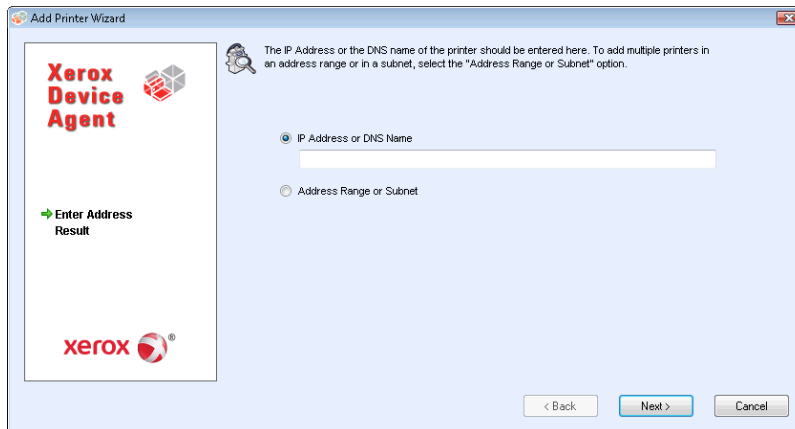
You can add a printer to your system with the Add Printer Wizard, which is accessed through the Actions menu. The Add Printer Wizard can:

- Add a printer to your current list of printers
- Help identify issues with the printer search or SNMP configuration on your network
- Move a printer back into the list if an IP address has changed and is not within the current search settings

You can add a single printer by IP address or DNS name; or you can add multiple printers using the address range selection in the wizard.

ADDING PRINTERS BY IP ADDRESS OR DNS NAME

1. Select **Actions > Add Printer Wizard**. The Add Printer Wizard displays. By default, the IP Address or DNS Name option is selected.



2. Enter the printer's **IP address** or **DNS Name**.
3. Click **[Next]**. A progress screen displays, indicating the status of the search. The Results screen displays.
4. Do one of the following:
 - Click **[Add Another Printer]** to search for another printer.
 - Click **[Finish]** to add the new printers to the printer list.

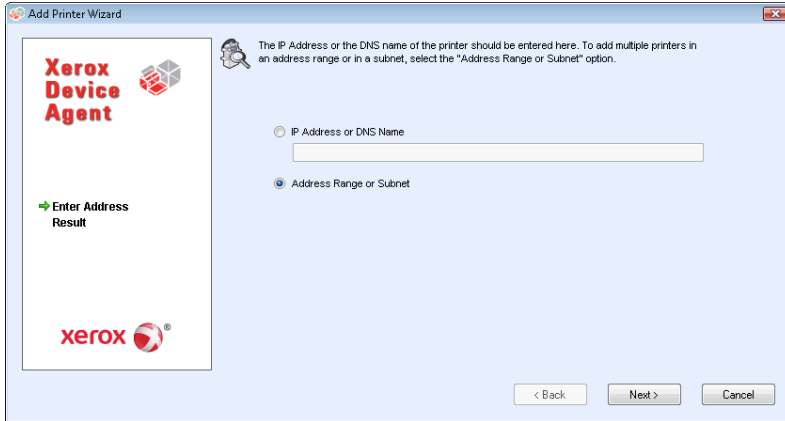
Note

If a printer is not found, the search results describe reason for the failed search. Click **Back** to verify the entered information or to enter a different address.

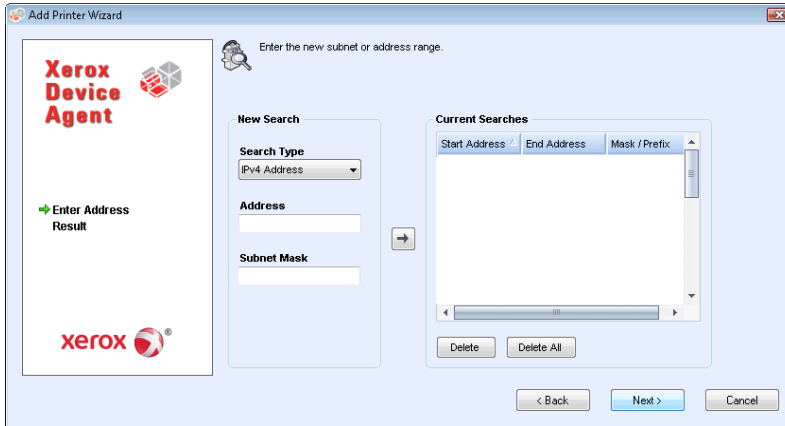
ADDING MULTIPLE PRINTERS

Use the following procedure to add a range of printers to your system.

1. Select **Actions > Add Printer Wizard**. The Add Printer Wizard displays.



2. Select **Address Range or Subnet**. The current search settings display.



Note

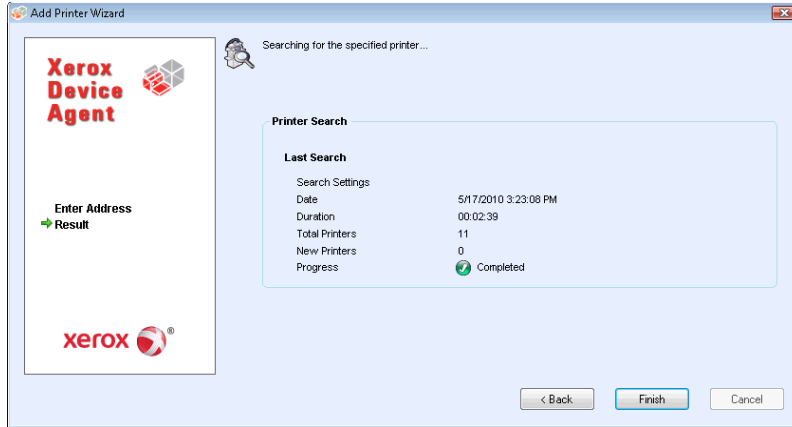
The changes made on this screen are reflected in the Specified Search area under **Settings > Search > Change Settings**.

3. Enter or modify your settings.
4. Click **[Next]**. A progress screen displays, indicating the status of the search.
5. Click **[Finish]**.

Note

If you select **Finish** and the search is not complete, a prompt displays asking you to stop the search or allow it to continue. If you allow the search to continue, any new printers are found and the current status displays on the left- bottom corner of the screen.

A results screen displays the total number of printers found.

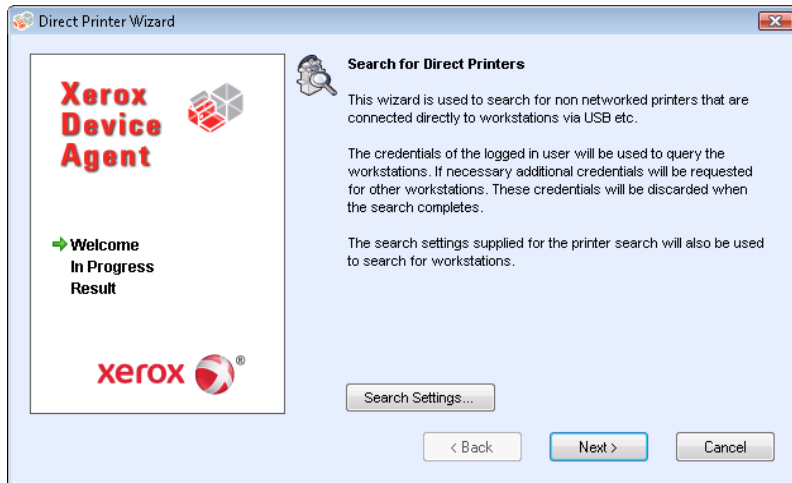


6. Click **[Finish]**. The new printers are added to the printer list.

Adding a Direct Printer

The Direct Printer Wizard allows you to add non-networked printers that are directly connected to workstations via a USB.

1. Connect a printer to your workstation.
2. Select **Actions > Direct Printer Wizard**. The Direct Printer Wizard displays.



3. Click **[Next]**. Xerox Device Agent searches for printers using your login information. The status of the search displays.

Note

- Xerox Device Agent uses these credentials for future direct printer wizard searches until you restart the application.
- If Xerox Device Agent requires additional credentials to access other workstations, Xerox Device Agent displays another screen prompting you for those credentials.

The Result screen displays the directly connected printers. Xerox Device Agent adds the new printer to the printer list.

Deleting a Printer

Use the following procedure to delete a printer from the Printer Dashboard or List view.

1. From the Dashboard, select the **tile(s)** of the printer you want to delete; or from the List, select the **row(s)** of the printer you want to delete.
2. Select **Actions > Delete Printer(s)** or **Context > Delete Printer(s)**. The Delete Printer(s) dialog box displays prompting you to verify deletion of the selected printer(s).
3. Click **[Yes]**. The printers no longer display on the List or Dashboard views.

Note

If a deleted printer is still on the network and the search criteria (IP address range) includes the address of the printer, it is added again at the next scheduled search.

Exporting the Printer List

You can export the discovered printer list for import into Xerox Services Manager via a CSV file. The exported file contains all the meter data including meters, unit types, and the last transmitted meter to Xerox Services Manager for each printer.

If you are an advanced user with access to Xerox Services Manager, do the following:

Note:

Instructions for advanced users on how to import new assets, update existing assets, create an asset export/import template, or re-import the file to Xerox Services Manager are available in your Xerox Services Manager documentation.

1. Verify that all the model names map to the same model alias in Xerox Services Manager.
2. Insert the information into a Xerox Services Manager template.
3. Import the information into Xerox Services Manager.
4. If your version of the application has filter options, verify that **All** is the selected filter.
5. From the Left Navigation pane, select Printers > Dashboard Actions > Export to File; or Printers > List > Actions > Export to File. The Export data dialog box displays.
6. Navigate to the save location for your CSV file.
7. Enter a filename that is easy to identify.
8. Click **[Save]**. A message displays indicating that your export was successful.
9. Click **[OK]**.
10. In Xerox Services Manager, create an asset export/import template of required fields for updating or importing a new asset into Xerox Services Manager.
11. In the exported printer CSV file, edit the model, manufacturer, serial number, etc., as necessary.
12. Copy and paste the data from the CSV file into the Xerox Services Manager import template in the correct column headers.
13. Import the asset template into Xerox Services Manager.

Viewing Printer Properties

On the Printer Properties screen are several tabs, where you can check the following types of information about the printer.

- Status
- Consumables
- Information
- Features
- Usage Summary
- Usage Details
- Transmitted Meters
- Power

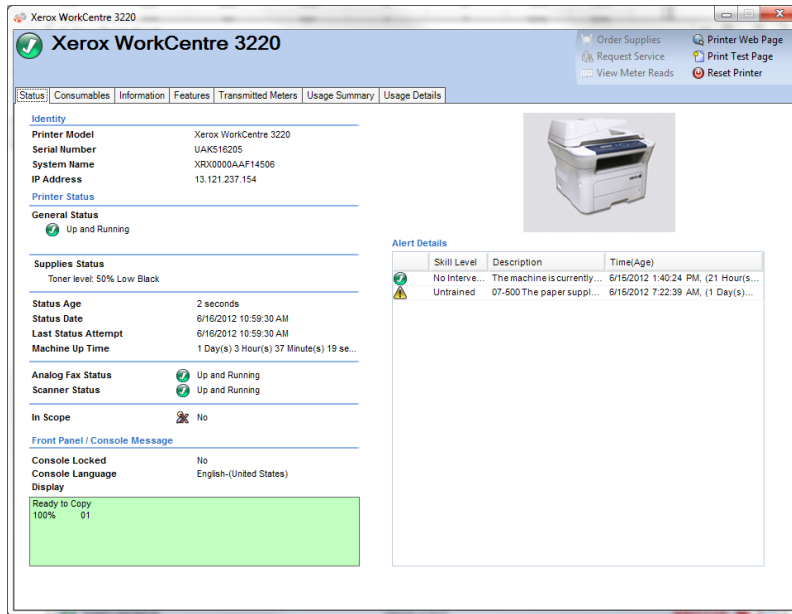
To access the printer properties for a selected printer:

Dashboard view

1. Double-click the **tile** OR
2. On the tile, right click **Printer Properties**. The Printer Properties screen displays.

List view

1. Double-click the **row** OR
2. On the row, right click **Printer Properties**. The Printer Properties screen displays.



Note

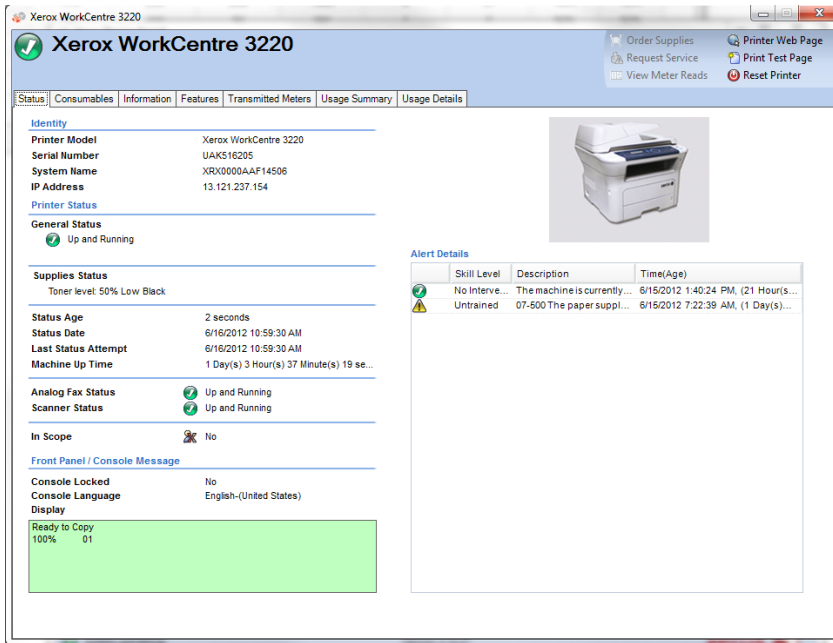
Not all features shown are available in all versions of the application.

CHECKING THE STATUS

In the Status tab, you can check:

- Identity
- Printer Status
- Front Panel/Console Message

- Alert Details



Note

Not all features shown are available in all versions of the application.

Identity

Feature	Description
Printer Model	Name of the model
Serial Number	Unique identity assigned by the manufacturer
System Name	Friendly name for the printer
IP Address	Network address

Printer Status

Feature	Description
General Status	Printer's current status
Supplies Status	Current supply requirements Note: If the color value of a toner cartridge cannot be determined, then the toner supply status omits the color from the status message.
Status Age	When the last status was retrieved from the printer
Status Date	Date that the printer has been at the current status (the date format might change depending on your printer's geographic location)
Last Status Attempt	Date the application attempted to retrieve the printer status
Machine Up Time	Length of time that the printer has been running since it was last restarted.
Analog Fax Status	Current state of the analog fax via a status icon
Scanner Status	Current state of the scanner via a status icon

Front Panel/Console Message

Feature	Description
Console Locked	When the printer cannot be configured using the local console screens without administrator-equivalent privileges
Console Language	Language in which the console message is displayed
Display	Text exposed on the local console of the printer

Alert Details

Feature	Description
Status Icon	Severity condition of each alert (i.e. warning, critical, ok, etc.)
Skill Level	Level of knowledge required to resolve the current alert condition
Description	Detailed information about the current alert condition. For most Xerox® printers, might include a status code, a description of the alert condition, a repair action required to eliminate that alert condition, and the state of printing and other services available within the printer.
Time (Age)	When the alert condition occurred, as well as the duration of that alert condition (time value enclosed within parentheses).

Note

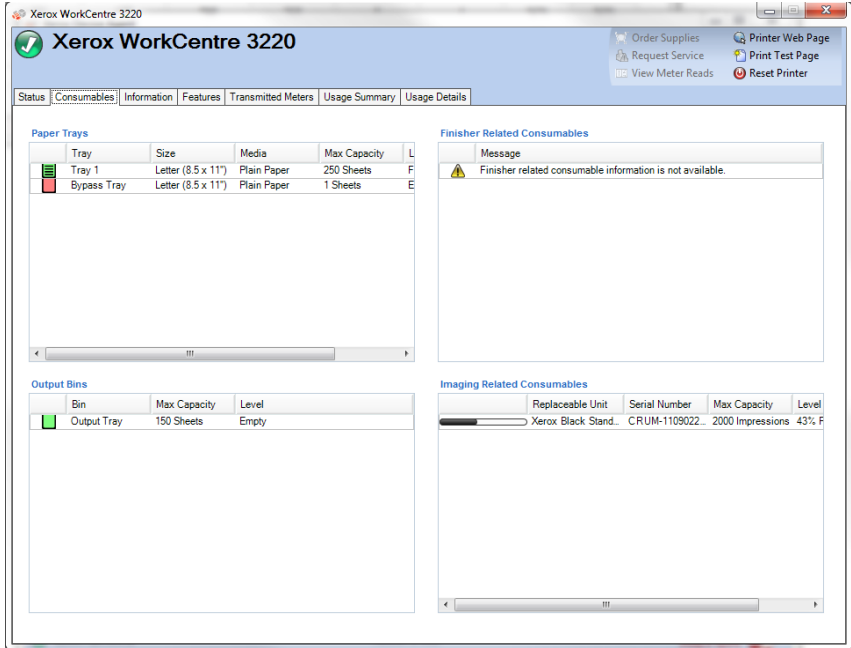
Clicking Refresh or Refresh Selected only updates the Dashboard and List view data; it does not update the printer information. If a printer status that is newer than five minutes gets updated in the database, the application assumes the database is correct and does not retrieve the more recent information from the printer. To ensure you see the latest printer information on the Printer Properties screen, use one of the following two procedures:

- If your version of the application distinguishes between In Scope and Out of Scope devices, this procedure only applies to In Scope printers. Select **Settings > Status Read**, and click **Read Now**. OR
- After five minutes has elapsed from the last status retrieval, re-open the Printers Properties screen. Look at the **Status Age** field on the Status tab to verify the last retrieval time.

CHECKING CONSUMABLES

In the Consumables tab, you can check:

- Paper Trays
- Output Bins
- Finisher Related Consumables
- Imaging Related Consumables



Note

Not all features shown are available in all versions of the application.

Paper Trays

Feature	Description
Tray	Name of the tray that contains paper
Size	Size of the paper contained in the paper tray
Media	Type of media currently loaded in the paper tray
Level	Current level of paper contained in the paper tray

Output Bins

Feature	Description
Bin	Name of the output tray
Max Capacity	Maximum amount of paper that can be held in the output tray
Level	Current level of paper contained in the paper tray

Finisher Related Consumables

Feature	Description
Replaceable Unit	Name of a finisher-related consumable that can be replaced in the printer
Max Capacity	Maximum amount of the consumable that is available
Level	Current level of consumable

Imaging Related Consumables

Feature	Description
Replaceable Unit	Name of an imaging-related consumable that can be replaced in the printer
Max Capacity	Maximum amount of the consumable that is available
Level	Current amount of the consumable that is left in the printer
Serial Number	Consumable serial number
Installation Date	Date the consumable was last replaced

Note

If you enable and disable the IPv6 configuration multiple times during the discovery of the Xerox® Phaser® 6360DX printer, the printer stops supplying some information once you reach the given threshold. As a result, the Dashboard view and the Consumables tabs are missing certain consumables values. To reset the printer and ensure that the values are captured successfully, wait 24 hours before you retry the device.

VIEWING PRINTER INFORMATION

In the Information tab, you can check:

- Printer Information
- Multinational
- IP Information
- Peripherals

Xerox AltaLink B8055

Order Supplies | Request Service | View Meter Reads | Printer Web Page | Print Test Page | Reset Printer

Status | Consumables | **Information** | Features | Transmitted Meters | Usage Summary | Usage Details

Printer Information		IP Information	
Printer Type	Network Printer	DNS Name	N/A
Manufacturer	Xerox	IP Address	10.24.70.183
Printer Model	Xerox AltaLink B8055	IP v4	
Firmware Level	SS 101.008.109.33800, NC 101.008.33800, UI -----, ME	Address	10.24.70.183
Serial Number	SN0814808	Source	Static
Customer Asset Number	1122	Subnet Address	10.24.70.0
Xerox Asset Number	0009	Mask / Prefix	255.255.255.0
Service Tag	N/A	Default Gateway	10.24.70.1
System Name	nnn	Last Known Address	N/A
MAC Address	9C934E4D886A	IP v6	
Printer Location	PL99	Address	N/A
System Contact	SC99	Network Address	N/A
Discovery Date	8/3/2020 6:15:31 AM	Prefix Length	N/A
Protocol Version	SNMP v3	Last Known Address	N/A
Multinational		Peripherals	
Printer MIB Language	English-(United States)	Card Reader	
Console Language	English-(United States)	Card Reader Type	Proximity
		Interfaces	HD,Keyboard
		Vendor ID	214c
		Product ID	202
		Serial Number	MBSNB10213128FE
		Firmware Version	Unknown

[1] Additional Card Reader Connected

Note

Not all features shown are available in all versions of the application.

Printer Information

Feature	Description
Printer Type	Network printer classification
Manufacturer	Vendor that produced the printer
Printer Model	Name of the printer model
Firmware Level	Version of the software modules, and sometimes the hardware modules, contained in the printer
Serial Number	Unique identity assigned by the manufacturer of the printer – you can copy and paste the number from this field
Customer Asset Number	Unique number used to track the printer as an asset
Xerox Asset Number	Unique number used by Xerox to track the printer as an asset
System Name	Friendly name for the printer
MAC Address	Physical address of the printer at the hardware level
Printer Location	Physical location of the printer
System Contact	Person responsible for the printer
Discovery Date	Date and time the printer was first detected by the application
Protocol Version	Protocol, and version of that protocol, used to search for the printer

Multinational

Feature	Description
Printer MIB Language	Language of the text for the printer's implementation of RFC 3805 - The Printer MIB v2
Console Language	Language of the text on the local console

IP Information

Feature	Description
DNS Name	Identity of the printer when using the Domain Name Services portion of the TCP/IP protocol suite
IP Address	Network address

Feature	Description
IP v4	<p>If the printer was found with an IPv4 address, the following fields are populated:</p> <p>Address – IPv4 address</p> <p>Source – how the IP address was assigned (i.e. DHCP, static, etc.)</p> <p>Subnet Address – subnet portion of the IP address</p> <p>Mask/Prefix – portion of IP address that should be considered as the printer identifier, and portion that should be considered as the subnet address</p> <p>Default Gateway – network address of the default router connected to the local subnet to which the printer is connected</p> <p>Last Known Address – last known IP address of the selected printer</p>
IP v6	<p>If the printer was found with an IPv6 address, the following fields are populated:</p> <p>Address – the IPv6 address</p> <p>Source – how the IP address was assigned (i.e. DHCP, static, etc.)</p> <p>Network Address – network address</p> <p>Prefix Length – numerical length of the prefix</p> <p>Default Gateway – network address of the default router connected to the local subnet to which the printer is connected</p> <p>Last Known Address – last known IP address of the selected printer</p>

Peripherals Card Reader

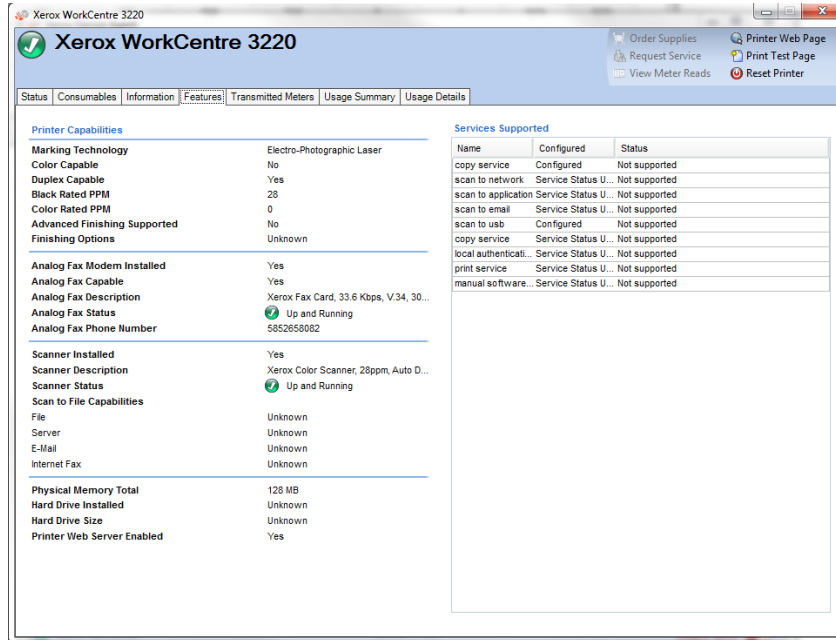
If card readers are supported and connected, the following fields display the relevant details.

Feature	Description
Card Reader Type	Classification
Interfaces	Card reader interface details.
Vendor ID	Varies based on manufacturer.
Product ID	Varies based on model.
Serial Number	Unique identity assigned by the manufacturer of the card reader.
Firmware Version	Software version of the card reader.
[#] Additional Card Reader Connected	If multiple card readers are enabled, the total number of card readers displays. However, the details only display for the first card reader. (Versalink does not support multiple card readers.)

UNDERSTANDING PRINTER FEATURES

In the Features tab, you can check:

- Printer Capabilities
- Services Supported



Note

Not all features shown are available in all versions of the application.

Printer Capabilities

Feature	Description
Marking Technology	Type of technology contained in the printer to generate marks on paper (e.g. laser, solid ink, etc.)
Color Capable	Whether or not a printer supports color printing
Duplex Capable	Whether or not the printer is configured to generate prints on both sides of the paper
Black Rated PPM	How fast a printer can produce black images on a single sheet of paper
Color Rated PPM	How fast a printer can produce color images on a single sheet of paper
Advanced Finishing Supported	Whether or not a printer contains finishing capabilities
Finishing	Type of finishing capabilities supported by the printer such as staple, bind, fold, punch, stack, insert, etc.
Analog Fax Modem Installed	Whether or not an Analog Fax Modem is installed on the printer
Analog Fax Capable	Whether or not the Analog Fax services is enabled on the printer

Feature	Description
Analog Fax Description	Additional hardware-related details about the Analog Fax Modem
Analog Fax Status	Status of the Analog Fax service and related hardware
Analog Fax Phone Number	Phone number used by the Analog Fax Modem
Scanner Installed	Whether or not a Scanner module is installed in the printer
Scanner Description	Additional hardware-related details about the Scanner module
Scanner Status	Status of the Scanner module
Scan to File Capable	Whether or not the Scan-to-File service is enabled
Scan to Server Fax Capable	Whether or not the Scan-to-Server Fax service is enabled
Scan to E-mail Capable	Whether or not the Scan-to-E-mail service is enabled
Internet Fax Capable	Whether or not the Scan-to-Internet Fax service is enabled
Physical Memory Total	Amount of physical memory installed on the network controller printer
Hard Drive Installed	Whether or not a hard disk has been installed in the printer
Hard Drive Size	Size of the hard disk installed in the printer
Printer Web Server Enabled	Whether or not the embedded Web server feature of the printer is enabled

Supported Services

Feature	Description
Name	Name of a service supported on the printer
Configured	Whether or not a service is configured for use on the printer
Status	Current status of a service on the printer; also the impact that alert conditions have on a service

VIEWING TRANSMITTED METERS USAGE

The Transmitted Meters tab shows the latest usage meter counters that were transmitted to Xerox Services Manager. This provides the ability to validate, or cross-reference, that the printer meters' values shipped to Xerox Services Manager or meters invoiced to a client.

Note

These meter values are read-only.

Xerox PrimeLink C9065

Order Supplies | Printer Web Page
Request Service | Print Test Page
View Meter Reads | Reset Printer

Status | Consumables | Information | Features | **Transmitted Meters** | Usage Summary | Usage Details | Power

Transmission Status

Last Synchronization: 2/17/2022 8:17:28 AM
Last Device Status Read: 2/17/2022 8:23:17 AM

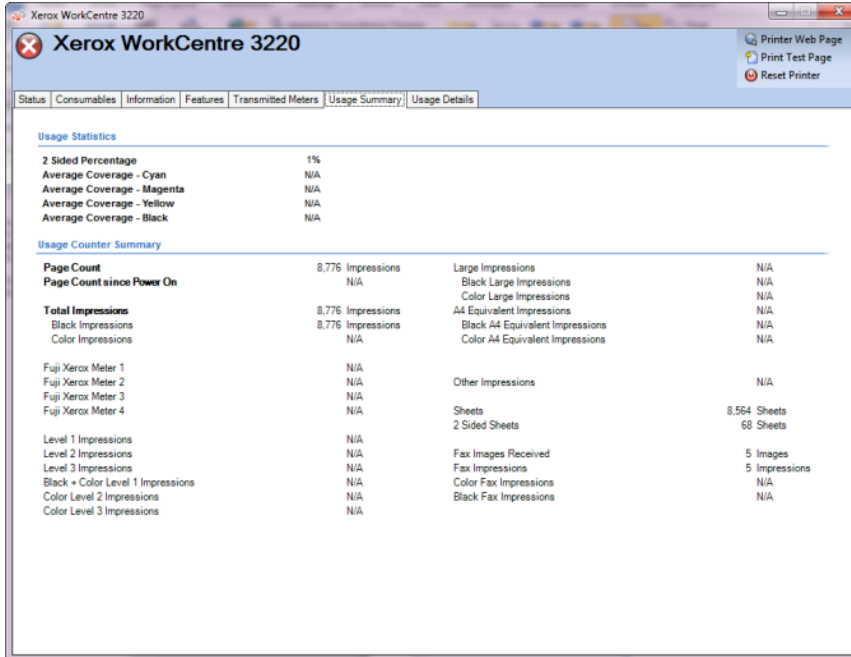
Transmitted Meter Information

Page Count	1,362 Impressions	Large Impressions	66 Impressions
Page Count since Power On	6 Impressions	Black Large Impressions	37 Impressions
		Color Large Impressions	29 Impressions
Total Impressions	1,362 Impressions		
Black Impressions	948 Impressions	Sheets	669 Sheets
Color Impressions	414 Impressions	2 Sided Sheets	20 Sheets
Fuji Xerox Meter 1	N/A	Fax Images Received	0 Impressions
Fuji Xerox Meter 2	N/A	Fax Impressions	0 Impressions
Fuji Xerox Meter 3	N/A		
Fuji Xerox Meter 4	N/A	Extra Long Impressions	6 Impressions
Level 1 Impressions	N/A	Black Extra Long Impressions	4 Impressions
Level 2 Impressions	N/A	Color Extra Long Impressions	2 Impressions
Level 3 Impressions	N/A	Extra Long Sheets	3 Impressions
Black + Color Level 1 Impressions	N/A	Black Extra Long Sheets	2 Sheets
Color Level 2 Impressions	N/A	Black Printed Extra Long Sheets	2 Sheets
Color Level 3 Impressions	N/A	Color Extra Long Sheets	1 Sheets
		Color Printed Extra Long Sheets	1 Sheets
		3x44 Long Impressions	3 Impressions
		Black 3x44 Long Impressions	2 Impressions
		Color 3x44 Long Impressions	1 Impressions

CHECKING THE USAGE SUMMARY

In the Usage Summary tab, you can check:

- Usage Statistics
- Usage Counter Summary



Note

Not all features shown are available in all versions of the application.

Usage Statistics

Feature	Description
2 Sided Percentage	Percentage of pages generated that have been imaged on both sides of a sheet of paper
Average Coverage - Cyan	Percentage of paper that is covered by cyan
Average Coverage - Magenta	Percentage of paper that is covered by magenta
Average Coverage - Yellow	Percentage of paper that is covered by yellow
Average Coverage - Black	Percentage of paper that is covered by black

Usage Counter Summary

Feature	Description
Page Count	Number of pages that have been produced by the printer
Page Count Since Power On	Number of pages produced by the printer since it was last powered on
Total Impressions	Total volume generated by the printer
Large Impressions	Volume generated by the printer that are A3 and larger.
Sheets	Number of pages generated by the printer

VIEWING THE USAGE COUNTER DETAILS

In the Usage Details tab, you can check Usage Counter Details.

Usage Counter Details			
Printed Impressions	1,081 Impressions	Embedded Fax Impressions	0 Impressions
Black Printed Impressions	929 Impressions	Embedded Fax Images Sent	0 Images
Color Printed Impressions	152 Impressions	Embedded Fax Images Received	0 Impressions
Printed Large Sheets	1 Sheets	Embedded Fax 2 Sided Sheets	0 Sheets
Black Printed Large Sheets	0 Sheets	Embedded Fax Large Sheets	0 Sheets
Color Printed Large Sheets	1 Sheets		
Printed 2 Sided Sheets	4 Sheets	Images Sent	3 Images
Black Printed 2 Sided Sheets	4 Sheets	Network Scanning Images Sent	3 Images
Color Printed 2 Sided Sheets	0 Sheets	E-Mail Images Sent	0 Images
		Server Fax Images Sent	0 Images
Copied Impressions	281 Impressions	Internet Fax Images Sent	0 Images
Black Copied Impressions	19 Impressions	Scanned Images Stored	3 Images
Color Copied Impressions	262 Impressions		
Copied Large Sheets	0 Sheets	Server Fax Impressions	N/A
Black Copied Large Sheets	0 Sheets	Server Fax Images Received	N/A
Color Copied Large Sheets	0 Sheets		
Copied 2 Sided Sheets	0 Sheets	Internet Fax Impressions	0 Impressions
Black Copied 2 Sided Sheets	0 Sheets	Internet Fax Images Received	0 Impressions
Color Copied 2 Sided Sheets	0 Sheets		
Extra Long Impressions	6 Impressions		
Black Extra Long Impressions	4 Impressions		
Color Extra Long Impressions	2 Impressions		
Extra Long Sheets	3 Impressions		
Black Extra Long Sheets	2 Sheets		
Black Printed Extra Long Sheets	2 Sheets		
Color Extra Long Sheets	1 Sheets		
Color Printed Extra Long Sheets	1 Sheets		
3x4 Long Impressions	3 Impressions		
Black 3x4 Long Impressions	2 Impressions		
Color 3x4 Long Impressions	1 Impressions		

Note

Not all features shown are available in all versions of the application.

Usage Counter Details

This section contains secondary information about meters.

VIEWING THE POWER DATA

The Power tab displays read-only power usage data. This includes Power Usage Summary in kilowatt hours, the Cumulative Time in State for the current and previous month, and the Timeouts. This data is sent to Xerox Services Manager as part of the data synchronization process.

Xerox WorkCentre 7970 v1

Order Supplies | Printer Web Page
Request Service | Print Test Page
View Meter Reads | Reset Printer

Status | Consumables | Information | Features | Transmitted Meters | Usage Summary | Usage Details | **Power**

Power Usage Summary

Usage This Month (To Date)	34 kWh
Usage Previous Month (Aug-2021)	8 kWh
Lifetime Usage	1000 kWh

Cumulative Time in State

Current Month (HHH:MM:SS)		Previous Month (HHH:MM:SS)	
Mark	000:00:26	Mark	000:04:56
Scan and Mark	000:00:00	Scan and Mark	000:00:00
Scan	000:00:00	Scan	000:00:00
Idle	336:00:09	Idle	743:55:01
Low Power	000:00:00	Low Power	000:00:00
Sleep	000:00:00	Sleep	000:00:00

Timeouts

Idle to LowPower	1500 seconds
LowPower to Sleep	1500 seconds

6. Synchronizing the Data

Overview

The Synchronize area allows you to:

- Synchronize data between the application and Xerox Services Manager
- Change synchronization settings
- Review registration status.

To ensure that printers are maintained at the correct levels of service, you should regularly synchronize information with Xerox Services Manager.

To review or modify synchronization settings:

- Click **Synchronize** from the left navigation pane. The Synchronize screen displays.

Note

If you selected the Skip Printer Export radio button during the configuration process, you can use the Configuration Wizard or the Settings dialog box in the Synchronize area to enable the printer export. Before you enable printer export, confirm with your Xerox Support Representative that the models database is ready for connection to the application.

The Synchronization screen displays:

- Last time the application retrieved information from the networked printers
- When it last communicated meter reads to Xerox Services Manager
- Last successful synchronization
- Next scheduled synchronization

The Synchronization screen has two views:

- Details (the default)
- Data

Using the Details View




The Details View of the Synchronization screen contains the following features:

Feature	Description
Registration	Indicates, with an icon, whether or not registration was successful
Synchronize/Send Meter Reads	Indicates the following: <ul style="list-style-type: none">• Last Synchronize: date, time, and status of the last synchronization attempt• Last Successful Synchronization: date and time• Next Synchronization: current schedule, date, and time
Printer Export Message	Displays if the printer export is currently in progress

The following actions are available on the Synchronize screen:

- Synchronize Now/Stop Synchronize
- Change Settings


To Synchronizing Now or Stop Synchronizing:

1. From the Left Navigation pane, click  to start the synchronization. When the synchronization is in progress, this icon changes to . Under the Synchronize/Send Meter Reads section, a progress bar displays.
2. To stop the synchronization, click .

Note

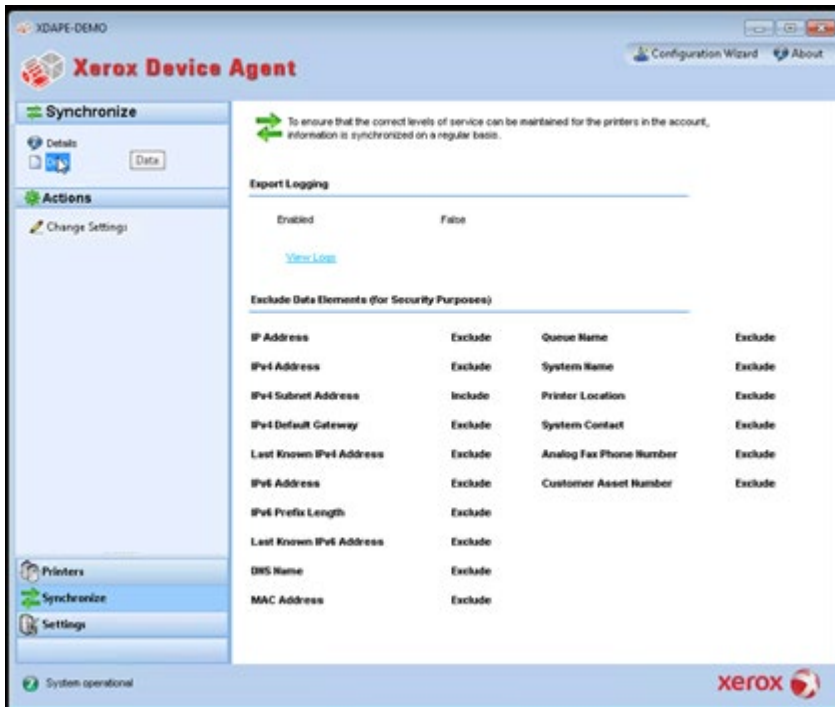
When you change your synchronization, status, or search settings, wait several minutes before you perform a synchronization to give Xerox Services Manager sufficient time to register the changes.

To change the settings:

1. Click . The Synchronization Settings dialog box displays.
2. Modify the information as necessary. See [Configuring the System](#) for further information.

Using the Data View

The Data View enables you to view logs and to exclude certain printer information from being sent to Xerox Service Manager.



To view logs:

1. Click **Data**.

2. Under Export Logging, the Enabled field must be set to True. To change this option, go to the Actions menu and click **Change Settings**.
3. Click **View Logs**.
4. Windows Explorer opens. Select the latest folder (they are listed in YYYYMMDD format) to see the XML file that contains the data exported to Xerox Services Manager.

To exclude printer information from being sent to Xerox Service Manager:

1. Click **Data**. The Data View displays the current sharing elections for the data elements that can be sent to Xerox Service Manager.
2. In the actions menu click **Change Settings**.
3. Select **Exclude** from the drop-down menu for each element you do not want to send to Xerox Service Manager. This change takes place immediately. You can exclude any of the listed elements.
4. Click **OK**.

7. Configuring the Settings

Overview

The Settings screen allows you to view and select a variety of application configuration options for application actions, such as search for printers and obtain printer status, as well as other application functions.

To access the Settings screen:

- Click **Settings** from the left navigation pane.



Working with the Views

The Settings screen contains the following views:

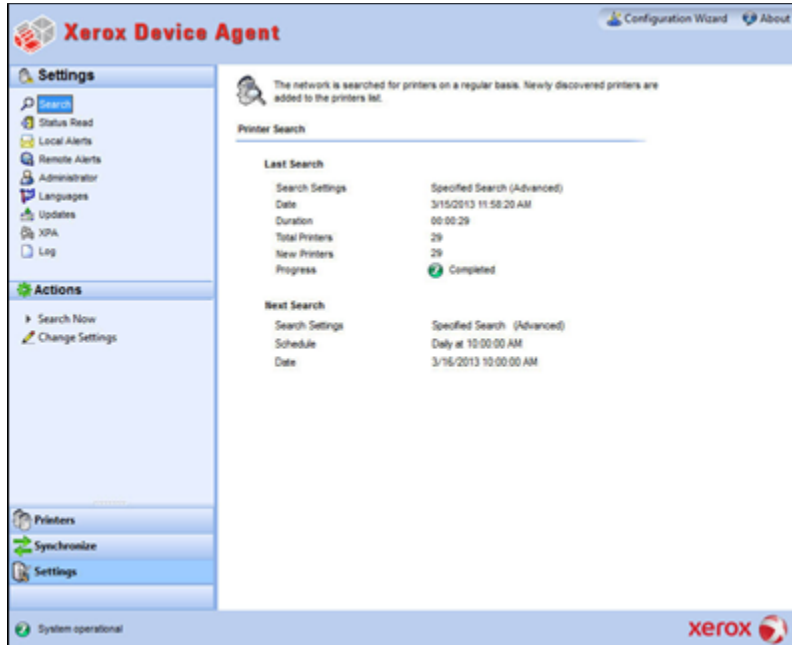
- Search
- Status Read
- Local Alerts
- Remote Alerts
- Administrator
- Languages
- Updates
- Log
- Diagnostics
- CloudFM

USING THE SEARCH VIEW

When you first access the Settings area, the Search view is selected by default.

To access the Search view if another settings page had been selected:




- Click **Search**.





The Printer Search details are displayed in the right pane. While in the Search section, you can click **Actions** > **Change Settings** to perform the following actions:

- View and configure individual IP search, individual DNS name search, subnet mask sweep, frequency of search, and time of search
- View current search settings
- Remove individual settings that are no longer applicable


The Printer Search screen includes the following information:

Feature	Description
Last Search	<p>Indicates the following parameters for the current search:</p> <ul style="list-style-type: none"> • Search Settings: Current settings from Default Search, No Search, or Specified Search • Date: Date of the last search in the date format specified by your operating system • Duration: How long it took to perform the search • Total Printers: How many printers have been found during the search • New Printers Found: Out of all the printers found, how many new ones were found in the most recent search • Progress: Progress indicator when the search is running or shows the search status with one of the following icons: , , or 
Next Search	<p>Indicates the following parameters for the next search:</p> <ul style="list-style-type: none"> • Search Settings: Search setting from Default Search, No Search, or Specified Search • Schedule: Indicates if the search occurs daily or at other intervals at the exact time in the date format specified by your operating system • Date: Next date that a search is scheduled in the date format specified by your operating system


To search now or stop searching:

- From the Left Navigation pane, click  to start the search; when the search is in progress, this icon changes to , allowing you to stop the search.

Note

It can take 10 to 15 seconds to stop the search after you click .

To change the Settings:

1. Click  **Change Settings**. The Search Settings dialog box displays.
2. Modify the information as necessary.

Importing the Printers

Entering individual printer addresses can be very time consuming. You can import a list of printer addresses to scan during the printer search. This applies to both Xerox and non Xerox devices.

To import a list of printer addresses:

1. In the Search Settings dialog box, select Specified Search.
2. Select Search Type > Import.

Note

To download a sample CSV file, click **Export Template**. If you need directions on how to format the CSV file select the instruction link to display a dialog box showing the possible format for the rows in the CSV file.

3. When you are ready to import the CSV file containing the discovery settings, click **Select File**, and then browse to and select the file.
4. Click **OK** to import the settings from the file.

Discovering SNMP V3 Devices

As accounts become more security-conscious, they are enabling SNMP v3. This feature enables Xerox Device Agent to discover these devices so they can be managed. Devices use one of two Authentication modes as well as a set of Keys or Passwords, and it is important to understand what the device settings are before setting up a SNMP v3 Discovery.

For SNMP V3 sweeps, you have the option to manage device discovery remotely through Xerox Services Manager. The discovery method settings are synchronized on both sides during every import and export. The process to run SNMP V3 discovery remotely is documented in the Xerox Services Manager guides.

During a sync, Xerox Device Agent will download the discovery settings from Xerox Services Manager if there is any change in the settings. Any updates in Xerox Device Agent will be synchronized in Xerox Services Manager side during the next sync.

To discover SNMP v3:

1. In the Search Setting dialog box, select **Specified Search**.
2. In the Printer Search section, select the SNMP v3 button on the top.
3. **Search Type > Import** is selected by default. (This is the only supported option for SNMP v3 searches.)

Note

To download a sample CSV file, select **Export Template**. If you need directions on how to format the CSV file, select the instruction link to display a dialog box showing the possible format for the rows in the CSV file or see the directions below.

4. When you are ready to import the CSV file containing the discovery settings, click **Select File**, and then browse to and select the file.
5. Click **OK** to import the settings.

CSV File Format Overview:

The table below explains the fields within the CSV file. **Note:** It's important that the fields be listed in the same order as below.

Field	Description
DNS Name	If using the DNS name to discover the printer then enter the DNS name here.
IP Address	If using the IP Address to discover the printer then enter the IP address here
Start IP Address	When doing a range of IP addresses this is the start address of the range.
End IP Address	When doing a range of IP addresses this is the end address of the range.
Subnet Mask	The subnet mask for the subnet the printer is on and must be filled in.
Comment	An optional comment.
Prefix	The IP v6 prefix for the device.
User Name	This is the SNMP v3 user name and can be found on the SNMP v3 page on the printer. Most Xerox devices use Xadmin for this value.

Field	Description
Context Name	This is the SNMP v3 context name and can be found on the SNMP v3 page on the printer. Note: Not all printers use this, so if it not found on the prints page leave this value blank.
Authentication Mode	This is how to authenticate to the device and will be MD5 or SHA1. If the printer doesn't allow this to be changed it will be displayed on the printers SNMP v3 page.
Authentication Type	This field will be the word "password" or "key". If on the device it asks you to enter an Authentication Password and Privacy Password then put password in this field.
Authentication Key/Password	This is the same information that you entered in the Authentication field on the printer and is case sensitive.
Privacy Key/Password	This is the same information that you entered in the Privacy field on the printer and is case sensitive.

Example of Xerox® device and how to fill in the CSV file

Based on the printer shown in the example above, you would enter the following line into the CSV file:
 ,192.168.0.12,,,255.255.255.0,,,Xadmin,,MD5,Password,Password01,Password02

Notes:

- In this example we are using the IP address of the printer, so a comma is put at the beginning because the first element in the file is the DNS name which is not used in this example.
- You would enter Password01 in the **Authentication Password** field and Password02 in the **Privacy Password** field.



Example of a HP 4555 and how to fill in the CSV file

Based on the printer shown in the example above, you would enter the following line into the CSV file:
,192.168.0.15,,,255.255.255.0,,,HPuser,Jetdirect,MD5,Key,KeyAuth123,KeyPrivacy456

Notes:

- In this example we are using the IP address of the printer so a comma is put at the beginning because the first element in the file is the DNS name which is not used in this example.

Excluding Addresses from a Search

Some customers have specific printer addresses that they do not want to communicate with Xerox Device Agent. This feature offers the option to exclude specific addresses from a search.

To exclude addresses from a search:

1. In the Search Setting dialog box, click **Advanced**. The Advanced Communication Properties screen displays.
2. Click the **Exclusions** tab.
3. Enter the items you wish to exclude, such as:
 - IP addresses
 - Subnets
 - Ranges that you wish to exclude.

The process is the same as when you are adding addresses to the discovery list.

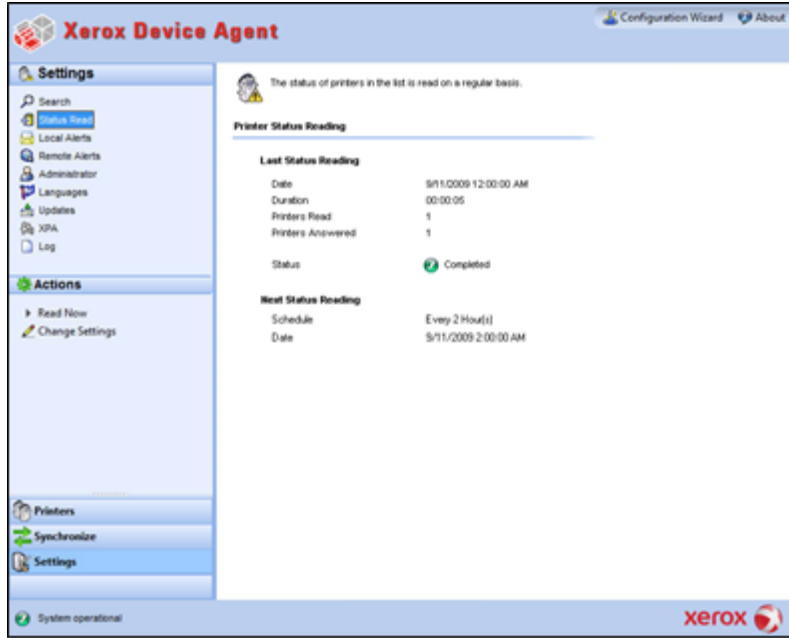
4. Click **OK**.

VIEWING THE STATUS READ

Printers are polled for print counters and supplies levels at configurable scheduled intervals. This information is available on the Status Read view.

To access the Status Read view:

- Click **Status Read**.



The Printer Status Reading screen contains the following features:

Feature	Description
Last Status Reading	<p>Indicates the following parameters for the last status reading:</p> <ul style="list-style-type: none"> • Date: Date of the last reading in the date format of your operating system • Duration: How long it took to perform the reading in hours and minutes • Printers Read: How many printers were read • Printers Answered: How many printers answered • Status: Status of the last read along with icons according to success, warning or error
Next Status Reading	<p>Indicates the following parameters for the next status reading:</p> <ul style="list-style-type: none"> • Schedule: Indicates if the reading occurs daily or at other intervals at the exact time in the date/time format of your operating system • Date: Next date that a reading is scheduled in the date format of your operating system

Identifying SNMP Response Issues


Discovery connection errors could occur because a device is offline, etc. In order to track and resolve issues with discovery that are specific to SNMP access errors, the device status SNMP Access Denied is used. Any devices that are not responding due to SNMP-related issues fall under this category. Knowing that access is denied for SNMP authentication reasons can expedite resolution; possible issues included in the SNMP Access Denied status are:

- Invalid Get Community Name
- SNMPV3 Wrong User Name

- SNMPV3 Invalid Auth Key
- SNMPV3 Invalid Privacy Key
- SNMPV3 Invalid Context Name

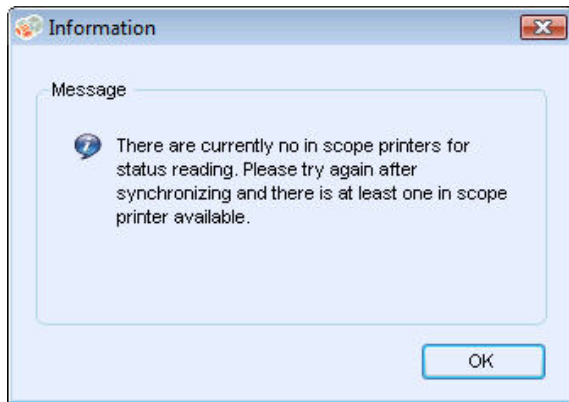
Device managers send this status to Xerox Services Manager during an asset export. When a device with a local alert configured for its group has an SNMP Access Denied Status, then an email alert is also sent to the configured email addresses.

To read now:

- From the Left Navigation pane, click  to start the status reading.

Note

If your version of the application distinguishes between In Scope and Out of Scope devices, this only applies to In Scope Printers.

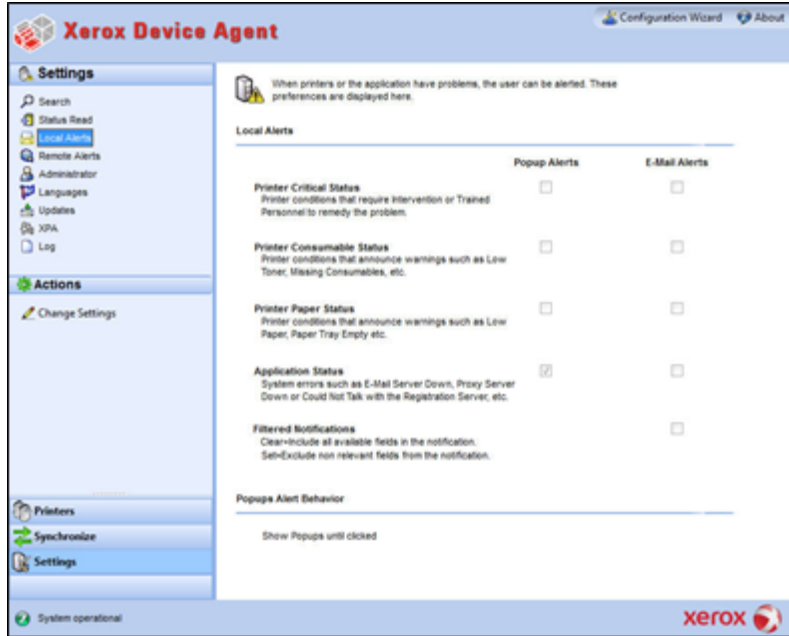


VIEWING THE LOCAL ALERTS

In the Local Alerts view, you can identify which alerts you want to be notified about via pop-ups or E-mail.

To customize popups and E-mail-based local alerts:

1. Click **Local Alerts**.



2. Select or deselect the check boxes, as necessary.

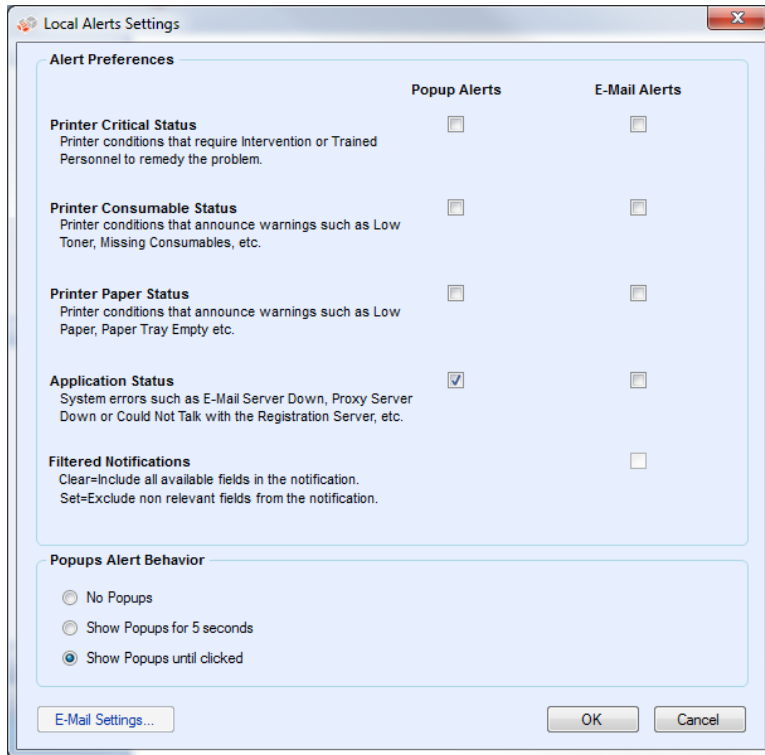
Changing the Behavior

When you originally installed and configured the application, the popup behavior was set by default to Show Popups until clicked. You can override this default setting in the Alerts dialog box in the Local Alerts setting or in the System Tray Context menu.

The popup settings you select apply to all popup alert preferences configured for printer critical status, printer consumable status, and application status. Please be sure to select the appropriate behavior for your business.

To change the behavior of Local Alerts:

3. Click  **Change Settings**. The Local Alerts Settings dialog box opens.



4. Modify the Popups Alert Behavior as necessary.

- Select **No Popups** to prevent any popup alerts from being displayed even if you selected the popup alerts check box in the Preferences section.
- Select **Show Popups for 5 seconds** to close the popup alert window after it is displayed for five seconds. The application does not redisplay the popup alert windows once the initial window has disappeared.
- Select **Show Popups until clicked** to display the popup alert window in the lower right corner of the screen until you manually click the window to close it.

VIEWING THE REMOTE ALERTS

The Remote Alerts view displays all alerts that have been configured in Xerox Services Manager, including the alert name and the date.

To open the Remote Alerts screen:

- Click **Remote Alerts**.



Note

The application only updates the **Changed** field if a modification to a remote alert is made in Xerox Services Manager.

The Remote Alerts screen contains the following information:

Feature	Description
Alert Name	Name of the alert profile created in Xerox Services Manager, often containing alert type description such as system failure, color low toner, or mono low toner
Changed	When the alert profile was updated, in the date format of your operating system
Occurred	When the remote alert condition is met and Xerox Services Manager has been notified of a printer problem in the date format of your operating system

To Synchronize Now or Stop Synchronizing:

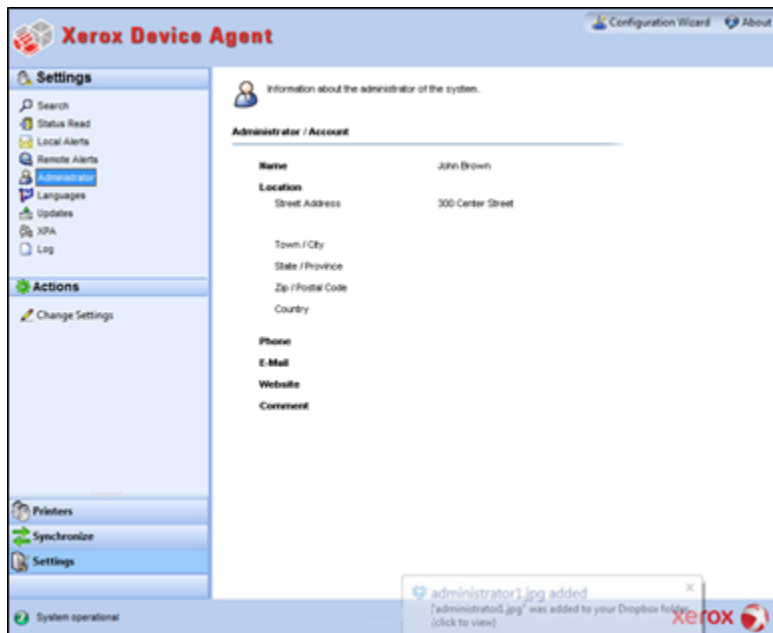
- From the Left Navigation pane, click  to start the synchronizing; when the synchronization is in progress, this icon changes to , allowing you to stop the synchronization.

WORKING WITH ADMINISTRATOR SETTINGS

You can change information about the administrator on the Administrator screen.

To open the Administrator screen:

- Click **Administrator**.



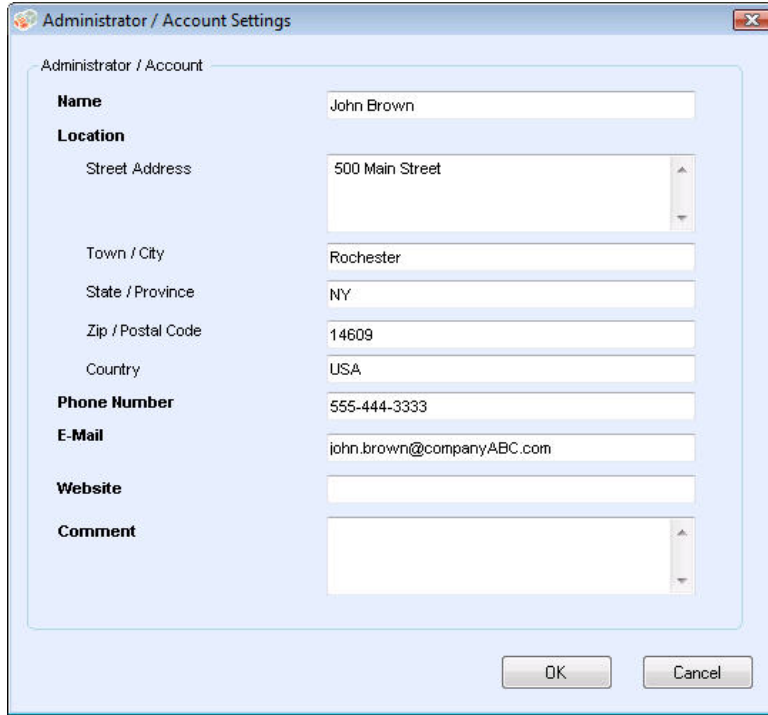
The Administrator screen contains the following information:

Feature	Description
Name	Name of the administrator
Location	Address of the administrator
Phone	Phone number of the administrator
E-mail	E-mail of the administrator
Website	Web site of the administrator

Feature	Description
Comment	Comments posted by the administrator

To change the Settings:

1. Click  **Change Settings**. The Administrator/Account Settings dialog box displays.



The screenshot shows a dialog box titled "Administrator / Account Settings". It contains the following fields and values:

- Name:** John Brown
- Location:**
 - Street Address: 500 Main Street
 - Town / City: Rochester
 - State / Province: NY
 - Zip / Postal Code: 14609
 - Country: USA
- Phone Number:** 555-444-3333
- E-Mail:** john.brown@companyABC.com
- Website:** (empty field)
- Comment:** (empty text area)

At the bottom of the dialog box are "OK" and "Cancel" buttons.

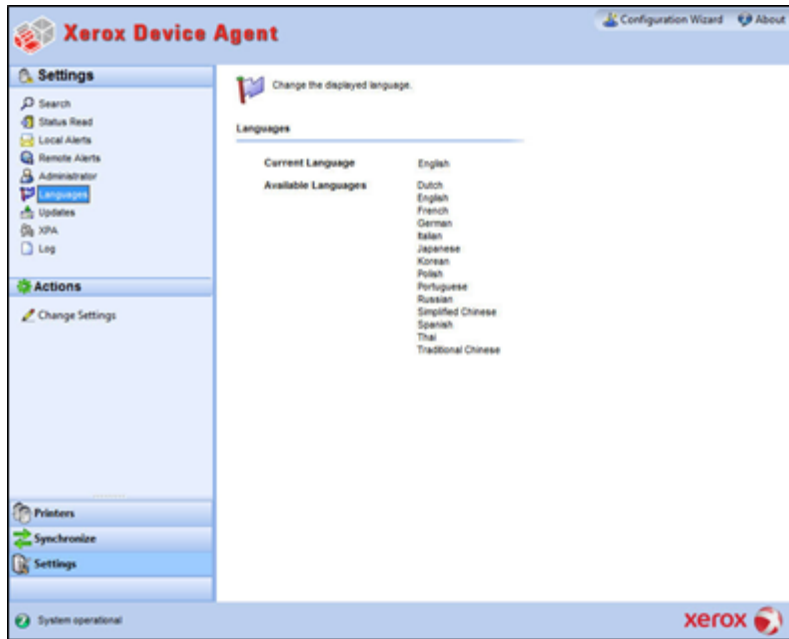
2. Modify the information as necessary. See [Configuring the System](#) for more information.

CHANGING THE LANGUAGE

All the languages that Xerox Device Agent supports are listed on the Languages screen.

To open the Languages screen:

- Click **Languages**.

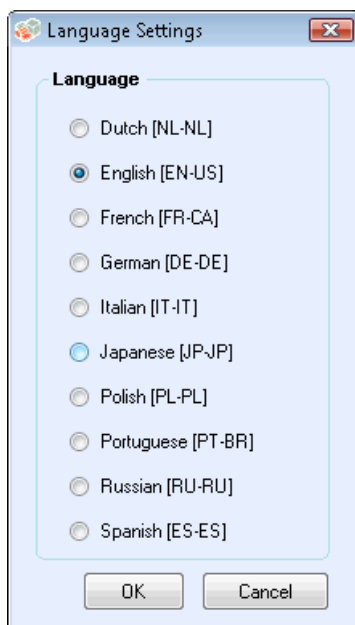


The Languages screen contains the following information:

Feature	Description
Current Language	Current language that the application is running in
Available Languages	Languages you can choose

To change the Settings:

1. Click Change Settings, the Language Settings dialog box opens.



2. Select a new language.

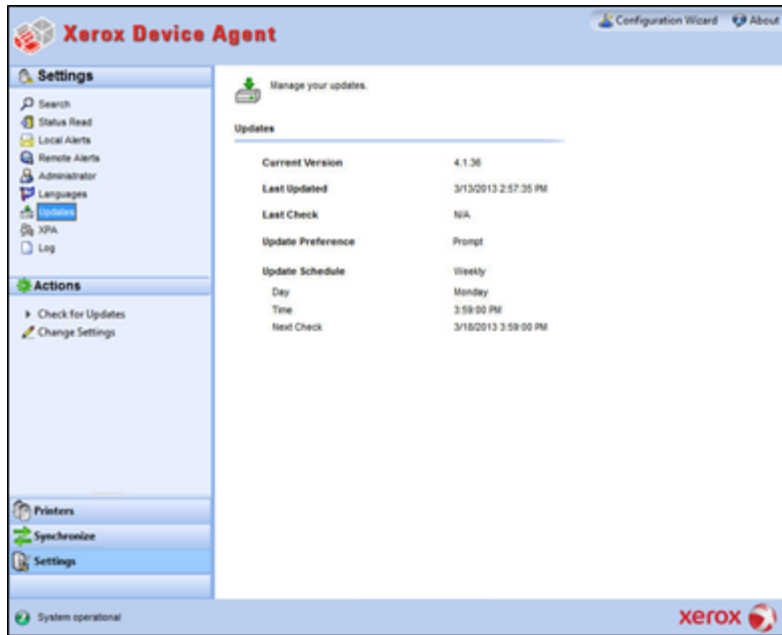
3. Click **OK**. The Language Settings dialog box opens, reminding you that for the language change to take effect, you must restart the application.
4. Click **Yes**. The application displays as the language you selected.

WORKING WITH AUTOMATIC UPDATES

Xerox Device Agent communicates to the auto-upgrade server to verify if there is a newer version of software. By default, the software is set to upgrade automatically. To opt-out of automatic upgrades, you may change the settings in this section after each installation or upgrade.

To view and change the automatic update settings as well as check for updates:

- Click **Updates**.



The Updates screen contains the following information:

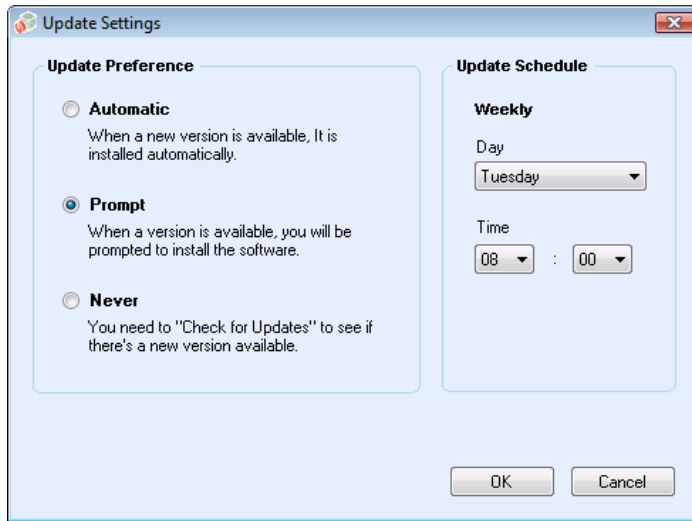
Feature	Description
Current Version	Current application version number
Last Check	Date and time that the application last checked for updates
Next Check	Scheduled date and time for the next update
Update Preference	The three update preferences are: <ul style="list-style-type: none"> • Automatic: When a new version is available, it is installed automatically (default) • Prompt: When a version is available, you are prompted to install the software • Never: Do not check for updates automatically. Manually checking for updates is available.
Update Schedule	Day of the week and time of the day to check for scheduled updates

To check for updates:

- Click **Check for Updates**. The application prompts you with one of the following messages:
 - If an update is available:
 - If you are an administrator, a message informs you that a new version is available for installation. Click **Yes** to install the application now or click **No** to postpone the installation.
 - If you do not have administrative rights, a message informs you that you need administrative rights to perform the installation. Click **OK** to close the dialog box and return to the Updates Setting screen.
- If your system does not have enough memory to run the application, a message informs you that a new version is available for installation, and it also indicates that you need more memory to perform the installation. Click **OK** to close the dialog box and return to the Updates Setting screen.
- If the software is up-to-date, the message informs you that you are running the current version of the application. Click **OK** to close the dialog box and return to the Updates Setting screen.

To change the settings:

1. Click . The Update Settings dialog box displays.



2. Update the Preferences and Schedule, as necessary.


VIEWING THE LOG

The Log view shows the list of events in table format.

To view the Log:

- Click **Log**.

To clear the Log:

1. Click . The Clear Log dialog box displays.
2. Click **Yes** to clear the log or click **No** to cancel the action. The application deletes the log list from the right pane.

USING DIAGNOSTICS

In the Diagnostics view, you can create new diagnostic files.

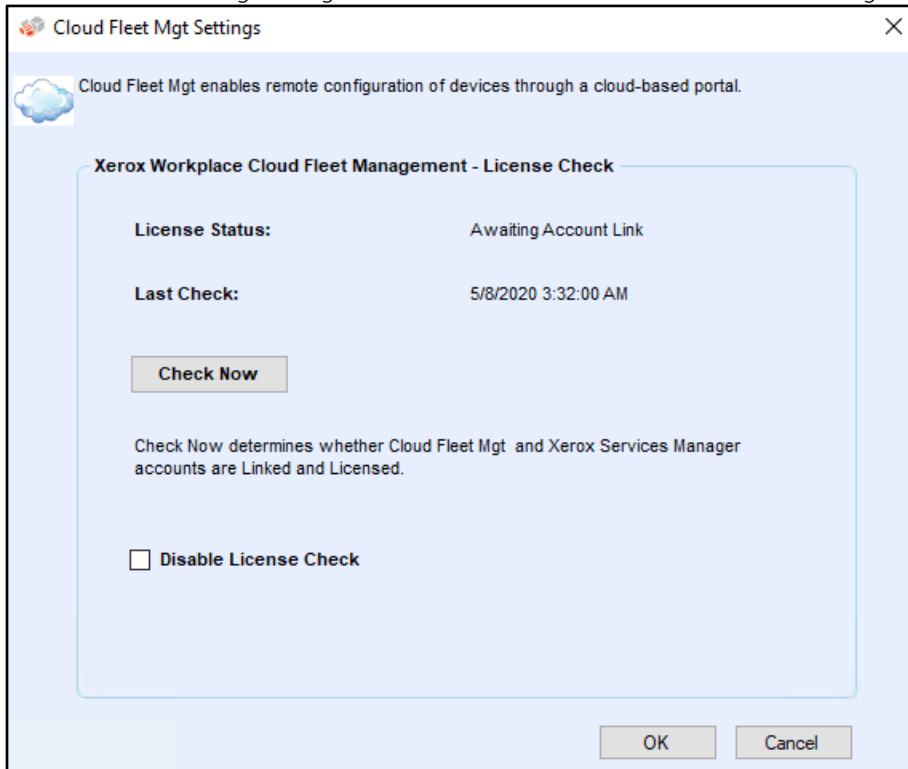
USING CLOUDFM

Important! This does not apply to Xerox Device Agent Lite installs and upgrades.

In the CloudFM view, you can manually check to see if a license has been installed. A user can also disable the service, so that the application no longer checks to see if the license was installed.

Note: Xerox Device Agent will automatically check once a day to see if a license has been installed. If the feature has been licensed, Xerox Device Agent will upgrade to include CloudFM capability.

Once the CloudFM capabilities have been upgraded, CloudFM will be set up to configure devices on the network that are being managed. It can be accessed from the XWC Fleet Management web interface.



8. Troubleshooting

Recovery Services

MONITORING RECOVERY SERVICES

Xerox Support representatives and Administrators who manage the application's operational status can monitor for the following error conditions:

- Service has crashed
- Service has locked up

In addition, you can choose what action to take after an error from the following options:

- Restart the service, or
- Do Nothing (if recovery is disabled)

You can create a diagnostic file of the DB and log files that will be saved to a location where they will not be overwritten. This ensures that even if the Xerox Device Agent is uninstalled or upgraded, enough information is saved to allow Xerox Support to determine the cause of an issue. The diagnostic file contains install logs, event logs and other errors logs from the XDA /Bin directory.

RUNNING RECOVERY SERVICES

You can generate a Recovery File of Database and Log files by running a command line utility in the Xerox Device Agent installation /Bin directory. You must be an Administrator to run this utility. By default, a Recovery File generates in a default location.

1. Open a Command prompt, by right clicking on the cmd prompt icon and selecting Run as Administrator.
2. From the command prompt Cd to the installation /Bin directory, determine the installation directory by right clicking the Xerox Device Agent shortcut on your desktop and look at the target.
3. Run XDALogCollator.exe with no switches to create a new recovery file: XDALogCollator.exe
4. By default, the utility will:
 - generate a Recovery file in the default location, and
 - restart the Xerox Device Agent service (if possible).
5. The utility stores the Recovery File in C:\ProgramFiles(x86)\Xerox\DiagnosticFiles. That location can be overridden in Xerox Device Agent and by using the -l switch. (See below.)
6. XDALogCollator.exe -h will list the helpfile for the utility. It supports the following command line switches:
 - -h list the help file
 - -r restart the Xerox Device Agent service
 - -c create recovery file only, do not upload to Xerox
 - -q prompt the user before sending the file
 - -l <location> define location for the recovery file you are generating

To support running and managing recovery files go to Settings >Diagnostic. This section displays the recovery files and includes a status indicator to show whether they have been uploaded or not. Actions available from here are:

- Create a new recovery file
- See a list of recovery files
- Purge all recovery files

The following files are included in the diagnostic upload:

- Windows Application Event Log
- Discovery Event Log
- Xerox DM (Device Management) Event Log
- Schedule Event Log
- Database Files
- XDA Installer Log

Issues and Responses

This section describes known troubleshooting issues for Xerox Device Agent.

Issue Number	Details
1	Stopping the service from the application Service Control Manager does not clear Xerox Device Agent .exe service from the Windows® Task Manager for approximately 15 seconds because the Windows Task Manager responds by taking XDA.exe CPU usage to '00' while the .exe is still consuming memory.
2	The application does not support fast user switching mode in Windows®, so administrators must configure Windows® to require logging off before another user is able to log back in.
3	When installing the application on a computer that runs Cisco® Security Agent software, the administrator must update the security policy to allow the application processes, Xda.Service.exe and Xda.Shell.exe, to run normally.
4	For all printers, the DNS Name field in the Printer Properties screen is initially blank until the application runs the next import, which populates the field. This issue occurs because the application completes printer search quicker than the DNS resolution.
5	The application skips the Printer Search if you select a date that does not exist for a particular month in the Advanced Communications Properties screen. For example, go to Settings > Search > Settings > Advanced, select Month(s) from the Every drop-down menu, and select 31 from the Date drop-down menu. When configured this way, the application skips the run date for months that do not have 31 days, such as February, but it does run the printer search again for the next month when the date becomes valid, such as March 31.
6	On rare occasions, the application may experience some minor database corruption that requires it to close. If you experience this problem, shut down and restart your computer. Upon startup, the application attempts to repair the database and if the repair is successful, the application operates normally. If the application is still unable to run successfully after you restart, contact your Xerox Support Representative.

Issue Number	Details
7	If you have initiated a single printer search using the Add Printer Wizard, you cannot cancel out of the process if the IP or DNS name corresponds to a valid printer. The only way to remove the printer is to delete it after the search is complete.
8	When the screen saver is active, the application displays the popup alerts in front of the screen saver.
9	When you set the Task bar to auto-hide, the application does not display the popup message next to the bottom edge of the screen.
10	When the IP address of a printer changes, the application assigns that printer a status of No Answer from device, preventing a printer's meter reads from being collected. You cannot correct this status by clicking Refresh or by polling the printer in the Printer Properties page. To collect meter reads, you must perform a printer search to find the new IP address of the printer.
11	<p>Changing the subnet mask on the host computer will not change the default subnet mask in the application without restarting the UI and service. Below is an example of this.</p> <ul style="list-style-type: none"> • The application is installed on a host with a subnet mask of 255.255.255.0. • Change search to display 255.255.255.0 as the default subnet mask for subnet searches. • Host machine's subnet mask address is changed to 255.255.252.0. • The application continues to display 255.255.255.0 as the default subnet mask for subnet searches until the UI and Service are restarted or the host is rebooted.
12	In the Proxy Server screen of the Registration section in the Configuration Wizard, when you select Use Browser Settings (Internet Explorer®), the application does not pre-populate the Exception area with all bypass information from the browser as is expected.
13	The application only includes meter reads in CSV-exports for printers when it has performed a Status Read.
14	In the Configuration Wizard, if you select Default Search, and click Next, the application begins searching for printers. If you decide that you want to switch to the No Search option after you make your selection, the application does not stop the already-running search. Instead, it finds the printers in the local subnet and displays them in the Dashboard view. You have to manually delete the printers from the application by selecting them and using the Delete Printer option.
15	If you are attempting to launch a printer Web page for an IPv6 printer from the Printer Details page using a browser that is configured to use a proxy, your browser proxy bypass list must include the printer IPv6 address or the IPv6 prefix. Without this browser configuration, you are not able to access the printer Web page.
16	Proxy configuration via script and proxy check box is not supported within the application user interface or within the Internet Explorer® (IE) settings. If you are using a script or automatic within the IE settings, specify the proxy within the Advanced Proxy options of the application.

9. Appliance Deployment Appendix

Xerox Device Agent supports the installation and deployment of an Appliance Configuration. Its purpose is to create a deployment to enhance usability and convenience. You may choose to configure your system differently depending on your needs.

Hardware

Most hardware can support a deployment that targets an “always-on” appliance deployment; however, many customers will find mini-pcs to be the most useful. These devices usually contain onboard Wi-Fi, HDMI support, and a small form factor that can mount on the back of other devices.

Hardware of this specification will be sufficient for deployments of ~250 devices. Depending on the exact hardware that you choose, your performance may be better or worse. The main concern for a mini pc in this deployment is overheating. Ensure that your device has suitable airflow.

Recommended:

- Windows 10
- 2GB RAM minimum
- 32GB HD

Windows Convenience Modifications

Microsoft Windows comes with many convenience and security capabilities, not all of which are enabled by default. The following is a list of settings that we recommend for a deployment that is enabled for convenience.

Convenience Settings

These settings are necessary for an “always on” experience. If the machine loses power, it will auto restart, log-in, and start Xerox Device Agent.

1. Modify the BIOS to Power on the hardware when power is connected
2. Create a local Power User who will run Xerox Device Agent.
 - Set this user to Auto-Logon without password entry.
3. Disable UAC via the registry.
 - Navigate to HKEY_LOCAL_MACHINE\SOFTWARE\Microsoft\Windows\CurrentVersion\Policies\System and set EnableLUA to 0.
4. Modify system power saver settings to keep all services, network connections, etc. on (i.e., no power down mode).