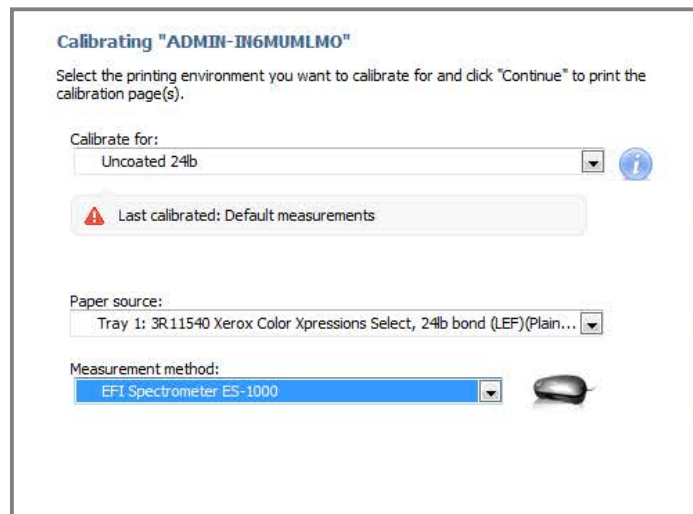


Xerox® Versant® 3100 Press Calibration & Profiling on the Fiery® Print Servers

Calibrating the Print Server

To calibrate using the Full Width Array:

1. If not already loaded in a tray, load the paper that you want to use for the calibration. The paper should be one that you use most often, or a centerline paper. If you changed the stock in the tray, program the new stock by opening the tray in the Stock Library Manager, and then select or create the stock.
2. Before performing a print server calibration, first run the Density Uniformity Adjustment tool from the Tools menu on the print engine. This best practice ensures that the density settings are optimum for the press.
3. If needed, log onto the print server as a System Administrator.
4. From the Job Center tab, click the **Calibrate** icon at the top of the screen, OR select **Calibrate** from the Server drop-down menu.
5. From the *Calibrate for:* drop-down menu, select the **profile** you want to use for this calibration. Several default profiles come with the server, but others can be created.
6. From the *Paper source:* drop-down menu, select the **tray and loaded paper** you want to calibrate on.
7. From the *Measurement method:* drop-down menu, select **Full Width Array**.
8. Click **Continue** to begin the calibration. When complete a message displays: "Measurements are ready to be applied to [paper selected]"
9. Optionally, you can now click **Test Print** to print a Comparison Page with images using both the old and new settings side-by-side. This lets you visually inspect the results before applying them. Collect the test prints and inspect them.
10. Optionally, you can click **View Measurements** to see the data from the calibration.
11. Click **Apply & Close** to apply the calibration results.



Calibrating "ADMIN-IN6MUMLM0"

Select the printing environment you want to calibrate for and click "Continue" to print the calibration page(s).

Calibrate for:
Uncoated 24lb

Last calibrated: Default measurements

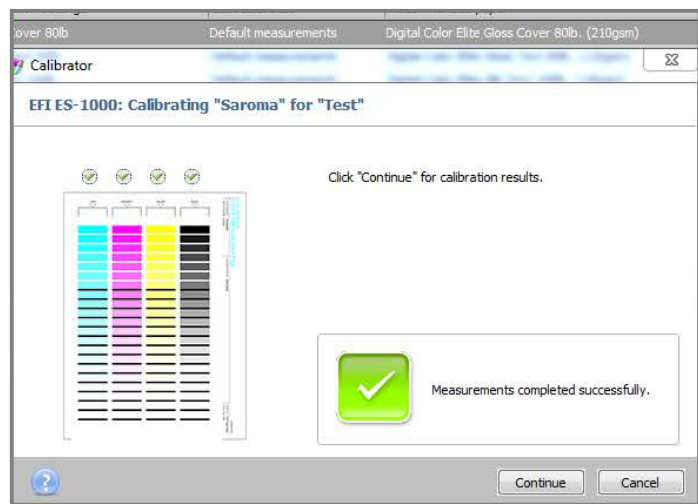
Paper source:
Tray 1: 3R11540 Xerox Color Xpressions Select, 24lb bond (LEF)(Plain...

Measurement method:
EFI Spectrometer ES-1000

Profiling with the Full Width Array

To create a new profile:

1. If not already loaded in a tray, load the paper that you want to profile. If you changed the stock in the tray, program the new stock by opening the tray in the Stock Library Manager. Then select or create the stock you loaded at the press.
2. Before creating a new profile, first run the Density Uniformity Adjustment tool from the Tools menu on the print engine. This best practice ensures that the density settings are optimum for the press.
3. Log onto the print server as System Administrator.
4. Check to make sure that the spectrophotometer is connected to the USB port on the print server.
5. On the Tools window, in the *Calibrate* area, click the **Manage** button.
6. Click **Create New** on the upper-left of the screen.
7. Select the calibration set that closely matches the media being used for this process. For example, if you are profiling for a gloss cover stock, select that option. If you are profiling for an uncoated stock, select that option. You are only making this selection to populate the next screen with media properties. By selecting an option close to the media you are profiling, you will not have to set as many parameters on the next screen.
8. Click **OK**.
9. A unique default name has been entered for your profile, based on the previous media selection. Accept this or change it if you want a different name.
10. Click the **Properties** button.
11. Select the **Media** tab.
12. Select the media properties for the paper you are profiling. The defaults selected are based on the media you selected in Step 7, but you can now change them. The **weight**, **size**, and **coating** of the entries on the Media tab should be set to the weight, size, and coating of the paper you are profiling.
13. Click **OK** to the Properties window.
14. Click **Continue** on the Calibrator window.
15. From the *Paper source* menu, select the **tray** that contains the paper you are using.
16. Click **Continue**.
A target is printed for the profile.
17. A message displays: "Calibration page printed successfully" Click **OK** to this message.
18. Collect the printed target.
19. A window opens to instruct you to put the ES-1000 or ES-2000 in its cradle and hold in the button on the left side of the device. Follow these on-screen instructions.



20. **Scan the target** as shown on the screen. You only have to do this when creating a new profile. When updating a profile, you can simply select the Full Width Array option from the Calibrator screen.
21. Click **Continue** to the “Measurements completed successfully” message.
22. A window opens entitled: “Calibration setting [name of calibration set] has been created”. Select the **Create New Profile** button.
23. The profile creation process proceeds. At the end of a successful process, a window opens titled: “Output profile [name of cal set/profile] has been created”
24. Click **OK** to the message “Congratulations! You have successfully created an output profile.”
25. Close all windows.

To update an existing profile using the Full Width Array:

1. If not already loaded in a tray, load the paper for which you want to update the profile. If you changed the stock in the tray, program the new stock by opening the tray in the Stock Library Manager. Then select or create the stock you loaded at the press.
2. Before updating a profile, first run the Density Uniformity Adjustment tool from the Tools menu on the print engine. This best practice ensures that the density settings are optimum for the press.
3. Log onto the print server as System Administrator.
4. From Job Center, click the **Calibrate** button.
5. From the *Calibrate menu*, select the profile you want to update.
6. For Measurement method, ensure that **Full Width Array** is selected.
7. Click **Continue**.
Targets are printed and measured by the FWA, and updates made to the existing profile.
8. A message displays: “Measurements are ready to be applied to [profile selected]”
9. Optionally, you can now click **Test Print** to print a Comparison Page with images using both the old and new settings side-by-side. This lets you visually inspect the results before applying them.
10. Optionally, you can click **View Measurements** to see the data from the calibration.
11. Click **Apply & Close** to apply the calibration results.
12. Close all windows.

The screenshot shows a window titled "Calibrator" with a sub-header "Create new calibration setting". Below this, it says "Set the properties of the new calibration setting." The form contains the following fields and information:

- Name:** Uncoated 24lb #1
- Recommended Paper:** Color Xpressions Select 24lb. (90gsm)
- Paper reorder number:** (empty field)
- Comments:** (empty text area)
- [Image]** Image Halftone Mode: 200 Dot Rotated
- [Media]** Media Type: Plain, Media Weight: 177-220 gsm, Coating: Gloss
- A **Properties** button is located to the right of the media information.

Performing a Baseline Calibration for the Full Width Array

To perform a Baseline Calibration:

1. If not already loaded in a tray, load the paper that you want to use for the baseline FWA calibration. The paper should be one that you use most often, or a centerline paper. If you changed the stock in the tray, program the new stock by opening the tray in the Stock Library Manager, and then select or create the stock.
2. Before performing a Baseline Calibration, first run the Density Uniformity Adjustment from the Tools menu on the print engine. This best practice ensures that the density settings are optimum for the press.
3. Log onto the print server as a System Administrator.
4. Check to make sure that the spectrophotometer is connected to the USB port on the print server.
5. From the Job Center tab, click the **Calibrate** icon at the top of the screen, OR select **Calibrate** from the **Server** drop-down menu.
6. From the *Calibrate for:* drop-down menu, select **Full Width Array**.
7. From the *Paper source:* drop-down menu, select the **tray and loaded paper** you want to calibrate on.
8. From the *Measurement method:* drop-down menu, select your **EFI ES-1000** or **ES-2000**.
9. Click **Continue** to begin printing the target. A progress bar indicates that the press is warming up. Then the calibration targets are printed and a window opens with instructions.
10. Collect the 4 target sheets that printed and place #1 into the holder so that the long cutout runs along the length of the color strips.
11. Follow the directions to place the ES-1000 or ES-2000 in its cradle and press the button on the left side of the device for several seconds.
12. Place the ES-1000 or ES-2000 in the white space above the 1A strip, and scan row 1A. When the scan is successful, a green check mark displays above the row on the display.
13. Continue scanning all strips on the first target sheet in order – 1A, 1B, 1C, etc.
14. Scan the other strips on sheets #2, 3, and 4.
15. After the last strip is scanned, a message displays “Measurements completed successfully”. Click **Continue** to this message.
16. A message displays “Full Width Array is calibrated.” Click **Close** to this message.

