

Xerox VersaLink Firmware Installation Instructions

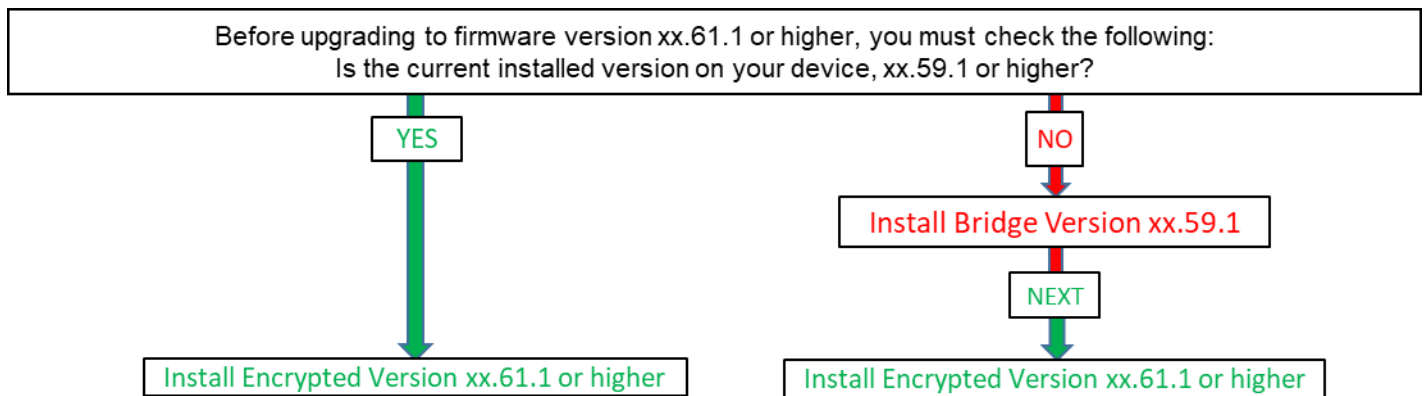
Overview

The purpose of this document is to define the procedures for downloading device firmware to the Xerox® VersaLink® Family of products. This document contains procedures for installing firmware, via the device's Embedded Web Server, via a Windows Firmware Download Utility version 5.3.7.2ww-20221031-0 and via the Mac Installer for WorkCentre® 6515 & Phaser® 6510.

FWDL Utility version 5.3.7.2 is required when using the Windows installer method to upgrade to firmware versions xx.55.21 and higher.

Please Read First

Starting with firmware version xx.61.1 the actual firmware file is encrypted. An encrypted file is signified by having '_E' at the end of the filename. This was done to provide increased security for the VersaLink software.



Before upgrading to the new firmware 61.1 and higher, **you must** be sure the device has a version that can read the encrypted files. If you attempt to install the encrypted file on a version older than the bridge release, it will fail and you will need to power the device off and back on to recover.

B400/405, C400/405, B600-B615 & C500-615 Upgrade paths:

- A. At a release prior to xx.54.21
 1. Install Bridge version xx.59.1
 2. Install Encrypted version xx.61.1 (or higher)
- B. At release xx.54.21 - xx.59.1
 1. Install Encrypted version xx.61.1 (or higher)

C70xx and C8000/9000 Upgrade path:

1. Install Bridge version xx.59.1
2. Install Encrypted version xx.61.1 (or higher)

C8000W Upgrade path:

1. Install Encrypted version 72.64.71 (or higher)

B70xx Upgrade path:

1. Install Bridge version 58.59.11
2. Install Encrypted version 58.61.1 (or higher)

WorkCentre 6515, Phaser 6510 Upgrade path:

1. Install Bridge version xx.59.11
2. Install Encrypted version xx.61.11 (or higher)

Downgrade: It is not necessary to install the bridge version to downgrade to an older version.

Clone File Change

In addition to the encrypted firmware file, Clone files have increased security and data validation. Clone files created prior to firmware release xx.61.1 cannot be applied to this install or higher. A new clone file will need to be created for future use. Clone files created with firmware version xx.61.1 or newer, cannot be applied to devices running older versions of firmware.

Supported Products:

Phaser 6510, WorkCentre 6515 and VersaLink: C400, C405, B400, B405, C7000, C7020/C7025/C7030, C500/C600, C505/C605, B600/B610, B605/B615, B7025/B7030/B7035, C8000/9000, C8000W.

Methods Supported:

- Network (Ethernet) – Windows Firmware Download Utility or Embedded Web Server
 - To obtain the IP Address of the device, print a Configuration Report.
 1. At the printer control panel, press the **Home** button.
 2. Touch Device > About > **Information Pages**.
 3. Touch **Configuration Report**.
 4. To return to the Home screen, press the **Home** button.
- USB (Type-A to Type-B cable) – Windows Firmware Download Utility only
 - The USB Type-B port is on the back of the printer.

Prerequisites to Installing Firmware

- ✓ Administrative Rights to the workstation are required to run the Windows Firmware Download Utility.
- ✓ Before you download and install new software, determine the current software version installed on your printer.

Procedure to determine the firmware version from the Embedded Web Server:

- A. In the Embedded Web Server, click **System**.
- B. Click **Software Update**.
- C. In the Software Update area, view the Current Version.

Procedure to determine the firmware version at the printer control panel:

- A. At the printer control panel, press the **Home** button.
- B. Touch **Device > Software Update**.
- C. For Current Version, view the version number.

- ✓ Ensure the device is enabled to allow for Software Updates.

Procedure for Enabling Software Updates

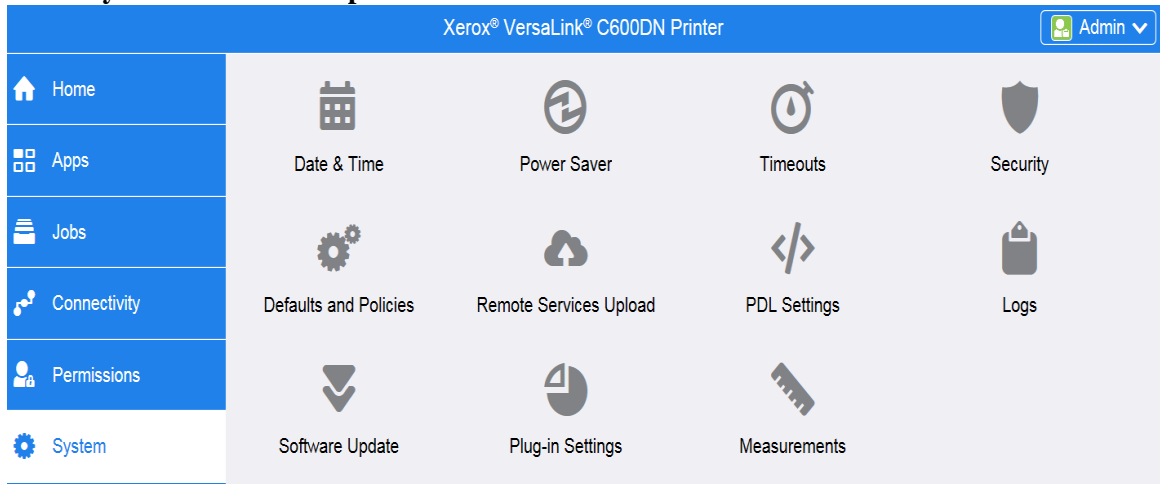
- A. On a computer open a web browser and enter the Device's IP Address. Example: http://<IP Address>
- B. On the device's web page (Xerox Embedded Web Server) Login as a system administrator.
- C. Select **Log In**.
- D. Enter user name and password
- E. Click [**Log In**].

Note: The default user name is admin and default password is 1111.

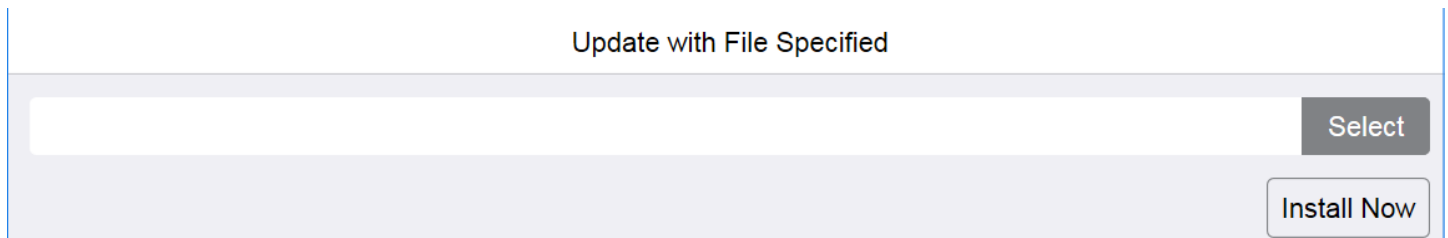
- F. Once logged in, select Home > System > Software Update > [**Enable**].
- G. Select [**Restart Now**] to reboot the device.

Procedure for using Device's Embedded Web Server (VersaLink models only)

1. Download the *.bin firmware file and put it in a directory that can be browsed to.
2. On a computer open a web browser and enter the Device's IP Address. Example: http://<IP Address>
3. On the device's web page (Xerox Embedded Web Server) Login as a system administrator.
4. Select **[Log In]**. Enter the admin user name and password. Click **[Log In]**.
5. Select **System > Software Update**.




6. Browse for the firmware file (*.bin) by clicking **Select**.
7. Navigate to the location where you downloaded the file, then select the .bin file.
8. Select **Install Now**.

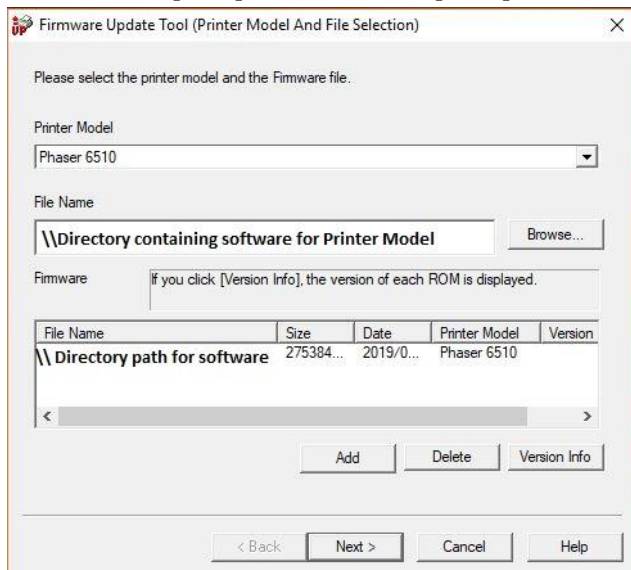


Notes:

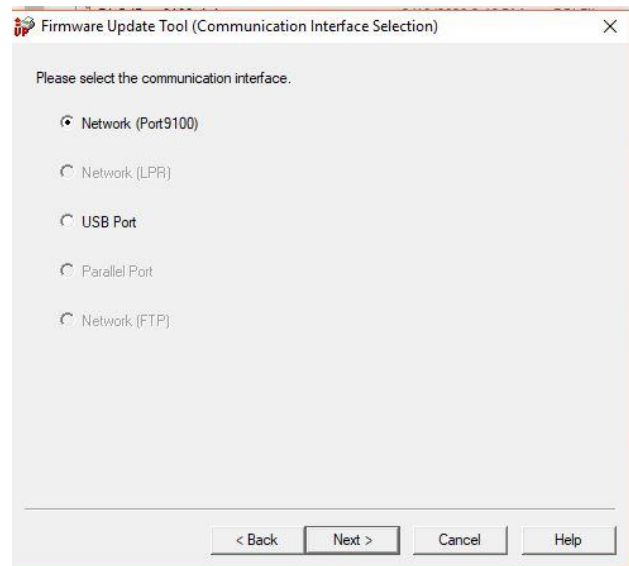
- Software installation begins several minutes after you submit the software to the printer.
- When installation begins, the Embedded Web Server is disabled.
- When the installation completes, the printer restarts and prints a Software Upgrade Report.

Procedure for the Windows Firmware Upgrade Utility (WorkCentre, Phaser, Versalink)

1. Download and extract the **fwdl5.3.7.2ww-20221031-0.zip** (Windows Firmware Download Utility).
2. Download the ***.bin** firmware file and put it in the same location as the Windows Firmware Download Utility.
3. Open “**fwdl5.3.7.2ww-20221031-0**” directory and double click the **FWDLMgr.exe** file. 
4. Read the End User License Agreement and select **[Agree]**.
5. From the Printer Model dropdown, select your printer (example Phaser 6510).
6. Select **[Browse]**, then navigate to the location of the Firmware “.bin” file.
7. Select the “.bin” file, then select **[Open]**.
8. Select **[Add]** and then select **[Next]**.



To



perform an upgrade via the Network

1. Select **[Network (Port9100)]**, then select **[Next]**.
2. Enter the IP address into the IPAddress Input field.
3. Select **[Next]**. This will start the firmware update.

A status dialog appears within the tool tracking the progress of the update. The printer control panel also shows the firmware update status. You will see a message similar to “An authorized user is making changes to this device, Please wait...”

Important: Do not close the window or interrupt the printer while it upgrades.

4. Once the upgrade is complete, select **[Finish]** within the tool.
5. When Prompted “Would you like to exit?” select **[Yes]**.

To perform an upgrade using a USB cable

1. Select the **[USB Port]**, then click **[Next]**.

A status dialog appears within the tool tracking the progress of the update. The printer control panel also shows the firmware update status. You will see a message similar to “An authorized user is making changes to this device, Please wait...”

Important: Do not close the window or interrupt the printer while it upgrades.

2. Once the upgrade is complete, select **[Finish]** within the tool.
3. When Prompted “Would you like to exit?” select **[Yes]**.

The printer reboots when the upgrade is completed, and a Software Upgrade Report prints.

WC 6515/Phaser 6510 Firmware Upgrade Instructions for Mac

Overview

The purpose of this section is to define the procedures for installing device firmware to the Xerox WorkCentre 6515 and/or the Phaser 6510 using the Mac Operating Systems.

Methods Supported:

- Network (Ethernet) –Mac OS supported
 - To obtain the IP Address of the device, print a Configuration Report or a Startup Page.

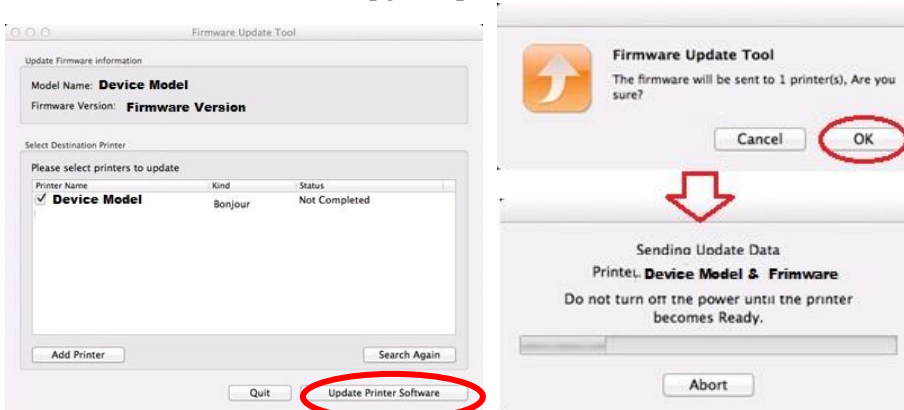
Procedure to use the Mac utility

Important: Must use the designated tool for the desired product. Tools cannot be swapped.

1. Download the <Product Model>_FW.dmg (Mac OSX Firmware Download Utility).
2. Double-click the <Product Model>_FW.dmg file to mount the disk to the computer.
 - a. If the disk image does not automatically open, select the Xerox Firmware Update Tool disk.
3. Double-click on the Firmware Update Tool icon.
4. Select [Add a Printer]
 - a. Enter a valid IP address for a device.
 - b. Select [OK].
 - c. Continue adding printers until all the desired devices are listed.

Note: Printer(s) may appear due to an automatic search performed by the tool.

5. Check each printer that requires an upgraded.
6. Select [Update Printer Software] button.
7. Select [OK] to start the upgrade process.



8. Once the upgrade is complete, select [Finish] within the tool.

The printer reboots when the upgrade is completed and a Software Upgrade Report prints.