

# Xerox® VersaLink® C8000W Color Printer Essential Guide to Successful Printing

© 2021 Xerox Corporation. All rights reserved. Xerox®, Xerox and Design®, VersaLink®, SMARTsend®, Scan to PC Desktop®, MeterAssistant®, SuppliesAssistant®, Xerox Secure Access Unified ID System®, Xerox Extensible Interface Platform®, Global Print Driver®, and Mobile Express Driver® are trademarks of Xerox Corporation in the United States and/or other countries.

Adobe®, Adobe PDF logo, Adobe® Reader®, Adobe® Type Manager®, ATM™, Flash®, Macromedia®, Photoshop®, PostScript®, Acrobat®, Illustrator®, and InDesign® are trademarks or registered trademarks of Adobe Systems, Inc.

Apple®, Bonjour®, EtherTalk™, TrueType®, iPad®, iPhone®, iPod®, iPod touch®, AirPrint® and the AirPrint Logo®, Mac®, OS X®, macOS®, and Macintosh® are trademarks or registered trademarks of Apple Inc. in the U.S. and other countries.

Google Cloud Print™ web printing service, Gmail™ webmail service, and Android™ mobile technology platform are trademarks of Google, Inc.

HP-GL®, HP-UX®, and PCL® are registered trademarks of Hewlett-Packard Corporation in the United States and/or other countries.

IBM® and AIX® are registered trademarks of International Business Machines Corporation in the United States and/or other countries.

McAfee®, ePolicy Orchestrator®, and McAfee ePO™ are trademarks or registered trademarks of McAfee, Inc. in the United States and other countries.

Microsoft®, Windows Vista®, Windows®, Windows Server®, OneDrive®, and PowerPoint® are registered trademarks of Microsoft Corporation in the United States and other countries.

Mopria is a trademark of the Mopria Alliance.

PANTONE® and other Pantone, Inc. trademarks are the property of Pantone, Inc.

UNIX® is a trademark in the United States and other countries, licensed exclusively through X/ Open Company Limited.

Linux® is a registered trademark of Linus Torvalds.

Wi-Fi CERTIFIED Wi-Fi Direct® is a trademark of the Wi-Fi Alliance.

# Table of Contents

1 General Overview .....	5
Purpose of this Essential Guide.....	6
Principles of Printing in White plus CMY .....	7
Driver and Firmware Updates.....	7
Methods of Printing .....	7
Color Media Options .....	9
General Design Considerations.....	11
General Printing Tips.....	11
Guidelines for Printing on Clear Media .....	11
Setting Up a Document to Print in White plus CMY on Color Media.....	12
Image Quality Adjustments .....	13
White Density Calibration .....	13
Transfer Voltage .....	13
Color Fringing Removal .....	14
2 Printing with Microsoft Applications.....	15
Printing RGB Composite Files with Microsoft Applications .....	16
Reducing the Visibility of Margins in Microsoft® Word Documents .....	16
Reducing the Visibility of Margins in Microsoft® PowerPoint® .....	16
Reducing the Visibility of Margins in Microsoft® Publisher .....	18
White Star on Blue Paper with an RGB File .....	20
Green Star on White Paper with an RGB File.....	21
Green and Yellow Star on Blue Paper with an RGB File.....	22
White and CMY Toners on Clear Media .....	23
3 Printing with Adobe® Applications.....	25
Guidelines for Printing with Adobe Applications .....	26
White Only on Blue Paper with a CMYK File.....	28
Green Box on White Paper with a CMYK File .....	30
Green and Yellow Box on Blue Paper with a CMYK File .....	32
Green and Yellow Box on Blue Paper with an RGB File .....	34
White and CMY Toners on Clear Media Using RGB Files .....	36
General Tips for Using Adobe Design Products .....	38
A Xerox Reference Media.....	39
No-Toner Values for Xerox Reference Media .....	40
B Automatic Background Feature .....	43

## Table of Contents

Known Issues with the Automatic Background Feature.....	44
---	----

# General Overview

This chapter contains:

- Purpose of this Essential Guide..... 6
- Principles of Printing in White plus CMY ..... 7
- General Design Considerations..... 11
- Image Quality Adjustments ..... 13

## Purpose of this Essential Guide

The Xerox® VersaLink® C8000W Color Printer is not a traditional CMYK printer and uses white toner in place of black. It is important to read this document to learn how to design successfully with this printer to achieve your required output.

For more information on how to best use your Xerox® VersaLink® C8000W Color Printer, visit [www.xerox.com/versalinkwhite](http://www.xerox.com/versalinkwhite).



**Note:** The guidelines in this document are for A4 and Letter media. Adjustments are required for other media sizes.

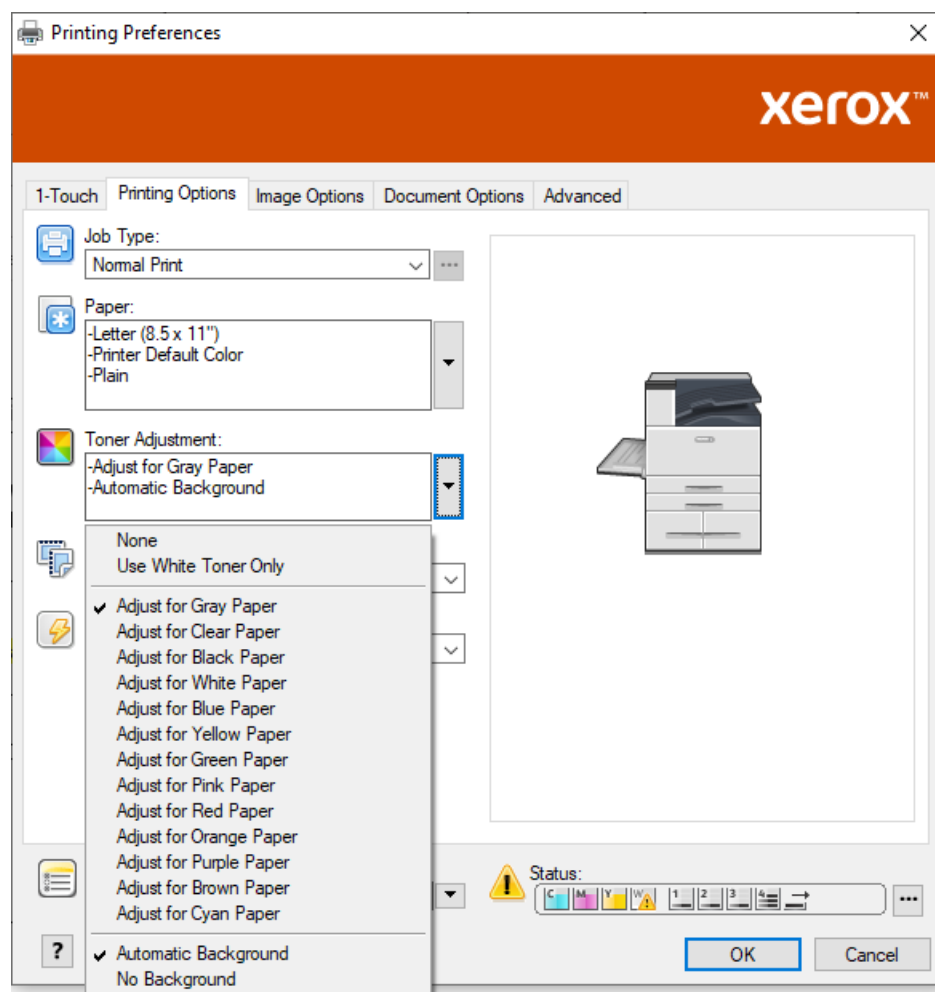
# Principles of Printing in White plus CMY

## Driver and Firmware Updates

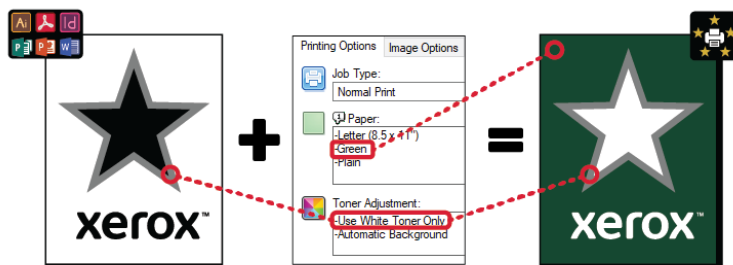
Xerox is dedicated to providing you with the best possible performance and reliability. To stay current, download and install updates to the device firmware and client print drivers from [www.xerox.com/office/VLC8000Wsupport](http://www.xerox.com/office/VLC8000Wsupport).

## Methods of Printing

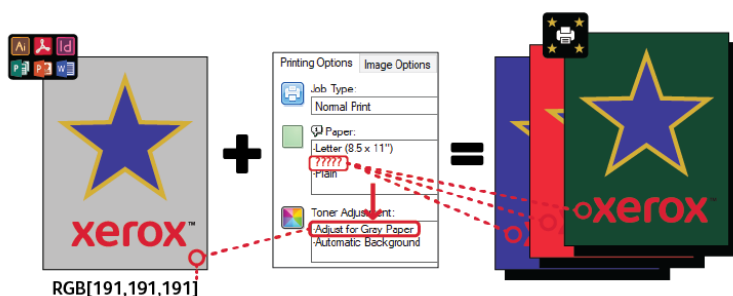
You can select from three different methods of printing on your printer using the **Toner Adjustment** options defined in the PostScript print driver as shown.



- **None:** When you select this option, the printer uses the color tables provided in the device with no adjustment for media color or white toner. The printer replaces black toner areas with white toner.
- **Use White Toner Only:** When you select this option, the printer prints white toner only, in reverse grayscale. The printer replaces black areas of your document with white toner. White areas of your document print with no toner, as shown in the following image.

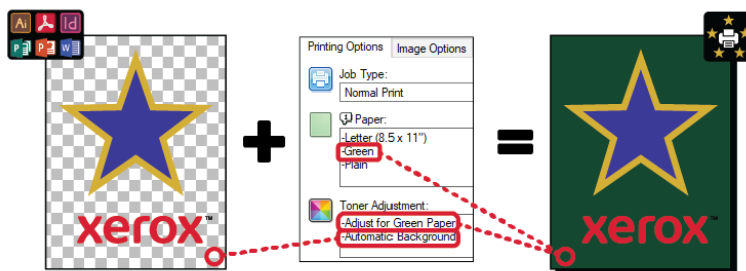


- **Adjust for ... Paper**, where ... refers to the paper color: These options use color tables designed for the Xerox recommended media in these colors. Colors are produced using a blend of white and CMY on top of a base layer of white toner. **Adjust for Gray Paper** is the default option and produces acceptable output on most media types. The following image shows an example of the output when **Adjust for Gray Paper** is selected.



The Background Fill feature defines how to treat the background where there are no design elements. You can select from two options:

- **Automatic Background:** This option creates a no-toner value background automatically that corresponds to the paper color that you selected. Where there are no design elements and a transparent background, the paper is unmarked. This option is selected by default.

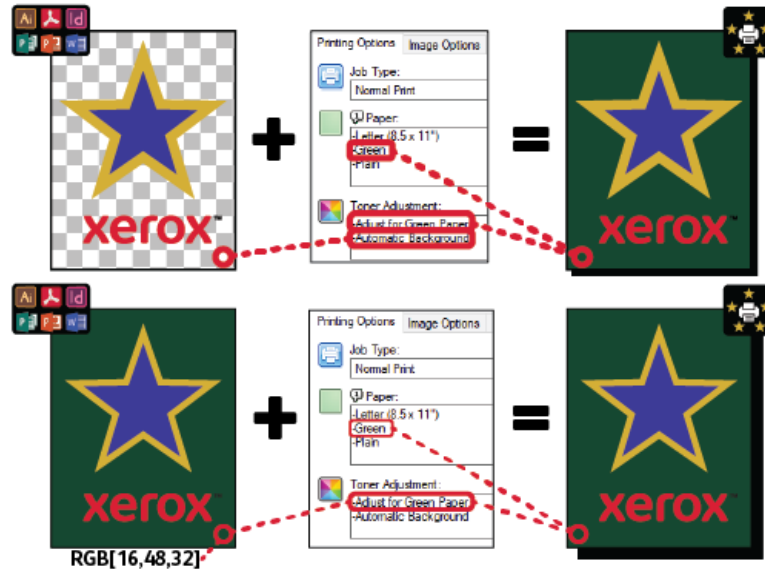


 **Note:** For more details about the Automatic Background feature, refer to [Known Issues with the Automatic Background Feature](#)

- **No Background Fill:** This option disables the Automatic Background feature, allowing advanced users more freedom of design.

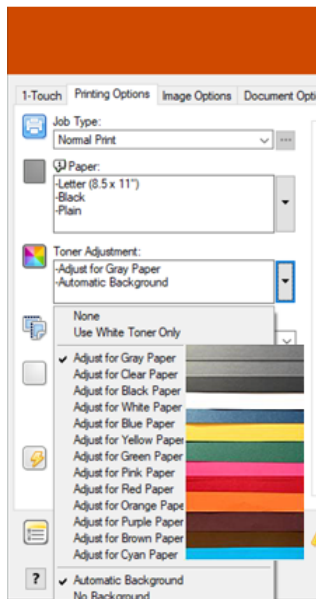
To have more precise control of the design, you can add a no-toner value background manually, as shown in the following example.






## Color Media Options

The Xerox® VersaLink® C8000W Color Printer has internal color tables that, when used with the PostScript print driver, allow for printing in vivid color on different color papers. The following image shows samples of the paper colors, with their associated Toner Adjustment settings in the print driver.




The following table shows the list of paper colors that these color tables were designed for. For best results, use this color paper or a similar color. For specific colorimetric values of the reference paper colors, refer to [No-Toner Values for Xerox Reference Media](#). If you are unsure of the paper color that you plan to use, it is recommended that you select **Adjust for Gray Paper**, and use the corresponding no-toner values. If you try to print on a paper color that does not match closely the recommended color, to produce the required output, you can try different color table options. The table lists a CMYK and RGB value for each color table. These values are the no-toner point for each color table. Where any vector image is assigned that value in your design, no toner is applied.

 **Note:** To avoid discontinuities in the image where toner is not applied between pixels, bitmap objects, such as photos, do not have any associated no-toner values.

Vector objects are made up of points, lines, and curves that are based on mathematical equations. If vector objects contain areas that correspond to the no-toner values for the color table for the media you are using, there can be areas that do not have toner added to the paper.

Raster objects, such as .jpeg, .png, or .tiff files, are composed of pixels. All parts of these objects are covered with toner, so if areas have a no-toner value, there are no discontinuities in the image.

 **Note:** The no-toner values in the table can change with each new software release. Ensure that you are using the latest table for your software release, which you can find at [www.xerox.com/office/VLC8000Wsupport](http://www.xerox.com/office/VLC8000Wsupport)

Toner Adjustment Setting	No-Toner Values	
	RGB (0–255)	CMYK (%)
Adjust for Black Paper	64, 64, 64	0, 0, 0, 100
Adjust for White Paper	255, 255, 255	0, 0, 0, 0
Adjust for Blue Paper	16, 32, 64	70, 50, 5, 70
Adjust for Yellow Paper	255, 255, 128	0, 0, 50, 0
Adjust for Green Paper	16, 48, 32	85, 50, 70, 50
Adjust for Pink Paper	255, 64, 255	0, 50, 0, 0
Adjust for Gray Paper	191, 191, 191	11, 11, 11, 11
Adjust for Red Paper	255, 32, 48*	0, 100, 85, 20*
Adjust for Orange Paper	255, 160, 96	0, 35, 85, 0
Adjust for Purple Paper	79, 63, 79	85, 85, 70, 5
Adjust for Brown Paper	80, 64, 64	50, 50, 50, 35
Adjust for Cyan Paper	86, 255, 255	85, 20, 0, 0
Adjust for Clear Paper**	16, 16, 0	100, 100, 100, 100

\* Use this value for software versions for this printer later than 72.64.01. For software version 72.64.01, use RGB [240,80,112] or CMYK [10,85,50,10].

\*\* This feature is available with firmware version 72.67.91 or later, and print driver version Windows 5.860.1 and Mac 5.10.0, or later only. To download the latest software versions, visit [www.xerox.com/office/VLC8000Wsupport](http://www.xerox.com/office/VLC8000Wsupport). For information about printing on clear media with earlier software versions, refer to [Guidelines for Printing on Clear Media](#).

For more details about media colors and no-toner values, refer to [No-Toner Values for Xerox Reference Media](#).

# General Design Considerations

## General Printing Tips

- Ensure that the output document size matches the paper size that you are printing on. Any space on the output document that is not covered in the design can print as white margin space, which uses a significant amount of white toner.
- When you load media into the trays, ensure that you enter the correct size, color, and weight. This makes it easier to select media in the print driver.
- In the PostScript print driver, you can select the paper that is loaded in the device. In Acrobat®, the advanced sizing option in the PostScript print driver allows you to adjust the size of the output paper. If you choose this option, ensure that you change the document size in the original file.
- If the output paper size on the printer does not match the size in the application, adjust the paper size on the printer.
- If possible, use RGB for better overall color reproduction.
- You can assign no-toner areas to vector objects only. Raster objects do not have areas without toner.
- Do not use spot or Pantone colors. Use the RGB or CMYK equivalents.
- Design with the expectation of some color shift. White toner is not the same as using white paper.

## Guidelines for Printing on Clear Media

- Firmware version 72.67.91 and print driver version Windows 5.860.1 and Mac 5.10.0, or later, provide direct support for printing on clear media using the **Adjust for Clear Paper** option. With these versions, the steps are similar to those for opaque and colored media. There are specific colors to use in your design to designate where no toner is placed in the print, which allows for full transparency. Any part of your design where an object is placed that does not use those specific colors prints in white and CMY, which produces a close rendering of the specified colors and provides opacity to the object. When you create your designs, consider different lighting conditions, for example, if the media is to be placed on a solid surface or a brightly backlit window. Due to the ink limits of the printer, some dark regions that require large amounts of CMY print with less white toner under the image. The resulting image is more transparent, and the perceived color can change in different lighting conditions. For the no-toner values to use for clear media, refer to the table in [Color Media Options](#).
- To print on clear media using an earlier software version, use the procedure for printing on gray media and follow these guidelines.
  - It is recommended that you print on gray paper first to check how your design output appears.
  - To obtain the best results, in the print driver, for **Toner Adjustments**, select **Adjust for Gray Paper**.
  - When you are designing your document, try setting the background layer to match the final location of the output. This option helps you to obtain the most vivid output for your object. Ensure that you set the background to gray again before you print your document.

For information on printing on gray media, refer to the *Xerox® VersaLink® C8000W Color Printer User Guide* available from [www.xerox.com/office/VLC8000Wdocs](http://www.xerox.com/office/VLC8000Wdocs).

- When you load clear polyester film into the paper trays, for the best fusing performance, in the print driver, select **Heavyweight Glossy Cardstock**. This selection provides the highest level of heat at the slowest process speed, which allows for best toner adhesion to clear media.
- Be aware of which side of the media you want to print on.
- For more information on clear media, refer to the *Xerox® VersaLink® C8000W Color Printer Customer Expectations and Installation Guide* provided by your Xerox representative.

## Setting Up a Document to Print in White plus CMY on Color Media

If you want to use the paper as your background, ensure that the **Automatic Background** setting is enabled, or add a no-toner value background manually. To add a no-toner value background manually, set the background color to match the no-toner value for that paper color. When you select a paper color, set the background of the design to match the no-toner value for the paper color that you are using. You can create background no-toner areas in the design and lock these areas to prevent inadvertent editing or selection.



**Note:** Paper colors can vary, and the no-toner values provided are for the Xerox recommended paper. If your paper is not the Xerox recommended paper, still use the Xerox no-toner color values, so that no toner is applied to the background area.

When you design your document, if you want to blend colors from colored areas to no-toner areas, artifacts can appear in the transition from the toner areas to the no-toner areas.

# Image Quality Adjustments

## White Density Calibration

You can adjust the color density to either decrease or increase the amount of toner on your prints. Increasing the density can result in brighter colors, particularly white. If you notice that your white prints start to look gray, run the color density adjustment routine. To access this routine, log in to the printer control panel as an administrator.

Use color calibration to maintain consistent colors. You can adjust the color density, gray balance, or both. For the best results, adjust the color density, then adjust the gray balance. Because the printer does not have a black toner cartridge, a pure neutral black cannot be printed. Only composite black can be printed. For this reason, the gray balance adjustment is not as useful as the white color calibration adjustment. For example, when your white prints look grayer than required, use the white color calibration to increase your white toner density. For instructions on using the gray balance calibration routine, refer to the *Xerox® VersaLink® C8000W Color Printer User Guide* at [www.xerox.com/office/VLC8000Wdocs](http://www.xerox.com/office/VLC8000Wdocs).

At the start of each color calibration procedure, three pages are printed:

- An instruction sheet that explains the calibration and evaluation procedures that are used for both color density calibration pages and the gray balance calibration pages.
- An initial Color Reference Page that has color density patches that range from 5 percent to 100 percent. Mark this initial page to identify it from the final Color Reference Page, which is printed automatically at the completion of your adjustments.
- A calibration page that changes, based on the adjustment procedure. The calibration page is your primary tool for evaluating when an adjustment is required. To allow you to repeat an adjustment until the calibration is complete, this page reprints each time you make an adjustment. All colors on a calibration page reflect the previous adjustments. An adjustment is complete when the center, or zero, position shows the best available color setting.

With one exception, print color calibration pages on white paper. The white toner adjustment requires black paper.

## Transfer Voltage

Use the transfer voltage calibration routine if mottle or other inconsistencies in the white toner areas are visible in the printed output, or there are other signs of toner adhesion issues. There is an internal transfer voltage routine that you can access when you are logged in as an administrator. The transfer voltage routine allows users to adjust the transfer voltage for different media weights.

Use Transfer Voltage Adjustment to specify the bias transfer roller voltage for printing on the selected paper type. If the printed image is too light, increase the voltage for the paper that you are using. If the printed image looks mottled or blotchy, decrease the voltage for the paper that you are using.

For more details, refer to the *Xerox® VersaLink® C8000W Color Printer User Guide* at [www.xerox.com/office/VLC8000Wdocs](http://www.xerox.com/office/VLC8000Wdocs).

## Color Fringing Removal

The use of white toner instead of black can cause colors to appear on the fringes of printed images. To mitigate color image fringes, in the print driver, disable the Advanced Image Enhancement feature, then print again. When you disable this feature, the following features are disabled: Edge Enhancement, Thin line Enhancement, Black Enhancement, and Trapping. To disable Advanced Image Enhancement, do the following:

1. For the PostScript print driver, select **Printer Properties**.
2. Select the **Advanced** tab.
3. Select **Driver**.
4. From the Image Enhancement menu, select **OFF**.
5. Click **OK**.
6. Select **Print**.

# Printing with Microsoft Applications

This chapter contains:

- Printing RGB Composite Files with Microsoft Applications ..... 16
- White Star on Blue Paper with an RGB File ..... 20
- Green Star on White Paper with an RGB File..... 21
- Green and Yellow Star on Blue Paper with an RGB File..... 22
- White and CMY Toners on Clear Media ..... 23

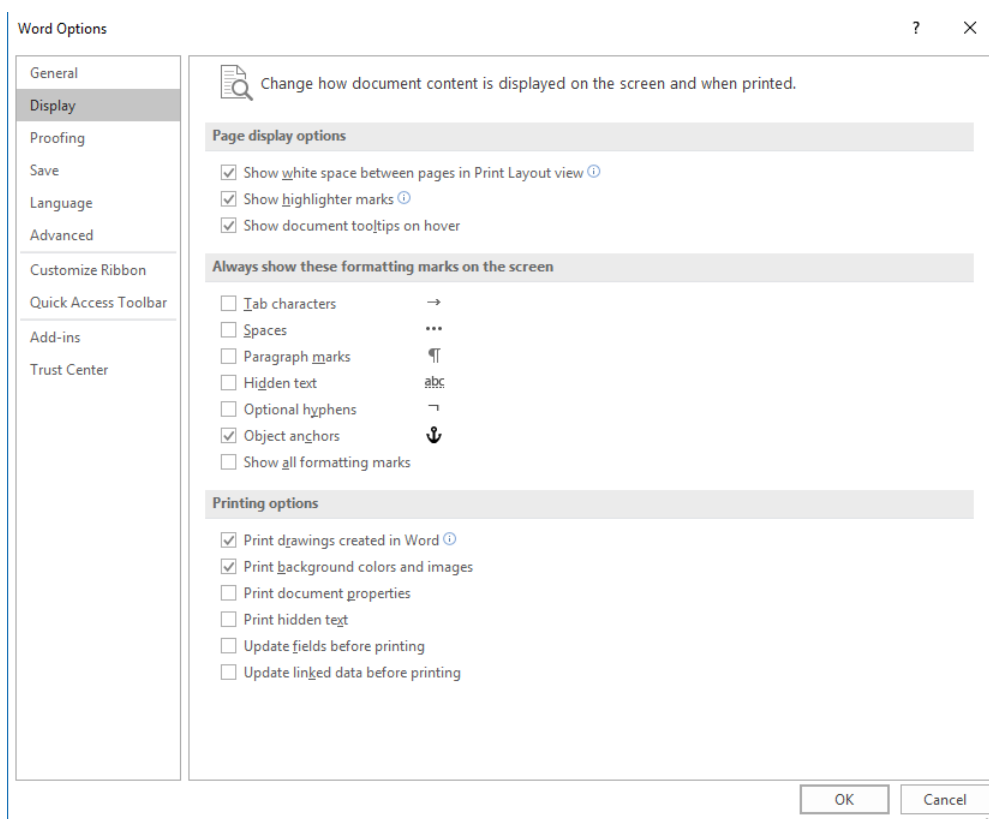
## Printing RGB Composite Files with Microsoft Applications

To use the paper as your background so that the background prints with no toner, ensure that the **Automatic Background** setting is enabled, or add a no-toner value background manually using the following process.

To add a no-toner background manually, you can assign a color to the background. To assign the color, fill the background with the appropriate no-toner value. For details, refer to the table in [Color Media Options](#). This option helps to prevent adding toner where you have no design elements.

## Reducing the Visibility of Margins in Microsoft® Word Documents

1. In Microsoft® Word, from the ribbon, select **File > Options > Display**.
2. For **Printing options**, ensure that the check box is selected for **Print background colors and images**.




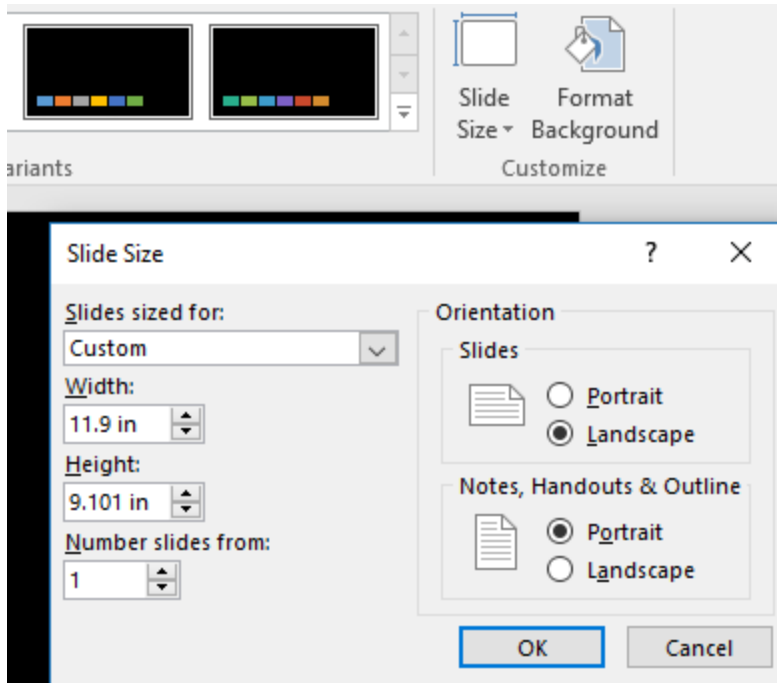
## Reducing the Visibility of Margins in Microsoft® PowerPoint®

1. In Microsoft® PowerPoint®, from the ribbon, select **Design**, then from the Customize area, select **Slide Size > Custom Slide Size....**
- 16 Xerox® VersaLink® C8000W Color Printer  
Essential Guide to Successful Printing



- For **Width** and **Height**, use the arrows to select the required values, or type the required values.

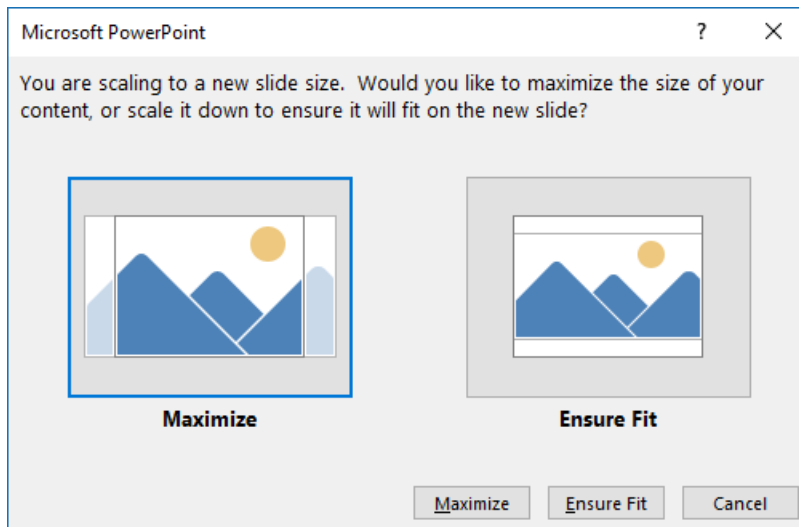
 **Note:** This example shows values for Letter size documents. If you print on other size documents, to that ensure the document covers the entire output document area as needed, add more bleed. Ensure that your design elements do not exceed the page boundaries, and that only the background exceeds the page boundaries.



- Click **OK**.

The scaling window appears.

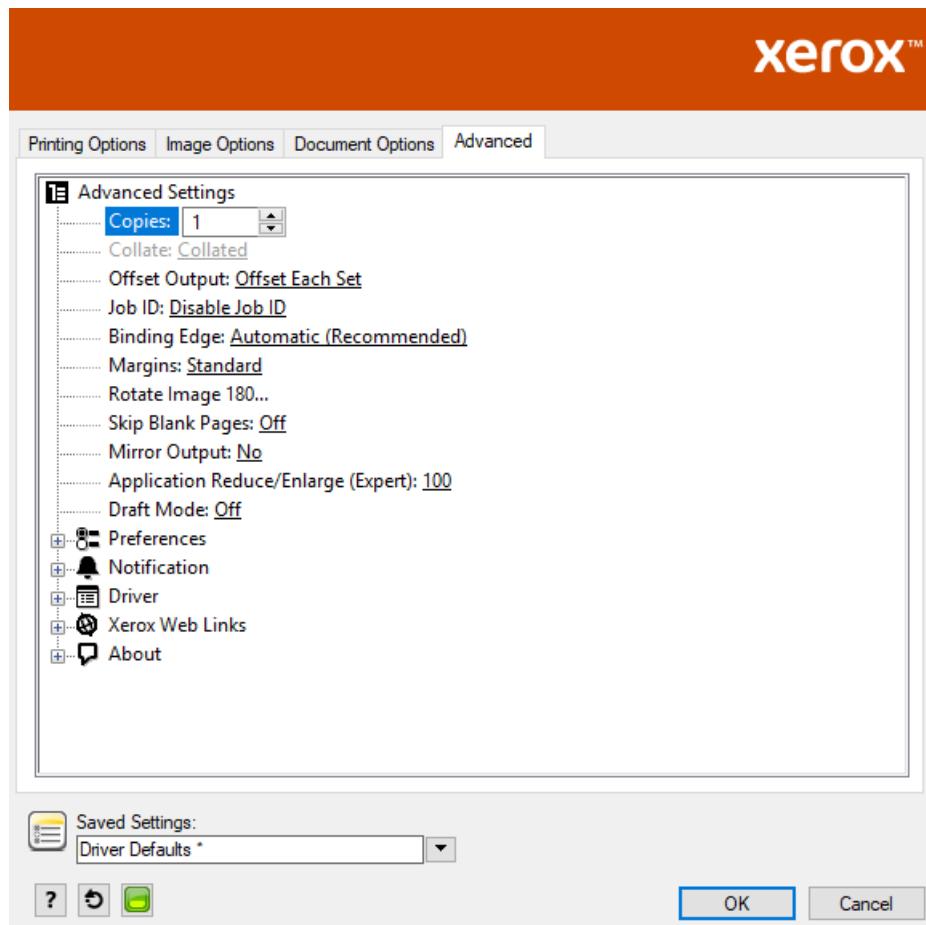
- Select **Maximize**.



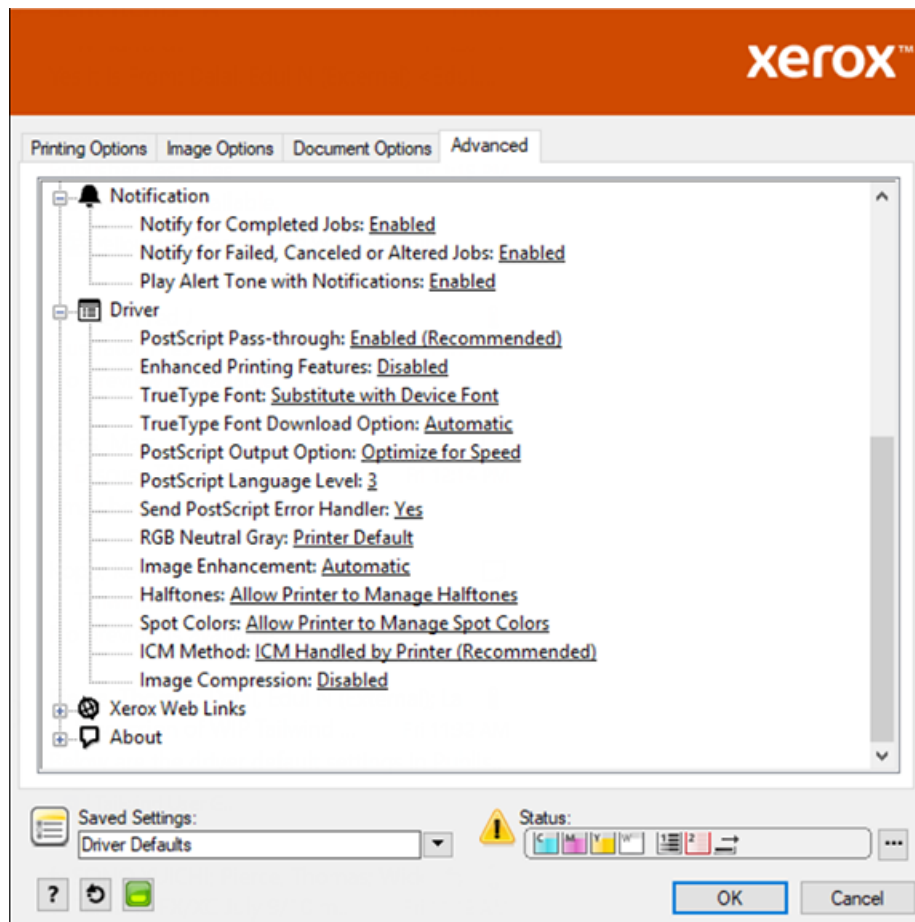
When you print a document, if you are prompted with a warning about printing outside of the printable area, select **Ignore**.

## Reducing the Visibility of Margins in Microsoft® Publisher

1. In the PostScript print driver, select the settings for margins in the print driver as shown.




2. Select the toner adjustment settings that you need. The following settings are the default advanced settings to use.

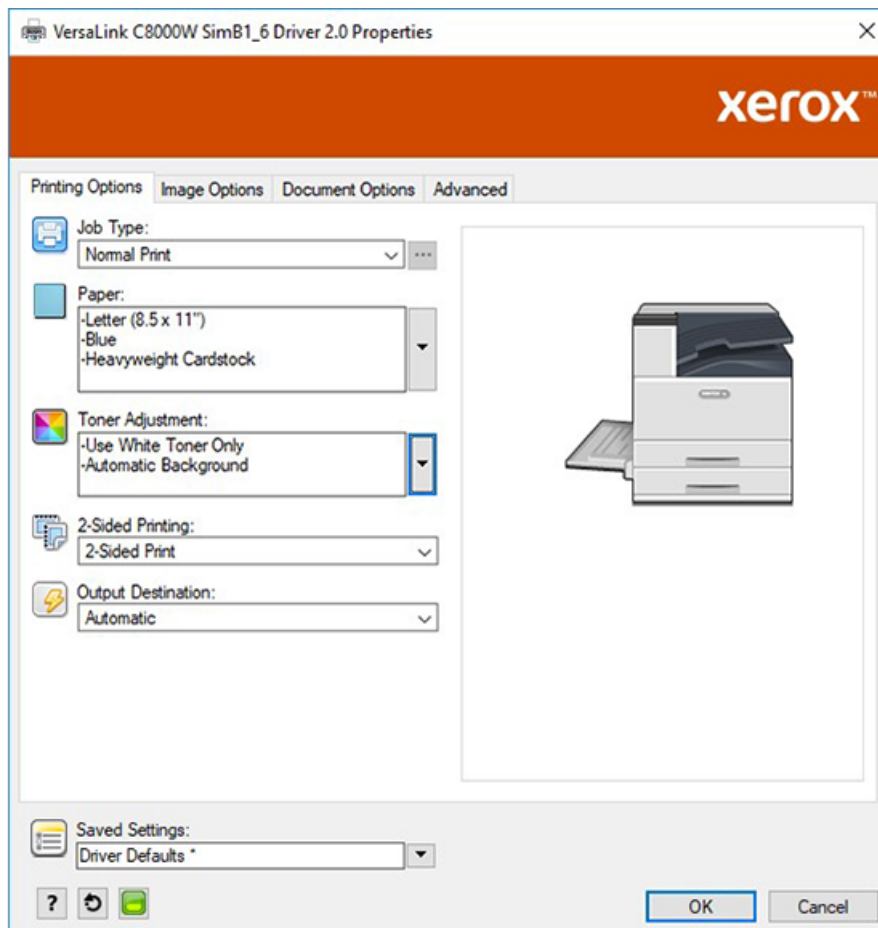


## White Star on Blue Paper with an RGB File

When you select **Use White Toner Only**, the printer prints white toner only, in reverse grayscale.

 **Note:** This option replaces black areas in your document with white toner. White areas of your document print with no toner.

1. Place a black star in a Microsoft® Publisher document.
2. In the PostScript print driver, select the **Paper** settings and **Toner Adjustment** options as follows. Ensure that the tray that contains the blue paper that you are using is selected. For **Toner Adjustment**, ensure that **Use White Toner Only** is selected.

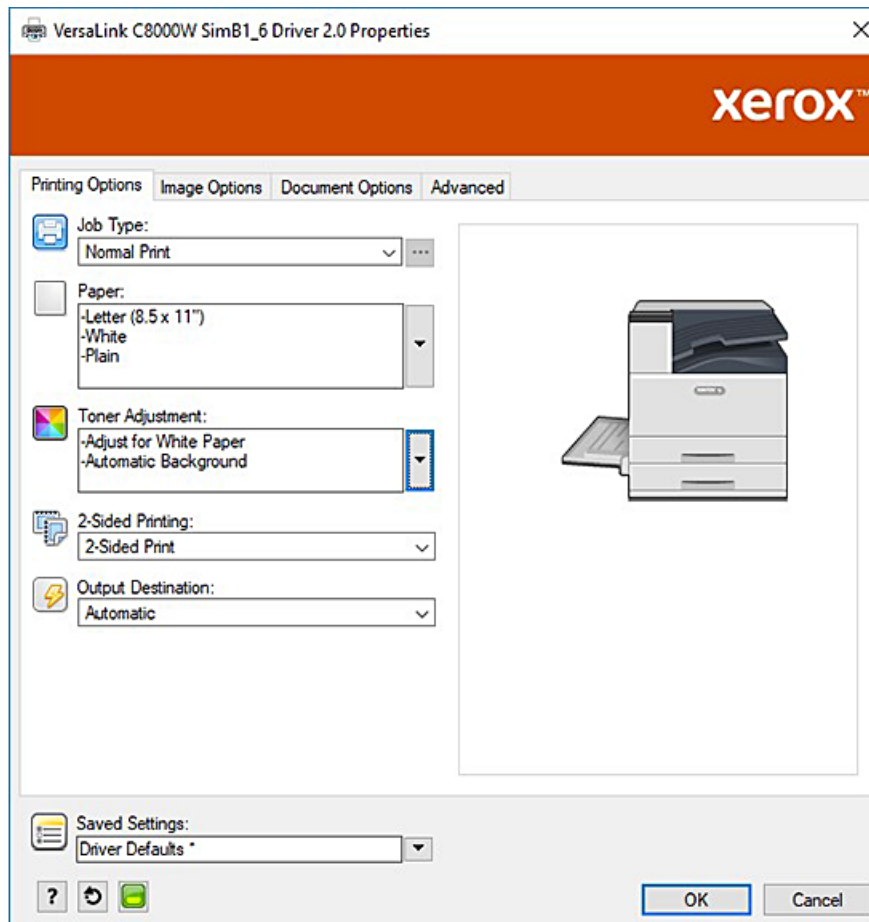


3. Click **OK**, then click **Print**.  
The black star prints as a bright white star.

## Green Star on White Paper with an RGB File

This example uses cyan, yellow, and magenta to produce the output.

1. Place a star in a Microsoft® Publisher document, then select green fill for the outline and green fill for the body of the star.
2. In the PostScript print driver, select the **Paper** settings and **Toner Adjustment** options as shown. Ensure that the tray that contains the white paper that you are using is selected. For **Toner Adjustment**, ensure that **Adjust for White Paper** is selected.

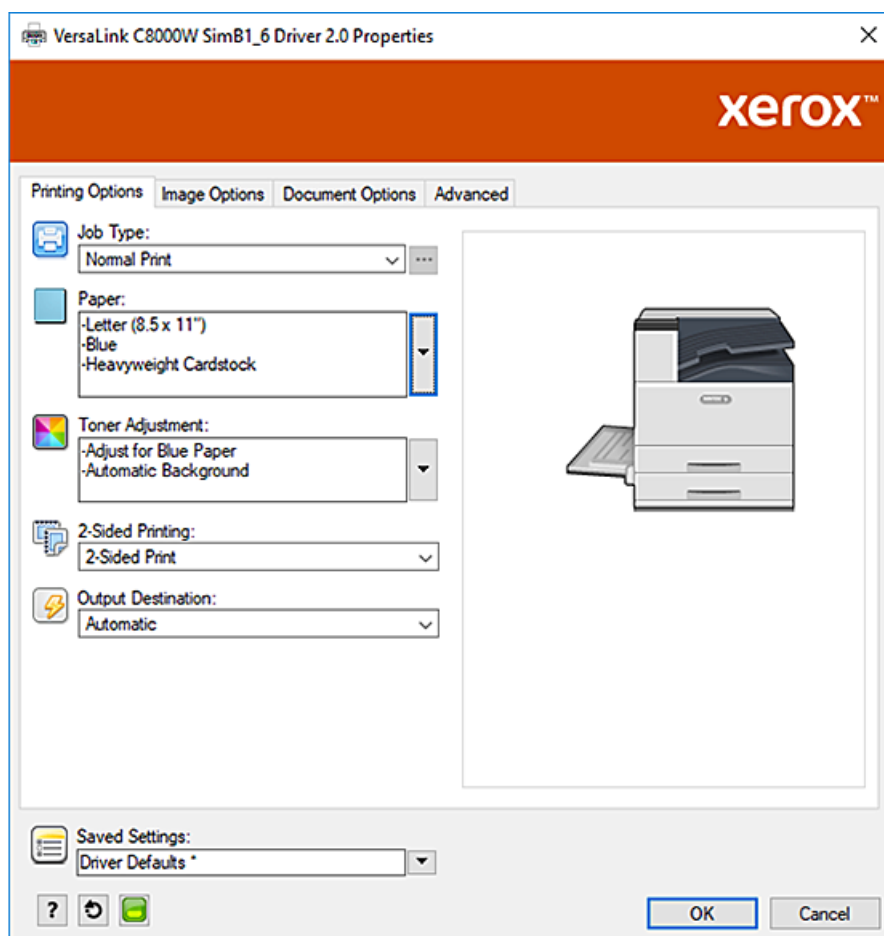


3. Click **OK**.

## Green and Yellow Star on Blue Paper with an RGB File

This example uses a white underlay with cyan and yellow on top.

1. Place a star in a Microsoft® Publisher document, then select yellow fill for the outline and green fill for the body of the star.
2. In the Publisher document, set the background of the file to the no-toner value for the media that you are using. For details, refer to the table in [Color Media Options](#).  
To set the background automatically, in the print driver, in addition to the **Adjust for Blue Paper** setting, for **Toner Adjustment**, select **Automatic Background**.
3. Select the **Paper** settings and **Toner Adjustment** options as shown. Ensure that the tray that contains the blue paper that you are using is selected. For **Toner Adjustment**, in addition to your **Automatic Background** selection, ensure that **Adjust for Blue Paper** is selected.



4. Click **OK**, then click **Print**.

# White and CMY Toners on Clear Media

These instructions for clear media are for reflective, not transmissive, applications only.

1. Create your design using one of the following procedures, using the no-toner values defined in the table in [Color Media Options](#):
  - For firmware version 72.67.91 and print driver version Windows 5.860.1 and Mac 5.10.0, or later, use a white background for your design. Fill the bottom layer with the no-toner value for clear.
  - For earlier software versions, use a gray background for your design. Fill the bottom layer with the no-toner value for gray.

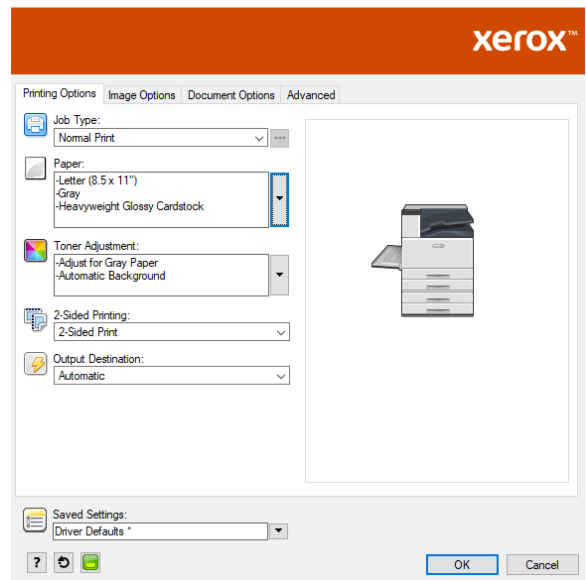
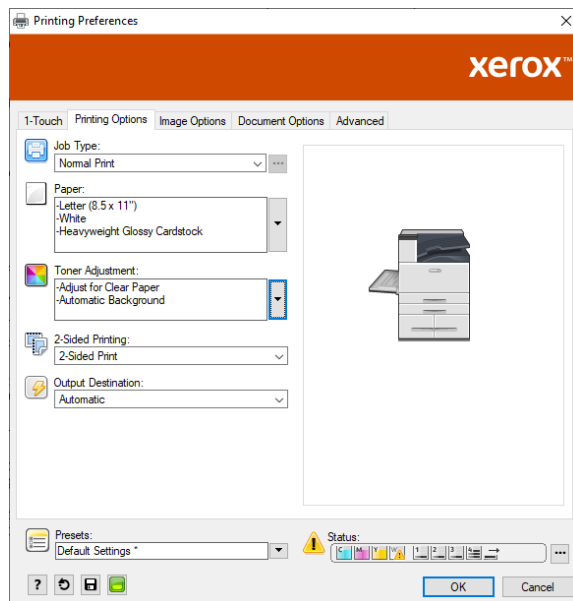
To set the background automatically, in the Toner Adjustment settings in the print driver, in addition to the **Adjust for Clear Paper** or **Adjust for Gray Paper** setting, select **Automatic Background**.
2. Load the clear media in the bypass tray. In the print driver, for Paper, select the correct size, and specify **Heavyweight Glossy Cardstock** and one of the following colors, depending on your software version:
  - For firmware version 72.67.91 and print driver version Windows 5.860.1 and Mac 5.10.0, or later, select **White**.
  - For earlier software versions, select **Gray**.



**Note:** These options produce the best fusing performance.

## Printing with Microsoft Applications

3. Select the Toner Adjustment options as shown. Ensure that the tray that contains the clear media that you are using is selected. For Toner Adjustment, in addition to your **Automatic Background** selection referred to in step 1, select one of the following options:
  - For firmware version 72.67.91 and print driver version Windows 5.860.1 and Mac 5.10.0, or later, select **Adjust for Clear Paper**.
  - For earlier software versions, select **Adjust for Gray Paper**.





# Printing with Adobe® Applications

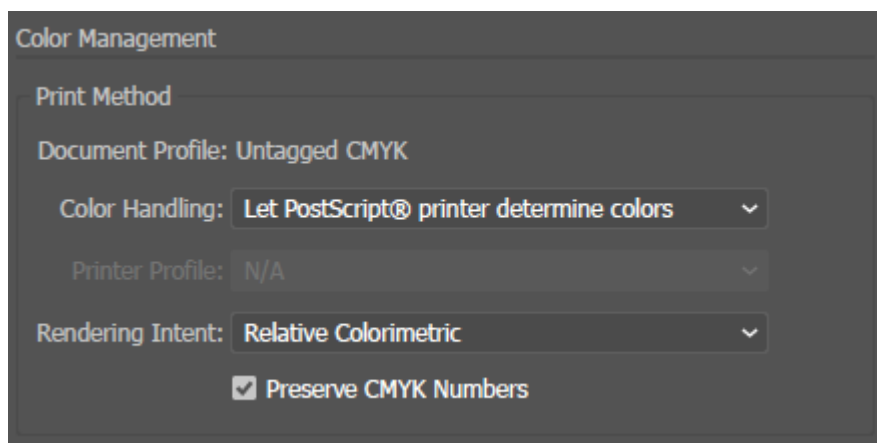
This chapter contains:

- Guidelines for Printing with Adobe Applications..... 26
- White Only on Blue Paper with a CMYK File..... 28
- Green Box on White Paper with a CMYK File ..... 30
- Green and Yellow Box on Blue Paper with a CMYK File..... 32
- Green and Yellow Box on Blue Paper with an RGB File ..... 34
- White and CMY Toners on Clear Media Using RGB Files ..... 36
- General Tips for Using Adobe Design Products ..... 38

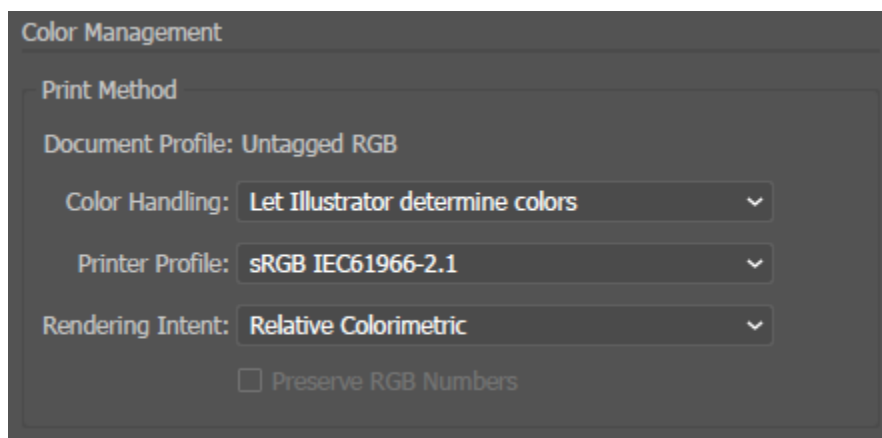
## Guidelines for Printing with Adobe Applications

When you print with Adobe applications, refer to the following guidelines:

- To use the media color as the background with no added toner, create a rectangle that is the size of the output document. Fill the rectangle with the no-toner value for the media color toner adjustment you are using. Assign that layer to the bottom of the design to create the background. Alternatively, you can set the media color as the background automatically: In the **Toner Adjustment** settings in the print driver, in addition to your adjust for colored paper selection, you can select **Automatic Background**.
- The PostScript print driver settings that you select vary depending on the type of job you are printing. The following guidelines are the current recommendations for printing on the Xerox® VersaLink®C8000W Color Printer from various applications, in CMYK and RGB color modes, for vector and raster images. For documents with mixed content, experiment with the settings to achieve the required output.
  - For raster images, in the Color Management area of the print driver, for **Color Handling**, select **Let PostScript® printer determine colors**. When working in Illustrator®, for CMYK images, select the check box for **Preserve CMYK Numbers**, and for **Rendering Intent**, leave as the default value, which is **Relative Colorimetric**.

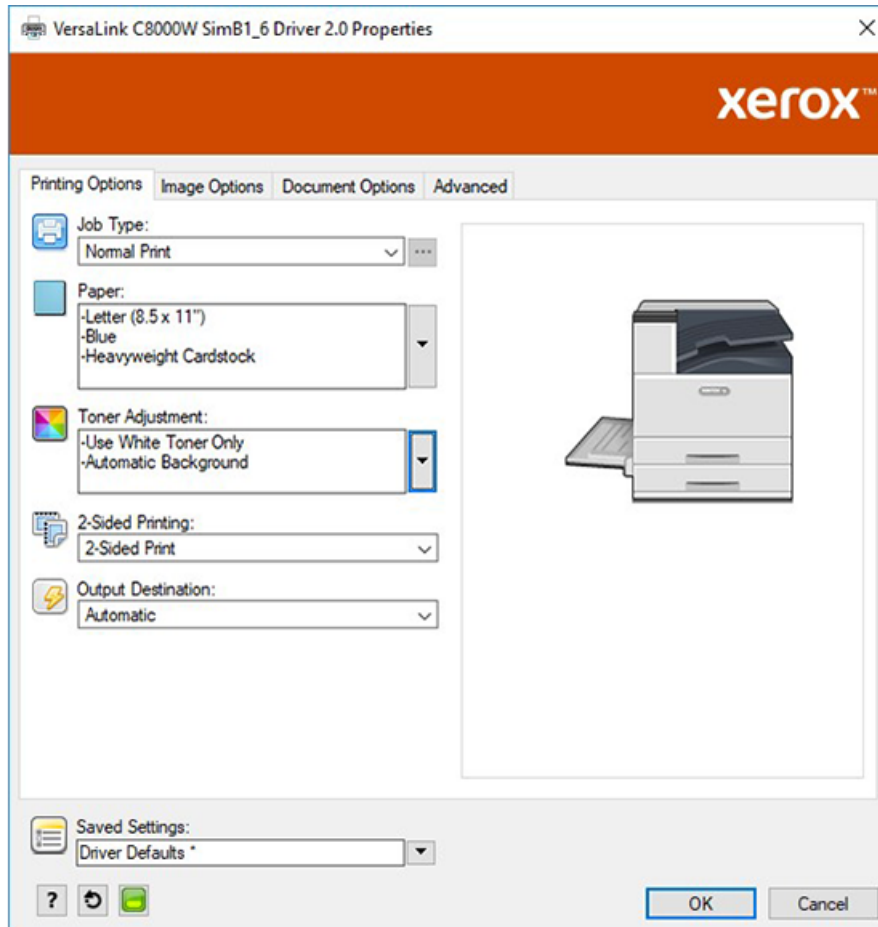


- For vector images in CMYK that you print from Illustrator, ensure that the PostScript print driver settings are the same as for the raster images.
- For raster images in RGB files that you print from Illustrator, in the Color Management area, for **Color Handling**, select **Let PostScript® printer determine colors**.
- For vector images in RGB files that you print from Illustrator, in the Color Management area, for **Color Handling**, select **Let Illustrator determine colors**.

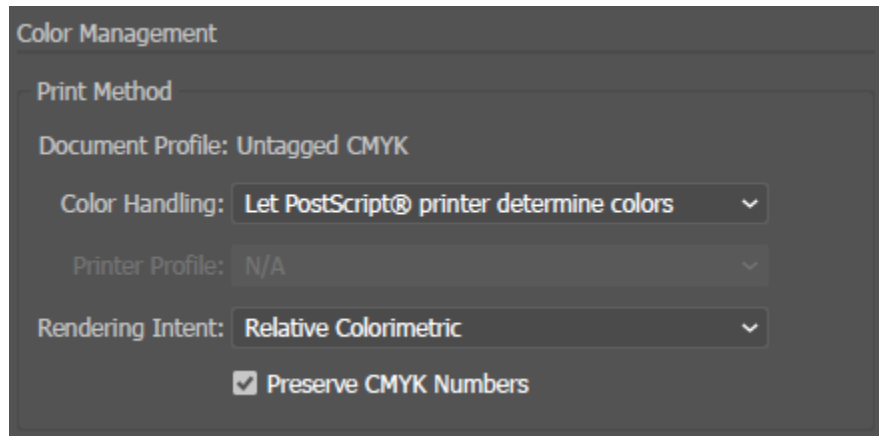


## White Only on Blue Paper with a CMYK File

1. Open an Illustrator document, then place an image file, such as a .jpeg file, that transitions to grayscale correctly.
2. In the PostScript print driver, select the **Paper** settings and **Toner Adjustment** options as shown. Ensure that the tray that contains the blue paper that you are using is selected. For **Toner Adjustment**, ensure that **Use White Toner Only** is selected.



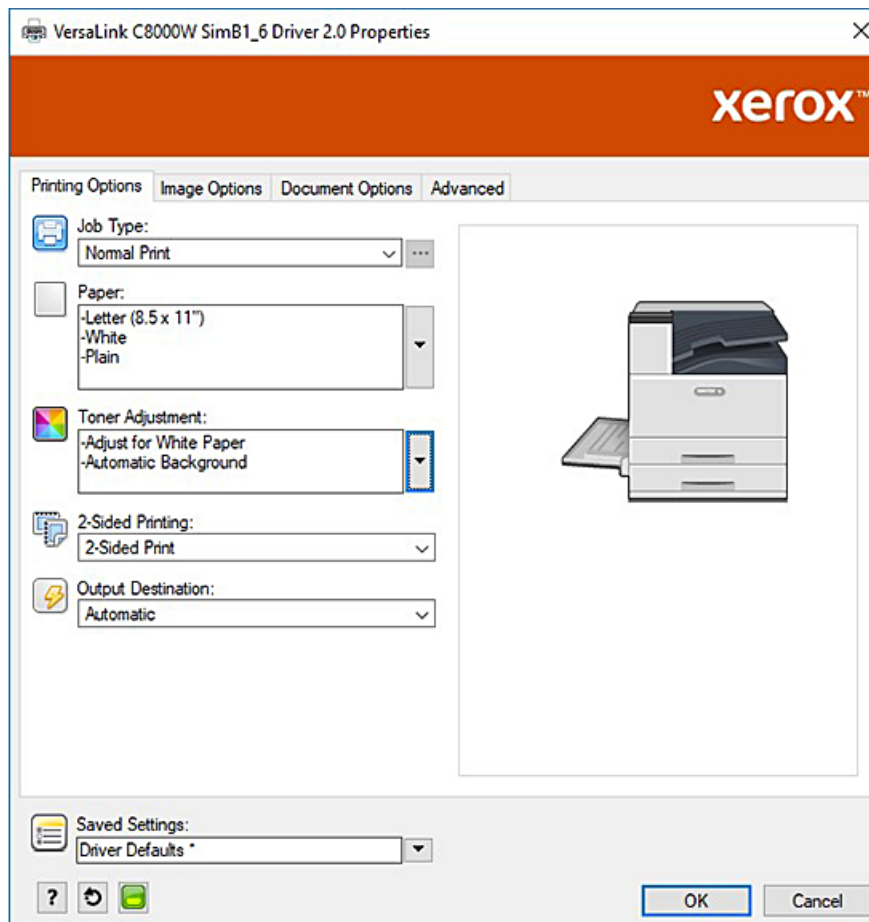
3. Adjust the Illustrator **Color Management** settings to allow the PostScript printer to assign colors and maintain the CMYK values as shown.



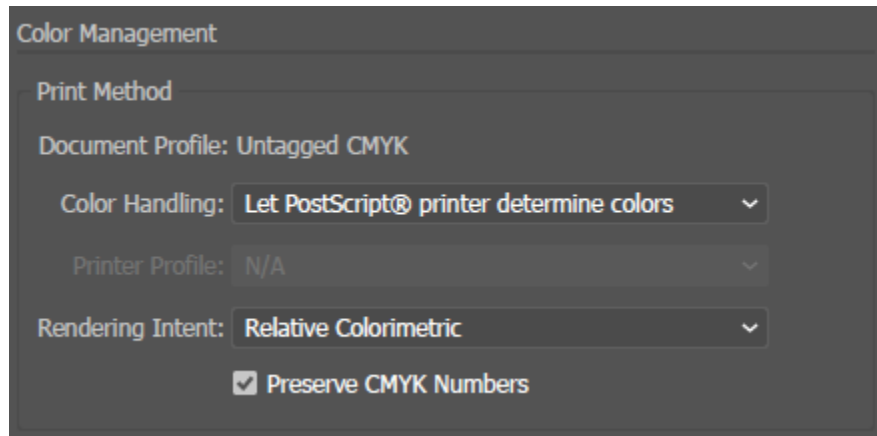
## Green Box on White Paper with a CMYK File

This example uses cyan, yellow, and magenta to produce the output.

1. Open an Illustrator document, then place a rectangle. Select Green fill for the body of the box. To set the background automatically, in the print driver, for **Toner Adjustments**, select **Adjust for White Paper** and **Automatic Background**.
2. In the PostScript print driver, select the **Paper Settings** and **Toner Adjustment** options as shown. Ensure that the tray that contains the white paper that you are using is selected. For **Toner Adjustment**, in addition to your **Automatic Background** selection referred to in step 1, ensure that **Adjust for White Paper** is selected.



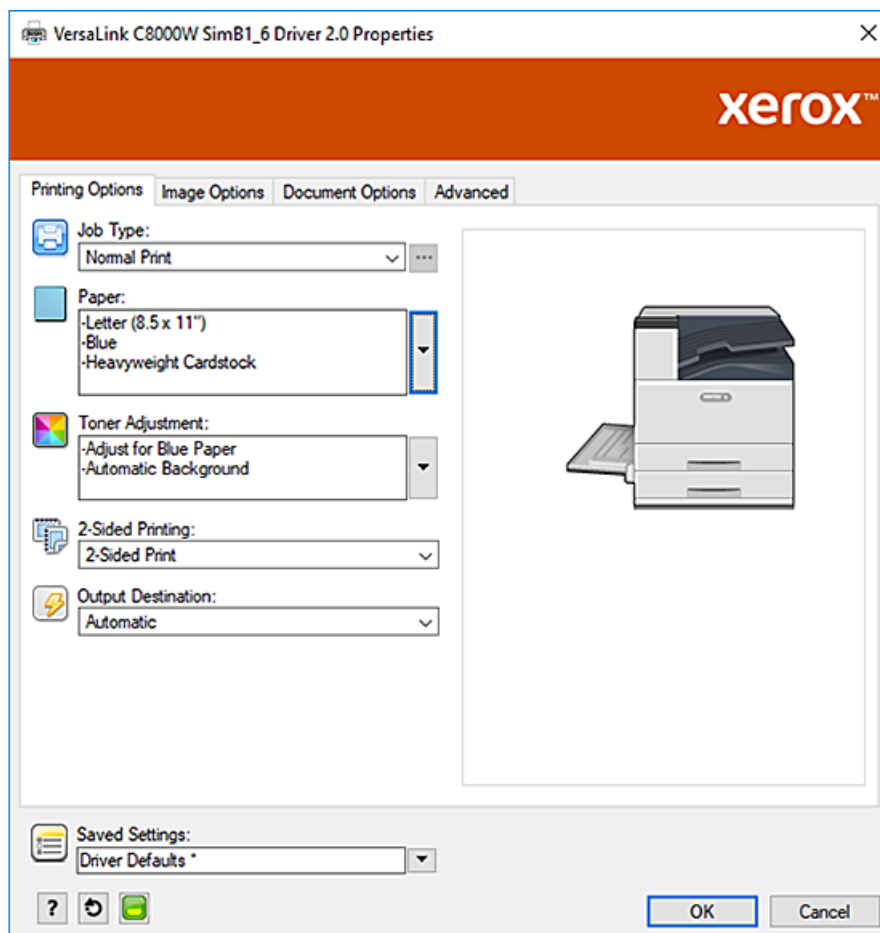
3. Adjust the Illustrator **Color Management** settings to allow the PostScript printer to assign colors and maintain the CMYK values as shown.



## Green and Yellow Box on Blue Paper with a CMYK File

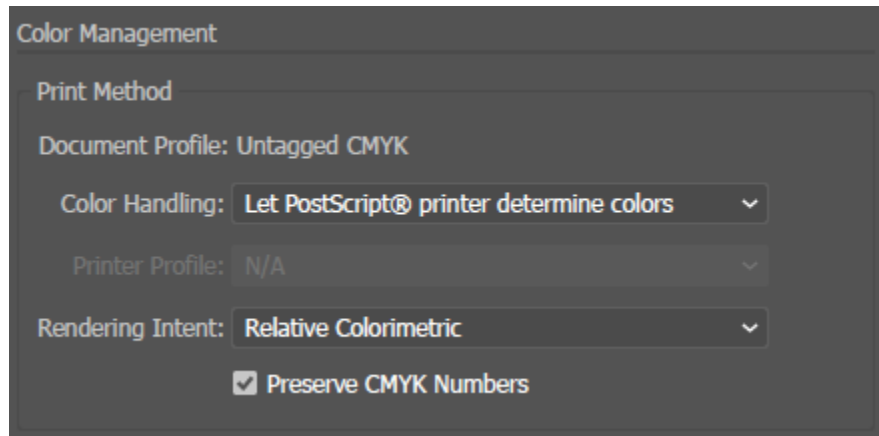
This example uses a white underlay with cyan, magenta, and yellow on top.

1. In an Illustrator document, place a rectangle as the bottom layer on your design. Set the fill color of the rectangle to the CMYK no-toner value for blue media, as defined in the table in [Color Media Options](#).  
To set the background automatically, in the **Toner Adjustment** settings in the print driver, in addition to the **Adjust for Blue Paper** setting, select **Automatic Background**.
2. Place another smaller rectangle above the background no-toner rectangle. Set the fill of the smaller rectangle to be a gradient between green and yellow.
3. In the PostScript print driver, select the **Paper Settings** and **Toner Adjustment** options as shown. Ensure that the tray that contains the blue paper that you are using is selected. For **Toner Adjustment**, in addition to your **Automatic Background** selection referred to in step 1, ensure that **Adjust for Blue Paper** is selected.





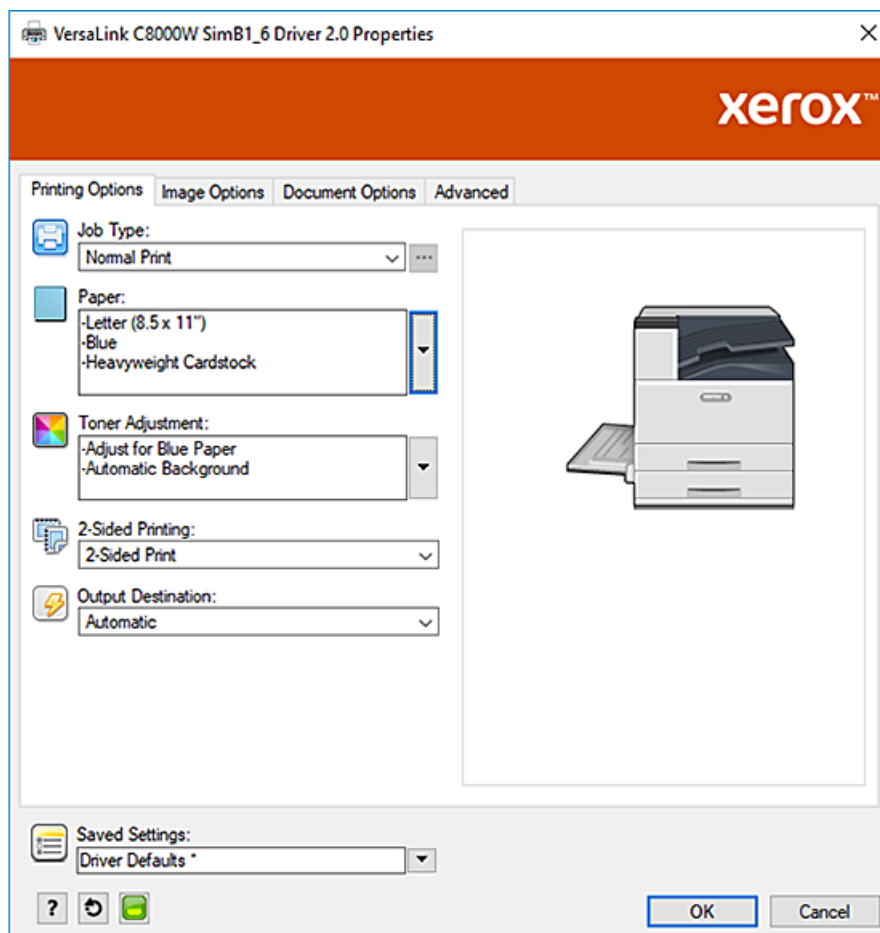
4. Adjust the Illustrator **Color Management** settings to allow the PostScript printer to assign colors and maintain the CMYK values as shown.



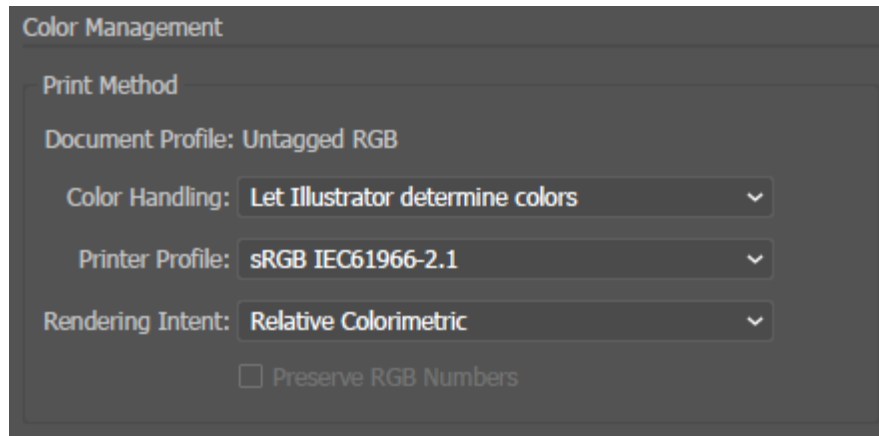
## Green and Yellow Box on Blue Paper with an RGB File

This example uses a white underlay with cyan, magenta, and yellow on top.

1. In an Illustrator document, place a rectangle as the bottom layer on your design. Set the fill color of the rectangle to the RGB no-toner value for blue media, as defined in the table in [Color Media Options](#).  
To set the background automatically, in the print driver, in addition to the **Adjust for Blue Paper** setting, for **Toner Adjustment**, select **Automatic Background**.
2. Place another smaller rectangle above the background no-toner rectangle. Set the fill of the smaller triangle to be a gradient between green and yellow.
3. In the PostScript print driver, select the **Paper Settings** and **Toner Adjustment** options as shown. Ensure that the tray that contains the blue paper that you are using is selected. For **Toner Adjustment**, in addition to your **Automatic Background** selection referred to in step 1, ensure that **Adjust for Blue Paper** is selected.




4. In the Illustrator **Color Management** settings, for **Color Handling**, select **Let Illustrator determine colors**.



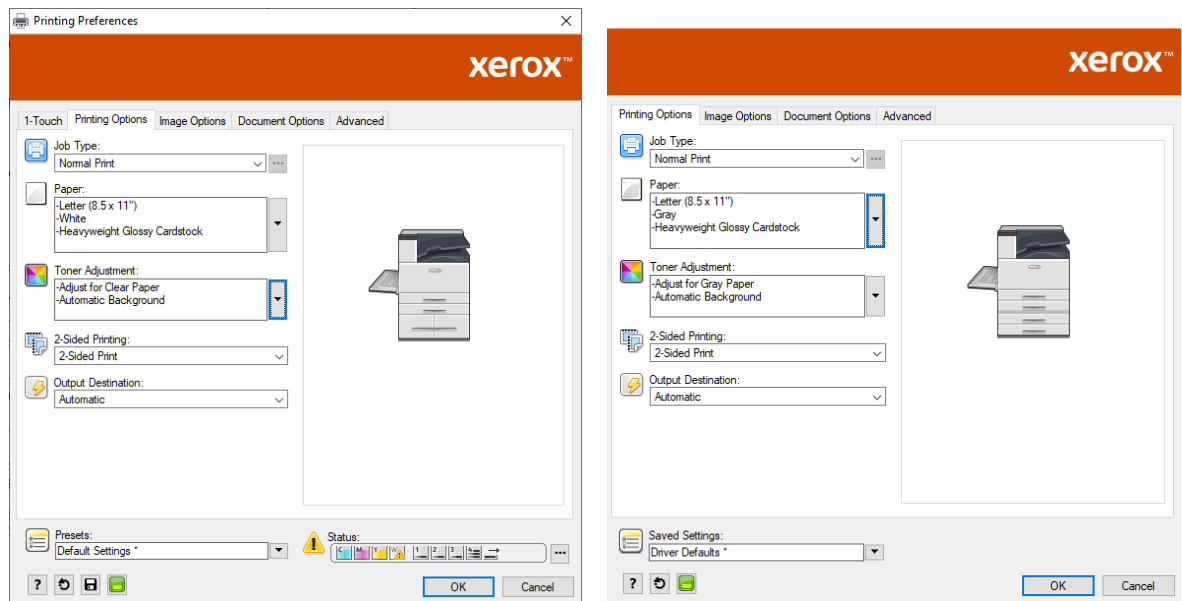
# White and CMY Toners on Clear Media Using RGB Files

These instructions for clear media are for reflective, not transmissive, applications only.

1. In an Illustrator document, create your design using one of the following procedures, using the no-toner values defined in the table in [Color Media Options](#):
  - For firmware version 72.67.91 and print driver version Windows 5.860.1 and Mac 5.10.0, or later, use a white background for your design. Fill the bottom layer with the no-toner value for clear.
  - For earlier software versions, use a gray background for your design. Fill the bottom layer with the no-toner value for gray.To set the background automatically, in the Toner Adjustment settings in the print driver, in addition to the **Adjust for Clear Paper** or **Adjust for Gray Paper** setting, select **Automatic Background**.
2. Load the clear media in the bypass tray. In the print driver, for Paper, select the correct size, and specify **Heavyweight Glossy Cardstock** and one of the following colors, depending on your software version:
  - For firmware version 72.67.91 and print driver version Windows 5.860.1 and Mac 5.10.0, or later, select **White**.
  - For earlier software versions, select **Gray**.

 **Note:** These options produce the best fusing performance.

3. Select the Toner Adjustment options as shown. Ensure that the tray that contains the clear media that you are using is selected. For Toner Adjustment, in addition to your **Automatic Background** selection referred to in step 1, select one of the following options:
  - For firmware version 72.67.91 and print driver version Windows 5.860.1 and Mac 5.10.0, or later, select **Adjust for Clear Paper**.
  - For earlier software versions, select **Adjust for Gray Paper**.



4. Adjust the Illustrator Color Management settings. For CMYK files, allow the PostScript printer to assign colors and maintain the CMYK values. For RGB files, allow Illustrator to determine colors. For tips on printing on clear media, refer to [Guidelines for Printing on Clear Media](#).

## General Tips for Using Adobe Design Products

- If you use a drop shadow with InDesign® or Illustrator, a box can appear around the image.
- An unflattened blend can produce unwanted results that can be seen only in the printed output.
- No-toner values are not recognized for rasterized images, such as some gradients, drop shadows, or vector plus raster blends. As a result, all areas are covered with toner, which prevents unintended discontinuities in images that have this value.
- When you create a new document in InDesign and Illustrator, you start with a set of default colors. Print on black paper to verify that the colors match what you expect. If the colors are not what you expect, you can create your own colors.
- Objects are processed and printed based on the object and layer order in your design.



# Xerox Reference Media

This appendix contains:

- [No-Toner Values for Xerox Reference Media](#) ..... 40

## No-Toner Values for Xerox Reference Media

Media Color	Xerox Reference Media	Toner Adjustment Setting	No-Toner Values		Media Colorimetric Values		
			RGB (0–255)	CMYK (%)	L*	a*	b*
Black	Mohawk Vellum -6X40-80-320M-L-BLACK	Adjust for Black Paper	64, 64, 64	0, 0, 0, 100	26.168	0.993	-2.243
White	Xerox Bold	Adjust for White Paper	255, 255, 255	0, 0, 0, 0			
Clear		Adjust for Clear Paper*	16, 16, 0	100, 100, 100, 100			
Blue	Carnival Vellum iTone Cover- 80-S- Deep Blue	Adjust for Blue Paper	16, 32, 64	70, 50, 5, 70	25.193	-0.18	-15.047
Yellow	Carnival Vellum Cover- 80-L- Yellow	Adjust for Yellow Paper	255, 255, 128	0, 0, 50, 0	81.899	12.33262	63.70108
Green	Carnival Vellum iTone Cover- 80-S - Forest Green	Adjust for Green Paper	16, 48, 32	85, 50, 70, 50	30.758	-13.019	0.859
Pink	Mohawk Vellum Cover- 80 - 216 gm <sup>2</sup> - Rhodamine	Adjust for Pink Paper	255, 64, 255	0, 50, 0, 0	55.385	58.743	-5.491
Gray	Strathmore Prem Wove Text- 80-L- Smoke Gray	Adjust for Gray Paper	191, 191, 191	11, 11, 11, 11	63.428	0.346	2.225
Red	Carnival Vellum iTone Cover-80-S- Red	Adjust for Red Paper	255, 32, 48*	0, 100, 85, 20**	35.635	47.642	17.762
Orange	Mohawk Vellum Text - 70 L- Warm Red	Adjust for Orange Paper	255, 160, 96	0, 35, 85, 0	63.831	51.833	43.899
Purple	Strathmore Prem Wove Text- 80-L- Eggplant	Adjust for Purple Paper	79, 63, 79	85, 85, 70, 5	28.007	9.508	-5.494
Brown	Strathmore Prem Wove Text- 80-L- Mahogany	Adjust for Brown Paper	80, 64, 64	50, 50, 50, 35	26.684	3.9	4.095
Cyan	Mohawk Vellum Cover- 80 -L-Cyan	Adjust for Cyan Paper	86, 255, 255	85, 20, 0, 0	55.261	-18.258	-38.488

\* This feature is available with firmware version 72.67.91 or later, and print driver version Windows 5.860.1 and Mac 5.10.0, or later only. To download the latest software versions, visit [www.xerox.com/](http://www.xerox.com/)



[office/VLC8000Wsupport](#). For information about printing on clear media with earlier software versions, refer to [Guidelines for Printing on Clear Media](#).

\*\* Use this value for software versions for this printer later than 72.64.01. For software version 72.64.01, use RGB [240,80,112] or CMYK [10,85,50,10].



# B

## Automatic Background Feature

This appendix contains:

- [Known Issues with the Automatic Background Feature.....](#) 44

## Known Issues with the Automatic Background Feature

There are some known issues when you use the Automatic Background feature in the print driver only, rather than use no-toner values to set the background manually. The following list details the application and operating system affected, and the solution:

- Acrobat®: Disable PostScript Passthrough on both Mac® and Microsoft® Windows.
- Illustrator®: No issues.
- Microsoft® Publisher: No issues.
- InDesign®: No issues.
- Microsoft® Word: In Microsoft® Word for Microsoft® 365 and Mac® only, ensure that you change the background color from White to 100 % Transparent.
- Microsoft® PowerPoint:
  - Microsoft® Windows®: Change the background color from White to 100 % Transparent.
  - Mac®: The Automatic Background feature does not work with this application. Instead, set a no-toner value background manually in your document design.
- Other applications: It is likely that the Automatic Background feature does not work as expected in other applications. In these cases, set a no-toner value background manually in your document design.



