

Xerox® WorkCentre® 5945/5955

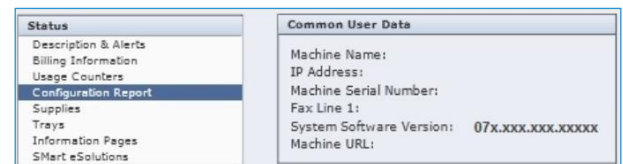
Software Installation Instructions

Upgrading Software for Xerox® ConnectKey® Technology

A new firmware update containing the latest improvements is available for your ConnectKey-enabled multifunctional printer. The upgrade process can be performed on Xerox® devices built on ConnectKey Technology currently running software versions starting with 071, 072 or 073.

Identify the Device Software Version

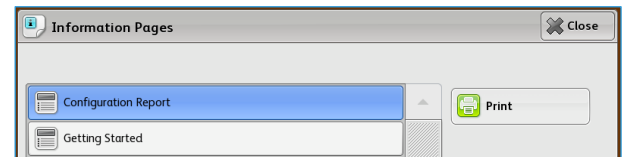
1. At the computer, open an Internet browser window.
2. Enter the IP Address of the device in the **Address** field in the format **http://xx.xxx.xxx.xx** and then press **Enter** on the keyboard. The CentreWare Internet Services home page is displayed.
3. Select the **Status** tab, and then select **Configuration Report**.
4. Scroll to the **Common User Data** section and record the **System Software Version** shown.



Print a Configuration Report

It is important to print and keep a Configuration Report for reference until after the software update has been completed.

1. At the device, press the **Machine Status** button.
2. Touch the **Information Pages** button.
3. Touch **Configuration Report** and then touch **Print**.



Upgrade Procedures

Upgrade Tool (Recommended)	To upgrade your device, we recommend you use the Xerox® ConnectKey® Technology Software Upgrade Utility. This utility enables you to upgrade your device automatically by running through our quick and easy-to-use tool interface. To use the recommended automatic upgrade process, follow the instructions provided on page 2.								
Manual Upgrade	If you experience problems with the automatic upgrade procedure, a manual upgrade process can be used. The instructions vary depending on your current software level, identify the correct procedure to follow for your device using the table below:								
	<table border="1" data-bbox="378 1650 1549 1682"> <thead> <tr> <th data-bbox="378 1650 634 1682">Software Version</th> <th data-bbox="643 1650 1549 1682">Procedure</th> </tr> </thead> <tbody> <tr> <td data-bbox="378 1692 634 1724">071.xxx.xxx.xxxxx</td> <td data-bbox="643 1692 1549 1724">Complete Part 1 and Part 2 instructions (see page 4)</td> </tr> <tr> <td data-bbox="378 1734 634 1766">072.xxx.xxx.xxxxx</td> <td data-bbox="643 1734 1549 1766">Complete Part 2 instructions (see page 5)</td> </tr> <tr> <td data-bbox="378 1776 634 1808">073.xxx.xxx.xxxxx</td> <td data-bbox="643 1776 1549 1808">Complete Part 3 instructions (see page 7)</td> </tr> </tbody> </table>	Software Version	Procedure	071.xxx.xxx.xxxxx	Complete Part 1 and Part 2 instructions (see page 4)	072.xxx.xxx.xxxxx	Complete Part 2 instructions (see page 5)	073.xxx.xxx.xxxxx	Complete Part 3 instructions (see page 7)
	Software Version	Procedure							
	071.xxx.xxx.xxxxx	Complete Part 1 and Part 2 instructions (see page 4)							
072.xxx.xxx.xxxxx	Complete Part 2 instructions (see page 5)								
073.xxx.xxx.xxxxx	Complete Part 3 instructions (see page 7)								
071.xxx.xxx.xxxxx	Complete Part 1 and Part 2 instructions (see page 4)								
072.xxx.xxx.xxxxx	Complete Part 2 instructions (see page 5)								
073.xxx.xxx.xxxxx	Complete Part 3 instructions (see page 7)								

Note: The software version you are installing must always be higher than the software version currently installed on your device for a successful upgrade to occur.

Xerox® ConnectKey® Technology Software Upgrade Utility

Automatic Upgrade to a later version of Software for Xerox® ConnectKey® Technology

This utility automatically updates devices running software versions 071.xxx.xxx.xxxxx, 072.xxx.xxx.xxxxx or 073.xxx.xxx.xxxxx to a later version of software for Xerox® ConnectKey® Technology, including all required patches.

The utility automatically validates that it is connected to the correct type of device and that the user has valid administrative credentials before the upgrade process begins. The total upgrade process can take from 1 to 2.5 hours depending on the current software version of the device. It is a multi-step process and the device will be inoperable during this time. Ensure the device is free from faults and paper jams before starting the upgrade process.

Requirements

- Check the software version installed on your device (see instructions on page 1). If the software version number does not start with 071, 072, or 073, verify the type of device you have and check for the correct upgrade instructions on www.xerox.com/support.
- A computer with Java 6 or later installed and with network access to the WorkCentre® device.
- This utility must be downloaded and saved on your computer hard drive and opened from there. Do not run the utility from a USB drive or remote server.
- The WorkCentre® must have the HTTP option enabled. Refer to the System Administrator Guide for instructions.

Procedure

1. At the device, print a copy of the Configuration Report (see page 1 for instructions) and make sure A4 or Letter paper is loaded in at least one tray.
2. Download the **ConnectKeySoftwareUpgradeTool.zip** file. Unzip the file to your hard drive.
3. Download the **WorkCentre5945-55 Software Upgrade DLMS.zip** file and store in a folder. Unzip the file.
There is another zip file inside of the first zip file. Do **NOT unzip** this file. This zip file will be used at step 9.
4. Open the folder with the CKUpgrade###jar and double-click the Jar file (PC/Mac) or type `java -jar <jar file name>` (Linux).
5. The initial entry screen is displayed. Click **Add Devices**.
6. Enter the IP address or hostname of the device.
7. Enter the Username and Password of the device.
 - If the device does not use the Admin password, then select the Open Access checkbox.

The screenshot shows the 'ConnectKey® Technology Software Upgrade Utility' window. The main area displays 'Step 1: Add a Device' with the text 'This tool will allow you to upgrade ConnectKey® devices.' Below this are two buttons: 'Import .csv file' and 'Add Devices'. A modal dialog titled 'Add Device' is overlaid on top. It contains three input fields: 'IP/Hostname', 'Username', and 'Password', each followed by a red asterisk. Below these fields is an 'Open Access' checkbox. At the bottom of the dialog, there is a legend: '*Indicates required field' and two buttons: 'Cancel' and 'Add'.

Use the **Add Devices** button to add additional devices of the same family or of different product families. You must download the software upgrade zip files for each product family and store in the same folder from step 3.

8. Click **Next**.

9. In the “Choose Upgrade Folder” window, click the **Select** button and browse to the folder where you stored the Software Upgrade DLM zip file(s), which was unzipped in step 3, then select **Open**.
10. Click **Verify**. If any errors are posted, use the message to resolve the error.

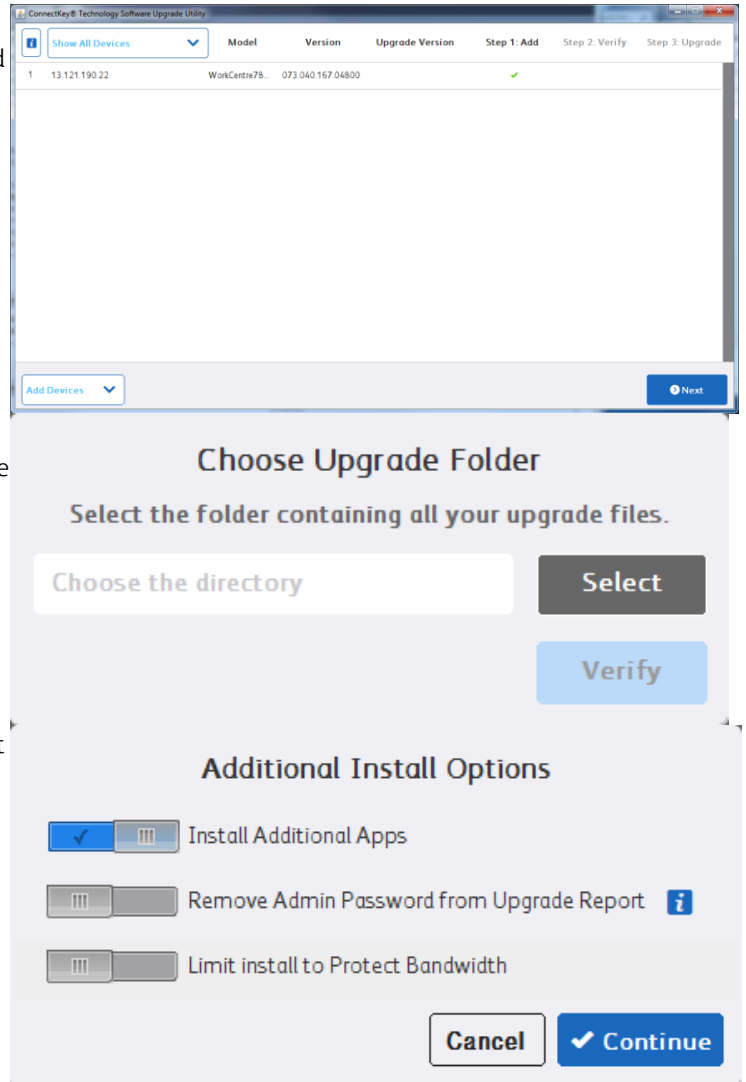
- On the Additional Install Options screen, you can choose not to install the Additional Apps by clicking the button to remove the checkmark.
- You can choose not to save the Admin password in the update report.
- You can limit the number of machines to 5 send software to simultaneously.

11. Click **Continue** to list the devices that will be upgraded.

12. Click **Upgrade** to begin the process of sending the upgrade files to the machines that have been verified.

When the software upgrade is complete, the device automatically reboots and prints a Software Upgrade Report and a new Configuration Report.

Congratulations! You have successfully upgraded your software for Xerox® ConnectKey® Technology.



Part 1

Upgrade from Software Version 071.xxx.xxx.xxxxx to 072.xxx.xxx.xxxxx

1. At the device, print a copy of the Configuration Report (see page 1 for instructions) and make sure A4 or Letter paper is loaded in at least one tray.
2. At the computer, install Pre-upgrade Patch 729999v3.dlm on your device:
 - a. Download the **WorkCentre5945-55 Software Upgrade DLMs** file. Unzip the file to your desktop, a folder called **WorkCentre5945-55-system-swXXXX** is created.
 - b. Open an Internet browser window. Enter the IP Address of the device in the **Address field** in the format **http://xx.xxx.xxx.xx** and then press **Enter** on the keyboard.
 - c. Select **General Setup** and then select **Machine Software**.
 - d. Select **Upgrades**. If **Upgrades** is disabled, select the **Enabled** box and select **Apply**. The pop-up message **Properties have been successfully modified** is displayed, select **OK**.
 - e. Select **Manual Upgrade**.
 - f. Select **Browse** and locate the **WorkCentre5945-55-system-swXXXX** folder, then select **Open**.
 - g. Select the **729999v3.dlm** file then select **Open**.
 - h. Select the **Install Software** button. The pop-up message **File has been submitted** is displayed. Select **OK**.
If you get a printed sheet with the message **This patch is not intended for this software version and was not installed**, ensure the device has software version 071.xxx.xxx.xxxxx installed.

The patch is successfully installed when the Network Controller version shows 729999v3 appended.

3. At the computer, install Software Version 072.xxx.xxx.xxxxx on your device:
 - a. Before installing the next file select **Logout** in the upper right area of the page, and then select the **Logout** button.
 - b. Select **General Setup** and then select **Machine Software**.
 - c. Select **Upgrades**. If **Upgrades** is disabled, select the **Enabled** box and select **Apply**. The pop-up message **Properties have been successfully modified** is displayed, select **OK**.
 - d. Select **Manual Upgrade**.
 - e. Select **Browse** and locate the **WorkCentre5945-55-system-swXXXX** folder, then select **Open**.
 - f. Select the **WorkCentre_5945-55-system-sw#072xxxxxxxxxxx#.DLM** file, and then select **Open**.
 - g. Select the **Install Software** button. The pop-up message **File has been submitted** is displayed. Select **OK**.

Do not navigate from the Internet browser during the file transferring process.

Software Installation will begin several minutes after the software file has been submitted to the device. Once Installation has begun all CentreWare Internet Services from the device will be lost, including the Web User Interface. The installation progress can be monitored from the device user interface. The software install process may take up to 60 minutes.

When the software upgrade is complete, the device automatically reboots and prints a Software Upgrade Report and a new Configuration Report.

Now proceed to **Part 2** to upgrade the device to Software Version 073.xxx.xxx.xxxxx.

Part 2

Upgrade from Software Version 072.xxx.xxx.xxxxx to 073.xxx.xxx.xxxxx

1. At the device, print a copy of the Configuration Report (see page 1 for instructions) and make sure A4 or Letter paper is loaded in at least one tray.
2. At the computer, install Pre-upgrade Patch 788101vX.dlm on your device:
 - a. Download the **WorkCentre5945-55 Software Upgrade DLMs** file. Unzip the file to your desktop, a folder called **WorkCentre5945-55-system-swXXXX** is created. (Skip this step if continuing from **Part 1**.)
 - b. Open an Internet browser window. Enter the IP Address of the device in the **Address** field in the format **http://xx.xxx.xxx.xx** and then press **Enter** on the keyboard.
 - c. Select **General Setup** and then select **Software Upgrade**.
 - If **Security Installation Policy: Not Allowed (Device and Remote Methods)** is shown, the Software Upgrades option is disabled. Select the **Allow Upgrade** button. The pop-up message **Properties have been successfully modified** is displayed, select **OK**.
 - Select the **Security Installation Policy:** link and enable all the options. This ensures all the software upgrade functions are accessible. Select **Apply**. The pop-up message **Properties have been successfully modified** is displayed, select **OK**.
 - Select **Software Upgrade** from the menu to return to the Software Upgrade page.
 - d. Select **Manual Upgrade**.
 - e. Select **Browse** and locate the **WorkCentre5945-55-system-swXXXX** folder, then select **Open**.
 - f. Select the **788101vX.dlm** file then select **Open**.
 - g. Select the **Install Software** button. The pop-up message **File has been submitted** is displayed. Select **OK**.
If you get a printed sheet with the message **This patch is not intended for this software version and was not installed**, ensure the device has software version 072.xxx.xxx.xxxxx installed.

The patch is successfully installed when the Network Controller version shows 788101vX appended.

3. At the computer, install Software Version 073.xxx.xxx.xxxxx on your device:
 - a. Before installing the next file select **Logout** in the upper right area of the page, and then select the **Logout** button.
 - b. Select **General Setup** and then select **Software Upgrade**.
 - If **Security Installation Policy: Not Allowed (Device and Remote Methods)** is shown, the Software Upgrades option is disabled. Select the **Allow Upgrade** button. The pop-up message **Properties have been successfully modified** is displayed, select **OK**.
 - Select the **Security Installation Policy:** link and enable all the options. This ensures all the software upgrade functions are accessible. Select **Apply**. The pop-up message **Properties have been successfully modified** is displayed, select **OK**.
 - Select **Software Upgrade** from the menu to return to the Software Upgrade page.
 - c. Select **Manual Upgrade**.
 - d. Select **Browse** and locate the **WorkCentre5945-55-system-swXXXX** folder, then select **Open**.
 - e. Select the **WorkCentre_5945-55-system-sw#073xxxxxxxxxxx#.DLM** file, and then select **Open**.
 - f. Select the **Install Software** button. The pop-up message **File has been submitted** is displayed. Select **OK**.

Do not navigate from the Internet browser during the file transferring process.

Software Installation will begin several minutes after the software file has been submitted to the device. Once Installation has begun all CentreWare Internet Services from the device will be lost, including the Web User Interface. The installation progress can be monitored from the device user interface. The software install process may take up to 60 minutes.

When the software upgrade is complete, the device automatically reboots and prints a Software Upgrade Report and a new Configuration Report.

Congratulations! You have successfully upgraded your software for Xerox® ConnectKey® Technology.

Part 3

Upgrade from 073.xxx.xxx.xxxxx to a later version of Software for Xerox® ConnectKey® Technology

1. At the device, print a copy of the Configuration Report (see page 1 for instructions) and make sure A4 or Letter paper is loaded in at least one tray.
2. At the computer, perform the Software Installation for your device:
 - a. Download the **WorkCentre5945-55 Software Upgrade DLMs** file. Unzip the file to your desktop, a folder called **WorkCentre5945-55-system-swXXXX** is created.
 - b. Check the software version is later than the software version currently installed on your device:
 - Open the **WorkCentre5945-55-system-swXXXX** folder.
 - Compare the last 6 digits of the software DLM file with the software version shown on the Configuration Report printed on your device.
The software DLM file number must be **higher** than the software version installed on your device for a successful upgrade to occur.
 - c. Open an Internet browser window. Enter the IP Address of the device in the **Address** field in the format **http://xx.xxx.xxx.xx** and then press **Enter** on the keyboard.
 - d. Select **General Setup** and then select **Software Upgrade**.
 - If **Security Installation Policy: Not Allowed (Device and Remote Methods)** is shown, the Software Upgrades option is disabled. Select the **Allow Upgrade** button. The pop-up message **Properties have been successfully modified** is displayed, select **OK**.
 - Select the **Security Installation Policy:** link and enable all the options. This ensures all the software upgrade functions are accessible. Select **Apply**. The pop-up message **Properties have been successfully modified** is displayed, select **OK**.
 - Select **Software Upgrade** from the menu to return to the Software Upgrade page.
 - e. Select **Manual Upgrade**.
 - f. Select **Browse** and locate the **WorkCentre5945-55-system-swXXXX** folder, then select **Open**.
 - g. Select the **WorkCentre_5945-55-systemsw#075xxxxxxxxxxx#.DLM** file, and then select **Open**.
 - h. Select the **Install Software** button. The pop-up message **File has been submitted** is displayed. Select **OK**.

Do not navigate from the Internet browser during the file transferring process.

Software Installation will begin several minutes after the software file has been submitted to the device. Once Installation has begun all CentreWare Internet Services from the device will be lost, including the Web User Interface. The installation progress can be monitored from the device user interface. The software install process may take up to 60 minutes.

When the software upgrade is complete, the device automatically reboots and prints a Software Upgrade Report and a new Configuration Report.

Congratulations! You have successfully upgraded your software for Xerox® ConnectKey® Technology.

