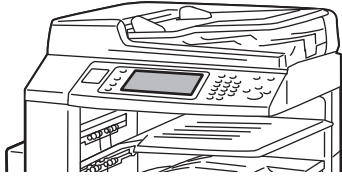
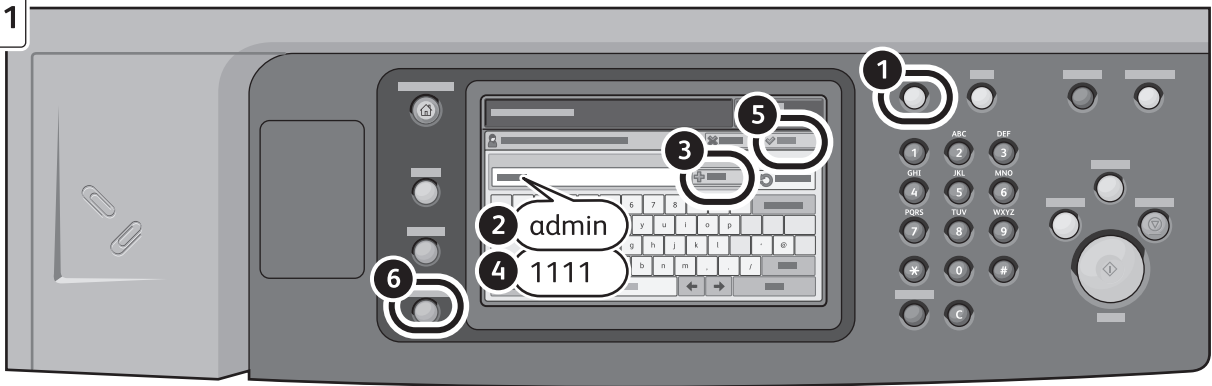


7

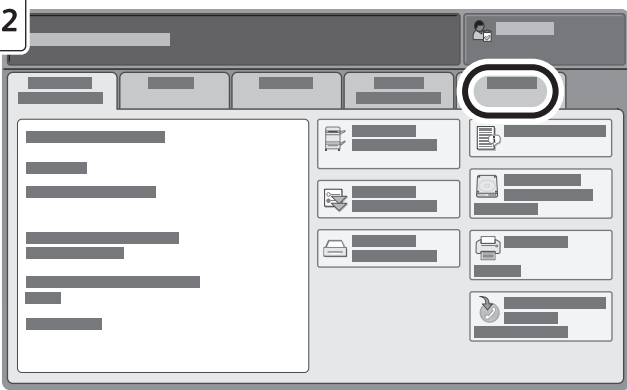


7.1

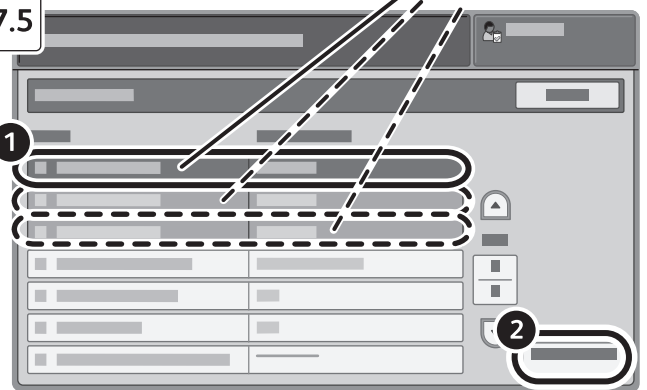


Tray 1
Magasin 1
Vassoio 1
Behälter 1
Bandeja 1

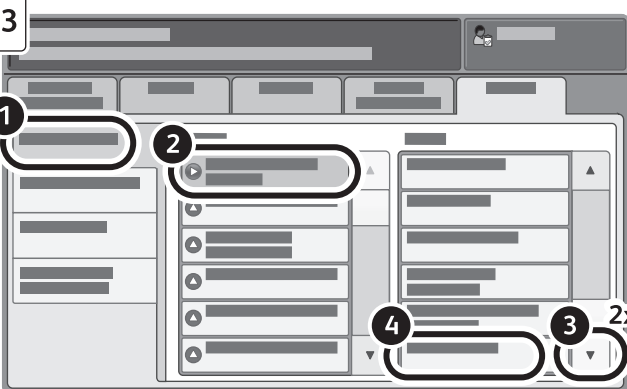
7.2



7.5



7.3



7.6



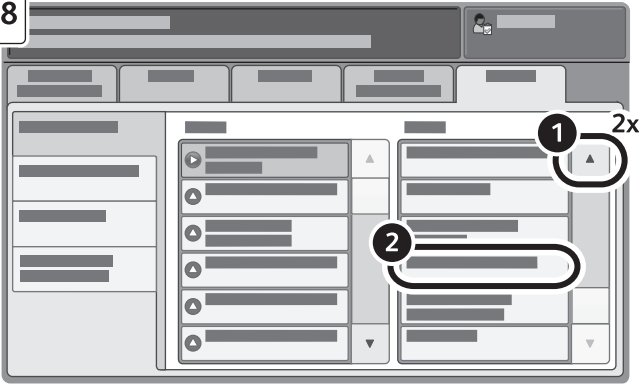
7.4



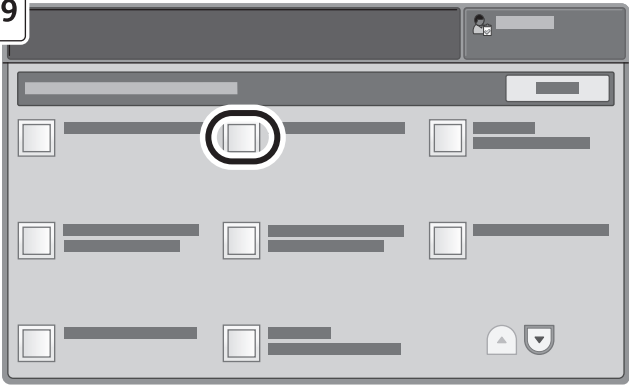
7.7



7.8



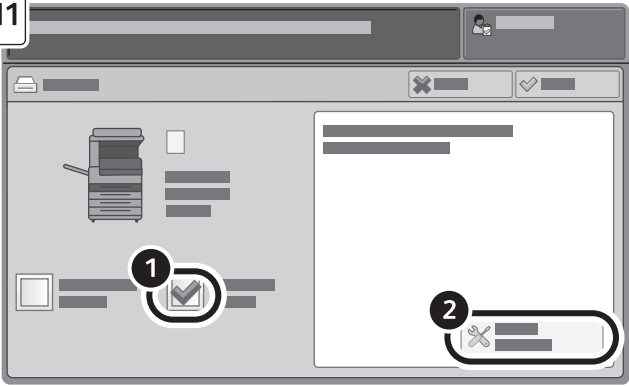
7.9



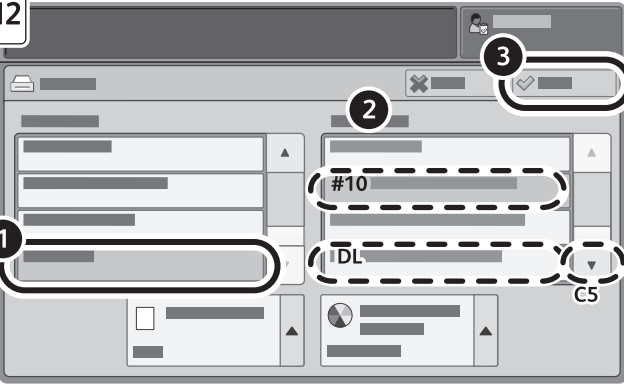
7.10



7.11



7.12



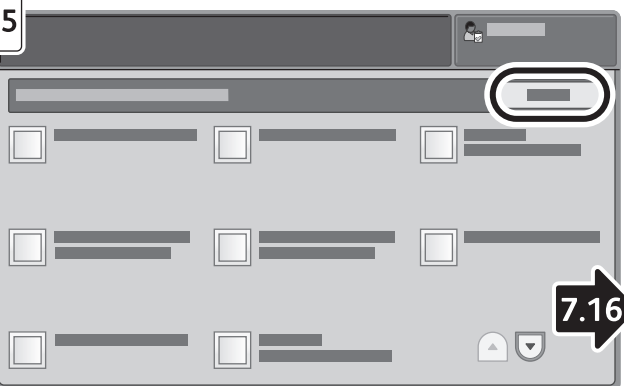
7.13



7.14



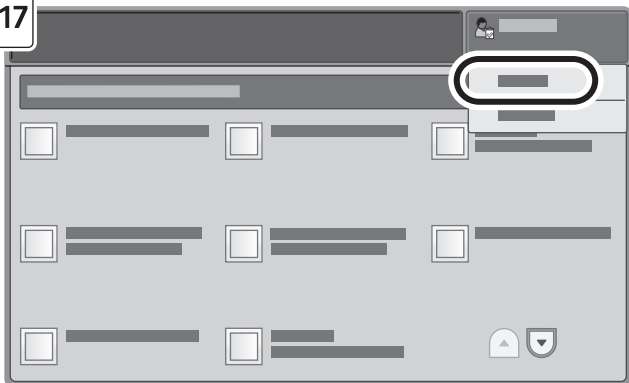
7.15



7.16



7.17



7.18



For more information, see the *User Guide*.
Pour plus d'informations, consulter le *Guide de l'utilisateur*.
Per maggiori informazioni, vedere la *Guida per l'utente*.
Weitere Informationen sind im *Benutzerhandbuch*.
Si desea más información, consulte la *Guía del usuario*.
Para obter mais informações, consulte o *Guia do Usuário*.

www.xerox.com/office/WC7120docs
www.xerox.com/office/WC53XXdocs