

Quick Start Guide

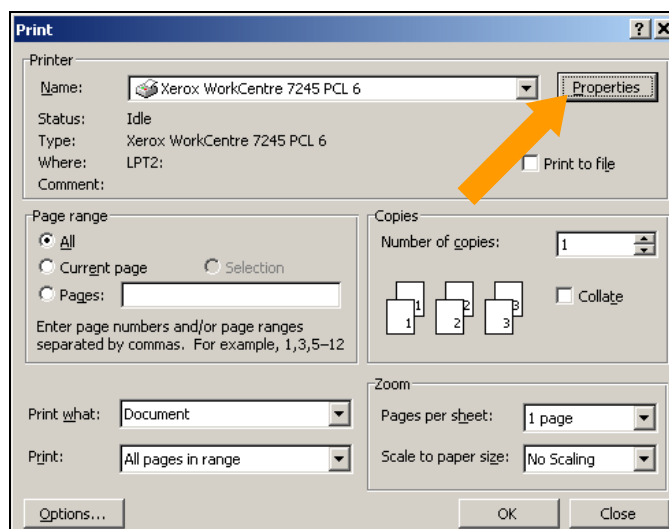
**Booklet Creation:
Using the PCL Driver**



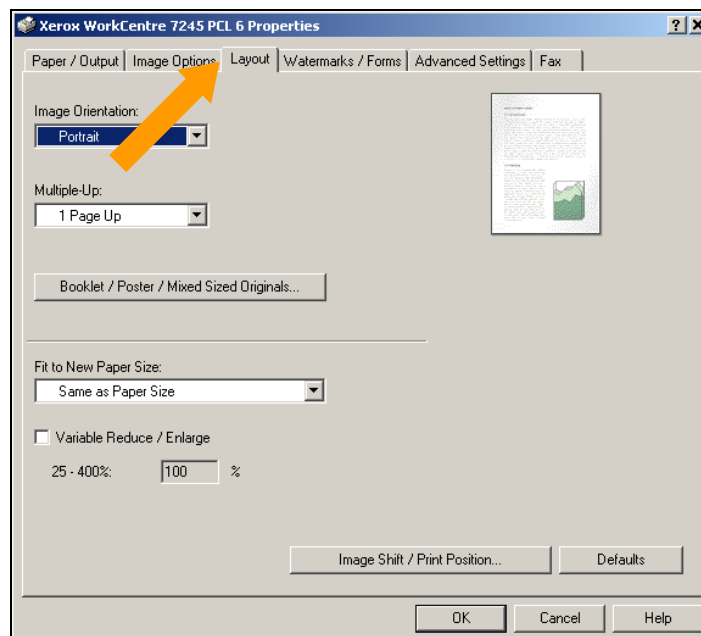
WorkCentre 7228/7235/7245

Creating a Booklet Using the PCL Driver

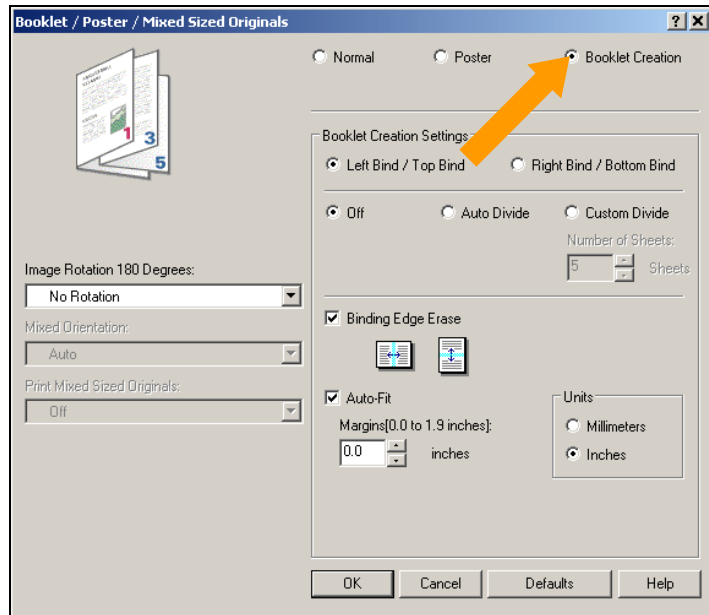
1. At your workstation, click on the *Print* option to print your job.
2. Click on the *Properties* button.



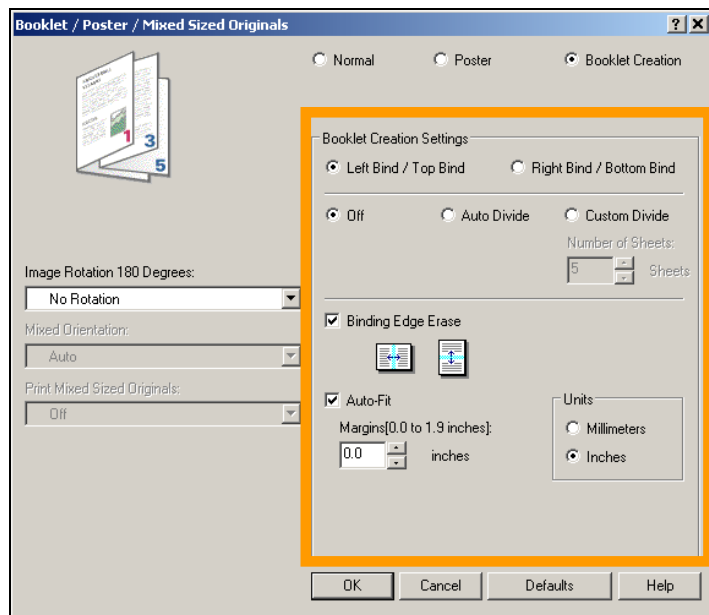
3. Click on the *Layout* tab.



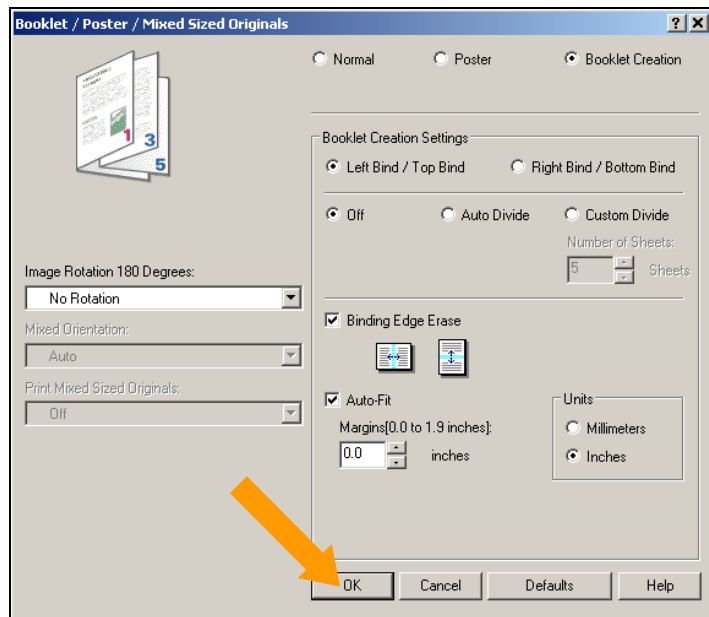
4. Click on the *Booklet Creation* option.



5. Choose the appropriate *Booklet Creation Settings*.



6. Click the **OK** button.



7. Enter the required number of copies, then click on the **OK** button.

