

# XEROX®

## Faxing from the WorkCentre® 7328/7335/7345



### Faxing Options:

#### Lighten/Darken

Use the arrow buttons on the *Fax* tab to lighten or darken the faxed image.

#### 2 Sided Scanning

Specify your original documents as *1 Sided*, *2 Sided*, or *2 Sided(Rotate Side 2)*. When you choose a *2 Sided* option, you can also select the *First Page 1 Sided* option, if required.

#### Original Type

Specify your original documents as *Photo & Text*, *Text*, or *Photo*.

#### Resolution

Specify your scanned resolution as *Standard*, *Fine*, *Superfine(400dpi)*, or *Superfine(600dpi)*.

#### Layout Adjustment

The *Layout Adjustment* tab options allow you to access the *Original Size*, *Book Faxing*, and *Reduce/Enlarge* settings.

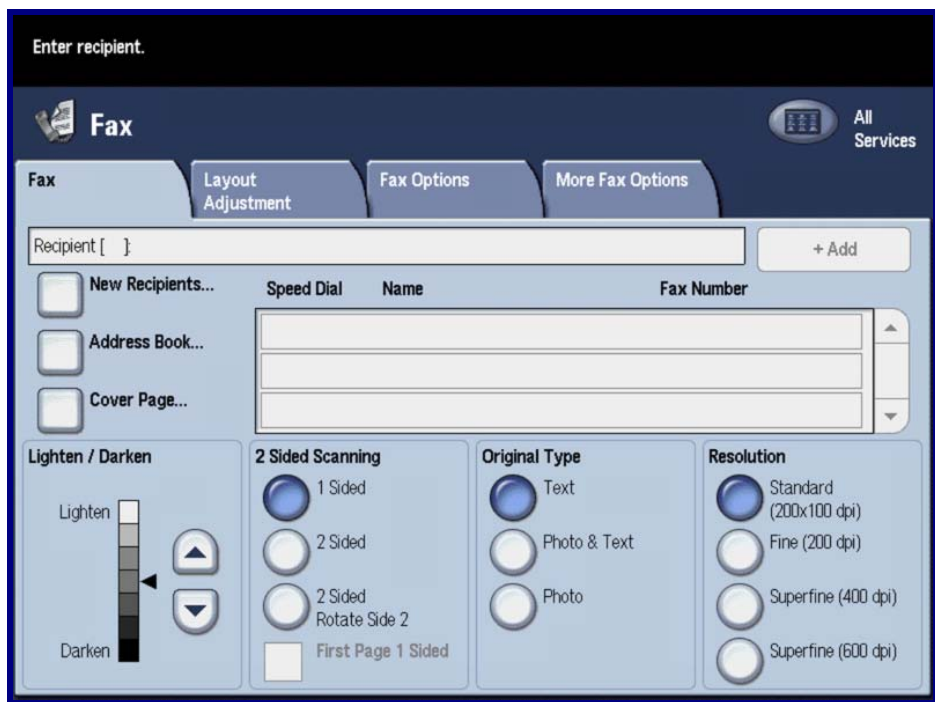
#### Fax Options

The *Fax Options* tab options allow you to access the *Confirmation Options*, *Starting Rate*, *Priority Send/Delay Start*, *Transmission Header Text*, *Recipient Print Sets*, *Multiple-Up*, *Remote Mailbox*, and *F Code* settings.

#### More Fax Options

The *More Fax Options* tab options allow you to access the *Remote Polling*, *Store for Polling*, and *On-hook (Manual Send/Receive)* settings.

### Simple Faxing:



1. **Load** the document into the Document Handler.
2. Touch the **Services** button on the Control Panel.
3. Touch the **Fax** icon on the Touch Screen.
4. Use the Number Keypad to enter the **Recipient** Fax Number.
5. Select the appropriate **Settings** on the Touch Screen.
6. Press the **Start** button on the Control Panel.