

XEROX®

Network Scanning at the WorkCentre® 7328/7335/7345



Scanning Options:

Scanning Color

The *Auto Detect* option allows the machine to determine the color content of your document. The *Color* option enables the machine to use all four toner colors. The *Grayscale* option enables the machine to print only black and gray tones. The *Black & White* option enables the machine to use only black toner.

2 Sided Scanning

You can specify your original documents as *1 Sided*, *2 Sided*, or *2 Sided(Rotate Side 2)*.

Original Type

You can specify your original documents as *Photo & Text*, *Text*, or *Photo*.

Scan Presets

You can specify your scanning presets for *Sharing & Printing*, for *Archival Record*, for *OCR*, for *High Quality Printing*, *Simple Scan*, or *Custom*.

Advanced Settings

The *Advanced Settings* tab options allow you to access the *Image Options*, *Image Enhancement*, *Resolution*, *Quality/File Size*, *Photographs*, and *Shadow Suppression* settings.

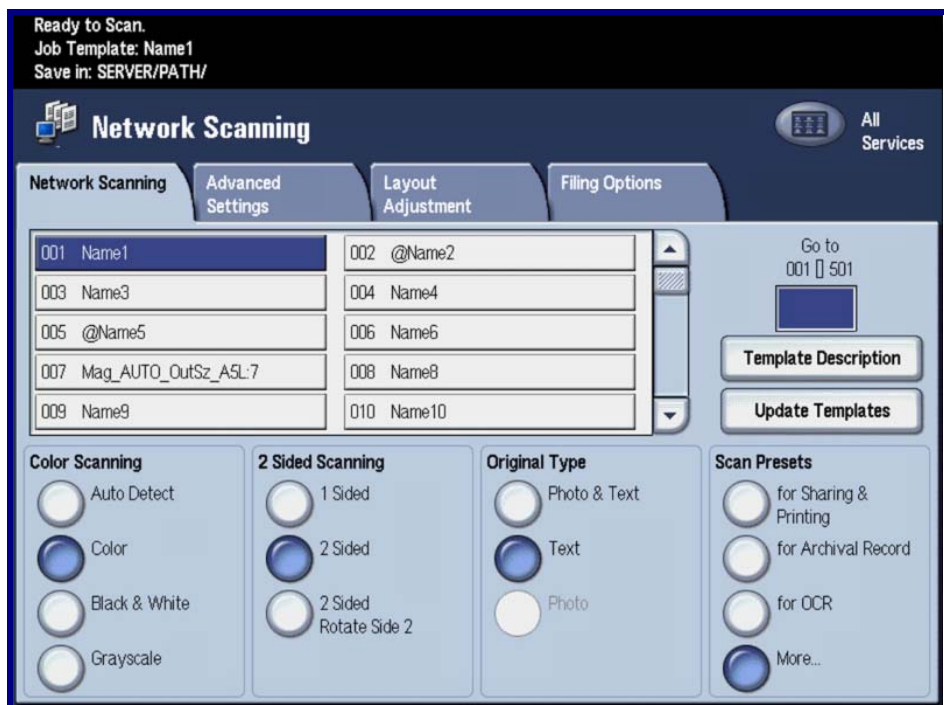
Layout Adjustment

The *Layout Adjustment* tab options allow you to access the *Original Orientation*, *Original Size*, *Edge Erase*, *Book Scanning*, and *Reduce/Enlarge* settings.

Filing Options

The *Filing Options* tab options allow you to access the *File Name*, *File Format*, *Meta Data*, *File Name Conflict*, *Password*, and *Login Name* settings.

Simple Network Scanning:



1. Load the document into the Document Handler.
2. Touch the **Services** button on the Control Panel.
3. Touch the **Network Scanning** icon.
4. Select the appropriate **Template** on the Touch Screen.
5. Select the appropriate **Settings** on the Touch Screen.
6. Press the **Start** button on the Control Panel.