

**XEROX**  
**WorkCentre Pro 423/428**  
**User Guide (PostScript® Kit)**

708P86639



THE DOCUMENT COMPANY  
**XEROX®**



Prepared and translated by:  
The Document Company Xerox  
GKLS European Operations  
Bessemer Road  
Welwyn Garden City  
Hertfordshire  
AL7 1HE  
ENGLAND

©2001 by Xerox Corporation. All rights reserved.

The AppleTalk protocols and computer programs are licensed from Apple Computer, Inc.

AppleTalk, EtherTalk, Apple and Macintosh are trademarks of Apple Computer, Inc.

TrueType is a registered trademark of Apple Computer, Inc.

Adobe, Adobe Type Connection, Adobe Type Manager, Acrobat, PostScript 3, and the PostScript logo are trademarks of Adobe Systems Incorporated.

Microsoft, Windows and Windows NT are either registered trademarks or trademarks of Microsoft Corporation in the United States and/or other countries.

UNIX is a trademark of X/Open Company Ltd.

All product/brand names are trademarks or registered trademarks of the respective holders.

Permission has been obtained from Microsoft Corporation for use of software screen shots.

Copyright protection claimed includes all forms and matters of copyrighted material and information now allowed by statutory or judicial law or hereinafter granted, including without limitations, material generated from the software programs which are displayed on the screen, such as icons, screen displays, looks etc.

Xerox®, The Document Company®, the digital X® and all Xerox products mentioned in this publication are trademarks of Xerox Corporation. Product names and trademarks of other companies are hereby acknowledged.

# Table of Contents

<b>1</b>	<b>Setting Up the postscript Kit .....</b>	<b>1-1</b>
	Checking the Contents .....	1-2
	Safety Notes .....	1-2
	Installing the postscript kit .....	1-3
<b>2</b>	<b>Operation at the Printer .....</b>	<b>2-1</b>
	Printer Settings .....	2-2
	Settings in Menus .....	2-2
	Setting Items .....	2-4
	Port Status .....	2-4
	Print Mode .....	2-4
	Allocate Memory .....	2-5
	Report/List Print .....	2-5
<b>3</b>	<b>Operation with Windows 95/98/Me .....</b>	<b>3-1</b>
	About the Software .....	3-2
	Bundled Software .....	3-2
	Hardware/Software Requirements .....	3-2
	Computer System .....	3-2
	Basic Software .....	3-2
	Installing the AdobePS Printer Driver .....	3-3
	Installation Procedure .....	3-3
	If you click Decline in the License Agreement .....	3-11
	Printer Driver Properties .....	3-12
	Configuration Tab Settings .....	3-12
	Settings .....	3-13
	Options Tab Settings .....	3-15
	Settings .....	3-15
	Output Settings Tab Settings .....	3-16
	Output Paper .....	3-16
	Secure Print/Sample Print .....	3-16
	Display warning message about Output Settings .....	3-17
	How to Use Help .....	3-18
<b>4</b>	<b>Operation with Windows NT 4.0 .....</b>	<b>4-1</b>
	About the Software .....	4-2
	Bundled Software .....	4-2
	Hardware/Software Requirements .....	4-2
	Computer System .....	4-2
	Basic Software .....	4-2
	Installing the AdobePS Printer Driver .....	4-3
	Installation Procedure .....	4-3
	If you click Decline in the License Agreement .....	4-12
	Device Options and Print Settings .....	4-13
	Device Settings Tab Settings .....	4-13
	Settings .....	4-13
	Configuration Tab Settings .....	4-14
	Select Job Owner .....	4-14
	Secure Print/Sample Print .....	4-14
	Advanced Tab Settings .....	4-15

	Settings .....	4-15
	Output Settings Tab Settings.....	4-17
	Secure Print/Sample Print.....	4-17
	Enable metafile spooling.....	4-18
	How to Use Help.....	4-19
<b>5</b>	<b>Operation with Windows 2000.....</b>	<b>5-1</b>
	About the Software .....	5-2
	Bundled Software .....	5-2
	Hardware/Software Requirements .....	5-2
	Computer System .....	5-2
	Basic Software .....	5-2
	Installing the Printer Driver .....	5-3
	Installation Procedure.....	5-3
	Device Options and Print Settings.....	5-14
	Device Settings Tab Settings .....	5-14
	Settings .....	5-15
	Configuration Tab Settings.....	5-15
	Specify Job Owner .....	5-15
	Secure Print/Sample Print.....	5-16
	Advanced Options Dialog Box Settings.....	5-16
	Settings .....	5-16
	Output Settings Tab Settings.....	5-18
	Secure Print/Sample Print.....	5-18
	How to Use Help.....	5-20
<b>6</b>	<b>Operation on Macintosh Computers .....</b>	<b>6-1</b>
	About the Software .....	6-2
	Bundled Software .....	6-2
	Hardware/Software Requirements .....	6-2
	Computer System .....	6-2
	Installing the AdobePS Printer Driver .....	6-3
	Installation Procedure.....	6-3
	Setting the Printer Driver .....	6-5
	Options .....	6-7
	Configure Settings.....	6-7
	Settings .....	6-7
	Printer Specific Options Settings.....	6-8
	Settings .....	6-8
	Installing the Screen Fonts .....	6-11
	Xerox PS Utility.....	6-13
	Installing the Xerox PS Utility .....	6-13
	Uninstalling the Xerox PS Utility .....	6-13
	Using the Xerox PS Utility .....	6-14
	Activating the Xerox PS Utility.....	6-14
	Specifying the Printer Settings .....	6-14
<b>A</b>	<b>Cautions and Limitations 7-1</b>	
	About the driver.....	7-1
	Installing this PostScript kit .....	7-1
	Troubleshooting .....	7-1
	Print operation .....	7-1

# **1    *Setting Up the postscript Kit***

The following information can be found in this chapter:

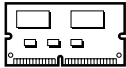
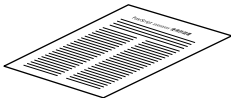


- Checking the Contents
- Safety Notes
- Installing the postscript Kit

## Checking the Contents

---

The devices and components bundled with the present product are described below.

If any of the following are missing, contact your local Xerox office.

		<b>License Agreement</b>
<b>Postscript Program ROM</b> This ROM makes postscript printing possible with the printer.		<b>postscript Logo Seal</b> This seal accompanies printers compatible with postscript.
	<b>1 postscript Driver Library CD-ROM</b> Includes the postscript drivers and screen fonts.	

## Safety Notes

---

Be sure to observe the following when handling the kit.

Be sure to read "User Guide (Copier), Safety Notes" before you use the printer.

---

**WARNING: Never open or remove machine covers that are secured with screws unless specifically instructed in the User Guide. High-voltage components can cause electrical shocks.**

---

---

**WARNING: Do not try to alter the machine configuration or modify any parts. Unauthorized modifications can cause fire.**

---

---

**CAUTION: Be sure to switch off the machine when installing the device. Installing the device when power is switched on can cause damage to the option and machine due to static electricity.**

---

- Do not touch the ROM terminals.
- Do not bend or scratch the ROM.

## Installing the postscript kit

This section describes how to install the postscript program ROM of the postscript kit into the printer.

You can use the printer as a postscript compatible printer by installing the postscript program ROM.

Follow the directions below to install the postscript program ROM.

Ensure that the optional 64MB SDRAM for printer has been installed before installing the PostScript Kit.

Refer to the Printer Settings List to check whether the optional 64MB SDRAM module is installed in your machine. See "User Guide (Printer)" for details of the Printer Settings List.

You are recommended to install the optional printer HDD Kit to optimize the PostScript features.

1. Make sure that the printer is off, and unplug the printer from the outlet.

---

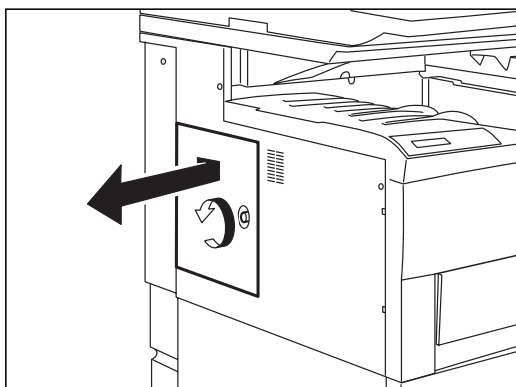
**CAUTION: Be sure to switch off the machine when installing the device. Installing the device when power is switched on can cause damage to the option and machine due to static electricity.**

---

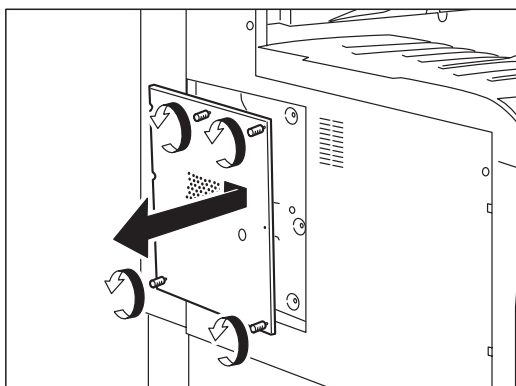
When the power is off, all print data of the printer as well as print data stored in the printer built-in memory is discarded. When turning off the power, make sure that "Ready to print" is displayed.

When turning off the power, make sure that the Job in Memory indicator lamp is off. Otherwise, data stored in the memory may be discarded.

2. Remove the cover screw on the left side of the printer and remove the cover.



3. While holding the metal plate, loosen the 4 screws; first the lower 2, then the upper 2, to remove the metal plate.



---

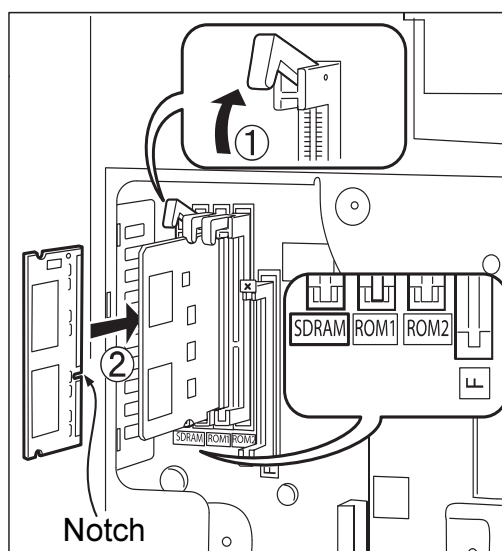
**NOTE:** The screws cannot be removed from the metal plate.

---

4. Open the clip on top of the ROM2 slot (1). Hold the postscript program ROM so that the notch is located as shown in the diagram and insert it directly into the ROM2 slot (2).

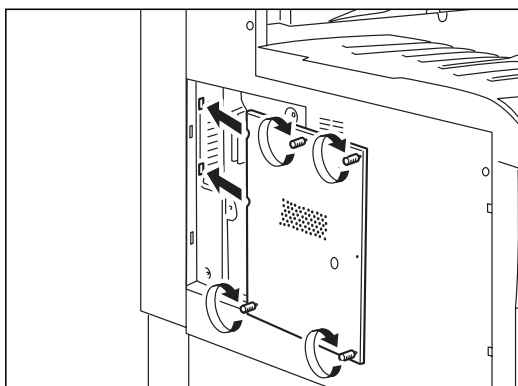
Correctly insert the postscript program ROM into the ROM2 slot and close the clip to fasten the ROM.

Securely push in the postscript program ROM.

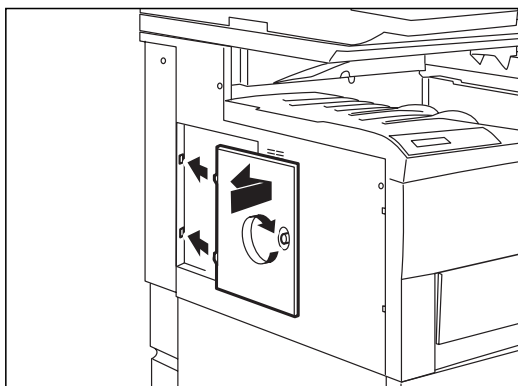




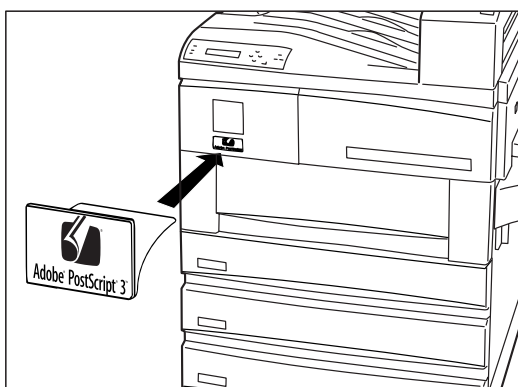
5. Insert the 2 metal-plate notches into the printer and tighten the 4 screws to fasten.



6. Insert the 2 cover notches into the printer and tighten the screw to fasten.



7. Affix the postscript 3 Logo seal to the printer as shown in the figure.



8. Plug in the printer and turn it on.
9. Print the Printer Settings List to confirm that postscript appears in Options of the System Settings.  
See "User Guide (Printer)"



## **2    *Operation at the Printer***

The following information can be found in this chapter:

- Printer Settings
- Settings in Menus
- Setting Items

## Printer Settings

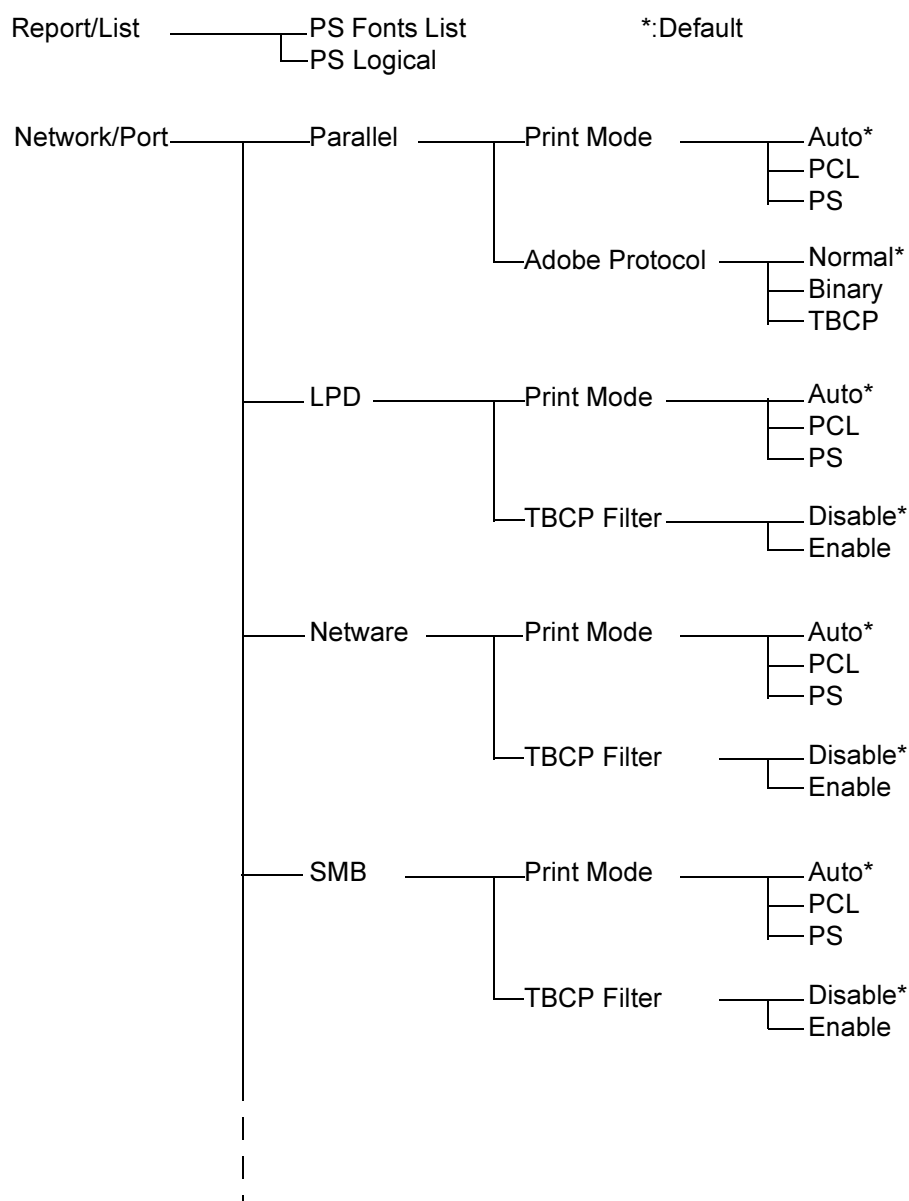
This section describes how to set printer settings when using the PostScript language.

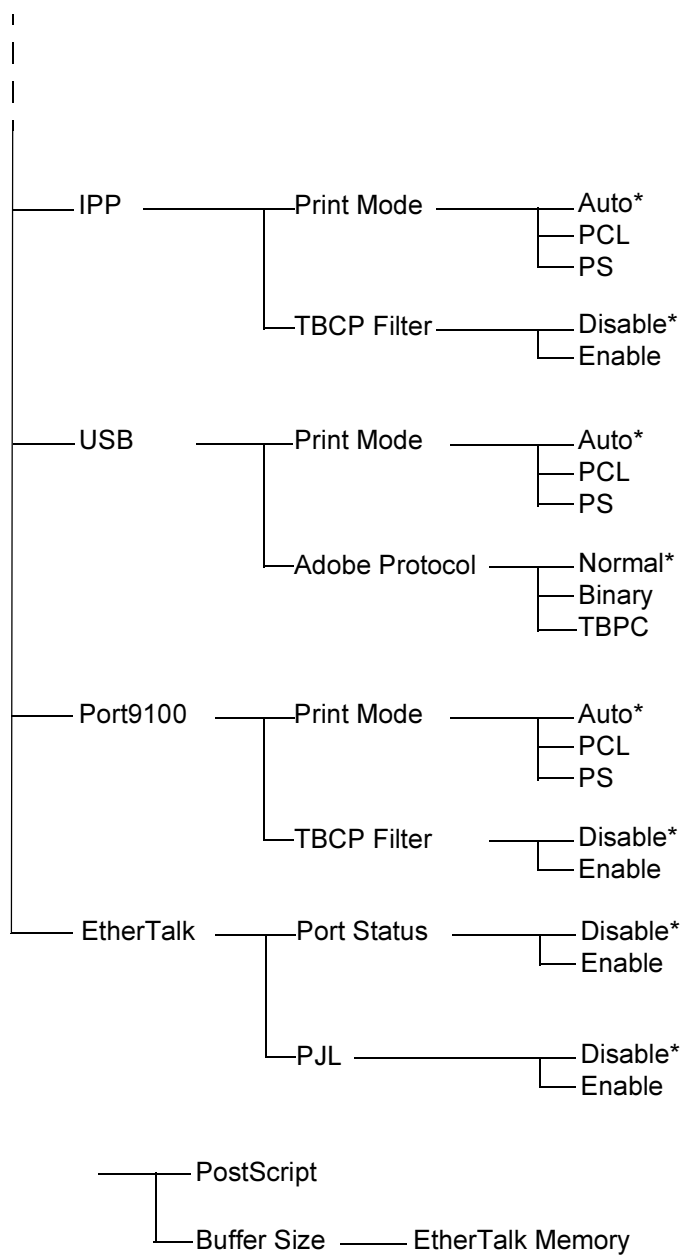
## Settings in Menus

When the PostScript kit is installed, the following items can be set by the common menu on the printer control panel.

See “Setting Items” on page 2-4 for details.

You can also adjust the settings at CentreWare Internet Services. See *“User Guide (Printer)”* for details.





## Setting Items

---

Make the following settings from the printer control panel according to your operating environment.

- Port Status - Allows you to specify what port to use at startup.
- Print Mode - Allows you to make printer port settings and set the necessary conditions for communication.
- Allocate Memory - Allows you to change the amount of memory used by PostScript.

See “*User Guide (Printer)*” for details about how to make each setting. You can also make settings at CentreWare Internet Services. See “*User Guide (Printer)*” for details.

### Port Status

---

**Parallel/LPD/NetWare/SMB/IPP/USB/Port9100/EtherTalk** - Activate the port using PostScript language.

**NOTE:** USB, IPP, and Port9100 can be used on Windows 2000 only.

---

### Print Mode

---

Allows you to set the print mode specifications of each port to enable the use of the PostScript language. With a parallel and USB interface, Print Mode allows you to set the Adobe Communication Protocol.

**Print Mode for Parallel/LPD/NetWare/SMB/IPP/USB/Port9100 (Default: Auto)** - Select Auto to use the PostScript printer on the Windows operating systems.

**Adobe Communication Protocol for Parallel/USB (Default: Normal)** - Specifies PostScript Communication Protocol for parallel interface or USB.

<b>Normal</b>	Used when the communication protocol is in ASCII format.
<b>Binary</b>	Used when the communication protocol is in binary format. Compared to Normal, print processing might be faster, depending on the type of data.
<b>TBCP</b>	Used when the communication protocol supports both ASCII and binary data to switch between them according to the specified control code.

In most circumstances, you should use the default, Normal.

Make settings according to the data format that the printer driver installed on the computer.

**The TBCP filter of LPD/NetWare/SMB/IPP/Port9100 (Default: Disable)** - When the communication protocol supports both ASCII and binary data, select Enable so that the filter can switch between them according to specific control codes.

**EtherTalk PjL (Default: Enable)** - Specifies whether to use the PjL command.

The PjL command is effective regardless of what printer language is being used.

## Allocate Memory

---

**PS Memory (Default: 8 MB)** - Sets the amount of memory used by PostScript. Increasing PS memory speeds up print processing and reduces occurrences of PostScript errors caused by insufficient memory. Set the value in 0.25MB increments from 4.5 to 32.00 MB. The maximum setting varies according to the amount of free memory.

**EtherTalk Buffer Size (Default: 256 KB)** - Sets the amount of memory used by EtherTalk. Increasing the buffer size frees EtherTalk clients more quickly. Set the value in 32KB increments between 64 and 1024 KB. The maximum setting varies according to the amount of free memory.

## Report/List Print

---

**PostScript Fonts List** - Allows you to confirm what PostScript fonts can be printed with the machine.

**PostScript Logical Printer List** - Allows you to confirm what PostScript logical printers are registered.

See *"User Guide (Printer)"* for details about how to print reports and lists.

When printing with UNIX, a logical printer is created. Consult UNIX documentation for details about how to create a logical printer.

Then use the CentreWare Internet Services to set the PostScript logical printer on the machine. For details on the setting items, refer to the online Help of CentreWare Internet Services.

For details on how to use CentreWare Internet Services see *"User Guide (Printer)"*.

See the *"Network Print Environment User Guide"* (Network PDF) on the Documentation CD Rom for details on using UNIX to print from the machine.





# 3 *Operation with Windows 95/98/Me*

The following information can be found in this chapter:

- About the Software
  - Bundled Software
  - Hardware/Software Requirements
- Installing the AdobePS Printer Driver
  - Installation Procedure
- Printer Driver Properties
  - Configuration Tab Settings
  - Options Tab Settings
  - Output Settings Tab Settings
- How to Use Help

## About the Software

---

This section describes the software bundled with the PostScript Driver Library CD-ROM for Windows 95, Windows 98, and Windows Me.

## Bundled Software

---

The following items are included in the “English\WCP423(or WCP428 depending on your printer model)\Win9x\_Me” folder and “English\Utility\Win9x\_Me” folder in the enclosed CD-ROM. Also, be sure to read “Readme.txt” containing cautionary notes about how to use the printer driver.

**AdobePS Printer Driver (ver.4.4.x) and PPD files** - Adobe PostScript driver and PPD files (for Windows 95/98/Me).

**ATM (Adobe Type Manager)(ver.4.0)** - Helps you install typefaces, activate and manage your fonts.

**Adobe Screen Fonts (TrueType/PostScript)** - Includes 136 screen fonts (19 TrueType fonts and 117 PostScript fonts), which are compatible with the printer fonts. ATM is used to install the PostScript screen fonts. When using these fonts to print, it is recommended that you use the Adobe PostScript (4.4.x) printer driver.

**Adobe Acrobat Reader** - Allows you to view and print PDF files on all major computing platforms.

## Hardware/Software Requirements

---

The minimum system requirements for the Windows 95/Windows 98/Windows Me printer driver are described below.

### Computer System

---

- i386, i486, or Pentium processor-based personal computer (i486 or Pentium processor recommended)
- 8 MBytes of available RAM (16 MBytes recommended)
- 6 MBytes of available hard-disk space (8 MBytes required for full driver installation)

### Basic Software

---

- Windows 95, Windows 98 or Windows Me

# Installing the AdobePS Printer Driver

Install AdobePS 4.4.x printer driver onto Windows 95, Windows 98 or Windows Me by following the procedure below.

This section describes how to install the printer driver for Windows 98, as an example.

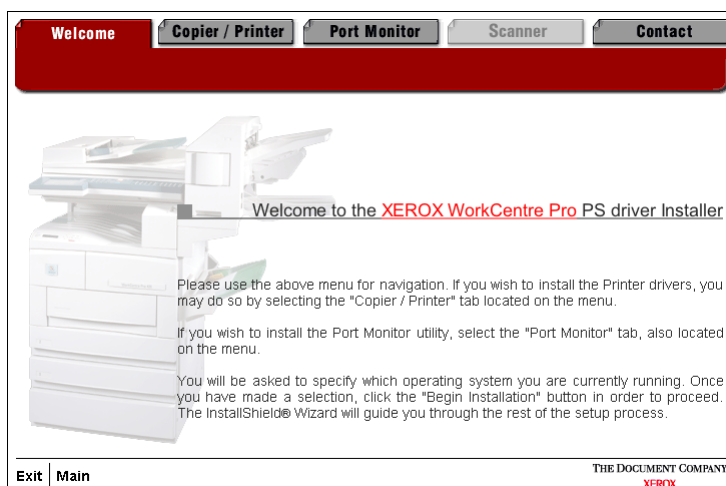
It is possible to cancel installation of the printer driver by clicking Cancel in the dialog box displayed during installation. You can also click Back to ignore the settings in that dialog box and return to the previous dialog box.

## Installation Procedure

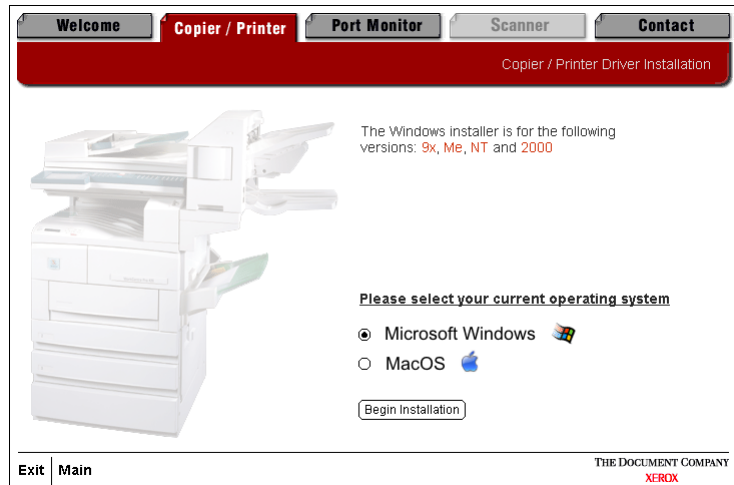
1. Start Windows 98.
2. Insert the PostScript driver CD in the CD-ROM drive.  
The Install program should run automatically.



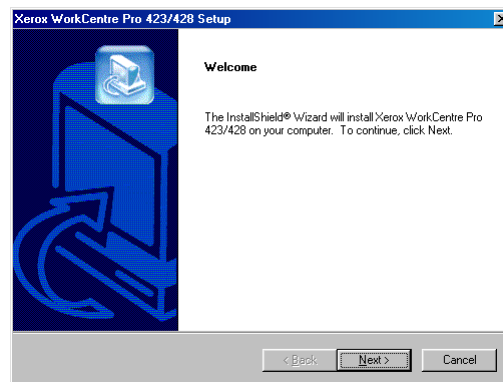
3. Click Driver Installation.  
The Welcome screen for the PostScript driver installation is displayed.
4. Click the Copier/Printer tab.



5. Click Begin Installation on the Copier/Printer tab.

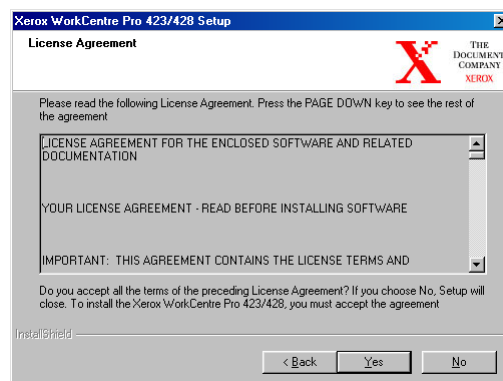


6. Click [Next] on the Welcome screen.

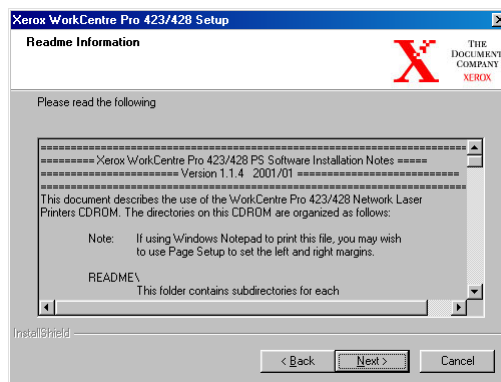


7. Read the License Agreement and click [Yes] to accept the agreement.

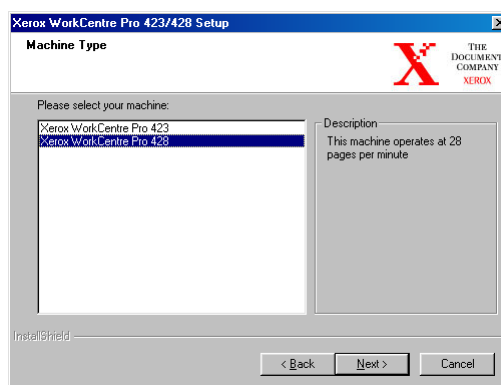
**NOTE:** If you click [No] the installation will terminate.



8. Read the readme information and click **[Next]**.

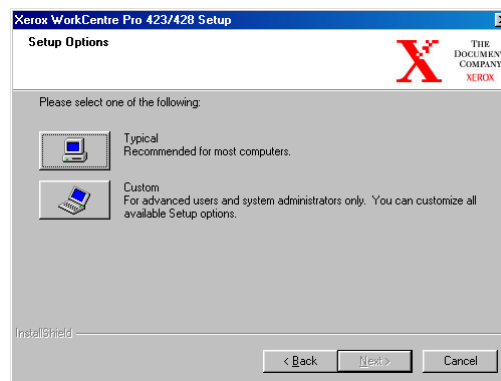


9. Highlight the printer that you want to install and click **[Next]**.

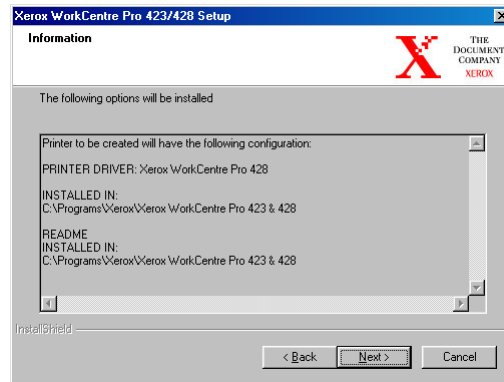


10. Click the Setup button that you want to use to install the printer.

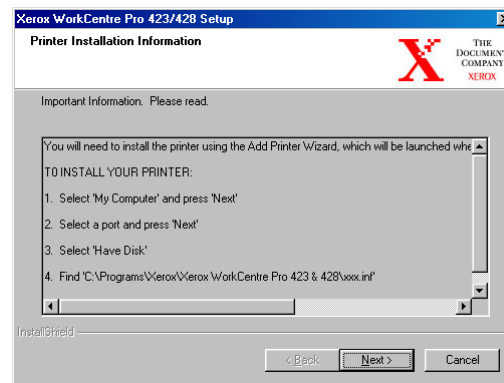
**NOTE:** It is recommended that you use the Typical button unless you are an advanced user wanting to customize the installation.



11. Check the information screen and click **[Next]**.

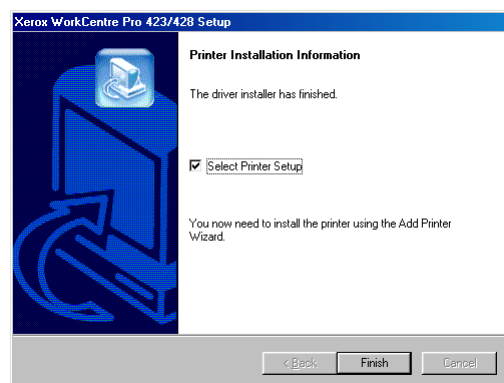


12. Read the Printer Installation Information screen and click **[Next]**.

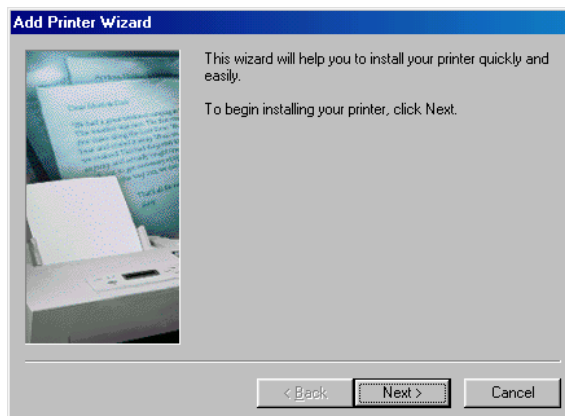


13. Make sure that the Select Printer Setup box is checked and click **[Finish]** to launch the Add Printer Wizard and complete the installation of the printer.

**NOTE:** If you want to complete the installation of the printer later, uncheck the Select Printer Setup box before clicking **[Finish]**.



14. Click **[Next]** to start the wizard.

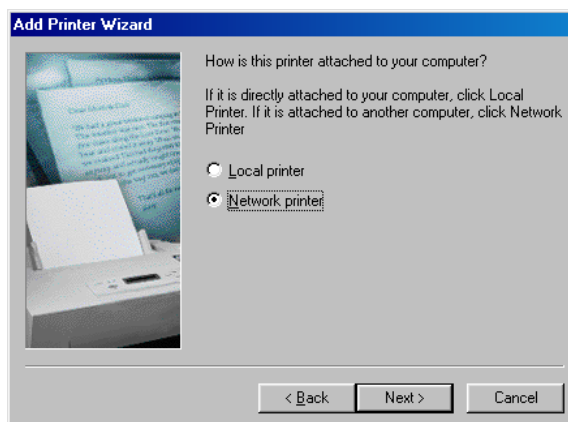


15. Select how the printer is connected to the computer.

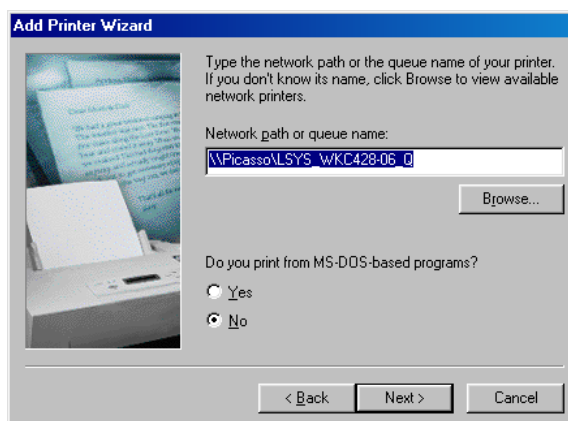
Select Local printer when the printer is connected directly to the computer. Otherwise, select Network printer.

**For a network connected printer:**

- i. Click the **[Network printer]** radio button then click **[Next]**.

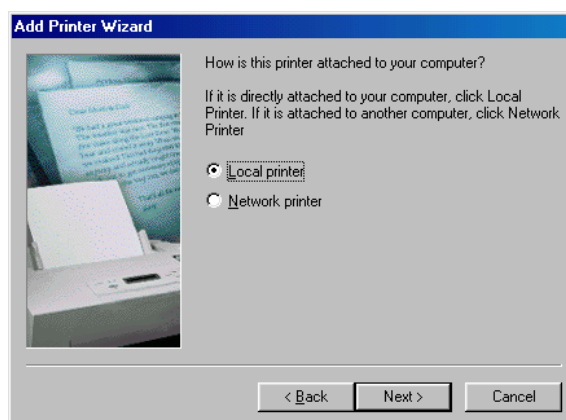


- ii. Enter the Network path or queue name for the printer or click **[Browse]** and locate the printer. When the network path or queue name is displayed, click **[Next]**.

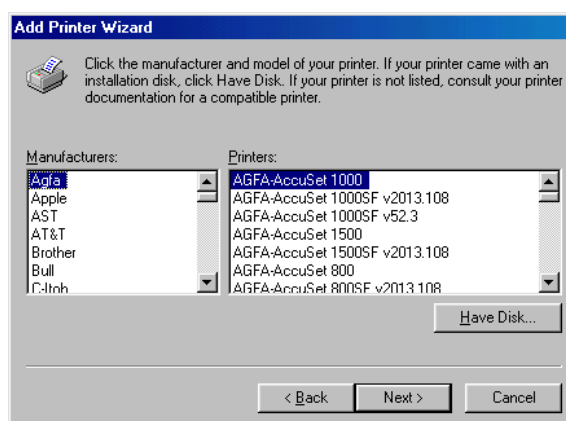


**For a locally connected printer:**

- i. Click the **[Local printer]** radio button then click **[Next]**.



16. Click **[Have Disk]**.



17. Browse to where the driver files were installed.

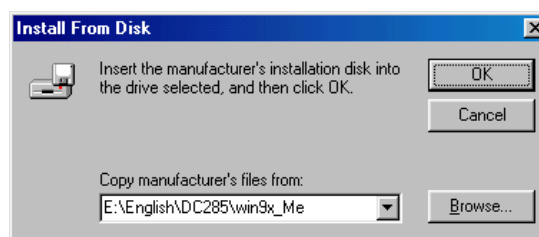
If you installed the files on your workstation, the location will be:

**C:\Program Files\Xerox\Xerox WorkCentre Pro 423 & 428**

The driver file is called xrpsapeh.

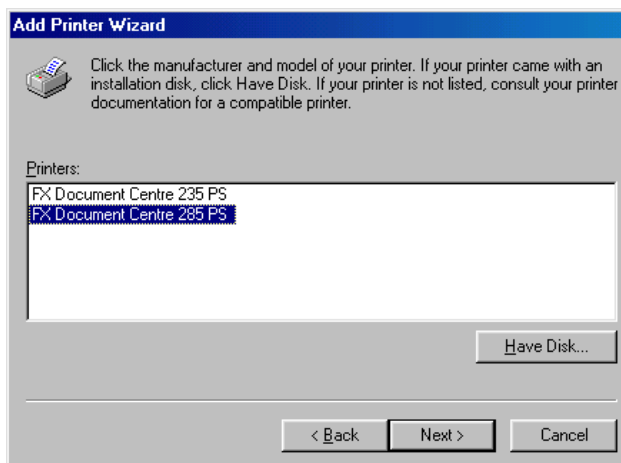
18. Choose this file and click **[Open]**.

19. Click **[OK]**.

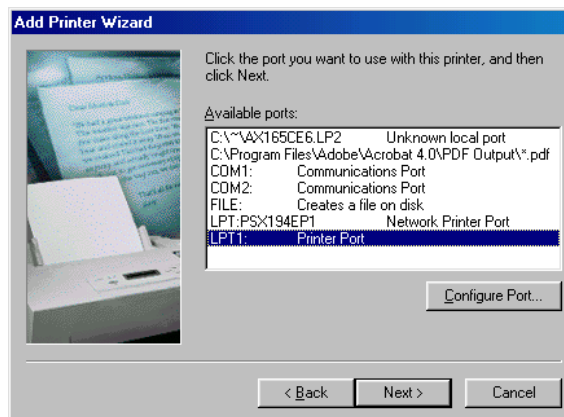




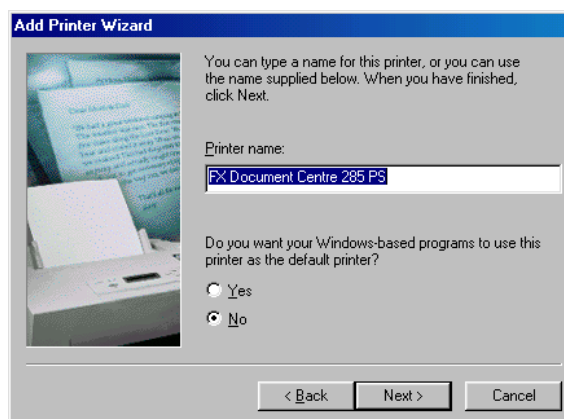
20. Select your printer model from the Printers list and click **[Next]**.



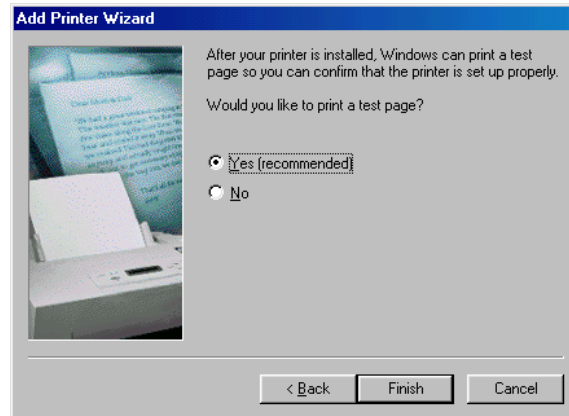
21. For **Local Printer only**, select the port that you are using and click **[Next]**.



22. Type a name for the printer, specify whether you want to use the printer as the default printer, then click **[Next]**.

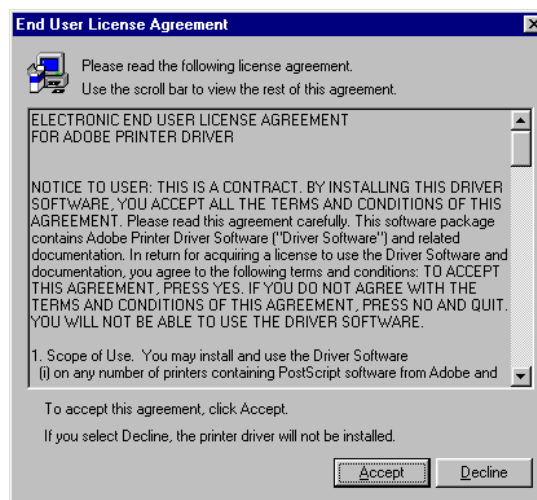


23. Specify whether you want to print a test page, then click **[Finish]**.

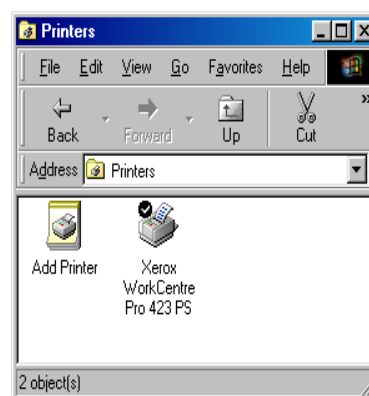


Installation begins.

24. Read the End User License Agreement and click **[Accept]**.



25. If you click Decline, see *"If you click Decline in the License Agreement"* on page 3-11 for details.
26. Confirm that a printer has been added in the Printers window.



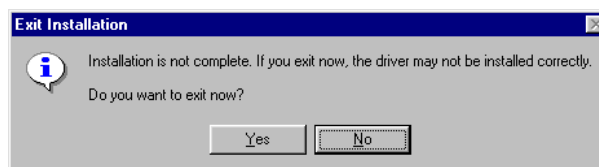
This completes installation of the printer driver. Remove the CD-ROM from the drive.

See *"Printer Driver Properties"* on page 3-12 to configure the printer. Store your CD-ROM in a safe place.

## If you click **Decline** in the License Agreement

---

If you click **[Decline]** in the End User License Agreement, the following dialog box appears.



Click **[No]** to return to and continue the operation.

Click **[Yes]** to cancel installation. A printer is added in the Printers window, but the printer driver is not installed properly.

When you right-click the printer and click Properties from the menu, the Re-installation tab is added to the printer driver properties dialog box. Follow the directions on that tab.

When you finish reinstalling the printer driver, see *"Printer Driver Properties"* on page 3-12 to set up the printer.

## Printer Driver Properties

---

This section describes printer specific settings included in the printer driver properties.

- Configuration Tab
- Options Tab
- Output Settings Tab

---

**NOTE:** You can also refer to Help for explanations of these settings. See “3.4 How to Use Help” for details about how to use Help.

---

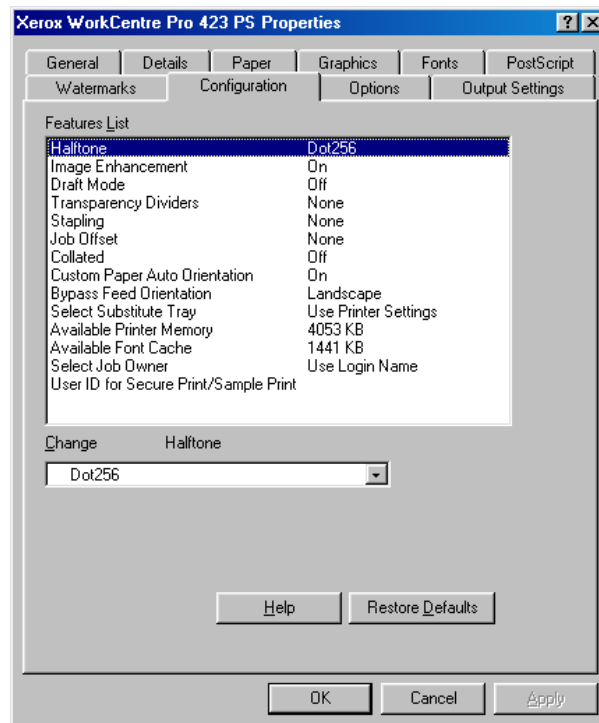
To view the printer driver properties, select the printer icon in the Printers window, then click Properties on the File menu.

## Configuration Tab Settings

---

This section describes the settings of the Configuration tab.

Select the function that you want to set in Features List and change the settings in the Change box below.



---

**NOTE:** You can restore defaults by clicking Restore Defaults.

---

---

**NOTE:** The settings that can be selected vary depending on which options have been installed. Make these settings after confirming that option settings are complete.

---

See “Options Tab Settings” on page 3-15.

## Settings

---

**Halftone** - Specifies the type of halftone.

When it is possible to adjust halftones in an application, this setting may be disabled.

**Image Enhancement** - Specifies whether to use the Image Enhancement function.

Selecting On smooths out the boundaries between black and white when printing. This reduces jagged edges, thereby artificially increasing the resolution of the image. When printing an image (bitmap) composed of coarse halftone dots, smooth color gradation is impossible in certain situations. In this case, select Off.

**Draft Mode** - Specifies whether to reduce the amount of toner used when printing drafts.

When you select On, the overall printed color becomes lighter. This is best for printing documents when print quality is not necessary.

**Transparency Dividers** - Specifies whether to use transparency dividers and the source of the separators, if selected.

Select Auto for the paper source to automatically feed from the paper tray with paper of the same size and in the same orientation as transparencies.

---

**NOTE:** When using Transparency Dividers, be sure to load paper of the same size and in the same orientation as transparencies into the paper tray.

---



---

**NOTE:** The Transparency Dividers function cannot be used in the following situations.

---

- When anything other than Manual feed is selected for Paper source in the Paper tab.
- When anything other than Transparency is selected for Paper type in the Paper tab.
- When anything other than Center Output Tray is selected for Output bin in the Paper tab.
- When the Duplex feature is selected in the Paper tab.

**Stapling** - Specifies whether to staple printed documents as well as the position of the staple.

- You can staple 2 to 30 sheets.
- You cannot use staples in the following situations.
  - When anything other than Finisher Tray Upper is selected for Output bin in the Paper tab.
  - When Job Offset is selected.

**Job Offset** - Shifting the output positions of adjacent jobs (print command) or copies (sets) is called Job Offset. The positions of adjacent jobs or sets of copies are shifted to either sides of the output tray.

**Collated** - Selects whether to collate a multiple-page file per set when they are printed.

---

**NOTE:** This function is enabled when the printer HDD kit is installed.

---

**Custom Paper Auto Orientation** - Specifies whether to correct the paper orientation when printing on custom paper.

When printing with custom paper, select On to correct the orientation rotated at 90 degrees.

**Bypass Feed Orientation** - Specifies the paper orientation when printing from the bypass tray. When you set the short side of the paper in the bypass tray feed direction, select Landscape. When you set the long side of the paper in the bypass tray, select Portrait.

**Select Substitute Tray** - Specifies what action to take when the paper for the print size is not loaded in the machine.

➤ **Use Printer Settings**

Uses the printer setting. The settings can be confirmed on the printer control panel.

➤ **Display message**

Displays paper supply messages on the printer control panel. Printing is unavailable until paper is supplied.

➤ **Use Nearest Size (with Zoom)**

Selects the nearest paper size and prints. Automatically reduces images for printing, as necessary.

➤ **Use Nearest Size (no Zoom)**

Selects the nearest paper size and prints in an equal size.

➤ **Use Larger Size (with Zoom)**

Prints in an equal size on paper larger than the original. Automatically reduces images for printing, as necessary.

➤ **Use Larger Size (no Zoom)**

Prints in an equal size on paper larger than the original.

**Available Printer Memory** - Enter the amount of usable printer memory (in KB) in the Edit box. Normally, it is not necessary to change this.

**Available Font Cache** - Enter the amount of memory available for the font cache (in KB) in the Edit box. Normally, it is not necessary to change this.

Select Job Owner - The following selections are available:

➤ **Use Login Name**

Use your Windows Login Name as the job owner name. The job owner name becomes the "Login User Name\Host Name". You can use up to 31 characters for the login name. If it exceeds 31 characters, only the first 31 characters are used.

➤ **Enter Owner Name**

Select this when you want to specify a custom job owner name. Enter any job owner name in the Job Owner Name box. Up to 31 characters can be entered for the job owner name. If it exceeds 31 characters, only the first 31 characters are used. By default, this is "Unknown User".

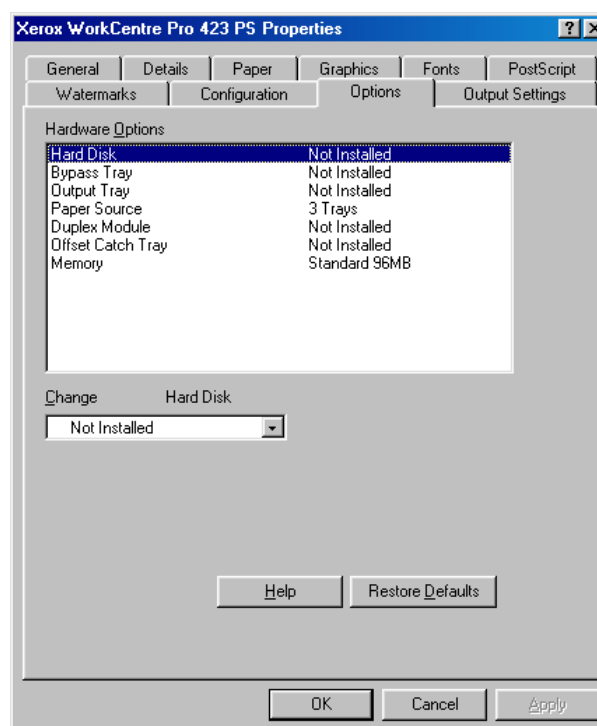
**User ID for Secure Print Sample Set** - Secure Print/Sample Print is effective when an optional printer HDD kit is installed. This item does not appear unless Installed is selected for Hard Disk in the Options tab.

Specify the User ID of Secure Print or Sample Print with a maximum of 24 alphanumeric characters. When the User ID is already specified, it is displayed in the edit box. If you are using Secure Print, you also need to enter a password. You can enter up to four digits and each input digit appears as an asterisk.

## Options Tab Settings

This section describes the settings in the Options tab.

Select the settings that you want to make in Hardware Options and change them in the Change box below. To use this function, it is necessary to make appropriate settings in this tab.



**NOTE:** You can restore defaults by clicking Restore Defaults.

## Settings

**Hard Disk** - Specifies whether the printer HDD kit is installed.

Select Installed when the printer HDD kit is installed. When you select Installed, it is possible to select Collated in the Configuration tab.

**Bypass Tray** - Specifies whether a bypass tray is installed.

**Output Tray** - Specifies whether an output tray is installed, as well as its type.

**Paper Source** - Select Tray 4 when the additional tray kit is installed.

**Duplex Module** - Specifies whether a duplex unit is installed.

Select Installed when the duplex unit is installed. When you select Installed, it is possible to select the Duplex feature in the Paper tab.

**Offset Catch Tray** - Specifies whether an offset catch tray is installed.

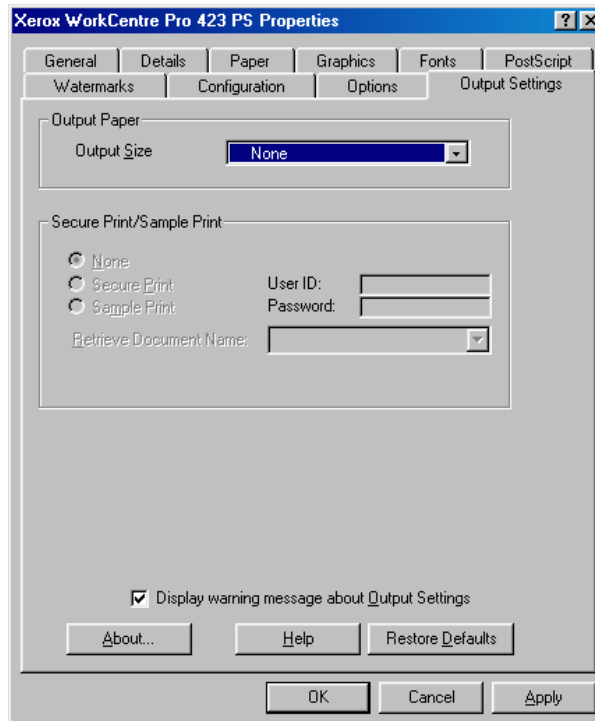
Select Installed when an offset catch tray is installed. When you select Installed, it is possible to set Job Offset in the Configuration tab.

**Memory** - The printer memory is fixed at Standard 96 MB.

## Output Settings Tab Settings

---

This section describes the settings in the Output Settings tab.



You can restore defaults by clicking Restore Defaults.

### Output Paper

---

**Output Size** - Selects the size of the paper used for output. The output is automatically enlarged or reduced, depending on the paper size selected here and the paper size selected in the Paper tab.

For example, when you select B5 in Paper size in the Paper tab and A4 is selected here, the output is automatically enlarged and printed.

When you select None, the job is printed based on the paper size selected in the application.

### Secure Print/Sample Print

---

Secure Print is a function that temporarily stores print jobs in the printer, then prints them when instructed from the printer control panel.

Sample Print is a function that outputs only 1 copy when multiple copies are specified. If there is no problem, it outputs the remaining sets of copies.

By setting User ID for Secure Print/Sample Print in the Configuration tab, a value appears in User ID or Password, allowing you to output secure prints/sample prints.

---

**NOTE:** Secure Print/Sample Print is effective when an optional printer HDD kit is installed.

---

**None** - Select when you do not want to output secure prints/sample prints.

**Secure Print** - Select when you want to output secure prints.



**Sample Print** - Select when you want to output sample prints.

---

**NOTE:** The Collated feature must be selected on the Configuration tab when using Sample Print.

---

See “*User Guide (Printer)*” for details of the operation at the printer.

**User ID** - Displays the User ID for Secure Print or Sample Print. The user ID displayed is the User ID specified on the Configuration tab. This option can only be selected when the setting on the Configuration tab has been completed. This is a display-only item and cannot be changed here.

**Password** - Displays the password for Secure Print specified on the Configuration tab. Each digit is represented by an asterisk. This option can only be selected when the setting on the Configuration tab has been completed. This is a display-only item and cannot be changed here.

**Retrieve Document Name** - Select the method of specifying the document name. If you have selected Auto Retrieve, the valid document name can be up to 24 alphanumeric characters.

**Document Name** - When “Enter Document Name” is selected in the Retrieve Document Name list, you can specify a document name with a maximum of 24 alphanumeric characters.

---

## Display warning message about Output Settings

---

When printing, the printer driver checks whether Output Size setting conflicts with other settings.

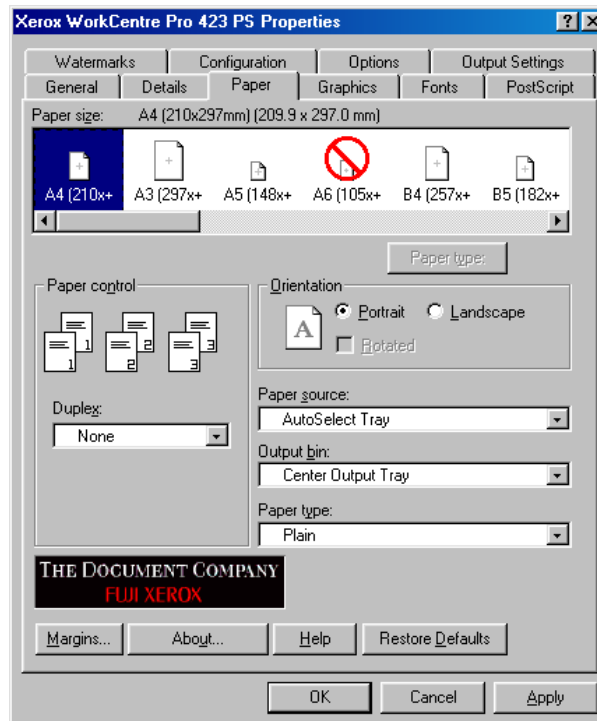
When this is activated, a conflict dialog box appears if there is non-conformity during printing. Check the content of the dialog box and resolve the conflicting function to continue printing.

When this is inactive, no conflict dialog box appears, but the conflicting setting is automatically resolved and printing continues.

# How to Use Help

---

The following describes how to use Help.



1. Click **?** and a ? mark appears next to the pointer. You can then click items for which you need explanations, opening a pop-up window that contains relevant information. Click inside the pop-up window to close it.
2. Click **[Help]**, an explanation of the current tab appears as Help information.

# **4    *Operation with Windows NT 4.0***

The following information can be found in this chapter:

- About the Software
  - Bundled Software
  - Hardware/Software Requirements
- Installing the AdobePS Printer Driver
  - Installation Procedure
- Device Options and Print Settings
  - Device Settings Tab Settings
  - Configuration Tab Settings
  - Advanced Tab Settings
  - Output Settings Tab Settings
- How to Use Help

## About the Software

---

This section describes the software for Windows NT 4.0 bundled with the PostScript Driver Library CD-ROM.

## Bundled Software

---

The following items are included in the “English\DC423(or DC428 depending on your printer model)\NT40” folder and “English\Utility\NT40” folder on the CD-ROM. Also, be sure to read “Readme.txt” containing cautionary notes about how to use the printer driver.

**AdobePS Printer Driver (ver. 5.1.x) and PPD files** - Adobe PostScript driver and PPD files (for Windows NT 4.0).

**ATM (Adobe Type Manager)(ver. 4.0)** - Helps you install typefaces, activate and manage your fonts.

**Adobe Screen Fonts (TrueType/PostScript)** - Includes 136 screen fonts (19 TrueType fonts and 117 PostScript fonts), which are compatible with the printer fonts. ATM is used to install the PostScript screen fonts. When using these fonts to print, it is recommended that you use the Adobe PostScript (5.1.x) printer driver.

**Adobe Acrobat Reader** - Allows you to view and print PDF files on all major computing platforms.

## Hardware/Software Requirements

---

The minimum system requirements for the Windows NT 4.0 printer driver are described below.

### Computer System

---

- i486 or Pentium processor-based personal computer (i486 or Pentium processor recommended)
- 16 MBytes of available RAM (32 MBytes recommended)
- 6 MBytes of available hard-disk space

### Basic Software

---

Windows NT Workstation 4.0/Windows NT Server 4.0 (Service Pack 5 or above).

## Installing the AdobePS Printer Driver

Install the AdobePS 5.1.x printer driver onto Windows NT by following the procedure below.

It is possible to cancel installation of the printer driver by clicking Cancel in the dialog box displayed during installation. You can also click Back to delete the settings in that dialog box and return to the previous dialog box.

### Installation Procedure

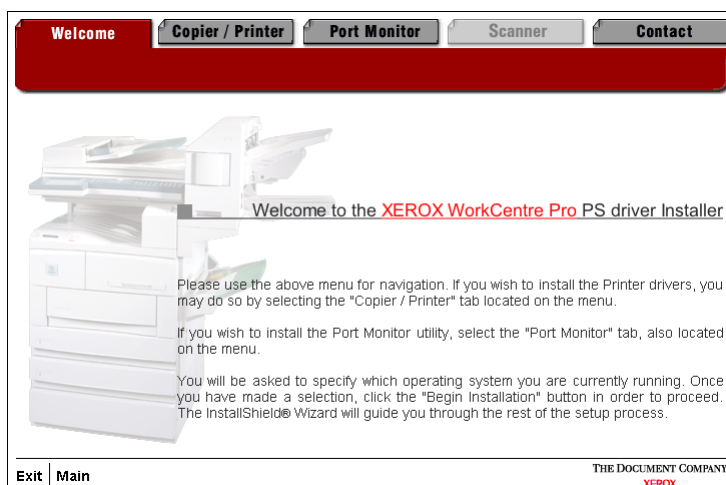
1. Start Windows NT 4.0.

**NOTE:** Log on as a Power User group member or an Administrator. Refer to the Windows NT 4.0 documentation for details about the Power User group.

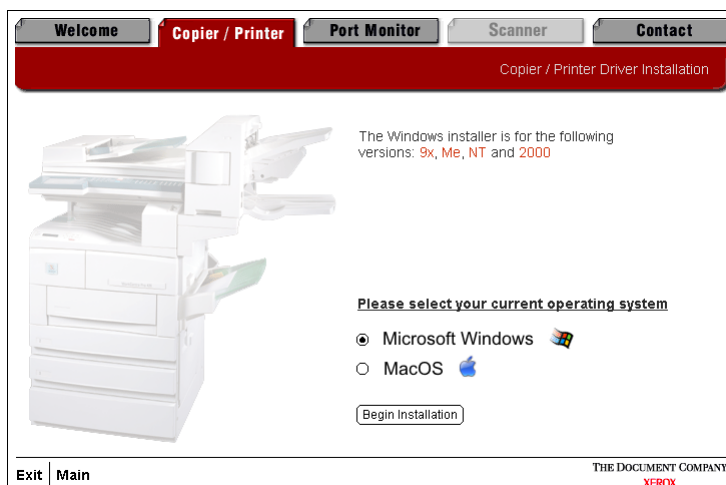
2. Insert the PostScript driver CD in the CD-ROM drive.  
The Install program should run automatically.



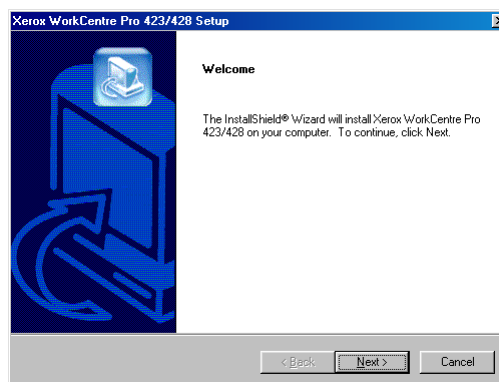
3. Click Driver Installation.  
The Welcome screen for the PostScript driver installation is displayed.
4. Click the Copier/Printer tab.



- Click **Begin Installation** on the Copier/Printer tab.

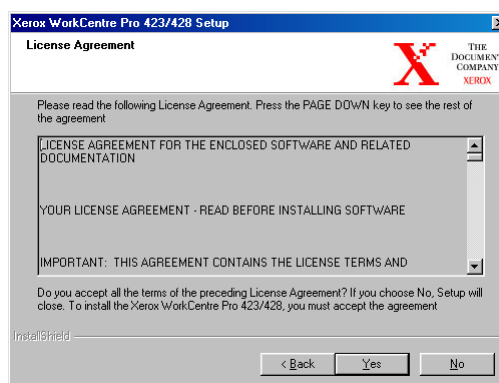


- Click **[Next]** on the Welcome screen.

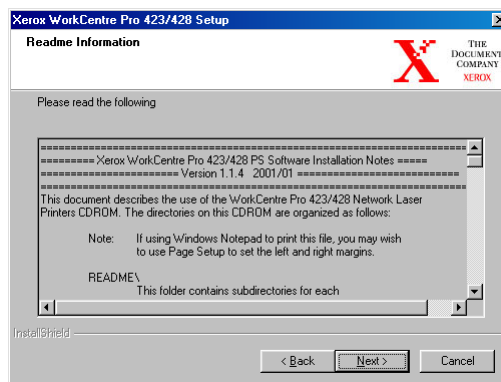


- Read the License Agreement and click **[Yes]** to accept the agreement.

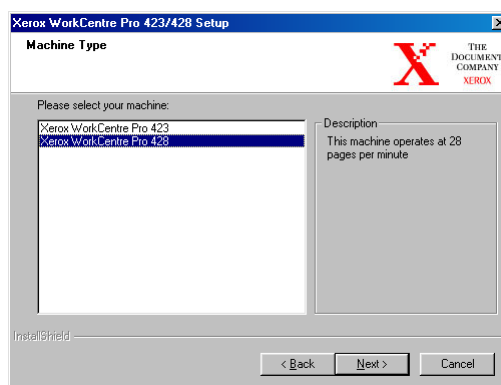
**NOTE:** If you click **[No]** the installation will terminate.



8. Read the readme information and click **[Next]**.

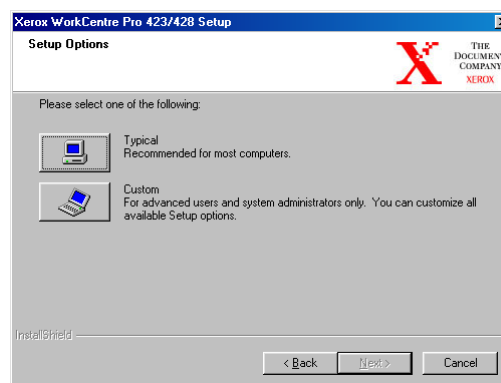


9. Highlight the printer that you want to install and click **[Next]**.

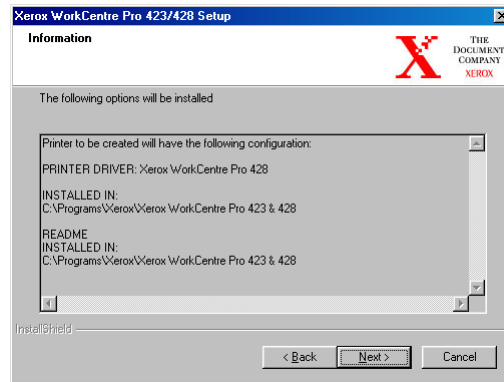


10. Click the Setup button that you want to use to install the printer.

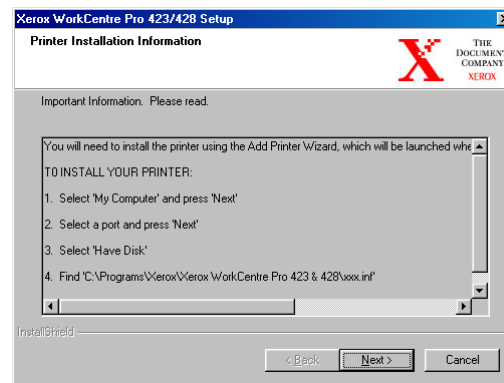
**NOTE:** It is recommended that you use the Typical button unless you are an advanced user wanting to customize the installation.



11. Check the information screen and click **[Next]**.

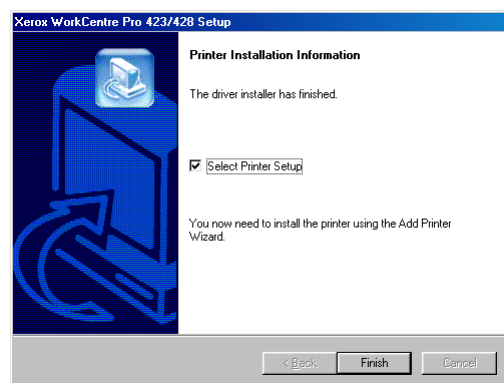


12. Read the Printer Installation Information screen and click **[Next]**.



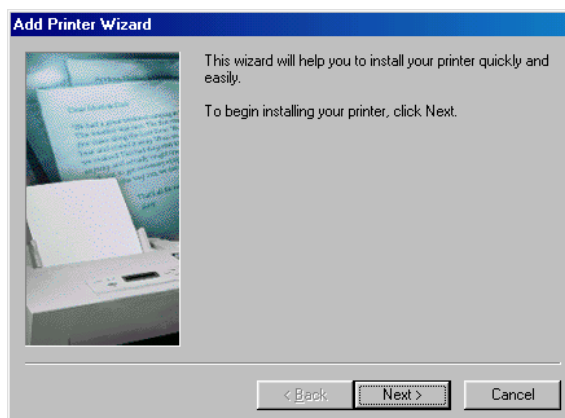
13. Make sure that the Select Printer Setup box is checked and click **[Finish]** to launch the Add Printer Wizard and complete the installation of the printer.

**NOTE:** If you want to complete the installation of the printer later, uncheck the Select Printer Setup box before clicking **[Finish]**.





14. Click **[Next]** to start the wizard.

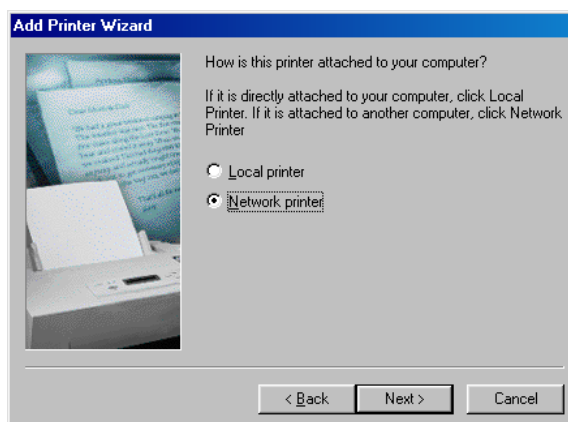


15. Select how the printer is connected to the computer.

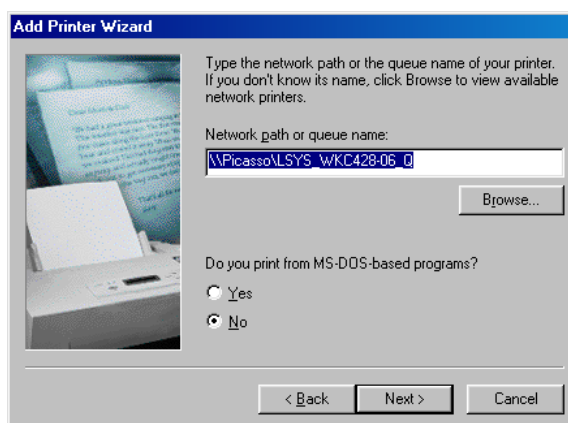
Select **[My Computer]** if the printer is connected directly to the computer or to the network in the TCP/IP(LPD) environment.  
Select **[Network printer server]** in other cases.

**For a network connected printer:**

- i. Click the **[Network printer]** radio button then click **[Next]**.

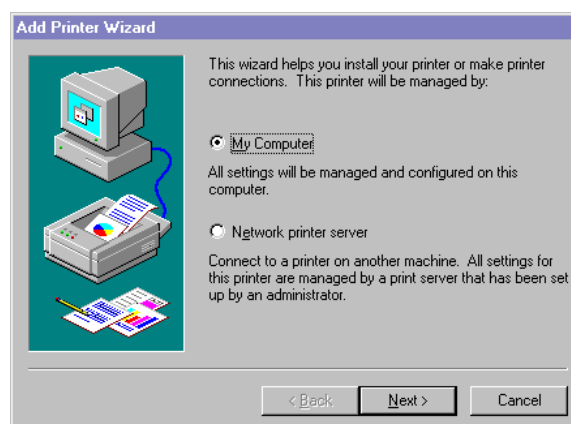


- ii. Enter the Network path or queue name for the printer or click **[Browse]** and locate the printer. When the network path or queue name is displayed, click **[Next]**.

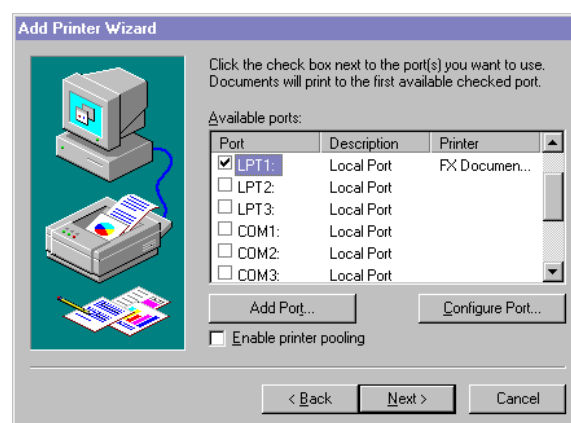


**For a locally connected printer:**

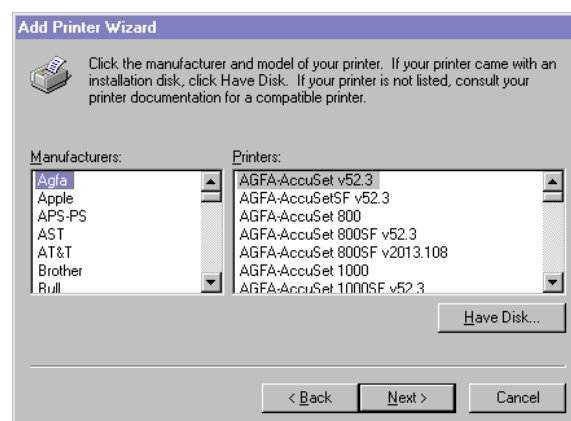
- i. Click the **[My Computer]** radio button then click **[Next]**.



- ii. Select the port you are using and click **[Next]**.

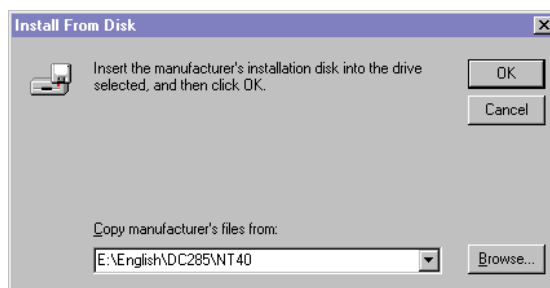


16. Click **[Have Disk]**.

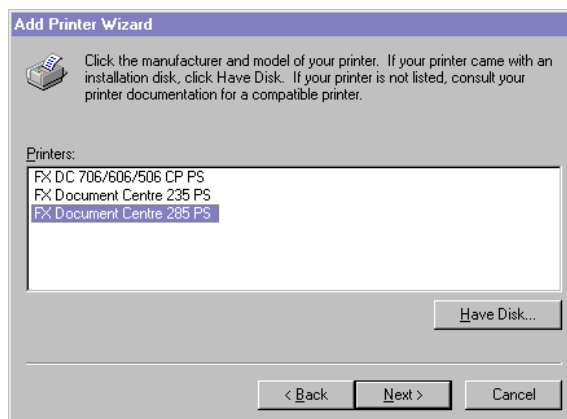


17. Browse to where the driver files were installed.  
If you installed the files on your workstation, the location will be:  
**C:\Program Files\Xerox\Xerox WorkCentre Pro 423 & 428**  
The driver file is called xrpasapeh.
18. Choose this file and click **[Open]**.

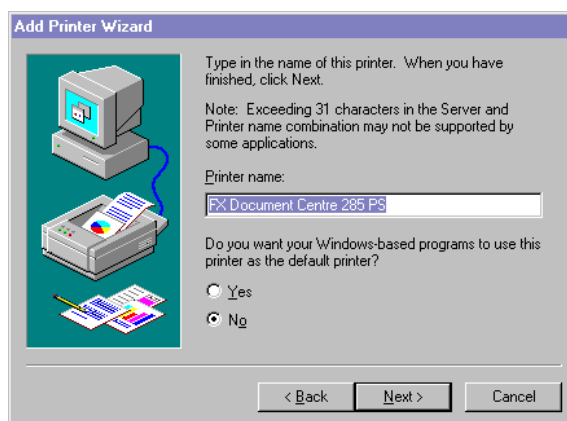
19. Click **[OK]**.



20. Select your printer model from the Printers list and click **[Next]**.



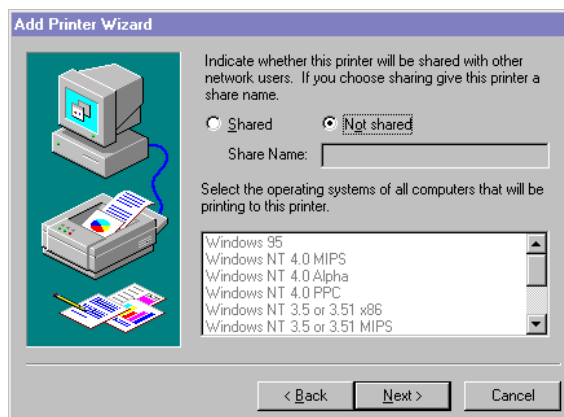
21. Enter a printer name, specify if you want to use the printer as the default printer, then click **[Next]**.



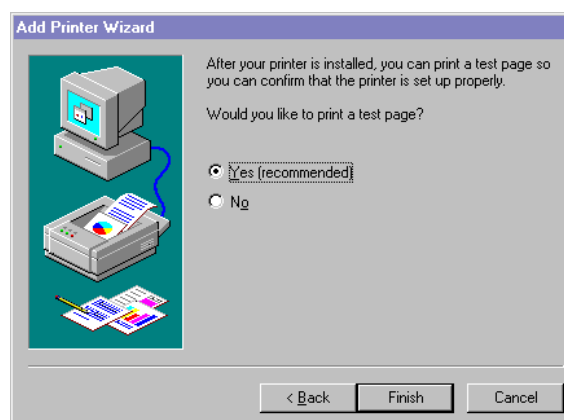
**For a locally connected printer:**

- i. Select Not shared and click **[Next]**.

We recommend that you install the driver on each computer with the procedure appropriate to the OS.

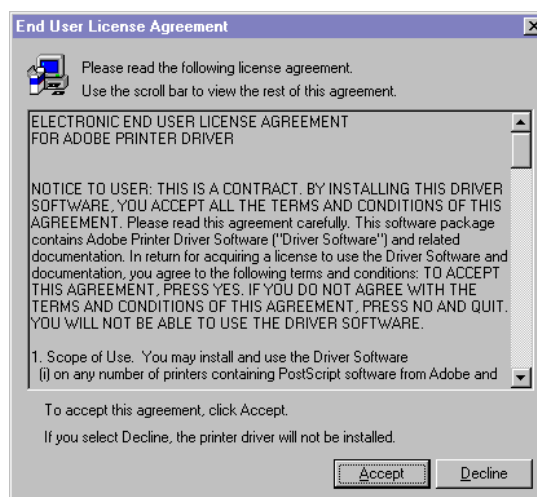


- ii. Specify whether you want to print a test page, then click **[Finish]**.



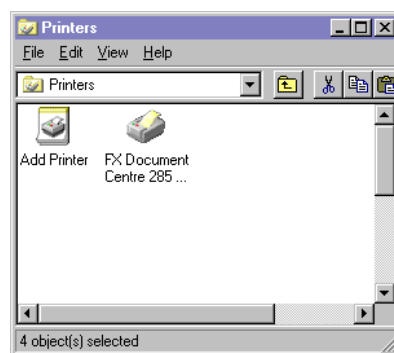
The installation begins.

22. Read the End User License Agreement and click **[Accept]**.



If you click Decline, see *"If you click Decline in the License Agreement"* on page 4-12 for details.

23. Confirm that the printer has been added in the Printers window.



This completes installation of the printer driver. Remove the CD-ROM from the drive.

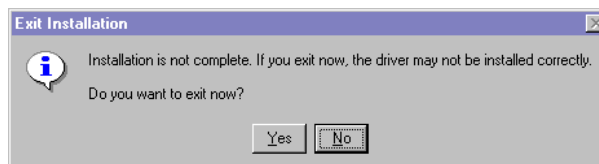
See *“Device Options and Print Settings”* on page 4-13 to configure the printer.

Store your CD-ROM in a safe place.

## If you click Decline in the License Agreement

---

When you click Decline in the End User License Agreement, the following dialog box appears.



Click **[No]** to return to 13 and continue the operation.

Click **[Yes]** to cancel the installation. A printer is added in the Printers window, but the printer driver is not installed properly.

Select the printer and click **[Properties]** on the File menu. The Re-installation tab is added to the printer driver properties dialog box. Follow the directions on that tab.

When you finish reinstalling, see *"Device Options and Print Settings"* on page 4-13 to set up the printer.

## Device Options and Print Settings

This section describes printer specific settings in the settings in the printer driver properties and document presets.

- Installable Options in the Device Settings Tab
- Configuration Tab
- Printer Specific Sections in the Device Settings of the Advanced Tab
- Output Settings Tab

**NOTE:** You can also refer to Help for explanations of these settings. See "How to Use Help" on page 4-19 for details about how to use Help.

To view the Device Settings or Configuration tabs, select the printer icon in the Printers window, then click Properties on the File menu.

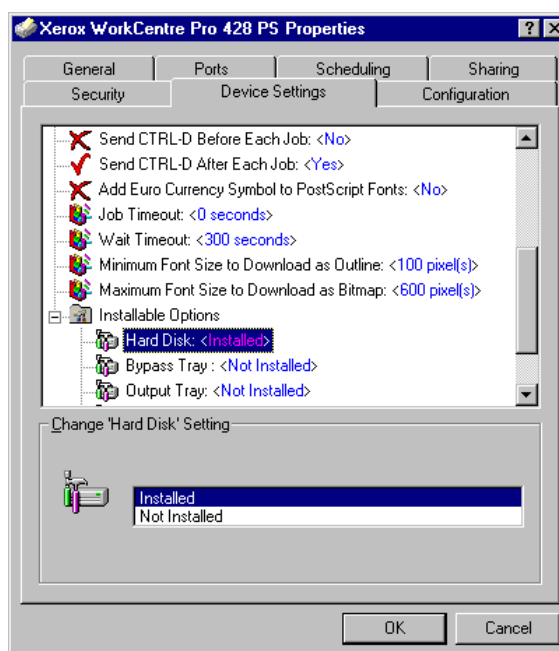
To view the Advanced or Output Settings tabs, select the printer icon in the Printers window, then click Document Defaults on the File menu.

## Device Settings Tab Settings

This describes Installable Options in the Device Settings tab.

To print correctly, it is necessary to make appropriate settings in this tab.

Select the items in Installable Options and change the settings in the Change Setting box at the bottom of the tab.



## Settings

**Hard Disk** - Specifies whether the printer HDD kit is installed.

Select Installed when the printer HDD kit is installed.

**Bypass Tray** - Specifies whether a bypass tray is installed.

**Output Tray** - Specifies whether an output tray is installed, as well as its type.

**Paper Source** - Select 4 Trays when the additional tray kit is installed.

**Duplex Module** - Specifies whether a duplex unit is installed.

Select Installed when the duplex unit is installed. When you select Installed, it is possible to set the Duplex Printing feature in the Page Setup tab.

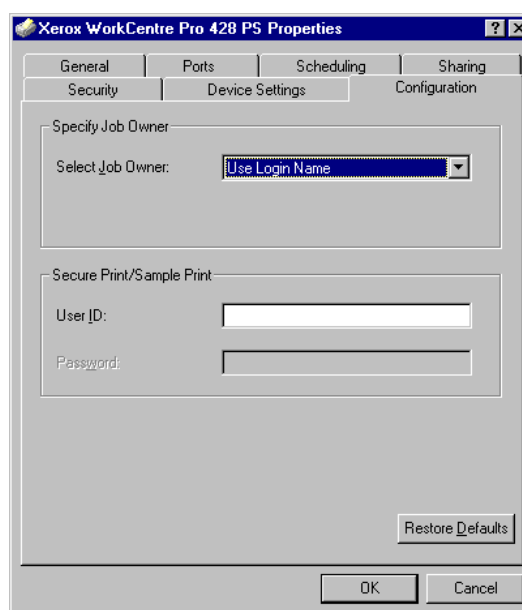
**Offset Catch Tray** - Specifies whether an offset catch tray is installed.

Select Installed when an offset catch tray is installed. When you select Installed, it is possible to set Job Offset in the Advanced tab.

## Configuration Tab Settings

---

This section describes the settings of the Configuration tab.



---

**NOTE:** You can restore defaults by clicking **[Restore Defaults]**.

---

### Select Job Owner

---

The following selections are available:

**Use Login Name** - Use your Windows Login Name as the job owner name. The job owner name becomes the "Login User Name\Host Name". You can use up to 31 characters for the login name. If it exceeds 31 characters, only the first 31 characters are used.

**Enter Owner Name** - Select this when you want to specify a custom job owner name. Enter any job owner name in the Job Owner Name box. Up to 31 characters can be entered for the job owner name. If it exceeds 31 characters, only the first 31 characters are used. By default, this is "Unknown User".

### Secure Print/Sample Print

---

**User ID** - Secure Print/Sample Print is effective when an optional printer HDD kit is installed. This item does not appear unless Installed is selected for Hard Disk in Installable Options of the Device Settings tab.



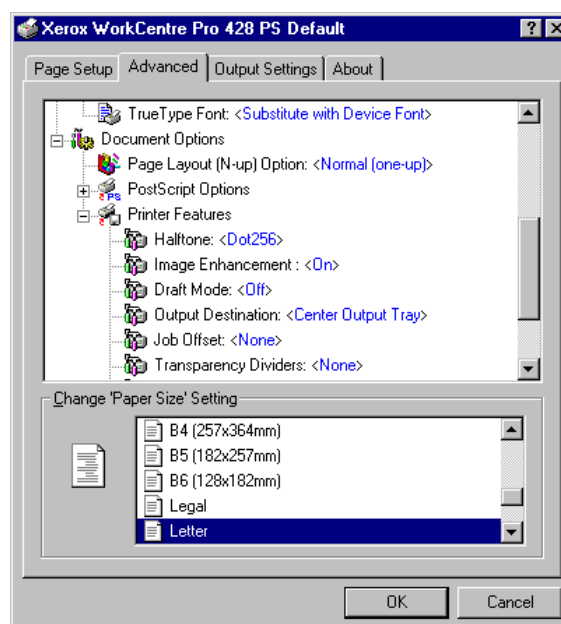
Specify the User ID of Secure Print or Sample Print with a maximum of 24 alphanumeric characters. When the User ID is already specified, it is displayed in the edit box.

**Password** - If you are using Secure Print, you also need to enter a password. You can enter up to four digits and each input digit appears as an asterisk.

## Advanced Tab Settings

This section describes the settings of Printer Features in the Advanced tab.

Select the items in Printer Features under Document Options of the Advanced tab and change the settings in the Change Setting box at the bottom of the tab.



**NOTE:** The settings that can be selected vary depending on which options have been installed. Make these settings after confirming that option settings are complete.

See "Device Settings Tab Settings" on page 4-13.

## Settings

**Halftone** - Selects the type of halftone.

When it is possible to adjust halftones in an application, this setting may be disabled.

**Image Enhancement** - Specifies whether to use the Image Enhancement function.

Selecting On smooths out the boundaries between black and white when printing. This reduces jagged edges, thereby artificially increasing the resolution of the image. When printing an image (bitmap) composed of coarse halftone dots, smooth color gradation is impossible in certain situations. In this case, select Off.

**Draft Mode** - Specifies whether to reduce the amount of toner used when printing drafts.

When you select On, the overall printed color becomes lighter. This is best for printing documents when print quality is not necessary.

**Output Destination** - Selects the destination for output.

---

**NOTE:** The items that can be selected vary according to whether the optional side tray kit or finisher has been installed.

---

**Job Offset** - Shifting the output positions of adjacent jobs (print command) or copies (sets) is called Job Offset. The positions of adjacent jobs or sets of copies are shifted to either sides of the output tray.

**Transparency Dividers** - Specifies whether or not to use transparency dividers and the source of the dividers, if selected.

Select Auto for the paper source to automatically feed from the paper tray with paper of the same size and in the same orientation as transparencies.

---

**NOTE:** When using Transparency Dividers, be sure to load paper of the same size and in the same orientation as transparencies into the paper tray.

---

---

**NOTE:** The Transparency Dividers function cannot be used in the following situations:

---

- When anything other than Manual Feed is selected for Paper Source in the Page Setup tab.
- When anything other than Transparency is selected for Media of Paper/Output in the Advanced tab.
- When anything other than Center Output Tray is selected for Output Destination of Printer Features in the Advanced tab.
- When the Duplex Printing feature is set in the Page Setup tab.

**Bypass Feed Orientation** - Specifies the paper orientation when printing from the bypass tray. When you set the short edge of the paper in the bypass tray feed direction, select Landscape. When you set the long edge of the paper in the bypass tray, select Portrait.

**Stapling** - Specifies whether to staple printed documents as well as the position of the staple.

---

**NOTE:** You can staple 2 to 30 sheets.

---

---

**NOTE:** You cannot use staples in the following situations:

---

- When anything other than Finisher Tray is selected for Output Destination in the Advanced tab.
- When Job Offset is selected.

**Custom Paper Auto Orientation** - Specifies whether to correct the paper orientation when printing on custom paper.

When printing with custom paper, select On to correct the orientation rotated at 90 degrees.

**Select Substitute Tray** - Specifies what action to take when the paper for the print size is **not loaded in the machine**.

**Use Printer Settings** - Use the printer setting. The settings can be confirmed on the printer control panel.

**Display message** - Displays paper supply messages on the printer control panel. Printing is impossible until paper is supplied.

**Use Nearest Size (with Zoom)** - Selects the nearest paper size and prints in an equal size. Automatically reduces images for printing, as necessary.

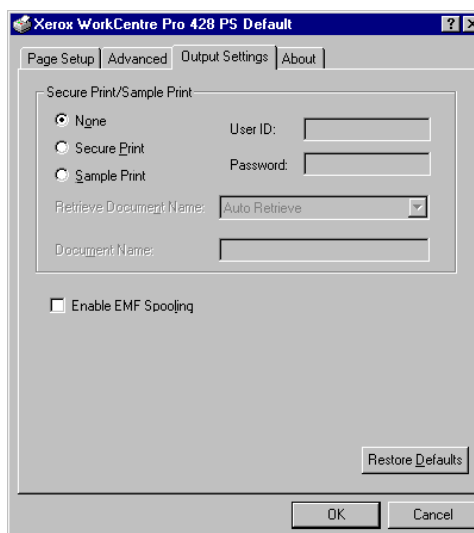
**Use Nearest Size (No Zoom)** - Selects the nearest paper size and prints in equal size.

**Use Larger Size (with Zoom)** - Prints in an equal size on paper larger than the original. Automatically reduces images for printing, as necessary.

**Use Larger Size (No Zoom)** - Prints in an equal size on paper larger than the original.

## Output Settings Tab Settings

This section describes the settings in the Output Settings tab.



**NOTE:** You can restore defaults by clicking Restore Defaults.

### Secure Print/Sample Print

Secure Print is a function that temporarily stores print jobs in the printer, then prints them when instructed from the printer control panel.

Sample Print is a function that outputs only 1 copy when multiple copies are specified. If there is no problem, it outputs the remaining sets of copies.

By setting Secure Print/Sample Print in the Configuration tab, the setting values appear in User ID or Password, allowing you to output secure prints/sample prints.

**NOTE:** Secure Print/Sample Print is effective when an optional printer HDD kit is installed.

See "User Guide (Printer)" for details of the operation at the printer.

**None** - Select when you do not want to output secure prints/sample prints.

**Secure Print** - Select when you want to output secure prints.

**Sample Print** - Select when you want to output sample prints.

**NOTE:** The Collated feature must be selected on the Page Setup tab when using Sample Print.

**User ID** - Displays the User ID for Secure Print or Sample Print. The user ID displayed is the User ID specified on the Configuration tab. This option can only be selected when the setting on the Configuration tab has been completed. This is a display-only item and cannot be changed here.

**Password** - Displays the password for Secure Print specified on the Configuration tab. Each digit is represented by an asterisk. This option can only be selected when the setting on the Configuration tab has been completed. This is a display-only item and cannot be changed here.

**Retrieve Document Name** - Select the method of specifying the document name. If you have selected Auto Retrieve, the valid document name can be up to 24 alphanumeric characters.

**Document Name** - When "Enter Document Name" is selected in the Retrieve Document Name list, you can specify a document name with a maximum of 24 alphanumeric characters.

## **Enable metafile spooling.**

---

**Enable EMF Spooling** - Specifies the format in which print information is spooled to disk.

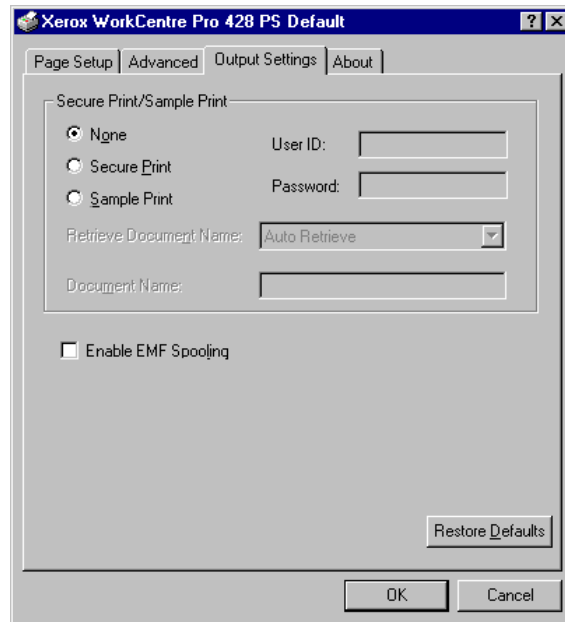
Select this check box to spool in EMF (metafile) format. This reduces the amount of time it takes to send jobs to the printer.

Deselect the check box to spool in RAW format. More time is required to convert printing information, so the amount of time it takes to send jobs to the printer increases.

If there seems to be a problem, deselect the check box.

# How to Use Help

The following describes how to use Help.



1. Click **?** and a ? mark appears next to the pointer. You can then click items for which you need explanations, opening a pop-up window that contains relevant information. Click inside the pop-up window to close it.
2. Click **[Help]**, an explanation of the current tab appears as Help information.



# 5 *Operation with Windows 2000*

The following information can be found in this chapter:

- About the Software
  - Bundled Software
  - Hardware/Software Requirements
- Installing the Printer Driver
  - Installation Procedure
- Device Options and Print Settings
  - Device Settings Tab Settings
  - Configuration Tab Settings
  - Advanced Options Dialog Box Settings
  - Output Settings Tab Settings
- How to Use Help

## About the Software

---

This section describes the software bundled with the PostScript Driver Library CD-ROM for Windows 2000.

## Bundled Software

---

The following items included in the enclosed CD-ROM are necessary to use the printer on Windows 2000. Also, be sure to read "Readme.txt" containing cautionary notes about how to use the printer driver.

**Microsoft PScript 5 Driver and PPD files** - Microsoft PScript 5 Driver and PPD files (for Windows 2000).

**Adobe Acrobat Reader** - Allows you to view and print PDF files on all major computing platforms.

## Hardware/Software Requirements

---

The minimum system requirements for the Windows 2000 printer driver are described below.

### Computer System

---

- i486 or Pentium processor-based personal computer (i486 or Pentium processor recommended)
- 16 MBytes of available RAM (32 MBytes recommended)
- 6 MBytes of available hard-disk space

### Basic Software

---

- Windows 2000 Professional
- Windows 2000 Server
- Windows 2000 Advanced Server



## Installing the Printer Driver

Install MS PScript 5 printer driver onto Windows 2000 by following the procedure below.

**NOTE:** It is possible to cancel installation of the printer driver by clicking **[Cancel]** in the dialog box displayed during installation. You can also click **[Back]** to delete the settings in that dialog box and return to the previous dialog box.

**NOTE:** If you want to set up Port 9100, refer to “*Network Print Environment User Guide*” (Network.pdf) in the “*PCL Driver/Network Utility*” CD-ROM.

## Installation Procedure

1. Start Windows 2000.

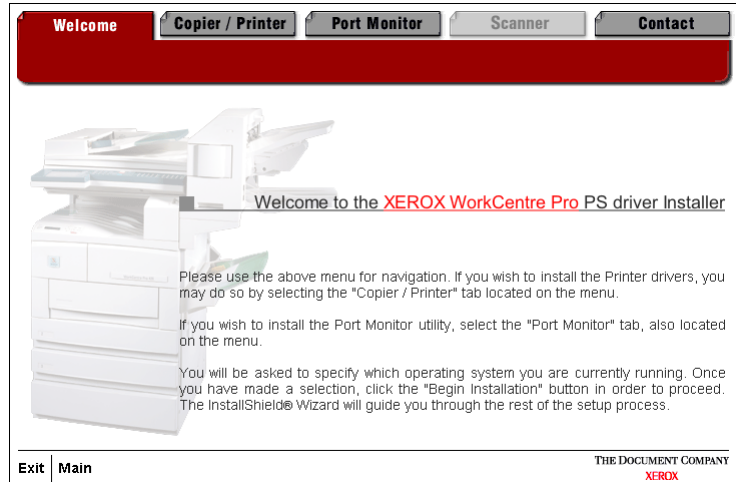
**NOTE:** Log on as a Power User group member or an Administrator. Refer to the Windows 2000 documentation for details about the Power User group.

2. Insert the PostScript driver CD in the CD-ROM drive.  
The Install program should run automatically.

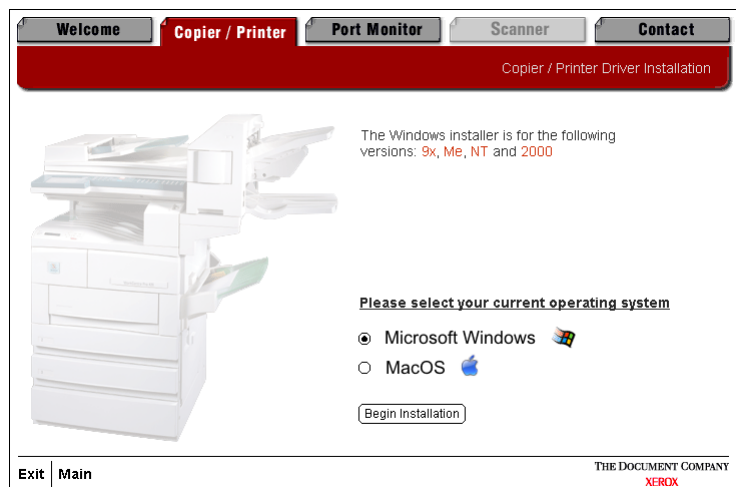


3. Click Driver Installation.  
The Welcome screen for the PostScript driver installation is displayed.

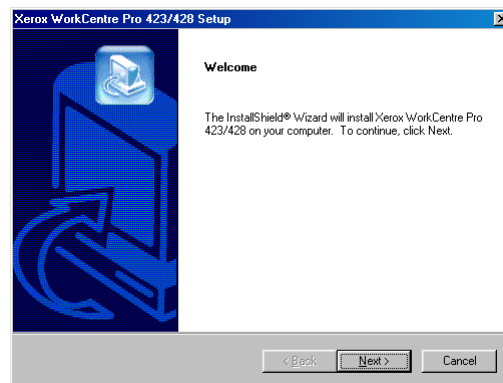
- Click the Copier/Printer tab.



- Click Begin Installation on the Copier/Printer tab.

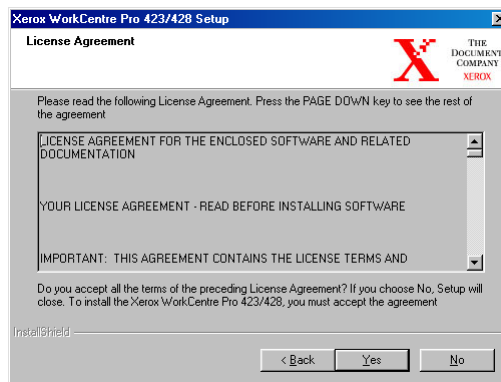


- Click [Next] on the Welcome screen.

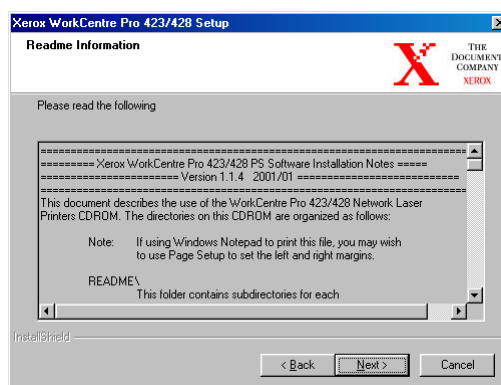


- Read the License Agreement and click [Yes] to accept the agreement.

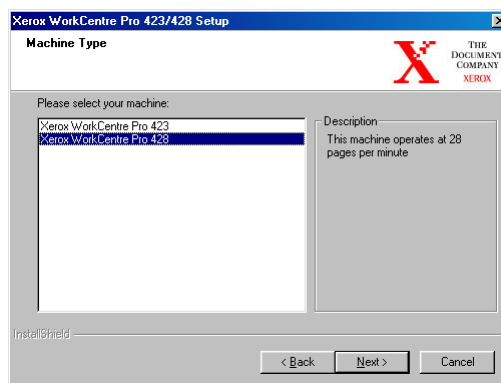
**NOTE:** If you click **[No]** the installation will terminate.



8. Read the readme information and click **[Next]**.

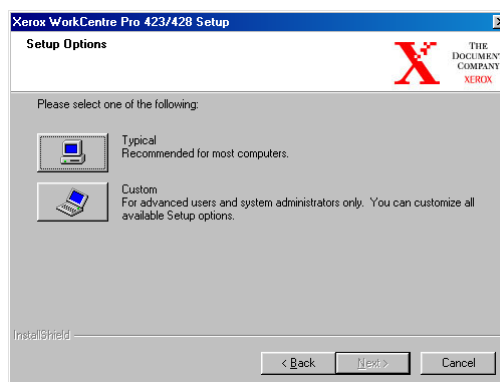


9. Highlight the printer that you want to install and click **[Next]**.

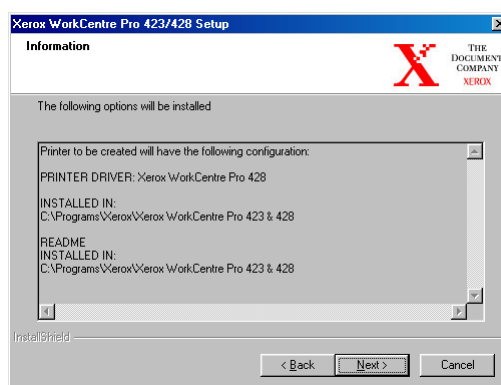


10. Click the Setup button that you want to use to install the printer.

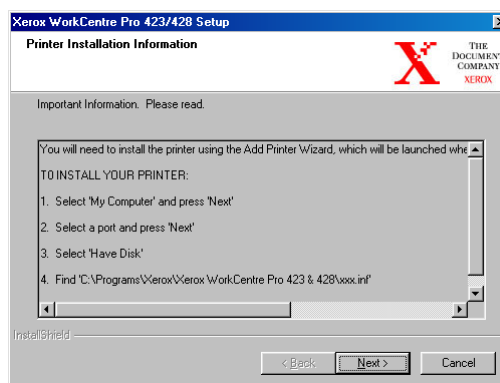
**NOTE:** It is recommended that you use the Typical button unless you are an advanced user wanting to customize the installation.



11. Check the information screen and click **[Next]**.

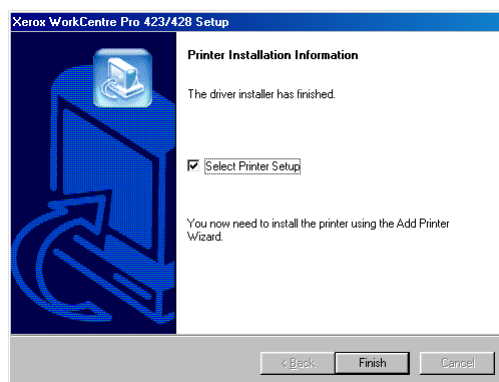


12. Read the Printer Installation Information screen and click **[Next]**.

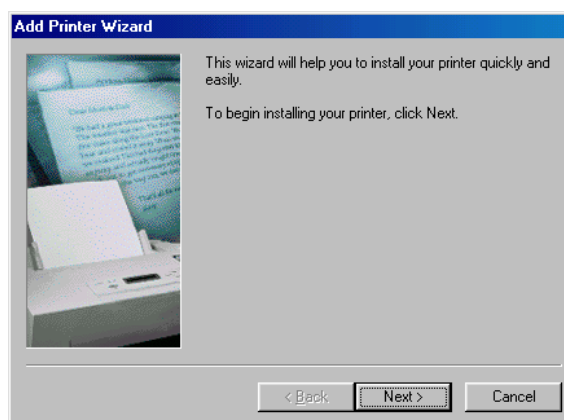


13. Make sure that the Select Printer Setup box is checked and click **[Finish]** to launch the Add Printer Wizard and complete the installation of the printer.

**NOTE:** If you want to complete the installation of the printer later, uncheck the Select Printer Setup box before clicking **[Finish]**.



14. Click **[Next]** to start the wizard.

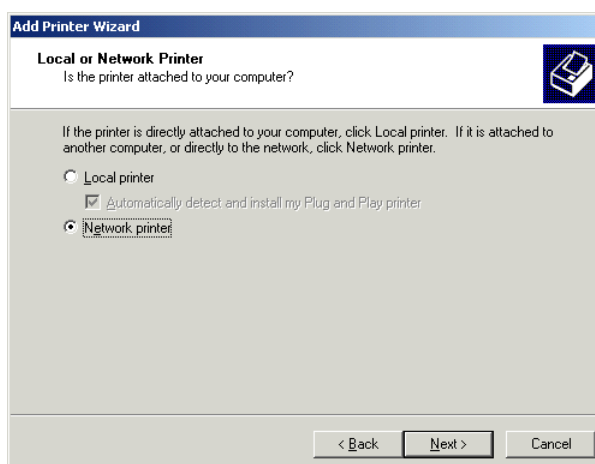


15. Select how the printer is connected to the computer.

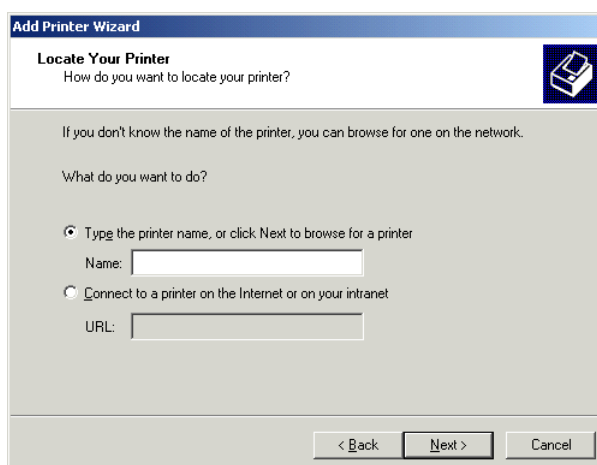
Select Local printer when the printer is connected directly to the computer. Otherwise, select Network printer.

**For a network connected printer:**

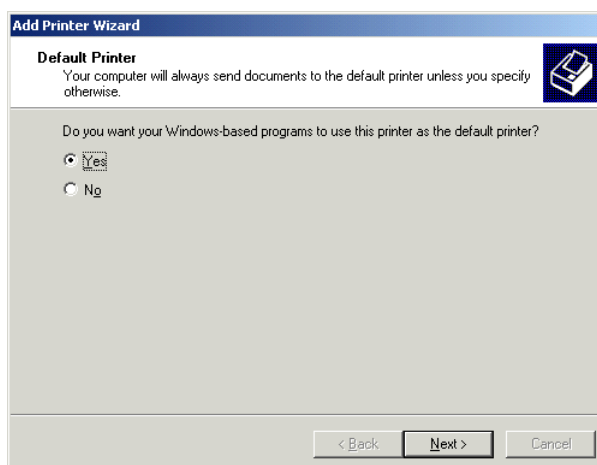
- i. Click the **[Network printer]** radio button then click **[Next]**.



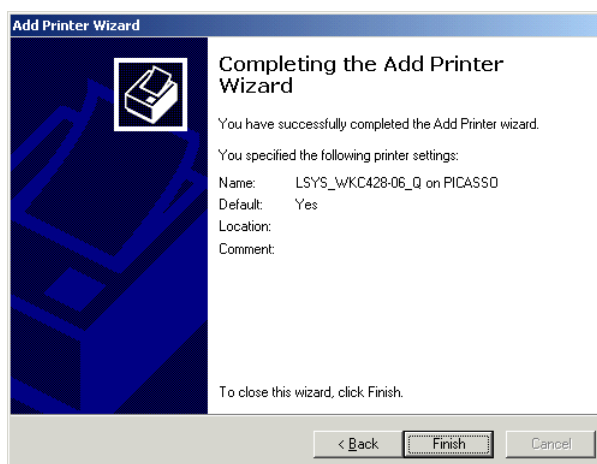
- ii. Enter the printer name and click **[Next]** or click **[Next]** to locate and choose the printer.



- iii. Click the **[Yes]** radio button to make the printer the default printer or the **[No]** radio button not to make it the default printer. Click **[Next]**.

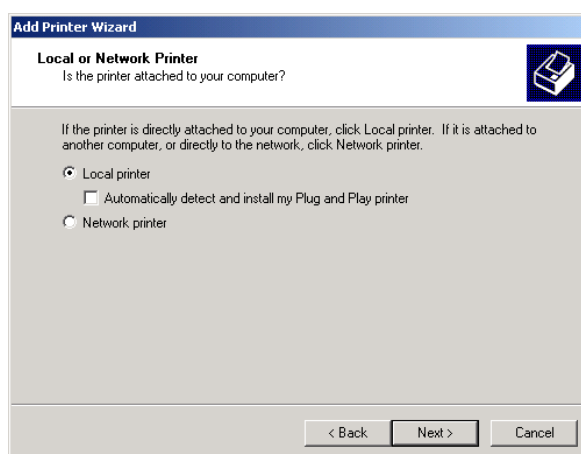


- iv. Click **[Finish]**.

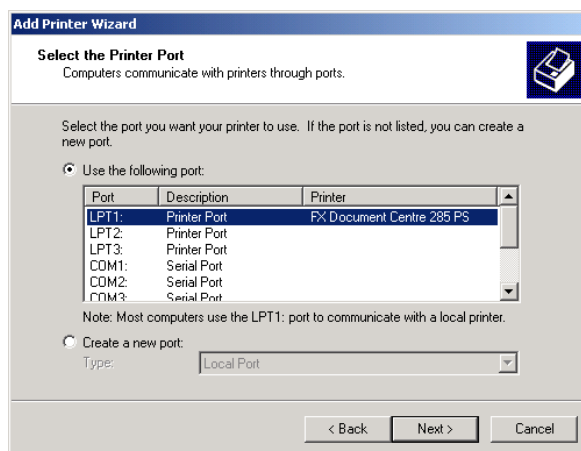


**For a locally connected printer:**

- i. Click the **[Local printer]** radio button then click **[Next]**.

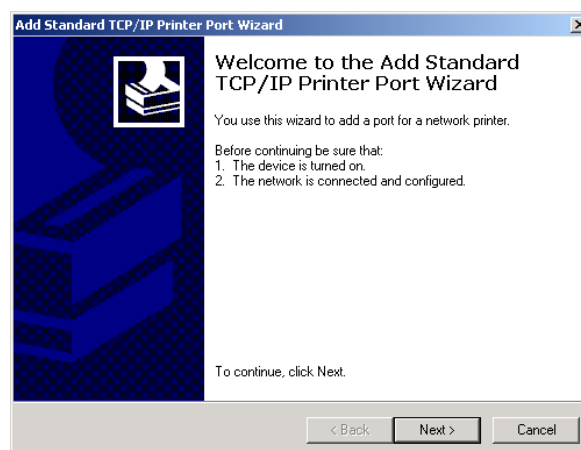


- ii. Select the port you are using and click **[Next]**.

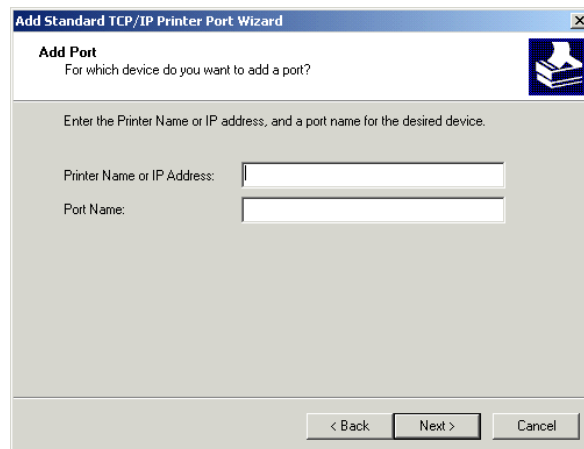


When the printer is connected in the TCP/IP(LPD) environment:

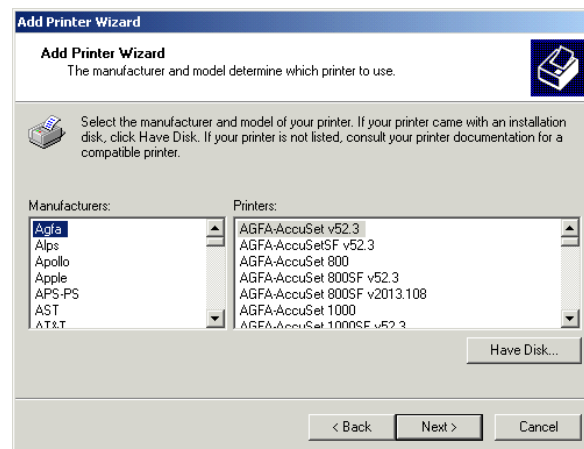
- Click **[Create a new port]**.
- Select **[Standard TCP/IP Port]** in the Type list and click **[Next]**.
- Click **[Next]**.



- Enter the IP address of the printer in Printer Name or IP Address, then click **[Next]**.



- iii. Click **[Finish]** in the dialog box that will be displayed.
16. Click **[Have Disk]**.

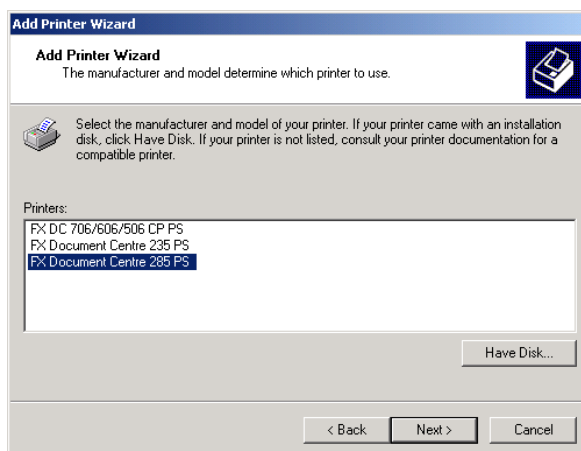


17. Browse to where the driver files were installed.  
If you installed the files on your workstation, the location will be:  
**C:\Program Files\Xerox\Xerox WorkCentre Pro 423 & 428**  
The driver file is called xrpsapeh.
18. Choose this file and click **[Open]**.
19. Click **[OK]**.

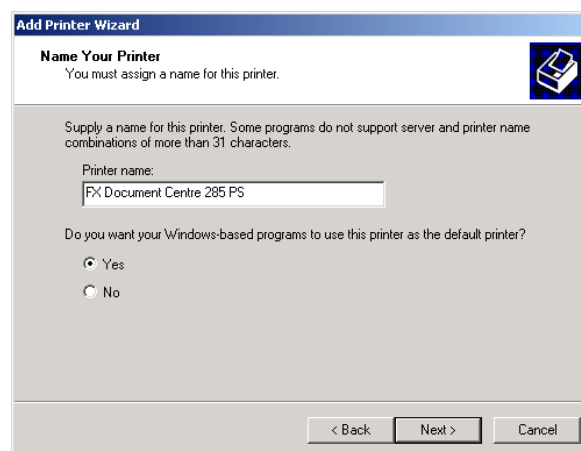




20. Select your printer model from the Printers list and click **[Next]**.

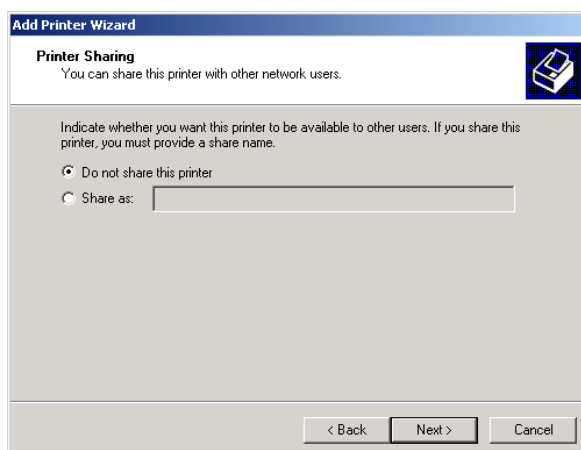


21. Enter the printer name, set whether you want to use it as the default printer, and click **[Next]**.

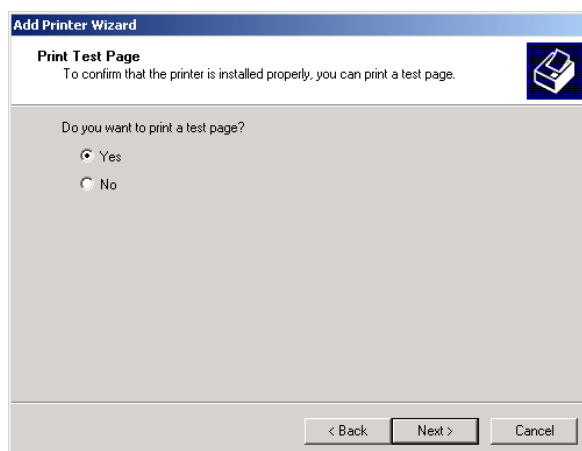


22. For local printer only, select **[Do not share this printer]** and click **[Next]**.

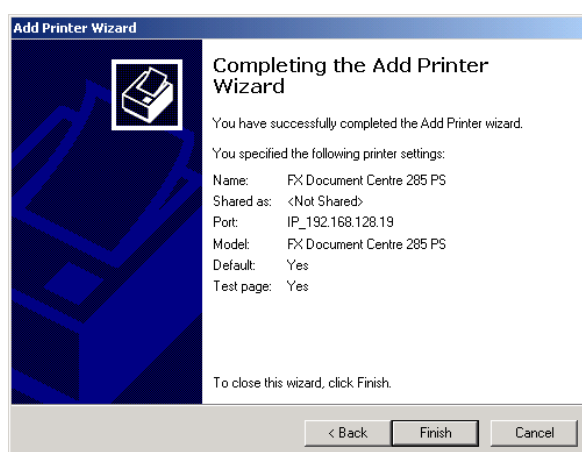
We recommend that you install the driver on each computer with the procedure appropriate to the OS.



23. Specify whether or not to print a test page, then click **[Next]**.



24. Click **[Finish]**.



**NOTE:** If the dialog box Digital Signature Not Found appears. Click **[Yes]** to continue the installation.

Installation begins.

25. Confirm that the printer has been added in the Printers window.



This completes the installation of the printer driver. Remove the CD-ROM from the drive.

See *“Device Options and Print Settings”* on page 5-14 to set up the printer.

Store your CD-ROM in a safe place.

## Device Options and Print Settings

---

This section describes the settings specific to the printer, which are among the settings to be made using the printer driver properties. For other items, refer to the Help.

- Installable Options in the Device Settings Tab
- Configuration Tab
- Sections Specific to the Printer in Printer Features of the Advanced Options Dialog Box
- Output Settings Tab

See *“How to Use Help”* on page 5-20 for details about how to use Help.

To view the Device Settings or Configuration tab, select the printer in the Printers window, then click Properties on the File menu.

To view the Advanced Options dialog box, select the printer in the Printers window, then click Printing Preferences on the File menu. Click Advanced in the Layout screen.

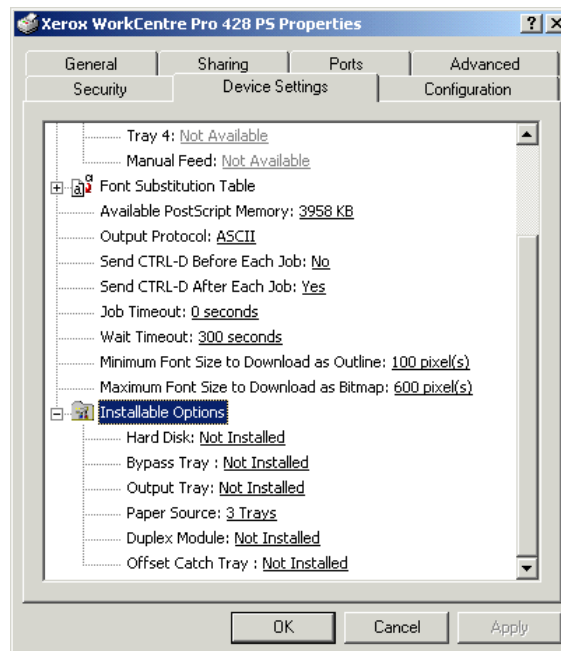
To view the Output Settings tab, select the printer in the Printers window, then click Printing Preferences on the File menu.

## Device Settings Tab Settings

---

This describes Installable Options in the Device Settings tab. To print correctly, it is necessary to make the appropriate settings in this tab.

Select the items in Installable Options and change the settings in the menu that appears on the right.



## Settings

**Hard Disk** - Specifies whether the printer HDD kit is installed.

Select Installed when the printer HDD kit is installed.

**Bypass Tray** - Specifies whether a bypass tray is installed.

**Output Tray** - Specifies whether an output tray is installed, as well as its type.

**Paper Source** - Select 4 Trays when the additional tray kit is installed.

**Duplex Module** - Specifies whether a duplex unit is installed.

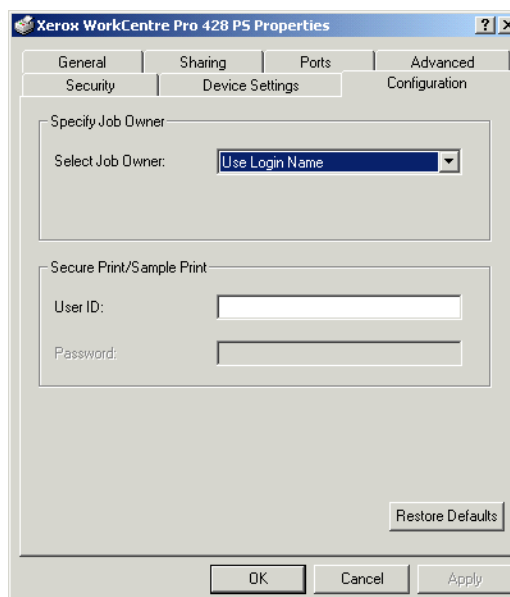
Select Installed if the duplex unit is installed. When you select Installed, it is possible to set the Duplex Print feature in the Layout tab.

**Offset Catch Tray** - Specifies whether an offset catch tray is installed.

Select Installed when an offset catch tray is installed. When you select Installed, it is possible to set Job Offset in the Advanced Options dialog box.

## Configuration Tab Settings

This section describes the settings of the Configuration tab.



**NOTE:** You can restore defaults by clicking Restore Defaults.

### Specify Job Owner

The following selections are available:

**Use Login Name** - Use your Windows Login Name as the job owner name. The job owner name becomes the "Login User Name\Host Name". You can use up to 31 characters for the login name. If it exceeds 31 characters, only the first 31 characters are used.

**Enter Owner Name** - Select this when you want to specify a custom job owner name. Enter any job owner name in the Job Owner Name box. Up to 31 characters can be entered for the job owner name. If it exceeds 31 characters, only the first 31 characters are used. By default, this is "Unknown User".

## Secure Print/Sample Print

**User ID** - Secure Print/Sample Print is effective when an optional printer HDD kit is installed. This item does not appear unless Installed is selected for Hard Disk in the Device Settings tab.

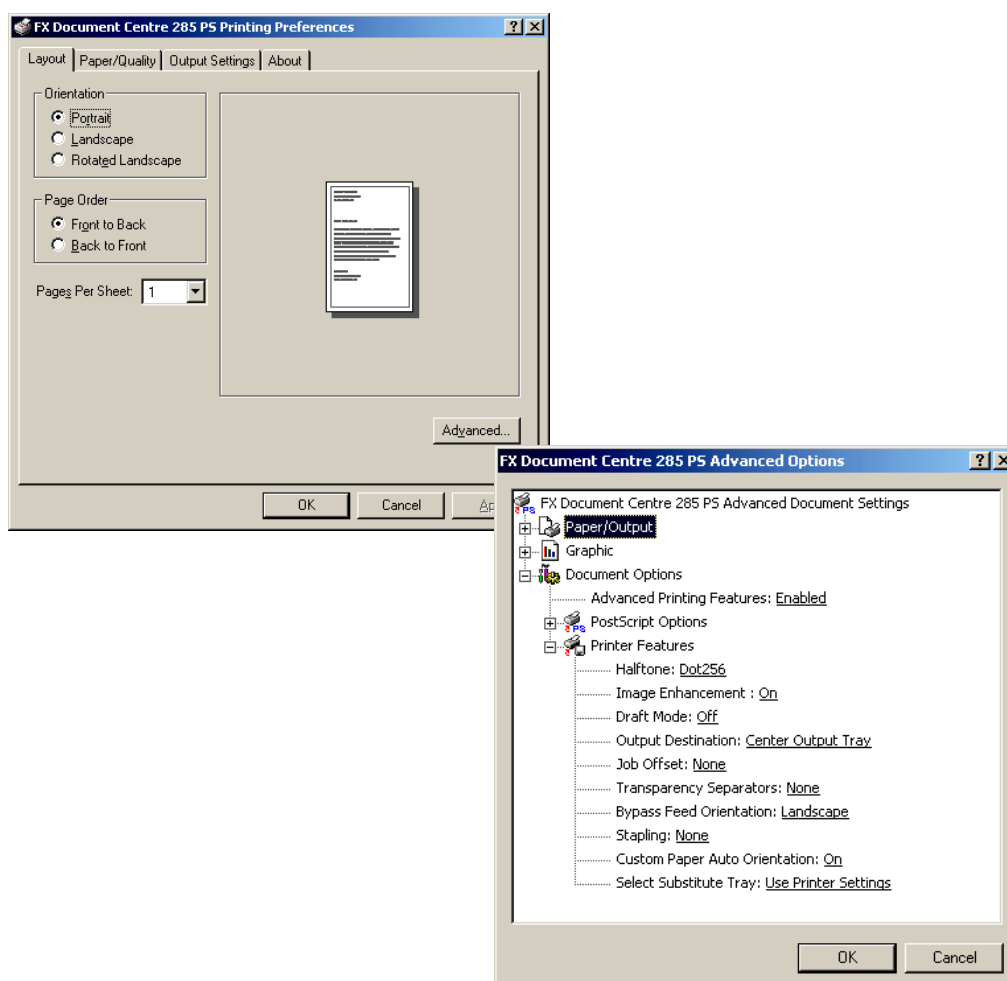
Specify the User ID of Secure Print or Sample Set with a maximum of 24 alphanumeric characters. When the User ID is already specified, it is displayed in the edit box.

**Password** - If you are using Secure Print, you also need to enter a password. You can enter up to four digits and each input digit appears as an asterisk.

## Advanced Options Dialog Box Settings

This section describes the settings of the Advanced Options dialog box displayed when clicking Advanced in the Layout tab.

Select the items from Printer Features and change them on the menu displayed to the right.



## Settings

**Halftone** - Selects the type of halftone.

When it is possible to adjust halftones in the application, this setting may be disabled.

**Image Enhancement** - Specifies whether to use the Image Enhancement function.

Selecting On smooths the boundaries between black and white when printing. This reduces the jagged edges, thereby artificially increasing the resolution of the image. When printing an image (bitmap) composed of coarse halftone dots, smooth color gradation is impossible in certain situations. In this case, select Off.

**Draft Mode** - Specifies whether to reduce the amount of toner used when printing drafts.

When you select On, the overall printed color becomes lighter. This is best for printing documents when print quality is not necessary.

**Output Destination** - Specifies the output destination.

---

**NOTE:** The items that can be selected vary according to whether the optional side tray kit or finisher has been installed.

---

**Job Offset** - Shifting the output positions of adjacent jobs (print command) or copies (sets) is called Job Offset. The position of the previous job or set of copies is shifted to the front and the next job or set of copies is shifted to the back.

**Transparency Dividers** - Specifies whether or not to use transparency dividers and the source of the dividers, if selected.

Select Auto for the paper source to automatically feed from the paper tray with paper of the same size and in the same orientation as transparencies.

---

**NOTE:** When using Transparency Dividers, be sure to load paper of the same size and in the same orientation as transparencies into the paper tray.

---



---

**NOTE:** The Transparency Dividers function cannot be used in the following situations:

---

- When anything other than Manual Feed is selected for Paper Source in the Paper/Quality tab.
- When anything other than Transparency is selected for Media in the Paper/Quality tab.
- When anything other than Center Output Tray is selected for Output Destination in the Advanced Options tab.
- When the Duplex feature is selected in the Layout tab.

**Bypass Feed Orientation** - Specifies the paper orientation when printing from the bypass tray. When you set the short edge of the paper in the bypass tray feed direction, select Landscape. When you set the long edge of the paper in the bypass tray, select Portrait.

**Stapling** - Specifies whether to staple printed documents as well as the position of the staple.

---

**NOTE:** You can staple 2 to 30 sheets.

---



---

**NOTE:** You cannot use staples in the following situations:

---

- When anything other than Finisher Tray is selected for Output Destination in the Advanced Options tab.
- When Job Offset is selected.

**Custom Paper Auto Orientation** - Specifies whether to correct the paper orientation when printing on custom paper.

When printing with custom paper, select On to correct the orientation rotated at 90 degrees.

**Select Substitute Tray** - Specifies what action to take when the paper for the print size is not loaded in the machine.

**Use Printer Settings** - Uses the printer setting. The settings can be confirmed on the printer control panel.

**Display message** - Displays paper supply messages on the printer control panel. Printing is unavailable until paper is supplied.

**Use Nearest Size (with Zoom)** - Selects the nearest paper size and prints. Automatically reduces images for printing, as necessary.

**Use Nearest Size (no Zoom)** - Selects the nearest paper size and prints in an equal size.

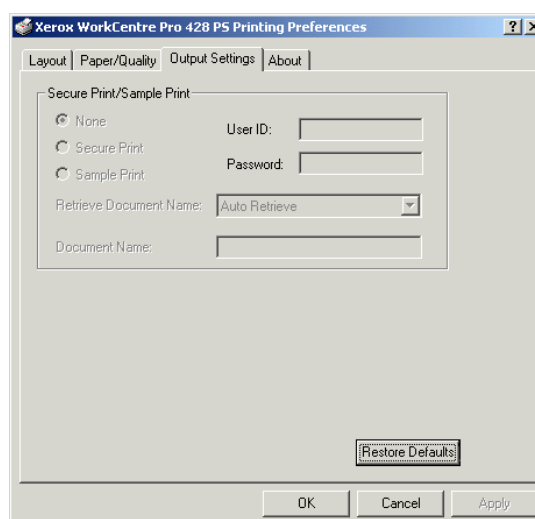
**Use Larger Size (with Zoom)** - Prints in an equal size on paper larger than the original. Automatically reduces images for printing, as necessary.

**Use Larger Size (no Zoom)** - Prints in an equal size on paper larger than the original.

## Output Settings Tab Settings

---

This section describes the Output Settings tab.



---

**NOTE:** You can restore defaults by clicking Restore Defaults.

---

### Secure Print/Sample Print

---

Secure Print is a function that temporarily stores print jobs in the printer, then prints them when instructed from the printer control panel.

Sample Print is a function that outputs only 1 copy when multiple copies are specified. If there is no problem, it outputs the remaining sets of copies.

By setting Secure Print/Sample Print in the Configuration tab, the setting values appear in User ID or Password, allowing you to output secure prints/sample prints.



---

**NOTE:** Secure Print/Sample Print is effective when an optional printer HDD kit is installed.

---

See “*User Guide (Printer)*” for details of the operation at the printer.

**None** - Select when you do not want to output secure prints/sample prints.

**Secure Print** - Select when you want to output secure prints.

**Sample Print** - Select when you want to output sample prints.

---

**NOTE:** The Collated feature must be selected on the Advanced Options tab when using Sample Print.

---

**User ID** - Displays the User ID for Secure Print or Sample Print. The user ID displayed is the User ID specified on the Configuration tab. This option can only be selected when the setting on the Configuration tab has been completed. This is a display-only item and cannot be changed here.

**Password** - Displays the password for Secure Print specified on the Configuration tab. Each digit is represented by an asterisk. This option can only be selected when the setting on the Configuration tab has been completed. This is a display-only item and cannot be changed here.

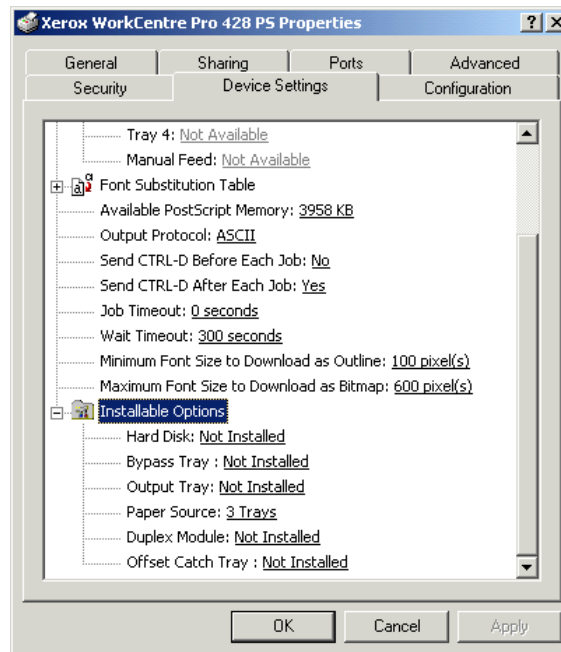
**Retrieve Document Name** - Select the method of specifying the document name. If you have selected Auto Retrieve, the valid document name can be up to 24 alphanumeric characters.

**Document Name** - When “Enter Document Name” is selected in the Retrieve Document Name list, you can specify a document name with a maximum of 24 alphanumeric characters.

# How to Use Help

---

The following describes how to use Help.



1. Click **?** and a ? mark appears next to the pointer. You can then click items for which you need explanations, opening a pop-up window that contains relevant information. Click inside the pop-up window to close it.
2. Click **[Help]**, an explanation of the current tab appears as Help information.

# 6 *Operation on Macintosh Computers*

- About the Software
  - Bundled Software
  - Hardware/Software Requirements
- Installing the AdobePS Printer Driver
  - Installation Procedure
  - Setting the Printer Driver
- Options
  - Configure Settings
  - Printer Specific Options Settings
- Installing the Screen Fonts
- Xerox PS Utility
  - Installing the Xerox PS Utility
  - Uninstalling the Xerox PS Utility
  - Using the Xerox PS Utility

## About the Software

---

This section describes the Macintosh software bundled on the PostScript Driver Library CD-ROM.

**NOTE:** When using AppleTalk protocol to print from Macintosh, set the EtherTalk port to Enable on the printer control panel.

---

## Bundled Software

---

Insert the CD-ROM and double-click the XOPS-PS icon to display the Window. The following items are contained in the folder:

**AdobePS Printer Driver (ver. 8.5.1, 8.7.0, and 8.7.1) and PPD files** - Adobe PostScript driver and PPD files (for Macintosh).

**Xerox PS Utility** - Enables you to define your printer settings.

**Adobe Screen Fonts** - Contains 117 PostScript fonts and 19 TrueType fonts, which are standard for PostScript 3 printers. In addition, 37 PostScript fonts of Central European (CE) character set are included.

**ATM (Adobe Type Manager)** - Helps you to install typefaces, activate and manage your fonts. Two versions of ATM, versions 4.0.2 and 4.5.2, are included for Macintosh. Use version 4.5.2 when your operating system is Mac OS 9.0.

**Adobe Acrobat Reader** - Allows you to view and print PDF files on all major computing platforms.

**Readme.txt** - Contains cautionary notes about how to use the printer driver. Be sure to read this before use.

## Hardware/Software Requirements

---

The minimum system requirements for the Macintosh printer driver and the utility are described below.

### Computer System

---

- **For AdobePS 8.5.1** - Mac OS 7.1 or later
- **For AdobePS 8.7** - An Apple Power Macintosh computer running System 8.1 or later
- **For AdobePS 8.7.1** - Mac OS 8.6 through 9.1
- 4 MBytes or more of available RAM (32 MBytes recommended)
- 2.1 MBytes of available hard-disk space (4 MBytes recommended)

## Installing the AdobePS Printer Driver

This section describes how to install the Adobe printer driver and how to set the printer driver for this machine. There are two steps to install the printer driver. Firstly, use the installer enclosed in the CD-ROM to install the printer to the Macintosh. Then, configure the printer driver according to the printer used.

### Installation Procedure

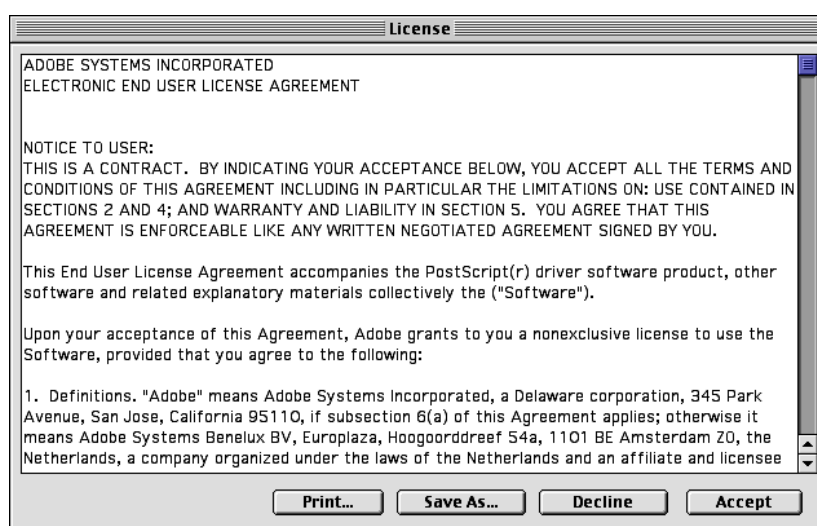
This section describes the procedures for installing the AdobePS printer driver.

As an example, here is the procedure to install AdobePS 8.7.1.

1. Insert the PostScript Driver Library CD-ROM in the CD-ROM drive.  
The PostScript icon appears on the desktop.
2. Double-click the PostScript icon.
3. Double-click the **[DC423]** or **[DC428]** folder depending on your printer model, and then the "AdobePS871" folder.
4. Double-click **[AdobePS Installer 8.7.1]**.
5. Click **[Continue]**.

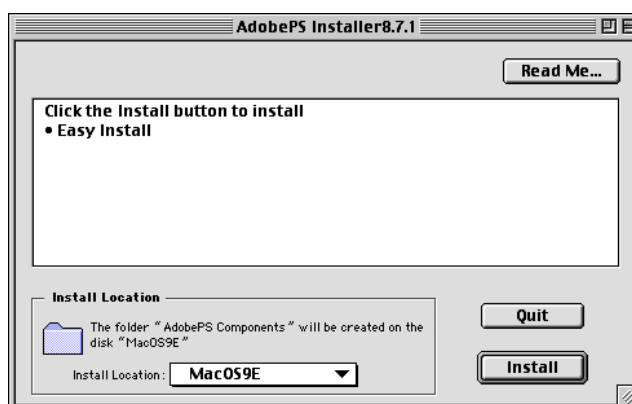


6. Read through the license agreement carefully and if you have no objections to it, click **[Accept]**.



Read the Read Me displayed, then click **[Continue]**.

7. Confirm the Install Location and change it if necessary, then click Install.



Installation begins.

When installation is complete, the dialog box appears.

8. Click **[Quit]**.



This completes installation.

Proceed to *“Setting the Printer Driver”* on page 6-5 to continue.

## Setting the Printer Driver

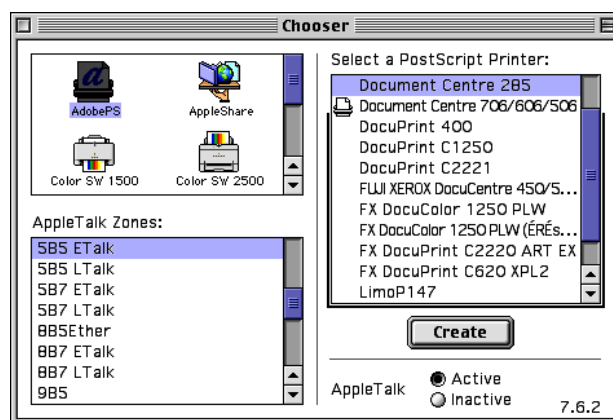
When you finish installing the AdobePS printer driver, set the PostScript Printer Description (PPD) file for this machine to the printer driver.

The printer driver controls the functions of this machine based on the information in the PPD file.

1. Make sure that the machine is on.
2. Check that the machine's EtherTalk port is set to Enable.

You can check the EtherTalk settings in the Printer Settings List. See *"User Guide (Printer)"* for details about how to print the Printer Settings List.

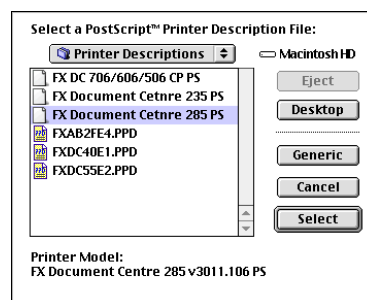
3. On the Apple menu select **[Chooser]**, then click **[AdobePS]**.
4. Select your printer from the Select a PostScript Printer list box, which appears to the right of the Chooser, then click **[Create]**.



This automatically searches for the printer and sets the PPD file.

If the search for the PPD file is not automatically performed

- Click **Select PPD**.
- Select your printer model in the list, then click **[Select]**.



The PPD file for this machine is set.



5. Click **[Configure]** to set the options.

See “Options” on page 6-7 for details about the options.

---

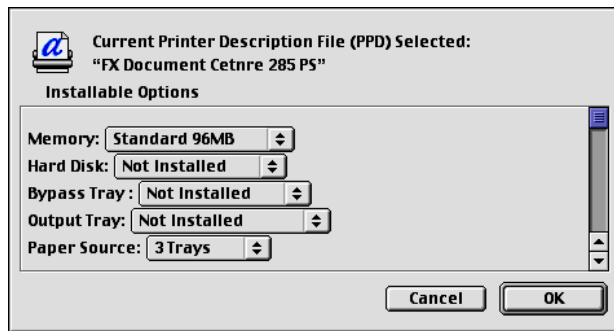
**NOTE:** You can change the print settings after you install the printer driver.

---

---

**NOTE:** To use the function of the options, it is necessary to set Configure. Always set this according to the configuration of your machine. Also, Installable Options should normally be set automatically according to the bi-directional communications with this machine. You do not have to change the settings.

---



6. Click **[OK]**. Click **[OK]** once more in the screen displayed.

7. Close the Chooser.



## Options

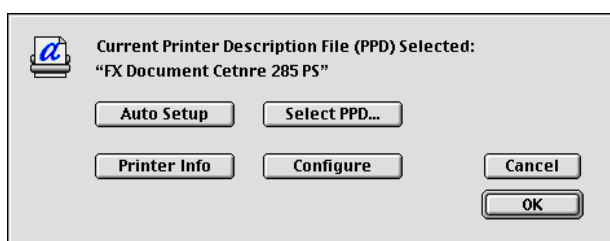
This section describes the Configure in the Chooser and the Printer Specific Options of the printer driver.

### Configure Settings

This section describes Installable Options. To print correctly, these settings must be correct.

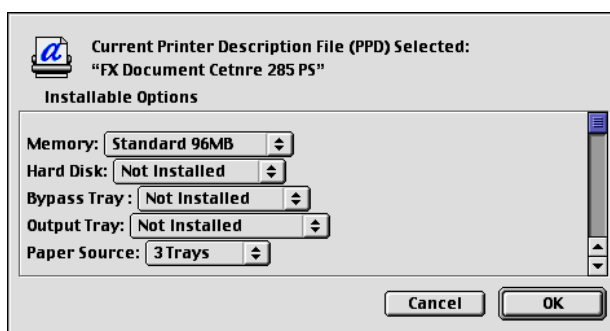
**NOTE:** Normally, Installable Options is automatically set according to the bi-directional communications with this machine. You do not have to change the settings.

1. Select the printer using the Chooser and click **[Setup]**.  
The Current Printer Description File (PPD) Selected dialog box appears.
2. Click **[Configure]**.



The Installable Options list appears.

3. Set the option menu items in Installable Options, and click **[OK]**.



### Settings

This section describes the items to set in Installable Options.

**Memory** - The printer memory is fixed at Standard 96 MB.

**Hard Disk** - Specifies whether the printer HDD kit is installed.

Select Installed when the printer HDD kit is installed.

When you select Installed, it is possible to set Collated in Printer Specific Options.

**Bypass Tray** - Specifies whether a bypass tray is installed.

**Output Tray** - Specifies whether an output tray is installed, as well as its type.

**Paper Source** - Select 4 Trays when the additional tray kit is installed.

**Duplex Module** - Specifies whether a duplex unit is installed.

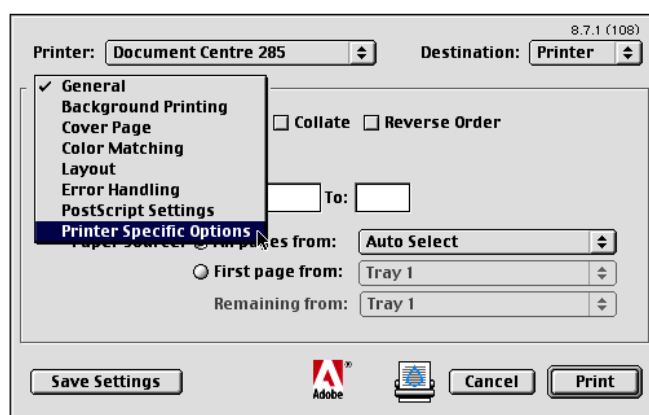
Select Installed when the duplex unit is installed. When you select Installed, it is possible to set the Duplex Print feature.

**Offset Catch Tray** - Specifies whether an offset catch tray is installed. Select Installed when an offset catch tray is installed. When you select Installed, it is possible to set Job Offset in Printer Specific Options.

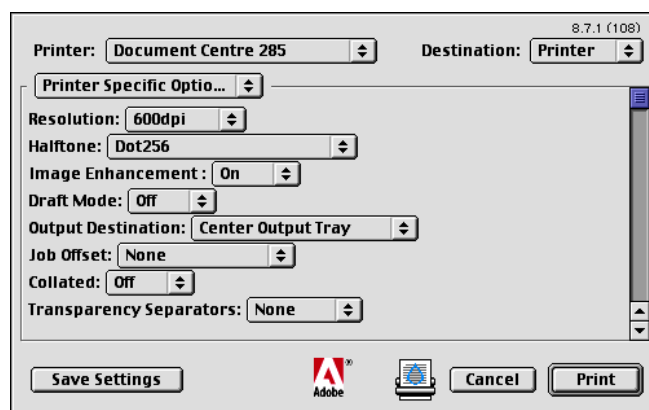
## Printer Specific Options Settings

This section describes Printer Specific Options, used to set the printer driver.

1. On the File menu of the application, click **[Print]**.  
The Print dialog box appears.
2. Select **[Printer Specific Options]**.



3. Specify the functions that you want to set.



## Settings

This section describes the settings of the Printer Specific Options list. The settings that can be selected vary depending on which options have been installed. Make these settings after specifying the installed options in Configure.

See "Configure Settings" on page 6-7.

**Resolution** - Displays the resolution. The resolution of this machine is fixed at 600 dpi.

**Halftone** - Specifies the type of halftone.

When halftones can be adjusted in the application, this setting may be disabled.

**Image Enhancement** - Selects whether to use the Image Enhancement function.

Selecting On smooths the boundaries between black and white when printing. This reduces the jagged edges, thereby artificially increasing the resolution of the image. When printing an image (bitmap) composed of coarse halftone dots, smooth color gradation is impossible in certain situations. In this case, select Off.

**Draft Mode** - Specifies whether to reduce the amount of toner used when printing drafts.

When you select On, the overall printed color becomes lighter. This is best for printing documents when print quality is not necessary.

**Output Destination** - Specifies the output destination.

---

**NOTE:** The items that can be selected vary according to whether the optional side tray kit or finisher has been installed.

---

**Job Offset** - Shifting the output positions of adjacent jobs (print command) or copies (sets) is called Job Offset. The positions of the adjacent jobs or sets of copies are shifted to either sides of the output tray.

**Collated** - Selects whether to collate a multiple-page file per set when they are printed.

This function is enabled when the printer HDD kit is installed.

**Transparency Dividers** - Specifies whether to use transparency dividers and the source of the dividers, if selected.

Select Auto for the paper source to automatically feed from the paper tray with paper of the same size and in the same orientation as transparencies.

---

**NOTE:** When using Transparency Dividers, be sure to load paper of the same size and in the same orientation as transparencies into the paper tray.

---



---

**NOTE:** The Transparency Divider function cannot be used in the following situations:

---

- When anything other than Bypass Tray is selected for Paper Source in the General tab.
- When anything other than Transparency is selected for the Bypass Tray Paper Type in the Printer Specific Options.
- When anything other than Center Output Tray is selected for Output Destination.
- When Print on Both Sides is selected.

**Bypass Feed Orientation** - Specifies the paper orientation when printing from the bypass tray. When you set the short edge of the paper in the bypass tray feed direction, select Landscape. When you set the long edge of the paper in the bypass tray, select Portrait.

**Bypass Tray Paper Type** - Selects the type of paper set in the bypass tray when using the bypass tray.

**Stapling** - Specifies whether to staple printed documents as well as the position of the staple.

---

**NOTE:** You can staple 2 to 30 sheets.

---

---

**NOTE:** You cannot use staples in the following situations.

---

- When anything other than Finisher Tray is selected for Output Destination.
- When Job Offset is selected.

**Custom Paper Auto Orientation** - Specifies whether to correct the paper orientation when printing on custom paper.

Select On when printing on custom-size paper when the printing result is shifted at 90 degrees.

**Select Substitute Tray** - Specifies what action to take when the paper for the print size is not loaded in the machine.

**Use Printer Settings** - Uses the printer setting. The settings can be confirmed on the printer control panel.

**Display message** - Displays paper supply messages on the printer control panel. Printing is unavailable until paper is supplied.

**Use Nearest Size (with Zoom)** - Selects the nearest paper size and prints. Automatically reduces images for printing, as necessary.

**Use Nearest Size (no Zoom)** - Selects the nearest paper size and prints in an equal size.

**Use Larger Size (with Zoom)** - Prints in an equal size on paper larger than the original. Automatically reduces images for printing, as necessary.

**Use Larger Size (no Zoom)** - Prints in an equal size on paper larger than the original.

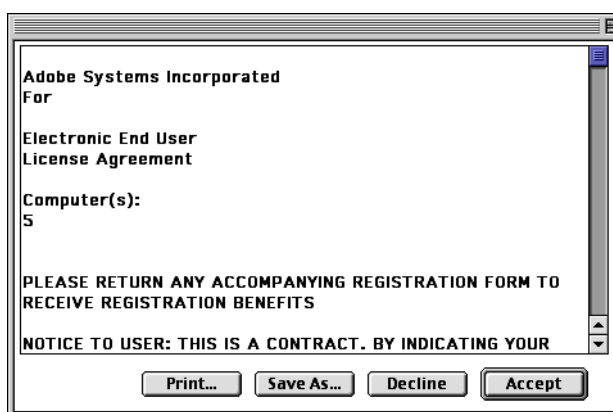
## Installing the Screen Fonts

This section explains how to install the fonts in the Screen Font folder. It is recommended to close all other applications before installing the fonts. Otherwise, a warning message appears between steps 5 and 6.

1. Start Macintosh and insert the PostScript Driver Library CD-ROM into the CD-ROM drive.
2. Double-click the **[XOPS-PS]** icon followed by the Screen Font folder and then the PS3FontsInstaller icon. The following window appears:



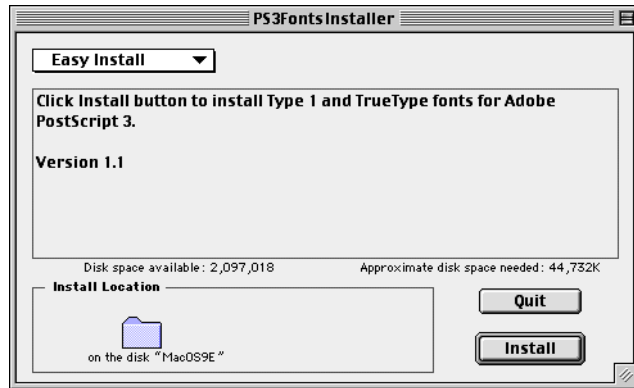
3. Click **[Continue]**.  
The license agreement dialog appears.
4. Read through the agreement carefully and if you have no objections to it, click **[Accept]**.



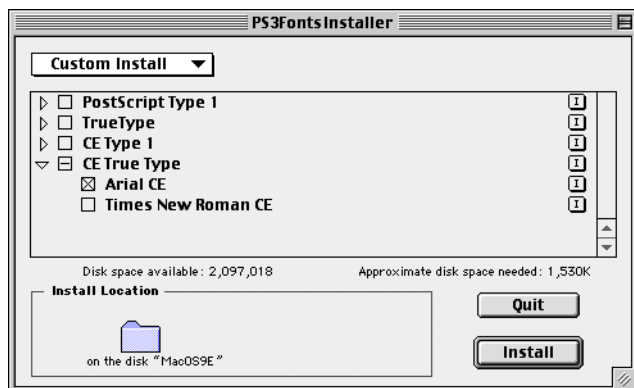
The PS3FontsInstaller dialog box appears.

5. You may select **[Easy Install]** or **[Custom Install]**.

**Easy Install** installs all the fonts provided in the Screen Font folder.



**Custom Install** installs the selected fonts only. Simply click on the triangle arrow beside the four categories of fonts to display the fonts in each category and then check the fonts to be installed. For example, the diagram below shows that Arial CE of the CE TrueType fonts is selected.



A warning message will appear if you did not quit all other applications before performing the font installation.

6. Click Install.

The installation of the fonts begins.

After the installation, you have to restart your Macintosh before the fonts can be used.

Store your CD-ROM in a safe place.

## Xerox PS Utility

---

You can set the printer from your Macintosh using the Xerox PS Utility. This section describes how to install, remove, and use the Xerox PS Utility.

---

**NOTE:** When using the Xerox PS Utility, set the printer's EtherTalk port status to Enable and make sure that the printer is set correctly in the Chooser. See "User Guide (Printer)" for details on setting the port.

---

### Installing the Xerox PS Utility

---

The installation procedure is described below.

1. Insert the PostScript Driver Library CD-ROM in the CD-ROM drive.  
The XOPS-PS icon appears on the desktop.
2. Double-click the **[XOPS-PS]** icon.  
The XOPS-PS window opens.
3. Copy the Xerox PS Utility folder to the Macintosh hard disk.  
The Xerox PS Utility is installed.

See "Using the Xerox PS Utility" on page 6-14 for details about how to use the Xerox PS Utility.

Store your CD-ROM in a safe place.

### Uninstalling the Xerox PS Utility

---

1. Move the Xerox PS Utility folder from the Macintosh hard disk to the Trash icon.  
The Xerox PS Utility is removed.

## Using the Xerox PS Utility

---

You can download PS files to the machine, and set the printer name and EtherTalk zones with the Xerox PS Utility. This section describes how to activate and use the Xerox PS Utility.

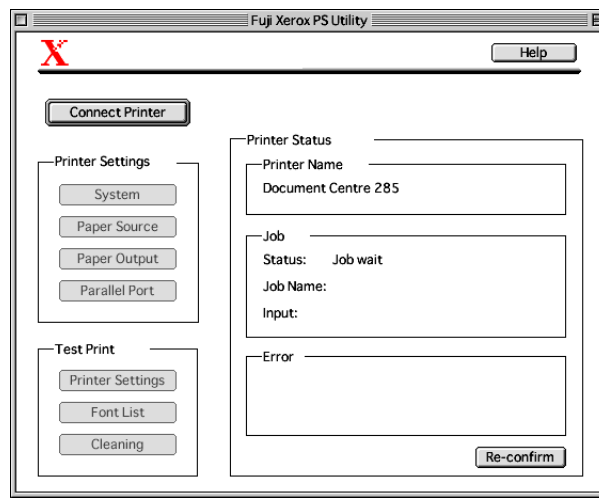
You need to install the Xerox PS Utility. See *“Installing the Xerox PS Utility”* on page 6-13 for details about how to install the Xerox PS Utility.

### Activating the Xerox PS Utility

---

1. Double-click Xerox PS Utility in the Xerox PS Utility folder.

The Xerox PS Utility main window appears. Use the menu bar or the button to use it.



To exit the Xerox PS Utility, click Quit on the File menu.

### Specifying the Printer Settings

---

1. Specify the printer settings.

For details on the individual items, click **[Help]**.

**Download PS File** - Select the **[Download PS file]** command from the File menu.

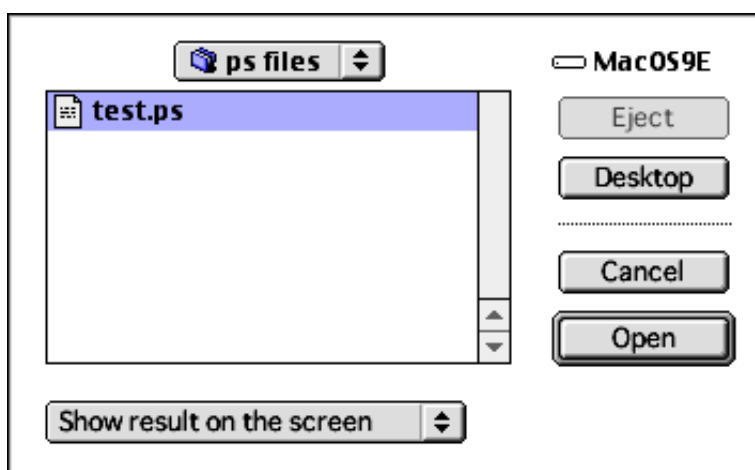
This command downloads the PostScript file to your printer for printing. Locate the file to be downloaded to the printer and click Open. You may select whether to display the result on the screen or save it to file.



---

**NOTE:** You may download the PS file even when the Connect Printer button on the Xerox PS Utility window is not clicked.

---

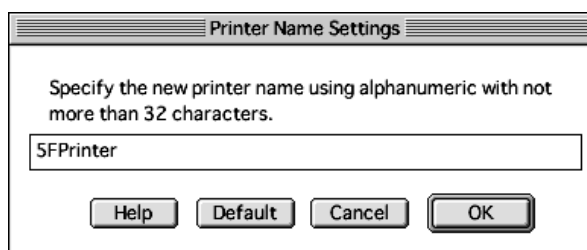


**Printer Name** - The Printer Name Settings window is displayed by selecting the Printer Name command from the Settings menu. You may change the printer name in this window.

---

**NOTE:** You may change the printer name even when the Connect Printer button on the Xerox PS Utility window is not clicked. In order to do so, you have to make sure that the printer name you want to change is selected in the Chooser first, before you activate the Xerox PS Utility.

---



**EtherTalk** - The EtherTalk Zone Settings window is displayed by selecting the EtherTalk command from the Settings menu. The EtherTalk Zone Settings window enables you to confirm the current EtherTalk zone and to change it.

---

**NOTE:** You may access the Ethernalk Zone Settings window and change the settings even when the Connect Printer button on the Xerox PS Utility window is not clicked.

---

You cannot specify any zone displayed in the list with a name longer than 32 characters.

2. After you have specified the individual items, click **[OK]**.  
Update the printer settings and return to the main window.



# 7 *Cautions and Limitations*

## **About the driver**

---

Cautions and limitations relating to each type of driver are listed Readme.txt in the PostScript Driver Library CD-ROM. Be sure to read it before installing the driver.

## **Installing this PostScript kit**

---

You must install the 64 MB SDRAM kit to use this PostScript kit.

## **Troubleshooting**

---

See “*User Guide (Printer)*” for error codes and error messages displayed on the printer control panel. See “*User Guide (Copier)*” for how to deal with paper jams.

## **Print operation**

---

The printer driver allows you to make selections to print on custom paper and postcard using duplex and/or stapling feature to the Finisher Tray. However, these features are actually not available for printing with the custom paper and postcard.

You can feed custom paper from the bypass tray only. However, when you select custom paper, the Paper Source selection does not change to Manual Feed automatically. Please select Manual Feed yourself.



## A

Adobe Acrobat Reader **6-2**  
Adobe Communication Protocol **2-4**  
Adobe Type Manager **3-2, 4-2, 6-2**  
AdobePS Printer Driver (ver. 5.1.x) **4-2**  
AdobePS Printer Driver (ver. 8.5.1, 8.7.0, and 8.7.1) **6-2**  
AdobePS Printer Driver (ver.4.4.x) **3-2**  
Advanced Options Dialog Box **5-16**  
Advanced Tab **4-15**  
Allocate Memory **2-5**

## C

Configuration Tab **3-12, 4-14, 5-15**

## D

Device Settings Tab **4-13, 5-14**  
Download PS File **6-14**

## E

error codes **7-1**  
error messages **7-1**  
EtherTalk **6-15**  
EtherTalk Buffer Size **2-5**

## I

Installing the Software PostScript Kit **1-3**

## O

Options Tab **3-12**  
Output Settings Tab **3-12, 4-17**

## P

Port Status **2-4**  
PostScript Driver Library **1-2**  
PostScript Fonts List **2-5**  
PostScript Logical Printer List **2-5**  
PostScript Logo Seal **1-2**  
PostScript Program ROM **1-2**  
PPD **3-2, 4-2, 5-2**  
PPD file **6-2**  
Print Mode **2-4**  
Printer Name **6-15**  
Printer Specific Options Settings **6-8**  
PS Memory **2-5**

## R

Readme.txt **3-2, 4-2, 5-2, 6-2**

## S

Screen Fonts **6-2**

## T

TBCP filter **2-4**

## W

Windows 2000 **5-2**  
Windows 95 **3-2**  
Windows 98 **3-2**  
Windows Me **3-2**  
Windows NT 4.0 **4-2**

## X

Xerox PS Utility **6-2, 6-14**

