

Xerox 6030/6050/6204 Wide Format BT Plot Assistant User Guide

701P44731



Version 1.4
November 2005

Xerox Corporation
Global Knowledge & Language Services
800 Phillips Road Bldg. 845-17S
Webster, NY 14580

Copyright © 2005 Xerox Corporation. All rights reserved.

Printed in the United States of America.

Copyright protection claimed includes all forms and matters of copyrighted material and information now allowed by statutory or judicial law or hereinafter granted, including without limitation, material generated from the software programs that are displayed on the screen such as styles, templates, icons, screen displays, looks, etc.

Adobe® and the Adobe logo, InDesign®, Illustrator®, PageMaker®, Photoshop®, Acrobat®, Distiller®, and the Acrobat logo are either registered trademarks or trademarks of Adobe Systems Incorporated in the United States and/or other countries.

The Creo wordmark, Creo logo, and the names of Creo products and services referred to this document are trademarks of Creo, Inc.

Macintosh, Power Macintosh, and Mac are registered trademarks of Apple Computer, Inc.

Microsoft® Windows NT® and Microsoft® Windows are trademarks of Microsoft Corporation.

PANTONE® is a registered trademark of Pantone, Inc.

Sun Microsystems and Solaris are a trademarks, registered trademarks, or service marks of Sun Microsystems, Inc. in the U.S. and other countries.

SWOP® is a registered trademark of SWOP, Inc.

Quark and QuarkXPress are trademarks of Quark, Inc. and all applicable affiliated companies, Reg. U.S. Pat. & Tm. Off. and in many other countries.

Macromedia FreeHand® is a trademark of Macromedia, Inc.

This product includes software developed by the Apache Software Foundation (<http://www.apache.org>).

This product includes software developed by the JDOM Project (<http://www.jdom.org>).

This product includes software developed by the Jaxen Project (<http://www.jaxen.org>).

XEROX®, The Document Company®, the digital X®, Xerox 6030/6050/6204 Wide Format Printers are the trademarks of or licensed to XEROX CORPORATION.

Introduction

Welcome to Xerox 6030/6050/6204 Wide Format BT-PlotAssistant User Guide.

This User Guide provides information on how to install and how to use BT-PlotAssistant. Read this guide prior to using BT-PlotAssistant to get the most effective use and for the maximum performance.

Please keep this user guide for reference, and always refer to this guide if a problem occurs during the use of BT-PlotAssistant.

If you find anything unclear about printer operations, please refer to the Xerox 6030/6050 Wide Format Printer User Guide or the Xerox 6203 Wide Format Solution User Guide.

Using This Guide

[Conventions]

The table below provides you with a description of the typefaces and symbols used in this user guide.

< > Indicates the keys on the keyboard.
key **Example** Press the <Enter> key.

[] Identifies an action to perform. It also identifies terms, a feature, an option or message.

Example *Select [On] or [Off].*
Displayed in the order of [Job], [Owner].

' ' Identifies a chapter or section for reference in the same user guide. Dialog message is displayed in the same format.

Example *Refer to '3.2 Print service'.*

" " Identifies different user guide name.

Example *Refer to "Printer User Guide".*

Important Identifies warning.

Note Identifies additional information, explanations, and helpful suggestions.

Refer to Indicates reference sources.

Table Of Contents

- Introduction
- Using This Guide
- Table Of Contents

Chapter 1 Overview

- 1.1 About BT-PlotAssistant 2
- 1.2 Operating Environment of BT-PlotAssistant 3

Chapter 2 Installation

- 2.1 How to Install BT-PlotAssistant 6
 - Precautions for installation 6
 - Install BT-PlotAssistant 6
- 2.2 How to Uninstall BT-PlotAssistant 9

Chapter 3 Basic Operation

- 3.1 How to Start/Exit BT-PlotAssistant 12
- 3.2 General Operation Guide of BT-PlotAssistant 13
 - Register Extension, Owner Name and Printer Name 15
 - Create Job Setting File 17
 - Print 20
 - Connect to PrintServices on Web 24

Chapter 4 Error Messages

- 4.1 List of Error Messages 26

Chapter 1

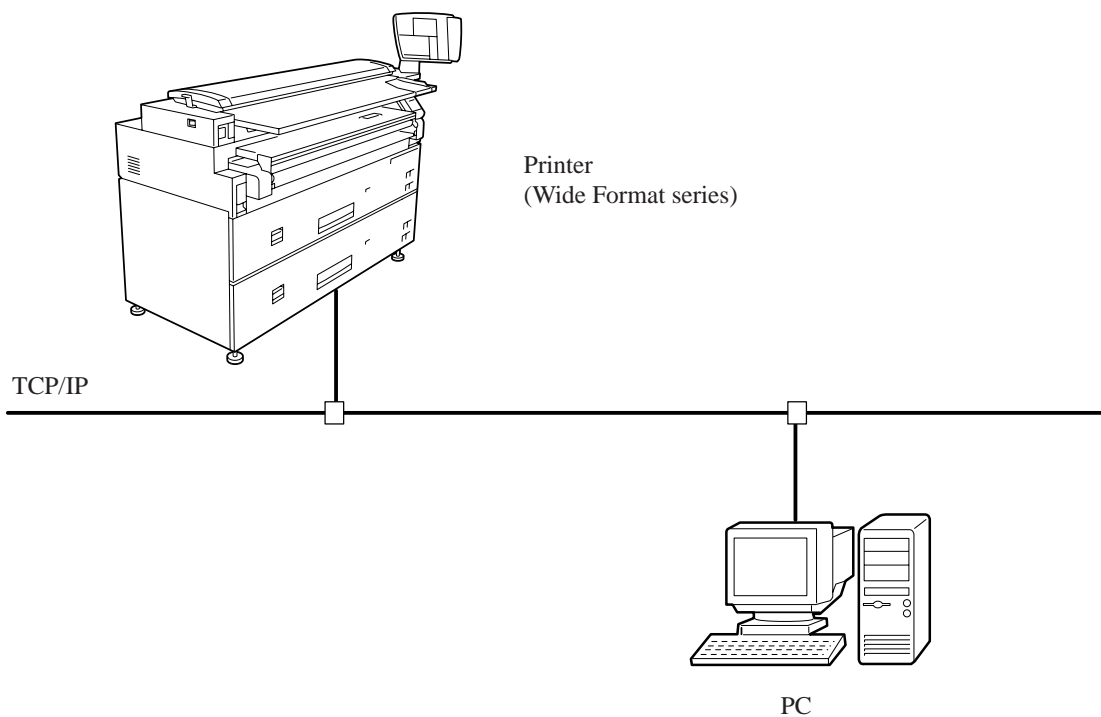
Overview

1.1

About BT-PlotAssistant

BT-PlotAssistant is a print utility software, which enables the user to send print data from a personal computer to a Xerox printer with information such as pen definition and media type. BT-PlotAssistant can be connected to the following printers.

- Xerox 6030 Wide Format
- Xerox 6050 Wide Format
- Xerox 6204 Wide Format



1.2

Operating Environment of BT-PlotAssistant

The following is the operating environment of BT-PlotAssistant.

Hardware

Minimum PC hardware requirement:

- Pentium 200MHz/over processor
- Display with 256/over colors
- Memory 64Mbyte/over
- Harddisk with 5Mbyte/over free space

Important When printing data file stored in removable media (MO, CD-ROM, etc.) or network drive, the file is temporarily copied on the hard disk. Therefore, it is required to leave free disk space for the data size.

Operating system

Supported operating system:

- Microsoft® Windows® 98 English version
- Microsoft® Windows® 2000 English version
- Microsoft® Windows® XP English version

Network

Networked computer with TCP/IP communication capability.

Note *Select [My computer] > [Control panel] > [Network], and confirm if [TCP/IP] has been added.*

Supported browser for Web Access

Either of the following browsers are required to use Print Service on Web through BT-PlotAssistant.

- Netscape® Navigator 4.0 or later version
- Microsoft® Internet Explorer 4.0 or later version

Chapter 2

Installation

2.1

How to Install BT-PlotAssistant

This section will assist you on the installation of BT-PlotAssistant.

Precautions for installation

The following are the precautions for installation.

- It is required to log in as Administrator before installing BT-PlotAssistant into Windows 2000 and Windows XP.
- Overwrite installation is not available. Check the computer before installing BT-PlotAssistant Ver.2.x that the same program has not been installed before. If BT-PlotAssistant Ver.2.x has been installed, uninstall the program before re-installation.

Refer to

Refer to '2.2 How to uninstall BT-PlotAssistant' for uninstallation procedure.

Note

BT-PlotAssistant Ver.1.x and Ver.2.x can be installed in the same computer. It is not required to uninstall BT-PlotAssistant Ver. 1.x before installing Ver.2.x.

Install BT-PlotAssistant

The following are the instructions on how to install BT-PlotAssistant.

Insert BT-PlotAssistant CD-ROM into CD drive. Installer is activated automatically. Follow the instruction messages displayed on the screen.

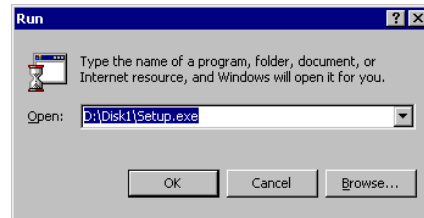
If the installer does not start automatically, follow the instructions listed on the next page.

Procedure

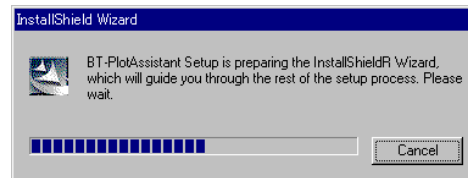
1 Select [Start] > [Run].

2 Enter 'D:/Disk1/setup.exe' and Click [OK].

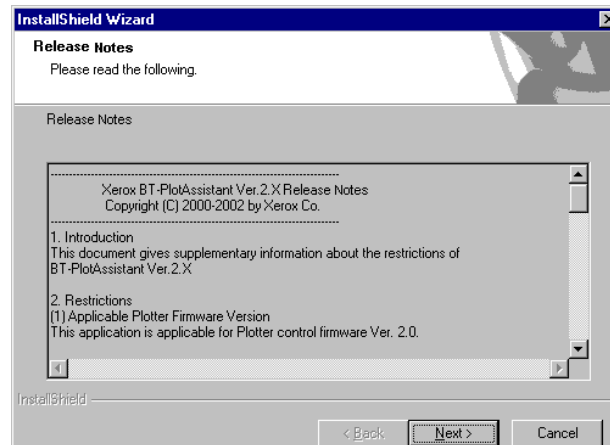
Note Enter CD-ROM drive of your computer in the space of 'D:'.



Installer is activated.

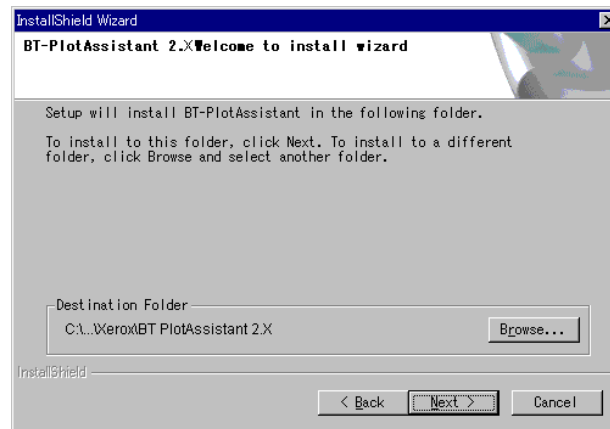


3 Confirm the message on the screen and Click [Next].

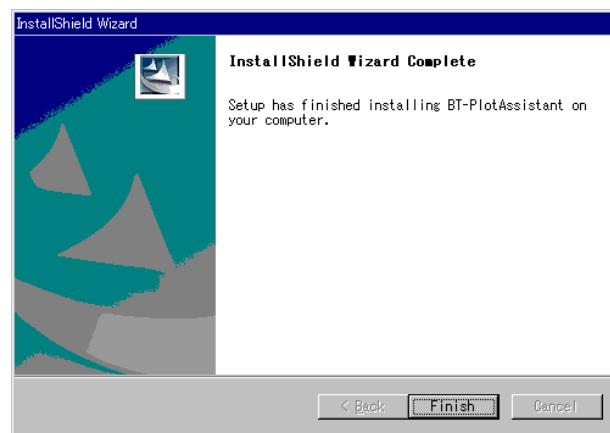


- 4** Confirm where to install the program, and Click [Next]. To change the location, Click [Browse] and Select a folder.

Note *If you do not change the setting, BT-PlotAssistant will be installed in [Xerox] folder of [Program Files] in Windows installed drive.*



- 5** Remove the BT-PlotAssistant CD-ROM from the CD-ROM drive and Click [Finish].



BT-PlotAssistant installation is completed.

Note *FTP must be enabled for BT PlotAssistant to function properly. To enable FTP, go to Print Services on Web and select Properties, [TCP/IP], then [FTP] and check the enabled box.*

2.2

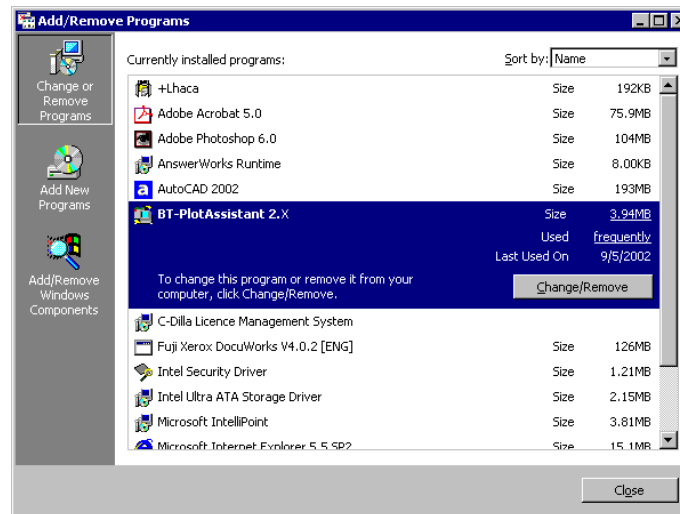
How to Uninstall BT-PlotAssistant

The following procedure is how to uninstall BT-PlotAssistant, to allow you to install an upgraded version if needed.

All files installed by BT-PlotAssistant are deleted by uninstallation. However, several files are not deleted if they are used by other applications. If these files are not used by any other application, a dialog box will be displayed to confirm if a user wants to delete the files or not.

Procedure

- 1 Select [My Computer] > [Control Panel] and Start [Add/Remove programs].
- 2 Select [BT-PlotAssistant] and Click [Change/Remove].
BT-PlotAssistant will be removed.



Note *BT-PlotAssistant Ver.1.x and Ver.2.x are installed as different applications. Even if both programs are installed on the same computer, there will be no effect if one of them is uninstalled.*

Chapter 3

Basic Operation

3.1

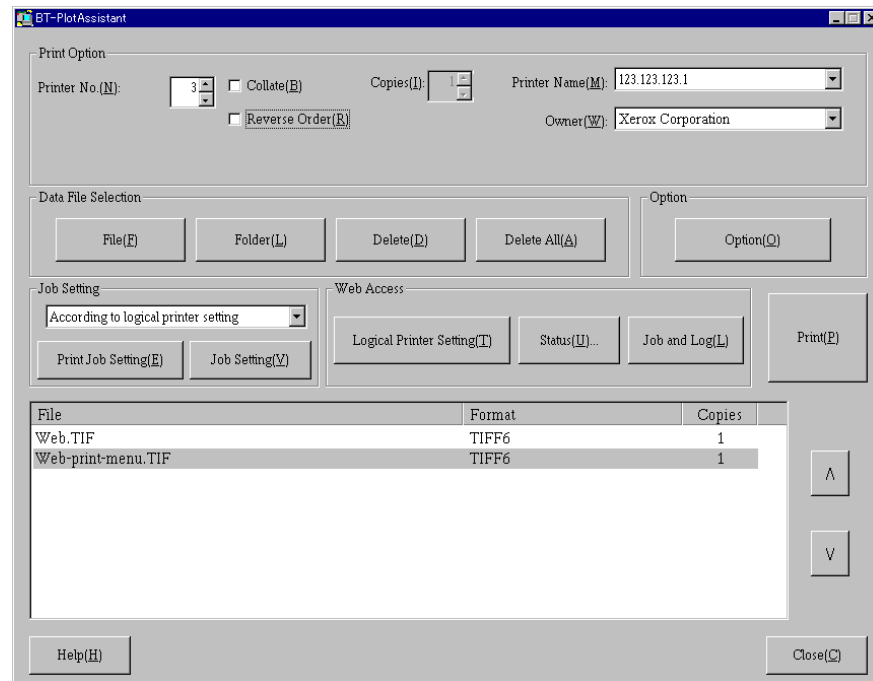
How to Start/Exit BT-PlotAssistant

This section will guide you on how to Start and Exit the BT-PlotAssistant from a PC.

Start

To start BT-PlotAssistant, Click [Start] on task bar, and Select [All Programs], [Xerox], [BT-PlotAssistant], [BT-PlotAssistant 2.x].

BT-PlotAssistant operation screen will be displayed.



Exit

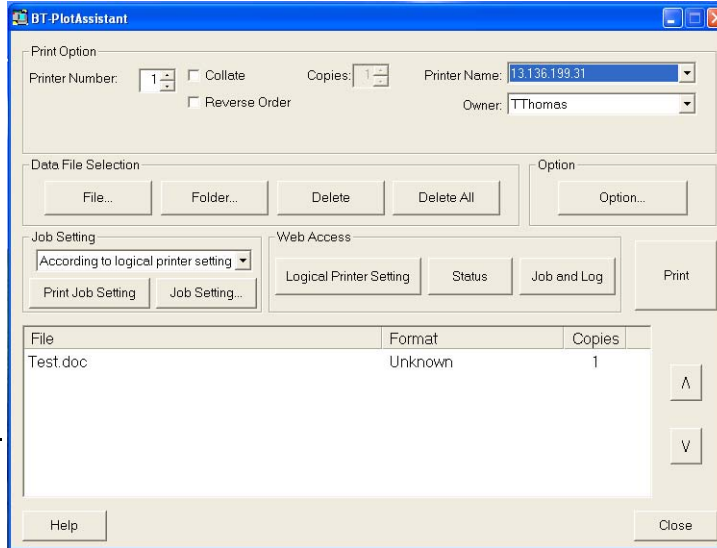
Click [Close] button, on the lower right of the screen to exit BT-PlotAssistant.

BT-PlotAssistant operation screen will be closed.

3.2

General Operation Guide of BT-PlotAssistant

This section will describe BT-PlotAssistant general functions and operations.



Print File List box

[Print Option]

This section allows the user to define output settings such as Printer Name (or IP address), Owner, and Logical Printer Number.

[Data File Selection]

This section allows the user to select a file to be printed. The selected file is displayed in the Print File List box. You can also delete the selected file from the Print File List box.

[Option]

This section allows the user to add or modify a Printer Extension, Owner name and Printer name or (IP address)

Refer to *Refer to "Register Extension, Owner Name and Printer Name" (p15).*

[Job Setting]

This section allows the user to assign or create a Job Setting. Job settings such as Media size/type and pen can be specified.

It is also used to print the contents of a specified job setting file.

Refer to *Refer to "Create Job Setting File" (p17).*

[Web Access]

This section allows the user to Connect to PrintServices on Web. The user can also view and set Logical Printer Settings, Status, and Job and Log.

Refer to *Refer to "Connect to PrintServices on Web"(p24).*

[Print File List box]

Files to be printed or deleted are displayed in this box. File Format and Copies to be printed can be changed by utilizing the drop down menus.

[Print]

This button prints the selected file in the Print File List box.

Refer to *Refer to "Print" (p20).*

[Help]

Displays BT-PlotAssistant On-line Help. Features and functionality of the BT-PlotAssistant are explained in more detail.

Register Extension, Owner Name and Printer Name

Register an Extension type (file format) Owner name, and Printer name.

[Extension]

The extension type allows the user to enable automatic file format recognition. Registered extensions are recognized automatically and the formats are displayed in the [Format] column when the file is sent to the Print File List box.

Note *It is possible to change the format later which was identified automatically by extension type.*

[Owner name]

The Owner name is displayed in the 'OWNER NAME' column of the output log.

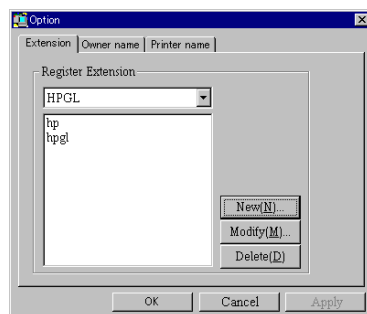
[Printer name]

A Printer name can be entered by the printer host name or IP address.

If you register a printer by host name, the host name needs to be registered in Windows Hosts file or DNS.

Procedure

- 1** Select [Option] button.
[Option] dialog box will be displayed.



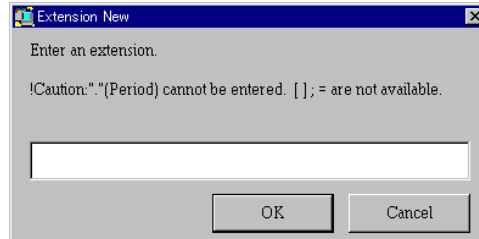
- 2** Select the [Extension], [Owner name], or [Printer name] tab.

3 Click [New] button.

Note

Current data can be changed by using the [Modify] button and deleted by using the [Delete] button.

4 Enter Extension, Owner, or Printer name (IP address) and Click [OK].

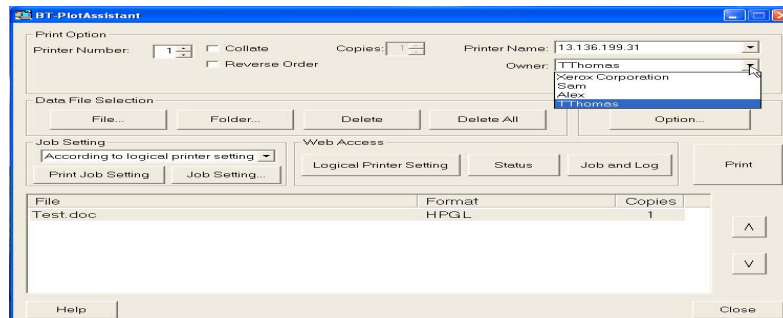


Important

- .(Period), [and] (parenthesis), ;(Semi colon), = (Equal) cannot be used as extension.
- [and] (parenthesis), ;(Semicolon), = (Equal) cannot be used as a printer name.

5 After completing all settings, Click [OK].

The new Printer name(s) and Owner name(s) are added to the [Printer name] and [Owner] drop down lists.



Create Job Setting File

Job attribution such as Media size/type and pen can be set and saved in a job setting file. When printing, you can specify a desired job setting file and print according to the settings.

Note *Job setting file is applied by each job. It is not possible to apply a job setting by file.*

[Media size/type]

Define the Media size series, Media size mapping, Media cut method.

[Pen]

Define 32 pen attribution (Effective with HPGL/HPGL2/MGL only).[Color]

Note *Color option is not supported by 6030/6050/6204 Wide Format Printers*

[Finisher]

Note *Finisher option is not supported by 6030/6050/6204 Wide Format Printers*

[Stamper]

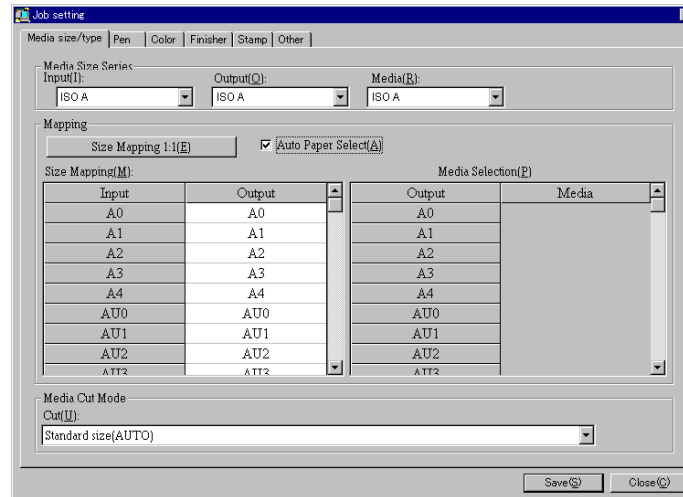
Note *Stamper option is not supported by 6030/6050/6204 Wide Format Printers*

[Other]

Define other options such as manual paper feed, output destination, message print, and media type.

Procedure

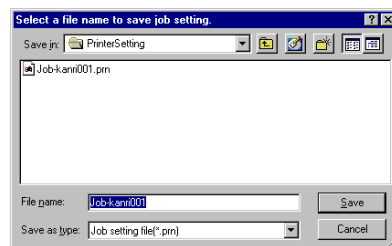
- 1 Click [Job Setting] button.
[Job setting] dialog box is displayed.



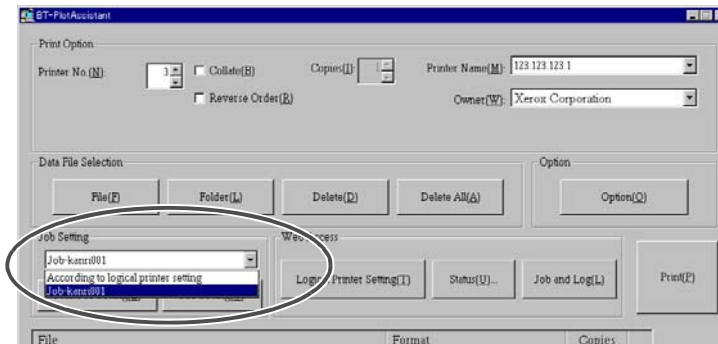
- 2 Select the [Media size/type], [Pen], and [Other] tabs and set the parameters as required.

Refer to *Refer to BT-PlotAssistant Help for detail of each item.*

- 3 Click [Save] button after completing all settings. The 'Select a file name to save job setting' dialog box appears.



- 4** Enter a Job Setting file name and Click [Save] button.
Job Setting file will be created.
The created file will be added to [Job Setting] drop down menu.



Print

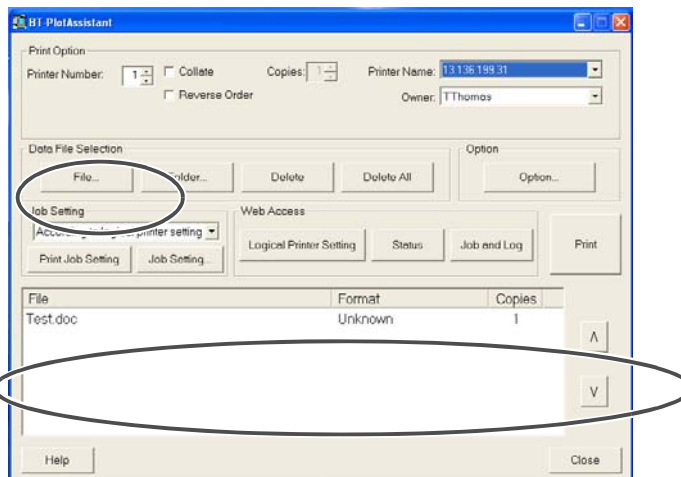
This section describes the procedures on how to define print option settings and how to print data file(s).

- Important**
- When printing data file stored in removable media (MO, CD-ROM, etc.) or network drive, the file is temporarily copied on the hard disk. Therefore, it is required to leave free disk space for the data size.
 - When creating a data file by Windows Plot Driver, Check Off [Output PjL]. In the case of Xerox 6030/6050/6204 Wide Format Windows Driver, open the property of the printer in Control Panel, and Select 'Default Setting' tab. Then Select 'Off' for 'Print job control by driver'. Otherwise job setting defined by BT-PlotAssistant may not be reflected correctly.

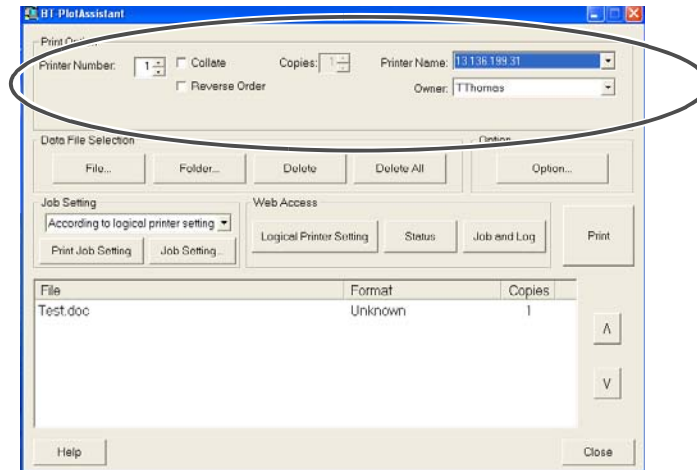
Procedure

- 1** Drag & drop the data file to print into the Print File List box, or Click [File] button and select a file. The selected file is displayed in Print File List box.

- Note**
- To select all files within a folder, Click [Folder] button. Select a folder and Click [OK]
 - To delete a file from the Print File List box, Select the file and Click [Delete] button. To delete all files in the Print File List box, Click [Delete All] button. (The actually data file is not deleted, just removed from the Print File List box.)



2 Set each item in [Print Option] section.



[Printer Number]

This option allows the user to Select logical printer number from 0 to 99.

[Collate]/[Copies]

Select the [Collate] check box to print a file using collate function. Specify the number of collated copies to be printed by using the [Copies] drop down menu.

Note *Number of collated copies can be specified by each job. If not collated, number of copies can be set by each file.*

[Reverse Order]

Select this check box to output print by reverse order.

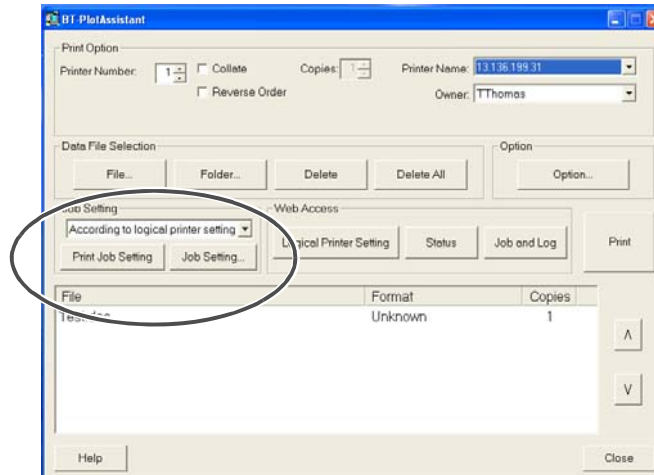
[Printer Name]/[Owner]

This option allows user to select a printer name (or IP address) and owner name.

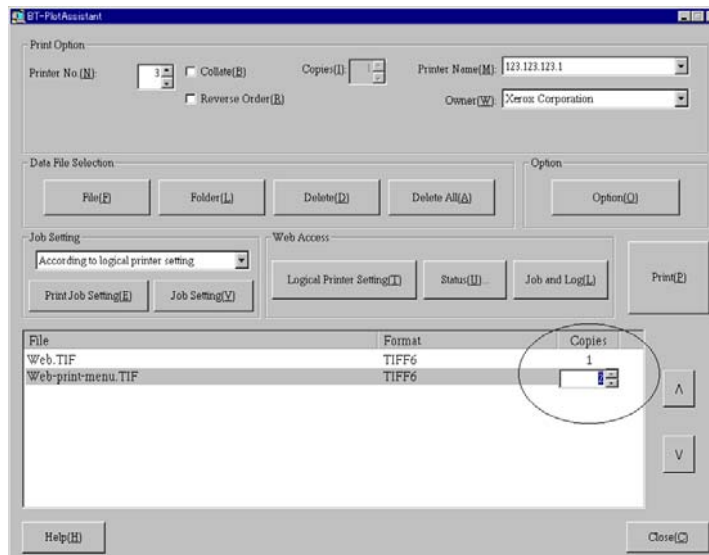
Note *If printer name or owner name is not listed, register using [Option] button. Refer to "Register Extension, Owner Name and Printer Name" (p15) for operation.*

- 3** Select a job setting file to be applied using the [Job Setting] drop down menu. If [According to logical printer setting] is selected, print setting defaults to the logical printer settings, which are set in the [Print Option] section.

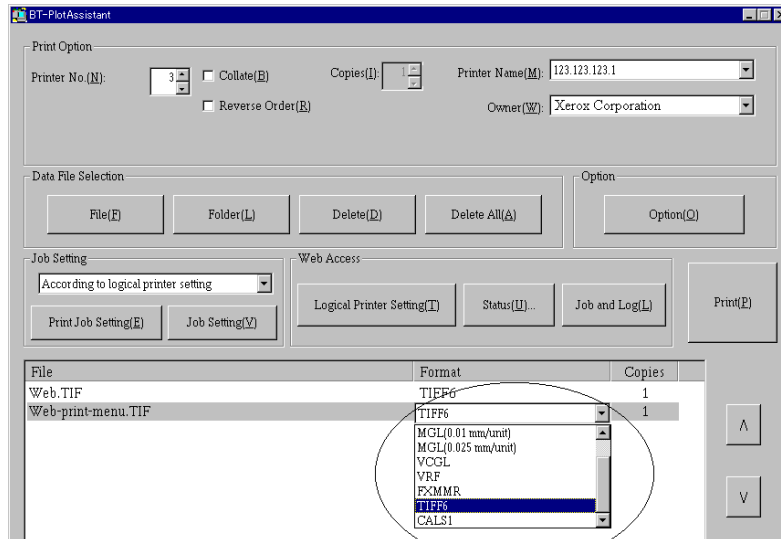
Note If the Job Setting file is not in the [Job Setting] drop down menu, create one by using [Job Setting] button. Refer to "Create Job Setting File" (p17) for detail.



- 4** To set the number of copies to be printed for a file, Double-Click [Copies] for the file to print. Enter the number of copies from 1 to 99.



- 5** If the file format is displayed as 'Unknown' or to modify the current format, Double-Click [Format] for the file to print and Select the new file format from the drop down menu.



- 6** Click [Print] button.
The selected file is printed by the specified printer.

Connect to PrintServices on Web

PrintServices on Web screen can be displayed by Selecting [Logical Printer Setting], [Status] or [Job and Log] button in the [Web Access] section. It connects to a printer and displays the printer status and job list. The parameters of the logical printer can also be changed.

Important

- The browser used for [Web Access] is the default browser specified by the customer.
- Depending on the browser setting, connection to PrintServices on Web may become via proxy server when accessing from BT-PlotAssistant. If you want to connect directly, change the browser setting.

Refer to

Refer to PrintServices on Web Help for the operation of PrintServices on the Web.

[Logical printer setting]

Displays logical printer setting screen.

[Status]

Displays Printer Status screen.

[Job and Log]

Displays Job and Log screen.

Chapter 4

Error Messages

4.1

List of Error Messages

The following table shows error messages possibly displayed during the operation of BT-PlotAssistant and their meaning, and how to resolve the errors.

Error message	Meaning	How to resolve
Select copies from 1 to 99.	Number of copies is out of range.	Correct the number of copies from 1 to 99.
Printer name is not selected. Select printer.	No printer was registered in [Printer name] when you send print command.	Register printer name or IP address from [Printer name] of [Option].
Same extension has been registered already. Unable to register.	Same extension had been registered when you tried to register an extension.	Change extension name. It is required to register unique extension for automatic data format recognition.
Same owner name has been registered already. Unable to register.	Same owner name had been registered when you tried to register a owner name.	Change owner name.
Same printer name has been registered already. Unable to register.	Same printer name had been registered when you tried to register a printer name.	Change printer name.
File XXX copies are out of range. Enter value from 1 to 99.	Number of copies for file XXX is out of range.	Correct number of copies for file XXX from 1 to 99.
File XXX format is unknown. Select format.	File XXX format is unknown.	Specify the format for file XXX.
Invalid printer number. Specify number from 0 to 99.	Printer number is out of range.	Specify printer number from 0 to 99.
Pen width setting is out of range. Enter value from XX to XX.	Pen width setting value is out of range.	Enter pen width setting value within limits.
Job setting file is corrupted. Unable to set a job.	Job setting file is corrupted.	Delete the corrupted job setting file and create new one.
Cannot find the specified file. Printing is halted.	Cannot find job setting file in specified location.	Job setting file might have been moved, or deleted. Bring back the job setting file to original place, or create new one.

Error message	Meaning	How to resolve
Error was found in job setting. Cannot print.	Error was found in job setting file.	Check the contents of job setting file to see if it is correct.
Unable to get the path of a temporary file.	Failed to get a temporary file.	Re-start BT-PlotAssistant.
Unable to get a temporary file.	Failed to get a temporary file.	Re-start BT-PlotAssistant.
Failed to create print data. Cannot print.	Failed to create a temporary file.	Re-start BT-PlotAssistant and check the free space on Disk.
BT-Plot Assistant is not installed correctly. Re-install the program.	Either of the following reasons: (1) You have copied BT-Plot Assistant to another PC without using installer. (2) Registry is corrupted.	Re-install BT-PlotAssistant.
Printer connection failed. Failed to print.	Printer is disconnected for some reason.	Check printer status and re-send print data.
Unable to connect to this printer from this application. Cannot print.	The printer you have tried to print to is not supported by BT-PlotAssistant.	Specify a supported printer.
Printer is off-line. Re-send print data after power on the printer.	Printer is out of use for some reason.	Check printer status and re-send print data.
Cannot print this print job setting.	You tried to print job setting specifying [Same as logical printer setting].	Unable to print [Same as logical printer setting]. Select other job setting file.

Index

A

- About BT-PlotAssistant..... 2
- According to logical printer setting..... 22

B

- browsers..... 4

C

- Collate..... 21
- Collated copies..... 21
- Copies..... 22

D

- Data File Selection..... 13
- Delete..... 20
- Delete All..... 20

E

- exit..... 12
- Extension..... 15

F

- Folder..... 20
- Format..... 23

H

- Hardware..... 3
- Help..... 14
- host name..... 15
- Hosts file..... 15

I

- IP address..... 15, 21

J

- Job and Log..... 24
- Job Setting..... 14, 18, 22
- job setting file..... 17

L

- logical printer number..... 21
- Logical printer setting..... 24

M

- manual paper feed..... 17
- Media size/type..... 17, 18
- media type..... 17
- message print..... 17
- Network..... 3

O

- Operating Environment..... 3
- Operating system..... 3
- Option..... 13, 15
- Other..... 18
- output destination..... 17
- Owner..... 15, 21

P

- Paper cut method..... 17
- Paper size mapping..... 17
- Paper size series..... 17
- Pen..... 17
- Print..... 14
- Print File List box..... 20
- Print Option..... 13, 21
- Print Services on Web..... 14, 24
- Printer name..... 15, 21
- Printer Number..... 21
- PrintServices on Web..... 14, 24

R

Reverse Order 21

S

start 12

Status 24

U

uninstallation 9

W

Web Access 4, 14, 24