

Xerox® FreeFlow® Accxes® Print Server and Web Printer Management Tool Setup Guide



© 2010 Xerox Corporation. All rights reserved. XEROX® and Xerox and Design®, 6204®, 6279®, 6604/05 Solution™, 6622 Solution™, Accxes® and FreeFlow®, are trademarks of Xerox Corporation in the US and/or other countries.

ENERGY STAR® and ENERGY STAR MARK® are registered United States trademarks. Microsoft Windows® is a trademark Corporation in the United States and/or other countries. Adobe®, PostScript®, PostScript®3™, and PostScript Logo® are trademarks of Adobe Systems Incorporated in the US and/or other countries. AutoCAD® is a registered trademark of Autodesk, Inc. Product status, build status, and/or specifications are subject to change without notice.

Table of Contents

1 Introduction.....	1-1
System Requirements.....	1-2
Small Networks.....	1-2
Larger Networks.....	1-2
Prerequisite Knowledge.....	1-2
Related Information Sources and CDs.....	1-3
Using This Guide.....	1-3
Prerequisite Knowledge.....	1-4
Web Printer Management Tool Overview.....	1-4
2 Getting Started with the Web Printer Management Tool.....	2-1
Prerequisites to Accessing Web Printer Management Tool.....	2-1
Check Proxy Connections.....	2-2
Internet Explorer.....	2-2
Firefox.....	2-2
Configure your Network Connections.....	2-2
TCP/IP.....	2-2
On the Web Printer Management Tool.....	2-2
On the 6204 Printer User Interface.....	2-3
On the 6279, 6604/6605, and 6622 Printer User Interface.....	2-3
Enable DHCP.....	2-3
On the Web Printer Management Tool.....	2-3
On the 6204 Printer User Interface.....	2-4
On the 6279, 6604/6605, and 6622 Printer User Interface.....	2-4
On the 7142 Operator Panel.....	2-4
Starting the Web Printer Management Tool.....	2-4
Viewing the Printer Queue Tab Set.....	2-5
Job Queue.....	2-5
Hold Queue.....	2-5
Active Queue	2-5
Reprint Queue.....	2-6
TotalAccxes Queue.....	2-6
Security.....	2-7
Changing the System Password.....	2-7

In the Web Printer Management Tool.....	2-7
Scan Destinations.....	2-7
Scan to File Transfer Protocol (FTP) Destination.....	2-7
Remote File Naming.....	2-8
Scan to TotalAccxes.....	2-9
Disk Image Overwrite.....	2-10
InstantAccxes.....	2-11
3 Configuration and Settings Test Print.....	3-1
Test Print.....	3-2
From the Web Printer Management Tool.....	3-2
From the 6279, 6604/6605, and 6622 Printer.....	3-2
Configuration Test Print Sample.....	3-2
Configuration Test Print Details.....	3-3
Controller Configuration.....	3-3
Optional Controller Features.....	3-4
Xerox Wide Format Printers and Scan Systems.....	3-4
Print Engine Configuration.....	3-5
Installed Media.....	3-5
Communication Parameters.....	3-5
Scanner Configuration.....	3-5
6279 Wide Format.....	3-5
Finisher Configuration.....	3-5
Settings Test Print Sample.....	3-6
System Settings.....	3-6
Processing Defaults.....	3-7
4 Printer Setup.....	4-1
Configuration Settings.....	4-1
Table 4.1 Configuration Settings.....	4-1
Emulation Settings.....	4-2
Table 4.2 Emulation Settings	4-2
Configuring System Defaults.....	4-2
Table 4.3 System Defaults.....	4-3
Utility Settings	4-4
Table 4.4 Utility Settings.....	4-4
5 Driver and Client Software Installation.....	5-1
Client Tools Overview.....	5-1
Overview.....	5-1

Installation.....	5-1
Account Management Tool Overview.....	5-1
Overview.....	5-1
Installation.....	5-1
Drivers.....	5-2
Installation.....	5-2

Table of Contents

Introduction

The purpose of this guide is to provide experienced System Administrators with the required information for setting up a Xerox Wide Format Printer within a variety of network environments.

FreeFlow[®] Accxes[®] Version 15.0 supports the following printers:

- 6204[®]
- 6279[®]
- 6604/6605 Solution[™]
- 6622 Solution[™]
- 7142

Although not all tasks are required for setup within every network environment, the typical communications setup tasks include:

- Installing the print drivers
- Setting up the remote printer, including changing the password and setting the printer defaults in the Web Printer Management Tool
- Printing a printer configuration test print.
- Installing the Accxes Client Tools (ACT) on user workstations, which enables users to send print jobs that can override the default printer settings.
- Installing the Account Management Tool (AMT) on one workstation, from which media usage data and scanner usage data are retrieved from the printers controller.

System Requirements

There are several important system requirements for setting up network printing, including:

- A working knowledge of your network operating environment
- A workstation with the appropriate operating system software installed
- The proper TCP/IP protocol settings configured for network connectivity
- Network cabling that is compliant with Ethernet specifications for the environment in which the printer is installed

Small Networks

For small networks consisting of several network-connected devices/workstations and a single hub, it is necessary to set up the printer with an individual IP Address and a Subnet Mask. The Subnet Mask must match all the other local area network-connected workstations in use. Unless a router (Gateway) is being used to gain access to the larger wide area network, a default Gateway address is not needed.

Larger Networks

For Larger Networks consisting of many network-connected devices/workstations, with multiple hubs and routers, it is mandatory to set up the printer with an individual IP Address and Subnet Mask. The Subnet Mask must match the subnet that the printer is on. The Gateway address is the router address that the printer uses to gain access to the larger, wide area network.

NOTE

The IP address and Subnet Mask can be setup automatically using the Dynamic Host Configuration Protocol (DHCP). This is accomplished once the network connection is configured via DHCP. Refer to Chapter 2 in this guide for details.

Prerequisite Knowledge

The Xerox FreeFlow® Accxes® Wide Format Print Server v15.0 works with the following monochrome Xerox Wide Format printers: the 6204®, 6279®, 6604/6605 Solution™, and 6622 Solutions™. This robust, sophisticated and easy to use image processing print server provides significant value to customer operations while ensuring fast, productive top quality results in every print or scan job.

FreeFlow Accxes Print Server operations are conducted through the copy and print system User Interface, Web Printer Management Tool, FreeFlow Accxes Client Tools, and printer drivers.

Two gigabytes or more of Random Access Memory (RAM) delivers high performance when Ripping even the largest files, and the FreeFlow Accxes system architecture ensures full concurrency for all operations. This means it can RIP (process) files, manage copy and print queues, accept scanner input, and run all other system operations simultaneously, without any loss of system performance. And it performs better than any other image processing print server.

Related Information Sources and CDs

We provide the following documentation to help you make optimum use of the machine.

Quick Start Guide: The Quick Start Guide introduces the main features of the machine and provides basic operating instructions. It also is provided in PDF format on the CD.

CD-ROMs: Several CDs are provided with the machine, including the following:

- **Documentation CD:** The Documentation CD contains the Copier/Printer User Guide in PDF format, and installation instructions for client and driver software. The user guides for the client and driver software are included with the respective software.
- **Driver Software CD:** The Driver Software CD contains the version 15.0 PostScript driver (functionality must be enabled using a Feature Key), version 15.0 HP-GL/2 driver, and driver installer (for PostScript and HP-GL/2).
- **Client Software CD:** The Client Software CD contains the version 15.0 Accxes Client Tools software and the Account Management Tool software.

NOTE

Drivers for AutoCAD 2007 - 2010 are on the AutoCAD CD.

Using This Guide

This guide uses the following conventions:

- Press **Key** - Within procedures, the names of keys to be pressed are bold. The name of the key should be as it appears on the keyboard. For example, Press **Esc**.
- Select **option** - Within procedures, the term select can represent various methods of launching a feature; the option to be selected is bold.
- The statement Open object denotes the same action as Select **Object** and double-click.
- Select **option > option** - Multiple options are separated by a bracket. For example, select **Start > Run > cmd**.
- <variable information> - Variable information is enclosed in brackets and lower case. Replace the text with the actual value. For example, type <name> in the text field.
- *Document title* - Document names are shown in italics. For example, the *Xerox FreeFlow Accxes Print Server and Web Printer Management Tool*.

NOTE

A note is a paragraph (separate from the body text) containing related information that merits emphasis.



WARNING

A warning indicates that an injury or loss of life may occur if an operating or maintenance procedure, practice, or condition is not strictly observed.



CAUTION

A caution indicates that damage or destruction to hardware, software, or your data could occur if an operating or maintenance procedure, practice, or condition is not strictly observed.

Prerequisite Knowledge

What does Accxes do for you? Accxes is a Raster Image Processor (RIP). Accxes receives requests from various sources, including a client, using one of our print drivers, processes the request, and then sends the information to the printer.

Web Printer Management Tool Overview

As part of the FreeFlow Accxes firmware, the Web Printer Management Tool is accessed from your workstation using any of the following web browser software:

- Internet Explorer 8.0 (minimum or greater is required)
- Mozilla Firefox 3.6 (minimum or greater is required)
- Apple Safari 5.0 (minimum or greater is required)
- Google Chrome 5.0 (minimum or greater is required)

Later versions of the above software releases are applicable as well.

The instructions provided are specifically written for the most commonly used Windows Internet Explorer browser and differ if you are using another browser software. It is assumed that System Administrators have a basic knowledge of their browser software.

The Web Printer Management Tool enables three major functions:

- Print job management and job status tracking
- Remote control over the printer default settings
- A method to enable job accounting for printed, copied, and scanned jobs. A System Administrator can track media usage data and save it to the FreeFlow Accxes controller job log file. The data is then retrievable via an external account server, such as the Account Management Tool (AMT).

2

Getting Started with the Web Printer Management Tool

This section of the Setup Guide provides detailed instructions on how to use the Web Printer Management Tool.

At installation, the Service Representative configures machine settings and outputs a Test Print page with the final configuration information. This Test Print page provides useful information regarding the printer software and features configured for your customized Wide Format environment. It can be found in the same location as the Service Log. Once you have changed the default settings to your liking, reprint the Test Page to keep current details for future references. The IP Address of the printer is often required information.

NOTE

The IP Address is needed several times in this Setup Guide. Keep the Test Print page handy as you proceed.

Prerequisites to Accessing Web Printer Management Tool

- Check and change your browser setting, so that it does not try to access the FreeFlow Accxes controller through a proxy server.
- Configure your Network Connections.

Verify these settings and configurations are correct prior to accessing the Web Printer Management Tool.

Check Proxy Connections

Internet Explorer

To deselect a Proxy connection in Internet Explorer, perform the following steps:

1. In the Web browser, select **Tools > Internet Options**.
2. Click the **Connections** tab.
3. Click **LAN Settings**.
4. In the Proxy server section, deselect the **Use a proxy server for your LAN** check box.
5. Click **OK**.

Firefox

To deselect a Proxy connection in Firefox, perform the following steps:

1. In the Web browser, select **Tools > Options**.
2. Select **Advanced**.
3. Select the **Network** tab.
4. Select **Settings**.
5. Select **No Proxy**.
6. Click **OK** twice to finish.

Configure your Network Connections

TCP/IP

Prior to communicating with your FreeFlow Accxes scanner and printer, the FreeFlow Accxes controller needs to be configured to the network.

The TCP/IP communication parameters include:

- NetMask
- Ethernet TCP/IP Address
- Ethernet TCP/IP Gateway

Check your Configuration Test Print to see that the TCP/IP settings are correct for your system.

On the Web Printer Management Tool

1. Select **Configuration > Network**.

2. Check the **TCP/IP** settings.

FreeFlow Accxes

Active User Setup: 0
Session Owner: 13.141.62.213

Printer Queue Configuration Emulation System Defaults Utilities Applications Session Setup Help

Details Miscellaneous Features Network SNMP Printer Accounting Security Scan To FTP TotalAccxes

IPv4

☐ DHCP enable Host Name:

Current Connection: **1000 Mbps - Full Duplex**

Speed/Duplex: Auto

NetMask: 255 . 255 . 252 . 0

Ethernet TCP/IP Address: 13 . 141 . 62 . 111

Ethernet TCP/IP Gateway: 13 . 141 . 62 . 1

Update Printer

IPv6

Scope/Link: FE80:0:0:223:AEFF:FE75:BCEC

Please Note: Incorrect specification of the TCP/IP parameters can result in the Web Printer Management Tool losing all communication with the printer. In any event, you will need to update the browser URL after the changes are submitted.

xerox

©2010 XEROX CORPORATION. All rights reserved.
Xerox®, FreeFlow® and the sphere of connectivity design are registered trademarks of Xerox Corporation in the United States and / or other countries.

NOTE

The Speed/Duplex setting of Auto provides the fastest speed. Keep this setting unless you have a specific need that requires a modification.

NOTE

If both IPv4 and IPv6 protocols are available on the user network, traffic can be sent either way. To activate IPv6, the user needs an IPv6 capable router with the Router Advertisement Protocol running. Accxes supports auto configuration of IPv6 addresses by way of the IPv6 capable router. Therefore, the user does not have to do anything with the controller if there is an IPv6 capable router on the network. If DNS is enabled, IPv6 addresses can be addressed by name. See the online Help for detailed information on these topics.

On the 6204 Printer User Interface

1. Select **Menu > Setup > Network Settings > TCP/IP**.
2. Enter the IP Address, Subnet Mask, and Gateway, and select **Save**.

On the 6279, 6604/6605, and 6622 Printer User Interface

From the Services menu, select **Machine Info > Administration > Network Setup**.

Enable DHCP

On the Web Printer Management Tool

1. Select **Configuration > Network**.

2. Mark the **DHCP enable** check box.

NOTE

Enter a Host Name if you use DHCP with Dynamic DNS. See the Web Printer Management Tool Help for more information.

On the 6204 Printer User Interface

Select **Menu > Setup > Network Settings > DHCP**.

On the 6279, 6604/6605, and 6622 Printer User Interface

From the Services menu, select **Machine Info > Administration > Network Setup**.

On the 7142 Operator Panel

Press the **Menu** key followed by the **Back** or **Next** keys to the Network setup option.

Starting the Web Printer Management Tool

Perform the following steps at your workstation:

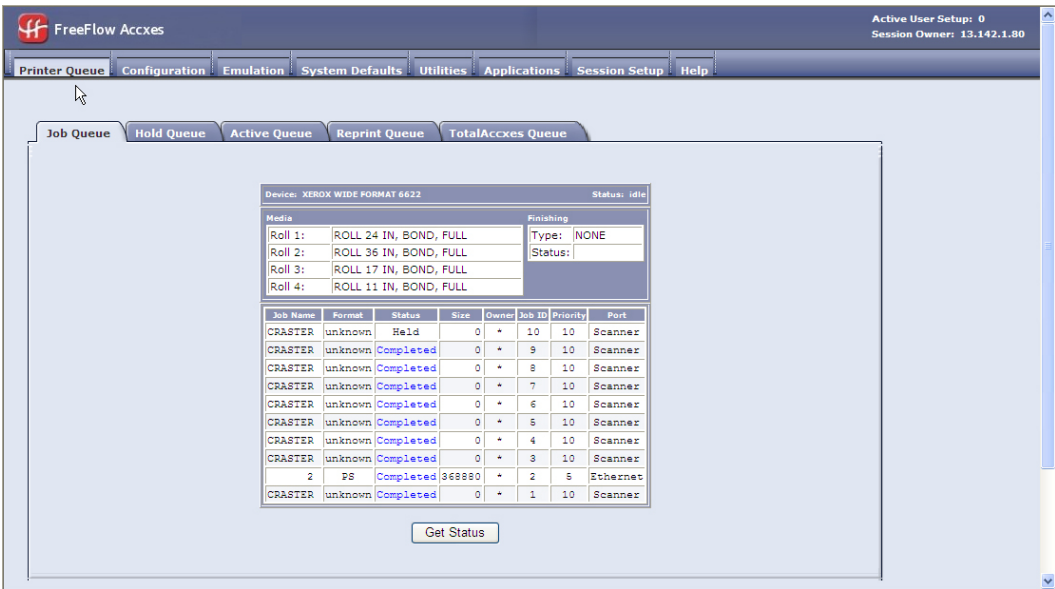
1. Launch your Web browser. If your browser starts up in Mail or News mode, go to the browser mode.
2. In the browser URL box, enter the http:// followed by your printer IP address, such as http://13.152.45.46.

NOTE

If DHCP and Dynamic DNS are enabled, users can enter the name instead of the IP Address.

3. Press the **Enter** key. The application opens.

Viewing the Printer Queue Tab Set



Job Queue

This is the main display, which shows active and inactive jobs. There can be up to 256 jobs in the printer spool queue.

Hold Queue

When Administration Managed Queue is enabled, all print jobs submitted are placed in the Hold Queue, therefore do not print automatically. If the System Administrator has set password protection, users will not see the Cancel, Release, Hold or Reprint job options.

If a print job is in progress when getting placed on hold, it is stopped.

Held jobs can then be scheduled for printing at a later time.

Jobs can also be placed on hold should there be a media mismatch condition, allowing the printer to continue printing the next job in queue. To enable the Hold feature, go to **System Defaults > Media** and select the **Mismatch Queue** check box.

NOTE

If Immediate Image Overwrite is enabled, jobs are not placed on Hold. If Job Reprint is enabled, jobs are not placed on Hold.

Active Queue

This tab shows only the jobs in progress, allowing you to cancel or change priority on any or all jobs simultaneously.

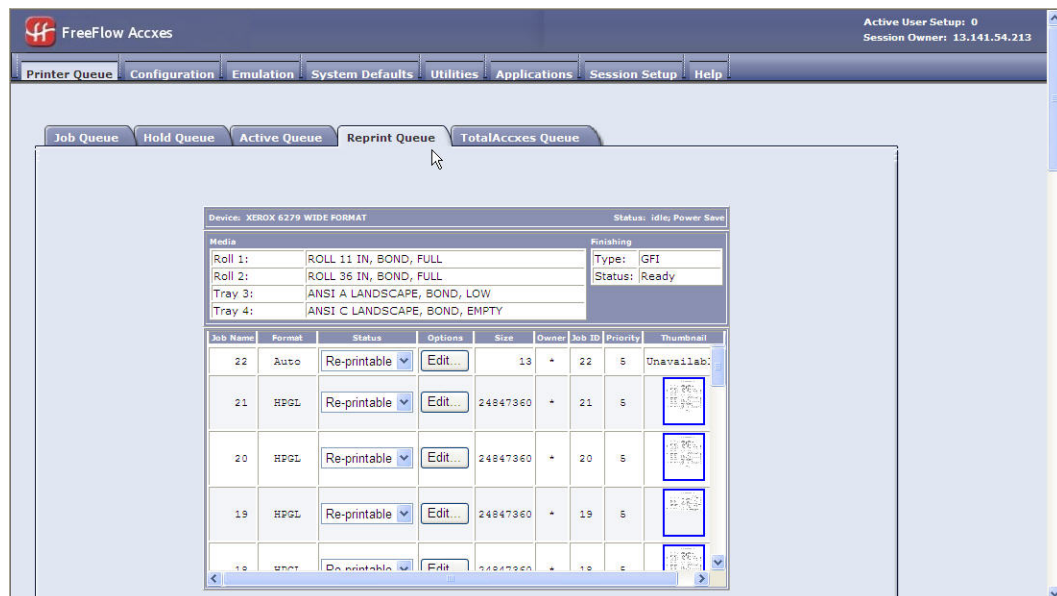
Reprint Queue

This tab shows the jobs available for reprint. Completed copy and print jobs are available for reprint if the Administrator has enabled the job reprint feature. Job parameters may be edited before reprinting by clicking **Edit**.

Reprinting can be enabled on the **Configuration > Miscellaneous** page. Thumbnail creation can also be enabled, allowing users to view a small preview of the first page of a scanned image.

NOTE

If Immediate Image Overwrite is enabled on the **Configuration > Security** page, jobs are not reprintable.



NOTE

See the online Help for additional reprint information.

TotalAccxes Queue

The TotalAccxes Queue option allows users to monitor the activity of remote printers enabled by the TotalAccxes feature. By defining a scan destination as a TotalAccxes printer, scanned images can be sent directly to that printer or can be held in the TotalAccxes queue for preview. Once previewed, the scanned images copy count can be modified and then released for printing to the TotalAccxes printer or the image can be deleted. In addition, active or completed TotalAccxes jobs are listed. The **Clear All** button (located on the TotalAccxes tab) provides a method to cancel and clear the entire TotalAccxes queue with one operation.

Users may then select a remote printer destination at the printer using the Scan to Remote Printer feature on their User Interface.

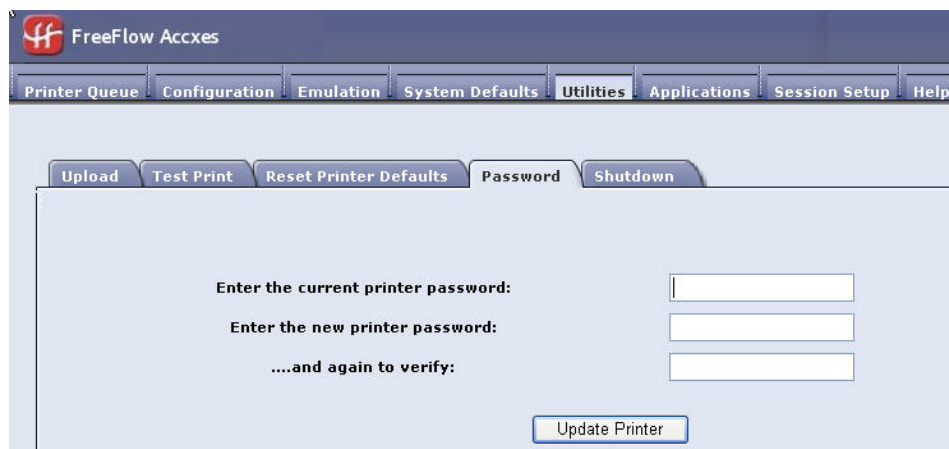
Security

By default, any user can view and change the Web Printer Management Tool pages. To prevent unwanted access to the system settings, the default password needs to be changed. Follow the steps below to change the default password from the universal access number 0.

Changing the System Password

In the Web Printer Management Tool

1. Click **Utilities > Password**.



The screenshot shows the FreeFlow Accxes web interface. At the top is a navigation bar with tabs: Printer Queue, Configuration, Emulation, System Defaults, Utilities, Applications, Session Setup, and Help. The 'Utilities' tab is selected, and within it, the 'Password' sub-tab is active. Below the tabs, there are five buttons: Upload, Test Print, Reset Printer Defaults, Password, and Shutdown. The main content area contains three text input fields with labels: 'Enter the current printer password:', 'Enter the new printer password:', and '....and again to verify:'. An 'Update Printer' button is located at the bottom right of the form.

2. Enter the current printer password in the designated field (a number from 0 to 99999).
3. Enter the new printer password and then enter it again to verify.
4. Click **Update Printer**.

NOTE

If the entered password matches the correct system password, you have write-access to the printer settings. The FreeFlow controller sends back a Password verification passed or Password verification failed message. This access only remains open for several minutes and then times out.

NOTE

To log in or to access the tool after a session times out, select the **Session Setup** tab and enter the current password.

Scan Destinations

Scan to File Transfer Protocol (FTP) Destination

Users who choose Scan to FTP are allowed to configure up to 16 File Transfer Protocols (FTP) destinations for scanned images in the Web Printer Management Tool.

Once a scan destination has been configured on the Web Printer Management Tool, users can choose a destination using the User Interface on a machine with an on-board scanner, such as the 6204, 6279, 6604/6605, or 6622.

The scanned image is sent to the selected FTP destination and the file no longer remains on the controller hard disk.

To scan to a FTP destination:

1. Select **Configuration > Scan to FTP**.



2. Select the Help file for more information about configuring Scan to FTP destinations.

NOTE

If the Scan to Net key is not installed, the Scanner option is not available and you are unable to perform this function.

Remote File Naming

Remote File Prefix and **Remote File Indexing** in Web Printer Management Tool are only applicable for printers without a 15" Touch Screen (UI) or an on-board scanner. The Synergix Scanner is a detached scanner for example.

These features are described below:

- **Remote File Prefix** – Remote file names will start with an alphanumeric string.
- **Remote File Index** – Remote file names will end with the numeric value. This number will automatically increase after every scan.



There is also a non-selectable file extension based on the file format chosen (.jpg, .pdf, .cal, .tif, or .jpeg).

Example - If the file format is TIFF and the Remote File Prefix and Index are:

- Remote File Prefix – DESTINATION1_
- Remote File Index – 0

NOTE

The resulting file name will be: DESTINATION1_0000000000.tif.

The next scanned file would be named: DESTINATION1_0000000001.tif.

Scan to TotalAccxes

The Scan to TotalAccxes feature allows a user to scan an image from an on-board scanner, print on select remote color printers and control the scanned job images through the work process.

Users who choose TotalAccxes are allowed to configure up to 16 remote printer destinations for scanned images in the Web Printer Management Tool.

Once a remote printer destination has been configured on the Web Printer Management Tool, users can choose the remote printer using the User Interface on a machine with an on-board scanner, such as the 6279, 6204, 6604/6605, or 6622.

The scanned image is sent to the selected remote printer and the file remains on the controller hard disk.

NOTE

This feature requires a Scanner and a Scan to Net key.

To set up Scan to TotalAccxes:

1. Select **Configuration** > **TotalAccxes**.

The screenshot shows the FreeFlow Accxes Web Printer Management Tool interface. The top navigation bar includes tabs for Printer Queue, Configuration, Emulation, System Defaults, Utilities, Applications, Session Setup, and Help. The Configuration tab is active, and the sub-tab TotalAccxes is selected. A red warning message states: "Caution! Changing a remote printer's Print Driver will result in the deletion of any existing Color Profile Sets." Below this, the Scan Destination is set to 1. The Configuration section contains fields for Print Driver (Xerox FreeFlow Accxes), Printer Name (Accxes1), Printer Nickname (PRINTER1_), Printer Location (Lab), IP Address (0.0.0.0), Auto preview (On/Off radio buttons), Connection (LPD), and Remote Queue Name. The Default Document Print Options section includes Job Name (Remote Print), Media (None), and Copies (1). Buttons for Update Printer and Test Print are at the bottom.

2. Select the Help file for more information about configuring TotalAccxes destinations.

NOTE

After a scan, a Scan to TotalAccxes preview image can be viewed on the Web Printer Management Tool, prior to releasing it to a (TotalAccxes) remote printer.

Disk Image Overwrite

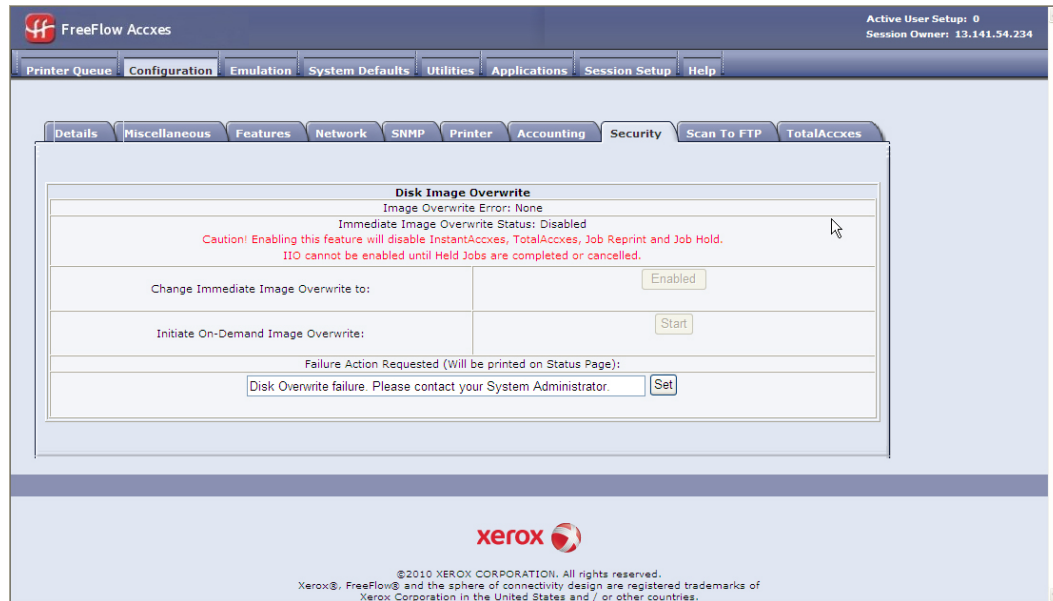
This security feature provides for 3-pass overwrites and 1-pass verification of all image data temporarily stored on the Accxes hard drive.

The feature has two modes:

- Immediate Image Overwrite (IIO): Provides for immediate deletion and verification of image data no longer needed by FreeFlow Accxes. It has minimal impact on print and copy times because only areas of the disk that have been written are deleted and verified.
- On-Demand Image Overwrite (ODIO): Restarts the system and completely eliminates from the hard drive files that are already scanned in and files that are scanned in the future.

In the Web Printer Management Tool

1. Select **Configuration > Security**.



2. Change Immediate Image Overwrite if desired. Selecting **Enabled** prevents Instant Access, TotalAccxes and Job Reprint capability.



CAUTION

Immediate Image Overwrite deletes the data from the hard drive as soon as the job is complete.

NOTE

Select the Help file for more information.

3. Select **Start** to Initiate On-Demand Image Overwrite if desired.



CAUTION

On-Demand Image Overwrite deletes everything on the hard drive when started.

NOTE

ODIO can take more than one hour to complete.

InstantAccxes

InstantAccxes provides publicly shared Instant Folders (networked folders) that can be set up with specific print options to automate document printing. Once InstantAccxes is configured and enabled, Instant Folders show up within your Microsoft Windows® Network Neighborhood. InstantAccxes is officially supported on Microsoft Windows and Apple Mac OS X.

One can configure up to 10 separate Instant Folders with unique print options, which are applied automatically to all documents found within an Instant Folder. Drag and drop individual documents to an Instant Folder and InstantAccxes locates the document, applies the print options assigned to the Instant Folder, and places the file or set of files into the FreeFlow Accxes printer queue. Documents are identified by the Instant Folder name for easy identification within the FreeFlow Accxes printer queue. Once the file is successfully added into the FreeFlow Accxes queue, the document is removed from the Instant Folder.

NOTE

InstantAccxes cannot be enabled if Immediate Image Overwrite has been enabled.

To enable InstantAccxes:

1. Select the **Applications** tab.

2. Select the **Enable InstantAccxes** checkbox.
3. Enter the **NetBIOS** name that should appear on your Windows network in the **Server Name** field.
4. Select **Configuration > Network** and select the **DHCP enable** checkbox, then enter the same **NetBIOS** name in the **Host Name** field.

This setup improves the connection and access between the controller and the Windows network.

NOTE

See the Help system for descriptions of the other fields required for setup.

3

Configuration and Settings Test Print

The first task with all network environment setups is printing the Configuration Test Print and the Settings Test Print. You can print them using the Web Printer Management Tool or the Printer User Interface.

The purpose of doing this is to provide a record of current system settings for the use of daily operations, network communications setup and restoration of desired parameters in cases of unexpected change (such as the accidental use of the Restore Factory Default Utility).

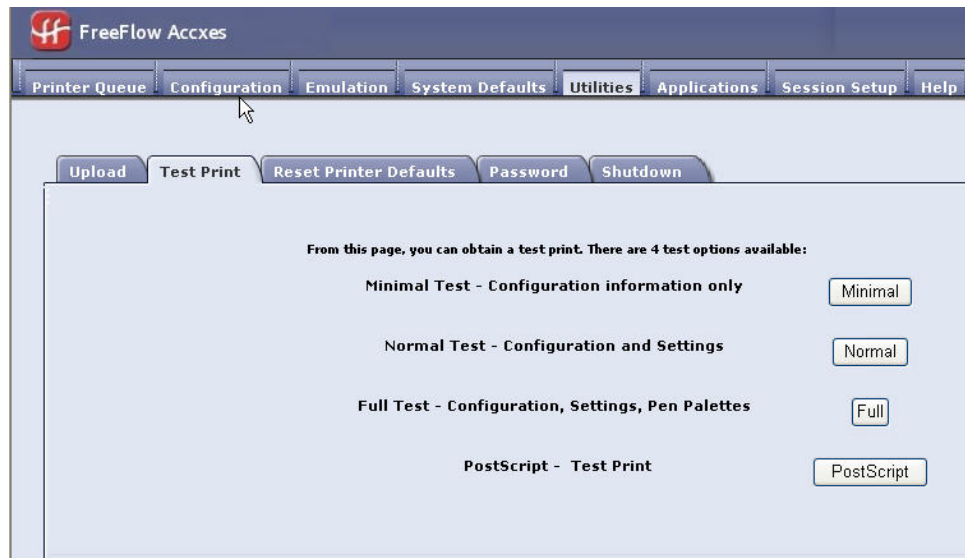
NOTE

Test print sets should be saved when the initial installation is complete and default settings are defined, and any time the default settings are changed. These should be stored with the machine Service Log.

Test Print

From the Web Printer Management Tool

1. Select **Utilities** > **Test Print**.



2. Select from the options on the screen.

From the 6279, 6604/6605, and 6622 Printer

1. Select **Machine Information** > **Print Reports** from the User Interface Services screen.
2. Select from the options on the screen.

NOTE

The PostScript test print is only available if the PostScript feature key is installed on your printer.

Configuration Test Print Sample

The main features of the Configuration Test Print are shown in the sample below and described on the following pages.

NOTE

XEROX WIDE FORMAT 6605 - CONFIGURATION			
CONTROLLER CONFIGURATION			
DATE/TIME:	07/29/2009 14:06:46	ADVANCED NETWORK STATUS:	READY
RAM (MB):	2048	ADVANCED NETWORK HW ADDRESS:	00:14:22:37:72:bb
CPU:	Intel(R) Celeron(R) 2.66GHz	KEY INSTALL KEY (KIK):	00b-19-371-ed8-d3-e4b
BSP VERSION:	2.6.22.9-61.fc6	MACHINE NAME:	00-14-22-37-72-BB
FIRMWARE:	tek3	ERROR LOG:	112-48994008_00000000
BUILD NUMBER:	07.28.11.31		
DDS ENABLE:	ON		
HARD DISK DRIVE (MB):	76293		
STORE DEBUG ON DISK:	ON		
POSTSCRIPT PARTITION:	OPTIMIZED		
IMMEDIATE IMAGE OVERWRITE:	DISABLED		
OPTIONAL CONTROLLER FEATURES			
OS ENABLEMENT:	PRESENT	JOB ACCOUNTING LICENSE:	PRESENT
PRINT ACTIVATION:	PRESENT	JOB ACCOUNTING ENABLE:	OFF
PRINT ENABLE:	ON	COPY ACTIVATION:	PRESENT
CGM LICENSE:	STANDARD	COPY ENABLE:	ON
POSTSCRIPT LICENSE:	NOT PRESENT	SCAN TO NET LICENSE:	PRESENT
POSTSCRIPT ENABLE:	ON	SCAN TO NET ENABLE:	ON
VERSATEC RASTER LICENSE:	STANDARD	SCAN TO PRINT LICENSE:	PRESENT
VCGL LICENSE:	STANDARD	SCAN TO PRINT ENABLE:	ON
AUTOCAD LICENSE:	PRESENT		
OTHER CAD LICENSE:	PRESENT		
RASTER LICENSE:	PRESENT		
DISK OVERWRITE LICENSE:	PRESENT		
PRINT ENGINE CONFIGURATION			
FIRMWARE:	01.01.04	READY TO POWER SAVER (MIN):	15
50 LICENSE:	PRESENT	POWER SAVER TO REST (MIN):	15
FINISHER:	NONE	MEDIA USAGE:	
MACHINE ID (SERIAL NUMBER):	028503	LINEAR:	117433
RESOLUTION (DPI):	600	AREA:	263918
		ERROR LOG:	112-48994008_011-9401
INSTALLED MEDIA			
ROLL 1 SIZE:	ROLL 36 IN		
ROLL 1 TYPE:	BOND		
ROLL 1 STATUS:	FULL		
ROLL 2 SIZE:	ROLL 22 IN		
ROLL 2 TYPE:	BOND		
ROLL 2 STATUS:	FULL		
COMMUNICATION PARAMETERS			
TCP/IP IP ADDRESS:	13.141.54.221		
TCP/IP SUBNET MASK:	255.255.255.0		
TCP/IP DEFAULT GATEWAY:	13.141.54.1		
RARP/BOOTP ENABLE:	OFF		
DHCP ENABLE:	ON		
SCANNER CONFIGURATION			
TYPE:	ON-BOARD SCANNER	VENDOR:	Xerox
PRODUCT:	Large Format Color	SCANNER USAGE (SQ FT):	180
FIRMWARE:	01.51	SCANNER USAGE (IN):	14336194

This report is a sample of the printout.

Configuration Test Print Details

The key information in the sections of the configuration test print are listed below.

Controller Configuration

Digital Document System (DDS) Enable: When DDS is enabled, the Accxes controller configures itself for use with a scanner. The LVX/UXC controller has DDS automatically enabled.

Immediate Image Overwrite (IIO): Provides for immediate deletion and verification of image data no longer needed by FreeFlow Accxes. It has minimal impact on print and copy times because only areas of the disk that have been written are deleted and verified.

NOTE

Enabling IIO does not provide security for previously processed images. For full deletion and verification, On-Demand Image Overwrite is recommended in conjunction with enabling IIO.

Advanced Network Status: The Advanced Network hardware address is the embedded NIC card.

Status of the 10/100/1000 Ethernet Card/Port:

- Ready shows that this is the printers currently active TCP/IP network interface.
- Disabled shows that the port is not enabled. Disabled indicates a problem and requires a service call.

Advanced Network HW Address: Used to redeem keys

Key Install Key (KIK): This is important when adding features. When downloading multiple feature keys, download all the keys before rebooting the Accxes System. This allows you to download all the keys that use the same KIK number. If you reboot, a new KIK number is created and you have to obtain the new KIK number.

RAM: The amount of Random Access Memory.

BSP Version: The version of Linux Kernel

Firmware: The version of Accxes, 15.0

Optional Controller Features

This section lists the standard features and those that require a feature key license to activate. The following is a list of the optional feature keys.

Xerox Wide Format Printers and Scan Systems

Job Accounting Feature Key: Job accounting tracks media usage data. The Account Management Tool (AMT), or some other external accounting tool, is used to assign a User ID, Account ID and Print ID. It then collects and tallies the stored data from the printers.

PostScript Feature Key: Enables the interpretation of Adobe Post Script 3, PDF up to 1.7

Disk Image Overwrite Feature Key: Enables the security options for overwriting image data on the hard drive

OS Enablement Feature Key: Enables the LVX/UXC controller to print, copy and scan.

Scan to Net Feature Key: Enables the creation of an electronic file from a scanned image.

Scan to Print Feature Key: Enables scanning to create a preview, and send the scanned image to the printer when the Scan-to-Net feature is present.

AutoCAD: Supports the DWF file format generated by Autodesk applications

OtherCAD: Supports the DGN file format

Raster: Supports the PNG, GIF, JPEG 2000 and BMP file formats

Generic Folder Interface Key (GFI): Supports finishing as an option, if the feature key is present, enabled and a finishing accessory is attached.

Print Engine Configuration

This section shows the IOT hardware address; the paper roll drawers that are present; the language; the attached finisher if present; resolution (DPI); power saver minutes and media usage.

6279 9-D: 7-D is the default print engine configuration.

6204 5-D: Use to enable 5-D size prints per minute (ppm) printing speed. Requires an Advanced Network Hardware Address and a Machine ID. 4-D is the default.

6604: Prints 4-D size prints per minute.

6605: Prints 5-D size prints per minute.

7142: High Speed 360 dpi, 426 sq/ft/hr.

Installed Media

This section lists the size and type of media installed in the printer.

Communication Parameters

This section lists the TCP/IP Address, Subnet Mask and Default Gateway.

Scanner Configuration

This section lists the scanner type, firmware level and color and speed key enablement status.

6279 Wide Format

Color Enablement Key: Enables color scanning

6279 Scanner Speed Key: Enables 6 inches per second (ips) for monochrome and 2 inches per second (ips) for color. Without this added feature, the default is 4 ips for monochrome and 1 ips for color.

Finisher Configuration

This section lists finisher information if a finisher is present.

Settings Test Print Sample

The Settings test print (a sample is shown below) lists system settings and processing defaults. See the tables of navigational paths for these settings and defaults in the next chapter.

See the Web Printer Management Tool Help file for further information.

XEROX WIDE FORMAT 6605 - SETTINGS			
SYSTEM SETTINGS			
ACTIVE PARAMETER SET:	0	HPGL PARAMETERS	
ERROR PAGE ENABLE:	OFF	HPGL MODE:	HPGL2
MISMATCH QUEUING ENABLED:	OFF	PALETTE NAME:	0
LANGUAGE:	US ENGLISH	PALETTE SOURCE:	JOB
DATE FORMAT:	IMPERIAL (MM/DD/YYYY)	MERGE CONTROL DEFAULT:	OFF
PORT TIMEOUT (SEC):	5	REINITIALIZE AFTER EOF:	OFF
TONER DENSITY:	3	HP RTL RESOLUTION:	300
MAXIMUM PLOT LENGTH (CM):	2219.399	AF TERM:	ON
BANNER PAGE ENABLE:	OFF	AH TERM:	ON
BANNER PAGE POSITION:	BEFORE JOB	FR TERM:	ON
DIAGNOSTIC PAGE:	OFF	NR TERM:	OFF
SINGLE PAGE JOB:	DISABLED	PG TERM:	ON
PLOT NESTING PARAMETERS		RP TERM:	ON
MODE ENABLE:	OFF	SP TERM:	OFF
EXCLUSIVE ENABLE:	OFF	PLOT OFF TERM:	ON
TIMEOUT:	5	IGNORE PS:	OFF
MARGIN (MM):	0	FORCE ROUND LINE ENDS:	OFF
MAXIMUM LENGTH (CM):	60.96	FORCE PP=0:	ON
CALCOMP PARAMETERS		CGM PARAMETERS	
PALETTE NAME:	0	PALETTE NAME:	0
PALETTE SOURCE:	JOB	PALETTE SOURCE:	JOB
FORCE PLOT:	ON	PAPER SIZE:	ANSI A
MANUAL COMMAND:	OFF	CGM BACKGROUND:	FILE CONTROL
NEW PLOT COMMAND:	OFF	VERSATEC PARAMETERS	
START PLOT COMMAND:	ON	CHARACTER SET:	ASCII
TOP FORM COMMAND:	ON	DEVICE EMULATION:	8830
EOP SEARCH ADDRESS:	BOTH	DEVICE BYTES PER LINE:	128
EOP COMMAND:	2	DEVICE CHARS PER LINE:	128
PAUSE COMMAND:	ON	DEVICE RESOLUTION:	100
CHECKSUM ENABLE:	ON	VDS PARAMETERS	
EOM CHARACTER:	13	PALETTE NAME:	0
# SYNCH CHARACTERS:	2	PALETTE SOURCE:	JOB
SYNCH CHARACTER:	22	CHAR ENCODING:	ASCII
RESOLUTION:	2032	TIFF PARAMETERS	
POSTSCRIPT PARAMETERS		TIFF PHOTOMETRY TAG:	FILE CONTROL
PAPER SIZE:	ANSI A	VCGL PARAMETERS	
EPS:	OFF	PALETTE NAME:	0
USE CIE COLOR:	OFF	PALETTE SOURCE:	JOB
PDF OPTIMIZE:	ON	VCGL COLOR MODE:	FILE CONTROL
IGNORE PS COLLATION:	OFF	VCGL RESOLUTION:	400
PDF TO PS LEVEL:	3		
PDF FLATTENING:	5		
PROCESSING DEFAULTS			
LABEL PARAMETERS:			
LABEL STRING:	OCRB	COLLATION ENABLE:	OFF
LABEL FONT:	TRAILING	OVER SIZE MARGIN (%):	1
LABEL X LOCATION:	BOTTOM	UNDER SIZE MARGIN (%):	2
LABEL Y LOCATION:	90	PAPER SIZE DETECT:	PLOT SPECIFIED
LABEL ROTATION:	100	MEDIA SOURCE:	ANY
LABEL SHADING:	18	MEDIA TYPE:	BOND
LABEL SIZE:	4.97	MIRRORING:	OFF
BOTTOM MARGIN (MM):	4.97	MEDIA SIZE:	BEST FIT
LEFT MARGIN (MM):	4.97	ROTATION (DEG):	AUTO
RIGHT MARGIN (MM):	4.97	SCALING (%):	100
TOP MARGIN (MM):	4.97	LINE SCALE MODE:	OFF
JUSTIFICATION X (MM):	LEFT	RASTER STAMP PARAMS:	
JUSTIFICATION Y (MM):	BOTTOM	ID:	
DATA FORMAT:	AUTO	X LOCATION (MM):	CENTER
DEFAULT JOB PRIORITY:	5	Y LOCATION (MM):	CENTER
FINISHER OPTIONS:	NO FOLD	ROTATION:	0
COPIES:	1	SCALING MODE:	RELATIVE
		SCALING (%):	100

NOTE

This report is a sample of the printout.

System Settings

This section lists the settings for your machine, such as language, toner density, error and banner page information, CalComp, PostScript, HPGL, CGM, Versatec, VDS, TIFF and VCGL parameters.

Processing Defaults

This section lists label parameters, margin information, folder information, collation, media information, mirroring, rotation, scaling and stamps information.

4

Printer Setup

Configuration Settings

In the Web Printer Management Tool, select the following navigational paths to get to the option. Then select Help for more information.

Table 4.1 Configuration Settings

Options	Navigational Path in the Web Printer Management Tool
System Configuration Details	Configuration > Details
Active User Setup	Configuration > Miscellaneous
Date/Time	Configuration > Miscellaneous
Thumbnail Creation	Configuration > Miscellaneous
Job Reprint Enable	Configuration > Miscellaneous
Job Reprint Policy	Configuration > Miscellaneous
Administrator Managed Queues	Configuration > Miscellaneous
Display Units (metric or English)	Configuration > Miscellaneous
Time-out (for Page Refresh)	Configuration > Miscellaneous
Accxes, Printer and Scanner Features	Configuration > Features
Network	Configuration > Network
SNMP	Configuration > SNMP
DDS	Configuration > Printer
Toner Density	Configuration > Printer
Language	Configuration > Printer
Media Usage	Configuration > Printer
Fonts	Configuration > Printer
Accounting Mode	Configuration > Accounting

Options	Navigational Path in the Web Printer Management Tool
Disk Image Overwrite	Configuration > Security
Scan to Net (FTP Destination)	Configuration > Scan to Net
TotalAccxes	Configuration > TotalAccxes

Emulation Settings

In the Web Printer Management Tool, select the following navigational paths to get to the option. Then select Help for more information.

Table 4.2 Emulation Settings

Options	Navigational Path in the Web Printer Management Tool
HPGL	Emulation > HPGL
CalComp	Emulation > Calcomp 906/907
VDS	Emulation > VDS
CGM	Emulation > CGM
VCGL	Emulation > VCGL
TIFF	Emulation > TIFF
Postscript (if present)	Emulation > Postscript
Fonts (True Type)	Emulation > Fonts
Pen Patterns	Emulation > Pen Patterns
Pen Palettes	Emulation > Pen Palettes
ICC Profiles (7142 only)	Emulation > ICC Profiles

Configuring System Defaults

In the Web Printer Management Tool, select the following navigational paths to get to the option. Select Help for more information.

Table 4.3 System Defaults

Options	Navigational Path in the Web Printer Management Tool
Banner Page	System Defaults > Miscellaneous
Diagnostic Page	System Defaults > Miscellaneous
Error Page	System Defaults > Miscellaneous
Finishing	System Defaults > Miscellaneous
Justification	System Defaults > Margins
Margins	System Defaults > Margins
Collation	System Defaults > Media
Copies	System Defaults > Media
Maximum Plot Length	System Defaults > Media
Media Size	System Defaults > Media
Media Size Detect Set	System Defaults > Media
Media Source	System Defaults > Media
Media Type	System Defaults > Media
Mismatch Queue Settings	System Defaults > Media
Media Specific Settings (Mismatch Mode)	System Defaults > Media
Oversize Margin	System Defaults > Media
Undersize Margin	System Defaults > Media
Maximum Plot Length	System Defaults > Media
Line Scale Mode	System Defaults > Transform
Mirror Image	System Defaults > Transform
Single Bit Scale Mode	System Defaults > Transform
Rotation	System Defaults > Transform
Scaling	System Defaults > Transform
Contrast	System Defaults > Rendering
Document Type	System Defaults > Rendering
Lightness	System Defaults > Rendering
Print Quality Mode	System Defaults > Rendering
Render Mode	System Defaults > Rendering
Vector Halftone	System Defaults > Rendering
Raster Halftone	System Defaults > Rendering

Options	Navigational Path in the Web Printer Management Tool
Fineline Grayscale Rendering	System Defaults > Rendering
Fineline Pixel Threshold	System Defaults > Rendering
Vector Minimum Line Width	System Defaults > Rendering
Plot Nesting	System Defaults > Composition
Single Page Job	System Defaults > Composition
Stamps	System Defaults > Stamps
Labels	System Defaults > Plot Labels

Utility Settings

Select the following navigational paths to get to the option. Select Help for more information.

Table 4.4 Utility Settings

Options	Navigational Path in the Web Printer Management Tool
File Upload	Utilities > Upload
Test Prints	Utilities > Test Print
Factory Default Settings	Utilities > Reset Printer Defaults
Password	Utilities > Password
Restart Controller	Utilities > Shutdown
Shut down Controller	Utilities > Shutdown
Help files (Viewing)	Help
Remote Printer (7142 only)	Utilities > Remote Printer

5

Driver and Client Software Installation

Client Tools Overview

Overview

The FreeFlow Accxes Client Tools (ACT) application runs on a Windows, Linux, Mac OS X or Solaris workstation. The tools enable a user to send print jobs, retrieve scanned files over the network and save images. Selections made in Accxes Client Tools temporarily override the default settings of the FreeFlow Accxes supported printer and scanner.

Installation

For installation instructions, see the Xerox FreeFlow Accxes Drivers and Client Software Installation Guide. The ACT and AMT software can be installed at the same time.

Account Management Tool Overview

Overview

The FreeFlow Accxes Account Management Tool (AMT) also runs on a Windows, Linux, Mac OS X or Solaris workstation. This application is used to retrieve job accounting data from multiple printers that use FreeFlow Accxes firmware, version 6.2 or greater.

Installation

For installation instructions, see the Xerox FreeFlow Accxes Drivers and Client Software Installation Guide. The Accxes Client Tools and Account Management Tool software can be installed at the same time.

Drivers

HP-GL/2, AutoCAD and PostScript Drivers are supported by the Accxes controller.

Installation

For installation instructions, see the Xerox FreeFlow Accxes Drivers & Client Software Installation Guide.

