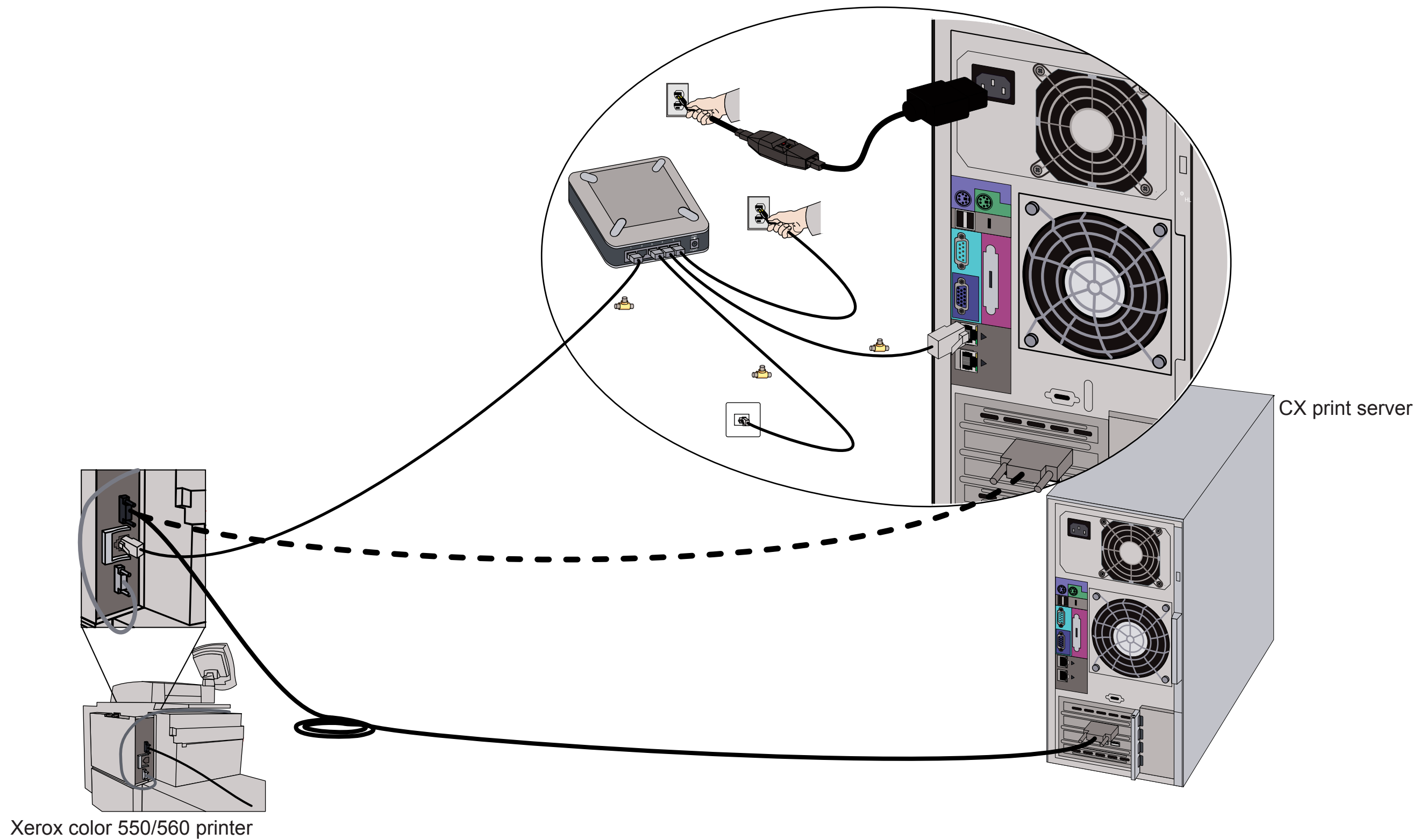




Visual Reference Guide

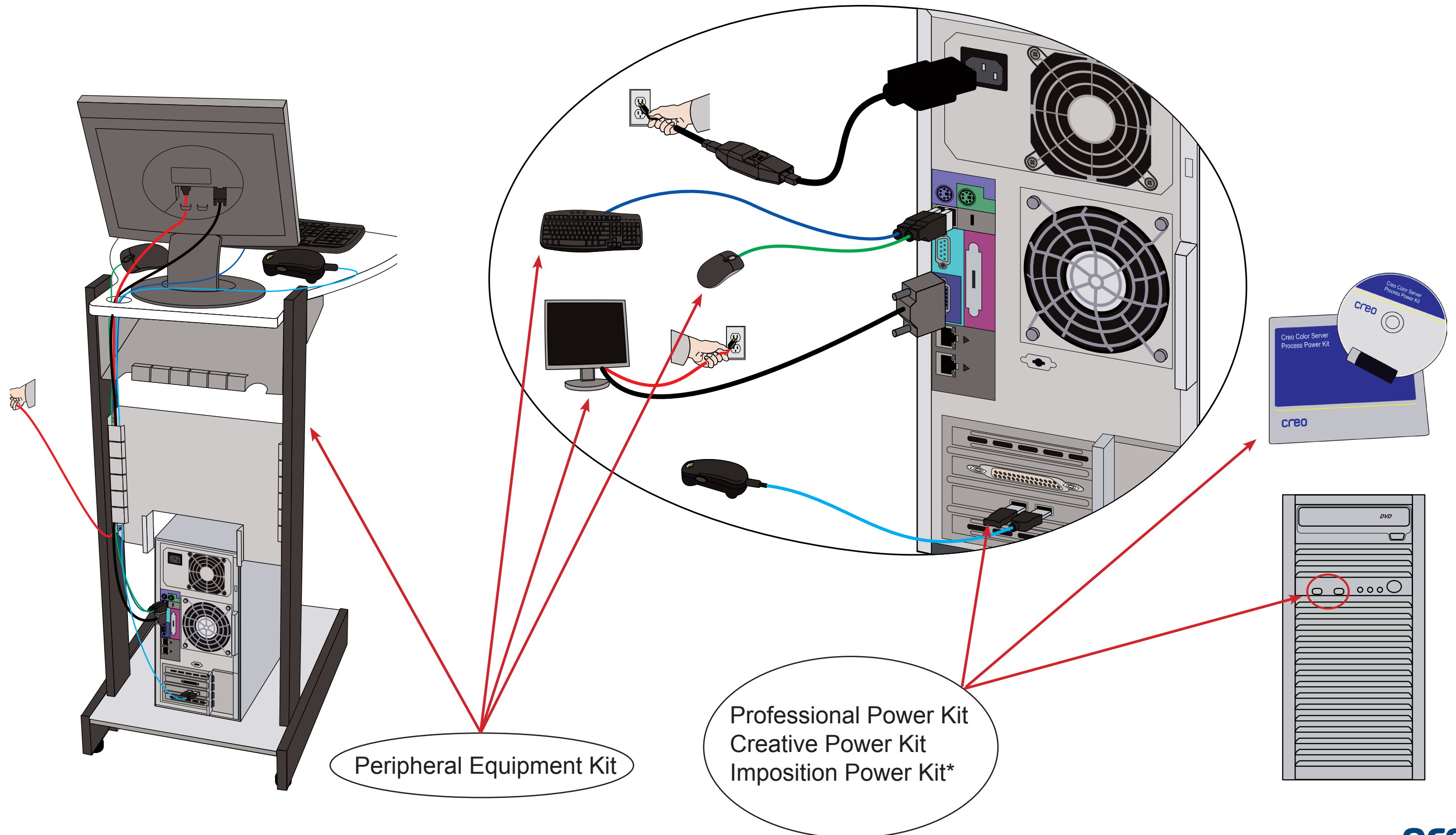
Xerox CX Print Server
Powered by Creo Color Server Technology
for the Xerox Color 550/560 Printer

Cable connections for the CX print server computer



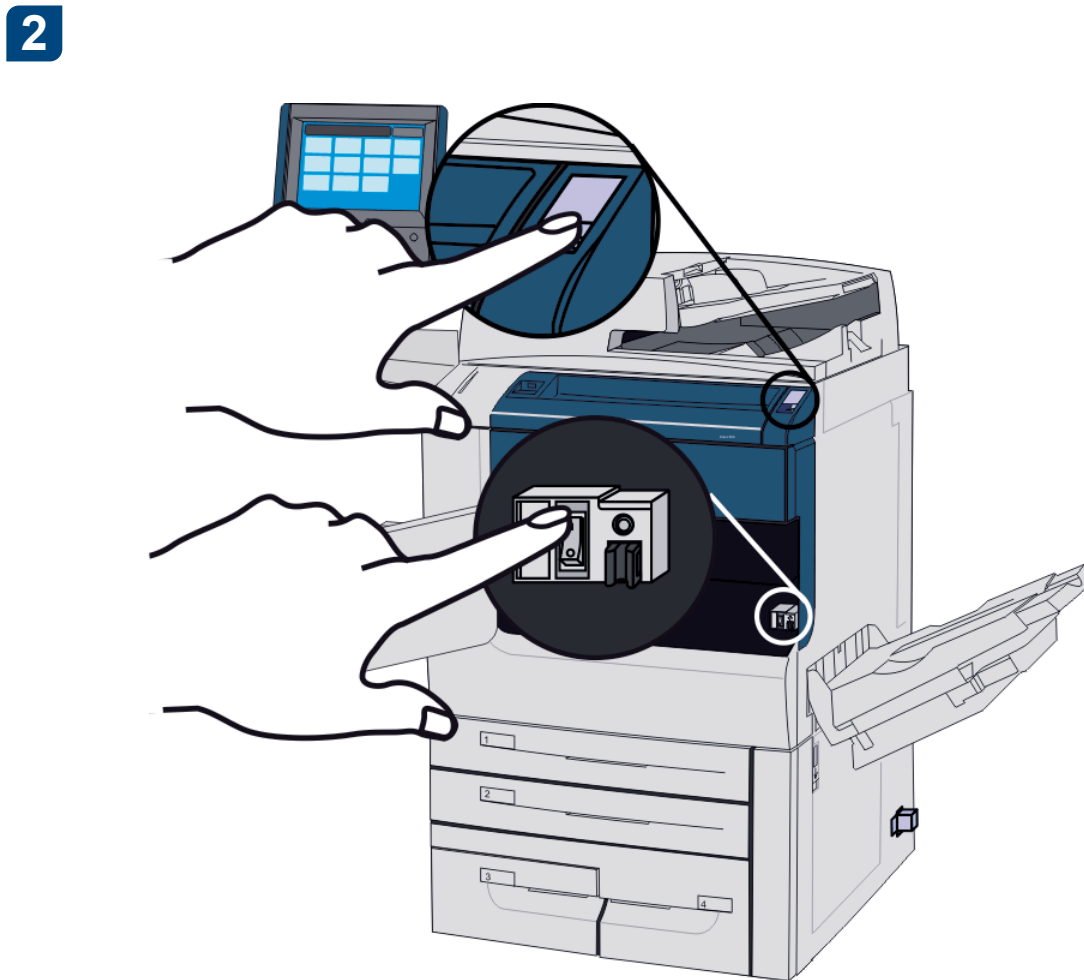
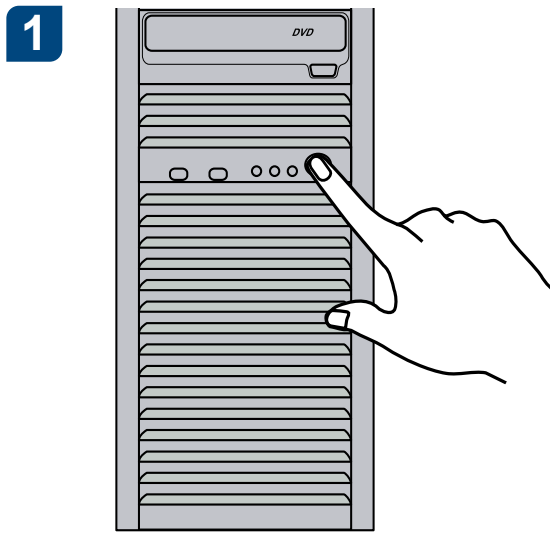
Optional kits for the CX print server

The CX print server provides four optional kits each of which requires a USB dongle.



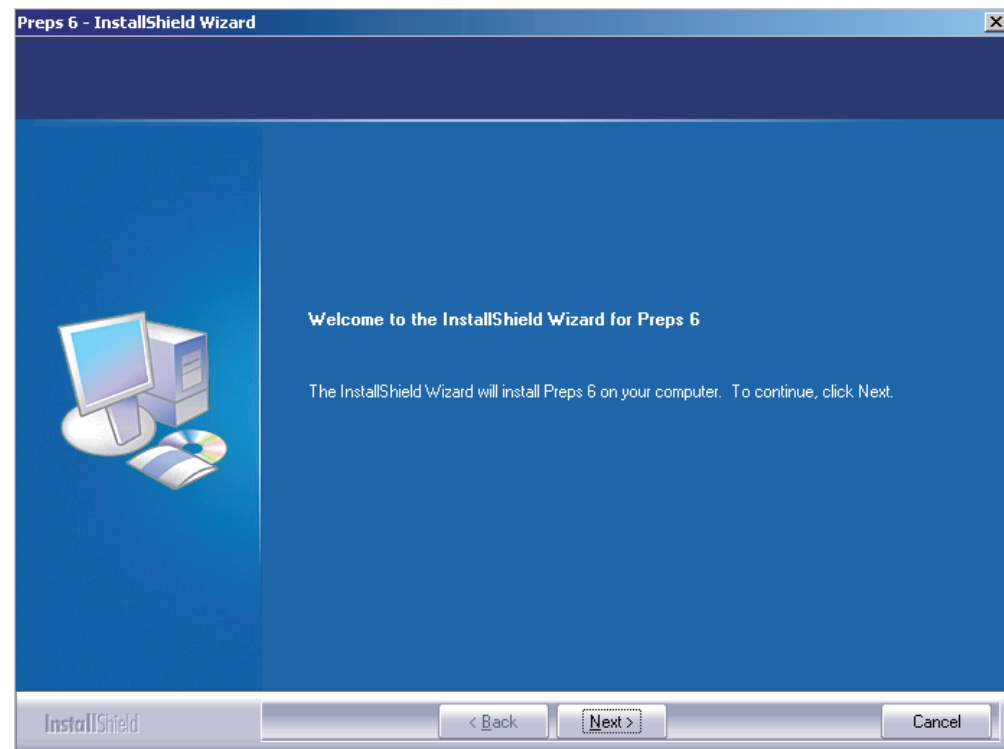
* The Imposition Power Kit should be installed by the customer.

Turning on the CX print server and turning on the printer



Installing the Imposition Power Kit

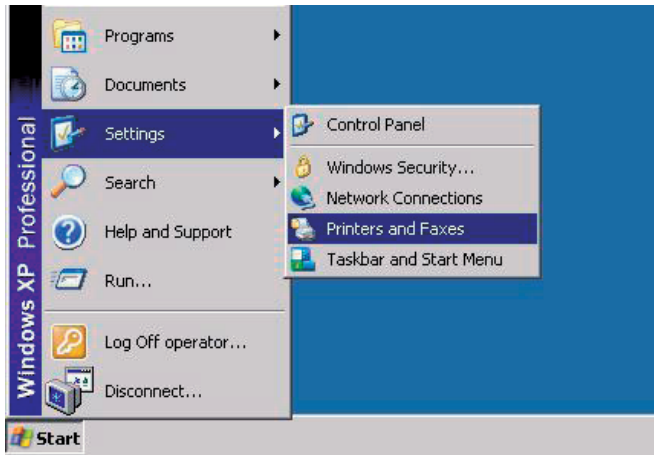
- 1 Log onto your computer as an Administrator.
- 2 Obtain the software files. The **Preps_6-0-0_Win_Installer.exe** file is available on the DVD.
- 3 Insert the DVD, and double-click the **.exe** file.
- 4 Click **Install** and follow the onscreen instructions until the installation is complete.
- 5 When the iKey driver Window appears, type your license key to complete the installation.



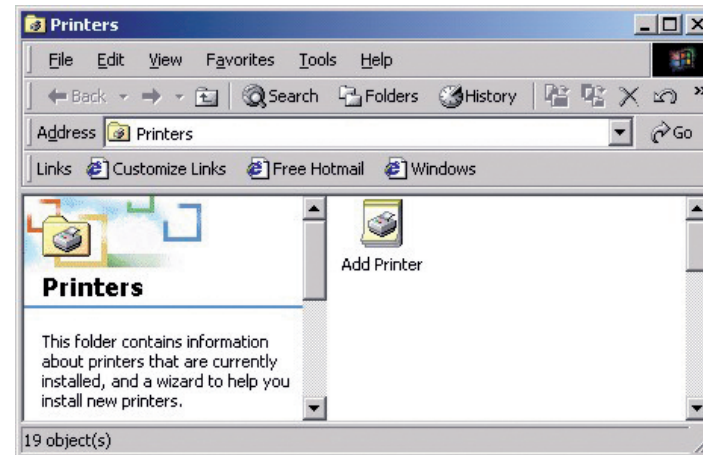
Setting up a network printer - Windows Server 2008/2003/XP

This procedure applies to Windows Server 2008, Windows Server 2003, and XP.

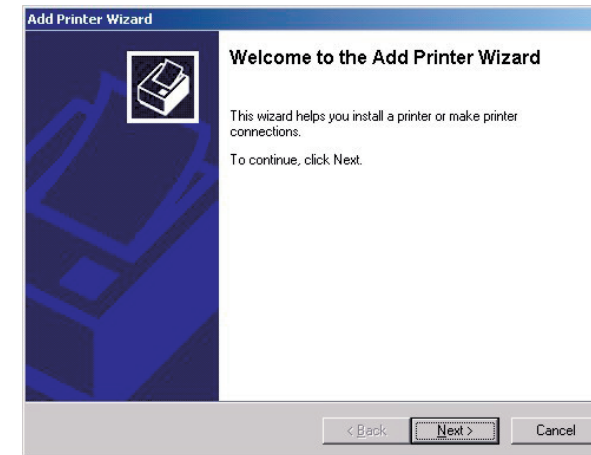
- 1** Select **Start > Settings > Printers and Faxes**.



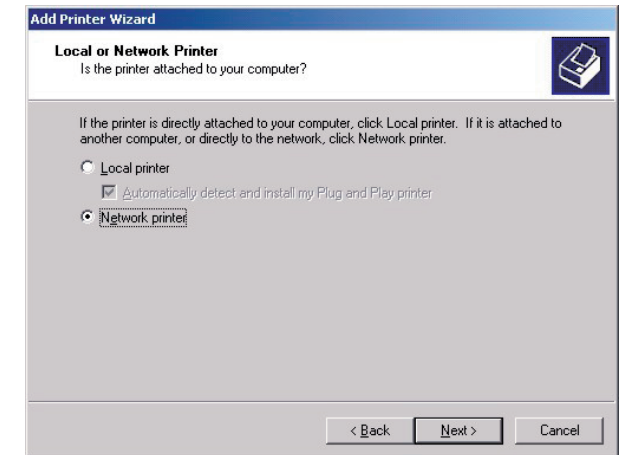
- 2** Double-click **Add Printer**.



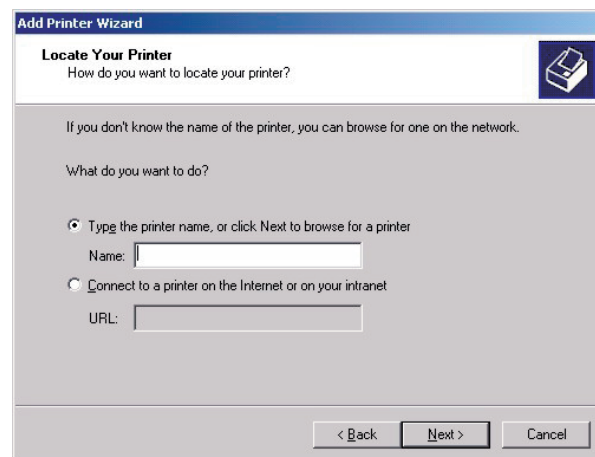
- 3** In the Add Printer Wizard, click **Next**.



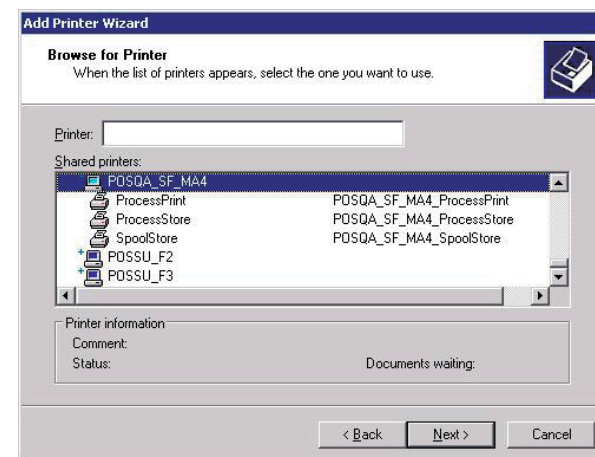
- 4** Select **Network printer**, and then click **Next**.



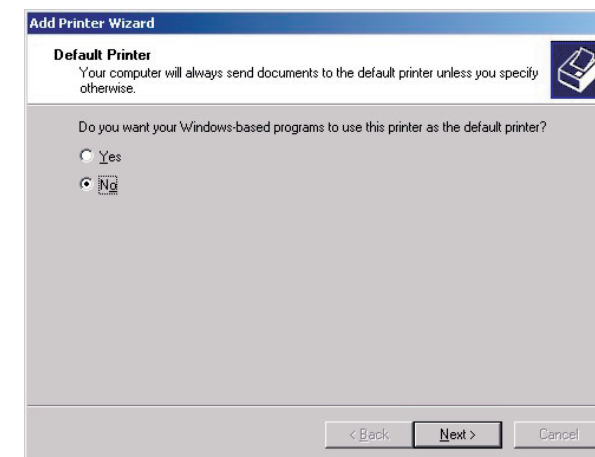
- 5** Type the CX print server name, or click **Next** and locate the server.



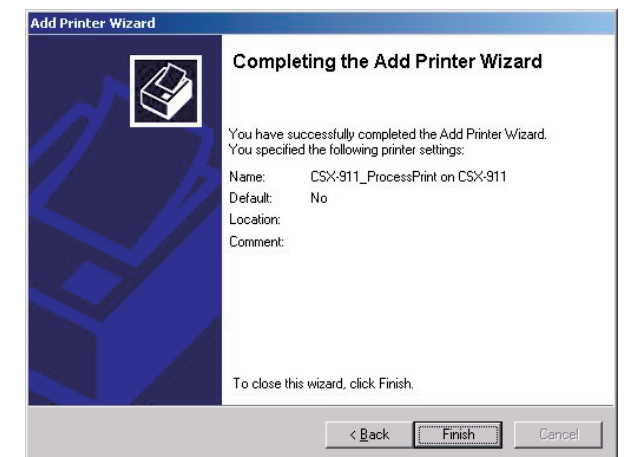
- 7** Select one of the network printers, for example—**ProcessPrint**—and then click **Next**.



- 8** Select whether you want this to be the default printer, and then click **Next**.



- 9** Click **Finish** to complete the setup.



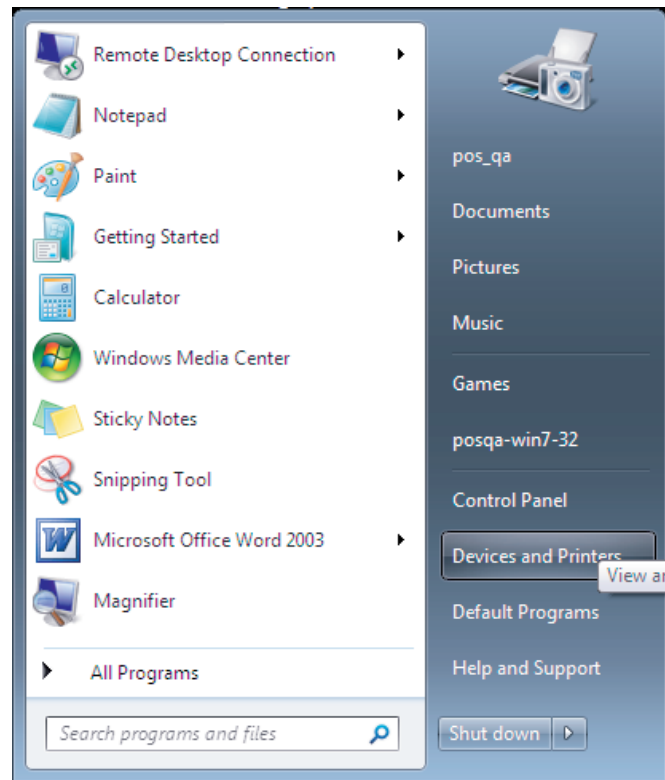
- 6** In the **Shared printers** area, double-click the server name to display the list of network printers.

Note:When you add a network printer, the Print Driver software is installed on your computer.

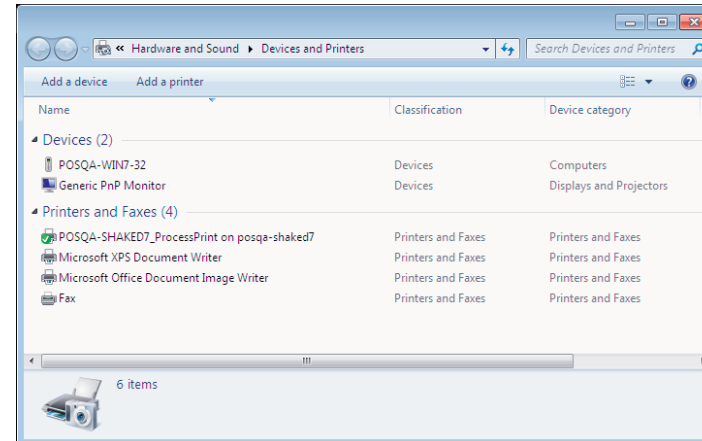
Setting up a network printer - Windows 7/Vista

This procedure applies to Windows 7 and Vista.

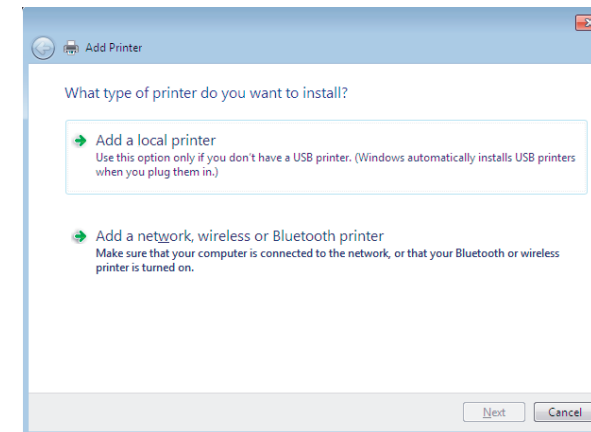
- 1 From the **Start** menu, select **Devices and Printers**.



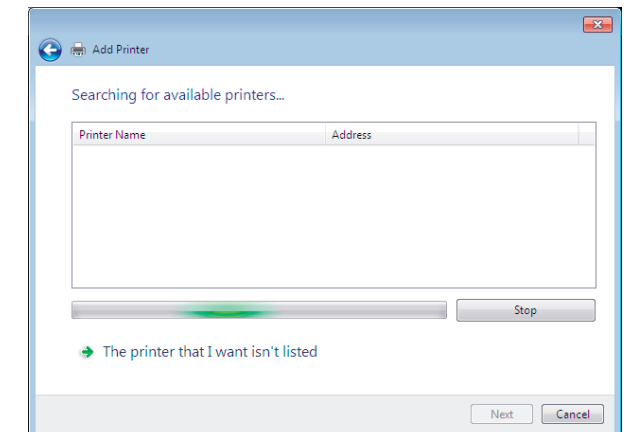
- 2 Select **Add a printer**.



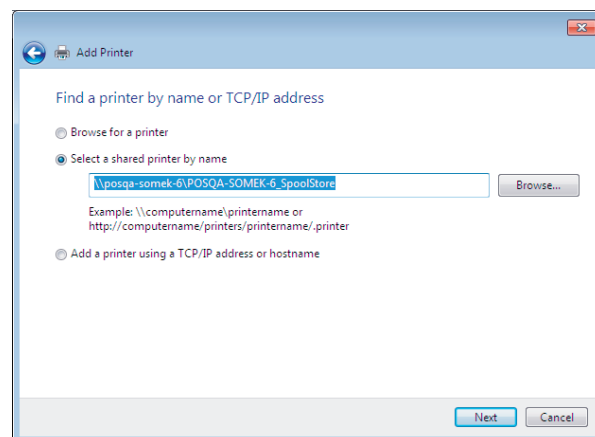
- 3 In the Add Printer wizard select **Add a network, wireless or Bluetooth printer**.



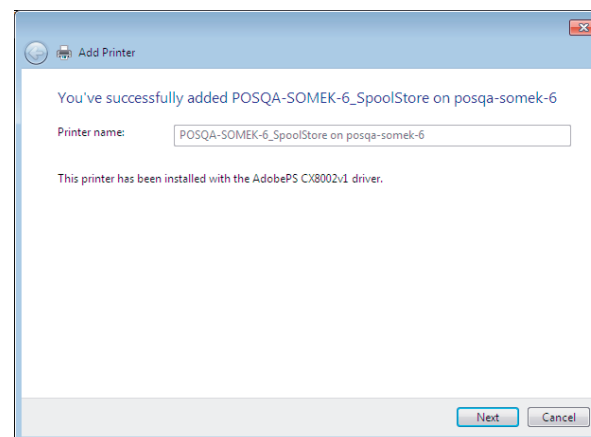
- 4 Select **The printer that I want isn't listed**.



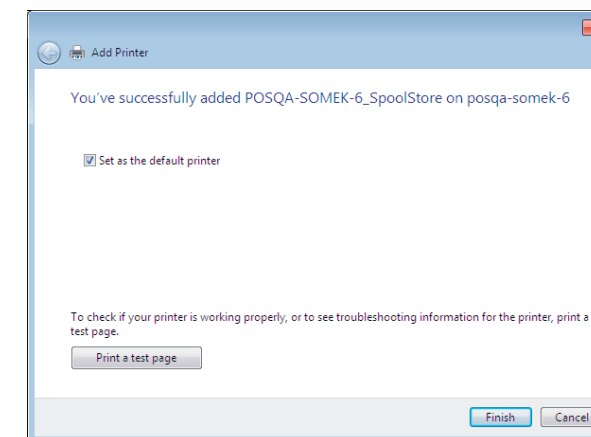
- 5 In the **Select a shared printer by name** box, type the CX print server name, and click **Next**.



- 6 Click **Next**.



- 7 Select whether you want this to be the default printer, and then click **Finish** to complete the setup.

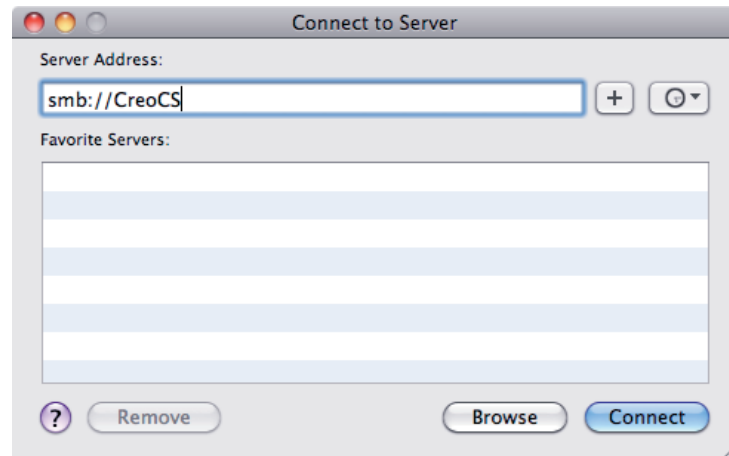


Note:When you add a network printer, the Print Driver software is installed on your computer.

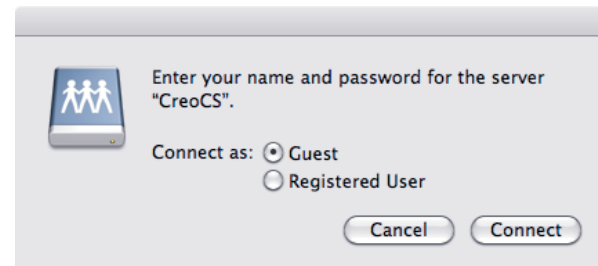
Installing the Print Driver software on Mac OS X 10.6.x

1 Choose **Go > Connect to Server**.

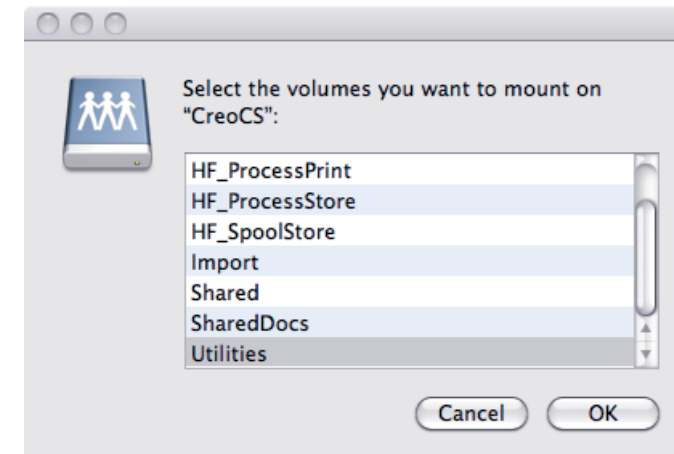
2 In the **Server Address** box, type your server address, and click **Connect**.



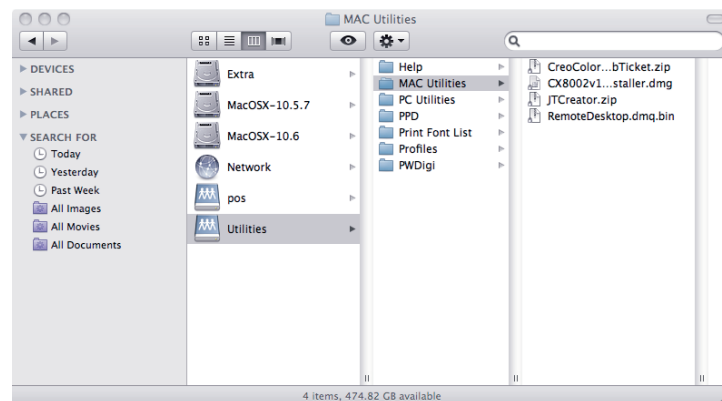
3 Select **Guest** and then click **Connect**.



4 Select **Utilities**, and click **OK**.

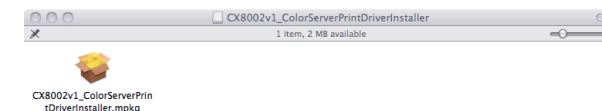


5 Select the Mac Utilities folder.



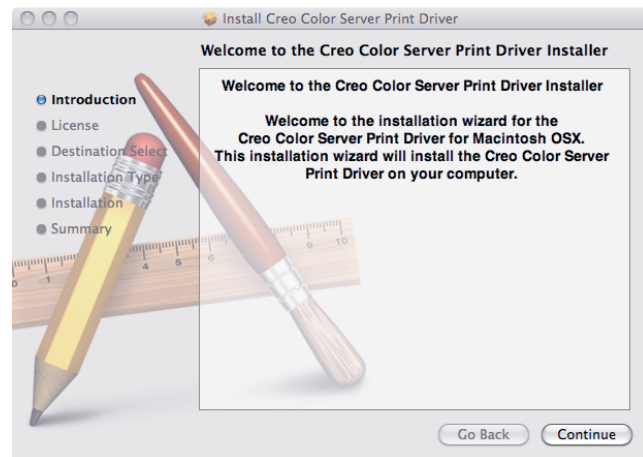
6 Double-click the relevant **ColorServerPrintDriverInstaller.dmg** file.

7 Double-click the relevant **ColorServerPrintDriverInstaller.mpkg** file.

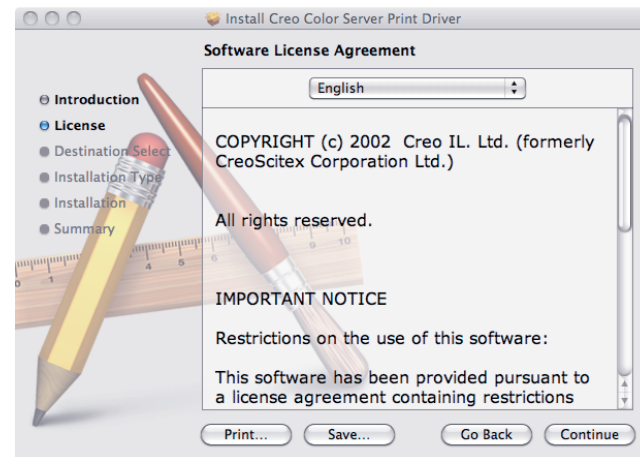


Installing the Print Driver software on Mac OS X 10.6.x (cont.)

8 Click **Continue**.



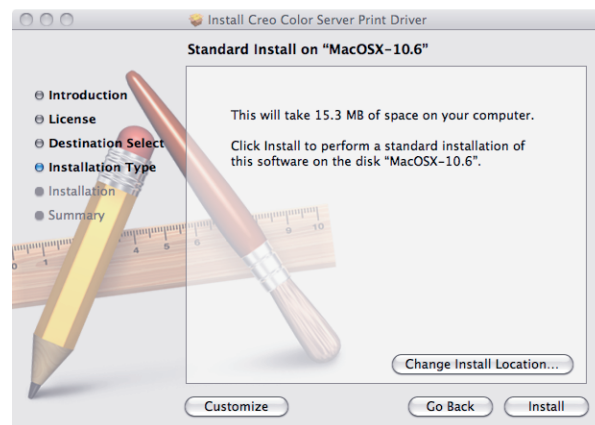
9 In the Software License Agreement window, click **Continue**.



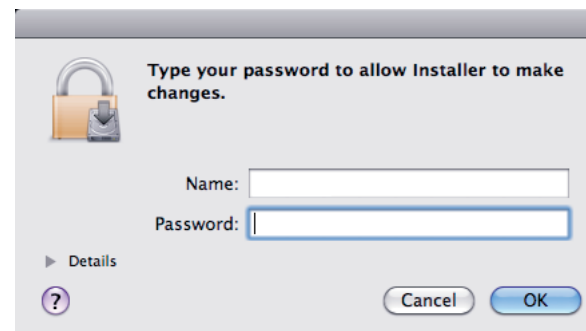
10 Click **Agree** to agree to the terms and continue with the installation procedure.



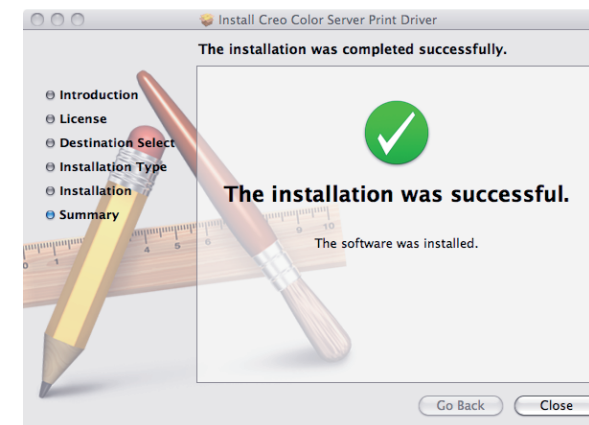
11 Click **Install**.



12 Type your name (if necessary) and password, and click **OK**.



13 Click **Close**.



The Print Driver software is installed.

Defining a printer with the Print Driver software in Mac OS X 10.6.x

During the installation of the Print Driver software, the PPD file is automatically copied to your computer.

Requirements:

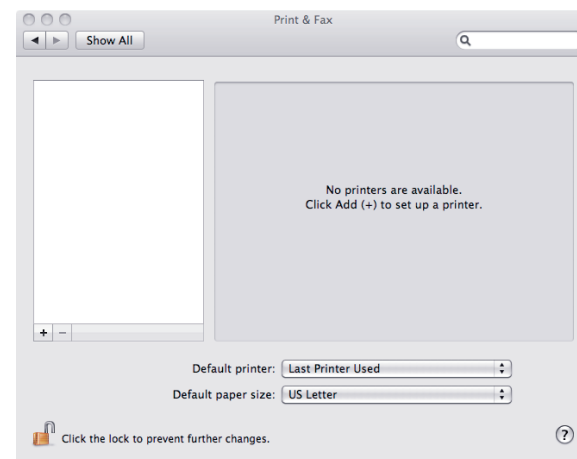
Have the following information available before performing this procedure:

- The IP address and computer name of your CX print server
- The name of the virtual printer that you want to use with the Print Driver software

1 On your Mac computer, open the System Preferences window and double-click **Print & Fax**.

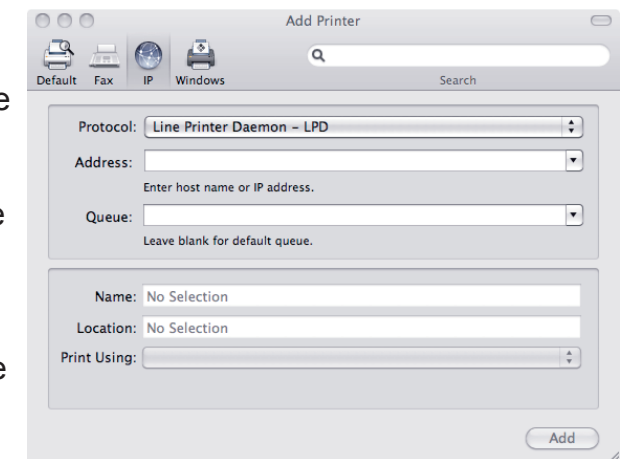


2 In the Print & Fax window, click the **Add (+)** button.

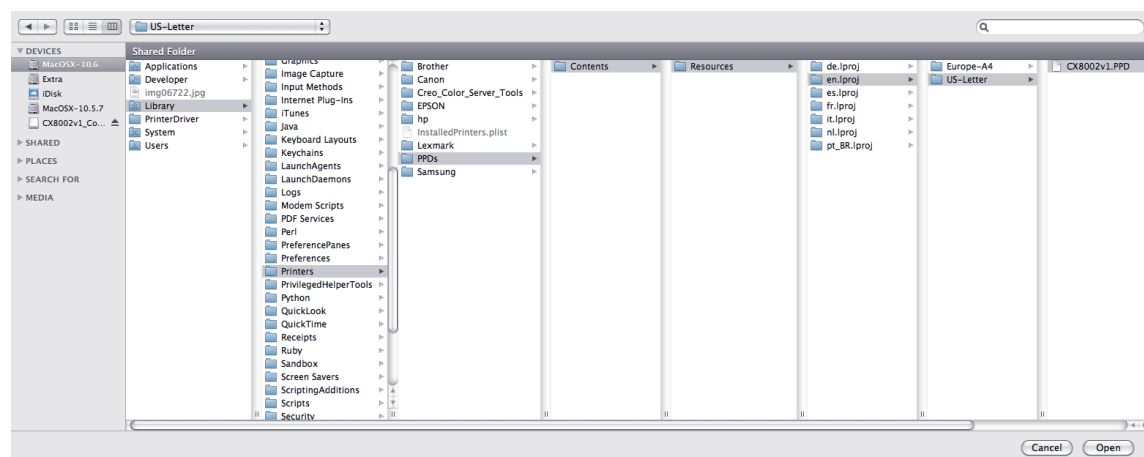


3 In the Add Printer window, enter the following information:

- In the **Address** box, type the host name (or IP address) of your CX print server. In the **Queue** box, type the name of the CX print server and the exact name of the virtual printer that you want to use with the Print Driver software—for example—CreoCS_Process.
- In the **Name** box, type exactly the same name as in the **Queue** box.
- In the **Print Using** list, select **Other**.

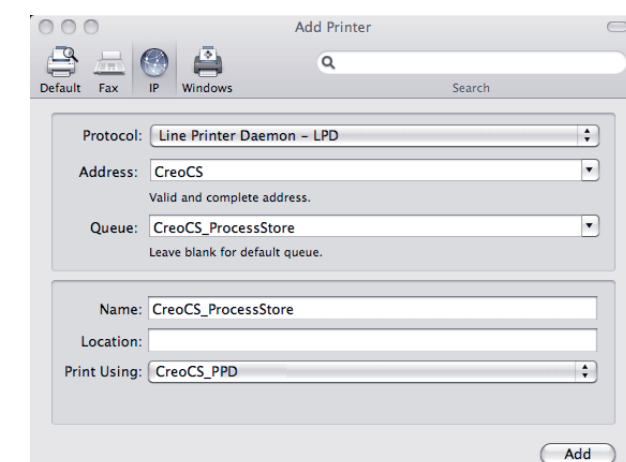


4 Locate the **en.lproj** folder in **Library/Printers/PPDS/Contents/Resources**; select either the **Europe-A4** or **US-Letter** folders, and then select the PPD file.



5 Click **Open**.

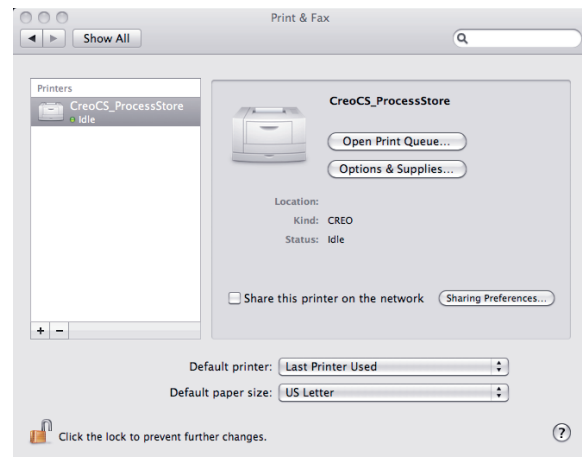
6 Click **Add**.



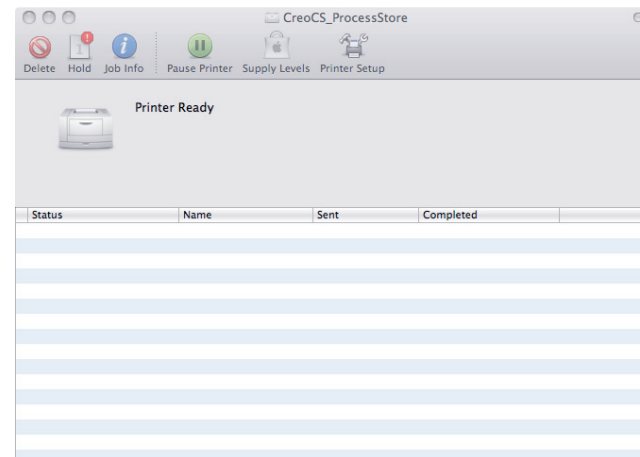
The new printer is added.

Defining a printer with the Print Driver software in Mac OS X 10.6.x (cont.)

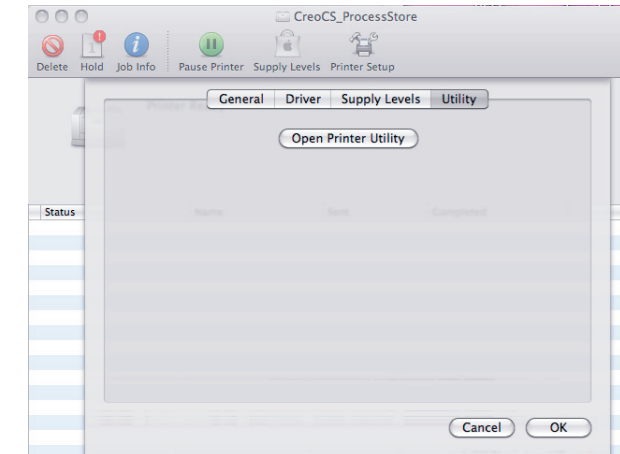
- 7** In the Print & Fax window, select the printer and click **Open Print Queue**.



- 8** Click **Printer Setup**.



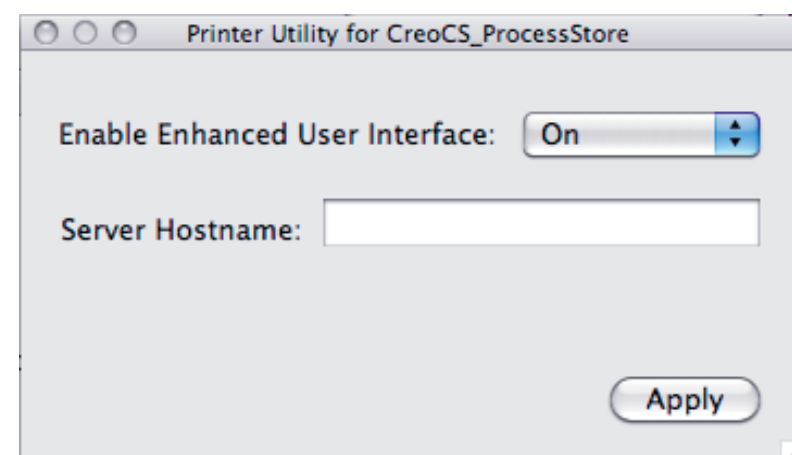
- 9** Click **Utility**, and then click **Open Printer Utility**.



- 10** In the **Enable Enhanced User Interface** list, make sure that **On** is selected.

- 11** In the **Server Hostname** box, type the IP address of the server.

- 12** Click **Apply**.



- 13** Close the Printer Utility dialog box.

- 14** Click **OK**.

- 15** Close all printer windows.



For more information about **Creo** Branded Products, contact your local representative or visit www.creoservers.com.

Americas	Israel	EMEA and Asia Pacific
42-06A Bell Blvd.	Ha'Tnufa 7 St.	Rue Général de Gaulle 62
Box 101	P.O. Box 10193	B-1310 La Hulpe, Belgium
Bayside, NY 11361, USA	Petach Tikva 49002, Israel	T.+32.2.352.2878
T.+1.866.793.4178	T.+972.3.916.7222	F.+32.2.357.3111
info-us@creoservers.com	F.+972.3.928.6000	info-eu@creoservers.com
	info@creoservers.com	

