

Creo Color Servers - the Experts in Workflow Connectivity

Creo Color Servers are backed by a strong track record in workflow, and engineered to provide your business with a sustainable competitive advantage. They allow seamless integration of digital production presses in various production workflows, without any need for additional utilities, plug-ins or costly options. **Creo Color Servers** benefit from broad connectivity through strong alliances with leading workflow and VDP vendors. They support automation with tested, flexible, industry-standard open connectivity, including built-in **JDF** (Job Definition Format) and tight bi-directional integration with the other workflow solutions on your print production floor.

*Read more in the **Creo Color Servers - the Experts in Workflow Connectivity** datasheet.*

- Easily automate a VDP job from **Darwin** Software all the way to print
- Launch a **Creo Color Server** job ticket from within **Darwin** Software
- View printer resources, and mismatches with job properties (e.g. media, finishers) from **Darwin** Software
- View job status from **Darwin** Software (e.g. in process, in print, errors)

About Kodak Darwin VDP Software

Kodak Darwin VDP Software is a true production tool for generating personalized marketing communications. **Darwin** Software makes it easy to create templates for variable documents, and set the business rules that apply to the different target audiences. The business rules are then translated into a variety of design and/or content schemes, with personalized charts or images, and connected to customer data from a range of databases. With **Darwin** Software, anything can be variable—text, graphics, color, layers, barcodes, character styles, and backgrounds. Entire pages can vary—even the paper stock and the number of pages in a catalog or magazine. With **Darwin** Software, you can create anything from personalized business card templates, to powerful, tightly-focused variable documents with personalized marketing impact.

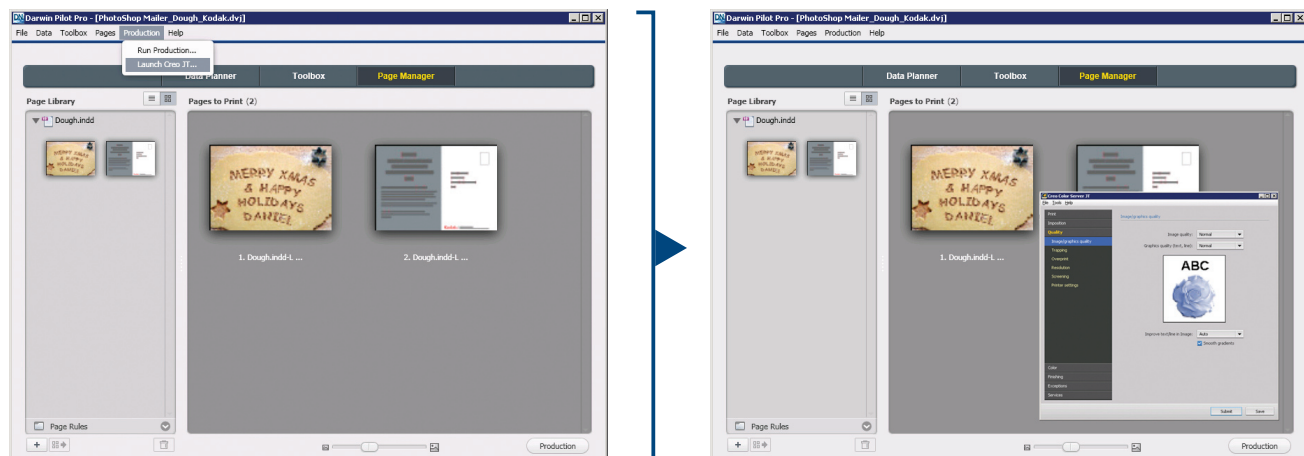
Creo Color Server and Kodak Darwin VDP Software Connectivity

The setup process for a VDP (Variable Data Printing) job is simple and intuitive. The **Creo Color Server Job Ticket Software** (that holds all the job properties and syncs them with the **Creo Color Server**) is fully integrated into the **Darwin** Software. This way, you have full control over your VDP job properties, plus the connectivity enables tracking of the printer and its resources. Furthermore, both solutions share the same roadmap, for an assurance of synchronized improvements in connectivity, and features in the future.

A Typical VDP Scenario

The process below describes a typical VDP workflow for reprinting a variable job. The initial setup time is paid off each time the job is re-run. VDP jobs are commonly re-printed, sometimes with slight changes in data or content, and facilitating quicker re-runs is the way to provide a competitive service that increases in profitability on each job.

Steps	Darwin VDP Software flow	Creo Color Server flow
Step 1: Select the VDP job and the customer data	<ul style="list-style-type: none"> Choose the Darwin Software job to reprint Populate it with new customer data, or assign a large customer database to it <p>When you run the Darwin Software job, the VDP job is created</p>	
Step 2: Connect to the Creo Color Server	<ul style="list-style-type: none"> From Darwin Software, launch the Creo Color Server Job Ticket Software Select a Creo Color Server driving a digital press 	<ul style="list-style-type: none"> The Creo Color Server communicates with the Creo Color Server Job Ticket Software for printer resources, and reports status
Step 3: Submit the VDP job	<ul style="list-style-type: none"> Load a preset Job Ticket file that fits the VDP job properties The Job Ticket Software plug-in on Darwin Software reflects mismatches received from the Creo Color Server If OK it submits the job to the Creo Color Server 	<ul style="list-style-type: none"> The Creo Color Server scans for mismatches between the job ticket and digital press resources (e.g. correct media, finishing device, etc.), and flags them It acknowledges the job submission and reports ongoing job status
Step 4: Track printer status	<ul style="list-style-type: none"> View real-time printer status, consumables, and other resources 	<ul style="list-style-type: none"> The Creo Color Server sends printer status messages to the Job Ticket Software on Darwin Software
Step 5: Post press operations	<ul style="list-style-type: none"> Set post-print properties (e.g. finisher profile, imposition settings, etc.) on the Job Ticket Software 	<ul style="list-style-type: none"> Forward to next workflow devices (e.g. finishing, binding) job properties



The **Creo** Color Server's Job Ticket Software can be viewed from within **Darwin** Software

For more information about **Creo** Branded Products, contact your local representative or visit www.creoservers.com

Americas

42-06A Bell Blvd
Box 101
Bayside, NY 11361, USA
T.+1.866.793.4178
info-us@creoservers.com

Israel

Ha'Tnufa 7 St.
P.O. Box 10193
Petach Tikva 49002, Israel
T.+972.3.916.7222
F.+972.3.928.6000
info@creoservers.com

EMEA and Asia Pacific

Rue Général de Gaulle 62
B-1310 La Hulpe, Belgium
T.+32.2.352.2878
F.+32.2.357.3111
info-eu@creoservers.com

Subject to technical change without notice. Kodak, Creo, and Darwin are trademarks of Kodak. All other trademarks are the property of their respective owners.

04/10

650-00953A-EN

creo
COLOR SERVERS