

Internal:
Release date: 17- February- 2011

Technical Bulletin

Installing MixPageSize patch for the Xerox CX Print Server for the Xerox Color 550/560 Printer

Version 1 Service Pack 1

Problem description

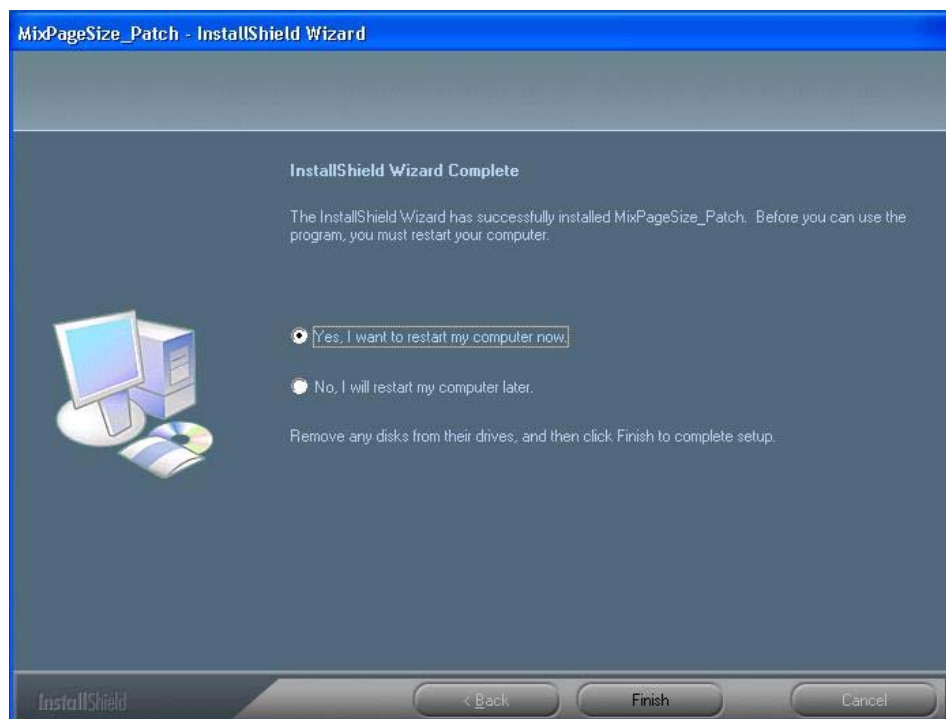
When you select the "Mixed page size document" feature, it will force the 8.5x11 LEF pages to be printed SEF, the job won't print if LEF paper is in the tray.

Solution

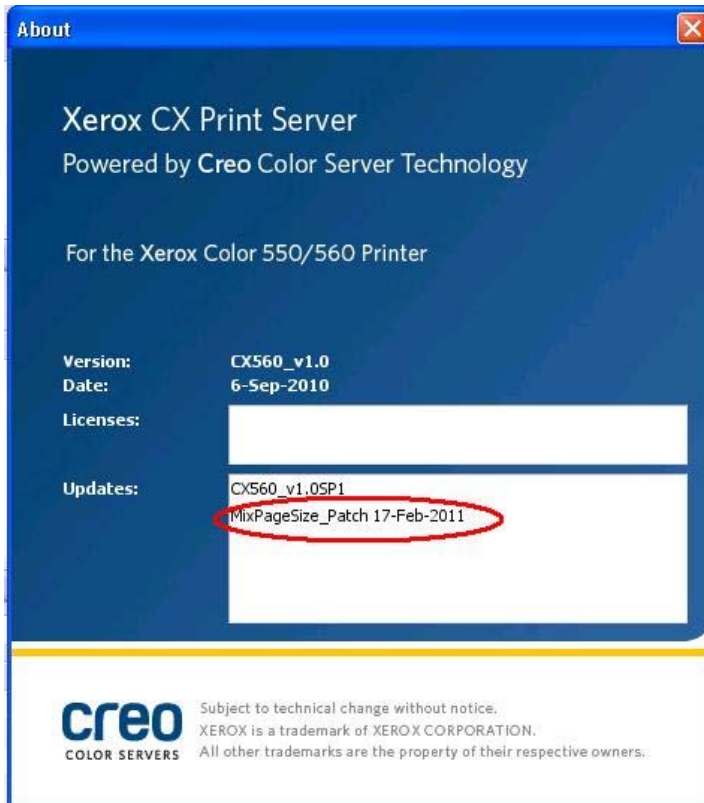
Install the **MixPageSize_Patch** on the CX print server software.

Installation procedure

1. Exit the CX print server software.
2. Copy the **MixPageSize_Patch.zip** file to the CX print server, and extract the file.
3. Double-click the **MixPageSize_Patch.exe** file.



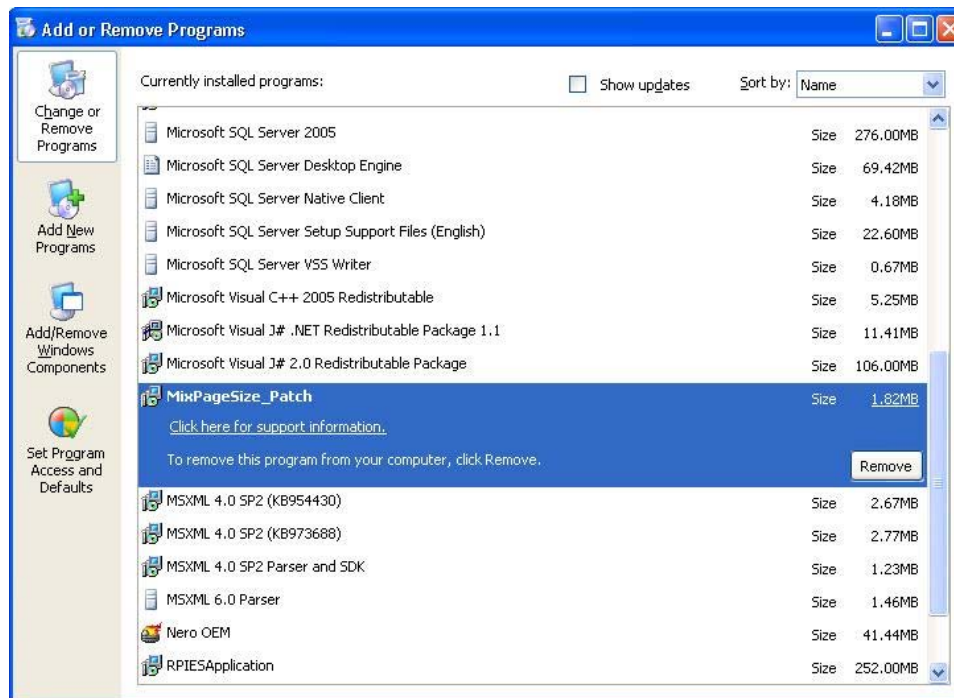
4. In the InstallShield Wizard, click **Finish**.
5. Start the CX print server software.
6. Verify that the patch was installed successfully:
 - a. From the **Help** menu, select **About**.
 - b. In the **Updates** box, make sure that **MixPageSize_Patch 17-Feb-2011** appears.



Uninstalling the patch

Perform the following procedure to uninstall the **MixPageSize_Patch**.

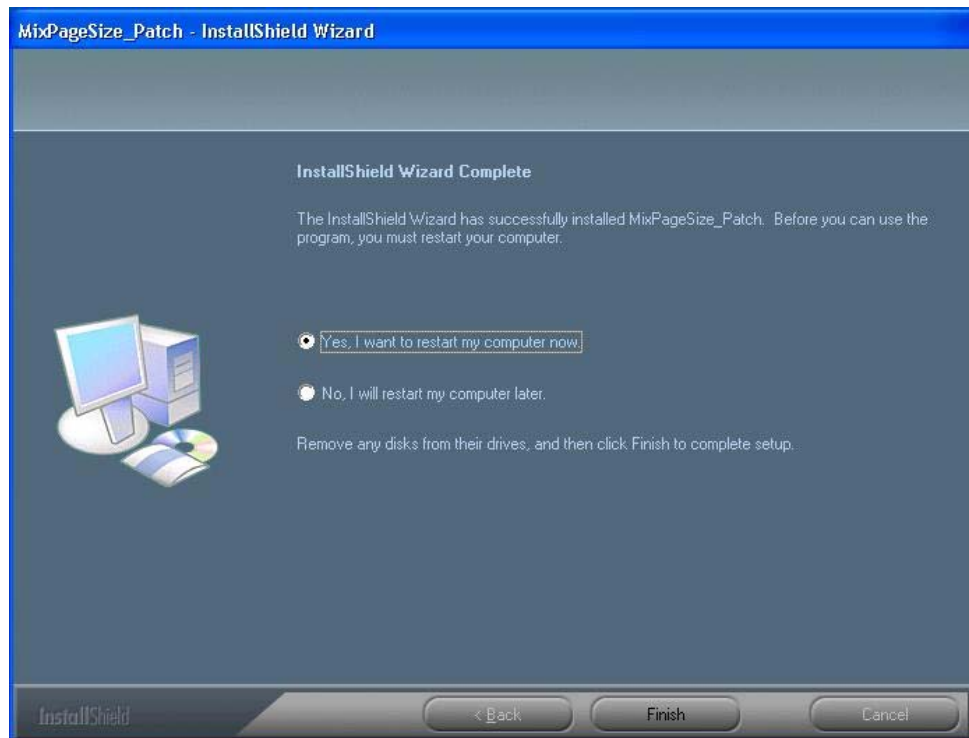
1. Exit the CX print server software.
2. From the **Start** menu, select **Setting > Control Panel**, and then double-click the **Add or Remove Programs**.



- From the **Currently installed programs** list, select the **MixPageSize_Patch** and then click **Remove**.



- Click **Yes**, to confirm removing the patch.



5. In the InstallShield Wizard, click **Finish**.
6. Start the CX print server software.
7. From the **Help** menu, select **About** and verify that the patch was successfully removed.

About Print On-Demand Solutions Group

The Print On-Demand Solutions Group develops high-performance CREO Color Servers and workflow solutions for a wide range of digital production printers and presses. CREO Color Servers offer the digital printing industry leading workflow connectivity solutions. They utilize intelligent, JDF-enabled automation of all print-production steps to help drive business performance and profit.

This independent unit of Eastman Kodak Company continues to unlock the power of print on-demand to maximize customers' success in digital printing and workflow solutions.

For more information about CREO Color Servers, visit www.creoservers.com.

© Kodak, 2011. All rights reserved. Creo is a trademark of Eastman Kodak Company. Adobe, Acrobat, Adobe Illustrator, Distiller, Photoshop, PostScript, and PageMaker are trademarks of Adobe Systems Incorporated. Apple, AppleShare, AppleTalk, iMac, ImageWriter, LaserWriter, Mac OS, Power Macintosh, and TrueType are registered trademarks of Apple Computer, Inc. Macintosh is a trademark of Apple Computer, Inc., registered in the U.S.A. and other countries. PANTONE, Hexachrome, PANTONE Goe, PANTONE Hexachrome, and PANTONE MATCHING SYSTEM are the property of Pantone, Inc. PEARL, PEARLsetter, PEARLhdp, PEARLdry, and PEARLgold are registered trademarks of Presstek, Inc. Technical data subject to change without notice.