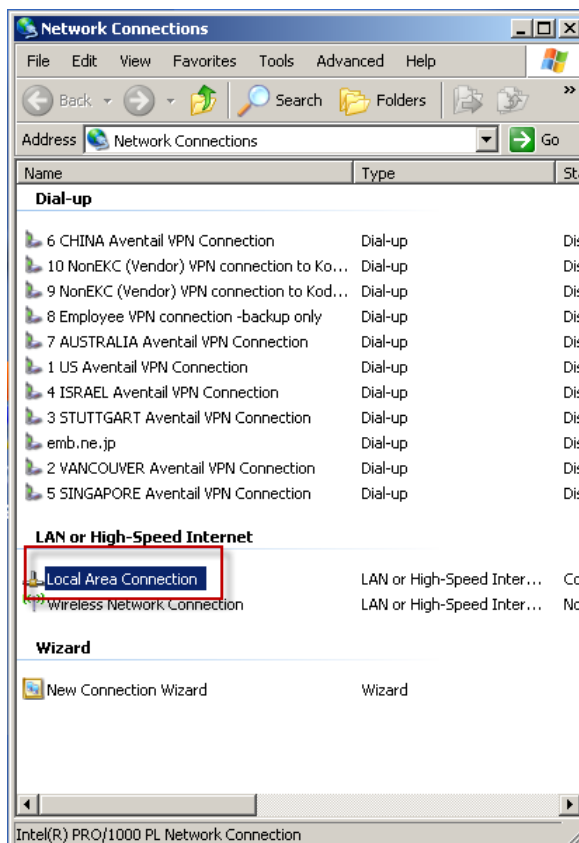


Setting up Static IP for the Creo Color Server

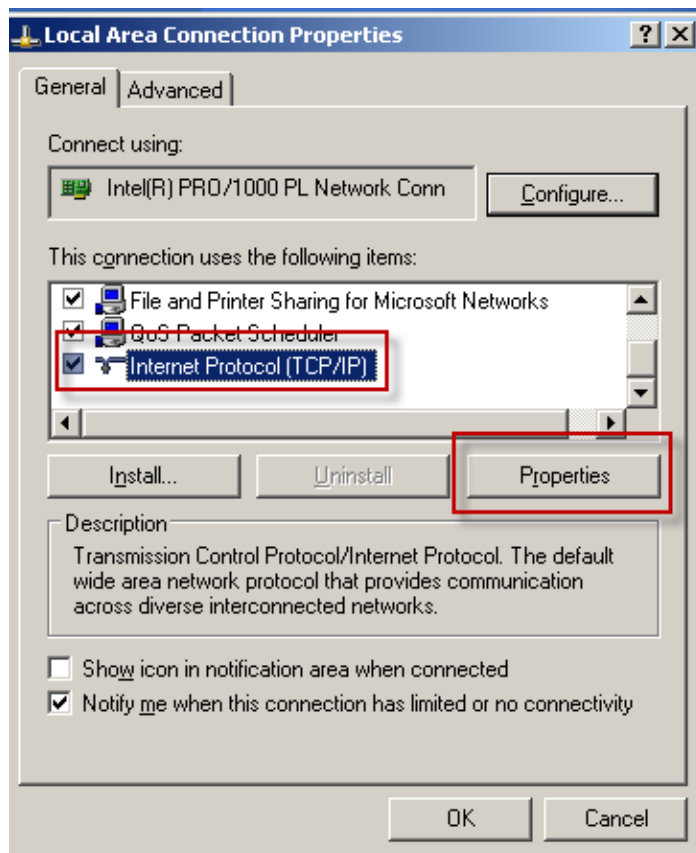
In case of a static IP conflict at a customer site, and no keyboard, mouse and monitor attached to the Color server, the following procedure is recommended.

In case you are working with PC:

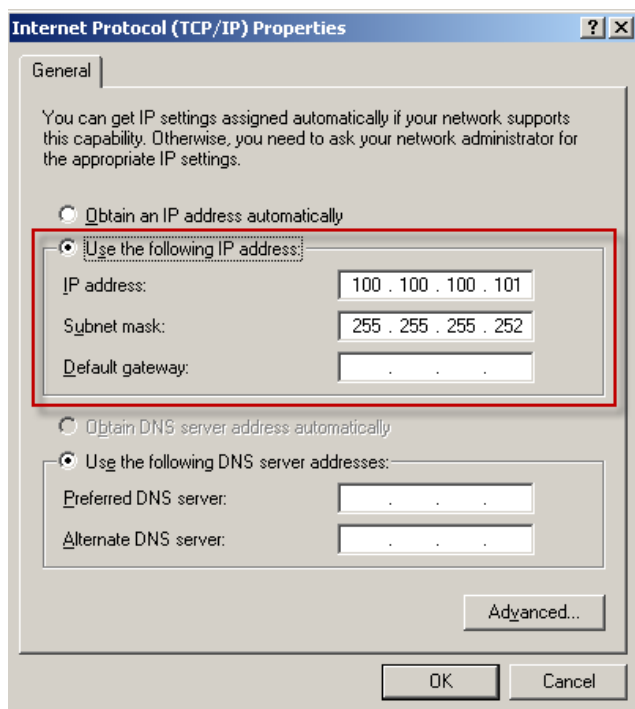
1. Connect a network cable between the scan network adapter of the CX print server to a PC.
2. On the connected PC, select **Start > Settings > Network connections**.
3. Right- click on the Local Area Connection.



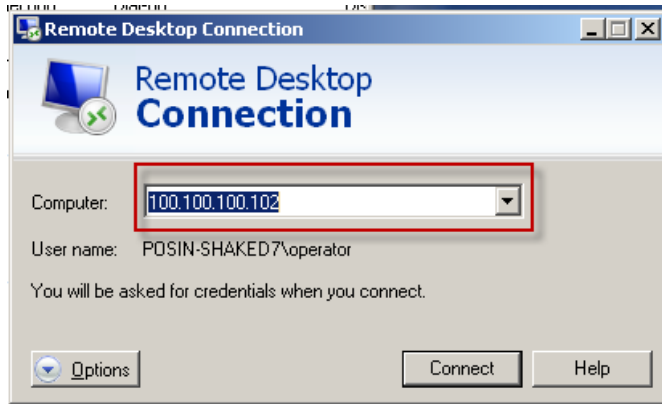
4. Select the Internet Protocol (TCP/IP) and click the Properties button.



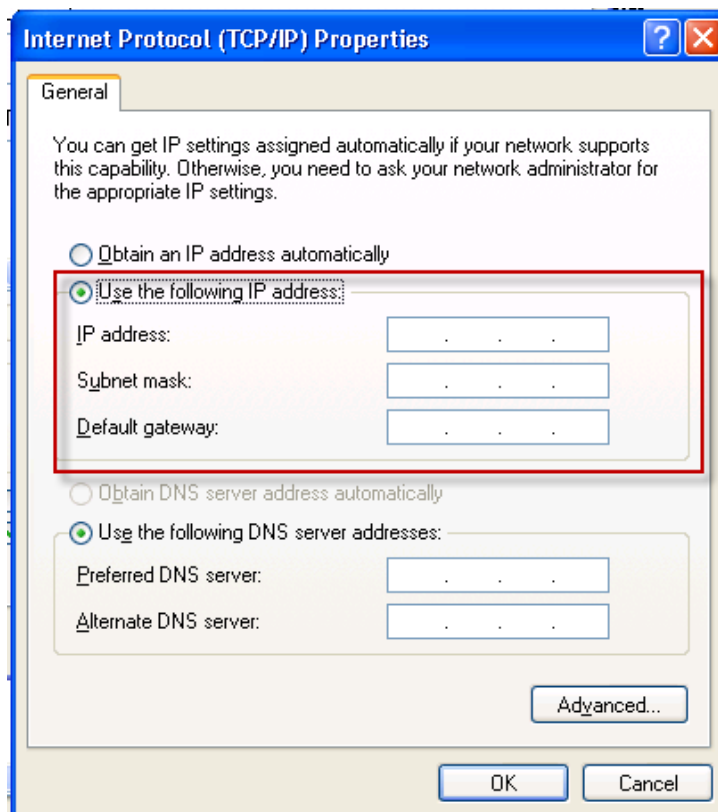
5. Select the Use the Following IP address and type:
IP address: 100.100.100.101
Subnet Mask: 255.255.255.252
Click OK.



6. On the connected PC, select **Start > Programs > Accessories>> Remote Desktop connection** and type in the computer name: 100.100.100.102.

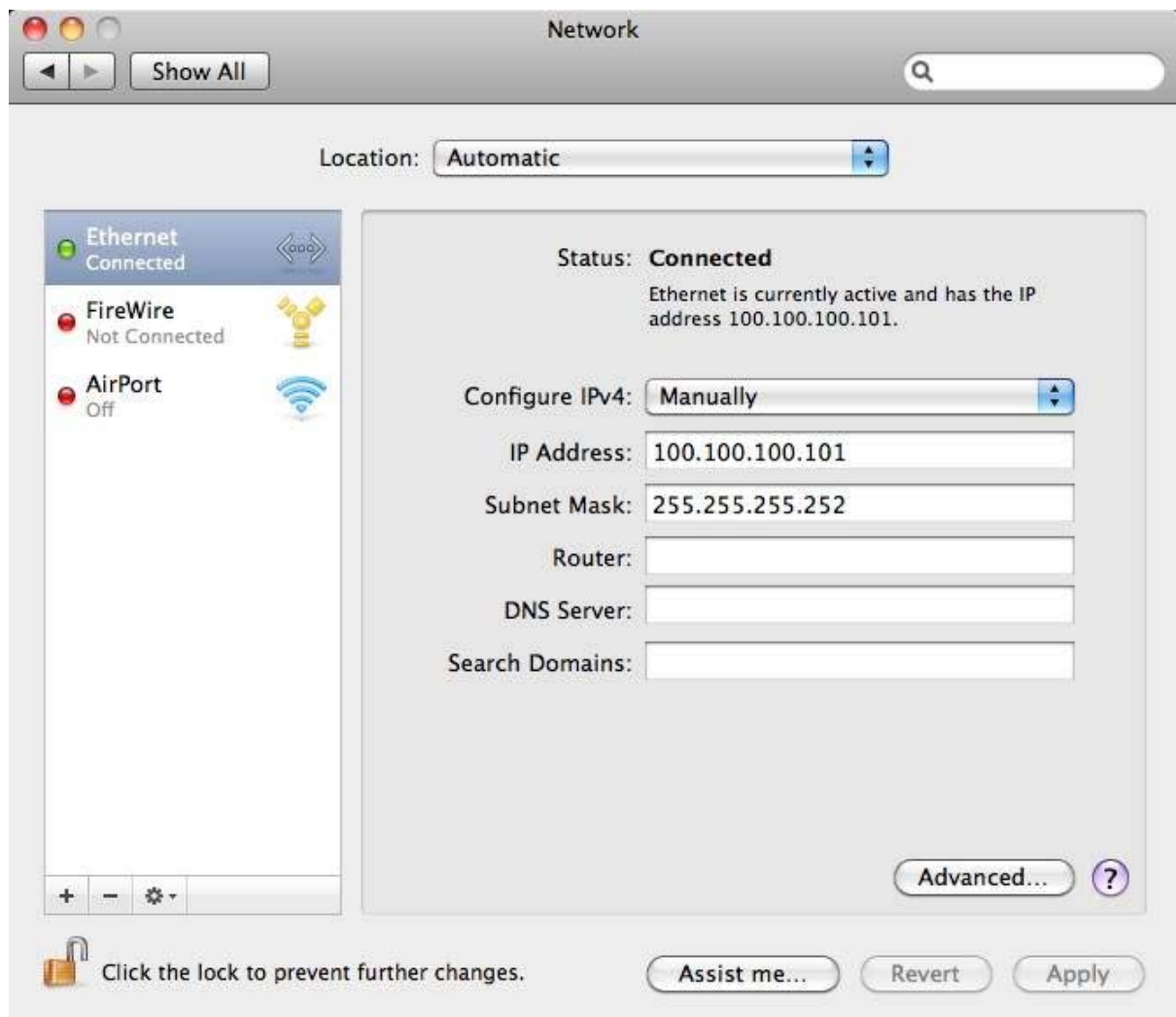


7. You are now connected to the CX print server remotely.
8. On the CX print server, select **Start > Settings > Network connections**.
9. Right-click the Local Network Connection and select **Properties**.
10. Select the Internet Protocol (**TCP/IP**) check box.
11. Click **Properties**.
12. In the **IP address** box, type the new static IP address and subnet mask.
13. Click **OK**.



In case you are working in Mac environment:

1. Make sure that Remote Desktop application (RDC) is installed on your Mac. If not, download and install it. Remote Desktop Connection (RDC) application is a free software that can be downloaded from Apple site at following location:
http://www.apple.com/downloads/macosx/networking_security/remotedesktopconnectionclient.html
2. Go to System Preferences -> Network (appear under "Internet & Wireless")
3. Fill form as noted in image below:



4. Using RDC application you can now connect to the Creo Color Server.

About Print On-Demand Solutions Group

The Print On-Demand Solutions Group develops high-performance CREO Color Servers and workflow solutions for a wide range of digital production printers and presses. CREO Color Servers offer the digital printing industry leading workflow connectivity solutions. They utilize intelligent, JDF-enabled automation of all print-production steps to help drive business performance and profit.

This independent unit of Eastman Kodak Company continues to unlock the power of print on-demand to maximize customers' success in digital printing and workflow solutions.

For more information about CREO Color Servers, visit www.creoservers.com.

Kodak, 2010. All rights reserved. Creo is a trademark of Eastman Kodak Company. Adobe, Acrobat, Adobe Illustrator, Distiller, Photoshop, PostScript, and PageMaker are trademarks of Adobe Systems Incorporated. Apple, AppleShare, AppleTalk, iMac, ImageWriter, LaserWriter, Mac OS, Power Macintosh, and TrueType are registered trademarks of Apple Computer, Inc. Macintosh is a trademark of Apple Computer, Inc., registered in the U.S.A. and other countries. PANTONE, Hexachrome, PANTONE Goe, PANTONE Hexachrome, and PANTONE MATCHING SYSTEM are the property of Pantone, Inc. PEARL, PEARLsetter, PEARLhdp, PEARLdry, and PEARLgold are registered trademarks of Presstek, Inc. Technical data subject to change without notice.