



Xerox 700 Digital Color Press with Integrated
Fiery® Color Server



Configuration and Setup

© 2008 Electronics for Imaging, Inc. The information in this publication is covered under [Legal Notices](#) for this product.

45072719
21 April 2008

CONTENTS

INTRODUCTION	7
Terminology and conventions	7
About this document	8
CONNECTING TO THE NETWORK	9
Integrated Fiery Color Server on the network	9
Stages of installation on the network	10
Summary of Integrated Fiery Color Server network installation	11
Network server setup requirements	12
Windows networks	12
AppleTalk networks	12
UNIX networks	13
PREPARING FOR FIERY CONTROLLER SETUP	14
Levels of access and control	14
Users and Groups	14
Integrated Fiery Color Server print connections	16
WebTools	18
Additional security features	18
Controlling E-mail access to the Integrated Fiery Color Server	19
Restricting IP addresses and ports, and MAC addresses	19
LDAP authentication	19
Connecting network cable to the Integrated Fiery Color Server	19
Back view of the Integrated Fiery Color Server	20
Ethernet connection	20

About Setup	21
Setup from the digital press control panel	21
Setup from a network computer	21

SETTING UP THE INTEGRATED FIERY COLOR SERVER FROM THE DIGITAL PRESS CONTROL PANEL

Integrated Fiery Color Server Setup from the digital press control panel	22
---	----

Accessing Setup options	23
About the digital press control panel Setup interface	24
Types of Setup screens	25
Saving changes	25

Menu tabs	26
Main tab	26
Info tab	27
Scan tab	27
Calibrate tab	28
Setup tab	28

Printer Setup options	29
General Setup	29
Enable Queues	30
PostScript/PCL Setup	31
VDP Setup	32
Native Document Setup	32
Job Log Setup	32

Network Setup options	34
Port Setup	34
TCP/IP Setup	36
802.1x Authentication Setup	42
AppleTalk Setup	43

Services options	43
SMB (Windows Setup), LPD, and Web Setup	43
Port 9100 and FTP Setup	44
LDAP Setup	45
SNMP Setup	47
Scan Setup	49
E-mail Setup	50
SLP Setup	52
 SETTING UP THE FIERY CONTROLLER FROM A NETWORK COMPUTER	 53
Accessing Configure from a network computer	53
 SETUP OPTION REFERENCE	 54
Setup options	54
 CONFIGURING WEBTOOLS	 57
Configuring the Integrated Fiery Color Server and computers for WebTools	57
 ADMINISTERING THE FIERY CONTROLLER	 58
Administrator functions	58
Setting passwords	59
Passwords from the digital press control panel	59
Passwords from a network computer	60
Updating system software	60
Clearing the Integrated Fiery Color Server	60
Remote connection to the Integrated Fiery Color Server	61
Restoring Integrated Fiery Color Server settings	62
Restoring the Integrated Fiery Color Server to default settings	62
Saving and restoring Integrated Fiery Color Server configuration	62
USB printing	63
Managing e-mail address books	64

VDP Search Path	67
Setting common global search paths	67
Allowing users to define a search path for a single job	68
Printing the Configuration page	69
Maintaining optimal Integrated Fiery Color Server performance	70
Shutting down, rebooting, and restarting the Integrated Fiery Color Server	71
Shutting down the Integrated Fiery Color Server	71
Rebooting or restarting the Integrated Fiery Color Server	71
TROUBLESHOOTING	72
Troubleshooting the Integrated Fiery Color Server	72
Runtime error messages	72
Cannot connect to the Integrated Fiery Color Server with utilities	73
Cannot connect to the Integrated Fiery Color Server with Command WorkStation	74
INDEX	75

INTRODUCTION

This document describes how to set up network servers and user computers to use the Xerox 700 Digital Color Press with Integrated Fiery Color Server so that users can print to it as a high-performance networked printer. For general information about using the digital press, your computer, your software, or your network, see the documentation that accompanies those products.







Setting up the network environment correctly requires the presence and active cooperation of the network administrator. Detailed instructions for configuring networks is beyond the scope of this document. For information, see your network documentation.



For information about supported operating systems and system requirements, see [Welcome](#).

Terminology and conventions

This document uses the following terminology and conventions.

Term or convention	Refers to
Aero	Integrated Fiery Color Server (in illustrations and examples)
Digital press	Xerox 700 Digital Color Press
Integrated Fiery Color Server	Xerox 700 Digital Color Press with Integrated Fiery Color Server
Mac OS	Apple Mac OS X
Titles in <i>italics</i>	Other documents in this set
Windows	Microsoft Windows 2000, Windows XP, Windows Server 2003, Windows Vista
	Topics for which additional information is available by starting Help in the software
	Tips and information
	Important information
	Important information about issues that can result in physical harm to you or others

About this document

This document covers the following topics:

- Network connectors on the Integrated Fiery Color Server
- Information specific to the Integrated Fiery Color Server about setting up network servers

NOTE: For information about network servers, see your network documentation.

- System security through access levels and passwords
- Setup of the Integrated Fiery Color Server from the digital press control panel
- Setup of the Integrated Fiery Color Server from a network computer
- Setup of the Integrated Fiery Color Server to allow users to use WebTools
- Administration of the Integrated Fiery Color Server
- Troubleshooting

Administrator functions described in other documentation are summarized on [page 58](#).

CONNECTING TO THE NETWORK

This chapter summarizes the stages in setting up the Integrated Fiery Color Server.

Integrated Fiery Color Server on the network

When the Integrated Fiery Color Server is connected to a network, it behaves as a networked printer. The Integrated Fiery Color Server supports the following network protocols (rules that enable computers on a network to communicate with each other):

- AppleTalk, Bonjour
- TCP/IP, which also includes the BOOTP, DHCP, FTP, HTTP, IMAP, IPP, IPv4, IPv6, LDAP, LPD, NBT, POP3, Port 9100, SMB, SMTP, SNMP, SNMP, and SSL/TLS protocols

These protocols can run concurrently on the same cable. Computers that use other protocols can print through a server that uses one of the supported protocols. The Integrated Fiery Color Server is auto-sensing, and handles all connections simultaneously.

Stages of installation on the network

Installation can be performed by a network or printing administrator. The stages of a successful installation are:

1 Configuring the network environment

Configure network servers to provide users with access to the Integrated Fiery Color Server as a networked printer. For information about configuring network servers in Windows and UNIX network environments as they relate specifically to the Integrated Fiery Color Server, see [page 12](#). For information about using your network, see your network documentation.

2 Physically connecting the Integrated Fiery Color Server to a functioning network

Prepare a network node for the Integrated Fiery Color Server. Obtain cable, route it to the location where the Integrated Fiery Color Server is to be installed, and attach the cable to the network connector of the Integrated Fiery Color Server. For details, see [page 19](#).

3 Setting up the Integrated Fiery Color Server

Configure the Integrated Fiery Color Server for your printing and network environment (see [page 22](#) and [page 53](#)).

4 Preparing user computers for printing

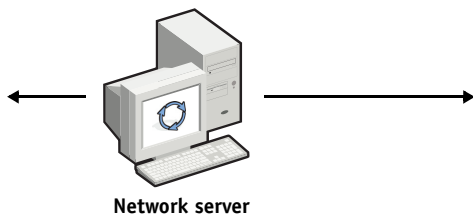
Install the files needed for printing, install user software, and connect the user computers to the network. The software installation is described in *Printing from Windows* and *Printing from Mac OS*.

5 Administering the Integrated Fiery Color Server

Monitor and maintain system performance and troubleshoot problems that may arise (see “[Administering the Fiery Controller](#)” on page 58).

Summary of Integrated Fiery Color Server network installation

Network server configuration



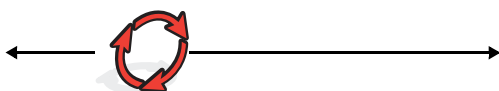
Configure network servers to specify Integrated Fiery Color Server print queues and Integrated Fiery Color Server users.

Connection



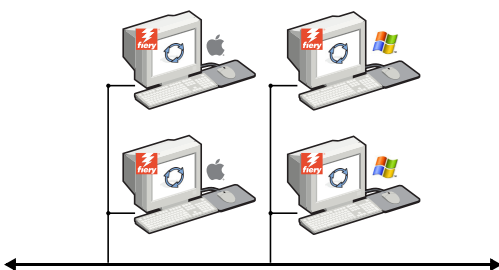
Prepare a network node. Connect the Integrated Fiery Color Server to the network.

Integrated Fiery Color Server Setup



Configure default settings for the options in the Setup menus.

Client computer Setup



At computers where users print to the Integrated Fiery Color Server:

- Install the appropriate printer files and connect to one or more print connections.
- Install utilities and an Internet browser on computers where users will use them.
- Verify the Integrated Fiery Color Server in the list of printers.

Integrated Fiery Color Server available on the network

Network server setup requirements

This section provides basic information about configuring the Integrated Fiery Color Server and using it on the network. It does not explain network functions for printing in general. Only information specific to the Integrated Fiery Color Server is presented. Setting up the network environment correctly requires the presence and active cooperation of the network administrator. Detailed instructions for configuring networks is beyond the scope of this document. For information, see your network documentation.

Configure the network and servers, and ensure that there is a live network connection *before* you configure Integrated Fiery Color Server network settings in Setup. This allows the Integrated Fiery Color Server to query the network for zones, servers, and server-based queues.

Whenever you change the configuration of the Integrated Fiery Color Server, digital press, or network at your site, alter the settings to correspond to the changed environment. Changing network or port settings may require that you make changes to other Setup options, as well.

Windows networks

- **The Integrated Fiery Color Server requires a valid IP address, subnet mask, and gateway address.**

Enter these addresses manually or use DHCP or BOOTP protocols to assign them dynamically. Make sure the Integrated Fiery Color Server name and address are listed in a domain name server (DNS) or hosts name database used by your system.

If more than one Integrated Fiery Color Server print connection is published (for example, if both the Print queue and the Hold queue are published), consider creating a printer for each print connection, so that users can print to each connection directly.

- **Configure the Integrated Fiery Color Server with the correct Windows domain name.**

This is especially important for Windows printing, also known as SMB printing.

To use Microsoft Active Directory, you must assign the Integrated Fiery Color Server to a domain. If you assign the Integrated Fiery Color Server to a workgroup, you cannot use Active Directory.

AppleTalk networks

AppleShare servers require no special configuration.

To allow Mac OS X computers to access Bonjour printers, you must enable Bonjour on the Integrated Fiery Color Server.

UNIX networks

- When you configure a UNIX workstation with the lpr protocol and connect to the Integrated Fiery Color Server over a TCP/IP network, you can print directly to the Integrated Fiery Color Server.
- Setting up UNIX workstations requires an administrator with root privileges. After the initial configuration, UNIX users submit print jobs to a named printer.
- The Integrated Fiery Color Server is a printer controller that understands lpr protocols.
- The Integrated Fiery Color Server has a remote printer name you must use in order to communicate with it successfully.

Regardless of the UNIX system you use, the name you use for the remote printer (or rp in the /etc/printcap file) in configuring the network for the Integrated Fiery Color Server must be one of the following:

print
hold
direct

Computers on a TCP/IP network can print directly to the Integrated Fiery Color Server as a remote printer, or can print to a Windows 2000/Server 2003 server or UNIX workstation acting as a print server.

PREPARING FOR FIERY CONTROLLER SETUP

To prepare for printing at your site, you must do some initial Integrated Fiery Color Server configuration (or “Setup”) to specify the network environment and the types of printing you do. Before you perform Setup, decide the levels of access to implement, such as passwords and other security features that the Integrated Fiery Color Server offers. Because many of these security features are interconnected, review the information in this chapter to plan for an effective security system, and then perform Setup accordingly.

Levels of access and control

When you configure the Integrated Fiery Color Server during Setup, you implement a particular level of control by configuring these elements:

- Users and Groups
- Print connections
- Access to WebTools

Users and Groups

With WebTools Configure, you create users, assign passwords to users, create groups with particular privileges, and assign users to the groups. Several groups are provided by default, and you can create new groups. All users in a group have the same privileges.

In addition to assigning the users that you have created to a group, you can add users from your organization’s global address list if you have LDAP services enabled on the Integrated Fiery Color Server.



The following discussion is an overview designed to help you prepare a security strategy. For more information, including specific procedures, see WebTools Configure Help.

User authentication

The term “user authentication” means the Integrated Fiery Color Server verifies that the user who is sending a job belongs to a group, and the group has printing privileges (“Print in B&W” or “Print in Color and B&W”).



By default, the Integrated Fiery Color Server does not enforce user authentication. That is, even if you assign passwords to users and assign the users to groups, no authentication occurs *unless* you clear the “Allow users to print without authentication” checkbox (in Configure > Users and Groups). If this option is selected, anyone can print to the Integrated Fiery Color Server.

If you require users to specify their user name and password (that is, you have cleared the “Allow users to print without authentication” checkbox), users must type this information in the printer driver when they print. Also, users must specify their user name and password if they create files from the printer driver for printing later (such as an e-mail attachment that will be sent to the Integrated Fiery Color Server).

Because jobs that are sent through FTP do not require a printer driver, you can specify that FTP jobs are authenticated (see Configure > Network > Services > FTP > Require Password for Printing).

The Mac OS X printer driver does not support cross-network authentication, such as domain\LDAP user. Only local Integrated Fiery Color Server users are supported. The Mac OS X printer driver automatically populates the user name field with the operating system login (which the user can edit). By default, the Mac OS X printer driver requires the user name “admin” with no password.

Passwords

When you create a new user in WebTools Configure > Users and Groups, you assign a password to the user. In other areas of the system, you can also set passwords for these areas:

- Default admin user in Administrators group
- Default operator user in Operators group



By default, the Administrator password is set on the Integrated Fiery Color Server. Change the Administrator password periodically to protect the Integrated Fiery Color Server from accidental or malicious changes to Setup. For more information, see [“Setting passwords”](#) on page 59.

Users in the Administrators and Operators groups have privileges in addition to the explicit ones that you set when you create groups. Examples of these privileges are provided in the following sections.

Administrator privileges

Users in the Administrators group have the highest level of control. Administrator privileges include:

- Configuring the Integrated Fiery Color Server from the Configure WebTool or from the digital press control panel
- Adding and deleting groups
- Adding and deleting users
- Setting and changing passwords for users
- Deleting, printing, exporting, and viewing the Job Log
- Deleting, viewing, and modifying users’ print jobs
- Clearing the Integrated Fiery Color Server of all job data

- Initiating scan jobs and saving them to any mailbox
- Printing in black-and-white or color
- Publishing print connections
- Deleting fonts
- Controlling print jobs from the job management tools
- Overriding job settings
- Setting default settings for print options
- Calibrating the Integrated Fiery Color Server

Operator privileges

Users in the Operators group control print jobs from the job management tools, including the following:

- Viewing the Job Log
- Deleting, viewing, and modifying other users' print jobs
- Printing in black-and-white or color

Guest privileges (no password)

A user does not need a password to log on as a Guest from the job management tools. A Guest can view the status of active jobs but cannot make changes to jobs or to the Integrated Fiery Color Server state.

Integrated Fiery Color Server print connections

The Integrated Fiery Color Server supports three print connections: Hold queue, Print queue, and Direct connection. You enable, or “publish,” these print connections to users on the network when you configure Printer Setup. All published connections are constantly checked for the presence of jobs. The Print queue and Direct connection give users more direct access to the Integrated Fiery Color Server than the Hold queue. Therefore, do not publish the Print queue and the Direct connection in environments where maximum control is required.

In addition, you can enable the Printed queue, which is a storage area for the most recent jobs from the Print queue. The Printed queue allows users to reprint those jobs by using the job management tools (for example, Command WorkStation).

NOTE: To use the utilities and WebTools, you must enable at least one print connection.

Hold queue

Jobs sent to the Hold queue are spooled to the Integrated Fiery Color Server hard disk for printing at a later time, or for reprinting. Because the Hold queue is a storage area, jobs sent to it cannot proceed through the printing process until the operator intervenes using the job management tools.

Print queue

The Print queue is the standard Integrated Fiery Color Server queue. Jobs sent to the Print queue are processed and printed in the order in which they are received. Jobs prioritized by an operator with the job management tools and jobs sent via the Direct connection take priority over jobs sent to the Print queue.

Direct connection

The Direct connection transmits jobs directly to the Integrated Fiery Color Server, but only when the Integrated Fiery Color Server is idle. If the Integrated Fiery Color Server is busy, the job remains at the user's computer until the Integrated Fiery Color Server is ready. The job is then processed as soon as the previous job is finished and before the next queued job is processed.

In most cases, jobs sent to the Direct connection are not stored on the Integrated Fiery Color Server hard disk, and cannot be selected for reprinting, moving, or deletion. Therefore, the Direct connection provides a measure of security for sensitive files. Jobs sent to the Direct connection *do* appear in the Job Log, for accounting purposes.



Some types of jobs printed to the Direct connection cause temporary files to be stored on the Integrated Fiery Color Server hard disk, but do not appear in any of the job management tools. These job types are the following:

- PDF jobs
- TIFF jobs
- Jobs with settings for any of these print options:
 - Reverse order printing (for large jobs)
 - Booklet Maker
 - Mixed Media
 - Combine Separations

NOTE: To download fonts to the Integrated Fiery Color Server, you must publish the Direct connection.

WebTools

The Integrated Fiery Color Server supports Internet or intranet access with WebTools from Windows and Mac OS computers. To enable use of WebTools, see [“Configuring WebTools” on page 57](#).

Home

Home provides you with current information about the jobs processing and printing on the Integrated Fiery Color Server. To use this WebTool, you do not need a password. For more information, see [Utilities](#).

Downloads

Downloads allows users to download installers for printer drivers and other software directly from the Integrated Fiery Color Server. To use this WebTool, you do not need a password. For more information, see [Printing from Windows](#), [Printing from Mac OS](#), and [Utilities](#).

Docs



Docs allows users to access, manage, and modify jobs in their mailboxes on the Integrated Fiery Color Server, and submit jobs to the Integrated Fiery Color Server. For more information, see WebTools Docs Help.

Scan Settings



Scan Settings allows you to define scan templates from a remote computer. These scan templates are accessible from the digital press when you scan a file. The administrator has full access to all scan templates. In addition, the administrator can create new scan templates in Scan Settings and can import and export scan templates. For general information about scanning, see [Utilities](#). For information about Scan Settings, see WebTools Scan Settings Help.

Configure

Configure allows you to view and modify Integrated Fiery Color Server options from a network computer. This function requires an Administrator password. For more information, see [page 53](#).

Additional security features

In addition to the traditional security features such as passwords, you can use these features to keep the Integrated Fiery Color Server secure:

- E-mail access
- IP addresses and ports, and MAC addresses
- LDAP authentication

Controlling E-mail access to the Integrated Fiery Color Server

Because you can allow users to print file attachments in e-mail messages sent to the Integrated Fiery Color Server, the Integrated Fiery Color Server accepts only valid attachments (for example, PostScript or PDF files). Typically, viruses transmitted via e-mail require execution by the receiver. Attachments that are not valid files are discarded by the Integrated Fiery Color Server.

Because file types such as .BAT, .VBS, and .EXE could launch harmful virus activity, the Integrated Fiery Color Server does not process these file types. The Integrated Fiery Color Server also ignores e-mails in RTF (Rich Text Format) or HTML (Hypertext Markup Language) format, and any included JavaScript code.

You can define lists of authorized e-mail addresses on the Integrated Fiery Color Server. Any e-mail that the Integrated Fiery Color Server receives from an e-mail address not in the authorized list is deleted. For more information, see [page 64](#).

Restricting IP addresses and ports, and MAC addresses

To restrict unauthorized connections to the Integrated Fiery Color Server, you can permit only users whose IP addresses or MAC addresses are within a defined range. You can also close unnecessary ports to reject inbound access from the network. Commands or jobs sent from unauthorized IP addresses or ports are ignored by the Integrated Fiery Color Server.

LDAP authentication



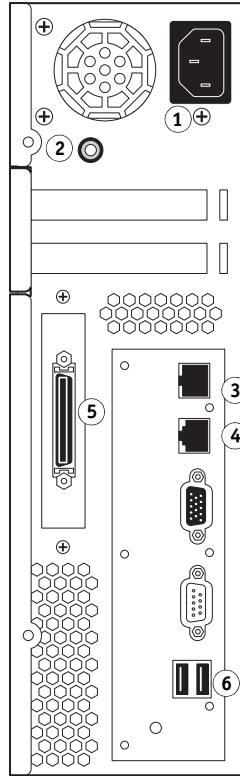
When you enable LDAP communication to retrieve names and other information for people at your organization, you can specify the type of authentication. For more information, see WebTools Configure Help.

Connecting network cable to the Integrated Fiery Color Server

This section includes an illustration of the Integrated Fiery Color Server back panel, and provides information about connecting the Integrated Fiery Color Server to the network.

Back view of the Integrated Fiery Color Server

- 1 Power connector
- 2 Power button
- 3 Scan crossover cable connector
- 4 Network connector
- 5 Digital press connector
- 6 USB connectors



Ethernet connection

For Ethernet connections, the Integrated Fiery Color Server supports Unshielded Twisted Pair (UTP) cabling for these network speeds:

- 10BaseT: Category 3 or higher
- 100BaseTX: Category 5 or higher (4-pair/8-wire, short-length)
- 1000BaseT: Category 5e or higher (4-pair/8-wire, short-length)

TO CONNECT TO THE NETWORK

- 1 **Power off the digital press and Integrated Fiery Color Server.**

For information about the proper procedures, see [page 71](#).

- 2 **Connect the scan crossover cable from the Integrated Fiery Color Server to the scan port on the digital press.**
- 3 **Connect the network cable from the network to the appropriate network connector (RJ-45) on the back of the Integrated Fiery Color Server.**
- 4 **Power on the Integrated Fiery Color Server and the digital press.**

About Setup

Setup configures the Integrated Fiery Color Server to communicate with other devices and to manage print jobs. Perform Setup the first time you turn on the Integrated Fiery Color Server after new system software is loaded, or any time Server software is reinstalled. When the network or user printing environment changes, change the options accordingly.

NOTE: You cannot access Setup functions from Command WorkStation, Macintosh Edition.

Setup from the digital press control panel

Make settings for Printer Setup, Network Setup, and Services, in that sequence. After the initial Setup, you can change Setup options from the digital press control panel ([page 23](#)) or a network computer ([page 53](#)). Most Setup options can be set using either of these methods.

If you do not make settings in the remaining Setup menus, the Integrated Fiery Color Server uses default settings. You must choose settings appropriate for the printing environment at your site.

Setup from a network computer

To set up the Integrated Fiery Color Server from a network computer, use Configure ([page 53](#)). Access Configure either from WebTools or Command WorkStation, Windows Edition.

SETTING UP THE INTEGRATED FIERY COLOR SERVER FROM THE DIGITAL PRESS CONTROL PANEL

Setup is recommended the first time the Integrated Fiery Color Server is turned on after new system software is installed. If you do not configure a particular Setup option, the Integrated Fiery Color Server uses default settings. Make sure that the settings are appropriate for the printing environment at your site.

Integrated Fiery Color Server Setup from the digital press control panel

Setup allows you to configure the Integrated Fiery Color Server to communicate with other devices and manage print jobs sent to it.

Setup provides these groups of options:

- Printer Setup to specify system settings, manage print jobs and queues, and set default settings for PostScript and PCL settings
- Network Setup to specify active network systems that transmit print jobs to the Integrated Fiery Color Server
- Services to enable network services such as E-mail printing and Windows printing (SMB)

The remaining commands in the main Setup screen are administration topics.
For information, see [page 58](#).

Accessing Setup options

When you access Setup options, make sure that no one is printing to the Integrated Fiery Color Server.

TO ACCESS SETUP WHEN THE INTEGRATED FIERY COLOR SERVER IS IDLE

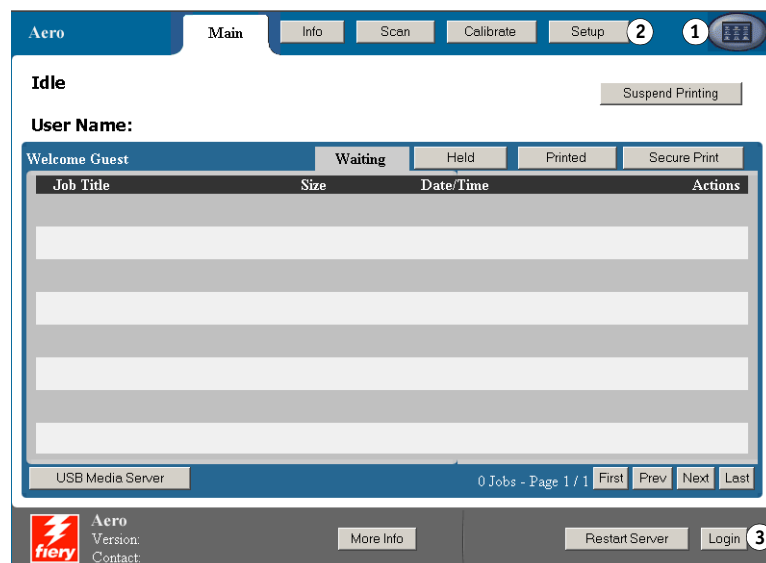
- 1 At the digital press, press the Services button.

- 1 Services button



- 2 On the digital press control panel, press the All Services button, and then press the Web Applications button.

- 1 All Services button
- 2 Tab to access Setup Menu
- 3 Login/Logout button



3 Make sure that the Integrated Fiery Color Server is Idle.

In the upper-left corner of the Main tab, make sure that Idle is displayed. If Printing or RIPPING appears, the Integrated Fiery Color Server is processing, and you must wait until the system finishes and reaches the Idle state.

4 Press the Setup tab.**5 Press the Password field and use the keyboard on the digital press control panel to type the Administrator password.****6 Press Save and then press Login.****7 Press the button for the Setup you want to access.****8 Perform Printer Setup, Network Setup, and Services, in that order.**

Descriptions of Setup options begin on [page 29](#).

9 Change the Administrator password to protect your Setup from unauthorized changes.

For information, see [page 59](#).

About the digital press control panel Setup interface

When you perform Setup from the digital press control panel, you can select one menu after another and enter information about your Integrated Fiery Color Server and your network and printing environment.

When you perform a function from the digital press control panel that prompts you for the Administrator password, you must enter it promptly. Otherwise, the digital press control panel returns to Idle, and you must start over.

Some of the menus you see are shown on the Control Panel Map, a high-level guide to Setup that you can print from the digital press control panel.

TO PRINT THE CONTROL PANEL MAP

- 1 At the digital press, press the Services button.**
- 2 On the digital press control panel press All Services, and then press Web Applications.**
- 3 Press Info.**
- 4 Press Control Panel Map.**
- 5 At the confirmation screen, press Yes.**

Types of Setup screens

There are different types of Setup options:

Multiple choice questions	You are given choices in a list. Press the arrow next to the list and choose the setting.
Binary questions	These options enable or disable a feature. Press the checkbox next to the option to enable it. Press it again to disable it.
Information entry options	You must specify the information for your site (the printer name or IP address, for example). Use the keyboard provided on the digital press control panel to enter information.

Saving changes

When you have finished making settings for the options, press Save. If the number of options or settings occupies more than one screen, press the Save & Continue button. These buttons are at the bottom-right of the Setup screen.

In order for the changes to take effect, you must reboot the Integrated Fiery Color Server. For information, see [page 71](#).

The digital press control panel allows you to view status information about jobs printed to the Integrated Fiery Color Server, print system pages, and set up printing.

Menu tabs

In addition to performing Setup, you can use the digital press control panel to view status information about jobs printed to the Integrated Fiery Color Server, print system pages, and set up printing.

The menu provides many of the same options available from Command WorkStation. For information about the job management features (for example, working with jobs in the Waiting area), see [Utilities](#).

Main tab

The Main tab displays properties of currently printing and queued jobs, and allows you to print jobs. From Main you can also access the following commands:

- | | |
|------------------|--|
| Suspend Printing | Suspend communication between the Integrated Fiery Color Server and the digital press. Use this command if you want to interrupt the current job so that you can perform maintenance tasks. Jobs continue to process on the Integrated Fiery Color Server. After you complete the maintenance tasks, choose Resume Printing to continue printing jobs from the Integrated Fiery Color Server. |
| Resume Printing | Resume communication between the digital press and the Integrated Fiery Color Server after you have selected Suspend Printing. |
| Secure Print | Allows users to control Secure Print jobs. To access Secure Print jobs, a password is required. The user defines and enters the password in the Secure Print option from the printer driver. For more information, see Print Options .

NOTE: Secure Print jobs are supported on Windows 2000/XP/Server 2003 and Mac OS X only, and are not accessible from the job management tools. |
| Cancel | Cancels the processing of a job. |
| USB Media Server | Print a file from a USB device to one of the published print connections. For more information about printing, see Printing from Windows and Printing from Mac OS . |

Info tab

The Info tab displays options that are installed on the Integrated Fiery Color Server. You can also print system pages and activity logs.

Print Pages

Print system pages from the Integrated Fiery Color Server. You can print the following pages:

PS Test Page/PCL Test Page: A Test Page allows you to confirm that the Integrated Fiery Color Server is properly connected to the digital press, and provides color and grayscale samples to troubleshoot problems with the digital press or the Integrated Fiery Color Server. Settings on the Test Page may include: Server Name, color settings, printer model, and date and time the Test Page was printed.

Configuration: Prints the Configuration page, which gives the current server and device configuration. This page lists general information about the hardware and software configuration of the Integrated Fiery Color Server, the current options for all Setup settings, information about the current calibration, and the IP address of the Integrated Fiery Color Server.

Color Charts: Prints samples of the RGB, CMY, and PANTONE colors available from the Integrated Fiery Color Server.

Control Panel Map: Prints the Control Panel Map, which is an overview of some of the screens you can access from the digital press control panel.

PS Font List/PCL Font List: Prints a list of all fonts currently on the Integrated Fiery Color Server hard disk.

Print Log

Print log files from the Integrated Fiery Color Server. You can print the following pages:

Job Log: Prints a log of the last 55 jobs.

E-mail Log: Prints a log listing recent e-mail activity. This E-mail log is useful to the network administrator.

FTP Log: Prints a log listing recent FTP activity. This FTP log is useful to the network administrator.

NOTE: To print the E-mail or FTP log, you must first enable the appropriate service. For E-mail Services, see [page 50](#). For FTP printing, see [page 44](#).

Scan tab

The Scan tab allows you to create job templates for scanning. For more information about using this function, see [Utilities](#).

Calibrate tab

Calibrate the Integrated Fiery Color Server using ColorCal. For more information, see [Color Printing](#). If an Administrator password has been set, you must enter it to access Calibration.

Setup tab

The Setup tab allows you to configure the Integrated Fiery Color Server so that it can be operational on your network. Other administrative commands, such as changing passwords and clearing the Integrated Fiery Color Server, are available. Descriptions for Setup options begin on [page 29](#).

You must enter the Administrator password to access the following submenus:

Printer Setup, Network Setup, Services	Configure the Integrated Fiery Color Server so that it can be operational on your network. You also set default print settings that are applied if jobs do not contain the appropriate information (for example, the color mode).
Change Password	Change the Administrator and Operator passwords. For more information, see page 59 .
Clear Server	Clear all jobs in all Integrated Fiery Color Server queues, as well as all jobs archived on the Integrated Fiery Color Server hard disk, the index of archived jobs (in the Archive window), all FreeForm masters, and the index of FreeForm masters (in the FreeForm window). Consult with your administrator or operator before choosing Clear Server.
Restart Server	Reset the system software without rebooting the entire system. Network access to the Integrated Fiery Color Server is temporarily interrupted and all currently processing jobs are aborted and may be lost.
Factory Defaults	Restore the Integrated Fiery Color Server to the default settings. For more information, see page 62 .

In addition, anyone can use the following commands without entering a password:

Align Tray	Adjust the placement of text and images on a page so that they are correctly aligned on the sheet of paper and both sides of a duplex sheet have the exact same alignment. For more information about this function, see Utilities .
Setup Summary	Display the current settings for Integrated Fiery Color Server Setup.
Run Diagnostics	These functions are reserved for service technicians.

Printer Setup options

Printer Setup lets you specify system information that pertains to the Integrated Fiery Color Server and users, as well as configure the connections and printing behavior associated with a particular printing device. To access the menu, follow the instructions on [page 23](#).

The submenus and options appear in sequence. Default values, where applicable, are underlined. Words shown in italics indicate that a product- or site-specific value is displayed.

General Setup

Server Name

Default server name

Enter a name for the Integrated Fiery Color Server (up to 15 characters long). This is the name by which the Integrated Fiery Color Server appears on the network. When you change the Server Name with this option, the new name is also applied to the Windows Printing Server Name ([page 39](#)).

NOTE: If you have more than one Integrated Fiery Color Server, do not give them the same name.

Use Character Set

Macintosh, DOS, Windows

Specify whether the digital press control panel and Command WorkStation should use the Macintosh, DOS, or Windows character set for displaying file names. This is important if file names include accented or composite characters (such as é or æ).

For mixed-platform networks, choose the setting that gives the best overall representation of the special characters you use.

Time Zone

List of zones

Select the appropriate time zone from a list of supported zones.

Enable SNTP

Select this option to use the time synchronization function of the digital press with an NTP/SNTP server through SNTP.

Time Server

List

Choose the server with which to synchronize the Integrated Fiery Color Server.

Print Start Page

Select this option to print a start page automatically from the Integrated Fiery Color Server every time it restarts. The start page displays information about the Integrated Fiery Color Server, including the server name, current date and time, amount of memory, network protocols, and print connections.

Preview While Processing

Select this option to display a preview thumbnail in Command WorkStation while a job is being processed. The preview thumbnail is displayed in the Processing section of the Activity Monitor.

Contact Info

Specify the contact information for people who provide support for the Integrated Fiery Color Server and digital press.

Enable Queues

To enable users to access the utilities and WebTools or print to the Integrated Fiery Color Server over a TCP/IP network, you must publish at least the Hold queue or the Print queue. Only the queues that you publish are available to users.

Publish Direct Connection

The Direct connection allows users to print (or download) jobs to the Integrated Fiery Color Server without spooling the jobs. Jobs sent to the Direct connection are not saved in the Printed queue.

If you plan to download fonts to the Integrated Fiery Color Server, you must publish the Direct connection.

Publish Print Queue

Jobs that are printed (or downloaded) to the Print queue are spooled to the Integrated Fiery Color Server hard disk and printed on a first-in, first-out basis.

Publish Hold Queue

Jobs that are printed (or downloaded) to the Hold queue can be printed only by copying or moving the jobs to the Print queue (for example, with Command WorkStation).

Enable Printed Queue

The Printed queue is a storage location on the Integrated Fiery Color Server hard disk for recent jobs that were printed from the Print queue. Users do not print to the Printed queue. However, users with Administrator or Operator access to the job management tools can reprint jobs from the Printed queue without resending them to the Integrated Fiery Color Server. If you do not enable the Printed queue, jobs are deleted from the Integrated Fiery Color Server hard disk immediately after they are printed.

Jobs Saved in Printed Queue

1-99, 10

If you have enabled the Printed queue, specify the number of jobs to store in the Printed queue. Jobs in the Printed queue take up space on the Integrated Fiery Color Server hard disk. If disk space is low, specify a smaller number of saved jobs.

Allow Printing From

All users, Authorized users

Specify whether the Integrated Fiery Color Server authenticates users before their jobs are sent to the Integrated Fiery Color Server. If you select Authorized users for this option, users must belong to a group to which you have assigned printing privileges.

Personality

Auto, PCL, PS

Choose the personality of the digital press. If you choose Auto, the page description language of incoming jobs is automatically detected and sent to the appropriate interpreter, PostScript or PCL.

If you choose a specific interpreter, incoming jobs are initially sent to that interpreter. If the job type does not match, the job is sent to the other interpreter.

Enable Job Mismatch

Select this option if you want the Integrated Fiery Color Server to take particular action if the job cannot print because of missing resources.

Mismatch Action

Suspend, Cancel

If you enabled Job Mismatch, choose the action for mismatched jobs. While a job is suspended, other jobs continue to process and print.

Mismatch Timeout

0-999

If you enabled Job Mismatch, specify how long (in seconds) the Integrated Fiery Color Server waits before it determines that a job is mismatched and therefore should be canceled.

PostScript/PCL Setup

These Setup menus allow you to set printing defaults for jobs sent to the Integrated Fiery Color Server. When a user prints a job from the printer driver, the user can make a specific setting for most print options on a job-by-job basis, and this setting is applied to the job. However, users who send jobs without a printer driver (for example, from UNIX or DOS command lines) cannot specify a setting and therefore must rely on the defaults that you set in Setup. For information about these defaults, see “[Setup options](#)” on page 54.

VDP Setup

For information about printing variable data documents with FreeForm, see [Variable Data Printing](#).

FreeForm 1 Record Length

Job, FreeForm Master

Choose the record length for FreeForm jobs. The Job setting defines the record boundary as the entire job. The FreeForm Master setting defines the record boundary as the length of the FreeForm master.

Native Document Setup

Native document conversion allows the automatic conversion and printing of Microsoft Office files (Word, Powerpoint, and Excel). When a user sends these file formats to the Integrated Fiery Color Server as either an e-mail attachment or through the USB Media Server feature, the Integrated Fiery Color Server sends them to the PrintMe server for conversion to PostScript files. The files are then printed on the Integrated Fiery Color Server.

Enable Native Document Conversion using PrintMe

When you select this option, the connection to the PrintMe server is initiated. You must enable DNS ([page 38](#)) to use this option.

Send licensing updates to the Fiery administrator e-mail address

If the PrintMe licensing updates change, an e-mail is sent to the administrator.

Job Log Setup

The Job Log is a record of all jobs processed or printed on the Integrated Fiery Color Server, whether they originate from a user computer, a network server, or the Integrated Fiery Color Server. You can print the Job Log from the digital press control panel or from the job management tools.

The printed Job Log lists accounting information about each job, including user name, document name, time and date printed, and number of pages. Windows and Mac OS users can enter job-specific notes that appear in the Job Log.

Auto Print Job Log Every 55 Jobs

Select this option to print the Job Log after every 55 jobs. Setting the Job Log for automatic printing is useful if accounting for each printed page is important at your site.

Auto Clear Job Log Every 55 Jobs

Select this option to clear the Job Log after every 55 jobs. If you do not select this option, and do not clear the Job Log from the Integrated Fiery Color Server or from a remote computer, the Integrated Fiery Color Server saves a record of all jobs.

NOTE: Selecting this option has no effect if you have not selected Auto Print Job Log Every 55 Jobs.

Page Size

11x17/A3, Letter/A4

Choose the paper size for printing the Job Log. Regardless of page size, 55 jobs are listed on a page. The paper size used depends on the Default Paper Sizes setting in PS Setup. If the Default Paper Sizes setting is US, the Job Log is printed on 11x17 or Letter size paper.

Require Password to Print Job Log

Select this option to require the Administrator password before printing or deleting the Job Log.

Network Setup options

When you perform Network Setup, you configure the Integrated Fiery Color Server to receive jobs over the network systems that are used at your site, including setting network addresses and names to be used by computers, servers, and the Integrated Fiery Color Server when they communicate with each other. To access the Setup menu, follow the instructions on [page 23](#).

Before performing Network Setup, confirm that the Integrated Fiery Color Server is connected to an active network because the Integrated Fiery Color Server queries the network for zones, servers, and server-based queues. If you perform Network Setup without a connected and functioning network, default settings are used that may not meet your needs.

Configure options only for the network systems that are currently used at your site. If your network requirements change, you can change Network Setup at any time. If the Integrated Fiery Color Server is configured to enable more than one protocol, it automatically switches to the correct protocol when it receives a print job.

Because Network Setup menus are nested, the names of higher-level menus are shown in this chapter to the left of each menu heading. Default settings for options, where applicable, are underlined.

Port Setup

Network Setup
Port



Enter the settings for the Ethernet and USB ports, and for whether to restrict access from MAC addresses.

Ethernet Speed

Auto, 10 Mbps Half-Duplex, 100 Mbps Half-Duplex, 10 Mbps Full-Duplex, 100 Mbps Full-Duplex

Choose the appropriate speed of the network. Choose Auto in any of these cases:

- The network speed is unknown.
- The network environment is mixed.
- The network uses 1Gbps.

MAC Address Filtering

Select this option to allow the Integrated Fiery Color Server to permit inbound packets from the specified MAC addresses. To enter specific addresses, use WebTools Configure, where you specify the MAC addresses from which to allow inbound packets. Any inbound packets sent from an unregistered MAC address are rejected. To allow unlimited access to the Integrated Fiery Color Server based on MAC address, clear the MAC Address Filtering option.

For information about permitting or denying access to IP ports and connections based on IP addresses, see [page 40](#).

Enable USB Port

Select this option to print to the USB port on the Integrated Fiery Color Server from a Windows computer or USB device.

Ignore EOF Character

This option specifies that the Integrated Fiery Color Server ignores end-of-file (EOF) messages in a file. Under normal circumstances, clear this option. To print PostScript files in binary format (not ASCII), select this option, and the Integrated Fiery Color Server uses the USB port timeout value to determine when the end of the file has been reached. If you experience printing problems, clear this option.

Port Timeout in Seconds

5–60, 30

Specify how long (in seconds) the Integrated Fiery Color Server waits without receiving data from the USB port before deciding that the current job is complete. Until the timeout, the Integrated Fiery Color Server cannot receive new jobs through the USB port, but it can continue to receive jobs over the network.

USB Connection

Print Queue, Hold Queue, Direct Connection, *virtual printers*

Choose where jobs printed to the USB port are sent. Only the print connections that you published are displayed.

This option appears only if you enabled the USB Port option. If only one of the print connections is published, USB jobs are automatically printed to that connection.

USB Media Auto Print

Select whether to enable automatic printing of jobs from a USB device. Jobs are printed as soon as the USB device is connected to the Integrated Fiery Color Server. For more information, see [page 63](#).

TCP/IP Setup

To configure the Integrated Fiery Color Server, choose each protocol and enter the settings for that protocol. You can enable AppleTalk and TCP/IP communication simultaneously.

Ethernet Setup

Network Setup

TCP/IP

Ethernet



When you set an IP address, subnet mask, or gateway address for the Integrated Fiery Color Server during Setup, you can allow the Integrated Fiery Color Server to get these addresses automatically from a DHCP or BOOTP server. First, turn on or restart the Integrated Fiery Color Server and allow it to reach Idle. Make sure the DHCP or BOOTP server is running, and then perform Network Setup.

IPv4 Address Type

Automatic, Manual

Choose whether to allow the Integrated Fiery Color Server to obtain its Ethernet IP address automatically by searching the network. Depending on your network and the protocol you select in the following option (DHCP or BOOTP), the IP address can change.

Depending on your selection, configure the appropriate options, as follows:

If you choose Automatic

Protocol

DHCP, BOOTP

Choose the protocol over which the Integrated Fiery Color Server searches for its IP address. Both DHCP and BOOTP allow the Integrated Fiery Color Server to obtain the Ethernet IP address and subnet mask automatically.

NOTE: Depending on your network, the Integrated Fiery Color Server might be assigned a different address after you restart the Integrated Fiery Color Server. With the DHCP setting, the Integrated Fiery Color Server can be assigned a different address even if it is not restarted. Make sure the network is already configured properly for the protocol you select.

Gateway Type

Automatic, Manual

Choose the method for obtaining the gateway address for printing with TCP/IP.

Gateway Address

127.0.0.1

If you answered Manual to the previous option, set the gateway address for printing with TCP/IP on your network.

If you choose Manual

IP Address

127.0.0.1

Enter the Integrated Fiery Color Server IP address for Ethernet. This IP address, unlike an IP address set automatically, remains the same if you restart the Integrated Fiery Color Server. You must change the default to a valid address for your network. For information about setting up printing with TCP/IP, see [page 12](#).

Subnet Mask

255.255.255.0

Set the subnet mask for printing with TCP/IP on your network.

NOTE: Confirm the subnet mask setting with your network administrator before proceeding.

Gateway Address

127.0.0.1

Set the gateway address for printing with TCP/IP on your network.

Enable IPv6

Select this option to allow the Integrated Fiery Color Server to retrieve an IPv6 address from the network.

Network Setup	▶
TCP/IP	▶
DNS	▶

DNS Setup

You can configure the Integrated Fiery Color Server so that it can access an appropriate DNS server. With the DNS server, when connecting the utilities or WebTools from remote computers to the Integrated Fiery Color Server, users need to remember only its Server Name, which is easier to remember than an IP address.

Enable DNS

Select this option if you have a DNS server connected to your network and if you want to allow the Integrated Fiery Color Server to resolve a name to an IP address.

DNS Address
Automatic, Manual

Choose whether to allow the Integrated Fiery Color Server to get its DNS address automatically. To use this option, you must first select Automatic for IPv4 Address type (page 36).

Depending on your selection, configure the appropriate options, as follows:

If you choose Automatic for DNS Address	If you choose Manual for DNS Address
Domain Name Enter the DNS domain name of the Integrated Fiery Color Server.	Primary DNS <u>127.0.0.1</u> Specify the IP address of the primary DNS server.
	Secondary DNS <u>0.0.0.0</u> Specify the IP address of the secondary DNS server.
	Domain Name Enter the DNS domain name of the Integrated Fiery Color Server.

NOTE: When you change Domain Name, the Server Name (page 29) and Windows Printing Server Name (page 39) change also.

Network Setup
TCP/IP
WINS Server



WINS Server Setup

For setting up the Windows printing service, these characters are allowed in the text fields: uppercase letters, numerals, space, and the following characters:

- _ . ~ ! @ # \$ % ^ & () { } \ ' ,

Enable WINS

Select this option if your network uses a WINS Server.

Server Name

Default Name

The server name is the name that appears on the network for accessing the Integrated Fiery Color Server via SMB. The default name is the same as the server name assigned in Printer Setup (see [page 29](#)).

Use Automatic Configuration

To use this option, you must first enable Auto IP Configuration for automatically obtaining the IP address of the Integrated Fiery Color Server (see [page 36](#)). Select this option if the Integrated Fiery Color Server uses a WINS name server and automatically obtains its IP address.

IP Address

If you do not enable Use Automatic Configuration, enter the correct IP address for the WINS Name Server. Obtain the correct address from your network administrator.

Workgroup or Domain

Enter the name of the workgroup or domain. For more information about entering text and characters, see [“Types of Setup screens”](#) on page 25.

Server Comments

Server comments (optional) can contain information about the printer. These comments are listed in the Integrated Fiery Color Server Properties in Network Neighborhood.

Network Setup
TCP/IP
Security

Security Setup

To help secure the environment for the Integrated Fiery Color Server, you can control access to the following items:

- IP ports
- IP addresses

NOTE: Because there are several screens for these options, press the Save & Continue button to set up the subsequent options.

IP Port filtering

Close unnecessary ports to help reject inbound access from the network. All ports not listed in the following table are closed.

Enable Ports

Select this option to improve security for your system, and then select the port numbers in the following options.

Port number	Corresponding protocol	Example of protocol usage
20-21	FTP	FTP printing, scan to FTP
80	HTTP	WebTools and IPP printing
123	SNTP	Communication with a time server
137-139	NetBIOS	SMB printing
161-162	SNMP	Command WorkStation
427	SLP	
443	SSL	
445	SMB/IP	
500	IPsec	
515	LPD	WebTools and LPD printing over Windows
631	IPP	IPP Printing over Windows
4500	IPsec	
5353	Multicast DNS	

Port number	Corresponding protocol	Example of protocol usage
EFI Ports (Ports 8021-8022 and 9906)		Command WorkStation and the printer driver Two-Way Communication feature
9100-9103		Port 9100 printing over Windows 2000/Server 2003

IP Address filtering

Set controlled access to the Integrated Fiery Color Server by specifying IP addresses or a range of IP addresses that the Integrated Fiery Color Server permits or rejects. This prevents unlimited access to the Integrated Fiery Color Server over your network and ensures network security in your environment.

NOTE: IP addresses 0.0.0.0 and 255.255.255.255 are not valid addresses.

Enable IP Filter

Select this option to enable IP filtering on the Integrated Fiery Color Server.

Filter Policy

Accept, Deny

Choose Accept to accept IP addresses other than the IP addresses you specify at this Setup.
Choose Deny to reject IP addresses other than the IP addresses you specify at this Setup.

Add Filter

Filter list

The number of available entries in the Filter list is displayed. Specify the IP Address/IP Range.

Edit Filter

Filter list

Select to make changes to IP addresses from the list, either individually or by range.

Delete Filter

Filter list

Select to delete IP addresses from the list individually or by range.

Network Setup
TCP/IP
IPsec



IPsec (Internet Protocol Security) Setup

If users' computers support IPsec, you can enable the Integrated Fiery Color Server to accept encrypted communications from users.

Enable IPsec

Select this option to enable IPsec on the Integrated Fiery Color Server.

Preshared key

If you previously defined a preshared key, enter it here. All incoming communication that uses IPsec must contain this key.

802.1x Authentication Setup

The Integrated Fiery Color Server can seek authentication from an 802.1x authentication server (such as a RADIUS server), often through an intermediate access point (an authenticator). The Integrated Fiery Color Server seeks this authentication at startup time, or when the Ethernet cable is disconnected and reconnected. If the Integrated Fiery Color Server is successfully authenticated, it is allowed access to the network.

Enable IEEE 802.1x Authentication

Select this option to allow the Integrated Fiery Color Server to seek authentication from an 802.1x authentication server.

EAP Type

PEAP-MSCHAPv2, MD5-Challenge

Choose the type of EAP (Extensible Authentication Protocol).

User name, password

This information is what the Integrated Fiery Color Server uses to request authentication from an 802.1x authentication server.

Validate Server Certificate

Select this option if you chose PEAP-MSCHAPv2 as the EAP type and want the Integrated Fiery Color Server to use a trusted root certificate when communicating with the authentication server.

If you want the Integrated Fiery Color Server to validate the server certificate, place the certificate in the list of trusted certificates of the Integrated Fiery Color Server. For more information, see WebTools Configure Help.

AppleTalk Setup

Network Setup
AppleTalk



Enable AppleTalk

Select this option if you have an AppleTalk network connected to the Integrated Fiery Color Server. This setting enables the Integrated Fiery Color Server to communicate over AppleTalk networks.

AppleTalk Zone

List of zones

The Integrated Fiery Color Server searches the network for AppleTalk zones in your network segment. Select the AppleTalk zone in which you want the Integrated Fiery Color Server to appear. If your segment has only one zone, the Integrated Fiery Color Server is assigned to that zone automatically.

The message “No AppleTalk zone found” may mean your network has no zones, or the network cable is not connected.

Services options

With the Services menu, you can enable services such as LPD and FTP. To access the Setup menu, follow the instructions on [page 23](#).

SMB (Windows Setup), LPD, and Web Setup

Services
SMB, LPD & Web



Enable Windows Printing

Server Message Block (SMB), also known as Windows printing, is the file and printer sharing protocol built into Windows. Enabling SMB allows the Integrated Fiery Color Server to be listed on the network so that Windows clients can print to a particular print connection (Hold, Print, or Direct) on the Integrated Fiery Color Server without any other networking software. For information about setting up a Windows computer for Windows printing, see [Printing from Windows](#) and your Windows documentation. Windows printing runs via TCP/IP, so you must configure TCP/IP on the Integrated Fiery Color Server and on all computers that use Windows printing.

Set Driver Type

PS, PCL

Choose the type of printer driver to download to a Windows computer when a user installs a printer with the Point and Print method of installation.

Enable LPD

Select this option to allow LPD printing.

Default LPD Queue

Print Queue, Hold Queue, *virtual printers*

Choose the default connection for LPD printing if it is not set by the user.

Enable IPP

Select this option to enable printing with the Internet Printing Protocol (IPP). For information about setting up user computers to use IPP printing, see [Printing from Windows](#).

Port 9100 and FTP Setup

Services

Port 9100 & FTP

**Enable Port 9100**

Select this option to enable applications to open a TCP/IP socket to the Integrated Fiery Color Server at Port 9100 to download a print job.

Port 9100 Queue

Direct Connection, Print Queue, Hold Queue

Specify the Integrated Fiery Color Server print connection for downloading jobs to Port 9100. Only the print connections you have enabled ([page 30](#)) are available.

Enable FTP

Select this option to enable FTP printing on the Integrated Fiery Color Server.

NOTE: FTP printing is supported for Windows, Mac OS, UNIX, Linux and other operating systems supporting the FTP protocol. The Integrated Fiery Color Server serves as an FTP server in compliance with RFC959, although all the functionality described in RFC959 is not supported.

Require Password for Printing

Select this option to require a user password for FTP printing. After you have defined passwords for a user and assigned the user to at least one group, selecting this option requires the Integrated Fiery Color Server to verify that the user belongs to a group that has printing privileges and that the user name and password are valid.



For information about users and groups, see WebTools Configure Help.

Timeout (sec)

30-300

Specify the timeout. After you have finished making the selection, restart the Integrated Fiery Color Server for the settings to take effect. To confirm the settings, print a Configuration page.

Default FTP Queue

Print Queue, Hold Queue, *virtual printers*

Choose the default connection for printing jobs from FTP Printing if it is not set by the user.

LDAP Setup

Services
LDAP Setup



The Integrated Fiery Color Server supports the following for LDAP servers:

- Lotus Domino 5.0.6a or later
- Windows 2000/Server 2003 with Active Directory service loaded

Enable LDAP

Select this option if you want to use an LDAP server.

Server

Type the name or IP address of the LDAP server that you want to use.

Port

1-65535, 389

Specify the port number for LDAP communication.

Secure Communication

Select this option to use secure communication with an LDAP server.

Secure ProtocolTLS, SSL

Choose the protocol for verifying authentication.

Timeout (sec)1-100, 60

Specify the maximum amount of time to elapse before the Integrated Fiery Color Server stops attempting to connect to the LDAP server.

Authentication required

Select this option if queries to your LDAP server require authentication.

AuthenticationAutomatic, Simple, GSSAPI

Depending on the setting, you enter the User Name, Password, and Domain for the authentication.

The Integrated Fiery Color Server supports the following authentication methods:

- Anonymous (for Lotus Domino, NetWare, and Windows 2000/Server 2003 servers)
- Simple (for Lotus Domino and NetWare servers)
- GSSAPI (for Windows 2000/Server 2003 servers)

If you use GSSAPI, note the following:

- A DNS server that supports Reverse DNS Lookup must be present on your network.
- The LDAP server IP address and host name must be registered on the DNS server.
- The time difference between the LDAP server and the System Time of the Integrated Fiery Color Server must be 5 minutes or less.

For more information, ask your network administrator.

User Name

Type the user name for access to the LDAP server. This information is used if the authentication method is Simple or GSSAPI.

NOTE: Make sure that the LDAP account used in the Integrated Fiery Color Server LDAP configuration has sufficient privileges to access the LDAP attribute “samaccountname,” or “uid,” which stores the individual’s Windows login name. If the Integrated Fiery Color Server does not have this privilege, the Contact List in Users and Groups is unable to display a user’s Windows login name, in which case, the Contact List displays only the user’s full name without a user name, for example: John Doe (). When correct privileges are established, both the full name and user name display when the Integrated Fiery Color Server queries the LDAP server, for example: John Doe (jdoe).

Password

Type the password for access to the LDAP server. This information is used if the authentication method is Simple or GSSAPI. If you use GSSAPI authentication, the password is encrypted when it is sent across the network.

Domain name

Type the name of the domain in which the LDAP server exists. This information is used if the authentication method is GSSAPI.

Search Base

Type the search base to search an LDAP server. The Integrated Fiery Color Server searches the area of the directory specified by the search base.

Maximum Number of Results

0-65535, 10000

Specify the maximum number of results that the Integrated Fiery Color Server accepts from the LDAP server.

Validate

To verify the search base location, press Validate.

SNMP Setup

Services
SNMP

**Enable SNMP**

Select this option to enable SNMP communication over an IP connection.

Restore SNMP To Defaults

Select this option to restore the default SNMP settings.

Security Level

Minimum, Medium, Maximum

Choose the level of security provided by the Integrated Fiery Color Server:

- Minimum: corresponds to functionality in SNMP version 1.
- Medium: offers more security for SNMP version 3.
- Maximum: most secure setting for SNMP version 3.

The following table describes the access for the different security levels:

User	Access	Minimum	Medium	Maximum
SNMP v1	Read	Yes	Yes	No
	Write	Yes	No	No
SNMP v3 Unsecure	Read	Yes	Yes	No
	Write	No	No	No
SNMP v3 Secure	Read	Yes	Yes	Yes
	Write	Yes	Yes	Yes

NOTE: Some of the utilities require that you set the security level to Minimum in an SNMP v1 environment.

SNMP Read Community Name

public

Specify the SNMP Read Community Name. When it is changed, the new community name must be entered to read any information in WebTools Configure. A maximum of 32 ASCII characters, including spaces, can be used for the community name.

NOTE: A space at the beginning or end of the name is automatically deleted from the name entered. When an invalid character is entered or no name is specified, the default “public” is used for the Read Community name. A name consisting only of spaces is invalid.

SNMP Write Community Name

value

Specify the SNMP Write Community Name.

Unsecure User username

If you selected Minimum or Medium for Security Level, specify a user name for which authentication and encryption are not used.

Secure User username

Specify a user name for which authentication (and if necessary, encryption) is used.

Authentication Type

MD5, SHA

Specify the type of authentication.

Authentication Password

Enter the password for reading MIB values based on the secure user name.

Services
Scan



Privacy Type

DES, None

Select the type of encryption algorithm.

Privacy Password

Specify the privacy password.

Scan Setup

Clear Each Scan Job

1 day after scan, Manual, 1 week after scan

Choose how often to remove scanned data sent to a mailbox on the Integrated Fiery Color Server hard disk. If you select Manual, the scan data remains on the hard disk until it is specifically deleted, or until you clear all scan jobs.

Clear Each Scan Job Now

Press this button to clear all scan jobs.

Attachment Maximum Size

0–15000

Enter the maximum file size (in KB) that the Integrated Fiery Color Server can send as an attachment (for example, an attached scan file). If the file exceeds this maximum, the Integrated Fiery Color Server sends a message containing a link to where this file is saved on the Integrated Fiery Color Server.

Default File Format

PDF, TIFF, JPEG

Choose the default format for files attached to an e-mail.

Proxy Server options

If your FTP server uses a proxy server, enter the appropriate information in the following options.

Enable Proxy

Select this option to enable a proxy server for security purposes.

Proxy Server

Enter the IP address of the proxy server on your network.

Port

1-65535, 21

Enter the port number of the proxy server on your network. Users must enter this port number at the Integrated Fiery Color Server when they send jobs to a secure FTP site.

If users send a job with a different port number, they must enter the port number at the Integrated Fiery Color Server for sending the job.

User Name

Enter the user name for the proxy server.

Password

Enter the user password for the proxy server.

E-mail Setup

Services
E-mail

**Enable E-mail Services**

Select this option to enable the Integrated Fiery Color Server to use e-mail or Internet Fax as a means of communication for a variety of purposes including printing PostScript, PDF, or TIFF files or sending files through e-mail or Internet Fax. The Integrated Fiery Color Server serves as a messenger between the digital press and the e-mail recipient or Internet Fax recipient.

Enable Print via E-mail

Select this option to enable printing via e-mail, scanning through e-mail/Internet Fax, and printing the E-mail Log.

Queue

Print Queue, Hold Queue, *virtual printers*

Choose the default connection for printing jobs from E-mail Printing if it is not set by the user.

Server Type

POP3, IMAP

Choose the type of mail server.

Incoming Server

127.0.0.1

Enter the IP address or DNS name of the server (POP3/IMAP) on your network that handles incoming e-mail.

Outgoing Server127.0.0.1

Enter the IP address or DNS name of the server (SMTP) on your network that handles outgoing e-mail.

Mailbox Account Name*youraccount*

Enter the mailbox name specified on the mail server. The client mail service acknowledges e-mails sent to the Integrated Fiery Color Server E-mail Service using this account name.

This is the internal name your network recognizes, which is not necessarily the same as User Name. Use the following characters for the account name:

0-9 A-Z, ! # \$ % & ' * + - / = ? ^ _ { | } ~

Mailbox Account Password

Enter the password for the e-mail account.

Fiery E-mail Address*youremail@yourdomain.com*

Enter the full address of the Integrated Fiery Color Server e-mail account.

Timeout (sec)

30–300, 60

Enter the length of time, in seconds, the Integrated Fiery Color Server should try to connect to each e-mail server before determining that the connection is unsuccessful.

Polling Interval (sec)

5–3600, 15

Enter the interval, in seconds, at which the Integrated Fiery Color Server automatically checks for new e-mail.

Administrator E-mail Address*youremail@yourdomain.com*

Enter the full address of the Administrator e-mail account.

SLP Setup

Services
SLP



Enable SLP

Select this option to enable SLP (Service Location Protocol). This protocol allows the Integrated Fiery Color Server to find services over the network.

Scope Name

Enter the scope, or string, used for grouping services.

SETTING UP THE FIERY CONTROLLER FROM A NETWORK COMPUTER



After you perform initial Setup from the digital press control panel, you can change Setup options from a network computer using Configure. To use Configure from a network computer, you must know the Integrated Fiery Color Server Administrator password. For information about using Configure and setting options, see WebTools Configure Help.

Accessing Configure from a network computer

To set up the Integrated Fiery Color Server from a network computer, use Configure. You can access Configure in these ways:

- WebTools from a supported Internet browser
- Command WorkStation, Windows Edition

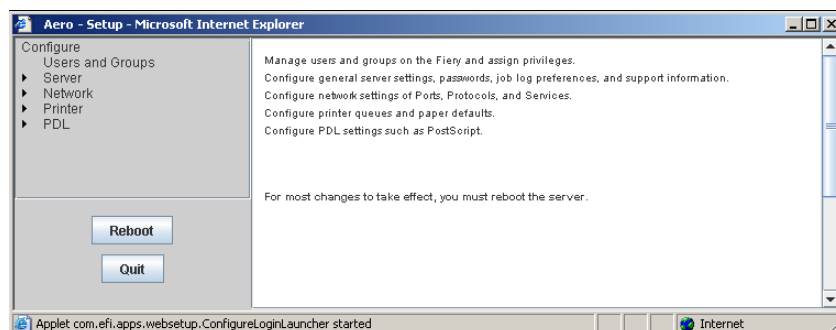
TO ACCESS CONFIGURE FROM AN INTERNET BROWSER

- 1 Start your Internet browser and type the IP address of the Integrated Fiery Color Server.
- 2 Click the Configure tab on the Integrated Fiery Color Server home page.
- 3 Click Launch Configure.
- 4 Log on as Administrator with the appropriate password.

TO ACCESS CONFIGURE FROM COMMAND WORKSTATION, WINDOWS EDITION

- 1 Start Command WorkStation.
- 2 Log on as Administrator with the appropriate password.
- 3 Choose Setup from the Server menu.

Regardless of the method you use, the following dialog box appears.



SETUP OPTION REFERENCE

This chapter describes the default settings that you can set for the following groups of Setup options:

- PS (PostScript) Setup
- PCL Setup

Depending on the Setup method that you use (WebTools Configure or digital press control panel), not all options are available. For more information about print options, see [Print Options](#).

Setup options

To determine the current Setup defaults, print the Configuration page from Command WorkStation.

Option	Settings (default is underlined)	Description
Allow Courier Substitution	<u>Yes</u> , No	Specify whether to substitute Courier for fonts that are unavailable when you download files to the Integrated Fiery Color Server, or when you print a document for which you do not have the corresponding printer font. If this option is set to No, jobs with fonts that are unavailable on the Integrated Fiery Color Server hard disk generate a PostScript error and do not print. This setting does not apply to PDF files; font substitution occurs automatically in PDF files.
Append CR to LF	<u>Yes</u> , No	Specify whether to append a carriage return to each line feed.
Auto Trapping	<u>On</u> , Off	
Color Mode	<u>CMYK</u> , Grayscale	Specify whether to print color (CMYK) or Grayscale images to the Integrated Fiery Color Server by default. CMYK gives you full color prints. Select CMYK as the Color Mode before performing calibration on the Integrated Fiery Color Server. Grayscale converts all colors into shades of gray.
Convert Paper Sizes	<u>No</u> , Letter/Tabloid->A4/A3, A4/A3->Letter/Tabloid	<p>Converts paper sizes in documents automatically to the default paper sizes specified. For example, if you select Letter/Tabloid->A4/A3, a letter size document is automatically printed on A4 paper.</p> <p>This option works in conjunction with the Default Paper Sizes option. For example, if Convert Paper Sizes is set to Letter/Tabloid->A4/A3, and Default Paper Sizes is set to US, jobs are printed A4/A3 size. This also includes Integrated Fiery Color Server system pages such as the Start Page, Test Page, and Job Log.</p>

Option	Settings (default is underlined)	Description
Cover Page	On, <u>Off</u>	Prints a cover page (job summary) containing the name of the user who sent the job, the document name, the server name, the time the job was printed, the number of pages printed, and the status of the job. If a PostScript error occurs and the Print to PS Error option is set to Yes, the cover page lists the PostScript error message instead of the job status.
Default Orientation	<u>Portrait</u> , Landscape	This PCL option determines whether the text or image will be oriented along the short edge of the paper (portrait) or along the long edge of the paper (landscape).
Face-Down Printing	<u>Face down</u> , Face up	Specify how output should exit the digital press.
Font Number	<u>0</u> -999	The font number designates the default font for the Integrated Fiery Color Server. To determine font numbers, print the internal PCL Font List. The standard fonts are listed in order. The font numbers, however, are not displayed.
Font Pitch (char/in)	0.44-99.99 (default is 10.00)	If the default PCL font selected in Font Number represents a fixed pitch scalable font, determine the width of scalable type. Pitch is measured by characters per inch, so 10-pitch type fits ten characters per inch.
Font Size (pt)	4.0-999.75 (default is 12.00)	If the default PCL font selected in Font Number represents a proportionally spaced scalable font, determine the point size (height) of the font.
Font Source	<u>Internal</u> , Soft Font	Specify the PCL font source to be enabled.
Form Length (lines)	5-128 (default is 60)	This option sets the number of lines to be printed per page in PCL jobs.
Image Quality	<u>Normal</u> , Best	
Offset Mode	On, <u>Off</u>	Specify whether to have jobs offset after they are printed. You must have a finisher installed.
Page Order	<u>Forward</u> , Reverse	Select Forward to print the pages of your job from first to last. Select Reverse to print the pages of your job from last to first.
Paper Size for System Pages	US, Metric (default is US in the United States, Metric elsewhere)	Specify the paper size that PCL system pages print on. System pages are pages that you print from the digital press control panel, such as the PCL Font List.
Print Master	Yes, <u>No</u>	Select Yes to print a FreeForm master when created and printed to the Integrated Fiery Color Server. The master is retained on the Integrated Fiery Color Server after printing unless deleted later. Select No only to process and hold a FreeForm master on the Integrated Fiery Color Server.
Print to PS Error	Yes, <u>No</u>	Specify whether the Integrated Fiery Color Server should print the available portion of a print job when it encounters a PostScript error. Select Yes to print the portion of the job that was processed before the error occurred; select No to cancel the print job entirely when a PostScript error is encountered. Leave this option at No unless you encounter printing problems.

Option	Settings (default is underlined)	Description
Printer Screen Mode	200 Cluster Dot, 200 Rotated Line, <u>Enhanced Text</u> , Enhanced Text & Graphics	
Scale to Fit	On, <u>Off</u>	Specify whether to scale a document size to a selected paper size if the document size is different from the paper size. With the Off setting, if the document size is larger than the selected paper size, the document is cropped to the paper size when printed.
Symbol Set	ASCII, <u>Roman_8</u> , ECMA-94 L1, PC_8...	Choose the PCL symbol set that best matches the needs of users printing to the Integrated Fiery Color Server.
Text/Graphics Edge Enhancement	On, <u>Off</u>	Specify whether to minimize the effects of “blasting,” which occurs when excess amounts of toner on certain media types “blast” beyond the density boundaries defined in the print job.
Text/Graphics Quality	<u>Normal</u> , Best	
Use PDF XObjects	On, <u>Off</u>	Specify whether images in PDF files are cached to reduce the need to reprocess the same image in a file.

CONFIGURING WEBTOOLS

WebTools allow you to manage your Integrated Fiery Color Server remotely from the Internet or from your company's intranet. The Integrated Fiery Color Server has its own home page, from which you can select the WebTool that you want to use.



For information about using WebTools, see [Utilities](#). Also, for many of the WebTools, you can consult the Help.

Configuring the Integrated Fiery Color Server and computers for WebTools

WebTools provide access to many Integrated Fiery Color Server functions via the Internet (or intranet), providing additional flexibility in remote management. After WebTools are enabled, you can access them from a network computer.

TO ENABLE ACCESS TO WEBTOOLS, ENABLE THE FOLLOWING ITEMS

- A valid, unique IP address, subnet mask, and gateway address for the Integrated Fiery Color Server
- Web Services

TO SET UP A COMPUTER TO ACCESS WEBTOOLS

- 1 Enable TCP/IP networking on the user computer.
- 2 Assign the computer a valid, unique IP address, subnet mask, and gateway address, if required.
- 3 Install an Internet browser that supports the Java language and frames.

Make sure Java is enabled. For more information about supported browsers and WebTools requirements, see [Welcome](#).

TO ACCESS WEBTOOLS

- 1 Start your Internet browser and type the IP address or DNS name of the Integrated Fiery Color Server.

The Integrated Fiery Color Server home page appears.

- 2 Click the tab corresponding to the WebTool that you want to use.

ADMINISTERING THE FIERY CONTROLLER

This chapter provides tips on managing Integrated Fiery Color Server printing, performance, and security.

Administrator functions

Administration features are included with the user software and are built into the Integrated Fiery Color Server. The following table describes where to find information about these features.

For this information	See
Address books for E-mail Printing	page 64
Administrator and Operator passwords	page 59
Clearing the Integrated Fiery Color Server	page 60
Configuration page	page 69
Connecting the Integrated Fiery Color Server to the network	page 19
Job Log Setup	page 32
Network servers, setting up to manage and share printing services	Documentation for your network servers
Network servers, setting up with information specific to the Integrated Fiery Color Server	page 9
Optimizing Integrated Fiery Color Server performance	page 70
Printer default settings	page 54 <i>Printing from Windows</i> <i>Printing from Mac OS</i>
Publishing the Direct connection, Print queue, or Hold queue to users	WebTools Configure Help
Remote Desktop connection	page 61
Saving and restoring Integrated Fiery Color Server configuration settings	page 62
Setting up printing, installing printer drivers, installing user software	<i>Printing from Windows</i> <i>Printing from Mac OS</i>
Shutting down, rebooting, and restarting the Integrated Fiery Color Server	page 71

For this information	See
System software updates	page 60
Troubleshooting Integrated Fiery Color Server Setup	page 72
USB printing	page 63
Variable data printing, setting search path for common objects	page 67
WebTools	page 57

Setting passwords

You can set or change the passwords for users of the Integrated Fiery Color Server. Anyone who is a member of the Administrators group can modify the Setup options and control the flow and order of print jobs with the job management tools.



To create users, assign passwords, and add users to groups, use Configure. For more information, see [WebTools Configure Help](#).

For more information about Administrator and Operator passwords and the access privileges they allow, see [page 15](#).



Keep track of the passwords that you set.

Passwords from the digital press control panel

To help prevent unauthorized access, change the Administrator password periodically.

TO CHANGE THE ADMINISTRATOR OR OPERATOR PASSWORD

- 1 On the digital press control panel, press **Setup**.
- 2 Log in as Administrator with the Administrator password.
- 3 Press **Change Password**.
- 4 Type and confirm the password, as follows.

Enter New Password

Use the digital press control panel window to enter information (see [“Types of Setup screens”](#) on page 25). The password can be any combination of letters and numbers up to 19 characters.

Verify New Password

Retype the new password, exactly as you typed it initially. The new password is in effect after you save changes and restart the Integrated Fiery Color Server.

Login Timeout

Select how long the current Administrator or Operator can stay logged in to the Integrated Fiery Color Server without activity. After the timeout expires, you must log in again.

Passwords from a network computer



You can change the Administrator and Operator passwords from WebTools Configure or Command WorkStation, Windows Edition. For more information, see Configure Help.

Updating system software

The Integrated Fiery Color Server uses unique system software to receive and process jobs and send job data to the digital press. Resident on the Integrated Fiery Color Server, system software processes and controls the spooling, rasterizing, and printing of jobs, as well as job accounting (the Job Log), storage, and retrieval.

You can check for system software updates from a secure site on the Internet. Updates to user software may also be available. Several methods of notification and installation are provided.



To check for software updates or to configure the Integrated Fiery Color Server to receive updates automatically, see WebTools Configure Help.

Clearing the Integrated Fiery Color Server

The Clear Server command allows you to clear all queued print jobs from the Integrated Fiery Color Server Print, Hold, and Printed queues. Jobs can also be deleted, either individually or as a group, using Command WorkStation. Clear Server also clears all jobs archived on the Integrated Fiery Color Server hard disk, the index of archived jobs, and all FreeForm masters.

TO CLEAR THE INTEGRATED FIERY COLOR SERVER

- 1 On the digital press control panel, press the Web Applications button.
- 2 Press Setup.
- 3 Log in as Administrator with the Administrator password.
- 4 Press Clear Server.

TO CLEAR THE INTEGRATED FIERY COLOR SERVER FROM COMMAND WORKSTATION

- In Command WorkStation, choose Clear Server from the Server menu.



For more information, see Command WorkStation Help.

Back up your original data on your own media at the same time you store and save data on the Integrated Fiery Color Server hard disk. Never damage or reset the Integrated Fiery Color Server hard disk, and do not turn off the system while accessing the hard disk. For instructions on how to turn on and turn off the Integrated Fiery Color Server, see [page 71](#).

If the Integrated Fiery Color Server hard disk or system software experiences technical difficulties, data stored and saved on the Integrated Fiery Color Server hard disk may be irretrievably lost. If problems with the hard disk occur, extended storage of the following data cannot be assured:

- Third-party fonts
- Print jobs
- Color profiles, including profiles downloaded or edited with Spot-On
- Job notes and instructions
- Scanned image data
- Jobs edited with Impose
- Variable data documents
- E-mail Service Address Book
- Integrated Fiery Color Server configuration information (list of all the settings in effect for the current Setup)

Remote connection to the Integrated Fiery Color Server

You can access the Integrated Fiery Color Server from a remote Windows computer.

TO CONNECT TO THE INTEGRATED FIERY COLOR SERVER FROM A REMOTE COMPUTER

- 1 Enable the Remote Desktop option in Setup.**
From Configure, choose Server > General > Enable Remote Desktop.
- 2 From the remote computer, choose Start > Programs > Accessories > Communications > Remote Desktop Connection.**
- 3 Type the IP address or DNS name of the Integrated Fiery Color Server and click Connect.**
- 4 Type the Administrator password, if prompted.**

Restoring Integrated Fiery Color Server settings

You can restore the Integrated Fiery Color Server to default settings or to a group of settings that you have already saved.

Restoring the Integrated Fiery Color Server to default settings

When you restore the Integrated Fiery Color Server to its default settings, all queued jobs from the Integrated Fiery Color Server and the Job Log are cleared. You must perform Setup again because the Integrated Fiery Color Server is restored with default settings.

TO RESTORE THE INTEGRATED FIERY COLOR SERVER

- 1 On the digital press control panel, press the Web Applications button.
- 2 Press Setup.
- 3 Log in as Administrator with the Administrator password.
- 4 Press Factory Defaults.

Saving and restoring Integrated Fiery Color Server configuration



You can save the current configuration of the Integrated Fiery Color Server and restore it later, if necessary. To save and restore settings, use Configure. For information, see Configure Help.

The following settings are saved (if your Integrated Fiery Color Server supports them):

- Settings made in Setup (except Server Name)
- Impose templates saved in the default directory for these files on the Integrated Fiery Color Server
- Address books
- Virtual Printer settings
- Users and Groups information (login names and passwords)
- Custom spot colors

USB printing

Users can save PS, EPS, PCL, TIFF, and PDF files to a USB device and print those files on the Integrated Fiery Color Server. To print files automatically when you connect the USB drive to the Integrated Fiery Color Server, save the files to specific folders or to the root level on the USB drive.

Users can also print from the digital press control panel. For more information about printing, see [Printing from Windows](#) and [Printing from Mac OS](#).

To SET UP THE USB DEVICE FOR AUTOMATIC PRINTING

1 Configure, at a minimum, the following USB printing options in WebTools Configure > Network > Port > USB:

- Select Enable USB Port.
- For Default Queue, choose the connection to which the Integrated Fiery Color Server downloads files that do not specify a connection.
- Set USB Media Autoprint to Print All.

2 At a computer, create folders at the top level (root level) of the USB device named Print, Hold, and Direct.

3 Save the files from the computer to the USB drive.

Files copied to the Print, Hold, and Direct folders are downloaded to the corresponding print connection on the Integrated Fiery Color Server when you connect the USB device to the Integrated Fiery Color Server.

Files copied to the root level of the device (and any folder under the root level that is not named for a print connection) are downloaded to the queue that you configured for USB printing.



Prepare the USB device with the correct folder structure and appropriate files before the device is connected to the Integrated Fiery Color Server. Because file processing begins as soon as you connect the device to the Integrated Fiery Color Server, there is no time to do any file management tasks such as moving files to a different folder or deleting files.

4 Remove the USB device from the computer and connect it to the USB port on the Integrated Fiery Color Server.

For the location of the USB port, see [page 20](#).



Make sure the USB device is properly stopped before you disconnect it from the computer.

Managing e-mail address books

You can manage e-mail/Internet Fax addresses on the Integrated Fiery Color Server by sending e-mail messages in a particular format to the Integrated Fiery Color Server. Management features are overwriting the address book, adding new addresses, removing addresses, and retrieving current addresses on the Integrated Fiery Color Server.

Users use the address books when they send attachment files to a particular e-mail/Internet Fax address.

NOTE: E-mail messages can be sent only from an administrator account.

The Integrated Fiery Color Server supports the following address books:

Admin allows members to modify the address book, get the current address book from the Integrated Fiery Color Server, cancel a job, or receive the status of a job. However, membership in this address book does not provide the same privileges as the Administrator password ([page 59](#)) does.

Print includes users who have print access. Only users whose e-mail addresses are in the Print address book are authorized to submit jobs via e-mail to the Integrated Fiery Color Server. Unauthorized users receive an e-mail reply that their job was not accepted by the Integrated Fiery Color Server for printing.

User includes users who have scanning access.

Fax is used for Scan to Internet FAX. This address book is used for sending scan files via Internet FAX to the Integrated Fiery Color Server. You cannot use addresses in the address book to send an e-mail to the Integrated Fiery Color Server.

Corporate is an LDAP address book used for Scan to E-mail. It allows users to send files with Remote Scan to a list of addresses registered on an LDAP server.

NOTE: Perform LDAP Setup before setting this address book. For more information, see WebTools Configure Help.

When a print job is submitted via e-mail, the Integrated Fiery Color Server first checks the Print address book. If the user's e-mail address does not match any entry in the Print address book, the job does not print. Instead, the user receives an e-mail stating that the print job was not accepted.

The default wildcard character "@" is stored in the Print address book. This allows any user to print to the Integrated Fiery Color Server until the administrator adds the first entry in the Print address book.

To manage address books, send an e-mail to the Integrated Fiery Color Server with commands in the Subject and Message fields. The Integrated Fiery Color Server responds by e-mail with information about each request, as described in the following table.



To add or remove more than one address at a time, list the addresses on separate lines in the message field of the e-mail.

Task	Administrator subject field	Administrator message field	E-mail response subject field	E-mail response message field
To retrieve a specific address book	#GetAddressBook <i>name of address book</i> For example: #GetAddressBook Admin		Address Book <i>name of address book</i> For example: Address Book Admin	List of addresses in the specified address book
To add an address to an address book	#AddAddressTo <i>name of address book</i> For example: #AddAddressTo Print	name@domain or "display name" <name@domain>	Added to Address Book <i>name of address book</i> For example: Added to Address Book Print	List of addresses added to the address book The Integrated Fiery Color Server also lists any addresses that cannot be added and includes the reason
To clear an address book	#ClearAddressBook <i>name of address book</i> For example: #ClearAddressBook User		Address Book <i>name of address book</i> cleared or Address Book <i>name of address book</i> not cleared For example: Address Book User cleared	If the address book is not cleared, the reason is given
To delete an address from an address book	#DeleteAddressFrom <i>name of address book</i> For example: #DeleteAddressFrom User	name@domain or "display name" <name@domain>	Removed from Address Book <i>name of address book</i> For example: Removed from Address Book User	Deleted Address 1 Deleted Address 2 The Integrated Fiery Color Server also lists any addresses that cannot be deleted and includes the reason
To receive help for Integrated Fiery Color Server e-mail services	#Help		RE: Help	Provides troubleshooting e-mail syntax

TO RETRIEVE AN ADDRESS BOOK FROM THE INTEGRATED FIERY COLOR SERVER

- 1 Start your e-mail application.**
- 2 Open a new message window.**
- 3 Type the e-mail address of the Integrated Fiery Color Server in the To line.**
- 4 Type the command and the address book name in the Subject line.**

For example, to retrieve the User address book, type “#GetAddressBook User.”

- 5 Send the message.**

The return message includes the addresses of the specified address book.

- 6 Copy the addresses to a text file or save the message for your records.**
-

TO RESTORE AN ADDRESS BOOK TO THE INTEGRATED FIERY COLOR SERVER

- 1 Start your e-mail application.**
- 2 Open a new message window.**
- 3 Type the e-mail address of the Integrated Fiery Color Server in the To line.**
- 4 Type the command and the address book name in the Subject line.**

For example, to restore the User address book, type “#GetAddressTo User.”

- 5 Copy the addresses to the body of the e-mail with each address on a separate line.**

You can include nicknames. However, when a nickname or address is longer than one line, edit it to fit on one line.

- 6 Send the message.**
- 7 In the return e-mail message, confirm that the addresses were restored correctly.**

VDP Search Path

In **Configure > PDL > VDP**, use the following information for setting the file search path for VDP objects.

Setting common global search paths

A file search path specifies where common VDP resources (for example, PostScript images and fonts) are stored, either on a network computer or on the Integrated Fiery Color Server. The Integrated Fiery Color Server searches predefined paths until it finds the necessary resources. If the resource is not found, the job fails. Inform users of the paths that you specify so that their jobs can access the resources.

The Integrated Fiery Color Server searches paths for VDP resources in the following order:

- 1 Path that the user specifies in the job**
See [“Allowing users to define a search path for a single job”](#) on page 68.
- 2 Paths that you define in Configure for common global objects**
- 3 Path that the application specifies for VPS or PPML resources when it generates the data stream**

For any of these paths, the Integrated Fiery Color Server searches the folder and then the subfolders within that folder. After the Integrated Fiery Color Server locates the first resource, it attempts to locate the second resource in the same folder. If the second resource is not found in the same folder, the Integrated Fiery Color Server searches according to the original order.

TO SPECIFY A GLOBAL PATH FOR COMMON VDP OBJECTS

- 1 In Configure, choose PDL > VDP.**
For information about accessing Configure, see [page 53](#).
- 2 Click Add.**
- 3 In the window that appears, type the path name or click Browse to locate the path.**
If you type the path name, use the format of a mapped drive (for example, Z:\folder) or a UNC (for example, \\computer name\folder).
- 4 If the path is located on a computer that requires authentication, select Remote Server Authentication and enter the appropriate user name and password.**
- 5 Click OK.**
- 6 To add more paths, click Add and repeat these steps.**
- 7 Click Apply.**

Allowing users to define a search path for a single job

A user can enter a single search path when the user sends the job from a Windows printer driver, or when someone later overrides the job to include a search path. The path must be fewer than 256 characters and in the format of either a mapped drive (for example, Z:\folder) or a UNC (for example, \\computer name\folder).

To use a mapped drive, it must be recognized by the Integrated Fiery Color Server. For example, if the user specifies a path on the user's computer (for example, C:\My Documents\VDP), the Integrated Fiery Color Server assumes this is the C:\ drive on the Integrated Fiery Color Server. In another example, if "Z:" is a network drive that users access on their network, the Integrated Fiery Color Server does not know the location to which "Z:" refers. Therefore, you must map a drive so that the Integrated Fiery Color Server also recognizes the location where resources are stored.

If you have enabled Remote Desktop in Setup, connect to the Integrated Fiery Color Server with Remote Desktop and use the following procedure.

TO MAP A DRIVE TO A LETTER RECOGNIZED BY THE INTEGRATED FIERY COLOR SERVER

- 1 From a Windows Explorer window, choose Tools > Map Network Drive.
- 2 In the Drive menu, choose a letter that is not currently mapped.
- 3 In the path field, type the UNC of the network computer that contains the shared resources, or click Browse and locate the computer on the network.
- 4 Click Finish.
- 5 If you are prompted to enter a network password, type Administrator in the Connect As field, type the password in the Password field, and click OK.
- 6 Inform the user to use the drive letter in the VDP search path when the user sends the job to the Integrated Fiery Color Server.

Printing the Configuration page

The Configuration page lists the settings in effect for the current Setup. After you have performed Setup, print a Configuration page to confirm your settings. Post the current Configuration page near the Integrated Fiery Color Server for quick reference. Users need the information on this page, such as the current printer default settings.

TO PRINT THE CONFIGURATION PAGE FROM COMMAND WORKSTATION

- 1 In Command WorkStation, choose **Print Pages** from the **Server** menu.
- 2 Click **Configuration**.
- 3 Click **Print**.
- 4 Type or choose the number of copies and click **OK**.

TO PRINT THE CONFIGURATION PAGE FROM THE DIGITAL PRESS CONTROL PANEL

- 1 On the digital press control panel, press the **Web Applications** button.
- 2 Press **Info**.
- 3 Press **Configuration**.
- 4 At the confirmation screen, press **Yes**.

Maintaining optimal Integrated Fiery Color Server performance

The Integrated Fiery Color Server does not require maintenance. Beyond the obvious requirements of servicing and maintaining the digital press and replenishing consumables, you can improve the overall performance of your system by doing the following:

- **Make the best use of your network connections.**

Publish only connections that will be used. The Integrated Fiery Color Server constantly checks all published connections, even if they are inactive.

Review the published connections by printing a Configuration page. Eliminate the connections that are not being used. It is easy to re-establish them when needed.

- **Leave less urgent jobs to times when there is less network traffic or printing.**

You can print recurring print jobs or jobs that are not urgent to the Hold queue. At low-traffic times, the administrator or a user of the job management tools with Operator privileges can move (or copy) all the Hold queue jobs to the Print queue for printing.

- **Reduce unnecessary network communication.**

Large numbers of users running Fiery utilities, especially with frequent updates, may have a significant effect on Integrated Fiery Color Server performance.

- **Make sure you have adequate disk space on the Integrated Fiery Color Server.**

Periodically review the list of jobs in the Hold queue, and the number of jobs being retained in the Printed queue.

An administrator can print or delete jobs that are in the Printed queue and Hold queue. Consider printing or offloading inactive jobs. If disk space on the Integrated Fiery Color Server is frequently low, you can disable the Printed queue and choose not to publish the Hold queue (in Printer Setup).

To move or remove queued jobs, use the job management tools. When you free up disk space by removing inactive jobs, new jobs are spooled and printed more quickly.

Shutting down, rebooting, and restarting the Integrated Fiery Color Server

Generally, you can leave the Integrated Fiery Color Server and the digital press running all the time. This section describes how to shut down, reboot, and restart the Integrated Fiery Color Server when necessary.

Shutting down the Integrated Fiery Color Server

When you need to shut down the Integrated Fiery Color Server, fonts downloaded to the Integrated Fiery Color Server are not deleted. Jobs in the Hold and Print queues and jobs that have been processed but not printed are not deleted and are available for printing when you reboot or restart the Integrated Fiery Color Server.

TO SHUT DOWN THE INTEGRATED FIERY COLOR SERVER

- 1 **Make sure that the Integrated Fiery Color Server is not receiving, processing, or printing any files.**

If the system has just finished processing, wait at least five seconds after the system reaches Idle before beginning the shutdown procedure.

- 2 **Press the digital press main On/Off button.**

Rebooting or restarting the Integrated Fiery Color Server

Restarting the Integrated Fiery Color Server resets the Integrated Fiery Color Server system software, but does not reboot the entire system. Network access to the Integrated Fiery Color Server is temporarily interrupted and all currently processing jobs are terminated.



If you use a USB thumb drive, remove it before rebooting. Otherwise, the Integrated Fiery Color Server does not reboot.

TO REBOOT OR RESTART THE INTEGRATED FIERY COLOR SERVER FROM THE DIGITAL PRESS CONTROL PANEL

- 1 **Make sure the Integrated Fiery Color Server is not receiving, processing, or printing any files.**
- 2 **Press Web Applications > Setup > Restart Server, and select either Reboot System or Restart Server.**
- 3 **Press the All Services button to exit.**

TO REBOOT OR RESTART THE INTEGRATED FIERY COLOR SERVER FROM COMMAND WORKSTATION

- 1 **Make sure that the Integrated Fiery Color Server is not receiving, processing, or printing any files.**
- 2 **In Command WorkStation, choose Restart Server or Reboot Server from the Server menu.**

TROUBLESHOOTING

This chapter provides troubleshooting tips.

Troubleshooting the Integrated Fiery Color Server

Startup diagnostics are described in the documentation for service technicians. Contact your authorized service/support center if you see startup error messages on Command WorkStation or if the Integrated Fiery Color Server does not reach the Idle state.



Runtime error messages

For error messages related to canceling jobs and printing, including the Disk Full message and alerts to load media, see Command WorkStation Help.

You can turn on PostScript error reporting as a print option from Mac OS applications.

Printer not found

Most failures to find a printer on the network are due to conflicting or missing name or address settings for the Integrated Fiery Color Server. You must enter names in specific places. The required names are:

- TCP/IP host name (also known as the DNS name), which is defined by your organization.
Enter the host name as the Server Name in Integrated Fiery Color Server Setup.
- Remote printer (internal machine) name. Use one of the following:
 - print
 - hold
 - direct

NOTE: If you change the DNS name (TCP/IP host name) of the Integrated Fiery Color Server, you must reconfigure one of the utilities on each computer.

For the appropriate name, see the following table.

In this location	For this item	TCP/IP networks	See
General Server Setup	Server Name option	Administrator defines name	Configure Help
Windows hosts file	host name	DNS name (TCP/IP host name)	page 9
Windows setup for TCP/IP	lpd host name	DNS name (TCP/IP host name)	page 12
	Name of printer on lpd host machine	print, hold, or direct	
UNIX /etc/printcap file (BSD)	rp line	print, hold, or direct	page 13
Solaris	lpadmin queue name	print, hold, or direct	
Add New Server dialog box, when configuring a utility	Server Name	DNS name (TCP/IP host name)	Utilities

Cannot connect to the Integrated Fiery Color Server with utilities

If users cannot connect to the Integrated Fiery Color Server, check the following:

Integrated Fiery Color Server Setup: The appropriate network protocol must be enabled, with the correct parameters (for example, for TCP/IP, the IP address), and you must publish either the Print queue or Hold queue.

You can check these settings quickly by printing a Configuration page.

On the client computer: The appropriate network protocols must be loaded.

Cannot connect to the Integrated Fiery Color Server with Command WorkStation

If there is a problem connecting to the Integrated Fiery Color Server, an error message is displayed.

The problem can occur when:

- The Integrated Fiery Color Server is initially turned on
- The Integrated Fiery Color Server restarts
- You have changed settings affecting the server address and have not reconfigured the connection to the server

If you experience this problem, try the following solutions, in this order:

- A remote computer running utilities or WebTools may be interfering by obtaining status information. If possible, close the remote application, and try to connect again.
- Restart the Command WorkStation software and try to connect again.
- Restart the Integrated Fiery Color Server.

INDEX

Numerics

1000BaseT 20
100BaseTX 20
10BaseT 20

A

access levels, setting 14
Account Name option 51
Active Directory 12
Add Filter option, Security Setup 41
administrator
 functions 58
 installing the server 10
 password 59
 privileges 15
Administrator E-mail Address option 51
Align Tray command 28
Allow Courier Substitution option 54
Allow Printing From option 31
anonymous, LDAP authentication method 46
Append CR to LF option 54
AppleTalk Setup 43
AppleTalk Zone option 43
Attachment Maximum Size option 49
authentication
 required for FTP printing 45
 required for general printing 31
Authentication Password option (SNMP) 48
Authentication Type option (SNMP) 48
Auto Clear Job Log Every 55 Jobs option 33
Auto Print Job Log Every 55 Jobs option 32
Auto Trapping option 54

B

binary data, printing via USB port 35
BOOTP protocol 36, 37

C

Calibrate command 28
changing
 Administrator password 59
 host name or DNS name 72
characters per inch 55
characters, used in Command WorkStation 29
Clear Each Scan Job option 49
Clear Job Log Every 55 Jobs option 33
Clear Server command 60
clearing the Job Log 33
client setup
 overview 10
 WebTools 57
CMYK printing by default 54
Color Charts 27
Color Mode option 54
Command WorkStation
 Configuration page 69
 problems connecting to server 74
 Setup from 53
Comment option, Windows printing 39
Configuration page
 printing 27, 69
 troubleshooting connection problems 73
Configure (WebTool) 18
Configure IP Ports option 40
configuring network servers 34
connecting network cable 19
contact information for supporting Print Server 30
Control Panel Map 24
Convert Paper Sizes option 54
Courier font, substitution with 54
Cover Page option 55

D

- Default LPD Queue option 44
- default settings 62
- Delete Filter option, Security Setup 41
- DHCP protocol 36, 37
- Direct connection
 - described 17
 - publishing 30
 - required for downloading fonts 17
- disk space 70
- DNS (Domain Name Server)
 - implications of changing 72
 - listing server name 12
 - Setup 38
- DNS Address option 38
- Docs WebTool 18
- Domain Name option, DNS Setup 38
- downloading fonts, Direct connection requirement 17
- Downloads (WebTool) 18

E

- E-mail Address option, E-mail Setup 51
- E-mail Log 27
- E-mail Setup 50
- Edit Filter option, Security Setup 41
- Enable AppleTalk option 43
- Enable Auto IP Configuration option 36
- Enable DNS option 38
- Enable E-mail Services option 50
- Enable IP Filter option 41
- Enable IPP option 44
- Enable IPv6 option 37
- Enable Job Mismatch option 31
- Enable LPD option 44
- Enable MAC Address Filter option 35
- Enable Port 9100 Print Services option 44
- Enable Printed Queue option 30
- Enable Proxy Setup option 49
- Enable SMB option 43
- Enable SNMP option 47
- Enable SNTTP option 29
- Enable USB Port option 35
- end-of-file (EOF) character, USB communication 35
- Enter Password option, Administrator password 59

error messages

- “No AppleTalk zone found” 43
- PostScript 55
- runtime 72

Ethernet

- Port Setup 34
- speed 34

- Ethernet connector 20

F

- Face-Down Printing option 55
- Factory Defaults 62
- file types and USB port setup 35
- Filter Policy option 41
- Font Number (PCL) option 55
- font substitution 54
- fonts
 - pitch 55
 - printer fonts on server 27
 - printing font list 27
 - size 55
 - source 55

- Form Length option 55

- FreeForm 1 Record Length option 32

- FreeForm master 55

- FTP Log 27

- Functions menu 26

G

- Gateway Address option 37
- Gateway Type option 37
- gateway, assigning address automatically 37
- GSSAPI, LDAP authentication method 46

H

- Hold queue
 - described 17
 - publishing 30
- Home (WebTool) 18
- host name 12, 72

I

- Ignore EOF Character option 35
- improving server performance 70
- Incoming Server option, E-mail Setup 50
- Info command 27
- installing
 - server on network 10

Internet, accessing server with WebTools 18

IP address

- assigning automatically 36, 37
- assigning manually 37
- for Ethernet Setup 37, 38
- static 37

IP filtering 41

IPSec Setup 42

IPv4, TCP/IP 36

IPv6, TCP/IP 37

J

Java to support Internet browser 57

Job Log

- clearing automatically 33
- defined 32
- printing automatically 32
- printing manually 27
- setting the page size used 33
- Setup 32

Job Log, clearing jobs from 60

job management tools

- deleting jobs with 60
- printing Job Log 32

Jobs Saved in Printed Queue option 31

L

LDAP Setup 45

line feed, PCL jobs 54

LPD (TCP/IP) 44

LPR (TCP/IP), UNIX 13

M

maintaining server performance 70

Maximum Number of Results option, LDAP 47

Microsoft Office 32

Mismatch Action option 31

Mismatch Timeout option 31

N

naming the server 29, 72

Native Document Setup 32

network

- installation summary 10, 11
- protocols supported 9
- TCP/IP 11

Network Setup 34

O

Offset Mode option 55

Operator password

- changing 59
- privileges 16

Orientation option 55

Outgoing Server option, E-mail Setup 51

P

Page Order option 55

PANTONE 27

Paper Size for System Pages option 55

passwords

- Administrator privileges 15
- Administrator, changing 59
- E-mail Setup 51
- Operator privileges 16
- setting 15

PDF files, font substitution in 54

Personality option 31

Pitch option 55

Points option 55

Polling Interval option, E-mail Setup 51

Port 9100 Queue option 44

Port 9100 Setup 44

Port Filtering Setup 40

Port Setup, Ethernet Setup 34

Port Timeout in Seconds option 35

PostScript error 55

PostScript files, printing 35

PostScript Setup, *see* PS Setup

Preview While Processing option 30

Primary DNS Server option 38

Print Job Log Every 55 Jobs option 32

Print Master option 55

Print queue

- publishing 30
- reprinting jobs 30

Print queue, described 17

print queues 30

Print Start Page option 30

Print to PostScript Error option 55

Print via E-mail option 50

Printed queue 16, 30

printer

- connection failure 72
- not found 72
- not in Chooser 72

- printer drivers, Point and Print 44
- Printer Screen Mode option 56
- Printer Setup 29
- printing
 - CMYK by default 54
 - Configuration page 27
 - connections 16
 - connections and queues 29
 - cover page for each job 55
 - font list 27
 - Job Log automatically 32
 - Microsoft Office files 32
 - PostScript files 35
 - reprinting previously printed jobs 16
 - server information pages 27
 - start page at startup 30
- Privacy Password option (SNMP) 49
- Privacy Type option (SNMP) 49
- protocols
 - for assigning IP address automatically 37
 - setting up 36
- protocols, network 9
- Proxy Setup, FTP
 - enabling 49
 - IP address 49
 - port number 50
 - user name 50
 - user password 50
- PS (PostScript) Setup 31
- Publish Direct Connection option 30
- Publish Hold Queue option 30
- Publish Print Queue option 30
- publishing connections, overview 16

Q

- queues
 - clearing all 60
 - publishing 30

R

- remote desktop connection 61
- reprinting jobs 16
- Require Password for Printing (FTP) option 45
- Require Password to Print Job Log option 33
- Restart Server command 28
- Restore SNMP To Defaults option 47
- restoring server configuration 62
- Resume Printing command 26
- RJ-45 connector 20

S

- Scale to Fit option 56
- Scan Settings WebTool 18
- Scope (SLP Setup) 52
- Secondary DNS Server option 38
- Secure Print command 26
- Secure User username option (SNMP) 48
- Security Level option (SNMP) 47
- Select protocol option, for assigning IP address 37
- server
 - back view showing connectors 20
 - maintaining and improving performance 70
 - naming 29
 - saving and restoring configuration 62
 - Setup 21
 - touch panel display 25
- Server Name option
 - Server Setup 29
 - Windows printing 39
- Server Type option, E-mail Setup 50
- Service Setup 43
- Services
 - IP Filtering Setup 41
 - Port Filtering Setup 40
- Set Driver Type option 44
- Setup
 - accessing 25
 - administrative functions 58
 - from a network computer 53
 - Job Log Setup 32
 - Network Setup 34
 - Port Setup 34
 - Printer Setup 29
 - Protocol Setup 36
 - PS (PostScript) Setup 31
 - screen types 25
 - Service Setup 43
 - summary 22
- Setup Summary command 28
- simple, LDAP authentication method 46
- SLP Setup (Service Location Protocol) 52
- SNMP Community Name option 48
- SNMP Setup 47
- Start Page, printing 30
- Subnet Mask option 37
- Suspend Printing command 26
- Symbol Set option 56
- system software, updating 60

T

TCP/IP

- Ethernet Setup 36
- host name 72
- protocol setup 36
- published connections 30
- with UNIX workstations 13

terminology, general 7

Test Page, printing 27

Text/Graphics Edge Enhancement option 56

Time Server option 29

Time Zone option 29

Timeout option

- E-mail Setup 51
- FTP Setup 45
- LDAP Setup 46

touch panel display

- accessing Setup 25
- illustrated 25

troubleshooting

- Command WorkStation connection problems 74
- connection to printer fails 72
- Printer not found in the selection list of utilities 73
- Printer not found on network 72

twisted pair cable 20

U

UNIX

- on TCP/IP network 13
- printcap file 73
- remote printer name 73

Unsecure User username option (SNMP) 48

USB Media Auto Print option 35

USB Port Setup 35

USB printing 63

USB Setup 35

Use Automatic Configuration option 39

Use Character Set option 29

Use PDF XObjects option 56

utilities

- required print connections 30

V

VDP Setup 32

W

WebTools

- Configure 18
- Docs 18
- Downloads 18
- Home 18

Windows printing

- enabling 43
- selecting drivers for 44

Windows printing, domain issues 12

Windows Setup 39

WINS IP Address option 39

Workgroup or Domain option 39

