



Xerox 700 Digital Color Press with Integrated
Fiery® Color Server



Printing from Mac OS

© 2008 Electronics for Imaging, Inc. The information in this publication is covered under [Legal Notices](#) for this product.

45072740
21 April 2008

CONTENTS

| | |
|---|----|
| INTRODUCTION | 5 |
| Terminology and conventions | 5 |
| About this document | 6 |
| User software | 6 |
| Downloading printer drivers using WebTools | 7 |
| System requirements | 7 |
| SETTING UP PRINTING ON MAC OS X | 8 |
| Installing Mac OS X printer drivers and printer description files | 8 |
| Setting up the Integrated Fiery Color Server on Mac OS X | 9 |
| Configuring installable options | 14 |
| PRINTING UTILITIES | 16 |
| Printing from a USB device | 16 |
| FTP printing | 17 |
| Installing fonts on Mac OS X computers | 18 |
| PRINTING FROM MAC OS X | 19 |
| Printing from applications with Mac OS X | 19 |
| Setting print options and printing from Mac OS X | 19 |
| Using presets | 27 |
| Retrieving secure print jobs on the digital press control panel | 29 |

| | |
|---|----|
| Defining and printing custom page sizes | 31 |
| Defining and editing custom page sizes in Page Setup | 31 |
| Defining and printing custom page sizes with the printer driver | 34 |
| Enabling Two-Way Communication | 36 |
| INDEX | 39 |

INTRODUCTION





This document describes how to install printer drivers and printer description files for the Xerox 700 Digital Color Press with Integrated Fiery Color Server and how to set up printing from Apple Mac OS X computers. It also describes how to print to the Integrated Fiery Color Server. For information about setting up network servers and clients to use the Xerox 700 Digital Color Press with Integrated Fiery Color Server, see [Configuration and Setup](#). For general information about using the color digital press, your computer, application software, or network, see the documentation that accompanies those products.



For information about supported operating systems and system requirements, see [Welcome](#).

Terminology and conventions

This document uses the following terminology and conventions.

| Term or convention | Refers to |
|---|---|
| Aero | Integrated Fiery Color Server (in illustrations and examples) |
| Digital press | Xerox 700 Digital Color Press |
| Integrated Fiery Color Server | Xerox 700 Digital Color Press with Integrated Fiery Color Server |
| Mac OS | Apple Mac OS X |
| Titles in <i>italics</i> | Other documents in this set |
|  | Topics for which additional information is available by starting Help in the software |
|  | Tips and information |
|  | Important information |
|  | Important information about issues that can result in physical harm to you or others |

About this document

This document covers the following topics:

- Installing printer files on Mac OS computers
- Setting up printing connections on Mac OS computers
- Installing Integrated Fiery Color Server printing utilities
- Printing from Mac OS computers

User software

The following table lists the user software that is described in this document. This is the user software you need for setting up basic printing on the Integrated Fiery Color Server. Other documents may describe other user software depending on what you are trying to accomplish.

| User Software | Description |
|---|--|
| PostScript Printer Description (PPD/Plugin) files | These files are used with the PostScript printer driver that allows the Integrated Fiery Color Server to appear in the Print and Page Setup dialog boxes of popular applications. The Integrated Fiery Color Server PPDs provide information about the digital press to your application and printer driver. |
| PostScript screen fonts | These are the PostScript/TrueType screen fonts that correspond to the printer fonts installed on the Integrated Fiery Color Server. For a complete list of PostScript/TrueType fonts installed on the Integrated Fiery Color Server, print a font list. For more information, see Command WorkStation Help. |



Downloading printer drivers using WebTools

You can install printer drivers and printer description files from the User Software DVD or directly from the Integrated Fiery Color Server with WebTools.

For more information about setting up and starting WebTools, see [Utilities](#).

TO DOWNLOAD PRINTER DRIVERS WITH WEBTOOLS

- 1 Start your Internet or intranet browser and type the DNS name or IP address of the Integrated Fiery Color Server.**
- 2 Click the Downloads tab.**
- 3 Click the link for the printer drivers that you want to install (Printer Files for Mac OS X).**

A file named OSX.dmg is downloaded to your desktop. The file contains a folder named Printer Driver in a BinHex-encoded, compressed format. If your Internet browser is equipped with an expander utility, such as StuffIt Expander, the folder decodes and decompresses automatically.

If the Printer Driver folder does not automatically decode and decompress, double-click the file to start the utility that performs that function.

- 4 Install the appropriate printer driver for your operating system.**

For instructions on installing the printer driver for Mac OS X, see “[Installing Mac OS X printer drivers and printer description files](#)” on page 8.

System requirements

For detailed system requirements, see [Welcome](#), provided in your media pack.

SETTING UP PRINTING ON MAC OS X

To set up the Integrated Fiery Color Server as a PostScript printer on a Mac OS X computer, install the printer driver files that correspond to your digital press. The printer driver files are provided on the User Software DVD or can be downloaded using WebTools. Printer drivers provide a way to communicate information about print jobs between your applications, the Integrated Fiery Color Server, and the digital press.

Installing Mac OS X printer drivers and printer description files

The User Software DVD contains the following software for Mac OS X (see the OSX:Printer Driver folder):

- **OSX Installer:** Installs the printer driver files required to print from Mac OS X.
- **Language folders:** Printer description files that are installed by OSX Installer. You do not need to open these folders or install them manually on your computer. The appropriate files are installed by OSX Installer.

TO INSTALL THE PRINTER DESCRIPTION FILES FOR MAC OS X

- 1 **Quit all open applications.**
- 2 **Make sure that the Printer Setup Utility is not running on your computer.**

Printer Setup Utility updates the list of available printers when it starts. If a printer description file is added while Printer Setup Utility is running, you cannot select the associated printer model until you restart.
- 3 **Insert the User Software DVD into the DVD drive.**
- 4 **Open the OSX:Printer Driver folder on the User Software DVD.**
- 5 **Double-click the OSX Installer icon to start installing the printer driver.**
- 6 **Follow the on-screen instructions.**

The OSX Installer installs the printer driver files that correspond to the Integrated Fiery Color Server.
- 7 **When copying is complete, click Quit.**

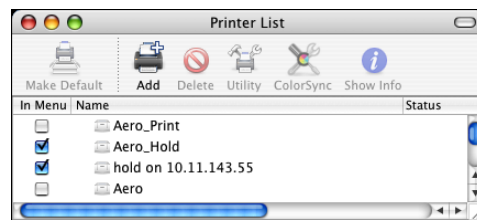
Setting up the Integrated Fiery Color Server on Mac OS X

After you install the printer driver files on Mac OS X, you must set up the Integrated Fiery Color Server in the Printer Setup Utility. This section describes how to set up the Integrated Fiery Color Server and configure the Integrated Fiery Color Server for the options installed on the digital press.

TO SET UP THE INTEGRATED FIERY COLOR SERVER IN THE PRINTER SETUP UTILITY (FOR MAC OS X v10.3.9)

1 Choose Utilities from the Go menu and start the Printer Setup Utility.

The Printer List dialog box appears.

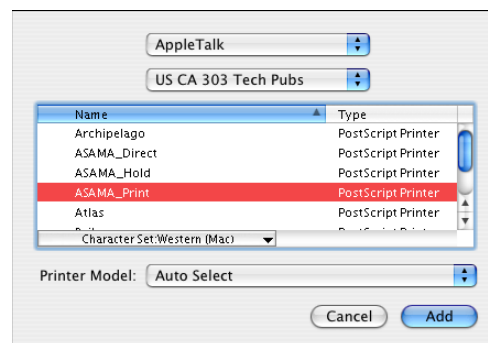


2 Click Add.

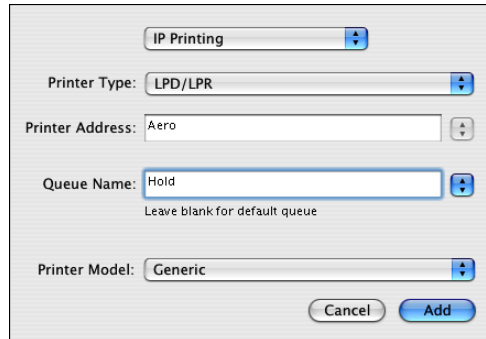
3 Choose AppleTalk or IP printing from the menu that appears.

4 For AppleTalk, choose the AppleTalk Zone and choose the name of the Integrated Fiery Color Server.

If the zone is not listed as the Default Zone, or one of the Recent Zones, select AppleTalk Network, select the zone, and then click Choose. Proceed to [step 6](#).



For IP Printing, type the IP address or DNS name of the printer in the Printer Address field and the print connection (Print, Hold, or Direct) in the Queue Name field.

The image shows a 'Add Printer' dialog box for IP Printing. At the top, there is a dropdown menu set to 'IP Printing'. Below it are four fields: 'Printer Type' with a dropdown set to 'LPD/LPR', 'Printer Address' with a text field containing 'Aero', 'Queue Name' with a dropdown set to 'Hold' and a note 'Leave blank for default queue' below it, and 'Printer Model' with a dropdown set to 'Generic'. At the bottom right are 'Cancel' and 'Add' buttons.

- 5 For **Printer Model**, choose **Xerox** and the appropriate model, and then select the file for the **Integrated Fiery Color Server PPD**.

- 6 Click **Add**.

The Integrated Fiery Color Server is added to the list of printers.

- 7 (Optional) With the **Integrated Fiery Color Server** selected, choose **Printers > Create Desktop Printer**, specify a name and location for the icon, and then click **Save**.

You can now print a file to the Integrated Fiery Color Server by clicking and dragging the file to the Integrated Fiery Color Server Desktop Printer icon.

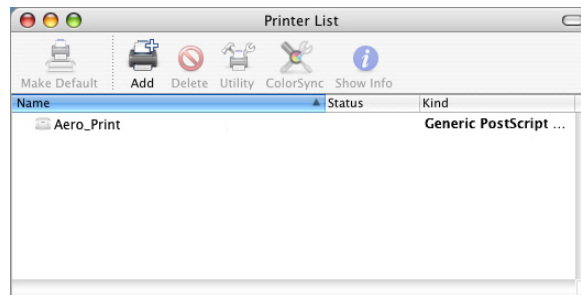
You are ready to configure installable options for the Integrated Fiery Color Server. For information about configuring installable options, see [“To configure installable options”](#) on page 15.

TO SET UP THE INTEGRATED FIERY COLOR SERVER WITH BONJOUR CONNECTION TYPE IN THE PRINTER SETUP UTILITY

NOTE: Bonjour printers are available to Mac OS X v10.4.x computers only if Bonjour is enabled on the Integrated Fiery Color Server.

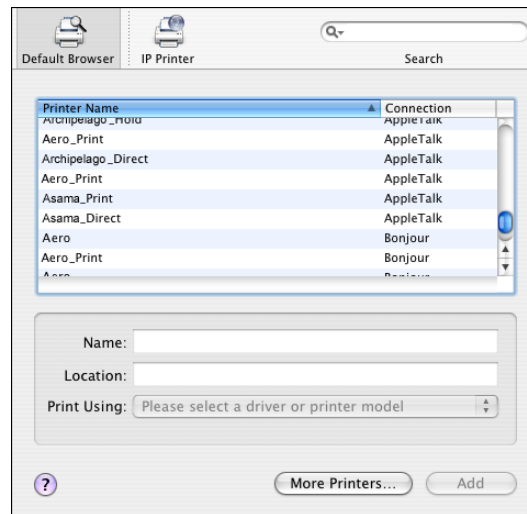
1 Choose Utilities from the Go menu and start Printer Setup Utility.

The Printer List dialog box appears.



2 Click Add.

3 Click Default Browser.



4 Select the printer with the Bonjour connection type from the Printer Name list.

5 Click Add.

6 Choose the installable options and click Continue.

The Integrated Fiery Color Server is added to the list of printers.

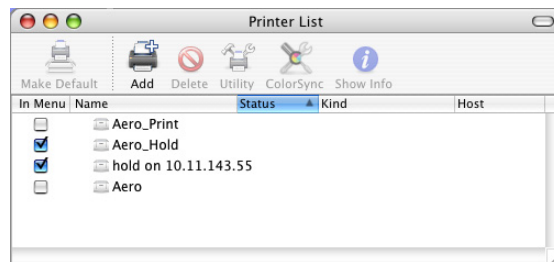
7 To create a desktop printer, select the Integrated Fiery Color Server, choose Printers > Create Desktop Printer, specify a name and location for the icon, and then click Save.

You can now print a file to the Integrated Fiery Color Server by dragging the file to the Integrated Fiery Color Server Desktop Printer icon.

TO SET UP THE INTEGRATED FIERY COLOR SERVER IN THE PRINTER SETUP UTILITY (FOR MAC OS X v10.4)

1 Choose Utilities from the Go menu, and start Printer Setup Utility.

The Printer List dialog box appears.

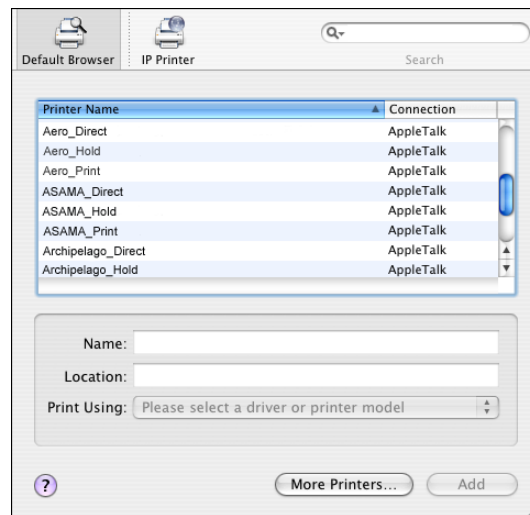


2 Click Add.

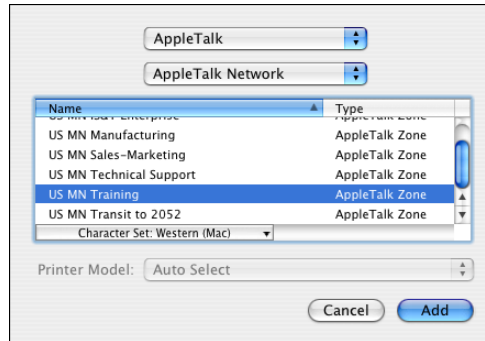
3 Choose the Default Browser tab or the IP Printer tab.

4 In the Default Browser, choose the name of the Integrated Fiery Color Server with the AppleTalk connection type from the Printer Name list.

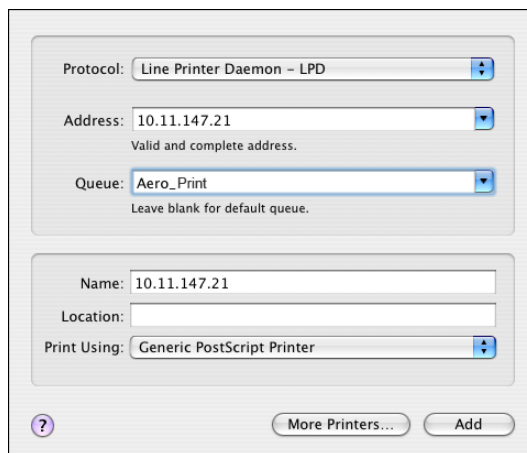
If the printer is not listed in the Printer Name list, click More Printers.



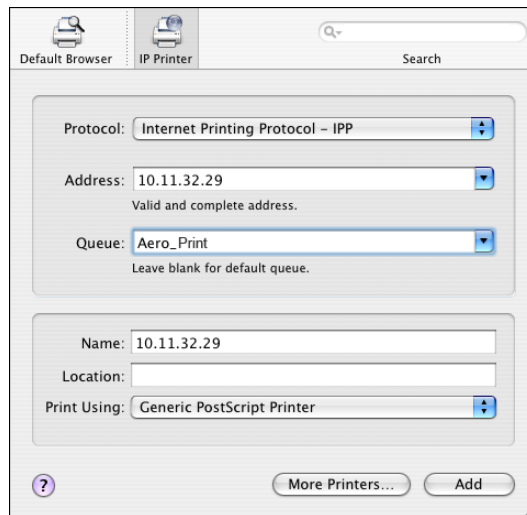
If the zone is not listed as the Default Zone, or one of the Recent Zones, select AppleTalk Network, select the zone, and then click Choose. Proceed to [step 6](#).



For LPD/LPR printing, choose Line Printer Daemon - LPD, type the IP address or DNS name of the printer in the Address field, and the print connection (Print, Hold, or Direct) in the Queue field. Proceed to [step 5](#).



For IP Printing, choose Internet Printing Protocol - IPP, type the IP address or DNS name of the printer in the Address field, and the print connection (Print, Hold, or Direct) in the Queue field. Proceed to [step 5](#).



- 5 For Printer Model or Print Using, choose Xerox and the appropriate model, and then select the file for the Integrated Fiery Color Server PPD.
- 6 Click Add.
- 7 Choose the installable options and click Continue.

The Integrated Fiery Color Server is added to the list of printers.

NOTE: If you want to change the configuration for the installable options, or choose AppleTalk connection, see [“To configure installable options”](#) on page 15.

- 8 (Optional) To create a desktop printer, select the Integrated Fiery Color Server, choose Printers > Create Desktop Printer, specify a name and location for the icon, and then click Save.

You can now print a file to the Integrated Fiery Color Server by dragging the file to the Integrated Fiery Color Server Desktop Printer icon.

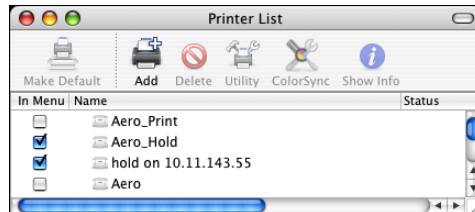
Configuring installable options

For Mac OS X v10.3.9, you must configure the Integrated Fiery Color Server for the options installed on the digital press to allow the Integrated Fiery Color Server to take advantage of the digital press options after you complete the printer driver installation. Configure the options manually. You can change the configuration for the installable options later if necessary.

NOTE: For more information about the print settings, see [Print Options](#).

TO CONFIGURE INSTALLABLE OPTIONS

- 1 Choose Utilities from the Go menu and start the Printer Setup Utility.
- 2 Select your printer in the Printer List.



- 3 Choose Show Info from the Printers menu.
- 4 Choose Installable Options.
- 5 Select the appropriate settings.
- 6 Click Apply Changes.
- 7 Close the window.

PRINTING UTILITIES

The following methods allow you to print to the Integrated Fiery Color Server:

- USB device
- FTP printing

You can install the screen fonts from the User Software DVD. For more information about installing screen fonts, see [“Installing fonts on Mac OS X computers”](#) on page 18.

Printing from a USB device

You can print files on a USB device to the Integrated Fiery Color Server. To do so, save files to the USB device and download them directly to the Integrated Fiery Color Server. You can print files that originated on Mac OS computers.

You can print files automatically from a USB device to one of the standard print queues on the Integrated Fiery Color Server (Print, Hold, or Direct) or to published virtual printers. Verify with your administrator that these connections are published in Setup. For more information about virtual printers, see [Utilities](#).

Before you print files from a USB device, ask your administrator to configure the appropriate options. For more information about configuring the appropriate options, see [Configuration and Setup](#).

Automatic printing

To print automatically to Print, Hold, or Direct queues, or to published virtual printers with the Print All setting, set up folders on your USB device with the names Print, Hold, and Direct, and the names of any published virtual printers. When you plug the USB device into a USB port on the Integrated Fiery Color Server, the files in those folders are sent automatically to the corresponding queues.

TO PRINT FILES FROM THE USB DEVICE**1 Configure the USB printing options in Setup.**

For more information, see [Configure Help](#).

2 Create folders at the top (root) level of the USB device named Print, Hold, and Direct.**3 Copy the files (PS, EPS, PCL, TIFF, and PDF) from the user's computer to the USB device.**

Files copied to the Print, Hold, and Direct folders are downloaded to the corresponding print connection on the Integrated Fiery Color Server automatically when you connect the USB device to the Integrated Fiery Color Server. Files copied to the root level of the USB device are downloaded to the Print queue.

4 Remove the USB device from the computer and connect it to the USB connector on the Integrated Fiery Color Server.

For the location of the USB port, see [Configuration and Setup](#).



Make sure that the USB device is properly stopped before you disconnect it from the computer.

FTP printing

If FTP Services are enabled on the Integrated Fiery Color Server, the Integrated Fiery Color Server is set up as an FTP server. You can send jobs to the Integrated Fiery Color Server using FTP printing. For more information on configuring FTP Services, see [Configuration and Setup](#).

You can use any FTP client software. Before you can use FTP printing, the FTP client software requires the following information (see your administrator):

- IP address or DNS name for the Integrated Fiery Color Server
- Directory or path to send the job to, such as the Print Queue, Hold Queue, or published virtual printers (if supported)

NOTE: You cannot print to the Direct connection using FTP printing.

- User name and password (if required)

You can send PostScript (PS), Printer Control Language (PCL), Tagged Image File Format (TIFF), and Portable Document Format (PDF) files to the Integrated Fiery Color Server. Encapsulated PostScript (EPS) files are not supported for FTP printing.

TO PRINT FILES TO THE INTEGRATED FIERY COLOR SERVER USING THE FTP PROTOCOL**1 Connect to the Integrated Fiery Color Server with your FTP client software.**

Folders corresponding to the Print queue and Hold queue are displayed. Folders for any published virtual printer are also displayed.

2 Navigate to the folder representing the print connection or published virtual printer.**3 Upload your job to the folder that you want.**

After the job is printed, it is deleted from the Integrated Fiery Color Server.

Installing fonts on Mac OS X computers

The Fonts on the User Software DVD include screen fonts that correspond to the 136 built-in PostScript and TrueType printer fonts on the Integrated Fiery Color Server. To be available to applications, the screen fonts must be installed on Mac OS X.

TO INSTALL SCREEN FONTS ON MAC OS X v10.3.9 AND v10.4.x**1 Insert the User Software DVD into the DVD drive of the Mac OS X computer.****2 Start the Font Book application in Applications/Font Book.****3 Choose Add Fonts from the File menu.****4 Choose User Software/OSX/Fonts/Albertus MT.****5 Choose Select All from the Edit menu.****6 Choose one of the following from Install fonts:**

- For your personal use: for your use only
- For shared use: for all users of this computer
- For Classic: for Mac OS X Classic

NOTE: For Mac OS X v10.4, you must select User, Computer, or Classic Mac OS in Preferences/Default Install Location of Font Book beforehand.

7 Click Open.**8 Exit the Font Book application.**

PRINTING FROM MAC OS X

Print to the Integrated Fiery Color Server as you would print to any other printer from a Mac OS X application. Select a printer and print the file from within the application. In addition to this method, you can download files to the Integrated Fiery Color Server using Hot Folders (see [Utilities](#)) or the Docs tab in WebTools (see [Utilities](#)), and print documents using Command WorkStation (see [Utilities](#)).

Printing from applications with Mac OS X

After you install the Integrated Fiery Color Server printer description files using the OSX Installer, you can print directly from most Mac OS X applications. For more information about installing printer description files with the OSX Installer see [page 8](#).

To achieve optimal printing results from specific applications, see [Color Printing](#) and [Fiery Color Reference](#).

Setting print options and printing from Mac OS X

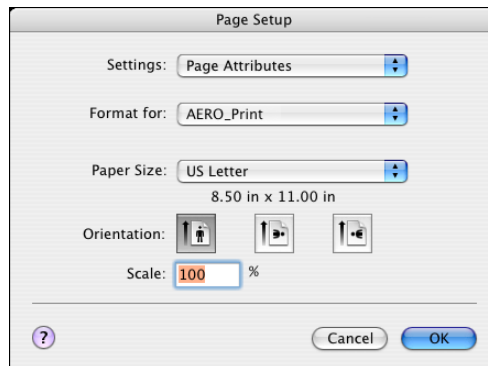
In Mac OS X applications, print options are set from the Page Setup dialog box and the Print dialog box. For information about specific print options, see [Print Options](#).

NOTE: Some default print options are set by your administrator during Setup. For information about the current server default settings, contact your administrator or the operator.

NOTE: The following procedure shows Mac OS X v10.4 illustrations.

TO SET PRINT OPTIONS AND PRINT FROM MAC OS X

- 1 **Open a file and choose Page Setup from the application's File menu.**
- 2 **For Settings, choose Page Attributes. For Format for, choose the Integrated Fiery Color Server.**

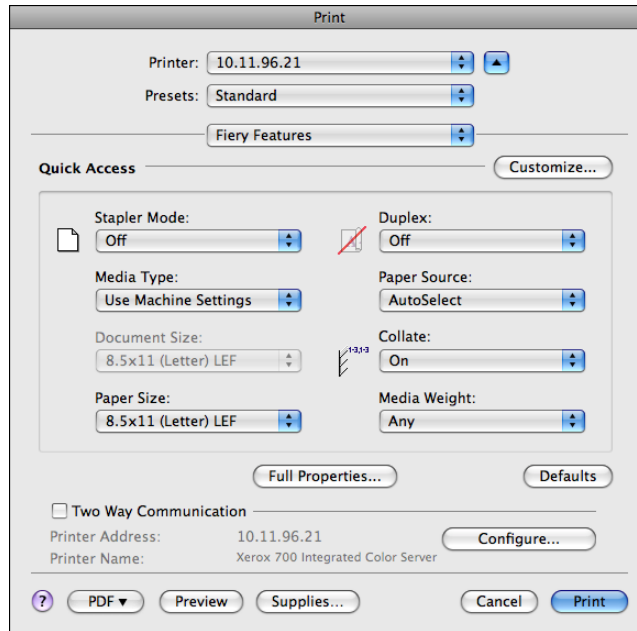


The Paper Size option in the Page Setup dialog box is the same as the Document Size print option in the Fiery Features Media tab. Document Size is the page size defined in your original application's Print setup (or Page Setup) dialog box.

The Paper Size print option in the Fiery Features Media tab is the size of the actual sheet of paper on which your job will print. The default value of the actual paper size is the paper size set in the Page Setup dialog box.

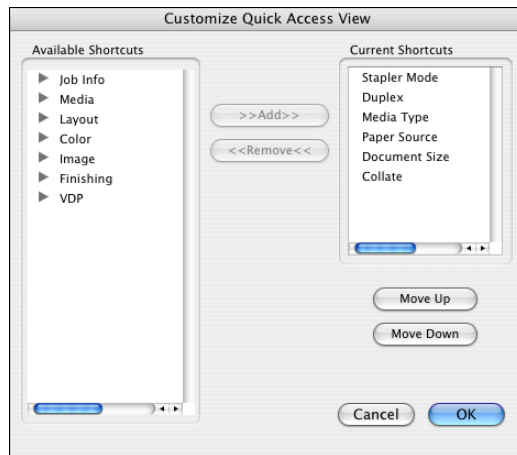
- 3 **Select the Page settings for your print job.**
- 4 **Click OK.**
- 5 **Choose Print from the application's File menu.**
- 6 **Choose the Integrated Fiery Color Server as your printer.**

7 Choose Fiery Features from the drop-down list.



NOTE: For information about Two-Way Communication, see [page 36](#).

8 Click Customize to specify the options shown in the Basic window.



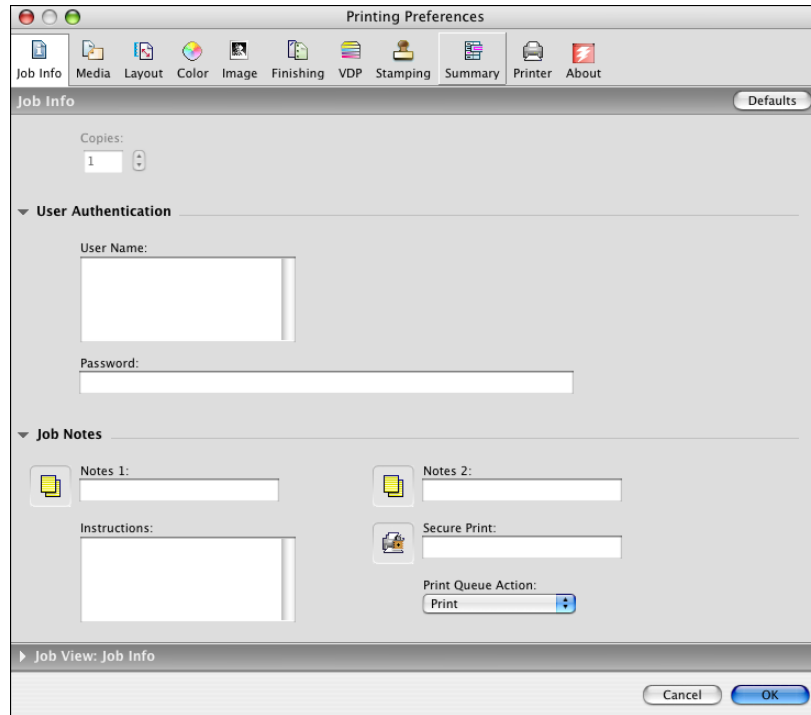
You can select a shortcut from the Available Shortcuts list and add it to the Current Shortcuts list, as well as removing a shortcut from the Current Shortcuts list.

You can specify how the shortcuts are displayed on the Basic window by selecting a shortcut in the Current Shortcuts list, and then clicking Move Up or Move Down.

Click OK to save your changes.

9 Click Full Properties in the Basic window.

The Job Info tab is displayed.



10 Type your user name or domain\user name in the User Name field if User Authentication is enabled on the Integrated Fiery Color Server.

11 Type your local password or domain password in the Password field if User Authentication is enabled on the Integrated Fiery Color Server.

12 Type information in the Notes 1 and Notes 2 fields under Job Notes.

Enter user and job identification information for managing purposes, or other information that is required at your site.

The information you type in the Notes fields can be viewed and edited by the operator in Command WorkStation and also appears in the Job Log.

13 Type instructions to the operator about the job in the Instructions field.

These instructions can be displayed in Command WorkStation but do not appear in the Job Log. These instructions can be edited by the operator.

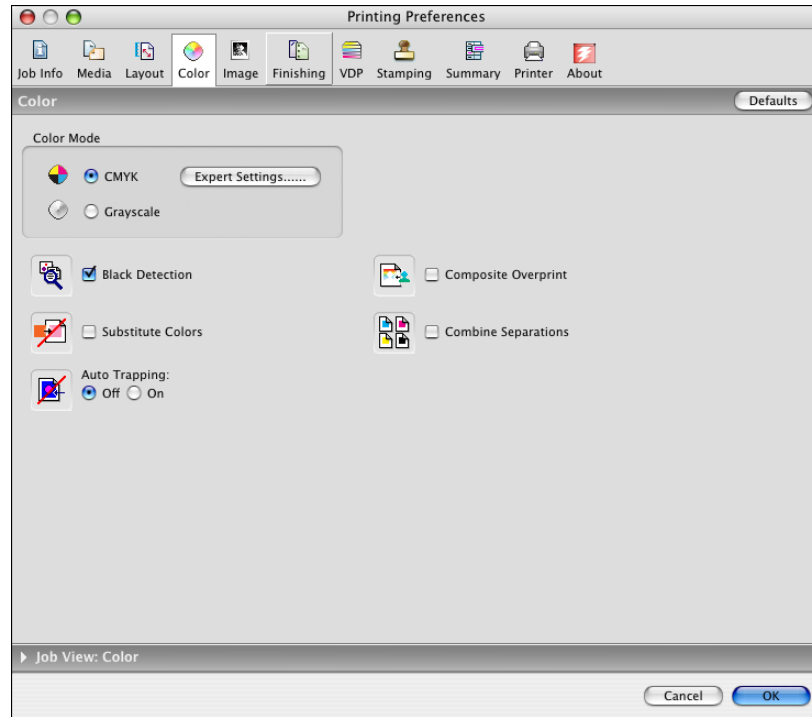
14 Type a password in the Secure Print field if you are sending a secure print job.

For more information, see the documentation that accompanies your digital press.

15 Type values for the other fields as needed.

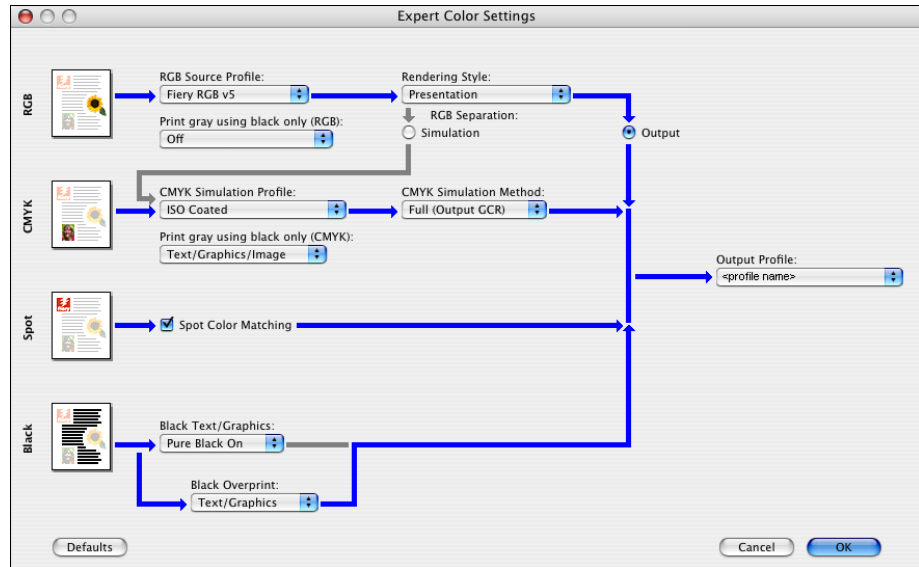
For information about these fields, see [Print Options](#).

- 16 Click the Color tab.
- 17 Specify color print options for the job.



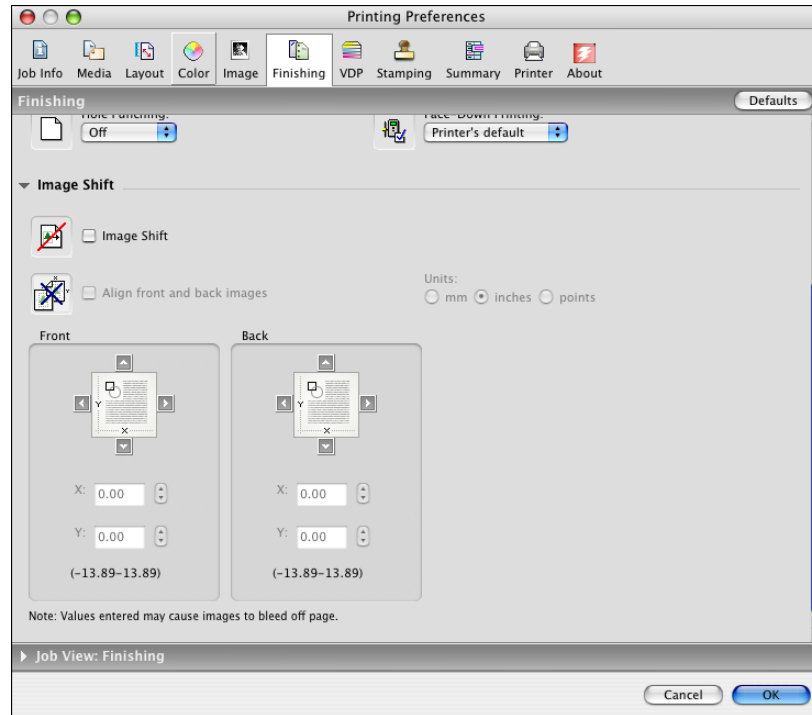
- 18 To use advanced color management features, such as Rendering Style, click Expert Settings.
The Expert Color Settings dialog box appears.

NOTE: To display the ColorWise settings from the Integrated Fiery Color Server in this dialog box, make sure that Two-Way Communication is enabled. To enable Two-Way Communication, see [page 36](#).



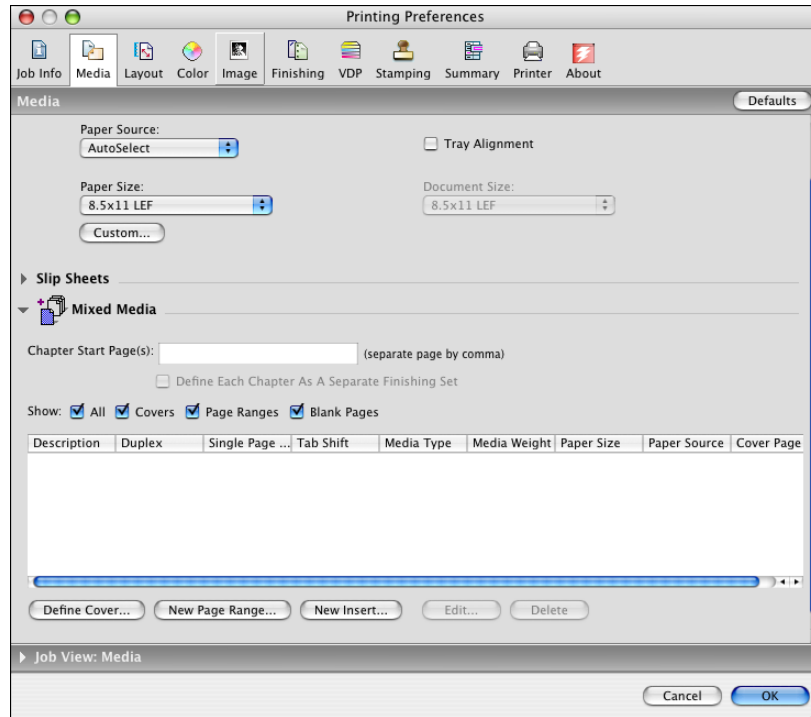
19 Specify the color settings for the print job and click OK.

- 20 To shift the position of the print image on the page, click the Finishing tab and choose Image Shift to specify the shift distances.

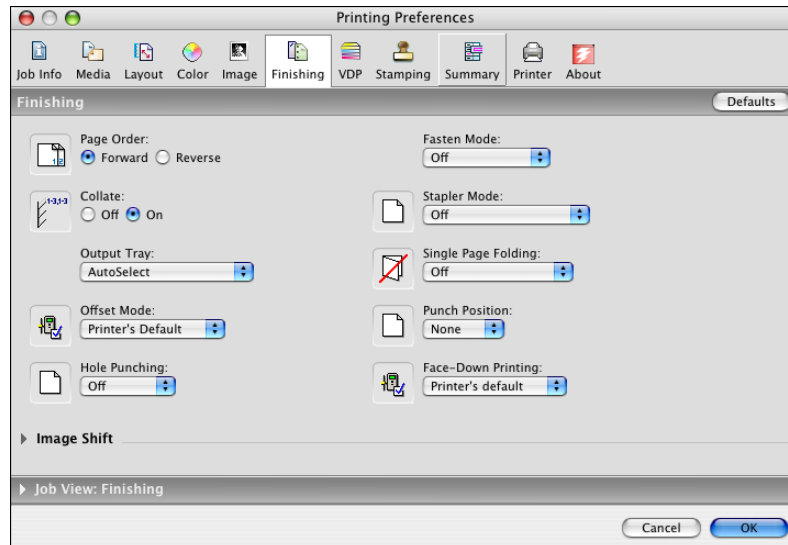


You might need to shift the print image to allow for binding, for example.

21 To define Mixed Media, click the Media tab and choose Mixed Media.



22 Choose other printer-specific options.



These print options are specific to the Integrated Fiery Color Server and the digital press. You must choose each Feature Set to see all the options. These options override settings in Integrated Fiery Color Server Printer Setup but can be changed from Command WorkStation.

If you choose Printer's default, the job prints according to the settings specified in Setup.

For more information about these options and overrides, see [Print Options](#).

Some print options that are selectable from an application or are provided by Mac OS are similar to the print options that are specific to the Integrated Fiery Color Server and the digital press. In these cases, use the print options specific to the Integrated Fiery Color Server and the digital press that appear in the Fiery Features menu. The application may not set up the file properly for printing on the Integrated Fiery Color Server, resulting in unexpected finishing, printing errors, or longer processing time. When you print to your selected digital press, make sure to clear the Collated check box in the Copies & Pages menu of the printer driver.

If you select an invalid setting or combination of settings when printing a document, no error message appears. For example, you may be able to select duplex printing on transparency media. Invalid settings and combinations are ignored by the Integrated Fiery Color Server.

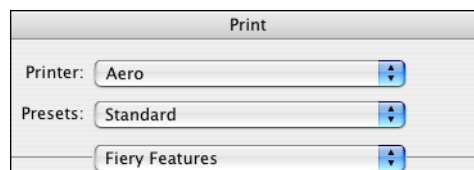
23 Click Print.

Using presets

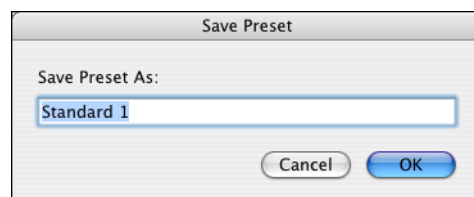
Saving print option settings to your hard disk enables you to load specifically configured settings for a particular job as a preset.

TO CREATE A PRESET

- 1 Open a file and choose Print from the application's File menu.
- 2 Choose Fiery Features from the drop-down list.



- 3 Click Full Properties in the Basic window to adjust the print settings as desired.
- 4 Choose Save As from the Presets drop-down list.



- 5 Enter a descriptive name for the preset (a maximum of 32 characters) and click OK.

The preset is added to the list of available presets.

The presets are available any time you access the Print dialog box. They remain on your local disk until you delete them.

- 6 Choose Save from the Presets drop-down list if you make changes to the print settings for the specified Preset.

TO CHOOSE A PRESET FOR PRINT JOBS

- 1 Open a file and choose Print from the application's File menu.
- 2 Choose a preset from the Presets drop-down list.

The preset is used until you select another one.

NOTE: When you select a preset from an application's Print dialog box, the preset is used only for the current application session.

TO DELETE PRESETS

- 1 Open a file and choose Print from the application's File menu.
- 2 Choose a preset from the Presets drop-down list.
- 3 Choose Delete from the Presets drop-down list.

TO RENAME PRESETS

- 1 Open a file and choose Print from the application's File menu.
- 2 Choose a preset from the Presets drop-down list.
- 3 Choose Rename from the Presets drop-down list.
- 4 Enter a descriptive name for the preset (a maximum of 32 characters) and click OK.

The renamed preset is added to the list of available presets.

The presets are available any time you access the Print dialog box. They remain on your local disk until you delete them.

TO REVERT TO THE DEFAULT PRESET

- 1 Open a file and choose Print from the application's File menu.
- 2 Choose Standard from the Presets drop-down list to revert to the default preset.

Retrieving secure print jobs on the digital press control panel

The Secure Print feature allows you to print sensitive or confidential jobs only when you are present at the digital press. Before you send a job to print, you first type a password into the Secure Print field in the printer driver. To print your Secure Print job, you re-type the password at the digital press control panel as described in the following procedures.

TO SEND A SECURE PRINT JOB

- 1 Choose Print from the application's File menu.
- 2 Choose the Integrated Fiery Color Server as your printer.
- 3 Choose Fiery Features from the drop-down list.
- 4 Click Full Properties in the Basic window.
- 5 Click the Job Info tab.
- 6 Type a password in the Secure Print field.

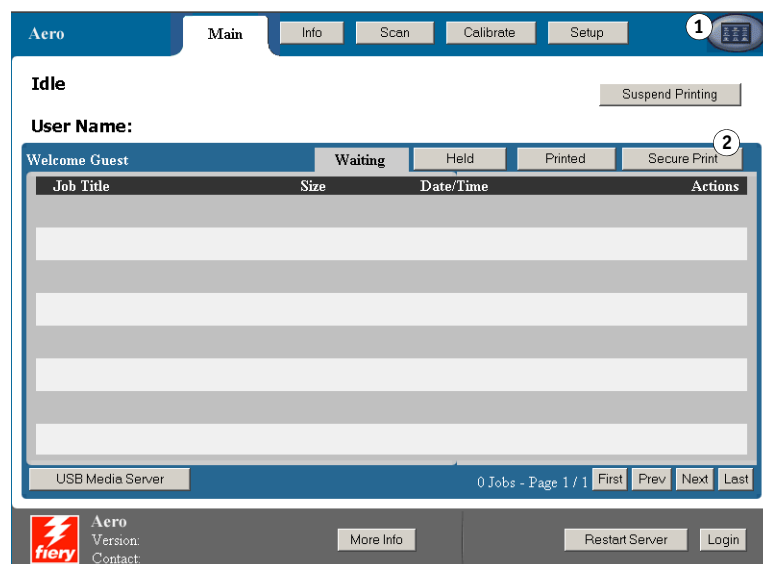
NOTE: The password is limited to alphanumeric characters (do not use symbols).

- 7 Type values for the other fields as needed and then send your job to the Integrated Fiery Color Server.
- 8 Click OK.
- 9 Click OK.

TO RETRIEVE A SECURE PRINT JOB

- 1 At the digital press control panel, press the All Services button.
- 2 Select Web Applications.

- 1 All Services button
- 2 Secure Print



3 Select Secure Print from the Main page.

The Secure Print password window appears.

4 Type the same password you entered in the Secure Print field of the printer driver.

The jobs that match the password are displayed in the Login window.

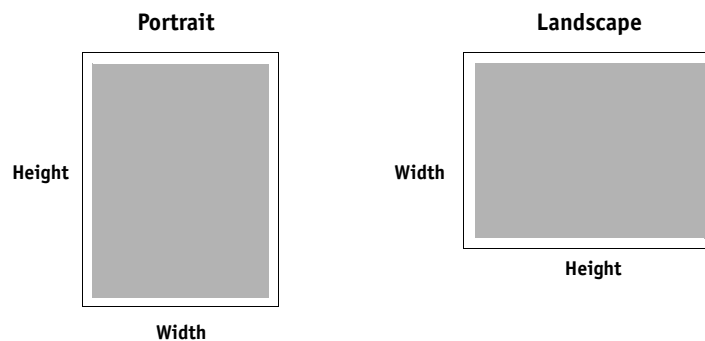
5 Select your print job and choose either Print or Delete.

The screen returns to the Main page after 45 seconds without activity. After the screen returns to the Main page, you must re-type the Secure Print password.

6 Select the desired number of copies and select Print, Print and Hold, or Cancel.

Defining and printing custom page sizes

With custom page sizes, you define the dimensions of a printed page. After you define a custom page size, you can use it from within an application without redefining it each time you print. When you create custom page sizes, specify Width dimensions to correspond with the shorter side of your job and specify Height dimensions to correspond with the longer side of your job. Set custom page sizes in this way, regardless of the orientation settings in the application.



NOTE: Custom page sizes are not supported with Imposition jobs.

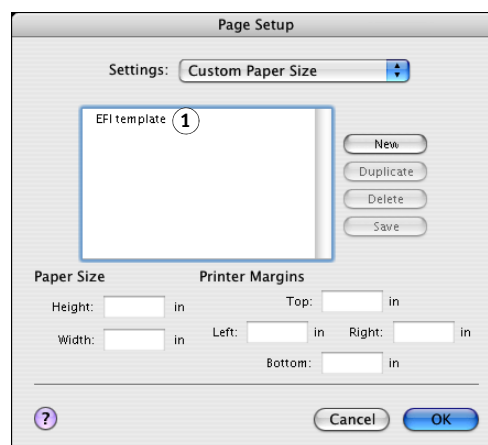
Defining and editing custom page sizes in Page Setup

With custom page sizes, you define page dimensions and margins. Use Page Setup to define a custom page size. When you define or edit a custom page size, use the following procedures.

TO DEFINE A CUSTOM PAGE SIZE ON MAC OS X v10.3.9

- 1 Choose Page Setup from the application's File menu.
- 2 Choose Custom Paper Size from the Settings menu.

1 Custom page names



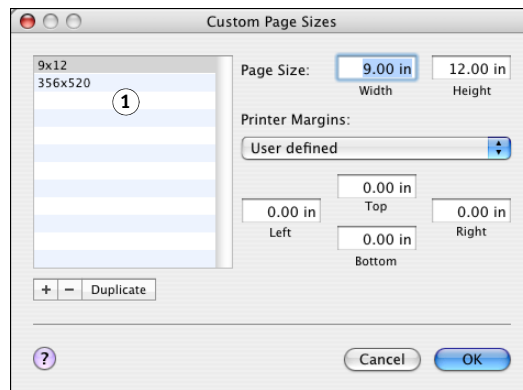
- 3 Click New and type a name for the custom page size.
- 4 Enter the page dimensions and margins.
- 5 Click Save.
- 6 Click OK to exit.

The custom page size you defined is added to the list of Paper Size selections in the Page Setup dialog box.

TO DEFINE A CUSTOM PAGE SIZE ON MAC OS X V10.4

- 1 Choose Page Setup from the application's File menu.
- 2 Choose Manage Custom Sizes from the Page Size menu.

1 Custom page names




- 3 Click the plus sign (+) to add a new custom page size.
- 4 Double-click Untitled to type a name for the custom page size.
- 5 Enter the page dimensions and margins.
- 6 Click OK to exit.

The custom page size you defined is added to the list of Page Size selections in the Page Setup dialog box.

TO EDIT A SAVED CUSTOM PAGE SIZE

- 1 Choose Page Setup from the application's File menu.
- 2 Choose Custom Paper Size from the Settings menu.
For Mac OS X v10.4, choose Manage Custom Sizes from the Page Size menu.
- 3 Select the Custom Paper Size name.
- 4 Edit the page dimensions and margins.
- 5 Replace the existing Custom Page name by clicking it.
For Mac OS X v10.4, proceed to [step 7](#).
- 6 Click Save.
- 7 Click OK to exit.

TO DELETE A CUSTOM PAGE SIZE

- 1 Choose Page Setup from the application's File menu.
- 2 Choose Custom Paper Size from the Settings menu.
For Mac OS X v10.4, choose Manage Custom Sizes from the Page Size menu.
- 3 Select the Custom Paper Size name.
- 4 Click Delete.
For Mac OS X v10.4, click the minus sign () to delete a custom page size.
- 5 Click OK to exit.

TO MAKE A COPY OF THE CUSTOM PAGE SIZE

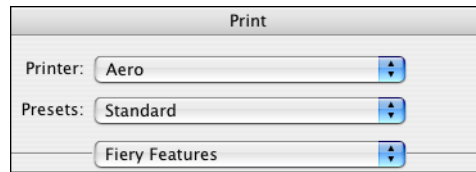
- 1 Choose Page Setup from the application's File menu.
- 2 Choose Custom Paper Size from the Settings menu.
For Mac OS X v10.4, choose Manage Custom Sizes from the Page Size menu.
- 3 Select the Custom Paper Size name.
- 4 Click Duplicate.
- 5 Click OK to exit.

Defining and printing custom page sizes with the printer driver

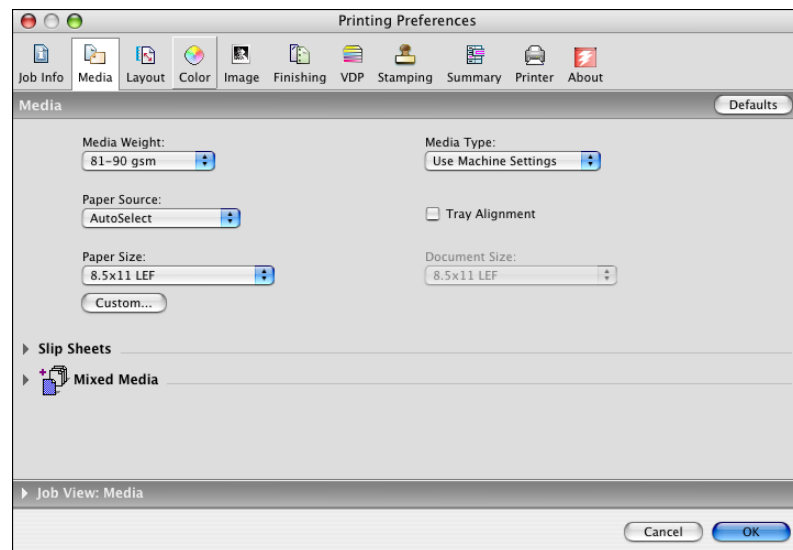
When you define or edit a custom page size, or print your job on a custom page size in the printer driver, use the following procedures.

TO DEFINE A CUSTOM PAGE SIZE WITH THE MAC OS X PRINTER DRIVER

- 1 Choose Print from the application's File menu.
- 2 Choose Fiery Features from the drop-down list.



- 3 Click Full Properties in the Basic window.
- 4 Click the Media icon.

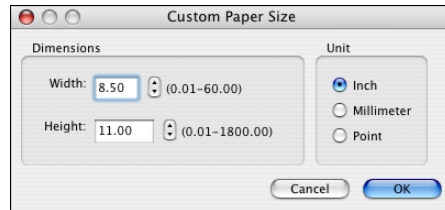


NOTE: Document Size is the page size defined in your original application's Print setup (or Page Setup) dialog box. Paper size is the size of the actual sheet of paper on which your job will print.

In cases when printing one document page per sheet of paper, Document size is usually the same as the Paper size. However, it may differ when printing booklets or imposing multiple document pages on a single sheet.

5 Click Custom.

The Custom Paper Size dialog box appears.

**6 Specify options to define the custom page size.**

Dimensions: Specify the width and height of the print job.

Unit: Select a unit of measurement for the print job.

7 Click OK to close the Custom Paper Size dialog box.**8 Click OK to close the Printing Preferences dialog box.**

You can now specify the custom page size from an application.

TO EDIT A CUSTOM PAGE SIZE WITH THE MAC OS X PRINTER DRIVER

- 1 Choose Print from the application's File menu.**
- 2 Choose Fiery Features from the drop-down list.**
- 3 Click Full Properties in the Basic window.**
- 4 Click the Media icon.**
- 5 Select the custom page size from the Paper Size list.**
- 6 Click Custom.**

The Custom Paper Size dialog box appears.

- 7 Edit the settings, as described on [page 35](#), and click OK.**

TO PRINT A CUSTOM PAGE SIZE WITH THE MAC OS X PRINTER DRIVER

- 1 Choose Print from the application's File menu.**
- 2 Choose Fiery Features from the drop-down list.**
- 3 Click Full Properties in the Basic window.**
- 4 Click the Media icon.**
- 5 From the Paper Source menu, choose the paper tray that contains the custom-size paper for the job.**

The Paper Source selection is valid for the current job only.

- 6 Select the custom page size from the Paper Size list.**

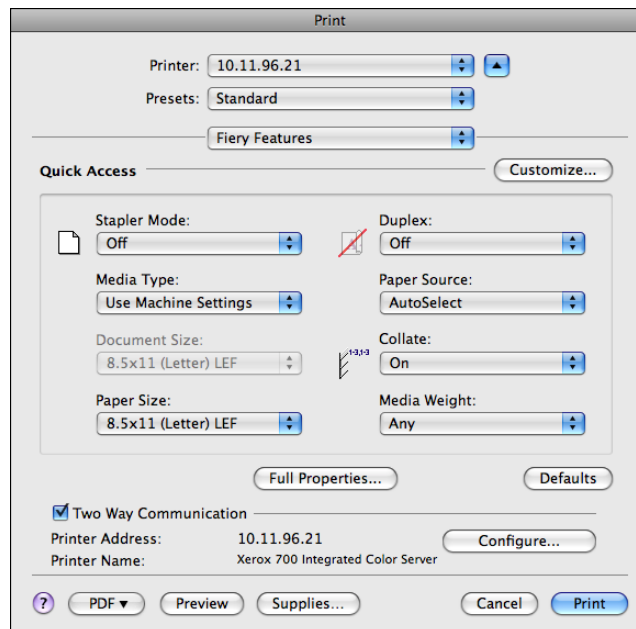
- 7 Click the Layout icon.
- 8 Select a setting from Orientation, according to the way the custom size paper is loaded.
- 9 Click OK, and then click Print to print the job.

Enabling Two-Way Communication

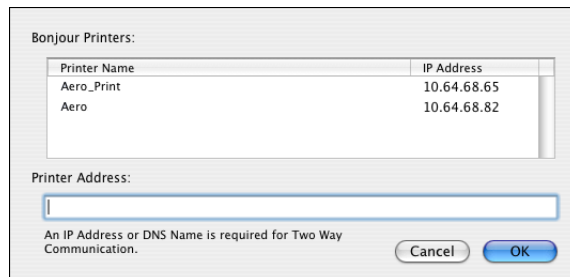
If you enabled a TCP/IP network, you can retrieve digital press status and ColorWise settings from the Integrated Fiery Color Server and display them in the printer driver using the Two-Way Communication feature. The digital press status includes the current paper and toner levels. You can set the ColorWise settings on the Integrated Fiery Color Server using ColorWise Pro Tools. For more information about ColorWise print options, see [Color Printing](#).

TO ENABLE TWO-WAY COMMUNICATION

- 1 Open a file and choose Print from the application's File menu.
- 2 Choose the Integrated Fiery Color Server as your printer.
- 3 Choose Fiery Features from the drop-down list and select the Two-Way communication option.

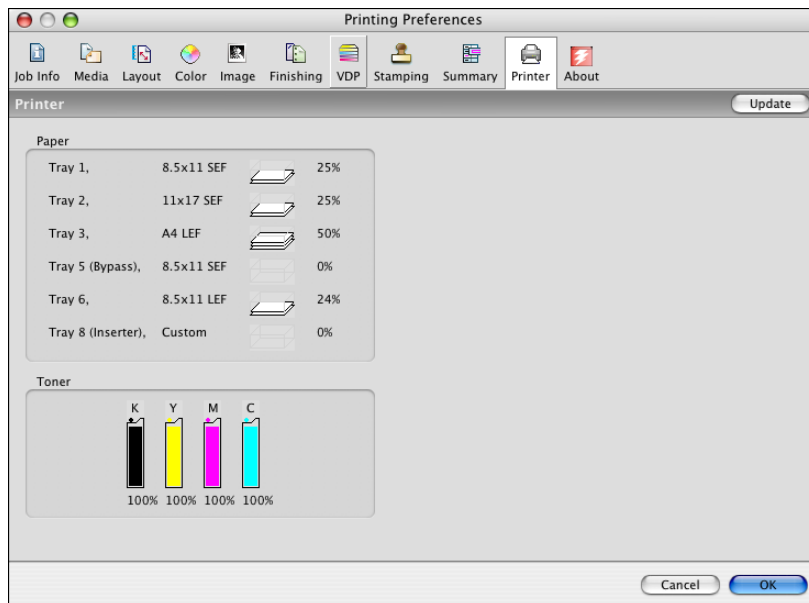


A dialog box appears requesting an IP address or DNS name for Two-Way Communication. If Bonjour is enabled, the Bonjour printers are listed automatically.



NOTE: If the dialog box does not appear automatically, click Configure.

- 4 **Type the Integrated Fiery Color Server IP address or DNS name in the Printer Address field or select a Bonjour printer from the list in the dialog box.**
- 5 **Click OK.**
- 6 **Click the Printer tab to monitor the status of the digital press.**
- 7 **To update the digital press status in the Printer window, click Update.**



- **Paper:** Displays the tray name and the amount of paper remaining in the specified tray as a percentage.
- **Toner:** Displays amount of remaining toner as a percentage. The toner amount displayed is roughly calculated and may not match the exact amount of toner remaining.

INDEX

A

AppleTalk connection, in Printer Setup Utility 9

B

Bonjour connection type 11

C

ColorWise options, updating automatically 36

Command WorkStation 19

custom page size, *see* defining a custom page size,
printing a custom page size

D

default print options 19

defining a custom page size

in Page Setup 31

in the printer driver 34

digital press status 36

Docs tab in WebTools 19

Downloads tab in WebTools 7

E

Expert Color Settings 23

F

fonts, installing on Mac OS X 18

FTP Printing 17

I

installable options

specifying in Mac OS X 15

installing

printer driver for Mac OS X 8

Instructions field 22

IP Printing, in Printer Setup Utility 10, 14

M

Mac OS X

print options 19

printer driver installation 8

printer driver setup 9

N

Notes field 22

O

OSX Installer 8

P

Page Setup dialog box 19

PostScript fonts 6

PostScript Printer Description file, *see* PPD

PPD

overview 6

presets

choosing for a print job 28

creating 27

Print dialog box 19

print options

Mac OS X 19

printer driver

downloading 7

installation, Mac OS X 8

setup, Mac OS X 9

Printer Setup Utility 8, 9

Bonjour connection type 11

Printer's default 27

printing a custom page size 35

S

screen fonts, installing 18

secure print jobs

sending and receiving 29

T

Two-Way Communication 36

U

USB device 16

W

WebTools

Docs tab 19

Downloads tab 7

