

Enabling Chinese Characters for the Xerox CX Print Server, Powered by Creo, for the Xerox 700 Digital Color Press

Problem

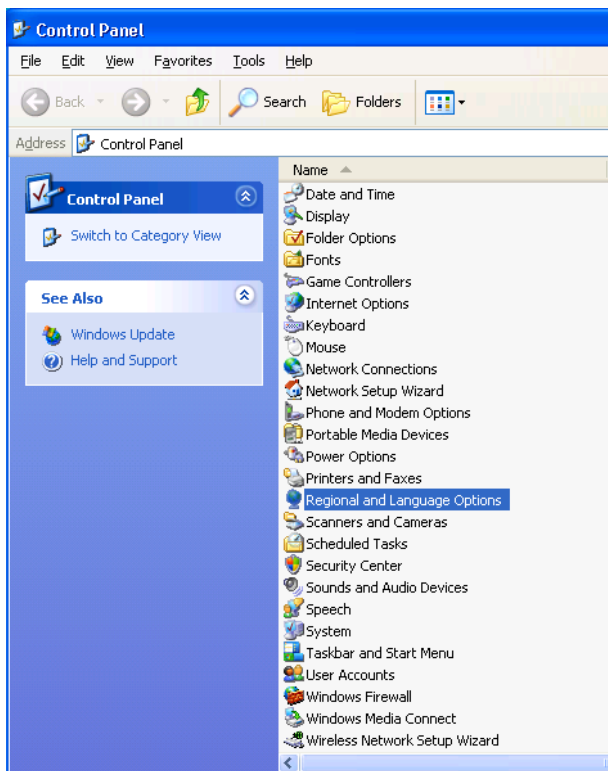
Files containing Chinese characters in the filename appear as boxes in the CX print server user interface.

Solution

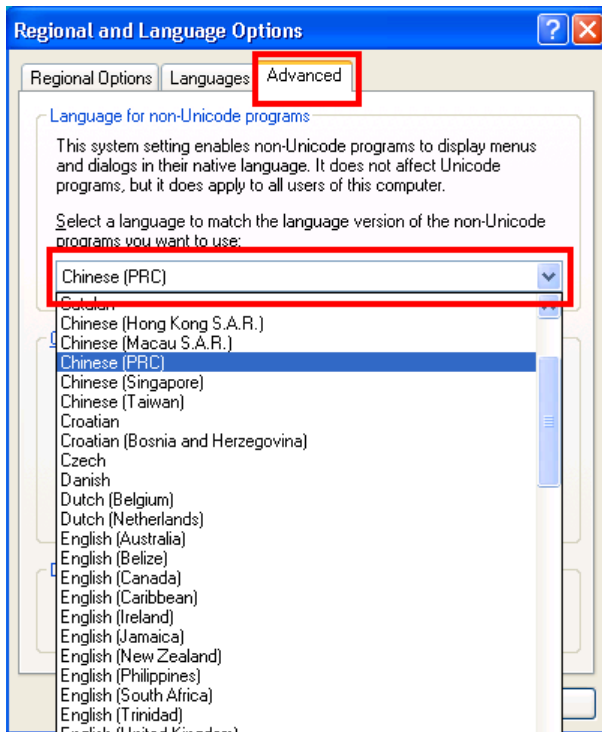
Change the default **Regional and Language Options** for non-Unicode programs to Chinese PRC.

Changing the Regional and Language Options

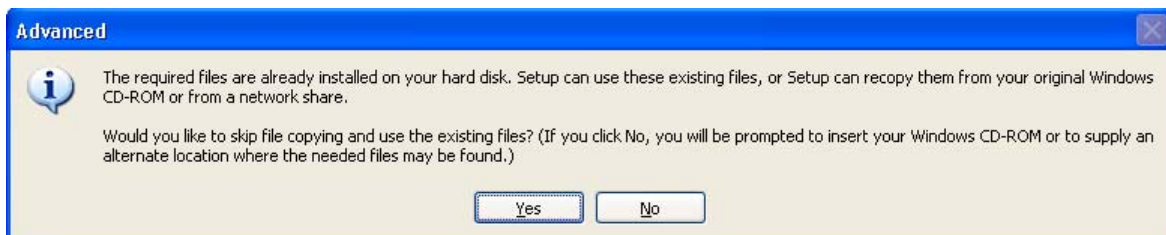
1. From the Start menu, select **Settings > Control Panel**.
2. In the Control Panel window, double-click **Regional and Language Options**.



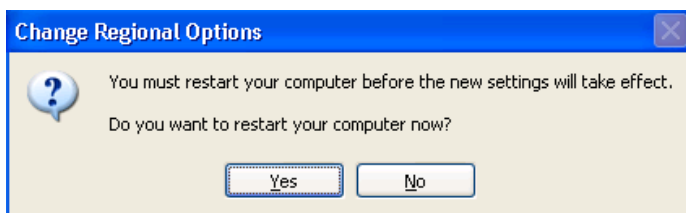
3. In the Regional and Language Options dialog box, select the **Advanced** tab.
4. In the **Language for non-Unicode programs** area, select **Chinese (PRC)** from the list.
5. Click **Apply**.



6. Click **Yes**, when prompted to enable using the existing files.



7. Click **Yes**, to restart the CX print server.



About Print On-Demand Solutions Group

The Print On-Demand Solutions Group develops and supports high-performance CREO Color Servers and key workflow solutions for a range of digital production printers and presses. It also develops advanced on-demand applications to enable the creation of personalized direct mail, targeted catalogs and other powerful one-to-one marketing communications tools.

This independent unit of Kodak's Graphic Communications Group will continue to help its customers leverage their investment in digital printing.

For more information about CREO Color Servers, visit www.creoservers.com

© Kodak, 2009. All rights reserved. Creo is a trademark of Eastman Kodak Company. Adobe, Acrobat, Adobe Illustrator, Distiller, Photoshop, PostScript, and PageMaker are trademarks of Adobe Systems Incorporated. Apple, AppleShare, AppleTalk, iMac, ImageWriter, LaserWriter, Mac OS, Power Macintosh, and TrueType are registered trademarks of Apple Computer, Inc. Macintosh is a trademark of Apple Computer, Inc., registered in the U.S.A. and other countries. PANTONE, Hexachrome, PANTONE Goe, PANTONE Hexachrome, and PANTONE MATCHING SYSTEM are the property of Pantone, Inc. PEARL, PEARLsetter, PEARLhdp, PEARLdry, and PEARLgold are registered trademarks of Presstek, Inc. Technical data subject to change without notice.