



Setup Guide

Fiery Express Driver for Mac OS X 10.7



TABLE OF CONTENTS

1 INTRODUCTION 3

 1.1 Overview 3

 1.2 Features Supported..... 3

2 INSTALLING THE FIERY EXPRESS DRIVER SOFTWARE..... 6

 2.1 Prerequisites 6

 2.2 Languages Supported 6

 2.3 Installing Driver Software..... 6

 2.4 Adding Printers 9

3 KNOWN ISSUES..... 10

1 INTRODUCTION

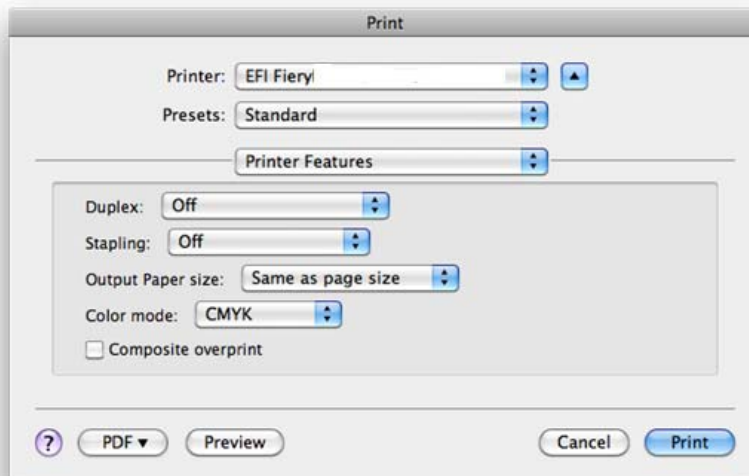
1.1 Overview

This document describes EFI's Fiery Express Driver. The Fiery Express Driver is a universal driver that can be used with any Fiery. The driver will provide basic feature support for Fiery printing.

The Fiery Express Driver is a solution that can be installed on any Macintosh using Mac OS X 10.7 to provide basic feature support for Fiery printing. Macintosh OS X 10.7 users who want to print using Fiery features should print to the Fiery "Held" queue then use Command WorkStation 5.x to edit the Job Properties.

1.2 Features Supported

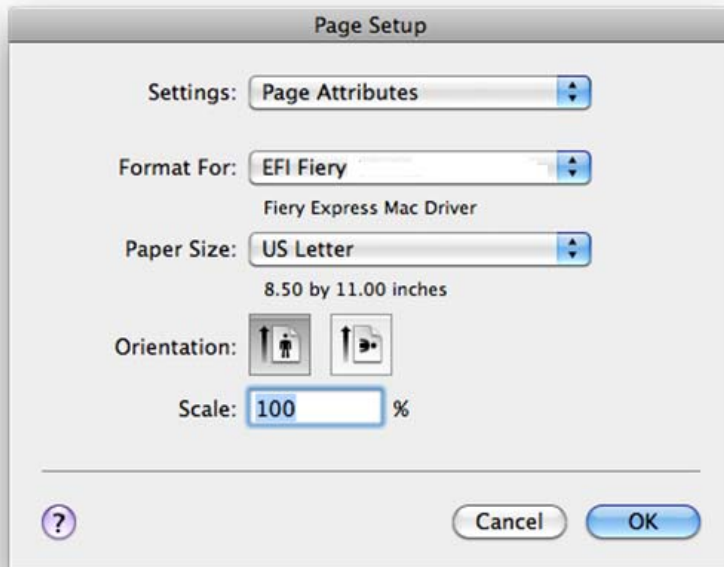
The Fiery Express driver will support the following features for Fiery printing:



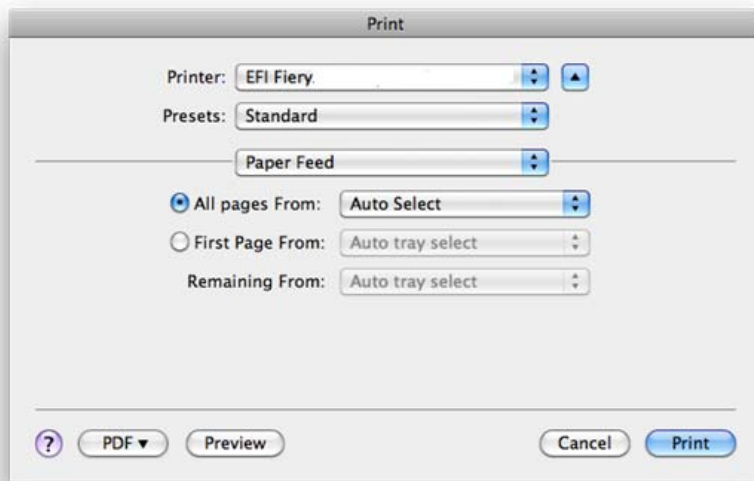
- Duplex – allows the automatic printing of a sheet of paper on both sides;
- Staple – turns stapling on/off;

- Output Paper Size – allows selection of different paper sizes from a list. The supported paper sizes are:
 - Letter – 8.5x11
 - Legal – 8.5x14
 - Tabloid – 11x17
 - 12x18
 - 13x19
 - A5
 - A4
 - A3
 - SRA3
- Color Mode - The different native color models supported for printing are:
 - CMY—Cyan-magenta-yellow color model.
 - CMYK—Cyan-magenta-yellow-black color model.
 - RGB—Red-green-blue color model.
 - Gray—Gray-scale color model.
- Composite Overprint - All colors used for data are overlaid and printed on one plate so you can check the finished result without separating the colors.

“Document Size” will be displayed from the “Paper Size” option in the “Page Setup” dialog:



“Input Slot” will be displayed from the “Paper Feed” option in the “Print” dialog:



The “Imageable Area”, total page size less any unprintable border used by a printer, will always be full-bleed for the selected media.

2 INSTALLING THE FIERY EXPRESS DRIVER SOFTWARE

The Fiery Express Driver provides basic feature support for Fiery printing using Mac OS X 10.7 clients.

2.1 Prerequisites

- You must have Mac OS X 10.5, or above, installed to use the Fiery Express Driver.
- You must know the user authentication password for your local machine. The password is required during the installation process.

IMPORTANT: The PPDs installed by the **FieryExpressMacDriver.pkg** are the only supported PPDs for use with the Fiery Express Driver. Printer specific PPDs are not supported.

Macintosh OS X 10.7 users who want to print using Fiery features should print to the Fiery “Held” queue then use Command WorkStation 5.x to edit the Job Properties.

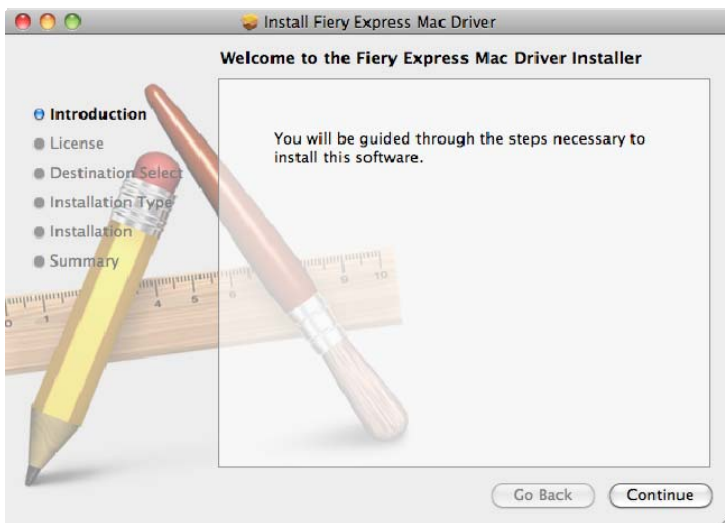
2.2 Languages Supported

The Fiery Express Driver provides support for English, French, Italian, German, Spanish, Japanese, Dutch, Brazilian Portuguese, Simplified Chinese, Swedish, Finnish, Danish, Norwegian, Turkish and Russian.

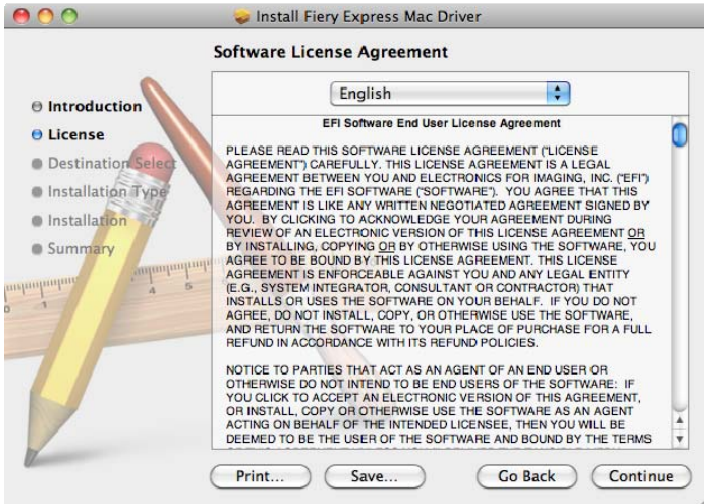
2.3 Installing Driver Software

Installing the Fiery Express Driver is a two-step process. First, the Fiery Express Driver files are installed to your hard disk. Second, the printer must be selected before printing .

Double-clicking on the **FieryExpressMacDriver.pkg** will begin the installation process.



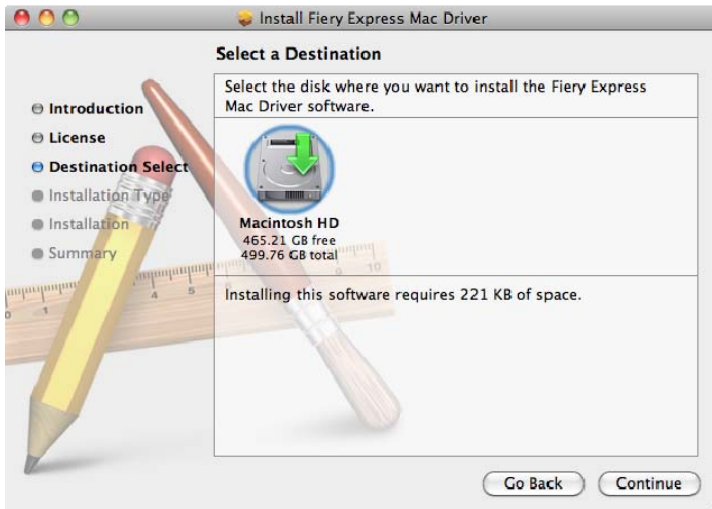
To continue the installation process, click “Continue”.



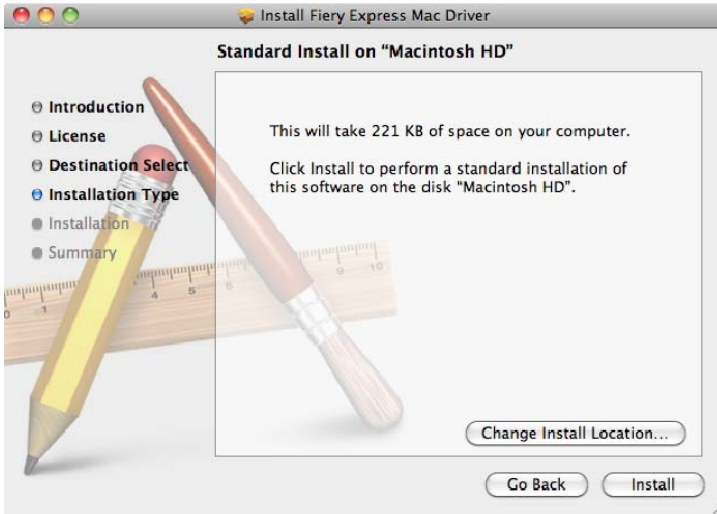
To install the Fiery Express Driver you must agree to the Terms as described in the License Agreement as described in the “Software License Agreement” dialog.

If you do NOT agree with the Terms as described in the Software License Agreement the installation process will be aborted.

After agreeing to the Software License Agreement terms, begin the Fiery Express Driver installation process by selecting the destination:

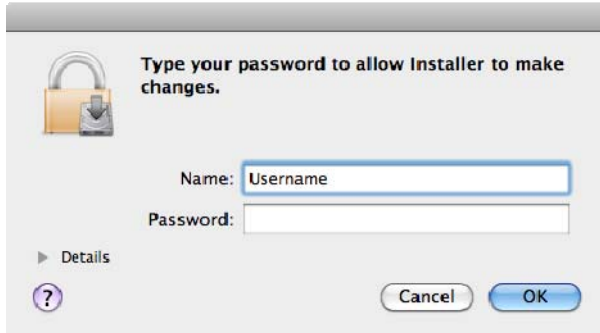


Enter the directory location if you want change the default installation directory

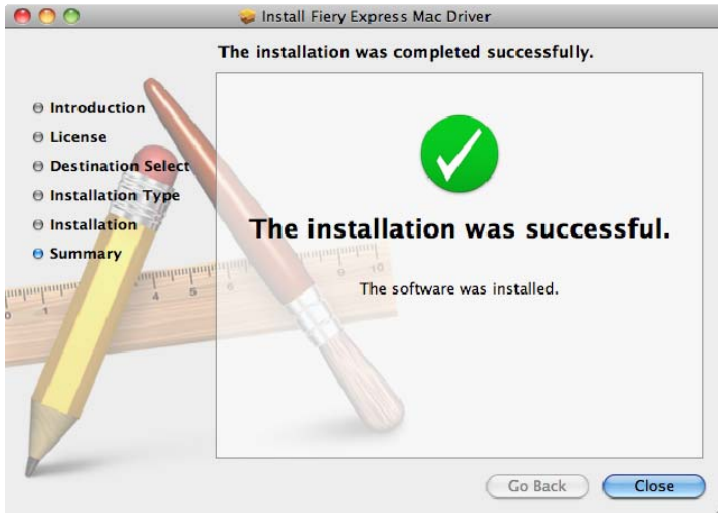


Select “Install” to continue the installation.

Enter your user authentication.



After successful user authentication the installation will continue. A successful installation will display the following dialog:



2.4 Adding Printers

After installing the Fiery Express Driver, a printer must be selected.

To select a printer:

- Go to the Apple menu to select “System Preferences”;
- Select “Print&Fax” in the “Hardware” category;
- Click on “+” and select the desired printer from the available list
- After selecting the printer, add it using one of the following methods:

Method 1:

- Select the “Other” option in the “Print Using” dialog box;
- Locate your printer’s PostScript Printer Description (PPD) file in the /Library/Printers/PPDs/Contents/Resources/<language>.lproj folder; and
- Click “Add” to complete the “Add Printer” procedure.

Method 2:

- Select the “Select Printer Software” option in “Print Using” dialog box;
- Select “EFI Fiery Express Mac Driver”; and
- Click “Add” to complete the “Add Printer” procedure.

3 KNOWN ISSUES

The following are known issues when using the Fiery Express Driver:

- The Fiery Express Driver will not provide access to Fiery features. The PPDs installed by the **FieryExpressMacDriver.pkg** are the only supported PPDs for use with the Fiery Express Driver. OEM-specific PPDs are not supported.
- Fiery Software Uninstaller for Macintosh does not recognize the "Fiery Express Driver".
- QuarkXPress 8.0 crashes when launching the "Print Dialog" using the Fiery Express Driver. See "FAQs for QuarkXPress 8 & 9" <http://forums.quark.com/t/21811.aspx> for additional information regarding this issue.

This driver is intended to provide users with basic print capabilities only. For access to Fiery features you may use Command WorkStation 5.x which is available as a free download on www.efi.com.