



Splash RPX-iii Xerox 700 Digital Color Press

Configuration Guide



© 2008 Electronics for Imaging, Inc. The information in this publication is covered under [Legal Notices](#) for this product.

45073073
7 May 2008

CONTENTS

INTRODUCTION	7
Terminology and conventions	7
About this document	7
NETWORK SETUP	8
Configuring the EFI Splash RPX-iii for AppleTalk printing	8
Configuring the EFI Splash RPX-iii for TCP/IP and LPR printing	9
Connecting the EFI Splash RPX-iii to the TCP/IP network	10
Configuring the EFI Splash RPX-iii for the TCP/IP network	10
Enabling TCP/IP printing from the EFI Splash RPX-iii	12
Configuring Windows 2000/XP/Server 2003/Vista for TCP/IP printing	12
Configuring the EFI Splash RPX-iii for the IPv6 network and 802.1x	13
Configuring the EFI Splash RPX-iii for NDPS Printing	14
Configuring a Novell NetWare print queue	20
Connecting to a Fiery	21
Connecting to a Fiery	21
Changing the Fiery connection	22
SETTING DEFAULT PREFERENCES	23
Setting default job settings	23
Editing default job settings	23

Setting up EFI Splash RPX-iii preferences	24
Setting Server preferences	24
Setting Page preferences	27
Setting Network preferences	30
Setting Color preferences	31
Setting Appearance preferences	32
Setting Button Bar preferences	32
Setting Jobs preferences	32
Setting Job Log preferences and reading a log file	32

USING THE WEB QUEUE MANAGER 36

Preparing the Web Queue Manager	36
Configuring the Web Queue Manager	36
Set the IP Address for the EFI Splash RPX-iii	37
Enabling Web Access	37
Enabling Web Sharing	37
Controlling Web Queue Management privileges	39

ADMINISTERING THE EFI SPLASH RPX-iii 40

Changing the Administrator password	40
Managing users and accounts	41
Secure Access	43
Editing Secure Access client error messages	44
Using Secure Access at client workstations	44
Printing with Secure Access	44
Printing the Configuration Report	45

Backing up and restoring preferences	45
Updating software	47
Downloading fonts	49
Setting up scan mailboxes	50
Setting up Hot Folders and Virtual Printers	50
Configuring the EFI Splash RPX-iii for Hot Folders	51
Configuring Hot Folders for SMB file sharing	52
Configuring Hot Folders for AppleTalk file sharing	52
Configuring the EFI Splash RPX-iii for Virtual Printers	53
Scanning for viruses	54
Energy considerations	54
Power-On	54
Energy Saver	54
EnergyStar Compliance	54
Sleep Mode	54
INDEX	55

INTRODUCTION

This document describes how to set up network servers and clients to use the Splash RPX-iii Xerox 700 Digital Color Press. For general information about using the digital press, your computer, application software, or network, see the documentation that accompanies those products.

Terminology and conventions

This document uses the following terminology and conventions.

Term or convention	Refers to
Digital press	Xerox 700 Digital Color Press
Fiery	Xerox EX Print Server and Integrated Fiery Color Server
Mac OS	Apple Mac OS X
EFI Splash RPX-iii	Splash RPX-iii Xerox 700 Digital Color Press
Titles in <i>italics</i>	Other documents in this set
Windows	Microsoft Windows 2000, Windows XP, Windows Server 2003, Windows Vista

About this document

This document covers the following topics:

- Setting up the network environment
- Setting preferences for the EFI Splash RPX-iii
- Using the Web Queue Manager
- Administering the EFI Splash RPX-iii

NOTE: The EFI Splash RPX-iii server can run on Mac OS 10.5 or Mac OS 10.4. Differences between the two operating systems are noted in instructions throughout this document.

NETWORK SETUP

This chapter describes environments that typically include one or more network configurations. It describes how to set up and configure your network for printing to the EFI Splash RPX-iii from Mac OS or Windows computers.

The EFI Splash RPX-iii supports AppleTalk, Bonjour/Rendezvous, AppleShare, Microsoft TCP/IP, Novell NetWare NDPS for TCP/IP or LPR or Port 9100 Printing, and legacy support for NetWare Print Queue setup through PConsole.

Configuring the EFI Splash RPX-iii for AppleTalk printing

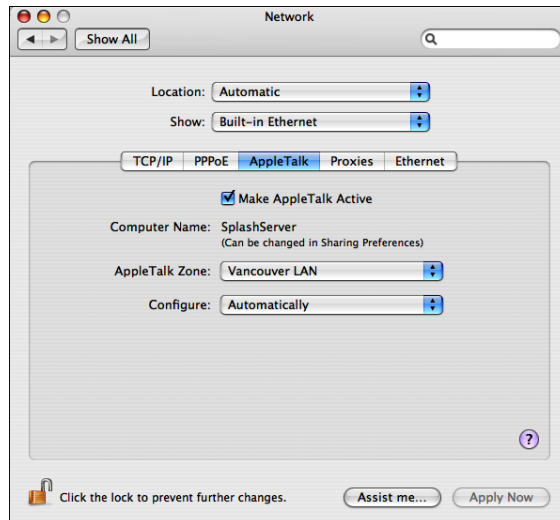
This section describes how to configure the EFI Splash RPX-iii to receive jobs from computers on an AppleTalk network.

TO CONFIGURE THE EFI SPLASH RPX-iii FOR APPLE TALK PRINTING

- 1 Choose System Preferences from the Apple menu on the EFI Splash RPX-iii, and then choose Network preferences.
- 2 For Mac OS 10.5, click Advanced and click AppleTalk.



Mac OS 10.4: Choose Built-in Ethernet from the Show menu and click the AppleTalk tab.



- 3 Select the Make AppleTalk Active option.
- 4 If more than one zone is displayed, select the appropriate AppleTalk Zone.
- 5 Click Apply Now (Mac OS 10.4) or OK (Mac OS 10.5).
- 6 Close Network preferences.
- 7 Start the EFI Splash RPX-iii application and log on with Administrator privileges.
- 8 In the EFI Splash RPX-iii application, choose Preferences from the Splash Server menu.
The Splash Server Preferences dialog box appears.
- 9 Click the Network icon and select the AppleTalk Registration option.
For more information, see [page 30](#).
- 10 Click OK.

Configuring the EFI Splash RPX-iii for TCP/IP and LPR printing

This section describes how to configure the EFI Splash RPX-iii to receive print jobs from a TCP/IP or LPR network.

To configure the EFI Splash RPX-iii and users' computers for TCP/IP printing, complete the following procedures:

- Connect the EFI Splash RPX-iii to the TCP/IP network.
- Configure the EFI Splash RPX-iii for the TCP/IP network.
- Enable TCP/IP printing.
- Configure users' computers for TCP/IP printing.

Connecting the EFI Splash RPX-iii to the TCP/IP network

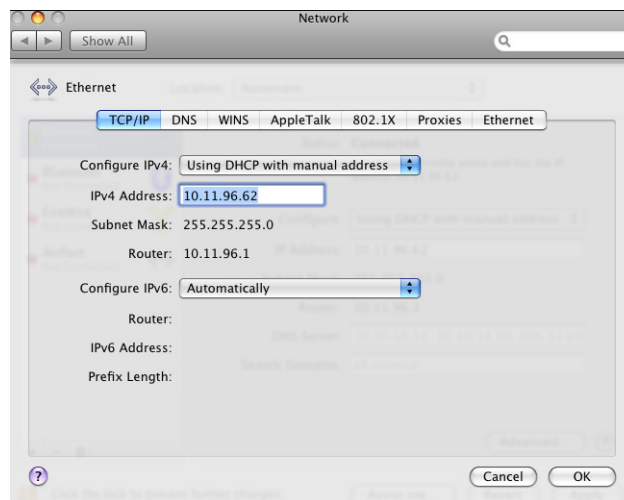
Connect the Local Area Network (LAN) card or Ethernet port to the network.

Configuring the EFI Splash RPX-iii for the TCP/IP network

The following procedure explains how to configure the EFI Splash RPX-iii for the TCP/IP network.

TO CONFIGURE THE EFI SPLASH RPX-iii FOR THE TCP/IP NETWORK

- 1 Obtain a router address from your network administrator.
- 2 Choose System Preferences from the Apple menu on the EFI Splash RPX-iii, and then choose Network Preferences.
- 3 Mac OS 10.5: Click Advanced.



Mac OS 10.4: Choose the local area network (LAN) card type or Built-in Ethernet from the Show menu for the TCP/IP network.



4 To configure the TCP/IP address manually, choose Manually from the Configure menu.

Assigning the EFI Splash RPX-iii a static TCP/IP address allows users to locate the EFI Splash RPX-iii reliably on the network. To set up the DHCP server to use the same TCP/IP address, contact your network administrator.

Type the EFI Splash RPX-iii IP address.

NOTE: Type a Subnet mask number, if required.

NOTE: If the Subnet mask number is different than the default mask number, change it to match the number used on your network. For more information, contact your network administrator.

Type the Router address (gateway address), if required.

A network router maintains a list of IP addresses for two or more groups of network devices. The router then uses the list of addresses to direct network data to the appropriate location on the network. To enter two or more router addresses, press Return after typing each address.

Type the Name server address for your local DNS server on your network (Mac OS 10.4 only, optional).

Type the search domain name that pertains to your DNS name; for example, design.corp.com (Mac OS 10.4 only, optional).

Or to have a TCP/IP address automatically assigned from the network, choose Using DHCP.

5 If the Mac OS computer is on an IPv6 network, click Configure IPv6 and proceed to [step 6](#).

If the Mac OS computer is not on an IPv6 network, proceed to [step 7](#).

- 6 To configure IPv6 manually, type the IPv6 address and Router address (if required), and then click **OK**.

To configure IPv6 automatically, choose **Automatically** from the **Configure IPv6** menu and click **OK**.
- 7 Click **Apply Now** (Mac OS 10.4) or **OK** (Mac OS 10.5) to confirm the new setup.
- 8 Close the **Network Control Panel**.

Enabling TCP/IP printing from the EFI Splash RPX-iii

The following procedure explains how to enable TCP/IP printing from the EFI Splash RPX-iii.

TO ENABLE TCP/IP DIRECT PRINTING

- 1 Start the **EFI Splash RPX-iii** application.
- 2 Choose **Login** from the **Server** menu.
- 3 Type the **Administrator** password and click **OK**.
- 4 Choose **Preferences** from the **Splash Server** menu.

The **Splash Server Preferences** dialog box appears.
- 5 Click the **Network** icon.
- 6 Select the **Enterprise Networking** option and click **OK**.

The EFI Splash RPX-iii is ready to check that the network status for LPR/IP is online.

Configuring Windows 2000/XP/Server 2003/Vista for TCP/IP printing

The EFI Splash RPX-iii accepts print jobs from the TCP/IP network on a Windows 2000/XP/Server 2003/Vista or Novell NetWare NDPS LPR network. In addition, users on a TCP/IP network can print files directly to the EFI Splash RPX-iii by using Drop folders or Hot Folders.

NOTE: To print over the TCP/IP network, your computer must have Splash software appropriate for your operating system installed, and must be connected to the EFI Splash RPX-iii.

Windows computers are preconfigured with the Microsoft TCP/IP software installed. For information about configuring Windows for TCP/IP printing to the EFI Splash RPX-iii, see the [Printing Guide](#).

Configuring the EFI Splash RPX-iii for the IPv6 network and 802.1x

The following procedure explains how to configure the EFI Splash RPX-iii for the IPv6 network and 802.1x.

When you configure for the IPv6 network, you must configure both the Macintosh and the Splash Server before you can configure 802.1x.

TO CONFIGURE THE MACINTOSH FOR IPV6

- 1 Choose **System Preferences** from the Apple menu on the EFI Splash RPX-iii, and then choose **Network preferences**.
- 2 **Mac OS 10.5:** Click **Advanced**.
Mac OS 10.4: Choose **Built-in Ethernet** from the **Show** menu.
- 3 Click **Configure IPv6** on the **TCP/IP** tab.
- 4 To configure IPv6 automatically, choose **Automatically** from the **Configure IPv6** menu.
Click **OK** (Mac OS 10.4).
To configure IPv6 manually, type the IPv6 address and the Router address (if required).
Click **OK** (Mac OS 10.4).
- 5 Click **Apply Now** (Mac OS 10.4) or **OK** (Mac OS 10.5) to confirm the new setup.
- 6 Close the **Network Control Panel**.

TO CONFIGURE THE EFI SPLASH RPX-iii FOR IPV6

- 1 Start the **EFI Splash RPX-iii** application.
- 2 Log on with **Administrator** privileges.
- 3 Choose **Preferences** from the **Splash Server** menu.
The **Splash Server Preferences** dialog box appears.
- 4 Click the **Network** icon.
- 5 Select the **Use IPv6** option.
- 6 Click **OK** to close the **Splash Server Preferences** dialog box.

TO CONFIGURE 802.1X (MAC OS 10.4)

- 1 Double-click Internet Connect in the Applications Folder.
- 2 Choose New 802.1X Connection from the File menu.
- 3 Choose Edit Configurations from the Configuration menu.
- 4 Choose Built-In Ethernet 1 from the Network Port menu.
- 5 Specify the other information on the pane as appropriate for your network.

TO CONFIGURE 802.1X (MAC OS 10.5)

- 1 Choose System Preferences from the Apple menu on the EFI Splash RPX-iii, and then choose Network preferences.
- 2 Click Advanced.
- 3 Click 802.1X.
- 4 Specify the information on the pane as appropriate for your network.

Configuring the EFI Splash RPX-iii for NDPS Printing

The Novell NetWare server must be set up and configured prior to installing and configuring the NetWare Client. The NetWare Client must be installed on the workstation being used to configure the NetWare server for NDPS printing.

NOTE: Use the latest NetWare support pack and NetWare Client. For more information, see the documentation that accompanies NetWare.

The following procedures assume NDPS has been installed on your NetWare server and is properly configured. An NDPS Broker and NDPS Manager are required for configuring NDPS printing. If these are not in place, contact your network administrator.

TO ADD THE EFI SPLASH RPX-iii PPD TO THE NOVELL NETWARE NDPS BROKER

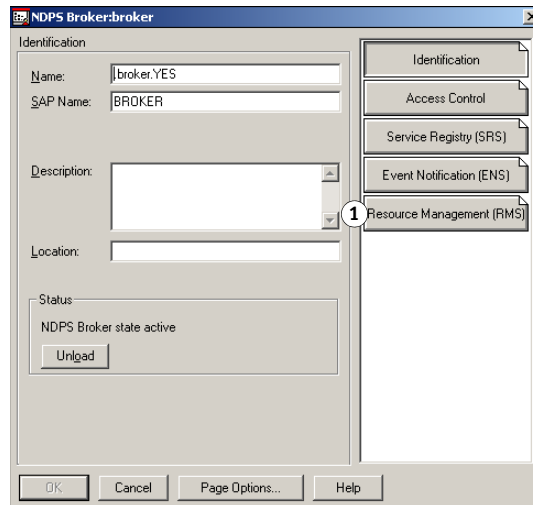
- 1 Log on to the NetWare file server with Administrator privileges.
- 2 Start NetWare Administrator.

NOTE: To start NetWare Administrator, go to the Sys:Public\Win32 folder on the NetWare server and click the nwadmin32 icon.

- 3 Double-click the Broker icon in the NetWare Admin window.

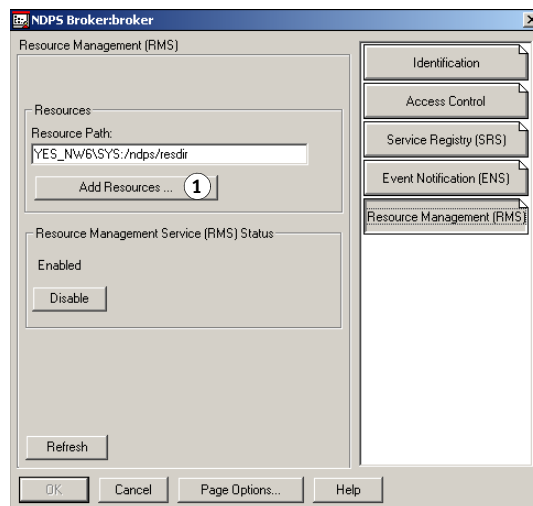
4 Click Resource Management (RMS).

1 Resource Management (RMS)



5 Click Add Resources.

1 Add Resources



6 In Resource Types, select the Windows operating system that you want for the EFI Splash RPX-iii Driver installation.

NOTE: You can add printer drivers for more than one Windows operating system, but you must repeat this procedure and the following procedure to install the appropriate printer driver for each Windows platform.

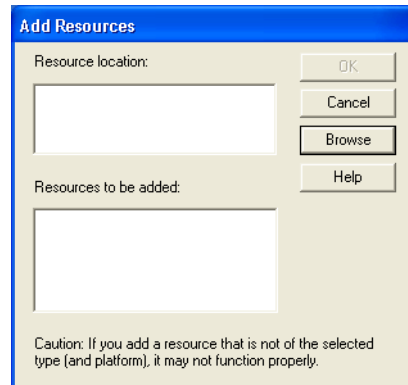
If the EFI Splash RPX-iii driver has already been installed, it appears in the installed printer drivers listed in the Current Resources section. If the EFI Splash RPX-iii driver is not listed, you must install it from the EFI Splash RPX-iii User Software and Documentation DVD.

- 7 Insert the EFI Splash RPX-iii User Software and Documentation DVD into the CD/DVD-ROM drive.

- 8 In the Manage Resources dialog box, click Add.

The Add Resources dialog box appears.

- 9 Click Browse in the Add Resources dialog box.



- 10 Browse to the CD/DVD-ROM drive, select the appropriate driver from the Standard drivers folder, and then click OK.
- 11 Verify the location of the file and click OK.
- 12 Click Continue.

The printer driver is copied to the Novell NDPS Server.

Use the following procedure to create a Printer Agent for the NDPS Manager.

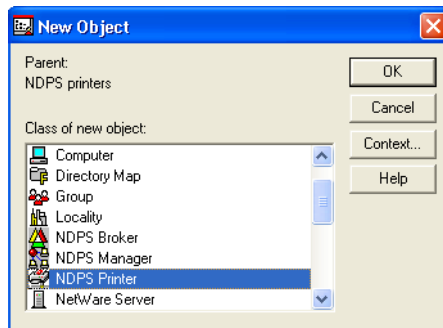
TO CREATE A PRINTER AGENT

- 1 Log on to the NetWare file server with Administrator privileges.
- 2 Start NetWare Administrator.

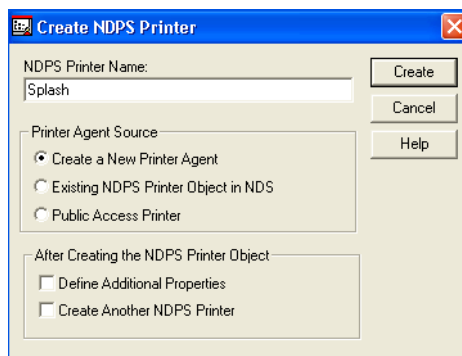
NOTE: To start NetWare Administrator, go to the Sys:Public\Win32 folder on the NetWare server and click the nwadmin32 icon. For more information, see the documentation that accompanies NetWare.

- 3 In the NetWare Administrator window, choose Create from the Object menu.

- 4 In the New Object dialog box, select NDPS Printer and click OK.



- 5 In the Create NDPS Printer dialog box, type a name in the NDPS Printer Name field.

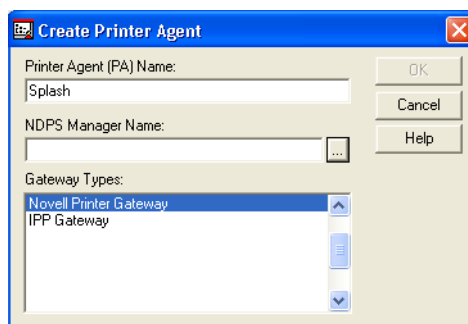


- 6 Select the Create a New Printer Agent option in the Printer Agent Source area.

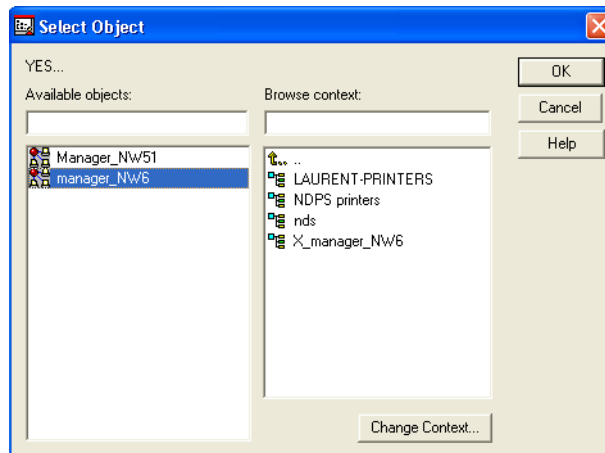
- 7 Click Create.

The Create Printer Agent dialog box appears with the NDPS Printer Name you chose displayed.

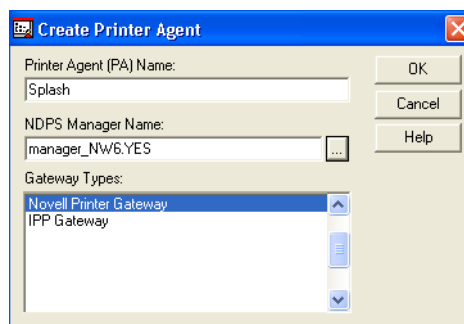
- 8 For the NDPS Manager Name, click the Browse button ("...").



- 9 In the Select Object dialog box, select the desired NDPS Manager object and click OK.

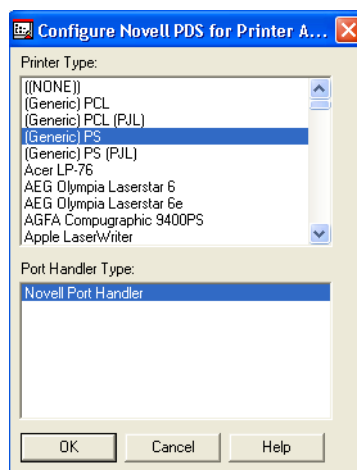


- 10 In the Create Printer Agent dialog box, make sure that Novell Printer Gateway is selected in the Gateway Types list and click OK.

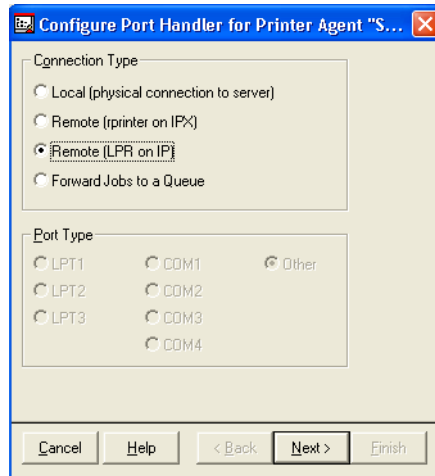


The Configure Novell for NDPS for Printer Agent dialog box appears.

- 11 Select (Generic) PS for the Printer Type and click OK.

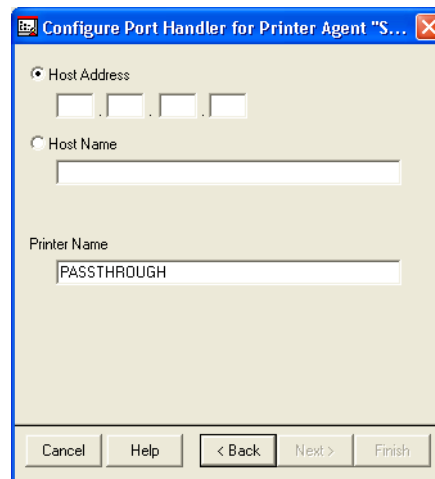


- 12 Select Remote (LPR on IP) and click Next.



A new user interface in the Configure Port Handler dialog box appears.

- 13 Select Host Address or Host Name.



If you select the Host Address field, type the IP address of the EFI Splash RPX-iii.

If you select the Host Name field, type the DNS name. You can leave Printer Name as the default, PASSTHROUGH, or type any printer name.

- 14 Click Finish.
- 15 Click the appropriate Windows operating system tab, choose the EFI Splash RPX-iii PPD, and then click Continue.

The NDPS Information dialog box appears. The current EFI Splash RPX-iii PPDs selected for the Windows operating systems for this NDPS Printer Agent are listed.

- 16 Click OK.

Configuring a Novell NetWare print queue

This section describes how to configure a TCP/IP print queue on a NetWare server for non-NDPS printing to the EFI Splash RPX-iii. The NetWare print queue uses the Novell LPR Gateway and can be used to print via older versions of NetWare.

Requirements for setting up the NetWare print queue are as follows:

- The NetWare server must be configured for TCP/IP.

For more information, see the documentation that accompanies the NetWare server.

- NetWare Print Services for UNIX must be installed on the NetWare server.

For more information, see the documentation that accompanies the NetWare server.

- The NetWare Server must be able to resolve the IP address of the EFI Splash RPX-iii via DNS.

Add an entry for the EFI Splash RPX-iii in the NetWare server's HOSTS file, located in the sys:\ETC folder, or add a DNS entry for the EFI Splash RPX-iii in your network's DNS server.

For more information, consult your network administrator.

TO SET UP NON-NDPS NOVELL PRINTING

- 1 Log on to the NetWare file server with Administrator privileges.

- 2 Start NetWare Administrator.

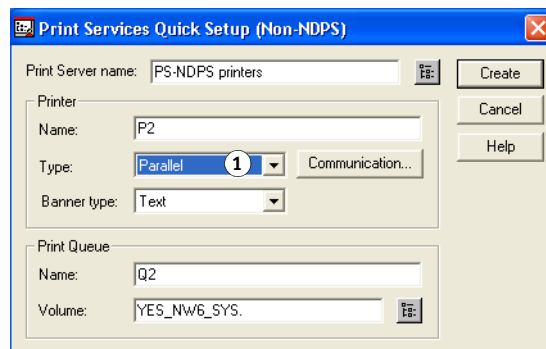
To start NetWare Administrator, open the Sys:Public\Win32 folder on the NetWare server and click the nwadmin32 icon.

- 3 Select the Container where you want the printer configuration to be located.

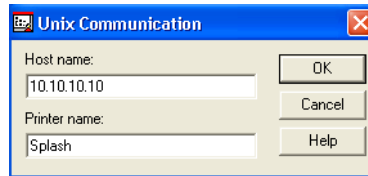
- 4 Choose Print Services Quick Setup from the Tools menu.

- 5 Choose UNIX from the Type menu.

1 Change Type to UNIX



- 6 In the Unix Communication dialog box, type the EFI Splash RPX-iii Host name (DNS name or IP address), type the Printer name, and then click OK.



- 7 At the NetWare Server Console, type "load pserver" and select the print server that you just created.
- 8 At the NetWare Server Console, type "load unicon," go to Start/Stop Services, click Insert, and then start NetWare to Unix print services.
- 9 Browse for the print queue that you just created.

Connecting to a Fiery

The EFI Splash RPX-iii supports a direct connection to the Fiery or a connection over the network. After the initial connection is made, the EFI Splash RPX-iii automatically reconnects to the same Fiery each time it is started.

The EFI Splash RPX-iii installation process guides you through establishing the initial connection. Keep in mind the following considerations:

- Determine if the connection is Direct Connect or Network Connect.
- If the Mac OS X computer has a single built-in network port, only Network Connect is allowed.
- If the Mac OS X computer has multiple built-in network ports, verify that the second port is available for connection to a Fiery.
- If the Fiery software requires an update to connect to the EFI Splash RPX-iii, the EFI Splash RPX-iii downloads the update after the connection is established.

Connecting to a Fiery

The EFI Splash RPX-iii can connect to a Fiery by the Direct Connect method or the Network Connect method. The following procedures cover both methods.

NOTE: Direct Connect is supported only with a digital press with an integrated Fiery. A stand-alone Fiery must use Network Connect.

TO CONNECT TO A FIERY USING THE DIRECT CONNECT METHOD

- 1 **Start the EFI Splash RPX-iii application.**
- 2 **Click Direct Connect.**
- 3 **If the Connect dialog box appears, follow the on-screen instructions to set the copier IP address.**

The EFI Splash RPX-iii establishes a connection and displays the message “Connection OK.”

- 4 **The EFI Splash RPX-iii prints a Startup Page.**

TO CONNECT TO A FIERY USING THE NETWORK CONNECT METHOD FOR THE FIRST TIME

- 1 **Start the EFI Splash RPX-iii application.**
- 2 **Click Network Connect.**

The Fiery Chooser dialog box appears.

- 3 **The EFI Splash RPX-iii scans for Fiery servers on the network.**

Any Fiery on the same subnet appears in the list.

- 4 **Select a Fiery or type the IP address and click Connect.**

The EFI Splash RPX-iii establishes a connection and displays the message “Connection OK.”

- 5 **The EFI Splash RPX-iii downloads the enabler.**
- 6 **The EFI Splash RPX-iii prints the Startup Page.**

Changing the Fiery connection

To change the Fiery connection while the EFI Splash RPX-iii application is running, follow the instructions in the following procedure.

TO CHANGE THE FIERY CONNECTION

- 1 **Start the EFI Splash RPX-iii application and log on with Administrator privileges.**
- 2 **Click the Stop button to stop processing.**
- 3 **Choose Controller Connection from the Splash Server.**

The Fiery Chooser dialog box appears.

- 4 **The EFI Splash RPX-iii scans for Fiery servers on the network.**

Any Fiery on the same subnet appears in the list.

- 5 **Select a Fiery or type the IP address and click Connect.**

The EFI Splash RPX-iii establishes a connection and displays the message “Connection OK.”

- 6 **The EFI Splash RPX-iii downloads the enabler.**
- 7 **The EFI Splash RPX-iii prints the Startup Page.**

SETTING DEFAULT PREFERENCES

This chapter describes how to set default preferences for jobs and EFI Splash RPX-iii operation, using the Splash graphical user interface.

Setting default job settings

You can set default print options for jobs not sent with a EFI Splash RPX-iii PPD, such as color correction, printing modes, and paper types. The interface is similar to the Job Options dialog box when you print a job.

NOTE: The Number of Copies and Page Range options are not available in Default Job Settings tabs.

Editing default job settings

The following procedure explains how to edit default job settings.

TO CUSTOMIZE DEFAULT JOB SETTINGS

1 Make sure that no jobs are currently printing or processing.

To stop a print job in the Active queue, press Start/Stop or choose Stop Processing from the Server menu. To resume printing, press Start/Stop or choose Start Processing from the Server menu.

2 Log on to the Splash Server with Administrator privileges.

3 Choose Edit Defaults from the Jobs menu.

The Default Job Settings dialog box appears.

4 Click each of the tabs (File, Page, Imposition, Tray, Output, Color, Quality, and Extras) and set the options.

5 Click OK to save your custom set of default settings.

Job defaults for PostScript printing

Define default job settings at the EFI Splash RPX-iii. Defaults are applied to the following types of jobs:

- Jobs from UNIX clients
- Jobs sent from Mac OS or Windows 2000/XP/Server 2003/Vista computers using non-Splash PPDs

- Graphics files (EPS, JPEG, 1-bit TIFF, TIFF, TIFF/IT, DCS 2.0, ExportPS, CT/LW, CT/NLW, PSD, PDF, PDF2Go, and PDF-X1/a formats) or PostScript files that are placed in the Drop folder or dragged to the Active or Hold queues
- Jobs sent from the printer driver with Printer's Default selected

Setting up EFI Splash RPX-iii preferences

The Splash Server Preferences dialog box allows you, as the administrator, to configure the EFI Splash RPX-iii. The dialog box is configured with the following tabs:

- **Server** includes file converters, job processing preferences, job error preferences, and the Server Name.
- **Page** allows you to choose settings for printing cover pages, previews, custom page sizes, and mapping jobs.
- **Network** displays Remote Queue Management, Enterprise Networking, AppleTalk Registration, and Enable Web Access settings.
- **Color** includes various options for color printing and calibration.
- **Appearance** includes options for displaying font styles in the job queues.
- **Jobs** allows spooled jobs to be deleted automatically based on given parameters of time or number of jobs.
- **Button Bar** allows you to select the icons that appear in the Splash Server interface.
- **Job Logging** displays settings for starting, storing, and viewing Job Log files.

TO VIEW AND EDIT EFI SPLASH RPX-iii PREFERENCES

- 1 **Make sure that no jobs are currently printing or processing.**



If printing is in progress at the EFI Splash RPX-iii, do *not* modify the EFI Splash RPX-iii preferences. Doing so may cause unexpected results in the printed output. Editing server preferences does not cause jobs to be reRIPped.

- 2 **Choose Login from the Server menu.**
- 3 **Type the Administrator password.**
- 4 **Click OK.**
- 5 **Choose Preferences from the Splash Server menu.**
- 6 **In the Splash Server Preferences dialog box, click the tab that corresponds to the preferences that you want to set, as described in the following sections.**

Setting Server preferences

The options on the Server tab in the Splash Server Preferences dialog box allow you to define the Server Name and set file converter and job processing preferences.

Assigning a server name

The name you type in the Server Name field is visible to remote clients who connect to the EFI Splash RPX-iii over an AppleTalk or Bonjour network. “Splash Server” is the default name. If you connect more than one EFI Splash RPX-iii to the same network, you must assign each a different name in order for both to appear on the network.

To change the server name, type a unique name in the Server Name field. Assign the EFI Splash RPX-iii a name that clearly indicates that it is a color printer.

Print Startup Page prompts the server to print a Startup Page when the server starts. The Startup Page displays a recognizable color pattern and basic printer and server configuration information.

Always Hold Incoming Jobs places a temporary hold on all print jobs received. Incoming jobs go to the top of the Hold queue and are not RIPped or printed. This allows the EFI Splash RPX-iii administrator to review all jobs before they print.

NOTE: When this option is selected, you must drag a print job from the Hold queue to the Active queue or select the job in the Hold queue and choose Remove Hold from the Jobs menu to print it.

Secure Erase specifies whether the EFI Splash RPX-iii deletes files permanently, so that they cannot be recovered. This option affects spool files for jobs, files generated by processing spool files, and scan files.

Setting GA File Converter preferences

To start the GA (Graphic Arts) File Converter automatically, select the GA File Converter option. When the Converter starts, it appears in the Mac OS X Dock. The Converter supports the following formats: 1-bit TIFF, TIFF/IT, PDF-X1/a, CT-LW, CT/NLW, PDF2Go, and ExportPS.

To configure GA File Converter preferences, select GA File Converter in the Dock, and then choose Preferences from the GA File Converter menu. You can set the following options:

Conversion options

- **Resolution:** 200, 400, or 600 dpi
- **Anti-Aliasing:** Bilinear or Nearest Neighbor

Setting the Job Content (Define Errors) preferences

When you click Define Errors, you can specify how to manage jobs that contain errors and may not print correctly. For each error type, you can select to Ignore the error and print the job, Warn that there is an error condition, but print the job anyway, or simply Error the job without printing. This allows you to prevent jobs from printing that have errors that may be difficult to find the root cause.

Various conditions represent errors in some workflows and not others. For example, the presence of spot colors in a job that is proofing a CMYK-only press almost always guarantees incorrect results in the proof. RGB colors in a job in any press proof is likely to produce less desirable output. Recognizing these errors before you print allows you to detect and correct errors earlier in the process.

When errors and warnings occur, use other tools such as PreFlight and Color Postflight to identify the errors. See [Color Guide](#).

For each option, select one of the following:

Ignore (✔) ignores error, prints, and follows normal File Handling settings.

Warn (⚠) prints the job and returns the job to the Error queue with a warning message describing the problem.

Error (❗) does not print the job and returns the job to the Error queue with an Error message describing the problem.

Error handling options include:

Section	Option	Default setting
Color	RGB color	Ignore
	Spot colors	Ignore
	Spot color not defined	Ignore
	Media type not calibrated	Ignore
	Untagged RGB colors	Ignore
	No output intent on PDF/X-3 file (This option is only selected if the PDF/X-3 Compliant job option is selected.).	Ignore
	Not PDF/X-3 Compliant NOTE: Setting Not PDF/X-3 Compliant to Error or Warn only affects jobs for which the PDF/X-3 Compliant job option is enabled.	Ignore
Font	Font not available	Ignore
	Not included in job	Ignore
Quality	Low resolution images	Ignore
	Minimum resolution	72

Finishing allows the EFI Splash RPX-iii to handle copier errors based on the following preference settings: Strict and Relaxed.

Strict error handling means the job does not print if the job settings cannot be satisfied.

Relaxed error handling means the jobs will print if the conflict is handled in a reasonable manner. When Relaxed is selected, the following conflict types will result in error:

- Page size and type are not available in the digital press.
- The job violates Booklet folding limitations.

All other jobs will print with finishing options disabled as necessary to make them print. Most errors occur because paper sizes and types conflict with the selected finishing options, in which case the job prints with the finishing options disabled.

Setting the Error Dialog Timeout preference

Type a unit of time (a minimum of one minute) in the Error Dialog Timeout field to specify how long processing is delayed at the EFI Splash RPX-iii when a printing error occurs. If the error is not corrected within this time limit, the job moves to the Error queue. To minimize the delay of processing subsequent jobs when an error occurs, set the timeout to one minute. To ensure that jobs remain active until the error is corrected, select Never Timeout.

Beep While Displayed alerts the EFI Splash RPX-iii to “beep” every 10 seconds when an error message is displayed. The 10-second interval cannot be changed. If you close the dialog box or the dialog box times out, the beep stops.

Setting Page preferences

The options on the Page tab in the Splash Server Preferences dialog box allow you to set Page preferences, including the following:

Print Cover Page prints a standard cover page as the first page of any job.

Cover pages include the date and time printed, job owner’s name, job name, and number of pages.

Handle Paper Errors at Print Time processes jobs when the correct paper size is not available on the digital press. When the job is ready to print, EFI Splash RPX-iii prompts you to load the correct paper. If this option is disabled, jobs that request a paper size that is not loaded in the digital press are immediately moved to the Error queue. If this option is enabled, Map A4/ Letter and A3/Tabloid has no effect.

Map A4/Letter and A3/Tabloid is useful for frequent printing on Letter and Tabloid paper sizes with occasional A4 or A3 jobs, or vice versa. If this option is selected and no A4 paper is loaded at the digital press, an A4 job is automatically converted to print on Letter paper. If A4 paper is loaded, a Letter size job is converted to print on A4. If Tabloid paper is loaded, jobs with A3 paper selected print on Tabloid paper. If A3 paper is loaded, jobs with Tabloid paper selected print on A3 paper.

In each case, the job is scaled proportionally to fit the paper size and the image is centered on the page to prevent clipping. After the job prints, a spool file for the job appears in the Error queue with a message indicating that the paper size for the job was converted.

Relaxed Page Size for Dropped Files prints dropped files on a larger page size if an exact page size match cannot be found. The option applies to dropped TIFF, EPS, or PDF files and files processed by the GA File Converter.

If you select this option, the job prints centered on the page, but is not scaled to fit the page size. Many dropped files are not exact matches for standard page sizes and produce printing errors. For example, many PDF creators subtract margins when creating the PDF page size, resulting in a page request for 8.2 x 10.7 or similar paper size. If this option is selected, and an exact match for the requested page size is not available, the job prints on the first page size loaded on the printer that is large enough to fit the job. If none of the available page sizes is large enough, the job prompts a Page Size error message.

NOTE: Dropped PostScript and DCS 2.0 files are not affected by this option.

Previews allows the administrator to save previews for all pages or for the first page only and to specify what quality level preview to generate.

The Previews control options are:

- **Save:** All Pages or First Page Only
- **Quality:** Higher or Lower

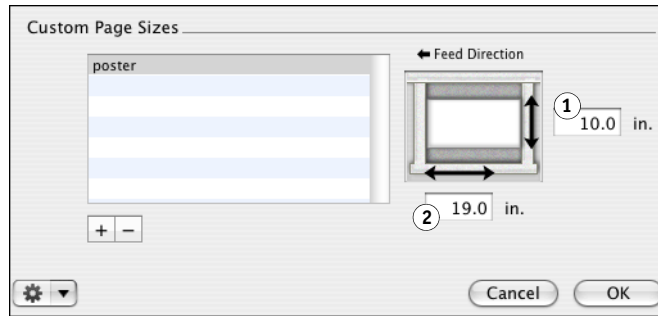
Custom Page Sizes allows the administrator to define new custom page sizes at the EFI Splash RPX-iii and use them for printing and calibrating. The EFI Splash RPX-iii tracks the custom page sizes that have been created by a client printer driver and printed to the EFI Splash RPX-iii or the custom page sizes programmed into the digital press, and adds those to the custom page size list.

NOTE: The list of custom page sizes at the server is not available through the EFI Splash RPX-iii print driver. They are only accessible when you modify Job Properties at the EFI Splash RPX-iii. Users must define their own custom page sizes in the print driver. For instructions, see the [Printing Guide](#).

TO ADD A CUSTOM PAGE SIZE

- 1 Click the plus sign (+) and type a name for your custom page size.
- 2 Enter the page dimensions according to the feed direction illustrated.

- 1 X dimension
- 2 Y dimension



If $X > Y$, the paper is long-edge feed.

If $X < Y$, the paper is short-edge feed.

NOTE: The dimensions are constrained to paper sizes supported by the digital press.

TO DELETE A CUSTOM PAGE SIZE

- Select the custom page name from the list and click the minus sign (-).

TO RENAME A CUSTOM PAGE SIZE

- Double-click the custom page from the list and type a new name.

Setting Network preferences

The options on the Network tab in the Splash Server Preferences dialog box allow you to set network printing and queue management options.

Setting Network preferences

The Network preferences in the Splash Server Preferences dialog box allow you to set the Enterprise Networking, AppleTalk Registration, Windows Workgroup, Allow RIP While Receive, and Enable Web Access options, as follows.

Enterprise Networking: With this option selected, the EFI Splash RPX-iii can receive print jobs from clients on TCP/IP networks via LPR, in addition to clients on an AppleTalk network. The EFI Splash RPX-iii maintains both network connections simultaneously.

Parse for Document User Name: Document User Name is extracted from each print job as it is received at the EFI Splash RPX-iii. When this option is cleared, Enterprise Networking determines the owner name from the network connection.

Use IPv6: When IPv6 is selected, the EFI Splash RPX-iii allows entry of an IPv6 address for selection of a Fiery in Network Connect mode in the Connection dialog box. It also allows the use of IPv6 for both LPR and Port 9100 spooling and the connection to the Fiery.

NOTE: The IPv6 address for the Mac OS X must be configured and enabled in the Mac OS X Network System Preferences.

AppleTalk Registration: Select this option to register the EFI Splash RPX-iii name on the AppleTalk network. If this option is cleared, remote users cannot print over AppleTalk to the EFI Splash RPX-iii. This option may be useful in network environments where it is not desirable to route AppleTalk.

Allow RIP While Receive: If this option is selected, the EFI Splash RPX-iii processes the job while it is being received over the network. If your printing environment includes both large and small jobs, selecting this option uses the processing power of the EFI Splash RPX-iii most efficiently.

Enable Web Access: For information about this option, see [“Enabling Web Access”](#) on page 37.

Windows Workgroup: Type the name of the Windows Workgroup to which the EFI Splash RPX-iii belongs. This is the name that appears on the network when Windows users browse for the EFI Splash RPX-iii.

Setting Web Queue Management preferences

For information about setting the Web Queue Management preferences, see [“Controlling Web Queue Management privileges”](#) on page 39.

Setting Color preferences

The options on the Color tab in the Splash Server Preferences dialog box allow you to set the Print preferences. For more information about these options, see the [Color Guide](#).

Digital Press Screening includes the following digital press screening settings:

- 200 Cluster Dot specifies 200 lpi cluster dot for text, objects, graphics, and images.
- 200 Rotated Line specifies 200 lpi rotated line for text, objects, graphics, and images.
- Enhanced Text and Graphics specifies 300 lpi cluster dot for text, objects, and graphics, and 200 lpi cluster dot for images.
- Enhanced Text specifies 300 lpi cluster dot for text and 200 lpi cluster dot for objects, graphics, and images.

Use the 200 Cluster Dot and 200 Rotated Line settings for general printing and proofing. The Enhanced settings may provide better output for text and graphics, but midtone colors may be less accurate.

NOTE: Recalibrate all profile sets after changing the Digital press Screening setting.

NOTE: The Digital press Screening option is ignored when the Screened job option is selected.

Grayscale As K in CMYK color corrects the black channel as CMYK black versus RGB black. Select this option if most of your documents are designed using CMYK colors. Clear this option if you print mostly from office applications that use RGB colors.

Progressives allows printing as many as four separate color passes per page. Users can examine the result of progressively adding color to the output and can customize progressive prints to match their workflow.

Select the number of sheets to print (Sheets 1-4), and then select the number of colors to print on each sheet (C, M, Y, or K). Choose Print Progressives in the job options before printing jobs with the progressives defined here.

Setting Calibration preferences

Warn after _ Days allows you to select a specific number of days from the last calibration date to remind you to recalibrate the printer. When the time set in Days Last Calibrated Warning expires, the date and time listed in the Last Calibrated area of the EFI Splash RPX-iii application main window are displayed in red.

Automatically launch ColorCal launches ColorCal automatically on the day you specified for Warn after _ Days option.

Allow Remote Calibration allows you to run ColorCal on any Mac OS v10.4 computer or later and update the EFI Splash RPX-iii remotely.

Disable this option if you only want to allow calibration from the EFI Splash RPX-iii and do not want a remote calibration station to control calibration for your EFI Splash RPX-iii.

Setting Appearance preferences

The options on the Appearance tab in the Splash Server Preferences dialog box allow you to set the color and size of the text that appears in each of the print queues.

Setting Button Bar preferences

To customize the icons that are displayed, drag the icons to or from the Loaded Buttons list.

Setting Jobs preferences

The options in the Splash Server Preferences dialog box allow you to set the following preferences:

Auto Delete Jobs allows spooled jobs to be deleted automatically based on how long the job has been at the server or number of jobs in the server queues.

Auto Delete Scans allows scans to be deleted automatically based on the parameters of time.

Daily Auto Delete Time allows you to specify a time to delete the jobs or scans as defined in the other controls to allow for minimum disruption to the normal EFI Splash RPX-iii workflow. If the EFI Splash RPX-iii is shut down at the time the deletion is scheduled to occur, the deletion occurs the next time the EFI Splash RPX-iii is started.

For scan jobs, the EFI Splash RPX-iii connects to the Fiery and deletes the scans from the Fiery. In the Network Connect configuration, use with caution because the results may not be desirable.

Setting Job Log preferences and reading a log file

The Splash log file in the Splash folder records information about each print job. The file name is "SplashPrint.log." For more information, see ["Reading the log file"](#) on page 33.

If you quit the EFI Splash RPX-iii application and restart it, the log file continues to add information to the log and does not reset it. If you move the log file out of the Splash folder, the server automatically begins a new log file when it prints the next job.

TO MANAGE A LOG FILE

- 1 **Start the EFI Splash RPX-iii application.**
- 2 **Log on with Administrator privileges.**
- 3 **Choose Preferences from the Splash Server menu.**

The Splash Server Preferences dialog box appears.
- 4 **Click the Job Logging tab.**

The Job Log File dialog box appears.

5 In **Delete Log Entries**, specify how long the EFI Splash RPX-iii is to maintain the current print log file.

6 Click **OK**.

The log file is saved in the Splash folder on the hard disk drive every time a print job is completed. You can view the log file in any application that reads text files, or you can import the log file into a spreadsheet application for billing purposes.

Reading the log file

The log file contains the following information about each job:

- **User Name** displays the network identity of the client that sent the job to the EFI Splash RPX-iii.
- **Document Name** displays the name of the file sent.
- **Status** indicates whether a job was completed successfully (OK), or canceled, errored, or placed on hold (CANCELED).
- **Date** indicates the date that the job was sent to the printer.
- **Start Time** displays the time that the EFI Splash RPX-iii started processing the job.
- **RIP Time** displays the amount of time (in the format minutes:seconds) that the EFI Splash RPX-iii spent processing (RIPping) the job.
- **Print Time** displays the amount of time (in the format minutes:seconds) required to print the job; starts from the time printing begins at the printer, and ends at the time printing completes at the printer.
- **Color Model** indicates whether a job was printed in grayscale or color.
- **Tray 5** shows Yes or No when Tray 5 was used for the job.
- **Duplex** indicates whether the job was printed as double-sided output using the Manual Duplex feature.
- **Paper Type** displays the type of paper used for a job printed to Tray 5.
- **Page Size** displays the page size on which a job was printed.
- **Copies** display the number of job copies printed. This option is only displayed when the log is exported, not when you print the log or use the Job Log Viewer.
- **Bytes** indicates the file length. This option is only displayed when the log is exported, not when you print the log or use the Job Log Viewer.
- **Serial Number** displays the unique number assigned to the printed job. This option is only displayed when the log is exported, not when you print the log or use the Job Log Viewer.

- **Pages Rendered** displays the number of pages in a document. This option is only displayed when the log is exported, not when you print the log or use the Job Log Viewer.
- **Status Code** indicates the error status of job upon completion. This option is only displayed when the log is exported, not when you print the log or use the Job Log Viewer.
- **PPD Paper Type** indicates the media type. For the Xerox 700 Digital Color Press this is combined Media Type and Media Weight. This option is only displayed when the log is exported, not when you print the log or use the Job Log Viewer.
- **PPD Paper Size** indicates the paper size. This option is only displayed when the log is exported, not when you print the log or use the Job Log Viewer.
- **Color Images Printed** displays the total number of pages printed in color.
- **Black Images Printed** displays the number of pages that were printed using black ink only.
- **Cover Page** indicates if a cover page was printed for a job.

NOTE: The Cover Page is not counted as a Black Image Printed. To include the cover page in billing records, it is necessary to add one to the Black Images Printed if the Cover Page entry is set to Yes.

- **Job Comment** displays any information typed in the Document Comment field at the printer driver.
- **Account Number** displays the account number associated with the file (if available).

Mixed Media and Set Builder jobs that use more than one paper type are displayed in the log with one line per paper type.

Exporting the log file

To use the log file information in another application, you must export it. The exported file is in a tab-delimited format that can be opened in other applications (for example, database or spreadsheet applications, such as Microsoft Excel).

TO EXPORT THE LOG FILE

- 1 **Choose Export Log from the File menu.**

The Job Log is saved automatically to the desktop.

- 2 **Open the exported file in a spreadsheet application as a tab-delimited text file.**

Viewing the Job Log

Show Job Log allows you to view, sort, and print the Job Log. The toolbar icons are:

- **Print:** Print the job log entries currently shown.

TO VIEW THE JOB LOG

- **Choose Show Job Log from the Splash File menu.**

For more information about the Job Log, see the *Job Management Guide*.

Understanding Splash job entries in the Fiery Job Log

The Fiery Job Log contains entries for all jobs sent by the EFI Splash RPX-iii, as well as jobs sent directly to the Fiery. In the Fiery Job Log, all Splash jobs have the format SJNNNNNNNNjobname, where the eight Ns are a hexadecimal number unique to the job. The user name for the job is the user name reported by the EFI Splash RPX-iii.

The Splash log file contains only jobs sent to the EFI Splash RPX-iii and does not contain jobs sent directly to the Fiery.

Printing the Job Log

The Print Job Log option allows you to sort job information by customer, date, time, or account number and add a subtotal for each customer or account number. You can print all entries in the Job Log or only those entries added since the last Job Log printed.

USING THE WEB QUEUE MANAGER

This chapter explains how to configure the EFI Splash RPX-iii to allow remote users to connect to the server. The Web Queue Manager installed with the EFI Splash RPX-iii server software allows remote users on a TCP/IP network to view and control print jobs at the EFI Splash RPX-iii.

With Web Queue Manager, you can perform the following functions:

- Review the status of print jobs sent to the EFI Splash RPX-iii.
- Hold print jobs.
- Release held print jobs.
- Review and change print options for a job in the print queue.
- Log on with Administrator privileges and change Server Preferences.

For information about using Web Queue Manager, see the *Job Management Guide*.

Preparing the Web Queue Manager

To prepare the Web Queue Manager for use with the EFI Splash RPX-iii, you must configure the EFI Splash RPX-iii to run on a TCP/IP network and enable the Web Queue Manager option. For more information, see “[Configuring the EFI Splash RPX-iii for TCP/IP and LPR printing](#)” on page 9.

The Web Queue Manager uses Apple’s Web Sharing software. To use the Web Queue Manager from a client computer, you must have an established intranet or Internet connection, plus Safari v1.2 or later, or Microsoft Internet Explorer v6.0 or later.

The Web address (URL) for the Web Queue Manager is `http://` followed by the EFI Splash RPX-iii IP address. For more information, contact your network administrator.

Configuring the Web Queue Manager

To configure the Web Queue Manager for use with the EFI Splash RPX-iii, do the following:

- Set the IP Address for the EFI Splash RPX-iii.
- Enable Web Access in the EFI Splash RPX-iii Server Preferences.
- Enable Web Sharing in the Mac OS X System Preferences.

Set the IP Address for the EFI Splash RPX-iii

To use Web Queue Manager, you must acquire the manual IP address configured on the EFI Splash RPX-iii.

To configure the manual IP address for the for the EFI Splash RPX-iii, see [“To configure the EFI Splash RPX-iii for the TCP/IP network”](#) on page 10.

Enabling Web Access

The following procedure describes how to enable Web Access at the EFI Splash RPX-iii.

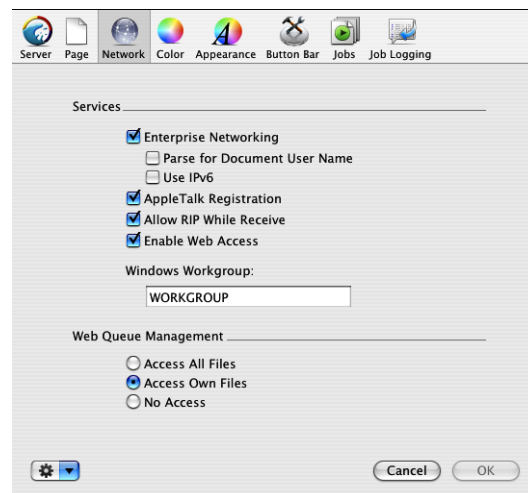
TO ENABLE WEB ACCESS AT THE EFI SPLASH RPX-iii

- 1 **Start the EFI Splash RPX-iii application and log on with Administrator privileges.**

- 2 **Choose Preferences from the Splash Server menu.**

The Splash Server Preferences dialog box appears.

- 3 **Click the Network icon and select the Enable Web Access option.**



- 4 **Click OK.**

The Sharing control panel opens.

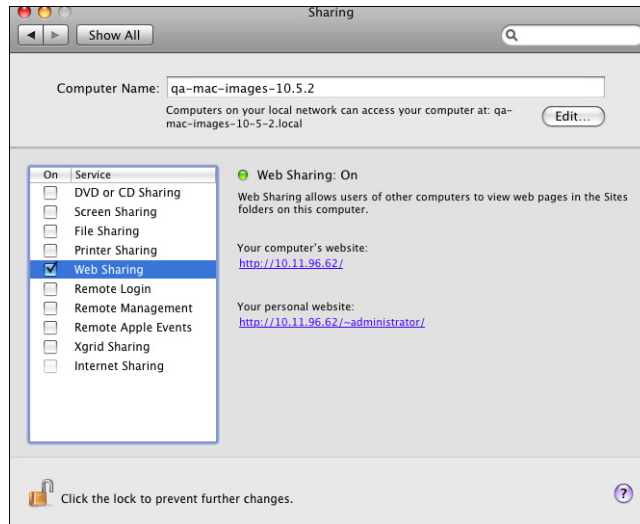
Enabling Web Sharing

The following procedure describes how to enable Web Sharing for the EFI Splash RPX-iii.

TO ENABLE WEB SHARING FOR THE EFI SPLASH RPX-iii

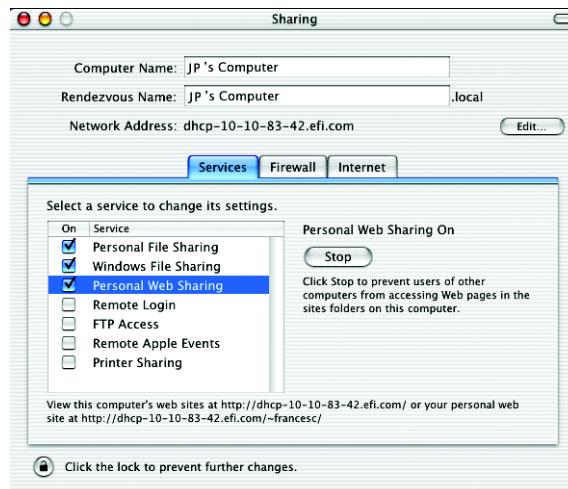
- 1 **Choose System Preferences from the Apple menu.**
- 2 **Select the Sharing control panel.**

3 Mac OS 10.5: Select the Web Sharing option.



Mac OS 10.4: Click the Services tab, select the Personal Web Sharing option, and then click Start.

The Personal Web Sharing On title appears and the Start button changes to a Stop button.



4 Close the Sharing control panel.

The Web Queue Manager is enabled. Remote users on a TCP/IP network with Safari or Microsoft Explorer installed can connect to the Web Queue Manager to remotely view and manage print jobs on the EFI Splash RPX-iii.

NOTE: The EFI Splash RPX-iii Administrator is usually also the Web Queue Manager Administrator. The EFI Splash RPX-iii Administrator sets privileges for remote users to edit print jobs in the EFI Splash RPX-iii print queues with the Web Queue Manager.

To use the Web Queue Manager with Administrator privileges, log on to the Splash Server Preferences in the Web UI using "administrator" for the user name and the server administrator password.

Controlling Web Queue Management privileges

The Web Queue Management options in the Network Preferences dialog box allow you to control which users can change or delete jobs in the Splash print queue from the Web Queue Manager.

TO CONFIGURE THE REMOTE QUEUE MANAGEMENT OPTION

- 1 **Start the EFI Splash RPX-iii application and log on with Administrator privileges.**
- 2 **Choose Preferences from the Splash Server menu.**
- 3 **Click the Network icon.**

The Splash Server Preferences dialog box appears.

- 4 **Select a Web Queue Management option.**
 - **Access All Files:** Users can put any job on hold, delete any job, change its position in the Print queue, and change print options for any job.
 - **Access Own Files:** Users can hold, delete, edit, or change the position in the Print queue for their own jobs. Users must log on to make changes to the Print queue.
 - **No Access:** Users can view information for print jobs, but they cannot perform any Print queue management functions.
- 5 **Click OK.**

ADMINISTERING THE EFI SPLASH RPX-iii

This chapter describes EFI Splash RPX-iii administration tasks.

Changing the Administrator password

The default Administrator password for the EFI Splash RPX-iii is blank (no password). Set the password to protect the EFI Splash RPX-iii against unauthorized changes.

TO CHANGE THE ADMINISTRATOR PASSWORD

- 1 Choose Login from the Server menu.
- 2 Click Change.
- 3 Type the old password, if any. Type the old password once and the new password twice.

NOTE: The default Administrator password for the EFI Splash RPX-iii is blank (no password).

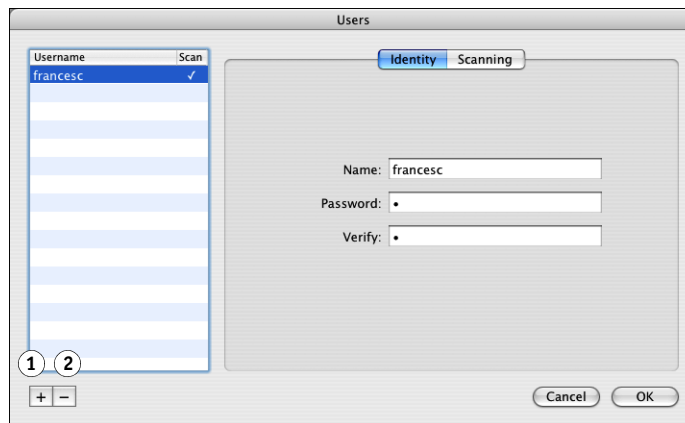
- 4 Enter and verify the new password.

Managing users and accounts

TO MANAGE USER ACCOUNTS

- 1 Log on to the EFI Splash RPX-iii with Administrator privileges.
- 2 Choose Users from the Server menu.
- 3 To add a user, click the plus sign “+” and type the user name in the Name field. Type the password in both the Password and Verify fields.

- 1 Plus sign (for adding users)
- 2 Minus sign (for deleting users)



A maximum of 24 characters is allowed in the Name field. A maximum of 8 characters is allowed in the Password field. An unlimited number of users can be added to the Users list.

- 4 To remove a user, select the user name and click the minus sign “-”.
- 5 To set scanning privileges, click Scanning and type the appropriate information.

For more information, see the [Job Management Guide](#).

- 6 Click OK.

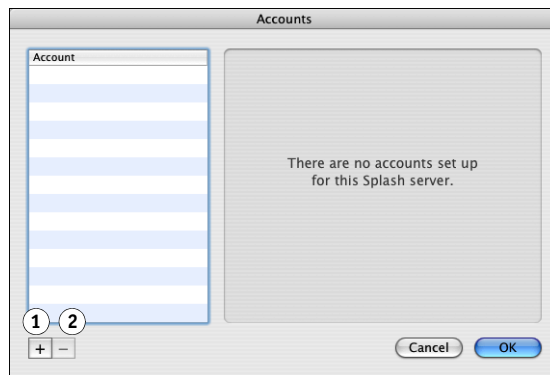
TO MANAGE ACCOUNT NUMBERS

- 1 Log on to the EFI Splash RPX-iii with Administrator privileges.
- 2 Choose Accounts from the Server menu.

The Accounts dialog box appears.

- 3 To add an account, click the plus sign “+” and type the account number in the Number field and a description in the Description field.

- 1 Plus sign
(for adding accounts)
- 2 Minus sign
(for deleting accounts)



A maximum of 32 characters is allowed in the Account field. A maximum of 100 characters is allowed in the Description field. The account description allows you to provide more information about the account than can be stored in the account name. The account description is not required and is not used elsewhere by Secure Access.

NOTE: Account names are limited to printable characters but may contain characters that are not alphanumeric characters.

- 4 Click the account name in the list to change it.
- 5 To remove an account, select the account number and click the minus sign “-”.
- 6 Click OK.

Secure Access

Secure Access allows the EFI Splash RPX-iii Administrator to limit who can print to the EFI Splash RPX-iii by defining combinations of user names, passwords, and account numbers that must be entered and verified before a job prints. You can define for each user whether they are part of a Color group or Black and White only group to limit some users to print non-color documents only.

You can also use Secure Access without the verification feature to improve job logging, by requiring user names and account numbers before a job is printed.

Secure Access accounts are established and managed at the EFI Splash RPX-iii. You are prompted for the required information at the workstation. Validation of the information, if required, is performed by the EFI Splash RPX-iii. If the information is not valid, users are prompted to reenter the correct information before the job prints.

TO START SECURE ACCESS

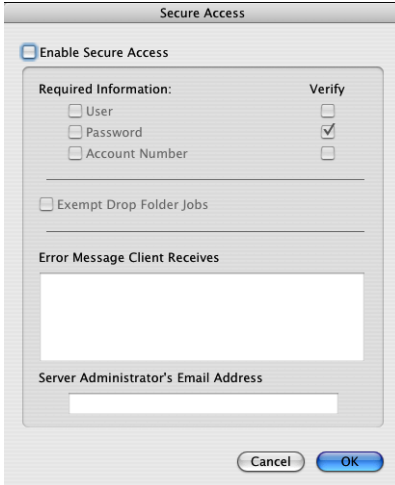
1 Log on to the EFI Splash RPX-iii with Administrator privileges.

2 Choose Secure Access from the Server menu.

The Secure Access dialog box appears.

3 Select the appropriate settings.

4 Select Verify to indicate whether you want the option to be verified.

The image shows a 'Secure Access' dialog box. At the top, there is a checkbox labeled 'Enable Secure Access' which is checked. Below this, there is a section titled 'Required Information:' with three checkboxes: 'User', 'Password', and 'Account Number'. To the right of this section is a 'Verify' column with three checkboxes. The 'Verify' checkbox for 'Password' is checked, while the others are not. Below the 'Required Information' section is a checkbox labeled 'Exempt Drop Folder Jobs' which is not checked. Further down is a section titled 'Error Message Client Receives' with a large text area. At the bottom of the dialog is a text field labeled 'Server Administrator's Email Address'. At the very bottom are 'Cancel' and 'OK' buttons.

If you select Password, you must select User, and both must be verified. For jobs printed using the EFI Splash RPX-iii printer driver, the information is verified at the client before the job prints. This ensures that the job prints successfully when it reaches the EFI Splash RPX-iii.

When the Verify option is cleared, the EFI Splash RPX-iii processes any job for which the selected information is not blank. The User and Account Number are output to the log file.

NOTE: Files placed in a Drop folder or Hot Folder, or dragged to one of the print queues, always produce an error when Secure Access is selected, unless you also select Exempt Drop Folder Jobs or enter the required information for the default job options or Hot Folder. If this option is selected, files sent to the EFI Splash RPX-iii via drop-printing are printed, regardless of the other Secure Access settings.

Editing Secure Access client error messages

When a user incorrectly enters Secure Access information, the EFI Splash RPX-iii returns an error message to the user's computer. To provide specific contact information for users of a particular EFI Splash RPX-iii, you can edit this error message. A maximum of 255 characters is allowed in the Error Message and E-mail Address fields.

Using Secure Access at client workstations

When Secure Access is configured at the EFI Splash RPX-iii, users must install the Secure Access printer driver provided with the EFI Splash RPX-iii. For detailed installation instructions, see [Getting Started](#).

Printing with Secure Access

Printing with the Secure Access printer driver is the same as printing with the standard driver, except that the driver prompts you for Secure Access information. Other job options work similarly.

With the first job sent to a particular printer driver, the Secure Access printer driver prompts you for the EFI Splash RPX-iii IP address if it cannot determine it automatically.

With every job, the Secure Access printer driver prompts you for the logon information that is defined at the EFI Splash RPX-iii. If the information you enter is not correct, the printer driver prompts you to re-enter the correct information, specifying what entry was first found to be incorrect, along with the error message set up at the server. The prompt remains until you enter the correct information or click Cancel. When you enter the correct information, the job prints as it would with the standard printer driver.

Printing the Configuration Report

The Configuration Report feature allows you to print saved preferences and other server information. The Configuration Report is a PostScript file that is sent to the Drop folder and printed on the digital press's default paper size.

NOTE: All options set to factory default are displayed in black text. Any option that is not a factory default setting is displayed in blue text. The file name is "Splash Config Report.ps."

TO PRINT THE CONFIGURATION REPORT

- 1 Log on to the EFI Splash RPX-iii with Administrator privileges.
- 2 Choose Print Configuration Page from the File menu.

Backing up and restoring preferences

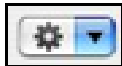
If you must reinstall server software, make a backup of the preferences so that you can restore them after the software is installed. If you have more than one EFI Splash RPX-iii, you can back up the preferences for one server and copy them so that other servers can use the same preferences.

The following information is backed up:

- Server preferences
- Color profile settings and output profile settings
- Screening preferences
- Screening sets
- Tray Alignment
- Profile sets (server must be recalibrated)
- Job defaults
- Hot Folders
- Print info
- Secure Access
- Job Log
- RGB, CMYK, and Output profiles that have been added to the server

TO BACK UP PREFERENCES

- 1 Log on with Administrator privileges.
- 2 Choose Preferences from the Splash Server menu.
- 3 Click the Server tab.
- 4 Click the icon in the lower-left corner.



- 5 Choose Export.
- 6 Name the preferences file, select a location to which to save the preferences file, and then click OK.

TO RESTORE PREFERENCES

- 1 Log on with Administrator privileges.
- 2 Choose Preferences from the Splash Server menu.
- 3 Click the Server tab.
- 4 Click the icon in the lower-left corner.
- 5 Choose Import.
- 6 Select the preferences file and click OK.

The preferences are restored.
- 7 If prompted, select whether to replace the current server name with the server name from the imported preferences.

Updating software

The EFI Splash RPX-iii provides an easy mechanism to keep your Splash Server and Fiery Controller software up to date. The EFI Splash RPX-iii automatically checks for updates once a week, or you can check for updates manually.

When the EFI Splash RPX-iii checks for updates and new software is available, a dialog box lists the updates. Download all updates or select only the ones that you want.

If you download Fiery updates and Splash Server updates, the Fiery updates are installed first. If necessary, the Fiery restarts and prints a Start Page. Finally, Splash Server updates are installed.

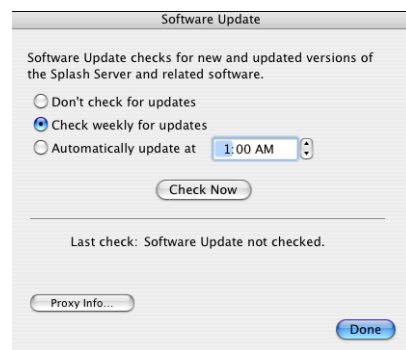
The Splash Server Macintosh must be configured for https access to the Internet:

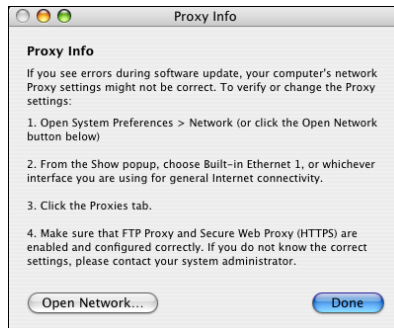
- The Macintosh must be connected to a network with Internet access.
- If the network uses a proxy server, the https proxy must be configured correctly.

For information, see [“To check for updates and configure proxy server settings”](#) on page 47.

TO CHECK FOR UPDATES AND CONFIGURE PROXY SERVER SETTINGS

- 1 Choose **Login from the Server** menu and log on with **Administrator** privileges.
- 2 Choose **Check for Updates** from the **Splash Server** menu.



3 Click Proxy Info.**4 Click Open Network or choose System Preferences > Network from the Apple menu.****5 Configure the Proxy server settings, and then click Done.****6 To search for new updates, click Check Now.****7 If you want the Splash Server to search for updates automatically, select Check weekly for updates.**

To download updates automatically, select Automatically Update at and specify a time. The EFI Splash RPX-iii queries the update server once a week at the specified time.

NOTE: The downloaded updates are not installed. You are asked to install them after the download is complete.

8 Click Done to close the Software Update dialog box.

TO DOWNLOAD UPDATES**1 Select the name of the update to see a detailed description.****2 Select each update that you want to install.****3 Click Install.**

All selected updates are downloaded and installed. If you cancel the update process or do not select some of the updates, those updates are available the next time you check for updates.

If you select Splash Server updates, follow the on-screen instructions.

Downloading fonts

The EFI Splash RPX-iii cannot process print jobs while font downloading is in process. If the EFI Splash RPX-iii is processing a job, choose Stop Processing from the Server menu or click Start/Stop.

Adding fonts to the EFI Splash RPX-iii

The EFI Splash RPX-iii provides 136 Roman PostScript fonts and two multi master fonts. Print jobs that use the PostScript fonts provided with the EFI Splash RPX-iii print faster because these fonts are resident at the EFI Splash RPX-iii and are not downloaded with the print job. If you frequently use fonts that were not provided with the EFI Splash RPX-iii, download these fonts to speed up printing.

Command WorkStation is used to download fonts from Windows computers. Splash Font Downloader is used to download fonts from Mac OS X computers.

Downloading fonts from a Windows client using Command WorkStation

Download fonts from Windows clients by using Command WorkStation.

TO DOWNLOAD FONTS USING COMMAND WORKSTATION

- 1 Log on to the EFI Splash RPX-iii with Administrator privileges.
- 2 Log on to Command WorkStation with Administrator privileges.
- 3 Choose Manage Fonts from the Command WorkStation Server menu.

The Server Fonts dialog box appears.

- 4 Click Add.
- 5 Browse to the font that you want to add.
- 6 Select the font and click Add.

Downloading fonts from a Mac OS X client using the Splash Font Downloader utility

Download fonts using the Splash Font Downloader utility that is located in the Utilities folder on the client DVD. It can run on systems with Mac OS X 10.3.9 or later.

TO DOWNLOAD FONTS USING THE SPLASH FONT DOWNLOADER UTILITY

- 1 **Start the Splash Font Downloader utility from Mac Finder > Application > EFI Splash RPX-iii > Utilities.**

The first time you connect to the Splash Font Downloader utility, select the Splash Server from the Splash Connection dialog box.

To change the Splash Server, select Splash Connection from the Splash Font Downloader menu, and then select a Splash Server.

- 2 **Click Add and browse to the font that you want to download.**
- 3 **Select the font and click Download.**

You can add one or more fonts at a time.

Setting up scan mailboxes

Before you can set up mailboxes for scan jobs, make sure that all users have been added. For information about setting up mailboxes, see the [Job Management Guide](#).

Setting up Hot Folders and Virtual Printers

Hot Folders allow you to create multiple Drop folders, each with an assigned set of print options that are applied to all jobs placed in the folder. This allows you to control print options and process a series of jobs with common printer driver settings.

For any job placed in a Hot Folder, the options associated with the Hot Folder override any options included in the job. A job created with the EFI Splash RPX-iii printer driver might specify Duplex, Long Edge Bind, but if it is dropped into a folder for which Duplex is set to None, the job will not print as Duplex.

You can also create Virtual Printers and assign options that override the options set at the client.

For more information about Hot Folders and Virtual Printers, see the [Job Management Guide](#).

Configuring the EFI Splash RPX-iii for Hot Folders

Hot Folders are created in the user's Public:Hot Folders folder. Folders can be shared via AppleTalk for Mac OS clients and via SMB for Windows clients. Hot Folders do not replace existing Drop folders.

The Hot Folders feature is not supported for file types supported by the GA File Converter. Any such files placed in a Hot Folder produce an error and are not printed.

TO CONFIGURE THE EFI SPLASH RPX-iii FOR HOT FOLDERS

- 1 **Log on to the EFI Splash RPX-iii with Administrator privileges.**
- 2 **Choose Hot Folders from the Server menu.**

The Hot Folders dialog box appears.
- 3 **Click the lock to unlock options and log on with Administrator privileges, if necessary.**
- 4 **Click the plus sign “+” and configure printer driver options for the Hot Folder.**
- 5 **Click OK.**
- 6 **Type a name for the Hot Folder.**

This name is the name that the client selects at the client workstation.

- 7 **Close the Hot Folders dialog box.**

Editing Hot Folders

To edit the job options for a previously created Hot Folder, choose Hot Folders from the Server menu. Click the lock to unlock options and log in as an administrator, if necessary. Click the plus icon “+” and double-click the Hot Folder that you want to edit from the list of Hot Folders and specify your changes. The Job Options dialog box appears, allowing you to change the options.

If the options for a Hot Folder are being edited, the exact set of options that is applied is dependent on when the job finishes copying to the Hot Folder and when the editing is completed. For reliable results, complete the editing of Hot Folder options before submitting jobs to the Hot Folder.

NOTE: As part of the removal process of the EFI Splash RPX-iii server software, Hot Folders are deleted.

For more information about configuring the EFI Splash RPX-iii for file sharing, see [Getting Started](#).

Renaming Hot Folders

The maximum number of characters in the Rename field is 255. If you have not created any Hot Folders, the Rename option is unavailable.

Configuring Hot Folders for SMB file sharing

You can allow a user on a Windows client workstation to view a Mac OS system. Use the following procedure to configure the EFI Splash RPX-iii for SMB file sharing from Windows client workstations.

To CONFIGURE THE EFI SPLASH RPX-iii FOR FILE SHARING (MAC OS 10.4)

- 1 Open System Preferences from the Apple menu.
- 2 Select Sharing.
- 3 Click the Services tab.
- 4 Select the Windows Sharing option.
- 5 Log on from a Windows computer.

To CONFIGURE THE EFI SPLASH RPX-iii FOR FILE SHARING (MAC OS 10.5)

- 1 Open System Preferences from the Apple menu.
- 2 Select Sharing.
- 3 Select File Sharing and click Options.
- 4 Select "Share files and folders using SMB".
- 5 Select the name of the user account that will share files and type the password for that user.
- 6 Click Done.
- 7 Log on from a Windows computer.

Configuring Hot Folders for AppleTalk file sharing

Use the following procedure to configure the EFI Splash RPX-iii for AppleTalk file sharing.

To CONFIGURE THE EFI SPLASH RPX-iii FOR APPLE TALK FILE SHARING (MAC OS 10.4)

- 1 Choose System Preferences from the Apple menu.
- 2 Select Sharing.
- 3 Click the Services tab.
- 4 Select the Personal File Sharing option.
- 5 Log on from a Mac OS X computer as guest.

TO CONFIGURE THE EFI SPLASH RPX-iii FOR APPLE TALK FILE SHARING (MAC OS 10.5)

- 1 Choose System Preferences from the Apple menu.
- 2 Select Sharing.
- 3 Select “Share files and folders using AFP”.
- 4 Log on from a Mac OS X computer as guest.

Configuring the EFI Splash RPX-iii for Virtual Printers

The administrator can create additional printers on the network as individual AppleTalk and LPR print queues. Virtual printers are accessible via AppleTalk for Mac OS clients and via LPR for Windows clients. The virtual printers apply chosen options to all jobs while allowing other options to be selected in the printer driver.

A print job sent to a virtual printer will have the corresponding virtual printer job options applied to it. A default print queue, “_Splash”, (which applies the server's default job options) is also present.

TO CONFIGURE THE EFI SPLASH RPX-iii FOR VIRTUAL PRINTERS

- 1 Log on to the EFI Splash RPX-iii with Administrator privileges.
- 2 Choose Virtual Printers from the Server menu.
The Virtual Printers dialog box appears.
- 3 To add a virtual printer, click the plus sign “+” and type the virtual printer name in the Name field.
- 4 Publish the virtual printer on AppleTalk only, LPR only, or both.
NOTE: If AppleTalk or LPR is disabled in Server Preferences, the option is disabled for virtual printers.
- 5 To remove a virtual printer, select the virtual printer name and click the minus sign “-”.
- 6 To set virtual printer options, click Edit Options.

The Default Job Settings dialog box appears, allowing you to configure printer driver options for the virtual printer.

- 7 Click OK.

For more information about setting options for virtual printers, see the [Job Management Guide](#).

Scanning for viruses

The EFI Splash RPX-iii is compatible with Norton AntiVirus 10.0 for Mac OS X and McAfee Virex 7.7 for Mac OS X. You must disable the Auto Scan feature for these applications, or problems may occur. For example, spool files may become corrupted and server preference changes may not be retained.

Energy considerations

Power-On

The EFI Splash RPX-iii can be started before or after the digital press is powered on. No power cycle of the digital press is required after the EFI Splash RPX-iii reboots. No power cycle of the EFI Splash RPX-iii is required if the digital press power is cycled.

Energy Saver

When the digital press is in Energy Save mode, you can start and use the EFI Splash RPX-iii. No power cycle of the digital press is required, even if the EFI Splash RPX-iii has been rebooted.

EnergyStar Compliance

The Mac OS X computer is EnergyStar compliant. However, the EFI Splash RPX-iii as configured at the factory is not compliant. If the EFI Splash RPX-iii is configured for EnergyStar compliance, it can go into Sleep Mode and must be woken up before users can print to it.

Sleep Mode

When the digital press is in Sleep Mode, you can start and use the EFI Splash RPX-iii. No power cycle of the digital press is required, even if the EFI Splash RPX-iii has been rebooted.

INDEX

Numerics

802.1x setup 13

A

Administrator password 40
 Allow RIP While Receive option 30
 Always Hold Incoming Jobs option 25
 Appearance, setting preferences 32
 AppleTalk printing 8
 AppleTalk Registration option 9, 30

B

Beep While Displayed option 27
 Bonjour networks 8, 25
 Button Bar, setting preferences 32

C

Color, setting preferences 31
 Configuration Report 45
 cover page 27
 Custom Page Sizes option 28

D

Days Last Calibrated Warning option 31
 DNS server 11
 drop printing, defined 44
 dropped files, definition 28

E

Enable Web Access option 30
 energy considerations 54
 Energy Saver 54
 EnergyStar Compliance 54
 Enterprise Networking option 30
 Error Dialog Timeout option 27

F

fonts, downloading 49

G

gateway address 11
 gateway, NDPS 18
 Grayscale As K in CMYK option 31

H

Handle Paper Errors at Print Time
 option 27
 Hot Folders 50

I

IPv6 network setup 13

J

job settings
 custom 23
 default 23
 Jobs, setting preferences 32

L

log file
 exporting 34
 setting preferences and reading 32
 viewing 34
 LPR printing 9
 configuring 9, 14

M

Map A4/Letter and A3/Tabloid
 option 28

N

NDPS 14
 NetWare print queue 20
 network setup
 IPv6 13
 LPR printing 9, 14
 Novell NDPS printing 14
 Novell Netware print queue 20
 TCP/IP 9, 14
 TCP/IP printing f
 or Windows 2000/XP 12
 Network, setting preferences 30
 Novell
 configuring a print queue 20
 network setup 14
 Novell gateway, NDPS 18

O

- options
 - Configuration Report 45
 - Hot Folders 50

P

- Parse For Document User Name
 - option 30
- PostScript printing, job defaults 23
- Power-On 54
- preferences
 - Appearance 32
 - backing up and restoring 45
 - Button Bar 32
 - Color 31
 - GA File Converter 25
 - Jobs 32
 - Network 30
 - Page 27
 - Server 24
 - setting 24
- Previews option 28
- Print Cover Page option 27
- Print Startup Page option 25
- printer agent, NDPS 16
- Printer Screening option 31
- printing, job defaults 23
- Progressives option 31

R

- Relaxed Page Size for Dropped Files
 - option 28

S

- Secure Access 43
- Secure Access client error messages 44
- Secure Erase option 25
- Server Name option 25
- server, setting preferences 24
- Sleep Mode 54
- Software Update 47
- Startup Page 25

T

- TCP/IP
 - configuring 9, 14
 - printing 9

U

- updating software automatically 47
- Use IPv6 option 30
- users, defining 41

V

- Virtual Printers 50
- virus scanning 54

W

- Web Access 37
- Web Queue Manager
 - configuring 36
 - preparing 36
 - Remote Queue Management 39
- Windows 2000/XP/Server 2003,
 - network setup 12
- Windows Workgroup option 30