



# Splash RPX-iii Xerox 700 Digital Color Press

## Printing Guide



© 2008 Electronics for Imaging, Inc. The information in this publication is covered under [Legal Notices](#) for this product.

45073080  
7 May 2008

# CONTENTS

<b>INTRODUCTION</b>	5
<b>Terminology and conventions</b>	5
<b>About this document</b>	6
<b>PRINTING FROM MAC OS X</b>	7
<b>Installing the Mac OS X printer files</b>	7
Downloading printer files from the EFI Splash RPX-iii	8
<b>Setting up the EFI Splash RPX-iii for printing</b>	10
Setting up printing with Mac OS X v10.5	10
Setting up printing with Mac OS X v10.4.x	15
Configuring Installable Options	20
Using the Virtual Printers	21
Selecting the PPD file	22
Using Desktop Printer (optional)	22
<b>Printing from Mac OS X computers</b>	23
Selecting the EFI Splash RPX-iii in the Printer List	23
Setting print options from Mac OS X	24
Enabling Two-Way Communication	38
Defining custom page sizes from Mac OS X	39
<b>Installing the Splash Status widget</b>	41
<b>PRINTING FROM WINDOWS</b>	43
<b>Adding a printer with the TCP/IP printing connection</b>	43
Preparing the Windows printer files	43
Setting up the TCP/IP printing connection	45
Setting up the Windows client for printing to the EFI Splash RPX-iii	48

---

<b>Adding a printer with the SMB printing connection</b>	50
Setting up the EFI Splash RPX-iii with Point and Print	51
Uninstalling the printer files	52
Configuring Installable Options	52

---

<b>Printing from Windows computers</b>	54
Selecting the EFI Splash RPX-iii from the Printers list	54
Setting print options from Windows	55
Enabling Two-Way Communication	65
Defining custom page sizes	67

---

<b>Installing the Splash Status widget</b>	69
--	----

---

<b>PRINT OPTIONS</b>	72
----------------------	----

---

<b>About printer drivers and PPD files</b>	72
--	----

---

<b>About print options</b>	72
Print option override hierarchy	73
Setting print options	73

---

<b>EFI Splash RPX-iii print options</b>	74
---	----

---

<b>More about print options</b>	90
File Handling	90
Job Handling	91
Manual duplex printing	92
Output	93
Tray Selection	95
Secure Printing	96
Secure Access	98

---

<b>INDEX</b>	99
--------------	----

## INTRODUCTION

This document describes how to install the printer drivers and PostScript printer description (PPD) files for the Splash RPX-iii Xerox 700 Digital Color Press, how to set up the Splash RPX-iii Xerox 700 Digital Color Press for printing, and how to print from Apple Mac OS and Microsoft Windows computers. It also provides information about the EFI Splash RPX-iii print options.

For information about system requirements and supported operating systems, see [Getting Started](#).

For information about setting up network servers and clients to use the Splash RPX-iii Xerox 700 Digital Color Press, see the [Configuration Guide](#).

For general information about using the digital press, computer, application software, or network, see the documentation that accompanies those products.

### Terminology and conventions

This document uses the following terminology and conventions.

Term or convention	Refers to
Digital press	Xerox 700 Digital Color Press
Fiery	Xerox EX Print Server and Integrated Fiery Color Server
Mac OS	Mac OS X
EFI Splash RPX-iii	Splash RPX-iii Xerox 700 Digital Color Press
Titles in <i>italics</i>	Other documents in this set
Windows	Windows 2000, Windows XP, Windows Server 2003, Windows Vista

## About this document

This document covers the following topics:

- Installing printer files on Mac OS computers
- Setting up the EFI Splash RPX-iii for printing from Mac OS computers
- Printing from Mac OS computers
- Installing printer files on Windows computers
- Setting up the printing connections from Windows computers
- Printing from Windows computers
- EFI Splash RPX-iii print options

## PRINTING FROM MAC OS X

To print a job from a Mac OS X computer to the EFI Splash RPX-iii, you must install the PostScript printer driver files for the EFI Splash RPX-iii and set up the EFI Splash RPX-iii for printing. The printer driver files are provided on the Splash RPX-iii User Software and Documentation DVD or can be downloaded directly from the EFI Splash RPX-iii over the network.

See the following table for the location of each procedure.

Procedure	See
Installing the Mac OS X printer files	<a href="#">page 7</a>
Setting up the EFI Splash RPX-iii for printing	<a href="#">page 10</a>
Printing from Mac OS X computers	<a href="#">page 23</a>
Installing the Splash Status widget	<a href="#">page 41</a>

### Installing the Mac OS X printer files

The following sections describe how to install the Mac OS X printer files for the EFI Splash RPX-iii.

For system requirements, see [Getting Started](#).

---

#### TO INSTALL THE PRINTER DRIVER FILES FOR MAC OS X

- 1 Quit all open applications.**
- 2 Mac OS X v10.4.x: Make sure that the Printer Setup Utility is not running on your computer.**  
Printer Setup Utility updates the list of available printers when it restarts. If a printer description file is added while it is running, you cannot select the associated printer model until you restart.
- 3 Insert the Splash RPX-iii User Software and Documentation DVD into the CD/DVD-ROM drive.**
- 4 Double-click the Splash RPX-iii Print Drivers.pkg.**
- 5 Select the Destination Volume and click Install.**

## 6 Click Install and follow the on-screen instructions.

The OSX Installer installs the printer driver files that correspond to the EFI Splash RPX-iii.

The printer driver files are installed to the following folders:

- **PPDs:** <Startup disk> : Library : Printers : PPDs : Contents : Resources : <language>.lproj
- **PDE plug-ins and filter:** <Startup disk> : Library : Printers : Splash

## 7 Click Close.

## Downloading printer files from the EFI Splash RPX-iii

You can download printer files to your computer directly from the EFI Splash RPX-iii over the network and install them using the procedures in the previous section.

For more information about downloading files from the EFI Splash RPX-iii, see the [Job Management Guide](#).

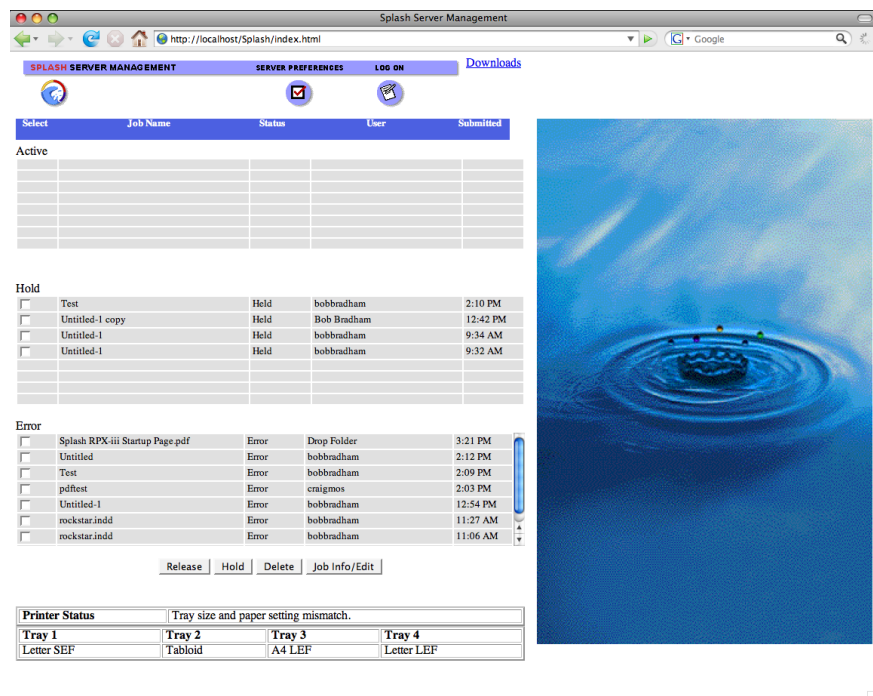
### TO DOWNLOAD THE MAC OS X PRINTER FILES

**NOTE:** Web Sharing must be enabled to view the Splash Server Management dialog box. For more information about Web Sharing, see the [Configuration Guide](#).

#### 1 Start your Internet browser.

#### 2 Type the EFI Splash RPX-iii IP address and press Enter.

The Splash Server Management web page appears.





- 3 Click Downloads in the upper right-hand corner of the web page.
- 4 Click Splash Installer Downloads.
- 5 Click RPX-iii MacOS X Drivers.zip and save the file to your desktop.
- 6 Open the RPX-iii MacOS X folder.
- 7 Open the Printer Driver folder.
- 8 Double-click the OSX installer and follow the on-screen instructions.
- 9 After the installation has finished, click Quit.

## Setting up the EFI Splash RPX-iii for printing

The following section describes how to set up the EFI Splash RPX-iii on a Mac OS X computer.

**NOTE:** The steps for setting up the EFI Splash RPX-iii on a computer with Mac OS X v10.5 and a computer with Mac OS X v10.4.x are different. Any differences are noted in the following sections.

### Setting up printing with Mac OS X v10.5

Use the following steps for setting up the EFI Splash RPX-iii on a computer with Mac OS X v10.5.

---

#### TO SET UP THE EFI SPLASH RPX-iii FROM THE PRINT DIALOG BOX

- 1 **Open a file in your application.**
- 2 **Choose Print from the File menu.**

The Print dialog box appears.

- 3 **Select the EFI Splash RPX-iii from the Printer list.**

For information about selecting the EFI Splash RPX-iii as the default printer, see [page 24](#).

---

#### TO SET UP THE EFI SPLASH RPX-iii USING PRINT & FAX

- 1 **Choose System Preferences from the Apple menu and then choose Print & Fax.**

The Print & Fax dialog box appears.

- 2 **Click the “+” button to add a printer.**

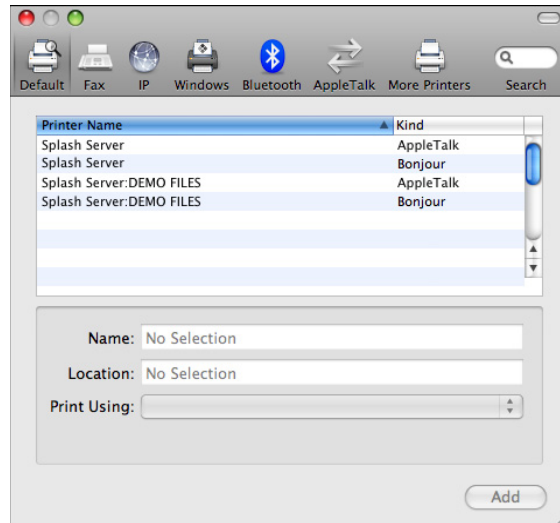
In the dialog box that appears, select a printer connection. Use one of the following connections to add a printer.

Printing connection	See
Default (Bonjour or AppleTalk)	<a href="#">page 11</a>
IP Printer	<a href="#">page 12</a>
AppleTalk	<a href="#">page 14</a>

---

**TO ADD A PRINTER WITH THE DEFAULT (BONJOUR OR APPLETALK) CONNECTION****1 Click the Default icon in the dialog box.**

The Default pane appears.



The names of printers with default connections are listed. The Virtual Printers that are configured at the EFI Splash RPX-iii are also listed.

**NOTE:** The names of the Virtual Printers appear as <printer name:Virtual Printer name> in the Printer Name list.

**2 Select the EFI Splash RPX-iii from the list.**

The information about the selected printer appears at the bottom of the Default pane. The appropriate PPD file for the EFI Splash RPX-iii is automatically selected. If your server administrator configured the Secure Access printing at the EFI Splash RPX-iii, the PPD file for Secure Access printing is selected.

**3 Click Add.****4 In the Installable Options pane, select the option items that are installed at the digital press, and then click Continue.**

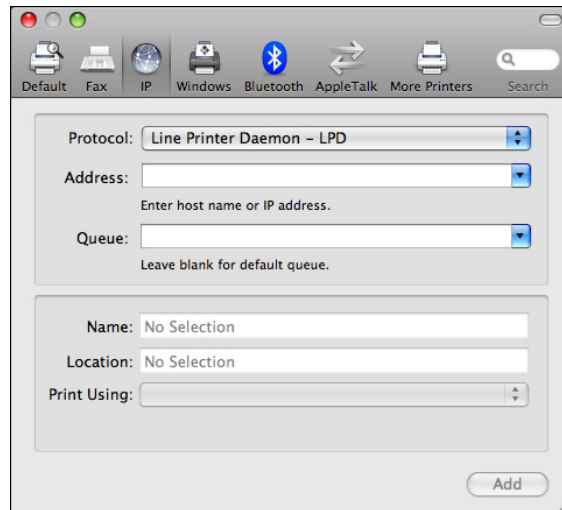
The EFI Splash RPX-iii name appears in the Printer List.

---

**TO ADD A PRINTER WITH THE IP PRINTER CONNECTION**

- 1 Click the IP icon in the dialog box.

The IP pane appears.



- 2 Select Line Printer Daemon - LPD from the Protocol list and type the EFI Splash RPX-iii IP address.

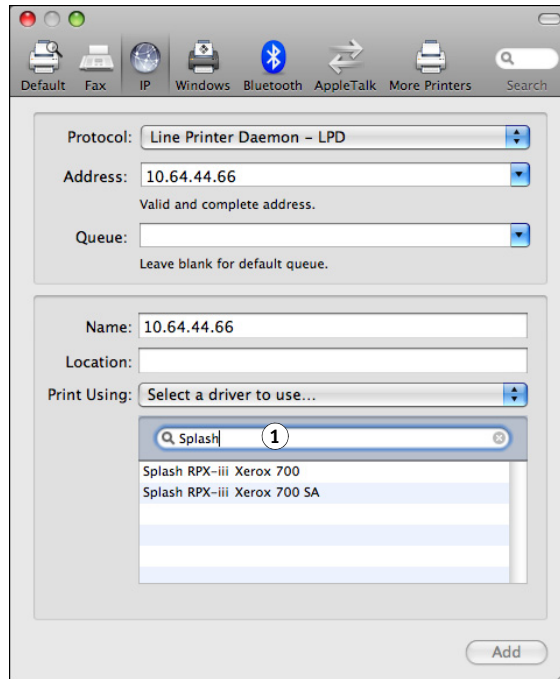
The IP address appears in the Name field.

- 3 Type the Virtual Printer name in the Queue field or leave it blank for the default queue.

- 4 In the Print Using area, type “Splash” in the filter to narrow the search, and then select Splash RPX-iii Xerox 700 from the list.

The “Select a driver to use” pane appears in the dialog box.

- 1 Search filter to narrow search field



- 5 Select the PPD file from the list and click Add.

For more information, see [“Selecting the PPD file”](#) on page 22.

- 6 In the Installable Options pane, select the option items that are installed at the digital press, and then click Continue.

The EFI Splash RPX-iii with its IP address appears in the Printer List.

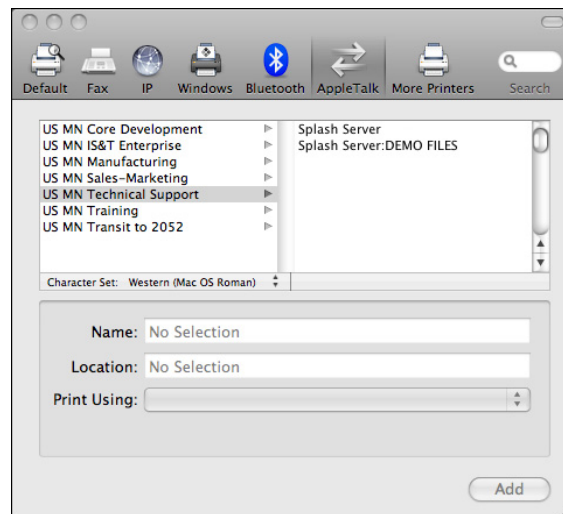
---

**TO ADD A PRINTER WITH THE APPLE TALK CONNECTION**

**NOTE:** Use this procedure if the EFI Splash RPX-iii is in a different AppleTalk zone than your computer. If the EFI Splash RPX-iii is in the same zone, it is displayed as a default following the procedure on [page 11](#).

**1 Click the AppleTalk icon in the dialog box.**

The AppleTalk pane appears.

**2 Select the AppleTalk zone for the EFI Splash RPX-iii from the list.**

The AppleTalk printers in the specified zone are listed. The Virtual Printers that are configured at the EFI Splash RPX-iii are also listed.

**NOTE:** The names of the Virtual Printers appear as <printer name:Virtual Printer name> in the Name list.

**3 Select the EFI Splash RPX-iii name in the Printer list and click Add.****4 In the Installable Options pane, select the option items that are installed at the digital press, and then click Continue.**

The EFI Splash RPX-iii name appears in the Printer List.

## Setting up printing with Mac OS X v10.4.x

Use the following steps for setting up the EFI Splash RPX-iii on a computer with Mac OS X v10.4.x.

---

### TO SET UP THE EFI SPLASH RPX-iii FROM THE PRINT DIALOG BOX

- 1 **Open a file in your application.**
- 2 **Choose Print from the File menu.**

The Print dialog box appears.
- 3 **Select the EFI Splash RPX-iii from the Printer:Bonjour Printers list.**

For information about selecting the EFI Splash RPX-iii as the default printer, see [page 24](#).

---

### TO SET UP THE EFI SPLASH RPX-iii USING PRINTER SETUP UTILITY

- 1 **Choose Utilities from the Go menu.**
- 2 **Start Printer Setup Utility.**

The Printer List dialog box appears.

- 3 **Click Add.**

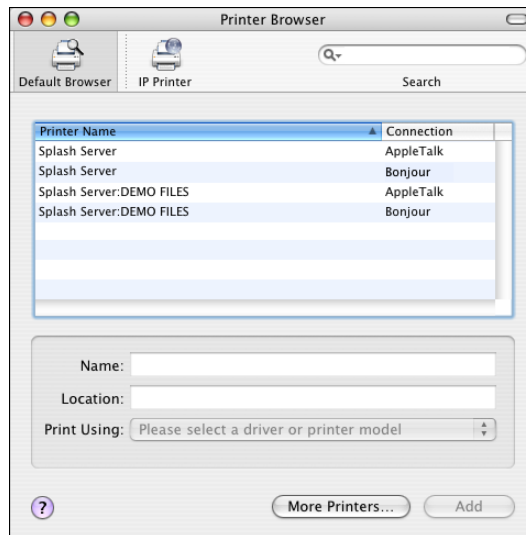
The Printer Browser dialog box appears. Use one of the following connections to add a printer.

Printing connection	See
Default Browser (Bonjour or AppleTalk)	<a href="#">page 16</a>
IP Printer	<a href="#">page 17</a>
AppleTalk	<a href="#">page 19</a>

---

**TO ADD A PRINTER WITH THE DEFAULT BROWSER (BONJOUR OR APPLE TALK) CONNECTION****1 Click Default Browser in the Printer Browser dialog box.**

The Default Browser pane appears.



The names of printers with default connections are listed. The Virtual Printers that are configured at the EFI Splash RPX-iii are also listed.

**NOTE:** The names of the Virtual Printers appear as <printer name:Virtual Printer name> in the Name list.

**2 Select the EFI Splash RPX-iii from the list.**

The information about the selected printer appears at the bottom of the Default Browser pane. The appropriate PPD file for the EFI Splash RPX-iii is automatically selected. If your server administrator configured the Secure Access printing at the EFI Splash RPX-iii, the PPD file for Secure Access printing is selected.

**3 Click Add.****4 In the Installable Options pane, select the option items that are installed at the digital press, and then click Continue.**

The EFI Splash RPX-iii name appears in the Printer List.

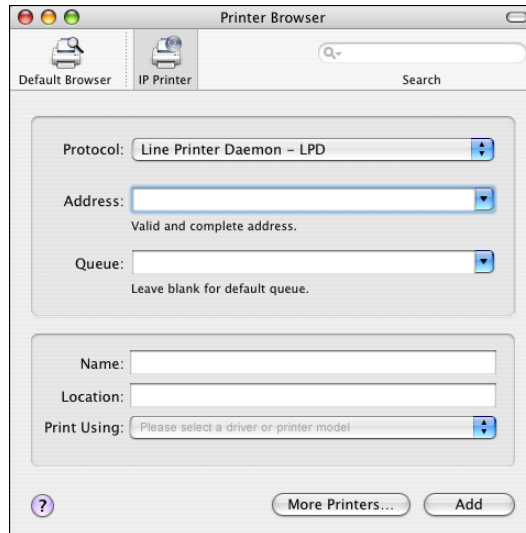


---

**TO ADD A PRINTER WITH THE IP PRINTER CONNECTION**

- 1 Click IP Printer in the Printer Browser dialog box.

The IP Printer pane appears.



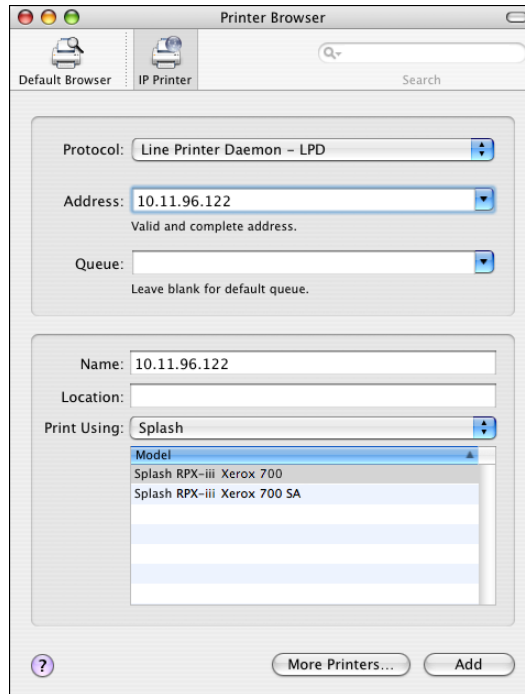
- 2 Select Line Printer Daemon - LPD from the Protocol list and type the EFI Splash RPX-iii IP address.

The IP address appears in the Name field.

- 3 Type the Virtual Printer name in the Queue field or leave it blank for the default queue.

**4 Select Splash from the Print Using list.**

The Model pane appears in the dialog box.

**5 Select the PPD file from the Model list and click Add.**

For more information, see [“Selecting the PPD file”](#) on page 22.

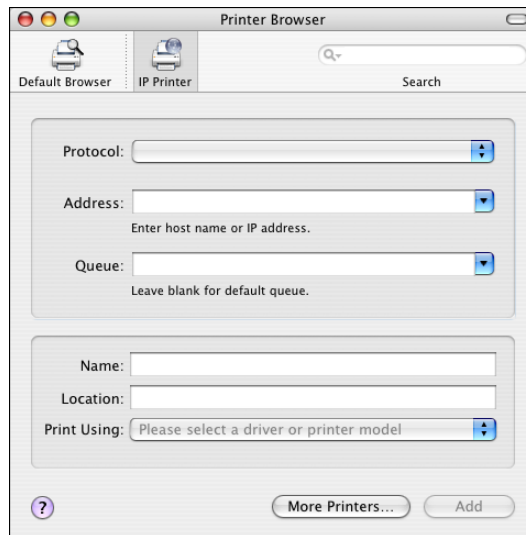
**6 In the Installable Options pane, select the option items that are installed at the digital press, and then click Continue.**

The EFI Splash RPX-iii with its IP address appears in the Printer List.

---

**TO ADD A PRINTER WITH THE APPLE TALK CONNECTION**

**NOTE:** Use this procedure if the EFI Splash RPX-iii is in a different AppleTalk zone than your computer. If the EFI Splash RPX-iii is in the same zone, it is displayed as a default following the procedure on [page 16](#).

**1 Click Default Browser or IP Printer in the Printer Browser dialog box.****2 Click More Printers.**

The dialog box with a pop-up list of other connections appears.

**3 Select AppleTalk from the connection list.**

The AppleTalk pane appears.

**4 Select the AppleTalk zone for the EFI Splash RPX-iii from the pop-up list.**

The AppleTalk printers in the specified zone are listed. The Virtual Printers that are configured at the EFI Splash RPX-iii are also listed.

**NOTE:** The names of the Virtual Printers appear as <printer name:Virtual Printer name> in the Name list.

**5 Select the EFI Splash RPX-iii name in the Name list and click Add.****6 In the Installable Options pane, select the option items that are installed at the digital press, and then click Continue.**

The EFI Splash RPX-iii name appears in the Printer List.

## Configuring Installable Options

To use the print options for the digital press and EFI Splash RPX-iii appropriately, you must configure the EFI Splash RPX-iii from your computer for the options that are installed on the digital press. Configure the options manually, or for TCP/IP network connections, use the Two-Way Communication feature to configure the options automatically. For the list of the available options, see [page 84](#).

The following procedures describe how to manually configure the EFI Splash RPX-iii. For information about configuring the installed options automatically or manually from the Accessories pane in the Print dialog box, see [page 33](#).

**NOTE:** When you configure installable options manually, be sure to match the actual configuration of the digital press. Otherwise, the print options shown in the printer driver might not match the print options actually available.

---

### TO CONFIGURE INSTALLABLE OPTIONS USING PRINT & FAX ON MAC OS X V10.5

- 1 Choose System Preferences from the Apple menu and then choose Print & Fax.

The Print & Fax dialog box appears.

- 2 In the Printer List, select EFI Splash RPX-iii and click Options & Supplies.
- 3 Click the Driver tab.
- 4 Select the option items that are installed at the digital press.

**NOTE:** You must specify the Finisher and the Trays in the Accessories tab of the Splash Features in the printer driver. For information about the Accessories tab, see [page 33](#).

- 5 Click OK to apply changes.

---

### TO CONFIGURE INSTALLABLE OPTIONS USING PRINTER SETUP UTILITY ON MAC OS X V10.4.x

- 1 Choose Utilities from the Go menu.
- 2 Double-click the Printer Setup Utility icon.
- 3 In the Printer List, select EFI Splash RPX-iii and click the Show Info icon.
- 4 Click Name and Location and choose Installable Options.
- 5 Select the option items that are installed at the digital press.

**NOTE:** You must specify the Finisher and the Trays in the Accessories tab of the Splash Features in the printer driver. For information about the Accessories tab, see [page 33](#).

- 6 Click Apply Changes.
- 7 Close the window.

## Using the Virtual Printers

The Virtual Printers feature allows you to send your jobs to the Virtual Printer print queues that are set up at the EFI Splash RPX-iii with some specific print option settings. When printing to a Virtual Printer, some of the settings selected from the printer driver are overridden by the Virtual Printer settings.

This section provides an overview of how to enable and use the Virtual Printers. The setup of the Virtual Printers must be performed by your server administrator at the EFI Splash RPX-iii before you use the Virtual Printers as your printers.

For more information about Virtual Printers, see the [Job Management Guide](#).

---

### TO ENABLE AND USE A VIRTUAL PRINTER

#### 1 Enable the Virtual Printers feature at the EFI Splash RPX-iii.

To use the Virtual Printers feature, the following option must be enabled at the EFI Splash RPX-iii by your server administrator.

- If AppleTalk Registration in the Splash Server Preferences > Network pane is enabled, you can access the Virtual Printers as AppleTalk printers.
- If Enterprise Networking in the Splash Server Preferences > Network pane is enabled, you can access the Virtual Printers as LPR printers.

For more information about Preferences, see the [Configuration Guide](#).

#### 2 Create a Virtual Printer at the EFI Splash RPX-iii.

For information, see the [Job Management Guide](#).

#### 3 At the client workstation, start Print & Fax for Mac OS X v10.5 or Printer Setup Utility for Mac OS X v10.4.x and set up a Virtual Printer for printing.

For more information, see “Setting up printing with Mac OS X v10.5” on page 10 and “Setting up printing with Mac OS X v10.4.x” on page 15.

#### 4 Select the Virtual Printer in the Printer List dialog box.

For more information, see “Selecting the EFI Splash RPX-iii in the Printer List” on page 23.

#### 5 Open a file in your application and print your job to the Virtual Printer.

When you send your job to a Virtual Printer, a set of print options that are configured for the Virtual Printer is applied. For more information, see the [Job Management Guide](#).

## Selecting the PPD file

The PPD files that are provided for the EFI Splash RPX-iii are as follows:

- **Splash RPX-iii Xerox 700** for standard printing
- **Splash RPX-iii Xerox 700 SA** for Secure Access printing

**NOTE:** If your server administrator has configured Secure Access printing at the EFI Splash RPX-iii, select the PPD file for Secure Access printing. For more information about Secure Access, see [page 98](#) and the *Job Management Guide*.

## Using Desktop Printer (optional)

After adding EFI Splash RPX-iii in the Printer List in either Print & Fax or the Printer Setup Utility, you can create and use the Desktop Printer feature.

---

### TO CREATE A DESKTOP PRINTER WITH MAC OS X v10.5

- 1 Choose System Preferences from the Apple menu and then choose Print & Fax.
- 2 Select EFI Splash RPX-iii from the Printer List, and drag and drop it on the desktop.

You can now print a file to the EFI Splash RPX-iii by dragging the file to the EFI Splash RPX-iii desktop printer icon.

---

### TO CREATE A DESKTOP PRINTER WITH MAC OS X v10.4.x

- 1 Choose utilities from the Go menu and open the Printer Setup Utility.
- 2 Select EFI Splash RPX-iii from the Printer List.
- 3 Choose Create Desktop Printer from the Printers menu.
- 4 Specify a name and location for the desktop printer and click Save.

You can now print a file to the EFI Splash RPX-iii by dragging the file to the EFI Splash RPX-iii desktop printer icon.

## Printing from Mac OS X computers

You can print to the EFI Splash RPX-iii just as you would print to any other printer from a Mac OS X application. Select the EFI Splash RPX-iii as the current printer in the Printer List and print the file from within the application.

After you install the EFI Splash RPX-iii printer driver files and set up the EFI Splash RPX-iii for printing, you can print from most Mac OS X applications. Using the appropriate PPD file, you can control the EFI Splash RPX-iii printing features by specifying print options from the Print dialog boxes. For more information about the EFI Splash RPX-iii print options, see [page 72](#).

### Selecting the EFI Splash RPX-iii in the Printer List

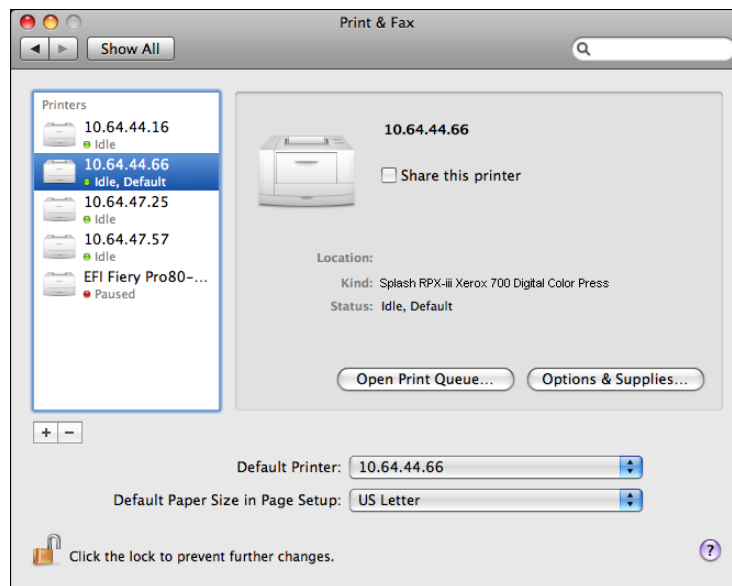
Before you print a job, you must select the EFI Splash RPX-iii from the Printer List. Use the following procedure to select the EFI Splash RPX-iii as your default printer.

---

#### TO SELECT THE EFI SPLASH RPX-iii AS THE DEFAULT PRINTER WITH MAC OS X v10.5

- 1 Make sure that the EFI Splash RPX-iii is connected to the network and turned on.
- 2 Choose System Preferences from the Apple menu and then choose Print & Fax.

The Print & Fax dialog box appears.



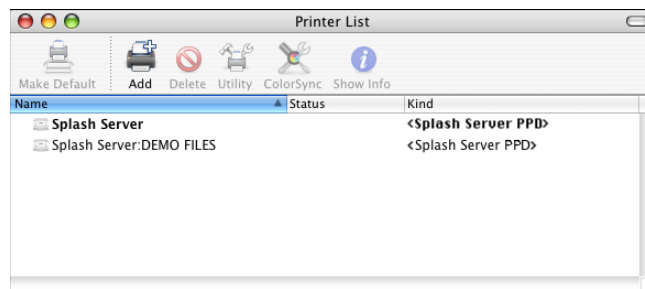
The printers that are set up for printing are listed. The Virtual Printers that are configured at the EFI Splash RPX-iii and set up for printing are also listed.

- 3 To make the EFI Splash RPX-iii the default printer, select it from the Default Printer menu.
- 4 Close the window.

### TO SELECT THE EFI SPLASH RPX-iii AS THE DEFAULT PRINTER WITH MAC OS X v10.4.x

- 1 Make sure that the EFI Splash RPX-iii is connected to the network and turned on.
- 2 Choose Utilities from the Go menu.
- 3 Start Printer Setup Utility.

The Printer List dialog box appears.



The printers that are set up for printing are listed. The Virtual Printers that are configured at the EFI Splash RPX-iii and set up for printing are also listed.

- 4 Select the EFI Splash RPX-iii in the Printer List to specify it as your current printer.
- 5 Click the Make Default icon.

The EFI Splash RPX-iii is now your default printer.

## Setting print options from Mac OS X

The EFI Splash RPX-iii print options are set from the Print dialog box within most Mac OS X applications. For a table of all print options and detailed information about some print options, see [“Print Options”](#) on page 72.

**NOTE:** Some default settings are set by your server administrator during EFI Splash RPX-iii Setup. For information about the current EFI Splash RPX-iii default settings, contact your server administrator.

**NOTE:** When you send your job to a Virtual Printer, a set of print options that are configured for the Virtual Printer is applied, overriding your selection in the printer driver. For more information about Virtual Printers, see the [Job Management Guide](#).

**NOTE:** Some print options that are selectable from the printer driver or an application are the same or similar to print options that are specific to the EFI Splash RPX-iii. In these cases, use the print options specific to the EFI Splash RPX-iii. The printer driver or an application may not set up the file properly for printing on the EFI Splash RPX-iii, resulting in unexpected printing errors and longer processing time.

Use the following procedures to set print options from your Mac OS X computer.

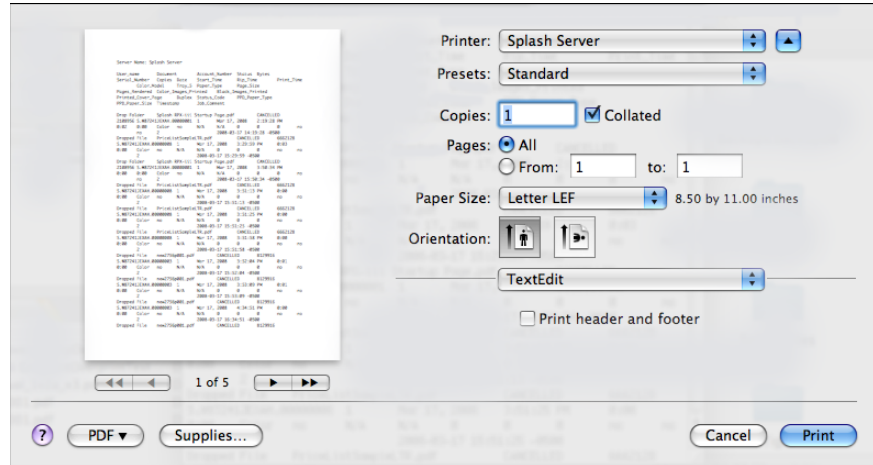
**NOTE:** The following procedures use Mac OS X v10.5 illustrations.



**TO SET THE PRINT OPTIONS FROM MAC OS X**

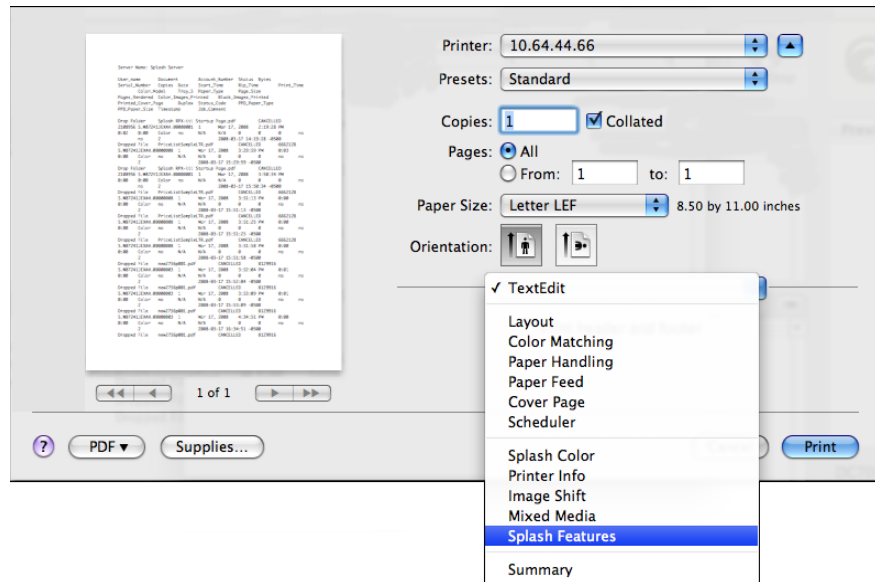
- 1 Open a file in your application.
- 2 Choose Print from the File menu.

The Print dialog box appears.



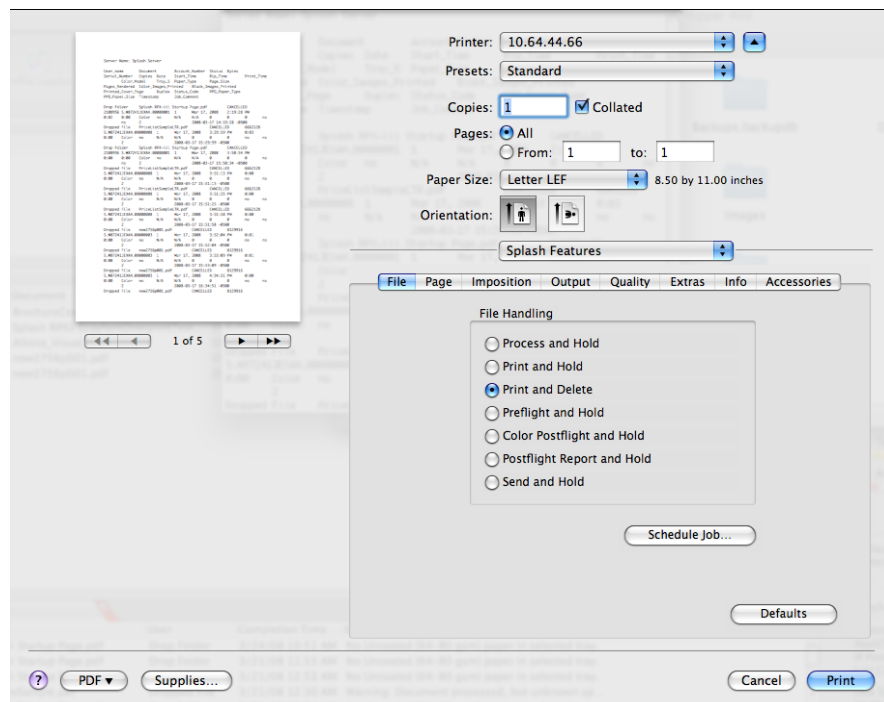
- 3 Select the EFI Splash RPX-iii from the Printer list.

#### 4 Select Splash Features from the pull-down menu.



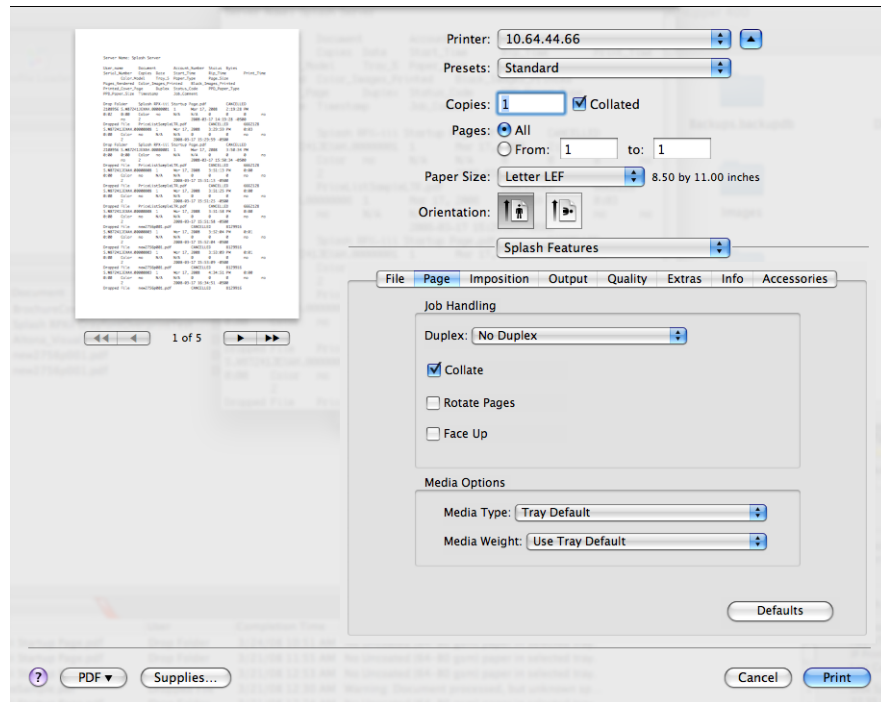
The Splash Features pane appears, listing the following print option groups:

- Click the **File** tab to specify file handling and scheduling options.



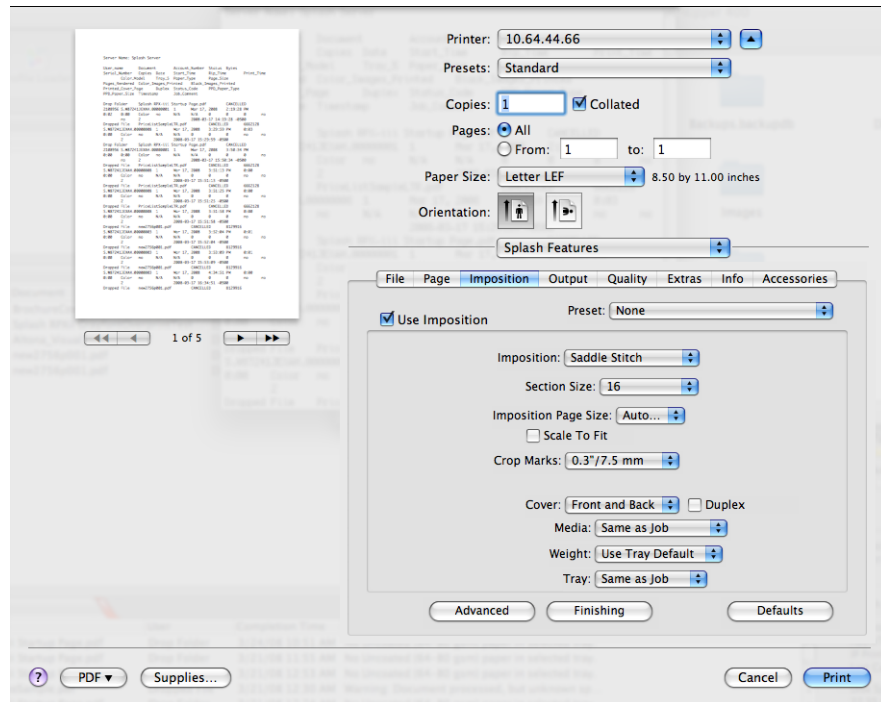
For more information, see the table on [page 74](#) and “[File Handling](#)” on [page 90](#).

- Click the **Page** tab to specify job handling and media options.



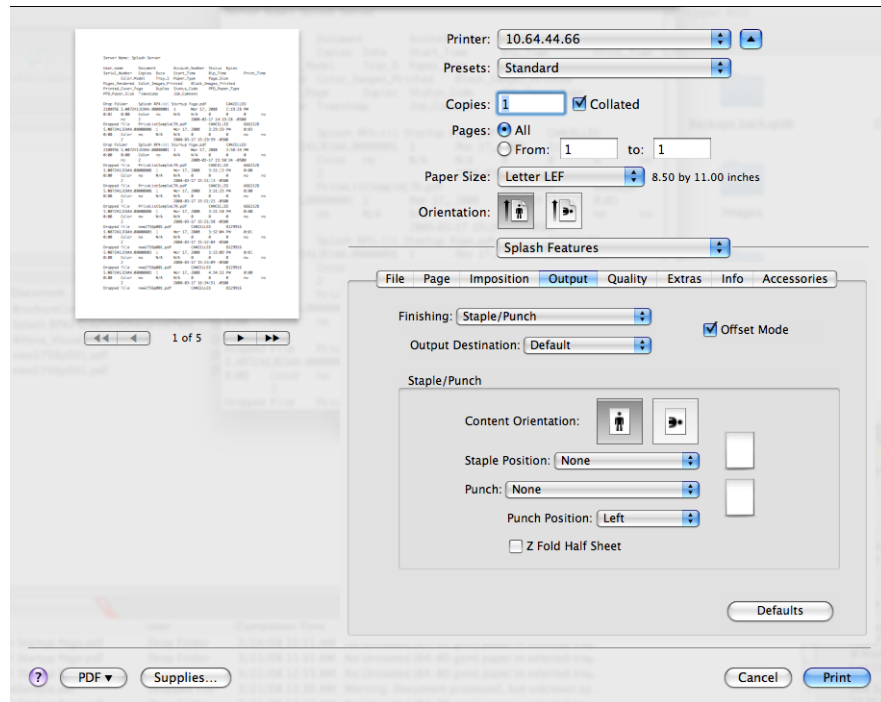
For more information, see the table on [page 75](#) and “[Job Handling](#)” on page 91.

- Click the **Imposition** tab to specify page layout and media server options.



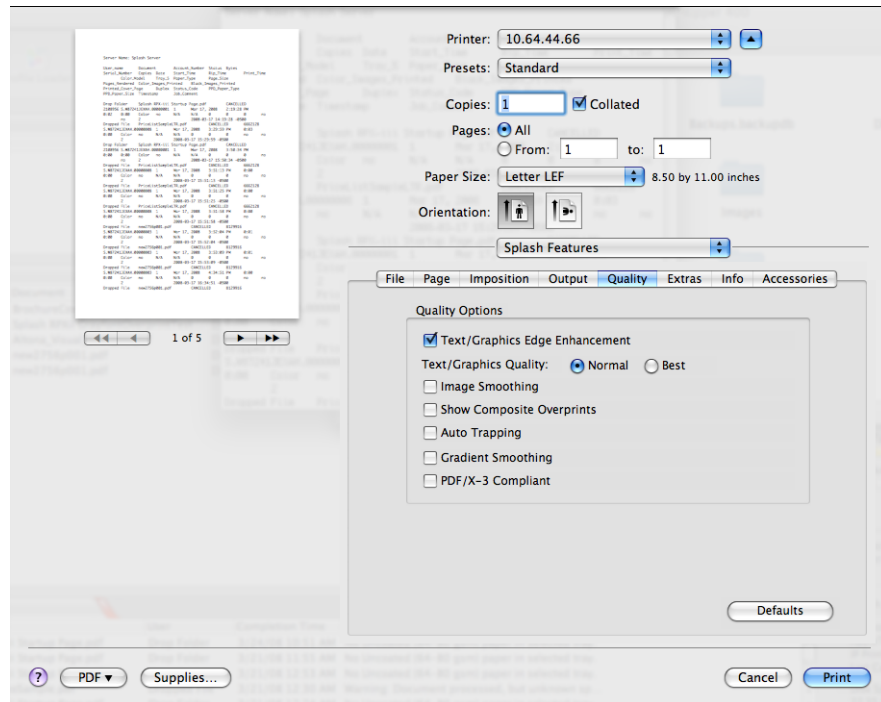
For more information about Imposition, see the table on [page 75](#) and the *Job Management Guide*.

- Click the Output tab to specify output tray and finishing options.



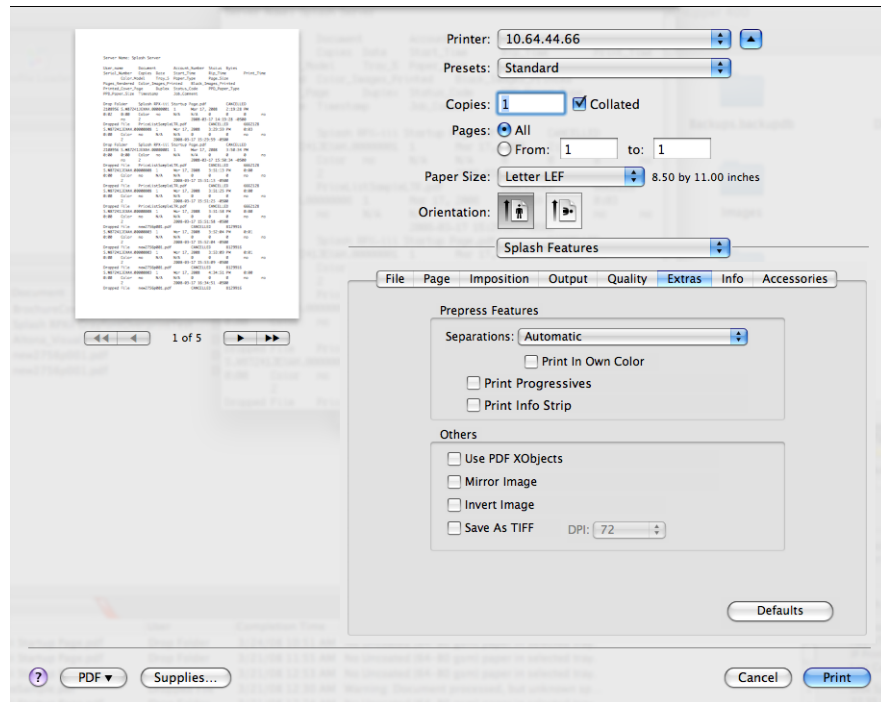
For more information, see the table on [page 79](#).

- Click the Quality tab to specify quality options.



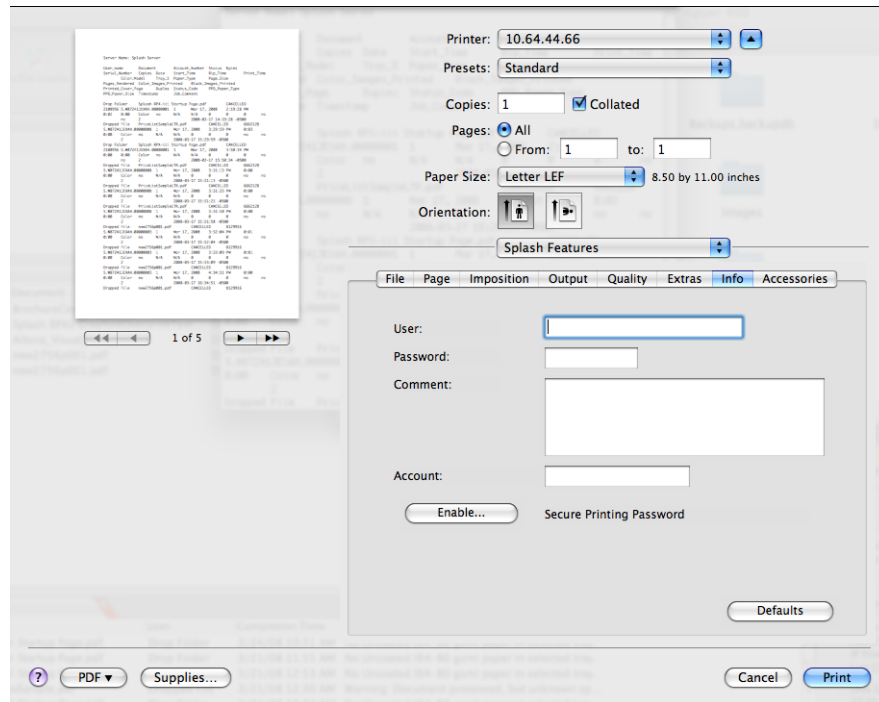
For more information, see the table on [page 81](#) and the [Color Guide](#).

- Click the Extras tab to specify prepress options.



For more information, see the table on [page 82](#) and the [Color Guide](#).

- Click the Info tab.



Type the following information:

- User
- Password
- Account

For more information, see the table on [page 83](#).

**NOTE:** The information in this pane can be entered for Secure Access or standard printing. If Secure Access is configured at the EFI Splash RPX-iii and the required information is not provided before you click Print, you are prompted to do so when you click Print. Contact your server administrator for the required information. For more information, see “[Secure Access](#)” on page 98 and the *[Job Management Guide](#)*.

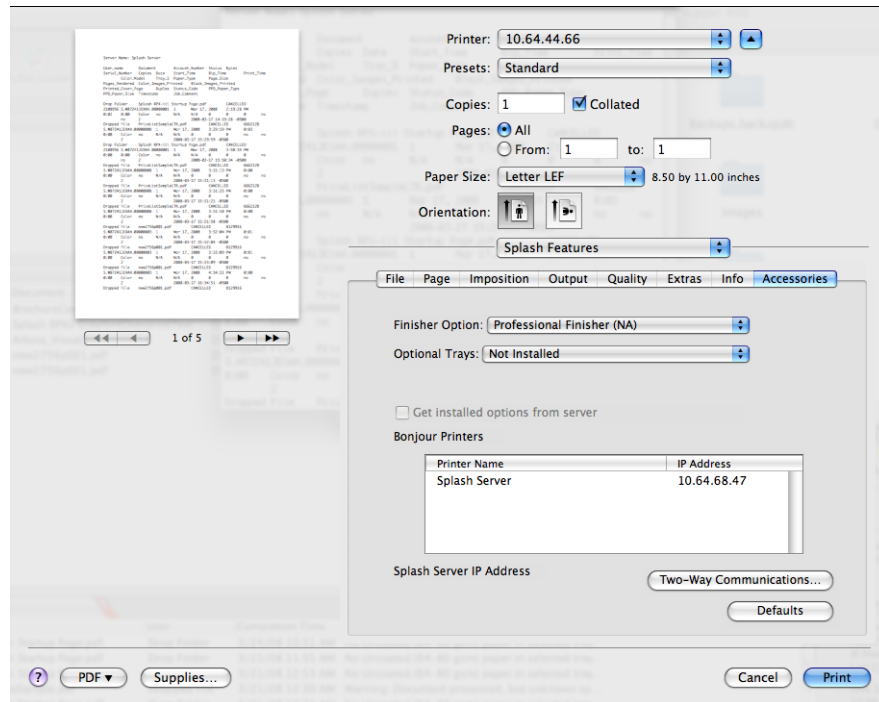
**Click Enable to use the Secure Printing feature.**

The Secure Printing dialog box appears.

**Type your password to send your job as a Secure Printing job and click OK.**



- Click the Accessories tab to configure the installable options.



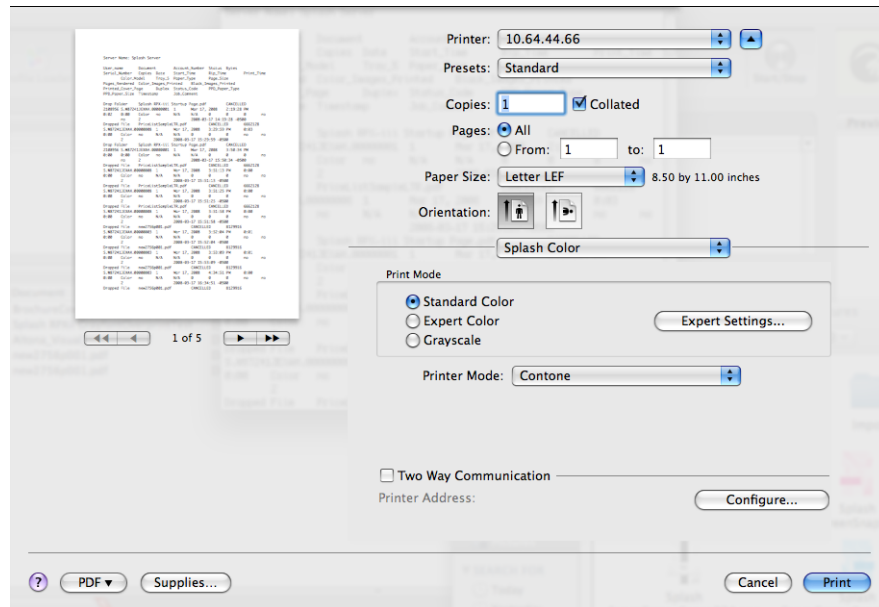
To configure the installed options automatically, select the Get installed options from server option. To configure the options manually, select the installed items on the digital press from the Finisher and Optional Trays options.

**NOTE:** When you configure installable options manually, be sure to match the configuration of the EFI Splash RPX-iii and the digital press. Otherwise, the print options in the printer driver may not match the print options actually available.

For more information, see the table on [page 84](#).

**NOTE:** You must select the Finisher Option and the Trays on the Accessories tab after you install the EFI Splash RPX-iii printer driver.

## 5 Select Splash Color from the pull-down menu.



Specify the Print Mode and Printer Mode options.

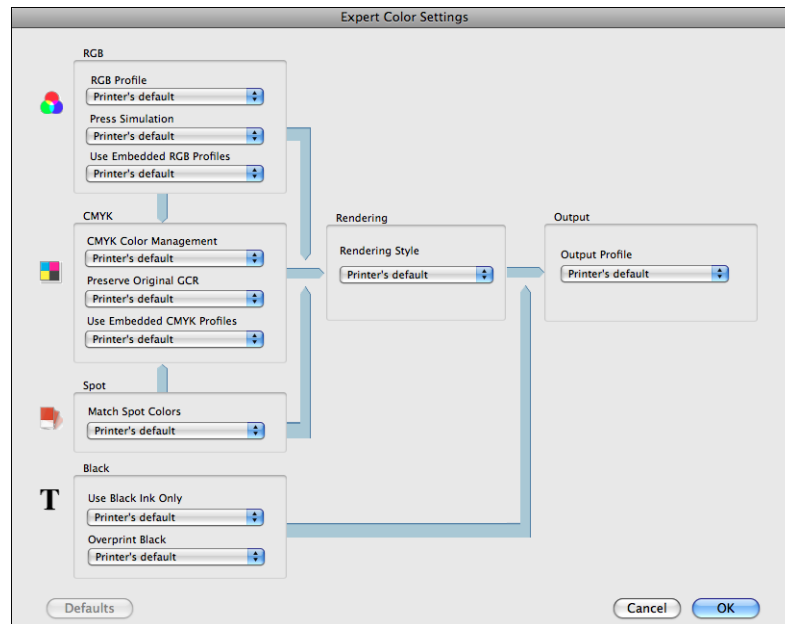
Use Standard Color to print your job with the current default color settings at the EFI Splash RPX-iii.

**Click Expert Settings to specify the color settings.**

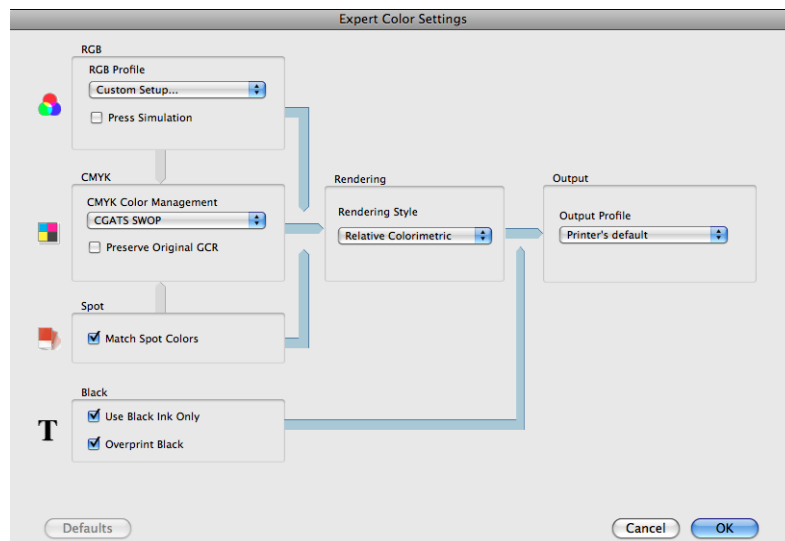
The Expert Color Settings dialog box displays the color settings differently, depending on whether or not the Two-Way Communication option is selected.

**NOTE:** To view the current color settings at the EFI Splash RPX-iii, you must enable the Two-Way Communication option. For more information, see [“Enabling Two-Way Communication”](#) on page 38.

### Two-Way Communication: Off



### Two-Way Communication: On



**NOTE:** The initial values reflect the current color settings that are set in Edit Defaults at the EFI Splash RPX-iii.

For information about the color options, see the table on [page 85](#) and the [Color Guide](#).

## 6 Select Paper Feed from the pull-down menu and select the appropriate tray.

For information about tray options, see the table on [page 88](#) and “[Tray Selection](#)” on page 95.

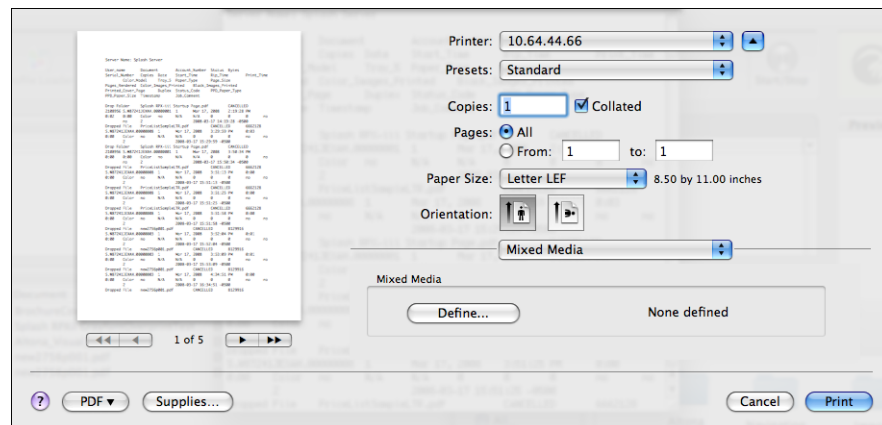
## 7 Select Printer Info from the pull-down menu.

**NOTE:** To view the digital press information, the Two-Way Communication option must be selected. For more information, see “[Enabling Two-Way Communication](#)” on page 38.

In the Printer Info pane, you can view the following information about the digital press:

- Status
- Paper Tray Info
- Toner Levels

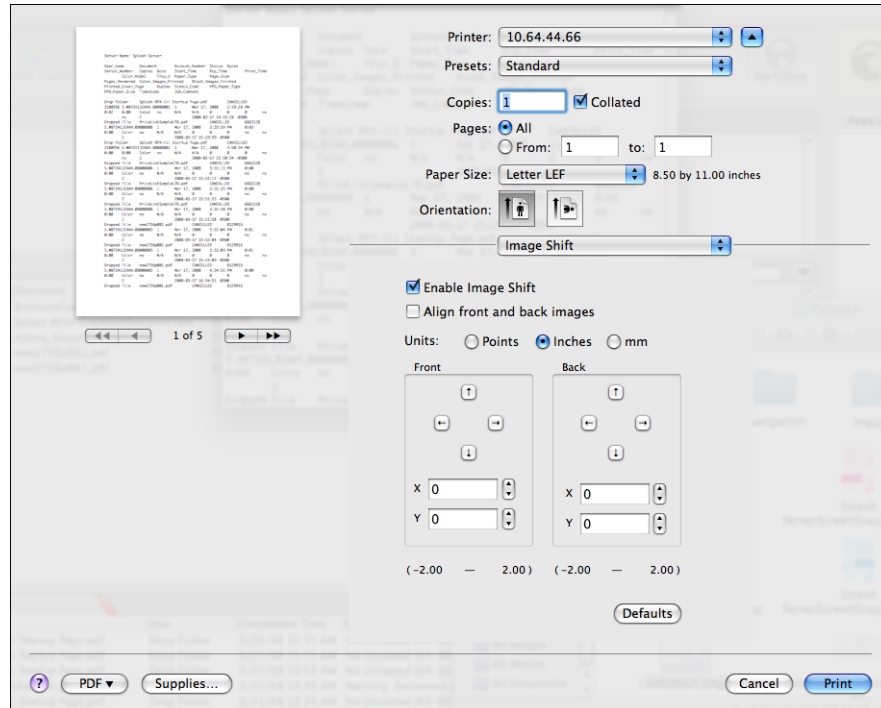
## 8 Choose Mixed Media from the pull-down menu.



In this pane, click Define and specify the Mixed Media options.

For more information about Mixed Media, see the [Job Management Guide](#).

**9 Select Image Shift from the pull-down menu.**



In this pane, select Enable Image Shift and specify the Image Shift options.

**10 Click Print.**

## Enabling Two-Way Communication

The Two-Way Communication option allows you to retrieve information such as the current color settings or the status of the digital press from the EFI Splash RPX-iii.

The Two-Way Communication option can be enabled at the following panes:

- Splash Features:Accessories
- Splash Color
- Printer Info

Use the following procedure to enable the Two-Way Communication option in the Print dialog box.

---

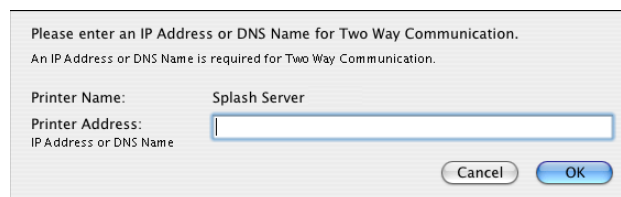
### TO ENABLE TWO-WAY COMMUNICATION

- 1 **Choose Splash Features from the pull-down menu, click Accessories, and then click Bi-Di Communications.**

**Or choose Splash Color from the pull-down menu, select Two-Way Communication, and then click Configure.**

**Or choose Printer Info from the pull-down menu and click Configure.**

A dialog box prompts you for an IP address.



Please enter an IP Address or DNS Name for Two Way Communication.  
An IP Address or DNS Name is required for Two Way Communication.

Printer Name: Splash Server

Printer Address:   
IP Address or DNS Name

Cancel OK

- 2 **Type the EFI Splash RPX-iii IP address in the Printer Address field.**
- 3 **Click OK.**

## Defining custom page sizes from Mac OS X

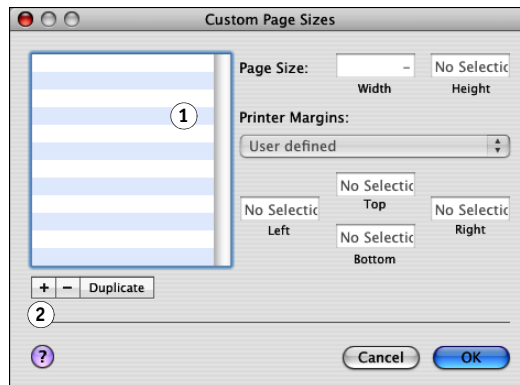
You can define a new custom page size in the Custom Page pane of the Page Setup dialog box. With custom page sizes, you define page dimensions and margins. After you define a custom page size, you can use it from within an application without redefining it each time you print.

**NOTE:** If you specify dimensions that match a particular regular page size, the EFI Splash RPX-iii processes the job as a regular page size job.

### TO DEFINE A CUSTOM PAGE SIZE FROM MAC OS X

- 1 Open a file in your application.
- 2 Choose Page Setup from the File menu.
- 3 Choose Manage Custom Sizes from the Paper Size menu.

- 1 Custom page names
- 2 "+" button



- 4 Click the "+" button.
- 5 Double-click the default custom page name and type a new name.
- 6 Specify the page dimensions and margins.

You can print custom page sizes with the following dimensions:

- **Width:** 3.94 to 13 inches (100 to 330.2 mm)
- **Height:** 5.83 to 19.2 inches (148 to 488 mm).

You can create a custom page size as small as 0.25 inches (6.35 mm).

You can impose custom page sizes smaller than 3.94 x 5.83 inches (100 x 148 mm) but they cannot be printed.

The Custom Page Size feature supports margins of 0.16 inch (4.0 mm).

The printer driver allows you to define custom page sizes with 0 margins. This is useful for imposition. If you print a custom page size, margins of 0.16 inch (4.0 mm) are used on all sides.

**NOTE:** If you define a custom paper size that is larger or smaller than the numbers previously listed, the Mac OS X printer driver substitutes it with the default page size without warning.

**7 Click OK.**

The custom page size you defined is added to the list of Paper Size selections in the Page Setup dialog box.

---

**TO EDIT A SAVED CUSTOM PAGE SIZE**

- 1 Open a file in your application.
- 2 Choose Page Setup from the File menu.
- 3 Choose Manage Custom Sizes from the Page Size menu.
- 4 Select the custom page size name.
- 5 Edit the page dimensions and margins.
- 6 Replace the existing custom page name by clicking it.
- 7 Click OK.

---

**TO DELETE A CUSTOM PAGE SIZE**

- 1 Open a file in your application.
- 2 Choose Page Setup from the File menu.
- 3 Choose Manage Custom Sizes from the Page Size menu.
- 4 Click the custom paper size name.
- 5 Click the “-” button and click OK.

---

**TO MAKE A COPY OF THE CUSTOM PAGE SIZE**

- 1 Open a file in your application.
- 2 Choose Page Setup from the File menu.
- 3 Choose Manage Custom Sizes from the Page Size menu.
- 4 Click the custom paper size name.
- 5 Click Duplicate and click OK.



## Installing the Splash Status widget

EFI Splash RPX-iii provides Print and Printer Status widgets to allow users to track printing jobs and view tray information from their desktop on Mac OS X v10.5 and Mac OS X v10.4 clients.

The following sections describe how to install the Splash Widget on a Mac OS X v10.5 or Mac OS X v10.4 client.

---

### TO DOWNLOAD AND INSTALL THE SPLASH WIDGET ON A MAC OS X CLIENT

**NOTE:** Web Sharing must be enabled to view the Splash Server Management dialog box. For more information about Web Sharing, see the [Configuration Guide](#).

- 1 Start your Internet browser.**
- 2 Type the EFI Splash RPX-iii IP address and press Enter.**  
The Splash Server Management web page appears.
- 3 Click Downloads in the upper right-hand corner of the web page.**
- 4 Click Splash Installer Downloads.**
- 5 Click SplashWidgetsAndGadgets.zip and save the file to your desktop.**
- 6 Expand the archive.**
- 7 Open the Splash Widgets and Gadgets folder.**
- 8 Open the Mac folder and double-click the Splash Status installer.**

The Widget Installer window appears.

- 9 Click Install to install the Splash Status widget.**

After the widget installation is completed, the Splash Status widget will not be listed in the OS X folder.

Now you are ready to configure the Splash Status widget.

---

**TO CONFIGURE THE SPLASH STATUS WIDGET ON A MAC OS X CLIENT**

- 1 To access the Splash Status widget, press the F12 key on the keyboard or click the Dashboard icon in the Dock.

The Splash Status widget window appears.



- 2 Click the “i” in the lower-right corner to configure the Splash Status widget with the TCP/IP address or Splash Server DNS name that will be monitored.

The Splash Widget Configuration window appears.

- 3 Type the TCP/IP address of the Splash Server.
- 4 Select Copier Status or Active Jobs from the Info list that the dashboard will display.
  - **Copier Status** displays information about the paper tray contents and how much paper is loaded in each tray, along with up to three digital press error messages or warnings.
  - **Active Jobs** provides the current status information for the top five jobs in the Active queue, along with a count of how many jobs are currently in the Active queue.
- 5 Select the amount of time the widget will refresh from the Refresh Every list.

The refresh rate is 5 seconds to 1 hour. The default is 15 seconds.

**NOTE:** Widgets only refresh when they are visible on the screen. They do not generate any network traffic when they are in use.

- 6 Click Done when the configuration is finished.

Now you are ready to use the Splash Status widget.

---

**TO USE THE SPLASH STATUS WIDGET ON A MAC OS X CLIENT**

- 1 If Active Jobs was selected during the widget configuration, jobs are displayed as they arrive in the Active queue.

If Copier Status was selected during the widget configuration, toner levels, paper levels and the printer’s status are listed.

- 2 Drag the widget to move it to another location on the screen.
- 3 Press F12 on the keyboard to close the widget.

## PRINTING FROM WINDOWS

To print a job from your Windows computer to the EFI Splash RPX-iii, you must set up the printing connections and add a printer to set up the EFI Splash RPX-iii for printing. The printer driver files are provided on the EFI Splash RPX-iii User Software and Documentation DVD or can be downloaded directly from the EFI Splash RPX-iii over the network.

See the following table for each procedure.

Procedure	See
Adding a printer with the TCP/IP printing connection	<a href="#">page 43</a>
Adding a printer with the SMB printing connection	<a href="#">page 50</a>
Printing from Windows computers	<a href="#">page 54</a>
Installing the Splash Status widget	<a href="#">page 69</a>

### Adding a printer with the TCP/IP printing connection

Before you print a job to the EFI Splash RPX-iii, you must set up a printing connection and add a printer. This section describes the procedures for setting up the TCP/IP printing connection and setting up the EFI Splash RPX-iii for printing with the files on the EFI Splash RPX-iii User Software and Documentation DVD or files that are downloaded from the EFI Splash RPX-iii.

See the following table for each procedure.

Procedure	See
Preparing the Windows printer files	<a href="#">page 43</a>
Setting up the TCP/IP printing connection	<a href="#">page 45</a>
Setting up the EFI Splash RPX-iii for printing	<a href="#">page 48</a>

### Preparing the Windows printer files

You must have the Windows printer files ready before setting up the TCP/IP printing connection. After you complete the Setup procedure for the printing connection, you are prompted to point to the location of the printer files.

### Preparing the printer files on the DVD

The EFI Splash RPX-iii User Software and Documentation DVD provides the following printer files for the EFI Splash RPX-iii:

- PostScript Printer Driver: Enables communication between your Windows 2000/XP/Server 2003/Vista computer, the EFI Splash RPX-iii, and the digital press.
- PPD file: Provides information about the EFI Splash RPX-iii and the digital press to your application and printer driver.

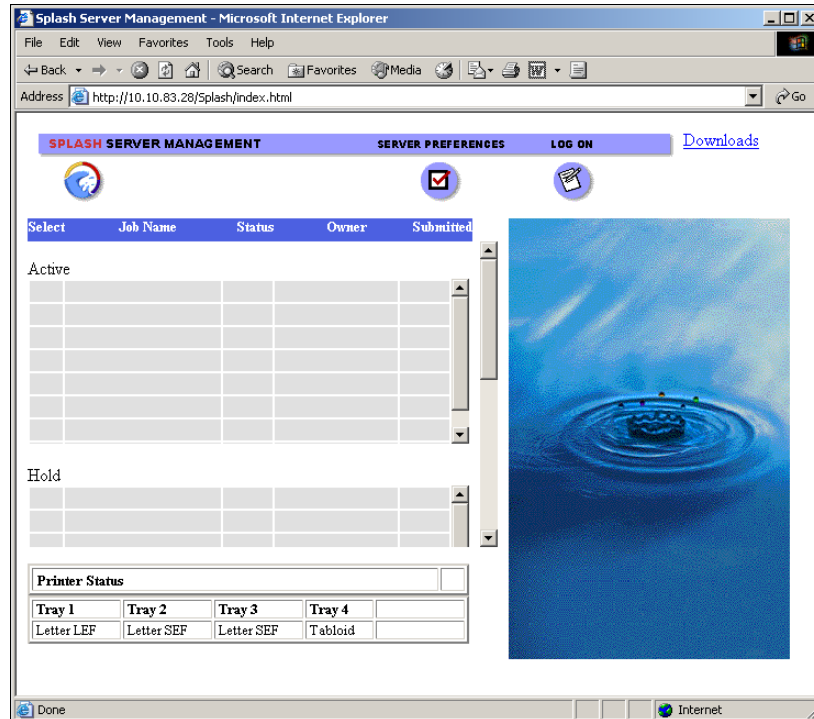
### Downloading the printer files from the EFI Splash RPX-iii

Before you start the procedure for setting up the TCP/IP printing connection, you can download the Windows printer files to your computer directly from the EFI Splash RPX-iii over the network or install the printer files from the Splash RPX-iii User Software and Documentation DVD.

#### TO DOWNLOAD WINDOWS PRINTER FILES

- 1 Start your Internet browser.
- 2 Type the EFI Splash RPX-iii IP address and click Go.

The Splash Server Management dialog box appears.



- 3 Click Downloads in the upper right-hand corner of the dialog box.

**4 Click Splash Installer Downloads.****5 Download RPX-iii Windows Drivers.zip to your desktop and expand the archive.**

You now have the printer files ready to be installed. Set up the printing connection and install these printer files in the same way as you do with the files on the EFI Splash RPX-iii User Software and Documentation DVD.

For more information about setting up the printing connection, see [page 45](#). For more information about installing the printer files, see [page 48](#).

## Setting up the TCP/IP printing connection

To print a job to the EFI Splash RPX-iii, you must configure your Windows computer for the printing connections. This section describes how to set up the TCP/IP printing connection.

**NOTE:** The EFI Splash RPX-iii must be configured to accept print jobs using the TCP/IP protocol, and LPD must be enabled on the EFI Splash RPX-iii by your server administrator. For more information, see the [Configuration Guide](#).

The procedures for setting up TCP/IP printing connections for Windows 2000, Windows XP, Windows Server 2003, and Windows Vista are similar. The following procedures use the illustrations from the Windows XP computer. Any differences are noted.

---

### TO SET UP TCP/IP PRINTING CONNECTION FOR WINDOWS

**1 Obtain the IP address of the EFI Splash RPX-iii from your server administrator.****2 Windows 2000: Click Start, choose Settings, and then choose Printers.**

**Windows XP: Click Start and choose Printers and Faxes.**

**Windows Server 2003: Click Start, choose Control Panel, and then choose Printers and Faxes.**

**Windows Vista: Click the Start button, choose Settings, and then choose printers.**

**3 Double-click Add Printer (or click Add a Printer).**

The Add Printer Wizard dialog box appears.

**4 Click Next.**

The Local or Network Printer pane appears.

**5 Select Local printer (or Local printer attached to this computer), clear the “Automatically detect and install my Plug and Play printer” option, and then click Next.**

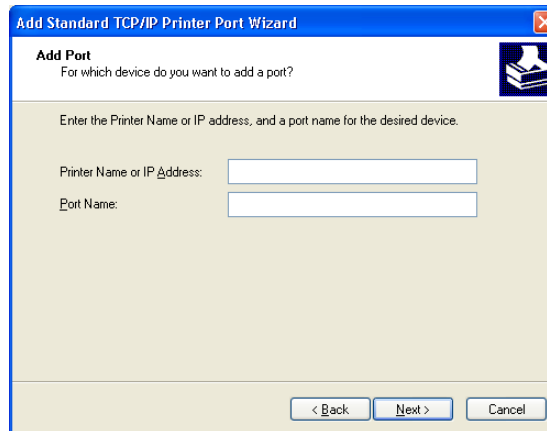
The Select a Printer Port pane appears.

**6 Select Create a new port.****7 Select Standard TCP/IP Port from the Type of port list and click Next.**

The Add Standard TCP/IP Printer Port Wizard dialog box appears.

**8 Click Next.**

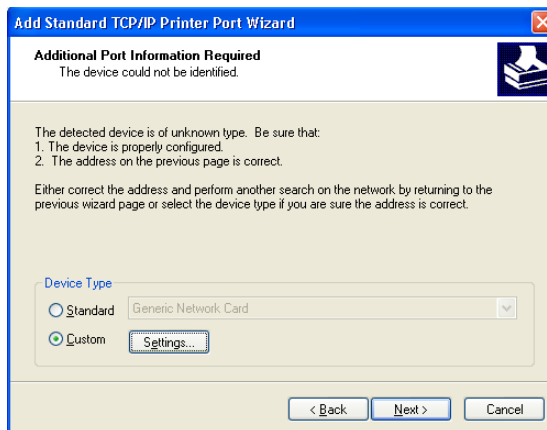
The Add Port pane appears.



The screenshot shows the 'Add Standard TCP/IP Printer Port Wizard' window, specifically the 'Add Port' step. The title bar reads 'Add Standard TCP/IP Printer Port Wizard'. The main heading is 'Add Port' with a subtext 'For which device do you want to add a port?'. Below this, it says 'Enter the Printer Name or IP address, and a port name for the desired device.' There are two input fields: 'Printer Name or IP Address:' and 'Port Name:'. At the bottom, there are three buttons: '< Back', 'Next >', and 'Cancel'.

**9 Type the EFI Splash RPX-iii IP address and click Next.**

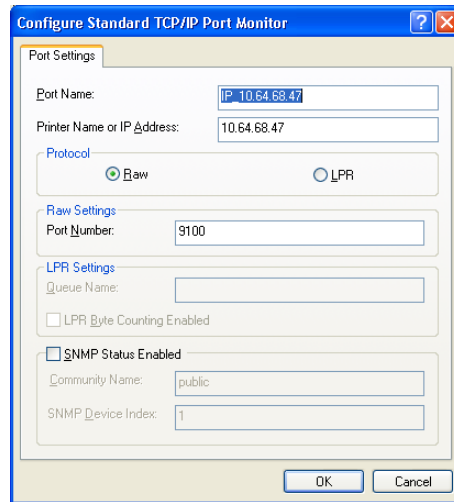
The Additional Port Information Required pane appears.



The screenshot shows the 'Add Standard TCP/IP Printer Port Wizard' window, specifically the 'Additional Port Information Required' step. The title bar reads 'Add Standard TCP/IP Printer Port Wizard'. The main heading is 'Additional Port Information Required' with a subtext 'The device could not be identified.' Below this, it says 'The detected device is of unknown type. Be sure that:' followed by a list: '1. The device is properly configured.' and '2. The address on the previous page is correct.' It then says 'Either correct the address and perform another search on the network by returning to the previous wizard page or select the device type if you are sure the address is correct.' There is a 'Device Type' section with two radio buttons: 'Standard' (selected) and 'Custom'. The 'Standard' option has a dropdown menu showing 'Generic Network Card'. The 'Custom' option has a 'Settings...' button. At the bottom, there are three buttons: '< Back', 'Next >', and 'Cancel'.

**10 Select Custom in the Device Type area and click Settings.**

The Configure Standard TCP/IP Port Monitor dialog box appears.



**11 In the Protocol area, select Raw or LPR.**

**NOTE:** To determine if your environment is set up for Port 9100 or LPR printing, contact your server administrator.

- **To use Port 9100 printing, select Raw.**

The port number 9100 automatically appears in the Raw Settings area. This is the default port number. You can print to the printer connection selected for Port 9100 printing on the EFI Splash RPX-iii.

- **To use LPR printing, select LPR and type a name in the Queue Name field.**

Type "Splash" to connect to the default queue on the EFI Splash RPX-iii.

To connect to a Virtual Printer, type the name of the Virtual Printer in the Queue Name field in LPR Settings. For more information about Virtual Printer, see the [Job Management Guide](#).

**12 Click OK.**

**13 Click Next.**

**14 Click Finish in the Add Standard TCP/IP Port Wizard dialog box.**

The Add Standard TCP/IP Port Wizard dialog box closes and the Add Printer Wizard dialog box appears. For instructions on installing the printer files, see the following section.

## Setting up the Windows client for printing to the EFI Splash RPX-iii

The following sections describe how to add a printer with the printer files on the EFI Splash RPX-iii User Software and Documentation DVD or the files that are downloaded from the EFI Splash RPX-iii.

For the system requirements, see [Getting Started](#).

### Setting up printing using the printer files on the DVD

Use the following procedure to install the printer files from the EFI Splash RPX-iii User Software and Documentation DVD.

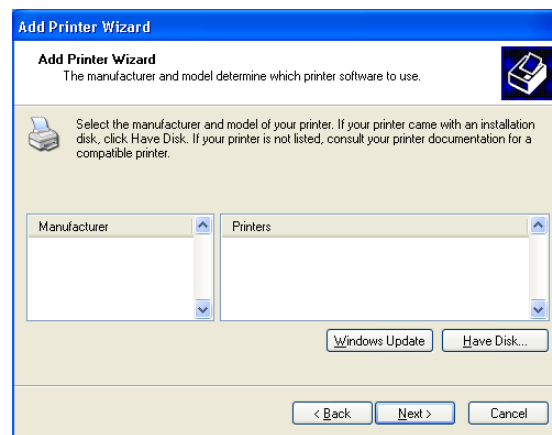
**NOTE:** The procedures for installing the printer files for Windows 2000, Windows XP, Windows Server 2003, Windows Vista are similar. The following procedures use Windows XP illustrations. The differences are noted.

---

#### TO INSTALL THE PRINTER FILES FROM THE DVD

**NOTE:** This procedure assumes that you have completed the procedure to set up the TCP/IP printing connection. For more information, see [page 45](#).

- 1 Click **Have Disk** in the **Add Printer Wizard** dialog box.



The **Install From Disk** dialog box appears and prompts you for the installation disk.

- 2 Insert the **EFI Splash RPX-iii User Software and Documentation DVD** into the **CD/DVD-ROM** drive.
- 3 Type the name of the **CD/DVD-ROM** drive (for example, **D:\**).



**4 Click Browse.**

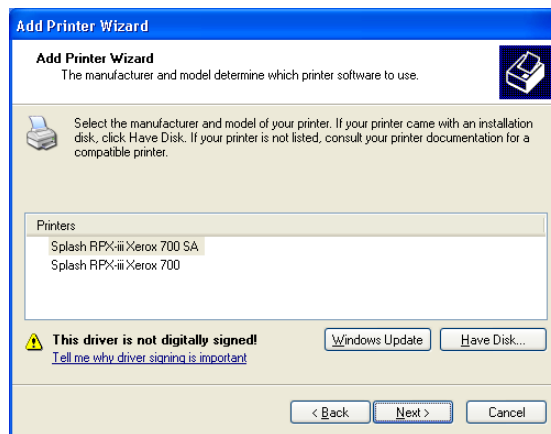
The Locate File dialog box appears.

**5 Browse to the following folder, which contains the printer files for the EFI Splash RPX-iii.**

EFI Splash RPX-iii\Printer Drivers\RPX-iii Windows Client\English\Prntdrv\  
Ps\_drvr\Win\_2K\_XP\_VISTA

**6 Select oemsetup.inf and click Open.**

The path is copied to the field in the Install From Disk dialog box.

**7 Click OK.****8 Select the PPD file in the Printers pane and click Next.**

The following Splash Server PPD files are provided:

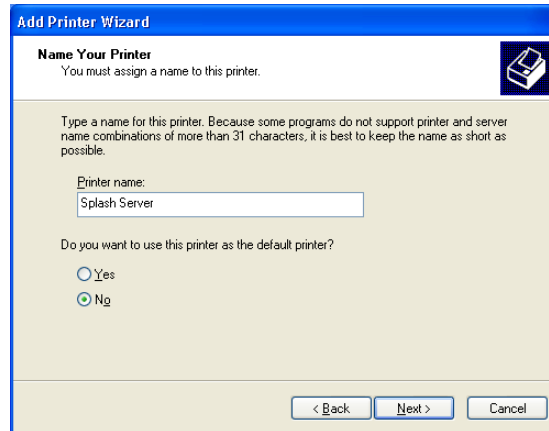
- **Splash RPX-iii Xerox 700** for standard printing
- **Splash RPX-iii Xerox 700 SA** for Secure Access printing

**NOTE:** Select the PPD file for Secure Access printing if your server administrator configured Secure Access printing at the EFI Splash RPX-iii. For more information, see [“Secure Access”](#) on page 98 and the [Job Management Guide](#).

**9 Type a custom name in the Printer name field, or keep the default name.**

This name is used in the Printers window.

- 10 Indicate whether you want to make this the default printer, and then click Next.



- 11 Indicate whether you want to share the printer with other network users, and then click Next.
- 12 Indicate whether you want to print a test page, and then click Next.
- 13 Click Finish to install the printer driver and close the Add Printer Wizard.

The necessary files are installed on your hard disk. When installation is complete, the Printers dialog box appears, with an icon for the newly installed printer.

### Setting up using the downloaded printer files

You can install the downloaded printer files in the same way as the files on the EFI Splash RPX-iii User Software and Documentation DVD. See [“Setting up the Windows client for printing to the EFI Splash RPX-iii”](#) on page 48.

## Adding a printer with the SMB printing connection

If your network does not have a Windows server, Windows computers can still print to the EFI Splash RPX-iii. This method of printing is SMB printing (also known as Windows or WINS printing). When users send print jobs, computers running Windows operate in a peer-to-peer environment and communicate directly with the EFI Splash RPX-iii.

Enabling SMB printing allows the EFI Splash RPX-iii to be listed on the network, so that Windows clients can print to the EFI Splash RPX-iii without using other networking software. Windows printing runs via TCP/IP. You must configure TCP/IP on the EFI Splash RPX-iii and on all computers that use SMB printing. For information about configuring TCP/IP on the EFI Splash RPX-iii, see the [Configuration Guide](#).

## Setting up the EFI Splash RPX-iii with Point and Print

SMB printing allows you to install printer files on your computer using Point and Print, and print to the EFI Splash RPX-iii.

**NOTE:** To use the SMB printing feature, the Windows Sharing option must be enabled by your server administrator at the EFI Splash RPX-iii. For more information, see the [Configuration Guide](#).

---

### TO INSTALL THE PRINTER FILES BY POINT AND PRINT

- 1 **Obtain the IP address of the EFI Splash RPX-iii from your server administrator.**
- 2 **Click Start and choose Run.**
- 3 **Type “\\” followed by the IP address of the EFI Splash RPX-iii.**

An example: \\10.10.83.28

- 4 **If the login dialog box appears, type the user name and password for the server administrator of the EFI Splash RPX-iii.**

For this information, contact your server administrator.



- 5 **Click OK.**

The content of the EFI Splash RPX-iii hard disk appears.

- 6 **Double-click the “Splash” printer icon to connect to the default queue on the EFI Splash RPX-iii.**  
**Double-click the name of a Virtual Printer to connect to the Virtual Printer.**

For information about Virtual Printers, see the [Job Management Guide](#).

- 7 **If the Printers dialog box appears, click Yes.**

The printer files for the EFI Splash RPX-iii are installed on your computer and the printer window appears.

## Uninstalling the printer files

When you must remove the printer files from your Windows computer, remove them using the Splash Printer Delete Utility that is provided on the EFI Splash RPX-iii User Software and Documentation DVD.

For information about installing the Splash Printer Delete Utility, see [Getting Started](#).

---

### TO UNINSTALL THE PRINTER FILES

- 1 **Click Start, choose All Programs (or Programs), and then choose EFI.**
- 2 **Click SplashPrinterDeleteUtility.**

The Splash Driver Uninstall Tool dialog box appears. The EFI Splash RPX-iii printer files found on your computer are listed.
- 3 **Select the printer name and click Delete.**
- 4 **Click OK to delete the printer files.**
- 5 **Click OK to restart, or click Cancel to return to the Splash Driver Uninstall Tool dialog box to delete another set of printer files.**
- 6 **When you finish deleting the printer files, click Exit.**
- 7 **Restart your computer.**

## Configuring Installable Options

To use the print options for the digital press and EFI Splash RPX-iii appropriately, you must configure the EFI Splash RPX-iii from your computer for the options that are installed on the digital press. Configure the options manually, or for TCP/IP network connections, use the Two-Way Communication feature to configure the options automatically. For the list of the available options, see [page 84](#).

### Configuring installable options manually

The following procedures describe how to manually configure the EFI Splash RPX-iii. The procedures for all Windows platforms are similar. Any differences are noted in the text.

**NOTE:** When you configure installable options manually, be sure to match the actual configuration of the digital press. Otherwise, the print options shown in the printer driver might not match the print options actually available.

---

**TO CONFIGURE OPTIONS MANUALLY**

- 1 **Windows 2000:** Click Start, choose Settings, and then choose Printers.  
**Windows XP:** Click Start and choose Printers and Faxes.  
**Windows Server 2003:** Click Start, choose Control Panel, and then choose Printers and Faxes.  
**Windows Vista:** Click the Start button, choose Settings, and then choose printers.
- 2 In the Printers window, right-click the EFI Splash RPX-iii printer icon and choose Properties.
- 3 Click the Accessories tab.
- 4 From the Available Options list, select the options that are installed on the digital press.
- 5 Click Add.

The options are moved to the Installed Options list.

- 6 Click OK.

**Configuring installed options automatically**

If you enabled a TCP/IP network, you can automatically update your printer driver to reflect the options currently installed on the digital press. When the printer driver is first installed, the options reflect the default settings that were set up in EFI Splash RPX-iii Setup. When you update the printer driver using the Two-Way Communication option, you allow the printer driver to retrieve the settings from the EFI Splash RPX-iii.

The Two-Way Communication option also updates the print options in Expert Color Settings to reflect the current color settings on the EFI Splash RPX-iii. For more information about color-related print options, see the [Color Guide](#).

---

**TO ENABLE TWO-WAY COMMUNICATION**

- 1 **Windows 2000:** Click Start, choose Settings, and then choose Printers.  
**Windows XP:** Click Start and choose Printers and Faxes.  
**Windows Server 2003:** Click Start, choose Control Panel, and then choose Printers and Faxes.  
**Windows Vista:** Click the Start button, choose Settings, and then choose printers.
- 2 In the Printers window, right-click the EFI Splash RPX-iii printer icon and choose Properties.
- 3 Click the Accessories tab.
- 4 Select Two-Way Communication.
- 5 Type the EFI Splash RPX-iii IP address or DNS name.
- 6 Select Update Splash Driver When Opened.

The Splash Server Properties dialog box displays the printer's current default settings when it is opened.

- 7 Click Update.
- 8 Click the Advanced tab and clear the Enable advanced printing features option.
- 9 Click OK.

## Printing from Windows computers

Print to the EFI Splash RPX-iii just as you would print to any other printer from a Windows application. Select the EFI Splash RPX-iii as the current printer in the Printers list and print the file from within the application.

After you install the EFI Splash RPX-iii printer files and configure the printing connections, you can print from most Windows applications. Using the appropriate PPD file, you can control the EFI Splash RPX-iii printing features by specifying the print options from the Print dialog boxes. For more information about the EFI Splash RPX-iii print options, see [page 72](#).

### Selecting the EFI Splash RPX-iii from the Printers list

Before you print a job, select the EFI Splash RPX-iii from the Printers list. Use the following procedure to select the EFI Splash RPX-iii as your default printer.

---

#### TO SELECT THE EFI SPLASH RPX-iii AS THE DEFAULT PRINTER

- 1 **Make sure that the EFI Splash RPX-iii is connected to the network and turned on.**
- 2 **Windows 2000: Click Start, choose Settings, and then choose Printers.**  
**Windows XP: Click Start and choose Printers and Faxes.**  
**Windows Server 2003: Click Start, choose Control Panel, and then choose Printers and Faxes.**  
**Windows Vista: Click the Start button, choose Settings, and then choose printers.**

The printers that are set up for printing are listed. The Virtual Printers that are configured at the EFI Splash RPX-iii and set up for printing are also listed. For more information about Virtual Printers, see the [Job Management Guide](#).

- 3 **Right-click the EFI Splash RPX-iii and select Set as Default Printer.**
- 4 **Close the window.**

## Setting print options from Windows

The print options are set from the Print tabs with most Windows applications. For information about specific print options, see [“Print Options”](#) on page 72.

Some default settings are set by your server administrator during EFI Splash RPX-iii Setup. For information about the current server default settings, contact your server administrator.

Some print options that are selectable from the printer driver or an application are the same as or similar to print options that are specific to the EFI Splash RPX-iii. In these cases, use the print options specific to the EFI Splash RPX-iii. The printer driver or an application may not set up the file properly for printing on the EFI Splash RPX-iii, resulting in unexpected printing errors and longer processing time.

**NOTE:** When you send your job to a Virtual Printer, a set of print options that are configured for the Virtual Printer is applied, overriding your selection in the printer driver. For more information about Virtual Printers, see the [Job Management Guide](#).

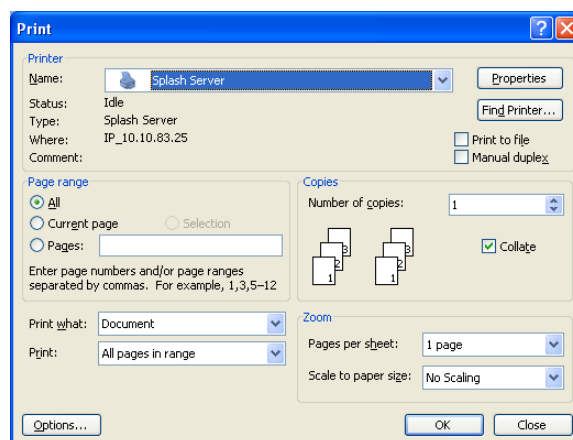
The procedures for printing a job from the Windows 2000, Windows XP, Windows Server 2003, Windows Vista computers are similar. The following procedures use Windows XP illustrations. Any differences are noted.

---

### TO SET PRINT OPTIONS FROM WINDOWS

- 1 Open a file in your application.
- 2 Choose Print from the File menu.

The Print dialog box appears. The name of the EFI Splash RPX-iii that is set up as the default printer is listed in the Name field. The drop-down menu allows you to view the list of other printers that are set up for printing.

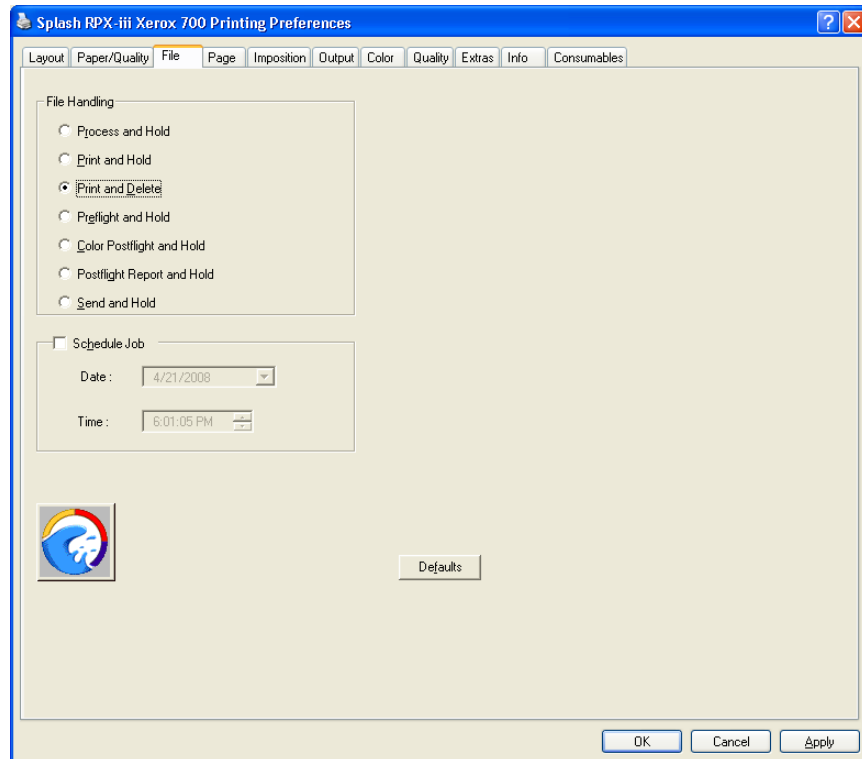


**NOTE:** The Virtual Printers that are configured at the EFI Splash RPX-iii and set up for printing are also listed. For more information about Virtual Printers, see the [Job Management Guide](#).

**3 Select the EFI Splash RPX-iii from the Name list and click Properties.**

The Document Properties dialog box appears.

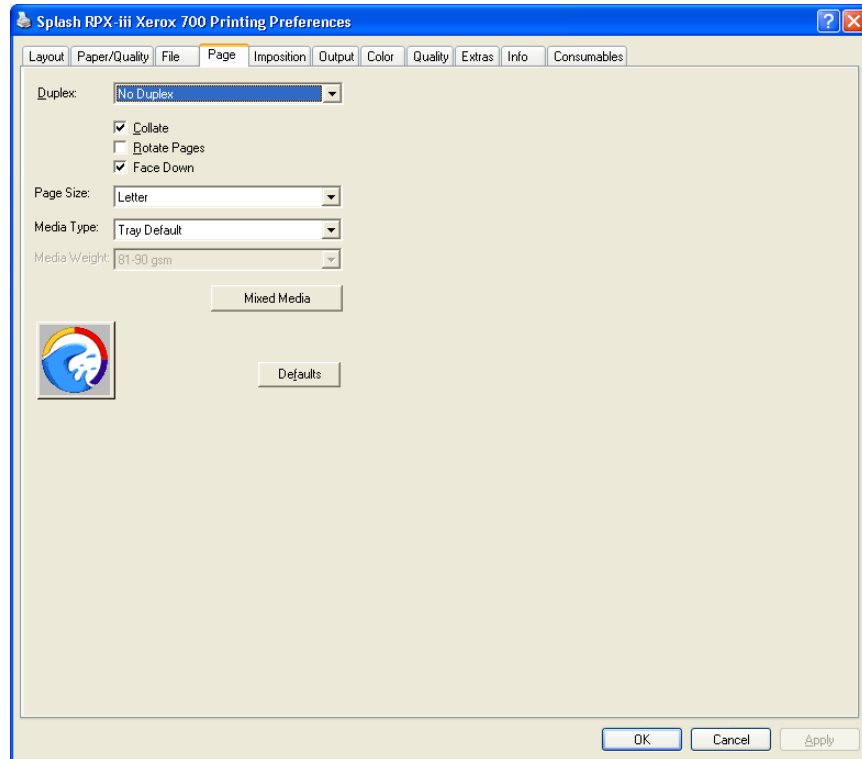
**4 Click the File tab to specify file handling and scheduling options.**



For more information, see the table on [page 74](#) and “[File Handling](#)” on page 90.

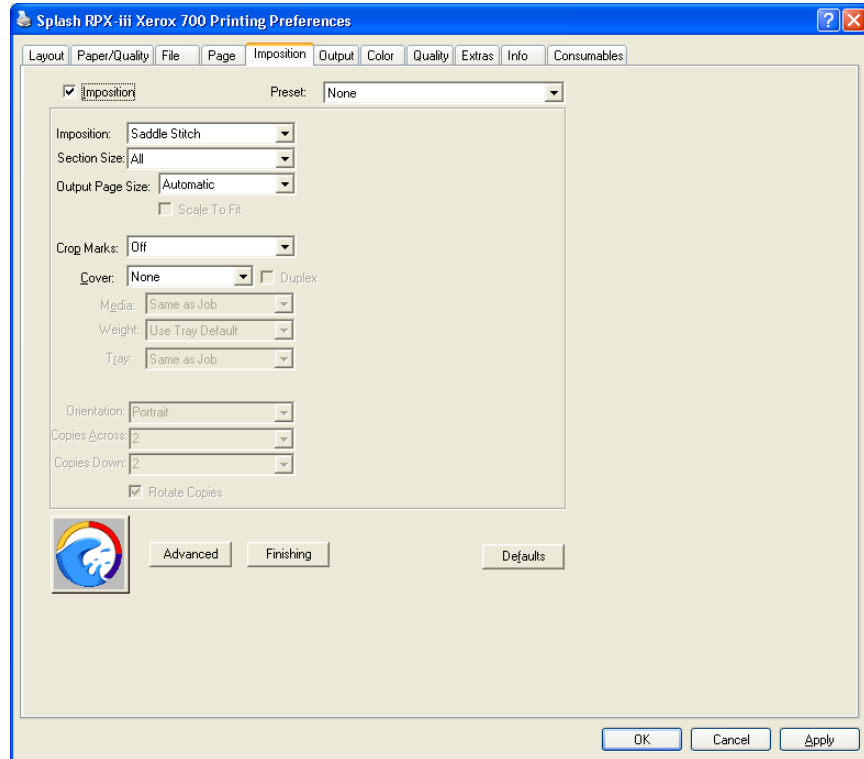


5 Click the Page tab to specify job handling and media options.



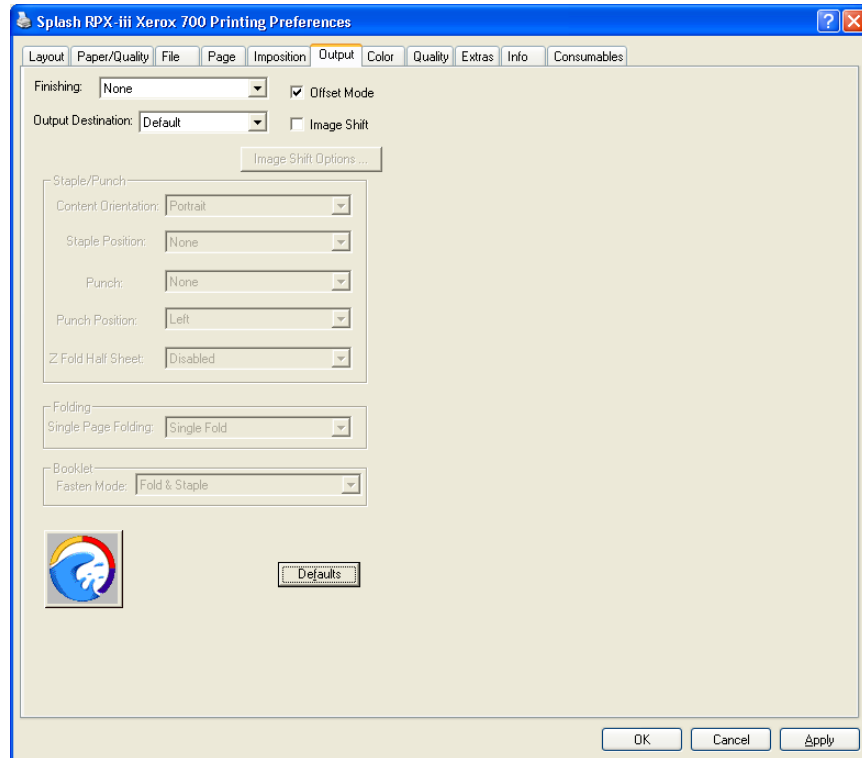
For more information about tray selection, see the table on [page 88](#) and “[Tray Selection](#)” on [page 95](#). For more information about paper sizes, see the table on [page 88](#).

6 Click the Imposition tab to specify advanced page layout options.



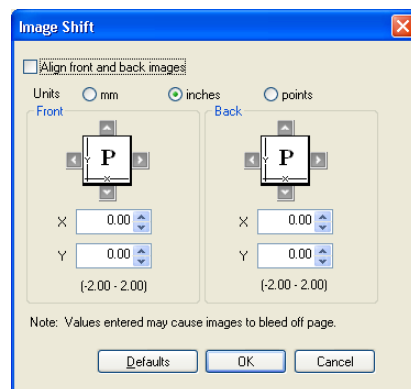
For more information, see the table on [page 75](#) and the *Job Management Guide*.

7 Click the Output tab to specify Output and Finishing options.

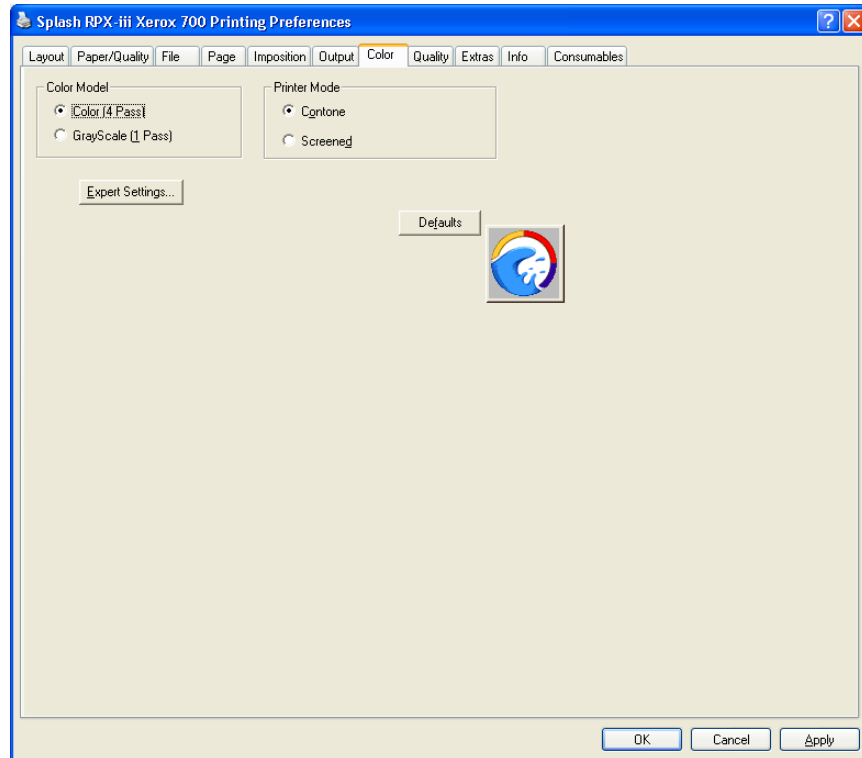


For more information, see the table on [page 79](#).

To use the Image Shift feature, select the Image Shift option and then click Image Shift Options to specify the offset values in the Image Shift dialog box.



**8 Click the Color tab to specify Color Model and Printer Mode options.**

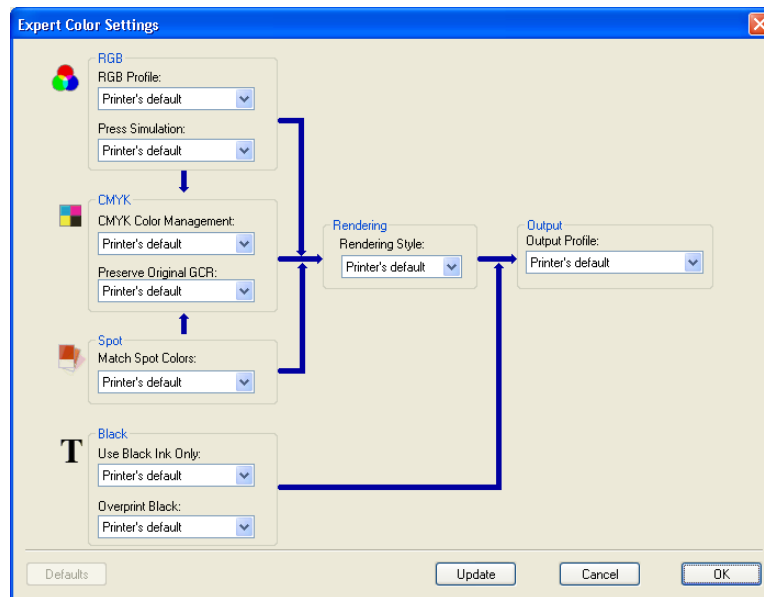


**Click Expert Settings to specify the color settings.**

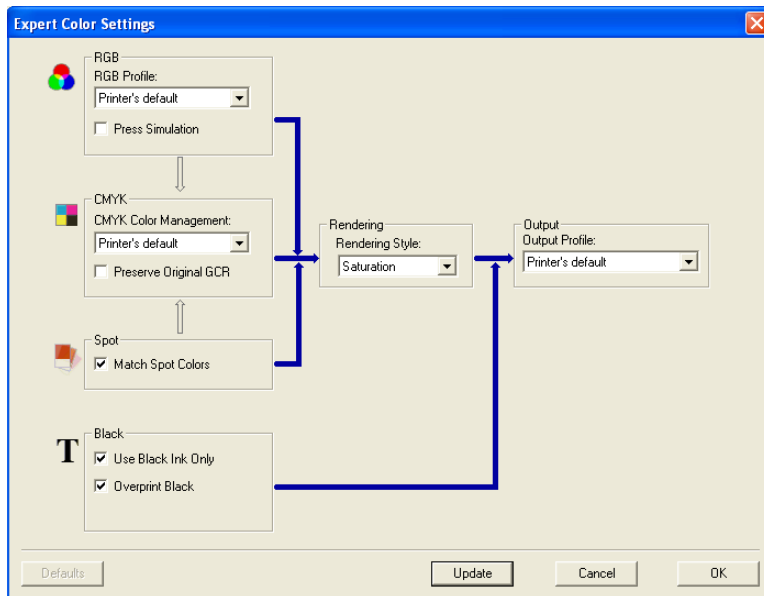
The Expert Color Settings dialog box displays color settings differently, depending on whether or not the Two-Way Communication option is selected.

**NOTE:** To view the current color settings at the EFI Splash RPX-iii, you must enable the Two-Way Communication option. For more information, see [“Enabling Two-Way Communication”](#) on page 65.

Two-Way Communication:  
Off



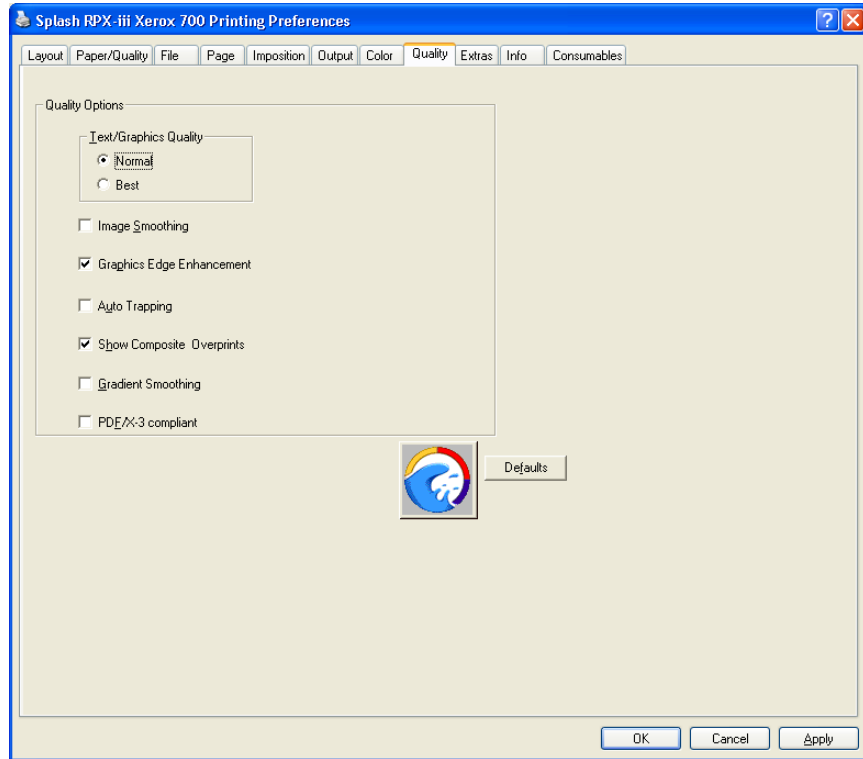
Two-Way Communication:  
On



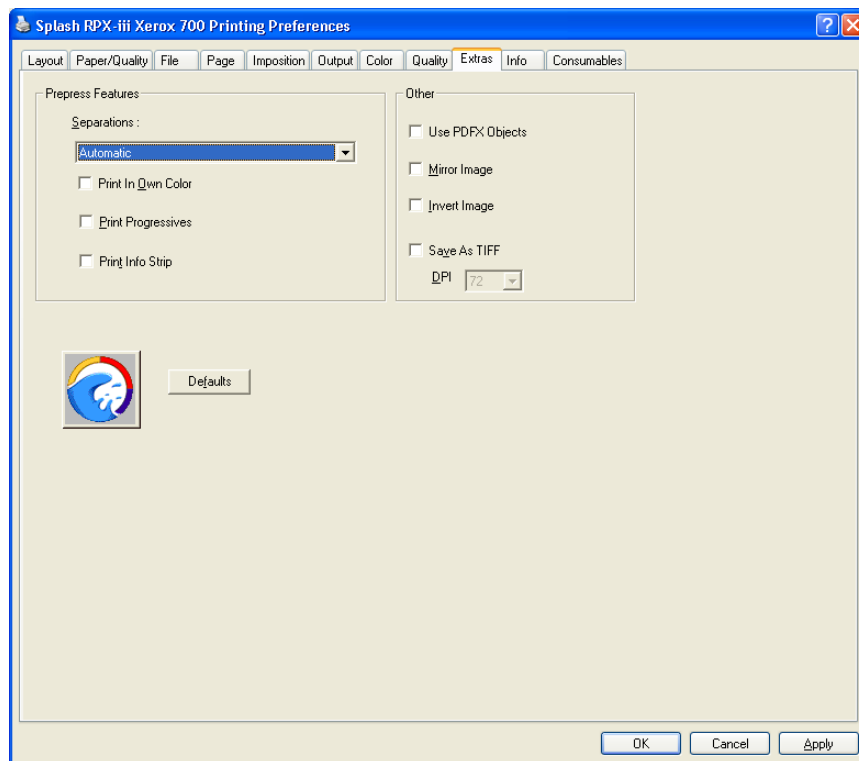
**NOTE:** The initial values reflect the current color settings that are set in Edit Defaults at the EFI Splash RPX-iii.

For information about the color options, see the table on [page 85](#) and the [Color Guide](#).

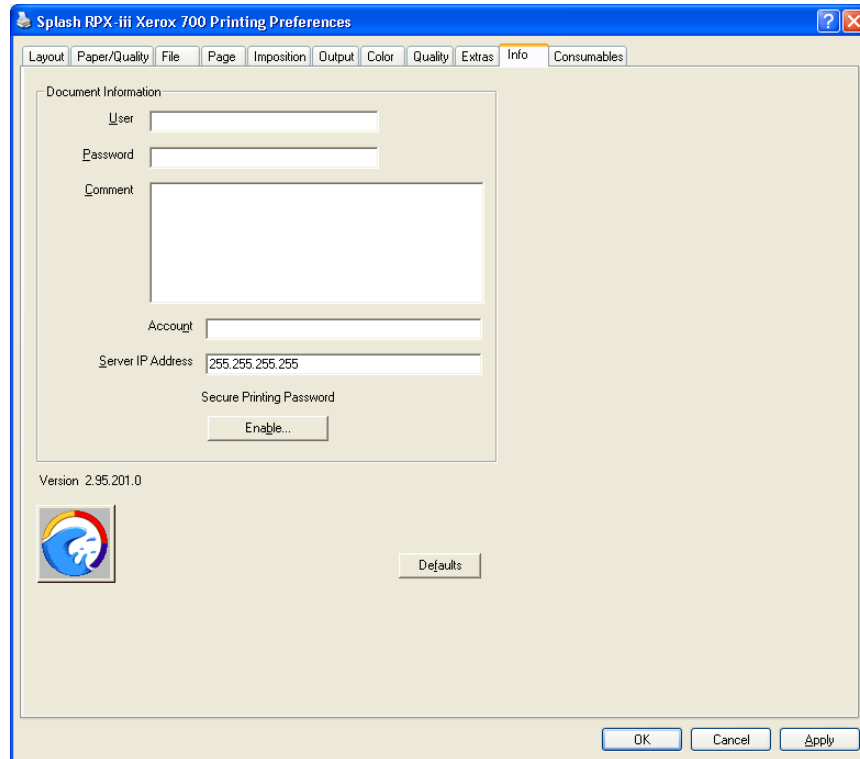
**9 Click the Quality tab to specify Quality options.**



For more information, see the table on [page 81](#) and the *Color Guide*.

**10 Click the Extras tab to specify Prepress options.**

For more information, see the table on [page 82](#) and the *Color Guide*.

**11 Click the Info tab.**

If the Secure Access printing is configured at the EFI Splash RPX-iii, type the following information, if required: User, Password, and Account.

For more information, see the table on [page 83](#).

**NOTE:** The information in this pane can be entered for Secure Access or standard printing. If Secure Access is configured at the EFI Splash RPX-iii and the required information is not provided, you are prompted to do so when you click Print.

Contact your server administrator for the required information. For more information about Secure Access printing, see “[Secure Access](#)” on page 98 and the *Job Management Guide*.

**Click Enable to use the Secure Printing feature.**

The Secure Printing dialog box appears. For information about Secure Printing, see [page 96](#).

**Type your password to send your job as a Secure Printing job and click OK.**



**12 Click the Consumables tab to view the following information about the digital press:**

- **Paper:** Levels, Sizes, and Dimensions
- **Engine Status:** Device Name, State, Jobs in Queue, Status Messages, and Error Messages
- **Toner:** Levels

**NOTE:** The content in the Consumable tab is displayed using the Two-Way Communication option. For more information, see the following section.

**13 Click Update to update the digital press status.****14 Click Print.**

## Enabling Two-Way Communication

The Two-Way Communication option allows you to retrieve information, such as the current color settings at the EFI Splash RPX-iii and the status of the digital press, from the EFI Splash RPX-iii. The Two-Way Communication option is enabled when you configure the printer port for the EFI Splash RPX-iii. For more information, see [“Setting up the TCP/IP printing connection”](#) on page 45.

If the Two-Way Communication option is not enabled automatically, use the following procedure to enable the feature on the Accessories tab of the Properties dialog box, or the Info tab of the Printing Preferences or Document Properties dialog box.

---

**TO ENABLE TWO-WAY COMMUNICATION ON THE ACCESSORIES TAB**

- 1 Windows 2000:** Click Start, choose Settings, and then choose Printers.  
**Windows XP:** Click Start and choose Printers and Faxes.  
**Windows Server 2003:** Click Start, choose Control Panel, and then choose Printers and Faxes.  
**Windows Vista:** Click the Start button, choose Settings, and choose Printers.
- 2 In the Printers or Printers and Faxes window, right-click the EFI Splash RPX-iii printer name and select Properties.**  

The Properties dialog box appears.
- 3 Click the Accessories tab.**
- 4 Select Two-Way Communication.**
- 5 Type the EFI Splash RPX-iii IP address or DNS name.**

---

**TO ENABLE TWO-WAY COMMUNICATION ON THE INFO TAB OF PRINTING PREFERENCES**

- 1 **Windows 2000:** Click Start, choose Settings, and then choose Printers.  
**Windows XP:** Click Start and choose Printers and Faxes.  
**Windows Server 2003:** Click Start, choose Control Panel, and then choose Printers and Faxes.  
**Windows Vista:** Click the Start button, choose Settings, and choose Printers.
- 2 **In the Printers or Printers and Faxes window, right-click the EFI Splash RPX-iii printer name and select Printing Preferences.**  
  
The Printing Preferences dialog box appears.
- 3 **Click the Info tab.**
- 4 **Type the EFI Splash RPX-iii IP address in the Server IP Address field.**
- 5 **Click OK.**

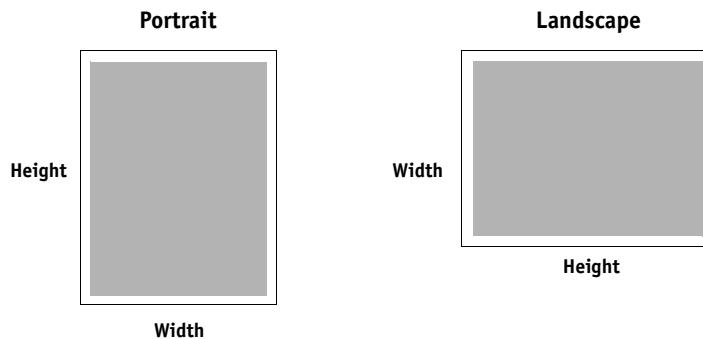
---

**TO ENABLE TWO-WAY COMMUNICATION ON THE INFO TAB OF DOCUMENT PROPERTIES**

- 1 **Open a file in your application.**
- 2 **Choose Print from the File menu.**
- 3 **Select the EFI Splash RPX-iii from the Name list and click Properties.**  
  
The Document Properties dialog box appears.
- 4 **Click the Info tab.**
- 5 **Type the EFI Splash RPX-iii IP address in the Server IP Address field.**
- 6 **Click OK.**

## Defining custom page sizes

With custom page sizes, you define the dimensions of a printed page. After you define a custom page size, you can use it from within an application without redefining it each time you print. When you create custom page sizes, specify Width dimensions to correspond with the shorter side of your job and Height dimensions to correspond with the longer side of your job. Set custom page sizes in this way, regardless of the orientation settings in the application.



The procedures for defining a custom page size from the Windows 2000, Windows XP, Windows Server 2003, and Windows Vista computers are similar. The following procedures use Windows 2000 illustrations. Any differences are noted.

---

### TO DEFINE A CUSTOM PAGE SIZE FROM WINDOWS

- 1 **Windows 2000:** Click Start, choose Settings, and then choose Printers.  
**Windows XP:** Click Start and choose Printers and Faxes.  
**Windows Server 2003:** Click Start, choose Control Panel, and then choose Printers and Faxes.  
**Windows Vista:** Click the Start button, choose Settings, and choose Printers.
- 2 **Right-click the EFI Splash RPX-iii and select Printing Preferences.**
- 3 **Click the Paper/Quality tab and then click Advanced.**  
The Splash RPX-iii Xerox 700 Advanced Options dialog box appears.
- 4 **Under Paper/Output, select PostScript Custom Page Size from the Paper Size list.**  
The PostScript Custom Page Size Definition dialog box appears.
- 5 **Specify the following options.**
  - **Custom Page Size Dimensions:** Specify the width and height of the print job.

You can print custom page sizes with the following dimensions:

- **Width:** 3.94 to 13 inches (100 to 330.2 mm)
- **Height:** 5.83 to 19.2 inches (148 to 488 mm).

You can create a custom page size as small as 0.25 inches (6.35 mm).

You can impose custom page sizes smaller than 3.94 x 5.83 inches (100 x 148 mm) but they cannot be printed.

The Custom Page Size feature supports margins of 0.16 inch (4.0 mm).

The printer driver allows you to define custom page sizes with 0 margins. This is useful for imposition. If you print a custom page size, 0.16 inch (4.0 mm) margins are used on all sides.

- **Unit:** Select a unit of measurement for the dimensions.
- **Paper Feed Direction:** Choose the paper feed direction for the page size.
- **Paper Type:** Select Cut Sheet or Roll Feed.
- **Offsets Relative to Paper Feed Direction:** Specify the offsets (margins) of the page size relative to the paper feed direction.

**6 Click OK to close the PostScript Custom Page Size Definition dialog box.**

**7 Click OK to close the Splash RPX-iii Xerox 700 Advanced Options dialog box.**

**8 Click OK to close the Printing Preferences dialog box.**

You can now specify the custom page size from an application.

## Installing the Splash Status widget

EFI Splash RPX-iii provides Print and Printer Status widgets to allow users to track printing jobs and view tray information from their desktop on Windows 2000/XP/Server 2003 and Windows Vista clients.

The following sections describe how to install the Splash Status widget on a Windows 2000/XP/Server 2003 or Windows Vista client.

**NOTE:** The Google Desktop Splash widget is to be installed on Windows 2000/XP/Server 2003 clients only. The Vista Splash widget is to be installed on Windows Vista clients only.

**NOTE:** Before you install the Google Desktop Splash widget, you must have Google Desktop installed.

---

### TO DOWNLOAD AND INSTALL THE SPLASH WIDGET

**NOTE:** Web Sharing must be enabled to view the Splash Server Management dialog box. For more information about Web Sharing, see the [Configuration Guide](#).

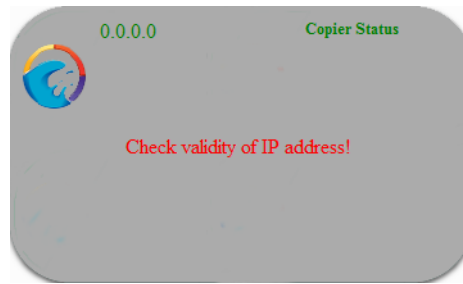
- 1 **Start your Internet browser.**
- 2 **Type the EFI Splash RPX-iii IP address and press Enter.**  
The Splash Server Management web page appears.
- 3 **Click Downloads in the upper right-hand corner of the web page.**
- 4 **Click Splash Installer Downloads.**
- 5 **Click SplashWidgetsAndGadgets.zip and save the file to your desktop.**
- 6 **Expand the archive.**
- 7 **Google Desktop: Open the Google Desktop folder.**  
**Vista: Open the Vista folder.**

**8 To install the Splash Status widget, do one of the following:**

**Google Desktop:** Double-click SplashStatus.gg.

**Vista:** Double-click SplashStatus.gadget.

After the widget installation has finished, the Splash Status widget appears in the gadget on the desktop.



Now you are ready to configure the Splash Status widget.

---

**TO CONFIGURE THE SPLASH STATUS WIDGET**

**1 Right-click on the Splash Status widget and choose Options.**

**2 Type the TCP/IP address of the Splash Server in the IP field.**

**3 Select Copier Status or Active Queue from the Info list.**

- **Copier Status** displays information about the paper tray contents and how much paper is loaded in each tray, along with up to three digital press error messages or warnings.
- **Active Queue** provides the current status information for the top five jobs in the Active queue, along with a count of how many jobs are currently in the Active queue.

**4 Select the amount of time the widget will refresh from the Refresh Every list.**

The refresh rate is 5 seconds to 1 hour. The default is 15 seconds.

**NOTE:** Widgets only refresh when they are visible on the screen. They do not generate network traffic when they are in use.

**5 Click OK when the configuration is finished.**

Now you are ready to use the Splash Status widget.

---

**TO USE THE SPLASH STATUS WIDGET**

- 1 If Active Queue was selected during the widget configuration, jobs are displayed as they arrive in the Active queue.

If Copier Status was selected during the widget configuration, toner levels, paper levels and the printer's status are listed.

- 2 To disconnect the Splash Status widget from sidebar:

**Google Desktop:** Right-click on the widget and choose Unlock from Sidebar. Choose Dock to Sidebar to return it to the sidebar.

**Vista:** Right-click on the widget and choose Detach from Sidebar. Choose Attach to Sidebar to return it to the sidebar.

- 3 **Google Desktop:** To hide or show the widget, right-click on the widget and choose Collapse or Expand.
- 4 **Vista:** To move the detached widget to another location on the desktop, right-click on the widget and choose Move.

## PRINT OPTIONS

This chapter describes the EFI Splash RPX-iii print options. It covers the following topics:

- Information about printer drivers and PostScript printer description (PPD) files
- Brief explanations of each print option, default setting, and any constraints or requirements
- Details about specific print options

### About printer drivers and PPD files

The EFI Splash RPX-iii receives files from computers on the network, processes (RIPs) the files, and then sends them to the digital press. When printing from an application, the Mac OS or Windows computer communicates with the EFI Splash RPX-iii by means of a PostScript printer driver and PPD files.

A printer driver provides a way to communicate information about print jobs between your application, the EFI Splash RPX-iii, and the digital press. It interprets the instructions generated by the application, merges those instructions with digital press-specific options you specify, and then translates all information into a language that the digital press understands. In other words, the printer driver writes a PostScript file based on your original file and the options you specify from the Page Setup and Print dialog boxes.

A PPD file contains information about the features and capabilities of a particular device (for example, what paper sizes and media types are supported). The printer driver reads the information in the PPD file and presents the information to you in the form of print options you select in the Page Setup and Print dialog boxes. The PPD file for the EFI Splash RPX-iii includes information about the features of both the digital press and the EFI Splash RPX-iii. For information about the specific print options for the EFI Splash RPX-iii, see the table on [page 74](#).

### About print options

The EFI Splash RPX-iii print options give you access to the special features of your digital press and EFI Splash RPX-iii. They can be specified in multiple locations: at the EFI Splash RPX-iii and from your applications. You can also specify some print options at the Splash RPX-iii server using Hot Folders. For more information about Hot Folders, see the [Job Management Guide](#).



## Print option override hierarchy

The override hierarchy is as follows:

- The Splash Server Preferences settings override the factory default settings.
- The EFI Splash RPX-iii Default Job Settings override the factory default settings and server preferences.
- The settings from your applications override the Default Job Settings.
- The Virtual Printers or Hot Folders settings override the settings from your applications.

## Setting print options

For information about where to set print options, see the following descriptions:

**Splash Server Preferences:** Some settings are specified at Splash Server Preferences during EFI Splash RPX-iii Setup by your server administrator. For more information about the Splash Server Preferences, see the [Configuration Guide](#). For information about the current EFI Splash RPX-iii settings, print the Configuration page from the EFI Splash RPX-iii or contact your server administrator.

**EFI Splash RPX-iii Default Job Settings:** You can set the default values for most of the print options from the Default Job Settings dialog box at the EFI Splash RPX-iii. For more information about Default Job Settings, see the [Job Management Guide](#). For information about the current EFI Splash RPX-iii settings, print the Configuration page from the EFI Splash RPX-iii or contact your server administrator.

**Application:** When printing from your application, you can specify print options with the PostScript printer drivers. For more information, see [Printing from Mac OS X](#) and [Printing from Windows](#).

**Virtual Printers or Hot Folders:** You can assign a set of print options to a Virtual Printer or a Hot Folder. When you specify a set for a Virtual Printer or a Hot Folder, those print options are applied to all jobs that are sent to the Virtual Printer or the Hot Folder. For more information, see the [Job Management Guide](#).

**Splash Server overrides:** You can change the settings of a job from the Edit Job Settings dialog box at the EFI Splash RPX-iii. For more information, see the [Job Management Guide](#).

## EFI Splash RPX-iii print options

The following table provides a list of print options that are available with the EFI Splash RPX-iii. The factory default settings are underlined. The constraints and information about the print options are also provided in the table.

If you do not change any settings, the EFI Splash RPX-iii prints your job with the factory default settings. If your server administrator changed the Printer's default settings at the EFI Splash RPX-iii and you do not change any settings, your job is printed with the settings your server administrator specified.

The structure of the print options in the following table is based on the Mac OS X printer driver. The items in the table are based on the Mac OS X and Windows XP printer drivers. Any differences in the names and locations of the print options for Mac OS X and Windows XP are noted.

Option Groups	Options	Settings (underlined: default setting)	Do this	Constraints and information
<b>Splash Features:</b> <b>File</b> <b>(Mac OS)</b>  <b>File</b> <b>(Windows)</b>	<b>File Handling</b>	<b>Process and Hold</b> <b>Print and Hold</b> <u><b>Print and Delete</b></u> <b>Preflight and Hold</b> <b>Color Postflight and Hold</b> <b>Postflight Report and Hold</b> <b>Send and Hold</b>	Specify the action at the EFI Splash RPX-iii for the spooled and processed files after you send the job.	For more information, see <a href="#">page 90</a> .
	<b>Schedule Job</b>	<b>Schedule Print Job dialog box:</b> - Date - Time <b>(Mac OS)</b>  <b>Selected:</b> - Date - Time <u><b>Unselected</b></u> <b>(Windows)</b>	For Mac OS: Click Schedule Job to display the Schedule Print Job dialog box. Select the date on the calendar that appears. Type or select the time using the arrows.  For Windows: Select the Schedule Job option. Type or select the date on the calendar that appears. Type or select the time using the arrows.	

Option Groups	Options	Settings (underlined: default setting)	Do this	Constraints and information
<b>Splash Features:</b> Job <b>Page</b> Handling (Mac OS)  <b>Page</b> (Windows)	Duplex	<u>No Duplex</u> Long Edge Binding Short Edge Binding	Specify whether to enable the feature for your job.	For more information, see <a href="#">page 91</a> .
	Collate	<u>Selected</u> Unselected		
	Rotate Pages	Selected <u>Unselected</u>		
	Face Up	Selected <u>Unselected</u>		
Media Options	Media Type	- <u>Use Tray Default</u> - Uncoated - Uncoated side 2 - Recycled - Pre-Punched - Coated - Coated side 2 - Transparency - Transfer - Label - Tab - Custom 1-10	Select the media type for your job.	For more information, see the documentation that accompanies the digital press.
	Media Weight	64-80 gsm 81-90 gsm <u>91-105 gsm</u> 106-128 gsm 129-150 gsm 151-176 gsm 177-220 gsm 221-256 gsm 257-300 gsm	Select the media weight for your job.  - Uncoated: 64-300 gsm - Label: 106-300 gsm	For more information, see the documentation that accompanies the digital press.
	Mixed Media (Windows)		Click to define the Mixed Media settings for your job.	For more information, see the <a href="#">Job Management Guide</a> .
<b>Splash Features</b> <b>Imposition</b> (Mac OS)  <b>Imposition</b> (Win)	Preset	<u>None</u> Booklet, no cover Booklet, front cover Booklet, front and back cover Booklet, duplexed cover	Select a predefined Imposition preset as a shortcut to Booklet printing. You can change the individual settings to customize the printing of any particular print job, but cannot save the changes to the presets.	Presets cannot be changed.
	Imposition	Selected <u>Unselected</u>	Specify whether to use the Imposition feature.	For more information, see the <a href="#">Job Management Guide</a> .

Option Groups	Options	Settings (underlined: default setting)	Do this	Constraints and information
	Imposition Type	<u>Saddle Stitch</u> 4-up Saddle Stitch Perfect Bound 4-up Perfect Bound Cut & Stack Signature Step and Repeat (Auto) Step and Repeat (Fixed) 2-up Imposition	Select the imposition type for your Imposition job.	
	Section Size	All 4 8 <u>16</u> 32 64	Select the section size for your Imposition job.	
	Output Paper Size	<u>Automatic</u> Letter SEF Letter LEF Legal Legal 13 Tabloid 12x18 13x19 A3 SRA3 A4 SEF A4 LEF B4 B5 SEF B5 LEF 8K 16K LEF 215 x 315mm	Select the output paper size for your Imposition job.	
	Scale To Fit	Selected <u>Unselected</u>	Specify whether to scale your Imposition job to fit the paper.	
	Crop Marks	Off 0.1in/2.5mm 0.2in/5.0mm <u>0.3in/7.5mm</u> 0.4in/10.0mm 0.5in/12.5mm	Specify whether to print the crop marks, and the type of the crop marks for your Imposition job.	
	Cover	None <u>Front and Back</u> Front Back		
	Duplex Cover	Selected <u>Unselected</u>		

Option Groups	Options	Settings (underlined: default setting)	Do this	Constraints and information
	Cover Media Type (Mac)	Same as job Uncoated Uncoated side 2		
	Media Type (Win)	Recycled Coated Coated side 2		
	Cover Weight	<u>Use Tray Default</u> 64-80gsm 81-90gsm 91-105gsm 106-128gsm 129-150gsm 151-176gsm 177-220gsm 221-256gsm 257-300gsm		
	Cover Tray (Mac) Tray (Win)	<u>Same as Job</u> Automatic Tray 1 Tray 2 Tray 3 Tray 5 Tray 6 Tray 6 (Oversized) Tray 6 and 7 (Oversized) Tray 8 (Insertter)		
	Content	<u>Portrait</u> Landscape	Specify the content orientation when Imposition Type is set to Step and Repeat (Fixed) or Step and Repeat (Auto).	
	Down	1 2 3 4 5 6 7 8	Specify the number of columns when Imposition Type is set to Step and Repeat (Fixed) or Step and Repeat (Auto).	
	Across	1 2 3 4 5 6 7 8	Specify the number of rows when Imposition Type is set to Step and Repeat (Fixed) or Step and Repeat (Auto).	

Option Groups	Options	Settings (underlined: default setting)	Do this	Constraints and information
	Rotate Copies	<u>Selected</u> Unselected	Select to rotate copies when Imposition Type is set to 2-up Imposition.	
	Gutter Across/ Gutter Down	<u>0in</u>	Enter a value for the amount of white space to leave between copies.  When the Imposition Type is set to Step and Repeat (Fixed), Step and Repeat (Auto) or 2-up Imposition, you can specify the X and Y directions. For other Imposition Types, you can specify a single value to control the space between pages.	
	Bleed	<u>0in/0mm</u>	Enter a value for the amount of extra data to print outside the crop box.	
	Creep	<u>Auto</u> Manual	Select Auto if you want the Splash Server to determine the creep value based on the specified paper type.  Select Manual to enter a creep value.  Available when Imposition Type is set to Booklet.	
	Crop Size	<u>Use Page Setup</u> Manual - Across - Down	Select Use Page Size to use the page size specified in the application.  Select Manual to define a width and height to crop the page to, which is taken from the center of the original page size.	

Option Groups	Options	Settings (underlined: default setting)	Do this	Constraints and information
Splash Features: Output (Mac OS)  Output: Finishing Options (Windows)	Finishing	<u>None</u> Staple/Punch Booklet Single Page Folding	Specify the finishing option for your job.	For more information, see the documentation that accompanies the digital press.
	Output Destination	<u>Default</u> Output Tray Finisher Top Tray Finisher Stacker Tray Booklet Tray Tri-Fold Output Tray HCS Top Tray HCS Stacker Tray	Specify the output tray for your job.	
	Offset Mode	<u>Selected</u> Unselected	Specify whether to offset sets of your job.	
	Staple/Punch	<u>Portrait</u> Landscape	Define the orientation of the content of the original document so that the EFI Splash RPX-iii places staple and punch selections correctly.	
	Staple Position	<u>None</u> Left Top Single Left Bottom Single Right Top Single Right Bottom Single Top Double Right Double Left Double Bottom Double Left Center Right Center Top Center Bottom Center	Specify whether to staple your job, and the location of the staple(s) if a job is stapled.	For more information, see <a href="#">page 91</a> .
	Punch	<u>None</u> 2 Hole Punch 3 Hole Punch 4 Hole Punch	Specify whether to punch your job, and the number of holes if a job is punched.	
		Position: - <u>Left</u> - Right - Top	Specify the location of the holes if a job is punched.	
	Z Fold Half Sheet	<u>Unselected</u> Selected		

Option Groups	Options	Settings (underlined: default setting)	Do this	Constraints and information
	Booklet	Fasten Mode	Fold <u>Fold and Staple</u>	Specify the booklet job settings.
	Folding	Single Page Folding	None <u>Single Fold</u> Z Fold C Fold	Specify the folding method.
	Image Shift (Mac OS)	Image Shift Options	Front/Back side - X - Y	Click the button and specify the image shift options in the Image Shift dialog box.
	Image Shift (Win)	Enable Image Shift	Selected <u>Unselected</u>	Select Enable Image Shift, select the units, and specify the offset values for the images to shift on the front and back sides. Select the Align front and back images option to align them.
		Align front and back images	Selected <u>Unselected</u>	
		Units	Points Inches mm	
		Front/Back	X Y	



Option Groups		Options	Settings (underlined: default setting)	Do this	Constraints and information
Splash Features: Quality (Mac OS)	Quality Options	Text/Graphics Edge Enhancement	<u>Selected</u> Unselected	Specify whether to enable the feature for your job.	For more information, see the <a href="#">Color Guide</a> .
		Text/Graphics Quality	<u>Normal</u> Best		
Quality (Windows)		Image Smoothing	Selected <u>Unselected</u>		
		Show Composite Overprints	Selected <u>Unselected</u>		
		Auto Trapping	Selected <u>Unselected</u>		
		Gradient Smoothing	Selected <u>Unselected</u>		
		PDF/X-3 Compliant	Selected <u>Unselected</u>		

Option Groups	Options	Settings (underlined: default setting)	Do this	Constraints and information
Splash Features: Extras (Mac OS)  Extras (Windows)  Prepress Features	Separations	<u>Automatic</u> Automatic Single Page Disabled		For more information, see the <a href="#">Color Guide</a> .
		Print In Own Color: - Selected - <u>Unselected</u>	Specify whether to print each plate of a separations file in its own color.	
	Print Progressives	Selected <u>Unselected</u>	Specify whether to print progressives for your job.	
	Print Info Strip	Selected <u>Unselected</u>	Specify whether to print the Info Strip for your job.	
	Save As TIFF	Selected <u>Unselected:</u> -DPI ( <u>72</u> /300/600)	Specify whether to save your job as a TIFF file, and select the resolution from the list for your job.	
	Use PDFX Objects	Selected <u>Unselected</u>	Specify to use PDFX Objects, a feature that recognizes objects (text, image, vectors) within a PostScript or PDF file, and caches the image.	
	Mirror Image	Selected <u>Unselected</u>	Specify whether to flip the page on the vertical axis.	
	Invert Image	Selected <u>Unselected</u>	Specify whether to invert your job.	

Option Groups	Options	Settings ( <u>underlined</u> : default setting)	Do this	Constraints and information
<b>Splash Features: Info (Mac OS)</b>  <b>Info: Document Information (Windows)</b>	<b>User</b>		Type information in the User, Password, and Account fields, if required for Secure Access printing.  Contact your server administrator to obtain this information.	The maximum number of characters is 32.  If no name is typed in the User field, the job includes the network identification of your computer.
	<b>Password</b>			The maximum number of characters is 32.
	<b>Comment</b>			The maximum number of characters is 255.
	<b>Account</b>			The maximum number of characters is 32.
	<b>Server IP Address (Windows)</b>		Type the IP address of the EFI Splash RPX-iii to use the Two-Way Communication option.	Contact your server administrator to obtain the information.
	<b>Secure Printing Password</b>	<b>Enable</b>  <b>Secure Printing dialog box:</b> - Password - Verify password	Click Enable to display the Secure Printing dialog box.  Enter the Secure Printing password in both fields and click OK.	The maximum number of characters for the password is 32.

Option Groups	Options	Settings (underlined: default setting)	Do this	Constraints and information
Splash Features: Accessories (Mac OS)  Printer Properties: Accessories: Available Options (Windows)	Finisher Option	Advanced Finisher (EU) Advanced Finisher (NA) High Capacity Stacker Light Production C Finisher (EU) Light Production C Finisher (NA) Light Production C Finisher with C/Z Fold (EU) Light Production C Finisher with C/Z Fold (NA) Professional Finisher (EU) Professional Finisher (NA)		
	Optional Trays	Tray 6 Tray 6 (Oversized) Tray 6 and 7 (Oversized) Tray 8 (Inserter)		
	Get installed options from server	Selected <u>Unselected</u>	Select to configure the installed options automatically.	
	Bonjour Printers		Select the Splash Server from the available list.	
	Splash Server IP Address		Click the Two-Way Communications button to open a dialog box to enable the feature.	

Option Groups	Options	Settings (underlined: default setting)	Do this	Constraints and information
ColorWise (Mac OS)	Print Mode (Mac OS)	<u>Standard Color</u> Expert Color Grayscale	Select a print mode or color model for your job.	For more information, see the <a href="#">Color Guide</a> .
ColorWise (Windows)	Color Model (Windows)	<u>Color (4 Pass)</u> Grayscale (1 Pass)		
	Color Mode	<u>Contone</u> Screened	Specify whether to print your job with the contone or halftone screening mode.	
	Bi-Di (Two-Way) Communication (Mac OS)	Selected <u>Unselected</u>  Printer Address Configure	Select Two-Way Communication or click Configure to open a dialog box to enable the option.	
	RGB: RGB Press Color Correction	<u>Enabled</u> Disabled		
Expert Color Settings	RGB: RGB Profile	<u>Printer's default (Custom Setup)</u> Adobe RGB Apple RGB Fiery RGB RGB 9300 ECI-RGB.V1.0.icc eciRGB.V2.icc RGB D50 RGB D65 sRGB Color Management Off Custom Setup: - Gamma: -- Lightest(1.0) -- Light(1.4) -- Normal(1.8) -- <u>Dark(2.2)</u> -- Darkest(2.6) - Whitepoint: -- More Yellow(D50 Proofing) -- Normal(D65) -- <u>More Blue(9300)</u>	Specify an RGB source color space definition for printing RGB images, objects, and text.  Select Custom Setup to specify the RGB Gamma and RGB Whitepoint settings.	For more information, see the <a href="#">Color Guide</a> .  <b>NOTE:</b> You must enable the Two-Way Communication option to view and edit the printer's default settings of the EFI Splash RPX-iii.
	RGB: Press Simulation	<u>Printer's default (Enabled)</u> Disabled Enabled	Specify whether to process your RGB job for press simulation.	
	RGB: Use Embedded RGB Profile	Printer default (Disabled) Enabled Disabled	Specify to use the embedded RGB profile.	

Option Groups	Options	Settings (underlined: default setting)	Do this	Constraints and information
	CMYK: CMYK Press Color Correction	<u>Enabled</u> Disabled		
	CMYK: Press Profile	<p>&lt;Two-Way Communication: Off&gt;  <u>Printer's default (Default)</u>  Default  Custom 1 - 10  Color Management Off</p> <p>&lt;Two-Way Communication: On&gt;  <u>Printer's default (CGATS SWOP)</u>  CGATS SWOP  CMYK Enhanced  CMYK Euroscale  CMYK SWOP  Corel RGB  Enterprise CMYK  Euro-Simulation  Euroscale Coated  Euroscale Enhanced  Fogamat  ISOcoated  ISOuncoated  ISO Uncoated Yellowish  ISO Web Coated  ISO Coated v2 (ECI)  ISO Coated v2 300 (ECI)  SC Paper (ECI)  Japanese Press Enhanced  Japanese Press Inks  Newsprint - Recycled Paper  Newsprint - White Paper  SWOP Coated  SWOP Enhanced  Type D Enhanced  Type D Inks  Uncalibrated  Visual Standard  Visual Standard EHW  Color Management Off</p>	Specify a CMYK color space definition for press simulation.	
	CMYK: Preserve Original GCR	<u>Printer's default (Disabled)</u> Enabled Disabled	Specify whether to preserve the original GCR values.	
	CMYK: Use Embedded CMYK Profile	Printer default (Disabled) Enabled Disabled	Specify to use the embedded CMYK profile.	

Option Groups	Options	Settings (underlined: default setting)	Do this	Constraints and information
	Spot: Match Spot Colors	<u>Printer's default (On)</u> On Off	Specify whether to enable the feature for your job.	
	Black: Use Black Ink Only	<u>Printer's default (On)</u> On Off		
	Black: Overprint Black	<u>Printer's default (On)</u> On Off		
	Rendering: Rendering Style	<u>Printer's default (Relative Colorimetric)</u> Relative Colorimetric Saturation Pure Primaries Absolute Colorimetric Perceptual	Specify the rendering style.	
	Output: Output Profile	<u>Printer's default (DP700_ (Splash))</u> DP700 (Splash) DP700 1bit (Splash) DP700 1bit EHW (Splash) DP700 1bit OHP (Splash) DP700 EHW (Splash) DP700 OHP (Splash)		

Option Groups	Options	Settings (underlined: default setting)	Do this	Constraints and information
Page Setup (Mac OS)  Page: Paper Size (Windows)	Paper Size	<u>Letter LEF</u> Letter SEF Statement SEF Statement LEF Legal Legal 13 Tabloid 12x18 13x19 A3 SRA3 A4 SEF A4 LEF A5 SEF A5 LEF A6 B4 B5 SEF B5 LEF B6 SEF Executive SEF Executive LEF 8x10 SEF 8x10 LEF 4x6 5x7 C5 (Envelope) 8K 16K LEF 215 x 315mm Manage Custom Sizes	Select the paper size for your job.	<b>NOTE:</b> A5 SEF and Statement SEF can only be selected in conjunction with Imposition printing. For information about Imposition, see <a href="#">page 75</a> .  For information about setting Custom paper size, see <a href="#">Printing from Mac OS X</a> and <a href="#">Printing from Windows</a> .
Paper Feed (Mac OS)  Page: Tray Selection (Windows)	Tray Selection	<u>Auto Tray Select</u> Tray 1 Tray 2 Tray 3 Tray 5 Tray 6 Tray 6 (Oversized) Tray 6 and 7 (Oversized) Tray 8 (Insertor)	Specify the paper source for your job.  Auto Tray Select automatically selects the tray that contains the paper size specified for your job.	For more information, see <a href="#">page 95</a> .



Option Groups	Options	Settings (underlined: default setting)	Do this	Constraints and information
Printer Info (Mac OS)  Consumables (Windows)		Paper Tray Info Toner Levels Refresh	Display the status of the digital press. Click Refresh to update the digital press status.	
		Two-Way Communication - Printer Address Configure	If no IP address appears next to Printer Address, click Configure to open a dialog box to enable the Two-Way Communication feature.	
		Paper Engine Status Toner Update	Display the status of the digital press. Click Update to update the status.	
Mixed Media (Mac OS)	Mixed Media		Click to define the Mixed Media settings for your job.	For more information, see the <a href="#">Job Management Guide</a> .
Image Shift (Mac OS)	Enable Image Shift	Selected <u>Unselected</u>	Select Enable Image Shift, select the units, and specify the offset values for the images to shift on the front and back sides. Select the Align front and back images option to align them.	
	Align front and back images	Selected <u>Unselected</u>		
	Units	Points Inches mm		
	Front/Back	X Y		

## More about print options

The following sections provide additional information about specific print options. For more information about the settings, requirements, and constraints in effect for these options, see the table on [page 74](#).

### File Handling

The EFI Splash RPX-iii provides several options for handling the PostScript spool file and image files created during printing.

- **Process and Hold** sends the spool file directly to the Hold queue after the EFI Splash RPX-iii processes it.
- **Print and Hold** saves the spool and image files after printing the job. The job is transferred to the Hold queue. Saving the image file saves time when the same file must be reprinted, but does not have to be reRIPped.
- **Print and Delete** automatically deletes the image and spool files after printing the job.
- **Preflight and Hold** processes and screens the job for prepress errors and then sends the job to the Hold queue.
- **Color Postflight and Hold** processes and prints the job to screen for color postflight errors, and then sends the job to the Hold queue.
- **Postflight Report and Hold** processes and generates a Postflight Report in a PDF format, and then sends the job to the Hold queue. The PDF file is automatically saved to the Postflight Reports folder on the desktop.
- **Send and Hold** sends the job file directly to the Hold queue, without processing.

## Job Handling

The following print options are provided for job handling.

- **Duplex** specifies that the job prints double-sided output. Use this option to set up automatic duplex printing from Trays 1-7.
  - **No Duplex** applies no duplex (two-sided) printing.
  - **Duplex Short Edge Binding** prints double-sided sheets that are bound on the short edge of the document. The second side of the sheet is rotated for correct orientation if necessary.
  - **Duplex Long Edge Binding** prints double-sided sheets that are bound on a long edge of the document. The second side of the sheet is rotated for correct orientation if necessary.
- **Collate** prints copies of a complete job, one after another. Jobs with the Collate option selected display the “Set” message while printing in the Splash Server status window. Jobs with the Collate option not selected display the “Copies” message while printing in the Splash Server status window.
- **Rotate Pages** rotates all pages of a job by 180 degrees. Select this option when stapling landscape jobs that are rotated incorrectly by the creating application, such as Microsoft PowerPoint and QuarkXPress.
- **Face Up** prints the job with a face-up orientation.

**NOTE:** If the Duplex option is selected for the job, Face Up has no effect.

## Manual duplex printing

Use the Duplex options to set up manual duplex printing from Tray 5, Tray 6 (Oversized), and Tray 7 (Oversized) for manual-fed jobs. This specifies that the job prints as two-sided output.

The following paper sizes and media types may not be automatically duplexed and may only be printed duplex using Manual Duplex from Tray 5, Tray 6 (Oversized), and Tray 7 (Oversized).

- Paper Size
  - SRA3, 12x18, 13x19, Custom
- Media Type
  - Uncoated (64-300 gsm)
  - Uncoated Side 2 (64-300 gsm)
  - Recycled (64-105 gsm)
  - Prepunched (64-300 gsm)
  - Coated (106-300 gsm)
  - Coated Side 2 (106-300 gsm)
  - Transfer Paper (129-176 gsm)
  - Tab Stock (106-300 gsm)

**NOTE:** The following media types cannot be used for automatic or manual duplex printing.

- Labels (106-300 gsm)
- Transparency

---

### TO PRINT USING MANUAL DUPLEX

**1 Send a job to the EFI Splash RPX-iii with the “Print and Hold” option selected.**

The Print and Hold option is displayed on the File tab. For more information about the location, see the table on [page 74](#).

**2 From the Job Options dialog box at the EFI Splash RPX-iii, specify to print only the odd-numbered pages.**

**3 Place the printed odd-numbered pages in the paper tray.**

**4 Verify that the orientation is appropriate for your job.**

**5 From the Job Options dialog box, specify to print only the even-numbered pages.**

The Duplex alignment offsets on the EFI Splash RPX-iii are applied to the even-numbered pages.

## Output

The following constraints are set for some of the options offered under Output:

- **Finishing:** To use these options, the following constraints apply.
  - **Staple/Punch** is disabled when no Finisher is attached, or when Output Destination is set to Booklet Tray or Output Tray.
  - **Single Page Folding** is disabled when no C/Z finisher is attached, or when Output Destination is set to Booklet Tray, Finisher Top Tray, or Finisher Stacker Tray.
  - **Booklet** is disabled when no Booklet finisher is attached, or when Output Destination is set to Output Tray, Finisher Top Tray, or Finisher Stacker Tray.
- **Output Destination:** To select a tray in this option, the tray must be installed at the digital press.

- **Staple:** To use this option, the Staple finisher must be installed at the digital press, Finishing must be set to Staple/Punch, and Output Destination must be set to Finisher Stacker Tray or Finisher Top Tray.
  - **Content Orientation:** To use this option, a Hole Punch Finisher must be installed at the digital press and the Output option must be set to Finisher Stacker Tray or Finisher Top Tray.
 

**Staple:** To use this option, Finisher Stacker Tray must be installed at the digital press and the Output option must be set to Finisher Stacker Tray.

**Left Top Single** is disabled when Punch Position option is set to Right.

**Left Bottom Single** is disabled when Punch Position option is set to Top or Right.

**Right Top Single** is disabled when Punch Position option is set to Left.

**Right Bottom Single** is disabled when Punch Position option is set to Top or Left.

**Top Double** is disabled when Punch Position option is set to Left or Right.

**Right Double** is disabled when Punch Position option is set to Top or Left.

**Left Double** is disabled when Punch Position option is set to Top or Right.

**Bottom Double** is disabled when Punch Position option is set to None.

**Left Center** is disabled when Punch Position option is set to Top or Right.

**Right Center** is disabled when Punch Position option is set to Top or Left.

**Top Center** is disabled when Punch Position option is set to Left or Right.

**Bottom Center** is disabled when Punch Position option is set to None.
  - **Punch:** To use this option, Hole Punch finisher must be installed at the digital press, and Finishing must be set to Staple/Punch and Output Destination must be set to Finisher Stacker Tray or Finisher Top Tray.
  - **Position** is disabled when the Punch option is set to None.
 

**Left** is enabled when the Staple option is set to Left Bottom Single, Left Top Single, or Left Double.

**Right** is enabled when the Staple option is set to Right Bottom Single, Right Top Single, or Right Double.

**Top** is enabled when the Staple option is set to Left Top Single, Right Top Single, or Top Double.
- **Folding:** To use this option, Light Production Finisher + C/Z Fold must be installed at the digital press and the Finishing option must be set to Folding.
- **Booklet:** To use this option, Booklet Finisher must be installed at the digital press, and Finishing must be set to Booklet and Output Destination must be set to Booklet Tray.

For more information, see the documentation that accompanies the digital press.

## Tray Selection

The Paper Source option lists the following trays that are available for the EFI Splash RPX-iii.

- **Auto Select:** The digital press searches for the tray that contains the paper size and media type that are specified for a job.

For the automatic tray selection to work properly, the paper sizes and media types must be correctly set in the digital press.

When a job is sent with the Media Type option set to any media type other than Tray Default, the correct paper size of the correct media type must be set in the digital press. If the correct paper size of the correct media type is not set in the digital press, the job does not print.

- **Tray 1, Tray 2, Tray 3, Tray 5, Tray 6, Tray 6 (Oversized), Tray 6 and 7 (Oversized), Tray 8 (Insertter):** You can specify a specific tray, for example, to print on letterhead or colored paper installed in a single tray.

When a job is sent with the Media Type option set to Tray Default, the job prints using the digital press settings. The paper size specified for the job must match the paper size in the tray. If the paper size does not match, the job does not print.

When a job is sent with the Media Type option set to any media type other than Tray Default, the job prints if the paper size and media type of the job match those in the tray. The job does not print if the media types do not match.

## Secure Printing

The printer drivers for the EFI Splash RPX-iii allow you to use Secure Printing to password-protect your jobs. This security feature can be implemented only from the printer driver, and printed at the EFI Splash RPX-iii only when a password is entered.

In order for a job to be password-protected, you must provide a password for the job at the time it is printed. If a job sent to the EFI Splash RPX-iii is password-protected, the job will not RIP until you enter a password at the EFI Splash RPX-iii.

**NOTE:** If a Secure Printing spool file is saved and sent to the Hold queue, the password is not saved and must be re-entered when you resend the job to the Active queue.

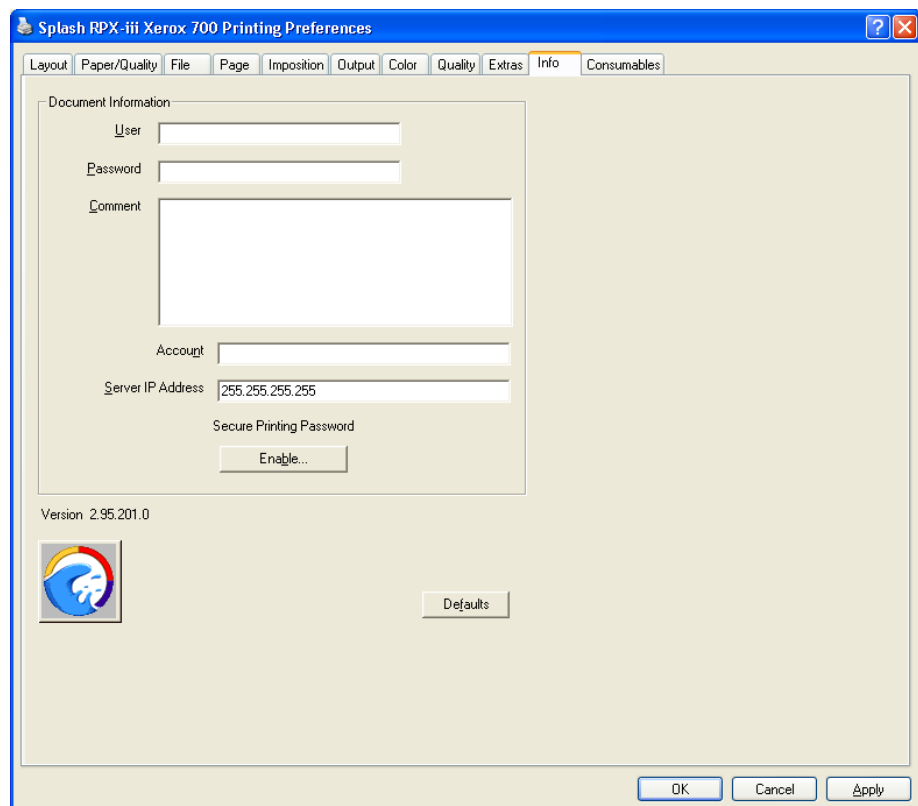
**NOTE:** A Secure Printing job cannot be previewed or be part of a document set.

---

### To SET SECURE PRINTING

- 1 **Open a document from your application.**
- 2 **Choose Print from the File menu.**
- 3 **Choose Splash Features from the pull-down menu and click the Info tab.**

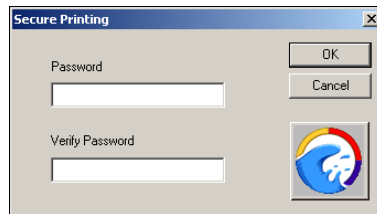
The Info pane appears.





**4 Click Enable.**

The Secure Printing dialog box appears.

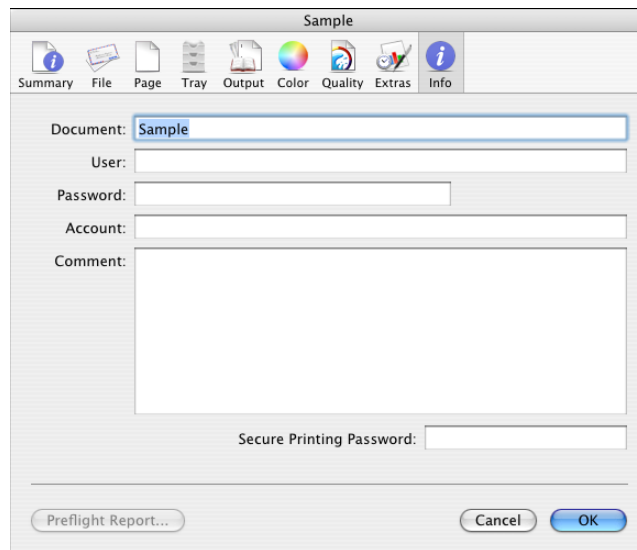
**5 Type a Secure Printing password, verify the password, and then click OK.**

The document is now password-protected, and the job goes to the Error queue at the EFI Splash RPX-iii.

---

**TO ACTIVATE A PASSWORD-PROTECTED JOB AT THE EFI SPLASH RPX-iii****1 Double-click the password-protected job in the Error queue.**

The dialog box with job information appears.

**2 Type the Secure Printing password, as it was assigned at your computer, and click OK.**

If you typed the password correctly, you can select the job and drag it to the Active queue. If an incorrect password is typed, the job stays in the Error queue.

## Secure Access

Secure Access allows the server administrator to limit who can print to the EFI Splash RPX-iii by defining a combination of User, Password, and Account that must be entered and verified before jobs print. Secure Access can also be used without verification to improve job logging by requiring User and Account information in order to print.

Secure Access accounts are established and managed at the EFI Splash RPX-iii by your server administrator. You are prompted for the required information at your computer. Validation of the information, if required, is performed by the EFI Splash RPX-iii. If the information is not correct, you are prompted to correct the information before you can print the job.

For more information about Secure Access, see the [Job Management Guide](#).

## Using the Secure Access printing

When the Secure Access printing is configured at the EFI Splash RPX-iii by your server administrator, you must use the Secure Access PPD file to print a job.

The following PPD files are provided for the EFI Splash RPX-iii:

- **Splash RPX-iii Xerox 700** for standard printing
- **Splash RPX-iii Xerox 700 SA** for Secure Access printing

To use Secure Access printing, you must use the PPD file with “SA” appended to the name.

Depending on the platforms and the types of printing connections to the EFI Splash RPX-iii, the Secure Access PPD files are installed and accessed differently. For more information about installing the printer files and selecting the Secure Access PPD file, see [Printing from Mac OS X](#) and [Printing from Windows](#).

## Printing

When you print a job, you are prompted to provide the following information as configured by your server administrator at the EFI Splash RPX-iii:

- User
- Password
- Account

**NOTE:** Contact your server administrator for the required information at your site.

If the information you entered is incorrect, the driver prompts you to re-enter the correct information, specifying the first incorrect entry, along with the error message that is set up at the EFI Splash RPX-iii. This continues until you enter the correct information or click Cancel. Once the correct information is entered, the job prints as with the standard PPD file.

# INDEX

## A

AppleTalk connection, Mac OS X 14, 19

## C

Color options, Windows 60

ColorWise, Mac OS X 34, 85

Consumables, Windows 65

custom page size

defining for Mac OS X 39

defining for Windows 67

## D

Default Browser connection 11, 16

deleting printer files 52

downloading printer files

Mac OS X 8

Windows 44, 50

## E

enabling Two-Way Communication

Mac OS X 38

Windows 65

Expert Color Settings

option group 85

Extras

Mac OS X 31

option group 82

Windows 63

## F

File

option group 74

Windows 56

File Handling 90

## I

Info

Mac OS X 32

option group 83

Windows 64

installable options

configuring from printer driver 52

specifying in Mac OS X 20

updating automatically 53

installing printer files

Mac OS X 7

Windows 48

IP Printer connection 12, 17

## J

Job Handling options 91

## L

Line Printer Daemon - LPD 12, 17

## M

Mac OS X

AppleTalk connection 14, 19

Default Browser connection 11, 16

downloading printer files 8

installing printer files 7

IP Printer connection 12, 17

Line Printer Daemon - LPD 12, 17

selecting printers 23

setting print options 24

Media Quality option 93

Mixed Media

Mac OS X 36, 37

## O

Oemsetup.inf file, Windows 49

Output

Mac OS X 29

option group 79

Windows 59

## P

Page

option group 75

Page options 57

- Paper Size 88
- Point and Print, Windows 51
- PPD
  - Mac OS X 8
  - Windows 49
- Print Center 7
- print options
  - about 72
  - override hierarchy 73
- printer default settings 73
- Printer Delete Utility 52
- printer drivers, about 72
- printer files, installing using Point and Print 51
- Printer Setup Utility 7
- printing
  - from Mac OS X 23
  - from Windows 54
- Q**
- Quality
  - Mac OS X 30
  - option group 81
  - Windows 62
- S**
- Secure Access printing
  - about 98
  - Mac OS X 32
  - Windows 64
- Secure Printing 96
  - Mac OS X 32
  - Windows 64
- selecting printers
  - Mac OS X 23
  - Windows 54
- setting print options
  - Mac OS X 24
  - Windows 55
- SMB printing connection, Windows 50
- Splash Color *see* ColorWise
- Splash Features options 26, 36, 74
- Splash Status widget
  - installing on Mac OS X 41
  - installing on Windows 2000/XP/Server 2003/Vista 69

- T**
- Tray Selection 88
- Tray Selection settings 95
- Two-Way Communication 53
  - Mac OS X 34, 38
  - Windows 60, 65
- U**
- uninstalling printer files, Windows 52
- V**
- Virtual Printers
  - Mac OS X 21
  - Windows 51
- W**
- Windows
  - custom page size 67
  - downloading printer files 44, 50
  - installing printer files 48
  - selecting printers 54
  - setting print options 55
  - SMB printing connection 50
  - Virtual Printers 51