

Setting up LPR Printer on the Spire Color Server

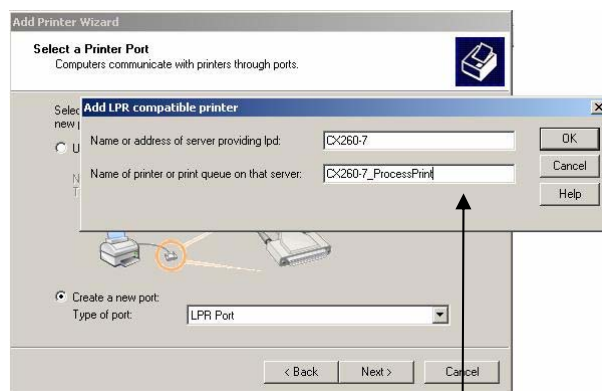
Before you begin, make sure that LPR is installed on your Windows 2000, 2000 Pro, XP and 2003 computer. Installing this type of port can be done from the **Add/Removed Programs -> Add/Remove Windows components** and the Windows installation CD.

Perform the following steps when you set up an LPR printer:

1. Click **Start** and select **Settings > Printers and Faxes** (Windows XP) or **Printers** (Windows 2000, 2000 Pro, XP and 2003).
2. Select **Add Printer**. The Add Printer wizard window appears.

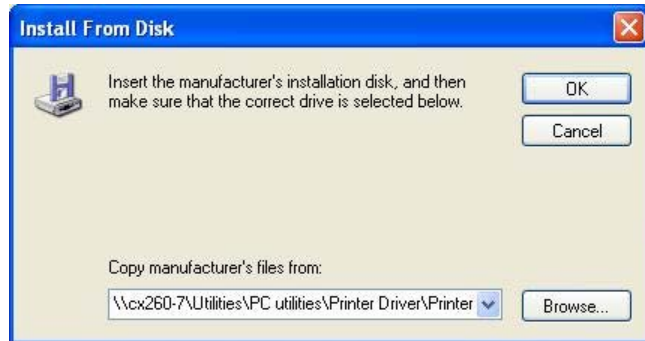
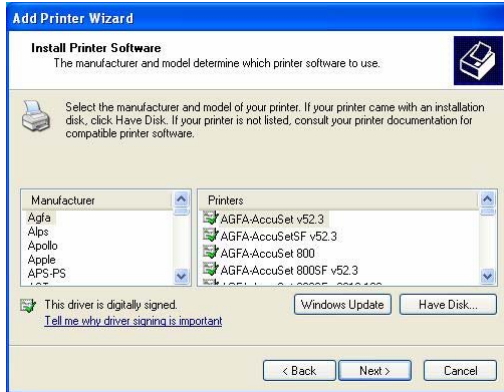


3. Click **Next**.



4. Select **Local printer attached to this computer**, and click **Next**.
5. Select **create a new port**.
6. From the **Type of port** list, select **LPR Port** and click **Next**.
7. In the **Add LPR compatible printer** box type the IP address or the exact name of the server and the exact name of the Spire Virtual Printer you want to use, Click **OK**

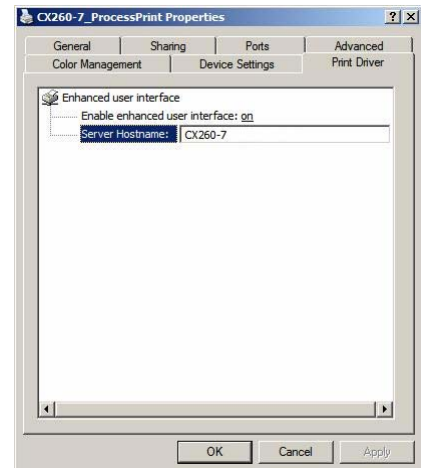
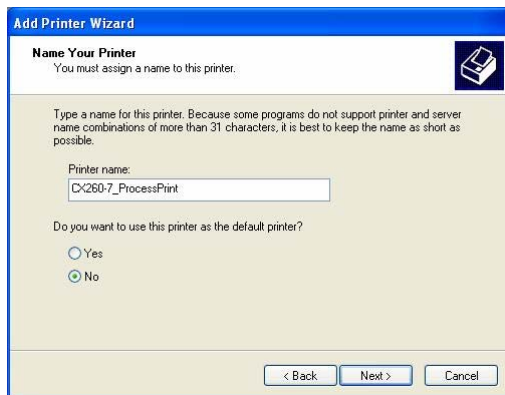
8. **Note:** If you install the Creo LPR printer for the first time you need to do the following:



Select **Have Disk...** and type the link of your Color Server and select **Browse...**

When the Add Printer wizard prompts you to enter the location of the **.INF** file, browse to your Spire Color Server and select: **Utilities\PC utilities\Printer Driver\Printer driver application\Win2000_XP_2003** folder. Select the desired region and paper size folder and then select the **.INF** file.

9. In the **Name Your Printer** box, rename the default printer name (**AdobePS CXxxxx**) and type the exact printer name from the Color Server **Virtual Printers** list, for example, **CX260-7_ProcessPrint**. Click **Next**.



10. Now click **Start** and select **Settings > Printers and Faxes** (Windows XP) or **Printers** (Windows 2000, 2000 Pro, XP and 2003).

11. Right-click the new LPR printer and select **Properties** → **Print Driver** tab.

12. Type in the **Server Hostname** the exact color server IP address or host name, and then click **OK**.

Spire Print Driver Extension

About the Print Driver Software

The Spire Print Driver software enables you to set job parameters for jobs that you send to the Xerox DocuColor printer/copier from any application on your PC client workstation.

The Print Driver software also enables you to see the Xerox DocuColor printer/copier configuration, monitor's the printer status, and save a set of print parameters for reuse.

Installing the Print Driver Software:

1. Open the file that you want to print—for example, a PDF file.
2. From the File menu, select Print.
3. In the Print dialog box, click Properties.

If this is the first time that you are using the Print Driver software, a message tells you that the software is loading. Then a dialog box appears with the print parameters.

Note: The loading process might take a few minutes. Afterwards, accessing the Print Driver software takes less time.

Uninstalling the Print Driver Software

If a new version of the Printer Driver Software is available you need to uninstall the current Printer Driver version from the client station.

1. Before removing the driver exit all running programs at the client station
2. Select Start -> Run -> \\%Color_Server% go to \Utilities\PC utilities\Driver Extension
3. Select the **DEXUninstaller.exe**
4. Choose the Printer Driver that you want to remove and O.K.

Creo Printer Driver Extension is now removed from the client station you can now install new driver extension as instruct in the first section of this chapter.

Limitation Note: As for now Spire Printer Driver Software is not supporting Window 2003 print server.

About Print On-Demand Solutions

The Print On-Demand Solutions (PODS) group develops high-performance digital color servers to drive a range of digital printers and presses. It also develops advanced on-demand applications to enable the creation of personalized direct mail, targeted catalogs, and other powerful one-to-one marketing communications.

© Creo, 2007. All rights reserved. Creo is a trademark of Creo. Adobe, Acrobat, Adobe Illustrator, Distiller, Photoshop, PostScript, and PageMaker are trademarks of Adobe Systems Incorporated. Apple, AppleShare, AppleTalk, iMac, ImageWriter, LaserWriter, Mac OS, Power Macintosh, and TrueType are registered trademarks of Apple Computer, Inc. Macintosh is a trademark of Apple Computer, Inc., registered in the U.S.A. and other countries. PANTONE, Hexachrome, PANTONE Hexachrome, and PANTONE MATCHING SYSTEM are the property of Pantone, Inc. PEARL, PEARLsetter, PEARLhdp, PEARLdry, and PEARLgold are registered trademarks of Presstek, Inc.. Technical data subject to change without notice.