

Customer User Addendum

Fiery Network Controller for DocuColor 240/250, version 1.1

This document supplements your Fiery Network Controller for DocuColor 240/250 version 1.1 user documentation and describes new features added since version 1.0. Before using the Fiery Network Controller for DocuColor 240/250, make a copy of this *Customer User Addendum* and distribute it to all users.

NOTE: This document uses the term “Fiery” to refer to the Fiery Network Controller for DocuColor 240/250.

New features for version 1.1

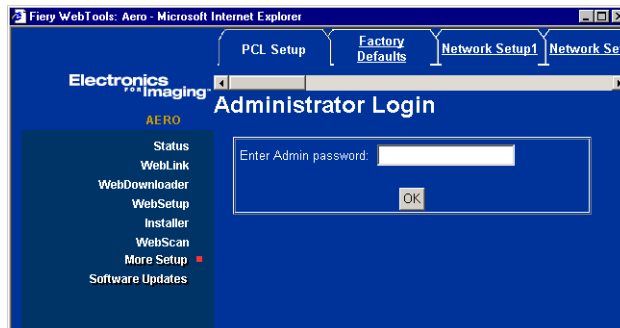
The following new features have been added in this version:

- Security through IP Filtering and Port Blocking
See “IP Filtering and Port Blocking” on page 5.
- Clarification of requirements for using LDAP server
See “LDAP Server Setup” on page 7.
- Cancel on Mismatch

A job whose media is not available can be cancelled after a specified timeout. See “Cancel on Mismatch” on page 4.

- Additional password entry for More Setup

In WebTools, when you click More Setup, you are prompted for the administrator password.



- Tray 5 Media Protection
Copier damage is prevented with Tray 5 Media Protection if jobs printed from Tray 5 (Bypass) do not specify a media type. See “Tray 5 Media Protection option” on page 5.
- Support for Tray 6 (Oversized) option
Tray 6 (Oversized) is a new installable option that accommodates larger paper than the regular Tray 6 option. See “Tray 6 (Oversized)” on page 12.

- Support for Impose option
Impose is an optional application accessed through Command WorkStation.
For more information about Impose, see “Impose” on page 10.
- Support for Color Profiler option
Color Profiler is an optional application for creating color profiles for printers.
For more information, see the documentation that accompanies Color Profiler.
- Larger memory upgrade option
A memory upgrade of up to 1 GB is now offered as an option.
- Command WorkStation upgrade
A new version of Command WorkStation, Windows Edition, is provided (version 4.4).
This version adds support for tray alignment, printing groups, and mixed media jobs.
For more information, see Command WorkStation, Windows Edition Help.
- Mailbox/Job Template utility in WebScan
The Mailbox/Job Template utility in WebScan has a new user interface and supports the ability to send a scan to an FTP location through a mailbox. See “WebScan” on page 9.
- “Printer’s default” setting for Face-Down Printing option
The Face-Down Printing option now has a Printer’s default setting, which is its default setting in the printer driver. This setting means that the print job uses the Face-Down Printing setting specified on the Fiery, which you can view and edit in WebSetup, under Printer Setup > PS Setup.
- Print Size option in PCL printer driver
The Print Size option can now be set from the PCL printer driver as well as from the PostScript printer driver. This option facilitates printing booklet jobs where the paper size is twice the size of the document size (for example, a Letter-size document on Tabloid paper). For details, see “Printing a PDF document as a booklet on Windows (PCL printer driver)” on page 19.
- Mac OS X printer driver choice
In addition to supporting the new Tray 6 (Oversized) option, the Mac OS X printer driver in version 1.1 also addresses issues on Mac OS X with finisher options for folding and stapling. For more information, see “Two versions of Mac OS X printer driver” on page 17.
- Clarification of requirements for printing booklets
See “Booklet printing” on page 17.
- Clarification of requirements for printing a duplex job in manual or semi-manual mode
See “Manual duplex printing” on page 21.

- Additional color profiles

The following color profiles have been added for improved image quality:

- CMYK simulation profiles: ISO Coated and ISO Uncoated
 - RGB source profile: Fiery RGB
 - Output profiles updated to version 2. The updated profiles have improved color quality and are identified by “v2” in the profile name.
- Calibration sets and output profiles for Enhanced Gloss Level
- ColorWise Pro Tools supports additional calibration sets and associated output profiles to use when printing with the Gloss Level print option set to Enhanced. See “Calibration sets and output profiles” on page 8.

Included patches

Version 1.0 patches included in version 1.1

Fiery Network Controller for DocuColor 240/250 version 1.1 includes the following version 1.0 patches:

Patch name	Issue(s) addressed
1-JEOQ9	Slow printing 20-page 11x17 document downloaded to the Print queue via Command WorkStation
1-JIBTX	Batched jobs cannot be cancelled from copier MIB-64i-hrSWInstalledName.1 does not show complete version number
1-JELHP	Wrong URL for IP Filtering and IP Port Blocking
1-JEJY4	Multi-set booklet job stops printing with no error message
1-JRX75	Tab Shift (in Mixed Media) shifts text by more than 0.5 when 0.5 is specified
1-JVSP9	If a booklet Front Cover or Back Cover is set to Print on Back or Print on Both, the Fiery tries to print the cover on the same media as the booklet content, rather than the cover media With job batching on, cancelling a booklet job from copier causes next job to print as booklet With job batching off, cancelling a booklet job from copier causes error 012-261 on next job
1-JC9JD	Fiery does not automatically reboot after a Network setting is changed from the copier
1-JTZ1E	Stepped transitions appear in gradients
1-JXV77	MIB-prtMarkerSuppliesLevel.1.13 value is greater than prtMarkerSuppliesMaxCapacity.1.13

Patch name	Issue(s) addressed
1-KDOJ2	Jagged edges in some fonts
	Stepped transitions appear in gradients
	Support for the Gray Font feature of the copier
	Change default RGB Source Profile to Fiery RGB, which is more appropriate for office users
	Add output profiles to support HeavyWeight2 calibration
1-KM45N	Add Cancel on Mismatch feature (see “Cancel on Mismatch option” on page 4)
1-KMQ81	PS Cover Page is missing Pages Requested, Page Size, and Status

Cancel on Mismatch

Cancel on Mismatch option

The Cancel on Mismatch option causes a job to be cancelled if the media specified for the job (size and weight) is not available. The job is cancelled with an error and moved to the Printed queue, allowing the Fiery to continue printing other jobs.

The Cancel on Mismatch Timeout option specifies the number of minutes that the Fiery waits before cancelling a mismatched job. The default setting is 5 minutes, and the maximum setting is 999 minutes. To disable this option, set the timeout value to 0.

Set the Cancel on Mismatch option in WebTools, on the Misc. Setup tab of More Setup.

Tray 5 Media Protection

Tray 5 Media Protection option

By default, a job prints with the copier's default media type, which is Plain, because the default setting for the Media Type print option is Use Machine Settings. However, Tray 5 (Bypass) does not detect the media type actually loaded in the tray. If users load heavyweight media in Tray 5, the copier still prints with settings for Plain media, which can damage the fuser.

The Tray 5 Protection option protects the fuser by automatically printing with settings for Heavyweight 2 media for jobs that have all the following conditions:

- Paper Source is Tray 5 (Bypass)
- Media Type is not specified
- The copier Media Type is set to one of the following:
 - Plain
 - Recycled
 - Plain (Side 2)
 - Hole Punched
 - Custom 1
 - Custom 2
 - Custom 3
 - Custom 4
 - Custom 5

To print from Tray 5 (Bypass) with settings for Plain media, you must select Plain as the Media Type or disable the Tray 5 Media Protection option.

Set the Tray 5 Media Protection option in WebTools, on the Misc. Setup tab of More Setup. This option is enabled by default.

IP Filtering and Port Blocking

Security through IP Filtering and Port Blocking

IP Filtering allows you to set controlled access to the Fiery by specifying IP address(es) that the Fiery can either permit or reject. This prevents unlimited access to the Fiery over your network and ensures network security in your environment.

Port Blocking allows you to close unnecessary ports and help reject inbound access from the network.

To access IP Filtering and Port Blocking, you must log on with Fiery Administrator privileges. For more information, see *Configuration and Setup*.

TO ACCESS IP FILTERING AND PORT BLOCKING

1 **Start your Internet browser.**

2 **Type the following address:**

http://<Fiery IP Address>/cgi-bin/ss_cgi/ss.cgi

3 **Type the Administrator password.**

IP Filtering

By default, the Fiery permits all IP addresses. To control access, you can set an IP address or a range of IP addresses.

NOTE: If you filter out all IP addresses, WebSetup is no longer accessible. To revert this, you must reinstall the system software. For more information, see the *Installation and Service Guide*.

NOTE: When you enter an IP address range, the ending IP address must be greater than or equal to the starting IP address.

NOTE: Do not enter “0.0.0.0” or “255.255.255.255”.

To filter IP addresses or ranges of IP address, enter an IP address or IP address range and specify how you want the IP address(es) to function:

- **Disabled** specifies that this IP filter is not used.
- **Accept (Address)** allows access of this IP address.
- **Deny (Address)** denies access of this IP address.
- **Accept (Range)** allows access of this IP address range.
- **Deny (Range)** denies access of this IP address range.

Port Blocking

Click the IP Port Setup tab and specify which ports to enable or disable.

All ports not listed in the following Setup options are closed. Supported protocols are listed parenthetically, following the port number.

- **SNMP (161-162)**

ENABLED/DISABLED [ENABLED]

Select Enabled to enable the 161-162 (SNMP) ports. (WebTools and Command WorkStation)

- **NetBIOS (137-139)**

Enabled/Disabled [Enabled]

Select Enabled to enable the 137-139 (NetBIOS) ports. (SMB printing)

- **LPD (515)**
Enabled/Disabled [Enabled]
Select Enabled to enable the 515 (LPD) port. (WebTools and LPD printing over Windows)
- **Port 9100 (9100-9103)**
Enabled/Disabled [Enabled]
Select Enabled to enable the 9100-9103 (Port 9100) ports. (Port 9100 printing)
- **EFI Ports (8021-8022, 21030, 9906)**
Enabled/Disable [Enabled]
Select Enabled to enable EFI ports 8021-8022. (WebTools, Command WorkStation, and printer driver Two-Way Communication feature)
- **IPP (631)**
Enabled/Disabled [Enabled]
Select Enabled to enable the 631 (IPP) port. (IPP printing over Windows)

LDAP Server Setup

LDAP server requirements

If you enable an LDAP server (in More Setup), you must also meet the following requirements:

- Make sure that the LDAP server IP address and host name are registered on the DNS server, and that DNS Setup is enabled on the Fiery. To enable DNS Setup, select Enable DNS Setup on the Protocol2 tab of Network Setup.
- You must enable the Fiery e-mail service (on the Service3 tab of Network Setup) to allow LDAP to access corporate e-mail addresses from Remote Scan.
- In a Windows Server 2003 Active Directory DNS environment, add the Fiery to the Windows Active Directory Domain. Otherwise, the LDAP feature may not be able to resolve the LDAP Server name. The Windows domain setting is on the Service2 tab of Network Setup.
- Make sure that the time difference between the LDAP server and the System Time of the Fiery is 5 minutes or less. Set the time on the Fiery using WebSetup.
- Make sure that the time zone and Daylight Saving Time (DST) options on the Fiery match the settings on the LDAP server. The default settings are Universal Time Coordinated (UTC) for time zone and DST disabled. Change these settings in WebTools, on the Time Zone tab of More Setup.

Calibration sets and output profiles

New calibration sets and output profiles

ColorWise Pro Tools supports additional calibration sets and associated output profiles to use when printing with the Gloss Level print option set to Enhanced. The following tables show how the calibration sets correspond to the output profiles for U.S. and European systems:

U.S.:

Calibration set	Output profile
Media = Plain	Fiery DC250 DCX+ 24lb v2F
Media = Plain (Enhanced)	Fiery DC250 DCX+ 24lb. Glossy v2F
Media = Coated 1	Fiery DC250 DC Gloss 100lb v2F
Media = Coated 1 (Enhanced)	Fiery DC250 DCGloss 100lb. Glossy v2F
Media = Heavyweight 2	Fiery DC250 Cover 80lb. v1F

European:

Calibration set	Output profile
Media = Plain	Fiery DC250 Colotech 90gsm v2F
Media = Plain (Enhanced)	Fiery DC250 Colotech 90gsm Glossy v2F
Media = Coated 1	Fiery DC250 Colotech+ Gloss Coated 140gsm v2F
Media = Coated 1 (Enhanced)	Fiery DC250 Colotech+ Gloss Coated 140gsm Glossy v2F
Media = Heavyweight 2	Fiery DC250 Colotech+ 220gsm v1F

To perform calibration for one of these calibration sets, run Calibrator and select one of the new selections for Media Type: Plain (Enhanced) or Coated 1 (Enhanced). The measurement pages are printed with the Gloss Level set to Enhanced.

When you print with the Output Profile set to Use Media-Defined Profiles and the Gloss Level set to Enhanced, the “Glossy” version of the output profile associated with the selected media type is used.

WebScan

New user interface for Mailbox/Job Template utility

The Mailbox/Job Template utility has a new user interface.

The screenshot shows a web browser window titled "Mailbox Utility - Microsoft Internet Explorer". The page has a blue header with the "efi" logo and "Mailbox" and "About" tabs. The main content area is titled "Create New Mailbox/Job Template" and contains several form fields and controls:

- *Mailbox** (required): A text input field.
- Password**: A text input field.
- Verify Password**: A text input field.
- Template Description**: A text input field.
- Output Color/Original Type**: A dropdown menu set to "Full Color".
- 2 Sided Originals**: A dropdown menu set to "1 Sided".
- Scan Resolution**: A dropdown menu set to "200 dpi".
- Scan Size**: Radio buttons for "Auto Size Detect", "Mixed Size Originals", "Letter (8.5 x 11")", and "0.6 x 0.6 inch".
- Reduce/Enlarge**: Radio buttons for "Variable: 100 %", "Preset: 100%", and "Auto: Letter (8.5 x 11)".
- Auto Exposure**: A dropdown menu set to "Off".
- Contrast**: A dropdown menu set to "Normal".
- Lighten/Darken**: A dropdown menu set to "Normal".
- Sharpness**: A dropdown menu set to "Normal".
- Image Compression**: A dropdown menu set to "Normal".
- Automatically upload the scanned files to the FTP server.
- Buttons: "Create", "Cancel", and "Reset".

With version 1.1, you can select an option to “Automatically upload the scanned files to the FTP server”. If you select this option, scans sent to this mailbox are automatically transferred to an FTP location. Fields appear that allow you to specify the details of the FTP site.

The screenshot shows a form for configuring FTP upload options. It includes the following fields and controls:

- Automatically upload the scanned files to the FTP server.
- Delete scanned file from mailbox when FTP is successful.
- Server Host**: A text input field.
- Host directory**: A text input field.
- Port number**: A text input field with "21" entered and a checked "Use default" checkbox.
- Timeout**: A text input field with "30" entered and the label "seconds".
- Anonymous login.
- Username**: A text input field.
- Password**: A text input field.
- Use Proxy.
- Validate button.

If you select Use Proxy, additional fields appear that allow you to specify information about the proxy server.

Proxy Address: Enter the IP address of the proxy server.

Port Number: Enter the port number on the proxy server (default is 21).

User Name: Enter the proxy server user name.

Password: Enter the proxy server password.

After you enter the information for the FTP site, click Validate to confirm that the Fiery can write a test file to the FTP site. If the test is unsuccessful, you may see one of the following messages:

Message	What it means
FTP destination is available, but all files need unique filenames	A file with the test file name already exists at the FTP destination, and you do not have permission to overwrite it.
FTP destination exists, but you don't have permission to write to it	Make sure you have write permission at the FTP destination.
FTP destination doesn't exist	Make sure you entered the FTP server information correctly.
Invalid proxy setup	Make sure you entered the proxy server information correctly.

Impose

Support for Impose option

Impose is a utility (available as an option) that you access from Command WorkStation, Windows Edition. Impose allows you to do the following:

- Apply imposition layouts to jobs for custom printing, binding, and cutting.
- Apply impositions to variable data jobs.

Installing Impose

The Impose software is automatically installed when you install Command WorkStation, Windows Edition from the User Software (Utilities) CD.

Do not attempt to install Impose from the User Software (Utilities) CD (by starting the setup.exe from the Impose folder); Impose is automatically installed when you install Command WorkStation. Installing Impose separately from the User Software (Utilities) CD can cause unpredictable results.

To enable Impose on a client workstation, you must:

- Install Adobe Acrobat and the Enfocus PitStop plug-in module.

NOTE: Adobe Acrobat and Enfocus PitStop software are provided in the Impose media pack.

- Install the Impose software protection key (dongle) in the USB port of the client workstation.

NOTE: You can run Impose in demo mode without the dongle installed. In demo mode, all pages from Impose are output with “DEMO” printed across the page.

If a dongle is installed on the workstation, Impose has already been enabled, and is ready for use. If a dongle is not installed, see the documentation that accompanies the Impose kit.

Using Impose

Complete instructions for using Impose are provided in Command WorkStation, Windows Edition Help.

TO ACCESS IMPOSE HELP

- 1 **Start Command WorkStation, Windows Edition.**
- 2 **Choose Help from the Help menu.**

Use the Contents, Index, or Search panes to navigate to the Impose Help topics.

Tray 6 (Oversized)

Using the Tray 6 (Oversized) option

In version 1.1, an additional high-capacity feeder paper tray option is supported, Tray 6 (Oversized). Tray 6 (Oversized) can accommodate all supported media types and the following paper sizes: Letter, Tabloid, Legal, A4, A3, 13x9 SEF, SRA3 SEF, 12x18 SEF, 11x17 SEF, A3 SEF, B4 SEF, 8.5x14 SEF, 8.5x13 SEF, B5 LEF, A4 LEF, A4 SEF, 8.5x11 SEF, 8.5x11 LEF, and PostScript Custom Page Size. The copier can be configured with this option instead of the regular Tray 6.

To print using the Tray 6 (Oversized) option, you must install the version 1.1 printer driver that allows you to configure the Tray 6 (Oversized) installable option and set the Paper Source print option to Tray 6 (Oversized).

TO INSTALL AND CONFIGURE THE VERSION 1.1 PRINTER DRIVER ON WINDOWS

- 1 If the version 1.0 printer driver is installed, remove it using the Fiery Printer Delete Utility.

For information about using this utility, see the Printing Utilities chapter of *Printing from Windows*.

- 2 Install the version 1.1 printer driver, either from the CD or using WebTools.

For more information, see the Installing Printer Drivers and Setting Up Printing Connections chapters of *Printing from Windows*.

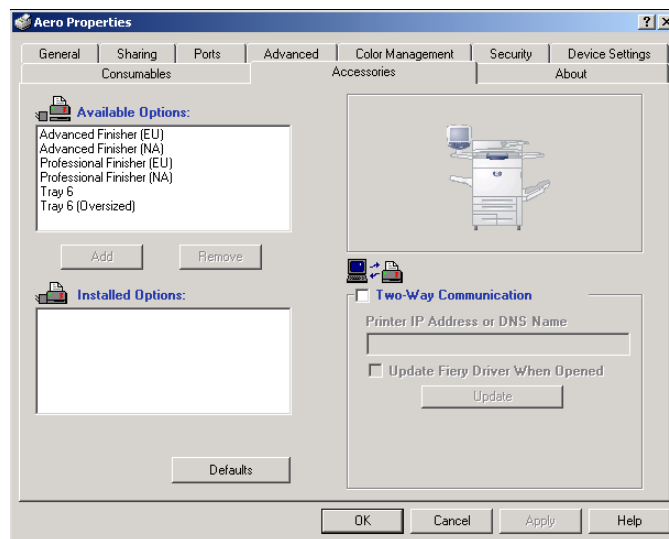
- 3 Windows 2000: Click Start, choose Settings, and then choose Printers.

Windows XP: Click Start and choose Printers and Faxes.

Windows Server 2003: Click Start, choose Control Panel, and then choose Printers and Faxes.

- 4 Click the Fiery icon and choose Properties from the File menu.

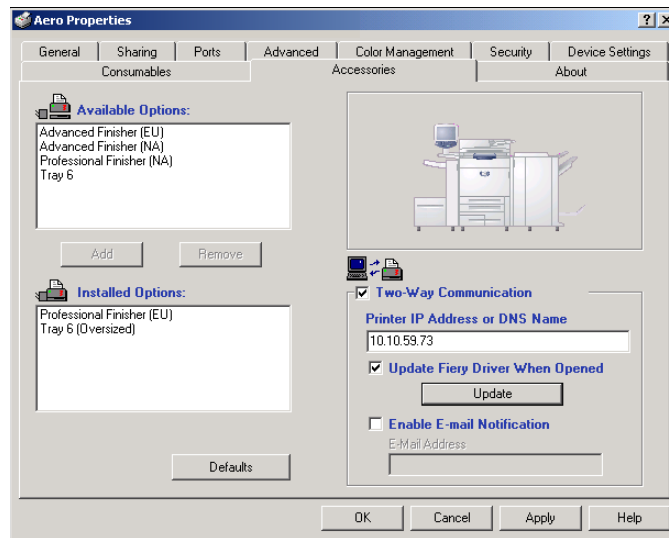
- 5 Click the Accessories tab.



- 6 To manually set the Tray 6 (Oversized) option, select the option in the Available Options list and click Add to move the option to the Installed Options list.

- 7 Alternatively, to configure installed options automatically by retrieving the settings from the Fiery, select **Two-Way Communication**, type the Fiery IP address or DNS name, and then click **Update**.

If the Tray 6 (Oversized) option is configured at the server, it appears in the Installed Options list.



- 8 Click **Apply**, and then click **OK**.

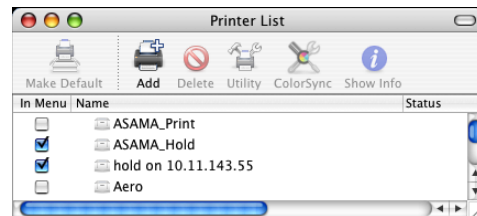
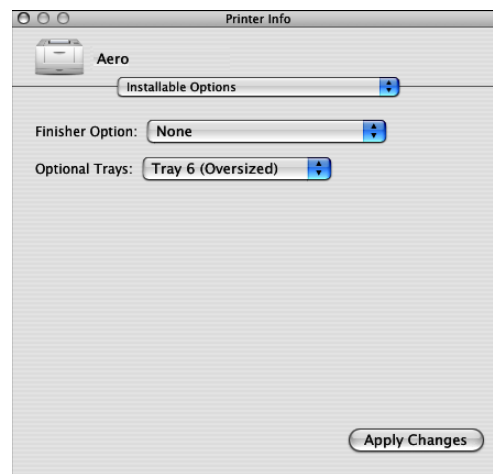
TO INSTALL AND CONFIGURE THE VERSION 1.1 PRINTER DRIVER ON MAC OS X
1 If the version 1.0 printer driver is installed, remove it.

For instructions, see the following procedure.

2 Install the version 1.1 printer driver, either from the CD or using WebTools.

You can install a Fast version or Comprehensive version. For more information, see “Two versions of Mac OS X printer driver” on page 17.

For more information about installing and configuring the printer driver, see the Setting Up Printing on Mac OS X chapter of *Printing from Mac OS*.

3 Choose Utilities from the Go menu and start Printer Setup Utility or Print Center.
4 Select your printer in the Printer List.

5 Choose Show Info from the Printers menu.
6 Choose Installable Options.
7 Choose Tray 6 (Oversized) from the Optional Trays menu.

8 Click Apply Changes.
9 Close the window.

TO REMOVE THE MAC OS X PRINTER DRIVER

1 Delete any printer icon from the desktop.

2 Delete the following files:

- /Library/Frameworks/h10.framework
- /Library/Frameworks/hcore.framework
- /Library/Frameworks/hefi_color.framework

3 To remove the version 1.0 printer driver, delete the following files:

- /Library/Printers/PPD Plugins/EF5X1012 (CW)
- /Library/Printers/PPD Plugins/EF5X1012 (FJN)
- /Library/Printers/PPD Plugins/EF5X1012 (PINFO)

4 To remove the version 1.1 printer driver, delete the following files:

- /Library/Printers/Xerox/PDEs/EF5M1012 (CW)
- /Library/Printers/Xerox/PDEs/EF5M1012 (FJN)
- /Library/Printers/Xerox/PDEs/EF5M1012 (PINFO)

5 Browse to /Library/Printers/PPDs/Contents/Resources and delete the PPD files DocuColor 240 PS and DocuColor 250 PS in each corresponding language folder, as necessary.

For example, to delete the English PPDs, delete /Library/Printers/PPDs/Contents/Resources/en.lproj/DocuColor 240 PS and /Library/Printers/PPDs/Contents/Resources/en.lproj/DocuColor 250 PS.

6 Delete the fierycupfilter with the Terminal utility (requires the root administrator password).

- Open the Terminal utility by browsing to /Applications/Utilities/Terminal. Double-click Terminal to start the utility.

- Change to the fierycupfilter directory by typing

```
cd /usr/libexec/cups/filter
```

The command prompt reflects the new directory.

- Type

```
sudo rm -r fierycupfilter
```

- Type the root password.

By default, this password is blank. Press Enter to proceed.

The fierycupfilter is deleted, and the printer driver has been removed.

Mac OS X printer drivers

Two versions of Mac OS X printer driver

When you install the Mac OS X printer driver for version 1.1, you can install a Fast version, which does not check for incompatible print option settings but runs faster, or a Comprehensive version, which prevents you from choosing incompatible print option settings at the expense of some processing time. A dialog box in the OS X installer lets you choose the version.



The Fast version addresses issues on Mac OS X with folding and stapling. Use the Fast version if the copier is configured with a finisher and you want to print folded and/or stapled jobs. Be aware that if you choose incompatible print option settings, your job might not print as expected. For instructions on setting print options when printing a booklet, see “Printing a booklet from Mac OS X v10.4” on page 20.

If you install the Comprehensive version and then later decide to install the Fast version, you must remove the Comprehensive version first, using the procedure on page 16.

Be sure to remove any version 1.0 printer drivers before installing the printer driver for version 1.1. For instructions, see the procedure on page 16.

Booklet printing

Printing a booklet from Microsoft Word on Windows (PostScript printer driver)

Booklet printing requires that a finisher is installed on the copier and that the printer driver is configured with the installed finisher. For information about configuring installable options, see *Printing from Windows*.

The following procedure explains how to set the correct print options for printing an 8.5x11 Microsoft Word document as a booklet on 11x17 paper, or for printing an A4 document as a booklet on A3 paper, using the Windows PostScript printer driver.

NOTE: If you print multiple copies of a booklet, make sure to clear the Collate option in Microsoft Word. Otherwise, all the copies print as one booklet.

TO PRINT A BOOKLET FROM MICROSOFT WORD USING THE WINDOWS POSTSCRIPT PRINTER DRIVER

- 1 **Open the document in Microsoft Word.**
- 2 **Choose File >Page Setup.**
- 3 **Set the Paper Size to 8.5x11 SEF (A4 SEF) and Orientation to Portrait.**

NOTE: This step may change the appearance of the text on the page.
- 4 **Choose File >Print, select the Fiery as your printer, and then click Properties.**
- 5 **On the Fiery Printing tab, open the Paper Source bar and choose the following settings:**

Page Size: 8.5 x11 SEF (A4 SEF)
Print Size: 11x17 SF (A3 SEF)
- 6 **Open the Layout bar and choose the following setting:**

Orientation: Portrait
- 7 **Open the Finishing bar and choose the following settings:**

Duplex: Top-Top
Face-down Printing: Face Up
Fasten Mode: Fold or Fold and Staple
Output Tray: Booklet Output Tray
Booklet Maker: Saddle
Imposition Reduction: Select this option
- 8 **Optionally, set one or more of the following options under the Finishing bar:**
 - Creep Adjustment
 - Centering Adjustment
 - Back Cover
 - Front Cover
 - Cover Source
- 9 **Click OK to close the Properties window.**
- 10 **Set the number of copies.**
- 11 **Click OK to submit the job for printing.**

Printing a PDF document as a booklet on Windows (PCL printer driver)

Booklet printing requires that a finisher is installed on the copier and that the printer driver is configured with the installed finisher. For information about configuring installable options, see *Printing from Windows*.

The following procedure explains how to set the correct print options for printing an 8.5 x 11 PDF document as a booklet on 11 x 17 paper, or for printing an A4 document as a booklet on A3 paper, using the Windows PCL printer driver.

TO PRINT A PDF DOCUMENT AS A BOOKLET USING THE WINDOWS PCL PRINTER DRIVER

- 1 **Open the document in Adobe Acrobat or Acrobat Reader.**
- 2 **Choose File > Print Setup.**
- 3 **Set the Paper Size to 8.5x11 SEF (A4 SEF) and Orientation to Portrait.**
- 4 **Choose File > Print, select the Fiery as your printer, and then click Properties.**
- 5 **On the Fiery Printing tab, open the Paper Source bar and choose the following settings:**
Page Size: 8.5x11 SEF (A4 SEF)
Print Size: 11x17 SEF (A3 SEF)
- 6 **Open the Layout bar and choose the following setting:**
Orientation: Portrait
- 7 **Open the Finishing bar and choose the following settings:**
Duplex: Top-Top
Face-down Printing: Face Down
Fasten Mode: Fold or Fold and Staple
Output Tray: Booklet Output Tray
Booklet Maker: Saddle
- 8 **Optionally, set one or more of the following options under the Finishing bar:**
 - Creep Adjustment
 - Back Cover
 - Front Cover
 - Cover Source
- 9 **Click OK to close the Properties window.**
- 10 **Set the number of copies.**
- 11 **Click OK to submit the job for printing.**

Printing a booklet from Mac OS X v10.4

Booklet printing requires that a finisher is installed on the copier and that the printer driver is configured with the installed finisher. For information about configuring installable options, see *Printing from Mac OS*.

The following procedure explains how to set the correct print options for printing an 8.5x11 document as a booklet on 11x17 paper, or for printing an A4 document as a booklet on A3 paper, using the Mac OS X v10.4 printer driver.

TO PRINT A BOOKLET FROM MAC OS X v10.4

- 1 Open the document in its application.**
- 2 Choose File >Page Setup.**
- 3 Select the Fiery as your printer.**
- 4 Set the Paper Size to 8.5x11 SEF (A4 SEF), set Orientation to Portrait, and then click OK.**
- 5 Choose File >Print.**
- 6 Select the Fiery as your printer, and then choose Printer Features from the drop-down list.**
- 7 Choose Paper Source 2 from the Feature Sets list.**
- 8 Set Print Size to 11x17 SEF (A3 SEF).**
- 9 Choose Finishing 1 from the Feature Sets list.**
- 10 Set Duplex to Top-Top.**
- 11 Choose Finishing 2 from the Feature Sets list.**
- 12 Set Fasten Mode to Fold or Fold and Staple.**
- 13 Choose Finishing 4 from the Feature Sets list.**
- 14 Set Face-Down Printing to Face up.**
- 15 Choose Finishing 1 from the Feature Sets list.**
- 16 Set Booklet Maker to Saddle.**
- 17 Choose Finishing 3 from the Feature Sets list.**
- 18 Select the Imposition Reduction option.**

19 Optionally, set one or more of the following options:

- Creep Adjustment (under Finishing 3)
- Centering Adjustment (under Finishing 2)
- Back Cover (under Finishing 2)
- Front Cover (under Finishing 2)
- Cover Source (under Finishing 2)

20 Click Print to submit the job for printing.**Manual duplex printing****Manual duplex printing using Tray 5 (Bypass) or Tray 6 (Oversized)**

Manual duplex printing is supported using either Tray 5 (Bypass) or Tray 6 (Oversized) as the paper source. You can print duplex output in a fully manual mode, determining the required paper manipulation yourself, or you can print in a semi-manual mode, in which the Fiery prompts you to perform the manual steps required.

TO PRINT IN A FULLY MANUAL MODE**1 Print two jobs: the first containing the even-numbered (Side 2) pages, and the second containing the odd-numbered (Side 1) pages.**

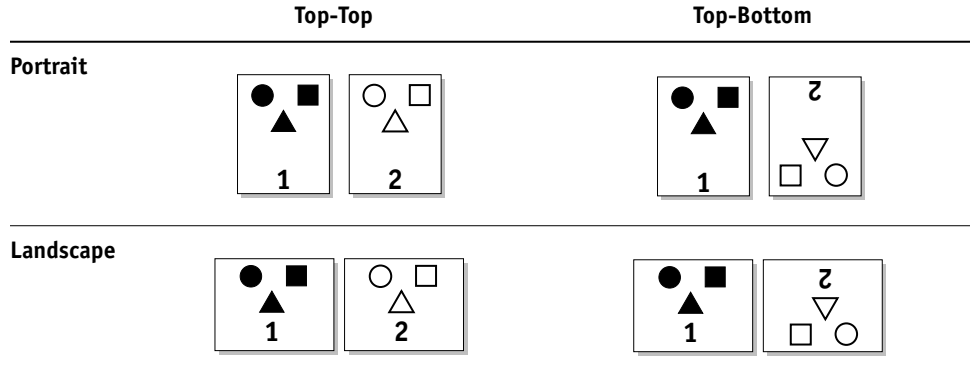
Since the jobs are separate, you can print from different applications, if required.

2 For the first job, set the print options as follows:

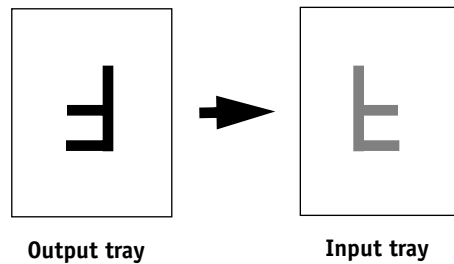
- Face-Down Printing = Face Up
- Paper Source = Tray 5 (Bypass) or Tray 6 (Oversized)
- Page Size and Media Type = type of media loaded in the Paper Source

3 Print the first job.**4 Notice how the pages are oriented in the output tray.****5 Turn the pages over so that the printed side faces down, and then load them back in the same tray used to print the first job.**

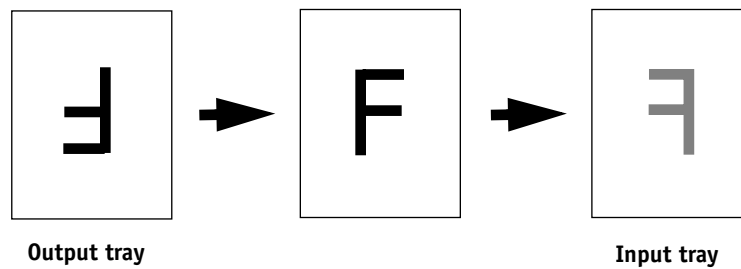
Depending on how you load the pages, you can print Side 2 with the same orientation as Side 1 (Top-Top) or rotated 180 degrees relative to Side 1 (Top-Bottom).



For Top-Top printing, keep the pages oriented the same way as they were in the output tray, except face down. For example, if the pages are upside down and face up, load them upside down and face down.



For Top-Bottom printing, rotate the pages 180 degrees and turn them face down.



NOTE: For jobs imposed using Impose, always flip the pages along the long edge of the page.

- 6 **Print the second job with the same settings as the first, but set the Media Type to the Side 2 setting that corresponds to Media Type you used for the first job.**

For example, if you printed the first job using Plain (64-105 gsm), print the second job using Plain (Side 2) (64-105 gsm).

TO PRINT IN SEMI-MANUAL MODE

1 Choose Print in your application.

2 Set the print options as follows:

- Manual Duplex = Manual
- Face-Down Printing = Face Up
- Paper Source = Tray 5 (Bypass) or Tray 6 (Oversized)

3 Print the job.

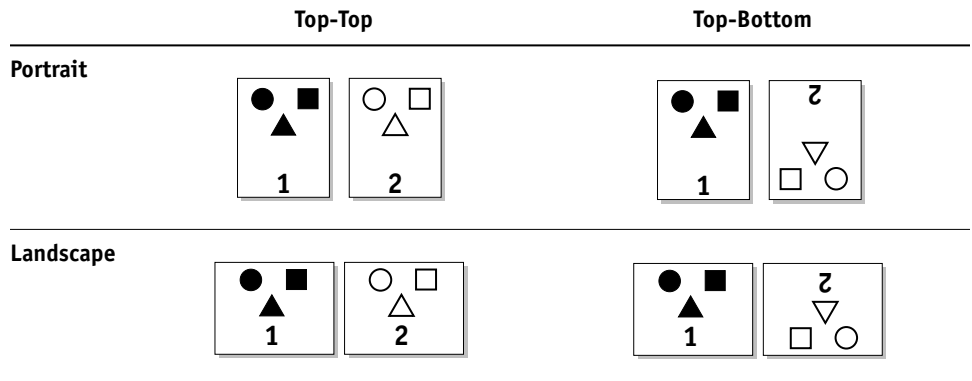
The even-numbered pages are printed.

4 If you are printing from Tray 5 (Bypass), remove any unused paper from the tray.

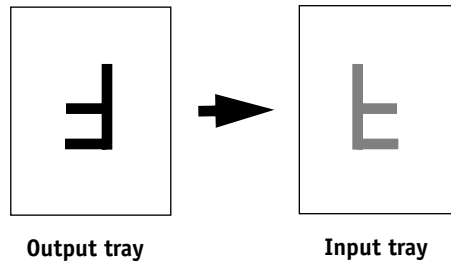
5 Notice how the pages are oriented in the output tray.

6 Turn the pages over so that the printed side faces down, and then load them back in the same tray used to print the first side.

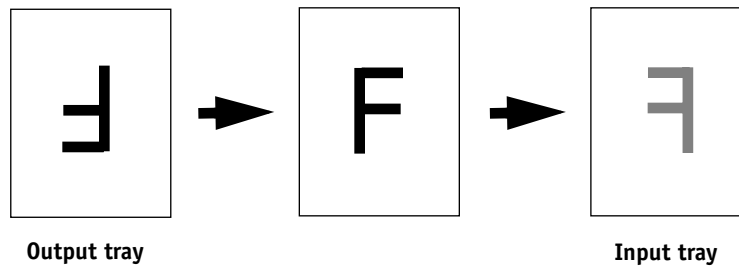
Depending on how you load the pages, you can print Side 2 with the same orientation as Side 1 (Top-Top) or rotated 180 degrees relative to Side 1 (Top-Bottom).



For Top-Top printing, keep the pages oriented the same way as they were in the output tray, except face down. For example, if the pages are upside down and face up, load them upside down and face down.



For Top-Bottom printing, rotate the pages 180 degrees and turn them face down.



NOTE: For jobs imposed using Impose, always flip the pages along the long edge of the page.

7 For Tray 6 (Oversized), press the Start button on the copier control panel.

Tray 5 (Bypass) detects that the pages have been loaded. You do not need to press Start.

The odd-numbered pages are printed.