



Fiery® EXP4110
SERVER & CONTROLLER SOLUTIONS



Printing from Mac OS

© 2005 Electronics for Imaging, Inc. The information in this publication is covered under *Legal Notices* for this product.

45051577

22 September 2005

CONTENTS

INTRODUCTION	5
Terminology and conventions	6
About this document	7
User software	8
Downloading printer drivers using WebTools	9
System requirements	9
SETTING UP PRINTING ON MAC OS X	10
Installing Mac OS X printer drivers and printer description files	11
Setting up the Fiery EXP4110 on Mac OS X	12
PRINTING FROM MAC OS X	15
Printing from applications with Mac OS X	16
Setting print options and printing from Mac OS X	16
Defining custom page sizes from Mac OS X	19
Enabling Two-Way Communication	21
INDEX	23





INTRODUCTION

This document describes how to install printer drivers and printer description files for the Fiery EXP4110, and how to set up printing from Mac OS X computers. It also describes how to print to the Fiery EXP4110. For information about setting up network servers and clients to use the Fiery EXP4110, see *Configuration and Setup*. For general information about using the printer, your computer, application software, or network, see the documentation that accompanies those products.

The Fiery EXP4110 supports the Xerox 4110.

Terminology and conventions

This document uses the following terminology and conventions.

Term or convention	Refers to
Aero	Fiery EXP4110 (in illustrations and examples)
Fiery EXP4110	Fiery EXP4110
Mac OS	Apple Mac OS X
Printer	Xerox 4110
Titles in <i>italics</i>	Other documents in this set
	Topics for which additional information is available by starting Help in the software
	Tips and information
	Important information
	Important information about issues that can result in physical harm to you or others

The Fiery EXP4110 includes support for WebTools, which allows you to download printer drivers and printer description files to your desktop for installation on your Mac OS computer.

About this document

This document covers the following topics:

- Installing printer files on Mac OS computers
- Setting up printing connections on Mac OS computers
- Printing from Mac OS computers

User software

The User Software (Drivers) CD provides the following Fiery EXP4110 user software.

Adobe PostScript Printer Driver	Allows you to print to the Fiery EXP4110 from Mac OS computers. The printer driver also supports Fiery EXP4110 and PostScript 3 features.
PostScript Printer Description (PPD/Plugin) file	For use with the PostScript printer driver that allows the Fiery EXP4110 to appear in the Print and Page Setup dialog boxes of popular applications. The Fiery EXP4110 PPDs provide information about the printer to your application and printer driver.
PostScript fonts	PostScript screen and printer fonts that correspond to the PostScript printer fonts installed on the Fiery EXP4110. For a complete list of PostScript fonts installed on the Fiery EXP4110, see the Downloader, described in <i>Utilities</i> .

Downloading printer drivers using WebTools

You can install printer drivers and printer description files from the User Software (Drivers) CD or directly from the Fiery EXP4110 with WebTools.

For more information about setting up and starting WebTools, see *Utilities*.

TO DOWNLOAD PRINTER DRIVERS WITH WEBTOOLS

- 1 Start your Internet or intranet browser and type the DNS name or IP address of the Fiery EXP4110.**
- 2 Select a logon level, type a password, if required, and then click OK.**

No password is required to log on as a guest. If the administrator has configured guest access, any user has full access to the Downloads tab while logged on as a guest.

- 3 Click the Downloads tab.**
- 4 Click the link for the printer drivers that you want to install (Printer Files for OS X).**

A file named OSX.dmg is downloaded to your desktop. The file contains a folder named Printer Driver in a BinHex-encoded, compressed format. If your Internet browser is equipped with an expander utility, such as StuffIt Expander, the folder decodes and decompresses automatically.

If the Printer Driver folder does not automatically decode and decompress, double-click the file to start the utility that performs that function.

- 5 Install the appropriate printer driver for your operating system.**

For instructions on installing the printer driver for

See

Mac OS X

[“Installing Mac OS X printer drivers and printer description files”](#) on page 11

System requirements

For detailed system requirements, see *Welcome*, provided in your media pack.

SETTING UP PRINTING ON MAC OS X

To set up the Fiery EXP4110 as a PostScript printer on a Mac OS X computer, install the printer driver and the printer description files that correspond to your printer. The PostScript printer driver and printer description files are provided on the User Software (Drivers) CD. Printer drivers provide a way to communicate information about print jobs between your applications, the Fiery EXP4110, and the printer.

Installing Mac OS X printer drivers and printer description files

The User Software (Drivers) CD contains the following software for Mac OS X (see the OSX:Printer Driver folder):

- **OSX Installer:** Installs the PostScript Printer Description files (PPDs) and PPD plug-ins required to print from Mac OS X.
- **Language folders:** Printer description files that are installed by OSX Installer. You do not need to open these folders or install them manually on your computer. The appropriate files are installed by OSX Installer.

TO INSTALL THE PRINTER DESCRIPTION FILES FOR MAC OS X

1 Quit all open applications.

2 Make sure that the Printer Setup Utility (or Print Center) is not running on your computer.

Printer Setup Utility (or Print Center) updates the list of available printers when it restarts. If a printer description file is added while Printer Setup Utility (or Print Center) is running, you cannot select the associated printer model until you restart.

3 Insert the User Software (Drivers) CD into the CD-ROM drive.

4 Open the OSX:Printer Driver folder on the User Software (Drivers) CD.

If you are installing from the files you downloaded using WebTools, browse to the Printer Driver folder on your desktop.

5 Double-click the OSX Installer icon to start installing the printer driver.

NOTE: The PPD files are installed in the following locations:

On an English system: en.lproj under <Startup disk>:Library:Printers:PPDs:Contents:Resources.

On a non-English system: in a similar folder under <Startup disk>:Library:Printers:PPDs:Contents:Resources.

If the PPD files are not successfully installed, manually copy the PPD files to the appropriate folder or folders.

6 Follow the on-screen instructions.

The OSX Installer installs the printer driver files that correspond to the Fiery EXP4110.

7 When copying is complete, click Quit.

Setting up the Fiery EXP4110 on Mac OS X

After you install the printer driver files on Mac OS X, you must set up the Fiery EXP4110 in the Printer Setup Utility (or Print Center). This section describes how to set up the Fiery EXP4110.

You must also configure the Fiery EXP4110 for the options installed on the printer to allow the Fiery EXP4110 to take advantage of the printer options. Configure the options manually, or for TCP/IP network connections, use the Two-Way Communication feature to configure the options automatically.

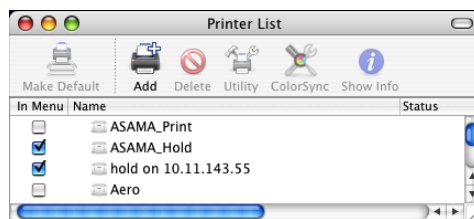
Installable option	Selections
Finisher Option	None, D-Finisher
Folder Tray Option	Not Installed, Folder Tray
Interposer	Not Installed, Interposer
Booklet Tray Option	Off, On
Optional Trays	Not Installed, Trays 6 and 7 (HCF)
Punch Option	Not Installed, 2/3 hole Punch, 2/4 hole Punch

NOTE: For more information about the print settings that use these options, see *Print Options*.

TO SET UP THE FIERY EXP4110 IN THE PRINTER SETUP UTILITY (OR PRINT CENTER)

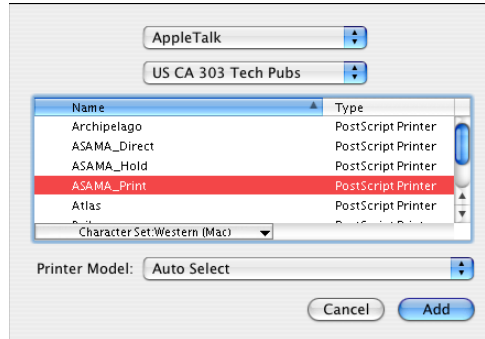
- 1 Choose Applications from the Go menu, open the Utilities folder, and start Printer Setup Utility (or Print Center).

The Printer List dialog box appears.

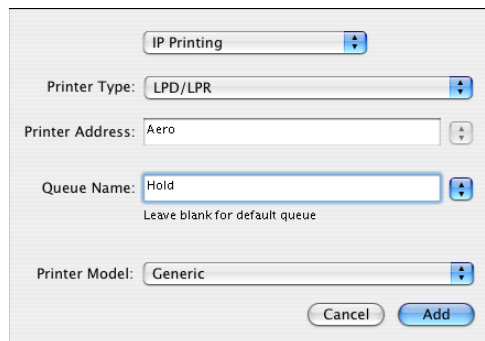


- 2 Click Add.
- 3 Choose AppleTalk or IP printing from the menu that appears.
- 4 For AppleTalk, choose the AppleTalk Zone and choose the name of the Fiery EXP4110.

If the zone is not listed as the Default Zone, or one of the Recent Zones, select AppleTalk Network, select the zone, and then click Choose. Proceed to [step 5](#).



For IP Printing, type the IP address or DNS name of the printer in the Printer Address field, and the print connection (Print, Hold, or Direct) in the Queue Name field.



- 5 For Printer Model, choose the appropriate manufacturer name or model, and then select the file for the Fiery EXP4110 PPD.**

If the manufacturer or model is not listed, choose Other and browse to the location of the PPD.

- 6 Click Add.**

The Fiery EXP4110 is added to the list of printers.

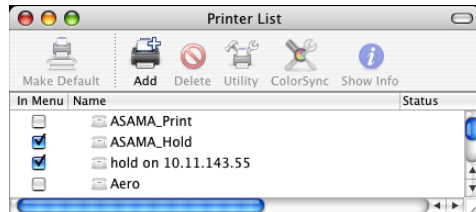
- 7 (Optional) With the Fiery EXP4110 selected, choose Printers > Create Desktop Printer. Specify a name and location for the icon and click Save.**

You can print a file to the Fiery EXP4110 by simply clicking and dragging the file to the Fiery EXP4110 Desktop Printer icon.

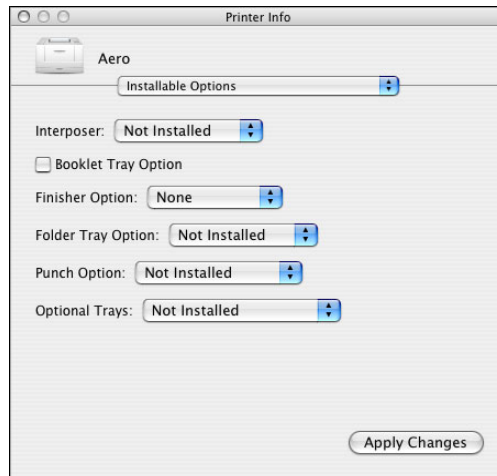
You are now ready to configure installable options for the Fiery EXP4110.

To CONFIGURE INSTALLABLE OPTIONS

- 1 Choose Utilities from the Go menu and start Printer Setup Utility (or Print Center).
- 2 Select your printer in the Printer List.



- 3 Choose Show Info from the Printers menu.
- 4 Choose Installable Options.



- 5 Select the appropriate settings.
- 6 Click Apply Changes.
- 7 Close the window.

PRINTING FROM MAC OS X

Print to the Fiery EXP4110 just as you would print to any other printer from a Mac OS X application. Select a printer and print the file from within the application. In addition to this method, you can download files to the Fiery EXP4110 using Downloader or the Print WebTool (see *Utilities*), and print documents using Command WorkStation (see *Utilities*).

Printing from applications with Mac OS X

Once you install the Fiery EXP4110 printer description files using the OSX Installer, you can print directly from most Mac OS X applications. For more information about installing printer description files with the OSX Installer see [page 11](#).

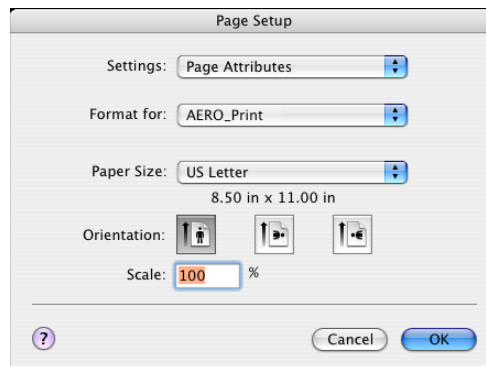
Setting print options and printing from Mac OS X

In Mac OS X applications, print options are set from the Page Setup dialog box and the Print dialog box. For information about specific print options, see [Print Options](#).

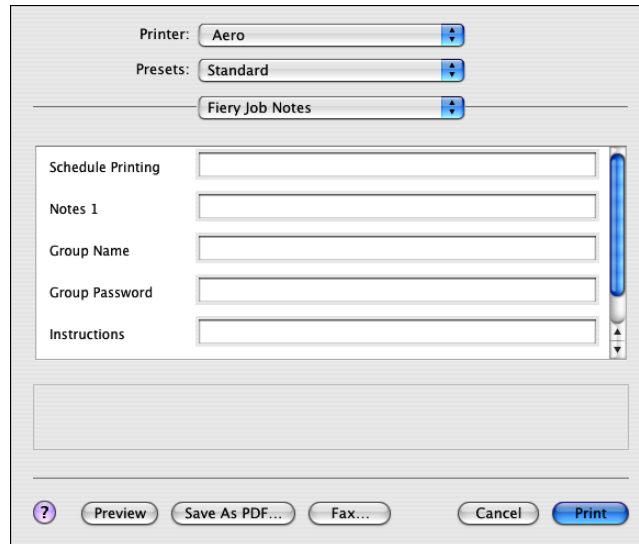
NOTE: Some default print options are set by your administrator during Setup. For information about the current server default settings, contact your administrator or operator.

TO SET PRINT OPTIONS AND PRINT FROM MAC OS X

- 1 Open a file and choose Page Setup from the application's File menu.
- 2 For Settings, choose Page Attributes. For Format for, choose the Fiery EXP4110.



- 3 Select the Page settings for your print job.
- 4 Click OK.
- 5 Choose Print from the application's File menu.
- 6 Choose the Fiery EXP4110 as your printer.

7 Choose Fiery Job Notes from the drop-down list.

Type user and job identification information for managing purposes, or whatever information is required at your site.

8 Type an account name in the Group Name field.

The Group Name appears in the Job Log. The account name is defined by your administrator for managing purposes. Consult your administrator for the account name.

9 Type a password in the Group Password field.

The Group Password appears in the Job Log, but it is encrypted. The password is defined by your administrator for managing purposes. Consult your administrator for the password.

When the account name and password you entered match those defined by the administrator, your job is printed. Otherwise, an error is generated, and your job is placed in the Printed queue with an error indication.

The administrator or operator can edit the Group Name and Group Password from the Command WorkStation Properties dialog box.

For more information about Command WorkStation, see *Utilities*.

NOTE: Group Name and Group Password options are not available when printing to the Direct connection.

10 Type information in the Notes field.

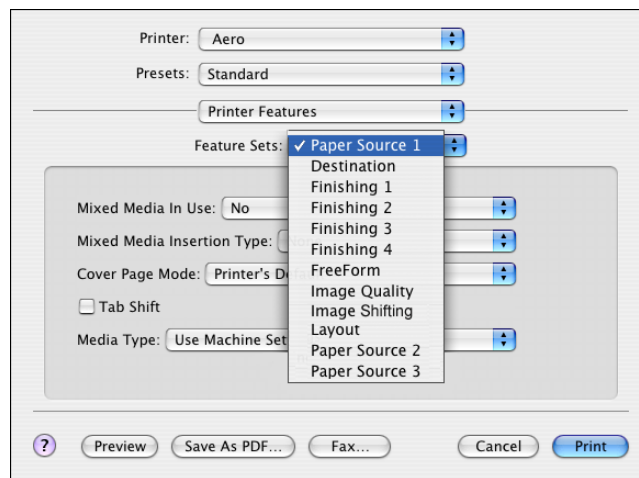
The information you type in the Notes field can be viewed and edited by the operator at Command WorkStation and also appears in the Job Log.

11 In the Instructions field, type instructions to the operator about the job.

These instructions can be displayed in Command WorkStation, but do not appear in the Job Log. These instructions *can* be edited by the operator.

12 If you are sending a secure print job, type a password in the Secure Print field.**13 To shift the position of the print image on the page, choose Image Shift from the drop-down list and specify the shift distances.**

You might need to shift the print image to allow for binding, for example.

14 Choose Printer Features to specify printer-specific options. Specify settings for each selection in the Feature Sets menu.

These print options are specific to the Fiery EXP4110 and the printer. You must choose each Feature Set to see all the options. These options override settings in Fiery EXP4110 Printer Setup, but can be changed from Command WorkStation.

If you choose Printer's default, the job prints according to the settings specified in Setup.

For more information about these options and overrides, see [Print Options](#).

Some print options that are selectable from an application are similar to the print options that are specific to the Fiery EXP4110 and the printer. In these cases, use the print options specific to the Fiery EXP4110 and the printer, which appear in the Printer Features menu. The application may not set up the file properly for printing on the Fiery EXP4110, resulting in unexpected printing errors and longer processing time.

If you select an invalid setting or combination of settings when printing a document, no error message appears. For example, you may be able to select duplex printing on transparency media. Invalid settings and combinations are ignored by the Fiery EXP4110.

15 Click Print.

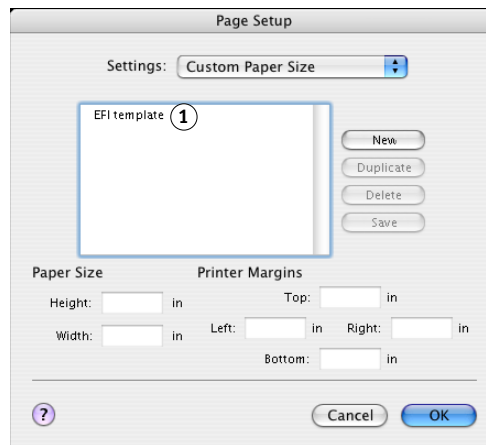
Defining custom page sizes from Mac OS X

With custom page sizes, you define page dimensions and margins. After you define a custom page size, you can use it from within an application without redefining it each time you print.

TO DEFINE A CUSTOM PAGE SIZE

- 1 Choose Page Setup from the application's File menu.
- 2 Choose Custom Paper Size from the Settings menu.

1 Custom page names



- 3 Click New and type a name for the custom page size.
- 4 Enter the page dimensions and margins.
- 5 Click Save.
- 6 Click OK to exit.

The custom page size you defined is added to the list of Paper Size selections in the Page Setup dialog box.

TO EDIT A SAVED CUSTOM PAGE SIZE

- 1 Choose Page Setup from the application's File menu.
- 2 Choose Custom Paper Size from the Settings menu.
- 3 Select the Custom Page Size name.
- 4 Edit the page dimensions and margins.
- 5 Replace the existing Custom Page name by clicking it.
- 6 Click Save.
- 7 Click OK to exit.

TO DELETE A CUSTOM PAGE SIZE

- 1 Choose Page Setup from the application's File menu.
- 2 Choose Custom Paper Size from the Settings menu.
- 3 Click the Custom Paper Size name.
- 4 Click Delete.
- 5 Click OK to exit.

TO MAKE A COPY OF THE CUSTOM PAGE SIZE

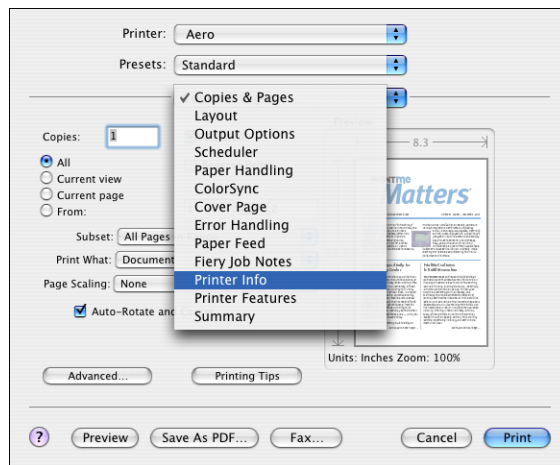
- 1 Choose Page Setup from the application's File menu.
- 2 Choose Custom Paper Size from the Settings menu.
- 3 Click the Custom Paper Size name.
- 4 Click Duplicate.
- 5 Click OK to exit.

Enabling Two-Way Communication

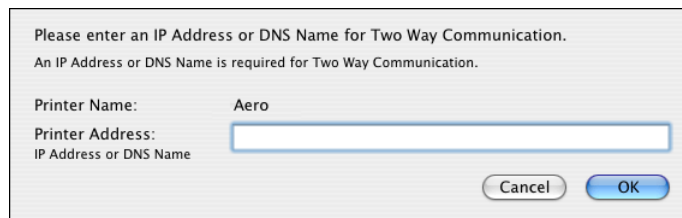
If you enabled a TCP/IP network, you can retrieve printer status from the Fiery EXP4110 and display it in the printer driver using the Two-Way Communication feature. The printer status includes the current paper and toner levels.

TO ENABLE TWO-WAY COMMUNICATION

- 1 Open a file and choose Print from the application's File menu.
- 2 Select the Fiery EXP4110 as your printer.
- 3 Choose Printer Info and select the Two-Way Communication option.

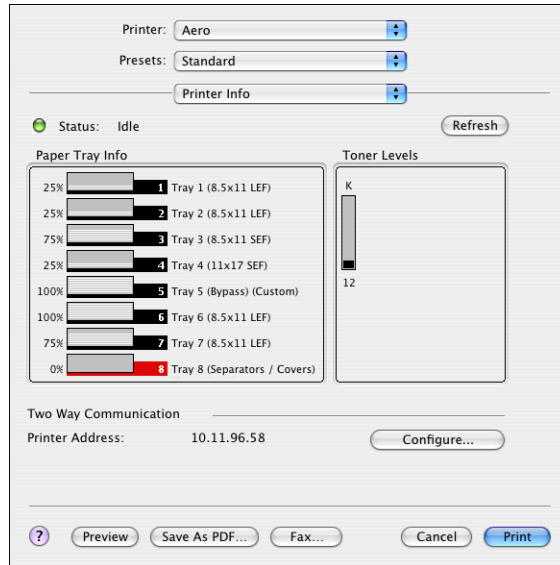


A dialog box appears requesting an IP address or DNS name.



NOTE: If the dialog box does not appear automatically, click Configure.

- 4 Type the Fiery EXP4110 IP address or DNS name.
- 5 Click OK.
- 6 To update the printer status in the Printer Info window, click Refresh.



INDEX

A

- AppleTalk
 - connecting to Mac OS X 12
- AppleTalk connection, in Printer Setup Utility (or Print Center) 12

B

- Booklet Tray option 12

C

- Command WorkStation 15, 17
- custom page size
 - defining for Mac OS X 19

D

- default print options 16
- Downloader 15
- Downloading 9

F

- Feature Sets 18
- Fiery Job Notes 17
- Finisher option 12
- Folder Tray option 12

G

- Group Name 17
- Group Password 17

I

- installable options
 - specifying in Mac OS X 14
- installing
 - printer driver for Mac OS X 11
- Installs tab in WebTools 9
- Instructions field 18
- Interposer option 12
- IP Printing, in Printer Setup Utility (or Print Center) 13

M

- Mac OS X
 - PPD 16
 - print options 16
 - printer driver installation 11
 - printer driver setup 12

N

- Notes field 17

O

- Optional Trays 12
- OSX Installer 11, 16

P

- Page Setup dialog box 16
- PostScript fonts 8
- PostScript Printer Description file, *see* PPD
- PPD
 - Mac OS X 11, 16
 - overview 8
- Print Center 11, 12
- Print dialog box 16
- print options
 - Mac OS X 16
- Print tab in WebTools 15
- printer driver
 - downloading 9
 - installation, Mac OS X 11
 - setup, Mac OS X 12
- Printer Features 18
- Printer Setup Utility 11, 12
- Printer's default 18
- Punch option 12

T

- Tray 6 (HCF2) 12
- Tray 7 (HCF2) 12

W

- WebTools Installs 9
- WebTools Print 15

