

Card Reader Plug-ins README

For [Card_Reader_Plug-ins_v12](#)

Xerox® VersaLink® Series

Xerox® PrimeLink® Series

WorkCentre 5325/5330/5335

Xerox Color C60/70

Xerox D-Series

Versant 180

Release Date: Feb 8, 2022

© 2022 Xerox Corporation. All rights reserved. Xerox® and VersaLink® are trademarks of Xerox Corporation in the United States and/or other countries. BR32009

Other company trademarks are also acknowledged.

Document Version: 1.5 (February 8,2022).

Contents

1. Plug-in Release Details.....	1-1
2. Fixes/Features new in this release.....	2-1
3. Fixes / Features from previous releases	3-2
4. VersaLink Installation Instructions	4-4
All Plug-ins: Activating the Plug-in Feature	4-4
All Plug-ins: Deactivating Plug-ins	4-5
Authentication Plug-ins	4-5
Installation of Xerox USB Card Reader	4-5
Installation with Certain 3rd party solutions and the TWN4 Smart Card Reader	4-6
Installation Instructions for CAC/PIV	4-6
Installation Instructions for SIPRNet	4-6
Installation Instructions for GemNet	4-7
5. PrimeLink Installation Instructions	5-7
All Plug-ins: Activating the Plug-in Feature	5-7
All Plug-ins: Deactivating Plug-ins	5-7
Authentication Plug-ins	5-7
For a Typical Installation	5-7
6. WC 53xx/XC C60/C70, Versant 180, Xerox D-Series Installation Instructions	6-8
All Plug-ins: Activating the Plug-in Feature	6-8
All Plug-ins: Deactivating Plug-ins	6-9
Authentication Plug-ins	6-9
For a Typical Installation	6-9
Plug-in Overview.....	6-10
Convenience Authentication	6-10
Smart Card Authentication	6-11
Required Plug-Ins	6-11
Not Covered in this Document	6-12

1. Plug-in Release Details

Download the Plug-in Package ZIP File from the below location:

Link for [Card Reader Plug-ins v12](#)

Plug-in Name	Ver	Filename	DMP Products	PrimeLink	VersaLink
Xerox USB Card Reader	3.0.11	Xerox_USB_Card Reader_DPV_v3.0.11_sig.jar	Yes	Yes	Yes
Modernized CAC Smartcard Service Plugin	3.0.0	Modernized_CAC_Smartcard_Service_DP V_Plugin-3.0.0.jar.sig.enc	Yes	Yes	Yes
GemNet SmartCard Service	1.0.18	GemNetSmartCardService-1.0.18_sig.jar.enc	No	Yes	Yes
CCID Terminal Plugin	1.2.0	CCID_Terminal_Plugin_DPV_1.2.0.jar.sig.zip	Yes	Yes	Yes
TWN4 Card Reader Service	1.0.0	EIP_API_Card_Reader_Service_Plugin_v1_0_sig.jar.enc	No	Yes	Yes

Plug-in filename contains the letters D, P or V preceding the version number. Each letter indicates the products that the plugin supports.

- D = DMP products (**WC 53xx Models, XC60/70 Models, D-Series, Versant 180**)
- P = PrimeLink® products (**PL C90xx, B91xx**)
- V = VersaLink® products (**All VersaLink Models**)

2. Fixes/Features new in this release

	Product	Plug-ins Name	Ver	SFR# / SPAR#	Description
V12	DMP PrimeLink VersaLink (except WC 6515/ PH 6510)	Modernized CAC Smartcard Service Plug-ins	3.0.0	20907	<p>Update of the Modernized CAC Smart Card Service and CCID Terminal plug-ins to support additional CAC and NEATS cards Provide support for the following cards:</p> <ol style="list-style-type: none"> 1) Gemalto TOP DL V2.1 144K FIPS <ol style="list-style-type: none"> a. v2.7.4 Applet smart card with Modernized Version of the CAC PIV Endpoint cert structure. b. ATR: 3B 7D 96 00 00 80 31 80 65 B0 75 49 17 0F 83 00 90 00 2) IDEMIA ID-one 125 V8.0D <ol style="list-style-type: none"> a. v2.7.4 Applet Modernized CAC smart card with Modernized Version of the CAC PIV Endpoint cert structure. b. ATR: 3B D8 18 00 80 1F 07 80 31 C1 64 08 06 92 0F DF 3) Giesecke & Devrient Sm@rtCafe Expert v7.0 144K DI <ol style="list-style-type: none"> a. v2.7.5 Applets with Modernized Version of the CAC PIV Endpoint cert structure b. ATR: 3B F9 18 00 00 00 53 43 45 37 20 03 00 20 46 4) Giesecke & Devrient Sm@rtCafe Expert v7.0 144K DI <ol style="list-style-type: none"> a. v2.7.5 Applets with Alternate Token (NEATS) cert structure. b. ATR: 3B F9 96 00 00 80 31 FE 45 53 43 45 37 20 0F 00 20 46 4E <p>Warning: VersaLink® system firmware version xx.61.23 or later is required.</p> <p>Warning: PrimeLink® C9065/9070 system firmware version 85.5.31 or later is required.</p> <p>Warning: PrimeLink® B9100 system firmware version 95.4.51 or later is required.</p>
		CCID Terminal Plug-ins	1.2.0		

3. Fixes / Features from previous releases

Content is cumulative in newer plug-ins

	Product	Plug-in Name	Ver	SFR# / SPAR#	Description
V11	PrimeLink VersaLink (except WC 6515/ PH 6510)	CCID Terminal Plug-ins	1.1.3	1452650 1453533	<p>Addressed issues where certificate data could not be read from the G&D FIPS Stopgap CAC with ATR String 3b f9 18 00 00 00 53 43 45 37 20 03 00 20 46. This resulted in login failures for some users and the inability to send Email (signed or otherwise) for others.</p> <p>Warning: VersaLink® system firmware version xx.61.23 or later is required.</p> <p>Warning: PrimeLink® C9065/9070 system firmware version 85.5.31 or later is required.</p> <p>Warning: PrimeLink® B9100 system firmware version 95.4.51 or later is required.</p>
V10	PrimeLink VersaLink (except WC 6515/ PH 6510)	Modernized CAC Smartcard Service Plug-ins	2.0.1	1434066	<p>Update of the CAC/PIV Smart Card Service and CCID Terminal plug-ins</p> <p>1) Modernized CAC - Addressed an issue where the GUID could not be obtained from the PIV v5 Oberthur/Idemia ID-One Cosmo v8.0 128K with PIV 2.4.0 card that resulted in the user not being prompted to enter a PIN after inserting the CAC/PIV into the USB Card Reader on the VersaLink device.</p> <p>2) CCID Terminal - Addressed an issue where certificate data could not be read from the PIV v5 Oberthur/Idemia ID-One Cosmo v8.0 128K with PIV 2.4.0 that resulted in a "please wait" message on the VersaLink UI after the user entered his or her PIN and the user was returned to the Logon Screen (no login occurred).</p> <p>Warning: VersaLink® system firmware version xx.61.23 or later is required.</p> <p>Warning: PrimeLink® C9065/9070 system firmware version 85.5.31 or later is required.</p> <p>Warning: PrimeLink® B9100 system firmware version 95.4.51 or later is required.</p>
		CCID Terminal Plug-ins	1.1.2		
V9	PrimeLink VersaLink	Xerox USB Card Reader	3.0.11	FR-19150 FR-19977	SFR – Added Blackboard MRD5 and Inepro SCR708 card readers to Xerox USB Card Reader Plug-ins
V9	PrimeLink VersaLink (except WC 6515/ PH 6510)	Modernized CAC Smartcard Service Plug-ins	2.0.0	FR-19151 FR-17493	<p>SFR – Update of the CAC/PIV Smart Card Service and CCID Terminal plug-ins to support new IDEMIA Cosmo v8.0 and v8.1 (BAP 087484) contact smart cards with new ID-One PIV® EndPoint Standard Profile, including NEATS cards.</p> <p>Warning: VersaLink® system firmware version xx.61.23 or later is required.</p> <p>Warning: PrimeLink® C9065/9070 system firmware version 85.5.31 or later is required.</p> <p>Warning: PrimeLink® B9100 system firmware version 95.4.51 or later is required.</p> <p>Sample cards include:</p> <ul style="list-style-type: none"> IDEMIA Cosmo v8.0, 128k, T-1 NEATS smart card (ATR = 3B D8 18 00 80 B1 FE 45 1F 07 80 31 C1 64 08 06 92 0F) with PIV 2.7.4 applet

	Product	Plug-in Name	Ver	SFR# / SPAR#	Description
					<ul style="list-style-type: none"> IDEMIA Cosmo v8.1 (Part Number 1585242) PIV smart card (ATR = 3B D6 97 00 81 B1 FE 45 1F 87 80 31 C1 52 41 1A 2B) with ID-One PIV® 2.4.1 applet <p>NOTE:</p> <ul style="list-style-type: none"> Supports certificates with 2048-bit RSA keys Cards and certificates must expire before January 19, 2038 Used with SCM Microsystems / Identiv SCR3310v2.0 card reader only Supports all cards supported by Modernized CAC Smartcard Service Plugin v1.0.0 Support is provided for: <ul style="list-style-type: none"> Authentication, allowing copy and print The Scan-To function (email aka "scan to self," home) Email encryption Email signing Secure Print Job release The smart card whether or not FIPS mode is enabled
N/A	PrimeLink VersaLink (except WC 6515/ PH 6510)	Modernized CAC Smartcard Service Plugin	1.0.0	FR-17508	<p>SFR – Dual Persona CAC/PIV Rollover and Modernized CAC Cards Support</p> <p>Update of the CAC/PIV Smartcard Service Plugin to support new Common Access Cards with reduced / realigned certificate profiles (Modernized CAC).</p> <p>Supports multipersona CAC cards when installed with firmware xx.61.01 or later with ability to search through all certificates on a card and attempt authentication with each valid certificate that supports smart card logon before communicating failure to the end user.</p> <p>Support new smart card tokens:</p> <ul style="list-style-type: none"> Giesecke + Devrient Mobile Security FIPS201 SmartCafe Expert 7.0 with HID Global ActivID Applet v2.7.5, ATR: 3b f9 18 00 00 00 53 43 45 37 20 03 00 20 46 Gemalto TOP DL V2.1 128K with HID Global ActivID Applet v2.7.4. ATR: 3B 7D 96 00 00 80 31 80 65 B0 75 49 17 0F 83 00 90 00 <p>Warning: VersaLink® system firmware version xx.61.01 or later is required.</p>
N/A	PrimeLink VersaLink (except WC 6515/ PH 6510)	CCID Terminal Plugin	1.0.0	FR-17508	<p>SFR – Dual Persona CAC/PIV Rollover and Modernized CAC Cards Support</p> <p>Warning: VersaLink® system firmware version xx.61.01 or later is required.</p>
N/A	PrimeLink VersaLink (except WC 6515/ PH 6510)	CCID Terminal Plugin	0.9.9	FR-17679	<p>SFR – PIV Priority</p> <p>SFR FR-17679 - Dual Persona CAC/PIV CAC Cards Support</p> <p>Warning: PrimeLink® system firmware version 85.5.31 or later is required.</p> <p>Update of the CAC/PIV Smartcard Service Plugin to support Dual Persona CAC/PIV cards (containing both CAC and PIC authentication certificates)</p>

	Product	Plug-in Name	Ver	SFR# / SPAR#	Description
N/A	PrimeLink VersaLink (except WC 6515/ PH 6510)	CAC Priority Smartcard Service Plugin	1.0.1	FR-17679 V FR-17611 P	SFR FR-17679 – PIV Transitional Smart Card Support SFR FR-17611 – PIV endpoint card edge Support Warning: PrimeLink® system firmware version 85.5.31 or later is required. Update of the CAC/PIV Smartcard Service Plugin to support both PIV card transitional or PIV endpoint PIV data models.
N/A	PrimeLink VersaLink (except WC 6515/ PH 6510)	PIV Priority Smartcard Service Plugin	1.0.1	FR-17679 V FR-17611 P	SFR – PIV Transitional Smart Card Support
N/A	PrimeLink VersaLink (except WC 6515/ PH 6510)	CAC Priority Smartcard Service Plugin	1.0.0	FR-17611	SFR – PIV Transitional Smart Card Support SFR – PIV endpoint card edge Support Warning: PrimeLink® system firmware version 85.5.31 or later is required. Update of the CAC/PIV Smartcard Service Plugin to support both PIV card transitional or PIV endpoint PIV data models.
N/A	VersaLink (except WC 6515/ PH 6510)	PIV Priority Smartcard Service Plugin	1.0.0	FR-17611	SFR – PIV Transitional Smart Card Support
V8	VersaLink	Xerox USB Card Reader (CR 3.0.07)	3.0.7		Support Convenience Authentication.
V8	VersaLink	CAC & PIV Smartcard Service Plugin	0.9.2		CAC & PIV Smartcard Service Plug-in_v0.9.2_sig.jar.
V8	VersaLink	CCID Terminal Plugin	0.9.5		Supports CCID-compliant card readers.
N/A	VersaLink	Xerox USB Card Reader (CR.3.0.04)	3.0.4		N/A

4. VersaLink Installation Instructions

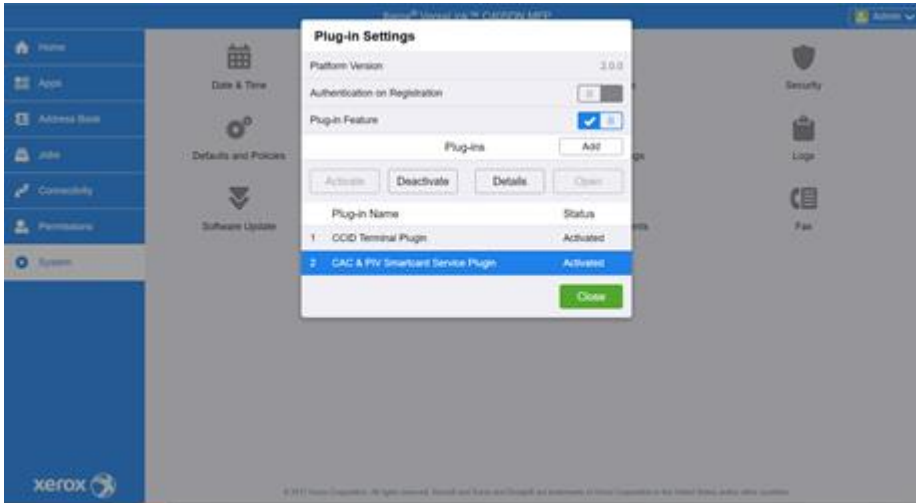
The following installation instructions assume all plug-ins need to be installed or upgraded – if the current version of a particular plug-in is already installed, it need not be re-installed.

All Plug-ins: Activating the Plug-in Feature

Before Plug-ins can be used, the Plug-in Feature must be enabled:

1. Ensure proper system firmware version is installed per tables in section 2 and 3.
2. Ensure proper device options have been selected. Some configuration options may be selected after the plug-in has been installed.
 - E.g., options related to USB power during sleep mode.
 - E.g., options related to EIP.
 - E.g., options related to locking down access.
 - E.g., ensure the NTP server setup is complete, or ensure the date and time is in sync with the authentication server.
 - See the device's System Administrator Guide for details.
3. On the device webpage, select **Log In**, and then log in to the device as **Admin**.
4. Select **System**.

5. Select **Plug-in Settings**. The screen should appear as below (the list of plug-ins may be different):



VersaLink® products can authenticate that a plug-in that is about to be registered was indeed created by Xerox® – if this is a desirable feature:

- i. Slide **Authentication on Registration** to the right, to the checked position.
 - ii. When prompted, choose **Restart Now** if the Plug-Ins feature is in the checked position. No other action must be taken. Choose **Restart Later** if the Plug-Ins feature is not in the checked position.
6. Slide **Plug-in Feature** to the right, to the checked position.
 7. Select **Restart Now** when prompted.

All Plug-ins: Deactivating Plug-ins

Before Plug-ins can be updated old versions must be deactivated

1. On the device webpage, select **Log In**, and then log in to the device as Admin.
2. Select **System**.
3. Select **Plug-in Settings**. Deactivate each plug-in:
 - o Select the plug-in.
 - o Select **Deactivate**.
4. Reboot and return to the **Plug-in Settings** page by following steps 1-3
 - o To reboot, go to the **Home** page, and then click the **Support** quick link, and then click **Restart Device**.

Authentication Plug-ins

INSTALLATION OF XEROX USB CARD READER

1. Extract all files from the ZIP file to a convenient location on your computer.
2. Go to the **Plug-in Settings** page, as described under “**All Plug-ins: Activating the Plug-in Feature.**”
 - o If the **Xerox USB Card Reader** plug-in is not on the **Plug-in Settings** page:
 - i. Select **Add**.
 - ii. Browse to the location of the **Xerox USB Card Reader** file you previously extracted from the ZIP file.
 - iii. Select the plug-in file using the normal file selection process.
 - o If the **Xerox USB Card Reader** plug-in is on the **Plug-in Settings** page:
 - i. Deactivate the plugin as described under “All Plug-ins: Deactivating Plug-ins”
 - ii. Select the plug-in from the list of Plug-Ins, to highlight it.
 - iii. Select **Details** (above the list).
 - iv. Select **Update**.
 - v. Browse to the location of the **Xerox USB Card Reader** file previously extracted from the ZIP file.
 - vi. Select the plug-in file using the normal file selection process.
3. Select **Close**.
4. Connect your USB Convenience Authentication card reader to the device’s USB port at this time.

5. Reboot the device to activate the plug-in.
 - To reboot, go to the **Home** page, and then click the **Support** quick link, and then click **Restart Device**.
6. When the system is back online return to the **Plug-In Settings** page and ensure that the USB Card Reader plug-in is **Activated**.
 - If it is not, select the plug-in from the list of Plug-Ins to highlight it.
 - Select **Activate**.

You can now select and configure Convenience Authentication through the device webpage under **Permissions > Login/Logout Settings** and via the authentication solution server.

For further details, please see the “Xerox® VersaLink® Series Multifunction and Single Function Printers System Administrator Guide.”

INSTALLATION WITH CERTAIN 3RD PARTY SOLUTIONS AND THE TWN4 SMART CARD READER

Warning: VersaLink® system firmware version xx.10.71 or later is required.

The **TWN4 Card Reader Service** plug-in is only required for use by specific 3rd party solutions that use the Card Reader "API" method to interface with the card reader. This plug-in enables the Elatec TWN4 card reader for those solutions only.

Of authentication solution providers with whom Xerox® partners, the majority do NOT use this plug-in.

Do not attempt to use this plug-in unless specifically directed to do so by your authentication solution provider.

Please refer to the authentication solution provider for installation instructions.

INSTALLATION INSTRUCTIONS FOR CAC/PIV

1. Extract all files from the ZIP file to a convenient location on your computer.
2. Go to the **Plug-in Settings** page, as described under “All Plug-ins: Activating the Plug-in Feature.”
3. If there is already a **CCID Terminal Plugin** on the **Plug-in Settings** page, deactivate it as described under “All Plug-ins: Deactivating Plug-ins.”
4. If there are already any **CAC & PIV Smartcard Service Plugin** or **Modernized CAC Smartcard Service Plugin** on the **Plug-in Settings** page, deactivate them as described under “All Plug-ins: Deactivating Plug-ins.”
5. Add the **CCID Terminal Plugin**:
 - a. Select **Add**.
 - b. Browse to the location of the **CCID Terminal Plugin** file you previously extracted from the ZIP file.
 - c. Select the plug-in file using the normal file selection process.
6. Add the **Modernized CAC Smartcard Service Plugin**:
 - a. Select **Add**.
 - b. Browse to the location of the **Modernized CAC Smartcard Service Plugin** file you previously extracted from the ZIP file.
 - c. Select the plug-in file using the normal file selection process.
7. Select **Close**.
8. Connect your USB Smart Card reader to the device’s USB port at this time.
9. Reboot the device to activate the plug-ins.
 - a. To reboot, go to the **Home** page, and then click the **Support** quick link, and then click **Restart Device**.
10. When the system is back online return to the **Plug-In Settings** page and ensure that the **CCID Terminal Plugin** and the previously selected **Plugin** are **Activated**.

You can now select and configure Smart Card Authentication through the device webpage under **Permissions > Login/Logout Settings** and via the authentication solution server.

For further details, please see the “Common Access Card for Xerox® VersaLink® Printers System Configuration Guide” or the “Xerox® VersaLink® Series Multifunction and Single Function Printers System Administrator Guide.”

INSTALLATION INSTRUCTIONS FOR SIPRNET

See the instructions that came with the SIPRNet option package.

INSTALLATION INSTRUCTIONS FOR GEMNET

Use the same instructions as for CAC/PIV, except use the **GemNetSmartCardService** plug-in instead of the **Modernized CAC Smartcard Service Plugin**.

5. PrimeLink Installation Instructions

The following installation instructions assume all plug-ins need to be installed or upgraded – if the current version of a particular plug-in is already installed, it need not be re-installed.

All Plug-ins: Activating the Plug-in Feature

Before Plug-ins can be used, the Plug-in Feature must be enabled:

1. Ensure proper system firmware version is installed per tables in section 2 and 3.
2. Ensure proper device options have been selected. Some configuration options may be selected after the plug-in has been installed.
 - E.g., options related to USB power during sleep mode.
 - E.g., options related to EIP.
 - E.g., options related to locking down access.
 - E.g., ensure the NTP server setup is complete, or ensure the timestamp is in sync with the authentication server.
 - See the device's System Administrator Guide for details.
3. On the device webpage, select **Log In**, and then log in to the device as **Admin**.
4. Navigate to [Properties] – [Security] – [Plug-in Settings]
5. Select the **Embedded Plug-ins** sub-page.
6. Check the Embedded Plug-ins **Enabled** box if unchecked. If checked, no further action is needed.
7. Click the **Apply**.
8. Reboot the device to finalize the change.
 - To reboot, navigate to **Status** tab in device webpage and click **Reboot Device**.

All Plug-ins: Deactivating Plug-ins

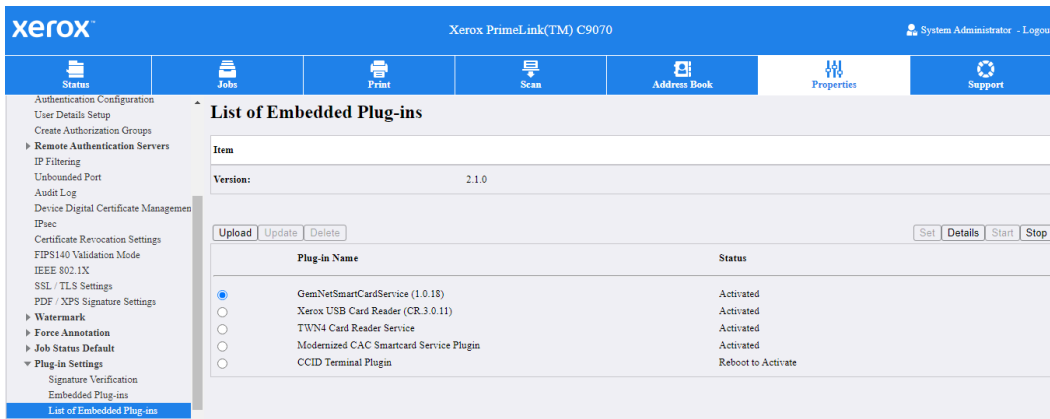
Before Plug-ins can be updated old versions must be deactivated

1. On the device webpage, select **Log In**, and then log in to the device as Admin.
2. Navigate to [Properties] – [Security] – [Plug-in Settings]
3. Select the **Embedded Plug-ins** sub-page.
4. Select **Plug-in Settings**. Deactivate each plug-in:
 - Select the plug-in.
 - Select **Stop**.
5. Reboot and return to the **Plug-in Settings** page by following steps 1-3
 - To reboot, go to the **Home** page, and then click the **Support** quick link, and then click **Restart Device**.

Authentication Plug-ins

FOR A TYPICAL INSTALLATION

1. Extract all files from the ZIP file to a convenient location on your computer.
2. Go to the **Plug-in Settings** page, as described under “All Plug-ins: Activating the Plug-in Feature.”
3. Select **List of Embedded Plug-in** option under **Plug-in settings**.
4. The screen should appear as below (the list of plug-ins may be different):



- If the desired plug-in is not on the **Plug-in Settings** page:
 - I. Click **Upload**
 - II. Click **Choose File** and navigate to the location where you previously extracted the .zip file.
 - III. Select the plug-in file using the normal file selection process and then **Upload**.
 - IV. Based on need, repeat steps 1-3 for each plug-in.
 - a. Please note that you should always update to the latest available version of a Plug-in if one is made available.
 - If the desired plug-in is on the **Plug-in Settings** page:
 - i. Deactivate the plugin as described under “All Plug-ins: Deactivating Plug-ins.”
 - ii. Select the deactivated Plug-in
 - iii. Click **Upgrade**
 - iv. Click **Choose File** and navigate to the location where you previously extracted the .zip file.
 - v. Select the plug-in file using the normal file selection process and then **Upload**
9. Connect your USB Smart Card reader device at this time.
 10. Reboot the device to activate the plug-ins.
 - To reboot, navigate to **Status** tab in device webpage and click **Reboot Device**.
 11. When the system is back online return to the **List of Embedded Plug-ins** page and ensure that the plug-ins are **Activated**

6. WC 53xx/XC C60/C70, Versant 180, Xerox D-Series Installation Instructions

The following installation instructions assume all plug-ins need to be installed or upgraded – if the current version of a particular plug-in is already installed, it need not be re-installed.

All Plug-ins: Activating the Plug-in Feature

Before Plug-ins can be used, the Plug-in Feature must be enabled:

1. Ensure proper system firmware version is installed per tables in section 2 and 3.
2. Ensure proper device options have been selected. Some configuration options may be selected after the plug-in has been installed.
 - E.g., options related to USB power during sleep mode.
 - E.g., options related to EIP.
 - E.g., options related to locking down access.
 - E.g., ensure the NTP server setup is complete, or ensure the timestamp is in sync with the authentication server.
 - See the device’s System Administrator Guide for details.
3. On the device webpage, login into device webpage as Admin.

For Xerox® Color C60/70® Series

4. Navigate to [Properties] - [Security] - [Plug-in / Custom Services Settings] – [Embedded Plug-ins]

For Xerox® WorkCentre® 53xx Series

4. Navigate to [Properties] - [Security] - [Plug-in Settings]
5. Select the **Plug-in Settings** sub-page
6. Check the Plug-in Settings **Enabled** checkbox
7. Click **Apply**.
8. Click **Reboot Machine** when the “Setting have been changed.” page appears to restart the device and apply the changes. Confirm the reboot on the pop-up confirmation that appears.

All Plug-ins: Deactivating Plug-ins

Before Plug-ins can be updated old versions must be deactivated

1. On the device webpage, select **Log In**, and then log in to the device as Admin.

For Xerox® Color C60/70® Series

2. Navigate to [Properties] - [Security] - [Plug-in / Custom Services Settings] – [Embedded Plug-ins]

For Xerox® WorkCentre® 53xx Series

2. Navigate to [Properties] - [Security] - [Plug-in Settings]
3. Select the **Embedded Plug-ins** sub-page.
4. Select **Plug-in Settings**. Deactivate each plug-in:
 - o Select the plug-in.
 - o Select **Stop**.
5. Reboot and return to the **Plug-in Settings** page by following steps 1-3
 - o To reboot, go to the **Home** page, and then click the **Support** quick link, and then click **Restart Device**.

Authentication Plug-ins

FOR A TYPICAL INSTALLATION

1. Extract all files from the ZIP file to a convenient location on your computer.
2. Go to the **Plug-in Settings** page, as described under “All Plug-ins: Activating the Plug-in Feature.”
3. Select **List of Embedded Plug-in** option under **Plug-in settings**.
 - o If the desired plug-in is not on the **Plug-in Settings** page:
 - V. Click **Upload**
 - VI. Click **Choose File** and navigate to the location where you previously extracted the .zip file.
 - VII. Select the plug-in file using the normal file selection process and then **Upload**.
 - VIII. Based on need, repeat steps 1-3 for each plug-in.
 - a. Please note that you should always update to the latest available version of a Plug-in if one is made available.
 - o If the desired plug-in is on the **Plug-in Settings** page:
 - vi. Deactivate the plugin as described under “All Plug-ins: Deactivating Plug-ins.”
 - vii. Select the deactivated Plug-in
 - viii. Click **Upgrade**
 - ix. Click **Choose File** and navigate to the location where you previously extracted the .zip file.
 - x. Select the plug-in file using the normal file selection process and then **Upload**
12. Connect your USB Smart Card reader device at this time.
13. Reboot the device to activate the plug-ins.
 - o To reboot, navigate to **Status** tab in device webpage and click **Reboot Device**.
14. When the system is back online return to the **List of Embedded Plug-ins** page and ensure that the plug-ins are **Activated**

(See the “Setting Up Authentication for a USB SmartCard Reader System” for Xerox® WorkCentre® WC53xx, C60/70 Printer in the System Administrator Guide” which can be found on www.support.xerox.com).

Plug-in Overview

On VersaLink® Series products, System Authentication is set via the **Login Methods** under **Permissions > Login/Logout Settings**. The available **Login Methods** are: **Simple, Local, Network, Convenience, and Smart Card**. With all these **Login Methods**, device users may type in their credentials at the VersaLink® UI to log in – with **Convenience** and **Smart Card Authentication**, the administrator may also allow the user's credentials to be read from a proximity, magnetic stripe, or smart card (via an attached USB card reader) and verified via an authentication server.

VersaLink® Series products include an extensible plug-in feature to leverage USB card readers in this way. Once an authentication server is set up to communicate with the device, and selected services are locked at the device's UI, access to those “locked” services will be granted only to walk up users who are able to authenticate at the device's UI. An additional benefit of configuring the VersaLink® in this way is that authentication solution providers typically also have card-based pull printing and accounting functionality.

Xerox® releases new and updated plug-ins via plug-in package ZIP files containing all the general plug-ins currently supported by Xerox. This document is a combination of user guide, Product Enhancement Document, README, and release note for the plug-in package ZIP file. It explains how to enable the plug-in feature, and how to configure plug-ins based on the desired **Login Method**. It also contains information about the latest release of the plug-in package, as well as historical information about prior releases.

- “Plug-in Release Details” lists the plug-ins in the current release – and maps the plug-in names to filenames in the plug-in package ZIP file

“

Plug-in filename contains the letters D, P or V preceding the version number. Each letter indicates the products that the plugin supports.

- *D = DMP products (WC 53xx Models, XC60/70 Models, D-Series, Versant 180)*
- *P = PrimeLink® products (PL C90xx, B91xx)*
- *V = VersaLink® products (All VersaLink Models)*
- “Fixes/Features new in this release” describes the features implemented via the plug-ins in the current release, with summary information in the “**Error! Reference source not found.**” section, with more complete information in the “**Error! Reference source not found.**” section
- “Fixes / Features from previous releases” shows historical information
- “VersaLink Installation Instructions” describes how to install the required plug-in(s) on the VersaLink®
- Under “Plug-in Overview”
 - The “Convenience Authentication” and “Smart Card Authentication” subsections describe the technologies that can be used with various styles of System Authentication
 - “Required Plug-Ins” shows which plug-ins are required for each style of System Authentication

Generally, once the System Administrator determines what style of System Authentication to use, the table in “Required Plug-Ins” can be used to determine which plug-ins are required, and then the table in the “Plug-in Release Details” section can be used to determine the names of the files containing those plug-ins, and then the “VersaLink Installation Instructions” can be used to set up the plug-ins.

Although the plug-in setup is very similar between the Convenience Authentication and Smart Card Authentication, VersaLink® devices distinguish between the two – and so does this document.

Convenience Authentication

Convenience Authentication card readers are proximity (RFID) card readers – or possibly magnetic stripe card readers – that read Card Serial Numbers (CSNs). Convenience Authentication card readers must be set up as a keyboard wedge, with a trailing carriage return. Only USB card readers that communicate using the Human Interface Device (HID) keyboard emulation mode are supported.

Enabling a USB connected card reader in combination with Xerox Convenience Authentication requires installing and activating a plug-in – the plug-in does not depend on the type of card that will be used.

NOTE: Not all readers are supported on all devices – for details, or to request support for a specific reader, please contact your local Xerox Representative.

NOTE: When selecting a card reader, ensure the card reader is compatible with the card type.

Smart Card Authentication

Smart Card Authentication card readers activate integrated circuits embedded within smart cards to read from secure memory segments on the card. Smart card memory contains the user's "Identity Certificate" along with their "public and private key," enabling the VersaLink® to perform a Kerberos authentication to the Windows Active Domain Controller which originally issued the Identity Certificate. Smart cards can also be used to encrypt and sign emails generated for the user by the VersaLink®. Smart cards are usually inserted into the reader to provide power to the circuit.

NOTE: Contactless smart cards are currently not supported.

Enabling a USB connected card reader in combination with Xerox Smart Card Authentication requires installing and activating a plug-in specific to the type of Smart Card that will be used. Supported Smart Card types include:

- CAC/PIV (Common Access Card, Personal Identity Verification, and Rijkspas smart cards)
- SIPRNet (Secret Internet Protocol Router Network smart cards)
- GemNet (Thales / Gemalto ID Prime smart cards designed to work with .NET applications)

NOTE: Not all readers are supported on all devices – for details, or to request support for a specific reader, please contact your local Xerox Representative.

NOTE: When selecting a smart card reader, ensure the smart card reader is compatible with the smart card type.

Required Plug-Ins

Typically, Xerox-provided plug-ins are used to enable USB card readers – but authentication solution providers may require use of their own plug-in(s).

With the Xerox-provided plug-ins, generally, there is a plug-in to support the card reader and there is a separate plug-in to support each type of card (a single device can authenticate using only one type of card at a given time). The following table shows which Xerox-provided plug-ins must be used for each combination of Login Method, type of card, and authentication solution (aka style of System Authentication):

System Authentication	Plug-in Feature must be enabled?	Plug-in(s) must be activated?	Plug-in Name(s)
Simple, Local, Network	No	No	N/A (credentials must be typed in by users – cards are not allowed)
Convenience Authentication – typical	Yes	Yes (1 plug-in)	Xerox USB Card Reader – the Convenience Authentication USB Card Reader Plug-in
Convenience Authentication – with certain authentication solution providers with TWN4 Smart Card Readers	Yes	Yes (1 plug-in)	TWN4 Card Reader Service – do not attempt to use this plug-in unless specifically directed to do so by the authentication solution provider
Smart Card Authentication – with CAC/PIV cards	Yes	Yes (2 plug-ins)	CCID Terminal Plugin – the CCID Terminal Service USB Smart Card Reader Plug-in Modernized CAC Smartcard Service Plugin – the CAC/PIV Smart Card Plug-in
Smart Card Authentication – with SIPRNet cards	Yes	Yes (2 plug-ins)	CCID Terminal Plugin – the CCID Terminal Service USB Card Reader Plug-in Please see the SIPRNet option package for the name of the SIPRNet Smart Card Plug-in

System Authentication	Plug-in Feature must be enabled?	Plug-in(s) must be activated?	Plug-in Name(s)
Smart Card Authentication – with GemNet cards	Yes	Yes (2 plug-ins)	CCID Terminal Plugin – the CCID Terminal Service USB Card Reader Plugin GemNetSmartCardService – the Gemalto .NET Smart Card Plug-in

See the “Plug-in Release Details” section for the filenames in the plug-in package ZIP file associated with the above Plug-in Names.

As mentioned above, certain authentication solution providers may require installation of their own plug-ins (e.g., **Equitrac XCP Provider** from Kofax® / Nuance®): check with the authentication solution provider to determine if their plug-ins must be used and to obtain such plug-ins. Xerox® does not distribute 3rd party plug-ins.

Not Covered in this Document

This document does not cover mounting the card reader on the device – please contact your local Xerox Representative or Xerox Customized Applications Service for assistance.

This document does not cover installation or configuration of the authentication server, or installation of the authentication software on the VersaLink®. Please contact the authentication solution provider for assistance.

This document does not cover debugging – please contact your local Xerox Representative, card reader manufacturer, or authentication solution provider for assistance.