

Phaser 540 Plus

The Phaser® 540 Plus Color Printer is Tektronix' second generation color laser printer. This addendum supplements the *Phaser 540 Drivers and Utilities Printing Reference* (070-9009-00).

In most cases, the information contained in the *Phaser 540 Drivers and Utilities Printing Reference* is applicable for use with Phaser 540 Plus color printers. Phaser 540 Plus printer driver differences are detailed in this addendum.

The Phaser 540 Plus drivers and utilities provide support for the following new printer features:

- Legal-size printing capability
- A new Presentation print-quality mode

General differences

- The default printer name that appears in dialog boxes and windows changes to Phaser 540 Plus.
- A Presentation print-quality mode has been added for creating presentation materials such as overhead transparencies and presentation handouts with a color sweep in the background. The Presentation print-quality mode appears as a front panel selection, a driver selection, and a downloadable utility.

Macintosh utility	<i>Presentation Quality</i>
Macintosh QuickDraw GX Printer utility	<i>Use Presentation Quality</i>
PC Windows utility	<i>PRESENTN.PS</i>

- The default print-quality mode for the printer changes to Fast. The default print-quality mode for the drivers remains Standard. This provides faster throughput when selecting Fast mode from the driver.
- When you select a print-quality mode, printer output is dependent on the amount of installed memory and the paper size. For example, if the printer has 20 Mbytes of memory and you select Enhanced for Letter-size paper, the printer uses the Standard print-quality mode. Refer to the following table for details.

Installed memory	Print-quality selection	Letter/A4-size paper	Legal-size paper
Standard 20 Mbytes	Fast	Fast	Fast
	Standard	Standard	<i>Fast</i>
	Presentation	Presentation	<i>Fast</i>
	Enhanced	<i>Standard</i>	<i>Fast</i>
One 16-Mbyte SIMM (36 Mbytes total)	Fast	As selected in the driver	Fast
	Standard		Standard
	Presentation		Presentation
	Enhanced		<i>Standard</i>
Two 16-Mbyte SIMMs (52 Mbytes total)	As selected in the driver	As selected in the driver	As selected in the driver

Diskette contents changes

Some seldom-used and obsoleted files have been removed from the Phaser 540 Plus driver and utilities diskettes.

- Version 3.0 PPD and PDX files have been removed from the Macintosh Driver and Printer Utilities diskette and the Windows 3.1 Driver and Printer Utilities diskette. If needed, you can obtain copies of these files from the Tektronix Bulletin Board Service (BBS).
- WPD files have been removed from the Windows 3.1 Driver and Printer Utilities diskette. These files are used to update the standard Microsoft Windows PostScript driver in your system folder. You can obtain copies of these files from the Tektronix Bulletin Board Service (BBS).
- The *AppleTalk Installer* on AppleTalk Installer for the Macintosh diskette is a newer version than described in the manual. See the README file for details.
- The *Set EtherTalk Zone* utility on the Macintosh Driver and Printer Utilities diskette and *ETHRZONE.PS* utility on the Windows 3.1 Driver and Printer Utilities diskette have been removed. These utilities are now included on the Network Utilities diskette shipped with PhaserShare™ cards.
- Two new downloadable utilities are included on Phaser 540 Plus drivers and utilities diskettes to control job pipelining. The default setting is Pipelining Off.

Macintosh utility	Pipelining On Pipelining Off
Macintosh QuickDraw GX Printer utility	Enable Job Pipelining Disable Job Pipelining
PC Windows utility	PIPE_ON.PS PIPE_OFF.PS

File/directory name changes

Macintosh changes

- Macintosh: The Print and Page Setup dialog box names change to Phaser 540 Plus.
- Compressed archive files on the Macintosh Driver and Printer Utilities diskette change to: *Phaser 540P Apps.sea*, *Phaser 540P Samplers.sea*, and *Phaser 540P Utilities.sea*
- The PostScript Printer Description (PPD) file used with the LaserWriter 8.x printer driver, Aldus PageMaker 5.0 and Aldus Freehand 4.0 changes to *TKP540P1.PPD*.
- The QuarkExpress printer description file changes to *Phaser 540P.PDF*.
- The printer driver used with QuickDraw GX applications changes to Phaser 540 Plus GX.

PC changes

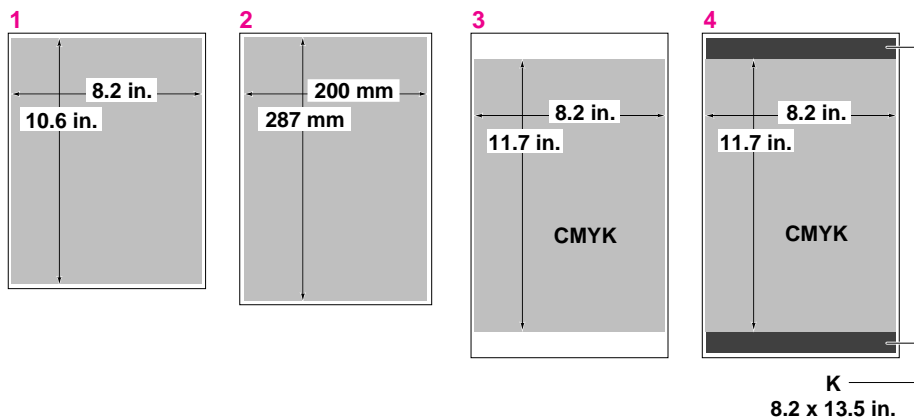
- Windows: The Printer Setup dialog box name changes to Phaser 540 Plus.
- The Utility file directory on the Windows 3.1 Driver and Printer Utilities diskette changes to *PHSR540P*.
- The PostScript Printer Description (PPD) file used with Aldus PageMaker 5.0 and Aldus Freehand 4.0 changes to *TKP540P1.PPD*.
- The Tek Phaser 540 Plus (TekColor) printer name now appears in the Add Unlisted or Updated Printer window.
- The QuarkExpress printer description file changes to *TKP540P1.PDF*.

Legal-size printing

The Phaser 540 Plus drivers contain new Legal and Legal Short-size driver selections. The printable area used by an application is determined by selecting Legal or Legal Short in the driver (the physical page size is the same for both; only the print area is different).

- **Legal Short**
Prints a full-color image (8.2 x 11.7 in.) on legal-size paper with top and bottom margins of 1.15 in.
- **Legal**
Prints a full-color image area the same as Legal Short, but can also print monochrome with top and bottom margins of .23 in.

Media	Page size	Print area	Margins		
			Top	Bottom	Sides
1. A/Letter (U.S.)	8.5 x 11 in.	8.2 x 10.6 in.	.22 in.	.18 in.	.15 in.
2. A4 (Metric)	210 x 297 mm	200 x 287 mm	5 mm	5 mm	5 mm
3. Legal Short (U.S.)	8.5 x 14 in.	8.2 x 11.7 in. (CMYK)	1.15 in.	1.15 in.	.15 in.
4. Legal (U.S.)	8.5 x 14 in.	Color (CMYK) 8.2 x 11.7 in.	1.15 in.	1.15 in.	.15 in.
		Black (K) 8.2 x 13.5 in.	.23 in.	.23 in.	.15 in.



9008-102

Legal Short Driver Selection

The Legal Short driver selection is the simplest driver choice for printing a legal-size page. Applications that use the page margin information provided by the Legal Short driver automatically limit the print area to the center 11.7 inches of the page. Refer to the previous illustration for complete print area dimensions.

Legal Driver Selection

The Legal driver selection is useful when you want to place black (only) header or footer information *outside* the center 11.7-inch area of a legal-size page. Refer to the previous illustration for complete print area dimensions.

With this driver selection, the application uses a print area of 8.2 x 13.5 inches. Full-color information is printed inside the center 11.7 inches of the page. Outside the center 11.7-inch area, *only* the black (K) portion of the image, text, or graphic data is printed.

Printing Reference

Tektronix

Phaser™ 540 Drivers and Utilities

First printing **November 1994**
070-9009-00

Copyright © 1994 by Tektronix, Inc., Wilsonville, Oregon. Printed in the United States of America. All rights reserved. Contents of this publication may not be reproduced in any form without permission of Tektronix, Inc.

This instrument, in whole or in part, may be protected by one or more U.S. or foreign patents or patent applications. Information provided upon request from Tektronix, Inc., P.O. Box 1000, Wilsonville, Oregon 97070-1000.

If acquired subject to FAR or DFARS, the following shall apply:

- Unpublished — rights reserved under the copyright laws of the United States.
- Restricted Rights Legend — Use, duplication or disclosure by the government is subject to restrictions as set forth in subparagraph (c) (1) (ii) of the Rights in Technical Data and Computer Software at DFARS 252.227-7013, or in subparagraph (c) (2) of the Commercial Computer Software – Restricted Rights clause at FAR 52.227-19, as applicable. Tektronix, Inc., P.O. Box 1000, Wilsonville, Oregon 97070-1000.

Tektronix[®] is a registered trademark of Tektronix, Inc. TekColor[™] are trademarks of Tektronix, Inc. Phaser[™] is a trademark of Tektronix, Inc. for color printers and related products.

Adobe[™] and PostScript[™] are trademarks of Adobe Systems, Incorporated which may be registered in certain jurisdictions.

Adobe Brilliant[™] Screens technology is a trademark of Adobe Systems Incorporated or its subsidiaries and may be registered in certain jurisdictions.

Times[™], Helvetica[™] and Palatino[™] are trademarks of Linotype-Hell AG and/or its subsidiaries.

ITC Avant Garde Gothic, ITC Bookman, ITC Zapf Chancery, and ITC Zapf Dingbats are registered trademarks of International typeface Corporation.

UNIX is a trademark of AT&T Bell Laboratories.

Windows is a trademark of Microsoft Corporation.

Stuffit Deluxe is a trademark of Aladdin Systems, Inc. and Raymond Lau.

Novell[®] Netware[®] is a registered trademark of Novell, Inc.

PCL[®]5 is a registered trademark of Hewlett-Packard Corporation.

PANTONE Colors generated by the Phaser 540 Color Printer are four-color process simulations and may not match PANTONE-identified solid color standards. Use current PANTONE Color Reference Manuals for accurate colors.

PANTONE Color simulations are only obtainable on these products when driven by qualified Pantone-licensed software packages. Contact Pantone, Inc. for a current list of qualified licensees.

* Pantone, Inc.'s check-standard trademark for color reproduction and color reproduction materials.
Pantone, Inc. 1988

Other marks are trademarks or registered trademarks of the companies with which they are associated.

Contents

1 Before You Begin

Using the printer's features 1-2

Checking the diskettes 1-4

2 Printing From a Macintosh

Using a Tektronix printer driver for the Macintosh 2-1

System requirements 2-2

Installing the driver 2-2

Using the driver's options 2-4

Using the LaserWriter 8.x printer driver 2-7

Using the Macintosh utility files 2-10

Decompressing the Macintosh utility files 2-11

Downloading files to the printer 2-12

Changing the printer's name 2-15

Printing from an application 2-16

Printer description files for Aldus, Adobe, and other applications 2-18

Printer description file for QuarkXPress 2-20

PANTONE Color template for Adobe Illustrator 2-21

PANTONE Color library files for Aldus applications 2-22

3 Printing From a PC

Using the Tektronix printer driver for Windows 3-1

System requirements 3-1

Accessing on-line help 3-2

Do you already have Tektronix printers installed? 3-2

Installing the driver 3-3

Configuring the driver 3-5

Using the driver's options 3-9

Installing the Tektronix driver on a network 3-12

Updating the standard Microsoft Windows PostScript driver 3-14

Updating a Windows NT PostScript driver 3-16

Printing from DOS 3-19

- Using the PC utility files 3-20
 - Downloading files from DOS 3-20
 - Downloading files from Windows 3-21
 - Changing the printer's name 3-23
 - Adding Control-D characters to PC files 3-25
- Printing from an application 3-26
 - Printer description files for Aldus, Adobe, and other applications 3-27
 - Printer description file for QuarkXPress 3-28
 - PANTONE Color library file for Adobe Illustrator 3-29
 - PANTONE Color library file for Aldus applications 3-30
 - PANTONE Color palette file for CorelDRAW! 3-32

4 Printing from a UNIX Workstation

- Printing information 4-1
- Faster printing with Tektronix Phaser Print software 4-2
- Locating workstation procedures 4-3
- Using the utility files 4-4
 - About Control-D characters 4-4
- Mounting the PC/DOS diskette on a workstation 4-6
 - SGI IRIX versions 4.0.x and 5 4-6
 - Sun running Solaris 2.3 4-7
- Obtaining the PC utility files 4-8

5 Selecting Media and Image Options

- Selecting media sizes 5-2
- Selecting media trays 5-5
- Printing manual feed 5-8
- Selecting print quality 5-10
- Selecting image orientation 5-12
- Choosing the output (stack) order 5-14

6 Using Color

- TekColor Dynamic Correction 6-1
 - Working with color 6-2
- Selecting color corrections 6-4
 - Color corrections table 6-6
 - Turning off all color corrections 6-8
 - Printing a truer blue 6-8
 - Simulating display colors 6-8
 - Closely match printing press colors 6-9
 - Printing in gray scale 6-10
 - Using the printer's current color defaults 6-10
 - Using simple color conversions 6-11
- Printing the color sampler charts 6-12
 - Before you print the CMYK, RGB, and HSB color charts 6-14
 - Printing the CMYK, RGB, and HSB color charts 6-15
 - Printing the PANTONE Color chart 6-17

7 Using Fonts

- Macintosh fonts 7-1
 - Using Macintosh screen fonts 7-1
 - Downloading fonts to the printer from a Macintosh 7-3
 - Printing a font sampler from a Macintosh 7-4
- PC fonts 7-5
 - Using fonts with Windows 7-5
 - Downloading fonts to the printer from a PC 7-6
 - Printing a font sampler from a PC 7-6

8 Using the Phaser 540 GX Driver

- System requirements 8-1
- Installing the QuickDraw GX Phaser 540 printer driver 8-2
- Creating a desktop printer 8-3
- Using a desktop printer 8-5
 - Setting up unique desktop printers 8-5
 - Printing with a desktop printer 8-6
- Using the Printing menu 8-7
- About shared printers 8-14
 - Setting up a shared printer 8-14
 - Using a shared printer 8-15
- Printing from QuickDraw GX-aware applications 8-16
 - Using the Page Setup command 8-16
 - Using the Print command 8-18
- Printing from non-QuickDraw GX-aware applications 8-21
 - Changing a desktop printer's default selections 8-21
 - Disabling QuickDraw GX 8-22
- Viewing printer status 8-23

9 Troubleshooting

- Getting help 9-1
 - Using the Tektronix Bulletin Board Service 9-1
 - Reaching the Technical Support staff 9-1
 - Using the automated fax systems 9-2
 - Using the Internet to download Tektronix files 9-6
- Solving PostScript printing problems 9-7
 - PostScript printing errors 9-7
 - Random PostScript errors 9-8
 - Using a PostScript error handler 9-9
- Improving print speed 9-11

- If your file doesn't print 9-12
 - General things to check for 9-12
 - Check the printer's language mode 9-14
 - Fixing timeout problems in Windows 9-15
- Correcting printing problems 9-16
 - Printed colors are not what you expected 9-16
 - Use Tektronix halftone screens 9-17
 - Blue colors look too purple 9-18
 - Selecting page sizes in Windows applications 9-19
- Sharing the printer on a network 9-20
 - Driver, utility file, and front panel interactions 9-20
 - LaserWriter Utility does not work 9-21
 - Programs crashing on a network (Macintosh) 9-21
- Resetting the printer 9-22
- Can't open the READ ME files on the Macintosh diskettes 9-24
- If you have problems using the media trays 9-24

A **Modifying Printer Operations**

- Enabling and disabling the startup page A-2
- Printing a configuration page A-4
- Setting the printer's EtherTalk zone A-6
- Enabling and disabling front panel menus A-9
- Configuring a printer's serial port for a PC A-11
- Enabling and disabling bi-directional status reporting A-14

B **Using SCSI Hard Disks**

- Selecting a SCSI hard disk B-1
- Formatting a SCSI hard disk B-2
- Initializing a formatted SCSI hard disk B-4
- Enabling and disabling SysStart Job execution B-5

C Using Different Printer Language Modes

Setting PostScript and HP-GL job and wait timeouts C-2

Changing printer language modes C-4

 Printing PostScript files C-5

 Printing HP-GL files C-5

 Printing PCL5 files C-5

Testing printer language mode changes C-6

 HP-GL mode C-6

 PostScript mode C-6

Setting default HP-GL pen colors C-7

Index

Before You Begin

The Phaser 540 color printer lets you easily add color to your documents or presentations. The drivers and utilities on the diskettes shipped with your printer are designed to help you get the best printed results.

There are different ways to use the printer's features. Printer drivers are available for Macintosh and Windows applications, and downloadable utility files let you make selections and modify the printer's behavior. Most of the features in the drivers and utility files are also available from the printer's front panel. Refer to the tables on the following pages for details on the different ways to use the printer.

Note *If you are using a workstation and cannot use the DOS diskette, refer to "Obtaining the PC utility files" on page 4-8 for instructions on obtaining the utility files from other sources.*

Using the printer's features

	Tektronix printer drivers	Downloadable utility files
When to use	<ul style="list-style-type: none"> ■ Macintosh driver: Use with most Macintosh applications. ■ Windows driver: Use with most Windows applications. 	<ul style="list-style-type: none"> ■ Use to modify the printer, such as changing the printer's name, or downloading the error handler. ■ Print the color and font sampler charts. ■ For use with applications/platforms that don't use the Tektronix drivers. ■ For selecting features not available in the Tektronix drivers. ■ When you don't want to use the printer's front panel.
Options/Features	<p>Driver selections override utility file and front panel selections for prints made from the driver.</p> <ul style="list-style-type: none"> ■ Select media size (see page 5-2). ■ Select media trays (see page 5-5). ■ Select print quality (see page 5-10). ■ Select the output direction: face up or face down (see page 5-14). ■ Select TekColor color corrections (see page 6-4). 	<p>Many utility file selections affect all users.</p> <ul style="list-style-type: none"> ■ Print a configuration page (see page A-4). ■ Select media trays (see page 5-5). ■ Select print quality (see page 5-10). ■ Select TekColor color corrections (see page 6-4). ■ Reset the printer (see page 9-23). ■ Use the Tektronix error handler (see page 9-9). ■ Format and initialize a SCSI hard disk (see page B-2 and page B-4). ■ Control SysStart jobs (see page B-5). ■ Change and test printer language modes (see page C-4 and page C-6). ■ Add or delete Control-D characters (see page 3-33).
Where to find	<ul style="list-style-type: none"> ■ Macintosh driver: Located on the <i>Macintosh Driver and Printer Utilities</i> diskette (see page 2-3 for installation instructions). ■ Windows driver: Located on the <i>Windows 3.1 Driver and Printer Utilities</i> diskette (see page 3-4 for installation instructions). 	<ul style="list-style-type: none"> ■ Macintosh utility files: Located on the <i>Macintosh Driver and Printer Utilities</i> diskette (see page 2-12 for instructions on decompressing and using the files). ■ PC utility files: Located on the <i>Windows 3.1 Driver and Printer Utilities</i> diskette (see page 3-26 for instructions on using the files).

Printer's front panel

When to use

- For use with applications/platforms that don't use the Tektronix drivers.
- For selecting features not available in the Tektronix drivers.
- For selecting a color adjustment when printing the color sampler charts.

Options/Features

Front panel selections affect all prints, except prints made from a Tektronix printer driver.

- Print help pages.
- Obtain system counts.
- Select TekColor color corrections.
- Select print quality.
- Select a language, such as English or Español.
- Change printer defaults.
- Change serial port settings.
- Adjust network settings.

Where to find

Printer's front panel: Use the arrow keys and **Menu** button to use menus. Refer to the *Phaser 540 Color Printer User Manual* for instructions.

Checking the diskettes

The printer is shipped with the following diskettes. Refer to the table below to locate information on the contents of a specific folder or directory.

Diskette	Folder/Directory	Contents	Where to find information
<i>Macintosh Driver and Printer Utilities</i>	Top (root) level	Contains the printer drivers.	page 2-1
	<i>Phaser 540 Apps.sea*</i>	Contains printer description files for use with specific applications.	page 2-20
	<i>Phaser 540 Samplers.sea*</i>	Contains files that print color sampler charts and a font sampler.	page 6-12 and page 7-4
	<i>Phaser 540 Utilities.sea*</i>	Contains utility files for use with the printer.	Chapter 2 Chapter 5 Chapter 6 Appendix A Appendix B Appendix C
	<i>Phaser Screen Fonts.sea**</i>	Contains screen fonts to match the printer's fonts.	page 7-1
<i>AppleTalk Installer (for the Macintosh)</i>	Top (root) level	Contains files for updating AppleTalk software.	page 9-8 and page 9-22
<i>Windows 3.1 Driver and Printer Utilities</i>	Top (root) level	Contains the files for installing the Tektronix Windows 3.1 driver.	page 3-4
	<i>WPD</i>	Contains files for updating the standard Microsoft Windows PostScript driver for use with Tektronix printers.	page 3-18
	<i>APPLSPEC</i>	Contains printer description files for use with specific applications.	page 3-35
	<i>PHSR540</i>	Contains utility files for use with the printer.	Chapter 3 Chapter 4 Chapter 5 Chapter 6 Appendix A Appendix B Appendix C
	<i>SAMPLERS</i>	Contains files that print color sampler charts and a font sampler.	page 6-12 and page 7-6

* These are compressed archive files; refer to page 2-12 for decompressing instructions.

** This is a compressed archive file; refer to page 7-2 for decompressing instructions.

Printing From a Macintosh

Using a Tektronix printer driver for the Macintosh

The Macintosh Driver and Printer Utilities diskette includes two Macintosh printer drivers that allow you to select page sizes, media trays, print quality, and TekColor color corrections for a Phaser 540 printer.

Phaser 540 driver

- The Phaser 540 driver is a Tektronix-modified version of Apple's LaserWriter 7.1.2 printer driver.
- Use the Phaser 540 driver if you are using System Software 6.0.7, or 7.0 and later.
- If you are using System Software 7.5 and QuickDraw GX, you *must* disable QuickDraw GX *before* using this driver; the Phaser 540 driver does not work with QuickDraw GX.
- The Phaser 540 driver is described in this chapter.

Phaser 540 GX driver

- The Phaser 540 GX driver is a Tektronix driver for QuickDraw GX.
- Use the Phaser 540 GX driver if you are using System Software 7.5 and QuickDraw GX.
- The Phaser 540 GX driver works with QuickDraw GX applications and with non-QuickDraw GX applications.
- The Phaser 540 GX driver is described in Chapter 8, "Using the Phaser 540 GX Driver."

System requirements

Note *You must have an optional Phaser Share Card installed in the printer before installing the driver.*

The Phaser 540 printer driver for the Macintosh requires the following hardware and software:

- An Apple Macintosh II computer (or later)
- At least 4 Mbytes of memory
- System Software version 6.0.7, or 7.0 and higher

Installing the driver

If the printer is shared on a network, install the same version of the Tektronix driver on all Macintosh computers connected to the network.

1. Make sure your Macintosh is powered up with System Software version 6.0.7, or 7.0 or higher, installed.
2. Insert the Macintosh Driver and Printer Utilities diskette into the disk drive.
3. Drag the Phaser 540 driver icon from the diskette to the closed *System Folder* icon on your Macintosh hard disk.
 - System 7.0 and higher, at the alert message, click OK to automatically install the driver in the *Extensions* folder.
 - System 6.0.7, the driver is installed in the *System Folder*.
4. If you are using system 6.0.7, you need to install two files in the *Old System Items* folder:
 - *Backgrounder V1.3*
 - *PrintMonitor V7.0*

Drag these files to the closed System Folder icon on your Macintosh hard disk.

5. If you installed the additional software in Step 4, you need to restart your Macintosh to activate that software.
6. Store the printer driver diskette in a safe place.
7. If you want to rename the printer, see page 2-18 for instructions.

Selecting the printer in the Chooser

1. Select Chooser from the Apple menu.
2. Click the Phaser 540 printer driver icon located on the left-hand side of the Chooser.

A list appears with the printers you have connected to your Macintosh, or printers that are available on a network. (If the printer driver icon does not appear, Restart your Macintosh, and repeat the printer driver installation procedure; also check the cable connections on your computer and printer.)

3. Click on the Tektronix Phaser 540 printer you want to print to. The list of Tektronix printers is located on the right side of the Chooser.
4. Close the Chooser by clicking its close box.

Using the driver's options

Use the Page Setup, Print, and TekColor Options dialog boxes to select printing options. Refer to other chapters in this manual for instructions on performing common tasks with the driver.

Applications that use their own drivers

Some Macintosh applications, such as Aldus PageMaker 5.x, do not recognize settings made using the Tektronix printer driver. For PageMaker 5.x, use the LaserWriter 8.x printer driver configured with the version 4.x TKPH5401.PPD printer description file (see “Using the LaserWriter 8.x printer driver” on page 2-8 for details). The best way to obtain the TekColor color corrections with this configuration is to use one of the following:

- Color correction utility files — Refer to “Selecting color corrections” on page 6-7 for instructions.
- Printer's front panel — Refer to the *Phaser 540 Color Printer User Manual* for instructions on using the printer's front panel.

Extensions to the Print dialog box

Some applications add their own extensions to the Print dialog box. Refer to the application's documentation for information on extra options not described in this manual.

Making selections in the Page Setup dialog box

Choose Page Setup from the File menu to open the Page Setup dialog box. Make printer selections in the Page Setup dialog box as desired. Most options are standard LaserWriter driver options.

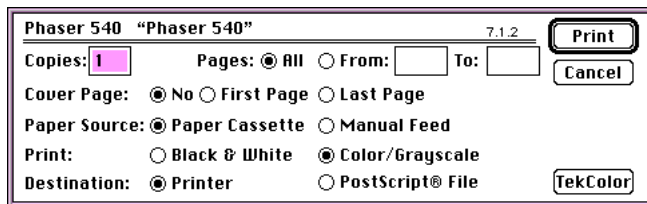
When selecting a paper size, use the pop-up menu. Refer to the table on page 5-2 for a list of paper sizes and image areas for your printer.



Making selections in the Print dialog box

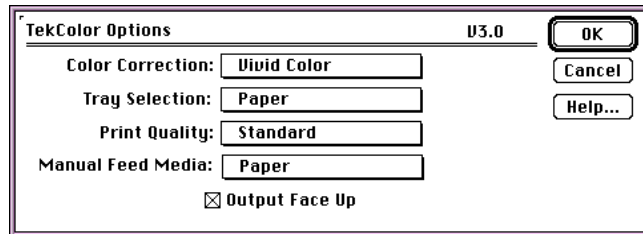
Choose Print from the File menu to open the Print dialog box. Make printer selections in the Print dialog box as desired. Most options are standard LaserWriter driver options.

Click the TekColor button to see the TekColor Options dialog box.



Making selections in the TekColor Options dialog box

Click the TekColor button in the Print dialog box to open the TekColor Options dialog box. Make printer selections in the fields described in the following table. Refer to Chapter 5, “Selecting Media and Image Options,” and Chapter 6, “Using Color,” for details on these options.



TekColor Options dialog box options

Dialog box options	Option description
Color Correction	Select one of the following options: <ul style="list-style-type: none"> ■ None ■ Vivid Color ■ Simulate Display ■ SWOP Press ■ Euroscale Press ■ Commercial Press ■ Monochrome ■ Use Printer Setting
Tray Selection	Select one of the following options when Paper Cassette is selected as the Paper Source in the Print dialog box: <ul style="list-style-type: none"> ■ Upper ■ Middle ■ Lower ■ Paper ■ Transparency
Print Quality	Select one of the following options: <ul style="list-style-type: none"> ■ Fast ■ Standard ■ Enhanced
Manual Feed Media	Select one of the following options when Manual Feed is selected as the Paper Source in the Print dialog box: <ul style="list-style-type: none"> ■ Paper ■ Transparency
Output Face Up	Check this box to stack prints face up in the output tray. Uncheck this box to stack prints face down in the output tray.

Using the LaserWriter 8.x printer driver

You can use Apple's LaserWriter driver version 8.x with a Phaser 540 printer. Some applications, such as Aldus PageMaker 5.x, use the LaserWriter 8.x driver instead of the Tektronix driver.

Installing the LaserWriter 8.x driver

Note *During installation, the LaserWriter 8.x driver leaves other versions of the LaserWriter driver intact so that this driver can co-exist with the Tektronix driver.*

Refer to the LaserWriter driver's documentation, *LaserWriter 8.x Update Guide*, for instructions on installing the driver.

Using the LaserWriter 8.x driver with a Phaser 540

The LaserWriter 8.x driver uses printer-specific 4.x PPDs (PostScript Printer Description files) for information on a printer's page sizes, printing options, and media type options. To use the LaserWriter 8.x driver with a Phaser 540 printer, perform the following steps. If the printer is busy, it may take some time to complete this procedure; you may want to perform it when the printer is idle. You only have to configure the printer once.

1. The *Phaser 540 Apps.sea* archive file on the Macintosh Driver and Printer Utilities diskette contains printer description files for the printer. Follow the instructions on page 2-12 to decompress these files, then continue with the steps listed below.
2. Locate the *4.x PPDs Folder* in the folder on your hard disk containing decompressed files.

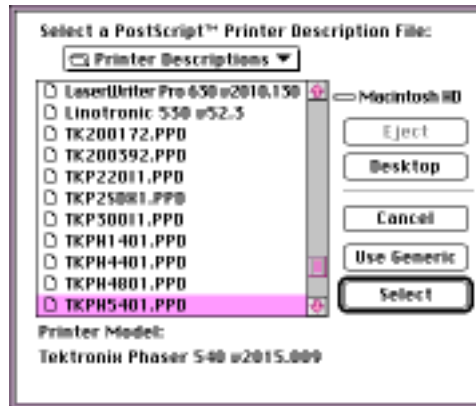
Open the folder and place the *TKPH5401.PPD* file with the other PPDs for the LaserWriter 8.x driver in the *Printer Descriptions* folder, in the *Extensions* folder, inside the *System Folder*.

3. Open the Chooser.
4. Select the LaserWriter 8.x driver icon.

5. Select your printer from the list.
6. From the Chooser, click the Setup button to see a list of options.
7. In the dialog box that appears, click the More Choices button to see the full range of options.

Note Do not use the Auto Setup button; errors can occur with the PPD files. Continue with this procedure to properly set up the driver.

8. Click the Printer Info button, then click the Update info button in the next dialog box.
9. Record the information for PostScript Version and Total Memory Installed; you will need this information later. Click OK.
10. Click the Select PPD button. The *Printer Descriptions* folder in the *Extensions* folder, inside the *System Folder*, appears.



11. Select the *TKPH5401.PPD* file. Make sure that the information under Printer Model matches the printer you have and the PostScript Version information you obtained in Step 9.
12. Click Select.

Note *If the information under Printer Model is not an exact match, use the closest printer name, and call Tektronix Customer Support in the U.S. and Canada at 1-800-835-6100 for the latest PPD file. Outside the U.S. and Canada, contact your local Tektronix reseller. You can also download the latest PPD files from the Tektronix Bulletin Board Service (BBS); see page 9-1 for instructions.*

13. Click Configure. In the field for Memory Configuration under Installable Options, select the amount of memory your printer has installed. Check other options, either Installed or Not Installed, as appropriate.
14. Click OK in two dialog boxes and close the Chooser.
15. Open the Page Setup dialog box to see a pop-up menu with all the printer's supported paper sizes.
16. Open the Print dialog box to select the paper source.
17. In the Print dialog box, click the Options button to open the Print Options dialog box.

Printer-specific TekColor features are listed at bottom of the dialog box. Refer to Chapter 5, "Selecting Media and Image Options," and Chapter 6, "Using Color," for details on these options.

Using the Macintosh utility files

The Macintosh Driver and Printer Utilities diskette contains compressed archive files with .sea extensions. Each compressed file contains a group of files. For example, the *Phaser 540 Utilities.sea* file contains the printer utility files for performing certain tasks, such as resetting the printer and using the error handler. You need to decompress an entire archive file onto your hard disk and then delete the individual files you don't want to use.

- *Phaser 540 Apps.sea* contains the printer description files described on page 2-20.
- *Phaser 540 Samplers.sea* contains the color sampler charts described on page 6-12, and the font sampler described on page 7-4.
- *Phaser 540 Utilities.sea* contains the utility files described in several places in this manual.
- *Phaser Screen Fonts.sea* contains the screen fonts described on page 7-1.

Decompressing the Macintosh utility files

1. Insert the Macintosh Driver and Printer Utilities diskette into your computer's disk drive.
2. Double-click on a compressed file with a .sea extension.
3. At the Self-Extracting Archive dialog box, click Continue.
4. In the dialog box, select the location, such as your hard drive, where you want the decompressed files saved.



5. At the `Install software as:` prompt, you are asked to name the folder where you want the decompressed files saved. Use the default folder name listed in the edit box or type in the desired folder name.
6. Click Save.
7. At the Installation was successful dialog box, click Quit.

The contents of the decompressed file are saved in the folder you specified and are ready for use.

Downloading files to the printer

Note *If you are using System Software 7.5 and QuickDraw GX, you can also download printer utilities from the Tektronix Phaser 540 GX printer driver; refer to page 8-13 for instructions.*

Using the LaserWriter Utility to download files to the printer

The *LaserWriter Utility* is an Apple utility you use on the Macintosh to send PostScript files and fonts to the printer.

LaserWriter Utility version 7.7 is compatible with Apple System Software versions 7.x. If you are using System Software 6.x, check the Tektronix BBS for another version of the *LaserWriter Utility* in the *LW_UTIL.SEA* compressed archive file. See page 9-1 for instructions on using the BBS.



LaserWriter Utility

Note *You cannot use the LaserWriter Utility if the printer is connected to a print server. See your system administrator to temporarily remove the printer from the print server so you can download the necessary files.*

1. Follow the instructions on page 2-12 to decompress the *Phaser 540 Utilities.sea* archive file on the Macintosh Driver and Printer Utilities diskette to a folder on your hard disk.
2. Install a Tektronix driver using the instructions on page 2-3 (Phaser 540 driver) or page 8-2 (Phaser 540 GX driver).

3. Select the appropriate printer in the Chooser.
4. Locate the *LaserWriter Utility* in the folder of decompressed files. You may want to place this utility in a *Utilities* folder, or leave the utility on your desktop if you use it often.
5. Double-click on the LaserWriter Utility icon to start the application.
6. Select Download PostScript File from the Utilities menu.
7. Select the file you want to send to the printer and click Open.
8. At the `Save PostScript output as:` prompt, you are asked to supply a file name for saving printer output. Use the default name given in the edit box or type in a new name. Then click Save to send the file to the printer. (Printer output includes status messages generated by the printer to report conditions such as out of paper.)
9. If no output is returned by the printer, the *LaserWriter Utility* displays a dialog box. Click OK in the box to continue.

If output is returned by the printer, you won't see this dialog box. Check your hard disk for the file created by the utility for the printer's output.

Using the LaserWriter Utility to perform other tasks

In addition to downloading PostScript files and fonts, you can use the *LaserWriter Utility* to perform other specialized tasks.

Task	Where to find details
Changing the printer's name.	page 2-18
Enabling or disabling the printer's startup page.	page A-2
Initializing a formatted SCSI hard disk connected to the printer.	page B-4

All the files in the following table can be downloaded to the printer using the *LaserWriter Utility*:

Downloadable utility files	Where to find details
<ul style="list-style-type: none">■ <i>Fast Quality</i>■ <i>Standard Quality</i>■ <i>Enhanced Quality</i>	Chapter 5
<ul style="list-style-type: none">■ <i>Use Any Tray</i>■ <i>Use Lower Tray</i>■ <i>Use Middle Tray</i>■ <i>Use Upper Tray</i>	Chapter 5
<ul style="list-style-type: none">■ <i>Commercial Press</i>■ <i>Euroscale Press</i>■ <i>SWOP Press</i>■ <i>Vivid Color</i>■ <i>No Color Correction</i>■ <i>Monochrome</i>■ <i>Simulate Display</i>■ <i>Raw CMYK Colors</i>■ <i>Raw RGB Colors</i>	Chapter 6
<ul style="list-style-type: none">■ <i>CMYK Sampler</i>■ <i>RGB Sampler</i>■ <i>HSB Sampler</i>■ <i>PANTONE Tek Phaser 540</i>	Chapter 6
<ul style="list-style-type: none">■ <i>Fonts Sampler</i>	Chapter 7
<ul style="list-style-type: none">■ <i>Reset Printer</i>■ <i>Setscreen Patch</i>■ <i>Tek Error Handler</i>	Chapter 9
<ul style="list-style-type: none">■ <i>Format Printer Disk</i>■ <i>No SysStart Job</i>■ <i>Set SysStart Job</i>	Appendix B
<ul style="list-style-type: none">■ <i>Configuration Page</i>	Appendix A

Changing the printer's name

This procedure explains how to change the printer's name. The printer's name has the following characteristics:

- It prints on the startup and configuration pages.
 - It is used by both LocalTalk and EtherTalk to identify the printer.
 - It appears in the Chooser.
 - It can be up to 31 characters long, and may contain any printable characters except @ (at sign) and : (colon).
 - The default printer name is Phaser 540. If more than one printer has the same name in a given zone, numbers are appended to the names of the printers added later; for example, Phaser 540-1 and Phaser 540-2.
 - A name change is persistent across printer power cycles.
1. If you have not decompressed the *Phaser 540 Utilities.sea* archive file on the Macintosh Driver and Printer Utilities diskette, follow the instructions on page 2-12 to decompress this file.
 2. Select the appropriate printer in the Chooser.
 3. Locate the *LaserWriter Utility* file in the folder on your hard disk containing decompressed utility files.
 4. Double-click on the LaserWriter Utility icon.
 5. Select Name Printer from the Utilities menu. The currently selected printer is listed in the dialog box.
 6. Type the new name in the edit box.
 7. Click the Rename button.
 8. At the confirmation dialog box, click OK.
 9. Open the Chooser to reselect the printer with its new name.

Printing from an application

Note *For hints and tips on printing from a specific application, request a document catalog from HAL or EuroHAL, the Tektronix automated fax systems. Refer to page 9-2 for instructions on using these systems.*

The *Phaser 540 Apps.sea* archive file on the Macintosh Driver and Printer Utilities diskette contains printer description files for the Phaser 540 printer. Follow the instructions on page 2-12 to decompress these files.

These files are required by some applications; *refer to your application's documentation to determine if you need to use one or more of these files.*

You should always use the most current printer description file. To determine the date of the file you are using, do the following:

1. Select (highlight) a file and choose Get Info from the File menu. Make a note of the version date.
2. Check the Tektronix BBS to see if the PPD files you have are the most recent. Refer to page 9-1 for instructions on using the BBS.

A few applications and their corresponding printer description files are listed in the following table. Refer to “Printer description files for Aldus, Adobe, and other applications” on page 2-22 for details about each printer description file.

Note *Most applications that use version 3.0 PPD files also use PDX files.*

Printer Description Files for the Phaser 540

Application and version number	Printer Description File
Aldus PageMaker 4.0 or 4.01	<i>Tek Phaser 540.APD*</i>
Aldus PageMaker 4.2 (use both PPD and PDX)	<i>TKPH5401.PPD (version 3.0)</i> <i>TKPH5401.PDX</i>
Aldus PageMaker 4.2A (use both PPD and PDX)	<i>TKPH5401.PPD (version 3.0)</i> <i>TKPH5401.PDX</i>
Aldus PageMaker 5.0	<i>TKPH5401.PPD (version 4.x)</i>
Aldus FreeHand 2.0	<i>Tek Phaser 540.APD*</i>
Aldus FreeHand 3.0 or 3.1 (use both PPD and PDX)	<i>TKPH5401.PPD (version 3.0)</i> <i>TKPH5401.PDX</i>
Aldus FreeHand 4.0	<i>TKPH5401.PPD (version 4.x)</i>
QuarkXPress 3.11, 3.2, 3.3	<i>Phaser 540.PDF</i>
Canvas 3.0	<i>TKPH5401.PPD (version 3.0)</i>

* An APD file is not shipped with the printer. Check the Tektronix Bulletin Board Service (BBS) for an APD file, or call Tektronix Customer Support; refer to page 9-1 for instructions.

Printer description files for Aldus, Adobe, and other applications

There are 3.0 and 4.x versions of the PPD files; use the version required by your application. Each version is located in a separate folder. However, if you need to check the file's version number (3.0 or 4.x), open the file in a text editor and check the *FormatVersion line near the beginning of the file.

The PPD and PDX files are compressed into the *Phaser 540 Apps.sea* archive file on the Macintosh Driver and Printer Utilities diskette. Follow the instructions on page 2-12 to decompress these files, then continue with the steps that follow for your version of the application. Most applications that use version 3.0 PPD files also use PDX files.

Note Also included on the Macintosh Driver and Printer Utilities diskette are files for use with a Japanese Kanji language version of the printer (*TKP540J1.PPD*, *TKP540J1.PDX*).

Aldus PageMaker 4.2 and 4.2A

Aldus FreeHand 3.0 and 3.1

Canvas 3.0

The *TKPH5401.PDX* and *TKPH5401.PPD* files in the *3.0 PPDs* folder are PostScript Printer Description files for use with Aldus, Adobe, and other applications. Refer to your application's documentation to see if this is the PPD version you should use.

1. Locate the *3.0 PPDs Folder* in the folder on your hard disk containing decompressed files.
2. Place the 3.0 PPD file and the PDX file with your other PPD files on your hard disk according to application needs.

Typically, PPD files are located in the *PPDs* folder, in the *Aldus* folder, inside the *System Folder*. Refer to your application's documentation for details. This file is used automatically by applications that require the information.

- If you are using Canvas 3.0, drag the 3.0 PPD and PDX files into the *PPDs* folder on your computer's hard disk. The *PPDs* folder may be found in the *Canvas* folder if you don't have any Aldus applications.

Aldus PageMaker 5.0 and Aldus FreeHand 4.0

The *TKPH5401.PPD* file in the *4.x PPDs* folder is a PostScript Printer Description file for use with Aldus, Adobe, and other applications. Refer to your application's documentation to see if this is the PPD version you should use.

The *4.x PPD* file is provided for support of future applications and may not work with current applications that require the 3.0 PPD file. Refer to your application's documentation to see which version of the PPD file you should use. *Do not use this 4.x PPD file unless your application requires it.*

1. Locate the *4.x PPDs Folder* in the folder on your hard disk containing decompressed files.
2. Place the *4.x PPD* file with your other PPD files on your computer's hard disk according to application needs.

Typically, PPD files are located in the *Printer Descriptions* folder, in the *Extensions* folder, inside the *System Folder*. Refer to the application's documentation for details.

- If you are using the LaserWriter 8.x printer driver, place the *4.x PPD* file in the *Printer Descriptions* folder, in the *Extensions* folder, inside the *System Folder*.

Printer description file for QuarkXPress

The *Phaser 540.PDF* file is a PostScript Printer Description file for QuarkXPress 3.11, 3.2, and 3.3. QuarkXPress lets you install support for other printers in addition to those shipped with the application. This file adds the Phaser 540 printer to the QuarkXPress list of supported printers.

The *Phaser 540.PDF* file is compressed into the *Phaser 540 Apps.sea* archive file on the Macintosh Driver and Printer Utilities diskette. Follow the instructions on page 2-12 to decompress this file, then continue with the steps listed below for your version of the application.

Note *For hints and tips on printing from QuarkXPress, request a document catalog from HAL or EuroHAL, the Tektronix automated fax systems. Refer to page 9-2 for instructions on using these systems.*

QuarkXPress 3.11 and 3.2

1. Locate the *Phaser 540.PDF* file in the folder on your hard disk containing decompressed utility files.
2. Place the *Phaser 540.PDF* file in the same folder as the QuarkXPress application on your computer's hard disk.
3. The printer's name appears alphabetically in the list of installed printers in the QuarkXPress custom Page Setup dialog box.

QuarkXPress 3.3

1. Locate the *Phaser 540.PDF* file in the folder on your hard disk containing decompressed utility files.
2. Place the *Phaser 540.PDF* file in the *PDF* folder inside the QuarkXPress 3.3 application folder on your computer's hard disk.
3. The printer's name appears alphabetically in the list of installed printers in the QuarkXPress custom Page Setup dialog box.

PANTONE Color template for Adobe Illustrator

Note For the latest information on color libraries, call Tektronix Customer Support in the U.S. and Canada at 1-800-835-6100. Outside the U.S. and Canada, contact your local Tektronix reseller.

The *PANTONE-Tek Phaser 540.ai* file lets you customize PANTONE Colors for Adobe Illustrator and a Phaser 540 printer. This file is application-specific and printer-specific.

The *PANTONE-Tek Phaser 540.ai* file is compressed into the *Phaser 540 Apps.sea* archive file on the Macintosh Driver and Printer Utilities diskette. Follow the instructions on page 2-12 to decompress this file, then continue with the steps listed below for your version of the application.

Adobe Illustrator 3.0

1. Locate the *PANTONE-Tek Phaser 540.ai* file in the folder on your hard disk containing decompressed utility files.
2. Drag the *PANTONE-Tek Phaser 540.ai* file to the *Illustrator* application folder on your hard disk.
3. Use this file as a template to create documents for printing.

Adobe Illustrator 5.0

1. Locate the *PANTONE-Tek Phaser 540.ai* file in the folder on your hard disk containing decompressed utility files.
2. Drag the *PANTONE-Tek Phaser 540.ai* file to the *Illustrator* application folder on your hard disk.
3. Choose Import Styles from the File menu and import the *PANTONE-Tek Phaser 540.ai* file.

PANTONE Color library files for Aldus applications

Note *For the latest information on color libraries, call Tektronix Customer Support in the U.S. and Canada at 1-800-835-6100. Outside the U.S. and Canada, contact your local Tektronix reseller.*

The *PANTONE-Tek Phaser 540.clib* and *PANTONE-Tek Phaser 540.acf* files are compressed into the *Phaser 540 Apps.sea* archive file on the Macintosh Driver and Printer Utilities diskette. Follow the instructions on page 2-12 to decompress these files, then continue with the steps listed below for your version of the application.

FreeHand 3.0 and 3.1

The *PANTONE-Tek Phaser 540.clib* file is used by the application to properly specify PANTONE Colors for Aldus FreeHand and a Phaser 540 printer.

- For FreeHand 3.0, refer to the *Aldus FreeHand User Manual Version 3.0 for Apple Macintosh Computers* for more information on color libraries.
 - For FreeHand 3.1, refer to the *Aldus FreeHand Guide to Installation, System 7.0 Compatibility, and Feature Updates: Version 3.1 for Apple Macintosh computers* for more information on color libraries.
1. Locate the *PANTONE-Tek Phaser 540.clib* file in the folder on your hard disk containing decompressed utility files. Place the file in a convenient location.
 2. Start FreeHand.
 3. Open the Colors palette in FreeHand (or press Command + 9).

4. Use one of the following methods to display the available color libraries:
 - FreeHand 3.0
Choose Library from the Colors palette submenu; a dialog box appears listing the available color libraries.
 - FreeHand 3.1
Choose Import from the Colors palette submenu; a dialog box appears listing the available color libraries.
5. Select and open the *PANTONE-Tek Phaser 540.clib* color library file. A dialog box appears with a list of available colors.
6. Select the color type, either Process or Spot.
7. Select the colors you want to use, then click OK. Use one of the following methods to select colors:
 - Select one color at a time.
 - Hold down the Shift key and click to select several colors.
 - Press Command + A to select all the colors in the list.

Selected colors are added to the Colors palette, the Colors dialog box, and all Colors pop-up menus.

FreeHand 4.0

The *PANTONE-Tek Phaser 540.acf* file is used by the application to properly specify PANTONE Colors for Aldus FreeHand and a Phaser 540 printer.

1. Locate the *PANTONE-Tek Phaser 540.acf* file in the folder on your hard disk containing decompressed utility files. Place the file in a convenient location.
2. Start FreeHand.
3. From the Colorlist window choose Options, Import, then select *PANTONE-Tek Phaser 540.acf*.

PageMaker 5.0

The *PANTONE-Tek Phaser 540.acf* file is used by the application to properly specify PANTONE Colors for Aldus PageMaker and a Phaser 540 printer.

1. Locate the *PANTONE-Tek Phaser 540.acf* file in the folder on your hard disk containing decompressed utility files.
2. Place the *PANTONE-Tek Phaser 540.acf* file in the *Color* folder, in the *Aldus* folder, inside the *System Folder*.
3. Start PageMaker.
4. Choose Element, Define Colors, New, Libraries, then select *PANTONE-Tek Phaser 540.acf*.

Printing From a PC

Using the Tektronix printer driver for Windows

System requirements

The Tektronix Windows printer driver requires the following hardware and software:

- An IBM or compatible computer, with a 386 or higher processor
- One floppy-disk drive (3.5-inch drive with 1.44-Mbyte capacity),
- A hard disk
- Two Mbytes of memory
- MS-DOS 5.0 or higher operating system
- Windows 3.1

Accessing on-line help

On-line help is available in two ways:

- For general Windows 3.1 information about printers and setting options, select Help from the Control Panel menu bar and choose a topic from the Help menu. A Help window appears, offering information on the selected topic and listing other related topics.
- The Tektronix driver uses the Microsoft help file *PSCRIPT.HLP*. This file is shipped with the Microsoft PostScript driver and must be installed before you can use Help. After installing this file, you can get information about the Tektronix driver by choosing Help in the Printer Setup dialog box. (To access this dialog box, open the Printers dialog; then open the Printers-Configure dialog.)

Do you already have Tektronix printers installed?

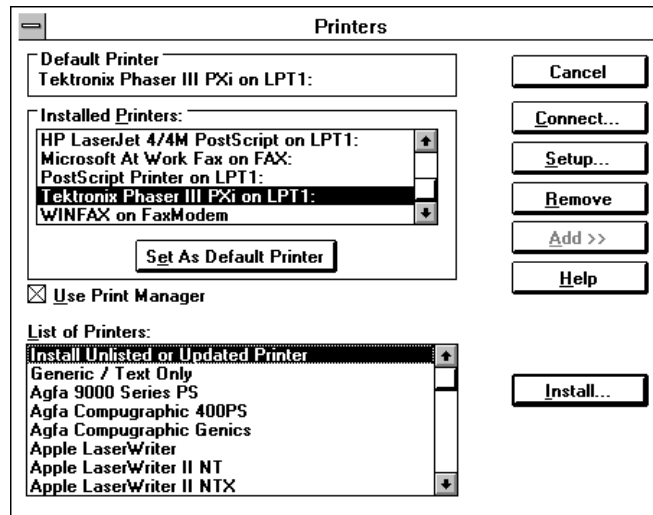
If you have any Tektronix printers that you installed using the older Tektronix *Installer* program or you have the obsolete TekColor PS Previewer software installed, you can remove the old files to clean up your hard disk.

After deleting the old files, you can use the latest Tektronix Windows driver to reinstall all of your Tektronix printers using the current driver software. For instructions on this procedure, request a document catalog from HAL or EuroHAL, the Tektronix automated fax systems. Refer to page 9-2 for instructions on using these systems.

Installing the driver

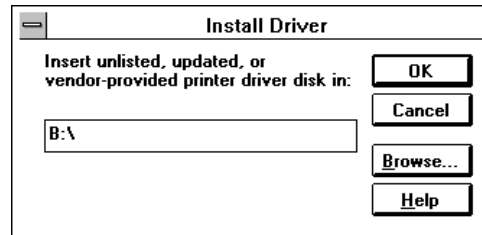
The Tektronix Windows driver is a Windows PostScript driver customized for Tektronix printers. These instructions assume a basic familiarity with Windows operation and terminology. For additional information about Windows, refer to your Microsoft Windows documentation.

1. Insert the Tektronix Windows 3.1 Driver and Printer Utilities diskette into your computer's disk drive; for example, drive B:.
2. Start Windows.
3. Open the Control Panel. Double-click on the Printers icon; the Printers dialog box appears.
4. Click the Add>> button.
5. In the List of Printers, select Install Unlisted or Updated Printer.

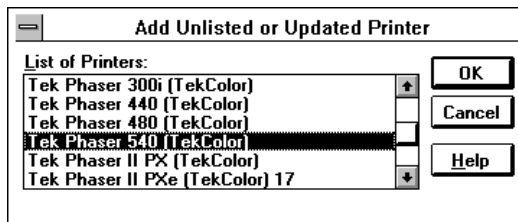


6. Click the Install button.

7. Type in the name of the drive containing the PC diskette (for example, drive B:) and choose OK.



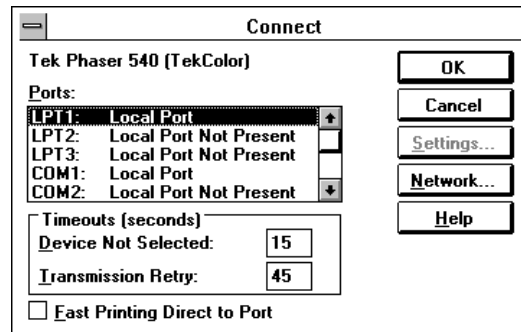
8. Select your printer and click OK.



The driver software you need is automatically installed. Continue with the next topic, "Configuring the driver."

Configuring the driver

1. The Printers dialog box should already be displayed; if not, open the Control Panel and double-click the Printers icon.
2. Select your printer from the list of installed printers.
3. Click the Set As Default Printer button if you want to select your printer as the default.
4. Click the Connect button to display the Connect dialog box.



5. Select the port that your printer is connected to.

Interface	Select	Then do the following
Parallel	LPT1 or LPT2	Go to Step 6.
Serial	COM1 or COM2	<ol style="list-style-type: none"> 1. Click the Settings button to open the Settings dialog box. 2. Fill in each item based on your configuration, then click OK. <p>Refer to your Microsoft Windows documentation for details, or ask your network administrator for help.</p>
Network	Network port (LPT or COM)	<ol style="list-style-type: none"> 1. Click the Network button to open the Printers-Network Connections dialog box. 2. Fill in each item based on your configuration, then click OK. <p>Refer to your Microsoft Windows documentation for details, or ask your network administrator for help.</p>

The printer's configuration page contains the information you need to set up the printer's port. Refer to "Printing a configuration page" on page A-4 for more information.

Note You can use the *FILE: port* to send a PostScript document to a file instead of to the printer. For more information, see your Microsoft Windows documentation.

6. Set the Timeouts. These options regulate your computer's communications with its printer ports.
 - Device Not Selected
Type a value of 0, or between 15 and 999, in this text box to change the number of seconds Windows waits before notifying you that a printer is off-line. The default is 15 seconds.
 - Transmission Retry
On large or multiple-page documents, you may see an alert message that the printer is no longer accepting data before the job is completely downloaded to the printer. When using the Print Manager with a shared printer, set this option to a larger value, such as 850, to avoid these unnecessary timeouts. Type a value between 45 and 850 in this text box; the default value is 45 seconds.
7. Click OK to return to the Printers dialog box, then click the Setup button. A dialog box appears with the name of the printer you selected across the top. Use this dialog box to select the paper source, paper size, and image orientation.
8. Click the Options button to open the Options dialog box. Make sure that the Color box is checked to print in color.
9. From the Options dialog box, click the Advanced button to open the Advanced Options dialog box. Make sure the Use PostScript Level 2 Features check box is checked.

Note *The Use PostScript Level 2 Features option affects the print time of bitmapped (raster) images by improving the image transfer time from the computer to the printer, and by improving the image processing time in the printer. This option is available only to applications that use this Tektronix driver with Tektronix PostScript Level 2 printers, such as the Phaser 540. When this box is checked, the Compress Bitmaps option is unavailable (grayed out).*

10. Click OK to return to the Options dialog box.
11. In the Options dialog box, click the Printer Features button to open the Tektronix Printer Features dialog box. Make color correction and print quality selections as desired. Click OK to return to the Options dialog box.
12. Click OK to return to the dialog box that lists your printer's name across the top.
13. Click OK to return to the Printers dialog box; then choose the Close button.

If you are using PC/NFS

If you have PC/NFS software installed on your computer, you need to make the following selection in the Network Options dialog box:

1. Double-click the Print Manager icon in the Main window.
2. Select Network Settings from the Options menu in the Print Manager.
3. Uncheck the Print Net Jobs Direct box in the Network Options dialog box.
4. Click OK.

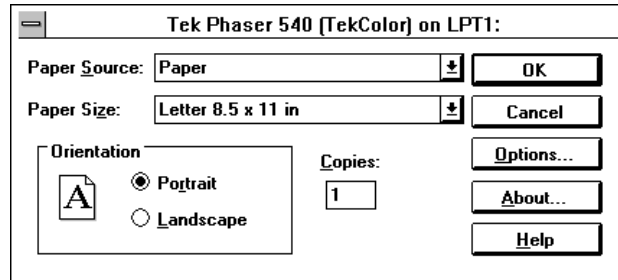
Using the driver's options

Use the following dialog boxes to select printing options:

- Printer Setup dialog box
- Options dialog box
- Tektronix Printer Features dialog box

Making selections in the Printer Setup dialog box

To reach the Printer Setup dialog box without running an application, open the Control Panel, double-click on the Printers icon, then click the Setup button. Make printer selections in the fields described in the following table.

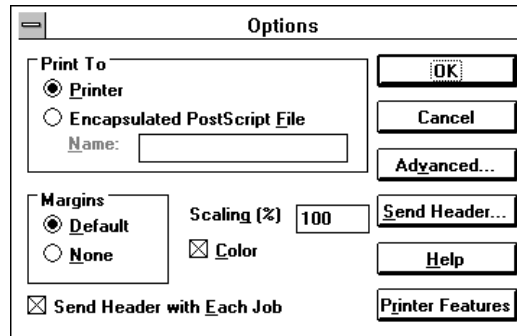


Printer Setup dialog box options

Dialog box options	Option description
Paper Source	Select a paper source from the pop-up menu. Refer to the table on page 5-7 for a complete list of paper sources.
Paper Size	Select a paper size from the pop-up menu. Refer to the table on page 5-2 for a list of paper sizes and image areas.
Orientation	Select one of the following options to determine how an image is placed on the paper: <ul style="list-style-type: none"> ■ Portrait (vertical) ■ Landscape (horizontal)
Copies	Type in the number of copies (prints) you want. (You may want to set the number of copies from your application because the number of copies in the Printer Setup dialog box remains the same until you change it again.) If you are printing multiple copies, make sure the Transmission Retry (described on page 3-9) is set for at least 600 seconds (10 minutes).

Making selections in the Options dialog box

From the Printer Setup dialog box, click the Options button to open the Options dialog box. Refer to your Microsoft Windows documentation for details on the options in this dialog box. Make printer selections in the fields described in the following table.



Options dialog box options

Dialog box options	Option descriptions
Print To	Select one of the following options: <ul style="list-style-type: none"> ■ Printer ■ Encapsulated PostScript File (This option generates an EPS graphic that can be imported into other applications. This option does not create a printable file. Use the FILE port to print to a file.)
Scaling	Type in a percentage value to scale the printed image.
Margins	Select one of the following options: <ul style="list-style-type: none"> ■ Default ■ None
Color	Check this box on to print in color.
Send Header with Each Job	This box must be checked on . (The header contains important PostScript information that must accompany each print job; it is not a banner page printed with each job. If this box is not checked, an error message is displayed on your computer screen and your job does not print.)
Printer Features button	Choose this button to open the Tektronix Printer Features dialog box.

Making selections in the Tektronix Printer Features dialog box

From the Options dialog box, click the Printer Features button to open the Tektronix Printer Features dialog box. Make printer selections in the fields described in the following table. Refer to Chapter 5, “Selecting Media and Image Options,” and Chapter 6, “Using Color,” for details on these options.

Tektronix Printer Features		
Color Correction:	Vivid Color	OK
Print Quality:	Standard	Cancel
<input checked="" type="checkbox"/> Output Face Up?		Help...

Tektronix Printer Features dialog box options

Dialog box options	Option description
Color Correction	Select one of the following options: <ul style="list-style-type: none"> ■ None ■ Vivid Color ■ Simulate Display ■ SWOP Press ■ Euroscale Press ■ Commercial Press ■ Monochrome ■ Use Printer Setting
Print Quality	Select one of the following options (see page 5-10 for more information on these options): <ul style="list-style-type: none"> ■ Fast ■ Standard ■ Enhanced
Output Face Up	To stack printouts face up, check this box. To stack printouts face down, uncheck this box.

Installing the Tektronix driver on a network

Note *For more information on the following procedure, request a document catalog from HAL or EuroHAL, the Tektronix automated fax systems.*

1. Install the Tektronix Windows driver as described on page 3-4.
2. Edit the *CONTROL.INF* file as follows to make the driver available to other users:
 - a. Start Notepad, or a similar text editor.
 - b. Insert the Tektronix Windows 3.1 Driver and Printer Utilities diskette into your computer's disk drive; for example, drive B.
 - c. In Notepad, open the *CONTROL.ADD* file on the Tektronix diskette.
 - d. Locate the Tektronix Phaser printer entries. Select your printer (highlight the line for your printer), and copy the line to the Clipboard by selecting Copy from the Edit menu. If desired, you can select and copy all the Tektronix printers listed.

- e. In Notepad, open the *CONTROL.INF* file located in the network *WINDOWS\SYSTEM* subdirectory by selecting Open from the File menu.
 - f. Search for the string *Phaser* to find the existing Tektronix printer entries.
 - g. Select Paste from the Edit menu to paste the printer information from the Clipboard into the *CONTROL.INF* file above the existing Tektronix printer entries.
 - h. If desired, the existing Tektronix printer entries can be deleted or commented-out by placing a semicolon (;) at the beginning of each line. It might be less confusing to users to have only one Tektronix printer to choose from in the driver.
3. Windows users can add the Tektronix printer to their Printers Control Panel using the Add>> button.

Updating the standard Microsoft Windows PostScript driver

If you prefer to use the standard Microsoft Windows PostScript printer driver instead of the Tektronix Windows driver, follow these instructions. This update procedure provides printer page size information for Windows applications using the standard Microsoft driver. However, color corrections and other PostScript Level 2 features are available only with the Tektronix Windows 3.1 driver and are not supported by the standard Microsoft driver. Refer to Chapter 6, “Using Color,” for instructions on other ways of selecting color corrections.

These instructions assume a basic familiarity with Windows operation and terminology. For additional information about Windows, refer to your Microsoft Windows documentation.

Note *If you want to install the Tektronix Windows driver, follow the instructions on page 3-4.*

1. Start Windows.
2. Open the Control Panel.
3. Double-click on the Printers icon.
4. Click the Add>> button; a list of printers displays.

5. Select Install Unlisted or Updated Printer.
6. Click the Install button.
7. When prompted, insert the Tektronix Windows 3.1 Driver and Printer Utilities diskette into your computer's disk drive.
8. Type in the letter for the computer's disk drive followed by the \WPD subdirectory:

B : \WPD

Then click OK.

9. Select your printer from the list, then click OK.

Note *Printers using the Tektronix Windows driver have (TekColor) listed in their name. Printers without this designation are using the standard Microsoft Windows PostScript driver and the WPD file.*

10. When asked to insert a diskette containing the updated *PSCRIPT.DRV* file, enter the path for your *WINDOWS\SYSTEM* subdirectory, or insert the appropriate Microsoft Windows diskette. This ensures that the current *PSCRIPT.DRV* file is used. (The *PSCRIPT.DRV* file is *not* included on the Tektronix diskettes.)

Updating a Windows NT PostScript driver

If you are using Microsoft Windows NT, follow these instructions to print to a Phaser 540. This update procedure provides printer page size information for Windows NT applications. However, TekColor color corrections and other PostScript Level 2 features are not supported by the Windows NT driver. Refer to Chapter 6, “Using Color,” for instructions on other ways of selecting color corrections. Refer to your Microsoft Windows NT documentation for details on features in the Windows NT driver.

These instructions assume a basic familiarity with Windows NT operation and terminology. For additional information about Windows NT, refer to your Microsoft Windows NT documentation.

Note You may need your original Windows NT setup diskettes (or CD-ROM) to complete this procedure if you need to install a PostScript printer in Step 4.

1. Start your system with Windows NT.
2. If your computer platform has an Intel-compatible processor, such as the Intel I386, go on to Step 3.

If your computer platform is a MIPS or Alpha, you need to edit the *PRINTER.INF* file in the *APPLSPEC\PPD4.x* directory on the Tektronix Windows 3.1 Driver and Printer Utilities diskette.

- a. The Tektronix Windows 3.1 Driver and Printer Utilities diskette is write-protected. To edit the *PRINTER.INF* file, copy the following files from the Tektronix diskette to a new, formatted floppy diskette. Place all three files at the top (root) level of the new diskette.

TEK1 (from the top level of the Tektronix diskette)

PRINTER.INF (from the *APPLSPEC\PPD4.x* subdirectory)

TKPH5401.PPD (from the *APPLSPEC\PPD4.x* subdirectory)

- b. Open the copy of the *PRINTER.INF* file on the new diskette in a text editor such as Notepad.

- c. Locate the following section in the file:

```
[ProductType]
STF_PLATFORM = I386
```

- d. Replace the I386 with either MIPS (for a MIPS platform) or Alpha_AXP (for an Alpha platform).
 - e. Save the *PRINTER.INF* file and go to Step 3.
3. From the Main window, double-click on the Print Manager icon.
 4. If you have a PostScript printer driver installed, go to Step 5.

If you *don't have* a PostScript printer driver installed, install one now. You need to have a PostScript printer driver installed because these driver files are needed later in this procedure to complete the Tektronix Phaser 540 driver installation.

- a. From the Printer menu, select Create Printer; the Create Printer dialog box appears.
 - b. Under Driver, scroll through the list and select a PostScript printer, such as the Apple LaserWriter, and choose the OK button.
 - c. Follow the on-line instructions to install the driver files from your Windows NT CD-ROM or diskettes.
5. Install the Tektronix Phaser 540 printer driver. From the Printer menu, select Create Printer; the Create Printer dialog box appears.
 6. Under Driver, scroll to the end of the list and select Other; the Install Driver dialog box appears.
 7. When prompted, insert either the Tektronix Windows 3.1 Driver and Printer Utilities diskette, or the new diskette you created in Step 2, into your computer's disk drive.

- If you are using the Tektronix Windows 3.1 Driver and Printer Utilities diskette: Type in the disk drive location of the diskette and change to the *APPLSPEC\PPD4.x* directory. Click OK; the Select Driver dialog box appears.
 - If you are using an edited copy of the *PRINTER.INF* file from Step 2: Type in the disk drive location of the diskette. Click OK; the Select Driver dialog box appears.
8. Under Printer Driver, choose the Phaser 540 printer from the list, then click OK.
 9. In the Windows NT Setup dialog box, type in the same path you used in Step 7 (for example, *B:\APPLSPEC\PPD4.x*).
Click the Continue button; the Noncritical Error dialog box appears.
 10. When you are prompted for the location of the *PSCRPTUI.DLL* file and the *PSCRIPT.DLL* file, click the Ignore button. (These files were installed previously.)
 11. When the Create Printer dialog box appears, fill in the other fields as desired, then click OK; the PostScript Printer Setup dialog box appears.
 12. Select options in the PostScript Printer Setup dialog box. Enabling the Use Printer Halftoning option is recommended. Then click OK; the Windows NT Setup dialog box appears.
 13. If you installed a PostScript printer driver in Step 4, follow this procedure to delete it. (Now that the Phaser 540 driver is installed, this driver is not needed.)
 - a. Select the printer you want to remove.
 - b. From the Printer menu, select Remove Printer.
 - c. At the prompt, click OK to remove the selected printer.

Note Use the following page sizes with the Phaser 540: Letter and A4.

Printing from DOS

Note *Driver-selectable TekColor color correction features are available only through the Tektronix drivers for the Windows environment and Macintosh computers as described in this manual. Refer to Chapter 6, “Using Color,” for instructions on other ways of selecting color corrections.*

Printing from a driver

Many DOS applications include printer drivers for Tektronix printers. Check your application to see if it was shipped with a printer driver for a Phaser 540. Install and use the driver according to the application’s documentation.

If the application you are using does not have a driver for a Phaser 540:

- Check to see if other Tektronix Phaser series printers are listed, and choose one of them. Otherwise, you can use a generic color PostScript printer driver. However, generic drivers do not have information on the printer’s page sizes and image areas, so images may be clipped or shifted when printed.
- Contact the application’s vendor, or call Tektronix Customer Support in the U.S. and Canada at 1-800-835-6100, for printing information. Outside the U.S. and Canada, contact your local Tektronix reseller.

Refer to the *Phaser 540 Color Printer User Manual* for information on using the DOS MODE command to disable timeouts on a parallel port.

Using color corrections

DOS drivers do not include the TekColor color correction options. Refer to Chapter 6, “Using Color,” for instructions on other ways of selecting color corrections.

Using the PC utility files

The utility files change the way the printer operates. To use the files, send them to the printer from the communications port your printer is connected to. You can use either the DOS method or the Windows method described in the following topics.

Downloading files from DOS

You can use the DOS COPY command to download PostScript files to the printer.

1. Locate the files you want to use on the Tektronix Windows 3.1 Driver and Printer Utilities diskette. You can copy the files to your computer's hard disk, or use the files directly from the diskette.
2. Use the DOS COPY command to send the desired file to the printer. For example, to reset the printer, you would send the *RESET.PS* file to the printer.

If your printer is connected to the parallel (LPT) port, type the following command (where x is 1, 2, or 3):

```
COPY RESET.PS LPTx:
```

If your printer is connected to the optional serial (COM) port, type the following command (where x is 1, 2, or 3):

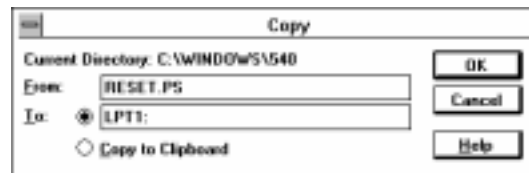
```
COPY RESET.PS COM x:
```

If your printer is connected to an optional Novell or TCP/IP network, you should follow the instructions provided with your network software.

Downloading files from Windows

You can use the Copy command in the Windows File Manager to download PostScript files to the printer.

1. Locate the files you want to use on the Tektronix Windows 3.1 Driver and Printer Utilities diskette. You can copy the files to your computer's hard disk, or use the files directly from the diskette.
2. In Windows, double-click the File Manager icon in the Main window.
3. Locate the drive and directory or subdirectory containing the printer's utility files.
4. Select the utility file you want to send to the printer, for example *RESET.PS*.
5. Select Copy from the File menu. The Copy dialog box appears with the selected utility file displayed in the From field.



6. In the To field, type the port your printer is connected to. For example, type LPT1: for a parallel port connection. Click OK.
7. If the Confirm File Replace dialog box appears, click the Yes button to continue. The file is downloaded to the printer.

All of the files in the following table can be downloaded to the printer using the DOS COPY command or the Windows File Manager.

Downloadable utility files		Where to find details
■ <i>ADDCTRLD.BAT</i>	■ <i>CTRLD.PS</i>	Chapter 3
■ <i>DEVPARAM.PS</i>		Chapter 3
■ <i>PRNTNAME.PS</i>		Chapter 3
■ <i>ANYTRAY.PS</i>	■ <i>MIDDTRAY.PS</i>	Chapter 5
■ <i>LOWRTRAY.PS</i>	■ <i>UPPRTRAY.PS</i>	
■ <i>COMRCIAL.PS</i>	■ <i>RAWCMYK.PS</i>	Chapter 6
■ <i>DISPLAY.PS</i>	■ <i>RAWRGB.PS</i>	
■ <i>EUROSCAL.PS</i>	■ <i>SWOPRESS.PS</i>	
■ <i>MONOCHRM.PS</i>	■ <i>VIVDCOLR.PS</i>	
■ <i>NOCORECT.PS</i>		
■ <i>FONTS.PS</i>		
■ <i>RESET.PS</i>	■ <i>TEKEHAND.PS</i>	Chapter 8
■ <i>SETSCRN.PS</i>		
■ <i>FRMTDISK.PS</i>	■ <i>NOSYSTRT.PS</i>	Appendix B
■ <i>INITDISK.PS</i>	■ <i>SYSTART.PS</i>	
■ <i>AIS.PS</i>	■ <i>HPGLTEST.PLT</i>	Appendix C
■ <i>HPGL.PS</i>	■ <i>PSTEST.PS</i>	
■ <i>HPGLPENS.PS</i>	■ <i>PSCRIPT.PS</i>	
■ <i>CONFIG.PS</i>		Appendix C

Changing the printer's name

This procedure explains how to change the printer's name. The printer's name has the following characteristics:

- It prints on the startup and configuration pages.
 - It is used by both LocalTalk and EtherTalk to identify the printer.
 - It can be up to 31 characters long, and may contain any printable characters except @ (at sign) and : (colon).
 - The default printer name is Phaser 540. If more than one printer has the same name in a given zone, numbers are appended to the names of the printers added later; for example, Phaser 540-1 and Phaser 540-2.
 - A name change is persistent across printer power cycles.
1. Locate the *PRNTNAME.PS* file in the *PHSR540* directory on the Tektronix Windows 3.1 Driver and Printer Utilities diskette.
 2. Copy the file to your hard disk for editing.
 3. Open the *PRNTNAME.PS* file in a text editor.

4. Substitute a different printer name for (My Printer Name) in the /PrinterName line and save the file.
5. Use one of the following methods to send the file to the printer:
 - PC users: Use the DOS COPY command or the Copy command in Windows File Manager to send the file to the printer. See page 3-26 and page 3-28 for details.
 - Workstation users: Send the file to the printer as you would any PostScript file.

Note *Some text editors add a carriage return or line feed after the last Control-D character in files you edit. If your computer is connected to the printer through the parallel port, or the optional serial port, the extra characters start a new job and the printer times out after a few minutes. To avoid this, copy the CTRLD.PS file to the printer after you send the PRNTNAME.PS file; see page 3-34 for more information on the CTRLD.PS file.*

Adding Control-D characters to PC files

The *ADDCTRLD.BAT* and *CTRLD.PS* files are located in the *PHSR540* directory on the Tektronix Windows 3.1 Driver and Printer Utilities diskette. These files are included for users who want to write their own PostScript files.

Note *If your computer is connected to the printer through the parallel port, or the optional serial port, you need to use Control-D characters in your utility files or in the files you create. However, if your computer is connected to a network such as NetWare or TCP/IP, you should not add Control-D characters to a utility file.*

The non-text Control-D character is required at the end of PostScript files sent to the printer's parallel port, or the optional serial port; it signals "end-of-job." A Control-D should precede and follow most PostScript data files. *ADDCTRLD.BAT* and *CTRLD.PS* help you add two Control-D characters to your files.

ADDCTRLD.BAT

ADDCTRLD.BAT is a batch file that adds a Control-D to the beginning and the end of a file. Use this file if you are creating your own PostScript files.

To use *ADDCTRLD.BAT*, copy *ADDCTRLD.BAT* and *CTRLD.PS* to the same directory on your hard disk. Type the following command:

```
ADDCTRLD filename
```

where *filename* is the name of the file that needs Control-D characters.

CTRLD.PS

CTRLD.PS contains some PostScript comments plus the Control-D character. Copy *CTRLD.PS* to the beginning and/or end of your PostScript files before you send them to the printer. (PostScript utility files on the Tektronix Windows 3.1 Driver and Printer Utilities diskette already have Control-D characters at the beginning and end.) You can send *CTRLD.PS* to the printer by itself to make sure the printer is in the "end of job" state.

Printing from an application

Note For hints and tips on printing from a specific application, request a document catalog from HAL or EuroHAL, the Tektronix automated fax systems. Refer to page 9-2 for instructions on using these systems.

Printer description files are located in the *APPLSPEC* directory on the Tektronix Windows 3.1 Driver and Printer Utilities diskette. These files are required by some applications; refer to your application's documentation to determine if you need to use one or more of these files.

You should always use the most current printer description file. To determine the date of the file you are using, do the following:

1. Select (highlight) a file and choose Get Info from the File menu. Make a note of the version date.
2. Check the Tektronix BBS to see if the PPD files you have are the most recent. Refer to page 9-1 for instructions on using the BBS.

A few applications and their corresponding printer description files are listed in the table below; see the pages that follow for details on each printer description file.

Printer Description Files for the Phaser 540

Application and version number	Printer Description File
Aldus PageMaker 4.0, 4.2, 4.2A (use both PPD and PDX)	TKPH5401.PPD (version 3.0) TKPH5401.PDX
Aldus PageMaker 5.0	TKPH5401.PPD (version 4.x)
Aldus FreeHand 3.0 or 3.1 (use both PPD and PDX)	TKPH5401.PPD (version 3.0) TKPH5401.PDX
Aldus FreeHand 4.0	TKPH5401.PPD (version 4.x)
QuarkXPress 3.3 (requires Windows 3.1)	TKPH5401.PDF

Printer description files for Aldus, Adobe, and other applications

There are 3.0 and 4.x versions of the PPD files; use the version required by your application. Most applications that use 3.0 PPD files also use PDX files.

Note *Also included on the Windows 3.1 Driver and Printer Utilities diskette are files for use with a Japanese Kanji language version of the printer (TKP540J1.PPD, TKP540J1.PDX).*

Aldus PageMaker 4.0, 4.2 and 4.2A Aldus FreeHand 3.0 and 3.1

The *APPLSPEC\PPD3.0* subdirectory on the Tektronix Windows 3.1 Driver and Printer Utilities diskette contains the version 3.0 *TKPH5401.PPD* file and the *TKPH5401.PDX* file that are required by some Windows applications, such as Aldus FreeHand and PageMaker.

To use these files, copy them to the directory on your computer's hard disk where your other PPD files are located. For example, the subdirectory which contains printer description files for FreeHand should be called *ALDUS\USEENGLSH\PPDS*. Refer to your application's documentation for details on using printer description files.

Aldus PageMaker 5.0 and Aldus FreeHand 4.0

The *APPLSPEC/PPD4.x* subdirectory on the Tektronix Windows 3.1 Driver and Printer Utilities diskette contains the version 4.x *TKPH5401.PPD* printer description file. This file is provided for support of certain Windows applications, such as newer Aldus applications.

To use this file, copy it to the directory on your hard disk where your other PPD files are located. For example, the subdirectory which contains printer description files for FreeHand should be called *ALDUS\USEENGLSH\PPD4*. Refer to your application's documentation for details on using printer description files.

Printer description file for QuarkXPress

The *TKPH5401.PDF* file is a PostScript Printer Description file used with QuarkXPress 3.3 and Windows 3.1. To install the file, copy *TKPH5401.PDF* from the Tektronix Windows 3.1 Driver and Printer Utilities diskette into the *PDF* subdirectory of the QuarkXPress 3.3 application. For example:

```
COPY TKPH5401.PDF C:\XPRESS33\PDF
```

PANTONE Color library file for Adobe Illustrator

Note For the latest information on color libraries, call Tektronix Customer Support in the U.S. and Canada at 1-800-835-6100. Outside the U.S. and Canada, contact your local Tektronix reseller.

The *TEK_540.AI* file is located in the *APPLSPEC* directory on the Tektronix Windows 3.1 Driver and Printer Utilities diskette. This file lets you customize PANTONE Colors for Adobe Illustrator and a Phaser 540 printer. This file is application-specific and printer-specific.

Adobe Illustrator 3.0 and 4.02

1. Copy the *TEK_540.AI* file to your computer's hard disk; for example, to Adobe Illustrator's *Color* directory.
2. Start the Illustrator program.
3. Open the file or image you want to use.
4. From the File menu, select the Open command.
5. In the dialog box that appears, locate the directory and file location of the *TEK_540.AI* file, and open the file.
6. When you are working on an image, use the Paint menu and either the Paint Style or Custom Color commands to select PANTONE Colors.

PANTONE Color library file for Aldus applications

Note *For the latest information on color libraries, call Tektronix Customer Support in the U.S. and Canada at 1-800-835-6100. Outside the U.S. and Canada, contact your local Tektronix reseller.*

FreeHand 3.0 and 3.1

The *TEK_540.CLB* file is located in the *APPLSPEC* directory on the Tektronix Windows 3.1 Driver and Printer Utilities diskette. This file is used by the Aldus FreeHand application to properly specify PANTONE Colors for the Phaser 540 printer. This file is application-specific and printer-specific.

1. Copy the *TEK_540.CLB* file to your computer's hard disk; for example, to the FreeHand application directory.
2. Open FreeHand.
3. Use one of the following methods to display the available color libraries:
 - FreeHand 3.0
Choose Library from the Colors palette submenu; a dialog box appears listing available color libraries.
 - FreeHand 3.1
Choose Import from the Colors palette submenu; a dialog box appears listing available color libraries.
4. Select and open the *TEK_540.CLB* color library; a dialog box appears with a list of available colors.
5. Select the colors you want to use, then click OK. Selected colors are added to the Colors palette, the Colors dialog box, and all Colors menus.

PageMaker 5.0

The *TEK_540.ACF* file is located in the *APPLSPEC* directory on the Tektronix Windows 3.1 Driver and Printer Utilities diskette. This file is used by the application to properly specify PANTONE Colors for Aldus PageMaker and a Phaser 540 printer. This file is application-specific and printer-specific.

1. Copy the *TEK_540.ACF* file from the Tektronix Windows 3.1 Driver and Printer Utilities diskette to your hard disk.
2. Place the file in the *USEENGLISH\COLOR* subdirectory in the *ALDUS* application directory.
3. Start PageMaker.
4. Choose Element, Define Colors, New, Libraries, then select the Phaser 540.

PANTONE Color palette file for CorelDRAW!

Note *For the latest information on color libraries, call Tektronix Customer Support in the U.S. and Canada at 1-800-835-6100. Outside the U.S. and Canada, contact your local Tektronix reseller.*

The *TEK_540.PAL* file is located in the *APPLSPEC* directory on the Tektronix Windows 3.1 Driver and Printer Utilities diskette. This file is used by the CorelDRAW! application to properly specify PANTONE Colors for a Phaser 540 printer. This file is application-specific and printer-specific.

1. Copy the *TEK_540.PAL* file to your computer's hard disk; for example, to the Corel application directory.
2. Open CorelDRAW!.
3. Open the document file you want to work in.
4. Select the item you want filled with a PANTONE Color, then select the Fill tool icon (paint bucket).
5. Select the Fill tool icon again, then click the Open button under Palette.
6. In the dialog box under Path, specify the location of the *TEK_540.PAL* file.
7. Under Files, select the *TEK_540.PAL* file and click the Load button.

Printing from a UNIX Workstation

Printing information

You can send print files from your workstation to a Phaser 540 printer as you would to any PostScript printer; for example, the Apple LaserWriter. Workstation users can print from any application that generates PostScript Level 1 or Level 2.

For more information on printing from a workstation, request a document catalog from HAL or EuroHAL, the Tektronix automated fax systems. Refer to page 9-2 for instructions on using these systems.

You can access the TekColor color corrections and other printer features using the downloadable utility files described in this manual, or the printer's front panel menus. Refer to the *Phaser 540 Color Printer User Manual* for instructions on using the printer's front panel.

Faster printing with Tektronix Phaser Print software

For Unix and VMS environments, Tektronix offers Phaser Print. Phaser Print provides fast raster screen copy printing to Tektronix color printers. Phaser Print also provides a graphical user interface for push-button control of Tektronix printer features.

Phaser Print software is available for these workstations:

Sun:	SunOS 4.1.X, Solaris 2.X
SGI:	IRIX 4.0.5 and 5.2
HP 9000 700/800:	HPUX 9.X
IBM RS/6000:	AIX 3.2
DECstation:	Ultrix 4.X
DEC Alpha AXP:	OSF/1 1.3
DEC VAX*:	VMS
DEC Alpha AXP*:	Open/VMS

*Supported through alternate printing solutions

Phaser Print works with the workstation's native spooling system to print PostScript files and raster files in these formats: Sun Raster Format (SRF), xwd, and SGI RGB.

If you ordered the TCP/IP Ethernet option for your printer, you received a demonstration copy of Phaser Print on a compact disk (CD). If you did not receive a demonstration CD but would like one, contact your dealer, local Tektronix office or in the United States or Canada call 1-800-835-6100.

For information on printing from workstations and setting up spooling systems, you can contact HAL, the Tektronix automated fax system by calling direct (503) 682-7450 or, in the United States or Canada, by calling toll-free 1-800-835-6100. Refer to page 9-2 for details on using the HAL system.

Locating workstation procedures

The following table lists procedures and tasks for workstation users that are described in other chapters in this manual:

Task	Where to find details
Changing the printer's name.	page 3-23
Selecting media trays.	page 5-7
Selecting print quality.	page 5-11
Selecting color corrections.	page 6-7
Printing color sampler charts.	page 6-15 and page 6-17
Printing a font sampler.	page 7-6
Using the Tektronix error handler.	page 9-9
Using the Setscreen patch for halftone screens.	page 9-17
Resetting the printer.	page 9-23
Enabling and disabling the startup page.	page A-2
Printing a configuration page.	page A-4
Setting the EtherTalk Zone.	page A-6
Enabling and disabling front panel menus.	page A-9
Configuring a serial port.	page A-11
Formatting a SCSI hard disk.	page B-2
Initializing a formatted SCSI hard disk.	page B-4
Controlling SysStart Job files.	page B-5
Setting PostScript job and wait timeouts.	page C-2
Changing printer language mode.	page C-4

Using the utility files

For some printer features, you can use the downloadable utility files available on the Tektronix Windows 3.1 Driver and Printer Utilities diskette. To mount the diskette, refer to the instructions on page 4-6. If you cannot use this diskette, refer to page 4-8 for instructions on obtaining the files from other sources.

You can use the utility files to perform a variety of tasks, such as changing the printer's name, resetting the printer, and using an error handler. The utility files are written in the PostScript Level 2 programming language. In a few cases, you may have to edit the utility files to change the default parameters.

About Control-D characters

A Control-D character is used to indicate the end of a file when printing through a parallel or a serial port. Without a Control-D character in the file, the printer continues waiting for more input.

All PostScript utility files, except *RESET.PS*, should start and end with a Control-D character when sent from a workstation over a parallel or serial interface. In the file descriptions, Control-D is denoted as CTRL-D. For more information about PostScript programming, refer to the *PostScript Language Reference Manual*, second edition, Adobe Systems Incorporated.

Removing Control-D characters from utility files

1. Locate the *delctrl*d UNIX shell script in the *PHSR540* directory on the Tektronix Windows 3.1 Driver and Printer Utilities diskette. You must copy this file to your workstation before you can use it. (Or, obtain this shell script using one of the methods described in “Obtaining the PC utility files” on page 4-8.)
2. To remove all Control-D characters from a file, type the following command:

```
delctrld filename1.ps filename2.ps
```

where *filename1.ps* is the utility file you want to remove Control-D characters from, and *filename2.ps* is the revised file with a new name. (Both *filename1.ps* and *filename2.ps* can have the same name, but the original file will be overwritten by the revision.)

3. Send the utility file to the printer as you would any PostScript file.

Adding Control-D characters to utility files

1. Locate the *addctrl*d UNIX shell script in the *PHSR540* directory on the Tektronix Windows 3.1 Driver and Printer Utilities diskette. You must copy this file to your workstation before you can use it. (Or, obtain this shell script using one of the methods described in “Obtaining the PC utility files” on page 4-8.)
2. To add Control-D characters to the beginning and end of a file, type the following command:

```
addctrld filename1.ps filename2.ps
```

where *filename1.ps* is the utility file you want to add Control-D characters to, and *filename2.ps* is the revised file with a new name. (Both *filename1.ps* and *filename2.ps* can have the same name, but the original file will be overwritten by the revision.)

3. Send the utility file to the printer as you would any PostScript file.

Mounting the PC/DOS diskette on a workstation

Note *The following procedures give instructions for mounting the PC/DOS diskette on SGI IRIX versions 4.0.x and 5, and Sun running Solaris 2.3. For instructions on mounting the diskette on a Sun OS 4.1.3, request document number 9501 from HAL, the automated fax system. Refer to page 9-2 for instructions.*

SGI IRIX versions 4.0.x and 5

PC/DOS-formatted diskettes can be easily mounted in the SGI environment. For more information, print the appropriate man pages on your system.

IRIX version 4.0.x uses the *msdosd* daemon to mount a floppy diskette. IRIX version 5 uses the *mediad* daemon to mount all types of devices, including floppy diskettes. Both operating system versions have the utilities *from_dos* and *to_unix* to convert files and add or remove Control-M characters.

To mount a diskette, insert the diskette into the disk drive.

msdosd

The *msdosd* daemon monitors a floppy disk drive. When a diskette is inserted, it is mounted automatically if it is in MS-DOS format. To specify a floppy disk drive, use the appropriate device special file in `/dev/rdisk`. High-density diskettes are mounted by using floppy devices with the *hi* suffix.

mediad

The *mediad* daemon monitors the removable media devices on a system. When a diskette is inserted, it is mounted if it makes sense for that media type and if there is a valid *filesystem* on it.

Sun running Solaris 2.3

PC/DOS-formatted diskettes can be mounted in two ways in the Solaris environment, either automatically or manually. For more information, print the appropriate man pages on your system.

Automatic diskette mounting instructions

If the volume manager is running, the PC/DOS diskette will be mounted automatically when the diskette is inserted in the disk drive.

To see if the volume manager is running, type the following command:

```
ps -ef | grep vold
```

To see a list of the diskette's contents, do the following:

1. Run OpenWindows.
2. Open the File Manager.
3. Insert the PC/DOS diskette.
4. Click the File button in the File Manager window, then click Check for Floppy.

The File Manager displays the files on the diskette. You can then copy the files to your hard disk, or send the files to the printer using the `lp print` command.

Manual diskette mounting instructions

If the volume manager is not running, you can manually mount the PC/DOS diskette. Type the following command:

```
mount -F pcfs device-special directory-name
```

Or, if the device name (`/dev/diskette - /pcfs pcfs`) is in your (`/etc/vfstab`) directory, type the following command to mount the diskette:

```
mount /pcfs
```

You can then copy the files to your hard disk, or send the files to the printer.

Obtaining the PC utility files

There are two ways to obtain the utility files if you cannot mount the PC/DOS diskette:

- Refer to page 9-6 for instructions on using the Internet to download Tektronix files.
- Refer to page 9-1 for instructions on using the Tektronix Bulletin Board Service (BBS).

Selecting Media and Image Options

This chapter explains how to do the following tasks:

- Selecting media sizes
- Selecting media trays
- Printing manual feed
- Selecting print quality
- Selecting image orientation
- Choosing the output (stack) order

Selecting media sizes

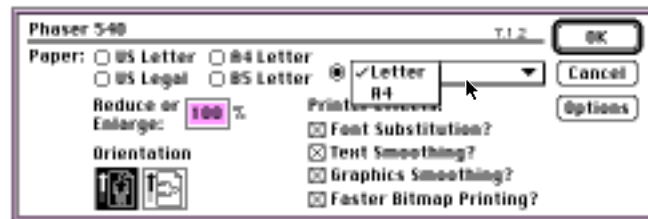
The Paper (Macintosh) or Paper Size (Windows) options in the Tektronix drivers let you choose the media size to print on. The drivers support both US and metric media sizes. The default is Letter (8.5 x 11 inches). Refer to the *Phaser 540 Color Printer User Manual* for more information on loading media trays.

Phaser 540 special media sizes

Media sizes	Dimensions	Image area
Letter	8.5 x 11 ins.	8.1 x 10.6 ins.
A4	210 x 297 mm	200 x 288 mm

Phaser 540 Macintosh driver (based on LaserWriter 7.1.2)

The Paper options are located in the Page Setup dialog box. The first four selections are the standard LaserWriter paper sizes (US Letter, US Legal, A4 Letter, and B5 Letter). The fifth Paper option field is a pop-up menu with special Tektronix media sizes.

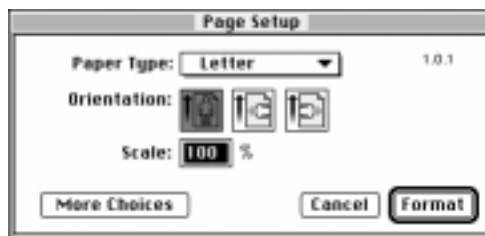


The printer's maximum image area is not available with the standard LaserWriter paper sizes; use the Tektronix page sizes in the pop-up menu to print the maximum image area. Refer to the table on page 5-2 for image area information. Refer to your Apple documentation for details on the other LaserWriter driver features in this dialog box.

Some applications override the Tektronix page sizes with their own extensions in this dialog box. These application-specific page sizes obtain page size and image area information about the Tektronix printer from the printer description files. Refer to "Printing from an application" on page 2-16 for information on these files.

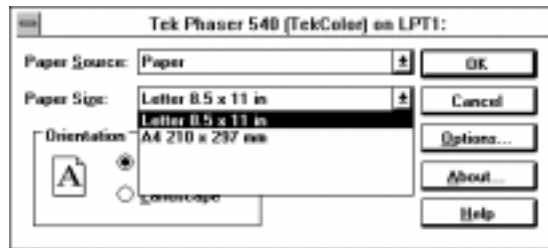
Phaser 540 GX Macintosh driver

The Paper options are located in the Page Setup dialog box.



Tektronix driver for Windows 3.1

The Paper Size options are located in the Printer Setup dialog box. All the sizes may not be available for every Windows application. For example, Excel 3.0 can print only on the sizes listed in its Printer Setup dialog box.



Selecting media trays

The printer comes standard with one paper tray for U.S. or metric paper sizes, depending on which tray you ordered. You can also add an optional Lower Tray Assembly, which holds two additional media trays. Refer to the *Phaser 540 Color Printer User Manual* for more information on optional printer accessories.

The tray selection options let you specify the type of media you want to print on, or specify which media tray you want to use if you have the optional Lower Tray Assembly installed. *You can select only one of these options.*

Options	Tektronix driver settings	Downloadable utility files	Printer's front panel settings
Upper Prints on paper or transparencies loaded in the upper media tray.	✓	✓	✓
Middle Prints on paper or transparencies loaded in the middle media tray.	✓	✓	✓
Lower Prints on paper or transparencies loaded in the lower media tray.	✓	✓	✓
Paper Prints on paper loaded in a paper tray.	✓	n/a	✓
Transparency Prints on transparencies loaded in a transparency tray.	✓	n/a	✓
Manual Feed Paper (Macintosh), <i>or</i> Manual Paper (Windows) Prints on paper loaded in the manual feed tray. See page 5-8 for details.	✓	n/a	✓
Manual Feed Transparency (Macintosh), <i>or</i> Manual Transparency (Windows) Prints on transparencies loaded in the manual feed tray. See page 5-8 for details.	✓	n/a	✓
AutoSelect Automatically switches between media trays of the same type.	n/a	✓	✓

Upper, Middle, and Lower selections

When you select the upper, middle, or lower tray, the printer picks media from the selected tray until it is empty. At that point, printing stops until you fill the selected tray.

Paper and Transparency selections

When you select Paper, the printer picks paper from a paper tray. When that tray is empty, the printer switches to another paper tray, if one is installed. Otherwise, printing stops until you fill the tray. If a paper tray is not installed, the printer waits until you install one before it prints the job.

The Transparency selection is similar to the Paper selection. In this case, the printer picks transparencies from a transparency tray. When that tray is empty, the printer switches to another transparency tray, if one is installed. Otherwise, printing stops until you fill the tray. If a transparency tray is not installed, the printer waits until you install one before it prints the job.

AutoSelect option

With AutoSelect, the printer picks media from the tray that contains the media type (paper or transparency) that you selected in the printer driver. When that tray is empty, the printer automatically picks from another tray of the same media type, if one is installed.

Note *Selecting a tray from the driver overrides the front panel setting or the utility file sent to the printer.*

Selecting media trays

Method	Platform	Location	Selections
Tektronix printer drivers	Macintosh	<ul style="list-style-type: none"> ■ Phaser 540 driver: The Tray Selection options are in the TekColor Options dialog box. See page 2-6 for instructions. ■ Phaser 540 GX driver: The Tray Selection options are in the TekColor printing extension. See page 8-20 for instructions. 	<ul style="list-style-type: none"> ■ Upper ■ Middle ■ Lower ■ Paper ■ Transparency
	Windows 3.1	<p>Tektronix driver for Windows 3.1 installed for the Phaser 540:</p> <p>The Paper Source options are in the Printer Setup dialog box.</p> <p>See page 3-9 for instructions. For details on the manual feed options, see page 5-8.</p>	<ul style="list-style-type: none"> ■ Upper Tray ■ Middle Tray ■ Lower Tray ■ Paper ■ Transparency
Downloadable utility files	Macintosh	<ul style="list-style-type: none"> ■ All Macintosh users: Use the <i>LaserWriter Utility</i> to download these files to the printer. See page 2-12 for instructions. ■ QuickDraw GX users: Use the Tektronix Phaser 540 GX driver to download these files to the printer. See page 8-13 for instructions. 	<ul style="list-style-type: none"> ■ <i>Use Upper Tray</i> ■ <i>Use Middle Tray</i> ■ <i>Use Lower Tray</i> ■ <i>Use Any Tray</i>
	PC/workstation	<ul style="list-style-type: none"> ■ Use the DOS COPY command to download these files to the printer. See page 3-20 for instructions. ■ Use the Windows File Manager to download these files to the printer. See page 3-21 for instructions. 	<ul style="list-style-type: none"> ■ <i>UPPRTRAY.PS</i> ■ <i>MIDDTRAY.PS</i> ■ <i>LOWRTRAY.PS</i> ■ <i>ANYTRAY.PS</i>
Printer's front panel	All	<p>Use the Printer Defaults menu.</p> <p>Refer to the <i>Phaser 540 Color Printer User Manual</i> for instructions.</p> <p>For details on the manual feed options, see page 5-8.</p>	<ul style="list-style-type: none"> ■ Default Tray:Upper ■ Default Tray:Middle ■ Default Tray:Lower ■ Default Tray:Paper ■ Default Tray:Transparency ■ Default Tray:AutoSelect

Printing manual feed

Options	Tektronix driver settings	Downloadable utility files	Printer's front panel settings
Manual feed paper	✓	n/a	Default Tray: Manual Feed Paper
Manual feed transparencies	✓	n/a	Default Tray: Manual Feed Transparency

You can use a Tektronix driver or the printer's front panel to print on paper or transparency film that you feed manually into the printer. Refer to the *Phaser 540 Color Printer User Manual* for instructions on loading media.

Note *Colors may not print as expected if the loaded media does not match the selected media type.*

To print with manual feed from a Tektronix printer driver, you may need to make selections in two different dialog boxes.

Phaser 540 Macintosh driver (based on LaserWriter 7.1.2)

1. Select the Manual Feed option in the Print dialog box.
2. Choose Paper or Transparency from the Manual Feed Media pop-up list in the TekColor Options dialog box.

Phaser 540 GX Macintosh driver

1. Select the Manual Feed option in the Print dialog box.
2. Select Paper or Transparency from the Manual Feed Media pop-up list in the TekColor printing extension dialog box.

Tektronix driver for Windows 3.1

Choose Manual Paper or Manual Transparency from the Paper Source pop-up list in the Printer Setup dialog box.

Manual feed printing

Method	Platform	Location	Selections
Tektronix printer drivers	Macintosh	<ul style="list-style-type: none"> ■ Phaser 540 driver: The Manual Feed Media options are in the TekColor Options dialog box. See page 2-6 for instructions. <hr/> <ul style="list-style-type: none"> ■ Phaser 540 GX driver: The Manual Feed Media options are in the TekColor printing extension. See page 8-19 for instructions. 	<ul style="list-style-type: none"> ■ Paper ■ Transparency
	Windows 3.1	<p>Tektronix driver for Windows 3.1 installed for the Phaser 540:</p> <p>The Paper Source options are in the Printer Setup dialog box. See page 3-9 for instructions.</p>	<ul style="list-style-type: none"> ■ Manual Paper ■ Manual Transparency
Printer's front panel	All	<p>Use the Printer Defaults menu. Refer to the <i>Phaser 540 Color Printer User Manual</i> for instructions.</p>	<ul style="list-style-type: none"> ■ Default Tray: Manual Feed Paper ■ Default Tray: Manual Feed Transparency

Selecting print quality

Options	Tektronix driver settings	Downloadable utility files	Printer's front panel settings
Fast Prints 300 x 300 dots-per-inch	✓	✓	✓
Standard or Enhanced Prints 600 x 600 dots-per-inch	✓	✓	✓

These three print quality modes affect the quality of printed images and the time they take to print. The higher quality modes, Standard and Enhanced, typically take longer to print than Fast mode:

- **Fast**
This is the fastest full-color mode and is useful for many applications. Images print at a resolution of 300 x 300 dots-per-inch.
- **Standard**
Images print at a resolution of 600 x 600 dots-per-inch. Standard is the default mode for the printer.
- **Enhanced**
This mode produces the best quality prints, but takes longer to process and print. Images print at a resolution of 600 x 600 dots-per-inch. To use this mode, you must have the 16-Mbyte optional memory kit installed in the printer. Without the additional memory installed, the printer uses Standard mode when you select Enhanced.

Selecting print quality

Method	Platform	Location	Selections
Tektronix printer drivers	Macintosh	<ul style="list-style-type: none"> ■ Phaser 540 driver: The Print Quality options are in the TekColor Options dialog box. See page 2-6 for instructions. ■ Phaser 540 GX driver: The Print Quality options are in the TekColor printing extension. See page 8-20 for instructions. 	<ul style="list-style-type: none"> ■ Fast ■ Standard ■ Enhanced
	Windows 3.1	<p>Tektronix driver for Windows 3.1 installed for the Phaser 540:</p> <p>The Print Quality options are in the Tektronix Printer Features dialog box. See page 3-11 for instructions.</p>	<ul style="list-style-type: none"> ■ Fast ■ Standard ■ Enhanced
Downloadable utility files	Macintosh	<ul style="list-style-type: none"> ■ All Macintosh users: Use the <i>LaserWriter Utility</i> to download these files to the printer. See page 2-12 for instructions. ■ QuickDraw GX users: Use the Tektronix Phaser 540 GX driver to download these files to the printer. See page 8-13 for instructions. 	<ul style="list-style-type: none"> ■ <i>Fast Quality</i> ■ <i>Standard Quality</i> ■ <i>Enhanced Quality</i>
	PC/workstation	<p>Use the DOS COPY command to download these files to the printer. See page 3-20 for instructions.</p> <p>Use the Windows File Manager to download these files to the printer. See page 3-21 for instructions.</p>	<ul style="list-style-type: none"> ■ <i>FAST.PS</i> ■ <i>STANDARD.PS</i> ■ <i>ENHANCED.PS</i>
Printer's front panel		<p>Use the Print Quality menu. Refer to the <i>Phaser 540 Color Printer User Manual</i> for instructions.</p>	<ul style="list-style-type: none"> ■ Print Quality:Fast ■ Print Quality:Standard ■ Print Quality:Enhanced

Selecting image orientation

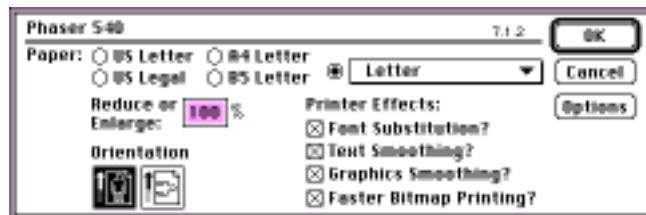
The Orientation option in the Tektronix Macintosh and Windows drivers lets you choose the direction in which your document is placed on the paper. Refer to the *Phaser 540 Color Printer User Manual* for more information on image placement and paper loading.

Select the orientation option you want to use for your prints:

- Portrait: Prints your image vertically on the media.
- Landscape: Prints your image horizontally on the media.

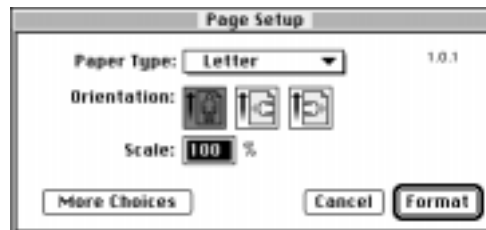
Phaser 540 Macintosh driver (based on LaserWriter 7.1.2)

The Orientation option is located in the Page Setup dialog box.



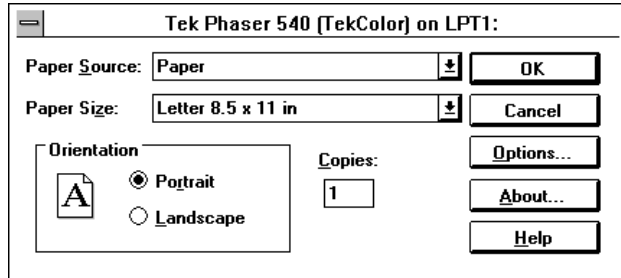
Phaser 540 GX Macintosh driver

The Orientation option is located in the Page Setup dialog box.



Tektronix driver for Windows 3.1

The Orientation option is located in the Printer Setup dialog box.



Choosing the output (stack) order

The Output Face Up check box in the Tektronix Macintosh and Windows drivers lets you specify whether your document prints face up or face down.

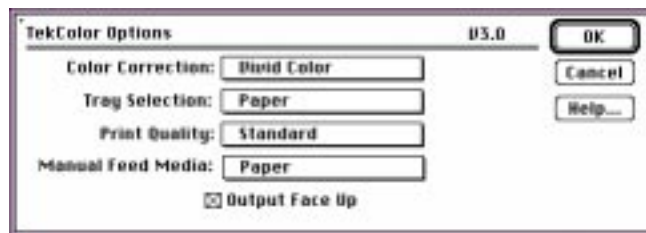
Note *When printing on transparencies, the printer automatically prints your document face up.*

- To print your document face up, stacking the pages so that the first page is on the bottom, check on the Output Face Up check box.
- To print your document face down, stacking the pages face down in numerical order, check off the Output Face Up check box.

Note *The default for the Output Face Up check box is on.*

Phaser 540 Macintosh driver (based on LaserWriter 7.1.2)

The Output Face Up option is located in the TekColor Options dialog box.



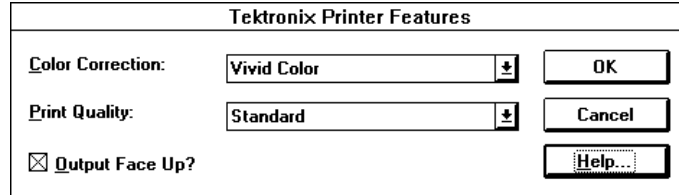
Phaser 540 GX Macintosh driver

The Output Face Up option is located in the Printer Driver Defaults dialog box, or the TekColor printing extension dialog box.



Tektronix driver for Windows 3.1

The Output Face Up option is located in the Tektronix Printer Features dialog box.



5 *Selecting Media and Image Options*

Using Color

TekColor Dynamic Correction

This chapter explains how to select colors and how to make color corrections on your prints. It also includes instructions for printing and using the color sampler charts provided on the diskettes shipped with the printer.

The TekColor color corrections provide simulations of different color devices:

- Vivid Color and Simulate Display options for business, engineering, and scientific imaging applications.
- Three printing press standards for graphic arts use.

These color corrections are driver-selectable from Macintosh and Windows applications using the Tektronix printer drivers. You can also set color corrections using the downloadable utility files or the printer's front panel.

Note *TekColor color corrections do not affect colors specified in the PostScript Level 2 international color standard CIE XYZ developed by the Commission Internationale de l'Eclairage (International Commission on Illumination).*

Working with color

You probably purchased your color printer with some idea of how you wanted to use color in your work. Whether you are producing color overhead transparencies for presentations, color handouts or reports, or design comps, there are a few things to keep in mind when using color. Colors look different depending on the size of the color area, the surrounding colors, and the lighting conditions.

- A large area of color looks more saturated (brighter) than a small area of the same color.
- A color looks brighter against a dark background than it does against a white background.
- Colors look different due to the background color or to the surrounding colors.
- The appearance of a color varies with the type and amount of light; for example, fluorescent lighting versus sunlight.

General guidelines

- Keep it simple and consistent.
- Select colors that look good together and that reinforce your message.
- Check your application for standard palettes to get you started.
- Use a color scheme of five or six shades and use the colors in a consistent manner throughout a series of images.
- Use color to highlight the most important information, such as a bar or pie segment in a chart or graph.
- Use color to show relationships between objects, such as a range of values. Objects with a similar meaning or value should be in similar colors.
- Use color as graphic elements in the design of newsletters, logos, and brochures.
- Avoid red and green combinations; these colors are hard for people with red/green color blindness to distinguish.

Using color in presentations

When used consistently, color in your presentations helps your audience remember key points. For example, graphics that represent your product should always appear in the same color. If you represent data graphically, be sure to put the most important data in red or the brightest, warmest color in your selected palette. Put the data you do not want to emphasize in cool colors.

Color design guidelines:

- Keep it simple; use up to seven colors maximum.
- Use color to indicate related elements.
- Use complementary colors for basic color schemes; use split complements for more subtle effects.
- Avoid blue/red and yellow/purple combinations.
- Use full-strength warm colors sparingly for emphasis.
- Use a cool, dark background color that won't compete with the foreground. Use foreground colors that stand out clearly against the background. Research indicates that blue is the most preferred background color, followed by black, gray, brown, red, green, and purple.

Text and font guidelines:

- For readability, use dark text on a lighter background, or light text on a darker background. For example, white or yellow text with a deep blue background.
- Use bold text for emphasis.
- Text sizes to use for overhead transparencies or slides:
 - Use a 40-point or larger font for titles.
 - Use 24- to 36-point fonts for body text.
 - Use 5 to 7 lines of text *maximum* per slide or overhead.

Selecting color corrections

Color printers and computer screens produce color differently. Printers use the subtractive primaries CMYK (cyan, magenta, yellow, and black), and produce color when light is reflected off the paper. Computers use the additive primaries RGB (red, green, blue) with a light-emitting CRT screen. The printer and the computer screen each have a different range of possible colors they can produce, with some overlap between them.

Software application packages specify color in different ways, for example, as CMYK or RGB, or they may give you a choice. Get to know your applications so you can get the most out of them.

The TekColor color correction options are available for a finer degree of control over colors. Since no single color correction option can address all uses, refer to the following table for the description that best fits your printing situation, and try the suggested color correction.

Printing objective or problem	Color correction to use	Where to find details
Overhead transparency presentations.	Vivid Color	page 6-8
Blue colors are printing too purple.	Vivid Color	page 6-8
Using PANTONE Colors.	None	page 6-17
Colors should match computer display screen.	Simulate Display	page 6-8
Colors should match a printing press.	Commercial Press Euroscale Press SWOP Press	page 6-9
Colors are too dark.	Simulate Display	page 6-8
Colors are washed out or faded.	Vivid Color	page 6-8
Print in gray scale.	Monochrome	page 6-10
Use printer's current color defaults.	Use Printer Setting	page 6-10
Use simple CMYK conversion.	Raw CMYK Colors	page 6-11
Use simple RGB conversion.	Raw RGB Colors	page 6-11

If your Phaser 540 printer is shared by other users on a network

Another user may use the utility files or the printer's front panel to change the printer's default color correction setting. If this situation occurs, the prints you make through a non-Tektronix driver may not print as expected. Refer to "Sharing the printer on a network" on page 9-20 for details on how the color corrections interact with the driver settings for either Tektronix or non-Tektronix drivers.

Application color corrections

Some applications perform color corrections to improve screen-to-printer color matching. The color correction options in the Tektronix drivers adjust colors in the printer after the application has performed its color corrections.

- If the application uses CIE (Commission Internationale de l'Eclairage) colors, the Tektronix corrections will not be applied.
- If you select a color correction option in the driver other than None, the selection may override some application features.
- If you try one of the driver's other options and the printed results are not what you expected, select the None option and try reprinting your image with the new setting.

If you are using a non-Tektronix driver

To use the color corrections with a non-Tektronix driver, use the downloadable utility files or the printer's front panel.

Color corrections table

Options	Tektronix driver settings	Downloadable utility files	Printer's front panel settings
None (turn off all color corrections)	✓	✓	✓
Vivid Color (print a truer blue)	✓	✓	✓
Simulate Display (simulate display screen colors)	✓	✓	✓
SWOP Press	✓	✓	✓
Euroscale Press	✓	✓	✓
Commercial Press (closely match printing press colors)	✓	✓	✓
Monochrome (print in gray scale)	✓	✓	✓
Use Printer Setting (use the printer's current color defaults)	✓	n/a	n/a
Raw CMYK	n/a	✓	n/a
Raw RGB (use simple color conversions)	n/a	✓	n/a

Note *A setting made in the driver overrides the front panel setting for prints made from the driver. However, the driver's Use Printer Setting option allows you to use the current front panel selection or downloaded utility file.*

Selecting color corrections

Method	Platform	Location	Selections
Tektronix printer drivers	Macintosh	<ul style="list-style-type: none"> ■ Phaser 540 driver: The Color Correction options are in the TekColor Options dialog box. See page 2-6 for instructions. 	<ul style="list-style-type: none"> ■ None ■ Vivid Color ■ Simulate Display ■ SWOP Press ■ Euroscale Press ■ Commercial Press ■ Monochrome ■ Use Printer Setting
	Windows 3.1	<ul style="list-style-type: none"> ■ Phaser 540 GX driver: The Color Correction options are in the TekColor printing extension. See page 8-20 for instructions. 	
Downloadable utility files	Macintosh	<ul style="list-style-type: none"> ■ Tektronix driver for Windows 3.1 installed for the Phaser 540: The Color Correction options are in the Tektronix Printer Features dialog box. See page 3-11 for instructions. 	<ul style="list-style-type: none"> ■ No Color Correction ■ Vivid Color ■ Simulate Display ■ SWOP Press ■ Euroscale Press ■ Commercial Press ■ Monochrome ■ Raw CMYK Colors ■ Raw RGB Colors
	PC/workstation	<ul style="list-style-type: none"> ■ All Macintosh users: Use the <i>LaserWriter Utility</i> to download these files to the printer. See page 2-12 for instructions. ■ QuickDraw GX users: Use the Tektronix Phaser 540 GX driver to download these files to the printer. See page 8-13 for instructions. 	
Printer's front panel		<ul style="list-style-type: none"> ■ Use the DOS COPY command to download these files to the printer. See page 3-20 for instructions. ■ Use the Windows File Manager to download these files to the printer. See page 3-21 for instructions. 	<ul style="list-style-type: none"> ■ <i>COMRCIAL.PS</i> ■ <i>DISPLAY.PS</i> ■ <i>EUROSCALE.PS</i> ■ <i>NOCORECT.PS</i> ■ <i>RAWCMYK.PS</i> ■ <i>RAWRGB.PS</i> ■ <i>SWOPRESS.PS</i> ■ <i>VIVDCOLR.PS</i> ■ <i>MONOCHRM.PS</i>
		<ul style="list-style-type: none"> ■ Use the TekColor Corrections menu. <p>Refer to the <i>Phaser 540 Color Printer User Manual</i> for instructions on using the front panel.</p>	

Turning off all color corrections

If you do not want to use any Tektronix color corrections, you can specify no corrections from a Tektronix driver, with utility files, or from the printer's front panel. Select no corrections when you are using applications that do their own color adjusting.

Printing a truer blue

The Vivid Color option makes printed blue appear less purple by reducing the amount of magenta used to print blue colors. Other colors in the cyan-blue-purple-magenta range are also adjusted to compensate for the adjusted blue. Colors in the red-orange-yellow-green range are not affected. This selection is good for making presentation graphics, such as overhead transparencies, and for bright-looking colors that don't need to match the screen's colors or printing press colors.

Vivid Color adjusts CMYK colors using a method that adds black to other components. This option prints more saturated (darker) colors and can be useful for printing overhead transparencies for presentations from some applications, such as CorelDRAW!. Use this option if you have specified a color in the CMYK system *and* the following conditions are true:

- The color has a black component.
- The color appears lighter than you expected when printed.

Simulating display colors

The Simulate Display option makes printed colors approximate the colors on a standard display screen. This selection should improve the screen-to-printer color accuracy for most applications that don't perform their own color corrections. This selection is best for applications that define colors as one of the following:

- *RGB* (red, green, blue).
- *HLS* (hue, lightness, saturation).
- *HSB* (hue, saturation, brightness).

Closely match printing press colors

There are three printing press color correction options. Each press option conforms to a different printing standard. Use a press option if you are previewing work for a four color job to be printed on a printing press. These options simulate a four-color commercial printing press, *not* solid spot colors, such as PANTONE Colors.

Note *If you are selecting PANTONE Colors in your application, use the None option; see page 6-17 for details. Also use the None option with other color management systems, such as EfiColor.*

Select a press option based on the type of commercial printing process you will be using for your final print job. Use the following list and table to help you determine when to use each option.

- **SWOP Press (Specifications for Web Offset Publications)**
This refers to specifications for color separation films and color proofing that are used to ensure the consistency of printed colors between different publications. This option is typically used in the U.S., and is targeted to match nominal values for this type of printing.
- **Commercial Press**
This option is typically used in the U.S., and is characterized to match commercial 3M Matchprint® proofs.
- **Euroscale Press**
This option is typically used in Europe, and is characterized to match the *Pantone Process Color System Guide, Euroscale Edition*.

Press mode option	Inks	Base (paper)	Target match
SWOP Press	SWOP/soy	publication	Specification for Web Offset Publications (Tends to be high-volume, web press printing.)
Commercial Press	commercial	commercial	Commercial pre-press proofs (Tends to be high-quality, sheet-fed printing.)
Euroscale Press	Euroscale	publication	<i>Pantone Process Color System Guide, Euroscale Edition</i>

Printing in gray scale

The Monochrome option prints your color image as a monochrome gray scale (shades of gray between black and white). Use this option to print page masters for photocopying in black-and-white.

Using the printer's current color defaults

The Use Printer Setting option is available only in the Tektronix Macintosh and Windows drivers. This option sends no color correction to the printer. It uses the current default in the printer to process colors for printing. The printer's defaults can be one of the following:

- Any option selected in the TekColor Corrections menu on the printer's front panel.
- One of the color correction utility files sent to the printer.

Using simple color conversions

The following utility files use Adobe's standard color conversions to tell the printer what type of output device you want it to simulate:

- *Raw CMYK Colors (RAWCMYK.PS)*
Converts all colors (CMYK, RGB, grays) to CMYK colors. Use this file if your application specifies colors as CMYK (cyan, magenta, yellow, and black). This file lets you control the CMYK output of the printer's colors without any TekColor color corrections.

- *Raw RGB Colors (RAWRGB.PS)*
Converts all colors (CMY, CMYK, grays) to RGB colors. Use this file if your application specifies colors as RGB (red, green, and blue). This file lets you control the CMY output of the printer's colors without any TekColor color corrections.

Printing the color sampler charts

You can select colors within an application using color component values. Which color chart you print and use depends on *how the application you are using selects color*. Refer to the application's documentation for information on color selection, then print one of the charts listed in the table below.

- The Macintosh files are located in the compressed *Phaser 540 Samplers.sea* archive file on the Macintosh Driver and Printer Utilities diskette; refer to page 2-11 for decompressing instructions.
- The PC files are located in the *SAMPLERS* directory on the Tektronix Windows 3.1 Driver and Printer Utilities diskette.

Color sampler chart files

Color sampler chart	Number of printed pages	Macintosh file name	PC file name
Print a sample of CMYK colors	18	<i>CMYK Sampler</i>	<i>CMYK.PS</i>
Print a sample of RGB colors	12	<i>RGB Sampler</i>	<i>RGB.PS</i>
Print a sample of HSB colors	12	<i>HSB Sampler</i>	<i>HSB.PS</i>
Print a sample of PANTONE Colors	46	<i>PANTONE-Tek Phaser 540</i>	<i>PANT540.PS</i>

The color sampler charts are made up of areas of color with each color's components listed below it. Each color sampler chart is several pages long; they are printed in panels that can be connected to form a wall chart or placed in a binder for easy reference.

Before you print the CMYK, RGB, and HSB color charts

To match colors on the charts to colors selected within an application, use the same printer color correction to print the charts that you are going to use when selecting and printing these colors within an application.

For example, if you are going to print from an application using the driver's Vivid Color option, print the color chart with the *Vivid Color* (*VIVDCOLR.PS*) utility file or with the Vivid Color (TekColor Corrections menu) front panel selection. Or, if you are not using a Tektronix driver, use the same utility file or front panel setting to print the chart and to print from an application.

The following table lists the driver color correction settings with their corresponding utility files or front panel settings.

Driver, utility file, and front panel settings

Driver setting (Macintosh and Windows)	Macintosh utility file name	PC utility file name	Printer's front panel setting (TekColor Correction menu)
Simulate Display	Simulate Display	<i>DISPLAY.PS</i>	Display
Vivid Color	Vivid Color	<i>VIVDCOLR.PS</i>	Vivid Color
Use Printer Setting	(any color correction utility file)**	(any color correction utility file)**	(any front panel color setting)**
Commercial Press	Commercial Press	<i>COMRCIAL.PS</i>	Commercial
Euroscale Press	Euroscale Press	<i>EUROSCAL.PS</i>	Euroscale
SWOP Press	SWOP Press	<i>SWOPRESS.PS</i>	SWOP
None	No Color Correction	<i>NOCORECT.PS</i>	None

** Use the same color correction to print the chart and later to print the colors from an application.

Printing the CMYK, RGB, and HSB color charts

Macintosh users

1. Follow the instructions on page 2-11 to decompress the *Phaser 540 Samplers.sea* and the *Phaser 540 Utilities.sea* archive files from the Macintosh Driver and Printer Utilities diskette onto your hard disk.
2. Select the appropriate printer in the Chooser.
3. Determine which front panel selection or color correction utility file you want to use by examining the table on page 6-4.
4. Make the appropriate selection on the printer's front panel, or use the *LaserWriter Utility* to send the appropriate utility file to the printer. For instructions on using the *LaserWriter Utility* to download utility files, see page 2-12.
5. To print a color sampler chart, use the *LaserWriter Utility* to download the desired color sampler chart file to the printer; see page 2-12 for instructions.
6. Select colors within an application using the colors on the chart.
7. Print your document using one of the following methods:
 - If you are printing from a Tektronix driver
Print your document using the Tektronix printer driver with the same color correction option selected in the driver that you used to print the chart. Any other color correction selection in the driver can cause the colors to print differently.
 - If you are not using a Tektronix driver
Print your document with the same front panel color correction selected or with the same color correction utility file sent to the printer that you used to print the chart.

PC and workstation users

1. Copy the color sampler chart files that you want to use from the *SAMPLERS* directory on the Tektronix Windows 3.1 Driver and Printer Utilities diskette onto your computer's hard disk. You may want to place these files in a *Utilities* directory. Or, you can download these files directly from the diskette.
2. Determine which front panel selection or color correction utility file you want to use by examining the table on page 6-4.
3. Make the appropriate selection on the printer's front panel, or send the appropriate utility file to the printer. For instructions on downloading utility files to the printer, see pages 3-20 and 3-21.
4. Use one of the following methods to print the color sampler charts:
 - PC users: Use the DOS COPY command or the Copy command in Windows File Manager to send the file to the printer. See page 3-20 and page 3-21 for details.
 - Workstation users: Send the color sampler chart file to the printer as you would any PostScript file.
5. Select colors within an application using the colors on the chart.
6. Print your document using one of the following methods:
 - If you are printing from a Tektronix driver
Print your document using the Tektronix printer driver with the same color correction option selected in the driver that you used to print the chart. Any other color correction selection in the driver can cause the colors to print differently.
 - If you are not using a Tektronix driver
Print your document with the same front panel color correction selected or with the same color correction utility file sent to the printer that you used to print the chart.

Printing the PANTONE Color chart

Note *Do not use any color corrections in a driver, or with a downloadable utility file, or from the printer's front panel, when printing the PANTONE Color chart or when printing PANTONE Colors from an application. Using color corrections causes the PANTONE Colors to print incorrectly.*

The *PANTONE-Tek Phaser 540 (PANT540.PS)* file prints a PANTONE Color sampler chart (about 46 pages in length). Use the chart to select colors within an application that allows you to specify PANTONE Colors.

Macintosh users

1. Follow the instructions on page 2-11 to decompress the *Phaser 540 Samplers.sea* and the *Phaser 540 Utilities.sea* file from the Macintosh Driver and Printer Utilities diskette onto your hard disk.
2. Select the appropriate printer in the Chooser.
3. Select the None option in the TekColor Corrections menu on the printer's front panel, or send the *No Color Correction* utility file to the printer.
4. To print the chart, use the *LaserWriter Utility* to download the *PANTONE-Tek Phaser 540* file to the printer (see page 2-12 for instructions).
5. Select PANTONE Colors within an application using the colors on the chart.
6. Print your document using one of the following methods:
 - If you are printing from a Tektronix driver: Print your document with the None option selected. Any other color correction selection in the driver causes the PANTONE Colors to print differently.
 - If you are not using a Tektronix driver: Print your document with the None option selected in the TekColor Corrections menu on the printer's front panel, or send the *No Color Correction* utility file to the printer.

PC and workstation users

1. Copy the *PANT540.PS* sampler file from the *SAMPLERS* directory on the Tektronix Windows 3.1 Driver and Printer Utilities diskette onto your computer's hard disk. You may want to place this file in a *Utilities* directory. Or, you can download this file directly from the diskette.
2. Select the None option in the TekColor Corrections menu on the printer's front panel, or send the *NOCORECT.PS* file to the printer.
3. Use one of the following methods to print the PANTONE Color chart:
 - PC users: Use the DOS COPY command or the Copy command in Windows File Manager to send the *PANT540.PS* sampler file to the printer. See page 3-20 and page 3-21 for details.
 - Workstation users: Send the *PANT540.PS* file to the printer as you would any PostScript file.
4. Select PANTONE Colors within an application using the colors on the chart.
5. Print your document using one of the following methods:
 - If you are printing from a Tektronix driver: Print your document with the None option selected. Any other color correction selection in the driver causes the PANTONE Colors to print differently.
 - If you are not using a Tektronix driver: Print your document with the None option selected in the TekColor Corrections menu on the printer's front panel, or send the *NOCORECT.PS* utility file to the printer.

Using Fonts

This chapter explains how to use fonts and print a font sampler in the Macintosh and PC environments.

Note *For general information on fonts, request a document catalog from HAL or EuroHAL, the Tektronix automated fax systems. Refer to page 9-2 for instructions on using these systems.*

Macintosh fonts

Using Macintosh screen fonts

Note *If you already have these fonts installed on your computer, you don't need to install them again.*

The *Phaser Screen Fonts.sea* archive file on the Macintosh Driver and Printer Utilities diskette contains screen fonts in the following typeface families: Courier, Helvetica, Helvetica Condensed, Helvetica Narrow, ITC Avant Garde Gothic, ITC Bookman, ITC Zapf Chancery, ITC Zapf Dingbats, New Century Schoolbook, Palatino, Symbol, and Times.

You need to decompress and install the screen fonts on your computer if you want to see the printer's resident typefaces on the Macintosh screen. If you select a font the printer doesn't have, the Macintosh creates a representative font for printing.

Decompressing the fonts

Note *Do not decompress fonts directly into the System Folder; they must be properly installed after they have been decompressed onto your hard disk.*

1. Insert the Macintosh Driver and Printer Utilities diskette into your computer's disk drive.
2. Double-click on the *Phaser ScreenFonts.sea* archive file.
3. At the Self-Extracting Archive dialog box, click Continue.
4. In the dialog box, select the drive where you want the decompressed fonts saved.
5. At the `Install software as:` prompt, you are asked to name the folder where you want the decompressed fonts to reside. Use the default folder name listed in the edit box, or type in the name you want for the folder. Then click Save.
6. At the Installation was successful dialog box, click Quit. The decompressed fonts are saved in the folder you specified.

Installing the decompressed fonts

System 6.0.7 users

Use the Font/DA Mover (located on your Apple system software diskettes) to install the fonts you want from the Phaser Screen Fonts suitcase.

System 7.0, and later, users

Drag the fonts you want from the Phaser Screen Fonts suitcase to the *closed* System Folder icon. At the alert message, click OK; the fonts are automatically installed in the proper place.

Select the printer font you want to use within an application and see the same font on the screen.

Downloading fonts to the printer from a Macintosh

The fonts resident in the printer are stored in the printer as outlines and are always available for printing. The PostScript interpreter in the printer can also accept and store additional fonts known as downloadable fonts. If you want to print PostScript outline fonts that are not built into the printer, you can transfer or download outline fonts from your computer to the printer. Downloading fonts saves print time if you plan to print several documents or a large document using those fonts.

When you download a font, it is stored in the printer's memory. You can download as many outline fonts as the printer's memory allows.

1. If you have not decompressed the *Phaser 540 Utilities.sea* archive file on the Macintosh Driver and Printer Utilities diskette, follow the instructions on page 2-11 to decompress this file.
2. Select the appropriate printer in the Chooser.
3. Locate the *LaserWriter Utility* in the folder on your hard disk containing decompressed utility files.
4. Double-click on the LaserWriter Utility icon.
5. To send fonts to the printer, use the Download Fonts command in the File menu.

(To send PostScript files to the printer, refer to "Using the LaserWriter Utility to download files to the printer" on page 2-12.)

6. Select the font, then click Open. The font is sent to the printer. The font remains available until the printer is reset or switched off.

Printing a font sampler from a Macintosh

You can print a sample of the printer's resident fonts by downloading the *Fonts Sampler* utility file to the printer.

1. If you have not decompressed the *Phaser 540 Utilities.sea* archive file and the *Phaser 540 Samplers.sea* archive file on the Macintosh Driver and Printer Utilities diskette, follow the instructions on page 2-11 to decompress these files.
2. Select the appropriate printer in the Chooser.
3. Locate the *LaserWriter Utility* in the folder on your hard disk containing decompressed utility files.
4. Double-click on the LaserWriter Utility icon.
5. Select Download PostScript File from the Utilities menu.
6. Select the *Fonts Sampler* file in the folder on your hard disk containing decompressed utility files and click Open.
7. At the `Save PostScript output as:` prompt, you are asked to supply a file name for saving printer output. Use the default name given in the edit box or type in a new name. Then click Save to send the file to the printer.
8. If no output is returned by the printer, the *LaserWriter Utility* displays a dialog box. Click OK in the dialog box.

PC fonts

Using fonts with Windows

Before printing, you need to make sure the fonts specified in your document are installed in the printer or set up correctly in Windows. If you request a font in an application that is not resident in the printer or is not installed properly in Windows, the text is printed in the Courier typeface.

To use fonts that are not resident in the printer, do one of the following:

- Use a font downloader supplied with your font package to download the desired font to the printer.
- Edit your *WIN.INI* file so that the Tektronix Windows driver automatically downloads the fonts you want as part of a print job. Refer to your Microsoft Windows documentation for details on this procedure.

Some font packages automatically update the PostScript port entries in your *WIN.INI* file when you reinstall the fonts. Refer to the font package's documentation for instructions.

For more information on using fonts with Windows, check the HAL or EuroHAL document catalog for articles. Refer to page 9-2 for instructions on using Tektronix's automated fax systems.

Downloading fonts to the printer from a PC

The fonts resident in the printer are stored in the printer as outlines and are always available for printing. The PostScript interpreter in the printer can also accept and store additional fonts known as downloadable fonts. If you want to print PostScript outline fonts that are not built into the printer, you can transfer or download outline fonts from your computer to the printer. Downloading fonts saves print time if you plan to print several documents or a large document using those fonts.

When you download a font, it is stored in the printer's memory. You can download as many outline fonts as the printer's memory allows.

A font downloader is an interactive program that lets you transfer Adobe fonts and other PostScript files to the printer. Check your font package for a downloader application. Or, check the Tektronix Bulletin Board Service (BBS) for a PC font downloader; refer to page 9-1 for instructions.

Printing a font sampler from a PC

You can print a sample of the printer's resident fonts by downloading the *FONT.S* utility file to the printer.

1. Locate the *FONT.S* file in the *SAMPLERS* directory on the Tektronix Windows 3.1 Driver and Printer Utilities diskette.
2. Copy the file to your hard disk, or use the file from the diskette.
3. Use one of the following methods to send the file to the printer:
 - PC users: Use the DOS COPY command or the Copy command in Windows File Manager to send the file to the printer. See page 3-20 and page 3-21 for details.
 - Workstation users: Send the file to the printer as you would any PostScript file.

Using the Phaser 540 GX Driver

If you are using Apple System Software 7.5 and QuickDraw GX, use the Phaser 540 GX driver to print to your Phaser 540 printer.

- The Phaser 540 GX driver works with QuickDraw GX and non-QuickDraw GX applications.
- QuickDraw GX doesn't work with non-QuickDraw GX printer drivers. To print from non-QuickDraw GX applications using the Tektronix Phaser 540 driver (based on the LaserWriter 7.1.2. printer driver) described in Chapter 2, you must disable QuickDraw GX. See page 8-22 for instructions on disabling QuickDraw GX.

System requirements

Note *You must have an optional Phaser Share Card installed in the printer before installing the driver.*

The Tektronix Phaser 540 GX printer driver requires the following hardware and software:

- An Apple Macintosh II computer, or later
- At least 8 Mbytes of memory
- System Software version 7.5 and QuickDraw GX

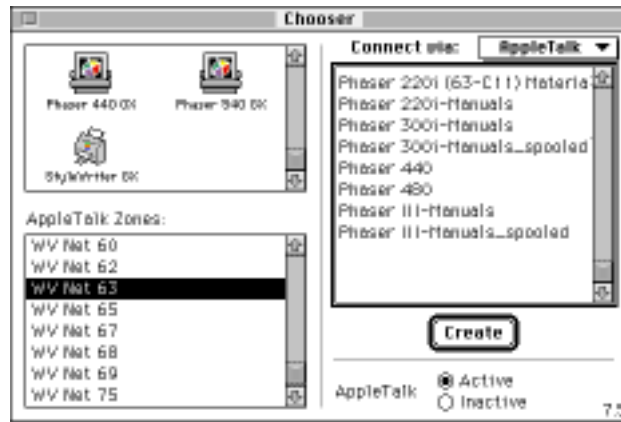
Installing the QuickDraw GX Phaser 540 printer driver

1. Make sure your Macintosh is turned on with System Software version 7.5 and QuickDraw GX installed.
2. Insert the Macintosh Driver and Printer Utilities diskette into the disk drive.
3. When the diskette appears on the desktop, it should be open showing the icons inside.
4. Drag the Phaser 540 GX driver icon from the diskette to the closed *System Folder* icon on your Macintosh hard disk. At the alert message, click OK to automatically install the driver in the *Extensions* folder.
5. Store the printer diskette in a safe place.

Note Before you can print, you need to create a desktop printer; proceed to “Creating a desktop printer” on page 8-3 for instructions.

Creating a desktop printer

1. Select Chooser from the Apple menu.



2. Click the Phaser 540 GX printer driver icon on the left side of the Chooser. A list appears with the printers available on your network. (If the printer driver icon does not appear, Restart your Macintosh, and repeat the printer driver installation procedure; also check the cable connections on your computer and printer.)
3. In the Connect via field's pop-up menu, select your printer's communication method:
 - The AppleTalk option is the standard network connection.
 - The Servers option is used to select a shared desktop printer; see page 8-15 for details.
4. Click on your printer in the list on the right side of the Chooser.

5. If you want to rename the printer listed in the Chooser, do so *before* creating any desktop printers. If you rename the printer in the Chooser, any desktop printers referring to that printer will not work, and must be removed to the Trash and re-created.

See page 2-15 for instructions on using the *LaserWriter Utility* to rename the printer.

6. Click the Create button to create a desktop printer. An icon of the printer appears on the desktop with the same name as the printer selected in the Chooser.
7. Close the Chooser by clicking its close box.

Using a desktop printer

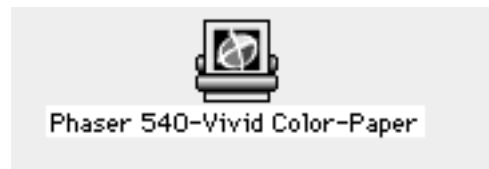
You can create more than one desktop printer of the same physical printer. Then, set up each desktop printer with different print modes or options that you use frequently, and give each desktop printer a descriptive name. This allows you to print quickly to a specific printer with your favorite options already selected.

Setting up unique desktop printers

1. Create a desktop printer using the instructions on page 8-3.
2. Select (highlight) a desktop printer icon. The Printing menu appears in the menu bar at the top of the Macintosh screen.



3. Use the Printer Driver Defaults command in the Printing menu to select options for individual desktop printers. See page 8-10 for details.
4. To rename the desktop printer, highlight the icon on the desktop and type a new name. (Renaming a desktop printer has no effect on the printer name in the Chooser.)



Printing with a desktop printer

If you are using GX-aware applications

- Select any desktop printer in the Print dialog box.
- Drag a document onto a desktop printer icon. The application corresponding to the document opens, prints the document, and then quits.

If you are using non-GX-aware applications

- Print to the *default* desktop printer using the Print command on the File menu.
- Drag a document onto a desktop printer icon. The application corresponding to the document opens the Print dialog box and waits for you to click Print. After printing the document, the application quits.

Using the Printing menu

Most of the commands in the Printing menu are standard QuickDraw GX driver commands, and are documented by Apple (see the Macintosh Guide on-line document for details). The last group of commands in this menu are printer-specific.



Controlling printing

Use the Start Print Queue and Stop Print Queue commands in the Printing menu to control the print queues on individual desktop printers.

1. Select (highlight) a desktop printer icon.
2. From the Printing menu, select the appropriate command.

Designating a default desktop printer

1. Select (highlight) a desktop printer icon.



2. From the Printing menu, select Set Default Printer. A check-mark appears next to the command, and a bold outline appears around the desktop printer icon.



Controlling input trays

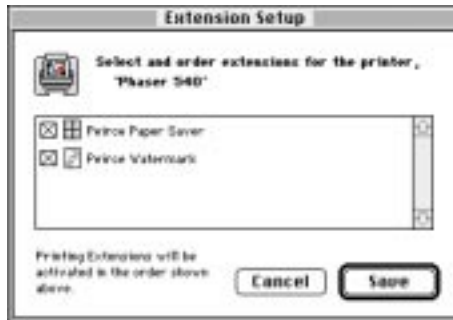
If you select the Input Trays command in the Printing menu, you will see the following message appears:

Please use the Printer Driver Defaults command to specify media options for this printer.

Click OK to continue, then use the Printer Driver Defaults command in the Printing menu to select media trays.

Using printing extensions

Use the Extension Setup command in the Printing menu to specify which third-party printing extensions you want enabled for the currently selected desktop printer. For example, Print Time and Paper Match are part of the QuickDraw GX software and are always available. By default, all printing extensions are enabled.



1. Select (highlight) a desktop printer icon.
2. Select Extension Setup from the Printing menu.
3. Make selections as desired.

Selecting printing options

Use the Printer Driver Defaults command in the Printing menu to set default options for the selected desktop printer. This dialog box includes the color corrections, tray selections, and print quality modes.



Note *The printer defaults dialog box is also available through the Print command on the File menu for QuickDraw GX-aware applications.*

Phaser 540 Defaults	Options	Where to find details
Color Correction	<ul style="list-style-type: none"> ■ None ■ Vivid Color ■ Simulate Display ■ SWOP Press ■ Euroscale Press ■ Commercial Press ■ Monochrome ■ Use Printer Setting 	Chapter 6
Tray Selection	<ul style="list-style-type: none"> ■ Upper Tray ■ Middle Tray ■ Lower Tray ■ Paper ■ Transparency 	Chapter 5
Print Quality	<ul style="list-style-type: none"> ■ Fast ■ Standard ■ Enhanced 	Chapter 5
Manual Feed Media	<ul style="list-style-type: none"> ■ Paper ■ Transparency 	Chapter 5

Downloading printer utilities

Use the Printer Utilities command in the Printing menu to download printer utility files to the selected desktop printer. This command cannot be used on a shared printer, except by the Macintosh hosting the shared printer; the command is not visible in the menu.

1. Select (highlight) a desktop printer icon.
2. Select Printer Utilities from the Printing menu.
3. In the Utility pop-up menu, select the file you want downloaded to the printer, then click OK.



4. If you see an alert message, click OK or Cancel.

The utilities in the following table can be downloaded to the printer using the Printer Utilities command in the Printing menu.

Utilities	Where to find details
<ul style="list-style-type: none"> ■ Print Startup Page ■ Print Configuration Page 	Appendix A
<ul style="list-style-type: none"> ■ Print CMYK Sampler ■ Print HSB Sampler ■ Print RGB Sampler 	Chapter 6
<ul style="list-style-type: none"> ■ Print Fonts Sampler 	Chapter 7
<ul style="list-style-type: none"> ■ Disable Startup Page ■ Enable Startup Page 	Appendix A
<ul style="list-style-type: none"> ■ Disable SysStart Job ■ Enable SysStart Job 	Appendix A
<ul style="list-style-type: none"> ■ Download Tek Error Handler ■ Download Setscreen Patch 	Chapter 9
<ul style="list-style-type: none"> ■ Initialize Printer Disks ■ Format Printer Disks 	Appendix B
<ul style="list-style-type: none"> ■ Reset Printer 	Chapter 9
<ul style="list-style-type: none"> ■ Use Lower Tray ■ Use Middle Tray ■ Use Upper Tray ■ Use Any Tray 	Chapter 5
<ul style="list-style-type: none"> ■ Use Fast Quality ■ Use Standard Quality ■ Use Enhanced Quality 	Chapter 5
<ul style="list-style-type: none"> ■ Enable No Color Corrections ■ Enable Vivid Color ■ Enable Simulate Display ■ Enable Commercial Press ■ Enable Euroscale Press ■ Enable SWOP Press ■ Enable Monochrome ■ Enable Raw RGB Colors ■ Enable Raw CMYK Colors 	Chapter 6

Download PostScript files

Use the Send PostScript File command in the Printing menu to download PostScript files to the selected desktop printer. This command cannot be used on a shared printer, except by the Macintosh hosting the shared printer; the command is not visible in the menu.



1. Select (highlight) a desktop printer icon.
2. Select Send PostScript File from the Printing menu.
3. Select the PostScript file you want to download.
4. Click Open to send the file to the printer.

About shared printers

You can share a desktop printer in the same way you share files, folders, or volumes, with the Sharing command on the File menu. Both the host and client computers must have a copy of the same printer driver.

Setting up a shared printer

1. Create a desktop printer according to the instructions on page 8-3.
2. Highlight the desktop printer icon you want to share.



3. Select Sharing from the File menu.
4. Click the check box to turn on Share this printer.



5. Click the close box.
6. At the alert message, click Save.
7. The desktop printer's icon changes to reflect the change in status to a shared printer.



Using a shared printer

If you want to use a printer hosted by another user's computer, do the following:

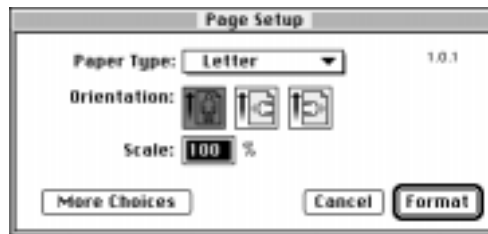
1. Open the Chooser from the Apple menu.
2. Click the Phaser 540 GX printer driver icon on the left side of the Chooser.
3. In the Connect via field's pop-up menu, select Servers.
4. The list of printers in the Chooser changes to show only shared printers. Click on the shared printer you want to use.
5. Close the Chooser.

Printing from QuickDraw GX-aware applications

If you are using QuickDraw GX applications with the Phaser 540 GX driver, the Page Setup and Print dialog boxes look different from the standard LaserWriter 7.1.2 dialog boxes described in Chapter 2.

Using the Page Setup command

When you select Page Setup from the File menu, the following dialog box appears:



When you click the More Choices button, the dialog box expands to show the following options:



Page Setup options

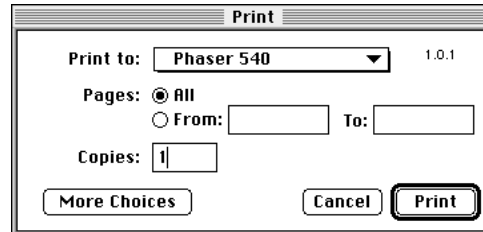
- **Row of icons**
The scrollable icon list on the left side of the dialog box represents printing extensions that are available to the printer driver. When selected, the General icon displays the normal Page Setup options. Select another icon to see a new dialog of options.

Refer to Apple's QuickDraw GX documentation for instructions on installing printing extensions; refer to page 8-20 to use the Extensions Setup command in the Printing menu to enable installed printing extensions.

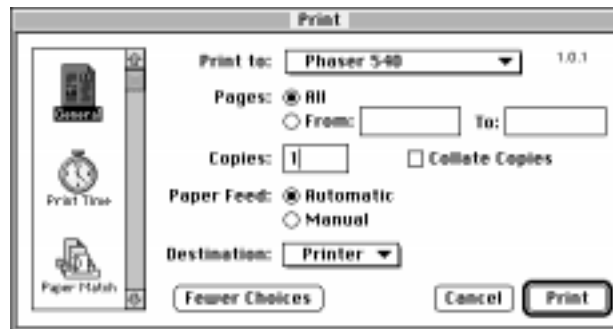
- **Paper Type**
This is a list of page sizes available for the selected printer. Refer to page 5-2 for page size details.
- **Orientation**
This is a standard driver option. Refer to page 5-12 for image orientation details.
- **Scale**
This is a standard driver option.
- **Format for**
This pop-up menu allows you to select a different desktop printer for formatting your document.

Using the Print command

When you select Print from the File menu, the following dialog box appears:



When you click the More Choices button, the dialog box expands to show the following options:



Print dialog box options

- **Row of icons**
The scrollable icon list on the left side of the dialog box list represents printing extensions that are available to the printer driver. When selected, the General icon displays the normal Print options. Select another icon to see a new set of options. Print Time and Paper Match are part of the QuickDraw GX software and are always available.
- The rest of the options in this dialog box are standard driver options described in Apple documentation.
- **Paper Feed: Automatic or Manual**
When printing on manually-fed media, you need to select Manual in this dialog box, *and* select the appropriate Manual Feed Media option in the TekColor printing extension described on page 8-20.

Using the TekColor printing extension

Select the TekColor icon at left of the dialog box to see printer options:



Note This dialog box is similar to the one that appears when you select *Printer Driver Defaults* from the *Printing* menu; refer to page 8-10 for details.

The default settings in this dialog box reflect the defaults for the selected desktop printer. With most applications, you can change the printing options and save those options with each document.

Using the Paper Match printing extension

This dialog box lets you specify paper trays. A paper tray selection in the Paper Match printing extension overrides the tray selection choice in the TekColor printing extension. You should use the TekColor printing extension for selecting *all* printing options.

Printing from non-QuickDraw GX-aware applications

If you are using non-QuickDraw GX applications with the Phaser 540 GX driver, the Page Setup and Print dialog boxes look similar to the standard LaserWriter 7.1.2 dialog boxes described in Chapter 2. However, unlike the dialog boxes described in Chapter 2, these dialog boxes have no printer-specific options, such as TekColor color corrections. These dialogs reflect the selections made in the default desktop printer. You cannot change these printer settings from the application, but you can change them by selecting (highlighting) the default desktop printer and using the Printer Driver Defaults command in the Printing menu. You can also change the default desktop printer before you change printing selections.

Changing a desktop printer's default selections

1. Click to highlight the default desktop printer.



2. From the Printing menu, select Printer Driver Defaults. The following dialog box appears:



3. Make the desired printer selections, then click OK.
4. Return to your application.

Changing the default desktop printer

1. Highlight the desktop printer that you want to set as the default.
2. From the Printing menu, select Set Default Printer. A check-mark appears next to the command, and a bold outline appears around the desktop printer icon.

Disabling QuickDraw GX

You may want to disable QuickDraw GX when printing from some non-QuickDraw GX applications so you can use the Phaser 540 printer driver (based on the LaserWriter 7.1.2 driver) described in Chapter 2.

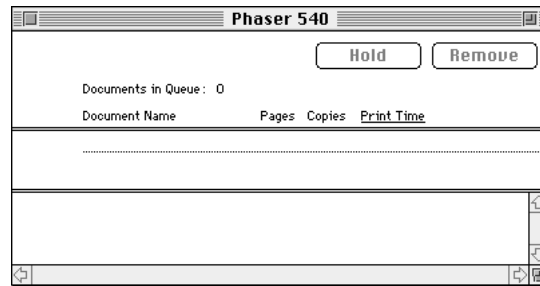
1. Open the Extensions folder inside the System Folder.
2. Drag the QuickDraw™ GX extension onto the desktop.
3. Select Restart from the Special menu.

Any desktop printers created before you disabled QuickDraw GX will have an “X” drawn through the icons. These desktop printers remain unavailable for use until QuickDraw GX is re-enabled.

Viewing printer status

Once you send a print to a desktop printer, you can monitor the status of the print job in the Printer Status dialog box. There are two ways to open the Printer Status dialog box:

- Select (highlight) the appropriate desktop printer icon, then select Open from the File menu.
- Double-click the appropriate desktop printer icon.



Troubleshooting

Getting help

Using the Tektronix Bulletin Board Service

The Tektronix Bulletin Board Service (BBS) is available for direct downloading of the latest versions of printer drivers, utilities, and files. If you have a Macintosh or PC, communication software, and modem, you can call the service and use the menus to locate and download the files you want.

To access the BBS 24 hours a day, seven days a week, call (503) 685-4504.

For a detailed instruction guide on system requirements, terminal settings, protocol, modem, how to connect to our BBS, and how to download files, request a document catalog from HAL or EuroHAL, the Tektronix automated fax systems. See page 9-2 for instructions on using these systems.

Reaching the Technical Support staff

If your problem is still not resolved after trying the suggestions in this chapter, call the Tektronix Technical Support Hotline in the United States from 6 AM to 5 PM PST, Monday through Friday, at 1-800-835-6100. Outside the U.S., contact your reseller or local Tektronix office.

Also, refer to the HAL catalog for articles on using the printer, specific applications, and computing environments; see page 9-2 for instructions on using HAL and EuroHAL.

Using the automated fax systems

As an alternative to using the Customer Support Hotline, and to provide up-to-date information quickly, Tektronix has set up HAL (Highly Automated Library) and EuroHAL, two interactive, automated fax systems. These automated fax systems provide Macintosh, PC, and workstation users with the latest technical hints and tips (like color matching), solutions to common technical problems, and application notes (like CorelDRAW! and QuarkXPress).

You may call HAL or EuroHAL from anywhere in the world. The fax systems are available 24 hours a day, seven days a week.

Use HAL to order a catalog or individual documents in the U.S.A. and Canada

If you have a fax machine and a touch-tone voice telephone, you can order a HAL catalog listing all the information offered by HAL.

Call (503) 682-7450 (direct) or, in the U.S. and Canada, call 1-800-835-6100 (at the prompt, choose the option for technical documentation via fax).

Note *Before ordering documents from HAL, order a catalog listing the numbers of available documents. You may want to replace your catalog periodically, since the system is often updated.*

1. Before you call, write down the area code and telephone number for your fax machine. HAL will ask you to key this number using the keypad on your voice telephone.

If you are calling from outside the United States or Canada, you'll need to know the international access code to reach your country from the United States. Without a complete fax number, HAL cannot call your fax machine.

2. Call only from a touch-tone voice telephone.
3. Follow the voice-prompted (English) menu.
4. Order individual documents by entering the desired document's number as listed in the HAL catalog. Use your telephone's keypad to enter the number.
5. You can order up to three documents per call.
6. The HAL catalog or documents that you request are faxed to you in a matter of minutes.

Use EuroHAL to order a catalog or individual documents in Europe

EuroHAL includes many documents, some in English and some in other European languages. If a local version of the document you want is available, EuroHAL will send it in your language. Otherwise, it will send English documents.

If you have a tone-dial telephone and a fax machine, then you can use EuroHAL. If your telephone has star (*) and hash mark (#) keys, then it can probably use tones; ask your local telephone supplier if you are not sure.

If your telephone does not have these keys or has a dial, you will need to buy a *tone dialer* from your local telephone or electronics shop. This small box is held to the phone and sends the standard tones that you need to talk to EuroHAL.

1. To use EuroHAL, dial one of the numbers listed in the following table.

Country	Number
Austria	00 44 1628 478 347
Belgium	00 44 1628 478 347
Denmark	00 44 1628 478 347
Finland	990 44 1628 478 347
France	05 90 81 86
Germany	0130 819 220
Holland	00 44 1628 478 347
Italy	00 44 1628 478 347
Norway	095 44 1628 478 347
Spain	07 44 1628 478 347
Sweden	0 09 44 1628 478 347
Switzerland	00 44 1628 478 347
UK	01628 478 347
Other countries	+44 1628 478 347 (where + is your country's International Access Code)

2. EuroHAL answers and asks which language you want to use.

For English	Press 1
For French	Press 2
For German	Press 3

3. The first time you use EuroHAL, you should order a catalog. This lists all the documents that are available, and is constantly updated.

4. EuroHAL asks you for your fax machine number. If you are calling from outside the UK, add your country code first, as shown in the following table.

Country	Country code	Your area code and fax number	Press # when finished
Austria	00 43	area code fax number	#
Belgium	00 32	area code fax number	#
Denmark	00 45	area code fax number	#
Finland	00 358	area code fax number	#
France	00 33	area code fax number	#
Germany	00 49	area code fax number	#
Holland	00 31	area code fax number	#
Italy	00 39	area code fax number	#
Norway	00 47	area code fax number	#
Spain	00 34	area code fax number	#
Sweden	00 46	area code fax number	#
Switzerland	00 41	area code fax number	#
UK		just enter your fax number	#
Other countries	00 xx	area code number	#

Using the Internet to download Tektronix files

If you don't have a way to transfer files from the Tektronix Windows 3.1 Driver and Printer Utilities diskette, you can request files from the Tektronix Color Printer Information Server, an automatic file serving program that responds to requests for files.

If you can exchange electronic mail with other Internet sites, you can access the Tektronix Color Printer Information Server. From this server you can retrieve driver and utility files and color printer information.

For the mail requests listed in the following table, substitute the library of your choice for `library-name`, and the file of your choice for `filename`.

Send your requests for files to the following electronic mail address:

`color_printer_info@TEKTRONIX.TEK.COM`

Electronic mail requests

To	Type this command
Receive the list of information available on the server	<code>send index</code> (type this at the <code>Subject</code> prompt)
Examine the full index for any library	<code>send index from library-name</code>
Request a file from a library	<code>send filename from library-name</code>
Determine a file's size	<code>send list filename from library-name</code>

Solving PostScript printing problems

PostScript printing errors

If you get a PostScript error when printing from Aldus PageMaker, Aldus FreeHand, QuarkXPress, or Canvas, you may be using an older or incorrect version of the printer description file. Refer to “Printing from an application” on page 2-16 (Macintosh) or page 3-26 (PC) for instructions on using printer description files.

When using printer description files, it is important to match the application’s version number to the printer’s firmware version number. You can check the printer’s firmware version number by printing a copy of the printer’s startup page. Refer to the *Phaser 540 Color Printer User Manual* for instructions on using the front panel to print the startup page. If you have upgraded your printer’s firmware version, you may need a newer printer description file.

For the most current printer description files, check the Tektronix Bulletin Board Service (BBS). Refer to page 9-1 for instructions on using the Tektronix BBS.

The following table lists a few Macintosh applications and some possible PostScript errors. For information on PC and other applications, request a document catalog from HAL or EuroHAL. Refer to page 9-2 for instructions on using these systems.

Application	Error or problem	Solution
QuarkXPress 3.11 QuarkXPress 3.2	Offending Command: cblnd	You are probably using an older PDF file. Check the BBS for the most current version of this file.
QuarkXPress 3.1x	Graduated fills print in black-and-white	You are probably using an older PDF file. Check the BBS for the most current version of this file.
FreeHand 3.1	error: typecheck offending command: put	A PostScript fill is being used with a color correction from the printer driver. Turn off any color correction in the driver and the image should print correctly.
FreeHand 3.1	TIFFs print in black-and-white	You are probably using the wrong PDX file. Check the BBS for the most current version of this file.

Random PostScript errors

If you are using AppleTalk Network Software below version 58.0, you may experience a problem with random PostScript errors when printing. If this is the case, you should upgrade the AppleTalk Network Software on your Macintosh computer.

The printing problem is due to a timing conflict between the older AppleTalk software and the printer. The PostScript errors can be any type of error or offending command, and may occur in any of the following situations:

- May occur more often over LocalTalk than EtherTalk.
- Sending the same file more than once may cause different errors or offending commands each time, or the file may print without an error.
- Files from some applications may print, while files from other applications may not.
- Documents saved to PostScript files and sent to the printer with a downloading utility may generate errors.

To upgrade your software

1. Insert the *AppleTalk Installer for the Macintosh* diskette into your computer's disk drive. This diskette was shipped with your printer.
2. Double-click on the Installer icon.
3. Click OK in the introduction screen.
4. Click Install in the Easy Install window to install the recommended software. (Or, click Customize to select individual items.)
5. After successful installation, click Restart to restart your computer.

Using a PostScript error handler

The error handling utility is useful for diagnosing problems when a job doesn't print. This utility installs a PostScript error-handling function in the printer to help determine the cause of some PostScript printing problems. PostScript errors are printed on a page with other status information when an error occurs. This utility can also be used by programmers for debugging PostScript code.

To turn on the error handler, refer to the following instructions. To turn off the error handler, follow the instructions on page 9-23 to reset the printer.

Macintosh users

1. If you have not decompressed the *Phaser 540 Utilities.sea* archive file on the Macintosh Driver and Printer Utilities diskette, follow the instructions on page 2-11 to decompress this file.
2. Select the appropriate printer in the Chooser.
3. Locate the *LaserWriter Utility* in the folder on your hard disk containing decompressed utility files.
4. Double-click on the LaserWriter Utility icon.
5. Select Download PostScript File from the Utilities menu.
6. Select the *Tek Error Handler* file in the folder on your hard disk containing decompressed utility files and click Open.
7. At the `Save PostScript output as:` prompt, you are asked to supply a file name for saving printer output. Use the default name given in the edit box or type in a new name. Then click Save to send the file to the printer.
8. If no output is returned by the printer, the *LaserWriter Utility* displays a dialog box. Click OK in the dialog box.

PC and workstation users

1. Locate the *TEKEHAND.PS* file in the *PHSR540* directory on the Tektronix Windows 3.1 Driver and Printer Utilities diskette.
2. Copy the file to your hard disk, or use it from the diskette.
3. Use one of the following methods to send the file to the printer:
 - PC users: Use the DOS COPY command or the Copy command in Windows File Manager to send the file to the printer. See page 20 and page 21 for details.
 - Workstation users: Send the file to the printer as you would any PostScript file.

Improving print speed

Note *There are different ways to improve print speed, such as by upgrading to EtherTalk on a Macintosh, to Novell NetWare on a PC, or to TCP/IP on a workstation. For more information, request a document catalog from HAL or EuroHAL, the Tektronix automated fax systems. Refer to page 9-2 for instructions on using these systems.*

If you tried to print a document with bitmapped images to a PostScript Level 2 printer, but are dissatisfied with the speed of the output, here are some suggestions.

All users

- When you use any color correction option (other than None), your printer can take longer to process bitmapped images.
- The Fast print quality option prints faster than the Standard or Enhanced options. Select print quality modes from the Tektronix drivers, with downloadable utility files, and from the printer's front panel.

Windows users

1. Turn off the Print Manager; printing via the Print Manager is slower, but turning it off ties up the PC longer.
2. Select the Tektronix Phaser 540 printer in the Printers dialog box.
3. Verify that the Use PostScript Level 2 Features check box in the Advanced Options dialog box is turned on.
4. From your application, choose the Tektronix Phaser 540 as your printer.
5. Try printing the document again.

Workstation users

Use the Tektronix Phaser Print software for faster printing. See page 4-2 for details.

If your file doesn't print

If you've configured the Tektronix driver for your printer but your printer isn't printing, try the following suggestions. If these suggestions fail to solve the problem, copy the Tektronix PostScript Level 2 error handler utility to your printer to determine what is wrong. Refer to page 9-9 for information on using the error handler.

General things to check for

Macintosh users

- Open the Chooser and select the Tektronix Phaser 540 driver and the printer you want to use.
- If you are having trouble printing from the Finder in System 7.1 (for example, if the Phaser 540 driver dialog boxes are not opening), it may be because the Finder doesn't have enough allocated memory. Reinstall the Tektronix driver to automatically allocate enough memory for printing from the Finder.

Windows users

- Make sure that your printer is connected to the port you selected in the Printers/Connect dialog box.
- Make sure you've configured the communications ports and the Handshake option correctly. To check the configuration, print a configuration page; see page A-4 for instructions.
- Try resetting the Transmission Retry timeout option in the Printers/Connect dialog box to 850 seconds.
- Check the Options dialog box to make sure that Printer, not Encapsulated PostScript File, is selected in the Print To box.
- The following error message appears on your computer screen:
Windows Header has not been downloaded to the printer.
Open the Options dialog box and turn on the Send Header with Each Job check box. Refer to page 3-10 for details.

If you are using PC/NFS

If you have PC/NFS software installed on your computer, you need to make the following selection in the Network Options dialog box:

1. Double-click the Print Manager icon from the Main window.
2. Select Network Settings from the Options menu in the Print Manager.
3. Uncheck the Print Net Jobs Direct box in the Network Options dialog box.
4. Click OK.

If you can't print from Windows to an LPT port

If your printer is connected through an LPT (parallel) port and your document doesn't print, try the following:

1. Double-click the Printers icon in the Control Panel.
2. In the Printers dialog box, choose your printer from the list of installed printers.
3. Click the Connect button to open the Connect dialog box.
4. Change your port connection from LPT x to LPT x .DOS (where x is 1, 2, or 3).
5. Click OK.

Check the printer's language mode

If your file doesn't print, the language on the printer's port you are using may have been changed.

1. Print a copy of the printer's configuration page to see the language mode on each port. Refer to page A-4 for instructions on printing a configuration page.
2. If the printer port you are using has the wrong language set for the type of application you are using, send one of the following utility files to the printer:
 - To print PostScript files, use the *PSCRIPT.PS* file to set up a port to receive PostScript; see page C-5 for details.
 - To print HP-GL files, use the *HPGL.PS* file to set up a port to receive HP-GL; see page C-5 for details.
 - To print PostScript, or HP-GL, or PCL5 files, use the *AIS.PS* file to set up a port for automatic language selection; see page C-5 for details.

Fixing timeout problems in Windows

Try one of the following procedures to correct Windows timeout problems. If the Windows procedure doesn't work for you, try the DOS procedure.

From Windows

1. Select Control Panel from the Main menu.
2. Select Printers.
3. Click the Connect button.
4. Increase the Transmission Retry to 850 seconds.

From DOS

Note *To use this procedure, the printer must be connected directly to your computer, not on a network.*

1. At the DOS prompt, run the DOS MODE command by typing the following:

```
MODE LPT1:,,P
```

2. Start Windows.
3. Select Control Panel from the Main menu.
4. Select Printers.
5. Click the Connect button.
6. Change the port selection from LPT1 to either LPT1.DOS or LPT1.OS2, depending on the options you see in the dialog box.

Correcting printing problems

Printed colors are not what you expected

- Select another Color Correction option in the driver and print your image again. Refer to Chapter 6, “Using Color,” for more information.
- If you are not using a Tektronix driver and are sharing the printer with other users on a network, another user may have changed the printer’s color adjustment setting. Refer to page 9-20 for more information.
- If you use the driver’s Use Printer Setting option and printed colors are not what you expected, check the selection in the TekColor Corrections menu on the printer’s front panel. These settings change the printer’s default color correction. Refer to page 6-6 for details on how these settings affect prints made from the driver.
- If PANTONE Colors are not printing as expected, make sure you are printing without any color corrections as outlined below. Also, refer to page 6-17 for information on printing the PANTONE Color chart.

If you have questions about PANTONE Color matching, refer to the HAL article on PANTONE Colors. Refer to page 9-2 for instructions on using HAL and EuroHAL.

- From the Tektronix Macintosh driver, select the None option in the TekColor Options dialog box.
- From the Tektronix Windows driver, select the None option in the Tektronix Printer Features dialog box.
- If you are not using a Tektronix driver, select None in the TekColor Correction menu on the printer’s front panel, or download the *No Color Correction (NOCORECT.PS)* utility file to the printer.

Use Tektronix halftone screens

Tektronix halftone screens are designed for Tektronix printers, and improve print quality over application-set halftone screens. The *Setscreen Patch* utility file redefines the *setscreen*, *setcolorscreen*, and *sethalftone* PostScript operators. When downloaded to the printer, this file prevents applications from overriding the Tektronix proprietary halftone screens.

Macintosh file name	PC file name
<i>Setscreen Patch</i>	<i>SETSCRN.PS</i>

Macintosh users

1. If you have not decompressed the *Phaser 540 Utilities.sea* archive file on the Macintosh Driver and Printer Utilities diskette, follow the instructions on page 2-11 to decompress this file.
2. Select the appropriate printer in the Chooser.
3. Locate the *LaserWriter Utility* in the folder on your hard disk containing decompressed utility files.
4. Double-click on the LaserWriter Utility icon.
5. Select Download PostScript File from the Utilities menu.
6. Select the *Setscreen Patch* file in the folder on your hard disk containing decompressed utility files and click Open.
7. At the `Save PostScript output as:` prompt, you are asked to supply a file name for saving printer output. Use the default name given in the edit box or type in a new name. Then click Save to send the file to the printer.
8. If no output is returned by the printer, the *LaserWriter Utility* displays a dialog box. Click OK in the dialog box.

PC and workstation users

Use one of the following methods to send the file to the printer:

- PC users: Use the DOS COPY command or the Copy command in Windows File Manager to send the file to the printer. See page 20 and page 21 for details.
- Workstation users: Send the file to the printer as you would any PostScript file.

Blue colors look too purple

Use one of the following methods to print with the Vivid Color color correction.

- Phaser 540 Macintosh driver (LaserWriter 7.1.2-based)
Select the Vivid Color option in the TekColor Options dialog box.
- Phaser 540 GX driver
Select the Vivid Color option in the Printer Driver Defaults dialog box.
- Windows driver
Select the Vivid Color option in the Tektronix Printer Features dialog box.
- Printer's front panel
TekColor Corrections menu, Vivid Color option.

Selecting page sizes in Windows applications

In some Windows applications, you can select printer page sizes in a Print Setup dialog box accessed from the File menu. If you use a Print Setup dialog box to select the Phaser 540 from your application, some page sizes may not appear in the list.

If the Phaser 540 page size you want to use does not appear in the list:

1. From the Main window, open the Control Panel and double-click the Printers icon.
2. In the Printers dialog box, select the Phaser 540 in the list of printers.
3. Click the Setup button.
4. In the Setup dialog box, select the page size you want and click OK.
5. Return to your application. If you open the Print Setup dialog box again from within your application, the page size selection may be blank. The page size you just selected in the driver is still selected, it is just not visible in the list.
6. Print as usual.

If you open the Print Setup dialog box from within an application, and the page size selection is blank, the blank represents the page size last selected from the printer driver through the Control Panel. You can leave the page size selection blank and print as usual, or you can select a page size from the list.

Sharing the printer on a network

Driver, utility file, and front panel interactions

If your Phaser 540 printer is shared by other users on a network, using the downloadable utility files or the printer's front panel to change the printer's default color correction setting can affect prints made by other users.

- When you print from a Tektronix driver with any TekColor color correction option *except* Use Printer Setting, the driver selection *overrides* the following selections *for prints made from the driver*:
 - A color correction utility file, if one has been downloaded to the printer.
 - The selection on the printer's front panel TekColor Corrections menu.
- When you print from a Tektronix driver using the Use Printer Setting option, your images are printed with one of the following selections:
 - A color correction utility file, if one has been downloaded to the printer.
 - The selection on the printer's front panel TekColor Corrections menu.
- When you print from a non-Tektronix driver, your images are printed with one of the following selections:
 - A color correction utility file, if one has been downloaded to the printer.
 - The selection on the printer's front panel TekColor Corrections menu.
- If the colors on your prints are not what you expected, and your system administrator has disabled some of the printer's front panel menus, ask them what settings are in effect and whether a color correction utility file has been downloaded to the printer.

LaserWriter Utility does not work

The *LaserWriter Utility* cannot be used if the printer is connected to a print server. See your system administrator to temporarily remove the printer from the print server to download any of the PostScript utility files.

Programs crashing on a network (Macintosh)

On Macintosh computers with a 68040 microprocessor (Quadra, Centris, and Performa 470 series), some programs may quit unexpectedly, or freeze the computer, when you try to open them over a network. To fix this problem, install the Network Launch Fix from the *AppleTalk Installer for the Macintosh* diskette shipped with your printer.

1. Insert the *AppleTalk Installer for the Macintosh* diskette into your computer's disk drive.
2. Drag the Network Launch Fix icon from the diskette to the *Extensions* folder, inside the *System Folder* on your computer's hard disk.
3. Restart your computer.

Resetting the printer

The *Reset Printer (RESET.PS)* file resets the printer to its power-on conditions (*not* its factory default conditions), without turning the printer's power switch off and on. The power-on conditions include any custom changes made to the printer that are stored in the printer's NVRAM, or changes that are persistent across printer power cycles. For example, if you used downloadable utility files to change the printer's name or set a color correction, these are power-on conditions that are not altered by resetting the printer. Resetting the printer erases changes that are not persistent across printer power cycles, such as the Tektronix error handler utility.

This file restarts the printer as soon as all the jobs in its queue are finished. The printer remains unavailable while it initializes.

Macintosh file name	PC file name
<i>Reset Printer and LaserWriter Utility</i>	<i>RESET.PS</i>

Macintosh users

Note *Do not use the Restart Printer command in the LaserWriter Utility's Utilities menu. Follow this procedure to reset the printer using the LaserWriter Utility to download the Reset Printer utility file.*

1. If you have not decompressed the *Phaser 540 Utilities.sea* archive file on the Macintosh Driver and Printer Utilities diskette, follow the instructions on page 2-11 to decompress this file.
2. Select the appropriate printer in the Chooser.
3. Locate the *LaserWriter Utility* in the folder on your hard disk containing decompressed utility files.

4. Double-click on the LaserWriter Utility icon.
5. Choose Download PostScript File from the Utilities menu.
6. Select the *Reset Printer* file in the folder on your hard disk containing decompressed utility files and click Open.

Note *The process of resetting the printer takes a few minutes to complete. You will receive a message on your screen indicating the connection has been interrupted during the reset. The connection is re-established after the reset, so you can ignore this message; click the Continue button.*

7. At the `Save PostScript output as:` prompt, you are asked to supply a file name for saving printer output. Use the default name given in the edit box or type in a new name. Click Save to send the file to the printer.
8. If no output is returned by the printer, the *LaserWriter Utility* displays a dialog box. Click OK in the dialog box.

PC and workstation users

1. Locate the *RESET.PS* file in the *PHSR540* directory on the Tektronix Windows 3.1 Driver and Printer Utilities diskette.
2. Copy the file to your hard disk, or use the file from the diskette.
3. Use one of the following methods to send the file to the printer:
 - PC users: Use the DOS COPY command or the Copy command in Windows File Manager to send the file to the printer. See page 20 and page 21 for details.
 - Workstation users: Send the file to the printer as you would any PostScript file.

Can't open the READ ME files on the Macintosh diskettes

The Tektronix Macintosh Driver and Printer Utilities diskette contains a *READ ME* file providing information that arrived too late to be included in this manual. The *READ ME* file was written in the *TeachText* program. You must have a copy of *TeachText* (or *SimpleText* for system 7.1 and later) installed on your hard disk to read these files. If you don't have a copy already installed, copy *TeachText* or *SimpleText* from the same Apple system software diskettes that you last used to upgrade your computer.

If you have problems using the media trays

The printer comes standard with one paper tray. You can add an optional Lower Tray Assembly, which holds two additional media trays. Refer to the *Phaser 540 Color Printer User Manual* for more information on optional printer accessories.

If you have problems with the media trays, you may find it helpful to understand how tray switching works. The following list outlines tray behavior and makes suggestions for you to try. When your printer is equipped with only one tray, the printer automatically picks media from that tray.

- Make sure your driver media selection matches your tray selection. For example, if you select A4-size paper, you must also select the location (upper, middle, or lower) of the A4 Paper tray.
- If you have selected the upper, middle, or lower tray from the driver and the job doesn't print, make sure the selected tray contains media.
- If you choose the Paper or Transparency selections using the driver or the printer's front panel, the printer picks media from a media tray of the appropriate type until that tray is empty. When that tray is empty, the printer switches to another tray, *as long as a tray of the appropriate type is available* (paper or transparency). Otherwise, printing stops until you fill the tray.

- For those not using a Tektronix driver
If you send the *Use Any Tray (ANYTRAY.PS)* file to the printer, when one tray runs out of media, the printer automatically switches to one of the other trays *only* if it contains the same media type as the first tray. If there are two different media types in the trays, the printer does not automatically switch trays.

Refer to the *Phaser 540 Color Printer User Manual* for more information.

A

Modifying Printer Operations

This appendix explains how to modify printer operation by:

- Enabling and disabling the startup page
- Printing a configuration page
- Changing the EtherTalk zone
- Enabling and disabling the menus on the printer's front panel
- Configuring a printer's serial port for a PC
- Enabling and disabling bi-directional status reporting

Enabling and disabling the startup page

Note *If you are using a Macintosh with System 7.5 and QuickDraw GX, you can use the Tektronix Phaser 540 GX driver to print a copy of the startup page without turning the printer off and on. Refer to page 8-11 for instructions.*

You can also print a copy of the startup page from the printer's front panel; refer to the Phaser 540 Color Printer User Manual for instructions.

You can choose to have a startup page print each time the printer is turned on or reset, or you can disable the startup page.

Use one of the following files depending on your computer type.

Macintosh file name	PC file name
<i>LaserWriter Utility</i>	<i>NOSTRTPG.PS</i> <i>STARTPG.PS</i>

Macintosh users

1. If you have not decompressed the *Phaser 540 Utilities.sea* archive file on the Macintosh Driver and Printer Utilities diskette, follow the instructions on page 2-11 to decompress this file.
2. Select the appropriate printer in the Chooser.
3. Locate the *LaserWriter Utility* in the folder on your hard disk containing decompressed utility files.
4. Double-click the LaserWriter Utility icon to start the application.
5. Choose Set Startup Page from the Utilities menu.
6. Select either the on or off button, then click OK.

PC and workstation users

- Use the *STARTPG.PS* file to enable printing of the printer's startup page.
- Use the *NOSTRTGP.PS* file to stop the printer from printing a startup page.
- 1. Locate the startup page files in the *PHSR540* directory on the Tektronix Windows 3.1 Driver and Printer Utilities diskette.
- 2. Copy the files to your hard disk, or use the files from the diskette.
- 3. Use one of the following methods to send the desired file to the printer:
 - PC users: Use the DOS *COPY* command or the Copy command in Windows File Manager to send the file to the printer. See page 3-20 and page 3-21 for details.
 - Workstation users: Send the file to the printer as you would any PostScript file.

Printing a configuration page

A configuration page is similar to the printer's startup page, but it also provides details about each available port. Use one of the following files depending on your computer type.

Macintosh file name	PC file name
<i>Configuration Page</i>	<i>PRNTCNFG.PS</i>

Macintosh users

1. If you have not decompressed the *Phaser 540 Utilities.sea* archive file on the Macintosh Driver and Printer Utilities diskette, follow the instructions on page 2-11 to decompress this file.
2. Select the appropriate printer in the Chooser.
3. Locate the *LaserWriter Utility* in the folder on your hard disk containing decompressed utility files.
4. Double-click the LaserWriter Utility icon to start the application.
5. Choose Download PostScript File from the Utilities menu.
6. Select the *Configuration Page* file from the list and click Open.
7. At the Save PostScript output as: prompt, you are asked to supply a file name for saving printer output. Use the default name given in the edit box or type in a new name. Click Save to send the file to the printer.
8. If no output is returned by the printer, the *LaserWriter Utility* displays a dialog box. Click OK in the dialog box.

PC and workstation users

1. Locate the *PRNTCNFG.PS* file in the *PHSR540* directory on the Tektronix Windows 3.1 Driver and Printer Utilities diskette.
2. Copy the file to your hard disk, or use the file from the diskette.
3. Use one of the following methods to send the file to the printer:
 - PC users: Use the DOS COPY command or the Copy command in Windows File Manager to send the file to the printer. See page 3-20 and page 3-21 for details.
 - Workstation user: Send the file to the printer as you would any PostScript file.

Setting the printer's EtherTalk zone

A *zone* is a logical grouping of network devices, such as an engineering or marketing zone. Ask your network administrator which zone your printer should be in.

A network needs to be able to uniquely identify any device, so you must make sure the zone on EtherTalk is different from the zone on LocalTalk. If you make the EtherTalk zone the same as the LocalTalk zone, the printer automatically makes the name seen on the LocalTalk network different from the name seen on the EtherTalk network. For example, it would change the default printer name Phaser 540 to Phaser 540 (via LocalTalk). This automatic renaming keeps the printer operational regardless of zone or name conflicts and lets you distinguish the high-speed Ethernet connection from the slower LocalTalk connection.

Use one of the following files depending on your computer type.

Macintosh file name	PC file name
<i>Set EtherTalk Zone</i>	<i>ETHRZONE.PS</i>

Macintosh users

With devices grouped into zones, you can use the Chooser to see all the printers in any zone.

To designate the EtherTalk zone, use the *Set EtherTalk Zone* utility file. You will have to edit this file. You must have a copy of *TeachText* (or *SimpleText* for System 7.1 and higher) installed on your hard disk to do this editing. If you don't have a copy already installed, copy *TeachText* (or *SimpleText*) from the same Apple system software diskettes you last used to upgrade your computer.

If you have both LocalTalk and Ethernet cables as part of the same Apple Internet, it is recommended that you connect only the Ethernet cable. There is no benefit to making both LocalTalk and Ethernet connections to the printer if both cables are part of the same Apple Internet. See the *Phaser 540 Color Printer User Manual* for information on printer behavior in this configuration.

1. If you have not decompressed the *Phaser 540 Utilities.sea* archive file on the Macintosh Driver and Printer Utilities diskette, follow the instructions on page 2-11 to decompress this file.
2. View the file in *TeachText* or *SimpleText*.
3. Replace the name within the parentheses (*My Zone Name*) with the name of the EtherTalk zone your printer is in.
4. Save the file and quit.
5. Select the appropriate printer in the Chooser.
6. Locate the *LaserWriter Utility* in the folder on your hard disk containing decompressed utility files.
7. Double-click the LaserWriter Utility icon to start the application.
8. Choose Download PostScript File from the Utilities menu.
9. Select the *Set EtherTalk Zone* file from the list, then click Open.
10. At the Save PostScript output as: prompt, you are asked to supply a file name for saving printer output. Use the default name given in the edit box or type in a new name. Click Save to send the file to the printer.
11. If no output is returned by the printer, the *LaserWriter Utility* displays a dialog box. Click OK in the box to continue.

PC and workstation users

To designate the zone on EtherTalk, use the *ETHRZONE.PS* file. You must edit this file.

1. Ask your network administrator which zone you should use.
2. Locate the *ETHRZONE.PS* file in the *PHSR540* directory on the Tektronix Windows 3.1 Driver and Printer Utilities diskette.
3. Copy the file to your hard disk.
4. View the file and replace the name within the parentheses (*My Zone Name*) with the name of the EtherTalk zone that your printer is in.
5. Save the file and quit.
6. Use one of the following methods to send the file to the printer:
 - PC users: Use the DOS COPY command or the Copy command in Windows File Manager to send the file to the printer. See page 3-20 and page 3-21 for details.
 - Workstation users: Send the file to the printer as you would any PostScript file.

Enabling and disabling front panel menus

You can enable and disable the printing features menus on the printer's front panel. For example, selections made on the printer's front panel can affect the prints of all users sharing the printer on a network. A system administrator may want to disable the menus so users can only select printing features, such as color corrections, through their applications on an individual basis.

Macintosh file name	PC file name
<i>Menu Short</i>	<i>MENUSHRT.PS</i>
<i>Menu Long</i>	<i>MENULONG.PS</i>

Note *If you have used the Menu Short (MENUSHRT.PS) file to disable the front panel menus, you can temporarily re-enable the menus by holding down the Menu button while pressing the Exit button. You can scroll through the menus as usual, however, when you press the Exit button again the front panel returns to the shortened form.*

Macintosh users

- Use the *Menu Short* file to disable the printing features menus on the printer's front panel.
 - Use the *Menu Long* file to expand the printer's front panel to show all menus.
1. If you have not decompressed the *Phaser 540 Utilities.sea* archive file on the Macintosh Driver and Printer Utilities diskette, follow the instructions on page 2-11 to decompress this file.
 2. Select the appropriate printer in the Chooser.
 3. Locate the *LaserWriter Utility* in the folder on your hard disk containing decompressed utility files.
 4. Double-click the LaserWriter Utility icon to start the application.

5. Choose Download PostScript File from the Utilities menu.
6. Select the *Menu Short* file or the *Menu Long* file from the list and click Open.
7. At the `Save PostScript output as:` prompt, you are asked to supply a file name for saving printer output. Use the default name given in the edit box or type in a new name. Click Save to send the file to the printer.
8. If no output is returned by the printer, the *LaserWriter Utility* displays a dialog box. Click OK in the box to continue.

PC and workstation users

- Use the *MENUSHRT.PS* file to disable the printing features menus on the printer's front panel.
 - Use the *MENULONG.PS* file to expand the printer's front panel to show all menus.
1. Locate the *MENUSHRT.PS* file and the *MENULONG.PS* file in the *PHSR540* directory on the Tektronix Windows 3.1 Driver and Printer Utilities diskette.
 2. Copy the files to your hard disk, or use the files from the diskette.
 3. Use one of the following methods to send the desired file to the printer:
 - PC users: Use the DOS COPY command or the Copy command in Windows File Manager to send the file to the printer. See page 3-20 and page 3-21 for details.
 - Workstation users: Send the file to the printer as you would any PostScript file.

Configuring a printer's serial port for a PC

If your printer has the optional serial port installed, you can configure the port using the *DEVPARAM.PS* file or using front panel selections. Refer to your *Phaser 540 Color Printer User Manual* for information on configuring serial ports from the front panel.

Note *To modify DEVPARAM.PS you should be familiar with the PostScript setdevparams command. You should also know how to use PostScript dictionaries and key value pairs.*

You should edit the *DEVPARAM.PS* file before using other files to change the printer's performance.

The following example sets these parameters:

- Flow control to *Xon/Xoff*
- Parity to *none*
- Data bits to *8*
- Stop bits to *2*
- Baud rate to *9600*

In this example, the changes are persistent across jobs and across printer power cycles; they remain in effect until you change them again.

```
(%Serial_NV%) 6 dict begin
    /Password      () def
    /FlowControl   /XonXoff def
    /Parity        /None def
    /DataBits      8 def
    /StopBits     2 def
    /Baud         9600 def
currentdict end setdevparams
```

A *Modifying Printer Operations*

1. Locate the *DEVPARAM.PS* file in the *PHSR540* directory on the Tektronix Windows 3.1 Driver and Printer Utilities diskette.
2. Copy the file to your hard disk.
3. View the file and substitute the values you want to use for the current values in *DEVPARAM.PS*. The possible values for each parameter are listed in the table on the next page. The values are case-sensitive and must be entered exactly as shown in the table.
4. Save the file.
5. Configure the printer port to receive PostScript.
6. Use one of the following methods to send the file to the printer:
 - PC users: Use the DOS COPY command or the Copy command in Windows File Manager to send the file to the printer. See page 3-20 and page 3-21 for details.
 - Workstation users: Send the file to the printer as you would any PostScript file.

Parameter values

Parameter key	Allowed values	Type
FlowControl	XonXoff (software) Dtr (hardware)	string
Parity	Even Odd None Space	string
DataBits	7 8	integer
StopBits	1 2	integer
Baud	300 600 1200 2400 4800 9600 19200 38400	integer
Enabled	true false	boolean
CheckParity	true false	boolean
On	true false	boolean
Interpreter	PostScript HP7475A	string
Protocol	Normal Raw Binary	string

Enabling and disabling bi-directional status reporting

These utility files are provided for support of future operating systems and applications that are capable of bi-directional status reporting with a printer connected to the parallel port. This feature uses the *IEEE* specification, and supports the *Nibble Mode* protocol.

You do not need a special cable; refer to the *Phaser 540 Color Printer User Manual* for information on ordering the standard parallel cable available from Tektronix.

Note *Windows 3.0 and 3.1 do not support bi-directional status reporting.*

The printer is shipped with the uni-directional mode enabled.

- Use the *BIDIR.PS* file to enable bi-directional status reporting on a parallel port.
- Use the *UNIDIR.PS* file to disable bi-directional status reporting.
- 1. Locate the *BIDIR.PS* file and the *UNIDIR.PS* file in the *PHSR540* directory on the Tektronix Windows 3.1 Driver and Printer Utilities diskette.
- 2. Copy the files to your hard disk, or use the files from the diskette.
- 3. Use one of the following methods to send the desired file to the printer:
 - PC users: Use the DOS COPY command, or the Copy command in the Windows File Manager, to send the file to the printer. See page 3-20 for instructions.
 - Workstation users: Send the file to the printer as you would any PostScript file.

B

Using SCSI Hard Disks

This appendix explains how to use a SCSI hard disk with your Phaser 540 printer. It covers the following topics:

- Selecting a SCSI hard disk
- Formatting a SCSI hard disk
- Initializing a formatted SCSI hard disk
- Enabling and disabling SysStart job execution

Selecting a SCSI hard disk

The printer can use most SCSI hard disks that support the full SCSI command set. Also, most SCSI hard disks that work with an Apple LaserWriter will work with a Phaser 540 printer. Contact your computer or printer dealer for information.

For additional information on SCSI hard disks, request a document catalog from HAL or EuroHAL, the Tektronix automated fax systems. Refer to page 9-2 for instructions on using these systems.

Formatting a SCSI hard disk

Caution *This procedure erases all data from all SCSI hard disks connected to the printer. Disconnect from the printer any hard disk you do not want reformatted, for example, a disk containing fonts.*

Use this procedure to format a SCSI hard disk connected to the printer, then follow the instructions in “Initializing a formatted SCSI hard disk” on page B-4. Some hard disks are formatted at the factory and do not require this formatting procedure. Check the documentation that came with your hard disk to see if the disk needs formatting.

This procedure formats all SCSI hard disks connected to the printer so the disks are usable with the PostScript Level 2 Phaser 540 printer. The formatting process *erases all information already on the disk*; be sure you want the disk formatted before you use this procedure. If you have a disk containing information you want to keep, such as fonts, turn off all devices, then disconnect the disk from the printer *before* using this file to format other disks.

Note *For additional information on SCSI hard disks, request a document catalog from HAL or EuroHAL, the Tektronix automated fax systems. Refer to page 9-2 for details on using these systems.*

Use one of the following files depending on your computer type.

Macintosh file name	PC file name
<i>Format Printer Disk</i>	<i>FRMTDISK.PS</i>

Note *Once you start the formatting procedure, there is no way to cancel the formatting process.*

Macintosh users

1. If you have not decompressed the *Phaser 540 Utilities.sea* archive file on the Macintosh Driver and Printer Utilities diskette, follow the instructions on page 2-11 to decompress this file.
2. Select the appropriate printer in the Chooser.
3. Locate the *LaserWriter Utility* in the folder on your hard disk containing decompressed utility files.
4. Double-click on the LaserWriter Utility icon.
5. Select Download PostScript File from the Utilities menu.
6. Select the *Format Printer Disk* file in the folder on your hard disk containing decompressed utility files and click Open.
7. At the `Save PostScript output as:` prompt, you are asked to supply a file name for saving printer output. Use the default name given in the edit box or type in a new name. Then click Save to send the file to the printer.
8. If no output is returned by the printer, the *LaserWriter Utility* displays a dialog box. Click OK in the dialog box.

PC and workstation users

1. Locate the *FRMTDISK.PS* file in the *PHSR540* directory on the Tektronix Windows 3.1 Driver and Printer Utilities diskette.
2. Copy the file to your hard disk, or use the file from the diskette.
3. Use one of the following methods to send the file to the printer:
 - PC users: Use the DOS COPY command or the Copy command in Windows File Manager to send the file to the printer. See page 3-20 and page 3-21 for details.
 - Workstation users: Send the file to the printer as you would any PostScript file.

Initializing a formatted SCSI hard disk

Use this procedure to initialize a formatted SCSI hard disk connected to the printer. Use one of the following files depending on your computer type.

Macintosh file name	PC file name
<i>LaserWriter Utility</i>	<i>INITDISK.PS</i>

Macintosh users

1. If you have not decompressed the *Phaser 540 Utilities.sea* archive file on the Macintosh Driver and Printer Utilities diskette, follow the instructions on page 2-11 to decompress this file.
2. Select the appropriate printer in the Chooser.
3. Locate the *LaserWriter Utility* file in the folder on your hard disk containing decompressed utility files.
4. Double-click the LaserWriter Utility icon.
5. Choose Initialize Printer's Disk from the File menu. (This option is grayed out (unavailable) if no SCSI disk is connected to the printer.)
6. Select the file name; then click Open.

PC and workstation users

1. Locate the *INITDISK.PS* file in the *PHSR540* directory on the Tektronix Windows 3.1 Driver and Printer Utilities diskette.
2. Copy the file to your hard disk, or use the file from the diskette.
3. Use one of the following methods to send the file to the printer:
 - PC users: Use the DOS COPY command or the Copy command in Windows File Manager to send the file to the printer. See page 3-20 and page 3-21 for details.
 - Workstation users: Send the file to the printer as you would any PostScript file.

Enabling and disabling SysStart Job execution

Send one of these files to the printer to control SysStart Job execution.

Macintosh file name	PC file name
<i>Set SysStart Job</i>	<i>SYSTART.PS</i>
<i>No SysStart Job</i>	<i>NOSYSTRT.PS</i>

Note You can also control SysStart Job execution from the printer's front panel using the Startup Mode option in the Printer Defaults menu.

- The *Set SysStart Job (SYSTART.PS)* file enables automatic execution of a file named *SysStart* (if one is found) on a hard disk connected to the printer's SCSI port, each time the printer is turned on or reset. The SysStart job is similar to an Init file; it executes automatically each time the printer is turned on.
- The *No SysStart Job (NOSYSTRT.PS)* file disables automatic execution of the SysStart job.

Macintosh users

1. If you have not decompressed the *Phaser 540 Utilities.sea* archive file on the Macintosh Driver and Printer Utilities diskette, follow the instructions on page 2-11 to decompress this file.
2. Select the appropriate printer in the Chooser.
3. Locate the *LaserWriter Utility* in the folder on your hard disk containing decompressed utility files.
4. Double-click on the LaserWriter Utility icon.
5. Select Download PostScript File from the Utilities menu.

6. Select the *Set SysStart Job* or *No SysStart Job* file in the folder on your hard disk containing decompressed utility files and click Open.
7. At the `Save PostScript output as:` prompt, you are asked to supply a file name for saving printer output. Use the default name given in the edit box or type in a new name. Then click Save to send the file to the printer.
8. If no output is returned by the printer, the *LaserWriter Utility* displays a dialog box. Click OK in the dialog box.

PC and workstation users

1. Locate the *SYSTART.PS* and *NOSYSTRT.PS* files in the *PHSR540* directory on the Tektronix Windows 3.1 Driver and Printer Utilities diskette.
2. Copy the files to your hard disk, or use the files from the diskette.
3. Use one of the following methods to send the desired file to the printer:
 - PC users: Use the DOS COPY command or the Copy command in Windows File Manager to send the file to the printer. See page 3-20 and page 3-21 for details.
 - Workstation users: Send the file to the printer as you would any PostScript file.

C

Using Different Printer Language Modes

This appendix is for PC or workstation users who want to use PostScript, HP-GL (Hewlett-Packard's Graphics Language), or monochrome PCL5 (Printer Command Language) printer languages. It explains how to perform the following tasks:

- Setting PostScript and HP-GL timeouts
- Changing printer language modes
- Testing printer language mode changes
- Setting default HP-GL pen colors

Setting PostScript and HP-GL job and wait timeouts

Note The HP-GL job timeout is the same as the PostScript job timeout.

The *CONFIG.PS* file changes the PostScript and HP-GL job and wait timeout values. Changes are persistent across print jobs but not across printer power cycles.

- The wait timeout is the amount of time in seconds that the printer waits for data to come from the computer during a job. If the data stream pauses for longer than the specified number of seconds, a timeout error is generated and the job is cancelled.
- The job timeout is the amount of time any single job may be active before it must print.
 - In PostScript mode, if the value is exceeded, a *timeout* error is generated.
 - In HP-GL mode, if the timeout value is too small, an image may be split across two pages; if the value is too large, multiple-page prints may be combined on one page.

Note This file affects printer operation. If the printer is shared on a network, using this file may affect the prints requested from other users.

1. Configure the printer port to receive PostScript.
2. Locate the *CONFIG.PS* file in the *PHSR540* directory on the Tektronix Windows 3.1 Driver and Printer Utilities diskette.
3. The default values for the printer are 0 seconds for the job timeout and 40 seconds for the wait timeout. A timeout value of 0 indicates no timeout; the printer waits indefinitely.

To change *CONFIG.PS* to specify different timeouts, substitute new values for 0, 40, and 60 in the `JobTimeOut`, `WaitTimeOut`, and `ManualFeedTimeout` lines. Permitted timeout values are as follows:

- `JobTimeOut`: 0 to 999
- `WaitTimeOut`: 0, or 15 to 999
- `ManualFeedTimeout`: 0 to 999
- To specify no timeout, use 0

In the following example, the timeouts are set to their default values.

```
3 dict begin
  /Passwor( ) def
  /JobTimeOut 0 def
  /WaitTimeOut 40 def
currentdict end setsystemparams
1 dict begin
  currentpagedevice /ManualFeedTimeout known
{ /ManualFeedTimeout 60 def } if
currentdict end setpagedevice
```

4. Use one of the following methods to send the file to the printer:
 - PC users: Use the DOS COPY command or the Copy command in Windows File Manager to send the file to the printer. See page 3-20 and page 3-21 for details.
 - Workstation users: Send the file to the printer as you would any PostScript file.

Changing printer language modes

The printer supports the following printer languages:

- PostScript Level 1 and Level 2
- HP-GL (Hewlett-Packard Graphics Language)
- Monochrome PCL5 (Printer Command Language)

In the factory default configuration, the printer expects to receive PostScript data on all ports. To use an HP-GL application, you must explicitly set up a printer port for HP-GL data, or enable Adobe IntelliSelect™ automatic language selection. To use a PCL5 application, you must enable automatic language selection on a port.

Changing the language of the printer between PostScript, HP-GL, and PCL5 is port-specific. The ports, such as parallel, serial, or LocalTalk, can each be configured differently. You can change the default language on any port so whenever the printer is turned on it expects to receive PostScript, HP-GL, or PCL5 data on a specific port. If automatic language selection is enabled on a particular port, it becomes the default on that port, allowing you to change back and forth between PostScript, HP-GL, and PCL5.

Changes to the language on any port are persistent across print jobs and across printer power cycles.

Note *The following files affect printer operation. If the printer is shared on a network, using these files may affect the prints requested from other users.*

- To print PostScript files, use the *PSCRIPT.PS* file to set up a port to receive PostScript.
- To print HP-GL files, use the *HPGL.PS* file to set up a port to receive HP-GL.
- To print PCL5 files, use the *AIS.PS* file to set up a port for automatic language selection.

Printing PostScript files

The *PSCRIPT.PS* file changes a port to accept only PostScript data. After you copy this file to a port, the printer expects PostScript files on that port. The port's language change is persistent across print jobs and across printer power cycles.

- To use, send the *PSCRIPT.PS* file to the printer.

Printing HP-GL files

The *HPGL.PS* file changes a port to accept only HP-GL data. After you copy this file to a port, the printer expects HP-GL files on that port. The port's language change is persistent across print jobs and across printer power cycles.

- To use, send the *HPGL.PS* file to the printer.

Printing PCL5 files

The *AIS.PS* file changes a port to automatic language selection. After you copy this file to a port, the printer will accept monochrome PCL5, or PostScript, or HP-GL files on that port. The port's language change is persistent across print jobs and across printer power cycles.

- To use, send the *AIS.PS* file to the printer.

Testing printer language mode changes

HP-GL mode

HPGLTEST.PLT is an HP-GL file that prints a single line of text if the printer is operating in HP-GL mode.

Use one of the following methods to send the *HPGLTEST.PLT* file to the printer after you send *HPGL.PS* to make sure the change was made correctly:

- PC users: Use the DOS COPY command or the Copy command in Windows File Manager to send the file to the printer. See page 3-20 and page 3-21 for details.
- Workstation users: Send the file to the printer.

PostScript mode

PSTEST.PS is a PostScript file that prints a single line of text if the printer is operating in PostScript mode.

Use one of the following methods to send the *PSTEST.PS* file to the printer after you send *PSCRIPT.PS* to make sure the change was made correctly:

- PC users: Use the DOS COPY command or the Copy command in Windows File Manager to send the file to the printer. See page 3-20 and page 3-21 for details.
- Workstation users: Send the file to the printer as you would any PostScript file.

Setting default HP-GL pen colors

The *HPGLPENS.PS* file changes the color and width of the default pen colors. The HP 7475A plotter actually has only six pens, but the printer's emulation supports up to 256 pens.

Note *HP-GL pen settings cannot be made persistent across power cycles; pen settings revert to the default when the printer is turned off.*

In *HPGLPENS.PS*, pen number, pen width, red value, green value, and blue value are listed in parentheses after */ColorSetup* as shown below.

```
/ColorSetup (pen_number width red_value green_value
blue_value) ..
```

In the example below, all pen widths are set to 0.35 millimeters. Pen 0 is white (this is the background pen color), pen 1 is black, pen 2 is red, pen 3 is green, pen 4 is blue, pen 5 is cyan, pen 6 is magenta, and pen 7 is yellow.

The pen color change is persistent across jobs, but not across printer power cycles; it affects all HP-GL jobs that immediately follow it until the next printer reset.

Note *This file affects printer operation. If the printer is shared on a network, using this file may affect the prints requested from other users.*

```
CTRL-D
(%HP7475A%) << /Password ()
                /ColorSetup (0 0.35 1.0 1.0 1.0
                              1 0.35 0.0 0.0 0.0
                              2 0.35 1.0 0.0 0.0
                              3 0.35 0.0 1.0 0.0
                              4 0.35 0.0 0.0 1.0
                              5 0.35 0.0 1.0 1.0
                              6 0.35 1.0 0.0 1.0
                              7 0.35 1.0 1.0 0.0)
                >> setdevparams
CTRL-D
```

Allowable values for pen numbers are 0 through 255. Pen width is measured in millimeters. Red, green, and blue values can be any number between 0.0 and 1.0. The following table shows the red, green, and blue combinations for each of the eight basic colors.

HP-GL pen color values

Color	Red value	Green value	Blue value
red	1.0	0.0	0.0
green	0.0	1.0	0.0
blue	0.0	0.0	1.0
yellow	1.0	1.0	0.0
magenta	1.0	0.0	1.0
cyan	0.0	1.0	1.0
white	1.0	1.0	1.0
black	0.0	0.0	0.0

To add a new pen, you must redefine pens 0 through 7 first, then add the new pens that you want.

To set pen widths and colors to values other than those in *HPGLPENS.PS*, do the following:

1. Configure the printer port to receive PostScript; see page C-5.
2. Edit the file and substitute the values that you want for those in the file. Color values can be any decimal number between 0.0 and 1.0.

For example, to change pen 4 to a purple color and a width of .5 mm, edit *HPGLPENS.PS* and change the line for pen number 4 to the following:

```
4 0.5 1.0 0.0 0.5
```


Index

A

- addctrld, UNIX shell script 4-5
- ADDCTRLD.BAT, PC utility file 3-25
- adjusting printed colors 6-1
- adjusting to print a truer blue 6-8
- Adobe Illustrator, PANTONE color library file
 - Macintosh 2-21
 - PC 3-29
- AIS.PS, PC utility file C-5
- Aldus FreeHand, PANTONE color library file
 - Macintosh 2-22, 2-24
 - PC 3-30
- Aldus PageMaker, PANTONE color library file
 - Macintosh 2-24
 - PC 3-31
- ANYTRAY.PS, PC utility file 5-7
- AppleTalk Network Software, upgrading 9-8
- applications, printing from
 - Macintosh 2-16 to 2-24
 - PC 3-26 to 3-32
- automated fax systems 9-2

B

- BBS 9-1
- before you begin 1-1
- BIDIR.PS, PC utility file A-14
- bi-directional status reporting
 - disabling A-14
 - enabling A-14
- blue color adjustment 6-8
- Bulletin Board Service 9-1

C

- Canvas (Macintosh), printer
 - description files 2-18
- changing the printer's name
 - Macintosh 2-15
 - PC 3-23
 - workstation 3-23
- CIE colors 6-1
- CMYK Sampler, Macintosh utility file 6-12
- CMYK.PS, PC utility file 6-12
- color charts
 - CMYK 6-13
 - HSB 6-13
 - PANTONE 6-17
 - printing 6-12 to 6-18
 - RGB 6-13
- color corrections
 - from an application 6-5
 - monochrome or gray scale 6-10
 - no corrections 6-8
 - selecting 6-4 to 6-11
 - simple conversions 6-11
 - simulate display 6-8
 - simulate printing press 6-9
 - use printer setting 6-10
 - vivid color 6-8
- colors
 - adjusting or correcting 6-1, 9-16
 - guidelines for using 6-2 to 6-3
- commands, DOS
 - COPY command, using 3-20
 - MODE command, using 3-19
- Commercial Press, Tektronix driver setting 6-9
- communication ports 3-6
- CONFIG.PS, PC utility file C-2
- configuration page
 - printing (Macintosh) A-4
 - printing (PC) A-4

- Configuration Page, Macintosh utility file A-4
- configuring
 - serial ports (PC) A-11 to A-14
 - Windows printer driver 3-5 to 3-8
- Control Startpage files
 - Macintosh A-2
 - PC A-2
- Control-D
 - PC utility files 3-25
 - workstation 4-4
- COPY command, using 3-20
- CorelDRAW!, PANTONE Color
 - library file (PC) 3-32
- correcting printed colors 6-1
- creating a desktop printer 8-3
- CTRLD.PS, PC utility file 3-25
- customer support 9-1

D

- decompressing Macintosh utility files 2-11
- default desktop printer, setting with
 - QuickDraw GX driver 8-8
- delctrl, UNIX shell script 4-5
- desktop printers
 - creating 8-3
 - printing from 8-6
 - setting up 8-5
- DEVPARAM.PS, PC utility file A-11, A-14
- diskettes
 - contents 1-4
 - locating 1-1
 - mounting on a workstation 4-6 to 4-8
- display colors, simulating 6-8
- DOS
 - COPY command, using 3-20
 - printing from 3-19

- downloading
 - files from Tektronix over the Internet 9-6
 - fonts (Macintosh) 7-3
 - fonts (PC) 7-6
- downloading PostScript files
 - from a workstation 4-1
 - from DOS 3-20
 - from QuickDraw GX driver 8-11, 8-13
 - from Windows 3-21
- drivers
 - Macintosh printer driver 1-2
 - QuickDraw GX driver 8-1
 - when to use 1-2
 - Windows NT printer driver 3-16
 - Windows printer driver 1-2
- drivers, utility files, and front panel 1-2

E

- enhanced print quality 5-10
- Enhanced Quality, Macintosh utility file 5-11
- ENHANCED.PS, PC utility file 5-11
- error handlers, PostScript 9-9
- EtherTalk printer name 2-15, 3-23
- Euroscale Press, Tektronix driver setting 6-9
- Extension Setup command 8-9

F

- fast print quality 5-10
- Fast Quality, Macintosh utility file 5-11
- FAST.PS, PC utility file 5-11
- fax systems, information 9-2
- files, utility *See Macintosh utility files and PC utility files.*
- font sampler
 - printing (Macintosh) 7-4
 - printing (PC) 7-6
- Font Sampler, Macintosh utility file 7-4

fonts

- decompressing (Macintosh) 7-2
- downloading (Macintosh) 7-3
- downloading (PC) 7-6
- installing (Macintosh) 7-2
- Macintosh 7-1 to 7-4
- Windows 7-5 to 7-6

FONTSPS.PS, PC utility file 7-6

Format Printer Disk, Macintosh utility file B-2

format SCSI hard disk B-2

FreeHand

- printer description files
(Macintosh) 2-18 to 2-19
- printer description files (PC) 3-27

FRMTDISK.PS, PC utility file B-2

front panel

- interactions with drivers and utility files 1-2
- when to use 1-3

front panel menus

- disabling A-9
- enabling A-9

H

HAL 4-2

halftone screens 9-17

hard disk, SCSI

- formatting B-2
- initializing B-4
- selecting B-1

help, Windows printer driver 3-2

HP-GL language C-4

HP-GL pen colors C-7

HPGL.PS, PC utility file C-5

HPGLPENS.PS, PC utility file C-7

HPGLTEST.PLT, PC utility file C-6

HSB.PS, PC utility file 6-12

I

image orientation 5-12

information server 9-6

initializing a SCSI hard disk B-4

INITDISK.PS, PC utility file B-4

Input Trays command 8-9

input trays, controlling with

QuickDraw GX driver 8-9

installing

Macintosh printer driver 2-2

QuickDraw GX driver 8-2

Windows printer driver on a
computer 3-3 to 3-4

Windows printer driver on a network 3-12
to 3-13

Internet, downloading Tektronix files from 9-6

introductory information 1-1

J

job timeout C-2

L

landscape orientation 5-12

language modes

checking 9-14

HP-GL C-4

PCL5 C-4

PostScript C-4

testing mode changes C-6

LaserWriter 8.x driver, using 2-7 to 2-9

LaserWriter Utility, Macintosh utility file 2-12

LocalTalk printer name 2-15, 3-23

LOWRTRAY.PS, PC utility file 5-7

M

- Macintosh printer driver
 - extensions to Print dialog box 2-4
 - installing 2-2
 - locating the software 1-2
 - media sizes 5-2
 - media trays 5-7
 - Page Setup dialog box 2-5
 - Print dialog box 2-5
 - selecting printer in Chooser 2-3
 - system requirements 2-2
 - TekColor Options dialog box 2-6
 - using 2-4
- Macintosh READ ME files, reading 9-24
- Macintosh screen fonts
 - decompressing 7-2
 - installing 7-2
- Macintosh utility files
 - CMYK Sampler 6-12
 - Configuration Page A-4
 - decompressing 2-11
 - Enhanced Quality 5-11
 - Fast Quality 5-11
 - Font Sampler 7-4
 - Format Printer Disk B-2
 - LaserWriter Utility 2-12
 - locating the software 1-2
 - Menu Long A-9
 - Menu Short A-9
 - No SysStart Job B-5
 - PANTONE-Tek Phaser 540 6-12, 6-17
 - printer description files 2-16 to 2-24
 - Raw CMYK Colors 6-11
 - Raw RGB Colors 6-11
 - Reset Printer 9-22
 - RGB Sampler 6-12
 - sending to the printer 2-12 to 2-13
 - Set SysStart Job B-5
 - Setscreen Patch 9-17
 - Standard Quality 5-11
 - Tek Error Handler 9-9
 - Use Any Tray 5-7
 - Use Lower Tray 5-7
 - Use Middle Tray 5-7
 - Use Upper Tray 5-7
 - using 2-10 to 2-15
 - making the best color prints 1-1
 - manual feed printing 5-9
 - media sizes, selecting 5-2 to 5-4
 - media trays
 - problems using the trays 9-24
 - selecting 5-5 to 5-7
 - mediad daemon 4-6
 - Menu Long, Macintosh utility file A-9
 - Menu Short, Macintosh utility file A-9
 - MENULONG.PS, PC utility file A-9
 - MENUSHRT.PS, PC utility file A-9
 - Microsoft Windows NT PostScript printer
 - driver, updating 3-16 to 3-18
 - Microsoft Windows PostScript driver,
 - updating 3-14 to 3-15
 - MIDDTRAY.PS, PC utility file 5-7
 - Monochrome, Tektronix driver setting 6-10
 - mounting a PC diskette 4-6 to 4-8
 - msdosd daemon 4-6

N

- network printing 9-20
- NFS, see PC/NFS 3-8
- No SysStart Job, Macintosh utility file B-5
- None, Tektronix driver setting 6-8
- NOSYSTRT.PS, PC utility file B-5
- NT, Windows NT PostScript printer driver 3-16

O

Options dialog box, Windows 3-10
orientation, image 5-12
Output Face Up, Tektronix driver setting 5-14
output order 5-14

P

Page Setup dialog box, Macintosh 2-5
page sizes, see media sizes, selecting
PageMaker
 printer description files
 (Macintosh) 2-18 to 2-19
 printer description files (PC) 3-27
PANT540.PS, PC utility file 6-17
PANTONE printer files
 Adobe Illustrator
 Macintosh 2-21
 PC 3-29
 Aldus FreeHand
 Macintosh 2-22, 2-24
 PC 3-30
 Aldus PageMaker
 Macintosh 2-24
 PC 3-31
 color charts 6-17
 CorelDRAW! (PC) 3-32
PANTONE-Tek Phaser 540, Macintosh utility
 file 6-12, 6-17
Paper Match printing extension,
 QuickDraw GX driver 8-20
paper sizes, see media sizes
paper trays, see media trays
PC DOS, printing from 3-19
PC utility files
 ADDCTRLD.BAT 3-25
 AIS.PS C-5
 ANYTRAY.PS 5-7
 BIDIR.PS A-14

CMYK.PS 6-12
CONFIG.PS C-2
CTRLD.PS 3-25
DEVPARAM.PS A-11, A-14
ENHANCED.PS 5-11
FAST.PS 5-11
FONTS.PS 7-6
FRMTDISK.PS B-2
HPGL.PS C-5
HPGLPENS.PS C-7
HPGLTEST.PLT C-6
HSB.PS 6-12
INITDISK.PS B-4
 locating the software 1-2
LOWRTRAY.PS 5-7
MENULONG.PS A-9
MENUSHRT.PS A-9
MIDDTRAY.PS 5-7
NOSYSTRT.PS B-5
PANT540.PS 6-17
PRNTCNFG.PS A-4
PRNTNAME.PS 3-23
PSCRIPT.PS C-5
PSTEST.PS C-6
RAWCMYK.PS 6-11
RAWRGB.PS 6-11
RESET.PS 9-22
RGB.PS 6-12
SETNOSPG.PS A-2
SETSCRN.PS 9-17
SETSTPG.PS A-2
STANDARD.PS 5-11
SYSTART.PS B-5
TEKEHAND.PS 9-9
UNIDIR.PS A-14
UPPRTRAY.PC 5-7
 using 3-20
PC/NFS 3-8
PCL5 language C-4

- PDF files, using
 - Macintosh 2-20
 - Windows 3-28
- PDX files, using
 - Macintosh 2-18
 - PC 3-27
- pen colors, HP-GL C-7
- Phaser Print software 4-2
- portrait orientation 5-12
- ports, see communication ports
- PostScript
 - errors 9-8
 - printing errors 9-7
 - timeout C-2
- PostScript files
 - downloading from a workstation 4-1
 - downloading from DOS 3-20
 - downloading from Windows 3-21
- PostScript language C-4
- PostScript Level 2 1-2
- PostScript printer driver (Windows),
 - updating 3-14 to 3-15
- PPD 3.0 files, using
 - Macintosh 2-18
 - PC 3-27
- PPD 4.1 files, using
 - Macintosh 2-19
 - PC 3-27
- Print dialog box
 - Macintosh 2-5
 - QuickDraw GX driver 8-19
- print quality, selecting 5-10 to 5-11
 - Enhanced 5-10
 - Fast 5-10
 - Standard 5-10
- print speed, improving 9-11
- printer
 - renaming 2-15
 - resetting 9-22
 - selecting in Chooser 2-3
- printer description files
 - Aldus FreeHand (Macintosh) 2-18 to 2-19
 - Aldus FreeHand (PC) 3-27
 - Aldus PageMaker (Macintosh) 2-18 to 2-19
 - Aldus PageMaker (PC) 3-27
 - Canvas 2-18
 - Macintosh 2-16 to 2-24
 - PC 3-26 to 3-32
 - QuarkXPress (Macintosh) 2-20
 - QuarkXPress (PC) 3-28
- Printer Setup dialog box, Windows 3-9
- printer status
 - viewing for QuickDraw GX driver 8-23
- Printer Status dialog box, QuickDraw GX
 - driver 8-23
- Printer Utilities command 8-11
- PRINTER.INF, updating Windows NT
 - driver 3-16
- printing a configuration page
 - Macintosh A-4
 - PC A-4
- printing on a network 9-20
- printing press color corrections 6-9
- printing problems 9-12
- PRNTCNFG.PS, PC utility file A-4
- PRNTNAME.PS, PC utility file 3-23
- PSCRIPT.PS, PC utility file C-5
- PSTEST.PS, PC utility file C-6
- PSTEST.PS, PC utility file C-6

Q

- QuarkXPress
 - printer description files (Macintosh) 2-20
 - printer description files (PC) 3-28
- QuickDraw GX driver
 - controlling input trays 8-9
 - controlling printing 8-7
 - creating a desktop printer 8-3
 - downloading PostScript files 8-13
 - downloading utility files 8-11
 - enabling third-party printing extensions 8-9
 - printing from non-QuickDraw GX applications 8-21 to 8-22
 - printing from QuickDraw GX applications 8-16 to 8-20
 - Printing menu 8-7
 - setting a default desktop printer 8-8
 - setting up desktop printers 8-5
 - system requirements 8-1
- QuickDraw GX, disabling 8-22

R

- Raw CMYK Colors, Macintosh utility file 6-11
- Raw RGB Colors, Macintosh utility file 6-11
- RAWCMYK.PS, PC utility file 6-11
- RAWRGB.PS, PC utility file 6-11
- READ ME files, Macintosh, reading 9-24
- renaming the printer
 - Macintosh 2-15
 - PC 3-23
 - workstation 3-23
- Reset Printer, Macintosh utility file 9-22
- RESET.PS, PC utility file 9-22
- resetting the printer 9-22
- RGB Sampler, Macintosh utility file 6-12
- RGB.PS, PC utility file 6-12

S

- screen fonts, Macintosh 7-1 to 7-4
- SCSI hard disk
 - formatting B-2
 - initializing B-4
 - selecting B-1
- selecting
 - color corrections 6-4 to 6-11
 - media sizes (Macintosh) 5-3
 - media sizes (PC) 5-4
 - media trays 5-5 to 5-7
 - print quality 5-10 to 5-11
 - stack order 5-14
- serial port, configuring (PC) A-11 to A-14
- Set Default Printer command 8-8
- Set SysStart Job, Macintosh utility file B-5
- SETNOSPG.PS, PC utility file A-2
- Setscreen Patch, Macintosh utility file 9-17
- SETSCRN.PS, PC utility file 9-17
- SETSTPG.PS, PC utility file A-2
- setting up desktop printers 8-5
- shared printers
 - QuickDraw GX driver 8-14 to 8-15
 - setting up 8-14
 - using 8-15
- simple color conversions 6-11
- Simulate Display, Tektronix driver setting 6-8
- simulating display colors 6-8
- speed, improving print speed 9-11
- stack order 5-14
- standard print quality 5-10
- Standard Quality, Macintosh utility file 5-11
- STANDARD.PS, PC utility file 5-11
- Start Print Queue command 8-7
- starting printing, QuickDraw GX driver 8-7
- Startup page, enable or disable
 - Macintosh A-2
 - PC A-2

- Stop Print Queue command 8-7
- stopping printing, QuickDraw GX driver 8-7
- support, customer 9-1
- SWOP Press, Tektronix driver setting 6-9
- SysStart Job files, using B-5
- SYSTART.PS, PC utility file B-5

T

- technical support 9-1
- Tek Error Handler, Macintosh utility file 9-9
- TekColor Dynamic Correction 6-1
- TekColor Options dialog box, Macintosh 2-6
- TekColor printing extension, QuickDraw GX driver 8-20
- TEKEHAND.PS, PC utility file 9-9
- Tektronix Bulletin Board Service 9-1
- Tektronix information server 9-6
- Tektronix Printer Features dialog box, Windows 3-11
- timeouts
 - job C-2
 - resolving in Windows 9-15
 - wait C-2
 - Windows printer driver 3-7
- Transmission Retry, Windows 3-7
- transparency trays, see media trays
- troubleshooting 9-2

U

- UNIDIR.PS, PC utility file A-14
- UNIX shell scripts
 - addctrld 4-5
 - delctrld 4-5
- updating
 - Microsoft Windows NT PostScript driver 3-16 to 3-18
 - standard Microsoft Windows PostScript driver 3-14 to 3-15
 - Windows NT PostScript driver 3-16
- upgrading AppleTalk Network Software 9-8
- UPPRTRAY.PS, PC utility file 5-7
- Use Any Tray, Macintosh utility file 5-7
- Use Lower Tray, Macintosh utility file 5-7
- Use Middle Tray, Macintosh utility file 5-7
- Use PostScript Level 2 Features, Tektronix driver setting 3-7
- Use Printer Setting, Tektronix driver setting 6-10
- Use Upper Tray, Macintosh utility file 5-7
- using the printer 1-2
- using utility files
 - Macintosh 2-10 to 2-15
 - PC 3-20 to A-14
- utility file and driver interactions 1-2
- utility files
 - locating the software 1-2
 - Macintosh
 - decompressing 2-11
 - sending files to the printer 2-12 to 2-13
 - using 2-10 to 2-15
 - PC
 - sending files to the printer 3-20 to 3-21
 - using 3-20 to 3-32
- using 1-2
- workstation
 - sending files to the printer 4-1

V

Vivid Color, Tektronix driver setting 6-8

W

wait timeout C-2

WIN.INI file, editing 7-5

Windows NT printer driver, updating 3-16

Windows printer driver

- configuring 3-5 to 3-8

- installing on a computer 3-3 to 3-4

- installing on a network 3-12 to 3-13

- locating the software 1-2

- media sizes 5-2

- media trays 5-7

- on-line help 3-2

- Options dialog box 3-10

- Printer Setup dialog box 3-9

- system requirements 3-1

- Tektronix Printer Features dialog box 3-11

- timeouts 3-7

- using 3-9 to 3-13

- using fonts 7-5 to 7-6

workstations

- Phaser Print software 4-2