

Instructions

Tektronix

Moving, Repacking and Shipping a Phaser[®] 560 Color Printer



The Phaser 560 laser printer is certified under IEC 825 as a Class 1 Laser Product. Refer to the printer's User Manual for complete information on safety.

Overview

It is important that you follow the correct procedure before moving or shipping a Phaser 560 laser printer. Complete repacking is required before shipping. For short moves between buildings or in a car to another site, remove the toner cartridges.

Repacking consists of the following basic tasks:

- Remove and repack the media tray(s).
- Remove and repack the four toner cartridges into the toner packing boxes.
- Prepare and secure the imaging unit belts.
- Vacuum the transfer roller / waste bin area of the printer.
- If you do not have the original packaging material, call the Customer Support Hotline at 1-800-835-6100 and order a packaging kit with part number 065-0566-00; it contains the following:

1 Large Shipping Box	1 Front Cushion
1 Wooden Shipping Pallet	1 Rear Cushion
2 Right Toner Cushions	1 Accessory Box
2 Toner Shipping Boxes	2 Left Toner Cushions
1 Accessory Box Shipping Tray	1 Bottom Tray
4 Joints	1 Cardboard Lock
1 Top Tray	1 Instruction Sheet
1 Top Foam Bag	1 Foam Sheet
1 Rebanding Kit	1 Top Cushion

Important tips

Correctly repacking the printer and its accessories reduces the possibility of damaging the printer. The most important challenges include:

- The imaging unit is *very* light-sensitive and can be damaged by extended exposure.
- Toner must be removed from the printer in these locations:
 - Toner cartridges
 - Transfer roller/ waste bin area of the printer

Repacking a Phaser 560 laser printer

Before shipping a Phaser 560 laser printer, always follow these procedures to ensure that the printer is not damaged.

What you need

To repack the printer, you need the following:

- Original packing materials or the packaging kit
- Printer/ Accessories
- Lower Tray Assembly (if applicable)

Note To keep the printer's warranty valid, you must first remove and discard the transfer roller/waste bin, and prepare the imaging unit, then move or ship the printer in its Tektronix shipping box with the appropriate packing materials. In the U.S., call Tektronix at 1-800-835-6100 if you need replacement boxes. Outside the U.S., call your local Tektronix representative. Also, if you are returning the printer for service, call Tektronix for a return authorization number (RMA#).

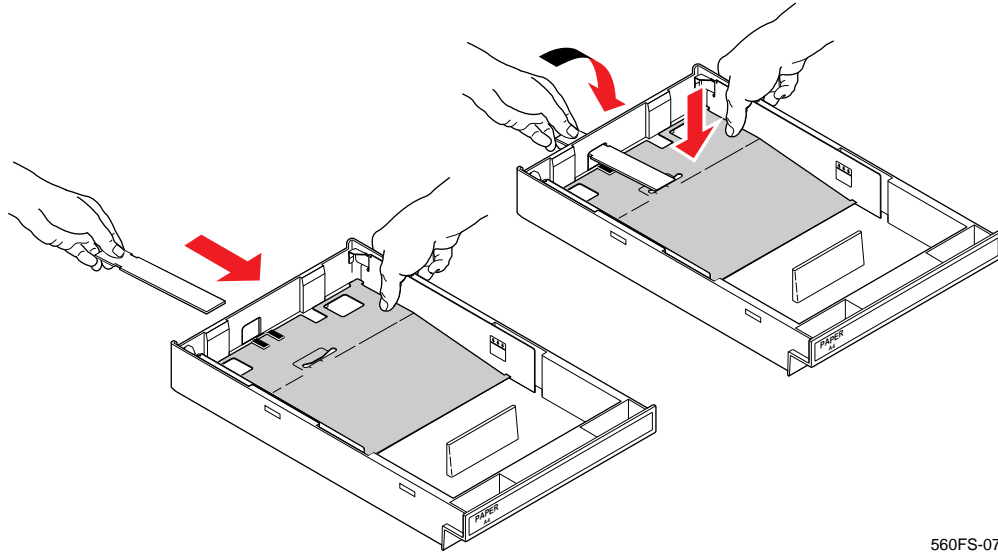
- Two people to lift the printer: without the components, it weighs about 43 kg (94 lbs.) and the Lower Tray Assembly weighs about 14 kg (31 lbs.).
- Between 30 to 60 minutes, depending on repacking experience.
- Toner vacuum. You can use any vacuum specifically designed for use with laser printer toner, or obtain one from Tektronix.

Note Make sure that you use a vacuum specifically designed for use with laser printer toner; regular household or shop vacuums cannot contain toner dust.

Toner Vacuums

Part number	Vacuum
003-1496-00	115-Volt vacuum
003-1497-00	220/240-Volt vacuum
003-1498-00	Toner filter for the vacuums

1. Turn off the power; remove the power cord and all cables.
2. Remove the media tray(s) and install cardboard locks.

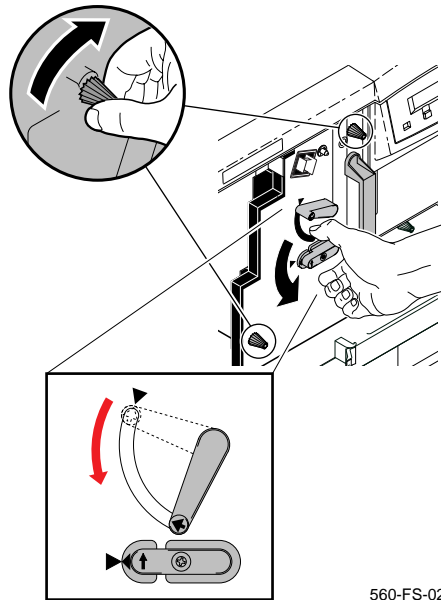


560FS-07

- Place the cardboard lock into one media tray; re-insert that tray into the printer.
- If you have other media trays, put a cardboard lock into each of them, then repack the media trays for shipping or storage in their packing boxes.

3. Prepare the imaging unit.

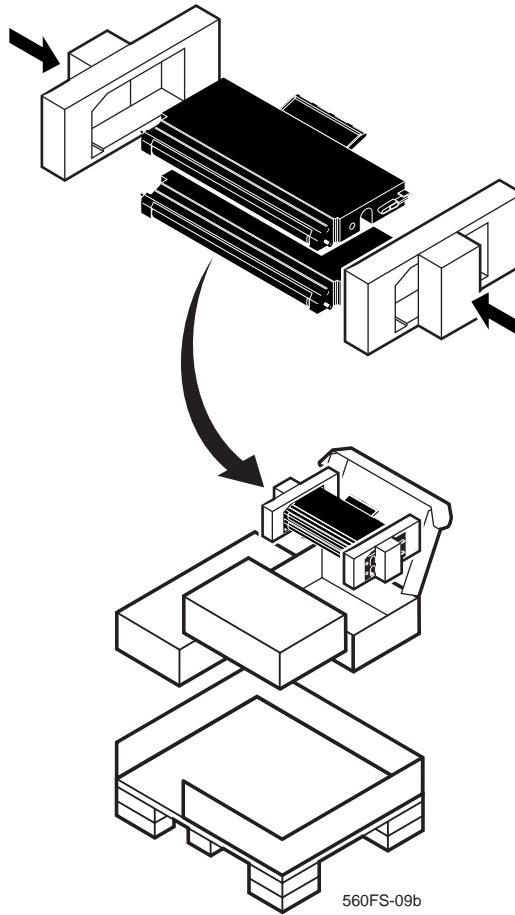
- Open the printer's front door.
- Make sure that the two small knobs are tight; turn them *clockwise* to tighten.
- Turn the upper lever 90° *counterclockwise*.
- Close the printer's door.



560-FS-02

4. Remove and repack the toner cartridges.

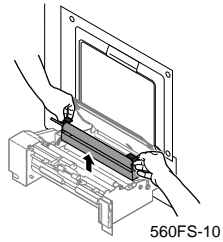
- Be careful not to touch the roller with your fingers (the roller edge faces you in the illustration).
- Repeat these steps for all 4 cartridges.



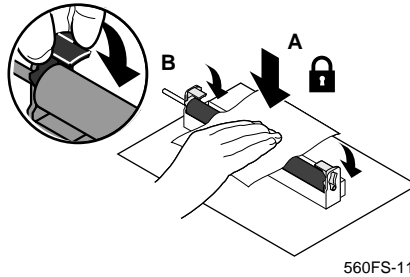
5. Remove and discard the transfer roller/waste bin.

Caution Leaving the transfer roller/waste bin inside the printer may damage the printer.

- Pull out the paper transport (shown in dotted outline).
- Remove the transfer roller/waste bin.



- Use a piece of paper to keep your hands clean, and push down on the transfer roller (A), and lock (B) the waste bin to prevent toner spillage.

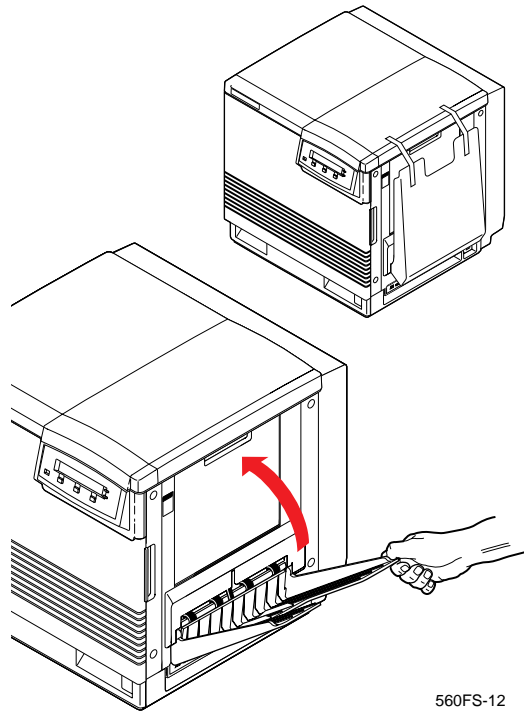


- After locking, discard the transfer roller/waste bin.

Note You can order from your local Tektronix dealer a transfer kit (part number 016-1533-00) to replace the transfer roller/waste bin that you removed and discarded.

6. Vacuum the transfer roller/waste bin area of the printer.
 - Use any vacuum specifically designed for use with laser printer toner.

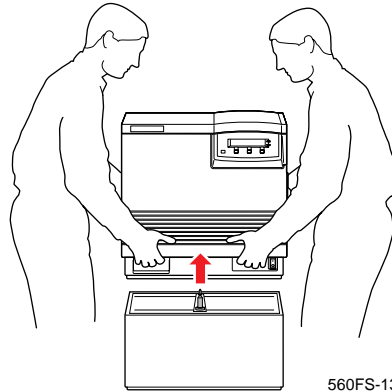
7. Close all doors and secure them with adhesive tape.



560FS-12

8. If your printer has a Lower Tray Assembly, detach it:
- Lift the printer up and away from the Lower Tray Assembly.
 - Repack the Lower Tray Assembly in its shipping box.

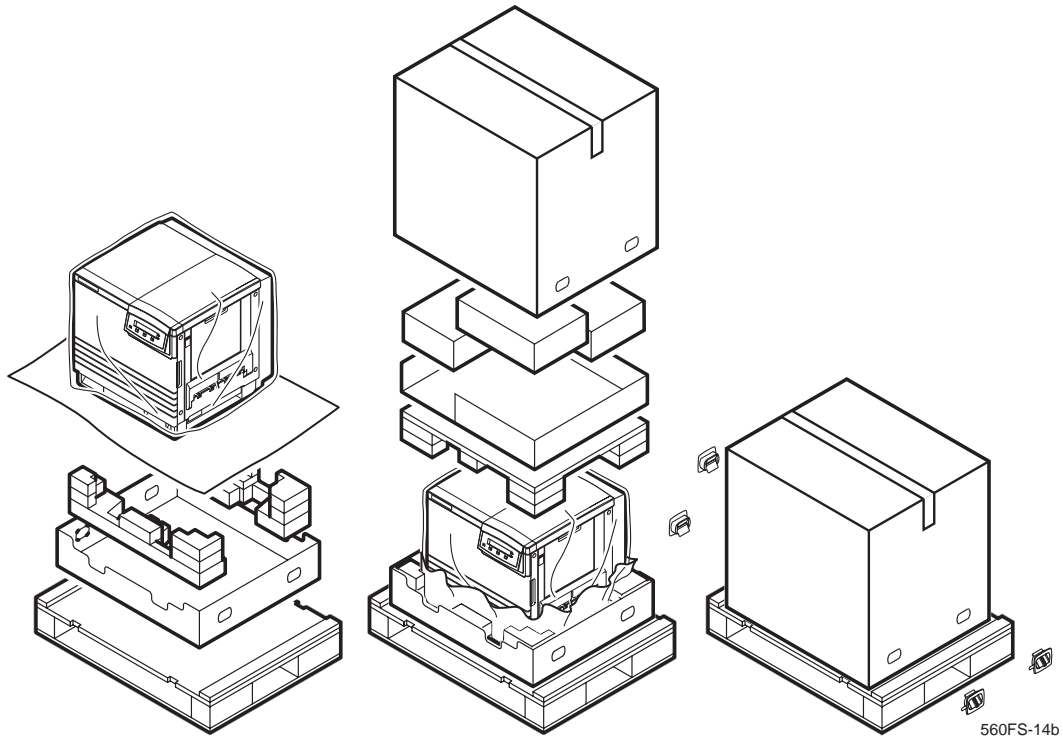
Warning The printer weighs approximately 43 kg (94 lbs.) with the components removed; the Lower Tray Assembly weighs approximately 14 kg (31 lbs.). Observe standard safety precautions for lifting heavy objects.



560FS-13

9. Repack the printer and accessories in the packing boxes.

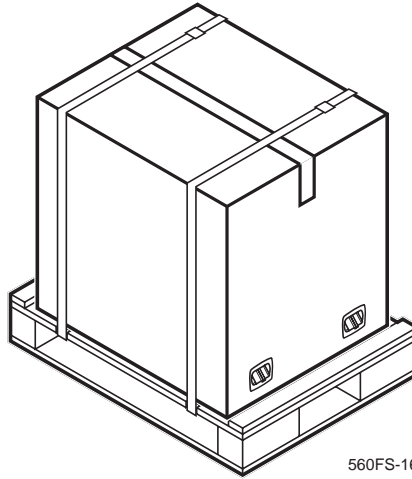
- Be sure to include the power cord, cables, manuals, driver diskettes, and CD-ROMs.



Note If you are shipping the printer to Tektronix for repair, follow the instructions on page 13, “Shipping the printer for repair.”

10. Band the shipping boxes.

- Follow the instructions that are shipped with the rebanding kit (the rebanding kit is part of the packaging kit you can order, as specified at the beginning of this section).



560FS-16

Shipping the printer for repair

If you are shipping the printer to Tektronix for repair service, call 1-800-835-6100 for a return authorization number (RMA#).

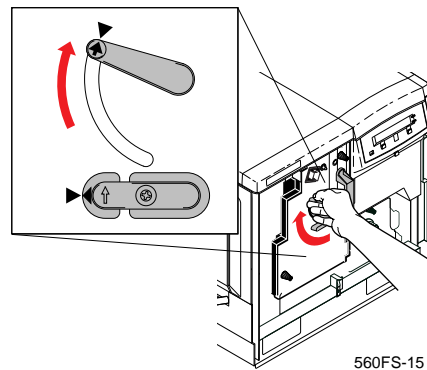
- Write the RMA# on a sheet of paper. Attach this sheet to the top of the printer with adhesive tape.
- Write the RMA# on the outside of all cartons.
- Ship the printer (and consumables and accessories) to the following address:

**CPID-Depot Repair
Tektronix M/S 83-172
266000 SW Parkway
Wilsonville, OR 97070**

Unpacking

Follow the procedures detailed in the **User Manual** or the **Quick-Start Installation**. If you have any problems, in the U.S., contact Technical Support at **1-800-835-6100**. Outside the U.S., contact your local Tektronix representative.

1. Install the 4 toner cartridges.
2. Close the toner access door.
3. Prepare the imaging unit.
 - Open the printer's front door.
 - Turn the upper lever *clockwise* to align the lever's triangles with the triangle on the surface of the imaging unit.



- Close the printer's front door.

4. Connect the power cord and cables.

Note Wait 5 minutes before turning on the power to the printer; this allows the imaging unit recovery time from exposure to light.

5. Make a few test prints to clear any excess toner.