

Customer Release Notes



Phaser 6000

Firmware Release version 1.62.0

Release Date: August 2012

Software Release Details

Component	Version
Firmware	1.62.0

Purpose

This firmware release contains the following fixes:

- improved the wording for some error messages
- corrected an issue that resulted in "116-343 ASIC Fail" error
- translation improvements
- improved sensitivity for fuser adjustments made in the Printer Settings Utility
- fixed a problem where the machine may generate an error when powered on for the first time

I. Installation Notes

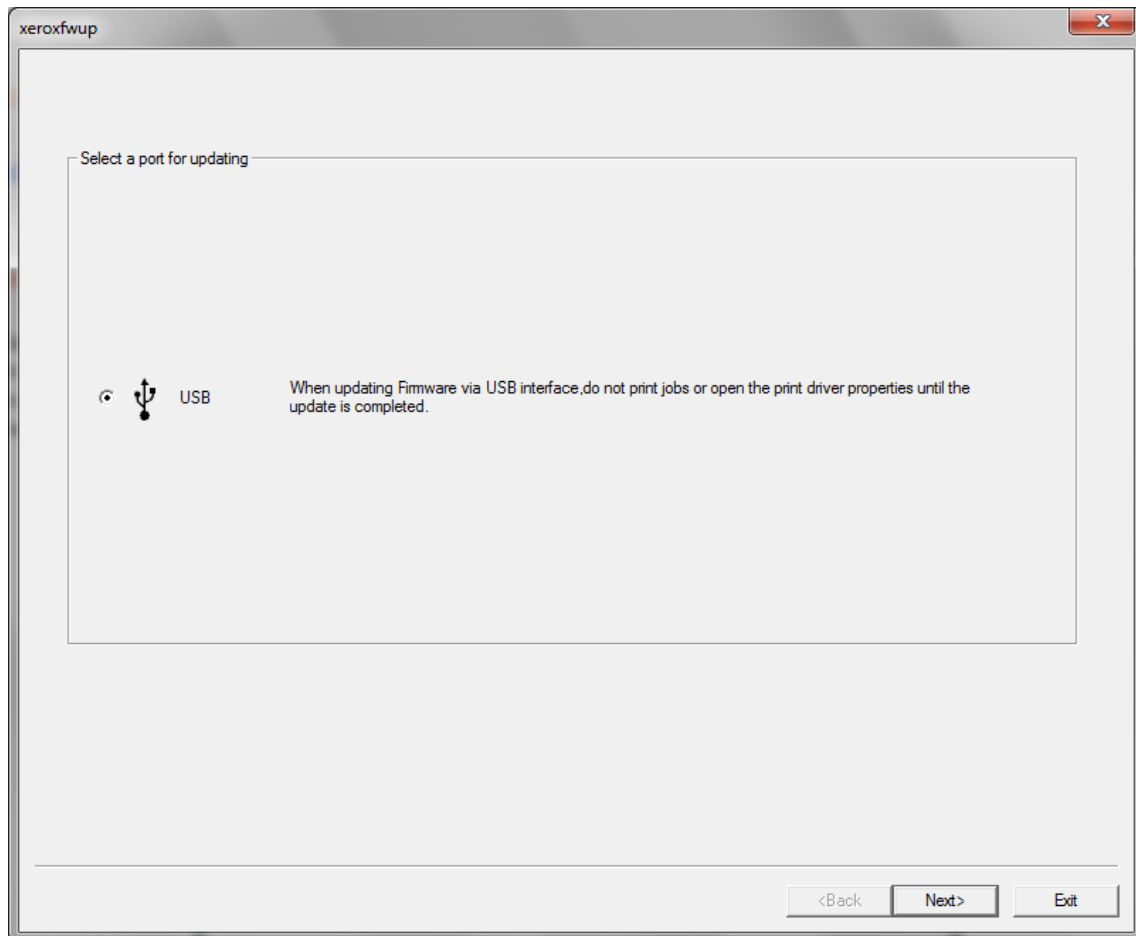
The Firmware Release is located at Drivers and Download page for the Phaser 6000 at Xerox.com

Firmware Upgrade Process

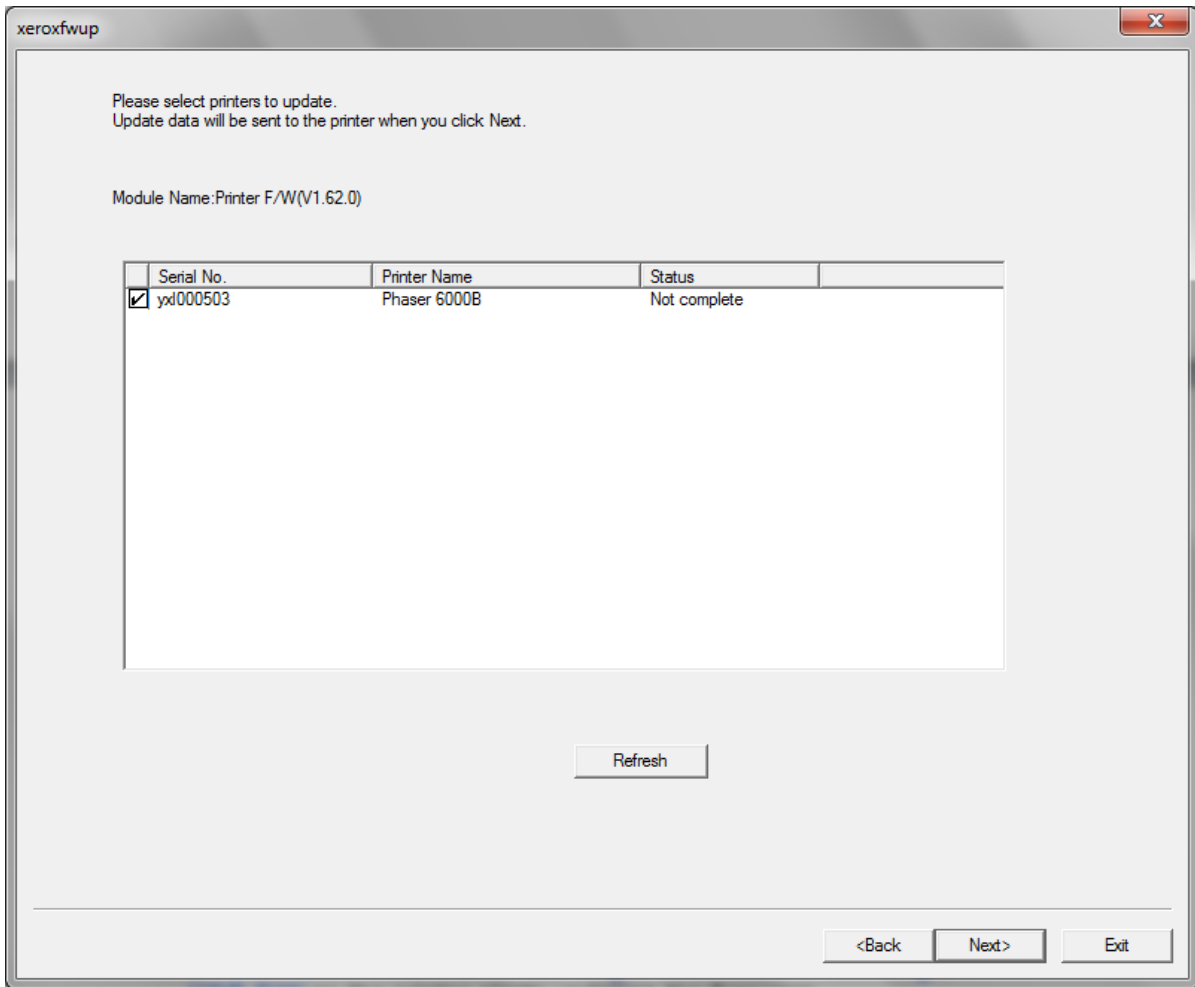
Windows Operating Systems

Caution: Do Not Reboot or Turn Off the printer during the firmware update process. The printer will automatically reboot when finished downloading the firmware.

1. Make sure the printer is powered on and connected over USB.
2. From the Printer Settings Utility, print a Printer Settings report to document the current printer settings.
3. On the computer, double-click on the **Xeroxfwup.exe** icon located in the firmware folder.
4. The **xeroxfwup** window displaying USB connection will open. Press the **Next** button



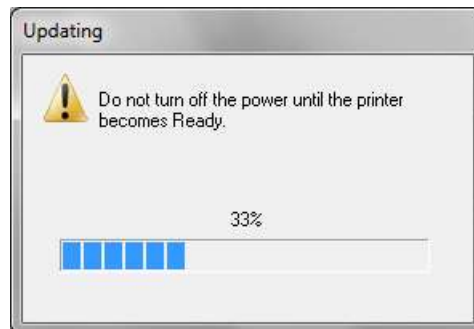
5. The **xeroxfwup** window with the printer serial number is displayed. Check the checkbox next to your listed printer. Click the **Next** button



- The Firmware will start downloading to your printer.

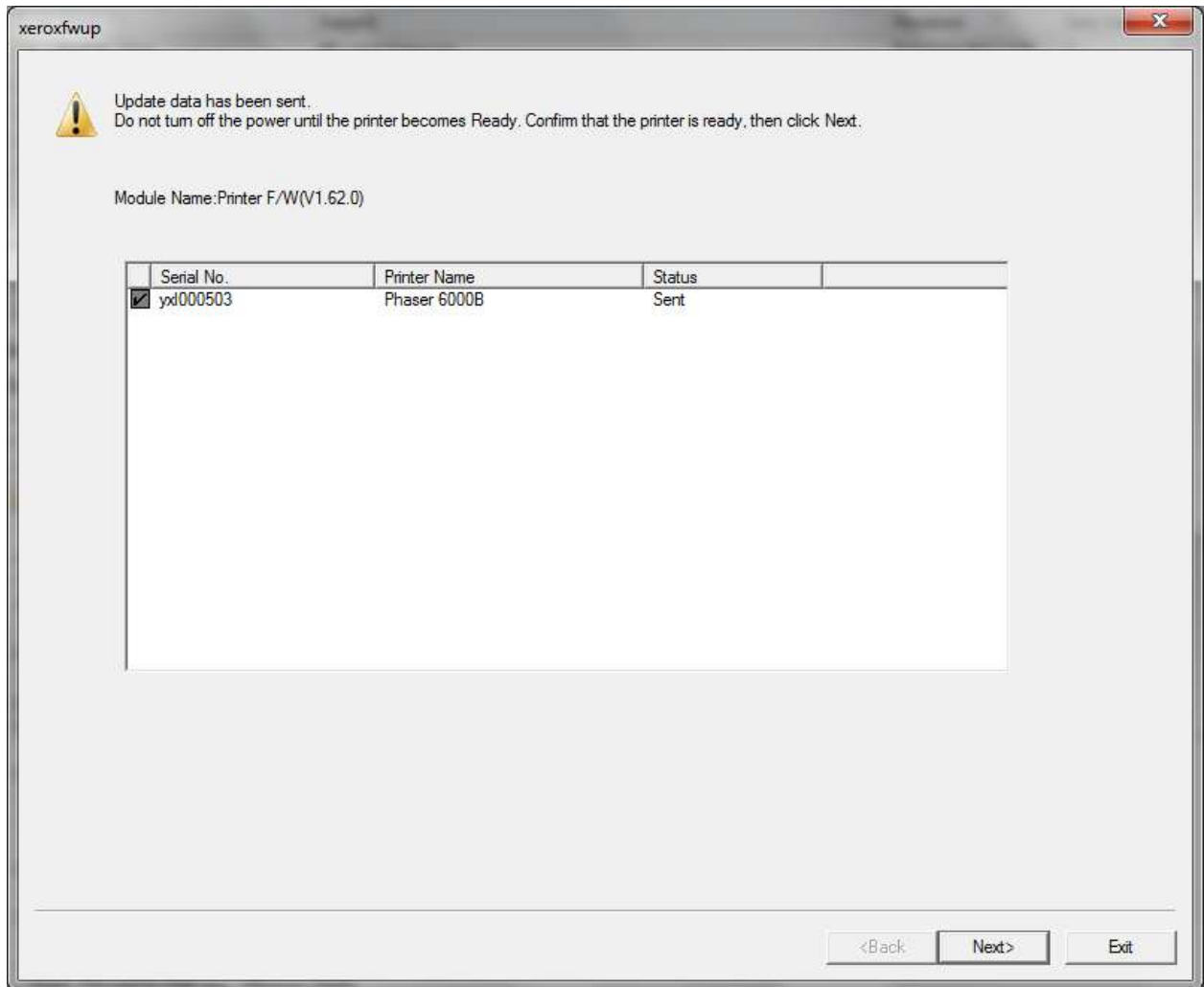


- After the file is sent, the following message will be displayed:

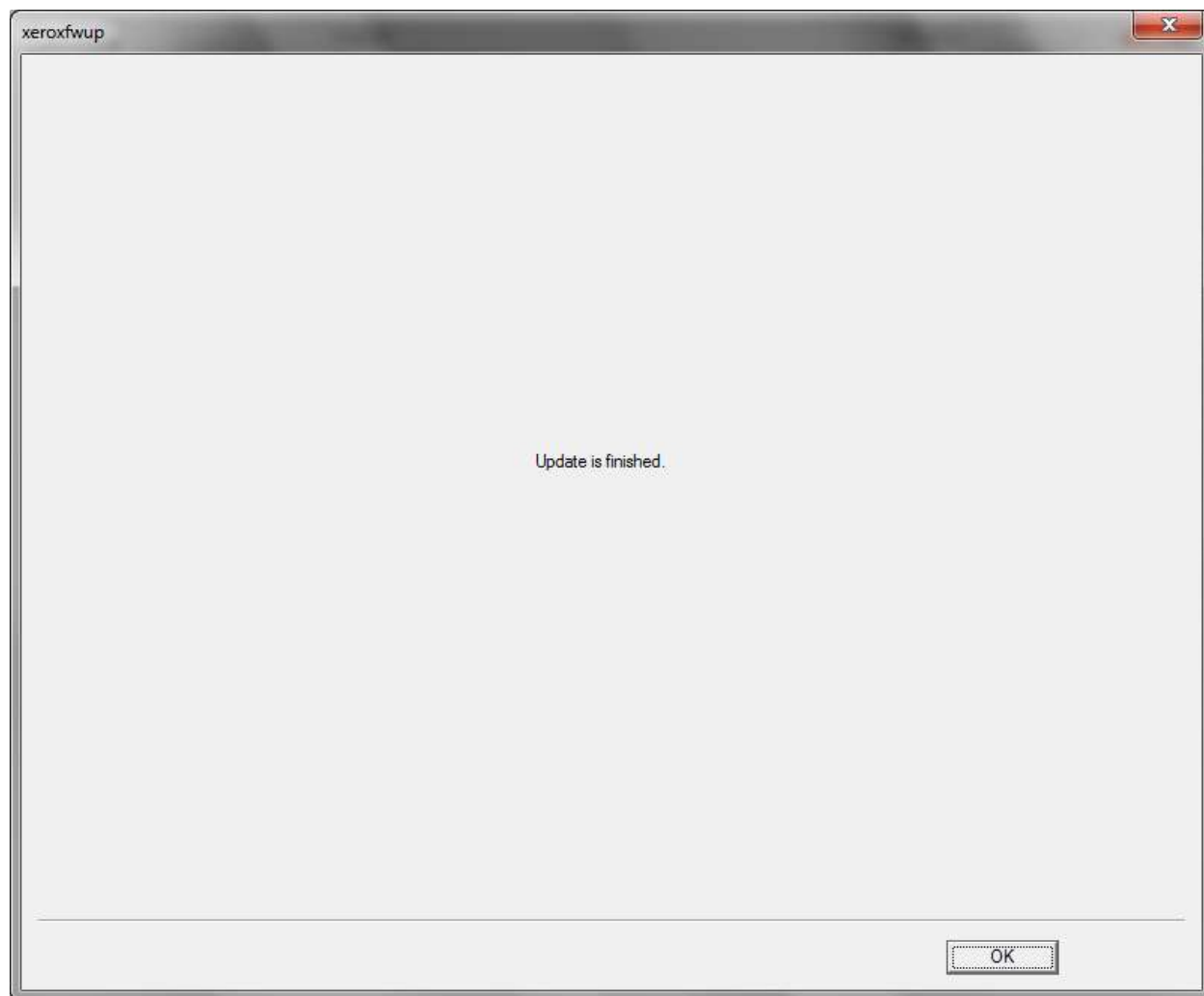


- The green LED on the printer's front panel will blink while the printer is being updated.
- When the update is completed, the printer will automatically reboot.

6. Wait for the printer to finish rebooting. In the **xeroxfwup** window, press the **Next** button



7. After the firmware upgrade is complete, click the **OK** button to exit the firmware upgrade tool.

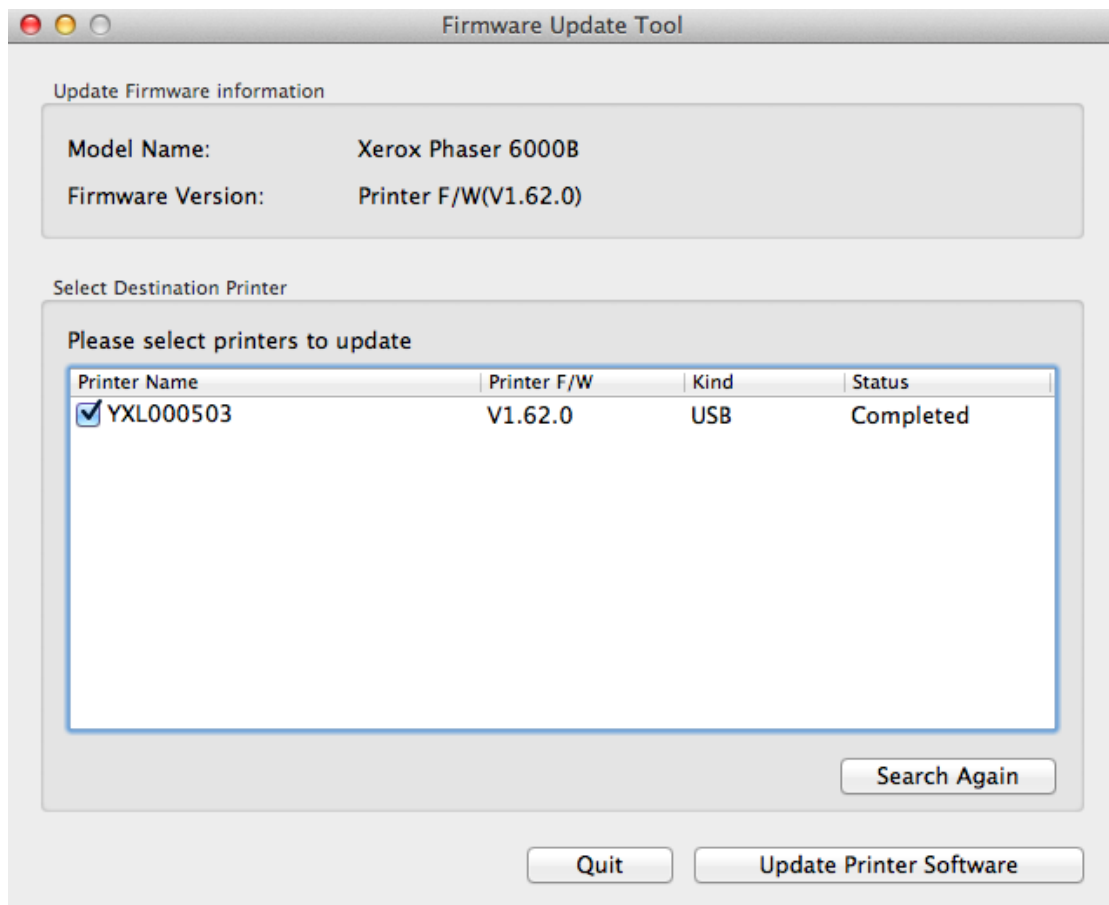


8. From the Printer Settings Utility, print a Printer Settings report to verify that the printer's firmware was updated to the new version.

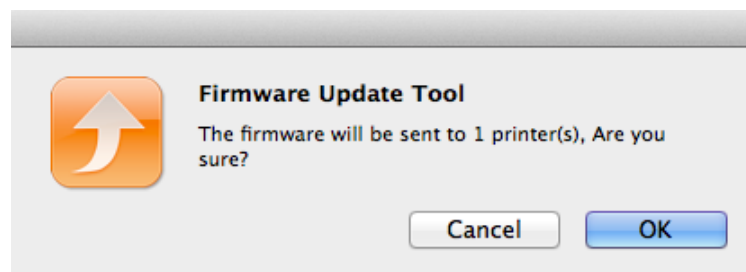
Mac Operating Systems

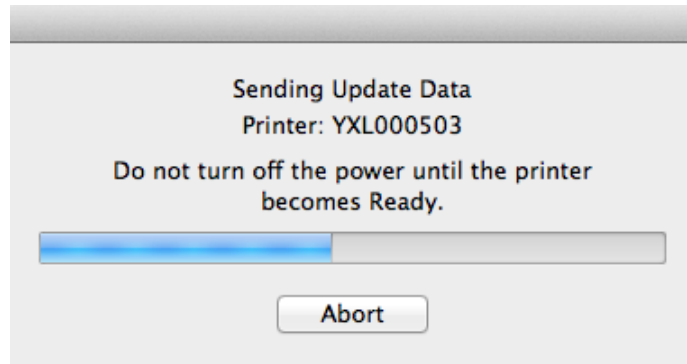
Caution: Do Not Reboot or Turn Off the printer during the firmware update process. The printer will automatically reboot when finished downloading the firmware.

1. Make sure the printer is powered on and connected over network or USB.
2. From the Printer Settings Utility, print a Printer Settings report to document the current printer settings.
3. On the computer, double-click on the **Phaser_6000_Firmware_v1.62.0.app** icon located in the firmware folder.
4. The **Firmware Update Tool** window with the printer model name and firmware version is displayed.
5. Check the box next to your printer. Press the **Update Printer Software** button.

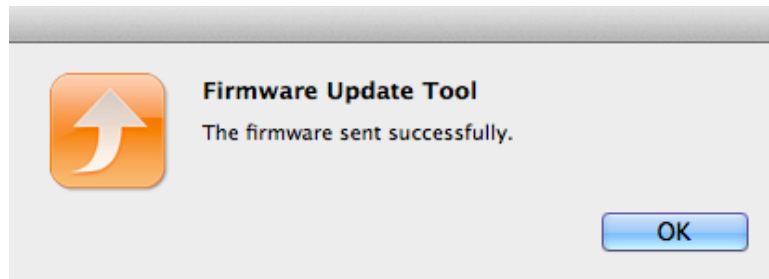


6. Press the **OK** button to begin sending the firmware update to the printer.

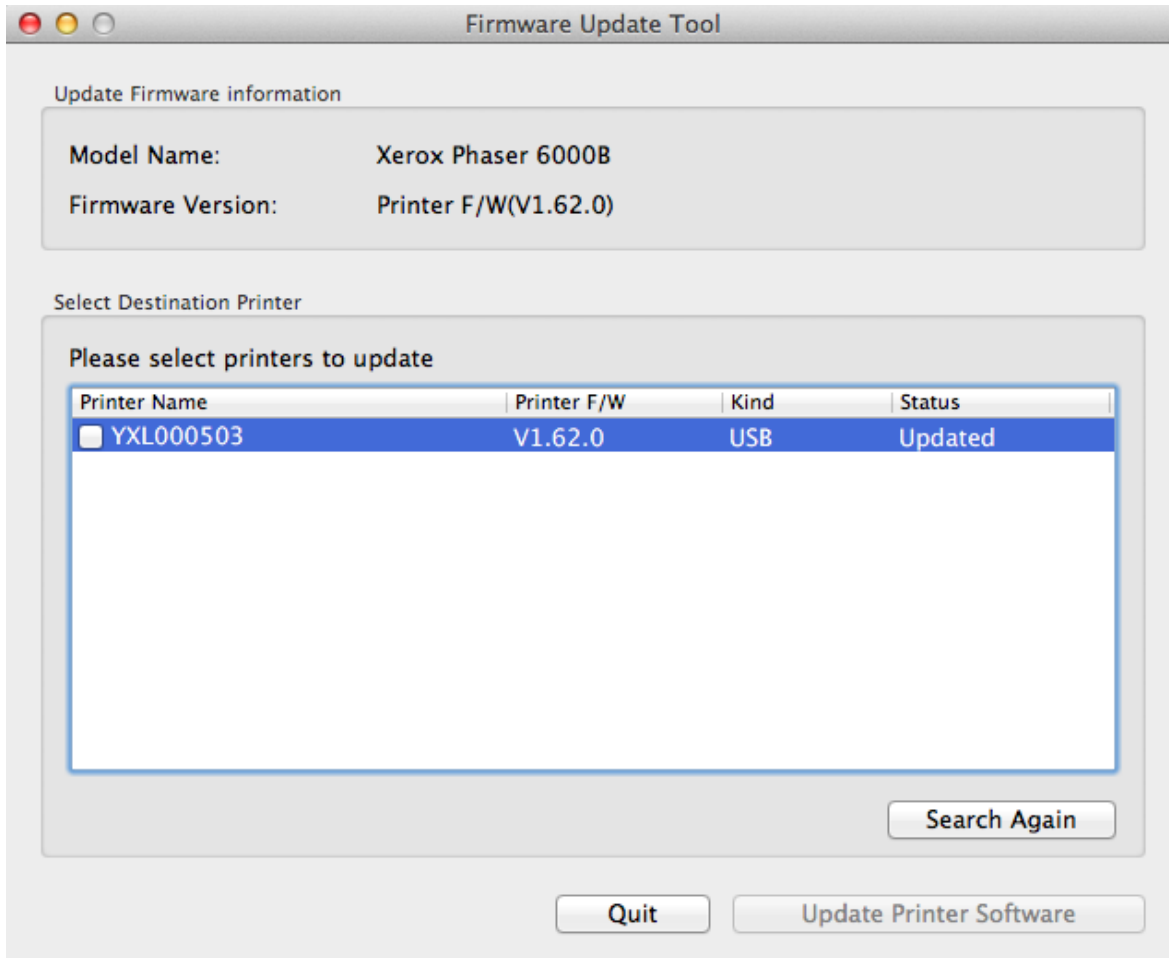




7. After the firmware sent successfully message appears, press the **OK** button to return to the main Firmware Update Tool window.



8. Press the **Quit** button to exit the Firmware Update Tool.



9. From the Printer Settings Utility, print a Printer Settings report to verify that the printer's firmware was updated to the new version.