

## Windows Firmware Update Process

**Caution: Do Not Reboot or Turn Off the printer during the firmware update process. The printer will automatically reboot when finished downloading the firmware.**

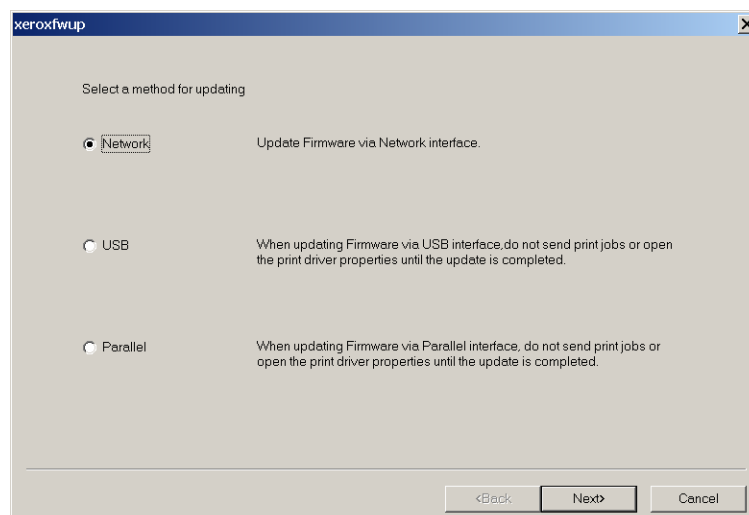
### MPC-F/W (IPv6 support version) Update Procedure

To update the MPC firmware, 3 different files must be executed, as listed below. Details for downloading the files are described below.

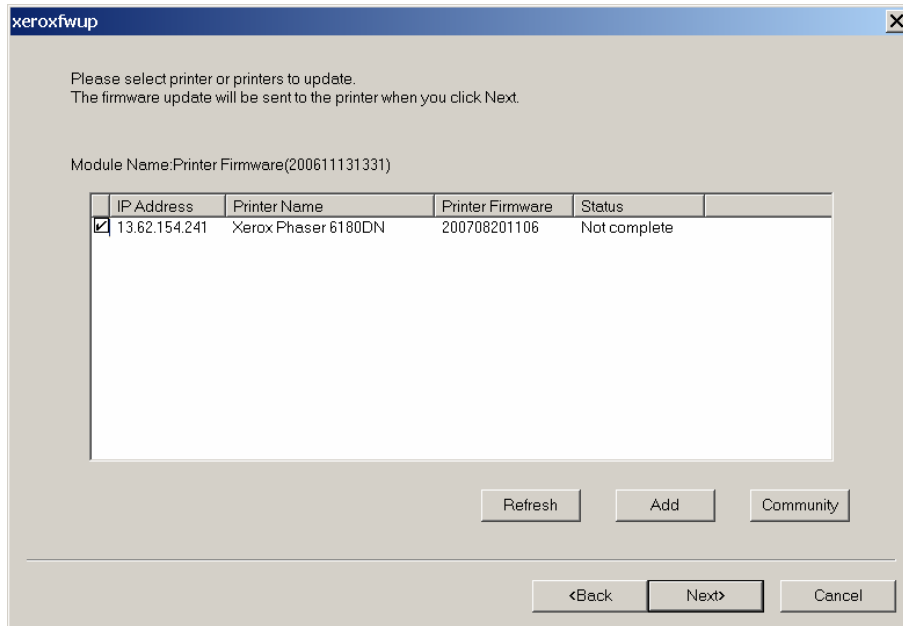
1. Start the machine normally.
2. Run "Xeroxfwup.exe" in the folder "Procedure 1" to update MPC-F/W.  
When completed, the machine restarts.
3. Run "Xeroxfwup.exe" in the folder "Procedure 2" to update MPC-F/W.  
When completed, the machine restarts.
4. Run "Xeroxfwup.exe" in the folder "Procedure 3" to update MPC-F/W.  
When completed, the machine restarts.
5. The procedure is completed.

### Process for running "Xeroxfwup.exe"

1. Ensure your appropriate downloading option (Network, USB, or Parallel) is available and connected.
2. Double-click on the **xeroxfwup.exe** icon located in your printer directory.
3. The **xeroxfwup** window with the connection options is displayed. Three connections are available for updating the firmware (some products will not have a Parallel interface).



- **For Network connection:**
  - Select **Network** and click the **Next** button.
  - If your printer IP address is listed, check the checkbox next to your printer. Click the **Next** button.



Please select printer or printers to update.  
The firmware update will be sent to the printer when you click Next.

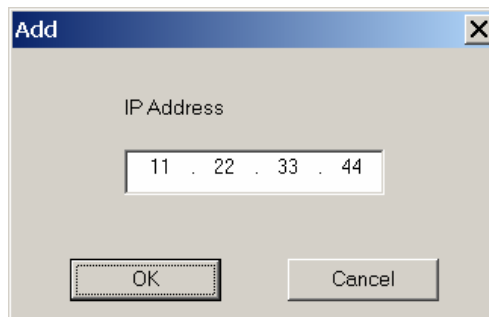
Module Name:Printer Firmware(200611131331)

	IP Address	Printer Name	Printer Firmware	Status
<input checked="" type="checkbox"/>	13.62.154.241	Xerox Phaser 6180DN	200708201106	Not complete

Refresh Add Community

<Back Next> Cancel

- If your printer IP address is not listed, click the **Add** button.



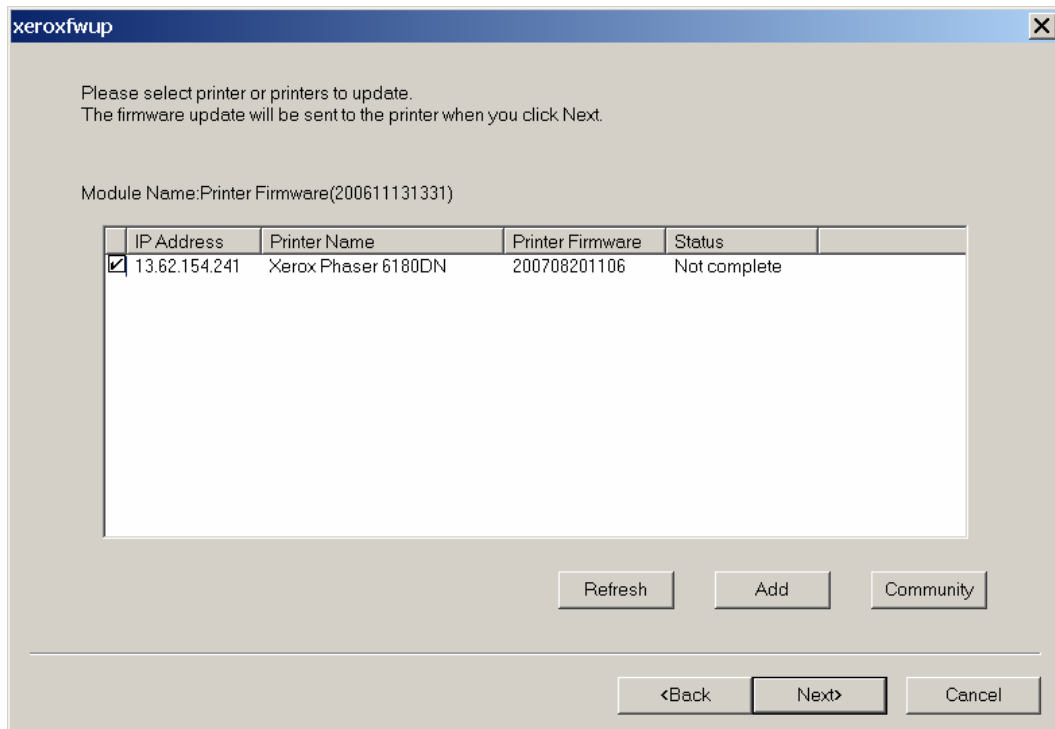
Add

IP Address

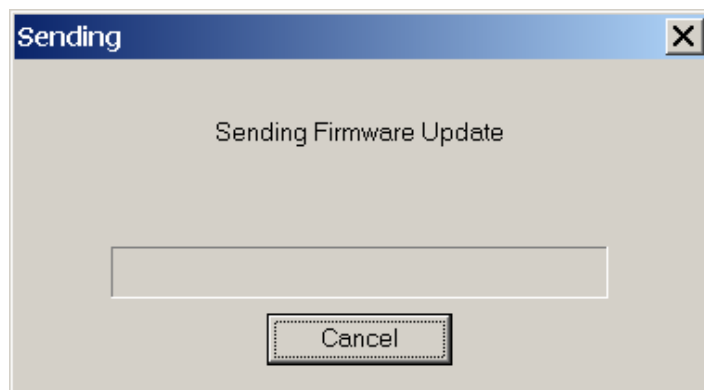
11 . 22 . 33 . 44

OK Cancel

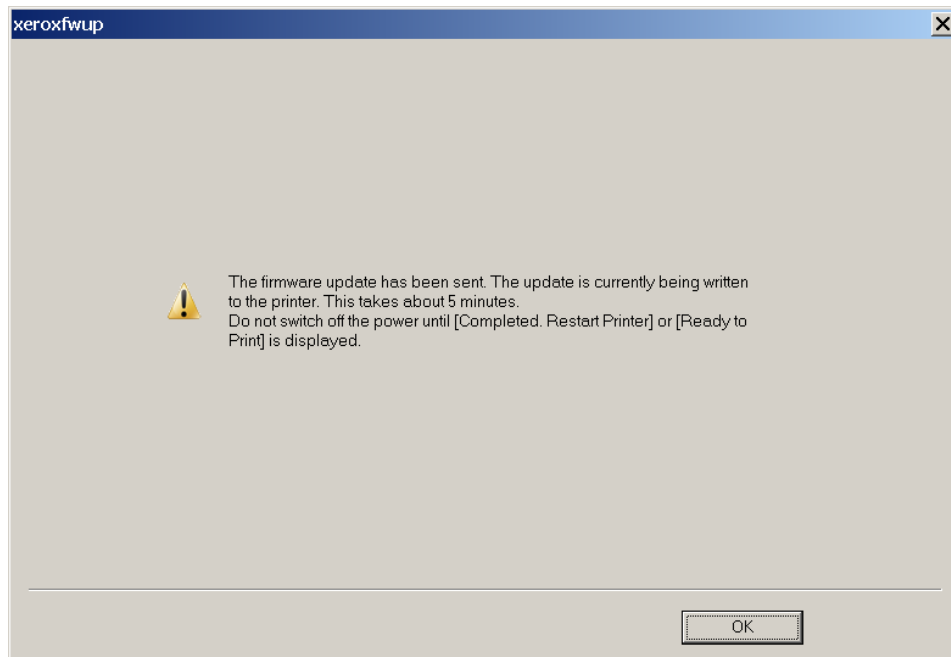
- Enter your printer IP address and click the **OK** button. Check the checkbox next to your printer IP address and click the **Next** button.



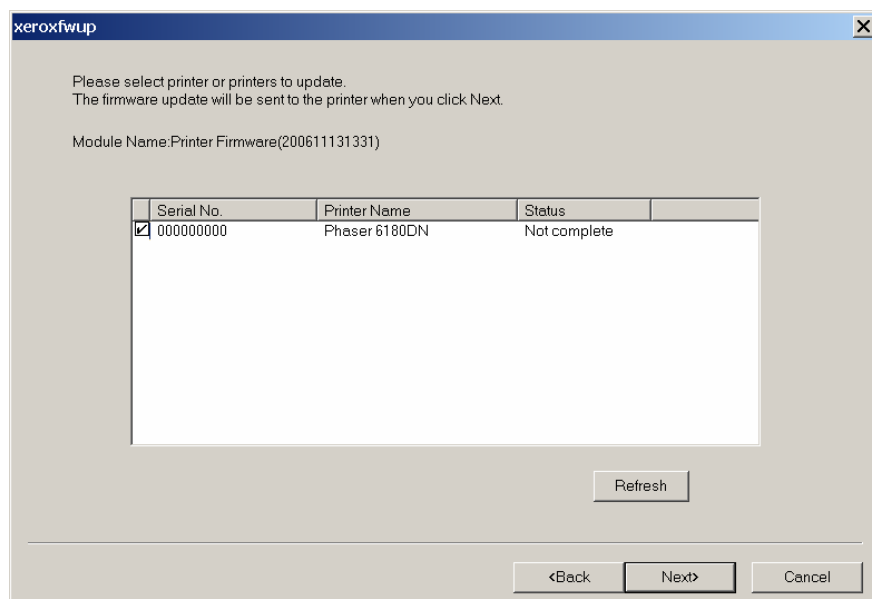
- The Firmware will start downloading to your printer.



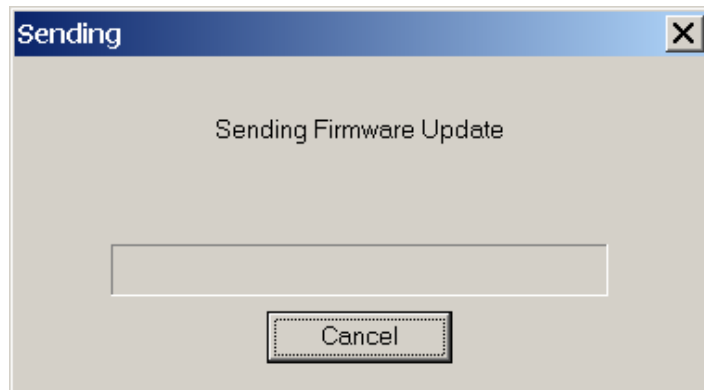
- On the printer Control Panel, the following messages are displayed:  
**Receiving data Port 9100 AIOC --> Receiving data Port 9100 F/W --> Please wait Port 9100 F/W --> Writing... Port 9100 AIOC --> Writing... Port 9100 F/W** as the printer starts updating the firmware.
- When the process is completed, the **Please wait... --> Ready** messages are displayed on the printer Control Panel.



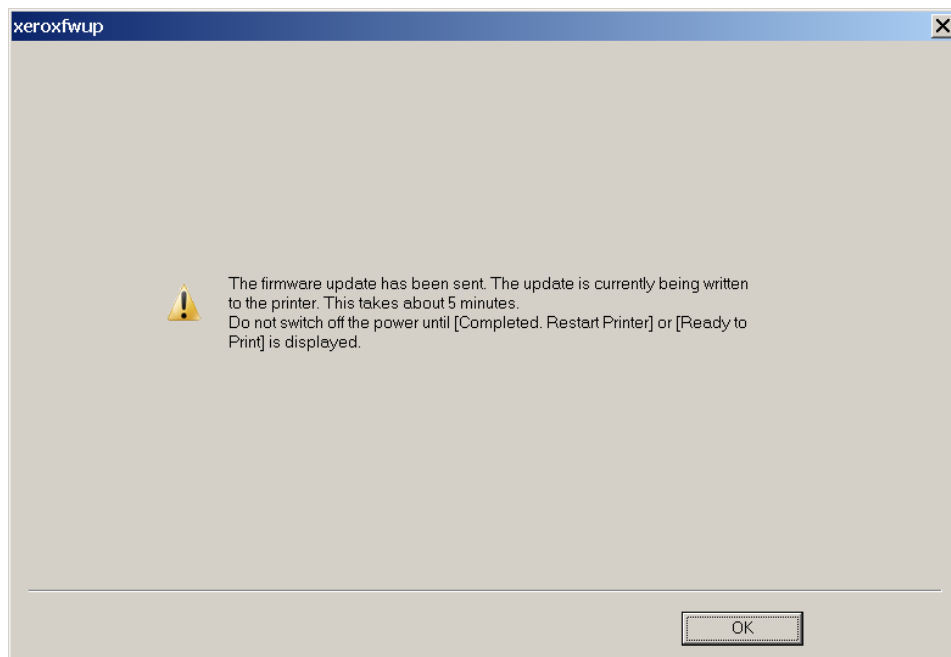
- On your computer, verify that the firmware update has been completed - a “**The firmware update has been sent**” message is displayed and **Completed** is displayed under the **Status** column. Click the **Next** button. Click the **OK** button.
- Print the printer Configuration page from your printer’s front panel and verify the Firmware Version information.
- **For USB connection:**
  - Select **USB** and click the **Next** button.
  - The **xeroxfwup** window with the printer serial number is displayed. Check the checkbox next to your listed printer. Click the **Next** button.



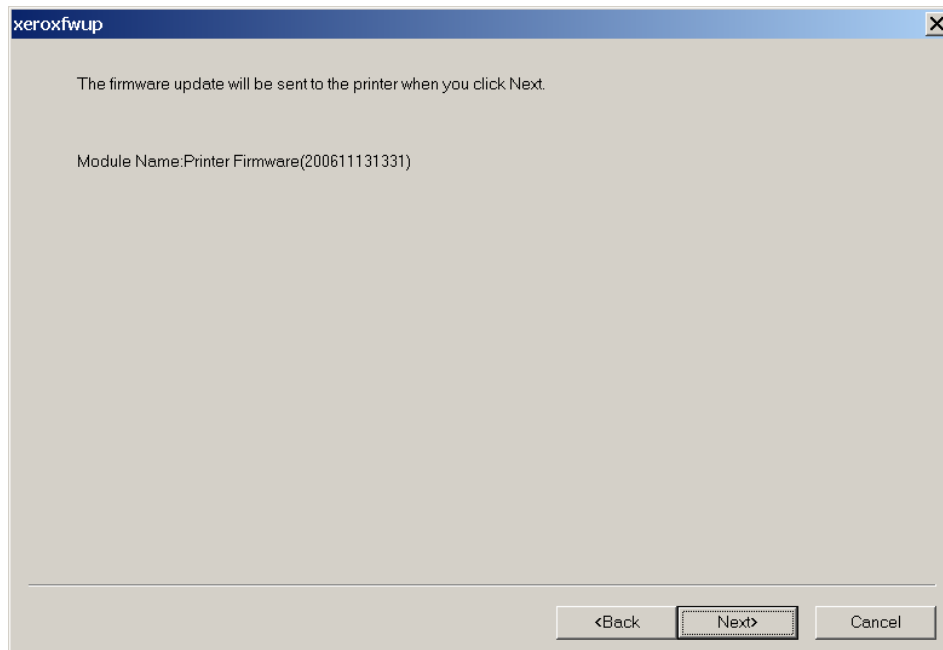
- The Firmware will start downloading to your printer.



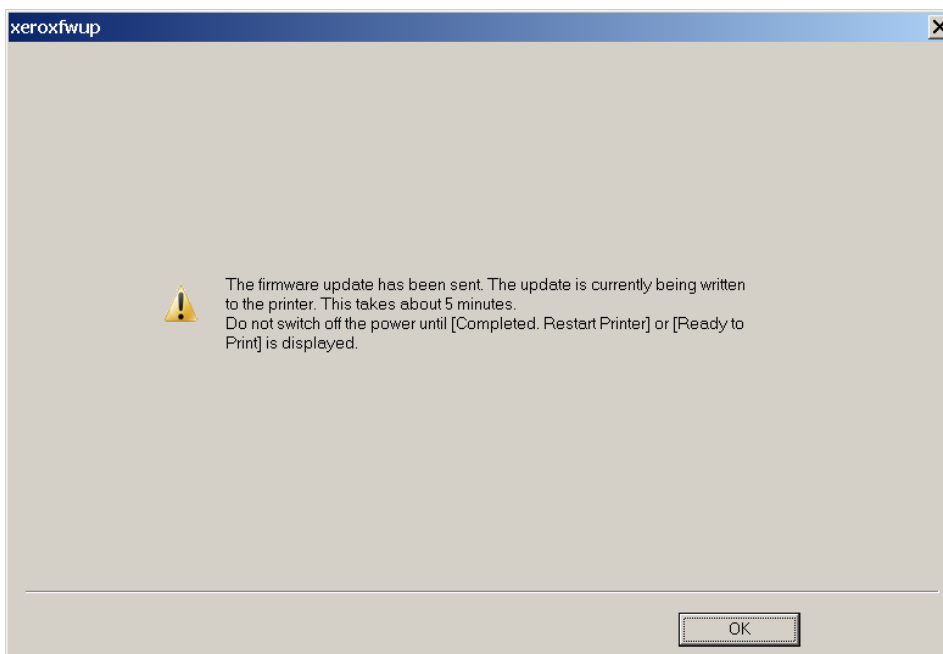
- On the printer Control Panel, the following messages are displayed:  
**Receiving data USB AIOC** --> **Receiving data USB F/W** -->  
**Please wait... USB F/W** --> **Writing... USB AIOC** --> **Writing... USB F/W** as the printer starts updating the firmware.
- When the process is completed, the **Please wait...** --> **Ready** messages are displayed on the printer Control Panel.



- On your computer, verify that the firmware update has been completed - a "**The firmware update has been sent**" message is displayed and **Completed** is displayed under the **Status** column. Click the **Next** button. Click the **OK** button.
- Print the printer Configuration page from your printer's front panel and verify the Firmware Version information.
- **For Parallel connection (for those products with a Parallel connection):**
  - Select **Parallel** and click the **Next** button.
  - The **xeroxfwup** window is displayed. Click the **Next** button.



- On the printer Control Panel, the following messages are displayed  
**Receiving data Parallel AIOC --> Receiving data Parallel F/W --> Please wait Parallel F/W --> Writing... Parallel AIOC -->Writing... Parallel F/W --> Completed...** as the printer starts updating the firmware.
- When the process is completed, the **Please wait...** --> **Ready** messages are displayed on the printer Control Panel.



- On your computer, verify that the firmware update has been completed - a **"The firmware update has been sent"** message is displayed and **Completed** is displayed under the **Status** column. Click the **Next** button. Click the **OK** button.
- Print the printer Configuration page from your printer's front panel and verify the Firmware Version information.