

Release date: 1 July 2009

# Technical bulletin

## Installing the patch for Creo CX700 version 1.5 Calibration Patch

### Problem description

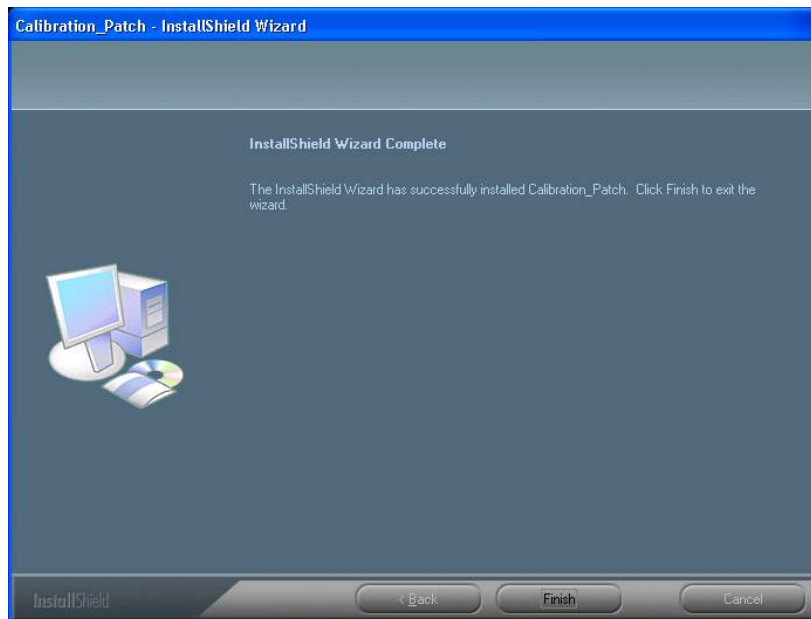
Creo CX700 version 1.5 cannot produce calibration chart when machine finisher's configuration is with OCT. Spar 509105711.

### Solution

Install the Calibration Patch

### Installation Procedure

1. Exit the CX7000 version 1.5 application
2. Copy the **Calibration\_Patch.zip** file to the CX700 DFE and extract it,
3. Double-click the **Calibration\_Patch.exe** file.



4. In the InstallShield Wizard, click **Finish**.
5. Start the application
6. Open Help - About and make sure the update **Calibration\_Patch 1-Jul-2009** is there.

## Uninstall the Calibration Patch

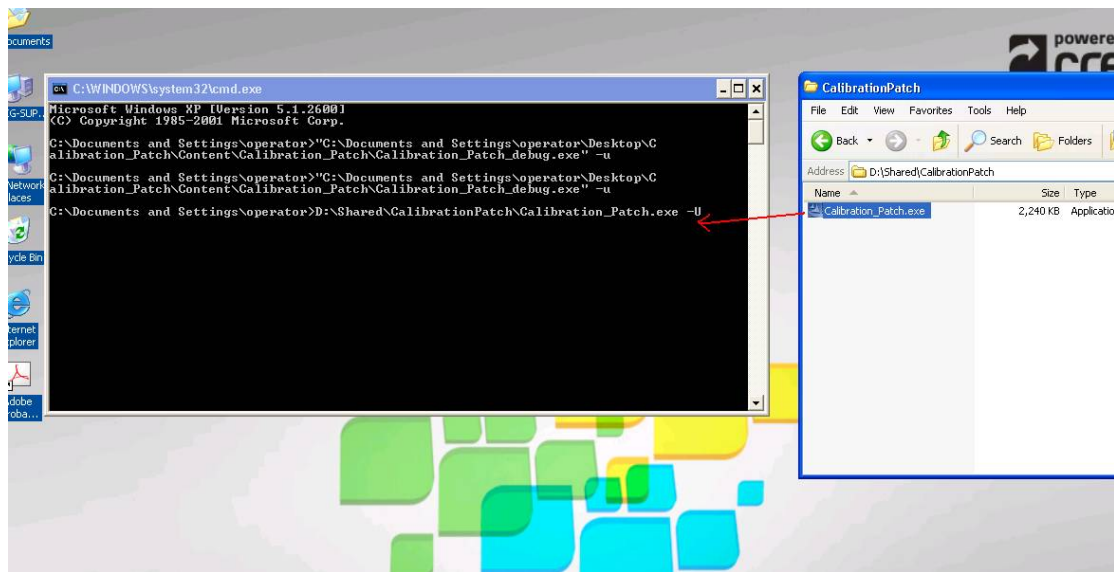
Log off the CX700.

Copy the **Calibration\_Patch .exe** to the CX700.

Open the Windows XP command line, Open Start → Run type CMD then Enter.

Drag the Calibration\_Patch.exe to the command line and add the -U switch as the below screen capture and click Enter.

In the InstallShield Wizard, click Finish



## **About Print On-Demand Solutions Group**

The Print On-Demand Solutions Group develops and supports high-performance CREO Color Servers and key workflow solutions for a range of digital production printers and presses. It also develops advanced on-demand applications to enable the creation of personalized direct mail, targeted catalogs and other powerful one-to-one marketing communications tools.

This independent unit of Kodak's Graphic Communications Group will continue to help its customers leverage their investment in digital printing.

For more information about CREO Color Servers, visit [www.creoservers.com](http://www.creoservers.com)

(c) Kodak, 2008. All rights reserved. Creo is a trademark of Eastman Kodak Company. Adobe, Acrobat, Adobe Illustrator, Distiller, Photoshop, PostScript, and PageMaker are trademarks of Adobe Systems Incorporated. Apple, AppleShare, AppleTalk, iMac, ImageWriter, LaserWriter, Mac OS, Power Macintosh, and TrueType are registered trademarks of Apple Computer, Inc. Macintosh is a trademark of Apple Computer, Inc., registered in the U.S.A. and other countries. PANTONE, Hexachrome, PANTONE Goe, PANTONE Hexachrome, and PANTONE MATCHING SYSTEM are the property of Pantone, Inc. PEARL, PEARLsetter, PEARLhdp, PEARLdry, and PEARLgold are registered trademarks of Presstek, Inc. Technical data subject to change without notice.