

Internal: Spar# 051847179  
Release date: November 10, 2009

## Technical bulletin

# Manual Duplex 300gsm Patch for the CX Print Server for the Xerox 700 Digital Color Press

## Overview

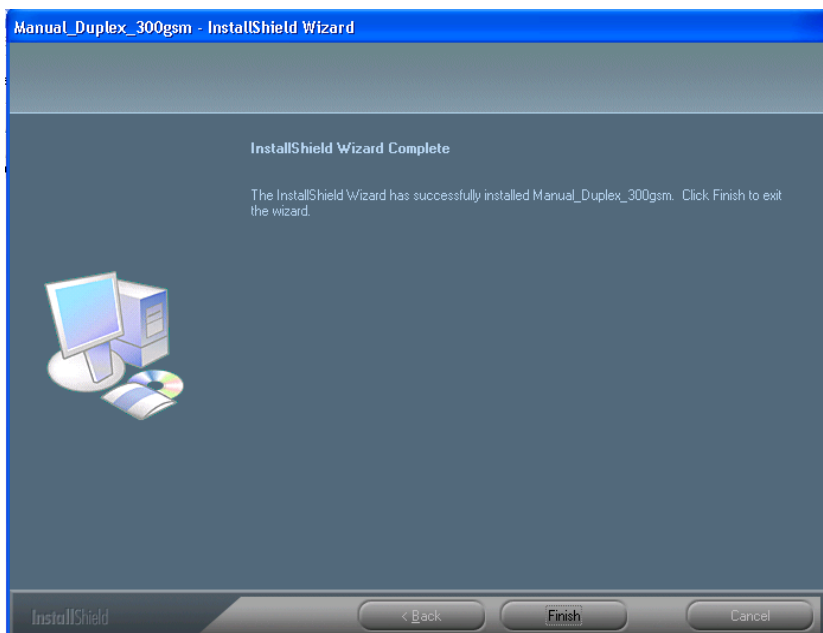
When you select the **Manual duplex** print method for a job with a media weight of 300 gsm, the job fails and appears in the **Storage** area.

## Solution

Install the **Manual\_Duplex\_300gsm\_Patch** on the CX print server version 1.5. After installing this patch, the **Manual duplex** print method on a job with a media weight of 300 gsm will print as expected.

## Installation procedure

1. Exit the CX print server software.
2. Copy the **Manual\_Duplex\_300gsm\_Patch.zip** file to the CX print server, and unzip the file.
3. Double-click the **Manual\_Duplex\_300gsm\_Patch.exe** file.

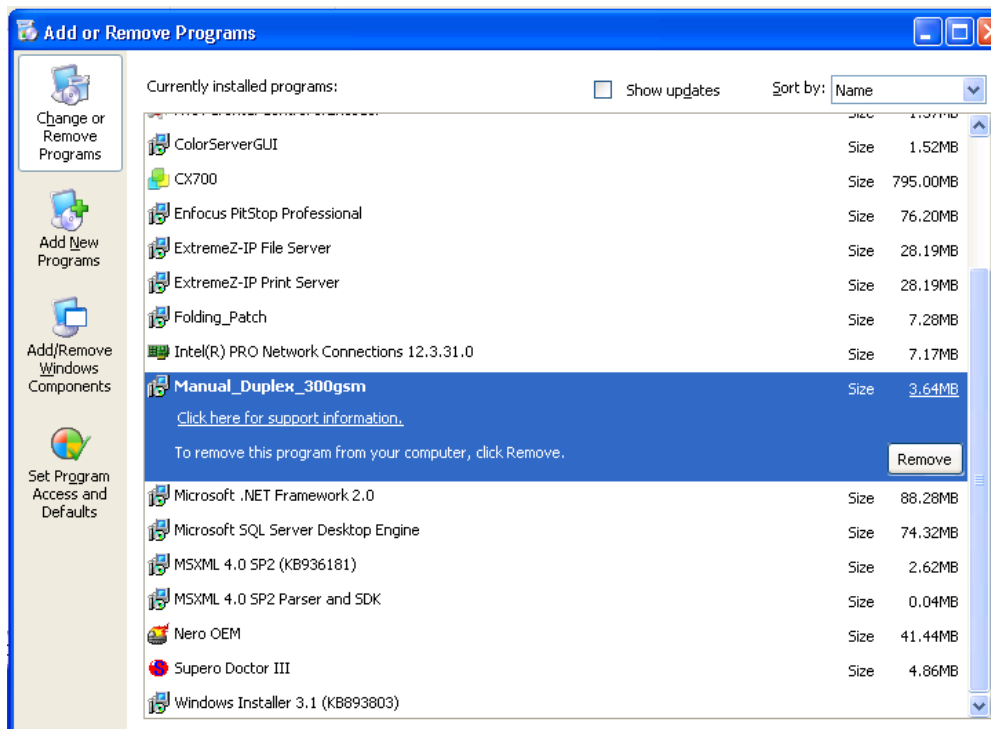


4. In the InstallShield Wizard, click **Finish**.
5. Start the CX print server software.

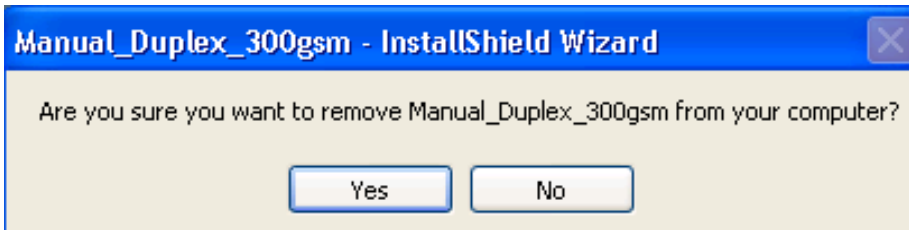
6. Verify that the patch was installed successfully:
  - a. From the **Help** menu, select **About**.
  - b. In the **Updates** box, make sure that **Manual\_Duplex\_300gsm\_Patch 10-Nov-2009** appears.

## Uninstalling the patch

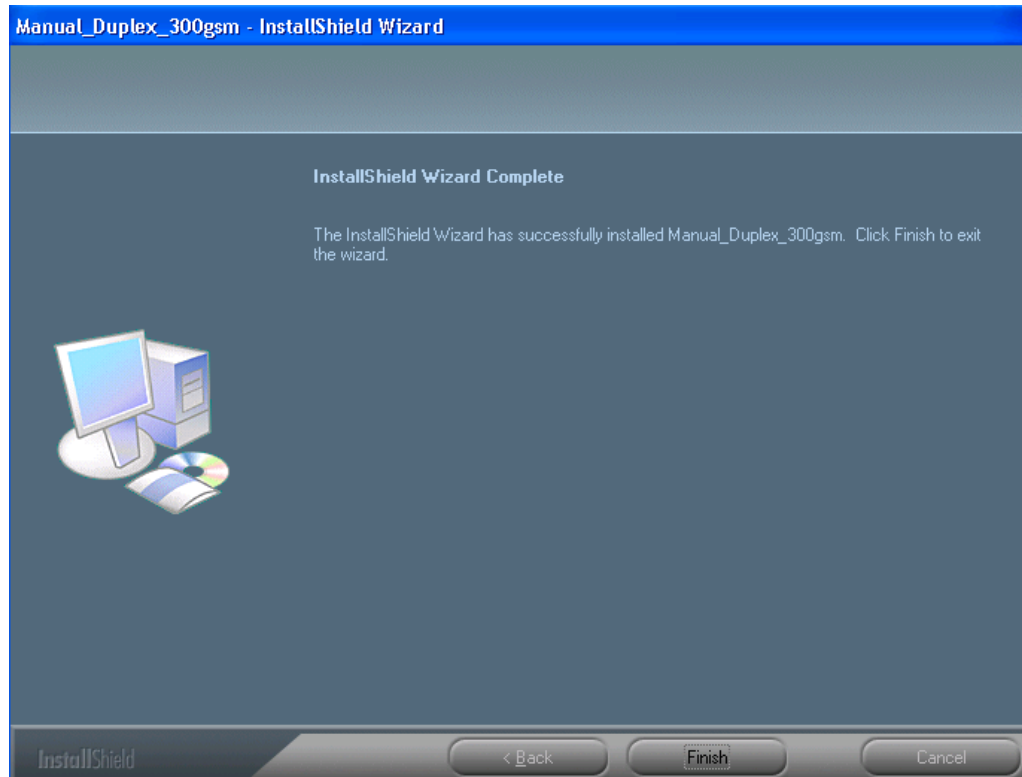
1. Exit the CX print server software.
2. From the **Start** menu, select **Setting > Control Panel > Add or Remove Programs**.



3. From the **Currently installed programs** list, select the **Manual\_Duplex\_300gsm\_Patch** and then click **Remove**.



4. Click **Yes**, to confirm removing the patch.



5. In the InstallShield Wizard, click **Finish**.
6. Start the CX print server software.
7. From the **Help** menu, select **About** and verify that the patch was successfully removed.

## About Print On-Demand Solutions Group

The Print On-Demand Solutions Group develops and supports high-performance CREO Color Servers and key workflow solutions for a range of digital production printers and presses. It also develops advanced on-demand applications to enable the creation of personalized direct mail, targeted catalogs and other powerful one-to-one marketing communications tools.

This independent unit of Kodak's Graphic Communications Group will continue to help its customers leverage their investment in digital printing.

For more information about CREO Color Servers, visit [www.creoservers.com](http://www.creoservers.com)

(c) Kodak, 2009. All rights reserved. Creo is a trademark of Eastman Kodak Company. Adobe, Acrobat, Adobe Illustrator, Distiller, Photoshop, PostScript, and PageMaker are trademarks of Adobe Systems Incorporated. Apple, AppleShare, AppleTalk, iMac, ImageWriter, LaserWriter, Mac OS, Power Macintosh, and TrueType are registered trademarks of Apple Computer, Inc. Macintosh is a trademark of Apple Computer, Inc., registered in the U.S.A. and other countries. PANTONE, Hexachrome, PANTONE Goe, PANTONE Hexachrome, and PANTONE MATCHING SYSTEM are the property of Pantone, Inc. PEARL, PEARLsetter, PEARLhdp, PEARLdry, and PEARLgold are registered trademarks of Presstek, Inc. Technical data subject to change without notice.