

Document number ref: 14162-EN

Date: 5-Mar-04

Document Written By: Ran Lev

Memo

SPAR# 178718725: VI jobs from Atlas® Print Shop Mail Variable Print Specification) with Creo Automatic Picture Replacement (APR) files fail in RIP.

Problem Description

Using the APR feature when printing from Atlas Print Shop Pro generates PostScript errors.

Problem Solution

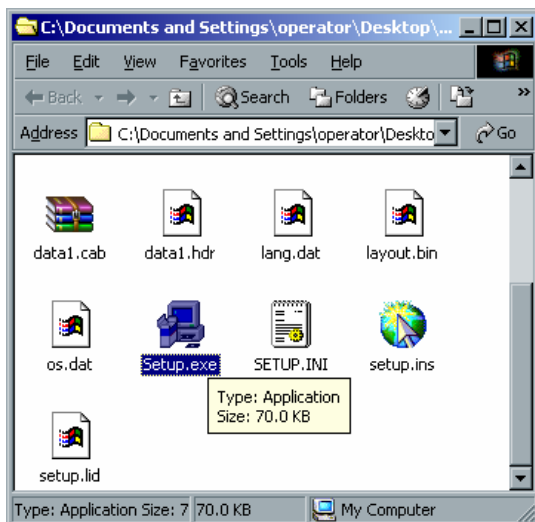
Install patch **PSM_VPS_APR**.

Relevant to Spire Color Server Version

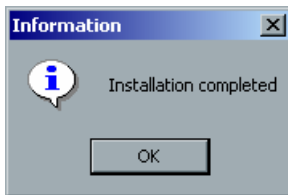
This problem is relevant to the Spire CXP3535 color server version1. The patch can also be installed on all future service packs of this primary version.

Installation Procedure

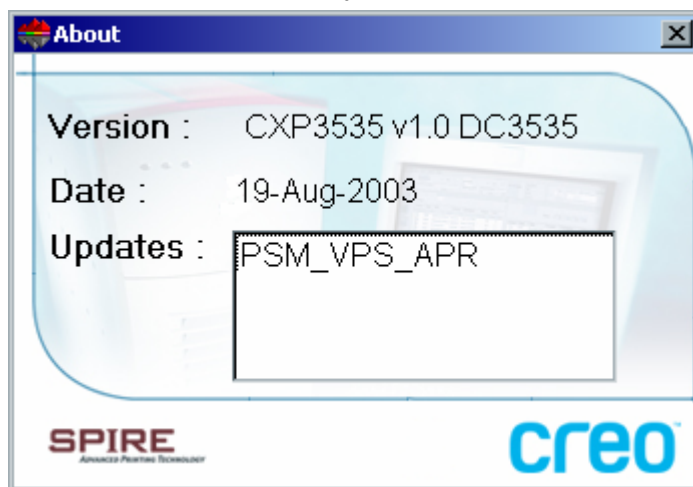
1. Shut down the Xerox DocuColor 3535 printer.
2. Shut down the Spire CXP3535 color server application.
3. Unzip the patch file **PSM_VPS_APR.zip** and save to the desktop.
4. Double-click the **Setup.exe** file.



5. When the **Installation completed** message appears, click **OK**.



6. Start the Spire CXP3535 color server application.
7. Wait until the CXP3535 Color Server application workspace appears.
8. Power up the Xerox DocuColor 3535 printer.
9. Select **Help>About** to verify that the patch installation was successful (as shown below).



Note

To uninstall the patch, perform the complete uninstall/install process for the Spire CXP3535 color server application from CD-ROM #2.