

Document: SPAR

Internal Bug #: 17727

SPAR #: 703259239

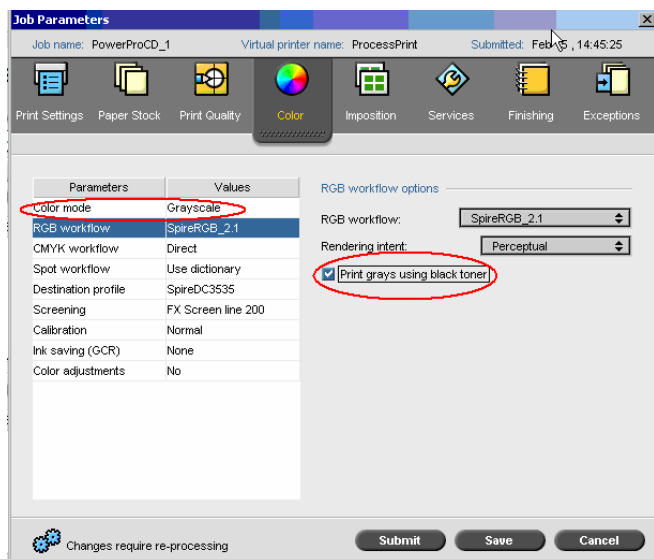
Release date: February 2005

Technical bulletin

IOT Calculates Color Clicks When Both Grayscale and Print Using K Toner Are Enabled

Problem Description

In the Spire™ CXP3535/CXP3535e color server 2.0 software, a conflict occurs on the **Color** tab when **Grayscale** is selected as the Color mode and the **Print grays using black toner** check box is selected in the **RGB workflow options** area. Job accounting is calculated as color clicks on the IOT and not as black and white.



Solution

Load the attached patch.

Installation Procedure

1. Shut down the Xerox® DocuColor 3535 printer-copier.
2. Quit the Spire color sever software.
3. Unzip the **B&WClickCharge.zip** file.
4. Double-click the **B&WClickCharge.exe** file.

5. A message appears asking you to make sure that the Spire color server software is not running. Click **OK**.
6. When the installation confirmation message appears, click **OK**.
7. Start the Spire CXP3535/CXP3535e color server 2.0 software.
8. Turn on the Xerox DocuColor 3535 printer-copier.
9. From the **Spire** menu, select **Help > About** and verify that the patch was successfully installed.



Notes

1. The patch supports only CXP3535/CXP3535e color server 2.0 and 2.0 SP1 software. It does not support earlier Spire CXP3535 color server 1.0 software.
2. The patch will not appear in the About window in the Spire CXP3535/CXP3535e color server 2.0 software.

About Creo

Creo is a world leader in solutions for the graphic arts industry. Core product lines include image capture systems; inkjet proofers; thermal imaging devices for films, plates, and proofs; professional color and copydot scanning systems; workflow management software; and proofing and printing consumables. Creo is also an original equipment manufacture supplier of on-press imaging technology, components for digital presses, and color servers for high-speed, print-on-demand digital printers. Creo trades under the symbols CREO on NASDAQ and CRE on the Toronto Stock Exchange. www.creo.com

© 2004 Creo Inc. The Creo product names mentioned in this document are trademarks or service marks of Creo Inc. and may be registered in certain jurisdictions. Other company and brand, product, and service names are for identification purposes only and may be trademarks or registered trademarks of their respective holders. Data is subject to change without notice.