

## Installing SP2 for Windows XP on the Spire CXP3535e Color Server

Service Pack 2 for Windows XP® contains a large number of known problem updates and several security enhancements. Following a default installation of Service Pack 2 for Windows XP, the internal firewall of Windows XP is enabled in a way that blocks sharing and printing services, and affects some of the features provided by the Spire™ CXP3535e color server.

In order to install Service Pack 2 for Windows XP, Creo has provided the **CreoPatch\_WXPSP2.exe**, which activates the service pack in a way that will not affect the Spire functionality. This document specifies the action to be taken to successfully install Service Pack 2 for Windows XP.

### Installation Steps

#### Notes:

1. Prior to the installation, it is highly recommended to perform a full backup of the system configuration and important jobs, as described in the *Spire CXP3535/3535e Color Server User Guide*.
2. The installation process can take up to an hour.

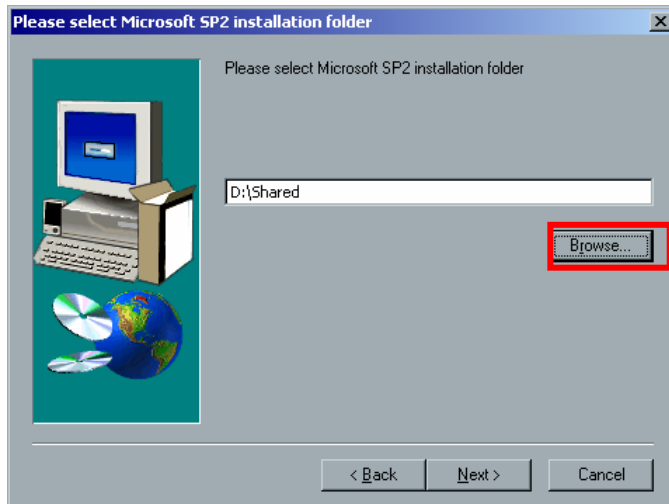
#### To install SP2 for Windows XP:

1. Download Service Pack 2 for Windows XP.
  - a. Shut down the Xerox® DocuColor 3535 Printer-Copier.
  - b. Shut down the Spire CXP3535 color server software.
  - c. Click the following link and save the file to **D:\shared**. Do *not* open the file.  
<http://download.microsoft.com/download/1/6/5/165b076b-aaa9-443d-84f0-73cf11fdcdf8/WindowsXP-KB835935-SP2-ENU.exe>.

**Important:** Make sure that you have saved the Service Pack 2 file in the appropriate location on your Spire color server. Do *not* install it on your Spire color server.

2. Install the patch.
  - a. Double click the **CreoPatch\_WXPSP2.exe** file.

- b. In the following window, click **Browse** and navigate to the **WindowsXP-KB835935-SP2-ENU.exe** file (Windows XP SP2 installation file), which is located in the **D:\Shared** folder.



- c. Click **Next**.

The Service Pack installation runs and after approximately 8 to 10 minutes, the Spire CXP3535e color server automatically restarts.

**Note:** It may take at least one minute from the time the Installation window disappears until the server restarts.

3. Verify that SP2 for Windows XP is installed.  
From the **Help** menu, select **About**. In the About window, make sure that the **Microsoft SP2 for Spire** update appears in the **Updates** box.



Creo is a world leader in solutions for the graphic arts industry. Core product lines include image capture systems; inkjet proofers; thermal imaging devices for films, plates, and proofs; professional color and copydot scanning systems; workflow management software; and proofing and printing consumables. Creo is also an original equipment manufacture supplier of on-press imaging technology, components for digital presses, and color servers for high-speed, print-on-demand digital printers. Creo trades under the symbols CREO on NASDAQ and CRE on the Toronto Stock Exchange. [www.creo.com](http://www.creo.com)

© 2004 Creo Inc. The Creo product names mentioned in this document are trademarks or service marks of Creo Inc. and may be registered in certain jurisdictions. Other company and brand, product, and service names are for identification purposes only and may be trademarks or registered trademarks of their respective holders. Data is subject to change without notice.