

Document number ref: 14502 - EN

Date: 11-May-04

Document Written By: Ran Lev

# Memo

**SPAR# 542920755:** In a few cases, Creo CRDs for Pantone® colors don't match as closely as they should.

## Problem Description

Printed output of some of the Pantone colors does not match the Pantone charts.

## Problem Solution

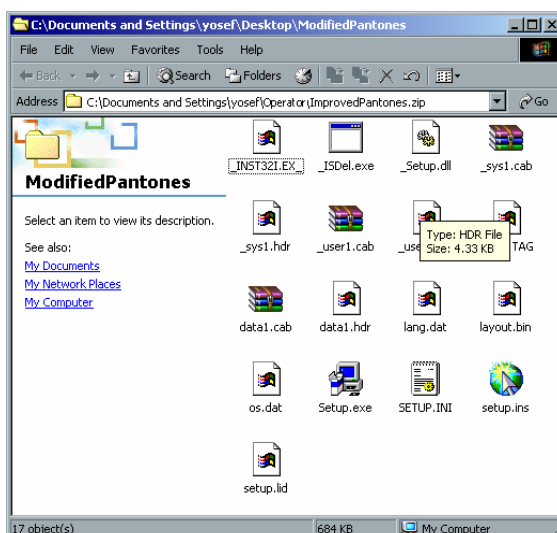
Install the Patch **ImprovedPantones.zip**.

## Relevant to Spire Color Server Version

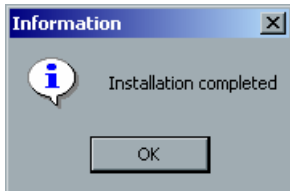
This problem is relevant for the Spire CXP3535 color server 1.0, and all service packs for this version.

## Installation Procedure

1. Shut down the Xerox® DocuColor 3535 Digital Color Press.
2. Shut down the Spire CXP3535 color server application.
3. Unzip the patch file, **ImprovedPantones.zip** to the desktop.
4. Double-click the **Setup.exe** file.



5. Click **OK** when the following message appears.



6. Start the Spire CXP3535 color server application and wait until the workspace appears.
7. Turn on the Xerox DocuColor 3535 Digital Color Press.
8. From the **Help** menu, select **About** and verify that the patch installation was successful (as shown below).



## Notes

1. When the **ImprovedPantones** patch is installed, new pantone conversion values are added to the custom spot dictionary. Any specific spot color values that were in the library prior to the patch installation will override the **ImprovedPantones** patch spot color values.
2. Use the Spot Color Editor to remove a specific spot color value that was installed during the installation of the **ImprovedPantones** patch and revert to previous spot values. For more information about the Spot Color Editor, see the Spire CXP3535 Color Server User Guide, chapter 6 – The Spot Color Editor section.
3. To uninstall the patch, perform the complete uninstall/install process on CD-ROM #2.