

Versalink Firmware Installation Instructions

Overview

The purpose of this document is to define the procedures for downloading device firmware to the Xerox VersaLink Family of products. This document contains procedures for installing firmware via a Windows Firmware Download Utility version 5.3.6.0-20190524-1 and via the device's Embedded Web Server. For those using the windows installer method, firmware versions xx.55.21 and higher require FWDL Utility version 5.3.6.0.

Supported Products:

WC 6515, Phaser 6510, VersaLink: C400, C405, B400, B405, C7000, C7020/C7025/C7030, C500/C600, C505/C605, B600/B610, B605/B615, B7025/B7030/B7035, C8000/9000.

Methods Supported:

- Network (Ethernet) – Windows Firmware Download Utility or Embedded Web Server
 - To obtain the IP Address of the device, print a Configuration Report.
 1. At the printer control panel, press the **Home** button.
 2. Touch Device > About > **Information Pages**.
 3. Touch **Configuration Report**.
 4. To return to the Home screen, press the **Home** button.
- USB (Type-A to Type-B cable) – Windows Firmware Download Utility only
 - The USB Type-B port is on the back of the printer.

Prerequisites to Installing Firmware

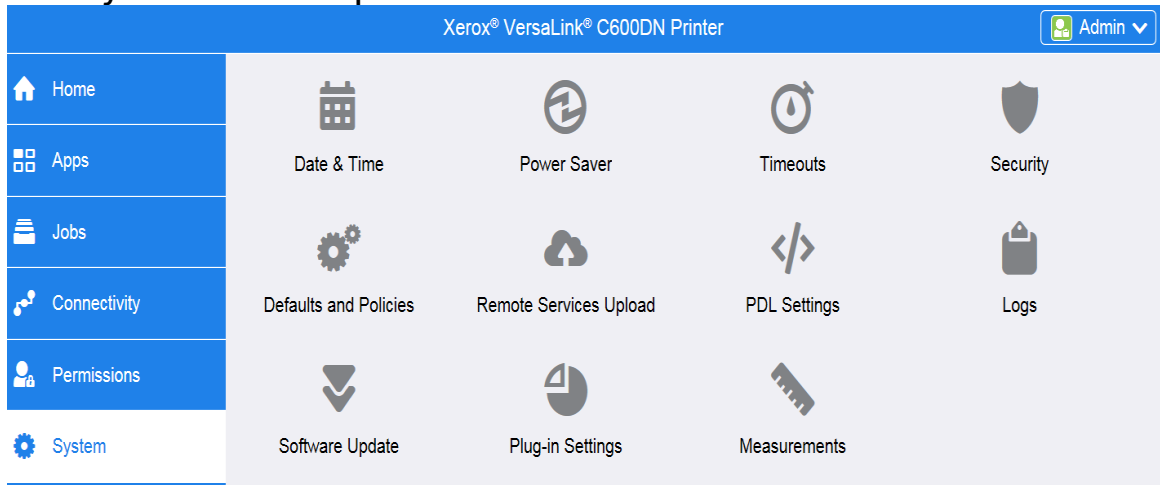
- ✓ Administrative Rights to the workstation are required to run the Windows Firmware Download Utility.
- ✓ Before you download and install new software, determine the current software version installed on your printer.
 - Procedure to determine the firmware version from the Embedded Web Server:*
 - A. In the Embedded Web Server, click **System**.
 - B. Click **Software Update**.
 - C. In the Software Update area, view the Current Version.
 - Procedure to determine the firmware version at the printer control panel:*
 - A. At the printer control panel, press the **Home** button.
 - B. Touch **Device > Software Update**.
 - C. For Current Version, view the version number.
- ✓ Ensure the device is enabled to allow for Software Updates.
 - Procedure for Enabling Software Updates*
 - A. On a computer open a web browser and enter the Device's IP Address. Example: http://<IP Address>
 - B. On the device's web page (Xerox Embedded Web Server) Login as a system administrator.
 - C. Select **Log In**.
 - D. Enter user name and password
 - E. Click **[Log In]**.

Note: The default user name is admin and default password is 1111.

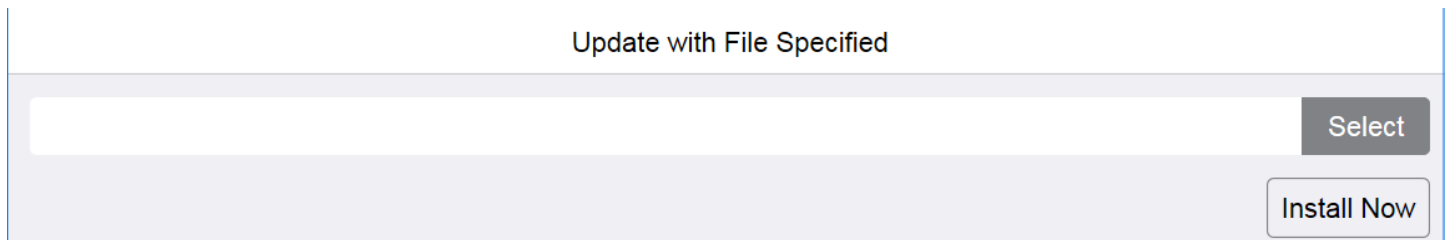
 - F. Once logged in, select Home > System > Software Update > **[Enable]**.
 - G. Select **[Restart Now]** to reboot the device.

Procedure for using Device's Embedded Web Server

1. Download the *.bin firmware file and put it in a directory that can be browsed to.
2. On a computer open a web browser and enter the Device's IP Address. Example: http://<IP Address>
3. On the device's web page (Xerox Embedded Web Server) Login as a system administrator.
4. Select **[Log In]**. Enter the admin user name and password. Click **[Log In]**.
5. Select **System > Software Update**.



6. Browse for the firmware file (*.bin) by clicking **Select**.
7. Navigate to the location where you downloaded the file, then select the .bin file.
8. Select **Install Now**.

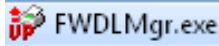


Notes:

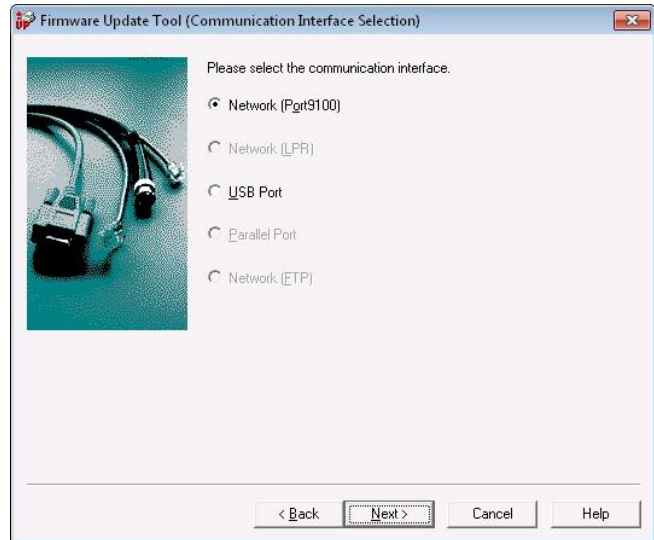
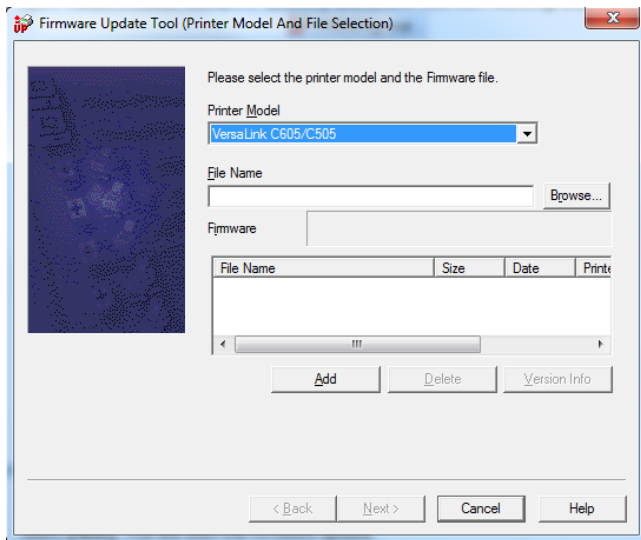
- Software installation begins several minutes after you submit the software to the printer.
- When installation begins, the Embedded Web Server is disabled.
- When the installation completes, the printer restarts and prints a Software Upgrade Report.

Procedure for the Windows Firmware Upgrade Utility

1. Download and extract the **Win_FWTool_5.3.6.0.zip** (Windows Firmware Download Utility).
2. Download the *.bin firmware file and put it in the same location as the Windows Firmware Download Utility.
3. Open “fwdl5.3.6.0-20190524-1” directory and double click the **FWDLMgr.exe** file.



4. Read the End User License Agreement and select **[Agree]**.
5. From the Printer Model dropdown, select your printer (example VersaLink C505).
6. Select **[Browse]**, then navigate to the location of the Firmware “.bin” file.
7. Select the “.bin” file, then select **[Open]**.
8. Select **[Add]** and then select **[Next]**.



To perform an upgrade via the Network

1. Select **[Network (Port9100)]**, then select **[Next]**.
2. Enter the IP address into the IPAddress Input field.
3. Select **[Next]**. This will start the firmware update.
A Firmware update status appears on the Update in Progress screen. The printer control panel also shows the firmware update status. You will see a message similar to “An authorized user is making changes to this device, Please wait....”

Important: Do not close the window or interrupt the printer while it upgrades.

4. Once the upgrade is complete, select **[Finish]** within the tool.
5. When Prompted “Would you like to exit?” select **[Yes]**.

To perform an upgrade using a USB cable

1. Select the **[USB Port]**, then click **[Next]**.
A Firmware update status appears on the Update in Progress screen. The printer control panel also shows the firmware update status. You will see a message similar to “An authorized user is making changes to this device, Please wait....”

Important: Do not close the window or interrupt the printer while it upgrades.

2. Once the upgrade is complete, select **[Finish]** within the tool.
3. When Prompted “Would you like to exit?” select **[Yes]**.

The printer reboots when the upgrade is completed, and a Software Upgrade Report prints.