

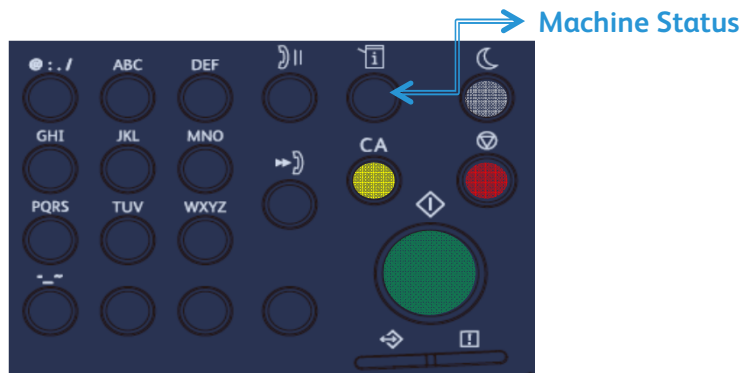
WorkCentre® 5022/5024

Firmware Installation Instructions



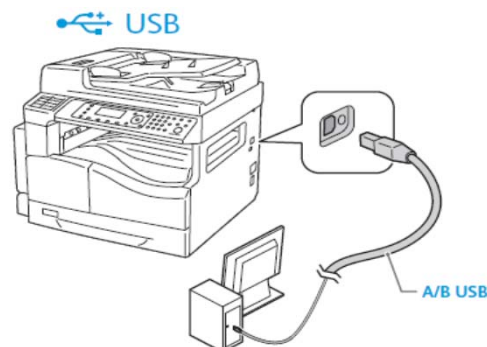
Print System Settings Report

1. Load A4/Letter paper into Tray 1
2. Press **Machine Status** button
3. Select **Print Report** then **OK** button
4. Select **System Settings** then **OK** button
5. Note the Controller Firmware version on the printed System Settings report

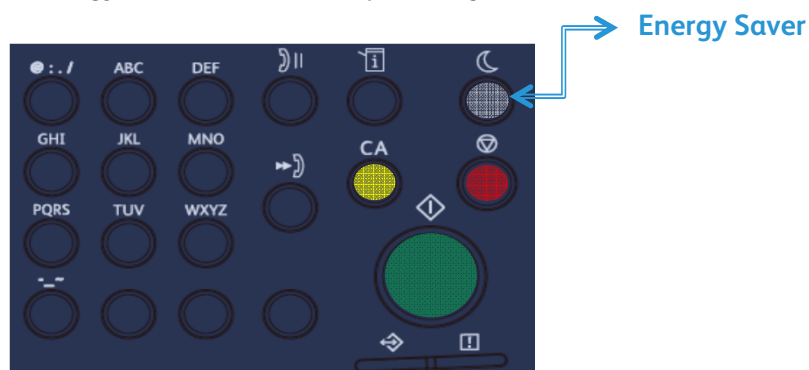


Non-Network WorkCentre 5022/5024 Firmware Update

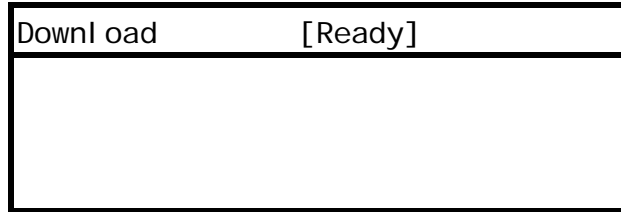
1. Select Drivers & Downloads from link below:
<http://www.support.xerox.com/support/workcentre-5022-5024>
- 1a. Select and write **Xerox WorkCentre 5022/5024 USB-All-In-One Firmware** version number from Xerox.com here: _____
2. Save ZIP file within **Xerox WorkCentre 5022/5024 USB-All-In-One Firmware**
3. Extract files within ZIP onto client PC
4. Turn power off to machine and connect USB cable



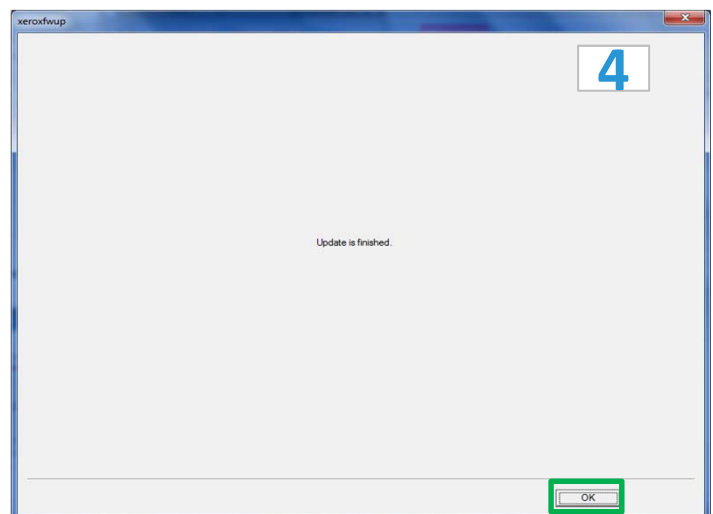
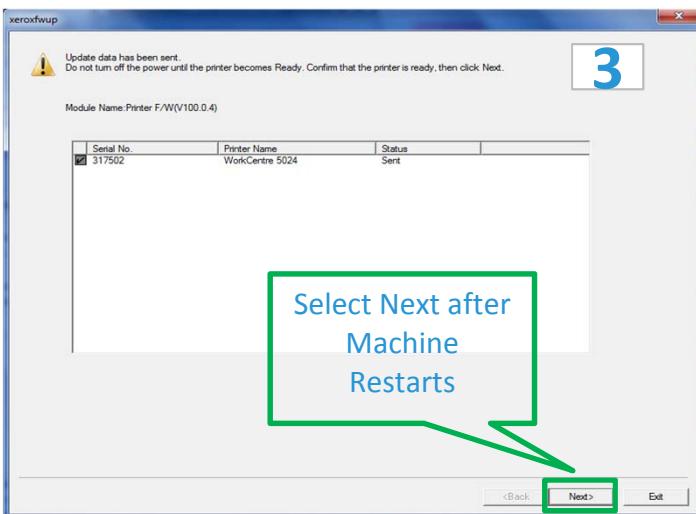
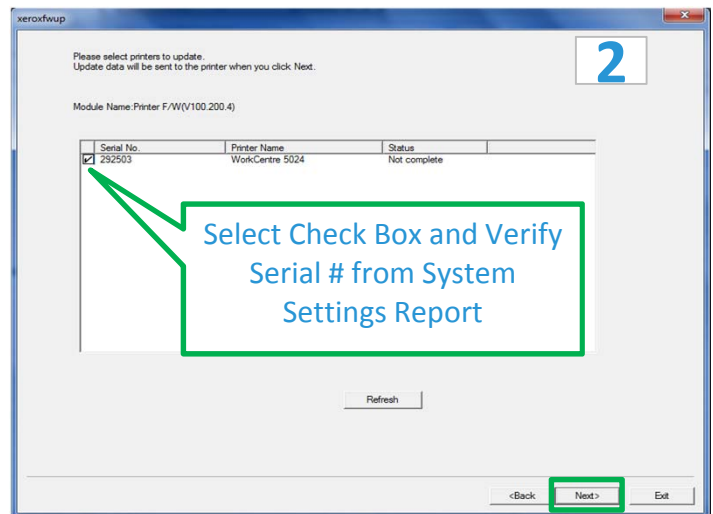
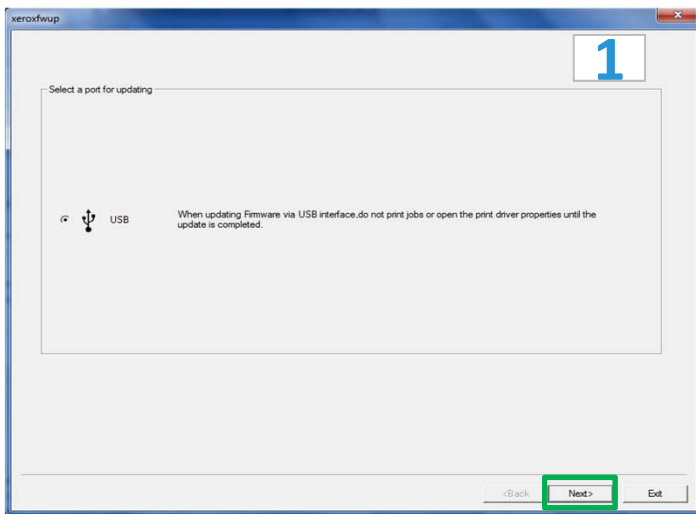
5. Press and hold **Energy Saver** button while powering on machine



6. Once in Download Mode, double-click **Xeroxfwup.exe** extracted from ZIP file on client PC



7. Screens below will appear on client PC



8. **Print System Settings Report** (Steps 2-4, top of Page 1)

9. Confirm Controller Firmware is the same as the version written in 1a. above

10. For Non-Network configuration, update is complete and you may remove USB cable

Network WorkCentre 5022/5024 Firmware Update

1. Select Drivers & Downloads from link below:

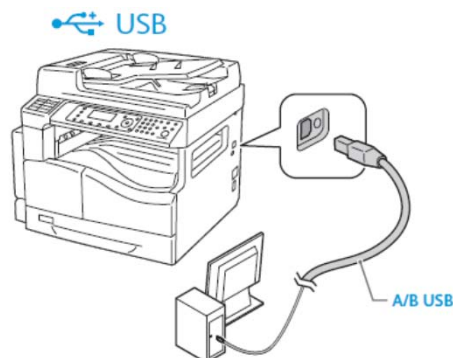
<http://www.support.xerox.com/support/workcentre-5022-5024>

1a. Select and write **Xerox WorkCentre 5022/5024 Network Firmware** version number from Xerox.com here: _____

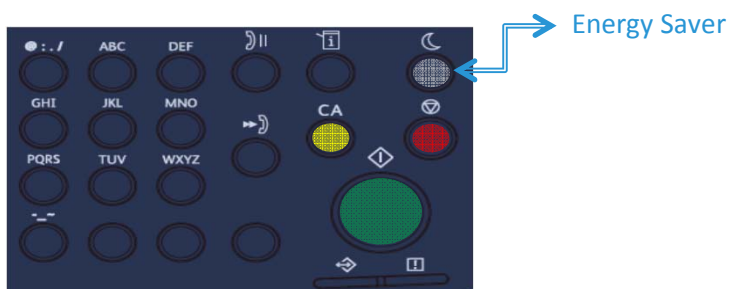
2. Save ZIP file within **Xerox WorkCentre 5022/5024 Network Firmware**

3. Extract files within ZIP onto client PC

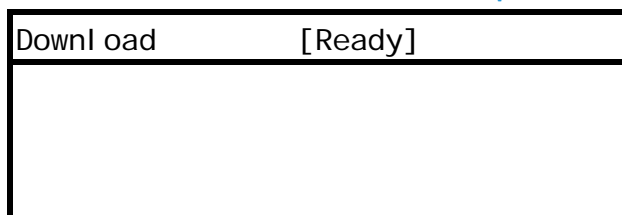
4. Turn power off to machine and connect USB cable



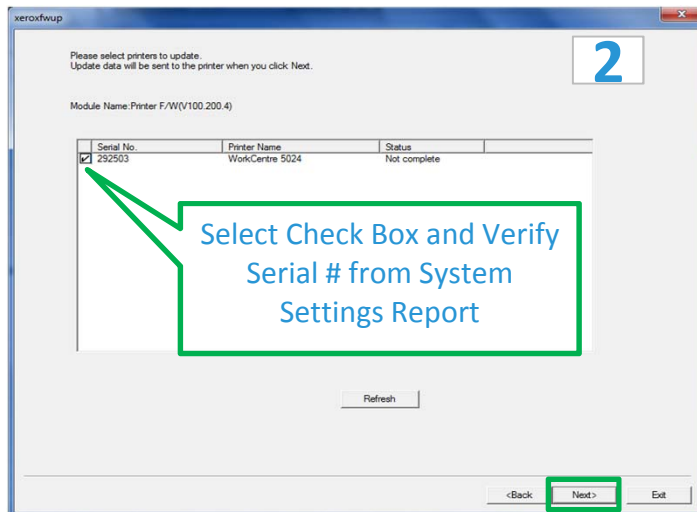
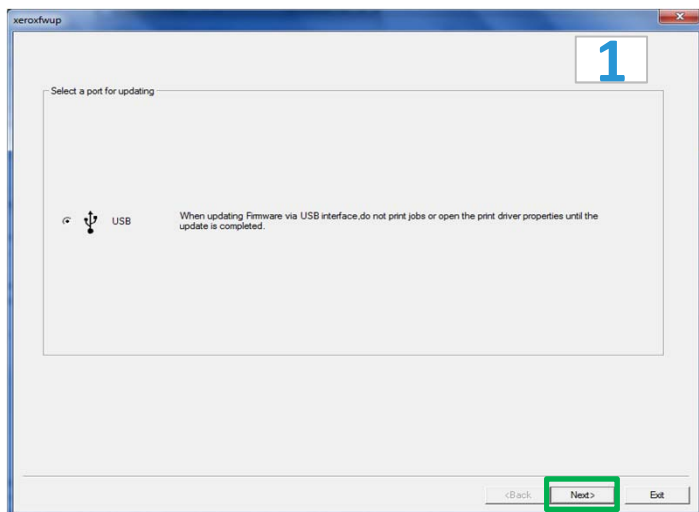
5. Press and hold **Energy Saver** button while powering on machine



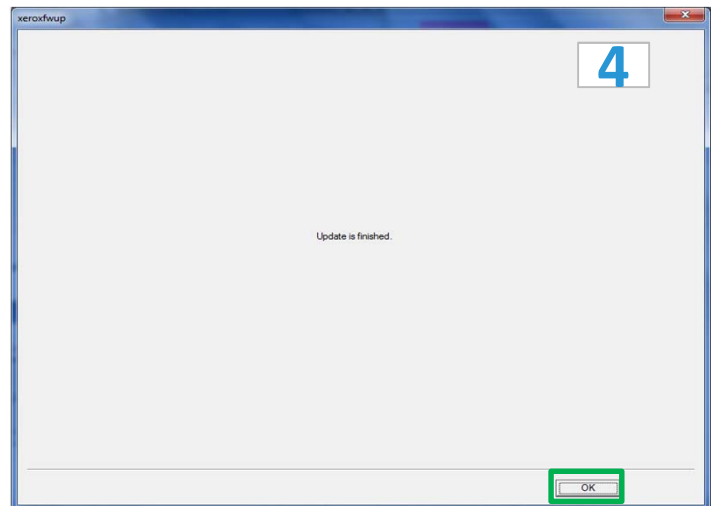
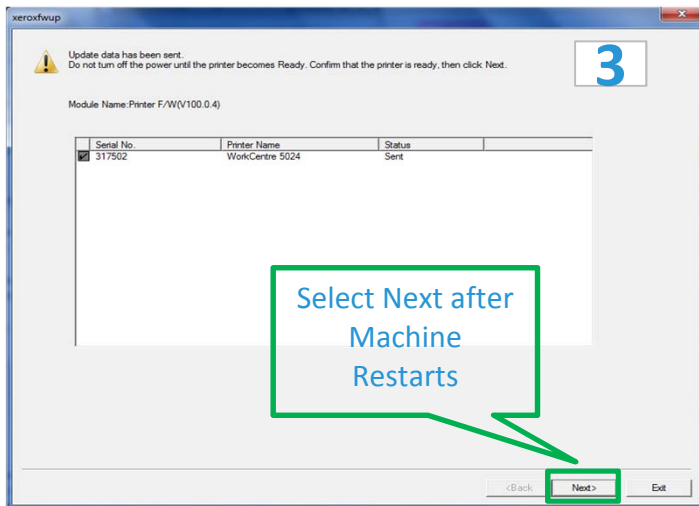
6. Once in Download Mode, double-click **Xeroxfwup.exe** extracted from ZIP file on client PC



7a. Screens below will appear on client PC



7b. Screens below will appear on client PC

8. **Print System Settings Report** (Steps 2-4, top of Page 1)

9. Confirm Controller Firmware is the same as the version written in 1a. above

10. For Network configuration, update is complete and you may remove USB cable