



PANTONE PLUS SERIES/PANTONE Goe™ System

PANTONE® Calibrated Color Support

Digital Library
User Guide

PANTONE® Calibrated Color Support

Digital Library User Guide

Pantone LLC
590 Commerce Boulevard
Carlstadt, New Jersey 07072-3098 U.S.A
Phone 201.935.5500 • Fax 201.896.0242

PANTONE Colors displayed herein may not match PANTONE-identified standards. Consult current PANTONE Color Publications for accurate color.

PANTONE® and other Pantone trademarks are the property of Pantone LLC. Adobe, Acrobat, Illustrator, InDesign, Photoshop and PostScript are either registered trademarks or trademarks of Adobe Systems Incorporated in the United States and/or other countries. Macintosh, Mac and Mac OS are trademarks of Apple Computer, Inc. Corel, and CorelDRAW are trademarks or registered trademarks of Corel Corporation and/or its subsidiaries in Canada, the United States and/or other countries. Quark and QuarkXPress are trademarks or registered trademarks of Quark, Inc. and its affiliates in the U.S. and/or other countries. Microsoft and Windows are either registered trademarks or trademarks of Microsoft Corporation in the United States and/or other countries. All other names are trademarks or registered trademarks of their respective owners. Any omission of such trademarks from any product is regretted and is not intended as an infringement on such trademarks.

Pantone LLC is a wholly owned subsidiary of X-Rite, Incorporated. © Pantone LLC, 2013. All rights reserved.

Contents

Importing Color Palettes into Desktop Publishing Applications.....	4
Supported Applications.....	4
System Requirements	5
Application Versions and File Types.....	5
EPS, TIFF and Acrobat Charts	5
Adobe® Photoshop® CS2, CS3, CS4, CS5 & CS6:	6
Adobe® Illustrator® CS2, CS3, CS4, CS5 & CS6:	9
Adobe® InDesign® CS2, CS3, CS4, CS5 & CS6:	11
Adobe® Acrobat® Pro/Reader 6, 8, 9	13
CorelDRAW X3,X4, and X5:.....	15
QuarkXPress Version 6, 7 & 8:.....	16
Technical Support.....	18
How to Contact Us.....	18

Importing Color Palettes into Desktop Publishing Applications

Custom CMYK data has been developed for 1,677 colors from the PANTONE® solid coated color library of the PANTONE PLUS SERIES and/or 2,058 colors of the PANTONE Goe™ System for the optimal reproduction on a specific output device. This custom data is a unique set of color data developed by Pantone color scientists that most closely represents the colors in the PANTONE PLUS SERIES and or the PANTONE Goe System on a specific printer model. When a printer is PANTONE-calibrated, the printer manufacturer has engaged Pantone to develop this optimized color data so that the customer can get the best possible representation for the PANTONE PLUS SERIES Solid Color or the PANTONE Goe System Color standards on coated stock. We take into consideration the specific driver/RIP, device settings, ink set, color engine and paper stock when we are developing this color data since these factors can affect color output. Other factors taken into consideration are screening and substrate, which can also affect the output of color.

This document is intended as a guide to help you use the PANTONE-calibrated palettes in your favorite desktop publishing and graphic design applications. To make it easy for you to use these visually calibrated colors, we have made a number of application-specific, ready-to-use palette files for a number of Macintosh and Windows® applications. The files provided have been organized and formatted for Macintosh and Windows operating systems. Each of these folders contains a collection of platform and application-specific visually calibrated palettes. There are folders by product name or software publisher to help you locate the particular file you are seeking.

Supported Applications

We have provided ready-to-use PANTONE-calibrated palettes for a variety of design and publishing applications. In case you do not see your favorite application supported, we have provided a PANTONE-calibrated color chart in EPS, TIFF and PDF file formats. Most applications, if they are cross-platform, handle loading color palettes in identical ways. The instructions provided for the use of each file type, where appropriate, are cross-platform. If there are differences in handling color palettes, it will be noted accordingly.

It is important to make sure the custom color values for the supported printer are not modified by color management. This can involve turning off color management for some applications. It is especially important to specify this in the print preview dialogs.

Please note: It is best to refer to the user manual of the application being used for the most accurate and current information on color palette handling and color management.

System Requirements

Windows: Microsoft® Windows XP, Windows Vista and Windows 7 (32 and 64-bit)

Macintosh: Mac OS X versions 10.5 and 10.6

Application Versions and File Types

Application	Software Version	File Extension
Adobe® Illustrator®	CS2, CS3, CS4, CS5, CS6	.ai or .acb*
Adobe® Photoshop®	CS2, CS3, CS4, CS5, CS6	.aco & .acb
Adobe® InDesign®	CS2, CS3, CS4, CS5, CS6	.ai or .acb
CorelDRAW® Graphics Suite**	X3, X4, X5	.pal, .cpl & .pl4
QuarkXPress®	6, 7, 8	.qxd, .qcl/.cui***
EPS Charts		.eps
TIFF Charts		.tiff
Text Format		.txt
Adobe® Acrobat® Pro / Reader	6, 8, 9	.pdf

* For technical reasons, only one custom printer color palette of file type .acb should be used in each supported Adobe application.

** CorelDRAW will not be supported for Mac OS.

*** For use in QuarkXPress 7 & 8.

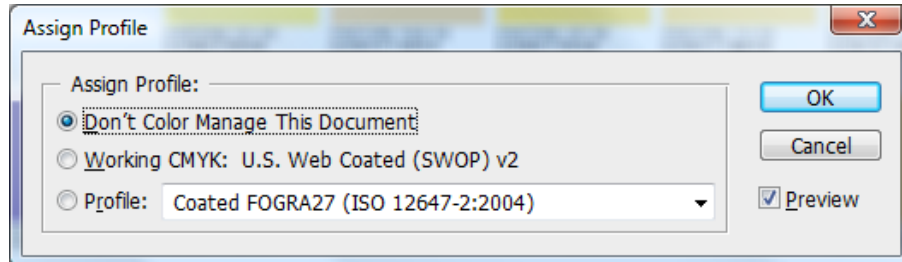
EPS, TIFF and Acrobat Charts

Some presentation or drawing programs may not be listed here as supported applications. If this is the case, you can bring your custom colors into these applications by using any of the appropriate color chart formats. For this to work, the application must have a tool (like an eyedropper) that you can use to pick up colors from an imported graphic. EPS and TIFF charts are also very useful in many applications because they are easy to import and apply. Additionally, the PANTONE Color Names are provided in the EPS and TIFF palettes, whereas some applications do not support naming colors in their native file or palette format.

How to import and access a color palette:

Adobe® Photoshop® CS2, CS3, CS4, CS5 & CS6:

1. Color management can be disabled in a new document by selecting “Don’t Color Manage this Document...” under the Advanced section of the New document dialog. In an existing document select Edit, Assign Profile, “Don’t Color Manage This Document”.

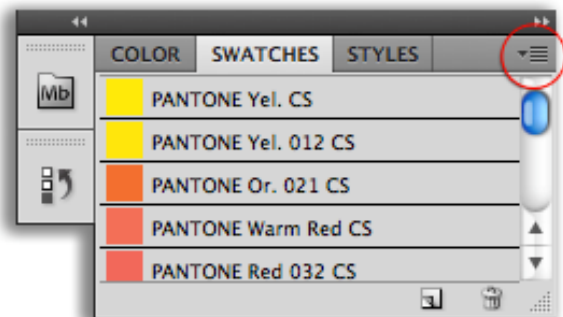


2. The colors can be selected by opening the file in Adobe Photoshop from any accessible file system. Optionally, it can be copied into an Adobe Photoshop program folder so it is displayed in the swatch list.
3. To display the custom colors in the swatch list, copy the swatch file to the color swatches folder in Adobe Photoshop. The default directories are:

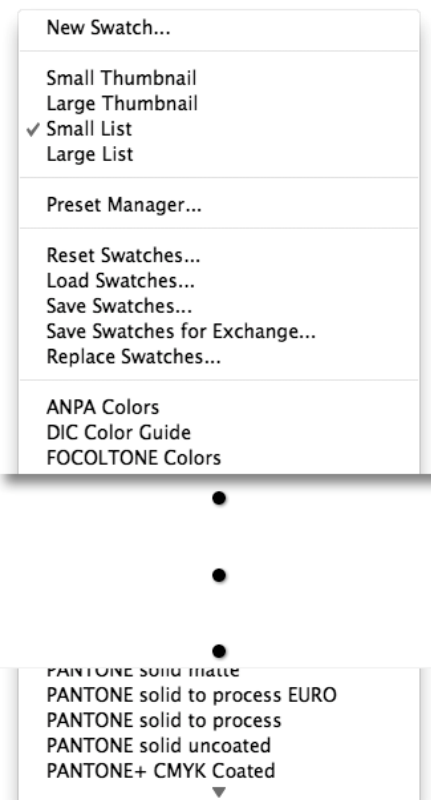
Mac: /Applications/Adobe Photoshop CS{version #}/Presets/Color Swatches

Windows: C:\Program Files\Adobe\Adobe Photoshop CS{version #}\Presets\Color Swatches

4. In the Window menu enable “Swatches”.
5. Open the swatch pull down (pictured right in the red circle).



6. Select the swatch library from the list or select “Load Swatches...” and choose the swatch file.

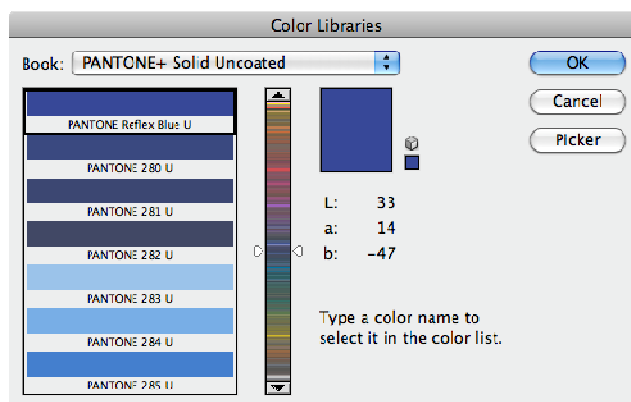


7. The color book can be added to Adobe Photoshop which will enable color selection in “Color Libraries” and “Spot Channel”.
8. Copy the .acb file from Application Support Files\Adobe\Indesign into:

Mac: /Applications/Adobe Photoshop CS{version #}/Presets/Color Books

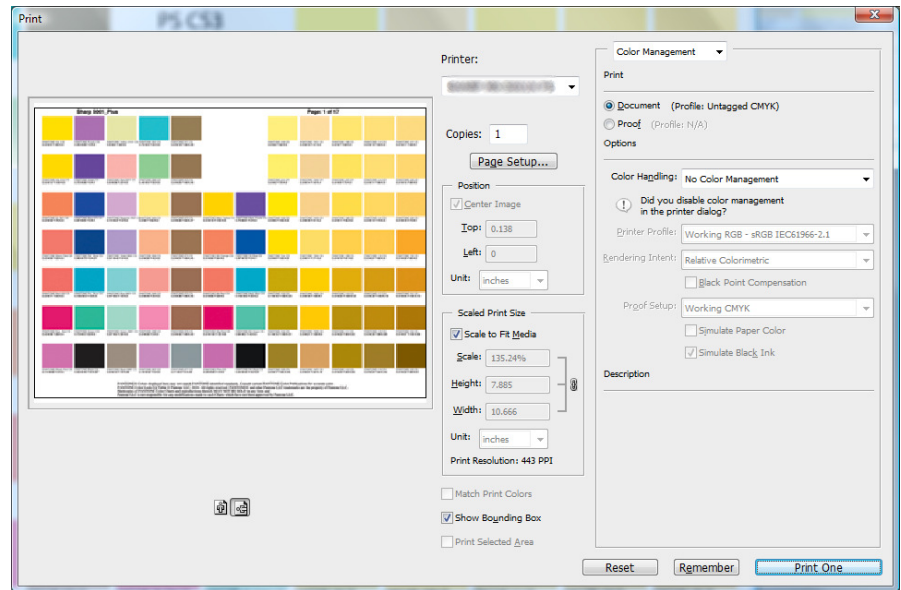
Windows: C:\Program Files\Adobe\Adobe Photoshop CS{version #}\Presets\Color Books

9. In the “Color Picker” select “Color Libraries”. The look up table is now available in the Book drop-down.



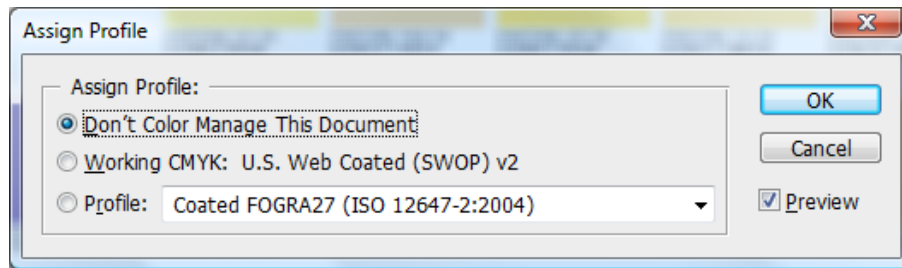
10. In Window menu enable Channels. In the Channel window click on the pull down and select “New Spot Channel...”. The color can be selected by clicking on the color box.

11. When printing select “No Color Management”. If this is not available select “Printer Manages Colors”.



Adobe® Illustrator® CS2, CS3, CS4, CS5 & CS6:

1. Color management can be disabled in an existing document by selecting Edit, Assign Profile, “Don’t Color Manage This Document”.



2. The colors can be selected by opening the file in Adobe Illustrator from any accessible file system. Optionally, it can be copied into an Illustrator program folder so it is displayed in the swatch list.

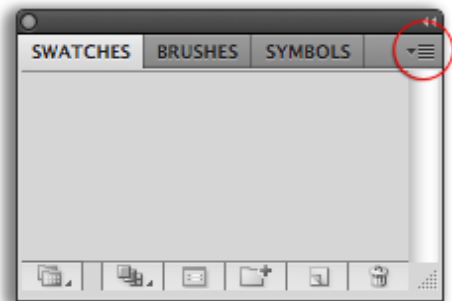
3. To display the custom colors in the swatch list, copy the swatch file to the color swatches folder in Adobe Illustrator. The default directories are:

Mac: /Applications/Adobe Illustrator CS{version #}/en_US/Swatches

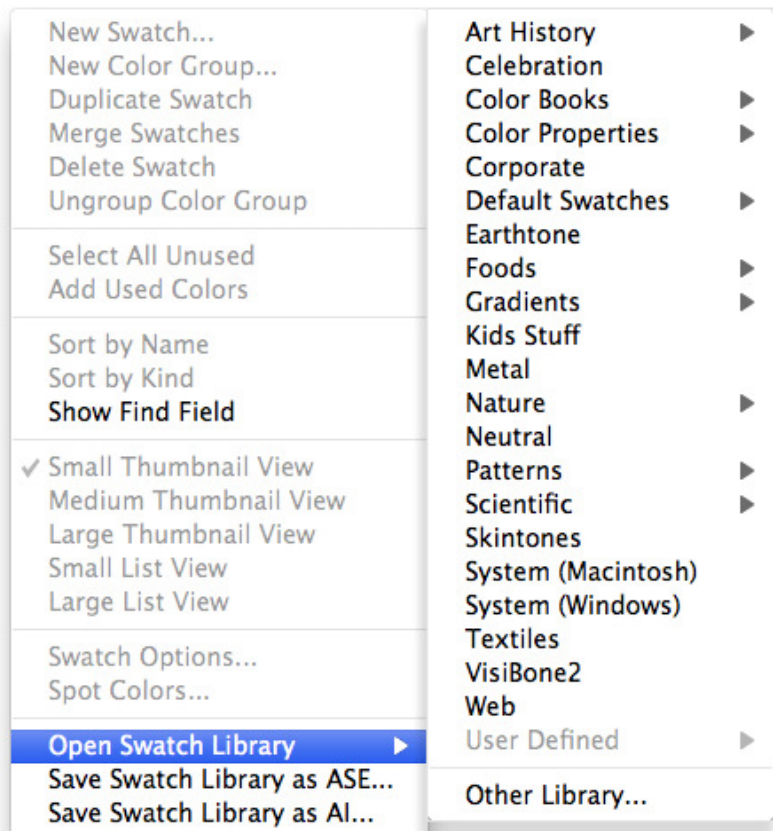
Windows: C:\Program Files\Adobe\Adobe Illustrator CS{version #}\en_US\Swatches

Replace en_US with the relevant language/country code for your localized version of Adobe Illustrator.

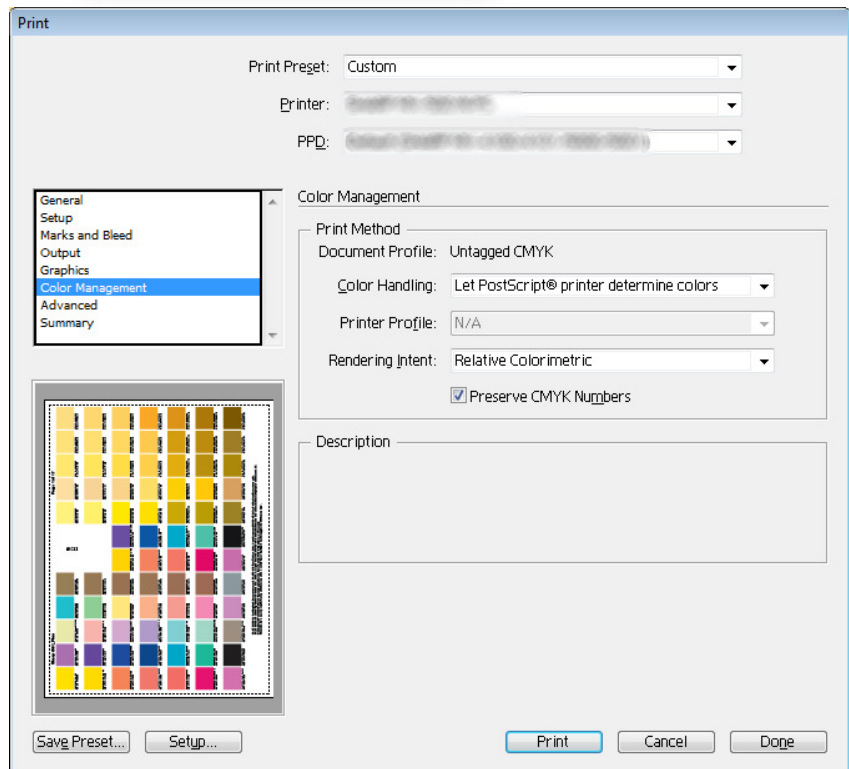
4. In the Window menu enable “Swatches”.
5. Open the swatch pull down (pictured right in the red circle).



6. Select the swatch library from the list or select “Other Library...” and choose the swatch file.



7. When printing select “Let PostScript® printer determine colors”. Enable “Preserve CMYK Numbers”.



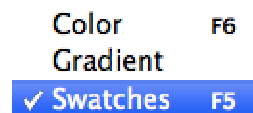
Adobe® InDesign® CS2, CS3, CS4, CS5 & CS6:

1. The colors can be selected by opening the file in Adobe InDesign from any accessible file system. Optionally, it can be copied into an Adobe InDesign program folder so it is displayed in the swatch list.
2. To display the custom colors in the swatch list, copy the swatch file to the color swatches folder in Adobe InDesign. The default directories are:

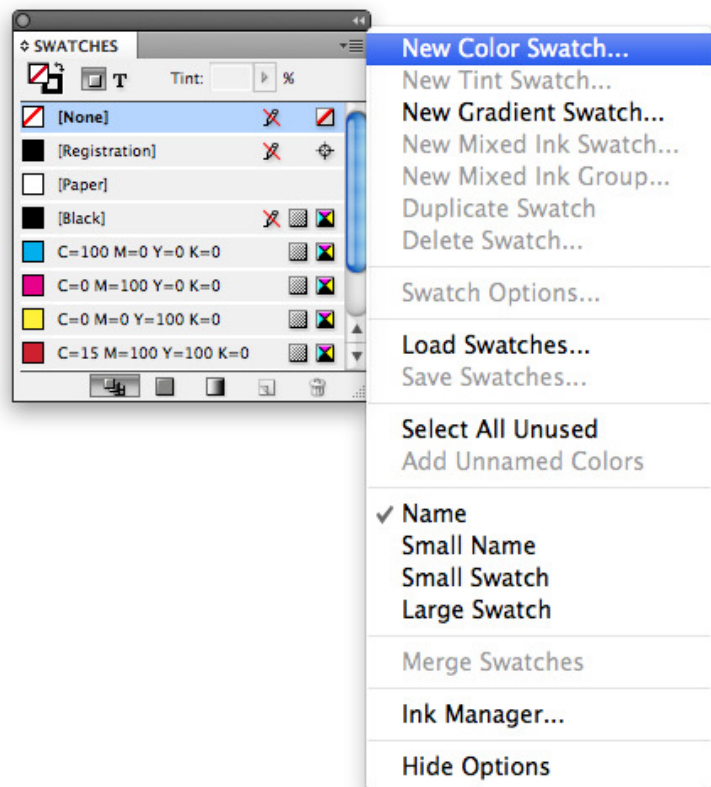
Mac: /Applications/Adobe InDesign CS{version #}/Presets/Swatch Libraries

Windows: C:\Program Files\Adobe\Adobe InDesign CS{version #}\ Presets\Swatch Libraries

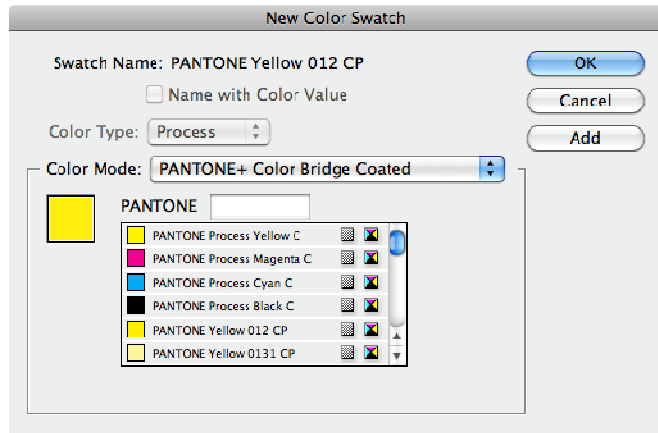
3. In the Window menu select color and enable “Swatches”.



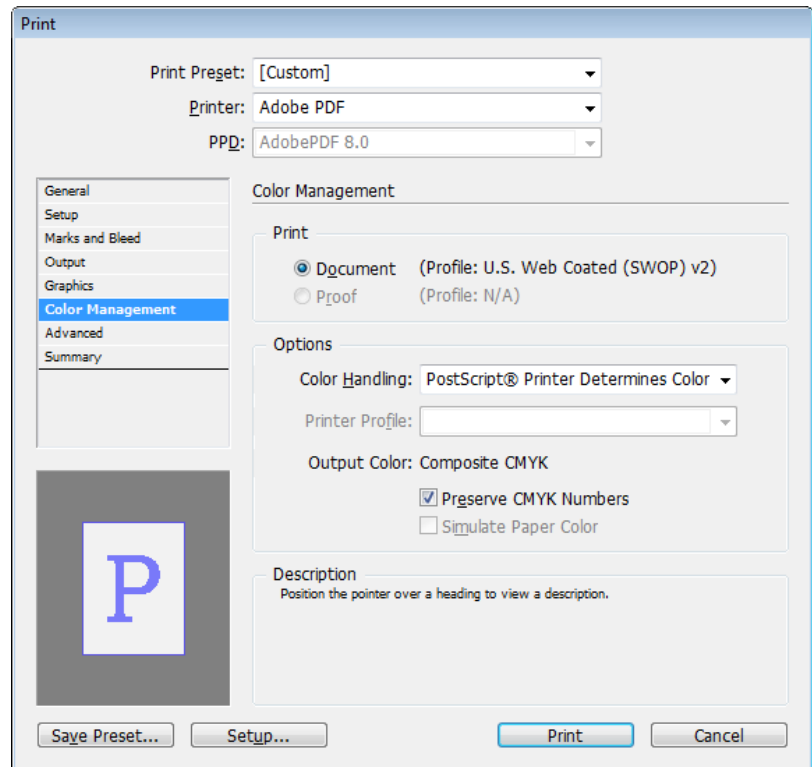
4. In the Swatches window open the pull-down and select “New Color Swatch...”



5. In the “New Color Swatch” window, select the custom LUT from the bottom of the Color Mode list or select “Other Library...”. A list of color appears. Pick the color or type in the name.

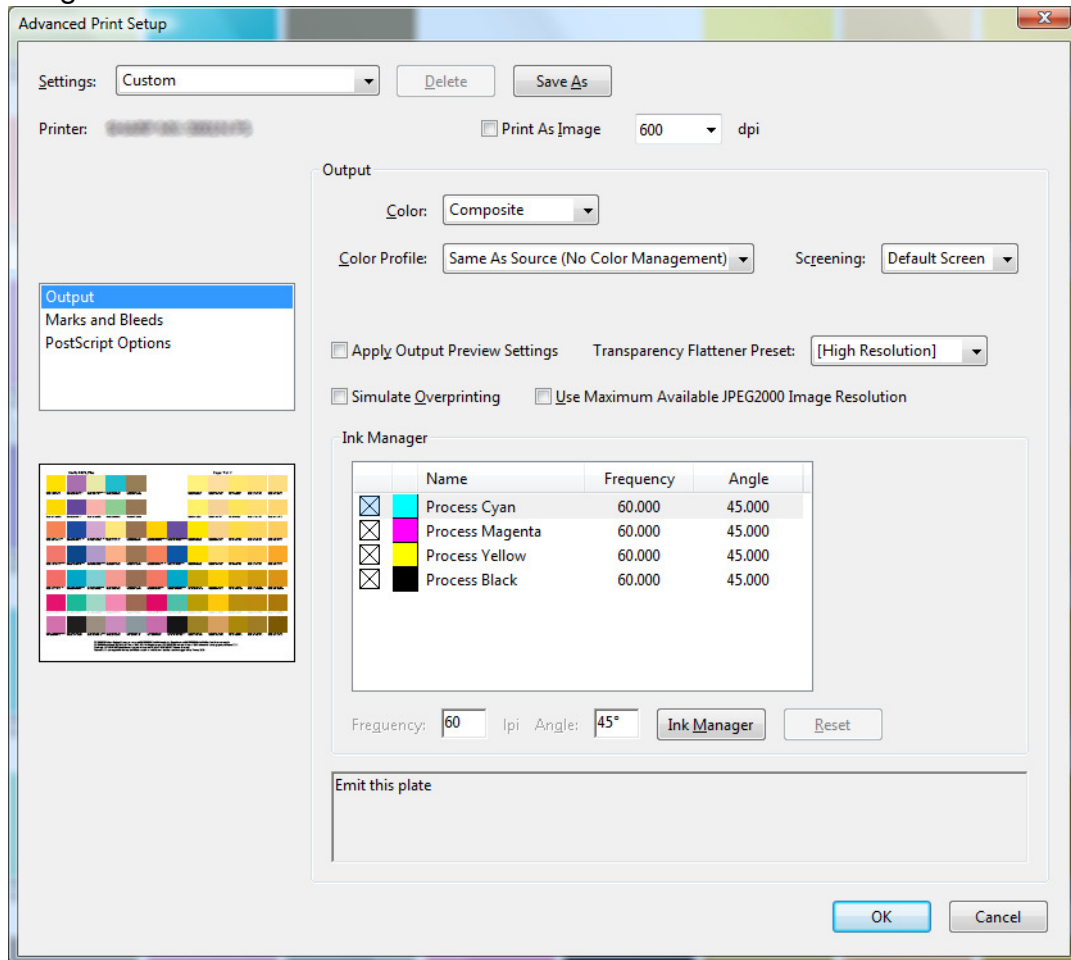


6. When printing select “Let PostScript® printer determine colors”. Enable “Preserve CMYK Numbers”.

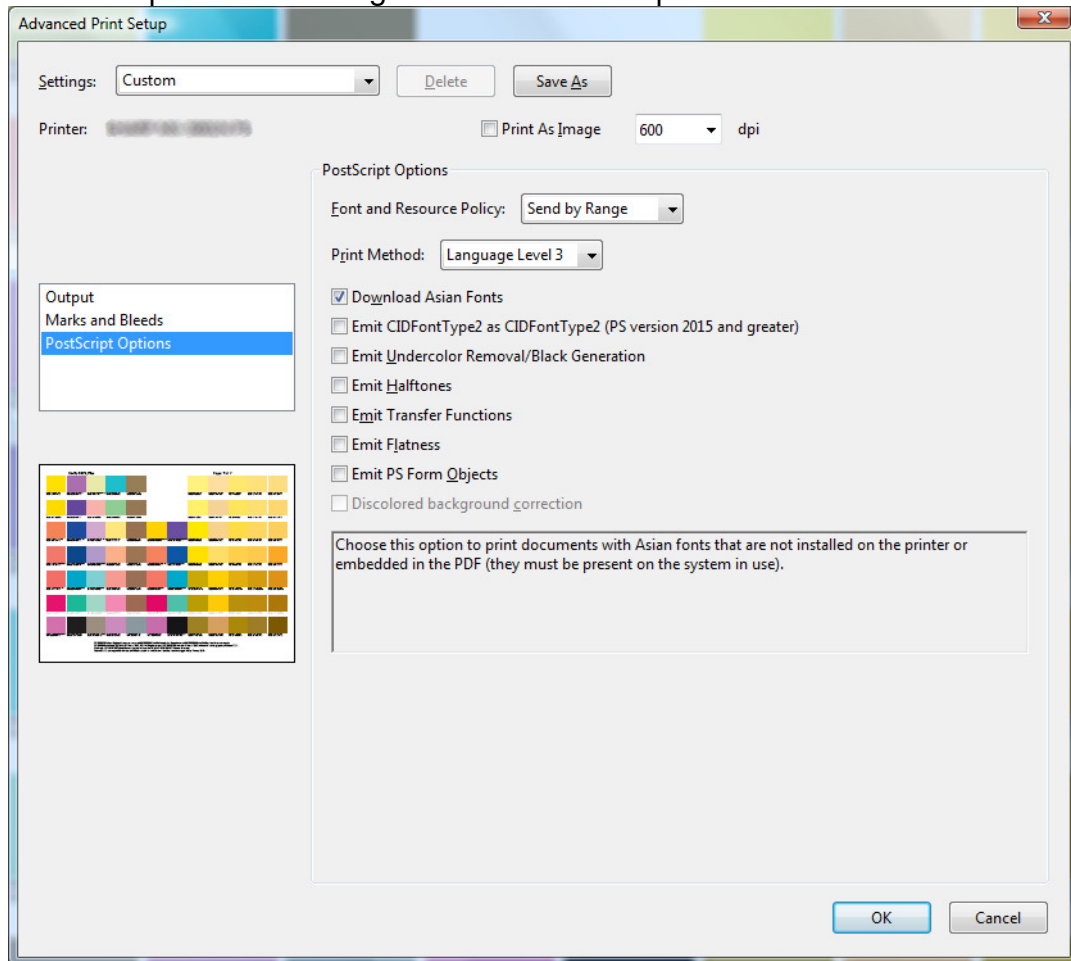


Adobe® Acrobat® Pro/Reader 6, 8, 9

1. In Adobe Acrobat spot colors should be tagged for no color management.
2. When printing, click on Advanced in the print dialog to bring up color management options.
3. In “Advanced Print Setup”, “Output”, set “Color Profile” to “Same As Source (No Color Management)”. Deselect all the options “Apply Output Preview Settings” and “Simulate Overprinting”.



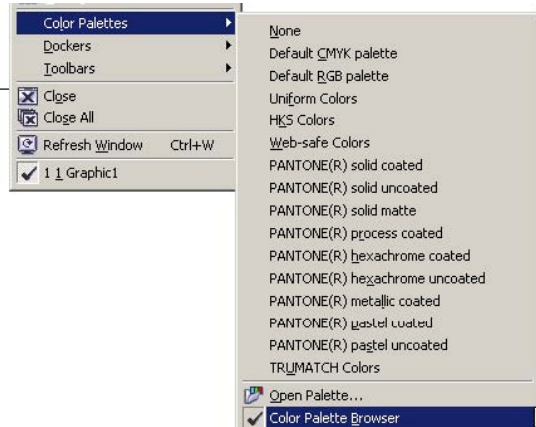
4. In “Advanced Print Setup”, “PostScript Options”, set “Print Method” to “Language Level 3”. Deselect all the options which begin with “Emit”. See picture below.



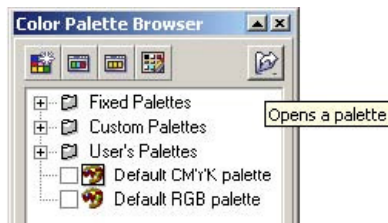
5. Depending on the version of Adobe Acrobat used, not all the options presented above are present or they may be in slightly different places in the advanced print setup dialog. In Adobe Acrobat Reader the option “Printer Determines Colors” should be used. In general we recommend using Adobe Acrobat Pro instead of Adobe Acrobat Reader.

CorelDRAW X3,X4, and X5:

1. Go to Windows menu.
2. Select “Color Palettes,” and click on “Color Palette Browser”.



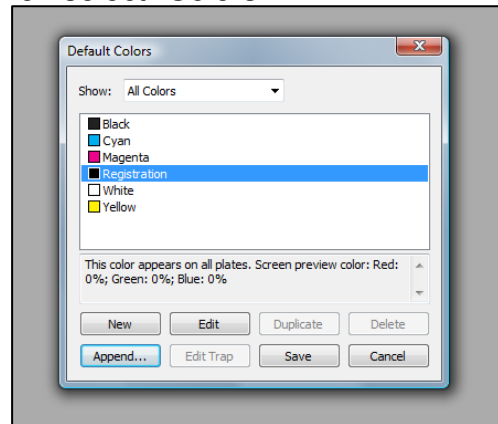
3. Click on the folder/arrow button on the top right-hand side of the browser.



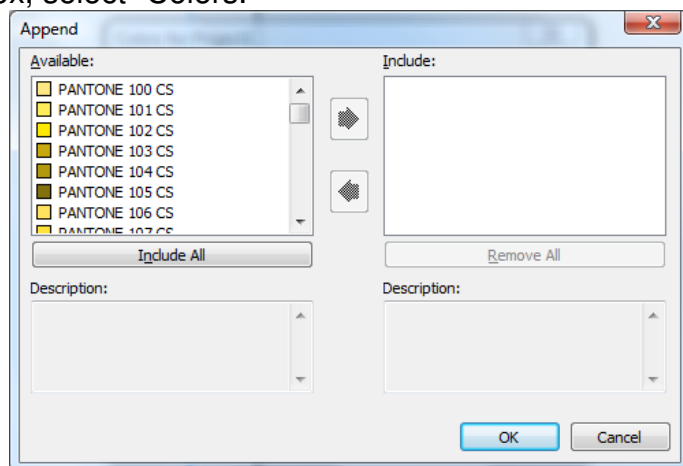
4. Navigate to location the palette files are stored in.
5. Select any color from the color palette.

QuarkXPress Version 6, 7 & 8:

1. Open a New or Existing File in which you need to assign a PANTONE color.
2. From the menu bar, select “Edit” and then select “Colors”.
3. Click on the “Append” button.

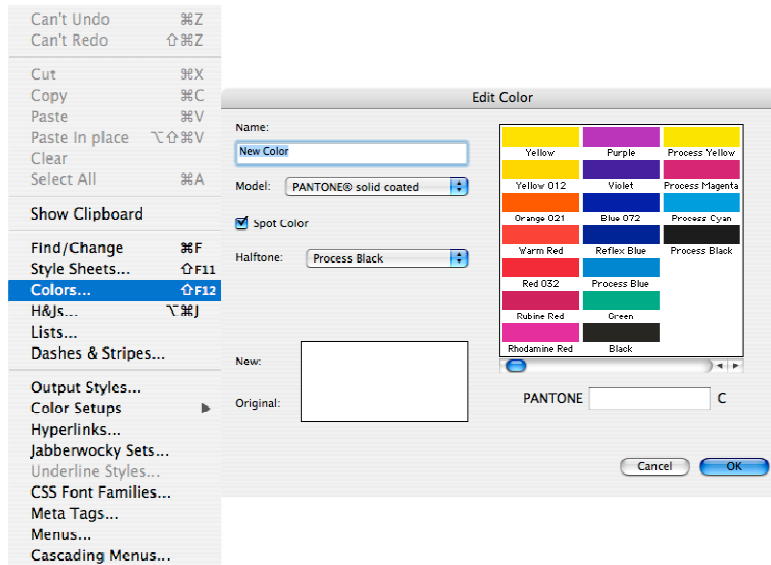


4. Navigate to the location where the files are stored.
5. Select “.qxd” document within the QuarkXPress folder.
6. In the “Append” dialog box, select “Colors.”
7. Select the colors or “Include All” and click “OK”.



8. This will populate the color palette with your PANTONE-calibrated color library – Click “Save”.

9.



For QuarkXPress version 7.x and 8.x you can also copy both the “.cui” and “.qcl” files to the color folder within your QuarkXPress 7/8 directory for your printers’ PANTONE Color library to appear in the color window. The default directory is “C:\Program Files\Quark\Color” and “Applications/QuarkXPress {version #}/Color”.

Technical Support

Pantone is committed to offering you immediate and professional technical support. Technical support is provided at no-charge to registered users of our products. Please be sure to provide a concise description of your problem including your system specifics.

You can reach Pantone Technical Support several ways:

- 1) Telephone: 201.935.5500, or 1-888-726-8663 (North America toll free) Monday through Friday, 9:00 a.m. to 5:00 p.m., Eastern Time
- 2) Fax: 201.935.3338. Please include your telephone, fax number and E-mail address as we may use any of these methods to contact you
- 3) Online: <http://www.pantone.com/helpcenter>
- 4) Email support: support@pantone.com

How to Contact Us

To reach our Customer Relations Department, please call 888-726-8663 (888-PANTONE). For more information on other PANTONE Products, please visit our Web site at www.pantone.com.

Pantone LLC
590 Commerce Boulevard
Carlstadt, NJ 07072-3098 U.S.A.
Telephone: 201.935.5500 or 1-888-726-8663 (North America toll free)
Fax: 201.896.0242