

Xerox[®] WorkCentre[®] 6655 / 6655i

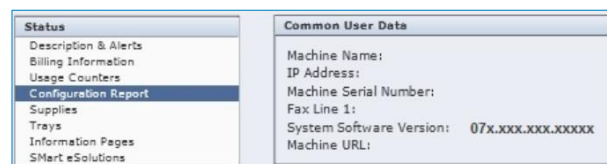
Software Installation Instructions

Upgrading Software for Xerox[®] ConnectKey[®] Technology

A new firmware update containing the latest improvements is available for your ConnectKey-enabled multifunctional printer. The upgrade process can be performed on Xerox[®] devices built on ConnectKey Technology currently running software versions starting with 072 or 073.

Identify the Device Software Version

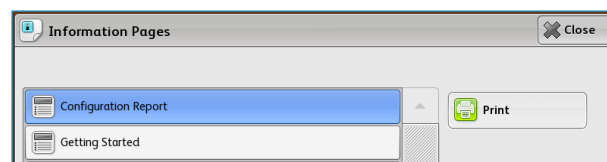
1. At the computer, open an Internet browser window.
2. Enter the IP Address of the device in the **Address** field in the format **http://xx.xxx.xxx.xx** and then press **Enter** on the keyboard. The CentreWare Internet Services home page is displayed.
3. Select the **Status** tab, and then select **Configuration Report**.
4. Scroll to the **Common User Data** section and record the **System Software Version** shown.



Print a Configuration Report

It is important to print and keep a Configuration Report for reference until after the software update has been completed.

1. At the device, press the **Machine Status** button.
2. Touch the **Information Pages** button.
3. Touch **Configuration Report** and then touch **Print**.



Upgrade Procedures

Automatic Upgrade (Recommended)	To upgrade your device we recommend you use the Xerox [®] ConnectKey [®] Technology Software Upgrade Utility. This utility enables you to upgrade your device automatically by running through our quick and easy-to-use tool interface. To use the recommended automatic upgrade process, follow the instructions provided on page 2.	
Manual Upgrade	If you experience problems with the automatic upgrade procedure, a manual upgrade process can be used. The instructions vary depending on your current software level, identify the correct procedure to follow for your device using the table below:	
	Software Version	Procedure
	072.xxx.xxx.xxxxx	Complete Part 1 instructions (see page 5)
	073.xxx.xxx.xxxxx	Complete Part 2 instructions (see page 7)

Note: The software version you are installing must always be higher than the software version currently installed on your device for a successful upgrade to occur.

Xerox® ConnectKey® Technology Software Upgrade Utility

Automatic Upgrade to a later version of Software for Xerox® ConnectKey® Technology

This utility automatically updates devices running software versions 072.xxx.xxx.xxxxx or 073.xxx.xxx.xxxxx to a later version of software for Xerox® ConnectKey® Technology, including all required patches.

There is a specific version of the utility for each family of devices. The utility automatically validates that it is connected to the correct type of device and that the user has valid administrative credentials before the upgrade process begins. The total upgrade process can take from 1 to 2.5 hours depending on the current software version of the device. It is a multi-step process and the device will be inoperable during this time. Ensure the device is free from faults and paper jams before starting the upgrade process.

Requirements

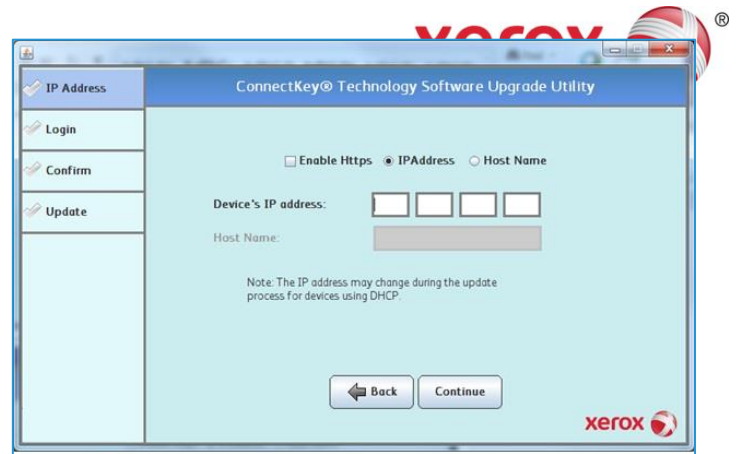
- Check the software version installed on your device (see instructions on page 1). If the software version number does not start with 072 or 073, verify the type of device you have and check for the correct upgrade instructions on www.xerox.com/support.
- A computer with Java 6 or later installed and with network access to the WorkCentre® device.
- This utility must be downloaded and saved on your computer hard drive and opened from there. Do not run the utility from a USB drive or remote server.
- The WorkCentre® must have the HTTP option enabled. Refer to the System Administrator Guide for instructions.

Procedure

1. At the device, print a copy of the Configuration Report (see page 1 for instructions) and make sure A4 or Letter paper is loaded in at least one tray.
2. At the computer, access www.xerox.com/support and locate and download the **WorkCentre_6655_Automatic_Upgrade.zip** file. Unzip the file to your desktop, a folder called **WorkCentre_6655_Automatic_Upgrade** is created.
3. Open the folder and double-click the Jar file (PC/Mac) or type `java -jar <jar file name>` (Linux).
4. The initial entry screen is displayed. Click **Continue**.

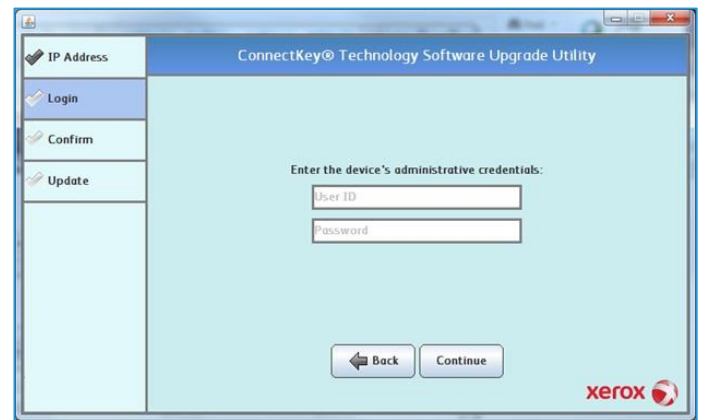


5. Enter the IP address or hostname of the device.
6. If **Force Traffic over Secure Connection** (or **Force Traffic over SSL**) is enabled on the device, click the **Enable HTTPS** box before continuing.
7. **Note:** To verify if the setting is enabled, access CentreWare Internet Services and select the **Properties** tab, then select **Connectivity**, then **Setup**. Locate the **HTTP** protocol and select **Edit**. The **Force Traffic over Secure Connection** (or **Force Traffic over SSL**) setting is shown.

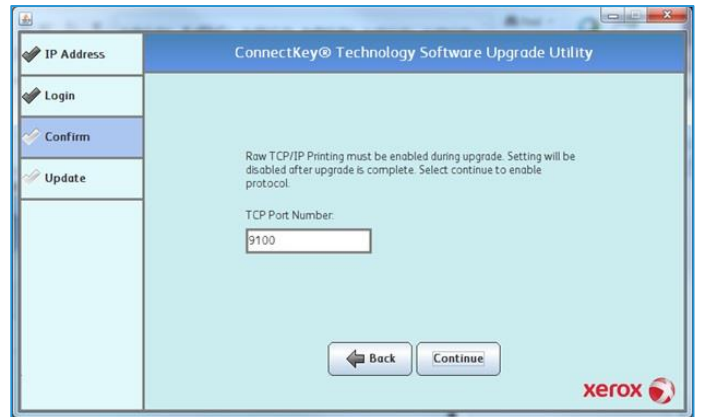


8. If the correct WorkCentre® device is not found at the location an error message is displayed. Click **OK** then check the address is correct and try again.

9. Click **Continue**.
10. Enter administrative credentials for the device. If open access is enabled you are not prompted for a User ID and Password.
11. Click **Continue**.



12. If **Raw TCP/IP Printing** is disabled on the device, you are prompted to temporarily enable the protocol.
13. Click **Continue**.



14. You are prompted to confirm installation of the embedded apps. Deselect the checkbox if you do not want the apps installed.

15. Click **Continue**.

If the correct WorkCentre® device is not found at the location an error message is displayed. Click **OK** then download the correct version of the utility for the device and try again.

16. The current software version and the updates to be installed are displayed. Check the software version being installed is higher than the current software version and then click **Continue** to confirm installation.

If the software version being installed is lower than the current software version, click the **X** button to exit the utility.

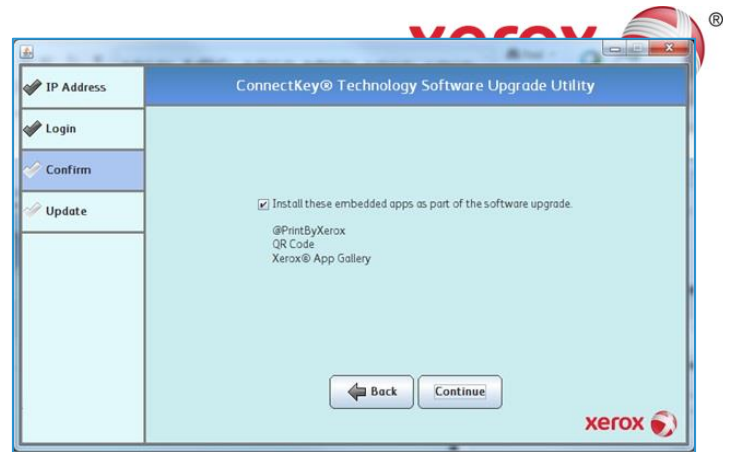
17. The utility starts the update process and installs all required software releases and patches automatically. A message is displayed to confirm a successful update. Click **Close**.

If the progress bar stops during the upgrade process, check the IP address of the device is still valid. If the IP address has changed or if an error has occurred, click the **X** button to exit the utility and then start the upgrade process again.

If the problem persists, refer to page 1 and follow the Manual Upgrade process instructions.

When the software upgrade is complete, the device automatically reboots and prints a Software Upgrade Report and a new Configuration Report.

Congratulations! You have successfully upgraded your software for Xerox® ConnectKey® Technology.



Part 1



Upgrade from Software Version 072.xxx.xxx.xxxxx to 073.xxx.xxx.xxxxx

1. At the device, print a copy of the Configuration Report (see page 1 for instructions) and make sure A4 or Letter paper is loaded in at least one tray.
2. At the computer, install Pre-upgrade Patch 788101v5.1.dlm on your device:
 - a. Access www.xerox.com/support and locate and download the **WorkCentre_6655_Manual_Upgrade.zip** file. Unzip the file to your desktop, a folder called **WorkCentre_6655_Manual_Upgrade** is created.
 - b. Open an Internet browser window. Enter the IP Address of the device in the **Address** field in the format **http://xx.xxx.xxx.xx** and then press **Enter** on the keyboard.
 - c. Select the **Properties** tab. A Login screen may be displayed. Enter the System Administrator's User ID and Password and select **Login**. The default User ID is **admin**, and the default password is **1111**.
 - d. Select **General Setup** and then select **Software Upgrade**.
 - If **Security Installation Policy: Not Allowed (Device and Remote Methods)** is shown, the Software Upgrades option is disabled. Select the **Allow Upgrade** button. The pop-up message **Properties have been successfully modified** is displayed, select **OK**.
 - Select the **Security Installation Policy:** link and enable all the options. This ensures all the software upgrade functions are accessible. Select **Apply**. The pop-up message **Properties have been successfully modified** is displayed, select **OK**.
 - Select **Software Upgrade** from the menu to return to the Software Upgrade page.
 - e. Select **Manual Upgrade**.
 - f. Select **Browse** and locate the **WorkCentre_6655_Manual_Upgrade** folder, then select **Open**.
 - g. Select the **788101v5.1.dlm** file then select **Open**.
 - h. Select the **Install Software** button. The pop-up message **File has been submitted** is displayed. Select **OK**.
If you get a printed sheet with the message **This patch is not intended for this software version and was not installed**, ensure the device has software version 072.xxx.xxx.xxxxx installed.

The patch is successfully installed when the Network Controller version shows 788101v5.1 appended.

3. At the computer, install Software Version 073.xxx.xxx.xxxxx on your device:
 - a. Before installing the next file select **Logout** in the upper right area of the page, and then select the **Logout** button.
 - b. Select the **Properties** tab. A Login screen may be displayed. Enter the System Administrator's User ID and Password and select **Login**. The default User ID is **admin**, and the default password is **1111**.
 - c. Select **General Setup** and then select **Software Upgrade**.
 - If **Security Installation Policy: Not Allowed (Device and Remote Methods)** is shown, the Software Upgrades option is disabled. Select the **Allow Upgrade** button. The pop-up message **Properties have been successfully modified** is displayed, select **OK**.
 - Select the **Security Installation Policy:** link and enable all the options. This ensures all the software upgrade functions are accessible. Select **Apply**. The pop-up message **Properties have been successfully modified** is displayed, select **OK**.
 - Select **Software Upgrade** from the menu to return to the Software Upgrade page.
 - d. Select **Manual Upgrade**.
 - e. Select **Browse** and locate the **WorkCentre_6655_Manual_Upgrade** folder, then select **Open**.
 - f. Select the **WorkCentre_6655-system-sw#073xxxxxxxxxxxx#.DLM** file, and then select **Open**.
 - g. Select the **Install Software** button. The pop-up message **File has been submitted** is displayed. Select **OK**.

Do not navigate from the Internet browser during the file transferring process.





Software Installation will begin several minutes after the software file has been submitted to the device. Once Installation has begun all CentreWare Internet Services from the device will be lost, including the Web User Interface. The installation progress can be monitored from the device user interface. The software install process may take up to 60 minutes.

When the software upgrade is complete, the device automatically reboots and prints a Software Upgrade Report and a new Configuration Report.

Congratulations! You have successfully upgraded your software for Xerox® ConnectKey® Technology.



Part 2



Upgrade from 073.xxx.xxx.xxxxx to a later version of Software for Xerox® ConnectKey® Technology

1. At the device, print a copy of the Configuration Report (see page 1 for instructions) and make sure A4 or Letter paper is loaded in at least one tray.
2. At the computer, perform the Software Installation for your device:
 - a. Access www.xerox.com/support and locate and download the **WorkCentre_6655_Manual_Upgrade.zip** file. Unzip the file to your desktop, a folder called **WorkCentre_6655_Manual_Upgrade** is created.
 - b. Check the software version is later than the software version currently installed on your device:
 - Open the **WorkCentre_6655_Manual_Upgrade** folder.
 - Compare the last 6 digits of the software DLM file with the software version shown on the Configuration Report printed on your device.
The software DLM file number must be **higher** than the software version installed on your device for a successful upgrade to occur.
 - c. Open an Internet browser window. Enter the IP Address of the device in the **Address** field in the format **http://xx.xxx.xxx.xx** and then press **Enter** on the keyboard.
 - d. Select the **Properties** tab. A Login screen may be displayed. Enter the System Administrator's User ID and Password and select **Login**. The default User ID is **admin**, and the default password is **1111**.
 - e. Select **General Setup** and then select **Software Upgrade**.
 - If **Security Installation Policy: Not Allowed (Device and Remote Methods)** is shown, the Software Upgrades option is disabled. Select the **Allow Upgrade** button. The pop-up message **Properties have been successfully modified** is displayed, select **OK**.
 - Select the **Security Installation Policy:** link and enable all the options. This ensures all the software upgrade functions are accessible. Select **Apply**. The pop-up message **Properties have been successfully modified** is displayed, select **OK**.
 - Select **Software Upgrade** from the menu to return to the Software Upgrade page.
 - f. Select **Manual Upgrade**.
 - g. Select **Browse** and locate the **WorkCentre_6655_Manual_Upgrade** folder, then select **Open**.
 - h. Select the **WorkCentre_6655-systemsw#073xxxxxxxxxx#.DLM** file, and then select **Open**.
 - i. Select the **Install Software** button. The pop-up message **File has been submitted** is displayed. Select **OK**.

Do not navigate from the Internet browser during the file transferring process.

Software Installation will begin several minutes after the software file has been submitted to the device. Once Installation has begun all CentreWare Internet Services from the device will be lost, including the Web User Interface. The installation progress can be monitored from the device user interface. The software install process may take up to 60 minutes.

When the software upgrade is complete, the device automatically reboots and prints a Software Upgrade Report and a new Configuration Report.

Congratulations! You have successfully upgraded your software for Xerox® ConnectKey® Technology.

